

# 11 FLOOR PLANS OF RESIDENTIAL PROPERTIES IN THE DEVELOPMENT

## 發展項目的住宅物業的樓面平面圖

Legends of terms and abbreviations used on floor plans 平面圖中所使用名詞及簡稱之圖例					
A/C PLANT ROOM :	Air-conditioning Plant Room 冷氣機房	ALUMINUM ARCHITECTURAL FEATURE :	Aluminum Architectural Feature 鋁質建築外牆裝飾	BALCONY :	Balcony 露台
BATH-1 :	Bathroom-1 浴室 -1	BATH-2 :	Bathroom-2 浴室 -2	BATH-3 :	Bathroom-3 浴室 -3
BATH-4 :	Bathroom-4 浴室 -4	BATH-M1 :	Bathroom-M1 浴室 -M1	BATH-M2 :	Bathroom-M2 浴室 -M2
BEDROOM-1 :	Bedroom-1 睡房 -1	BEDROOM-2 :	Bedroom-2 睡房 -2	BEDROOM-3 :	Bedroom-3 睡房 -3
BEDROOM-4 :	Bedroom-4 睡房 -4	CARPARK :	Car Park 停車間	CENTRAL WATER HEATER ROOM :	Central Water Heater Room 中央熱水機房
CORRIDOR :	Corridor 走廊	DINING ROOM :	Dining Room 飯廳	DN :	Down 向下
DRIVEWAY :	Driveway 車道	ENTRANCE COURT YARD :	Entrance Court Yard 入口庭園	F.H.:	Fire Hydrant 消防栓
STREET FIRE HYDRANT (SALT WATER) :	Street Fire Hydrant (Salt Water) 街道消防栓 (鹹水)	FOYER :	Foyer 門廊	FILTRATION PLANT ROOM :	Filtration Plant Room 過濾系統機房
FLAT ROOF :	Flat Roof 平台	FLAT ROOF BELOW :	Flat Roof Below 平台在下面	F.S. WATER TANK :	Fire Service Water Tank 消防水箱
F.S. PUMP ROOM :	Fire Service Pump Room 消防泵房	GLASS SKYLIGHT BELOW :	Glass Skylight Below 玻璃天窗在下面	GARDEN :	Garden 花園
H.R.:	Hose Reel 消防喉轆	KITCHEN :	Kitchen 廚房	LAWN :	Lawn 草坪
LIFT :	Lift 升降機	LIVING ROOM :	Living Room 客廳	LOBBY :	Lobby 大堂

# 11 FLOOR PLANS OF RESIDENTIAL PROPERTIES IN THE DEVELOPMENT

## 發展項目的住宅物業的樓面平面圖

MAIN SWITCH RM :	Main Switch Room 主電掣房	MASTER BEDROOM-1 :	Master Bedroom-1 主人睡房 -1	MASTER BEDROOM-2 :	Master Bedroom-2 主人睡房 -2
P.D. :	Pipe Duct 管道槽	PLANTER :	Planter 花槽	PUMP ROOM :	Pump Room 泵房
PUMP ROOM (FLUSHING & POTABLE WATER TANK):	Pump Room (Flushing and Potable Water Tank) 泵房 (沖廁水及食水缸)	REAR GARDEN :	Rear Garden 後花園	RIGHT OF WAY :	Right of way 通行權通道
S.D. :	Sliding Door 滑門	SHOWER :	Shower Area 淋浴間	ST :	Staircase 樓梯
STORE ROOM :	Store Room 雜物房	STREET FIRE HYDRANT WATER TANK:	Street Fire Hydrant Water Tank 街道消防栓水箱	SWIMMING POOL :	Swimming Pool 游泳池
TEMPERED GLASS SKYLIGHT :	Tempered Glass Skylight 強化玻璃天窗	ROOF :	Roof 天台	UP :	Up 上
VOID :	Void 空間				

Notes 備註:

- The dimensions of the floor plans are all structural dimensions in millimeter.  
平面圖所列之尺寸數字為以毫米標示之建築結構尺寸。
- There may be architectural features and/or exposed pipes/ductings on external walls of the house.  
洋房外牆設有建築裝飾及 / 或外露喉管 / 管道。
- Floor-to-floor height refers to the height between the top surface of the structural slab of a floor and the top surface of the structural slab of its immediate upper floor.  
層與層之間的高度指該樓層之石屎地台面與上一層石屎地台面之高度距離。
- The internal areas of the residential properties on the upper floors will generally be slightly larger than those on the lower floors because of the reducing thickness of the structural walls on the upper floors.  
因住宅物業的較高樓層的結構牆的厚度遞減，較高樓層的內部面積，一般比較低樓層的內部面積稍大。
- Symbols of fittings and fitments shown on the floor plans, such as sinks, bathtubs, toilet bowls and wash basins, etc., are architectural symbols retrieved from the latest approved general building plans and for general indication only but not for indications of their actual size, design or shapes.  
平面圖上所顯示的形象裝置符號，例如洗滌盤、浴缸、坐廁及洗面盆等乃擇自最新的經批准的建築圖則，只作一般性標誌而非展示其實際大小、設計或形狀。
- Balcony is a non-enclosed area.  
露台為不可封閉的地方。
- The remarks and legends on this page apply to all pages of "Floor Plans of Residential Properties in the Development".  
在本頁上之備註和圖例適用於全部的「發展項目的住宅物業的樓面平面圖」頁數。

# 11 FLOOR PLANS OF RESIDENTIAL PROPERTIES IN THE DEVELOPMENT

## 發展項目的住宅物業的樓面平面圖

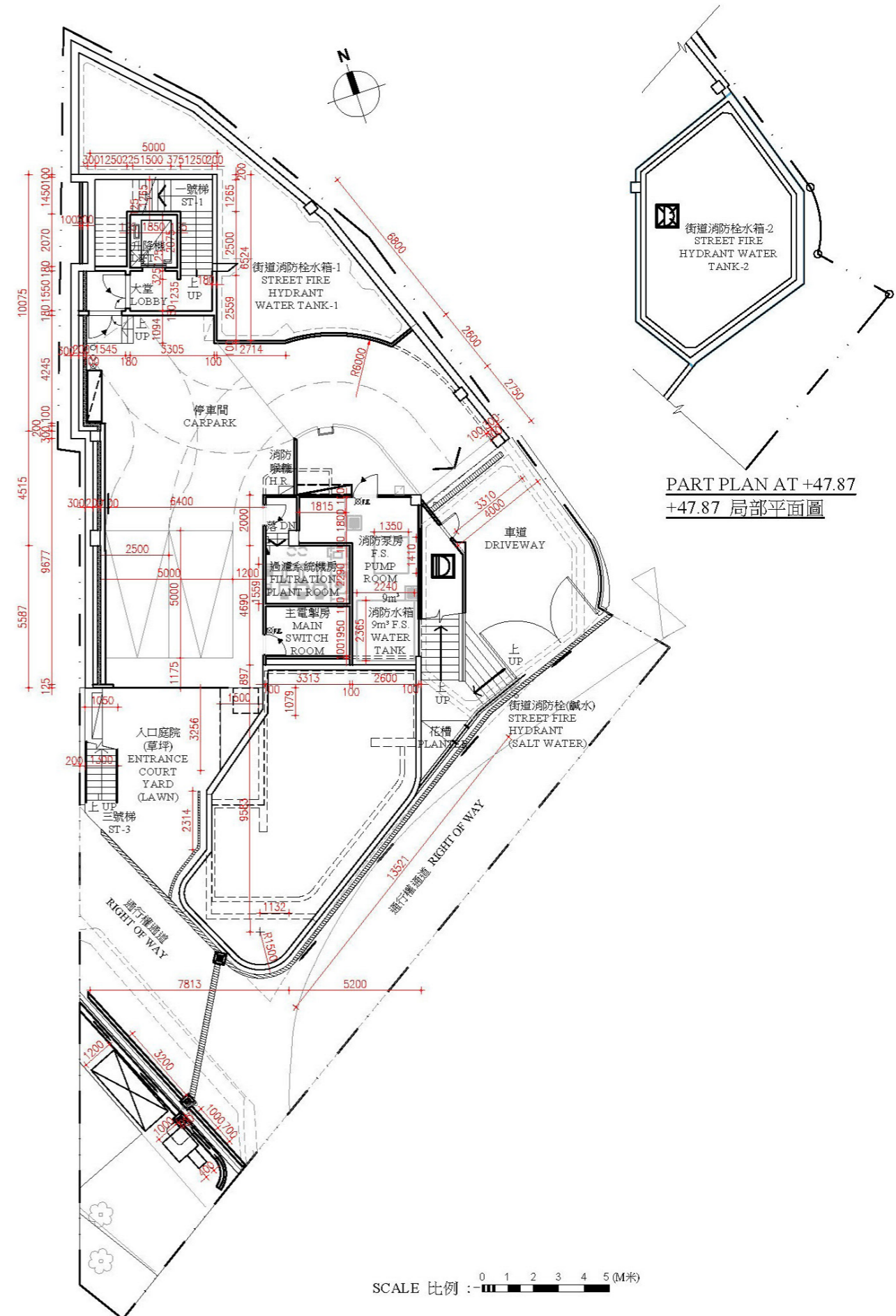
As Per Approved General Building Plan  
根據批准建築圖則

### BASEMENT FLOOR PLAN 地庫平面圖

	The thickness of the floor slabs (excluding plaster) of each residential property (mm) 每個住宅物業的樓板 (不包括灰泥) 的厚度 (毫米)	The floor-to-floor height of each residential property (mm) 每個住宅物業的層與層之間的高度 (毫米)
Basement Floor 地庫	150	3950

Notes 備註:

- The dimensions in floor plans are all structural dimensions in millimeter.  
平面圖所列的數字為以毫米標示之建築結構尺寸。
- Please refer to pages 20 and 21 of this sales brochure for the legends of the terms and abbreviations for the floor plans of residential properties.  
請參閱本售樓說明書第 20 及 21 頁為住宅物業樓面平面圖而設之名稱及簡稱的圖例。
- Floor-to-floor height refers to the height between the top surface of the structural slab of a floor and the top surface of the structural slab of its immediate upper floors.  
層與層之間的高度指該樓層之石屎地台面與上一層石屎地台面之高度距離。
- The internal areas of the residential properties on the upper floors will generally be slightly larger than those on the lower floors because of the reducing thickness of the structural walls on the upper floors. (Not applicable to the Development)  
因住宅物業的較高樓層的結構牆的厚度遞減，較高樓層的內部面積，一般比較低樓層的內部面積稍大。(不適用於本發展項目)



# 11 FLOOR PLANS OF RESIDENTIAL PROPERTIES IN THE DEVELOPMENT

## 發展項目的住宅物業的樓面平面圖

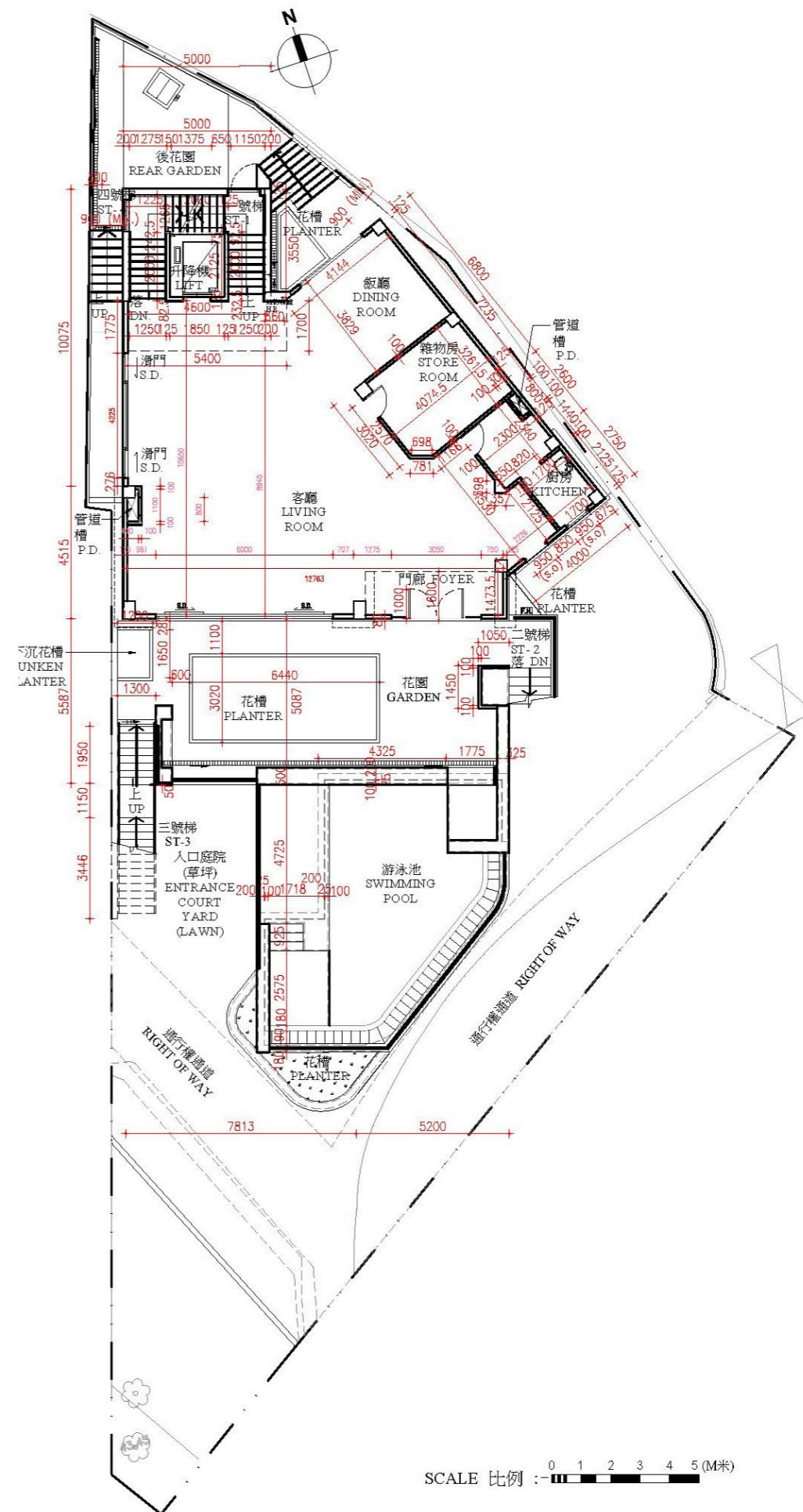
As Per Approved General Building Plan  
根據批准建築圖則

### GROUND FLOOR PLAN 地下平面圖

	The thickness of the floor slabs (excluding plaster) of each residential property (mm) 每個住宅物業的樓板 (不包括灰泥) 的厚度 (毫米)	The floor-to-floor height of each residential property (mm) 每個住宅物業的層與層之間的高度 (毫米)
Ground Floor 地下	175	4375

Notes 備註:

- The dimensions in floor plans are all structural dimensions in millimeter.  
平面圖所列的數字為以毫米標示之建築結構尺寸。
- Please refer to pages 20 and 21 of this sales brochure for the legends of the terms and abbreviations for the floor plans of residential properties  
請參閱本售樓說明書第 20 及 21 頁為住宅物業樓面平面圖而設之名稱及簡稱的圖例。
- Floor-to-floor height refers to the height between the top surface of the structural slab of a floor and the top surface of the structural slab of its immediate upper floors.  
層與層之間的高度指該樓層之石屎地台面與上一層石屎地台面之高度距離。
- The internal areas of the residential properties on the upper floors will generally be slightly larger than those on the lower floors because of the reducing thickness of the structural walls on the upper floors. (Not applicable to the Development)  
因住宅物業的較高樓層的結構牆的厚度遞減，較高樓層的內部面積，一般比較低樓層的內部面積稍大。(不適用於本發展項目)



# 11 FLOOR PLANS OF RESIDENTIAL PROPERTIES IN THE DEVELOPMENT

## 發展項目的住宅物業的樓面平面圖

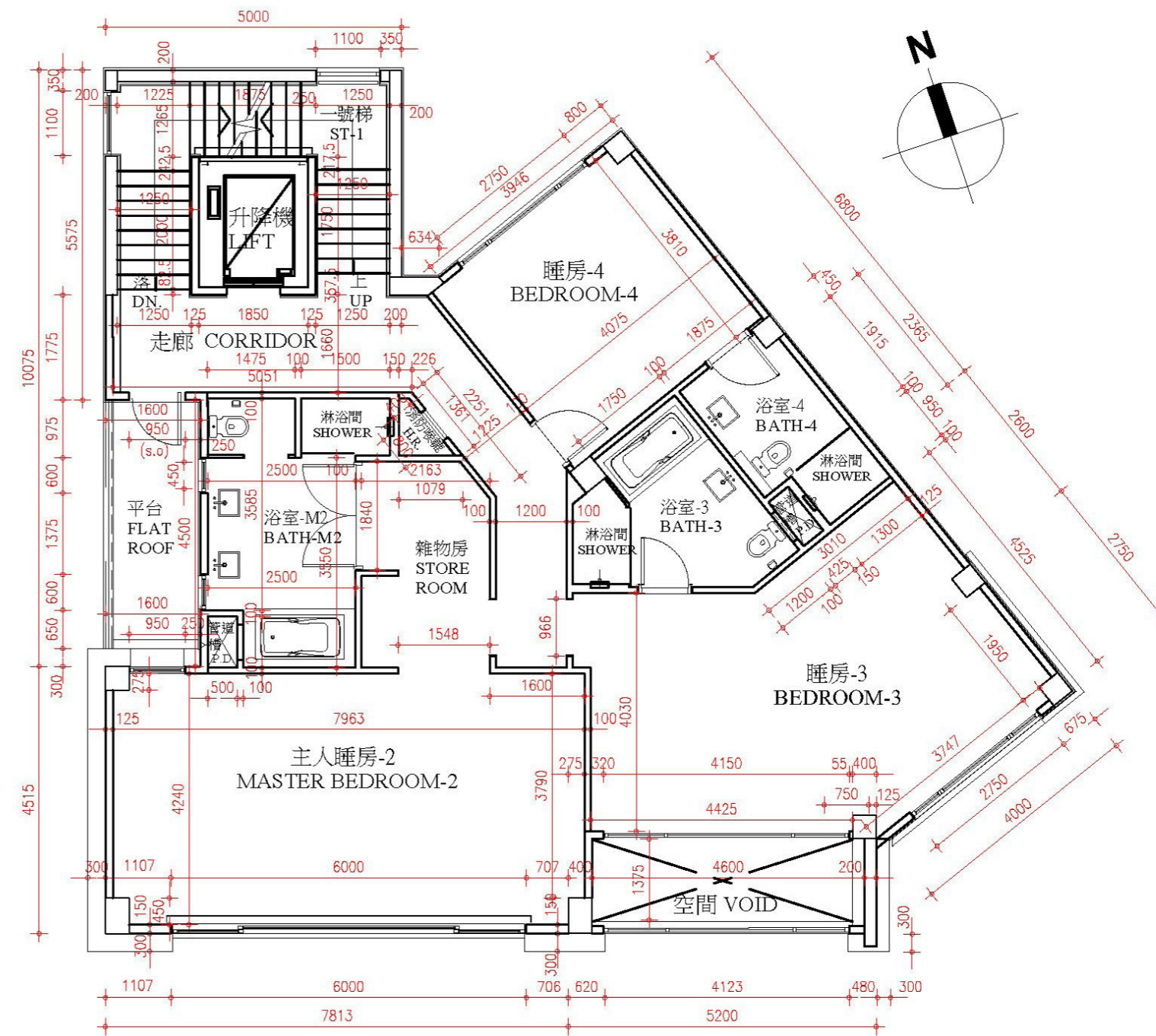
As Per Approved General Building Plan  
根據批准建築圖則

### FIRST FLOOR PLAN 一樓平面圖

	The thickness of the floor slabs (excluding plaster) of each residential property (mm) 每個住宅物業的樓板 (不包括灰泥) 的厚度 (毫米)	The floor-to-floor height of each residential property (mm) 每個住宅物業的層與層之間的高度 (毫米)
First Floor 一樓	150	3800

Notes 備註:

- The dimensions in floor plans are all structural dimensions in millimeter.  
平面圖所列的數字為以毫米標示之建築結構尺寸。
- Please refer to pages 20 and 21 of this sales brochure for the legends of the terms and abbreviations for the floor plans of residential properties.  
請參閱本售樓說明書第 20 及 21 頁為住宅物業樓面平面圖而設之名詞及簡稱的圖例。
- Floor-to-floor height refers to the height between the top surface of the structural slab of a floor and the top surface of the structural slab of its immediate upper floors.  
層與層之間的高度指該樓層之石屎地台面與上一層石屎地台面之高度距離。
- The internal areas of the residential properties on the upper floors will generally be slightly larger than those on the lower floors because of the reducing thickness of the structural walls on the upper floors. (Not applicable to the Development)  
因住宅物業的較高樓層的結構牆的厚度遞減，較高樓層的內部面積，一般比較低樓層的內部面積稍大。(不適用於本發展項目)



SCALE 比例 : 0 1 2 3 4 5 (M米)

# 11 FLOOR PLANS OF RESIDENTIAL PROPERTIES IN THE DEVELOPMENT

## 發展項目的住宅物業的樓面平面圖

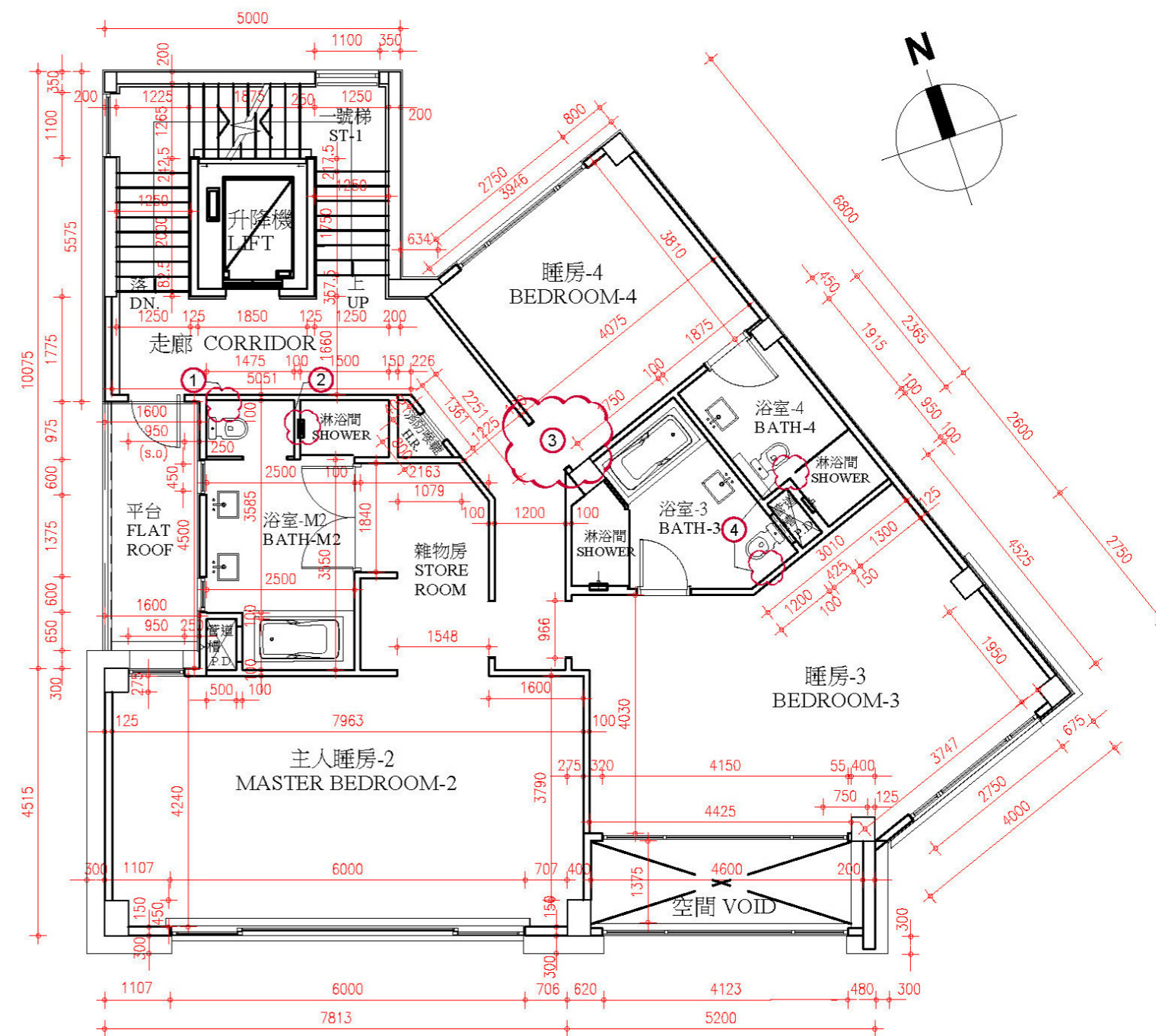
Latest Layout Plan  
現狀間隔平面圖

FIRST FLOOR PLAN  
一樓平面圖

	The thickness of the floor slabs (excluding plaster) of each residential property (mm) 每個住宅物業的樓板 (不包括灰泥) 的厚度 (毫米)	The floor-to-floor height of each residential property (mm) 每個住宅物業的層與層之間的高度 (毫米)
First Floor 一樓	150	3800

Notes 備註:

- This part of the House has been altered by way of minor works, designated exempted works, or exempted works under the Buildings Ordinance after completion of the development, the latest condition of which is shown on the relevant latest layout plan. The alteration works are as follows:  
洋房此部份因在發展項目落成後進行小型工程、指定豁免工程或獲《建築物條例》豁免的工程而有所改動，現狀請參閱有關現狀間隔平面圖。該等改動如下：
  - Original toilet paper holder has been removed.  
原有廁紙架移除。
  - Original shower head has been relocated from right hand side to left hand side.  
原有花灑頭由右邊轉去左邊。
  - Original swing door has been removed.  
原有掩門移除。
  - Original toilet paper holder has been removed.  
原有廁紙架移除。
- The dimensions in floor plans are all structural dimensions in millimeter.  
平面圖所列的數字為以毫米標示之建築結構尺寸。
- Please refer to pages 20 and 21 of this sales brochure for the legends of the terms and abbreviations for the floor plans of residential properties.  
請參閱本售樓說明書第 20 及 21 頁為住宅物業樓面平面圖而設之名稱及簡稱的圖例。
- Floor-to-floor height refers to the height between the top surface of the structural slab of a floor and the top surface of the structural slab of its immediate upper floors.  
層與層之間的高度指該樓層之石屎地台面與上一層石屎地台面之高度距離。
- The internal areas of the residential properties on the upper floors will generally be slightly larger than those on the lower floors because of the reducing thickness of the structural walls on the upper floors. (Not applicable to the Development)  
因住宅物業的較高樓層的結構牆的厚度遞減，較高樓層的內部面積，一般比較低樓層的內部面積稍大。(不適用於本發展項目)



SCALE 比例 : 0 1 2 3 4 5 (M米)

# 11 FLOOR PLANS OF RESIDENTIAL PROPERTIES IN THE DEVELOPMENT

## 發展項目的住宅物業的樓面平面圖

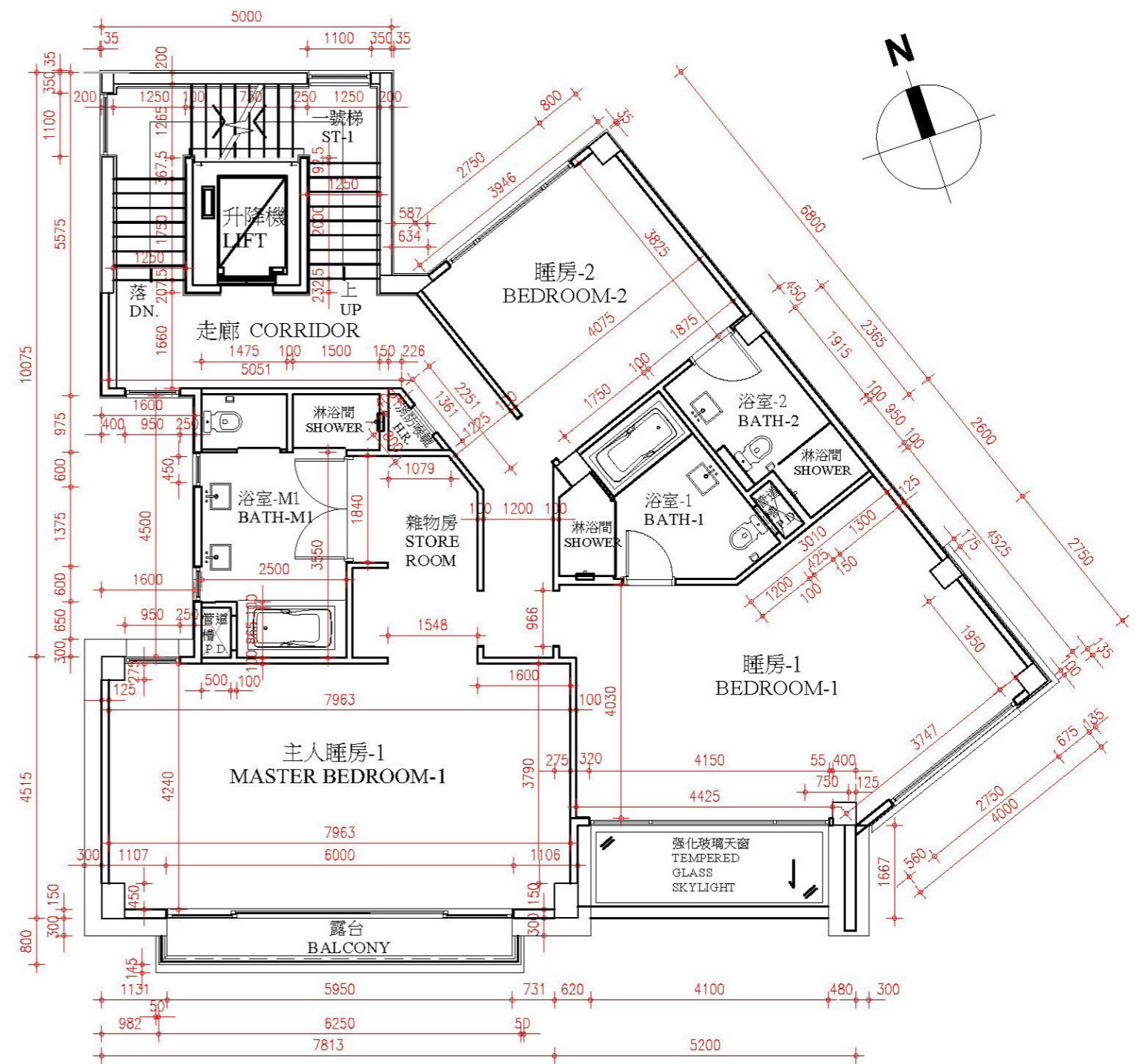
As Per Approved General Building Plan  
根據批准建築圖則

### SECOND FLOOR PLAN 二樓平面圖

	The thickness of the floor slabs (excluding plaster) of each residential property (mm) 每個住宅物業的樓板 (不包括灰泥) 的厚度 (毫米)	The floor-to-floor height of each residential property (mm) 每個住宅物業的層與層之間的高度 (毫米)
Second Floor 二樓	150	3800

Notes 備註:

- The dimensions in floor plans are all structural dimensions in millimeter.  
平面圖所列的數字為以毫米標示之建築結構尺寸。
- Please refer to pages 20 and 21 of this sales brochure for the legends of the terms and abbreviations for the floor plans of residential properties.  
請參閱本售樓說明書第 20 及 21 頁為住宅物業樓面平面圖而設之名詞及簡稱的圖例。
- Floor-to-floor height refers to the height between the top surface of the structural slab of a floor and the top surface of the structural slab of its immediate upper floors.  
層與層之間的高度指該樓層之石屎地台面與上一層石屎地台面之高度距離。
- The internal areas of the residential properties on the upper floors will generally be slightly larger than those on the lower floors because of the reducing thickness of the structural walls on the upper floors. (Not applicable to the Development)  
因住宅物業的較高樓層的結構牆的厚度遞減，較高樓層的內部面積，一般比較低樓層的內部面積稍大。(不適用於本發展項目)



SCALE 比例 :- 0 1 2 3 4 5 (M米)

# 11 FLOOR PLANS OF RESIDENTIAL PROPERTIES IN THE DEVELOPMENT

## 發展項目的住宅物業的樓面平面圖

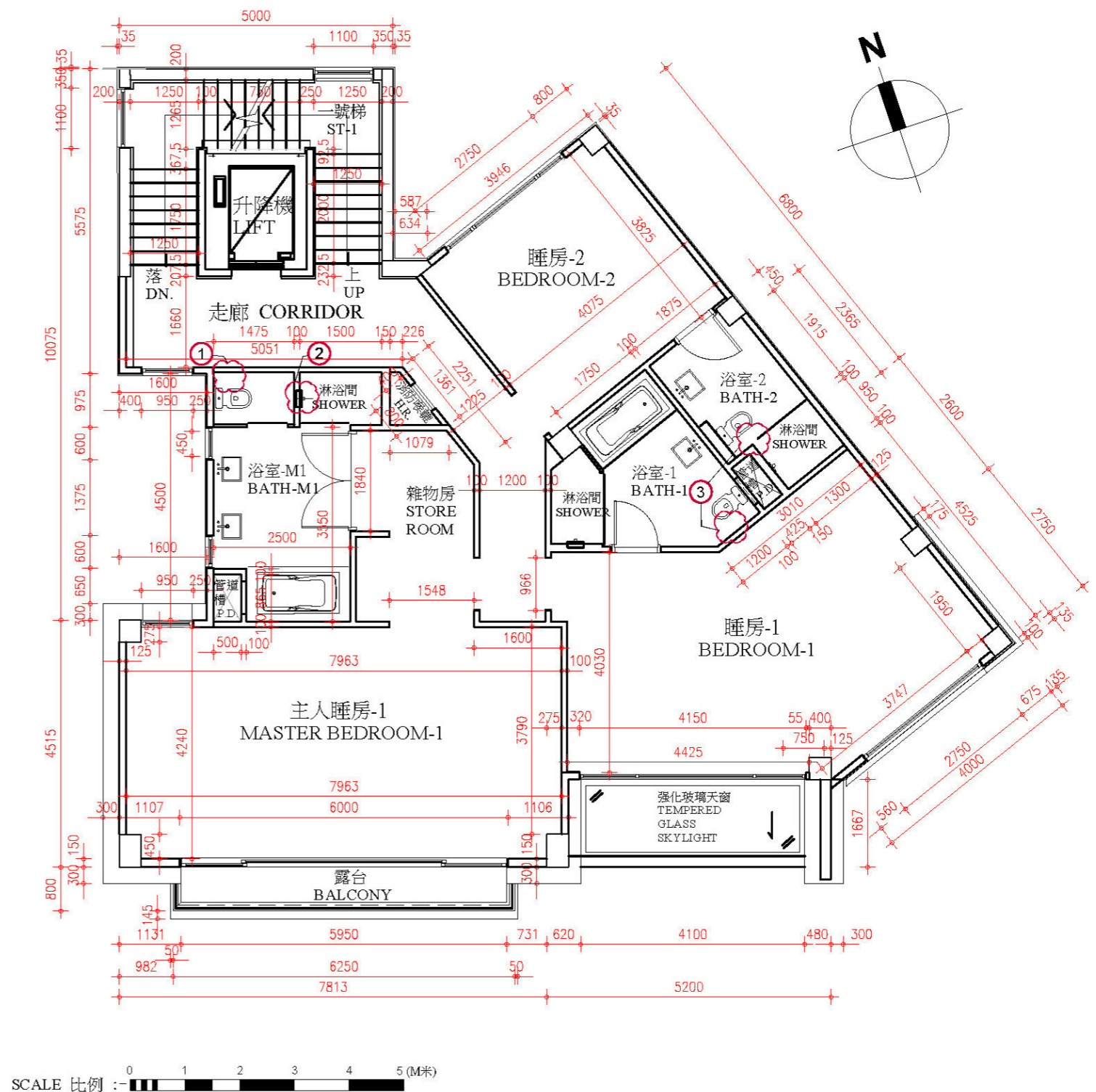
Latest Layout Plan  
現狀間隔平面圖

### SECOND FLOOR PLAN 二樓平面圖

	The thickness of the floor slabs (excluding plaster) of each residential property (mm) 每個住宅物業的樓板 (不包括灰泥) 的厚度 (毫米)	The floor-to-floor height of each residential property (mm) 每個住宅物業的層與層之間的高度 (毫米)
Second Floor 二樓	150	3800

Notes 備註:

- This part of the House has been altered by way of minor works, designated exempted works, or exempted works under the Buildings Ordinance after completion of the development, the latest condition of which is shown on the relevant latest layout plan. The alteration works are as follows:  
洋房此部份因在發展項目落成後進行小型工程、指定豁免工程或獲《建築物條例》豁免的工程而有所改動，現狀請參閱有關現狀間隔平面圖。該等改動如下：
  - Original toilet paper holder has been removed.  
原有廁紙架移除。
  - Original shower head has been relocated from right hand side to left hand side.  
原有花灑頭由右邊轉去左邊。
  - Original toilet paper holder has been removed.  
原有廁紙架移除。
- The dimensions in floor plans are all structural dimensions in millimeter.  
平面圖所列的數字為以毫米標示之建築結構尺寸。
- Please refer to pages 20 and 21 of this sales brochure for the legends of the terms and abbreviations for the floor plans of residential properties.  
請參閱本售樓說明書第 20 及 21 頁為住宅物業樓面平面圖而設之名稱及簡稱的圖例。
- Floor-to-floor height refers to the height between the top surface of the structural slab of a floor and the top surface of the structural slab of its immediate upper floors.  
層與層之間的高度指該樓層之石屎地台面與上一層石屎地台面之高度距離。
- The internal areas of the residential properties on the upper floors will generally be slightly larger than those on the lower floors because of the reducing thickness of the structural walls on the upper floors. (Not applicable to the Development)  
因住宅物業的較高樓層的結構牆的厚度遞減，較高樓層的內部面積，一般比較低樓層的內部面積稍大。(不適用於本發展項目)





# 11 FLOOR PLANS OF RESIDENTIAL PROPERTIES IN THE DEVELOPMENT

## 發展項目的住宅物業的樓面平面圖

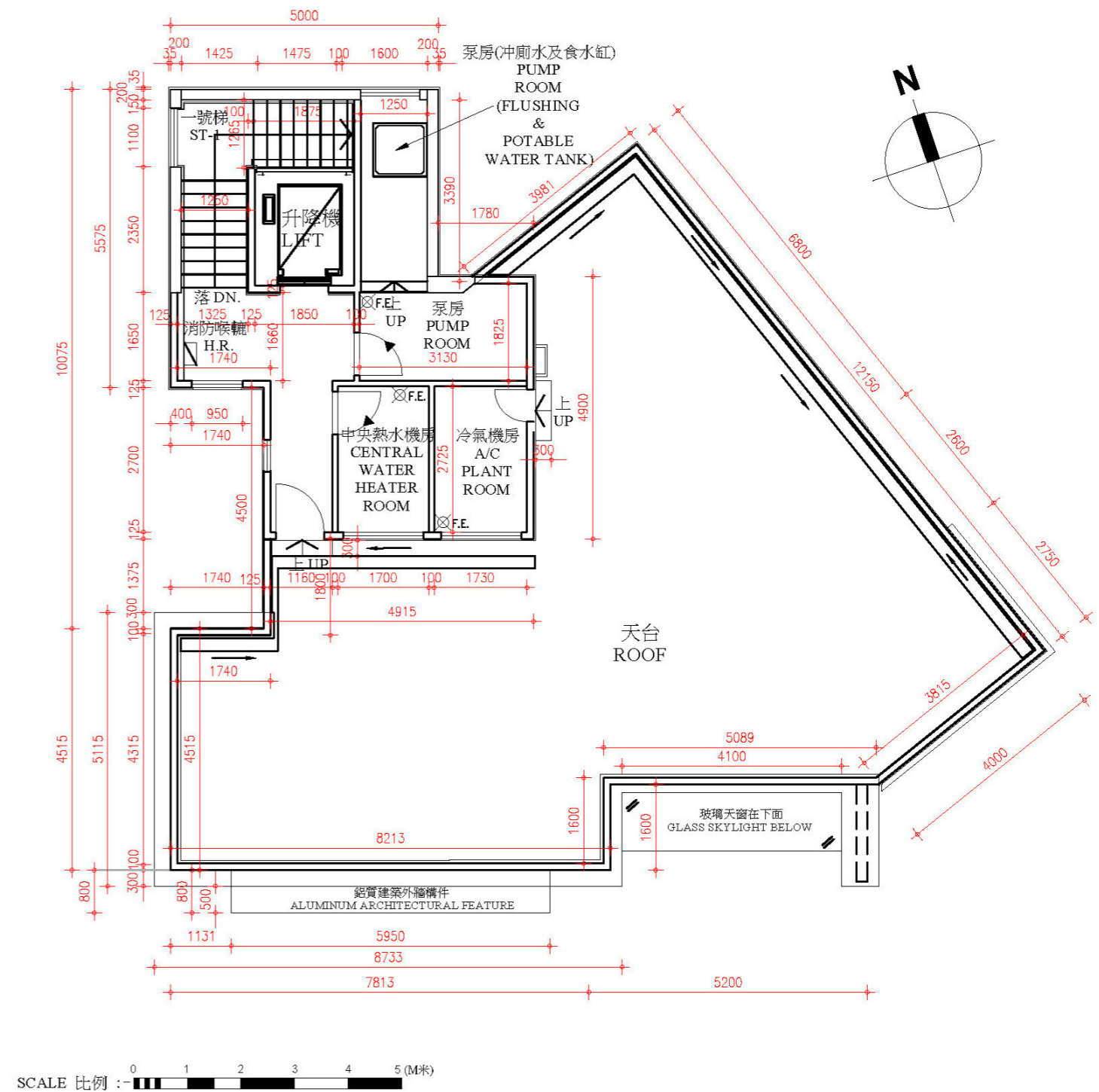
As Per Approved General Building Plan  
根據批准建築圖則

### ROOF FLOOR PLAN 天台平面圖

	The thickness of the floor slabs (excluding plaster) of each residential property (mm) 每個住宅物業的樓板 (不包括灰泥) 的厚度 (毫米)	The floor-to-floor height of each residential property (mm) 每個住宅物業的層與層之間的高度 (毫米)
Roof Floor 天台	125	Not Available 不適用

Notes 備註:

- The dimensions in floor plans are all structural dimensions in millimeter.  
平面圖所列的數字為以毫米標示之建築結構尺寸。
- Please refer to pages 20 and 21 of this sales brochure for the legends of the terms and abbreviations for the floor plans of residential properties.  
請參閱本售樓說明書第 20 及 21 頁為住宅物業樓面平面圖而設之名詞及簡稱的圖例。
- Floor-to-floor height refers to the height between the top surface of the structural slab of a floor and the top surface of the structural slab of its immediate upper floors.  
層與層之間的高度指該樓層之石屎地台面與上一層石屎地台面之高度距離。
- The internal areas of the residential properties on the upper floors will generally be slightly larger than those on the lower floors because of the reducing thickness of the structural walls on the upper floors. (Not applicable to the Development)  
因住宅物業的較高樓層的結構牆的厚度遞減，較高樓層的內部面積，一般比較低樓層的內部面積稍大。(不適用於本發展項目)



# 11 FLOOR PLANS OF RESIDENTIAL PROPERTIES IN THE DEVELOPMENT

## 發展項目的住宅物業的樓面平面圖

As Per Approved General Building Plan  
根據批准建築圖則

### UPPER ROOF PLAN 上層天台平面圖

	The thickness of the floor slabs (excluding plaster) of each residential property (mm) 每個住宅物業的樓板 (不包括灰泥) 的厚度 (毫米)	The floor-to-floor height of each residential property (mm) 每個住宅物業的層與層之間的高度 (毫米)
Upper Roof Floor 上層天台	Not Available 不適用	Not Available 不適用

Notes 備註:

- The dimensions in floor plans are all structural dimensions in millimeter.  
平面圖所列的數字為以毫米標示之建築結構尺寸。
- Please refer to pages 20 and 21 of this sales brochure for the legends of the terms and abbreviations for the floor plans of residential properties.  
請參閱本售樓說明書第 20 及 21 頁為住宅物業樓面平面圖而設之名詞及簡稱的圖例。
- Floor-to-floor height refers to the height between the top surface of the structural slab of a floor and the top surface of the structural slab of its immediate upper floors.  
層與層之間的高度指該樓層之石屎地台面與上一層石屎地台面之高度距離。
- The internal areas of the residential properties on the upper floors will generally be slightly larger than those on the lower floors because of the reducing thickness of the structural walls on the upper floors. (Not applicable to the Development)  
因住宅物業的較高樓層的結構牆的厚度遞減，較高樓層的內部面積，一般比較低樓層的內部面積稍大。(不適用於本發展項目)

