

FLOOR PLANS OF RESIDENTIAL PROPERTIES IN THE DEVELOPMENT

發展項目的住宅物業的樓面平面圖

Legend of Terms and Abbreviations on Floor Plans: 樓面平面圖中的名稱及簡稱:

ACP	= AIR-CONDITIONER PLATFORM 空調機平台	BLDG. LINE ABOVE (6/F)	= BUILDING LINE ABOVE (6/F) 上層之建築物外線(6樓)
ACP ABOVE	= AIR-CONDITIONER PLATFORM ABOVE 上層空調機平台	BLDG. LINE ABOVE (9/F)	= BUILDING LINE ABOVE (9/F) 上層之建築物外線(9樓)
A.F.	= ARCHITECTURAL FEATURE 建築裝飾	C.L.	= CAT LADDER 爬梯
A.F. ABOVE	= ARCHITECTURAL FEATURE ABOVE 上層建築裝飾	COMMON AREA	= 公用地方
A.F. BELOW	= ARCHITECTURAL FEATURE BELOW 下層建築裝飾	COMMON FLAT ROOF	= 公用平台
A.F. H/L OF 2/F ONLY	= ARCHITECTURAL FEATURE HIGH LEVEL OF 2/F ONLY 2樓高架建築裝飾	CORRIDOR (DESIGNATED AS COMMON AREA)	= 走廊(指定為公用地方)
ALUM. A.F.	= ALUMINIUM ARCHITECTURAL FEATURE 鋁建築裝飾	DN	= DOWN 落
ALUM. A.F. AT 17/F H/L ONLY	= ALUMINIUM ARCHITECTURAL FEATURE AT 17/F H/L ONLY 17樓高架鋁建築裝飾	E.A.D. / R.A.D.	= EXHAUST AIR DUCT/ RETURN AIR DUCT 排氣管/回風管
ALUM. A.F. BELOW	= ALUMINIUM ARCHITECTURAL FEATURE BELOW 下層鋁建築裝飾	E.M.R.	= ELECTRIC METER ROOM 電錶房
ALUM. A.F. (PERFORATED)	= ALUMINIUM ARCHITECTURAL FEATURE (PERFORATED) 鋁建築裝飾(疏孔)	FAN ROOM FOR R.S.M.R.R.	= FAN ROOM FOR REFUSE STORAGE AND MATERIAL RECOVERY ROOM 垃圾及物料回收室的風機房
ALUM. CLAD. / ALUM. CLADDING	= ALUMINIUM CLADDING 鋁裝飾板	F.LIFT LOBBY	= FIREMAN'S LIFT LOBBY 消防員升降機大堂
ALUM. GRILLE	= ALUMINIUM GRILLE 鋁格柵	FLAT ROOF	= 平台
BAL.	= BALCONY 露台	FRESH WATER PUMP ROOM	= 食水泵房
BAL. ABOVE	= BALCONY ABOVE 上層露台	FLUSHING & FRESH WATER PUMP ROOM	= 沖廁水及食水泵房
BATH	= BATHROOM 浴室	FILTRATION PIT BELOW	= 濾水設施置下
BATH 1	= BATHROOM 1 浴室 1	F.S. P.D. ROOM	= FIRE SERVICES PIPE DUCT ROOM 消防系統管道槽房
BATH 2	= BATHROOM 2 浴室 2	HR	= HOSE REEL 消防喉轆
BR.1	= BEDROOM 1 睡房 1	INACCESSIBLE FLAT ROOF	= 不可進入之平台
BR.2	= BEDROOM 2 睡房 2	INACCESSIBLE FLAT ROOF AT 6/F ONLY	= 只設於6樓之不可進入之平台
BR.3	= BEDROOM 3 睡房 3	JACUZZI	= 按摩池
		KIT.	= KITCHEN 廚房

FLOOR PLANS OF RESIDENTIAL PROPERTIES IN THE DEVELOPMENT

發展項目的住宅物業的樓面平面圖

LAV.	= LAVATORY 洗手間
LIFT	= 升降機
LIFT LOBBY	= 升降機大堂
LIFT OVERRUN	= 升降機槽頂部
LIV./ DIN.	= LIVING ROOM / DINING ROOM 客廳/飯廳
M.BATH	= MASTER BATHROOM 主人浴室
M.BR.	= MASTER BEDROOM 主人睡房
O.KIT.	= OPEN KITCHEN 開放式廚房
PERFORATED ALUM. A.F. AT SPANDREL AREA	= PERFORATED ALUMINIUM ARCHITECTURAL FEATURE AT SPANDREL AREA 於拱肩部分之疏孔鋁建築裝飾
P.D.	= PIPE DUCT 管道槽
PRIVATE FLAT ROOF	= 私人平台
PRIVATE ROOF	= 私人天台
R.S.M.R.R.	= REFUSE STORAGE AND MATERIAL RECOVERY ROOM 垃圾及物料回收室
SINK	= 洗滌盆
S	= STOVE 爐頭
STONE CLAD. / STONE CLADDING	= STONE CLADDING 石裝飾板
STORE	= 儲物室
SWIMMING POOL	= 游泳池
T.B.E. ROOM	= TELECOMMUNICATIONS BROADCASTING AND EQUIPMENT ROOM 電訊廣播及設備室
T.D.	= TELEPHONE DUCT 電話線槽
TOP OF BAL.	= TOP OF BALCONY 露台上蓋
TOP OF BAL. AT 6/F ONLY	= 只設於6樓之露台上蓋
TOP OF U.P.	= TOP OF UTILITY PLATFORM 工作平台上蓋
UP	= UP 上

U.P.	= UTILITY PLATFORM 工作平台
UTILITY	= UTILITY ROOM 工作間
WALK IN CLOSET	= 衣帽間
W.M.C.	= WATER METER CABINET 水錶箱
	= OPEN KITCHEN AREA 開放式廚房範圍

Explanatory Notes:

1. There may be architectural features and/or exposed pipes on external walls of some of the floors.
2. Common pipes exposed and/or enclosed in cladding are located at/adjacent to balcony and/or flat roof and/or air conditioner platform and/or external wall of some residential units. Air-conditioner platform(s) and external walls are common areas under the latest draft Deed of Mutual Covenant and Management Agreement of the Development.
3. There are ceiling bulkheads and/or sunken slabs at living rooms, dining rooms, bedrooms, corridors, bathrooms, stores, lavatories, utility rooms, open kitchens and kitchens of some residential units for the air-conditioning system and/or mechanical and electrical services. There are exposed pipes/ducts for air-conditioning system and/or mechanical and electrical services within some stores.
4. Symbols of fittings and fitments shown on the floor plans, such as bathtubs, sinks, water closets, showers, basins, sink counters, etc., are architectural symbols retrieved from the latest approved general building plans and for general indication only and are not indications of their actual locations, sizes, designs and shapes.
5. The internal ceiling height within some residential units may vary due to structural, architectural and/or decoration design variations.
6. There may be communal pipes and/or mechanical and electrical services within the roofs of some residential units.
7. Balconies and utility platforms are non-enclosed areas.

備註：

1. 部份樓層外牆範圍設有建築裝飾及/或外露喉管。
2. 部份住宅單位的露台及/或平台及/或空調機平台及/或外牆上/附近設有外露及/或裝飾板內藏之公用喉管。根據發展項目的公契及管理協議的最新擬稿，空調機平台及外牆為公用地方。
3. 部份住宅單位客廳、飯廳、睡房、走廊、浴室、儲物室、洗手間、工作間、開放式廚房及廚房天花有假陣及/或跌級樓板用以安裝空調系統及/或機電設備。部份儲物室內設有空調系統及/或機電設備之外露喉管/管道槽。
4. 樓面平面圖上所顯示的形象裝置符號，例如浴缸、洗滌盆、坐廁、花灑、洗面盆、洗滌盆櫃等乃摘自最新的經批准的建築圖則，只作一般性標誌而非展示其實際位置、大小、設計及形狀。
5. 部份住宅單位之天花高度將會因應結構、建築設計及/或裝修設計上的需要而有差異。
6. 部份住宅單位天台內裝有公用喉管及/或其他機電設備。
7. 露台及工作平台為不可封閉的地方。

FLOOR PLANS OF RESIDENTIAL PROPERTIES IN THE DEVELOPMENT

發展項目的住宅物業的樓面平面圖

Each Residential Property 每個住宅物業	Floor 樓層	Flat 單位						
		A	B	C	D	E	F	G
The thickness of the floor slabs (excluding plaster) of each residential property (mm) 每個住宅物業的樓板(不包括灰泥)的厚度(毫米)	2/F 2樓	150	150	150	150	150, 175	150, 175, 200	150, 200
The floor-to-floor height of each residential property (mm) 每個住宅物業的層與層之間的高度(毫米)		3110, 3335, 3460, 3465	3110, 3260, 3335, 3460	3110, 3260, 3335, 3460	3110, 3460, 3465	3110, 3335, 3460, 3465	3110, 3335, 3460, 3465	3110, 3335, 3460, 3465

The internal areas of the residential properties on the upper floors will generally be slightly larger than those on the lower floors because of the reducing thickness of the structural walls on the upper floors.

因住宅物業的較高樓層的結構牆的厚度遞減，較高樓層的內部面積，一般比較低樓層的內部面積稍大。

Notes:

- The dimensions of floor plans are all structural dimensions in millimetre.
- Please refer to Page AL01 and Page AL02 of this Sales Brochure for legend of the terms and abbreviations shown in and explanatory notes applicable to the floor plan.

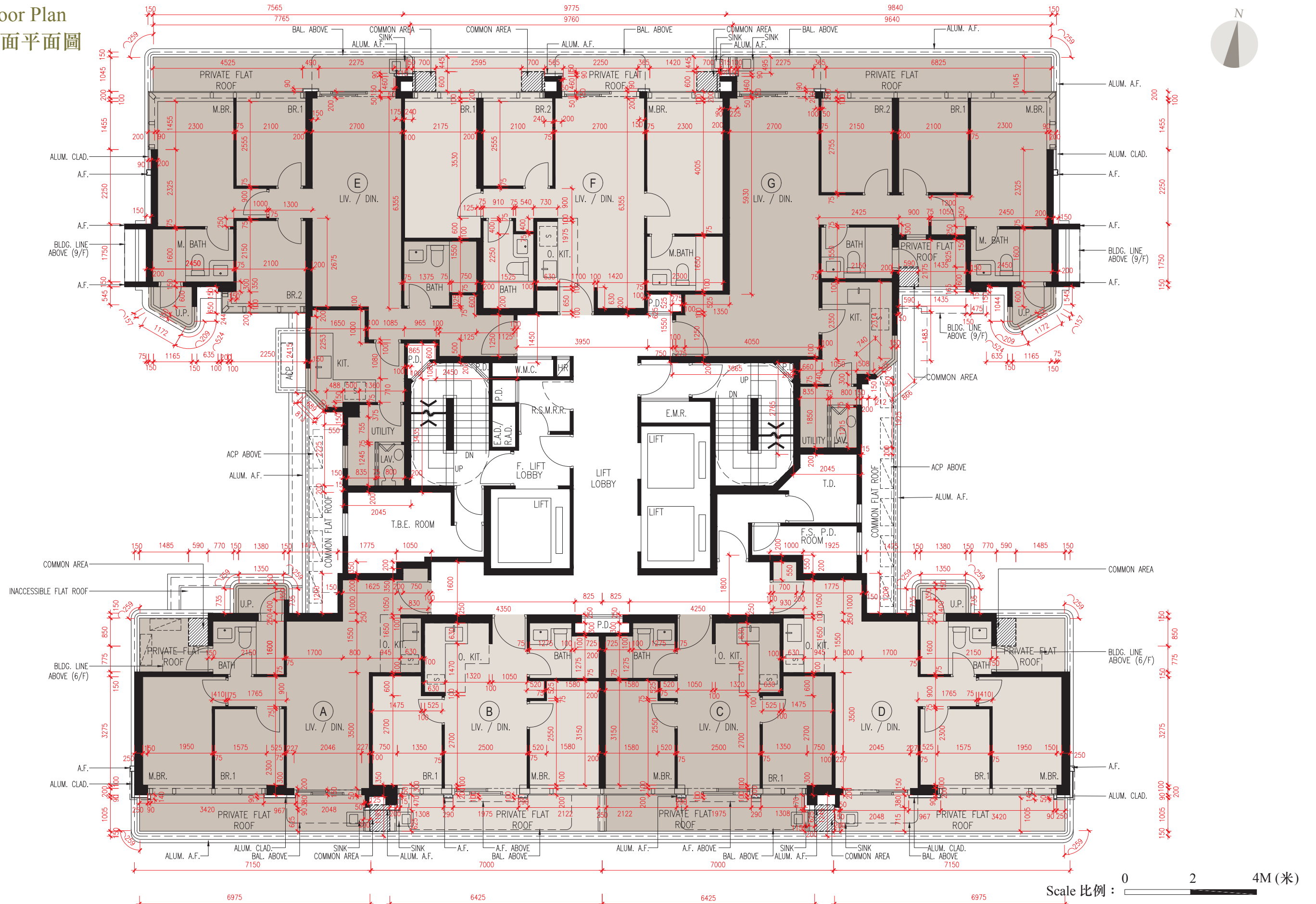
備註：

- 樓面平面圖所列之尺寸數字為以毫米標示的建築結構尺寸。
- 有關樓面平面圖中顯示之名稱及簡稱及備註請參閱本售樓說明書第AL01頁及AL02頁。

FLOOR PLANS OF RESIDENTIAL PROPERTIES IN THE DEVELOPMENT

發展項目的住宅物業的樓面平面圖

2/F Floor Plan
2樓樓面平面圖



FLOOR PLANS OF RESIDENTIAL PROPERTIES IN THE DEVELOPMENT

發展項目的住宅物業的樓面平面圖

Each Residential Property 每個住宅物業	Floor 樓層	Flat 單位						
		A	B	C	D	E	F	G
The thickness of the floor slabs (excluding plaster) of each residential property (mm) 每個住宅物業的樓板 (不包括灰泥) 的厚度 (毫米)	3/F 3樓	150	150	150	150	150, 175	150, 175, 200	150, 200
The floor-to-floor height of each residential property (mm) 每個住宅物業的層與層之間的高度 (毫米)		3110, 3335, 3460	3110, 3260, 3335, 3460	3110, 3260, 3335, 3460	3110, 3460	3110, 3335, 3460	3110, 3335, 3460	3110, 3335, 3460
The thickness of the floor slabs (excluding plaster) of each residential property (mm) 每個住宅物業的樓板 (不包括灰泥) 的厚度 (毫米)	5/F 5樓	150, 200, 600	150, 200	150, 200	150, 200, 600	150, 175	150, 175, 200	150, 200
The floor-to-floor height of each residential property (mm) 每個住宅物業的層與層之間的高度 (毫米)		3110, 3335, 3460	3110, 3335, 3460	3110, 3335, 3460	3110, 3335, 3460	3110, 3335, 3460	3110, 3335, 3460	3110, 3335, 3460

The internal areas of the residential properties on the upper floors will generally be slightly larger than those on the lower floors because of the reducing thickness of the structural walls on the upper floors.

Notes:

- The dimensions of floor plans are all structural dimensions in millimetre.
- Please refer to Page AL01 and Page AL02 of this Sales Brochure for legend of the terms and abbreviations shown in and explanatory notes applicable to the floor plan.

因住宅物業的較高樓層的結構牆的厚度遞減，較高樓層的內部面積，一般比較低樓層的內部面積稍大。

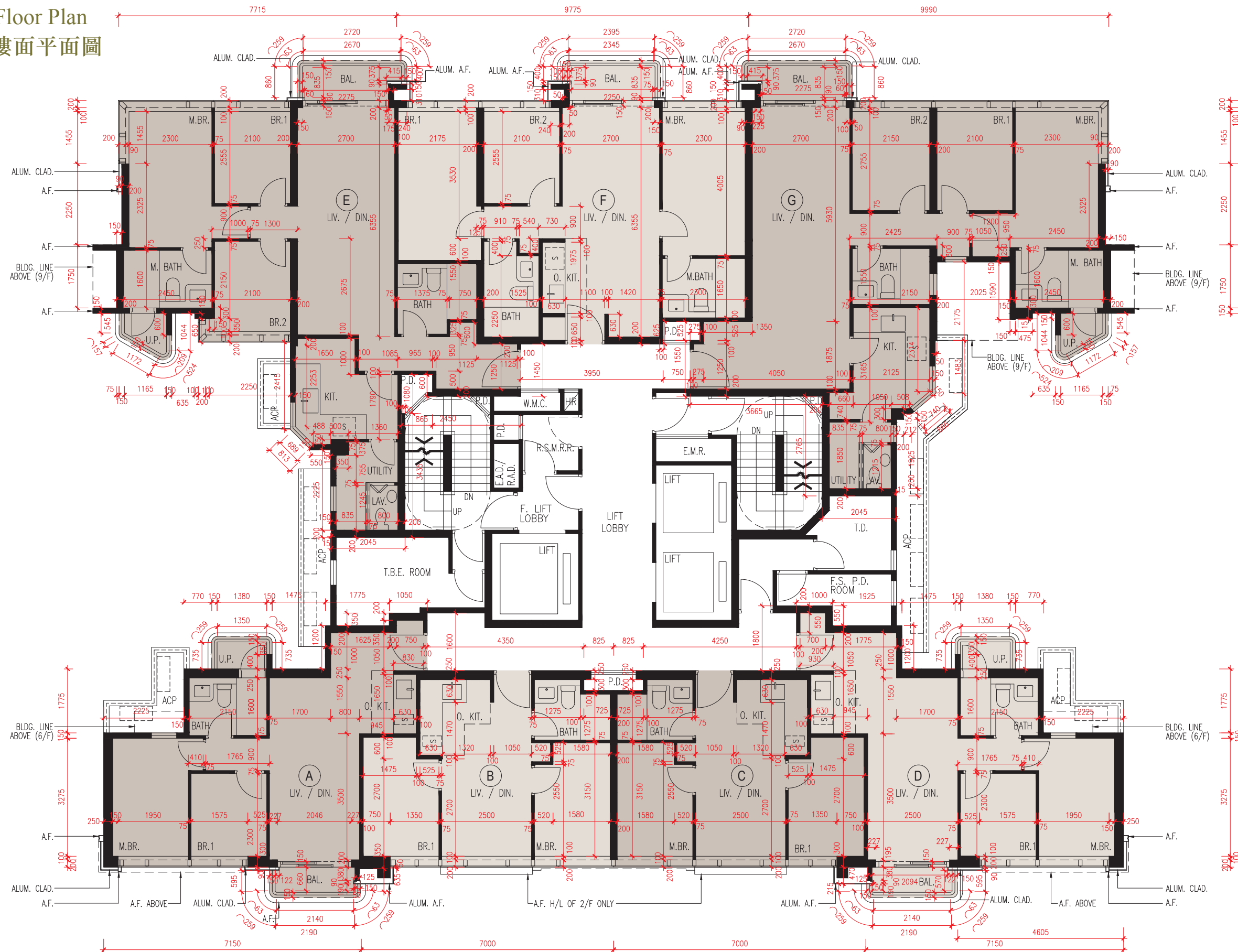
備註：

- 樓面平面圖所列之尺寸數字為以毫米標示的建築結構尺寸。
- 有關樓面平面圖中顯示之名稱及簡稱及備註請參閱本售樓說明書第AL01頁及AL02頁。

FLOOR PLANS OF RESIDENTIAL PROPERTIES IN THE DEVELOPMENT

發展項目的住宅物業的樓面平面圖

3/F & 5/F Floor Plan
3樓及5樓樓面平面圖



Scale 比例: 0 2 4M (米)

FLOOR PLANS OF RESIDENTIAL PROPERTIES IN THE DEVELOPMENT

發展項目的住宅物業的樓面平面圖

Each Residential Property 每個住宅物業	Floor 樓層	Flat 單位				
		A	B	C	D	E
The thickness of the floor slabs (excluding plaster) of each residential property (mm) 每個住宅物業的樓板(不包括灰泥)的厚度(毫米)	6/F & 7/F 6樓及7樓	150	150	150, 175	175, 200	150, 200
The floor-to-floor height of each residential property (mm) 每個住宅物業的層與層之間的高度(毫米)		3110, 3335, 3460	3110, 3335, 3460	3110, 3335, 3460	3110, 3335, 3460	3110, 3335, 3460
The thickness of the floor slabs (excluding plaster) of each residential property (mm) 每個住宅物業的樓板(不包括灰泥)的厚度(毫米)	8/F 8樓	150	150	150, 175	150, 175, 200	150, 200
The floor-to-floor height of each residential property (mm) 每個住宅物業的層與層之間的高度(毫米)		3110, 3335, 3460	3110, 3335, 3460	3110, 3335, 3460	3110, 3335, 3460	3110, 3335, 3460

The internal areas of the residential properties on the upper floors will generally be slightly larger than those on the lower floors because of the reducing thickness of the structural walls on the upper floors.

Notes:

- The dimensions of floor plans are all structural dimensions in millimetre.
- Please refer to Page AL01 and Page AL02 of this Sales Brochure for legend of the terms and abbreviations shown in and explanatory notes applicable to the floor plan.

因住宅物業的較高樓層的結構牆的厚度遞減，較高樓層的內部面積，一般比較低樓層的內部面積稍大。

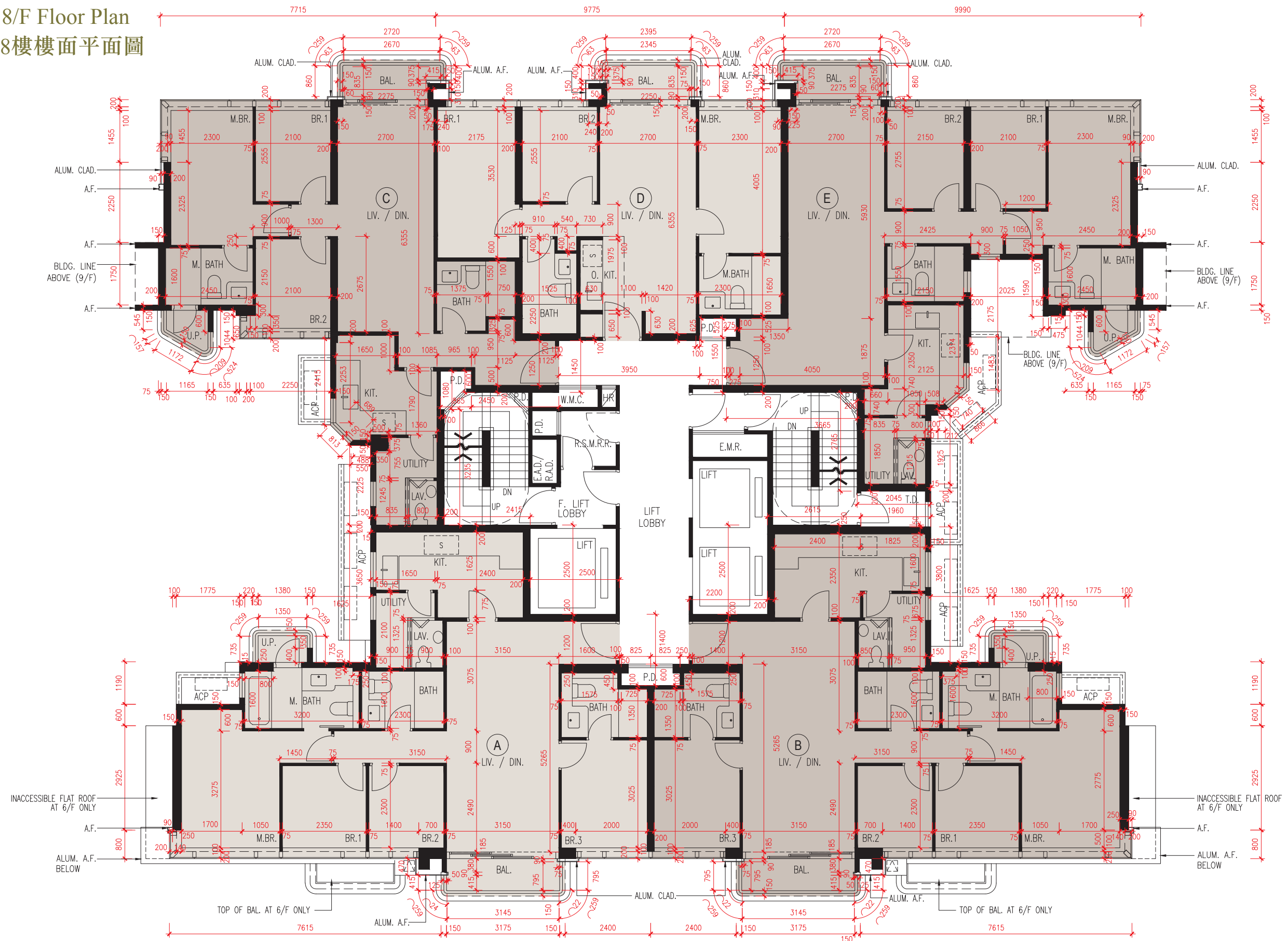
備註：

- 樓面平面圖所列之尺寸數字為以毫米標示的建築結構尺寸。
- 有關樓面平面圖中顯示之名稱及簡稱及備註請參閱本售樓說明書第AL01頁及AL02頁。

FLOOR PLANS OF RESIDENTIAL PROPERTIES IN THE DEVELOPMENT

發展項目的住宅物業的樓面平面圖

6/F to 8/F Floor Plan
6樓至8樓樓面平面圖



Scale 比例 : 0 2 4M (米)

FLOOR PLANS OF RESIDENTIAL PROPERTIES IN THE DEVELOPMENT

發展項目的住宅物業的樓面平面圖

Each Residential Property 每個住宅物業	Floor 樓層	Flat 單位				
		A	B	C	D	E
The thickness of the floor slabs (excluding plaster) of each residential property (mm) 每個住宅物業的樓板(不包括灰泥)的厚度(毫米)	9/F-12/F, 15/F & 16/F 9樓至12樓、 15樓及16樓	150	150	150, 175	150, 200	150, 175, 200
The floor-to-floor height of each residential property (mm) 每個住宅物業的層與層之間的高度(毫米)		3110, 3335, 3460	3110, 3335, 3460	3110, 3335, 3460	3110, 3335, 3460	3110, 3335, 3460
The thickness of the floor slabs (excluding plaster) of each residential property (mm) 每個住宅物業的樓板(不包括灰泥)的厚度(毫米)	17/F 17樓	150	150	150, 275, 200	150, 200	150, 175, 200
The floor-to-floor height of each residential property (mm) 每個住宅物業的層與層之間的高度(毫米)		3110, 3160, 3460	3110, 3160, 3335, 3460	3160, 3460	3160, 3460	3060, 3110, 3160, 3260, 3335, 3460

The internal areas of the residential properties on the upper floors will generally be slightly larger than those on the lower floors because of the reducing thickness of the structural walls on the upper floors.

Notes:

- The dimensions of floor plans are all structural dimensions in millimetre.
- Please refer to Page AL01 and Page AL02 of this Sales Brochure for legend of the terms and abbreviations shown in and explanatory notes applicable to the floor plan.

因住宅物業的較高樓層的結構牆的厚度遞減，較高樓層的內部面積，一般比較低樓層的內部面積稍大。

備註：

- 樓面平面圖所列之尺寸數字為以毫米標示的建築結構尺寸。
- 有關樓面平面圖中顯示之名稱及簡稱及備註請參閱本售樓說明書第AL01頁及AL02頁。

FLOOR PLANS OF RESIDENTIAL PROPERTIES IN THE DEVELOPMENT

發展項目的住宅物業的樓面平面圖

Each Residential Property 每個住宅物業	Floor 樓層	Flat 單位	
		A	B
The thickness of the floor slabs (excluding plaster) of each residential property (mm) 每個住宅物業的樓板(不包括灰泥)的厚度(毫米)	18/F 18樓	150, 175, 200	150, 200
The floor-to-floor height of each residential property (mm) 每個住宅物業的層與層之間的高度(毫米)		3110, 3260, 3335, 3460	3110, 3160, 3260, 3335, 3460

The internal areas of the residential properties on the upper floors will generally be slightly larger than those on the lower floors because of the reducing thickness of the structural walls on the upper floors.

Notes:

- The dimensions of floor plans are all structural dimensions in millimetre.
- Please refer to Page AL01 and Page AL02 of this Sales Brochure for legend of the terms and abbreviations shown in and explanatory notes applicable to the floor plan.

因住宅物業的較高樓層的結構牆的厚度遞減，較高樓層的內部面積，一般比較低樓層的內部面積稍大。

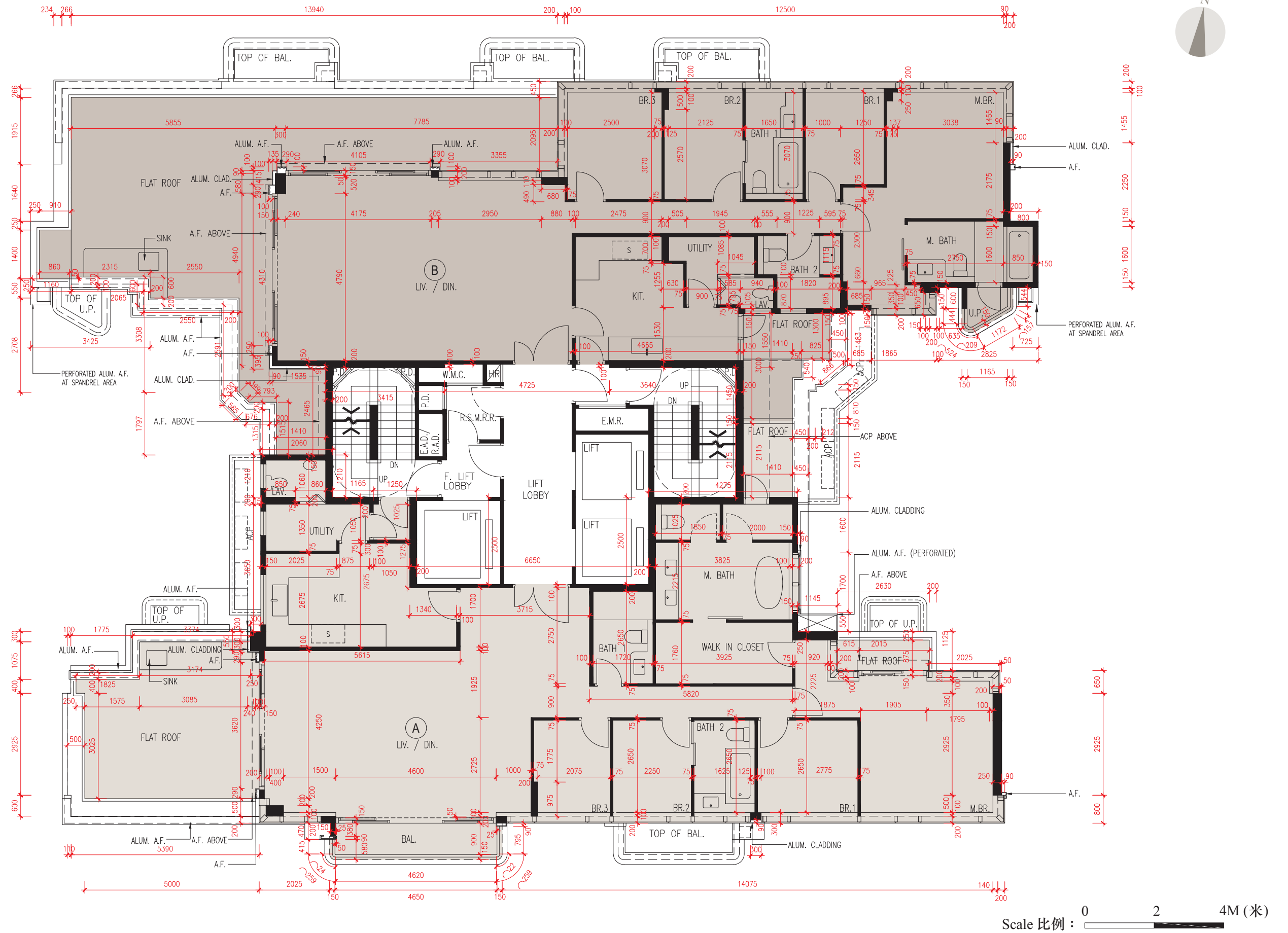
備註：

- 樓面平面圖所列之尺寸數字為以毫米標示的建築結構尺寸。
- 有關樓面平面圖中顯示之名稱及簡稱及備註請參閱本售樓說明書第AL01頁及AL02頁。

FLOOR PLANS OF RESIDENTIAL PROPERTIES IN THE DEVELOPMENT

發展項目的住宅物業的樓面平面圖

18/F Floor Plan
18樓樓面平面圖



FLOOR PLANS OF RESIDENTIAL PROPERTIES IN THE DEVELOPMENT

發展項目的住宅物業的樓面平面圖

Each Residential Property 每個住宅物業	Floor 樓層	Flat 單位	
		A	B
The thickness of the floor slabs (excluding plaster) of each residential property (mm) 每個住宅物業的樓板(不包括灰泥)的厚度(毫米)	19/F 19樓	150, 300	150, 200, 250
The floor-to-floor height of each residential property (mm) 每個住宅物業的層與層之間的高度(毫米)		3460	3460

The internal areas of the residential properties on the upper floors will generally be slightly larger than those on the lower floors because of the reducing thickness of the structural walls on the upper floors.

Notes:

- The dimensions of floor plans are all structural dimensions in millimetre.
- Please refer to Page AL01 and Page AL02 of this Sales Brochure for legend of the terms and abbreviations shown in and explanatory notes applicable to the floor plan.

因住宅物業的較高樓層的結構牆的厚度遞減，較高樓層的內部面積，一般比較低樓層的內部面積稍大。

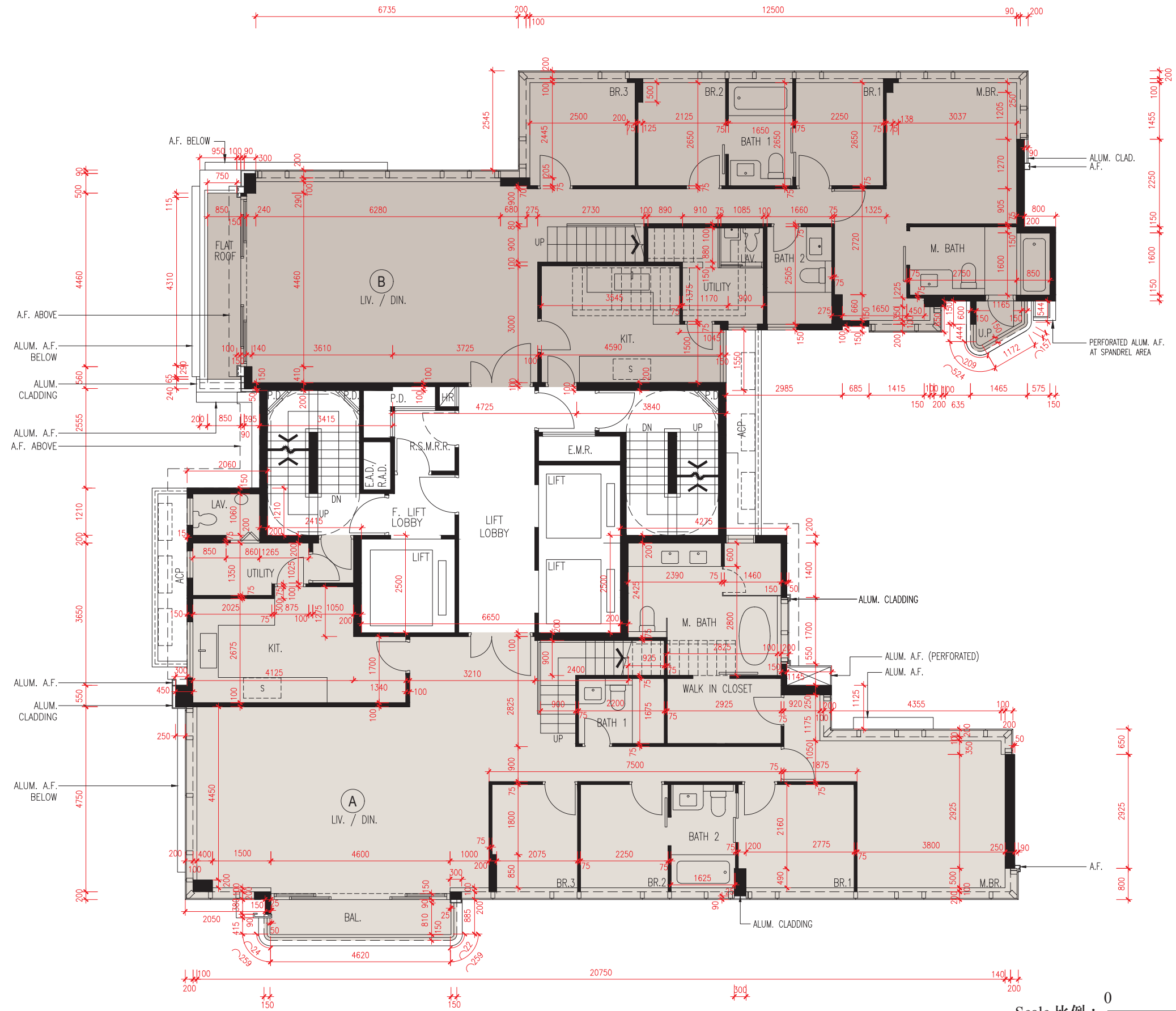
備註：

- 樓面平面圖所列之尺寸數字為以毫米標示的建築結構尺寸。
- 有關樓面平面圖中顯示之名稱及簡稱及備註請參閱本售樓說明書第AL01頁及AL02頁。

FLOOR PLANS OF RESIDENTIAL PROPERTIES IN THE DEVELOPMENT

發展項目的住宅物業的樓面平面圖

19/F Floor Plan
19樓樓面平面圖



Scale 比例 : 0 2 4M (米)

FLOOR PLANS OF RESIDENTIAL PROPERTIES IN THE DEVELOPMENT

發展項目的住宅物業的樓面平面圖

Each Residential Property 每個住宅物業	Floor 樓層	Flat 單位	
		A	B
The thickness of the floor slabs (excluding plaster) of each residential property (mm) 每個住宅物業的樓板(不包括灰泥)的厚度(毫米)	Roof 天台	Not Applicable 不適用	Not Applicable 不適用
The floor-to-floor height of each residential property (mm) 每個住宅物業的層與層之間的高度(毫米)		Not Applicable 不適用	Not Applicable 不適用

The internal areas of the residential properties on the upper floors will generally be slightly larger than those on the lower floors because of the reducing thickness of the structural walls on the upper floors.

Notes:

- The dimensions of floor plans are all structural dimensions in millimetre.
- Please refer to Page AL01 and Page AL02 of this Sales Brochure for legend of the terms and abbreviations shown in and explanatory notes applicable to the floor plan.

因住宅物業的較高樓層的結構牆的厚度遞減，較高樓層的內部面積，一般比較低樓層的內部面積稍大。

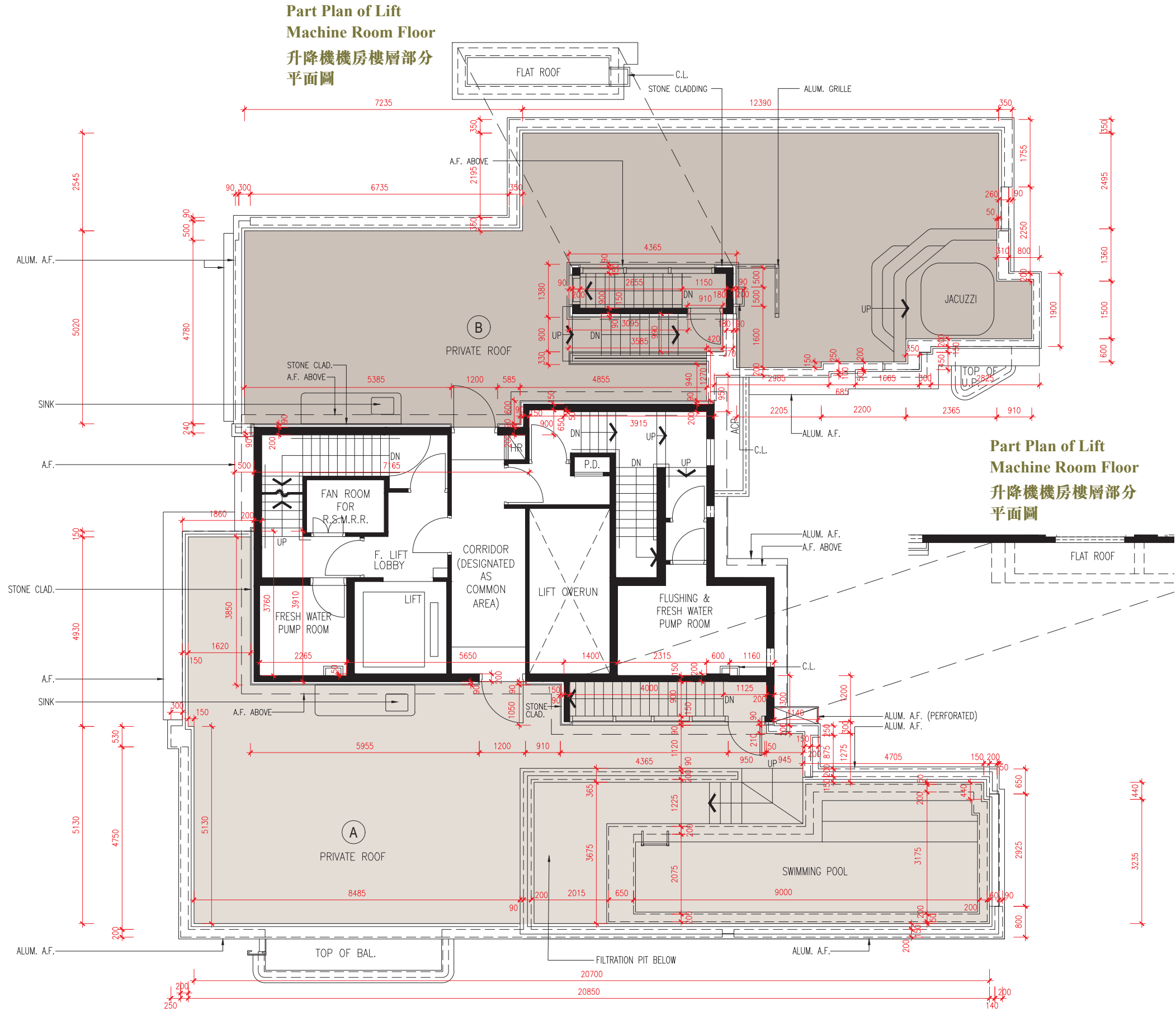
備註：

- 樓面平面圖所列之尺寸數字為以毫米標示的建築結構尺寸。
- 有關樓面平面圖中顯示之名稱及簡稱及備註請參閱本售樓說明書第AL01頁及AL02頁。

FLOOR PLANS OF RESIDENTIAL PROPERTIES IN THE DEVELOPMENT

發展項目的住宅物業的樓面平面圖

Roof Floor Plan
天台樓面平面圖



Scale 比例 : 0 2 4M (米)