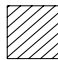

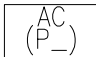


10 發展項目的住宅物業的樓面平面圖 FLOOR PLANS OF RESIDENTIAL PROPERTIES IN THE DEVELOPMENT

平面圖圖例 Legend For Floor Plan

AC	= 空調機 AIR-CONDITIONER
ACP	= 空調機平台 AIR-CONDITIONER PLATFORM
AC ROOM	= 空調機房 AIR-CONDITIONING PLANT ROOM
AF	= 建築裝飾 ARCHITECTURAL FEATURE
BATH	= 浴室 BATHROOM
BAL.	= 露台 BALCONY
BAL. ABOVE	= 露台置上 BALCONY ABOVE
BAL. & U.P. ABOVE	= 露台及工作平台置上 BALCONY AND UTILITY PLATFORM ABOVE
BR2	= 睡房 2 BEDROOM 2
BR3	= 睡房 3 BEDROOM 3
COMMON FLAT ROOF	= 公用平台
CD	= 電纜槽 CABLE DUCT
COVER OF BAL.	= 露台之頂蓋 COVER OF BALCONY
COVER FOR BAL. & U.P.	= 露台及工作平台之頂蓋 COVER FOR BALCONY & UTILITY PLATFORM
DN	= 往下 DOWN
DUCT FLOOR ABOVE SWITCH ROOM	= 掣房上之管道層
EAD	= 排氣管道槽 EXHAUST AIR DUCT
ED1	= 電氣管槽 1 ELECTRICAL DUCT 1
ED2	= 電氣管槽 2 ELECTRICAL DUCT 2
EMR1	= 電錶房 1 ELECTRICITY METER ROOM 1
EMR2	= 電錶房 2 ELECTRICITY METER ROOM 2
ELECT. ROOM	= 電房 ELECTRICITY ROOM
ELV ROOM 1	= 弱電房 1 EXTRA LOW VOLTAGE ROOM 1
ELV ROOM 2	= 弱電房 2 EXTRA LOW VOLTAGE ROOM 2
FLAT ROOF	= 平台
FLUSHING WATER BOOSTER PUMP ROOM	= 沖廁水加壓泵房
HR	= 消防喉轆 HOSE REEL
HS (GR)	= 橫向屏障 (綠化天台) HORIZONTAL SCREEN (GREEN ROOF)
INACCESSIBLE FLAT ROOF	= 無法進入的平台
KIT	= 廚房 KITCHEN
LAV	= 洗手間 LAVATORY
LIFT	= 升降機
LIFT LOBBY	= 升降機大堂
LIFT SHAFT	= 升降機槽
LIV/DIN	= 客飯廳 LIVING & DINING ROOM
MBATH	= 主人浴室 MASTER BATHROOM
MBR	= 主人睡房 MASTER BEDROOM
O. KIT	= 開放式廚房 OPEN KITCHEN
PD	= 管道槽 PIPE DUCT
PENTHOUSE	= 頂層單位
POTABLE WATER BOOSTER PUMP ROOM	= 食水加壓泵房
REFUGE ROOF	= 避難天台
ROOF	= 天台
RSMRR	= 垃圾及物料回收房 REFUSE STORAGE AND MATERIAL RECOVERY ROOM
STO	= 儲物室 STORE ROOM
SWITCH ROOM	= 掣房
TOP OF C.W.	= 玻璃幕牆之頂部 TOP OF CURTAIN WALL
TOP OF C.W. BELOW AF	= 建築裝飾下方之玻璃幕牆之頂部 TOP OF CURTAIN WALL BELOW ARCHITECTURAL FEATURE
T.P.	= 轉換層 TRANSFER PLATE

TRANSFER PLATE ABOVE	= 轉換層置上
UP	= 往上
U.P.	= 工作平台 UTILITY PLATFORM
WMC	= 水錶櫃 WATER METER CABINET
WMR	= 水錶房 WATER METER ROOM
N1	= 強效減音露台 (擋音式) ENHANCED ACOUSTIC BALCONY (BAFFLE TYPE)
N2	= 減音窗 (擋音式) ACOUSTIC WINDOW (BAFFLE TYPE)
N3	= 固定玻璃連維修窗 FIXED GLAZING WITH MAINTENANCE WINDOW
N4	= 自動關閉式門 AUTO-CLOSING DOOR
N5	= 置於鋼筋混凝土樓上之玻璃欄杆 (離地台完成面1.5米高) GLASS BALUSTRADE ON RC CURB 1.5M HIGH FROM FINISHED FLOOR LEVEL
N6	= 安裝在上方露台及工作平台底部天花的吸音物料 SOUND ABSORPTIVE MATERIAL AT CEILING UNDERSIDE OF BAL & U.P. ABOVE
N7	= 置於鋼筋混凝土樓上之玻璃欄杆 (離地台完成面1.25米高) GLASS BALUSTRADE ON RC CURB 1.25M HIGH FROM FINISHED FLOOR LEVEL
FENCE WALL 1150H FROM FFL	= 圍牆 (離地台完成面1.15米高) FENCE WALL 1.15M HIGH FROM FINISHED FLOOR LEVEL
FENCE WALL 1250H FROM FFL	= 圍牆 (離地台完成面1.25米高) FENCE WALL 1.25M HIGH FROM FINISHED FLOOR LEVEL
FENCE WALL 1500H FROM FFL	= 圍牆 (離地台完成面1.5米高) FENCE WALL 1.5M HIGH FROM FINISHED FLOOR LEVEL
FULL HEIGHT FENCE WALL	= 全高圍牆
	= 公用範圍 COMMON AREA
	= 平台上供__單位擺放空調裝置之位置 AREA ON FLAT ROOF FOR AIR-CONDITIONING FOR UNIT __
	= 平台上供頂層單位__擺放空調裝置之位置 AREA ON FLAT ROOF FOR AIR-CONDITIONING FOR PENTHOUSE __

適用於本節各樓面平面圖之備註：

- 部份樓層外牆範圍設有建築裝飾。詳細資料請參考最新經批准的建築圖則。
- 部份住宅單位的露台及/或平台及/或外牆處或附近設有外露之公用喉管。
- 部份住宅單位客廳、飯廳、睡房、走廊、浴室、儲物室、洗手間及廚房天花有跌級樓板及/或假天花用以裝置冷氣系統及/或其他機電設備。部份儲物室及洗手間內設有冷氣及/或機電設備之外露喉管/管道。
- 露台及露台下的有蓋地方和工作平台及工作平台下的有蓋地方為不可封閉的地方。
- 樓面平面圖上所顯示的裝置符號，如浴缸、洗滌盆、座廁、花灑、洗滌盆櫃、爐具等乃按最新的經批准的建築圖則繪製，只作一般示意用途。

Notes applicable to the floor plans of this section :

- There may be architectural features on external walls of some of the floors. For details, please refer to the latest approved building plans.
- Common pipes exposed are located at or adjacent to balcony and/or flat roof and/ or external wall of some residential units.
- There are sunken slabs and/or ceiling bulkheads at the ceiling of living rooms, dining rooms, bedrooms, corridors, bathrooms, store rooms, lavatories and kitchens of some residential units for the installation of air-conditioning system and/or other mechanical & electrical services. There are exposed pipes/ ductings for air-conditioning system and/or mechanical & electrical services within some store rooms and lavatories.
- Balconies and the covered areas underneath the balconies and utility platforms and the covered areas underneath the utility platforms are non-enclosed areas.
- Symbols of fittings and fitments shown on floor plans such as bath tub, sink, water closet, shower, sink counter, stove, etc. are prepared based on the latest approved building plans and are for general indication only.

10 發展項目的住宅物業的樓面平面圖 FLOOR PLANS OF RESIDENTIAL PROPERTIES IN THE DEVELOPMENT

2樓平面圖
2/F Plan



10 發展項目的住宅物業的樓面平面圖 FLOOR PLANS OF RESIDENTIAL PROPERTIES IN THE DEVELOPMENT

每個住宅物業 Each Residential Property	樓層 Floor	單位 Unit												
		A8	B1	B2	B3	B6	B7	B8	C8	D3	D6	D7	D8	D9
層與層之間的高度 (毫米) The floor-to-floor height (mm)	2樓 2/F	3150, 3200, 3500	3150, 3200, 3250, 3500, 3550	3150, 3200, 3500	3150, 3200, 3500	3150, 3200, 3250, 3500	3150, 3200, 3250, 3500	3150, 3200, 3500	3150, 3200, 3250, 3500	3150, 3200, 3250, 3500	3150, 3200, 3500	3150, 3200, 3250, 3500	3150, 3200, 3250, 3450, 3500	3150, 3200, 3250, 3500
樓板 (不包括灰泥) 厚度 (毫米) The thickness of the floor slabs (excluding plaster) (mm)		150, 200	150	150	150	100, 150	150	150, 200	200	150	100, 150	150	100, 150	200

因住宅物業的較高樓層的結構牆的厚度遞減，較高樓層的內部面積，一般比較低樓層的內部面積稍大。(註：此乃根據《一手住宅物業銷售條例》(第621章)附表1第1部第10(2)(e)條所規定的陳述，並不適用於發展項目。)
The internal areas of the residential properties on the upper floors will generally be slightly larger than those on the lower floors because of the reducing thickness of the structural walls on the upper floors. (Note: This statement is required under Section 10(2)(e) in Part 1 of Schedule 1 of the Residential Properties (First-hand Sales) Ordinance (Cap.621) but is not applicable to the Development.)

備註：

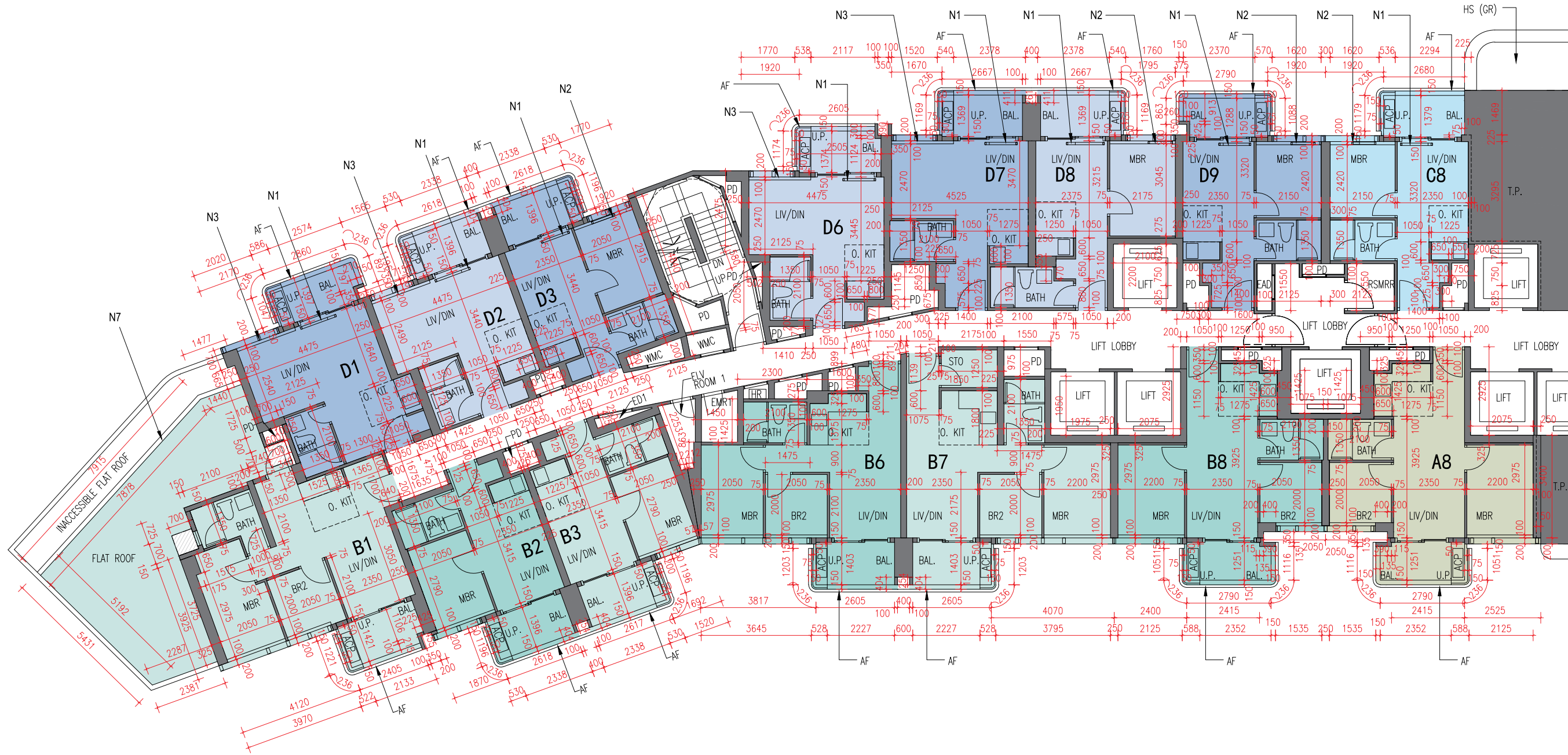
- 樓面平面圖之尺規所列數字為以毫米標示之建築結構尺寸。
- 每個住宅物業的層與層之間的高度指該樓層之結構地台面與上一層結構地台面之高度距離。
- 每個住宅物業的樓板的厚度不包括灰泥。
- 請參閱本售樓說明書第22頁為住宅物業樓面平面圖而設之備註及名詞及簡稱的圖例。

Notes:

- The dimensions in the floor plans are all structural dimensions in millimetre.
- The floor-to-floor height refers to the height between the top surface of the structural slab of a floor and the top surface of the structural slab of its immediate upper floor of each residential property.
- The thickness of the floor slabs excludes plaster of each residential property.
- Please refer to Page 22 of this sales brochure for legend of the terms and abbreviations in studying the floor plans.

10 發展項目的住宅物業的樓面平面圖 FLOOR PLANS OF RESIDENTIAL PROPERTIES IN THE DEVELOPMENT

3樓平面圖
3/F Plan



10 發展項目的住宅物業的樓面平面圖 FLOOR PLANS OF RESIDENTIAL PROPERTIES IN THE DEVELOPMENT

每個住宅物業 Each Residential Property	樓層 Floor	單位 Unit														
		A8	B1	B2	B3	B6	B7	B8	C8	D1	D2	D3	D6	D7	D8	D9
層與層之間的高度 (毫米) The floor-to-floor height (mm)	3樓 3/F	2900, 2950, 3250	2900, 3000, 3200, 3250, 3300	2900, 2950, 3250	2900, 2950, 3250	2900, 2950, 3000, 3250	2900, 2950, 3000, 3250	2900, 2950, 3250	2900, 2950, 3000, 3250	2850, 2900, 3000, 3250	2900, 2950, 3250	2900, 2950, 3000, 3250	2900, 2950, 3250	2900, 2950, 3000, 3250	2900, 2950, 3000, 3250	2900, 2950, 3000, 3250
樓板 (不包括灰泥) 厚度 (毫米) The thickness of the floor slabs (excluding plaster) (mm)		150, 200	150	150	150	100, 150	150	150, 200	200	100, 150	100, 150	150	100, 150	150	100, 150	200

因住宅物業的較高樓層的結構牆的厚度遞減，較高樓層的內部面積，一般比較低樓層的內部面積稍大。(註：此乃根據《一手住宅物業銷售條例》(第621章)附表1第1部第10(2)(e)條所規定的陳述，並不適用於發展項目。)
The internal areas of the residential properties on the upper floors will generally be slightly larger than those on the lower floors because of the reducing thickness of the structural walls on the upper floors. (Note: This statement is required under Section 10(2)(e) in Part 1 of Schedule 1 of the Residential Properties (First-hand Sales) Ordinance (Cap.621) but is not applicable to the Development.)

備註：

- 樓面平面圖之尺規所列數字為以毫米標示之建築結構尺寸。
- 每個住宅物業的層與層之間的高度指該樓層之結構地台面與上一層結構地台面之高度距離。
- 每個住宅物業的樓板的厚度不包括灰泥。
- 請參閱本售樓說明書第22頁為住宅物業樓面平面圖而設之備註及名詞及簡稱的圖例。

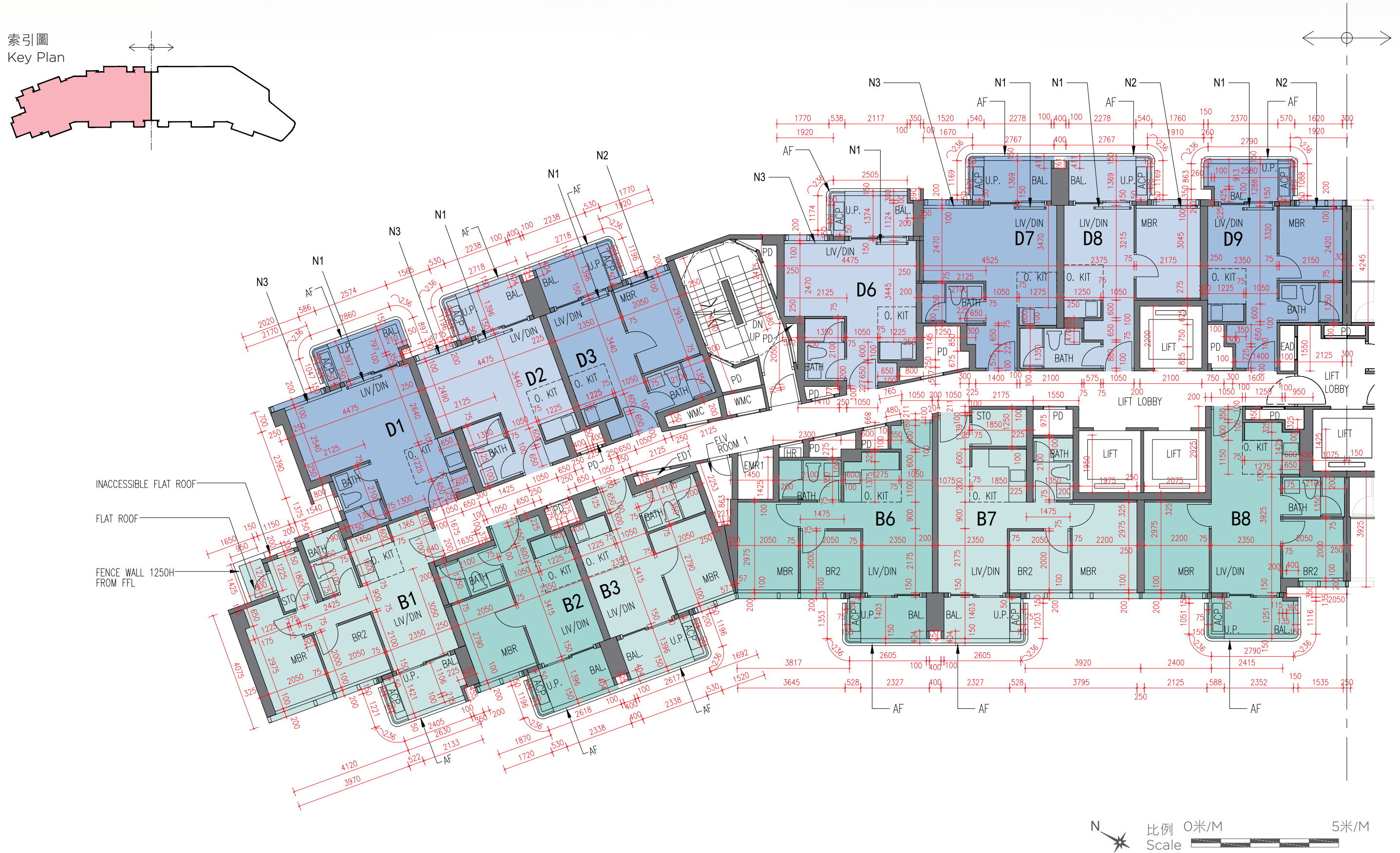
Notes:

- The dimensions in the floor plans are all structural dimensions in millimetre.
- The floor-to-floor height refers to the height between the top surface of the structural slab of a floor and the top surface of the structural slab of its immediate upper floor of each residential property.
- The thickness of the floor slabs excludes plaster of each residential property.
- Please refer to Page 22 of this sales brochure for legend of the terms and abbreviations in studying the floor plans.

10 發展項目的住宅物業的樓面平面圖 FLOOR PLANS OF RESIDENTIAL PROPERTIES IN THE DEVELOPMENT

5樓平面圖
5/F Plan

索引圖
Key Plan



10 發展項目的住宅物業的樓面平面圖 FLOOR PLANS OF RESIDENTIAL PROPERTIES IN THE DEVELOPMENT

5樓平面圖
5/F Plan



10 發展項目的住宅物業的樓面平面圖 FLOOR PLANS OF RESIDENTIAL PROPERTIES IN THE DEVELOPMENT

每個住宅物業 Each Residential Property	樓層 Floor	單位 Unit												
		B1	B2	B3	B6	B7	B8	D1	D2	D3	D6	D7	D8	D9
層與層之間的高度 (毫米) The floor-to-floor height (mm)	5樓 5/F	2900, 3000, 3050, 3250	2900, 2950, 3250	2900, 2950, 3250	2900, 2950, 3000, 3250	2900, 2950, 3000, 3250	2900, 2950, 3250	2850, 2900, 3000, 3250	2900, 2950, 3250	2900, 2950, 3000, 3250	2900, 2950, 3250	2900, 2950, 3000, 3250	2900, 2950, 3000, 3200, 3250	2900, 2950, 3000, 3250
樓板 (不包括灰泥) 厚度 (毫米) The thickness of the floor slabs (excluding plaster) (mm)		150	150	150	100, 150	150	125, 150, 175	100, 150	100, 150	150	100, 150	150	100, 150	150

因住宅物業的較高樓層的結構牆的厚度遞減，較高樓層的內部面積，一般比較低樓層的內部面積稍大。(註：此乃根據《一手住宅物業銷售條例》(第621章)附表1第1部第10(2)(e)條所規定的陳述，並不適用於發展項目。)
The internal areas of the residential properties on the upper floors will generally be slightly larger than those on the lower floors because of the reducing thickness of the structural walls on the upper floors. (Note: This statement is required under Section 10(2)(e) in Part 1 of Schedule 1 of the Residential Properties (First-hand Sales) Ordinance (Cap.621) but is not applicable to the Development.)

備註：

- 樓面平面圖之尺規所列數字為以毫米標示之建築結構尺寸。
- 每個住宅物業的層與層之間的高度指該樓層之結構地台面與上一層結構地台面之高度距離。
- 每個住宅物業的樓板的厚度不包括灰泥。
- 請參閱本售樓說明書第22頁為住宅物業樓面平面圖而設之備註及名詞及簡稱的圖例。

Notes:

- The dimensions in the floor plans are all structural dimensions in millimetre.
- The floor-to-floor height refers to the height between the top surface of the structural slab of a floor and the top surface of the structural slab of its immediate upper floor of each residential property.
- The thickness of the floor slabs excludes plaster of each residential property.
- Please refer to Page 22 of this sales brochure for legend of the terms and abbreviations in studying the floor plans.

10 發展項目的住宅物業的樓面平面圖 FLOOR PLANS OF RESIDENTIAL PROPERTIES IN THE DEVELOPMENT

每個住宅物業 Each Residential Property	樓層 Floor	單位 Unit											
		A1	A2	A3	A6	A7	A8	C1	C2	C3	C6	C7	C8
層與層之間的高度 (毫米) The floor-to-floor height (mm)	5樓 5/F	2900, 3000, 3050, 3250	2900, 2950, 3250	2900, 2950, 3250	2900, 2950, 3000, 3250	2900, 2950, 3000, 3250	2900, 2950, 3250	2900, 2950, 3000, 3250	2900, 2950, 3000, 3250	2900, 2950, 3000, 3250	2900, 2950, 3000, 3250	2900, 2950, 3000, 3200, 3250	2900, 2950, 3000, 3250
樓板 (不包括灰泥) 厚度 (毫米) The thickness of the floor slabs (excluding plaster) (mm)		150	150	150	100, 150	150	125,150, 175	150	150	150	150	150	100, 150

因住宅物業的較高樓層的結構牆的厚度遞減，較高樓層的內部面積，一般比較低樓層的內部面積稍大。(註：此乃根據《一手住宅物業銷售條例》(第621章)附表1第1部第10(2)(e)條所規定的陳述，並不適用於發展項目。)
The internal areas of the residential properties on the upper floors will generally be slightly larger than those on the lower floors because of the reducing thickness of the structural walls on the upper floors. (Note: This statement is required under Section 10(2)(e) in Part 1 of Schedule 1 of the Residential Properties (First-hand Sales) Ordinance (Cap.621) but is not applicable to the Development.)

備註：

- 樓面平面圖之尺規所列數字為以毫米標示之建築結構尺寸。
- 每個住宅物業的層與層之間的高度指該樓層之結構地台面與上一層結構地台面之高度距離。
- 每個住宅物業的樓板的厚度不包括灰泥。
- 請參閱本售樓說明書第22頁為住宅物業樓面平面圖而設之備註及名詞及簡稱的圖例。

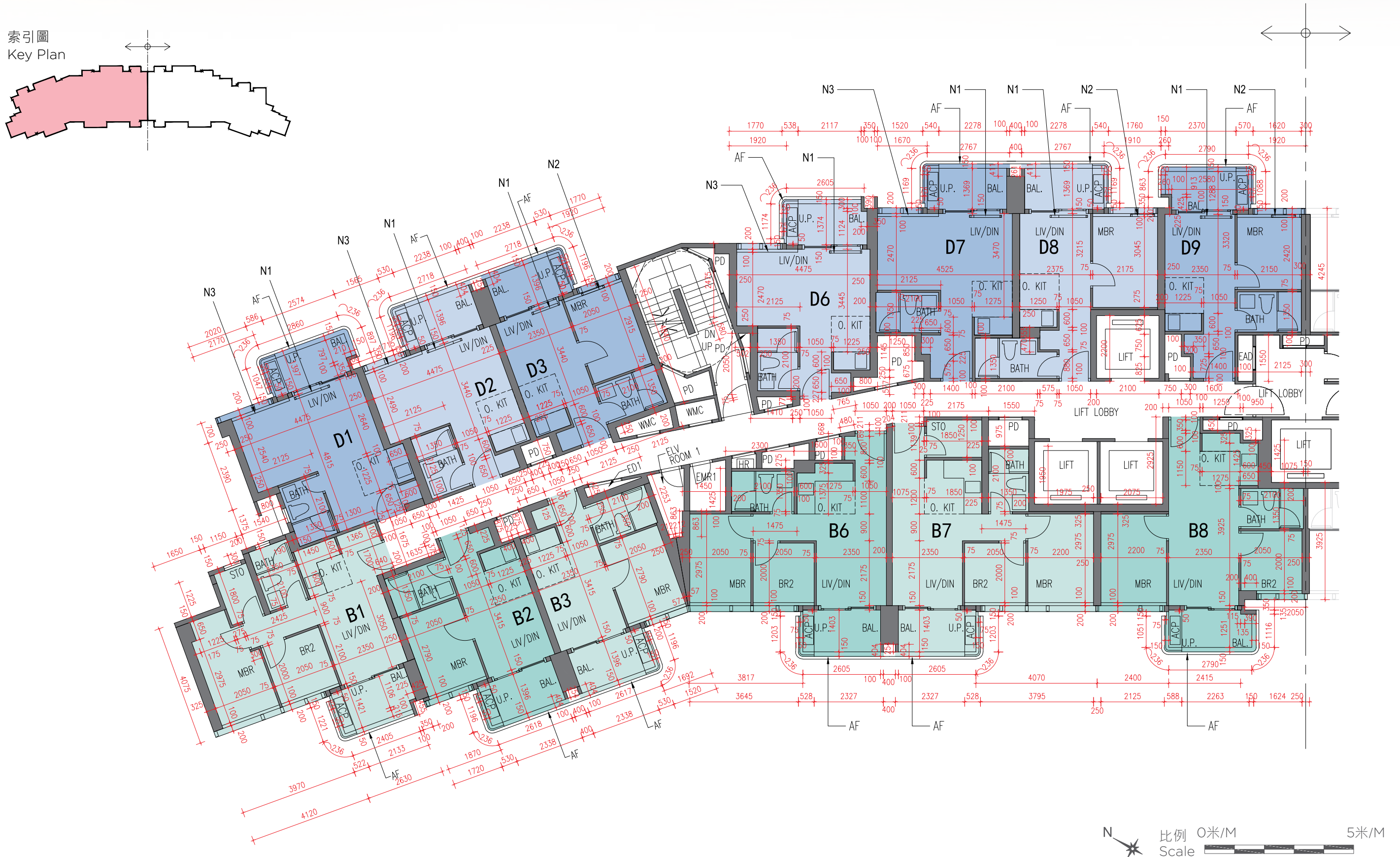
Notes:

- The dimensions in the floor plans are all structural dimensions in millimetre.
- The floor-to-floor height refers to the height between the top surface of the structural slab of a floor and the top surface of the structural slab of its immediate upper floor of each residential property.
- The thickness of the floor slabs excludes plaster of each residential property.
- Please refer to Page 22 of this sales brochure for legend of the terms and abbreviations in studying the floor plans.

10 發展項目的住宅物業的樓面平面圖 FLOOR PLANS OF RESIDENTIAL PROPERTIES IN THE DEVELOPMENT

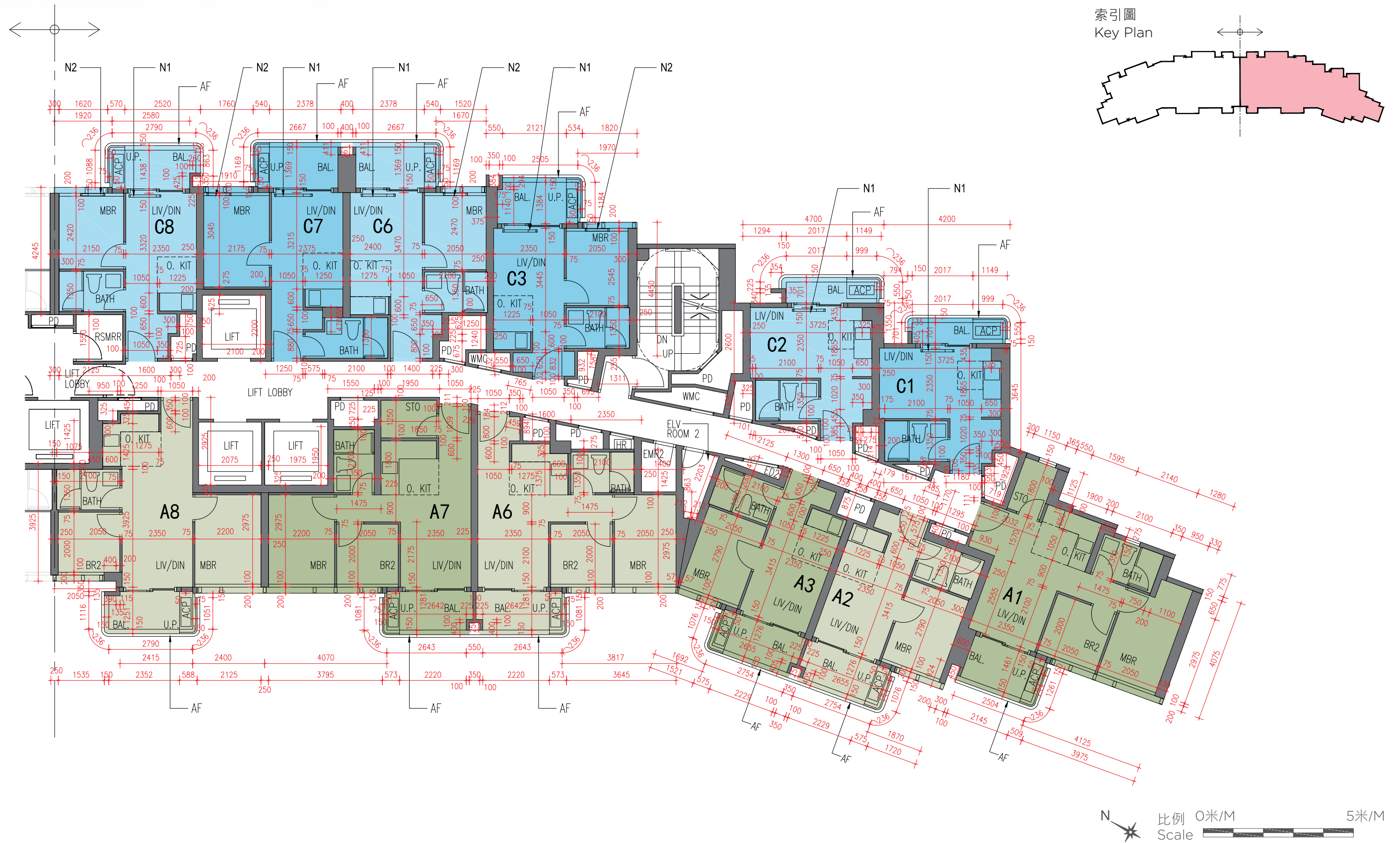
6樓平面圖
6/F Plan

索引圖
Key Plan



10 發展項目的住宅物業的樓面平面圖 FLOOR PLANS OF RESIDENTIAL PROPERTIES IN THE DEVELOPMENT

6樓平面圖
6/F Plan



10 發展項目的住宅物業的樓面平面圖 FLOOR PLANS OF RESIDENTIAL PROPERTIES IN THE DEVELOPMENT

每個住宅物業 Each Residential Property	樓層 Floor	單位 Unit												
		B1	B2	B3	B6	B7	B8	D1	D2	D3	D6	D7	D8	D9
層與層之間的高度 (毫米) The floor-to-floor height (mm)	6樓 6/F	2900, 3000, 3050, 3250	2900, 2950, 3250	2900, 2950, 3250	2900, 2950, 3000, 3250	2900, 2950, 3000, 3250	2900, 2950, 3250	2900, 2950, 3250	2850, 2900, 3000, 3250	2900, 2950, 3250	2900, 2950, 3000, 3250	2900, 2950, 3250	2900, 2950, 3000, 3250	2900, 2950, 3000, 3250
樓板 (不包括灰泥) 厚度 (毫米) The thickness of the floor slabs (excluding plaster) (mm)		150	150	150	100, 150	150	125, 150, 175	100, 150	100, 150	150	100, 150	150	100, 150	150

因住宅物業的較高樓層的結構牆的厚度遞減，較高樓層的內部面積，一般比較低樓層的內部面積稍大。(註：此乃根據《一手住宅物業銷售條例》(第621章)附表1第1部第10(2)(e)條所規定的陳述，並不適用於發展項目。)
The internal areas of the residential properties on the upper floors will generally be slightly larger than those on the lower floors because of the reducing thickness of the structural walls on the upper floors. (Note: This statement is required under Section 10(2)(e) in Part 1 of Schedule 1 of the Residential Properties (First-hand Sales) Ordinance (Cap.621) but is not applicable to the Development.)

備註：

- 樓面平面圖之尺規所列數字為以毫米標示之建築結構尺寸。
- 每個住宅物業的層與層之間的高度指該樓層之結構地台面與上一層結構地台面之高度距離。
- 每個住宅物業的樓板的厚度不包括灰泥。
- 請參閱本售樓說明書第22頁為住宅物業樓面平面圖而設之備註及名詞及簡稱的圖例。

Notes:

- The dimensions in the floor plans are all structural dimensions in millimetre.
- The floor-to-floor height refers to the height between the top surface of the structural slab of a floor and the top surface of the structural slab of its immediate upper floor of each residential property.
- The thickness of the floor slabs excludes plaster of each residential property.
- Please refer to Page 22 of this sales brochure for legend of the terms and abbreviations in studying the floor plans.

10 發展項目的住宅物業的樓面平面圖 FLOOR PLANS OF RESIDENTIAL PROPERTIES IN THE DEVELOPMENT

每個住宅物業 Each Residential Property	樓層 Floor	單位 Unit											
		A1	A2	A3	A6	A7	A8	C1	C2	C3	C6	C7	C8
層與層之間的高度 (毫米) The floor-to-floor height (mm)	6樓 6/F	2900, 3000, 3050, 3250	2900, 2950, 3250	2900, 2950, 3250	2900, 2950, 3000, 3250	2900, 2950, 3000, 3250	2900, 2950, 3250	2900, 2950, 3000, 3250	2900, 2950, 3000, 3250	2900, 2950, 3000, 3250	2900, 2950, 3000, 3250	2900, 2950, 3000, 3200, 3250	2900, 2950, 3000, 3250
樓板 (不包括灰泥) 厚度 (毫米) The thickness of the floor slabs (excluding plaster) (mm)		150	150	150	100, 150	150	125, 150, 175	150	150	150	150	150	100, 150

因住宅物業的較高樓層的結構牆的厚度遞減，較高樓層的內部面積，一般比較低樓層的內部面積稍大。(註：此乃根據《一手住宅物業銷售條例》(第621章)附表1第1部第10(2)(e)條所規定的陳述，並不適用於發展項目。)
The internal areas of the residential properties on the upper floors will generally be slightly larger than those on the lower floors because of the reducing thickness of the structural walls on the upper floors. (Note: This statement is required under Section 10(2)(e) in Part 1 of Schedule 1 of the Residential Properties (First-hand Sales) Ordinance (Cap.621) but is not applicable to the Development.)

備註：

- 樓面平面圖之尺規所列數字為以毫米標示之建築結構尺寸。
- 每個住宅物業的層與層之間的高度指該樓層之結構地台面與上一層結構地台面之高度距離。
- 每個住宅物業的樓板的厚度不包括灰泥。
- 請參閱本售樓說明書第22頁為住宅物業樓面平面圖而設之備註及名詞及簡稱的圖例。

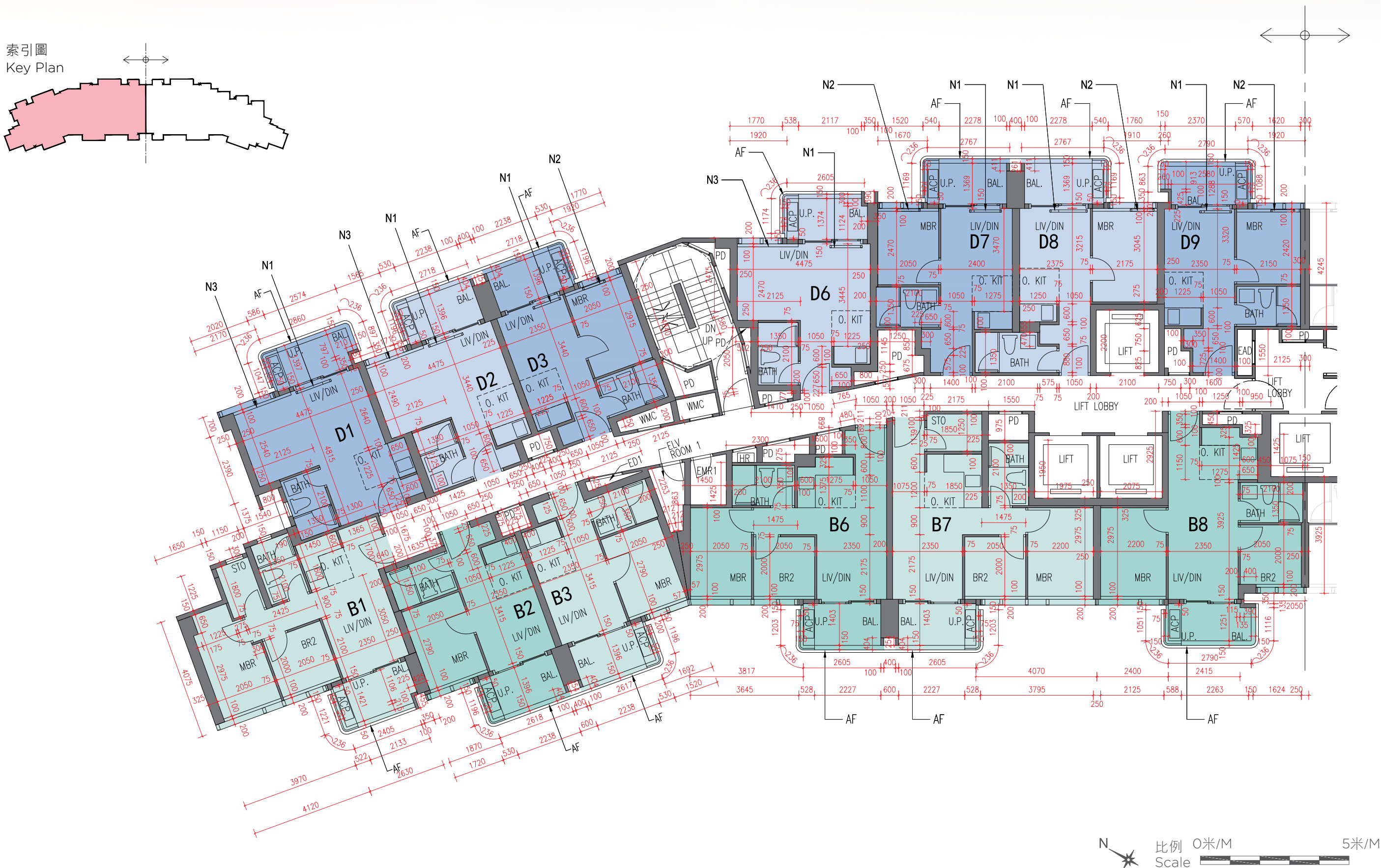
Notes:

- The dimensions in the floor plans are all structural dimensions in millimetre.
- The floor-to-floor height refers to the height between the top surface of the structural slab of a floor and the top surface of the structural slab of its immediate upper floor of each residential property.
- The thickness of the floor slabs excludes plaster of each residential property.
- Please refer to Page 22 of this sales brochure for legend of the terms and abbreviations in studying the floor plans.

10 發展項目的住宅物業的樓面平面圖 FLOOR PLANS OF RESIDENTIAL PROPERTIES IN THE DEVELOPMENT

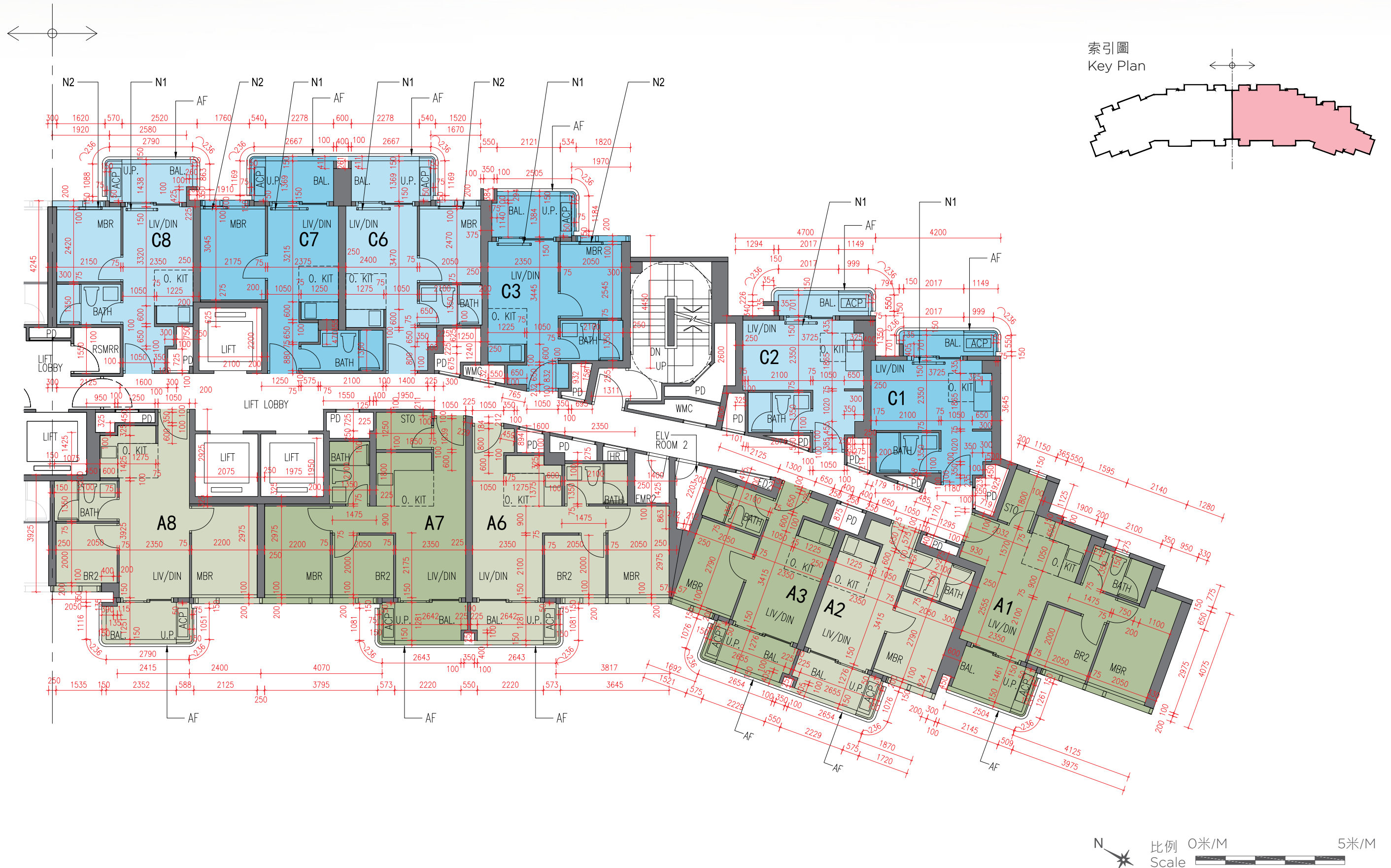
7樓平面圖
7/F Plan

索引圖
Key Plan



10 發展項目的住宅物業的樓面平面圖 FLOOR PLANS OF RESIDENTIAL PROPERTIES IN THE DEVELOPMENT

7樓平面圖
7/F Plan



10 發展項目的住宅物業的樓面平面圖 FLOOR PLANS OF RESIDENTIAL PROPERTIES IN THE DEVELOPMENT

每個住宅物業 Each Residential Property	樓層 Floor	單位 Unit												
		B1	B2	B3	B6	B7	B8	D1	D2	D3	D6	D7	D8	D9
層與層之間的高度 (毫米) The floor-to-floor height (mm)	7樓 7/F	2900, 3000, 3050, 3250	2900, 2950, 3250	2900, 2950, 3250	2900, 2950, 3000, 3250	2900, 2950, 3000, 3250	2900, 2950, 3250	2850, 2900, 3000, 3250	2900, 2950, 3250	2900, 2950, 3000, 3250	2900, 2950, 3250	2900, 2950, 3000, 3250	2900, 2950, 3000, 3200, 3250	2900, 2950, 3000, 3250
樓板 (不包括灰泥) 厚度 (毫米) The thickness of the floor slabs (excluding plaster) (mm)		150	150	150	100, 150	150	125, 150, 175	100, 150	100, 150	150	100, 150	150	100, 150	150

因住宅物業的較高樓層的結構牆的厚度遞減，較高樓層的內部面積，一般比較低樓層的內部面積稍大。(註：此乃根據《一手住宅物業銷售條例》(第621章)附表1第1部第10(2)(e)條所規定的陳述，並不適用於發展項目。)

The internal areas of the residential properties on the upper floors will generally be slightly larger than those on the lower floors because of the reducing thickness of the structural walls on the upper floors. (Note: This statement is required under Section 10(2)(e) in Part 1 of Schedule 1 of the Residential Properties (First-hand Sales) Ordinance (Cap.621) but is not applicable to the Development.)

備註：

- 樓面平面圖之尺規所列數字為以毫米標示之建築結構尺寸。
- 每個住宅物業的層與層之間的高度指該樓層之結構地台面與上一層結構地台面之高度距離。
- 每個住宅物業的樓板的厚度不包括灰泥。
- 請參閱本售樓說明書第22頁為住宅物業樓面平面圖而設之備註及名詞及簡稱的圖例。

Notes:

- The dimensions in the floor plans are all structural dimensions in millimetre.
- The floor-to-floor height refers to the height between the top surface of the structural slab of a floor and the top surface of the structural slab of its immediate upper floor of each residential property.
- The thickness of the floor slabs excludes plaster of each residential property.
- Please refer to Page 22 of this sales brochure for legend of the terms and abbreviations in studying the floor plans.

10 發展項目的住宅物業的樓面平面圖 FLOOR PLANS OF RESIDENTIAL PROPERTIES IN THE DEVELOPMENT

每個住宅物業 Each Residential Property	樓層 Floor	單位 Unit											
		A1	A2	A3	A6	A7	A8	C1	C2	C3	C6	C7	C8
層與層之間的高度 (毫米) The floor-to-floor height (mm)	7樓 7/F	2900, 3000, 3050, 3250	2900, 2950, 3250	2900, 2950, 3250	2900, 2950, 3000, 3250	2900, 2950, 3000, 3250	2900, 2950, 3250	2900, 2950, 3000, 3250	2900, 2950, 3000, 3250	2900, 2950, 3000, 3250	2900, 2950, 3000, 3250	2900, 2950, 3000, 3200, 3250	2900, 2950, 3000, 3250
樓板 (不包括灰泥) 厚度 (毫米) The thickness of the floor slabs (excluding plaster) (mm)		150	150	150	100, 150	150	125, 150, 175	150	150	150	150	150	100, 150

因住宅物業的較高樓層的結構牆的厚度遞減，較高樓層的內部面積，一般比較低樓層的內部面積稍大。(註：此乃根據《一手住宅物業銷售條例》(第621章)附表1第1部第10(2)(e)條所規定的陳述，並不適用於發展項目。)
The internal areas of the residential properties on the upper floors will generally be slightly larger than those on the lower floors because of the reducing thickness of the structural walls on the upper floors. (Note: This statement is required under Section 10(2)(e) in Part 1 of Schedule 1 of the Residential Properties (First-hand Sales) Ordinance (Cap.621) but is not applicable to the Development.)

備註：

1. 樓面平面圖之尺規所列數字為以毫米標示之建築結構尺寸。
2. 每個住宅物業的層與層之間的高度指該樓層之結構地台面與上一層結構地台面之高度距離。
3. 每個住宅物業的樓板的厚度不包括灰泥。
4. 請參閱本售樓說明書第22頁為住宅物業樓面平面圖而設之備註及名詞及簡稱的圖例。

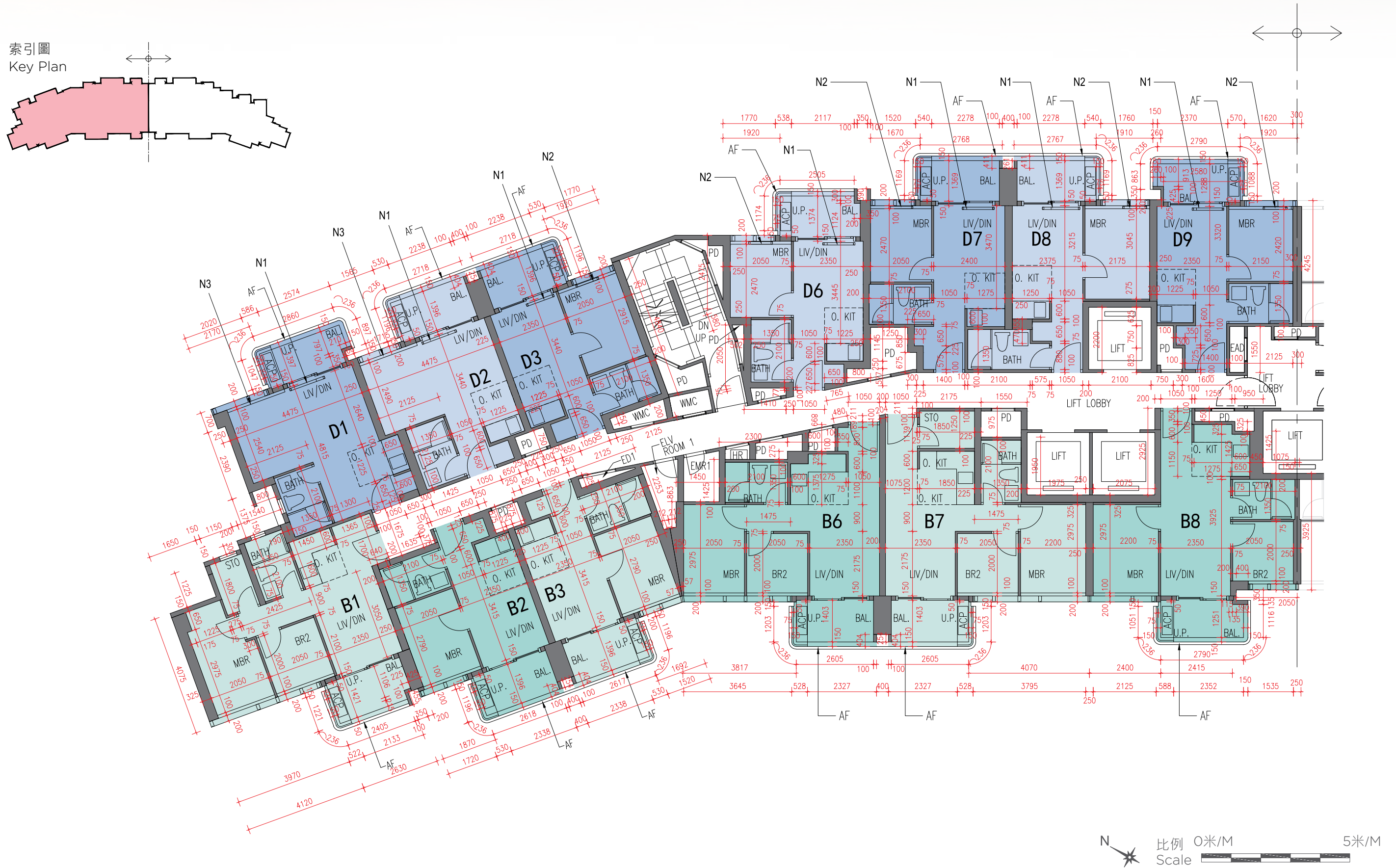
Notes:

1. The dimensions in the floor plans are all structural dimensions in millimetre.
2. The floor-to-floor height refers to the height between the top surface of the structural slab of a floor and the top surface of the structural slab of its immediate upper floor of each residential property.
3. The thickness of the floor slabs excludes plaster of each residential property.
4. Please refer to Page 22 of this sales brochure for legend of the terms and abbreviations in studying the floor plans.

10 發展項目的住宅物業的樓面平面圖 FLOOR PLANS OF RESIDENTIAL PROPERTIES IN THE DEVELOPMENT

8樓平面圖
8/F Plan

索引圖
Key Plan



10 發展項目的住宅物業的樓面平面圖 FLOOR PLANS OF RESIDENTIAL PROPERTIES IN THE DEVELOPMENT

8樓平面圖
8/F Plan



10 發展項目的住宅物業的樓面平面圖 FLOOR PLANS OF RESIDENTIAL PROPERTIES IN THE DEVELOPMENT

每個住宅物業 Each Residential Property	樓層 Floor	單位 Unit												
		B1	B2	B3	B6	B7	B8	D1	D2	D3	D6	D7	D8	D9
層與層之間的高度 (毫米) The floor-to-floor height (mm)	8樓 8/F	2900, 3000, 3050, 3250	2900, 2950, 3250	2900, 2950, 3250	2900, 2950, 3000, 3250	2900, 2950, 3000, 3250	2900, 2950, 3250	2900, 2950, 3250	2850, 2900, 3000, 3250	2900, 2950, 3250	2900, 2950, 3000, 3250	2900, 2950, 3250	2900, 2950, 3000, 3250	2900, 2950, 3000, 3250
樓板 (不包括灰泥) 厚度 (毫米) The thickness of the floor slabs (excluding plaster) (mm)		150	150	150	100, 150	150	125, 150, 175	100, 150	100, 150	150	100, 150	150	100, 150	150

因住宅物業的較高樓層的結構牆的厚度遞減，較高樓層的內部面積，一般比較低樓層的內部面積稍大。(註：此乃根據《一手住宅物業銷售條例》(第621章)附表1第1部第10(2)(e)條所規定的陳述，並不適用於發展項目。)
The internal areas of the residential properties on the upper floors will generally be slightly larger than those on the lower floors because of the reducing thickness of the structural walls on the upper floors. (Note: This statement is required under Section 10(2)(e) in Part 1 of Schedule 1 of the Residential Properties (First-hand Sales) Ordinance (Cap.621) but is not applicable to the Development.)

備註：

- 樓面平面圖之尺規所列數字為以毫米標示之建築結構尺寸。
- 每個住宅物業的層與層之間的高度指該樓層之結構地台面與上一層結構地台面之高度距離。
- 每個住宅物業的樓板的厚度不包括灰泥。
- 請參閱本售樓說明書第22頁為住宅物業樓面平面圖而設之備註及名詞及簡稱的圖例。

Notes:

- The dimensions in the floor plans are all structural dimensions in millimetre.
- The floor-to-floor height refers to the height between the top surface of the structural slab of a floor and the top surface of the structural slab of its immediate upper floor of each residential property.
- The thickness of the floor slabs excludes plaster of each residential property.
- Please refer to Page 22 of this sales brochure for legend of the terms and abbreviations in studying the floor plans.

10 發展項目的住宅物業的樓面平面圖 FLOOR PLANS OF RESIDENTIAL PROPERTIES IN THE DEVELOPMENT

每個住宅物業 Each Residential Property	樓層 Floor	單位 Unit											
		A1	A2	A3	A6	A7	A8	C1	C2	C3	C6	C7	C8
層與層之間的高度 (毫米) The floor-to-floor height (mm)	8樓 8/F	2900, 3000, 3050, 3250	2900, 2950, 3250	2900, 2950, 3250	2900, 2950, 3000, 3250	2900, 2950, 3000, 3250	2900, 2950, 3250	2900, 2950, 3000, 3250	2900, 2950, 3000, 3250	2900, 2950, 3000, 3250	2900, 2950, 3000, 3250	2900, 2950, 3000, 3200, 3250	2900, 2950, 3000, 3250
樓板 (不包括灰泥) 厚度 (毫米) The thickness of the floor slabs (excluding plaster) (mm)		150	150	150	100, 150	150	125, 150, 175	150	150	150	150	150	100, 150

因住宅物業的較高樓層的結構牆的厚度遞減，較高樓層的內部面積，一般比較低樓層的內部面積稍大。(註：此乃根據《一手住宅物業銷售條例》(第621章)附表1第1部第10(2)(e)條所規定的陳述，並不適用於發展項目。)
The internal areas of the residential properties on the upper floors will generally be slightly larger than those on the lower floors because of the reducing thickness of the structural walls on the upper floors. (Note: This statement is required under Section 10(2)(e) in Part 1 of Schedule 1 of the Residential Properties (First-hand Sales) Ordinance (Cap.621) but is not applicable to the Development.)

備註：

- 樓面平面圖之尺規所列數字為以毫米標示之建築結構尺寸。
- 每個住宅物業的層與層之間的高度指該樓層之結構地台面與上一層結構地台面之高度距離。
- 每個住宅物業的樓板的厚度不包括灰泥。
- 請參閱本售樓說明書第22頁為住宅物業樓面平面圖而設之備註及名詞及簡稱的圖例。

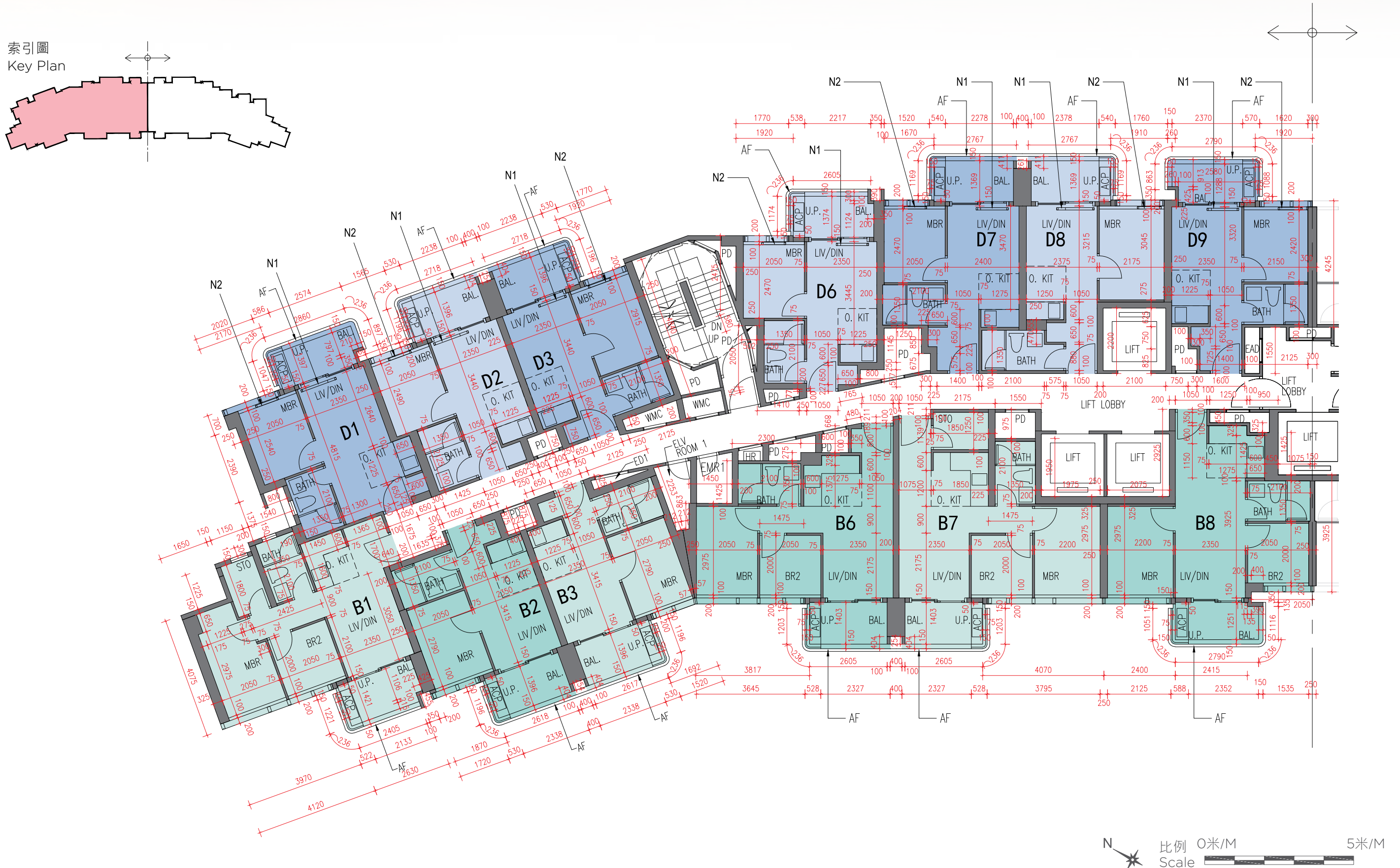
Notes:

- The dimensions in the floor plans are all structural dimensions in millimetre.
- The floor-to-floor height refers to the height between the top surface of the structural slab of a floor and the top surface of the structural slab of its immediate upper floor of each residential property.
- The thickness of the floor slabs excludes plaster of each residential property.
- Please refer to Page 22 of this sales brochure for legend of the terms and abbreviations in studying the floor plans.

10 發展項目的住宅物業的樓面平面圖 FLOOR PLANS OF RESIDENTIAL PROPERTIES IN THE DEVELOPMENT

9樓至12樓、15樓至23樓、25樓至33樓、35樓至37樓 平面圖
 9/F-12/F, 15/F-23/F, 25/F-33/F, 35/F-37/F Plan

索引圖
 Key Plan



10 發展項目的住宅物業的樓面平面圖 FLOOR PLANS OF RESIDENTIAL PROPERTIES IN THE DEVELOPMENT

9樓至12樓、15樓至23樓、25樓至33樓、35樓至37樓 平面圖
9/F-12/F, 15/F-23/F, 25/F-33/F, 35/F-37/F Plan



10 發展項目的住宅物業的樓面平面圖 FLOOR PLANS OF RESIDENTIAL PROPERTIES IN THE DEVELOPMENT

每個住宅物業 Each Residential Property	樓層 Floor	單位 Unit												
		B1	B2	B3	B6	B7	B8	D1	D2	D3	D6	D7	D8	D9
層與層之間的高度 (毫米) The floor-to-floor height (mm)	9樓至12樓、 15樓至23樓、 25樓至33樓、 35樓至36樓 9/F-12/F, 15/F-23/F, 25/F-33/F, 35/F-36/F	3150, 3250, 3300, 3500	3150, 3200, 3500	3150, 3200, 3500	3150, 3200, 3250, 3500	3150, 3200, 3250, 3500	3150, 3200, 3500	3100, 3150, 3250, 3500	3150, 3200, 3500	3150, 3200, 3250, 3500	3150, 3200, 3500	3150, 3200, 3250, 3500	3150, 3200, 3250, 3450, 3500	3150, 3200, 3250, 3500
樓板 (不包括灰泥) 厚度 (毫米) The thickness of the floor slabs (excluding plaster) (mm)		150	150	150	100, 150	150	125, 150, 175	100, 150	100, 150	150	100, 150	150	100, 150	150
層與層之間的高度 (毫米) The floor-to-floor height (mm)	37樓 37/F	3500, 3550	3500, 3550	3500, 3550	3150, 3200, 3450, 3500, 3550	3150, 3200, 3500, 3550	3500, 3550	3100, 3500, 3550	3100, 3500, 3550	3100, 3150, 3200, 3450, 3500, 3550	3150, 3200, 3500	3150, 3200, 3250, 3500	3150, 3200, 3250, 3450, 3500	3150, 3200, 3250, 3500
樓板 (不包括灰泥) 厚度 (毫米) The thickness of the floor slabs (excluding plaster) (mm)		150	150	150	150	150	150	150, 200	150	150, 200	100, 150	150	100, 150	150

因住宅物業的較高樓層的結構牆的厚度遞減，較高樓層的內部面積，一般比較低樓層的內部面積稍大。(註：此乃根據《一手住宅物業銷售條例》(第621章)附表1第1部第10(2)(e)條所規定的陳述，並不適用於發展項目。)
The internal areas of the residential properties on the upper floors will generally be slightly larger than those on the lower floors because of the reducing thickness of the structural walls on the upper floors. (Note: This statement is required under Section 10(2)(e) in Part 1 of Schedule 1 of the Residential Properties (First-hand Sales) Ordinance (Cap.621) but is not applicable to the Development.)

備註：

- 樓面平面圖之尺規所列數字為以毫米標示之建築結構尺寸。
- 每個住宅物業的層與層之間的高度指該樓層之結構地台面與上一層結構地台面之高度距離。
- 每個住宅物業的樓板的厚度不包括灰泥。
- 請參閱本售樓說明書第22頁為住宅物業樓面平面圖而設之備註及名詞及簡稱的圖例。

Notes:

- The dimensions in the floor plans are all structural dimensions in millimetre.
- The floor-to-floor height refers to the height between the top surface of the structural slab of a floor and the top surface of the structural slab of its immediate upper floor of each residential property.
- The thickness of the floor slabs excludes plaster of each residential property.
- Please refer to Page 22 of this sales brochure for legend of the terms and abbreviations in studying the floor plans.

10 發展項目的住宅物業的樓面平面圖 FLOOR PLANS OF RESIDENTIAL PROPERTIES IN THE DEVELOPMENT

每個住宅物業 Each Residential Property	樓層 Floor	單位 Unit											
		A1	A2	A3	A6	A7	A8	C1	C2	C3	C6	C7	C8
層與層之間的高度 (毫米) The floor-to-floor height (mm)	9樓至12樓、 15樓至23樓、 25樓至33樓、 35樓至36樓 9/F-12/F, 15/F-23/F, 25/F-33/F, 35/F-36/F	3150, 3250, 3300, 3500	3150, 3200, 3500	3150, 3200, 3500	3150, 3200, 3250, 3500	3150, 3200, 3250, 3500	3150, 3200, 3500	3150, 3200, 3250, 3500	3150, 3200, 3250, 3500	3150, 3200, 3250, 3500	3150, 3200, 3250, 3500	3150, 3200, 3250, 3450, 3500	3150, 3200, 3250, 3500
樓板 (不包括灰泥) 厚度 (毫米) The thickness of the floor slabs (excluding plaster) (mm)		150	150	150	100, 150	150	125, 150, 175	150	150	150	150	150	100, 150
層與層之間的高度 (毫米) The floor-to-floor height (mm)	37樓 37/F	3500, 3550	3500, 3550	3500, 3550	3150, 3200, 3450, 3500, 3550	3150, 3200, 3500, 3550	3500, 3550	3500, 3550	3450, 3500, 3550	3150, 3200, 3250, 3500	3150, 3200, 3250, 3500	3150, 3200, 3250, 3450, 3500	3150, 3200, 3250, 3500
樓板 (不包括灰泥) 厚度 (毫米) The thickness of the floor slabs (excluding plaster) (mm)		150	150	150	150	150	150	150	150	150	150	150	100, 150

因住宅物業的較高樓層的結構牆的厚度遞減，較高樓層的內部面積，一般比較低樓層的內部面積稍大。(註：此乃根據《一手住宅物業銷售條例》(第621章)附表1第1部第10(2)(e)條所規定的陳述，並不適用於發展項目。)
The internal areas of the residential properties on the upper floors will generally be slightly larger than those on the lower floors because of the reducing thickness of the structural walls on the upper floors. (Note: This statement is required under Section 10(2)(e) in Part 1 of Schedule 1 of the Residential Properties (First-hand Sales) Ordinance (Cap.621) but is not applicable to the Development.)

備註：

- 樓面平面圖之尺規所列數字為以毫米標示之建築結構尺寸。
- 每個住宅物業的層與層之間的高度指該樓層之結構地台面與上一層結構地台面之高度距離。
- 每個住宅物業的樓板的厚度不包括灰泥。
- 請參閱本售樓說明書第22頁為住宅物業樓面平面圖而設之備註及名詞及簡稱的圖例。

Notes:

- The dimensions in the floor plans are all structural dimensions in millimetre.
- The floor-to-floor height refers to the height between the top surface of the structural slab of a floor and the top surface of the structural slab of its immediate upper floor of each residential property.
- The thickness of the floor slabs excludes plaster of each residential property.
- Please refer to Page 22 of this sales brochure for legend of the terms and abbreviations in studying the floor plans.

10 發展項目的住宅物業的樓面平面圖 FLOOR PLANS OF RESIDENTIAL PROPERTIES IN THE DEVELOPMENT

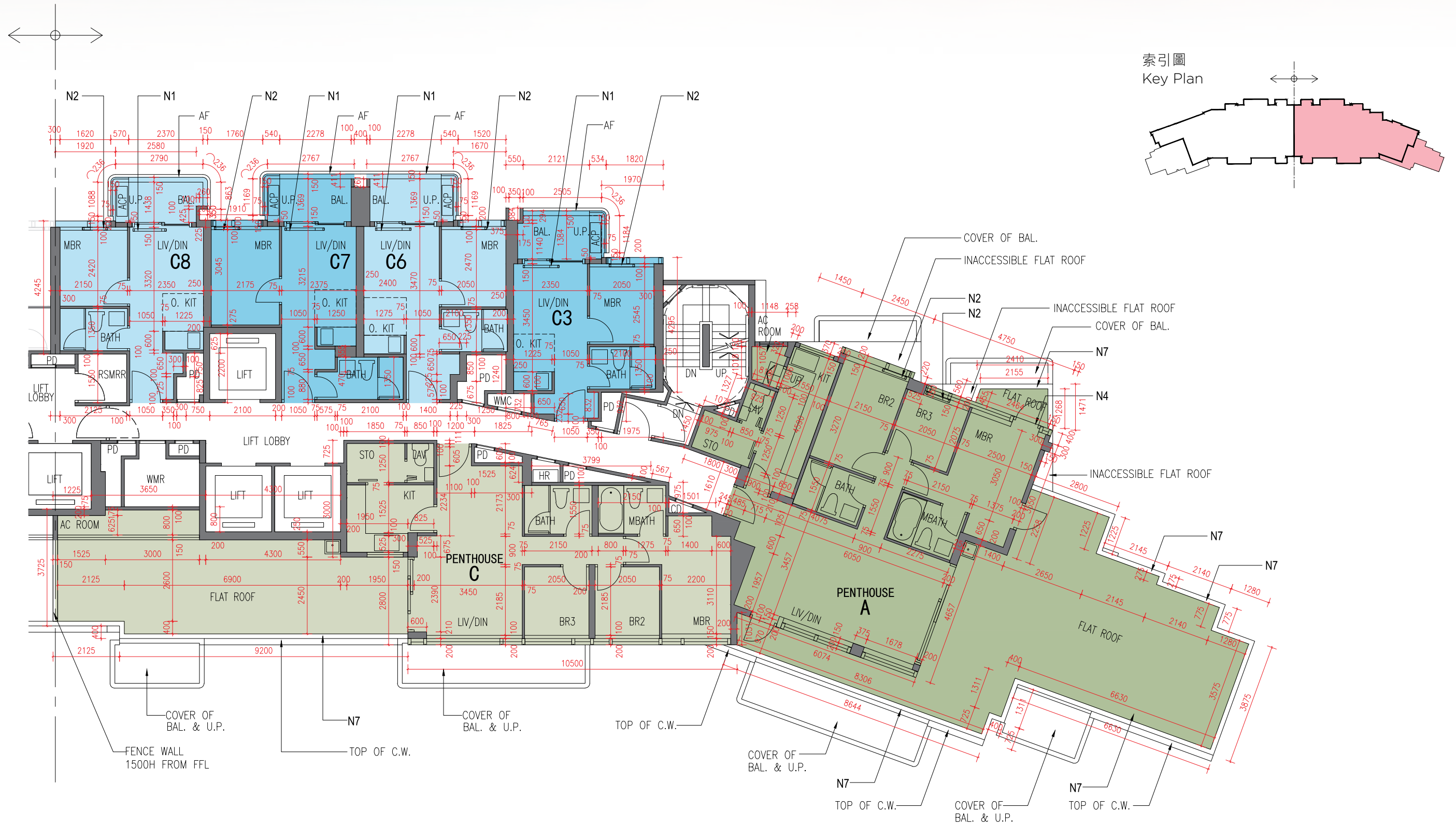
38樓 平面圖
38/F Plan

索引圖
Key Plan



10 發展項目的住宅物業的樓面平面圖 FLOOR PLANS OF RESIDENTIAL PROPERTIES IN THE DEVELOPMENT

38樓 平面圖
38/F Plan



10 發展項目的住宅物業的樓面平面圖 FLOOR PLANS OF RESIDENTIAL PROPERTIES IN THE DEVELOPMENT

每個住宅物業 Each Residential Property	樓層 Floor	單位 Unit					
		頂層單位 B PENTHOUSE B	頂層單位 D PENTHOUSE D	D6	D7	D8	D9
層與層之間的高度 (毫米) The floor-to-floor height (mm)	38樓 38/F	3500, 3550	3500, 3550	3500, 3550	3500, 3550	3500, 3550	3500, 3550
樓板 (不包括灰泥) 厚度 (毫米) The thickness of the floor slabs (excluding plaster) (mm)		200	200	150, 200	150, 200	150, 200	150, 200

因住宅物業的較高樓層的結構牆的厚度遞減，較高樓層的內部面積，一般比較低樓層的內部面積稍大。(註：此乃根據《一手住宅物業銷售條例》(第621章)附表1第1部第10(2)(e)條所規定的陳述，並不適用於發展項目。)
The internal areas of the residential properties on the upper floors will generally be slightly larger than those on the lower floors because of the reducing thickness of the structural walls on the upper floors. (Note: This statement is required under Section 10(2)(e) in Part 1 of Schedule 1 of the Residential Properties (First-hand Sales) Ordinance (Cap.621) but is not applicable to the Development.)

備註：

1. 樓面平面圖之尺規所列數字為以毫米標示之建築結構尺寸。
2. 每個住宅物業的層與層之間的高度指該樓層之結構地台面與上一層結構地台面之高度距離。
3. 每個住宅物業的樓板的厚度不包括灰泥。
4. 請參閱本售樓說明書第22頁為住宅物業樓面平面圖而設之備註及名詞及簡稱的圖例。

Notes:

1. The dimensions in the floor plans are all structural dimensions in millimetre.
2. The floor-to-floor height refers to the height between the top surface of the structural slab of a floor and the top surface of the structural slab of its immediate upper floor of each residential property.
3. The thickness of the floor slabs excludes plaster of each residential property.
4. Please refer to Page 22 of this sales brochure for legend of the terms and abbreviations in studying the floor plans.

10 發展項目的住宅物業的樓面平面圖 FLOOR PLANS OF RESIDENTIAL PROPERTIES IN THE DEVELOPMENT

每個住宅物業 Each Residential Property	樓層 Floor	單位 Unit					
		頂層單位 A PENTHOUSE A	頂層單位 C PENTHOUSE C	C3	C6	C7	C8
層與層之間的高度 (毫米) The floor-to-floor height (mm)	38樓 38/F	3500, 3550	3500, 3550	3500, 3550	3500, 3550	3500, 3550	3500, 3550
樓板 (不包括灰泥) 厚度 (毫米) The thickness of the floor slabs (excluding plaster) (mm)		200	200	150, 200	150, 200	150, 200	150, 200

因住宅物業的較高樓層的結構牆的厚度遞減，較高樓層的內部面積，一般比較低樓層的內部面積稍大。(註：此乃根據《一手住宅物業銷售條例》(第621章)附表1第1部第10(2)(e)條所規定的陳述，並不適用於發展項目。)
The internal areas of the residential properties on the upper floors will generally be slightly larger than those on the lower floors because of the reducing thickness of the structural walls on the upper floors. (Note: This statement is required under Section 10(2)(e) in Part 1 of Schedule 1 of the Residential Properties (First-hand Sales) Ordinance (Cap.621) but is not applicable to the Development.)

備註：

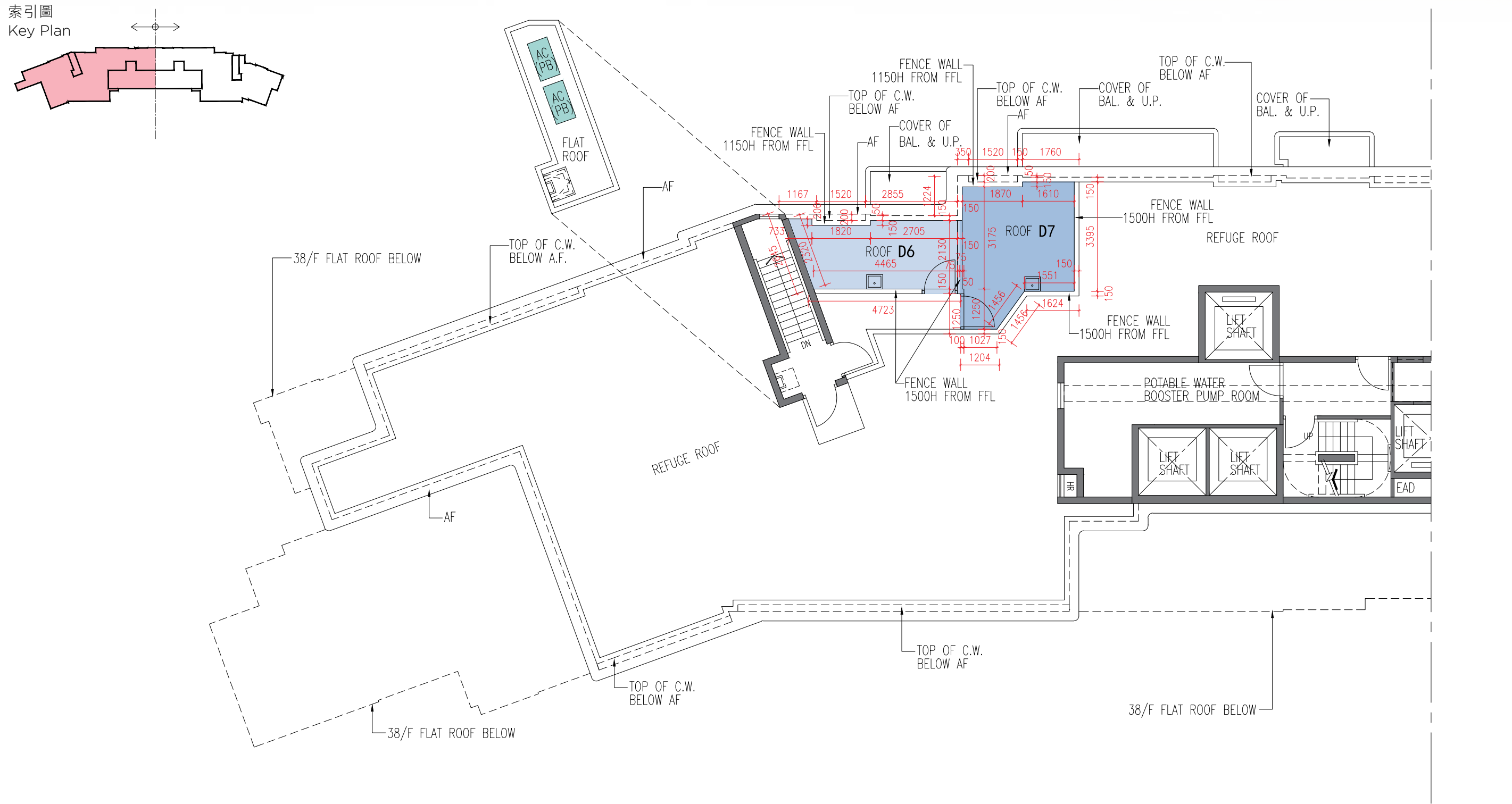
1. 樓面平面圖之尺規所列數字為以毫米標示之建築結構尺寸。
2. 每個住宅物業的層與層之間的高度指該樓層之結構地台面與上一層結構地台面之高度距離。
3. 每個住宅物業的樓板的厚度不包括灰泥。
4. 請參閱本售樓說明書第22頁為住宅物業樓面平面圖而設之備註及名詞及簡稱的圖例。

Notes:

1. The dimensions in the floor plans are all structural dimensions in millimetre.
2. The floor-to-floor height refers to the height between the top surface of the structural slab of a floor and the top surface of the structural slab of its immediate upper floor of each residential property.
3. The thickness of the floor slabs excludes plaster of each residential property.
4. Please refer to Page 22 of this sales brochure for legend of the terms and abbreviations in studying the floor plans.

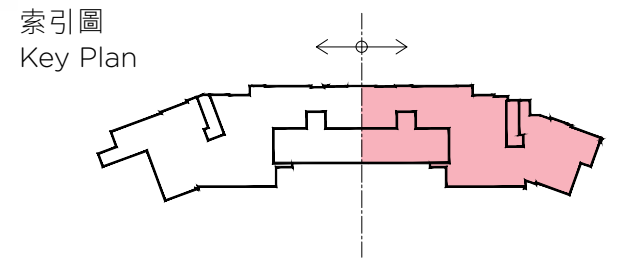
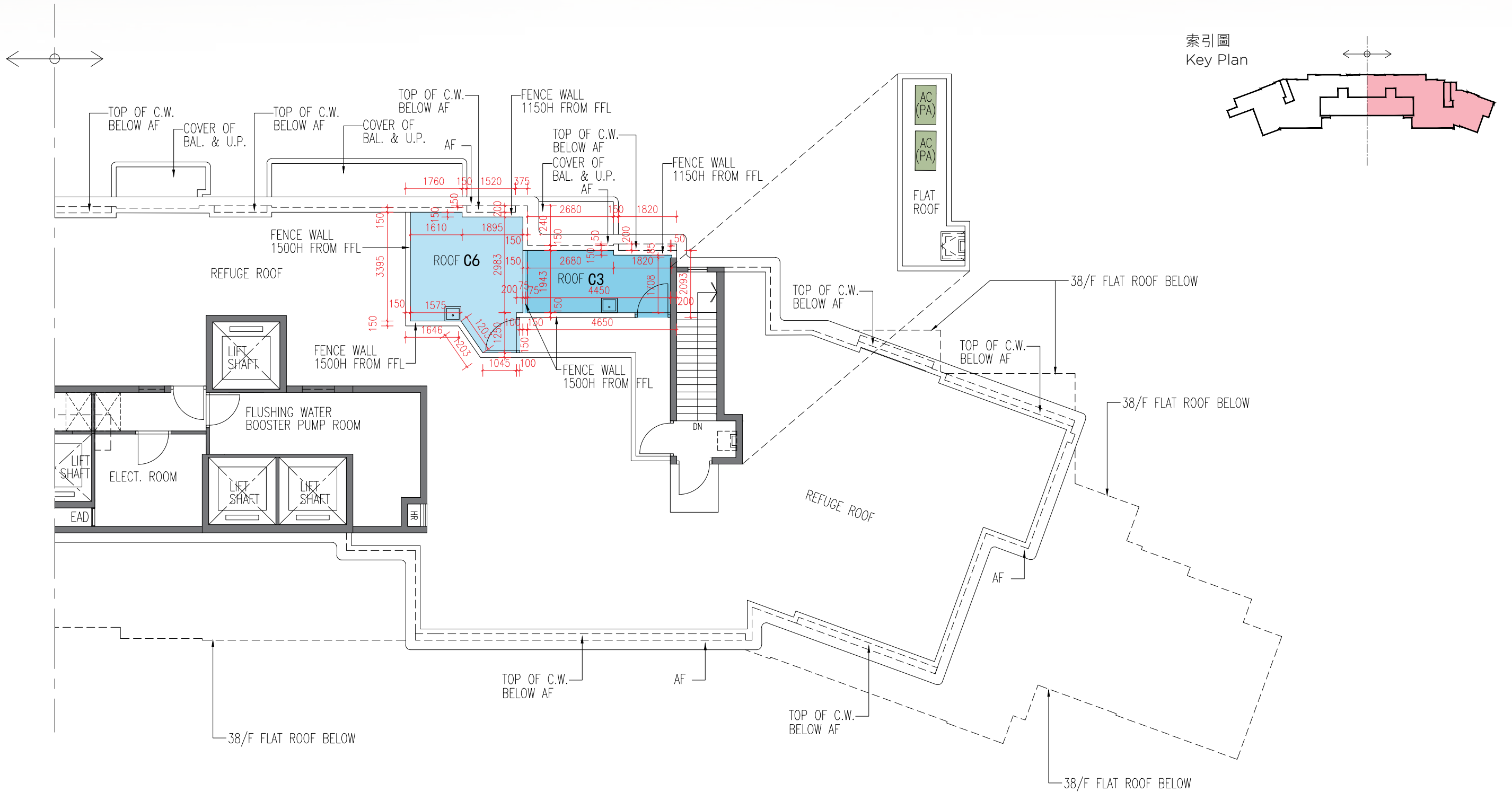
10 發展項目的住宅物業的樓面平面圖 FLOOR PLANS OF RESIDENTIAL PROPERTIES IN THE DEVELOPMENT

天台 平面圖
ROOF Plan



10 發展項目的住宅物業的樓面平面圖 FLOOR PLANS OF RESIDENTIAL PROPERTIES IN THE DEVELOPMENT

天台 平面圖
ROOF Plan



10 發展項目的住宅物業的樓面平面圖 FLOOR PLANS OF RESIDENTIAL PROPERTIES IN THE DEVELOPMENT

每個住宅物業 Each Residential Property	樓層 Floor	單位 Unit			
		C3	C6	D6	D7
層與層之間的高度 (毫米) The floor-to-floor height (mm)	天台 Roof	不適用 N/A			
樓板 (不包括灰泥) 厚度 (毫米) The thickness of the floor slabs (excluding plaster) (mm)		不適用 N/A			

因住宅物業的較高樓層的結構牆的厚度遞減，較高樓層的內部面積，一般比較低樓層的內部面積稍大。(註：此乃根據《一手住宅物業銷售條例》(第621章)附表1第1部第10(2)(e)條所規定的陳述，並不適用於發展項目。)
The internal areas of the residential properties on the upper floors will generally be slightly larger than those on the lower floors because of the reducing thickness of the structural walls on the upper floors. (Note: This statement is required under Section 10(2)(e) in Part 1 of Schedule 1 of the Residential Properties (First-hand Sales) Ordinance (Cap.621) but is not applicable to the Development.)

備註：

1. 樓面平面圖之尺規所列數字為以毫米標示之建築結構尺寸。
2. 每個住宅物業的層與層之間的高度指該樓層之結構地台面與上一層結構地台面之高度距離。
3. 每個住宅物業的樓板的厚度不包括灰泥。
4. 請參閱本售樓說明書第22頁為住宅物業樓面平面圖而設之備註及名詞及簡稱的圖例。

Notes:

1. The dimensions in the floor plans are all structural dimensions in millimetre.
2. The floor-to-floor height refers to the height between the top surface of the structural slab of a floor and the top surface of the structural slab of its immediate upper floor of each residential property.
3. The thickness of the floor slabs excludes plaster of each residential property.
4. Please refer to Page 22 of this sales brochure for legend of the terms and abbreviations in studying the floor plans.