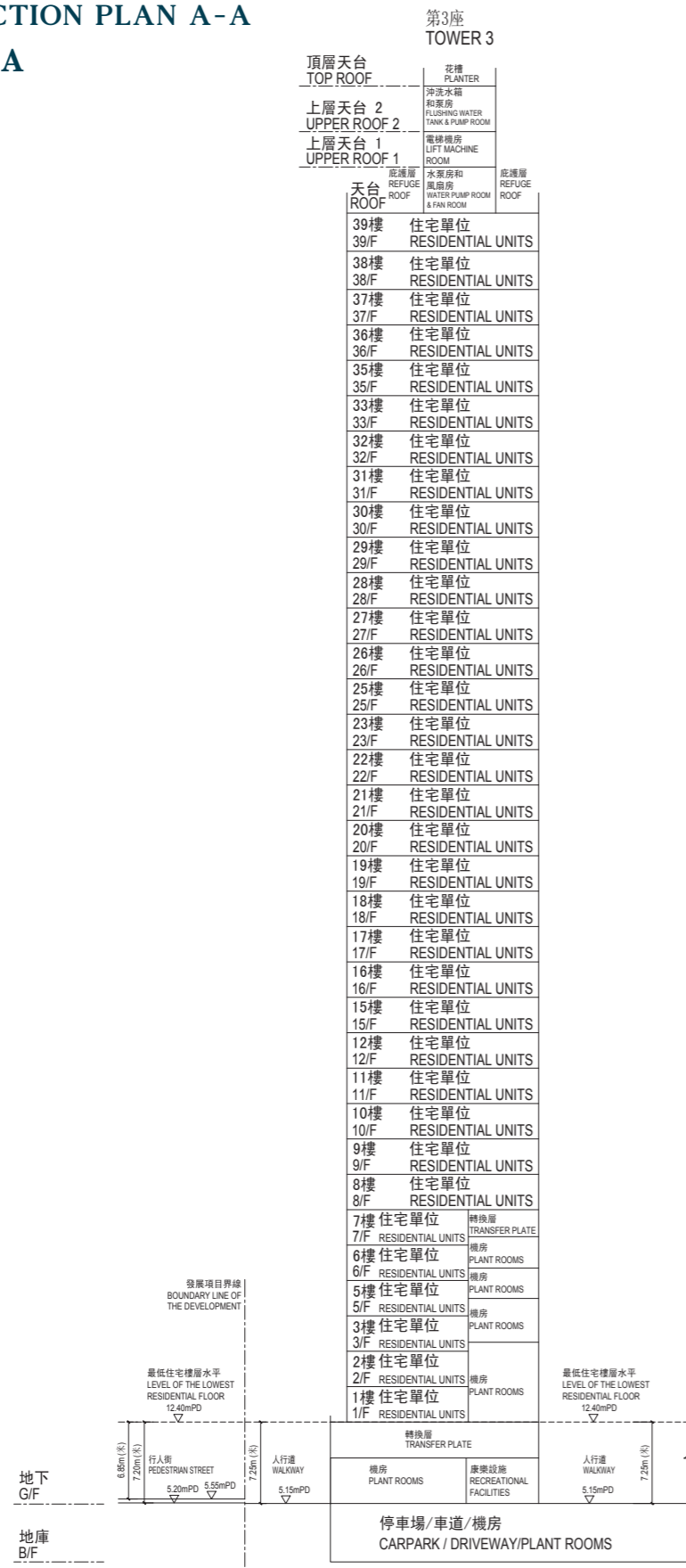


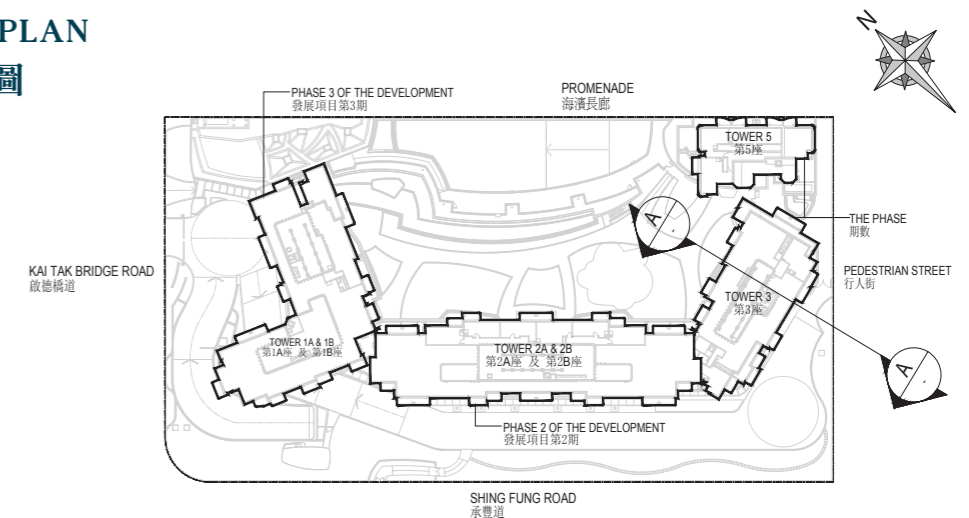
19 CROSS-SECTION PLAN OF BUILDING IN THE PHASE

期數中的建築物的橫截面圖

CROSS-SECTION PLAN A-A
橫截面圖A-A



KEY PLAN
索引圖



Legend 圖例

- ▽ Height in metres above the Hong Kong Principal Datum (HKPD).
香港主水平基準以上高度(米)。
 - Dotted line denotes the level of the lowest residential floor of the building.
虛線為該建築物最低住宅樓層水平。
- Remark : This cross-section plan is not drawn to scale.
備註：此橫截面圖並非按照比例繪畫。

The part of Pedestrian Street adjacent to Tower 3 is 5.20 metres to 5.55 metres above the Hong Kong Principal Datum.
毗連第3座的一段行人街為香港主水平基準以上5.20米至5.55米。

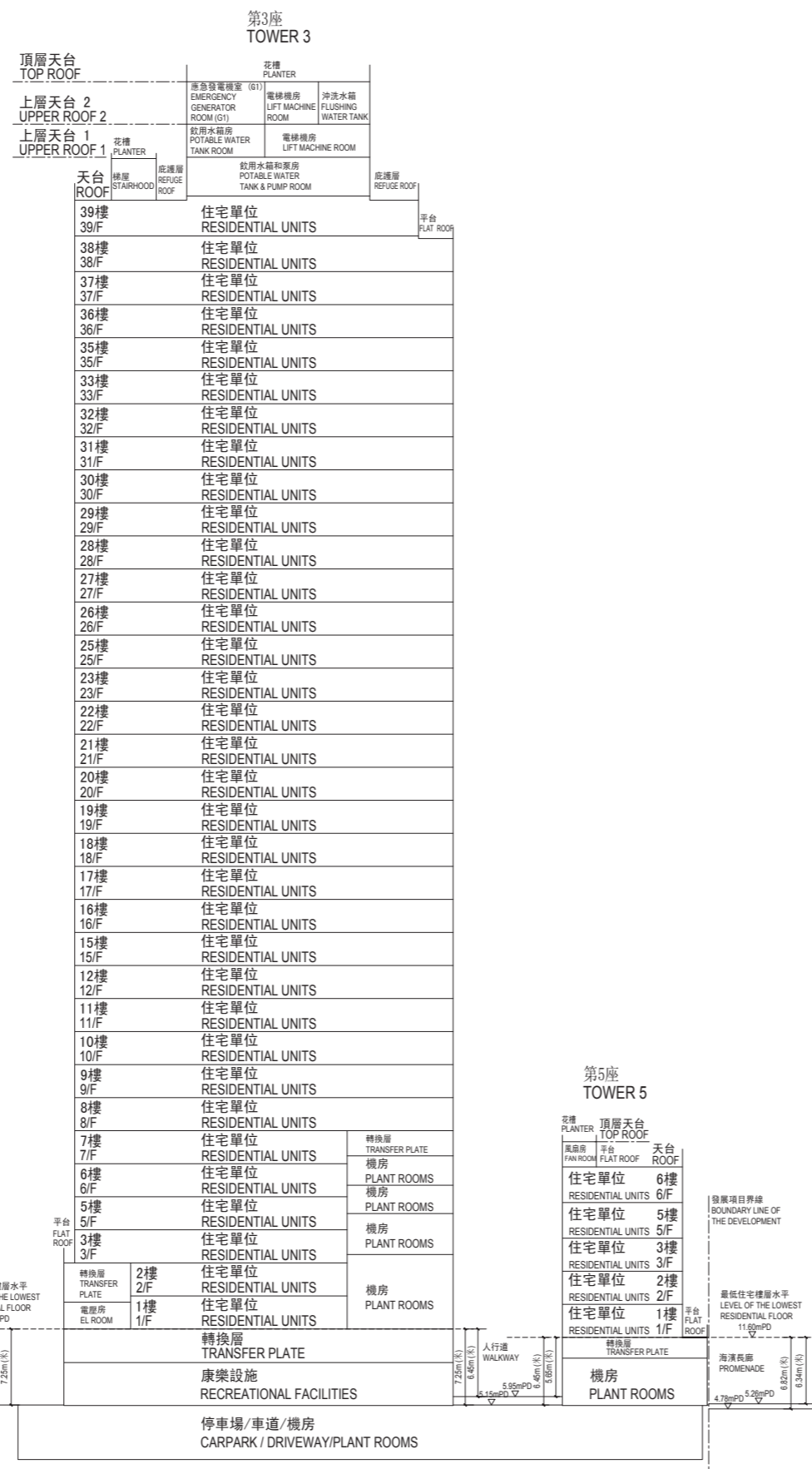
The part of walkway adjacent to Tower 3 is 5.15 metres above the Hong Kong Principal Datum.
毗連第3座的一段人行道為香港主水平基準以上5.15米。

The part of walkway adjacent to Tower 3 is 5.15 metres above the Hong Kong Principal Datum.
毗連第3座的一段人行道為香港主水平基準以上5.15米。

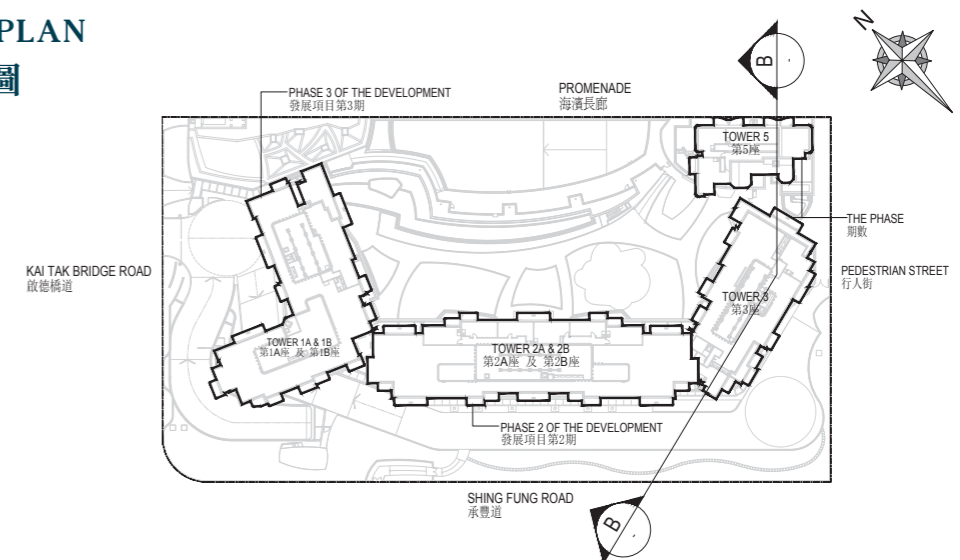
19 CROSS-SECTION PLAN OF BUILDING IN THE PHASE

期數中的建築物的橫截面圖

CROSS-SECTION PLAN B-B
橫截面圖B-B



KEY PLAN
索引圖



Legend 圖例

- ▽ Height in metres above the Hong Kong Principal Datum (HKPD).
香港主水平基準以上高度(米)。
 - Dotted line denotes the level of the lowest residential floor of the building.
虛線為該建築物最低住宅樓層水平。
- Remark : This cross-section plan is not drawn to scale.
備註：此橫截面圖並非按照比例繪畫。

The part of Landscape Deck adjacent to Tower 3 is 13.01 metres to 13.09 metres above the Hong Kong Principal Datum.
毗連第3座的一段園景平台為香港主水平基準以上13.01米至13.09米。

The part of Shing Fung Road adjacent to Tower 3 is 5.04 metres to 5.40 metres above the Hong Kong Principal Datum.
毗連第3座的一段承豐道為香港主水平基準以上5.04米至5.40米。

The part of Emergency Vehicular Access adjacent to Tower 3 is 5.15 metres above the Hong Kong Principal Datum.
毗連第3座的一段緊急車輛通道為香港主水平基準以上5.15米。

The part of Promenade adjacent to Tower 5 is 4.78 metres to 5.26 metres above the Hong Kong Principal Datum.
毗連第5座的一段海濱長廊為香港主水平基準以上4.78米至5.26米。

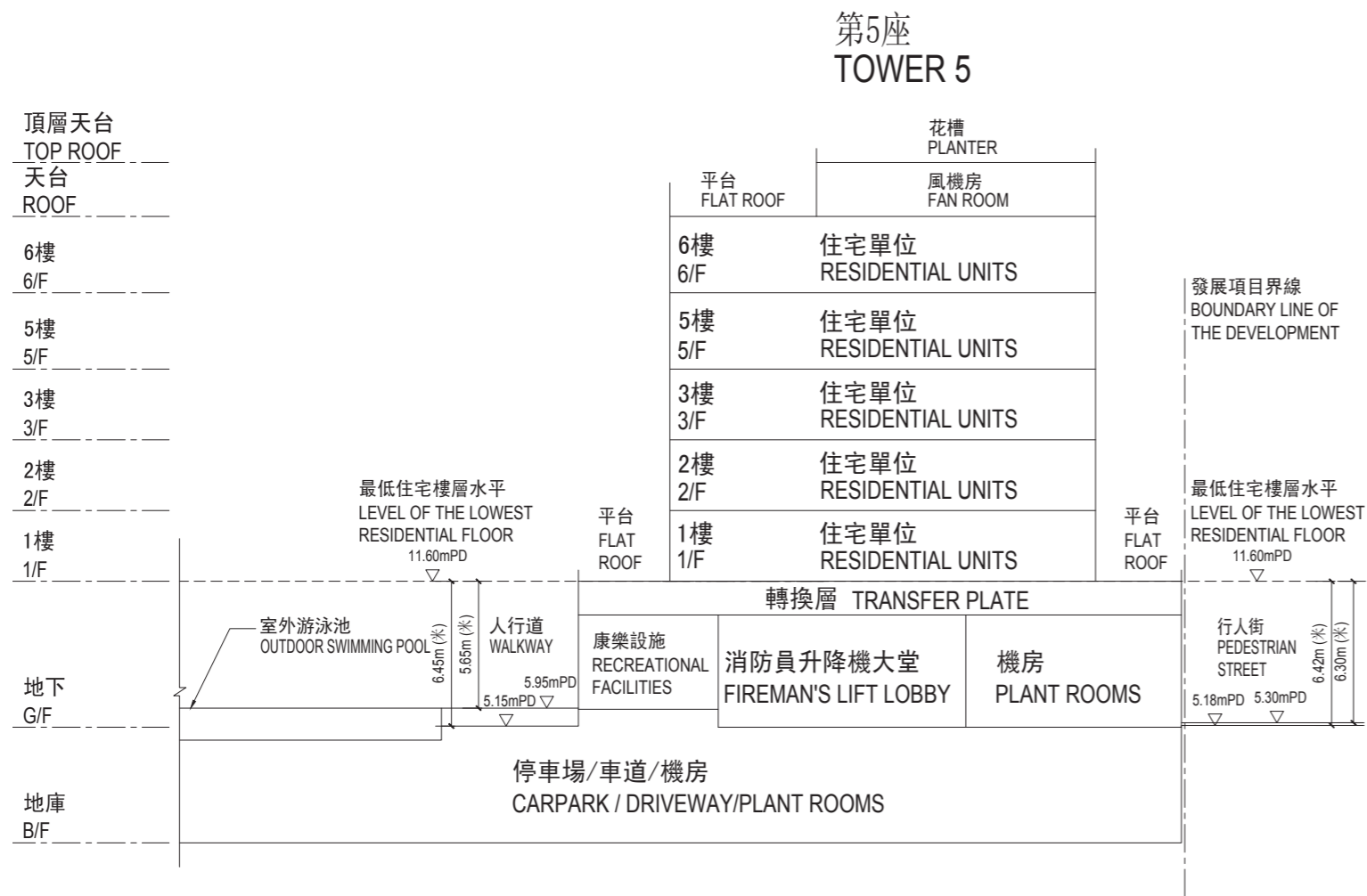
The part of walkway adjacent to Tower 3 and Tower 5 is 5.15 metres to 5.95 metres above the Hong Kong Principal Datum.

毗連第3座及第5座的一段人行道為香港主水平基準以上5.15米至5.95米。

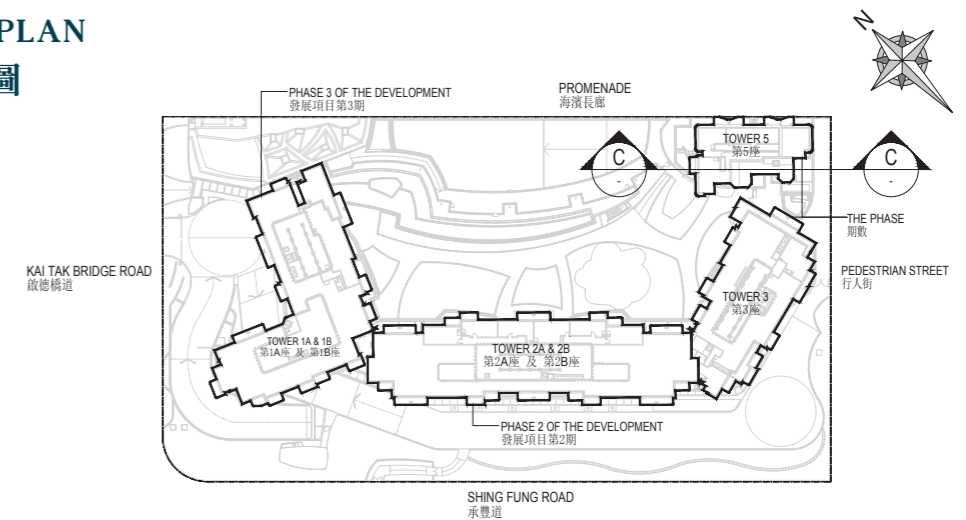
19 CROSS-SECTION PLAN OF BUILDING IN THE PHASE

期數中的建築物的橫截面圖

CROSS-SECTION PLAN C-C
橫截面圖C-C



KEY PLAN
索引圖



Legend 圖例

- ▽ Height in metres above the Hong Kong Principal Datum (HKPD). 香港主水平基準以上高度(米)。
- Dotted line denotes the level of the lowest residential floor of the building. 虛線為該建築物最低住宅樓層水平。

Remark : This cross-section plan is not drawn to scale.

備註：此橫截面圖並非按照比例繪畫。

The part of Pedestrian Street adjacent to Tower 5 is 5.18 metres to 5.30 metres above the Hong Kong Principal Datum. 毗連第5座的一段行人街為香港主水平基準以上5.18米至5.30米。

The part of walkway adjacent to Tower 5 is 5.15 metres to 5.95 metres above the Hong Kong Principal Datum. 毗連第5座的一段人行道為香港主水平基準以上5.15米至5.95米。