

# 11 FLOOR PLANS OF RESIDENTIAL PROPERTIES IN THE PHASE

## 期數的住宅物業的樓面平面圖

### LEGEND 圖例

A/C OUTDOOR UNIT = AIR-CONDITIONING OUTDOOR UNIT = 空調機室外機

A/C P. = AIR-CONDITIONER PLATFORM = 空調機平台

AC PLANT ROOM = AIR-CONDITIONING PLANT ROOM = 空調房

A.D. = AIR DUCT = 氣管道

A.F. = ARCHITECTURAL FEATURE = 建築裝飾

BAL. = BALCONY = 露台

B. = BATHROOM = 浴室

B.1 = BATHROOM 1 = 浴室1

B.2 = BATHROOM 2 = 浴室2

B.R.1 = BEDROOM 1 = 睡房1

B.R.2 = BEDROOM 2 = 睡房2

B.R.3 = BEDROOM 3 = 睡房3

C.W. = CURTAIN WALL = 幕牆

DIN. = DINING ROOM = 飯廳

DN = DOWN = 落

EL.D. = ELECTRIC DUCT = 電氣槽

ELV.D. = EXTRA LOW VOLTAGE DUCT = 特低壓電線槽

EL. ROOM = ELECTRICAL ROOM = 電線房

ELV.ROOM = EXTRA LOW VOLTAGE ROOM = 特低壓電線房

E.M.R. = ELECTRICAL METER ROOM = 電錶房

G.C. = GLASS CLADDING = 玻璃飾面板

H.R. = HOSE REEL = 消防喉轆

KIT. = KITCHEN = 廚房

LAV. = LAVATORY = 洗手間

LIV. = LIVING ROOM = 客廳

M.B. = MASTER BATHROOM = 主人浴室

M.B.R. = MASTER BEDROOM = 主人睡房

OPEN KIT. = OPEN KITCHEN = 開放式廚房

P.D. = PIPE DUCT = 管道

P.W. = PIPE WELL = 管道井

R.R.F. = RESIDENTIAL RECREATIONAL FACILITIES = 住宅康樂設施

R.S. & M.R.R. = REFUSE STORAGE AND MATERIAL RECOVERY ROOM = 垃圾及物料回收室

R.W.P. = RAIN WATER PIPE = 雨水管道槽

STO. = STORE ROOM = 儲物房

T.B.E. ROOM = TELECOMMUNICATIONS AND BROADCASTING ROOM = 電訊及廣播設備機房

U.P. = UTILITY PLATFORM = 工作平台

UTILITY = UTILITY ROOM = 工作間

W.M.C. = WATER METER CABINET = 水錶櫃

W.M.R. = WATER METER ROOM = 水錶房

Notes applicable to the floor plans of this section:

1. There are architectural features, metal grilles and/or exposed pipes on the external walls of some of the floors. For details, please refer to the latest approved building plans.
2. Common pipes exposed and/or enclosed in cladding are located at/adjacent to the balcony and/or utility platform and/or roof and/or flat roof and/or air-conditioner platform and/or external wall of some residential units. For details, please refer to the latest approved building plans and/or approved drainage plans.
3. There are sunken slabs (for mechanical & electrical services of units above) and/or ceiling bulkheads for the air-conditioning fittings and/or mechanical & electrical services at some residential units.
4. Balconies, utility platforms and air-conditioner platforms are non-enclosed areas.
5. The indications of fittings and fitments such as sinks, hobs, toilet bowls, wash basins, bathtubs etc. shown on the floor plans are indications of their approximate locations only and not indications of their actual size, designs and shapes.
6. Some air-conditioner platforms outside the residential unit will be placed with air-conditioning outdoor unit(s) belonging to the unit. The location of these air-conditioning outdoor unit(s) may emit heat and/or sound. The location of air-conditioning outdoor units of the Phase may be revised, subject to the approval of the relevant government authority. For details, please refer to the latest approved building plans.

適用於本章節所有平面圖的備註：

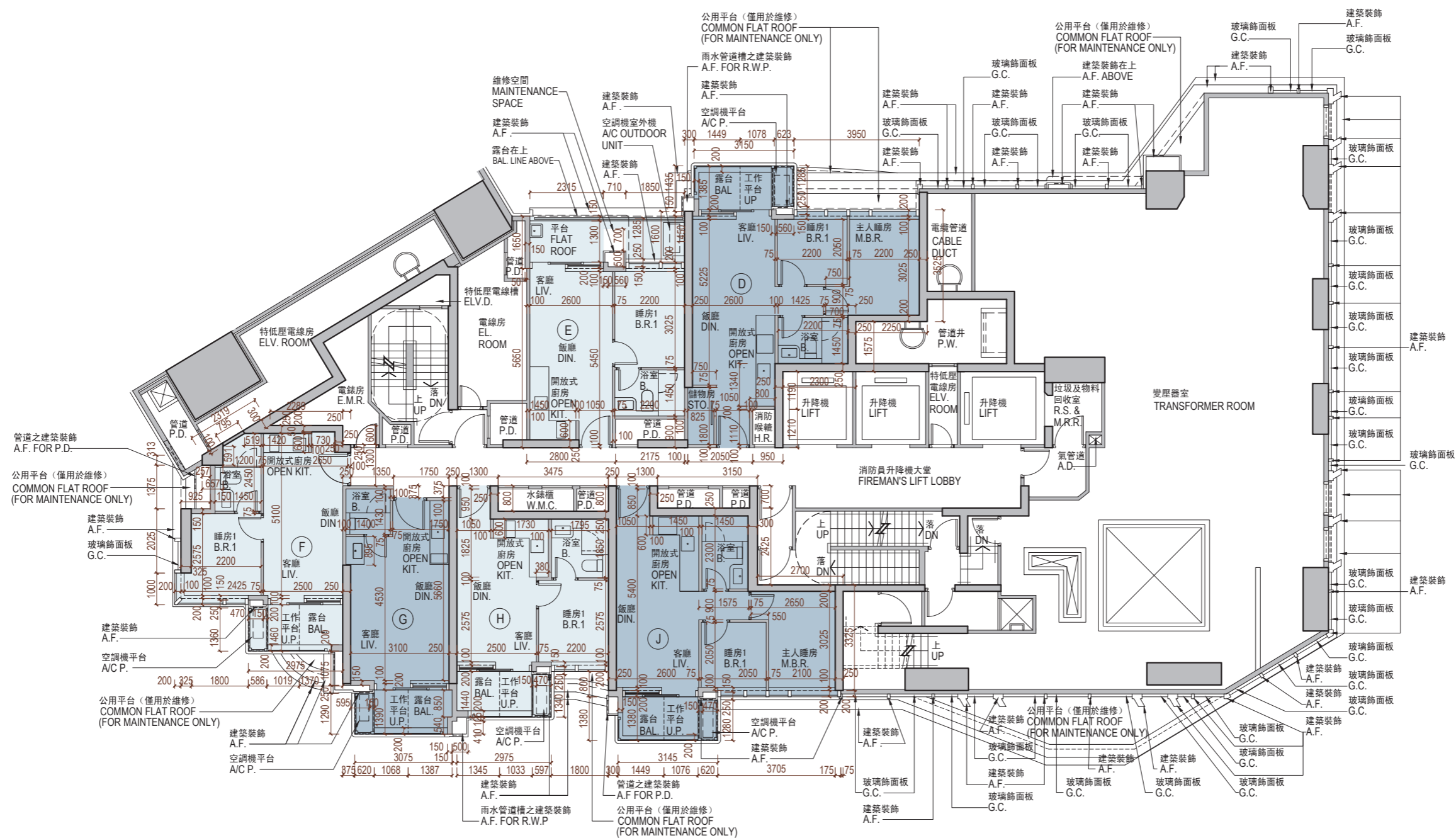
1. 部份樓層外牆設有建築裝飾、金屬格柵及/或外露喉管。詳細資料請參考最新批准的建築圖則。
2. 部份單位的露台及/或工作平台及/或天台及/或平台及/或空調機平台及/或外牆或其鄰近地方設有外露及/或內藏於飾板的公用喉管。詳細資料請參考最新批准的建築圖則及/或排水設施圖。
3. 部分住宅單位天花板有跌級樓板（用以安裝樓上單位之機電設備）及/或天花假陣內裝置空調裝備及/或其他機電設備。
4. 露台、工作平台及空調機平台為不可封閉的地方。
5. 樓面平面圖所示之裝置及設備如洗滌盤、煮食爐、坐廁、面盆、浴缸等只供展示其大約位置而非展示其實際大小、設計及形狀。
6. 部份住宅單位外的空調機平台將會放置該單位的一部或多部空調機室外機。該等空調機室外機的位置可能發出熱力及/或聲音。期數之空調機室外機的位置可能修改，並受制於相關政府部門之批准。詳細資料請參考最新批准的建築圖則。

# 11 FLOOR PLANS OF RESIDENTIAL PROPERTIES IN THE PHASE

## 期數的住宅物業的樓面平面圖

TOWER 3  
第3座

1/F  
1樓



Scale 比例:  
M/米 0 5 10

# 11 FLOOR PLANS OF RESIDENTIAL PROPERTIES IN THE PHASE

## 期數的住宅物業的樓面平面圖

	Tower 座數	Floor 樓層	Flat 單位					
			D	E	F	G	H	J
The thickness of the floor slabs (excluding plaster) of each residential property (mm) 每個住宅物業的樓板(不包括灰泥)的厚度(毫米)	Tower 3 第3座	1/F 1樓	150	150	150	150	150	150
The floor-to-floor height (refers to the height between the top surface of the structural slab of a floor and the top surface of the structural slab of its immediate upper floor) of each residential property (mm) 每個住宅物業的層與層之間的高度(指該樓層之石屎地台面與上一層石屎地台面之高度距離)(毫米)			3150, 3325#, 3425#, 3600#, 3650#	3150, 3325#, 3425#, 3600#, 3650#	3150, 3325#, 3425#, 3600#, 3650#	3150, 3325#, 3425#, 3375#, 3600#, 3650#	3150, 3325#, 3425#, 3600#, 3650#	3150, 3325#, 3425#, 3600#, 3650#

# Inclusive of the sunken depth of the sunken slab on the floor of this floor (500mm)

The internal areas of the residential properties on the upper floors will generally be slightly larger than those on the lower floors because of the reducing thickness of the structural walls on the upper floors. (Note: Not applicable to the Phase)

The dimensions in the floor plans are all structural dimensions in millimetre.

Please refer to the first page of the section "Floor Plans of Residential Properties in the Phase" for legend for the terms and abbreviations shown on the floor plan.

# 包括本層地台跌級樓板之跌級深度 (500毫米)

因住宅物業的較高樓層的結構牆的厚度遞減，較高樓層的內部面積，一般比較低樓層的內部面積稍大。(註：不適用於期數)

樓面平面圖之尺規所列數字為以毫米標示之建築結構尺寸。

樓面平面圖中顯示之名詞及簡稱之圖例請參閱「期數的住宅物業的樓面平面圖」一節的首頁。

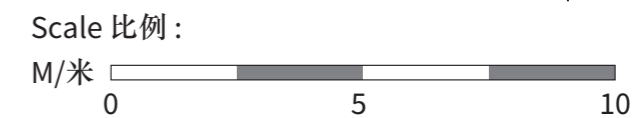
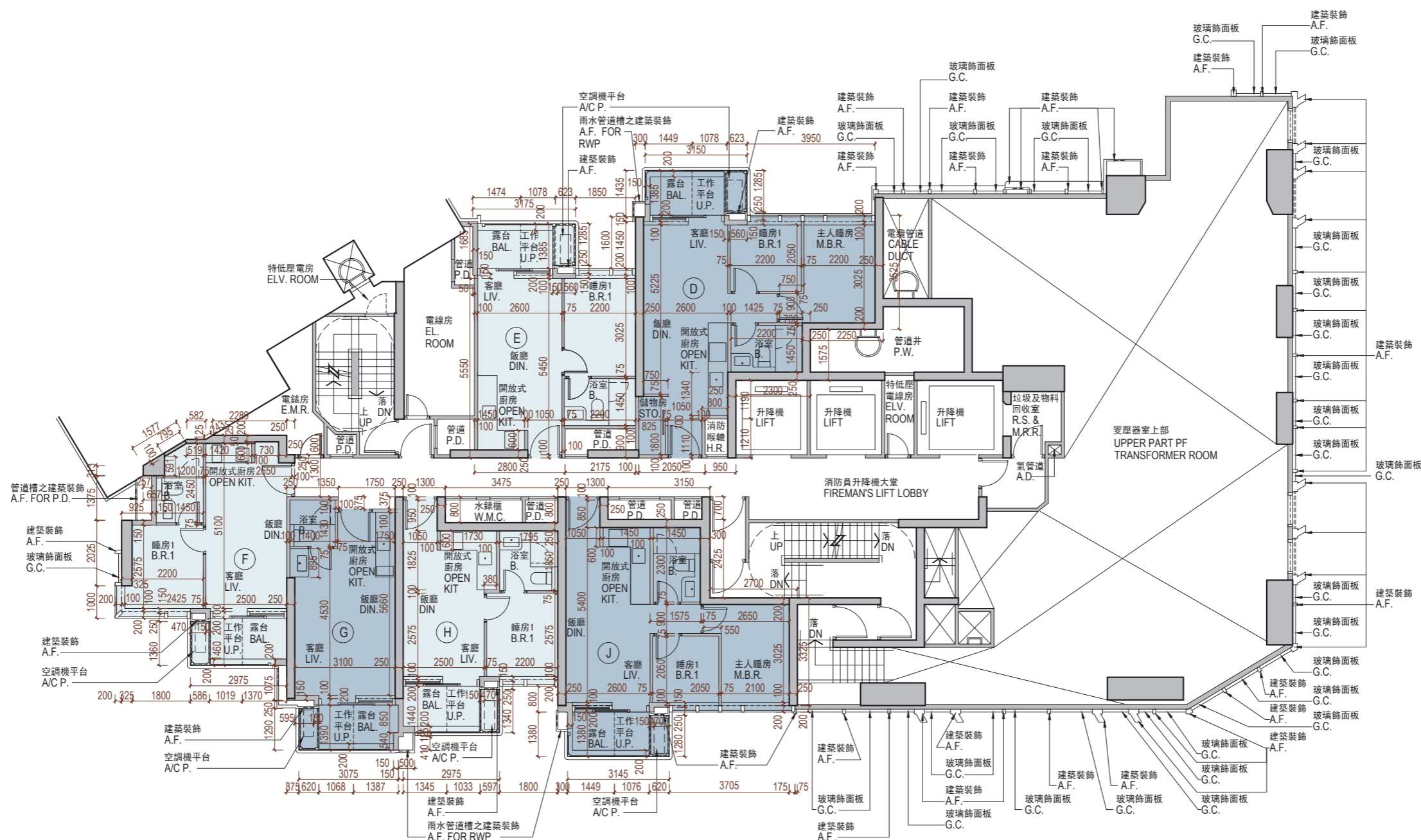


# 11 FLOOR PLANS OF RESIDENTIAL PROPERTIES IN THE PHASE

## 期數的住宅物業的樓面平面圖

TOWER 3  
第3座

2/F  
2樓



# 11 FLOOR PLANS OF RESIDENTIAL PROPERTIES IN THE PHASE

## 期數的住宅物業的樓面平面圖

	Tower 座數	Floor 樓層	Flat 單位					
			D	E	F	G	H	J
The thickness of the floor slabs (excluding plaster) of each residential property (mm) 每個住宅物業的樓板(不包括灰泥)的厚度(毫米)	Tower 3 第3座	2/F 2樓	150	150	150	150	150	150
The floor-to-floor height (refers to the height between the top surface of the structural slab of a floor and the top surface of the structural slab of its immediate upper floor) of each residential property (mm) 每個住宅物業的層與層之間的高度(指該樓層之石屎地台面與上一層石屎地台面之高度距離)(毫米)			3150, 3150 <sup>^</sup> , 3150 <sup>*</sup> , 3150 <sup>**</sup>	3150, 3150 <sup>^</sup> , 3150 <sup>*</sup> , 3150 <sup>**</sup>	3150, 3150 <sup>^</sup> , 3150 <sup>*</sup> , 3150 <sup>**</sup>	3150, 3150 <sup>^</sup> , 3150 <sup>*</sup> , 3150 <sup>**</sup>	3150, 3150 <sup>^</sup> , 3150 <sup>*</sup> , 3150 <sup>**</sup>	3150, 3150 <sup>^</sup> , 3150 <sup>*</sup> , 3150 <sup>**</sup>

<sup>^</sup> inclusive of the sunken depth of the sunken slab on the floor of this floor (50mm)

<sup>\*</sup> inclusive of the sunken depth of the sunken slab on the floor of this floor (225mm)

<sup>^^</sup> inclusive of the sunken depth of the sunken slab on the floor of this floor (275mm)

<sup>\*\*</sup> inclusive of the sunken depth of the sunken slab on the floor of this floor (325mm)

The internal areas of the residential properties on the upper floors will generally be slightly larger than those on the lower floors because of the reducing thickness of the structural walls on the upper floors. (Note: Not applicable to the Phase)

The dimensions in the floor plans are all structural dimensions in millimetre.

Please refer to the first page of the section "Floor Plans of Residential Properties in the Phase" for legend for the terms and abbreviations shown on the floor plan.

<sup>^</sup> 包括本層地台跌級樓板之跌級深度 (50毫米)

<sup>\*</sup> 包括本層地台跌級樓板之跌級深度 (225毫米)

<sup>^^</sup> 包括本層地台跌級樓板之跌級深度 (275毫米)

<sup>\*\*</sup> 包括本層地台跌級樓板之跌級深度 (325毫米)

因住宅物業的較高樓層的結構牆的厚度遞減，較高樓層的內部面積，一般比較低樓層的內部面積稍大。(註：不適用於期數)

樓面平面圖之尺規所列數字為以毫米標示之建築結構尺寸。

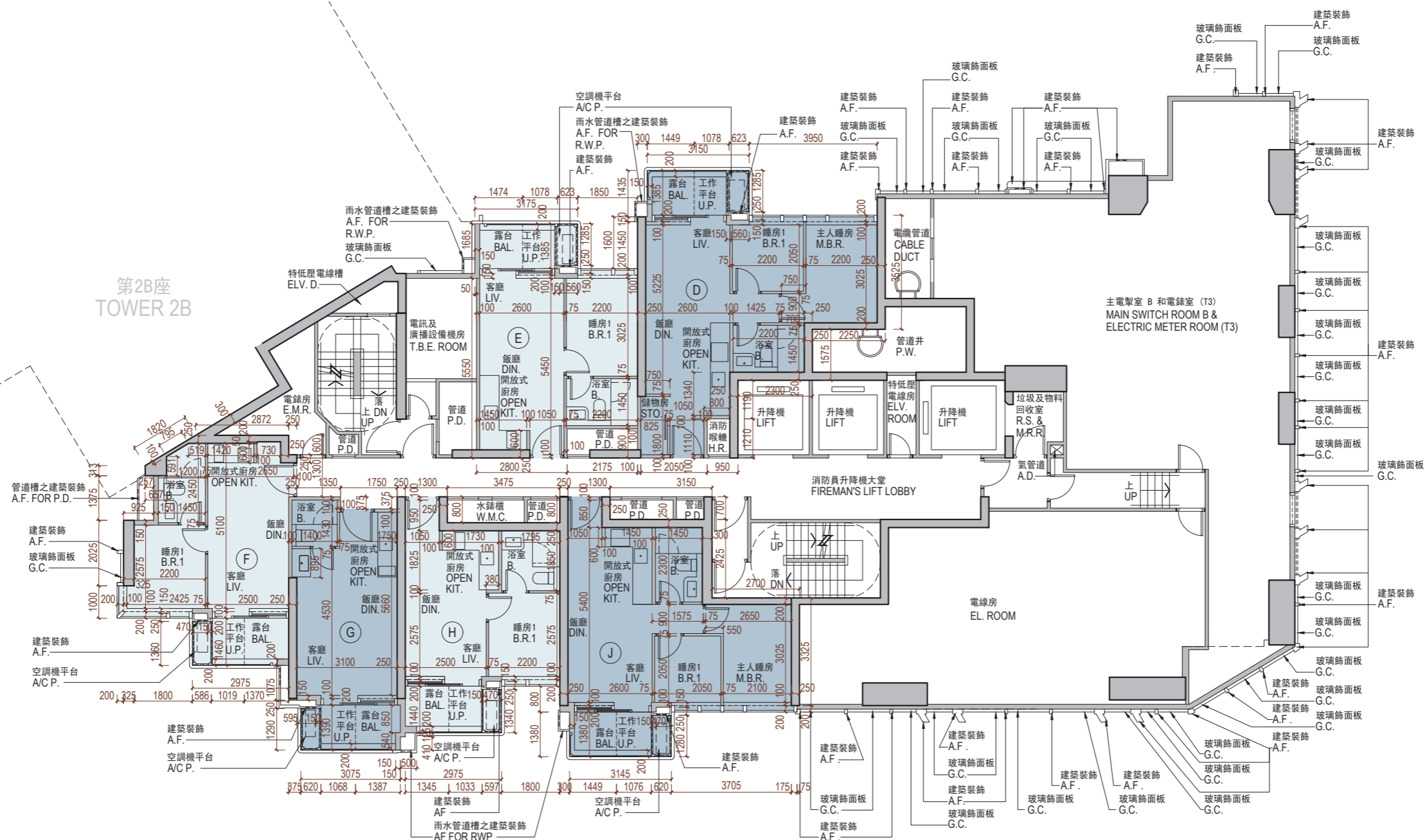
樓面平面圖中顯示之名詞及簡稱之圖例請參閱「期數的住宅物業的樓面平面圖」一節的首頁。

# 11 FLOOR PLANS OF RESIDENTIAL PROPERTIES IN THE PHASE

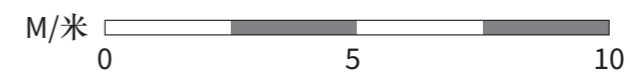
## 期數的住宅物業的樓面平面圖

TOWER 3  
第3座

3/F  
3樓



Scale 比例:





# 11 FLOOR PLANS OF RESIDENTIAL PROPERTIES IN THE PHASE

## 期數的住宅物業的樓面平面圖

	Tower 座數	Floor 樓層	Flat 單位					
			D	E	F	G	H	J
The thickness of the floor slabs (excluding plaster) of each residential property (mm) 每個住宅物業的樓板(不包括灰泥)的厚度(毫米)	Tower 3 第3座	3/F 3樓	150	150	150	150	150	150
The floor-to-floor height (refers to the height between the top surface of the structural slab of a floor and the top surface of the structural slab of its immediate upper floor) of each residential property (mm) 每個住宅物業的層與層之間的高度(指該樓層之石屎地台面與上一層石屎地台面之高度距離)(毫米)			3150, 3150 <sup>^</sup> , 3150 <sup>*</sup> , 3150 <sup>**</sup>	3150, 3150 <sup>^</sup> , 3150 <sup>**</sup> , 3375 <sup>*</sup>	3150, 3150 <sup>^</sup> , 3150 <sup>*</sup> , 3150 <sup>**</sup>	3150, 3150 <sup>^</sup> , 3150 <sup>**</sup> , 3150 <sup>^^</sup>	3150, 3150 <sup>^</sup> , 3150 <sup>*</sup> , 3150 <sup>**</sup>	3150, 3150 <sup>^</sup> , 3150 <sup>*</sup> , 3150 <sup>**</sup>

<sup>^</sup> inclusive of the sunken depth of the sunken slab on the floor of this floor (50mm)

<sup>\*</sup> inclusive of the sunken depth of the sunken slab on the floor of this floor (225mm)

<sup>^^</sup> inclusive of the sunken depth of the sunken slab on the floor of this floor (275mm)

<sup>\*\*</sup> inclusive of the sunken depth of the sunken slab on the floor of this floor (325mm)

The internal areas of the residential properties on the upper floors will generally be slightly larger than those on the lower floors because of the reducing thickness of the structural walls on the upper floors. (Note: Not applicable to the Phase)

The dimensions in the floor plans are all structural dimensions in millimetre.

Please refer to the first page of the section "Floor Plans of Residential Properties in the Phase" for legend for the terms and abbreviations shown on the floor plan.

<sup>^</sup> 包括本層地台跌級樓板之跌級深度 (50毫米)

<sup>\*</sup> 包括本層地台跌級樓板之跌級深度 (225毫米)

<sup>^^</sup> 包括本層地台跌級樓板之跌級深度 (275毫米)

<sup>\*\*</sup> 包括本層地台跌級樓板之跌級深度 (325毫米)

因住宅物業的較高樓層的結構牆的厚度遞減，較高樓層的內部面積，一般比較低樓層的內部面積稍大。(註：不適用於期數)

樓面平面圖之尺規所列數字為以毫米標示之建築結構尺寸。

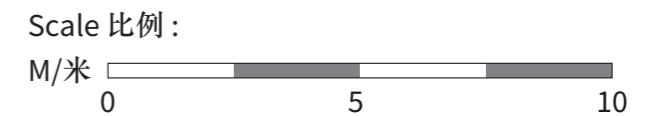
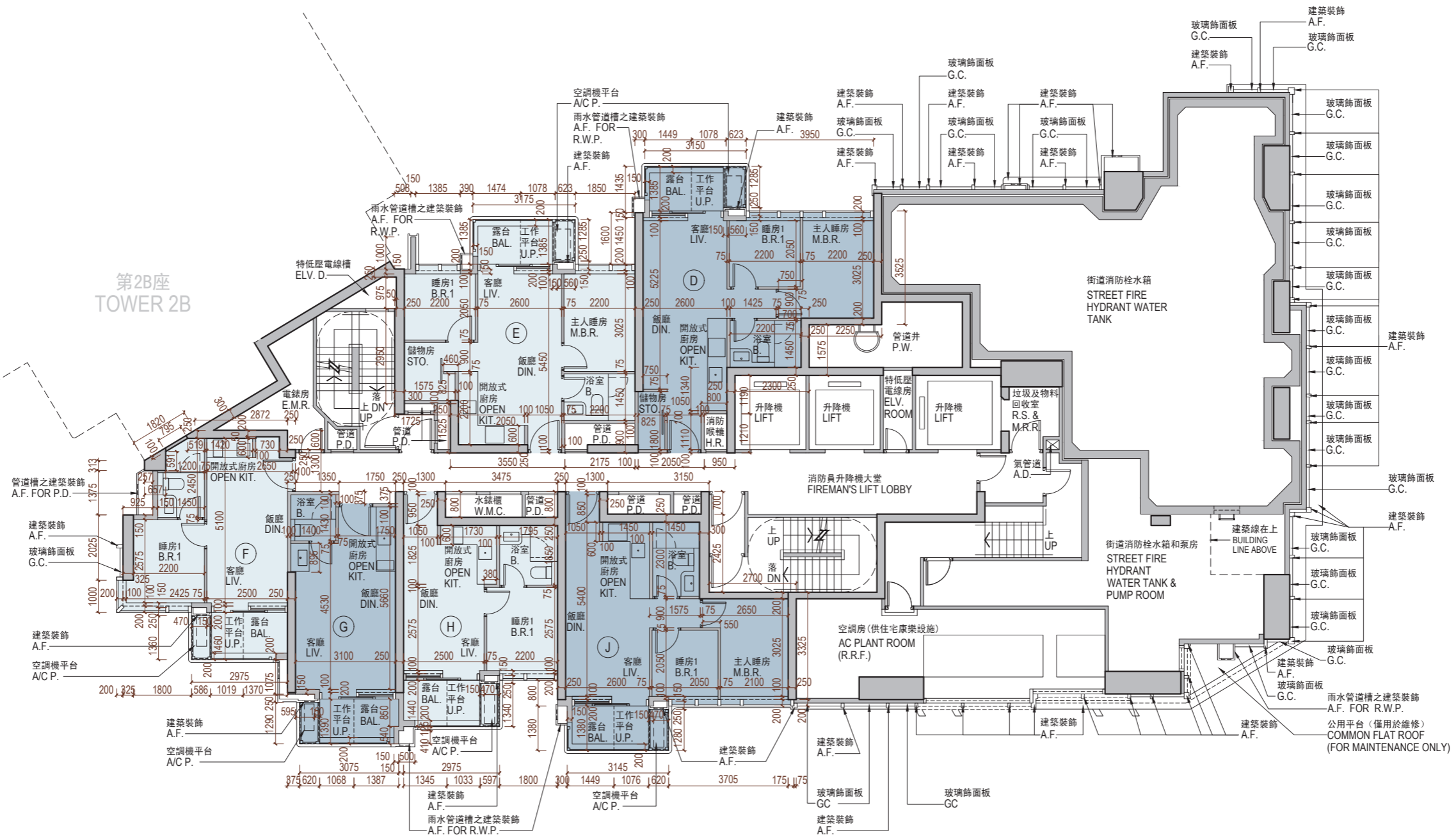
樓面平面圖中顯示之名詞及簡稱之圖例請參閱「期數的住宅物業的樓面平面圖」一節的首頁。

# 11 FLOOR PLANS OF RESIDENTIAL PROPERTIES IN THE PHASE

## 期數的住宅物業的樓面平面圖

TOWER 3  
第3座

5/F  
5樓





# 11 FLOOR PLANS OF RESIDENTIAL PROPERTIES IN THE PHASE

## 期數的住宅物業的樓面平面圖

	Tower 座數	Floor 樓層	Flat 單位					
			D	E	F	G	H	J
The thickness of the floor slabs (excluding plaster) of each residential property (mm) 每個住宅物業的樓板(不包括灰泥)的厚度(毫米)	Tower 3 第3座	5/F 5樓	150	150	150	150	150	150
The floor-to-floor height (refers to the height between the top surface of the structural slab of a floor and the top surface of the structural slab of its immediate upper floor) of each residential property (mm) 每個住宅物業的層與層之間的高度(指該樓層之石屎地台面與上一層石屎地台面之高度距離)(毫米)			3150, 3150^, 3150*, 3150**	3150, 3150^, 3150**, 3150^^	3150, 3150^, 3150*, 3150**	3150, 3150^, 3150**, 3150^^	3150, 3150^, 3150*, 3150**	3150, 3150^, 3150*, 3150**

- ^ inclusive of the sunken depth of the sunken slab on the floor of this floor (50mm)
- \* inclusive of the sunken depth of the sunken slab on the floor of this floor (225mm)
- ^^ inclusive of the sunken depth of the sunken slab on the floor of this floor (275mm)
- \*\* inclusive of the sunken depth of the sunken slab on the floor of this floor (325mm)

The internal areas of the residential properties on the upper floors will generally be slightly larger than those on the lower floors because of the reducing thickness of the structural walls on the upper floors. (Note: Not applicable to the Phase)

The dimensions in the floor plans are all structural dimensions in millimetre.

Please refer to the first page of the section "Floor Plans of Residential Properties in the Phase" for legend for the terms and abbreviations shown on the floor plan.

- ^ 包括本層地台跌級樓板之跌級深度 (50毫米)
- \* 包括本層地台跌級樓板之跌級深度 (225毫米)
- ^^ 包括本層地台跌級樓板之跌級深度 (275毫米)
- \*\* 包括本層地台跌級樓板之跌級深度 (325毫米)

因住宅物業的較高樓層的結構牆的厚度遞減，較高樓層的內部面積，一般比較低樓層的內部面積稍大。(註：不適用於期數)

樓面平面圖之尺規所列數字為以毫米標示之建築結構尺寸。

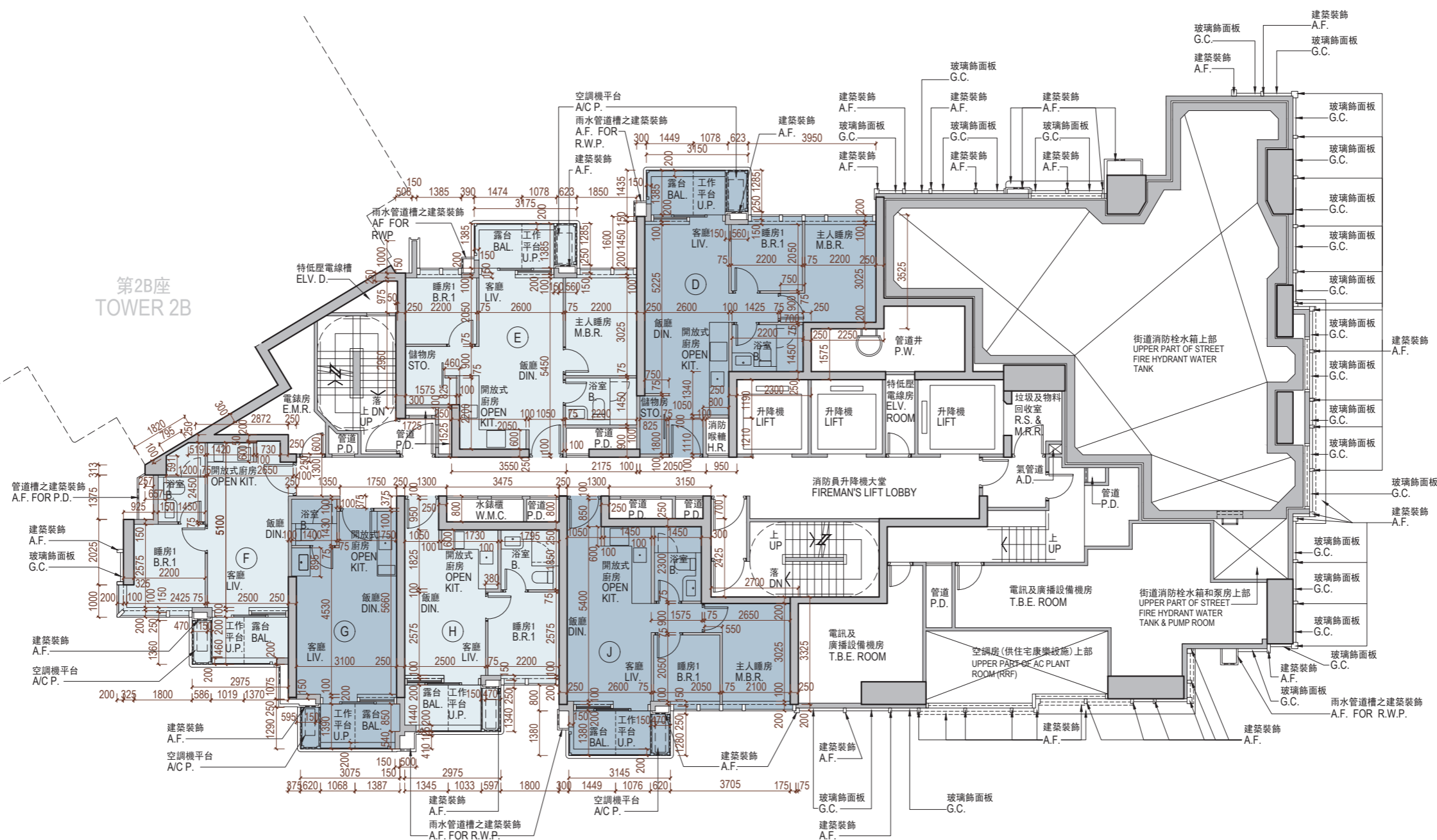
樓面平面圖中顯示之名詞及簡稱之圖例請參閱「期數的住宅物業的樓面平面圖」一節的首頁。

# 11 FLOOR PLANS OF RESIDENTIAL PROPERTIES IN THE PHASE

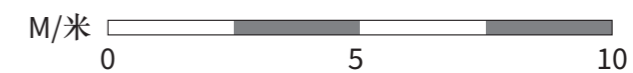
## 期數的住宅物業的樓面平面圖

TOWER 3  
第3座

6/F  
6樓



Scale 比例:



# 11 FLOOR PLANS OF RESIDENTIAL PROPERTIES IN THE PHASE

## 期數的住宅物業的樓面平面圖

	Tower 座數	Floor 樓層	Flat 單位					
			D	E	F	G	H	J
The thickness of the floor slabs (excluding plaster) of each residential property (mm) 每個住宅物業的樓板(不包括灰泥)的厚度(毫米)	Tower 3 第3座	6/F 6樓	150	150	150	150	150	150
The floor-to-floor height (refers to the height between the top surface of the structural slab of a floor and the top surface of the structural slab of its immediate upper floor) of each residential property (mm) 每個住宅物業的層與層之間的高度(指該樓層之石屎地台面與上一層石屎地台面之高度距離)(毫米)			3150, 3150 <sup>^</sup> , 3150 <sup>*</sup> , 3150 <sup>**</sup>	3150, 3150 <sup>^</sup> , 3150 <sup>**</sup> , 3150 <sup>^^</sup>	3150, 3150 <sup>^</sup> , 3150 <sup>*</sup> , 3150 <sup>**</sup>	3150, 3150 <sup>^</sup> , 3150 <sup>**</sup> , 3150 <sup>^^</sup>	3150, 3150 <sup>^</sup> , 3150 <sup>*</sup> , 3150 <sup>**</sup>	3150, 3150 <sup>^</sup> , 3150 <sup>*</sup> , 3150 <sup>**</sup>

<sup>^</sup> inclusive of the sunken depth of the sunken slab on the floor of this floor (50mm)

<sup>\*</sup> inclusive of the sunken depth of the sunken slab on the floor of this floor (225mm)

<sup>^^</sup> inclusive of the sunken depth of the sunken slab on the floor of this floor (275mm)

<sup>\*\*</sup> inclusive of the sunken depth of the sunken slab on the floor of this floor (325mm)

The internal areas of the residential properties on the upper floors will generally be slightly larger than those on the lower floors because of the reducing thickness of the structural walls on the upper floors. (Note: Not applicable to the Phase)

The dimensions in the floor plans are all structural dimensions in millimetre.

Please refer to the first page of the section "Floor Plans of Residential Properties in the Phase" for legend for the terms and abbreviations shown on the floor plan.

<sup>^</sup> 包括本層地台跌級樓板之跌級深度 (50毫米)

<sup>\*</sup> 包括本層地台跌級樓板之跌級深度 (225毫米)

<sup>^^</sup> 包括本層地台跌級樓板之跌級深度 (275毫米)

<sup>\*\*</sup> 包括本層地台跌級樓板之跌級深度 (325毫米)

因住宅物業的較高樓層的結構牆的厚度遞減，較高樓層的內部面積，一般比較低樓層的內部面積稍大。(註：不適用於期數)

樓面平面圖之尺規所列數字為以毫米標示之建築結構尺寸。

樓面平面圖中顯示之名詞及簡稱之圖例請參閱「期數的住宅物業的樓面平面圖」一節的首頁。

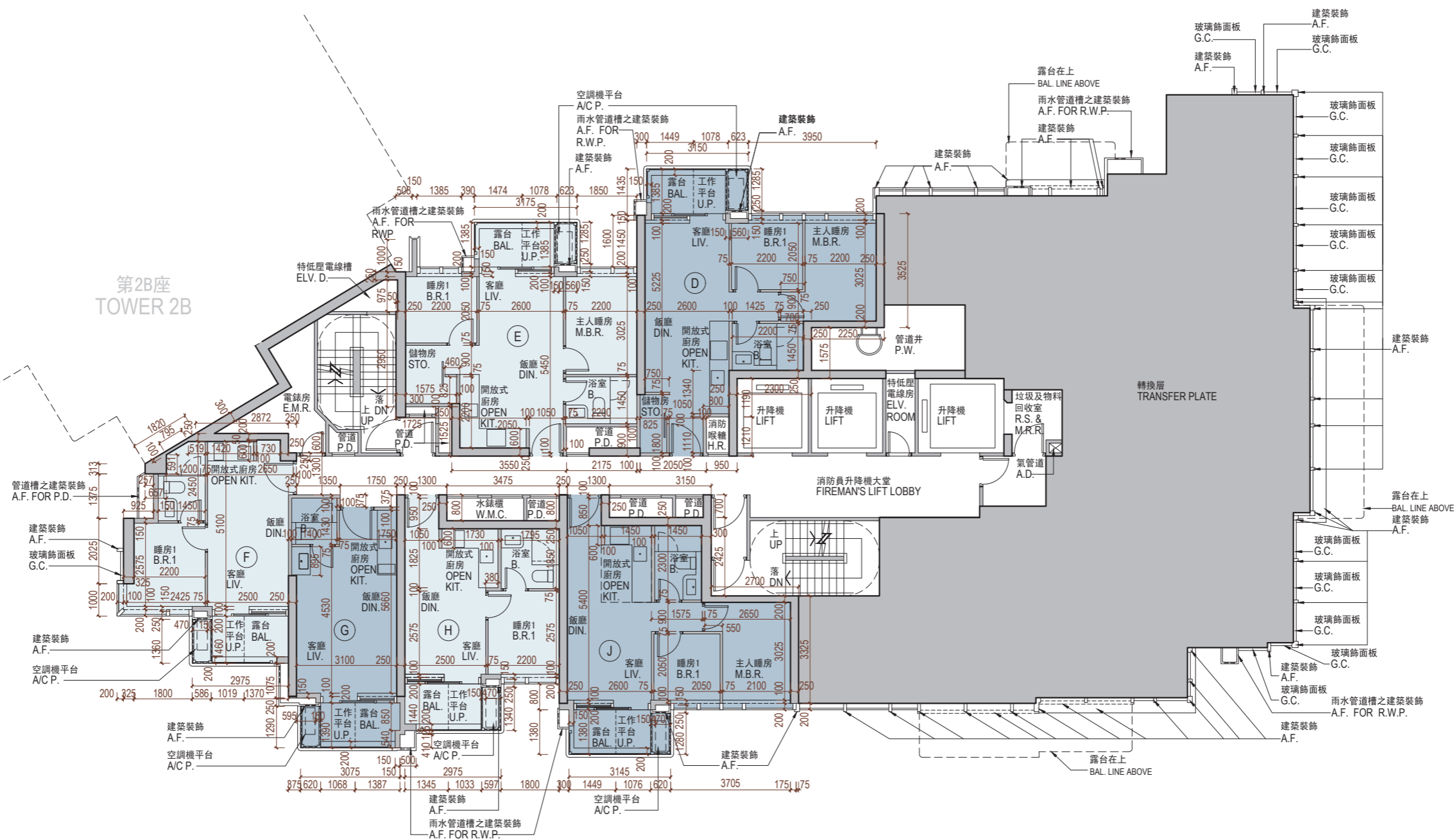


# 11 FLOOR PLANS OF RESIDENTIAL PROPERTIES IN THE PHASE

## 期數的住宅物業的樓面平面圖

TOWER 3  
第3座

7/F  
7樓



Scale 比例：  
M/米 0 5 10

# 11 FLOOR PLANS OF RESIDENTIAL PROPERTIES IN THE PHASE

## 期數的住宅物業的樓面平面圖

	Tower 座數	Floor 樓層	Flat 單位					
			D	E	F	G	H	J
The thickness of the floor slabs (excluding plaster) of each residential property (mm) 每個住宅物業的樓板(不包括灰泥)的厚度(毫米)	Tower 3 第3座	7/F 7樓	150	150	150	150	150	150
The floor-to-floor height (refers to the height between the top surface of the structural slab of a floor and the top surface of the structural slab of its immediate upper floor) of each residential property (mm) 每個住宅物業的層與層之間的高度(指該樓層之石屎地台面與上一層石屎地台面之高度距離)(毫米)			3150, 3150 <sup>^</sup> , 3150 <sup>*</sup> , 3150 <sup>**</sup>	3150, 3150 <sup>^</sup> , 3150 <sup>**</sup> , 3150 <sup>^^</sup>	3150, 3150 <sup>^</sup> , 3150 <sup>*</sup> , 3150 <sup>**</sup>	3150, 3150 <sup>^</sup> , 3150 <sup>**</sup> , 3150 <sup>^^</sup>	3150, 3150 <sup>^</sup> , 3150 <sup>*</sup> , 3150 <sup>**</sup>	3150, 3150 <sup>^</sup> , 3150 <sup>*</sup> , 3150 <sup>**</sup>

- <sup>^</sup> inclusive of the sunken depth of the sunken slab on the floor of this floor (50mm)
- <sup>\*</sup> inclusive of the sunken depth of the sunken slab on the floor of this floor (225mm)
- <sup>^^</sup> inclusive of the sunken depth of the sunken slab on the floor of this floor (275mm)
- <sup>\*\*</sup> inclusive of the sunken depth of the sunken slab on the floor of this floor (325mm)

The internal areas of the residential properties on the upper floors will generally be slightly larger than those on the lower floors because of the reducing thickness of the structural walls on the upper floors. (Note: Not applicable to the Phase)

The dimensions in the floor plans are all structural dimensions in millimetre.

Please refer to the first page of the section "Floor Plans of Residential Properties in the Phase" for legend for the terms and abbreviations shown on the floor plan.

- <sup>^</sup> 包括本層地台跌級樓板之跌級深度 (50毫米)
- <sup>\*</sup> 包括本層地台跌級樓板之跌級深度 (225毫米)
- <sup>^^</sup> 包括本層地台跌級樓板之跌級深度 (275毫米)
- <sup>\*\*</sup> 包括本層地台跌級樓板之跌級深度 (325毫米)

因住宅物業的較高樓層的結構牆的厚度遞減，較高樓層的內部面積，一般比較低樓層的內部面積稍大。(註：不適用於期數)

樓面平面圖之尺規所列數字為以毫米標示之建築結構尺寸。

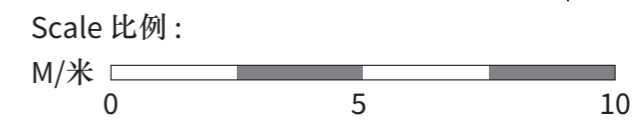
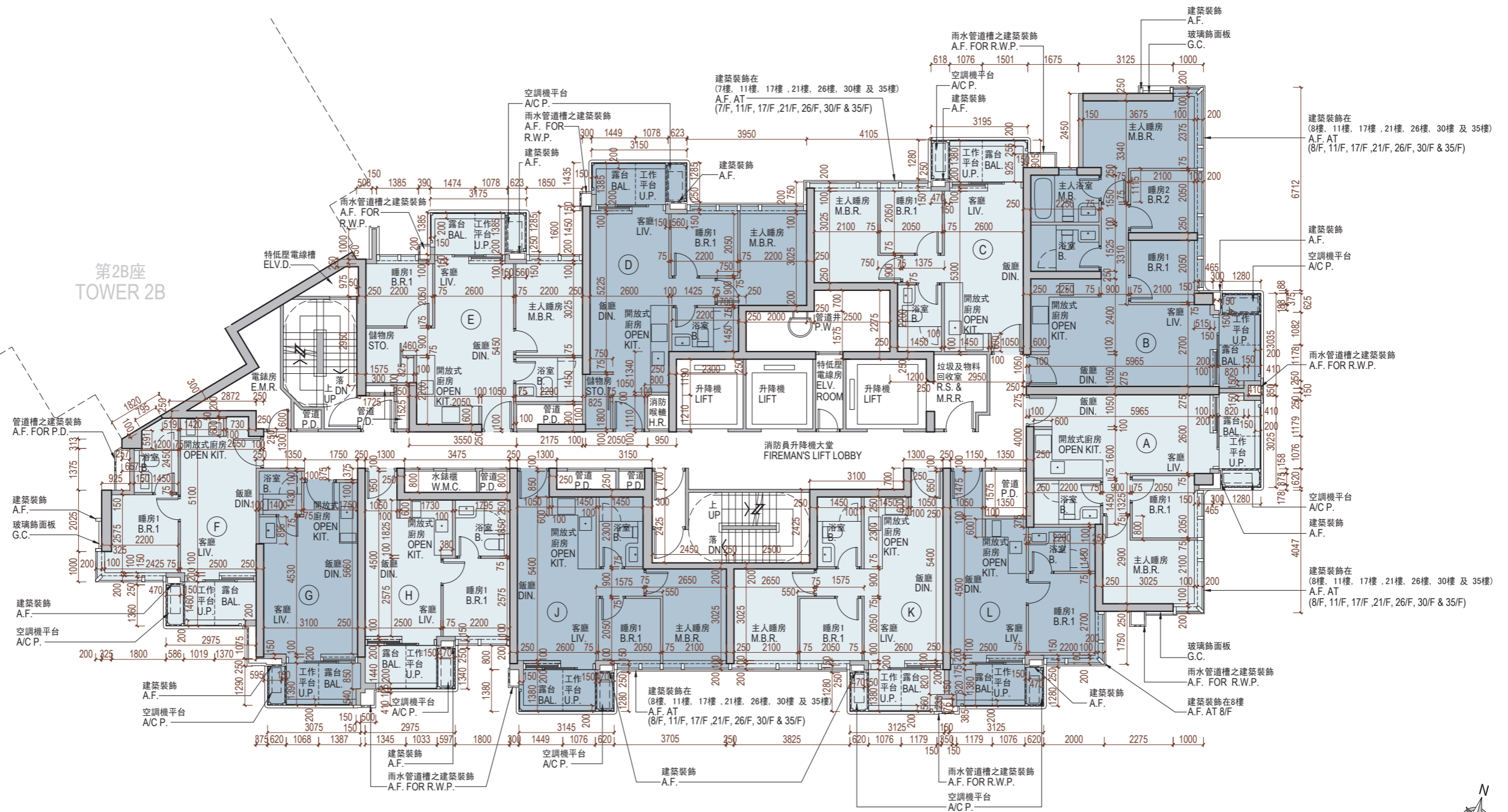
樓面平面圖中顯示之名詞及簡稱之圖例請參閱「期數的住宅物業的樓面平面圖」一節的首頁。

# 11 FLOOR PLANS OF RESIDENTIAL PROPERTIES IN THE PHASE

## 期數的住宅物業的樓面平面圖

TOWER 3  
第3座

8/F-12/F, 15/F-23/F, 25/F-33/F & 35/F-37/F  
8樓至12樓、15樓至23樓、25樓至33樓及35樓至37樓





# 11 FLOOR PLANS OF RESIDENTIAL PROPERTIES IN THE PHASE

## 期數的住宅物業的樓面平面圖

	Tower 座數	Floor 樓層	Flat 單位										
			A	B	C	D	E	F	G	H	J	K	L
The thickness of the floor slabs (excluding plaster) of each residential property (mm) 每個住宅物業的樓板(不包括灰泥)的厚度(毫米)	Tower 3 第3座	8/F 8樓	150	150	150	150	150	150	150	150	150	150	150
The floor-to-floor height (refers to the height between the top surface of the structural slab of a floor and the top surface of the structural slab of its immediate upper floor) of each residential property (mm) 每個住宅物業的層與層之間的高度(指該樓層之石屎地台面與上一層石屎地台面之高度距離)(毫米)			3150, 3225#, 3325#, 3500#, 3550#	3150, 3225#, 3325#, 3500#, 3550#	3150, 3225#, 3325#, 3500#, 3550#	3150, 3150 <sup>^</sup> , 3150 <sup>*</sup> , 3150 <sup>**</sup>	3150, 3150 <sup>^</sup> , 3150 <sup>**</sup> , 3150 <sup>^^</sup>	3150, 3150 <sup>^</sup> , 3150 <sup>*</sup> , 3150 <sup>**</sup>	3150, 3150 <sup>^</sup> , 3150 <sup>**</sup> , 3150 <sup>^^</sup>	3150, 3150 <sup>^</sup> , 3150 <sup>*</sup> , 3150 <sup>**</sup>	3150, 3150 <sup>^</sup> , 3150 <sup>*</sup> , 3150 <sup>**</sup>	3150, 3150 <sup>^</sup> , 3150 <sup>*</sup> , 3150 <sup>**</sup>	3150, 3225#, 3275#, 3500#, 3550#
The thickness of the floor slabs (excluding plaster) of each residential property (mm) 每個住宅物業的樓板(不包括灰泥)的厚度(毫米)		9/F-12/F, 15/F-23/F, 25/F-33/F & 35/F-37/F 9樓至12樓、15樓至23樓、25樓至33樓及35樓至37樓	150	150	150	150	150	150	150	150	150	150	150
The floor-to-floor height (refers to the height between the top surface of the structural slab of a floor and the top surface of the structural slab of its immediate upper floor) of each residential property (mm) 每個住宅物業的層與層之間的高度(指該樓層之石屎地台面與上一層石屎地台面之高度距離)(毫米)			3150, 3150 <sup>^</sup> , 3150 <sup>*</sup> , 3150 <sup>**</sup>	3150, 3150 <sup>^</sup> , 3150 <sup>*</sup> , 3150 <sup>**</sup>	3150, 3150 <sup>^</sup> , 3150 <sup>*</sup> , 3150 <sup>**</sup>	3150, 3150 <sup>^</sup> , 3150 <sup>*</sup> , 3150 <sup>**</sup>	3150, 3150 <sup>^</sup> , 3150 <sup>**</sup> , 3150 <sup>^^</sup>	3150, 3150 <sup>^</sup> , 3150 <sup>*</sup> , 3150 <sup>**</sup>	3150, 3150 <sup>^</sup> , 3150 <sup>**</sup> , 3150 <sup>^^</sup>	3150, 3150 <sup>^</sup> , 3150 <sup>*</sup> , 3150 <sup>**</sup>	3150, 3150 <sup>^</sup> , 3150 <sup>*</sup> , 3150 <sup>**</sup>	3150, 3150 <sup>^</sup> , 3150 <sup>*</sup> , 3150 <sup>**</sup>	3150, 3150 <sup>^</sup> , 3150 <sup>**</sup> , 3150 <sup>^^</sup>

- <sup>^</sup> inclusive of the sunken depth of the sunken slab on the floor of this floor (50mm)
- <sup>\*</sup> inclusive of the sunken depth of the sunken slab on the floor of this floor (225mm)
- <sup>^^</sup> inclusive of the sunken depth of the sunken slab on the floor of this floor (275mm)
- <sup>\*\*</sup> inclusive of the sunken depth of the sunken slab on the floor of this floor (325mm)
- <sup>#</sup> inclusive of the sunken depth of the sunken slab on the floor of this floor (400mm)

- <sup>^</sup> 包括本層地台跌級樓板之跌級深度 (50毫米)
- <sup>\*</sup> 包括本層地台跌級樓板之跌級深度 (225毫米)
- <sup>^^</sup> 包括本層地台跌級樓板之跌級深度 (275毫米)
- <sup>\*\*</sup> 包括本層地台跌級樓板之跌級深度 (325毫米)
- <sup>#</sup> 包括本層地台跌級樓板之跌級深度 (400毫米)

The internal areas of the residential properties on the upper floors will generally be slightly larger than those on the lower floors because of the reducing thickness of the structural walls on the upper floors. (Note: Not applicable to the Phase)

The dimensions in the floor plans are all structural dimensions in millimetre.

Please refer to the first page of the section "Floor Plans of Residential Properties in the Phase" for legend for the terms and abbreviations shown on the floor plan.

因住宅物業的較高樓層的結構牆的厚度遞減，較高樓層的內部面積，一般比較低樓層的內部面積稍大。(註：不適用於期數)

樓面平面圖之尺規所列數字為以毫米標示之建築結構尺寸。

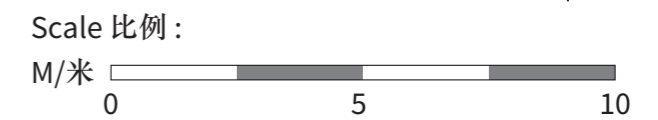
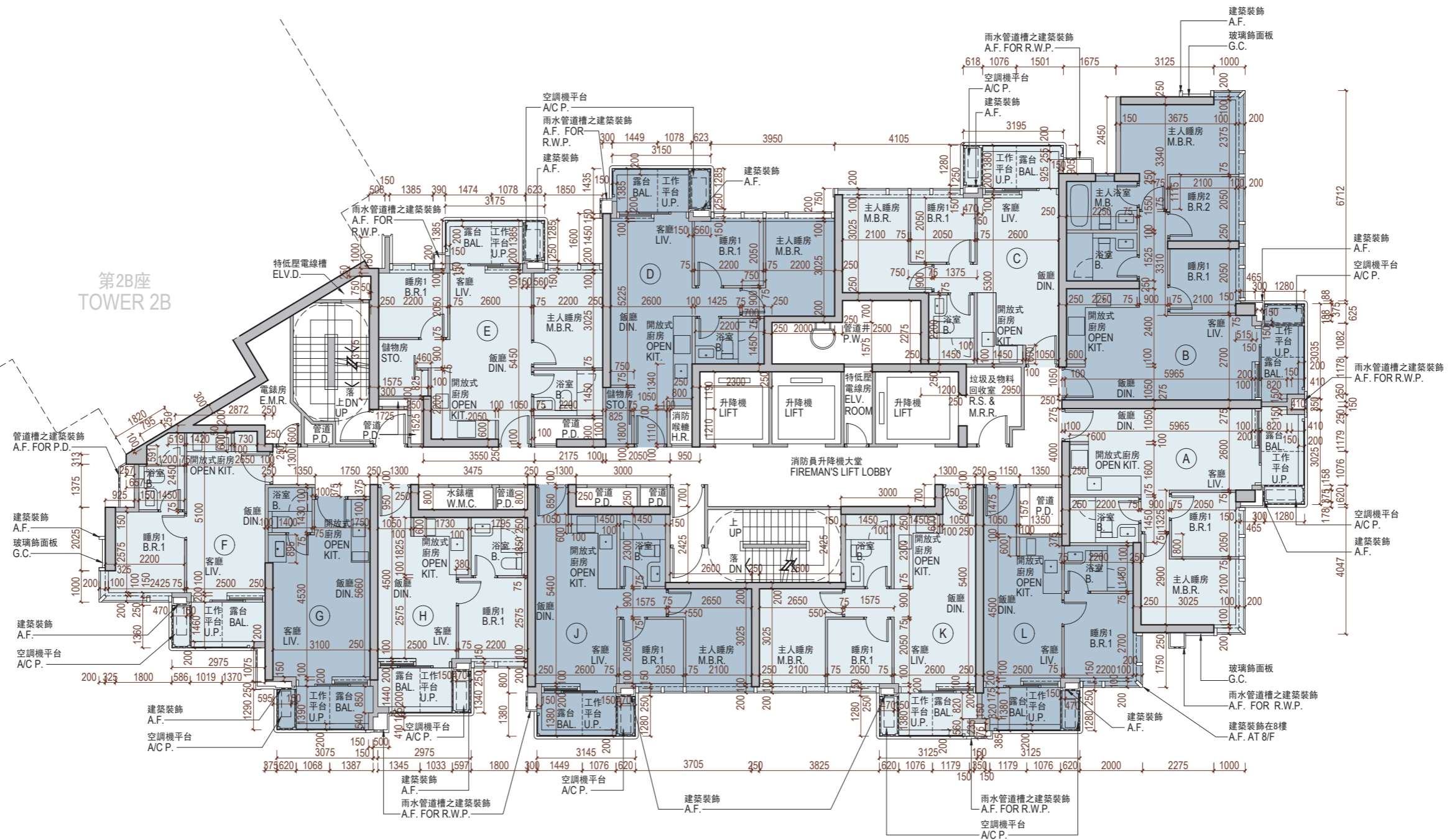
樓面平面圖中顯示之名詞及簡稱之圖例請參閱「期數的住宅物業的樓面平面圖」一節的首頁。

# 11 FLOOR PLANS OF RESIDENTIAL PROPERTIES IN THE PHASE

## 期數的住宅物業的樓面平面圖

TOWER 3  
第3座

38/F  
38樓



# 11 FLOOR PLANS OF RESIDENTIAL PROPERTIES IN THE PHASE

## 期數的住宅物業的樓面平面圖

	Tower 座數	Floor 樓層	Flat 單位											
			A	B	C	D	E	F	G	H	J	K	L	
The thickness of the floor slabs (excluding plaster) of each residential property (mm) 每個住宅物業的樓板(不包括灰泥)的厚度(毫米)			150, 450	150, 200, 450	150	150	150	150	150	150, 450	150, 450	150	150	150
The floor-to-floor height (refers to the height between the top surface of the structural slab of a floor and the top surface of the structural slab of its immediate upper floor) of each residential property (mm) 每個住宅物業的層與層之間的高度(指該樓層之石屎地台面與上一層石屎地台面之高度距離)(毫米)	Tower 3 第3座	38/F 38樓	3100, 3400, 3450 <sup>^</sup> , 3625 <sup>*</sup> , 3725 <sup>**</sup>	3050, 3100, 3150, 3375 <sup>**</sup> , 3400, 3450 <sup>^</sup> , 3625 <sup>*</sup> , 3725 <sup>**</sup>	3400, 3400 <sup>^</sup> , 3400 <sup>*</sup> , 3400 <sup>**</sup>	3400, 3400 <sup>^</sup> , 3400 <sup>*</sup> , 3400 <sup>**</sup>	3125, 3400, 3400 <sup>^</sup> , 3400 <sup>^^</sup> , 3400 <sup>**</sup>	3150, 3200 <sup>^</sup> , 3375 <sup>*</sup> , 3400, 3450 <sup>^</sup> , 3475 <sup>**</sup> , 3625 <sup>*</sup> , 3725 <sup>**</sup>	3100, 3400, 3450 <sup>^</sup> , 3675 <sup>^^</sup> , 3725 <sup>**</sup>	3100, 3400, 3450 <sup>^</sup> , 3625 <sup>*</sup> , 3725 <sup>**</sup>	3050, 3100, 3100 <sup>^</sup> , 3350, 3375 <sup>**</sup> , 3400, 3450 <sup>^</sup> , 3625 <sup>*</sup> , 3725 <sup>**</sup>	3075, 3125 <sup>^</sup> , 3350 <sup>^^</sup> , 3400, 3400 <sup>**</sup> , 3450 <sup>^</sup> , 3675 <sup>^^</sup> , 3725 <sup>**</sup>	3075, 3100, 3150, 3350, 3400, 3425 <sup>**</sup> , 3450 <sup>^</sup> , 3725 <sup>**</sup>	

<sup>^</sup> inclusive of the sunken depth of the sunken slab on the floor of this floor (50mm)

<sup>\*</sup> inclusive of the sunken depth of the sunken slab on the floor of this floor (225mm)

<sup>^^</sup> inclusive of the sunken depth of the sunken slab on the floor of this floor (275mm)

<sup>\*\*</sup> inclusive of the sunken depth of the sunken slab on the floor of this floor (325mm)

The internal areas of the residential properties on the upper floors will generally be slightly larger than those on the lower floors because of the reducing thickness of the structural walls on the upper floors. (Note: Not applicable to the Phase)

The dimensions in the floor plans are all structural dimensions in millimetre.

Please refer to the first page of the section "Floor Plans of Residential Properties in the Phase" for legend for the terms and abbreviations shown on the floor plan.

<sup>^</sup> 包括本層地台跌級樓板之跌級深度 (50毫米)

<sup>\*</sup> 包括本層地台跌級樓板之跌級深度 (225毫米)

<sup>^^</sup> 包括本層地台跌級樓板之跌級深度 (275毫米)

<sup>\*\*</sup> 包括本層地台跌級樓板之跌級深度 (325毫米)

因住宅物業的較高樓層的結構牆的厚度遞減，較高樓層的內部面積，一般比較低樓層的內部面積稍大。(註：不適用於期數)

樓面平面圖之尺規所列數字為以毫米標示之建築結構尺寸。

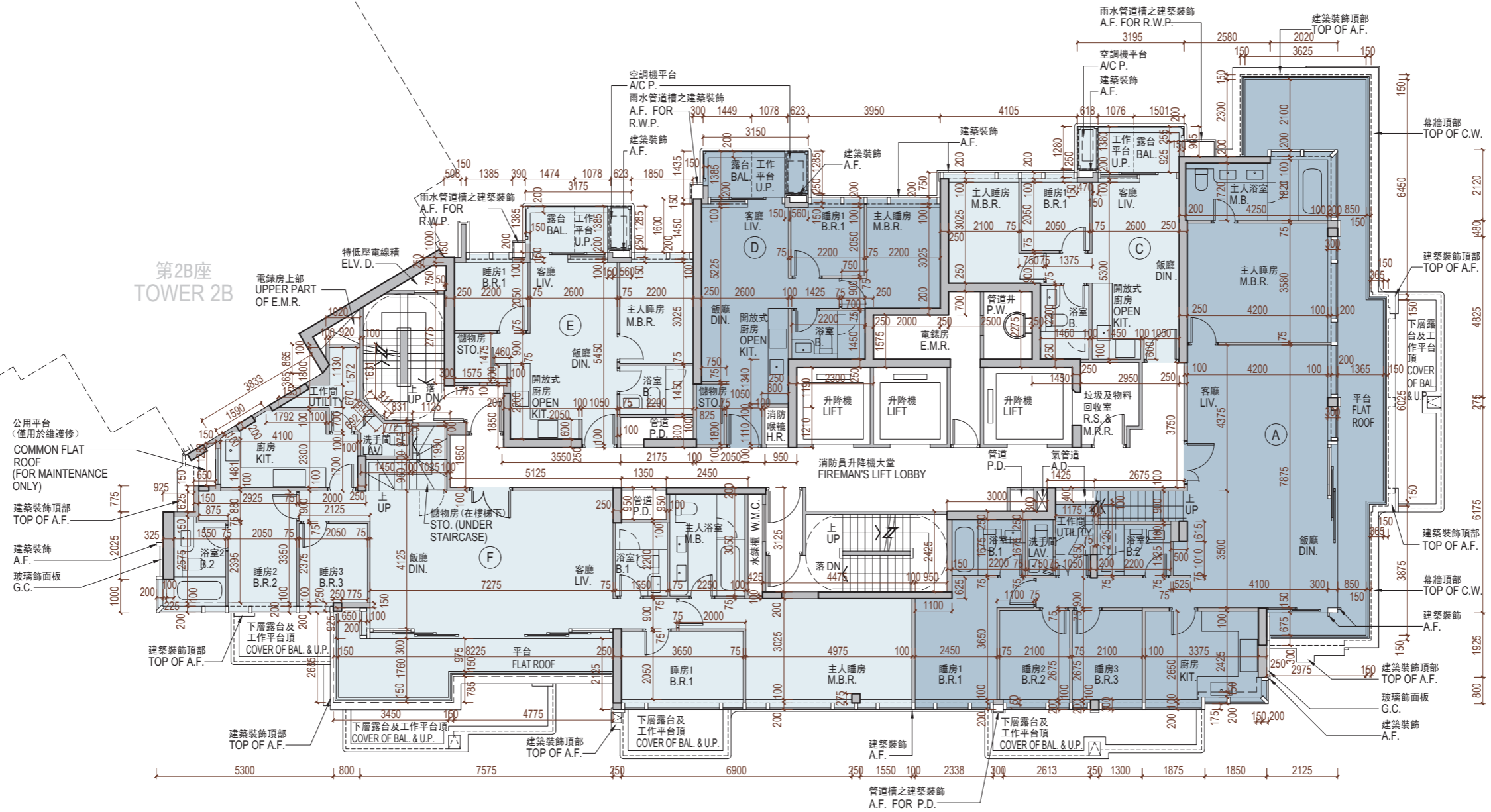
樓面平面圖中顯示之名詞及簡稱之圖例請參閱「期數的住宅物業的樓面平面圖」一節的首頁。



# 11 FLOOR PLANS OF RESIDENTIAL PROPERTIES IN THE PHASE

## 期數的住宅物業的樓面平面圖

TOWER 3 39/F  
第3座 39樓



Scale 比例：  
M/米 0 5 10

# 11 FLOOR PLANS OF RESIDENTIAL PROPERTIES IN THE PHASE

## 期數的住宅物業的樓面平面圖

	Tower 座數	Floor 樓層	Flat 單位				
			A	C	D	E	F
The thickness of the floor slabs (excluding plaster) of each residential property (mm) 每個住宅物業的樓板(不包括灰泥)的厚度(毫米)			150, 175, 200	150	150, 200	150, 200	150, 175, 200
The floor-to-floor height (refers to the height between the top surface of the structural slab of a floor and the top surface of the structural slab of its immediate upper floor) of each residential property (mm) 每個住宅物業的層與層之間的高度(指該樓層之石屎地台面與上一層石屎地台面之高度距離)(毫米)	Tower 3 第3座	39/F 39樓	3100, 3400, 3450^, 3450~, 3650##, 3700~~, 3725**, 3750~	3400, 3450^, 3625*, 3725**	3400, 3450^, 3625*, 3675*, 3725**	3400, 3450, 3500^, 3675^^, 3725^^, 3775**	3400, 3450^, 3650##, 3700~~, 3750~

^ inclusive of the sunken depth of the sunken slab on the floor of this floor (50mm)

\* inclusive of the sunken depth of the sunken slab on the floor of this floor (225mm)

## inclusive of the sunken depth of the sunken slab on the floor of this floor (250mm)

^^ inclusive of the sunken depth of the sunken slab on the floor of this floor (275mm)

\*\* inclusive of the sunken depth of the sunken slab on the floor of this floor (325mm)

~~ inclusive of the sunken depth of the sunken slab on the floor of this floor (300mm)

~ inclusive of the sunken depth of the sunken slab on the floor of this floor (350mm)

^ 包括本層地台跌級樓板之跌級深度 (50毫米)

\* 包括本層地台跌級樓板之跌級深度 (225毫米)

## 包括本層地台跌級樓板之跌級深度 (250毫米)

^^ 包括本層地台跌級樓板之跌級深度 (275毫米)

\*\* 包括本層地台跌級樓板之跌級深度 (325毫米)

~~ 包括本層地台跌級樓板之跌級深度 (300毫米)

~ 包括本層地台跌級樓板之跌級深度 (350毫米)

The internal areas of the residential properties on the upper floors will generally be slightly larger than those on the lower floors because of the reducing thickness of the structural walls on the upper floors. (Note: Not applicable to the Phase)

The dimensions in the floor plans are all structural dimensions in millimetre.

Please refer to the first page of the section "Floor Plans of Residential Properties in the Phase" for legend for the terms and abbreviations shown on the floor plan.

因住宅物業的較高樓層的結構牆的厚度遞減，較高樓層的內部面積，一般比較低樓層的內部面積稍大。(註：不適用於期數)

樓面平面圖之尺規所列數字為以毫米標示之建築結構尺寸。

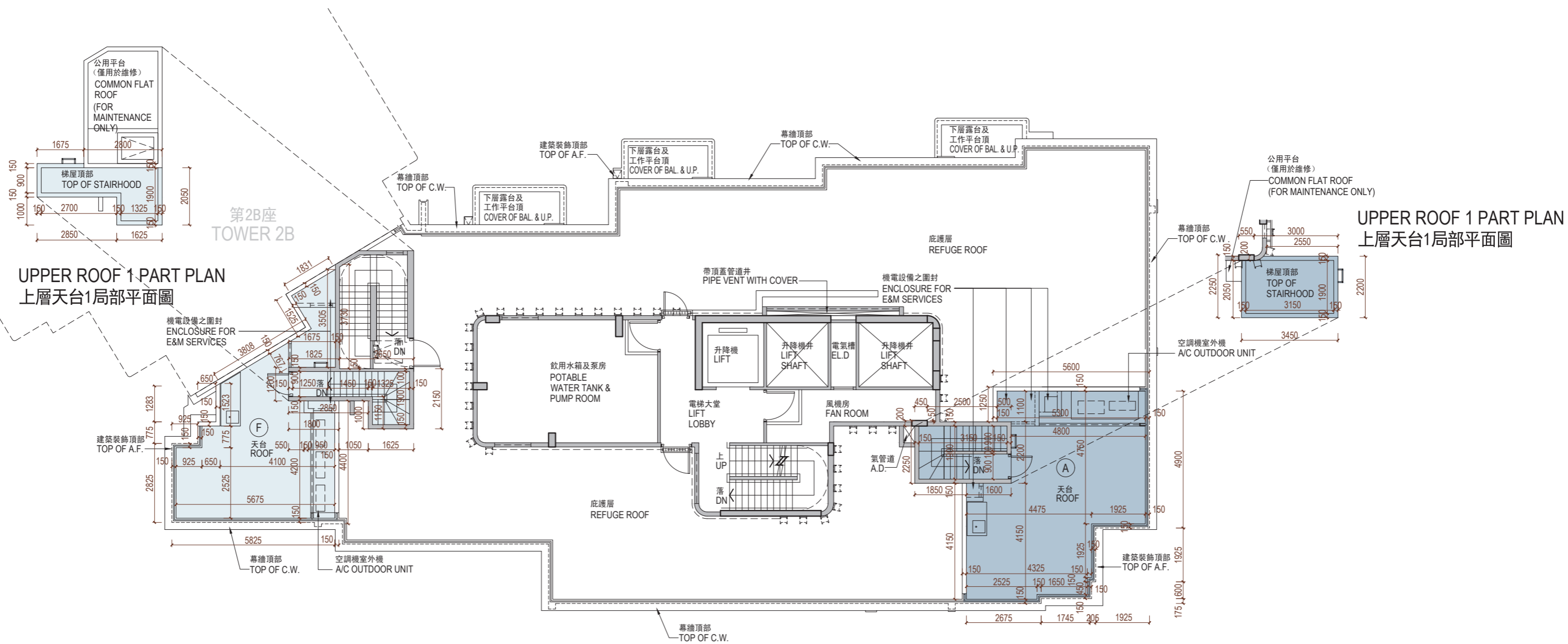
樓面平面圖中顯示之名詞及簡稱之圖例請參閱「期數的住宅物業的樓面平面圖」一節的首頁。

# 11 FLOOR PLANS OF RESIDENTIAL PROPERTIES IN THE PHASE

## 期數的住宅物業的樓面平面圖

TOWER 3  
第3座

ROOF  
天台



Scale 比例：  
M/米 0 5 10



# 11 FLOOR PLANS OF RESIDENTIAL PROPERTIES IN THE PHASE

## 期數的住宅物業的樓面平面圖

	Tower 座數	Floor 樓層	Flat 單位	
			A	F
The thickness of the floor slabs (excluding plaster) of each residential property (mm) 每個住宅物業的樓板(不包括灰泥)的厚度(毫米)	Tower 3 第3座	ROOF 天台	Not applicable 不適用	
The floor-to-floor height (refers to the height between the top surface of the structural slab of a floor and the top surface of the structural slab of its immediate upper floor) of each residential property (mm) 每個住宅物業的層與層之間的高度(指該樓層之石屎地台面與上一層石屎地台面之高度距離)(毫米)				

The internal areas of the residential properties on the upper floors will generally be slightly larger than those on the lower floors because of the reducing thickness of the structural walls on the upper floors. (Note: Not applicable to the Phase)

The dimensions in the floor plans are all structural dimensions in millimetre.

Please refer to the first page of the section "Floor Plans of Residential Properties in the Phase" for legend for the terms and abbreviations shown on the floor plan.

因住宅物業的較高樓層的結構牆的厚度遞減，較高樓層的內部面積，一般比較低樓層的內部面積稍大。(註：不適用於期數)

樓面平面圖之尺規所列數字為以毫米標示之建築結構尺寸。

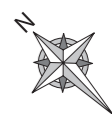
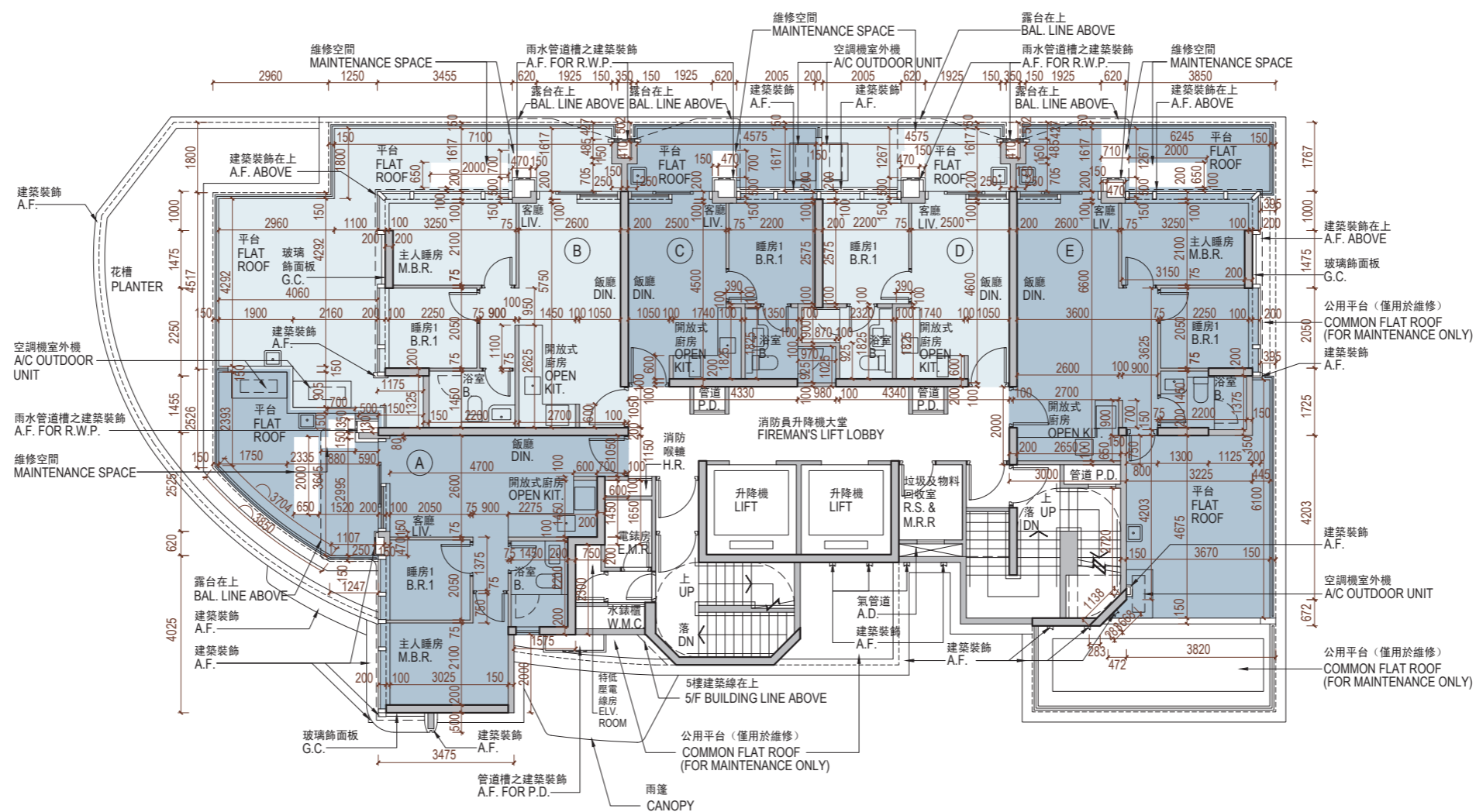
樓面平面圖中顯示之名詞及簡稱之圖例請參閱「期數的住宅物業的樓面平面圖」一節的首頁。

# 11 FLOOR PLANS OF RESIDENTIAL PROPERTIES IN THE PHASE

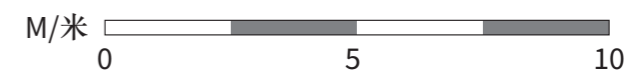
## 期數的住宅物業的樓面平面圖

TOWER 5  
第5座

1/F  
1樓



Scale 比例:



# 11 FLOOR PLANS OF RESIDENTIAL PROPERTIES IN THE PHASE

## 期數的住宅物業的樓面平面圖

	Tower 座數	Floor 樓層	Flat 單位				
			A	B	C	D	E
The thickness of the floor slabs (excluding plaster) of each residential property (mm) 每個住宅物業的樓板(不包括灰泥)的厚度(毫米)			150	150	150	150	150
The floor-to-floor height (refers to the height between the top surface of the structural slab of a floor and the top surface of the structural slab of its immediate upper floor) of each residential property (mm) 每個住宅物業的層與層之間的高度(指該樓層之石屎地台面與上一層石屎地台面之高度距離)(毫米)	Tower 5 第5座	1/F 1樓	3150, 3300#, 3600#, 3650#	3150, 3325#, 3425#, 3600#, 3650#	3150, 3325#, 3425#, 3600#, 3650#	3150, 3325#, 3425#, 3600#, 3650#	3150, 3325#, 3600#, 3650#

# Inclusive of the sunken depth of the sunken slab on the floor of this floor (500mm)

The internal areas of the residential properties on the upper floors will generally be slightly larger than those on the lower floors because of the reducing thickness of the structural walls on the upper floors. (Note: Not applicable to the Phase)

The dimensions in the floor plans are all structural dimensions in millimetre.

Please refer to the first page of the section "Floor Plans of Residential Properties in the Phase" for legend for the terms and abbreviations shown on the floor plan.

# 包括本層地台跌級樓板之跌級深度 (500毫米)

因住宅物業的較高樓層的結構牆的厚度遞減，較高樓層的內部面積，一般比較低樓層的內部面積稍大。(註：不適用於期數)

樓面平面圖之尺規所列數字為以毫米標示之建築結構尺寸。

樓面平面圖中顯示之名詞及簡稱之圖例請參閱「期數的住宅物業的樓面平面圖」一節的首頁。

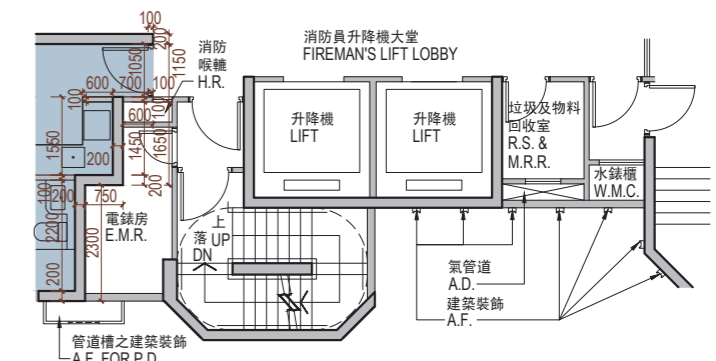
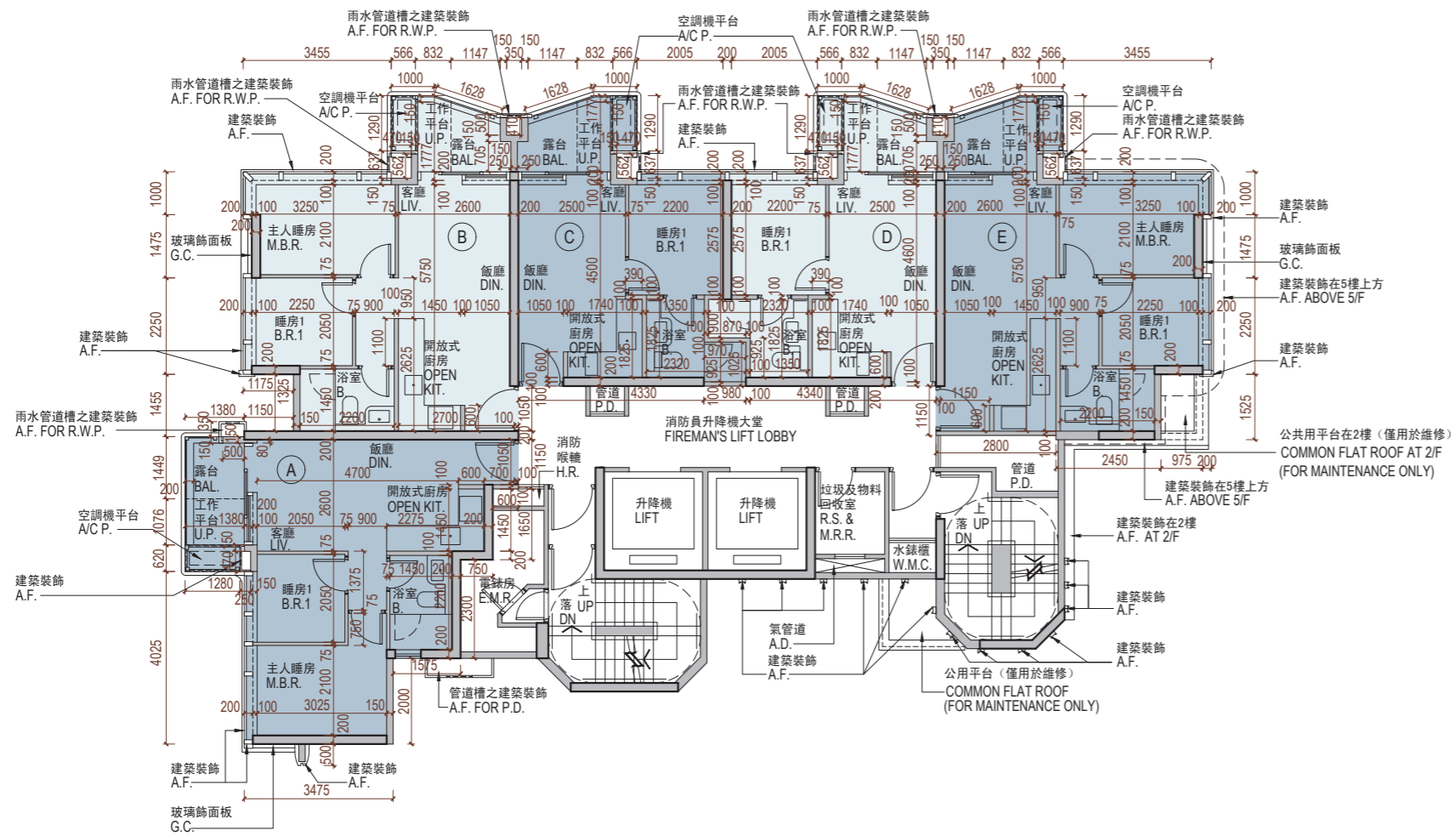


# 11 FLOOR PLANS OF RESIDENTIAL PROPERTIES IN THE PHASE

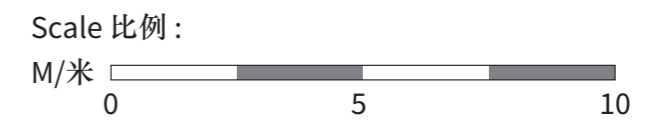
## 期數的住宅物業的樓面平面圖

TOWER 5  
第5座

2/F-3/F & 5/F  
2樓至3樓及5樓



5/F PART PLAN  
5樓局部平面圖



# 11 FLOOR PLANS OF RESIDENTIAL PROPERTIES IN THE PHASE

## 期數的住宅物業的樓面平面圖

	Tower 座數	Floor 樓層	Flat 單位				
			A	B	C	D	E
The thickness of the floor slabs (excluding plaster) of each residential property (mm) 每個住宅物業的樓板(不包括灰泥)的厚度(毫米)	Tower 5 第5座	2/F-3/F 2樓至3樓	150	150	150	150	150
The floor-to-floor height (refers to the height between the top surface of the structural slab of a floor and the top surface of the structural slab of its immediate upper floor) of each residential property (mm) 每個住宅物業的層與層之間的高度(指該樓層之石屎地台面與上一層石屎地台面之高度距離)(毫米)			3150, 3150^, 3150~	3150, 3150^, 3150*, 3150**	3150, 3150^, 3150*, 3150**	3150, 3150^, 3150*, 3150**	3150, 3150^, 3150**
The thickness of the floor slabs (excluding plaster) of each residential property (mm) 每個住宅物業的樓板(不包括灰泥)的厚度(毫米)		150	150	150	150	150	
The floor-to-floor height (refers to the height between the top surface of the structural slab of a floor and the top surface of the structural slab of its immediate upper floor) of each residential property (mm) 每個住宅物業的層與層之間的高度(指該樓層之石屎地台面與上一層石屎地台面之高度距離)(毫米)		3400, 3400^, 3400~	3400, 3400^, 3400*, 3400**	3050, 3075, 3100^, 3275*, 3350, 3400, 3400^, 3400^, 3400**, 3450^, 3575*, 3625*, 3725**	3050, 3375**, 3400, 3400^, 3450^, 3575*, 3625*, 3725**	2800, 3100, 3150^, 3425**	

- ^ inclusive of the sunken depth of the sunken slab on the floor of this floor (50mm)  
 \* inclusive of the sunken depth of the sunken slab on the floor of this floor (225mm)  
 \*\* inclusive of the sunken depth of the sunken slab on the floor of this floor (325mm)  
 ~ inclusive of the sunken depth of the sunken slab on the floor of this floor (350mm)

- ^ 包括本層地台跌級樓板之跌級深度 (50毫米)  
 \* 包括本層地台跌級樓板之跌級深度 (225毫米)  
 \*\* 包括本層地台跌級樓板之跌級深度 (325毫米)  
 ~ 包括本層地台跌級樓板之跌級深度 (350毫米)

The internal areas of the residential properties on the upper floors will generally be slightly larger than those on the lower floors because of the reducing thickness of the structural walls on the upper floors. (Note: Not applicable to the Phase)

因住宅物業的較高樓層的結構牆的厚度遞減，較高樓層的內部面積，一般比較低樓層的內部面積稍大。(註：不適用於期數)

The dimensions in the floor plans are all structural dimensions in millimetre.

樓面平面圖之尺規所列數字為以毫米標示之建築結構尺寸。

Please refer to the first page of the section "Floor Plans of Residential Properties in the Phase" for legend for the terms and abbreviations shown on the floor plan.

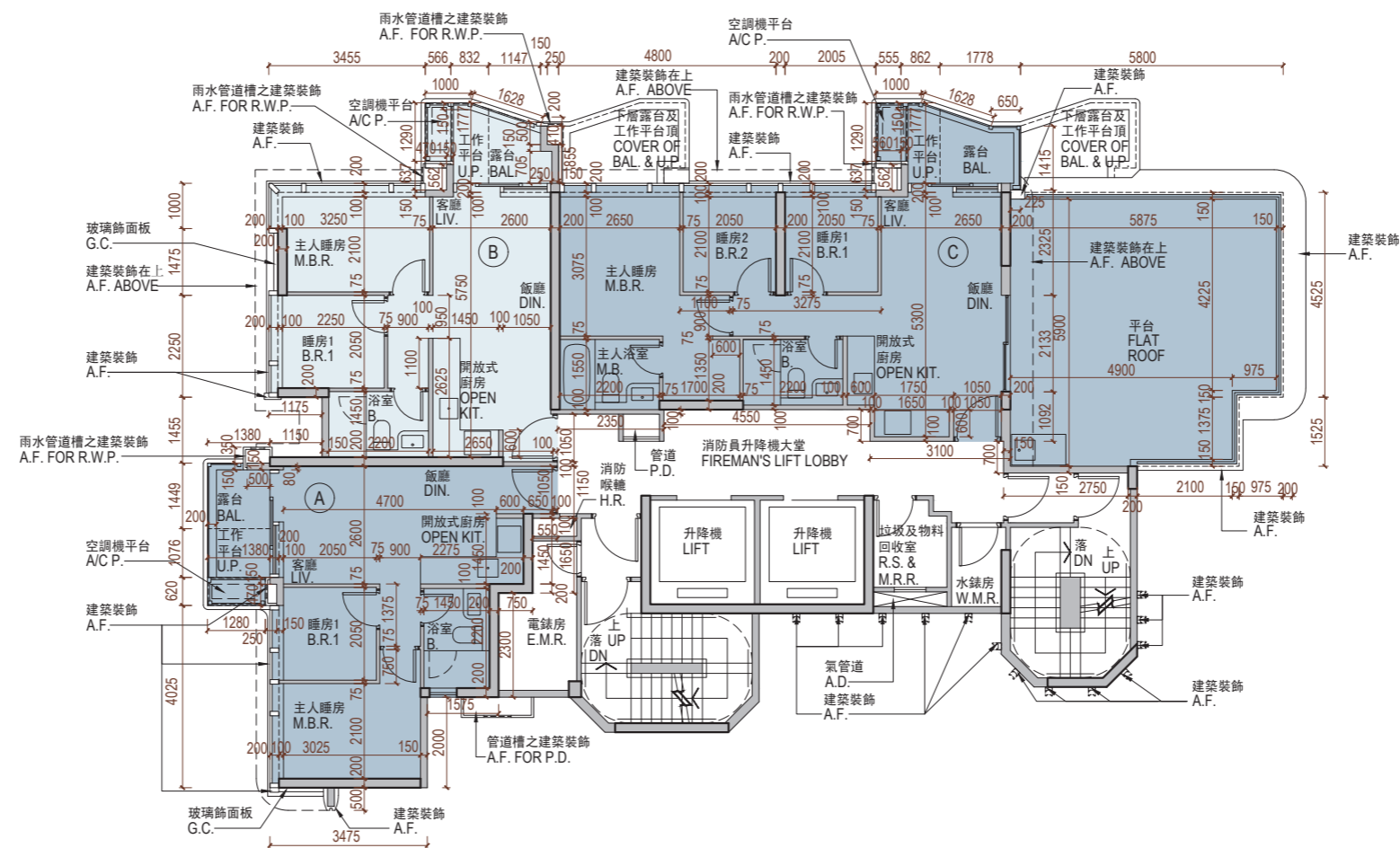
樓面平面圖中顯示之名詞及簡稱之圖例請參閱「期數的住宅物業的樓面平面圖」一節的首頁。

# 11 FLOOR PLANS OF RESIDENTIAL PROPERTIES IN THE PHASE

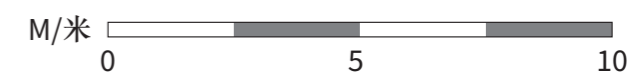
## 期數的住宅物業的樓面平面圖

TOWER 5  
第5座

6/F  
6樓



Scale 比例:





# 11 FLOOR PLANS OF RESIDENTIAL PROPERTIES IN THE PHASE

## 期數的住宅物業的樓面平面圖

	Tower 座數	Floor 樓層	Flat 單位		
			A	B	C
The thickness of the floor slabs (excluding plaster) of each residential property (mm) 每個住宅物業的樓板(不包括灰泥)的厚度(毫米)			150	150	150
The floor-to-floor height (refers to the height between the top surface of the structural slab of a floor and the top surface of the structural slab of its immediate upper floor) of each residential property (mm) 每個住宅物業的層與層之間的高度(指該樓層之石屎地台面與上一層石屎地台面之高度距離)(毫米)	Tower 5 第5座	6/F 6樓	3100, 3400, 3450^, 3750~	3400, 3450^, 3625*, 3725**	3400, 3425**, 3450^, 3450~, 3725**, 3750~

^ inclusive of the sunken depth of the sunken slab on the floor of this floor (50mm)

\* inclusive of the sunken depth of the sunken slab on the floor of this floor (225mm)

\*\* inclusive of the sunken depth of the sunken slab on the floor of this floor (325mm)

~ inclusive of the sunken depth of the sunken slab on the floor of this floor (350mm)

The internal areas of the residential properties on the upper floors will generally be slightly larger than those on the lower floors because of the reducing thickness of the structural walls on the upper floors. (Note: Not applicable to the Phase)

The dimensions in the floor plans are all structural dimensions in millimetre.

Please refer to the first page of the section "Floor Plans of Residential Properties in the Phase" for legend for the terms and abbreviations shown on the floor plan.

^ 包括本層地台跌級樓板之跌級深度 (50毫米)

\* 包括本層地台跌級樓板之跌級深度 (225毫米)

\*\* 包括本層地台跌級樓板之跌級深度 (325毫米)

~ 包括本層地台跌級樓板之跌級深度 (350毫米)

因住宅物業的較高樓層的結構牆的厚度遞減，較高樓層的內部面積，一般比較低樓層的內部面積稍大。(註：不適用於期數)

樓面平面圖之尺規所列數字為以毫米標示之建築結構尺寸。

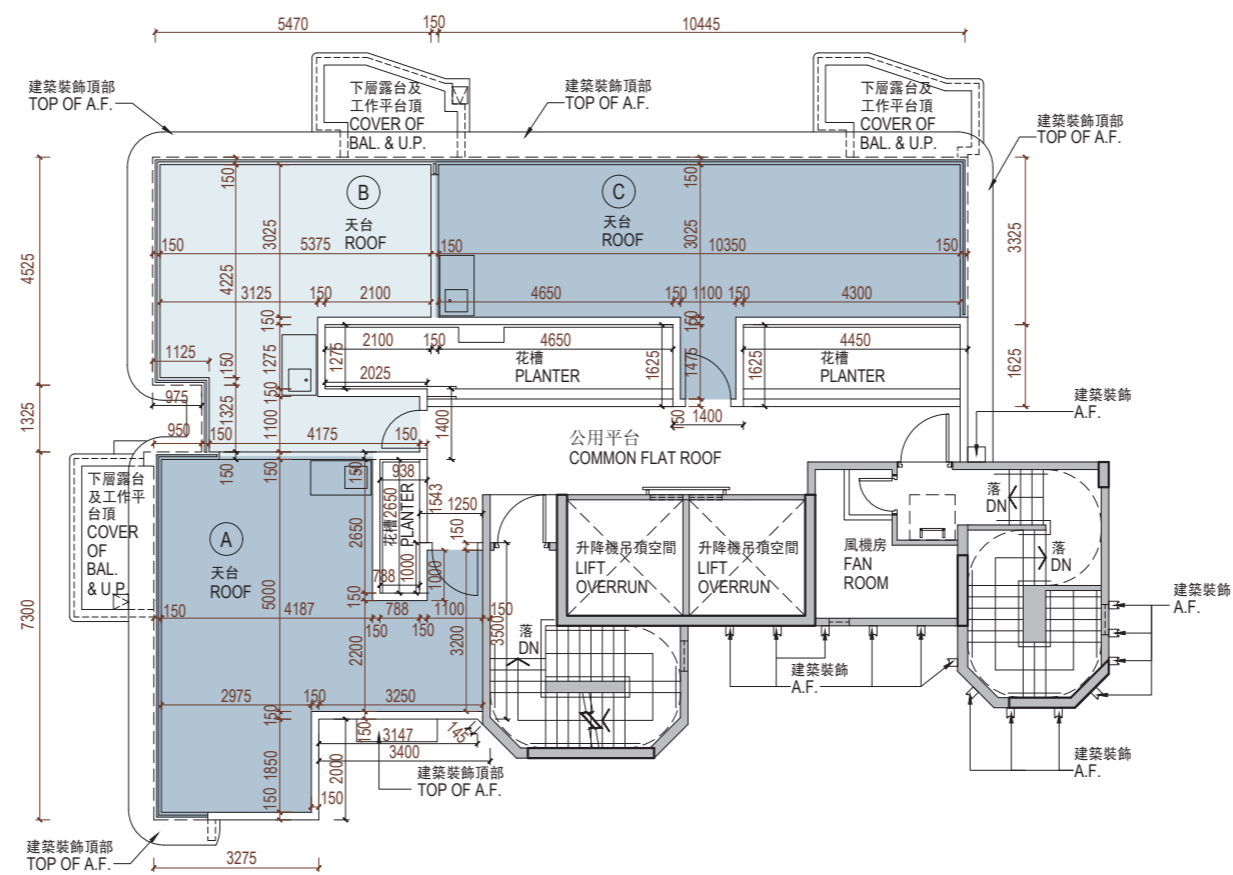
樓面平面圖中顯示之名詞及簡稱之圖例請參閱「期數的住宅物業的樓面平面圖」一節的首頁。

# 11 FLOOR PLANS OF RESIDENTIAL PROPERTIES IN THE PHASE

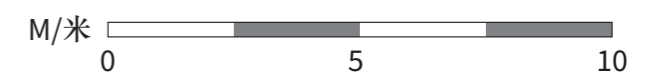
## 期數的住宅物業的樓面平面圖

TOWER 5  
第5座

ROOF  
天台



Scale 比例:



# 11 FLOOR PLANS OF RESIDENTIAL PROPERTIES IN THE PHASE

## 期數的住宅物業的樓面平面圖

	Tower 座數	Floor 樓層	Flat 單位		
			A	B	C
The thickness of the floor slabs (excluding plaster) of each residential property (mm) 每個住宅物業的樓板(不包括灰泥)的厚度(毫米)	Tower 5 第5座	Roof 天台	Not applicable 不適用		
The floor-to-floor height (refers to the height between the top surface of the structural slab of a floor and the top surface of the structural slab of its immediate upper floor) of each residential property (mm) 每個住宅物業的層與層之間的高度(指該樓層之石屎地台面與上一層石屎地台面之高度距離)(毫米)					

The internal areas of the residential properties on the upper floors will generally be slightly larger than those on the lower floors because of the reducing thickness of the structural walls on the upper floors. (Note: Not applicable to the Phase)

The dimensions in the floor plans are all structural dimensions in millimetre.

Please refer to the first page of the section "Floor Plans of Residential Properties in the Phase" for legend for the terms and abbreviations shown on the floor plan.

因住宅物業的較高樓層的結構牆的厚度遞減，較高樓層的內部面積，一般比較低樓層的內部面積稍大。(註：不適用於期數)

樓面平面圖之尺規所列數字為以毫米標示之建築結構尺寸。

樓面平面圖中顯示之名詞及簡稱之圖例請參閱「期數的住宅物業的樓面平面圖」一節的首頁。