

樓面平面圖中所使用名詞及簡稱之圖例

Legend of terms and abbreviations used on floor plans

本節適用之備註：

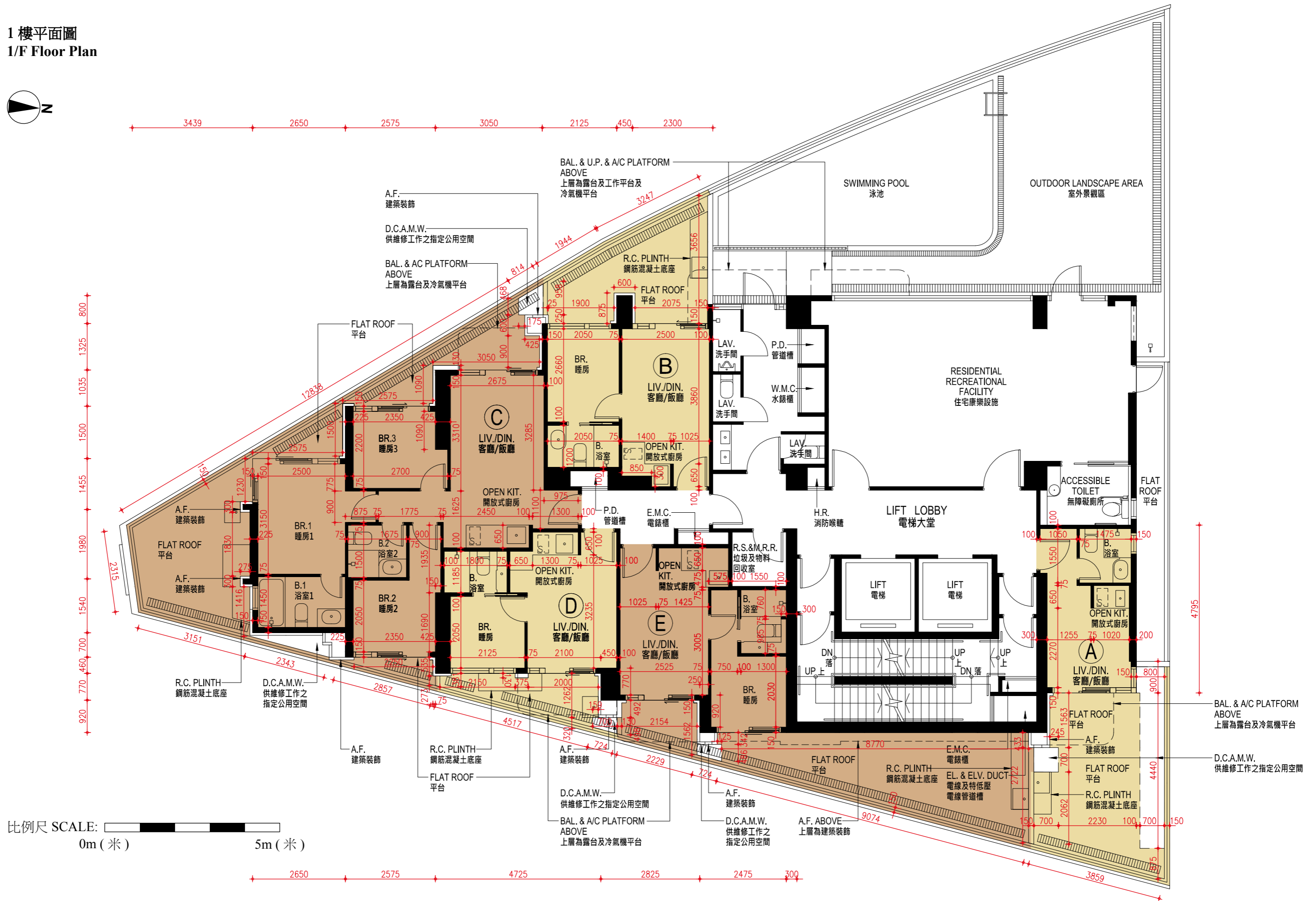
每個住宅物業的層與層之間的高度指該樓層之石屎地台面與上一層石屎地台面之高度距離。

Note applicable to this section:

Floor-to-floor height refers to the height between the top surface of the structural slab of the floor and the top surface of the structural slab of its immediate upper floor of each residential property.

ACCESSIBLE TOILET	= 無障礙廁所	Accessible Toilet	LAV.	= 洗手間	Lavatory
A/C PLATFORM	= 冷氣機平台	Air-conditioning Platform	LIFT	= 電梯	Lift
A/C HOOD	= 冷氣機簷蓬	Air-conditioning Hood	LIFT LOBBY	= 電梯大堂	Lift Lobby
A.F.	= 建築裝飾	Architectural Feature	LIV./DIN.	= 客廳 / 飯廳	Living Room / Dining Room
A.F. ABOVE	= 上層為建築裝飾	Architectural Feature Above	MAID ROOM	= 工人房	Maid Room
B.	= 浴室	Bathroom	OPEN KIT.	= 開放式廚房	Open Kitchen
BAL.	= 露台	Balcony	OUTDOOR LANDSCAPE AREA	= 室外景觀區	Outdoor Landscape Area
BAL. & A/C PLATFORM ABOVE	= 上層為露台及冷氣機平台	Balcony and Air-conditioning Platform Above	P.D.	= 管道槽	Pipe Duct
BAL. & A/C PLATFORM COVER	= 露台及冷氣機平台上蓋	Balcony and Air-conditioning Cover	R.C. PLINTH	= 鋼筋混凝土底座	Reinforced Concrete Plinth
BAL. & U.P.	= 露台及工作平台	Balcony and Utility Platform	RESIDENTIAL RECREATIONAL FACILITY	= 住宅康樂設施	Residential Recreational Facility
BAL. & U.P. & A/C PLATFORM ABOVE	= 上層為露台及工作平台及冷氣機平台	Balcony and Utility Platform and Air-conditioning Platform Above	ROOF	= 天台	Roof
BAL. & U.P. & A/C PLATFORM COVER	= 露台及工作平台及冷氣機平台上蓋	Balcony and Utility Platform and Air-conditioning Platform Cover	R.S. & M.R.R.	= 垃圾及物料回收室	Refuse Storage and Material Recovery Room
BR.	= 睡房	Bedroom	S.	= 電磁煮食爐	Induction Cooktop
D.C.A.M.W.	= 供維修工作之指定公用空間	Designated Common Area for Maintenance Works	SWIMMING POOL	= 泳池	Swimming Pool
DN	= 落	Down	T.B.E. ROOM	= 電訊及廣播設備機房	Telecommunications and Broadcasting Equipment Room
E.M.C.	= 電錶櫃	Electrical Meter Cabinet	U.P.	= 工作平台	Utility Platform
EL. & ELV. DUCT	= 電線及特低壓電線管道槽	Electrical and Extra Low Voltage Duct	U.P. & A/C PLATFORM COVER	= 工作平台及冷氣機平台上蓋	Utility Platform and Air-conditioning Platform Cover
FLAT ROOF	= 平台	Flat Roof	UP	= 上	Up
H/L	= 高位	High Level	WALK-IN CLOSET	= 衣帽間	Walk-in Closet
H.R.	= 消防喉轆	Hose Reel	WATER TANK & PUMP ROOM	= 水缸及泵房	Water Tank & Pump Room
KIT.	= 廚房	Kitchen	W.M.C.	= 水錶櫃	Water Meter Cabinet

1樓平面圖
1/F Floor Plan



1 樓平面圖
1/F Floor Plan

樓層 Floor	單位 Flat	層與層之間的高度 (毫米) Floor-to-Floor Height (mm)	樓板 (不包括灰泥) 的厚度 (毫米) Thickness of Floor Slab (excluding plaster) (mm)
1 樓 1/F	A	2800, 2850, 3150	150
	B	2800, 2850, 2950, 3150	150
	C	2750, 2800, 2850, 2950, 3150	150
	D	2750, 2800, 2850, 2950, 3150	150
	E	2800, 2950, 3150	160

因住宅物業的較高樓層的結構牆的厚度遞減，較高層的內部面積，一般比較低層的內部面積稍大。（註：此乃根據《一手住宅物業銷售條例》（第 621 章）附表 1 第 1 部第 10(2)(e) 條所規定的陳述並不適用於發展項目內的住宅物業。）

備註：

於 A、C、D 及 E 單位之平台內存有屬公用地方及設施之範圍（「上述公用地方及設施」），以及進出該等公用地方及設施或須通過該單位。有關上述公用地方及設施的位置，請參閱此樓面平面圖中以「供維修工作之指定公用空間」顯示的位置。根據發展項目的公契，發展項目管理人有權經合理預先書面通知（緊急情況除外）帶同或不帶同工人在所有合理時間內進入發展項目的所有及任何部分（包括任何單位），以行使或執行其按公契下有的任何權利或義務，包括但不限於對發展項目或公用地方及設施任何部分進行必要的維修或減少對公用地方及設施或其他業主的妨礙或干擾。

1. 平面圖所列之數字以毫米標示之建築結構呎吋。
2. 部分樓層外牆範圍設有建築裝飾。
3. 部分住宅單位的露台及 / 或平台及 / 或工作平台及 / 或冷氣機平台及 / 或外牆或附近設有外露之公用喉管。
4. 部分住宅單位客廳 / 飯廳、睡房、浴室、廚房及開放式廚房有跌級樓板及 / 或天花橫樑用以裝置冷氣系統及 / 或機電設備。
5. 露台、工作平台及冷氣機平台為不可封閉地方。
6. 樓面平面圖上所顯示的裝置符號，例如浴缸、洗滌盆、坐廁、洗滌盆櫃等乃摘自最新經批准的建築圖則，只作一般示意用途。
7. 以上平面圖中顯示之名詞及簡稱請參閱本售樓說明書第 23 頁。

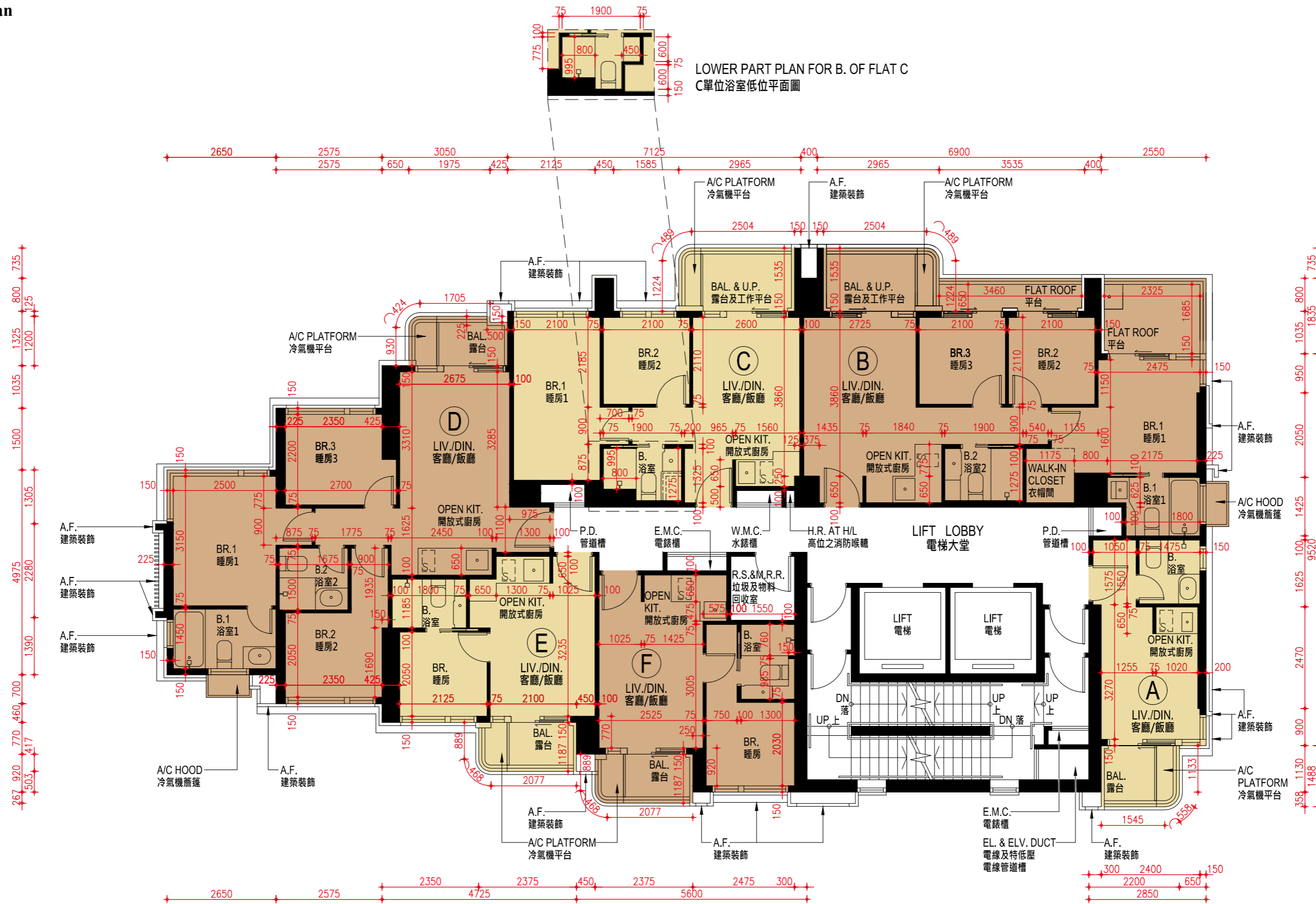
The internal areas of the residential properties on the upper floors will generally be slightly larger than those on the lower floors because of the reducing thickness of the structural walls on the upper floors. (Note: This statement required in Section 10(2)(e) in Part 1 of Schedule 1 of the Residential Properties (First-hand Sales) Ordinance (Cap.621) is not applicable to the residential properties in the Development.)

Notes:

There are areas which are common areas and facilities (“the said Common Areas and Facilities”) within the flat roofs of Flats A, C, D and E on this floor and that access to the said Common Areas and Facilities may require passage through the said Flat. For location of the said Common Areas and Facilities, please refer to the location of the “D.C.A.M.W.” shown on this Floor Plan. Pursuant to the DMC of the Development, the Manager of the Development has the power to enter with or without workmen at all reasonable times on prior written reasonable notice (except in the case of emergency) upon all and any parts of the Development including any Unit to exercise or carry out any of its powers or duties under the DMC, including without limitation to carry out necessary repairs to any part or parts of the Development or the Common Areas and Facilities or to abate any hazard or nuisance which does or may affect the Common Areas and Facilities or other Owners.

1. The dimensions in floor plans are all structural dimensions in millimeter.
2. There may be architectural features on external walls of some of the floors.
3. Common pipes exposed are located at/adjacent to balcony and/or flat roof and/or utility platform and/or air-conditioning platform and/or external wall of some residential units.
4. There are sunken slabs and/or ceiling bulkheads at living rooms/dining rooms, bedrooms, bathrooms, kitchens and open kitchens of some residential units for the air-conditioning system and/or mechanical and electrical services.
5. Balconies, utility platforms and air-conditioning platforms are non-enclosed areas.
6. Symbols of fittings shown on the floor plans, such as bathtubs, sink, water closets, sink counter, etc., are architectural symbols retrieved from the latest approved General Building Plans and are for general indication only.
7. Please refer to page 23 of this sales brochure for legend of the terms and abbreviation shown on the floor plan above.

2 樓平面圖
2/F Floor Plan



比例尺 SCALE: 0m (米) 5m (米)

2 樓平面圖
2/F Floor Plan

樓層 Floor	單位 Flat	層與層之間的高度（毫米） Floor-to-Floor Height (mm)	樓板（不包括灰泥）的厚度（毫米） Thickness of Floor Slab (excluding plaster) (mm)
2 樓 2/F	A	3150	150
	B	3150	150
	C	3150	150
	D	3150	150
	E	3150	150
	F	3150	160

因住宅物業的較高樓層的結構牆的厚度遞減，較高層的內部面積，一般比較低層的內部面積稍大。（註：此乃根據《一手住宅物業銷售條例》（第 621 章）附表 1 第 1 部第 10(2)(e) 條所規定的陳述並不適用於發展項目內的住宅物業。）

備註：

1. 平面圖所列之數字以毫米標示之建築結構呎吋。
2. 部分樓層外牆範圍設有建築裝飾。
3. 部分住宅單位的露台及 / 或平台及 / 或工作平台及 / 或冷氣機平台及 / 或外牆或附近設有外露之公用喉管。
4. 部分住宅單位客廳 / 飯廳、睡房、浴室、廚房及開放式廚房有跌級樓板及 / 或天花橫樑用以裝置冷氣系統及 / 或機電設備。
5. 露台、工作平台及冷氣機平台為不可封閉地方。
6. 樓面平面圖上所顯示的裝置符號，例如浴缸、洗滌盆、坐廁、洗滌盆櫃等乃摘自最新經批准的建築圖則，只作一般示意用途。
7. 以上平面圖中顯示之名詞及簡稱請參閱本售樓說明書第 23 頁。

The internal areas of the residential properties on the upper floors will generally be slightly larger than those on the lower floors because of the reducing thickness of the structural walls on the upper floors. (Note: This statement required in Section 10(2)(e) in Part 1 of Schedule 1 of the Residential Properties (First-hand Sales) Ordinance (Cap.621) is not applicable to the residential properties in the Development.)

Notes:

1. The dimensions in floor plans are all structural dimensions in millimeter.
2. There may be architectural features on external walls of some of the floors.
3. Common pipes exposed are located at/adjacent to balcony and/or flat roof and/or utility platform and/or air-conditioning platform and/or external wall of some residential units.
4. There are sunken slabs and/or ceiling bulkheads at living rooms/dining rooms, bedrooms, bathrooms, kitchens and open kitchens of some residential units for the air-conditioning system and/or mechanical and electrical services.
5. Balconies, utility platforms and air-conditioning platforms are non-enclosed areas.
6. Symbols of fittings shown on the floor plans, such as bathtubs, sink, water closets, sink counter, etc., are architectural symbols retrieved from the latest approved General Building Plans and are for general indication only.
7. Please refer to page 23 of this sales brochure for legend of the terms and abbreviation shown on the floor plan above.

3樓, 5樓至12樓平面圖
3/F, 5/F - 12/F Floor Plan



比例尺 SCALE: 0m (米) 5m (米)

3 樓，5 樓至 12 樓平面圖
3/F, 5/F - 12/F Floor Plan

樓層 Floor	單位 Flat	層與層之間的高度 (毫米) Floor-to-Floor Height (mm)	樓板 (不包括灰泥) 的厚度 (毫米) Thickness of Floor Slab (excluding plaster) (mm)
3 樓，5 樓至 11 樓 3/F, 5/F - 11/F	A	3150	150
	B	3150	150
	C	3150	150
	D	3150	150
	E	3150	150
	F	3150	160
12 樓 12/F	A	3150	150
	B	3150	150
	C	3150	150
	D	2800, 2850, 2900, 3100, 3150, 3200, 3300, 3450, 3500	150
	E	3100, 3150, 3200, 3350, 3450, 3500, 3550	150
	F	3150	160

因住宅物業的較高樓層的結構牆的厚度遞減，較高層的內部面積，一般比較低層的內部面積稍大。(註：此乃根據《一手住宅物業銷售條例》(第 621 章)附表 1 第 1 部第 10(2)(e) 條所規定的陳述並不適用於發展項目內的住宅物業。)

備註：

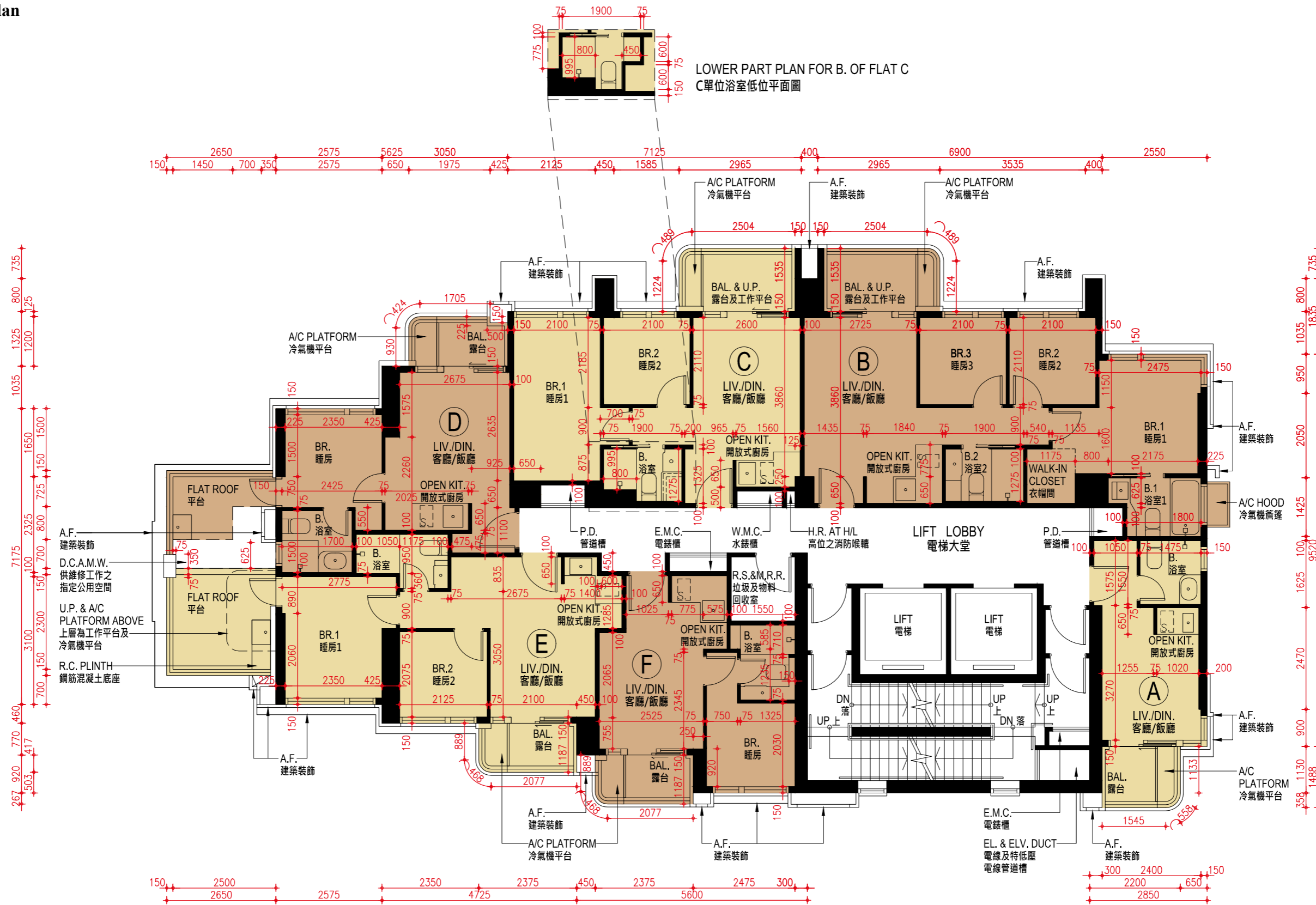
1. 平面圖所列之數字以毫米標示之建築結構呎吋。
2. 部分樓層外牆範圍設有建築裝飾。
3. 部分住宅單位的露台及 / 或平台及 / 或工作平台及 / 或冷氣機平台及 / 或外牆或附近設有外露之公用喉管。
4. 部分住宅單位客廳 / 飯廳、睡房、浴室、廚房及開放式廚房有跌級樓板及 / 或天花橫樑用以裝置冷氣系統及 / 或機電設備。
5. 露台、工作平台及冷氣機平台為不可封閉地方。
6. 樓面平面圖上所顯示的裝置符號，例如浴缸、洗滌盆、坐廁、洗滌盆櫃等乃摘自最新經批准的建築圖則，只作一般示意用途。
7. 以上平面圖中顯示之名詞及簡稱請參閱本售樓說明書第 23 頁。

The internal areas of the residential properties on the upper floors will generally be slightly larger than those on the lower floors because of the reducing thickness of the structural walls on the upper floors.(Note: This statement required in Section 10(2)(e) in Part 1 of Schedule 1 of the Residential Properties (First-hand Sales) Ordinance (Cap.621) is not applicable to the residential properties in the Development.)

Notes:

1. The dimensions in floor plans are all structural dimensions in millimeter.
2. There may be architectural features on external walls of some of the floors.
3. Common pipes exposed are located at/adjacent to balcony and/or flat roof and/or utility platform and/or air-conditioning platform and/or external wall of some residential units.
4. There are sunken slabs and/or ceiling bulkheads at living rooms/dining rooms, bedrooms, bathrooms, kitchens and open kitchens of some residential units for the air-conditioning system and/or mechanical and electrical services.
5. Balconies, utility platforms and air-conditioning platforms are non-enclosed areas.
6. Symbols of fittings shown on the floor plans, such as bathtubs, sink, water closets, sink counter, etc., are architectural symbols retrieved from the latest approved General Building Plans and are for general indication only.
7. Please refer to page 23 of this sales brochure for legend of the terms and abbreviation shown on the floor plan above.

15 樓平面圖
15/F Floor Plan



比例尺 SCALE: 0m (米) 5m (米)

15 樓平面圖
15/F Floor Plan

樓層 Floor	單位 Flat	層與層之間的高度 (毫米) Floor-to-Floor Height (mm)	樓板 (不包括灰泥) 的厚度 (毫米) Thickness of Floor Slab (excluding plaster) (mm)
15 樓 15/F	A	3150	150
	B	3150	150
	C	3150	150
	D	2850, 3150, 3450	150
	E	3150, 3450	150, 160
	F	3150	160

因住宅物業的較高樓層的結構牆的厚度遞減，較高層的內部面積，一般比較低層的內部面積稍大。（註：此乃根據《一手住宅物業銷售條例》（第 621 章）附表 1 第 1 部第 10(2)(e) 條所規定的陳述並不適用於發展項目內的住宅物業。）

備註：

於 D 單位之平台內存有屬公用地方及設施之範圍（「上述公用地方及設施」），以及進出該等公用地方及設施或須通過該單位。有關上述公用地方及設施的位置，請參閱此樓面平面圖中以「供維修工作之指定公用空間」顯示的位置。根據發展項目的公契，發展項目管理人有權經合理預先書面通知（緊急情況除外）帶同或不帶同工人在所有合理時間內進入發展項目的所有及任何部分（包括任何單位），以行使或執行其按公契下有的任何權利或義務，包括但不限於對發展項目或公用地方及設施任何部分進行必要的維修或減少對公用地方及設施或其他業主的妨礙或干擾。

1. 平面圖所列之數字以毫米標示之建築結構呎吋。
2. 部分樓層外牆範圍設有建築裝飾。
3. 部分住宅單位的露台及 / 或平台及 / 或工作平台及 / 或冷氣機平台及 / 或外牆或附近設有外露之公用喉管。
4. 部分住宅單位客廳 / 飯廳、睡房、浴室、廚房及開放式廚房有跌級樓板及 / 或天花橫樑用以裝置冷氣系統及 / 或機電設備。
5. 露台、工作平台及冷氣機平台為不可封閉地方。
6. 樓面平面圖上所顯示的裝置符號，例如浴缸、洗滌盆、坐廁、洗滌盆櫃等乃摘自最新經批准的建築圖則，只作一般示意用途。
7. 以上平面圖中顯示之名詞及簡稱請參閱本售樓說明書第 23 頁。

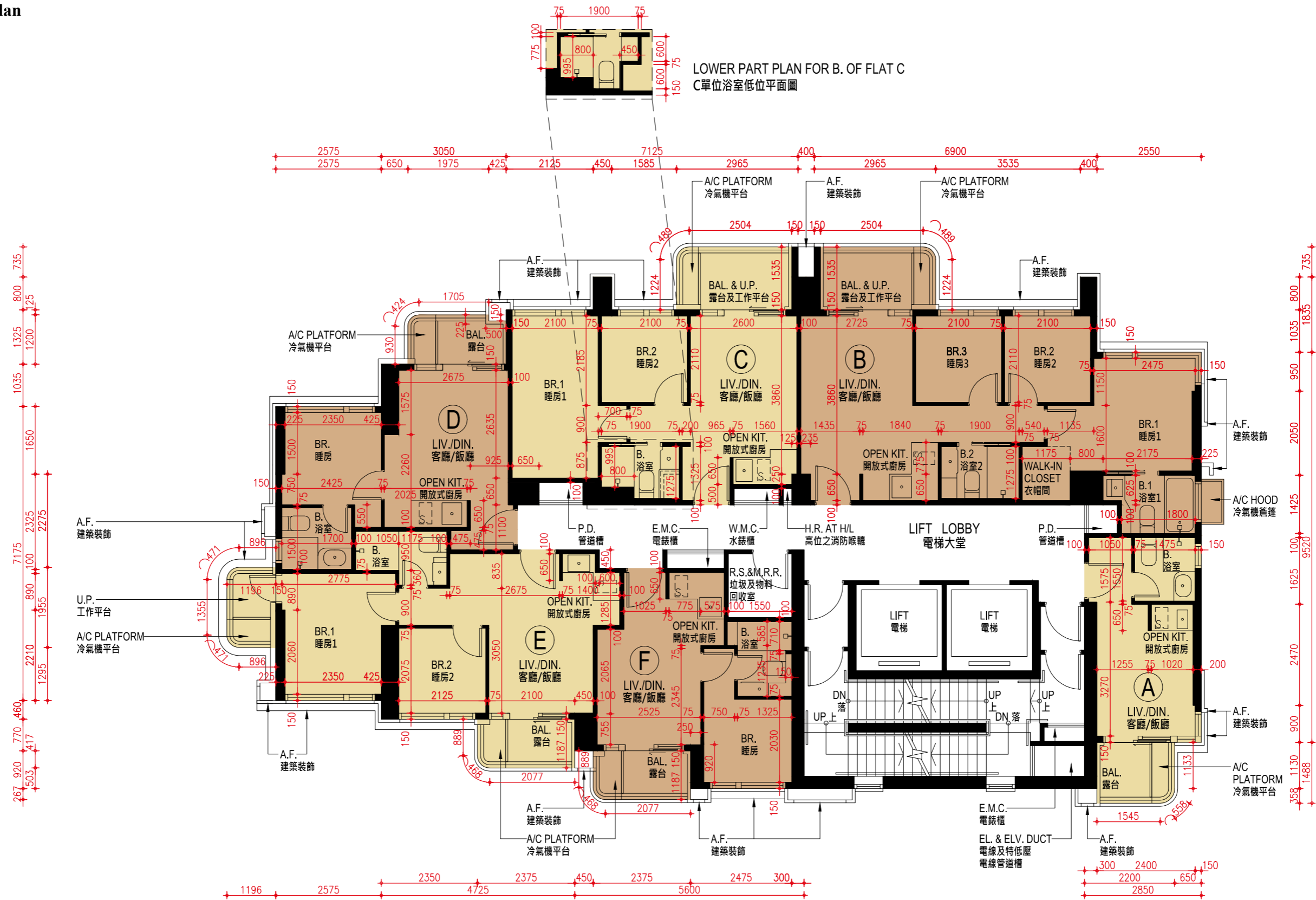
The internal areas of the residential properties on the upper floors will generally be slightly larger than those on the lower floors because of the reducing thickness of the structural walls on the upper floors. (Note: This statement required in Section 10(2)(e) in Part 1 of Schedule 1 of the Residential Properties (First-hand Sales) Ordinance (Cap.621) is not applicable to the residential properties in the Development.)

Notes:

There are areas which are common areas and facilities (“the said Common Areas and Facilities”) within the flat roof of Flat D on this floor and that access to the said Common Areas and Facilities may require passage through the said Flat. For location of the said Common Areas and Facilities, please refer to the location of the “D.C.A.M.W.” shown on this Floor Plan. Pursuant to the DMC of the Development, the Manager of the Development has the power to enter with or without workmen at all reasonable times on prior written reasonable notice (except in the case of emergency) upon all and any parts of the Development including any Unit to exercise or carry out any of its powers or duties under the DMC, including without limitation to carry out necessary repairs to any part or parts of the Development or the Common Areas and Facilities or to abate any hazard or nuisance which does or may affect the Common Areas and Facilities or other Owners.

1. The dimensions in floor plans are all structural dimensions in millimeter.
2. There may be architectural features on external walls of some of the floors.
3. Common pipes exposed are located at/adjacent to balcony and/or flat roof and/or utility platform and/or air-conditioning platform and/or external wall of some residential units.
4. There are sunken slabs and/or ceiling bulkheads at living rooms/dining rooms, bedrooms, bathrooms, kitchens and open kitchens of some residential units for the air-conditioning system and/or mechanical and electrical services.
5. Balconies, utility platforms and air-conditioning platforms are non-enclosed areas.
6. Symbols of fittings shown on the floor plans, such as bathtubs, sink, water closets, sink counter, etc., are architectural symbols retrieved from the latest approved General Building Plans and are for general indication only.
7. Please refer to page 23 of this sales brochure for legend of the terms and abbreviation shown on the floor plan above.

16樓平面圖
16/F Floor Plan



比例尺 SCALE: 0m (米) 5m (米)

16 樓平面圖
16/F Floor Plan

樓層 Floor	單位 Flat	層與層之間的高度（毫米） Floor-to-Floor Height (mm)	樓板（不包括灰泥）的厚度（毫米） Thickness of Floor Slab (excluding plaster) (mm)
16 樓 16/F	A	3150	150
	B	3150	150
	C	2800, 2850, 3150	150
	D	2800, 2850, 2900, 3100, 3150, 3200, 3450	150
	E	2850, 2900, 3150, 3350, 3500, 3550	150, 160
	F	3150	160

因住宅物業的較高樓層的結構牆的厚度遞減，較高層的內部面積，一般比較低層的內部面積稍大。（註：此乃根據《一手住宅物業銷售條例》（第 621 章）附表 1 第 1 部第 10(2)(e) 條所規定的陳述並不適用於發展項目內的住宅物業。）

備註：

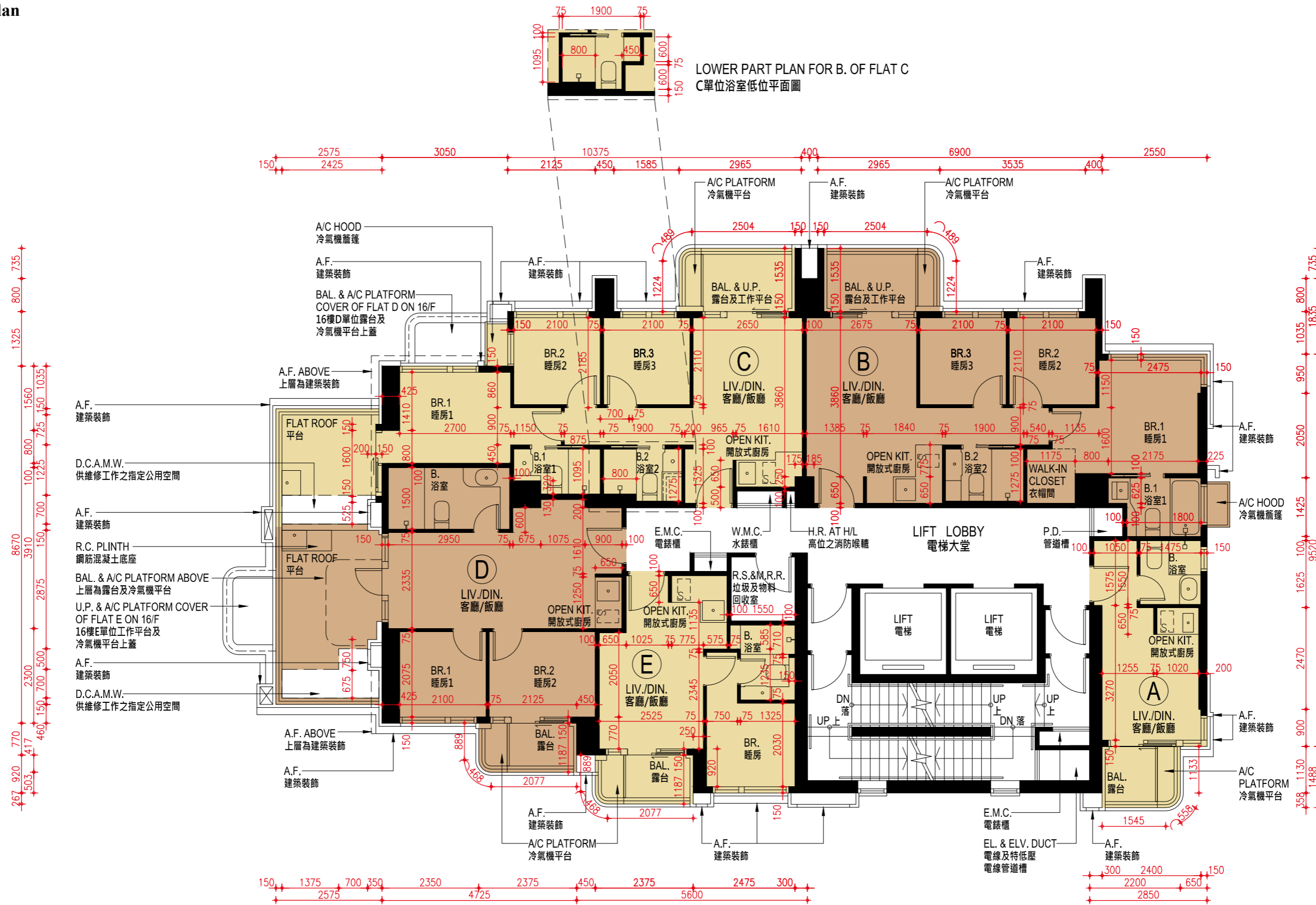
1. 平面圖所列之數字以毫米標示之建築結構呎吋。
2. 部分樓層外牆範圍設有建築裝飾。
3. 部分住宅單位的露台及 / 或平台及 / 或工作平台及 / 或冷氣機平台及 / 或外牆或附近設有外露之公用喉管。
4. 部分住宅單位客廳 / 飯廳、睡房、浴室、廚房及開放式廚房有跌級樓板及 / 或天花橫樑用以裝置冷氣系統及 / 或機電設備。
5. 露台、工作平台及冷氣機平台為不可封閉地方。
6. 樓面平面圖上所顯示的裝置符號，例如浴缸、洗滌盆、坐廁、洗滌盆櫃等乃摘自最新經批准的建築圖則，只作一般示意用途。
7. 以上平面圖中顯示之名詞及簡稱請參閱本售樓說明書第 23 頁。

The internal areas of the residential properties on the upper floors will generally be slightly larger than those on the lower floors because of the reducing thickness of the structural walls on the upper floors. (Note: This statement required in Section 10(2)(e) in Part 1 of Schedule 1 of the Residential Properties (First-hand Sales) Ordinance (Cap.621) is not applicable to the residential properties in the Development.)

Notes:

1. The dimensions in floor plans are all structural dimensions in millimeter.
2. There may be architectural features on external walls of some of the floors.
3. Common pipes exposed are located at/adjacent to balcony and/or flat roof and/or utility platform and/or air-conditioning platform and/or external wall of some residential units.
4. There are sunken slabs and/or ceiling bulkheads at living rooms/dining rooms, bedrooms, bathrooms, kitchens and open kitchens of some residential units for the air-conditioning system and/or mechanical and electrical services.
5. Balconies, utility platforms and air-conditioning platforms are non-enclosed areas.
6. Symbols of fittings shown on the floor plans, such as bathtubs, sink, water closets, sink counter, etc., are architectural symbols retrieved from the latest approved General Building Plans and are for general indication only.
7. Please refer to page 23 of this sales brochure for legend of the terms and abbreviation shown on the floor plan above.

17樓平面圖
17/F Floor Plan



比例尺 SCALE: 0m (米) 5m (米)

17 樓平面圖
17/F Floor Plan

樓層 Floor	單位 Flat	層與層之間的高度 (毫米) Floor-to-Floor Height (mm)	樓板 (不包括灰泥) 的厚度 (毫米) Thickness of Floor Slab (excluding plaster) (mm)
17 樓 17/F	A	3150	150
	B	3150	150
	C	3050, 3100, 3150, 3200	150
	D	2800, 2850, 2950, 3150, 3450, 3500	150, 160, 175
	E	3150	160

因住宅物業的較高樓層的結構牆的厚度遞減，較高層的內部面積，一般比較低層的內部面積稍大。（註：此乃根據《一手住宅物業銷售條例》（第 621 章）附表 1 第 1 部第 10(2)(e) 條所規定的陳述並不適用於發展項目內的住宅物業。）

備註：

於 C 及 D 單位之平台內存有屬公用地方及設施之範圍（「上述公用地方及設施」），以及進出該等公用地方及設施或須通過該單位。有關上述公用地方及設施的位置，請參閱此樓面平面圖中以「供維修工作之指定公用空間」顯示的位置。根據發展項目的公契，發展項目管理人有權經合理預先書面通知（緊急情況除外）帶同或不帶同工人在所有合理時間內進入發展項目的所有及任何部分（包括任何單位），以行使或執行其按公契下有的任何權利或義務，包括但不限於對發展項目或公用地方及設施任何部分進行必要的維修或減少對公用地方及設施或其他業主的妨礙或干擾。

1. 平面圖所列之數字以毫米標示之建築結構呎吋。
2. 部分樓層外牆範圍設有建築裝飾。
3. 部分住宅單位的露台及 / 或平台及 / 或工作平台及 / 或冷氣機平台及 / 或外牆或附近設有外露之公用喉管。
4. 部分住宅單位客廳 / 飯廳、睡房、浴室、廚房及開放式廚房有跌級樓板及 / 或天花橫樑用以裝置冷氣系統及 / 或機電設備。
5. 露台、工作平台及冷氣機平台為不可封閉地方。
6. 樓面平面圖上所顯示的裝置符號，例如浴缸、洗滌盆、坐廁、洗滌盆櫃等乃摘自最新經批准的建築圖則，只作一般示意用途。
7. 以上平面圖中顯示之名詞及簡稱請參閱本售樓說明書第 23 頁。

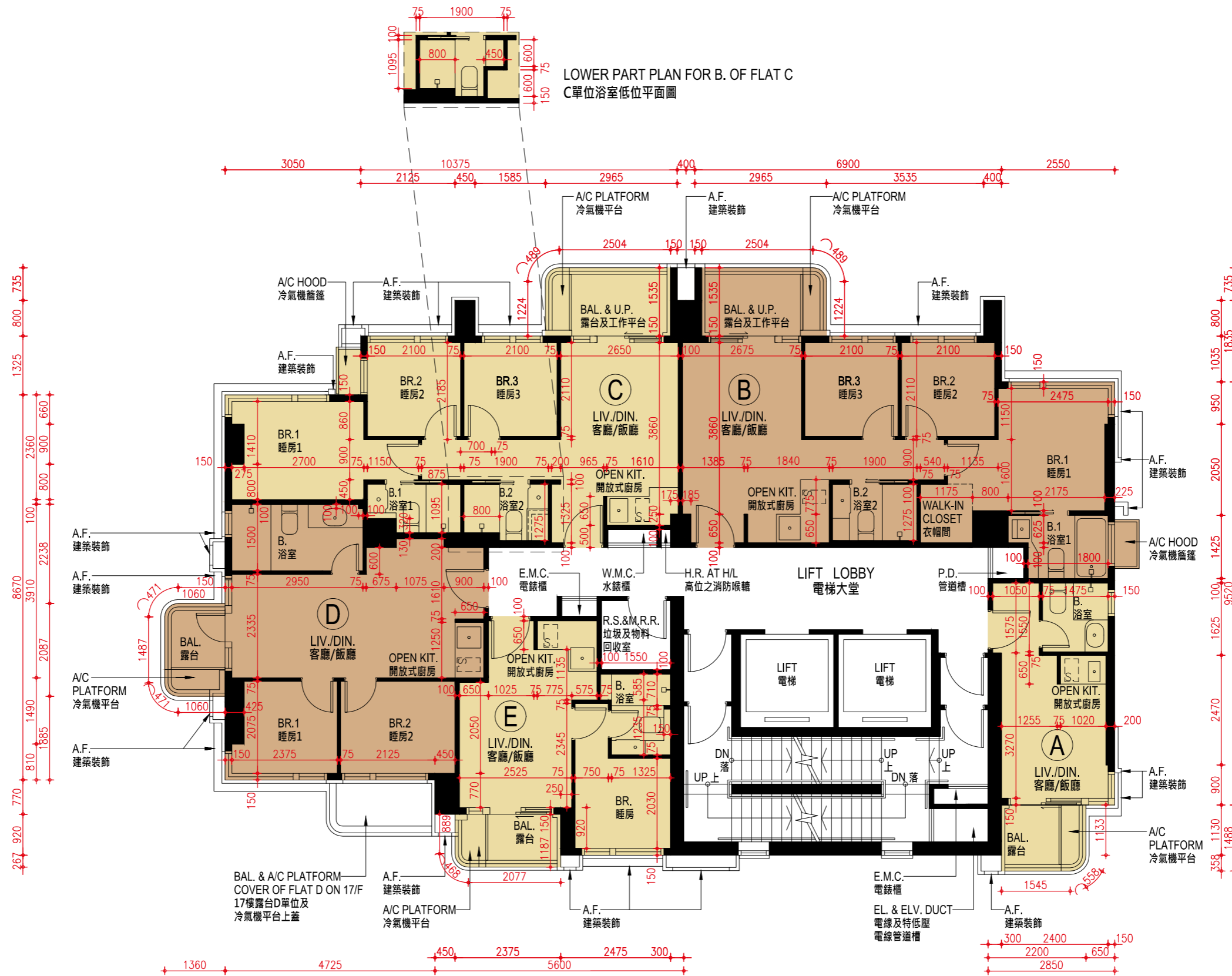
The internal areas of the residential properties on the upper floors will generally be slightly larger than those on the lower floors because of the reducing thickness of the structural walls on the upper floors. (Note: This statement required in Section 10(2)(e) in Part 1 of Schedule 1 of the Residential Properties (First-hand Sales) Ordinance (Cap.621) is not applicable to the residential properties in the Development.)

Notes:

There are areas which are common areas and facilities (“the said Common Areas and Facilities”) within the flat roofs of Flats C and D on this floor and that access to the said Common Areas and Facilities may require passage through the said Flat. For location of the said Common Areas and Facilities, please refer to the location of the “D.C.A.M.W.” shown on this Floor Plan. Pursuant to the DMC of the Development, the Manager of the Development has the power to enter with or without workmen at all reasonable times on prior written reasonable notice (except in the case of emergency) upon all and any parts of the Development including any Unit to exercise or carry out any of its powers or duties under the DMC, including without limitation to carry out necessary repairs to any part or parts of the Development or the Common Areas and Facilities or to abate any hazard or nuisance which does or may affect the Common Areas and Facilities or other Owners.

1. The dimensions in floor plans are all structural dimensions in millimeter.
2. There may be architectural features on external walls of some of the floors.
3. Common pipes exposed are located at/adjacent to balcony and/or flat roof and/or utility platform and/or air-conditioning platform and/or external wall of some residential units.
4. There are sunken slabs and/or ceiling bulkheads at living rooms/dining rooms, bedrooms, bathrooms, kitchens and open kitchens of some residential units for the air-conditioning system and/or mechanical and electrical services.
5. Balconies, utility platforms and air-conditioning platforms are non-enclosed areas.
6. Symbols of fittings shown on the floor plans, such as bathtubs, sink, water closets, sink counter, etc., are architectural symbols retrieved from the latest approved General Building Plans and are for general indication only.
7. Please refer to page 23 of this sales brochure for legend of the terms and abbreviation shown on the floor plan above.

18樓至22樓平面圖
18/F - 22/F Floor Plan



比例尺 SCALE: 0m (米) 5m (米)

18 樓至 22 樓平面圖
18/F - 22/F Floor Plan

樓層 Floor	單位 Flat	層與層之間的高度 (毫米) Floor-to-Floor Height (mm)	樓板 (不包括灰泥) 的厚度 (毫米) Thickness of Floor Slab (excluding plaster) (mm)
18 樓至 22 樓 18/F - 22/F	A	3150	150
	B	3150	150
	C	3150	150
	D	3150	150, 160, 175
	E	3150	160

因住宅物業的較高樓層的結構牆的厚度遞減，較高層的內部面積，一般比較低層的內部面積稍大。（註：此乃根據《一手住宅物業銷售條例》（第 621 章）附表 1 第 1 部第 10(2)(e) 條所規定的陳述並不適用於發展項目內的住宅物業。）

備註：

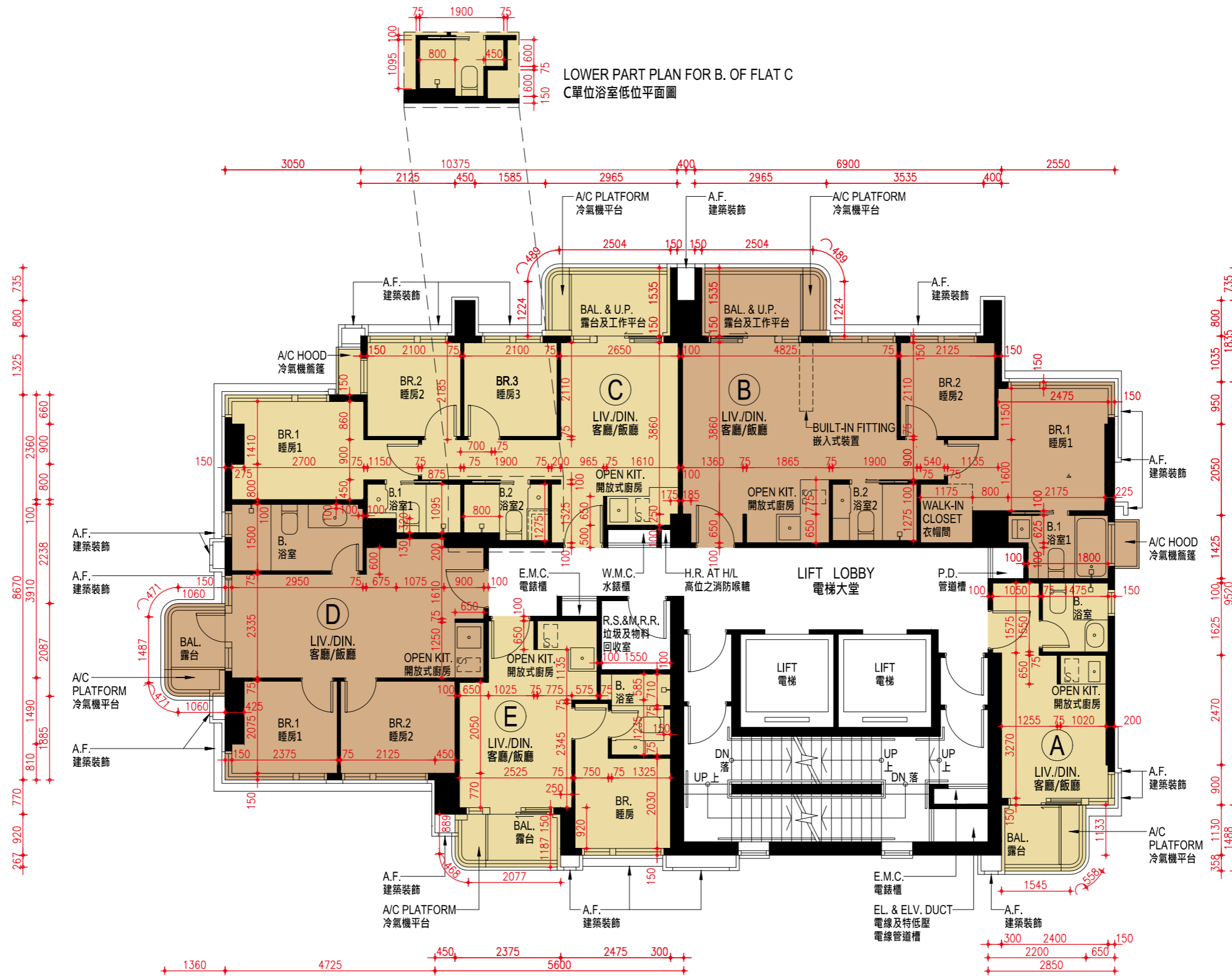
1. 平面圖所列之數字以毫米標示之建築結構呎吋。
2. 部分樓層外牆範圍設有建築裝飾。
3. 部分住宅單位的露台及 / 或平台及 / 或工作平台及 / 或冷氣機平台及 / 或外牆或附近設有外露之公用喉管。
4. 部分住宅單位客廳 / 飯廳、睡房、浴室、廚房及開放式廚房有跌級樓板及 / 或天花橫樑用以裝置冷氣系統及 / 或機電設備。
5. 露台、工作平台及冷氣機平台為不可封閉地方。
6. 樓面平面圖上所顯示的裝置符號，例如浴缸、洗滌盆、坐廁、洗滌盆櫃等乃摘自最新經批准的建築圖則，只作一般示意用途。
7. 以上平面圖中顯示之名詞及簡稱請參閱本售樓說明書第 23 頁。

The internal areas of the residential properties on the upper floors will generally be slightly larger than those on the lower floors because of the reducing thickness of the structural walls on the upper floors. (Note: This statement required in Section 10(2)(e) in Part 1 of Schedule 1 of the Residential Properties (First-hand Sales) Ordinance (Cap.621) is not applicable to the residential properties in the Development.)

Notes:

1. The dimensions in floor plans are all structural dimensions in millimeter.
2. There may be architectural features on external walls of some of the floors.
3. Common pipes exposed are located at/adjacent to balcony and/or flat roof and/or utility platform and/or air-conditioning platform and/or external wall of some residential units.
4. There are sunken slabs and/or ceiling bulkheads at living rooms/dining rooms, bedrooms, bathrooms, kitchens and open kitchens of some residential units for the air-conditioning system and/or mechanical and electrical services.
5. Balconies, utility platforms and air-conditioning platforms are non-enclosed areas.
6. Symbols of fittings shown on the floor plans, such as bathtubs, sink, water closets, sink counter, etc., are architectural symbols retrieved from the latest approved General Building Plans and are for general indication only.
7. Please refer to page 23 of this sales brochure for legend of the terms and abbreviation shown on the floor plan above.

23 樓平面圖
23/F Floor Plan



比例尺 SCALE: 0m (米) 5m (米)

23 樓平面圖
23/F Floor Plan

樓層 Floor	單位 Flat	層與層之間的高度 (毫米) Floor-to-Floor Height (mm)	樓板 (不包括灰泥) 的厚度 (毫米) Thickness of Floor Slab (excluding plaster) (mm)
23 樓 23/F	A	3150	150
	B	2800, 2950, 3150	150
	C	3150, 3350, 3450, 3500, 3550	150
	D	2800, 2850, 3100, 3150, 3350, 3500	150, 160, 175
	E	2750, 2800, 2850, 3050, 3100, 3150, 3200, 3450, 3500	160

因住宅物業的較高樓層的結構牆的厚度遞減，較高層的內部面積，一般比較低層的內部面積稍大。（註：此乃根據《一手住宅物業銷售條例》（第 621 章）附表 1 第 1 部第 10(2)(e) 條所規定的陳述並不適用於發展項目內的住宅物業。）

備註：

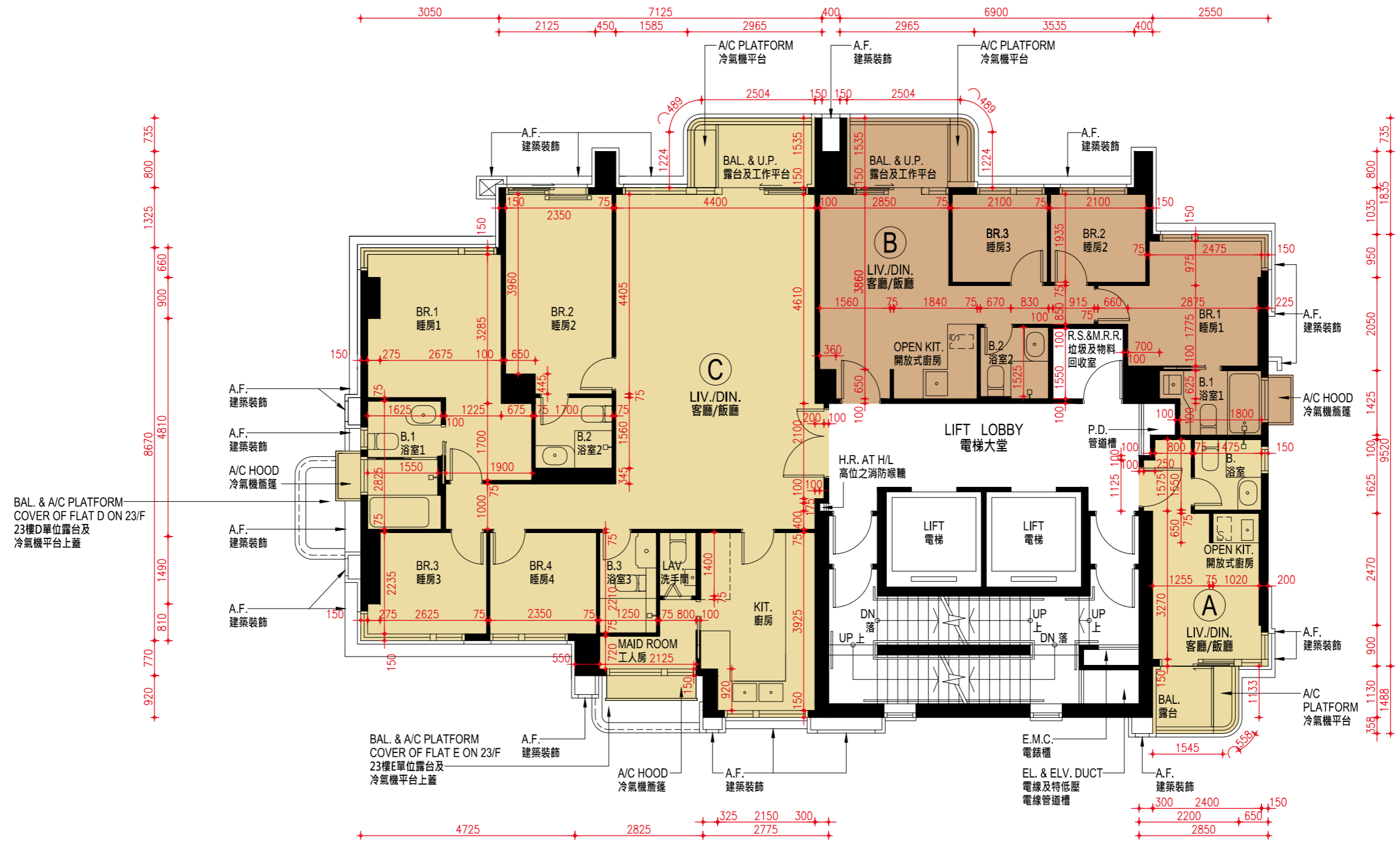
1. 平面圖所列之數字以毫米標示之建築結構呎吋。
2. 部分樓層外牆範圍設有建築裝飾。
3. 部分住宅單位的露台及 / 或平台及 / 或工作平台及 / 或冷氣機平台及 / 或外牆或附近設有外露之公用喉管。
4. 部分住宅單位客廳 / 飯廳、睡房、浴室、廚房及開放式廚房有跌級樓板及 / 或天花橫樑用以裝置冷氣系統及 / 或機電設備。
5. 露台、工作平台及冷氣機平台為不可封閉地方。
6. 樓面平面圖上所顯示的裝置符號，例如浴缸、洗滌盆、坐廁、洗滌盆櫃等乃摘自最新經批准的建築圖則，只作一般示意用途。
7. 以上平面圖中顯示之名詞及簡稱請參閱本售樓說明書第 23 頁。

The internal areas of the residential properties on the upper floors will generally be slightly larger than those on the lower floors because of the reducing thickness of the structural walls on the upper floors. (Note: This statement required in Section 10(2)(e) in Part 1 of Schedule 1 of the Residential Properties (First-hand Sales) Ordinance (Cap.621) is not applicable to the residential properties in the Development.)

Notes:

1. The dimensions in floor plans are all structural dimensions in millimeter.
2. There may be architectural features on external walls of some of the floors.
3. Common pipes exposed are located at/adjacent to balcony and/or flat roof and/or utility platform and/or air-conditioning platform and/or external wall of some residential units.
4. There are sunken slabs and/or ceiling bulkheads at living rooms/dining rooms, bedrooms, bathrooms, kitchens and open kitchens of some residential units for the air-conditioning system and/or mechanical and electrical services.
5. Balconies, utility platforms and air-conditioning platforms are non-enclosed areas.
6. Symbols of fittings shown on the floor plans, such as bathtubs, sink, water closets, sink counter, etc., are architectural symbols retrieved from the latest approved General Building Plans and are for general indication only.
7. Please refer to page 23 of this sales brochure for legend of the terms and abbreviation shown on the floor plan above.

25 樓平面圖
25/F Floor Plan



比例尺 SCALE: 0m (米) 5m (米)

25 樓平面圖
25/F Floor Plan

樓層 Floor	單位 Flat	層與層之間的高度 (毫米) Floor-to-Floor Height (mm)	樓板 (不包括灰泥) 的厚度 (毫米) Thickness of Floor Slab (excluding plaster) (mm)
25 樓 25/F	A	3150	150
	B	3150, 3500	150
	C	2750, 2800, 2850, 3050, 3150, 3500	150, 160

因住宅物業的較高樓層的結構牆的厚度遞減，較高層的內部面積，一般比較低層的內部面積稍大。（註：此乃根據《一手住宅物業銷售條例》（第 621 章）附表 1 第 1 部第 10(2)(e) 條所規定的陳述並不適用於發展項目內的住宅物業。）

備註：

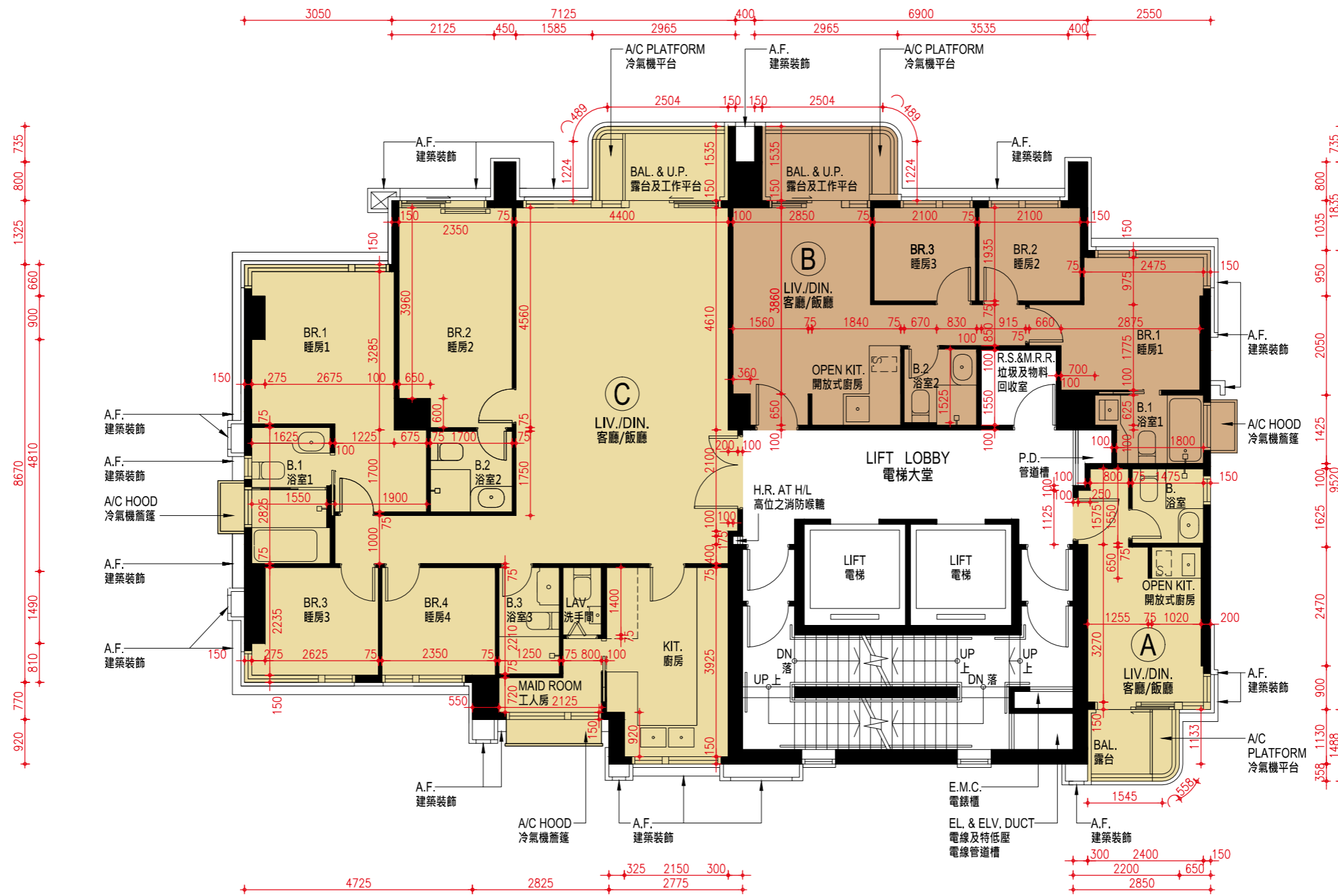
1. 平面圖所列之數字以毫米標示之建築結構呎吋。
2. 部分樓層外牆範圍設有建築裝飾。
3. 部分住宅單位的露台及 / 或平台及 / 或工作平台及 / 或冷氣機平台及 / 或外牆或附近設有外露之公用喉管。
4. 部分住宅單位客廳 / 飯廳、睡房、浴室、廚房及開放式廚房有跌級樓板及 / 或天花橫樑用以裝置冷氣系統及 / 或機電設備。
5. 露台、工作平台及冷氣機平台為不可封閉地方。
6. 樓面平面圖上所顯示的裝置符號，例如浴缸、洗滌盆、坐廁、洗滌盆櫃等乃摘自最新經批准的建築圖則，只作一般示意用途。
7. 以上平面圖中顯示之名詞及簡稱請參閱本售樓說明書第 23 頁。

The internal areas of the residential properties on the upper floors will generally be slightly larger than those on the lower floors because of the reducing thickness of the structural walls on the upper floors. (Note: This statement required in Section 10(2)(e) in Part 1 of Schedule 1 of the Residential Properties (First-hand Sales) Ordinance (Cap.621) is not applicable to the residential properties in the Development.)

Notes:

1. The dimensions in floor plans are all structural dimensions in millimeter.
2. There may be architectural features on external walls of some of the floors.
3. Common pipes exposed are located at/adjacent to balcony and/or flat roof and/or utility platform and/or air-conditioning platform and/or external wall of some residential units.
4. There are sunken slabs and/or ceiling bulkheads at living rooms/dining rooms, bedrooms, bathrooms, kitchens and open kitchens of some residential units for the air-conditioning system and/or mechanical and electrical services.
5. Balconies, utility platforms and air-conditioning platforms are non-enclosed areas.
6. Symbols of fittings shown on the floor plans, such as bathtubs, sink, water closets, sink counter, etc., are architectural symbols retrieved from the latest approved General Building Plans and are for general indication only.
7. Please refer to page 23 of this sales brochure for legend of the terms and abbreviation shown on the floor plan above.

26樓至27樓平面圖
26/F - 27/F Floor Plan



比例尺 SCALE: 0m (米) 5m (米)

26 樓至 27 樓平面圖
26/F - 27/F Floor Plan

樓層 Floor	單位 Flat	層與層之間的高度 (毫米) Floor-to-Floor Height (mm)	樓板 (不包括灰泥) 的厚度 (毫米) Thickness of Floor Slab (excluding plaster) (mm)
26 樓 26/F	A	3150	150
	B	3150	150
	C	3150	150, 160
27 樓 27/F	A	2800, 2900, 2950, 3150, 3200, 3250, 3300, 3450	150
	B	3150, 3350, 3450, 3500	150
	C	2800, 3150, 3250, 3500, 3550	150, 160

因住宅物業的較高樓層的結構牆的厚度遞減，較高層的內部面積，一般比較低層的內部面積稍大。(註：此乃根據《一手住宅物業銷售條例》(第 621 章)附表 1 第 1 部第 10(2)(e) 條所規定的陳述並不適用於發展項目內的住宅物業。)

備註：

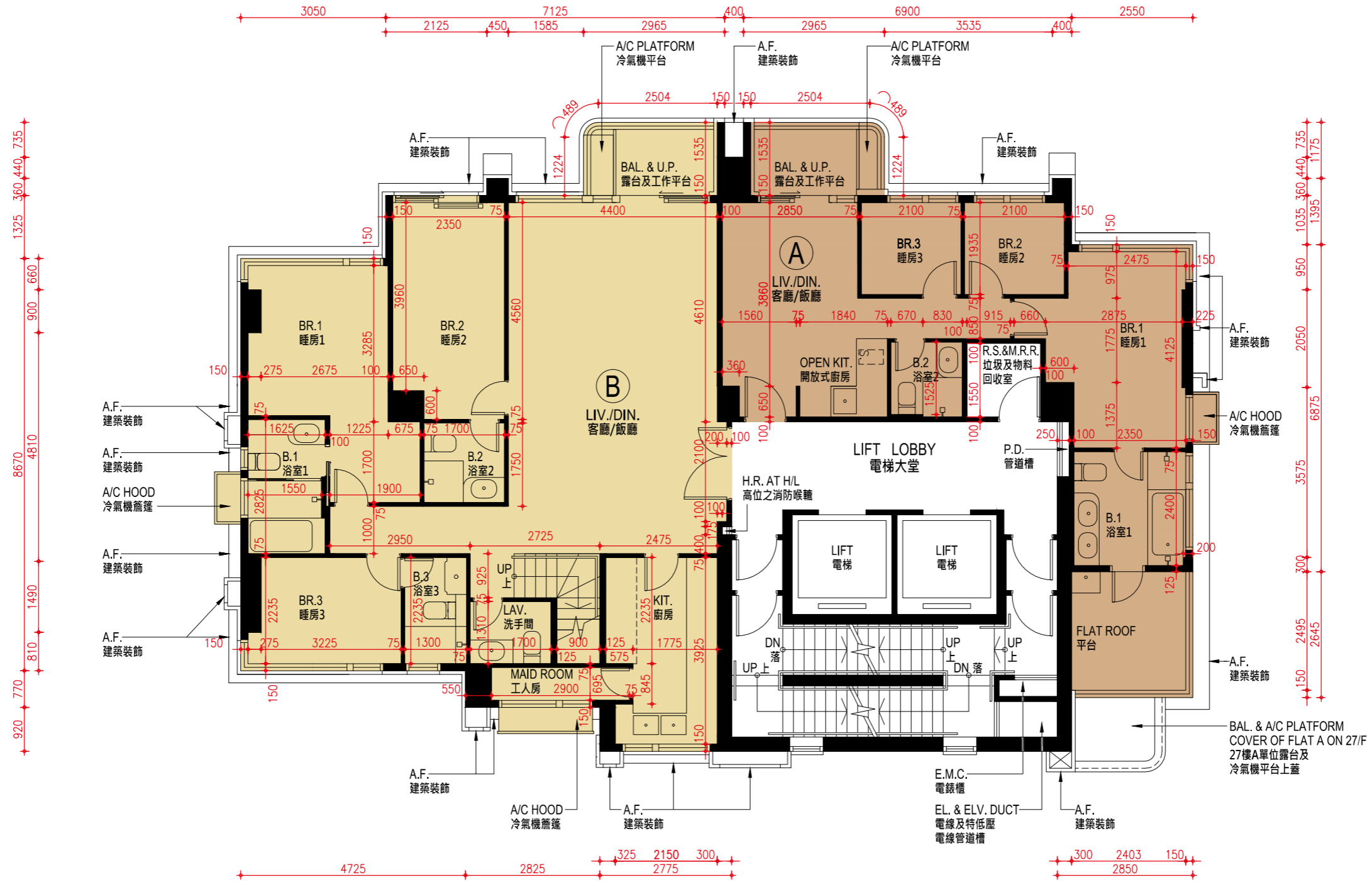
1. 平面圖所列之數字以毫米標示之建築結構呎吋。
2. 部分樓層外牆範圍設有建築裝飾。
3. 部分住宅單位的露台及 / 或平台及 / 或工作平台及 / 或冷氣機平台及 / 或外牆或附近設有外露之公用喉管。
4. 部分住宅單位客廳 / 飯廳、睡房、浴室、廚房及開放式廚房有跌級樓板及 / 或天花橫樑用以裝置冷氣系統及 / 或機電設備。
5. 露台、工作平台及冷氣機平台為不可封閉地方。
6. 樓面平面圖上所顯示的裝置符號，例如浴缸、洗滌盆、坐廁、洗滌盆櫃等乃摘自最新經批准的建築圖則，只作一般示意用途。
7. 以上平面圖中顯示之名詞及簡稱請參閱本售樓說明書第 23 頁。

The internal areas of the residential properties on the upper floors will generally be slightly larger than those on the lower floors because of the reducing thickness of the structural walls on the upper floors. (Note: This statement required in Section 10(2)(e) in Part 1 of Schedule 1 of the Residential Properties (First-hand Sales) Ordinance (Cap.621) is not applicable to the residential properties in the Development.)

Notes:

1. The dimensions in floor plans are all structural dimensions in millimeter.
2. There may be architectural features on external walls of some of the floors.
3. Common pipes exposed are located at/adjacent to balcony and/or flat roof and/or utility platform and/or air-conditioning platform and/or external wall of some residential units.
4. There are sunken slabs and/or ceiling bulkheads at living rooms/dining rooms, bedrooms, bathrooms, kitchens and open kitchens of some residential units for the air-conditioning system and/or mechanical and electrical services.
5. Balconies, utility platforms and air-conditioning platforms are non-enclosed areas.
6. Symbols of fittings shown on the floor plans, such as bathtubs, sink, water closets, sink counter, etc., are architectural symbols retrieved from the latest approved General Building Plans and are for general indication only.
7. Please refer to page 23 of this sales brochure for legend of the terms and abbreviation shown on the floor plan above.

28 樓平面圖
28/F Floor Plan



比例尺 SCALE: 0m (米) 5m (米)

28 樓平面圖
28/F Floor Plan

樓層 Floor	單位 Flat	層與層之間的高度（毫米） Floor-to-Floor Height (mm)	樓板（不包括灰泥）的厚度（毫米） Thickness of Floor Slab (excluding plaster) (mm)
28 樓 28/F	A	3150, 3350, 3450, 3500	150
	B	3150, 3450, 3500, 3550	150, 160, 175

因住宅物業的較高樓層的結構牆的厚度遞減，較高層的內部面積，一般比較低層的內部面積稍大。（註：此乃根據《一手住宅物業銷售條例》（第 621 章）附表 1 第 1 部第 10(2)(e) 條所規定的陳述並不適用於發展項目內的住宅物業。）

備註：

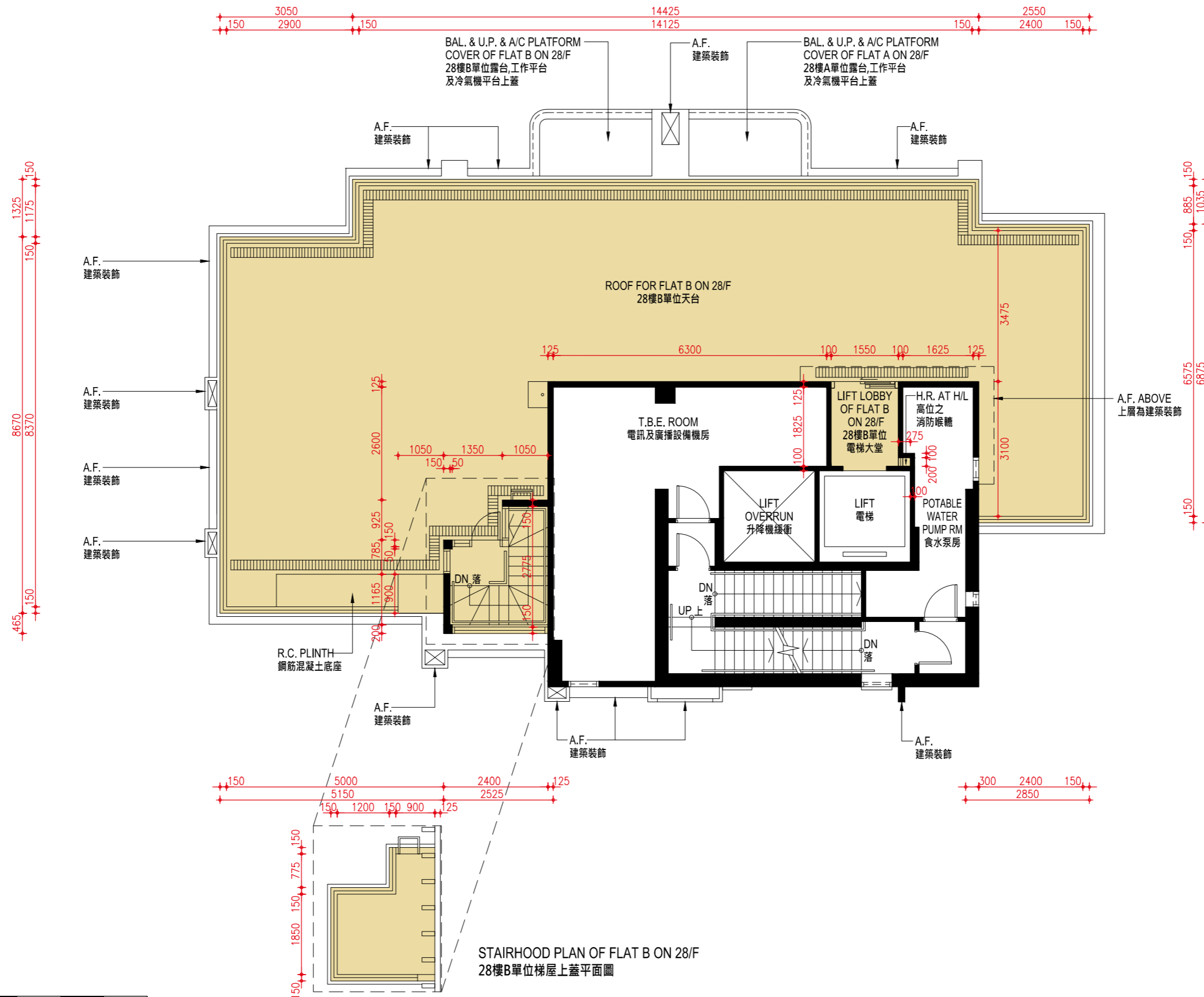
1. 平面圖所列之數字以毫米標示之建築結構呎吋。
2. 部分樓層外牆範圍設有建築裝飾。
3. 部分住宅單位的露台及 / 或平台及 / 或工作平台及 / 或冷氣機平台及 / 或外牆或附近設有外露之公用喉管。
4. 部分住宅單位客廳 / 飯廳、睡房、浴室、廚房及開放式廚房有跌級樓板及 / 或天花橫樑用以裝置冷氣系統及 / 或機電設備。
5. 露台、工作平台及冷氣機平台為不可封閉地方。
6. 樓面平面圖上所顯示的裝置符號，例如浴缸、洗滌盆、坐廁、洗滌盆櫃等乃摘自最新經批准的建築圖則，只作一般示意用途。
7. 以上平面圖中顯示之名詞及簡稱請參閱本售樓說明書第 23 頁。

The internal areas of the residential properties on the upper floors will generally be slightly larger than those on the lower floors because of the reducing thickness of the structural walls on the upper floors. (Note: This statement required in Section 10(2)(e) in Part 1 of Schedule 1 of the Residential Properties (First-hand Sales) Ordinance (Cap.621) is not applicable to the residential properties in the Development.)

Notes:

1. The dimensions in floor plans are all structural dimensions in millimeter.
2. There may be architectural features on external walls of some of the floors.
3. Common pipes exposed are located at/adjacent to balcony and/or flat roof and/or utility platform and/or air-conditioning platform and/or external wall of some residential units.
4. There are sunken slabs and/or ceiling bulkheads at living rooms/dining rooms, bedrooms, bathrooms, kitchens and open kitchens of some residential units for the air-conditioning system and/or mechanical and electrical services.
5. Balconies, utility platforms and air-conditioning platforms are non-enclosed areas.
6. Symbols of fittings shown on the floor plans, such as bathtubs, sink, water closets, sink counter, etc., are architectural symbols retrieved from the latest approved General Building Plans and are for general indication only.
7. Please refer to page 23 of this sales brochure for legend of the terms and abbreviation shown on the floor plan above.

天台平面圖
Roof Floor Plan



STAIRHOOD PLAN OF FLAT B ON 28/F
28樓B單位梯屋上蓋平面圖

比例尺 SCALE: 0m (米) 5m (米)

天台平面圖
Roof Floor Plan

樓層 Floor	單位 Flat	層與層之間的高度（毫米） Floor-to-Floor Height (mm)	樓板（不包括灰泥）的厚度（毫米） Thickness of Floor Slab (excluding plaster) (mm)
天台 Roof	B	不適用 Not Applicable	不適用 Not Applicable

因住宅物業的較高樓層的結構牆的厚度遞減，較高層的內部面積，一般比較低層的內部面積稍大。（註：此乃根據《一手住宅物業銷售條例》（第 621 章）附表 1 第 1 部第 10(2)(e) 條所規定的陳述並不適用於發展項目內的住宅物業。）

備註：

1. 平面圖所列之數字以毫米標示之建築結構呎吋。
2. 部分樓層外牆範圍設有建築裝飾。
3. 部分住宅單位的露台及 / 或平台及 / 或工作平台及 / 或冷氣機平台及 / 或外牆或附近設有外露之公用喉管。
4. 部分住宅單位客廳 / 飯廳、睡房、浴室、廚房及開放式廚房有跌級樓板及 / 或天花橫樑用以裝置冷氣系統及 / 或機電設備。
5. 露台、工作平台及冷氣機平台為不可封閉地方。
6. 樓面平面圖上所顯示的裝置符號，例如浴缸、洗滌盆、坐廁、洗滌盆櫃等乃摘自最新經批准的建築圖則，只作一般示意用途。
7. 以上平面圖中顯示之名詞及簡稱請參閱本售樓說明書第 23 頁。

The internal areas of the residential properties on the upper floors will generally be slightly larger than those on the lower floors because of the reducing thickness of the structural walls on the upper floors. (Note: This statement required in Section 10(2)(e) in Part 1 of Schedule 1 of the Residential Properties (First-hand Sales) Ordinance (Cap.621) is not applicable to the residential properties in the Development.)

Notes:

1. The dimensions in floor plans are all structural dimensions in millimeter.
2. There may be architectural features on external walls of some of the floors.
3. Common pipes exposed are located at/adjacent to balcony and/or flat roof and/or utility platform and/or air-conditioning platform and/or external wall of some residential units.
4. There are sunken slabs and/or ceiling bulkheads at living rooms/dining rooms, bedrooms, bathrooms, kitchens and open kitchens of some residential units for the air-conditioning system and/or mechanical and electrical services.
5. Balconies, utility platforms and air-conditioning platforms are non-enclosed areas.
6. Symbols of fittings shown on the floor plans, such as bathtubs, sink, water closets, sink counter, etc., are architectural symbols retrieved from the latest approved General Building Plans and are for general indication only.
7. Please refer to page 23 of this sales brochure for legend of the terms and abbreviation shown on the floor plan above.