

FLOOR PLANS OF RESIDENTIAL PROPERTIES IN THE PHASE 期數的住宅物業的樓面平面圖

LEGEND OF THE TERMS AND ABBREVIATIONS FOR FLOOR PLANS

樓面平面圖中所使用名詞及簡稱之圖例

| | | |
|---|--|---------------|
| A/C PLATFORM | = AIR-CONDITIONING PLATFORM | 冷氣機平台 |
| A/C PLATFORM ABOVE | = AIR-CONDITIONING PLATFORM ABOVE | 冷氣機平台置上 |
| ACOUSTIC FIN | = ACOUSTIC FIN | 隔聲簷 |
| ACOUSTIC BALCONY | = ACOUSTIC BALCONY | 減音露台 |
| A.D. | = AIR DUCT | 通風槽 |
| A.D. FOR R.S.M.R.R. / AIR DUCT FOR R.S. & M.R.R. | = AIR DUCT FOR REFUSE STORAGE AND MATERIAL RECOVERY ROOM | 通風槽只供垃圾及物料回收房 |
| ALUM. FEATURE | = ALUMINIUM FEATURE | 鋁質裝飾 |
| ALUM. FEATURE ABOVE | = ALUMINIUM FEATURE ABOVE | 鋁質裝飾置上 |
| ALUM. FEATURE AT H/L | = ALUMINIUM FEATURE AT HIGH LEVEL | 鋁質裝飾於高位 |
| ALUM. ARCH. FEATURE | = ALUMINIUM ARCHITECTURAL FEATURE | 鋁質建築裝飾 |
| ALUM. CLADDING | = ALUMINIUM CLADDING | 鋁質覆蓋層 |
| ALUM. COPING | = ALUMINIUM COPING | 鋁質蓋頂 |
| ALUM. GRILLE | = ALUMINIUM GRILLE | 鋁質格柵 |
| ARCH. FEATURE / ARCHITECTURAL FEATURE | = ARCHITECTURAL FEATURE | 建築裝飾 |
| ARCH. FEATURE ABOVE | = ARCHITECTURAL FEATURE ABOVE | 建築裝飾置上 |
| ARCH. FEATURE AT H/L / ARCHITECTURAL FEATURE AT H/L | = ARCHITECTURAL FEATURE AT HIGH LEVEL | 建築裝飾於高位 |
| BAL. | = BALCONY | 露台 |
| BALCONY ABOVE | = BALCONY ABOVE | 露台置上 |
| BATH 2 | = BATHROOM 2 | 浴室 2 |
| BATH 3 | = BATHROOM 3 | 浴室 3 |
| B.R. 2 / B.R.2 | = BEDROOM 2 | 睡房 2 |
| B.R. 3 / B.R.3 | = BEDROOM 3 | 睡房 3 |
| B.R. 4 | = BEDROOM 4 | 睡房 4 |
| BUILDING LINE ABOVE | = BUILDING LINE ABOVE | 建築物界線置上 |
| BUILDING LINE BELOW | = BUILDING LINE BELOW | 建築物界線置下 |

Remarks:

1. There may be architectural features on external walls of some of the floors.
2. Common pipes exposed and/ or enclosed in cladding are located at/ adjacent to balcony and/ or flat roof and/ or utility platform and/ or air-conditioning platform and/ or external wall of some residential units.
3. There are sunken slabs and/ or ceiling bulkheads and/ or false ceiling at living rooms, dining rooms, bedrooms, utility, corridors, bathrooms, store rooms, lavatories, open kitchens and kitchens of some residential units for the air-conditioning system and/ or M&E service. There are exposed pipes/ ductings for air-conditioning system and/ or M&E service within some store rooms.
4. Balconies and utility platforms are non-enclosed areas.
5. Symbols of fittings and fitments shown on the floor plans, such as bathtubs, sink, water closets, shower, sink counter, etc, are architectural symbols retrieved from the latest approved general building plans for general indication only.
6. For some residential units, the air-conditioning platform(s) outside the unit is/ are placed with split type air-conditioner (outdoor unit)(s) belonging to that unit and/ or other residential units.

附註:

1. 部份樓層外牆範圍設有建築裝飾。
2. 部份住宅單位的露台及/或平台及/或工作平台及/或冷氣機平台及/或外牆及/或附近設有外露及/或藏於覆蓋層之公用喉管。
3. 部份住宅單位客廳、飯廳、睡房、工作間、走廊、浴室、儲物房、洗手間、開放式廚房以及廚房有跌級樓板及/或天花假陣及/或假天花用以裝置冷氣系統及/或其他機電設備。部份儲物房內設有冷氣及/或機電設備之外露喉管/管道。
4. 露台及工作平台為不可封閉地方。
5. 樓面平面圖上所顯示的形象裝置符號，例如浴缸、洗滌盆、坐廁、淋浴間、洗滌盆櫃等乃摘自最新的經批准的建築圖則，只作一般性標誌。
6. 部份住宅單位外的冷氣機平台放置屬於其單位及/或其他住宅單位的一部或多部分體式冷氣機（室外機）。

FLOOR PLANS OF RESIDENTIAL PROPERTIES IN THE PHASE 期數的住宅物業的樓面平面圖

LEGEND OF THE TERMS AND ABBREVIATIONS FOR FLOOR PLANS

樓面平面圖中所使用名詞及簡稱之圖例

| | | |
|---|---|----------------|
| COMMON AREA | = COMMON AREA | 公用地方 |
| COMMON ROOF | = COMMON ROOF | 公用天台 |
| CORRIDOR | = CORRIDOR | 走廊 |
| COVER FOR BALCONY | = COVER FOR BALCONY | 露台上蓋 |
| COVER FOR COVERED WALKWAY | = COVER FOR COVERED WALKWAY | 有蓋行人道上蓋 |
| COVER FOR COVERED WALKWAY (GREENERY ON TOP) | = COVER FOR COVERED WALKWAY (GREENERY ON TOP) | 有蓋行人道上蓋 (綠化頂部) |
| COVER FOR STAIR | = COVER FOR STAIR | 樓梯上蓋 |
| COVER FOR U.P. | = COVER FOR UTILITY PLATFORM | 工作平台上蓋 |
| C.W. | = CURTAIN WALL | 幕牆 |
| DIN. | = DINING ROOM | 飯廳 |
| DOGHOUSE | = DOGHOUSE | 管道房 |
| DOOR WITH AUTO-CLOSE MECHANISM | = DOOR WITH AUTO-CLOSE MECHANISM | 具自動關閉系統的門 |
| DN. / DN | = DOWN | 落 |
| EL DUCT/ EL. DUCT | = ELECTRICAL DUCT | 電力槽 |
| EL. RM. | = ELECTRICAL ROOM | 電力房 |
| EL. & EMR/ EL & EMR | = ELECTRICAL AND ELECTRIC METER ROOM | 電力及電錶房 |
| ELV. | = EXTRA-LOW VOLTAGE | 特低電壓 |
| ELV. AT H/L | = EXTRA-LOW VOLTAGE AT HIGH LEVEL | 特低電壓於高位 |
| E.M.C./ EMC | = ELECTRIC METER CABINET | 電錶櫃 |
| E.M.R. | = ELECTRIC METER ROOM | 電錶房 |
| EXHAUST FAN RM. | = EXHAUST FAN ROOM | 排風風扇房 |
| FENCE WALL | = FENCE WALL | 圍牆 |
| FIREMAN'S LIFT LOBBY | = FIREMAN'S LIFT LOBBY | 消防員升降機大堂 |
| FLAT | = FLAT | 單位 |
| FLAT ROOF | = FLAT ROOF | 平台 |
| FLAT ROOF (FOR COMMON) | = FLAT ROOF (FOR COMMON) | 平台 (公用) |
| FLUSHING WATER PUMP ROOM/ RM. | = FLUSHING WATER PUMP ROOM | 沖廁水泵房 |
| GLASS CLADDING | = GLASS CLADDING | 玻璃覆蓋層 |
| H.R. | = HOSE REEL | 消防喉轆 |
| H.R. AT L/L | = HOSE REEL AT LOW LEVEL | 消防喉轆於低位 |
| INACCESSIBLE FLAT ROOF (COMMON) | = INACCESSIBLE FLAT ROOF (COMMON) | 不可通達的平台 (公用) |
| JACUZZI | = JACUZZI | 按摩池 |
| KIT. | = KITCHEN | 廚房 |

Remarks:

1. There may be architectural features on external walls of some of the floors.
2. Common pipes exposed and/ or enclosed in cladding are located at/ adjacent to balcony and/ or flat roof and/ or utility platform and/ or air-conditioning platform and/ or external wall of some residential units.
3. There are sunken slabs and/ or ceiling bulkheads and/ or false ceiling at living rooms, dining rooms, bedrooms, utility, corridors, bathrooms, store rooms, lavatories, open kitchens and kitchens of some residential units for the air-conditioning system and/ or M&E service. There are exposed pipes/ ductings for air-conditioning system and/ or M&E service within some store rooms.
4. Balconies and utility platforms are non-enclosed areas.
5. Symbols of fittings and fitments shown on the floor plans, such as bathtubs, sink, water closets, shower, sink counter, etc, are architectural symbols retrieved from the latest approved general building plans for general indication only.
6. For some residential units, the air-conditioning platform(s) outside the unit is/ are placed with split type air-conditioner (outdoor unit)(s) belonging to that unit and/ or other residential units.

附註:

1. 部份樓層外牆範圍設有建築裝飾。
2. 部份住宅單位的露台及/或平台及/或工作平台及/或冷氣機平台及/或外牆及/或附近設有外露及/或藏於覆蓋層之公用喉管。
3. 部份住宅單位客廳、飯廳、睡房、工作間、走廊、浴室、儲物房、洗手間、開放式廚房以及廚房有跌級樓板及/或天花假陣及/或假天花用以裝置冷氣系統及/或其他機電設備。部份儲物房內設有冷氣及/或機電設備之外露喉管/管道。
4. 露台及工作平台為不可封閉地方。
5. 樓面平面圖上所顯示的形象裝置符號，例如浴缸、洗滌盆、坐廁、淋浴間、洗滌盆櫃等乃摘自最新的經批准的建築圖則，只作一般性標誌。
6. 部份住宅單位外的冷氣機平台放置屬於其單位及/或其他住宅單位的一部或多部分體式冷氣機 (室外機)。

FLOOR PLANS OF RESIDENTIAL PROPERTIES IN THE PHASE 期數的住宅物業的樓面平面圖

LEGEND OF THE TERMS AND ABBREVIATIONS FOR FLOOR PLANS

樓面平面圖中所使用名詞及簡稱之圖例

| | | |
|-------------------------------|---|----------|
| LANTERN | = LANTERN | 燈 |
| LAV. | = LAVATORY | 洗手間 |
| LIV. | = LIVING ROOM | 客廳 |
| LIFT | = LIFT | 升降機 |
| LIFT OVER RUN | = LIFT OVER RUN | 升降機緩衝區 |
| LIFT LOBBY | = LIFT LOBBY | 升降機大堂 |
| LIFT MACHINE ROOM / RM. | = LIFT MACHINE ROOM | 升降機機房 |
| LOBBY | = LOBBY | 大堂 |
| M. BATH / M. BATH. | = MASTER BATHROOM | 主人浴室 |
| M.B.R. | = MASTER BEDROOM | 主人睡房 |
| METAL CANOPY | = METAL CANOPY | 金屬簷篷 |
| M.R. | = METAL RAILING | 金屬欄杆 |
| M.G. | = METAL GRILLE | 金屬格柵 |
| M.L. AT M/L | = METAL LOUVRE AT MEDIUM LEVEL | 金屬百葉於中位 |
| M.L. AT H/L | = METAL LOUVRE AT HIGH LEVEL | 金屬百葉於高位 |
| OPEN KIT. | = OPEN KITCHEN | 開放式廚房 |
| PERFORATED ALUM. PANEL | = PERFORATED ALUMINIUM PANEL | 鋁質穿孔板 |
| P./ PLANTER | = PLANTER | 花槽 |
| P.D. | = PIPE DUCT | 管道槽 |
| P.W./ PIPE WELL | = PIPE WELL | 管道井 |
| POTABLE WATER PUMP ROOM / RM. | = POTABLE WATER PUMP ROOM | 食水泵房 |
| POWDER ROOM / RM. | = POWDER ROOM | 化妝間 |
| ROOF | = ROOF | 天台 |
| R.C.C. | = REINFORCED CONCRETE CURB | 鋼筋混凝土譽 |
| RC FENCE WALL | = REINFORCED CONCRETE FENCE WALL | 鋼筋混凝土圍牆 |
| R.S. & M.R.R. | = REFUSE STORAGE AND MATERIAL RECOVERY ROOM | 垃圾及物料回收房 |
| S. | = STOVE | 煮食爐 |
| STORE | = STORE ROOM | 儲物房 |
| STONE CLADDING | = STONE CLADDING | 石料覆蓋層 |
| STONE FEATURE | = STONE FEATURE | 石料裝飾 |
| SINK | = SINK | 洗滌盆 |
| SUN SHADING DEVICE | = SUN SHADING DEVICE | 遮蔽裝置 |

Remarks:

1. There may be architectural features on external walls of some of the floors.
2. Common pipes exposed and/ or enclosed in cladding are located at/ adjacent to balcony and/ or flat roof and/ or utility platform and/ or air-conditioning platform and/ or external wall of some residential units.
3. There are sunken slabs and/ or ceiling bulkheads and/ or false ceiling at living rooms, dining rooms, bedrooms, utility, corridors, bathrooms, store rooms, lavatories, open kitchens and kitchens of some residential units for the air-conditioning system and/ or M&E service. There are exposed pipes/ ductings for air-conditioning system and/ or M&E service within some store rooms.
4. Balconies and utility platforms are non-enclosed areas.
5. Symbols of fittings and fitments shown on the floor plans, such as bathtubs, sink, water closets, shower, sink counter, etc, are architectural symbols retrieved from the latest approved general building plans for general indication only.
6. For some residential units, the air-conditioning platform(s) outside the unit is/ are placed with split type air-conditioner (outdoor unit)(s) belonging to that unit and/ or other residential units.



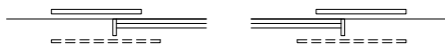


附註:

1. 部份樓層外牆範圍設有建築裝飾。
2. 部份住宅單位的露台及/或平台及/或工作平台及/或冷氣機平台及/或外牆及/或附近設有外露及/或藏於覆蓋層之公用喉管。
3. 部份住宅單位客廳、飯廳、睡房、工作間、走廊、浴室、儲物房、洗手間、開放式廚房以及廚房有跌級樓板及/或天花假陣及/或假天花用以裝置冷氣系統及/或其他機電設備。部份儲物房內設有冷氣及/或機電設備之外露喉管/管道。
4. 露台及工作平台為不可封閉地方。
5. 樓面平面圖上所顯示的形象裝置符號，例如浴缸、洗滌盆、坐廁、淋浴間、洗滌盆櫃等乃摘自最新的經批准的建築圖則，只作一般性標誌。
6. 部份住宅單位外的冷氣機平台放置屬於其單位及/或其他住宅單位的一部或多部分體式冷氣機（室外機）。

FLOOR PLANS OF RESIDENTIAL PROPERTIES IN THE PHASE 期數的住宅物業的樓面平面圖

LEGEND OF THE TERMS AND ABBREVIATIONS FOR FLOOR PLANS

樓面平面圖中所使用名詞及簡稱之圖例

| | | |
|---|---|----------------------------------|
| T.G.B. | = TEMPERED GLASS BALUSTRADE | 鋼化玻璃欄杆 |
| U.P. | = UTILITY PLATFORM | 工作平台 |
| U.P. ABOVE | = UTILITY PLATFORM ABOVE | 工作平台置上 |
| UP | = UP | 上 |
| UTILITY | = UTILITY | 工作間 |
| VOID | = VOID | 中空 |
| WALK-IN CLOSET | = WALK-IN CLOSET | 衣帽間 |
| W.M.C. / W.M.C | = WATER METER CABINET | 水錶櫃 |
| WATER METER RM. | = WATER METER ROOM | 水錶房 |
|  | = MAINTENANCE WINDOW | 維修窗戶 |
|  | = WINDOW WITH SLIDING PANEL BEHIND (ACOUSTIC WINDOW) | 背面裝設滑動嵌板的窗戶 (減音窗) |
|  | = SLIDING DOOR WITH SLIDING PANEL BEHIND (ACOUSTIC WINDOW) (FOR BALCONY ONLY) | 背面裝設滑動嵌板的趟門 (減音窗) (只供露台) |
|  | = WALL WITH MINIMUM 600mm WIDTH WITH MINIMUM FIRE RESISTANCE RATING -/30/30 | 不少於600毫米闊度和不可低於30分鐘完整性及隔熱性耐火效能的牆 |
|  | = SPLIT TYPE AIR-CONDITIONER (OUTDOOR UNIT) | 分體式冷氣機 (室外機) |

Remarks:

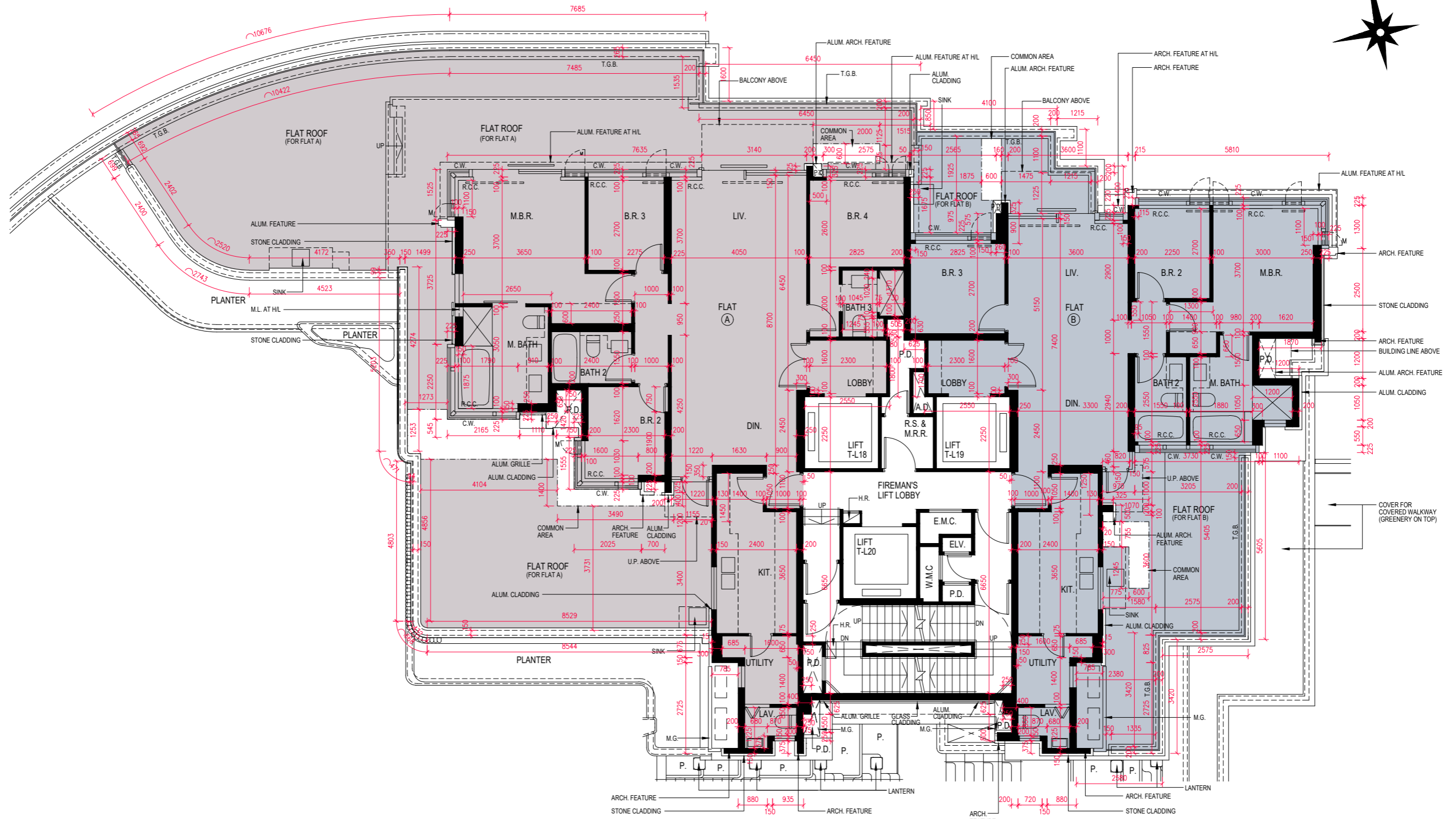
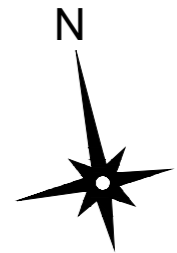
1. There may be architectural features on external walls of some of the floors.
2. Common pipes exposed and/ or enclosed in cladding are located at/ adjacent to balcony and/ or flat roof and/ or utility platform and/or air-conditioning platform and/ or external wall of some residential units.
3. There are sunken slabs and/or ceiling bulkheads and/ or false ceiling at living rooms, dining rooms, bedrooms, utility, corridors, bathrooms, store rooms, lavatories, open kitchens and kitchens of some residential units for the air-conditioning system and/ or M&E service. There are exposed pipes/ ductings for air-conditioning system and/ or M&E service within some store rooms.
4. Balconies and utility platforms are non-enclosed areas.
5. Symbols of fittings and fitments shown on the floor plans, such as bathtubs, sink, water closets, shower, sink counter, etc, are architectural symbols retrieved from the latest approved general building plans for general indication only.
6. For some residential units, the air-conditioning platform(s) outside the unit is/ are placed with split type air-conditioner (outdoor unit)(s) belonging to that unit and/or other residential units.

附註:

1. 部份樓層外牆範圍設有建築裝飾。
2. 部份住宅單位的露台及/或平台及/或工作平台及/或冷氣機平台及/或外牆及/或附近設有外露及/或藏於覆蓋層之公用喉管。
3. 部份住宅單位客廳、飯廳、睡房、工作間、走廊、浴室、儲物房、洗手間、開放式廚房以及廚房有跌級樓板及/或天花假陣及/或假天花用以裝置冷氣系統及/或其他機電設備。部份儲物房內設有冷氣及/或機電設備之外露喉管/管道。
4. 露台及工作平台為不可封閉地方。
5. 樓面平面圖上所顯示的形象裝置符號，例如浴缸、洗滌盆、坐廁、淋浴間、洗滌盆櫃等乃摘自最新的經批准的建築圖則，只作一般性標誌。
6. 部份住宅單位外的冷氣機平台放置屬於其單位及/或其他住宅單位的一部或多部分體式冷氣機 (室外機) 。

FLOOR PLANS OF RESIDENTIAL PROPERTIES IN THE PHASE 期數的住宅物業的樓面平面圖

TOWER 1 5/F PLAN 第1座 5樓平面圖



SCALE 比例 0 5 10M(米)

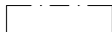
FLOOR PLANS OF RESIDENTIAL PROPERTIES IN THE PHASE 期數的住宅物業的樓面平面圖

| | Tower Name 大廈名稱 | Floor 樓層 | Flat 單位 | |
|---|-----------------|-----------|---------------------------------------|------------------------------|
| | | | A | B |
| Floor-to-floor height of each residential property (mm) 每個住宅物業的層與層之間的高度 (毫米) | Tower 1 第1座 | 5/F 5樓 | 2950, 3050, 3100, 3200, 3300, 3500 | 2950, 3050, 3100, 3200, 3300 |
| The thickness of the floor slabs (excluding plaster) of each residential property (mm) 每個住宅物業的樓板的厚度 (不包括灰泥) (毫米) | | | 125, 150, 200, 225 | 125, 150, 175, 225 |


The internal areas of the residential properties on the upper floors will generally be slightly larger than those on the lower floors because of the reducing thickness of the structural walls on the upper floors. (This does not apply to the residential properties in the Phase because the design of the Phase does not involve reducing thickness of structural walls of residential properties on the upper floors and hence internal areas of those residential properties will not be increased.)

因住宅物業的較高樓層的結構牆的厚度遞減，較高樓層的內部面積，一般比較低樓層的內部面積稍大。(不適用於期數內的住宅物業，因為期數的設計是不牽涉較高樓層的住宅物業的結構牆的厚度遞減。因此，該等住宅物業的內部面積不會增加。)

Remarks:

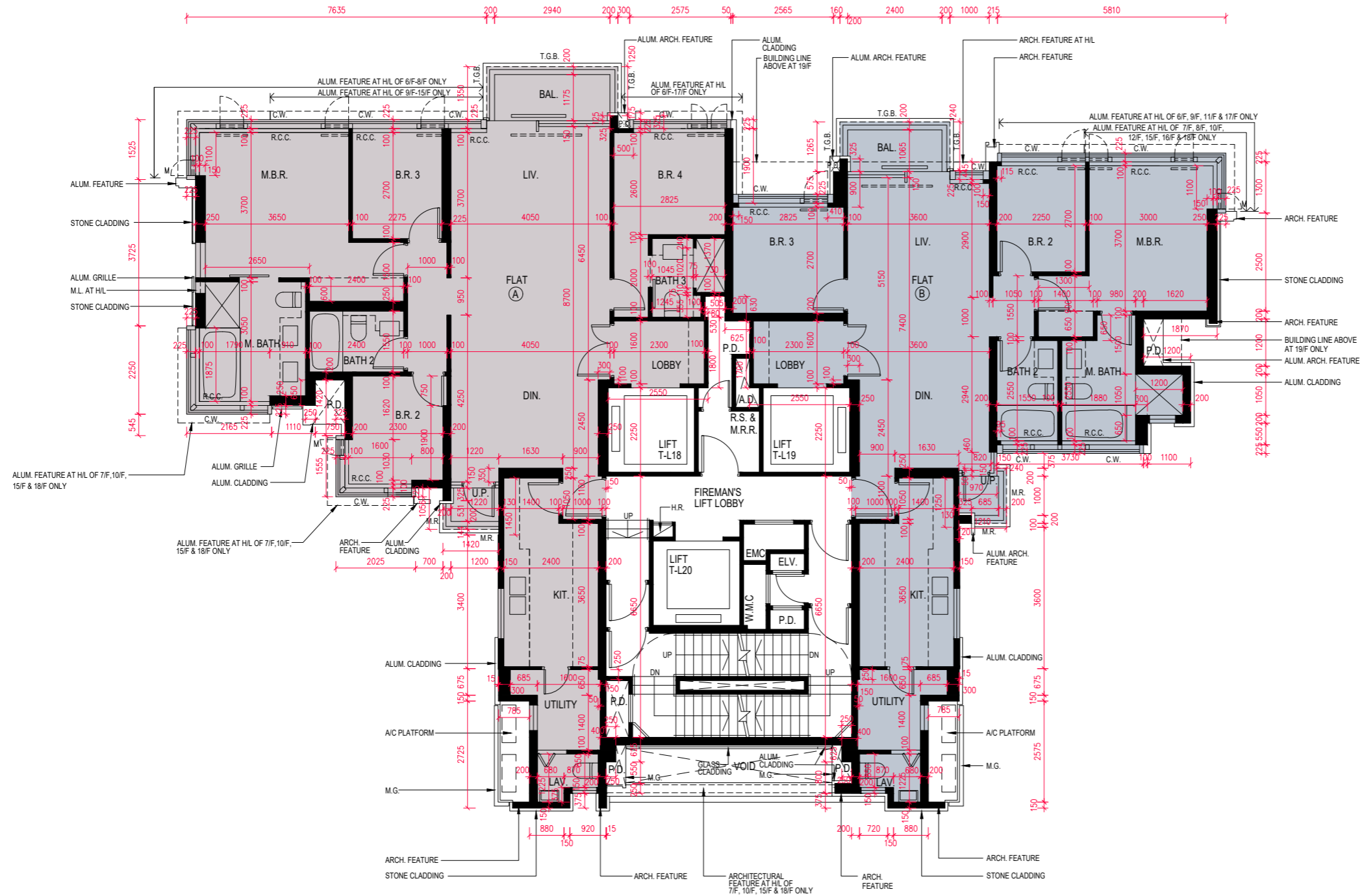
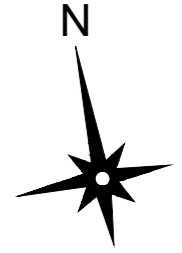
- The dimensions of floor plans are all structural dimensions in millimetre.
- Please refer to Pages AL001 to AL004 of this sales brochure for remarks, legend of the terms and abbreviations shown in the floor plan.
-  Dotted line in a residential unit with open kitchen delineates the extent of open kitchen area.

附註:

- 樓面平面圖所列之尺寸數字為毫米標示的建築結構尺寸。
- 樓面平面圖中顯示之附註、名詞及簡稱之圖例請參閱本售樓說明書第AL001至AL004頁。
-  設有開放式廚房的住宅單位內所顯示的虛線代表開放式廚房範圍。

FLOOR PLANS OF RESIDENTIAL PROPERTIES IN THE PHASE 期數的住宅物業的樓面平面圖

TOWER 1 第1座 6/F-12/F, 15/F-18/F PLAN
 6樓至12樓 · 15樓至18樓平面圖



SCALE 比例 0 5 10M(米)

FLOOR PLANS OF RESIDENTIAL PROPERTIES IN THE PHASE 期數的住宅物業的樓面平面圖

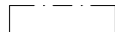
| | Tower Name 大廈名稱 | Floor 樓層 | Flat 單位 | |
|---|-----------------|--|------------------------|------------------------|
| | | | A | B |
| Floor-to-floor height of each residential property (mm) 每個住宅物業的層與層之間的高度 (毫米) | Tower 1 第1座 | 6/F - 12/F, 15/F - 17/F 6樓至12樓· 15樓至17樓 | 2950, 3050, 3200, 3300 | 2950, 3050, 3200, 3300 |
| The thickness of the floor slabs (excluding plaster) of each residential property (mm) 每個住宅物業的樓板的厚度 (不包括灰泥) (毫米) | | | 125, 150, 200, 225 | 125, 150, 175, 225 |

| | Tower Name 大廈名稱 | Floor 樓層 | Flat 單位 | |
|---|-----------------|-------------|-------------------------|--|
| | | | A | B |
| Floor-to-floor height of each residential property (mm) 每個住宅物業的層與層之間的高度 (毫米) | Tower 1 第1座 | 18/F 18樓 | 3250, 3350, 3400, 3600 | 3000, 3250, 3350, 3400 3450, 3500, 3600, 3800 |
| The thickness of the floor slabs (excluding plaster) of each residential property (mm) 每個住宅物業的樓板的厚度 (不包括灰泥) (毫米) | | | 125, 150, 175, 200, 225 | 125, 150, 175, 225 |

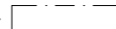
The internal areas of the residential properties on the upper floors will generally be slightly larger than those on the lower floors because of the reducing thickness of the structural walls on the upper floors. (This does not apply to the residential properties in the Phase because the design of the Phase does not involve reducing thickness of structural walls of residential properties on the upper floors and hence internal areas of those residential properties will not be increased.)

因住宅物業的較高樓層的結構牆的厚度遞減，較高樓層的內部面積，一般比較低樓層的內部面積稍大。(不適用於期數內的住宅物業，因為期數的設計是不牽涉較高樓層的住宅物業的結構牆的厚度遞減。因此，該等住宅物業的內部面積不會增加。)

Remarks:

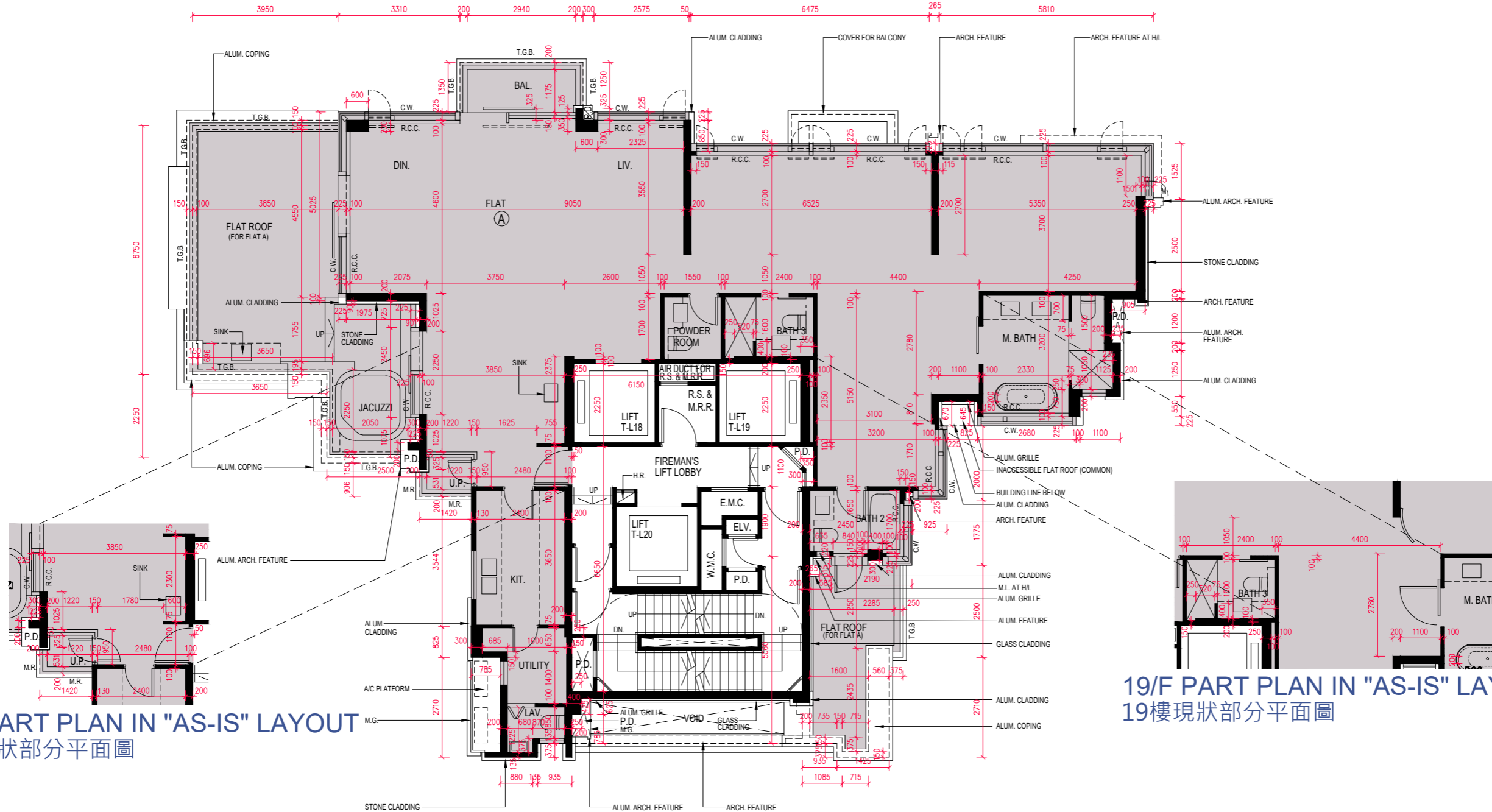
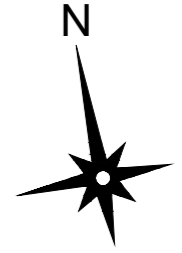
- The dimensions of floor plans are all structural dimensions in millimetre.
- Please refer to Pages AL001 to AL004 of this sales brochure for remarks, legend of the terms and abbreviations shown in the floor plan.
-  Dotted line in a residential unit with open kitchen delineates the extent of open kitchen area.

附註:

- 樓面平面圖所列之尺寸數字為毫米標示的建築結構尺寸。
- 樓面平面圖中顯示之附註、名詞及簡稱之圖例請參閱本售樓說明書第AL001至AL004頁。
-  設有開放式廚房的住宅單位內所顯示的虛線代表開放式廚房範圍。

FLOOR PLANS OF RESIDENTIAL PROPERTIES IN THE PHASE 期數的住宅物業的樓面平面圖

TOWER 1 19/F PLAN
第1座 19樓平面圖



19/F PART PLAN IN "AS-IS" LAYOUT
19樓現狀部分平面圖

19/F PART PLAN IN "AS-IS" LAYOUT
19樓現狀部分平面圖

SCALE 比例 0 5 10M(米)


FLOOR PLANS OF RESIDENTIAL PROPERTIES IN THE PHASE 期數的住宅物業的樓面平面圖

| | Tower Name 大廈名稱 | Floor 樓層 | Flat 單位 |
|---|-----------------|-------------|------------------------------------|
| | | | A |
| Floor-to-floor height of each residential property (mm) 每個住宅物業的層與層之間的高度 (毫米) | Tower 1 第1座 | 19/F 19樓 | 2900, 3150, 3250, 3350, 3400, 3500 |
| The thickness of the floor slabs (excluding plaster) of each residential property (mm) 每個住宅物業的樓板的厚度 (不包括灰泥) (毫米) | | | 125, 150, 175, 200, 500 |

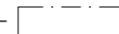
The internal areas of the residential properties on the upper floors will generally be slightly larger than those on the lower floors because of the reducing thickness of the structural walls on the upper floors. (This does not apply to the residential properties in the Phase because the design of the Phase does not involve reducing thickness of structural walls of residential properties on the upper floors and hence internal areas of those residential properties will not be increased.)

因住宅物業的較高樓層的結構牆的厚度遞減，較高樓層的內部面積，一般比較低樓層的內部面積稍大。(不適用於期數內的住宅物業，因為期數的設計是不牽涉較高樓層的住宅物業的結構牆的厚度遞減。因此，該等住宅物業的內部面積不會增加。)

Remarks:

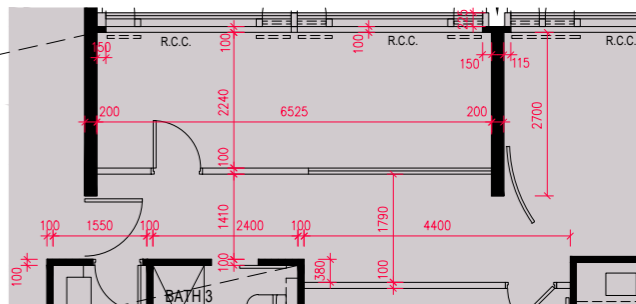
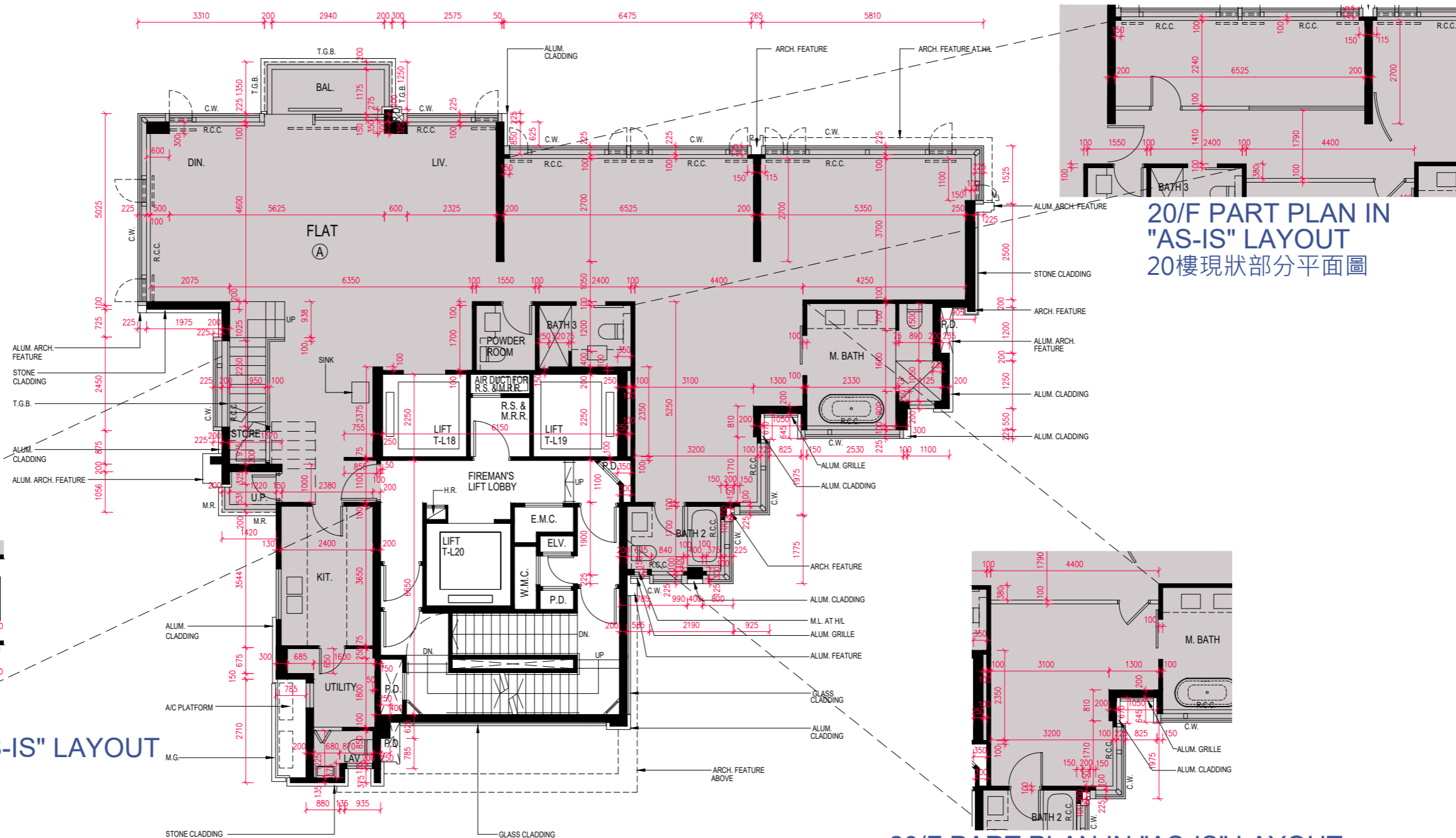
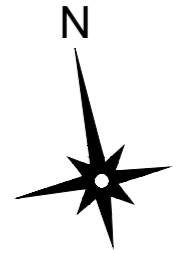
- The dimensions of floor plans are all structural dimensions in millimetre.
- Please refer to Pages AL001 to AL004 of this sales brochure for remarks, legend of the terms and abbreviations shown in the floor plan.
-  Dotted line in a residential unit with open kitchen delineates the extent of open kitchen area.
- Parts of the relevant residential property shown with part plan(s) in "as-is" layout in the floor plan have been altered by way of exempted works under the Buildings Ordinance and its subsidiary legislation.

附註:

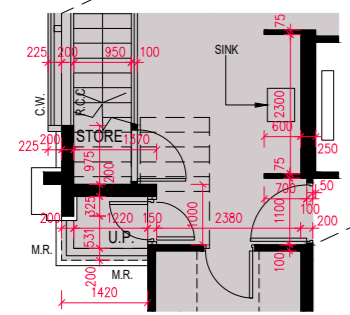
- 樓面平面圖所列之尺寸數字為毫米標示的建築結構尺寸。
- 樓面平面圖中顯示之附註、名詞及簡稱之圖例請參閱本售樓說明書第AL001至AL004頁。
-  設有開放式廚房的住宅單位內所顯示的虛線代表開放式廚房範圍。
- 樓面平面圖內以現狀部分平面圖顯示的相關住宅物業的一部分已施行《建築物條例》及其附屬條例下的豁免工程。

FLOOR PLANS OF RESIDENTIAL PROPERTIES IN THE PHASE 期數的住宅物業的樓面平面圖

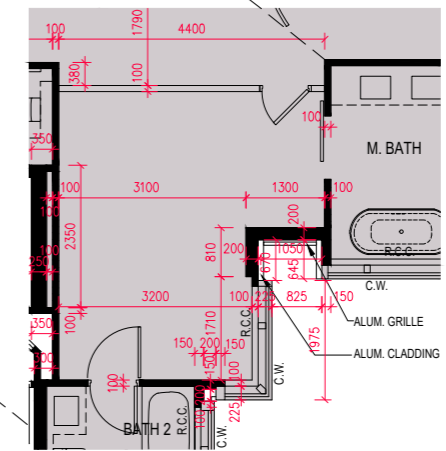
TOWER 1 20/F PLAN
第1座 20樓平面圖



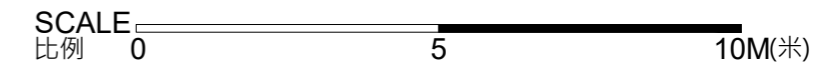
20/F PART PLAN IN "AS-IS" LAYOUT
20樓現狀部分平面圖



20/F PART PLAN IN "AS-IS" LAYOUT
20樓現狀部分平面圖



20/F PART PLAN IN "AS-IS" LAYOUT
20樓現狀部分平面圖



FLOOR PLANS OF RESIDENTIAL PROPERTIES IN THE PHASE 期數的住宅物業的樓面平面圖

| | Tower Name 大廈名稱 | Floor 樓層 | Flat 單位 |
|---|-----------------|-------------|------------------------------|
| | | | A |
| Floor-to-floor height of each residential property (mm) 每個住宅物業的層與層之間的高度 (毫米) | Tower 1 第1座 | 20/F 20樓 | 3500, 3825 |
| The thickness of the floor slabs (excluding plaster) of each residential property (mm) 每個住宅物業的樓板的厚度 (不包括灰泥) (毫米) | | | 125, 150, 175, 200, 475, 600 |

The internal areas of the residential properties on the upper floors will generally be slightly larger than those on the lower floors because of the reducing thickness of the structural walls on the upper floors. (This does not apply to the residential properties in the Phase because the design of the Phase does not involve reducing thickness of structural walls of residential properties on the upper floors and hence internal areas of those residential properties will not be increased.)

因住宅物業的較高樓層的結構牆的厚度遞減，較高樓層的內部面積，一般比較低樓層的內部面積稍大。(不適用於期數內的住宅物業，因為期數的設計是不牽涉較高樓層的住宅物業的結構牆的厚度遞減。因此，該等住宅物業的內部面積不會增加。)

Remarks:

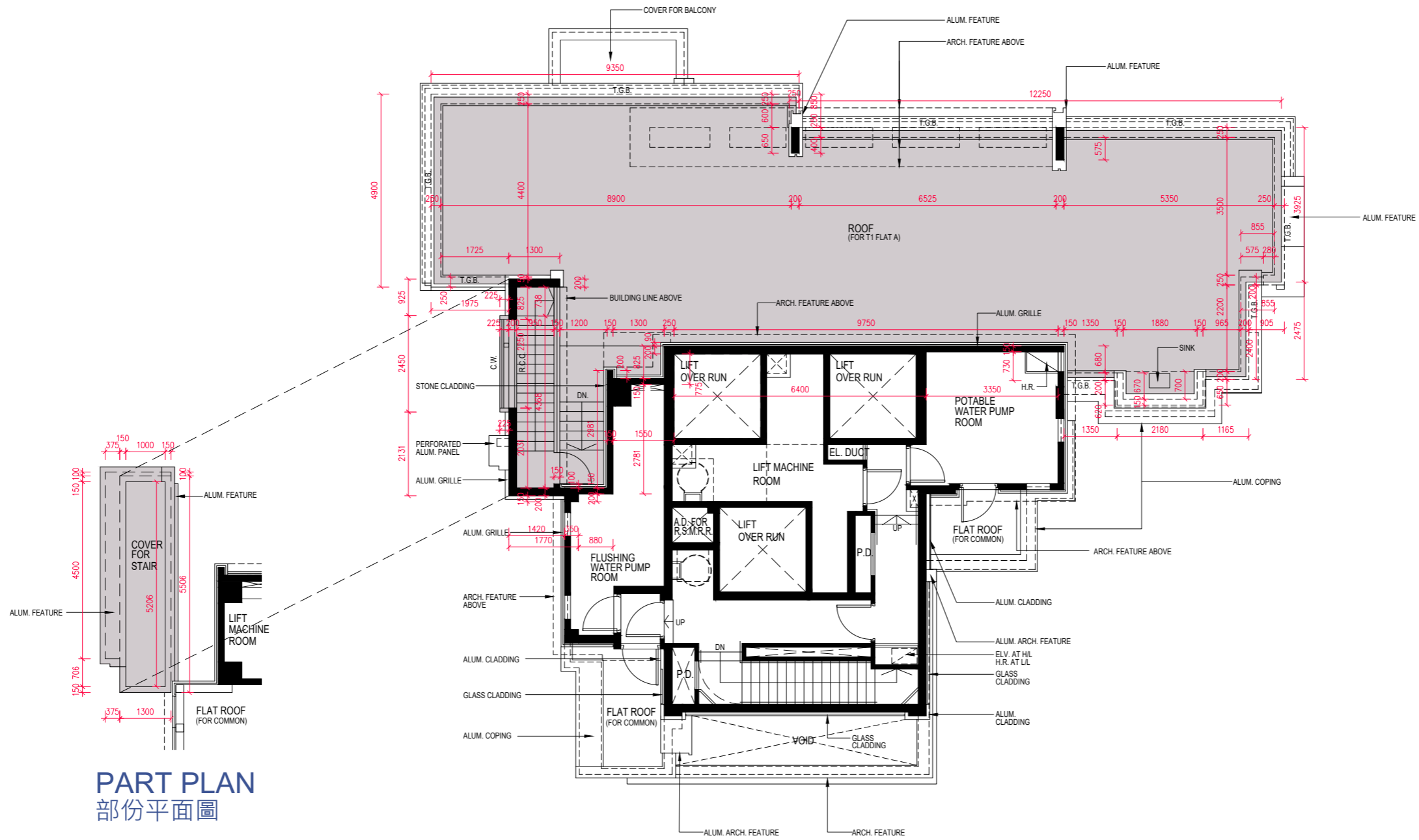
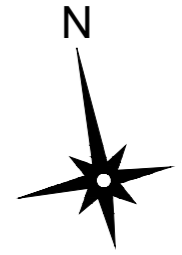
- The dimensions of floor plans are all structural dimensions in millimetre.
- Please refer to Pages AL001 to AL004 of this sales brochure for remarks, legend of the terms and abbreviations shown in the floor plan.
- [] Dotted line in a residential unit with open kitchen delineates the extent of open kitchen area.
- Parts of the relevant residential property shown with part plan(s) in "as-is" layout in the floor plan have been altered by way of exempted works under the Buildings Ordinance and its subsidiary legislation.

附註:

- 樓面平面圖所列之尺寸數字為毫米標示的建築結構尺寸。
- 樓面平面圖中顯示之附註、名詞及簡稱之圖例請參閱本售樓說明書第AL001至AL004頁。
- [] 設有開放式廚房的住宅單位內所顯示的虛線代表開放式廚房範圍。
- 樓面平面圖內以現狀部分平面圖顯示的相關住宅物業的一部分已施行《建築物條例》及其附屬條例下的豁免工程。

FLOOR PLANS OF RESIDENTIAL PROPERTIES IN THE PHASE 期數的住宅物業的樓面平面圖

TOWER 1 ROOF PLAN 第1座 天台平面圖



PART PLAN
部份平面圖

SCALE 比例 0 5 10M(米)

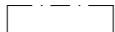
FLOOR PLANS OF RESIDENTIAL PROPERTIES IN THE PHASE 期數的住宅物業的樓面平面圖

| | Tower Name 大廈名稱 | Floor 樓層 | Flat 單位 |
|---|-----------------|------------|------------|
| | | | A |
| Floor-to-floor height of each residential property (mm) 每個住宅物業的層與層之間的高度 (毫米) | Tower 1 第1座 | ROOF 天台 | N/A 不適用 |
| The thickness of the floor slabs (excluding plaster) of each residential property (mm) 每個住宅物業的樓板的厚度 (不包括灰泥) (毫米) | | | N/A 不適用 |


The internal areas of the residential properties on the upper floors will generally be slightly larger than those on the lower floors because of the reducing thickness of the structural walls on the upper floors. (This does not apply to the residential properties in the Phase because the design of the Phase does not involve reducing thickness of structural walls of residential properties on the upper floors and hence internal areas of those residential properties will not be increased.)

因住宅物業的較高樓層的結構牆的厚度遞減，較高樓層的內部面積，一般比較低樓層的內部面積稍大。(不適用於期數內的住宅物業，因為期數的設計是不牽涉較高樓層的住宅物業的結構牆的厚度遞減。因此，該等住宅物業的內部面積不會增加。)

Remarks:

- The dimensions of floor plans are all structural dimensions in millimetre.
- Please refer to Pages AL001 to AL004 of this sales brochure for remarks, legend of the terms and abbreviations shown in the floor plan.
-  Dotted line in a residential unit with open kitchen delineates the extent of open kitchen area.

附註:

- 樓面平面圖所列之尺寸數字為毫米標示的建築結構尺寸。
- 樓面平面圖中顯示之附註、名詞及簡稱之圖例請參閱本售樓說明書第AL001至AL004頁。
-  設有開放式廚房的住宅單位內所顯示的虛線代表開放式廚房範圍。

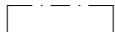
FLOOR PLANS OF RESIDENTIAL PROPERTIES IN THE PHASE 期數的住宅物業的樓面平面圖

| | Tower Name 大廈名稱 | Floor 樓層 | Flat 單位 | |
|---|-----------------|-----------|------------------------|------------------------------|
| | | | A | B |
| Floor-to-floor height of each residential property (mm) 每個住宅物業的層與層之間的高度 (毫米) | Tower 2 第2座 | 5/F 5樓 | 2950, 3050, 3200, 3300 | 2950, 3050, 3100, 3200, 3300 |
| The thickness of the floor slabs (excluding plaster) of each residential property (mm) 每個住宅物業的樓板的厚度 (不包括灰泥) (毫米) | | | 125, 150, 200, 225 | 125, 150, 175, 225 |

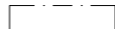
The internal areas of the residential properties on the upper floors will generally be slightly larger than those on the lower floors because of the reducing thickness of the structural walls on the upper floors. (This does not apply to the residential properties in the Phase because the design of the Phase does not involve reducing thickness of structural walls of residential properties on the upper floors and hence internal areas of those residential properties will not be increased.)

因住宅物業的較高樓層的結構牆的厚度遞減，較高樓層的內部面積，一般比較低樓層的內部面積稍大。(不適用於期數內的住宅物業，因為期數的設計是不牽涉較高樓層的住宅物業的結構牆的厚度遞減。因此，該等住宅物業的內部面積不會增加。)

Remarks:

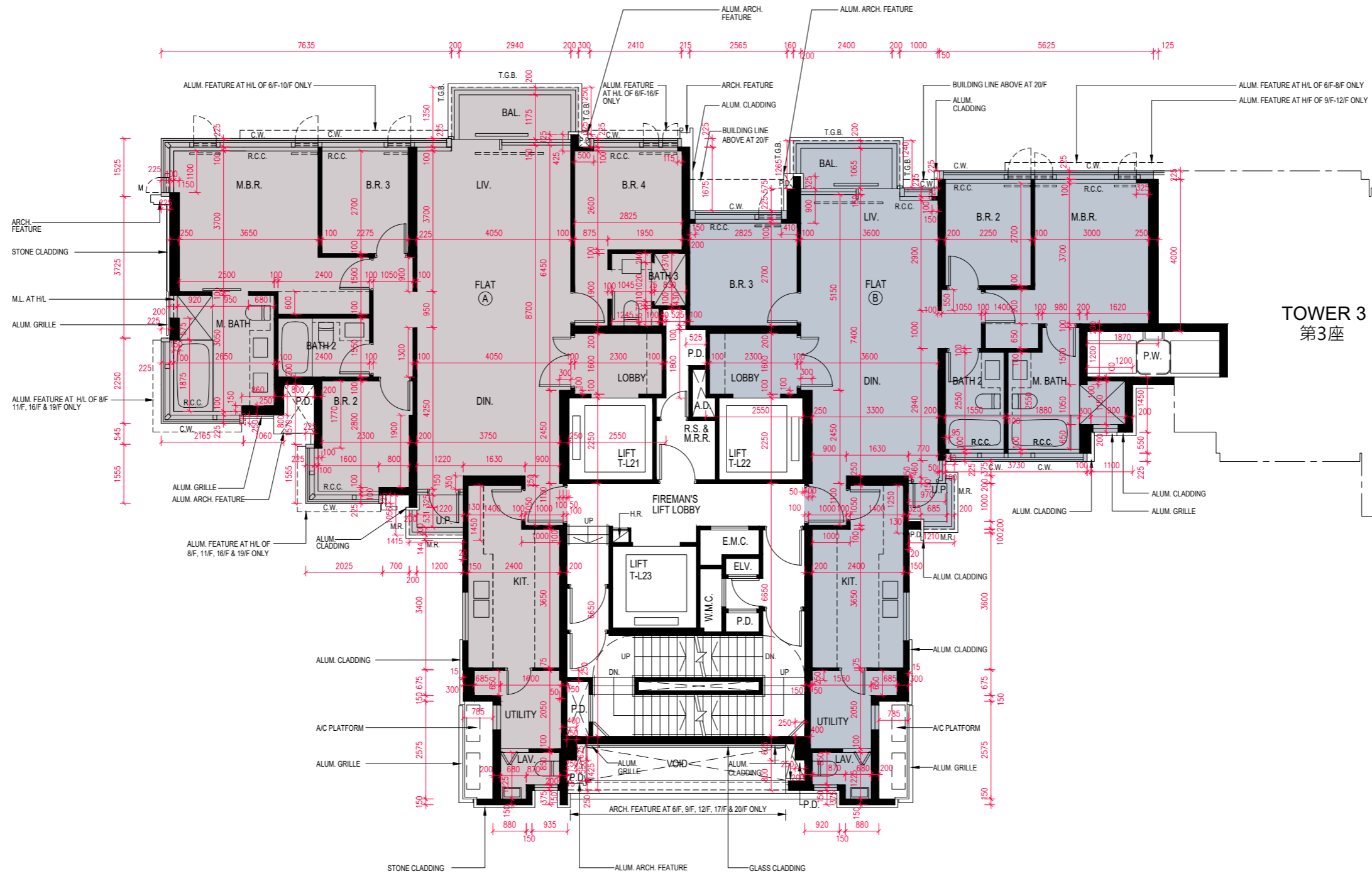
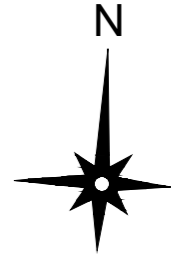
- The dimensions of floor plans are all structural dimensions in millimetre.
- Please refer to Pages AL001 to AL004 of this sales brochure for remarks, legend of the terms and abbreviations shown in the floor plan.
-  Dotted line in a residential unit with open kitchen delineates the extent of open kitchen area.

附註:

- 樓面平面圖所列之尺寸數字為毫米標示的建築結構尺寸。
- 樓面平面圖中顯示之附註、名詞及簡稱之圖例請參閱本售樓說明書第AL001至AL004頁。
-  設有開放式廚房的住宅單位內所顯示的虛線代表開放式廚房範圍。

FLOOR PLANS OF RESIDENTIAL PROPERTIES IN THE PHASE 期數的住宅物業的樓面平面圖

TOWER 2 6/F-12/F, 15/F-19/F PLAN
 第2座 6樓至12樓，15樓至19樓平面圖



TOWER 3
 第3座

SCALE 比例 0 5 10M(米)

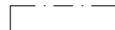
FLOOR PLANS OF RESIDENTIAL PROPERTIES IN THE PHASE 期數的住宅物業的樓面平面圖

| | Tower Name 大廈名稱 | Floor 樓層 | Flat 單位 | |
|---|-----------------|--|-------------------------|--|
| | | | A | B |
| Floor-to-floor height of each residential property (mm) 每個住宅物業的層與層之間的高度 (毫米) | Tower 2 第2座 | 6/F - 12/F, 15/F - 18/F 6樓至12樓· 15樓至18樓 | 2950, 3050, 3200, 3300 | 2950, 3050, 3200, 3300 |
| The thickness of the floor slabs (excluding plaster) of each residential property (mm) 每個住宅物業的樓板的厚度 (不包括灰泥) (毫米) | | | 125, 150, 200, 225 | 125, 150, 175, 225 |
| | Tower Name 大廈名稱 | Floor 樓層 | Flat 單位 | |
| | | | A | B |
| Floor-to-floor height of each residential property (mm) 每個住宅物業的層與層之間的高度 (毫米) | Tower 2 第2座 | 19/F 19樓 | 3150, 3250, 3300, 3500 | 2900, 3150, 3250, 3300 3350, 3400, 3500, 3700 |
| The thickness of the floor slabs (excluding plaster) of each residential property (mm) 每個住宅物業的樓板的厚度 (不包括灰泥) (毫米) | | | 125, 150, 175, 200, 225 | 125, 150, 175, 225 |

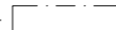
The internal areas of the residential properties on the upper floors will generally be slightly larger than those on the lower floors because of the reducing thickness of the structural walls on the upper floors. (This does not apply to the residential properties in the Phase because the design of the Phase does not involve reducing thickness of structural walls of residential properties on the upper floors and hence internal areas of those residential properties will not be increased.)

因住宅物業的較高樓層的結構牆的厚度遞減，較高樓層的內部面積，一般比較低樓層的內部面積稍大。(不適用於期數內的住宅物業，因為期數的設計是不牽涉較高樓層的住宅物業的結構牆的厚度遞減。因此，該等住宅物業的內部面積不會增加。)

Remarks:

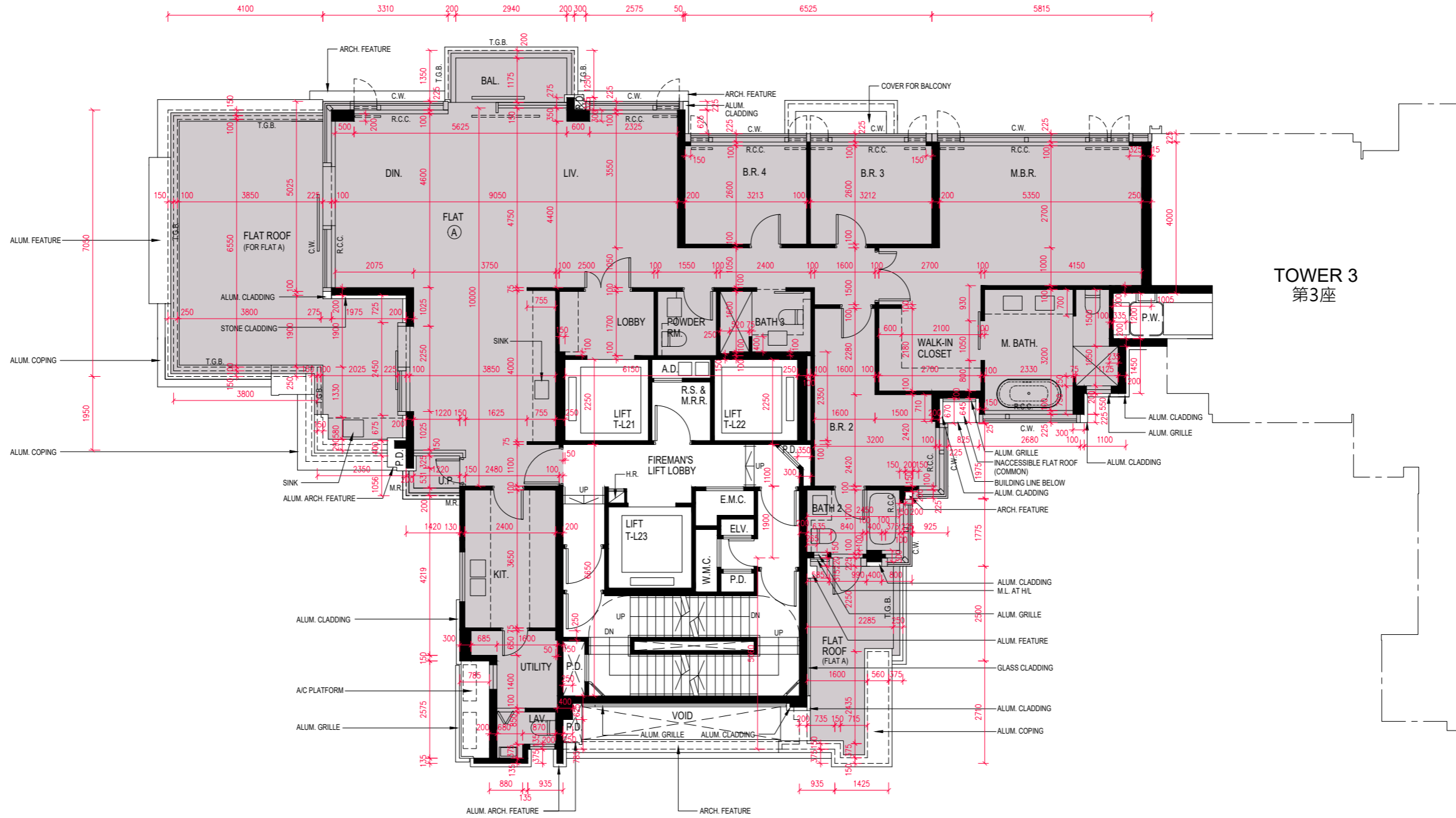
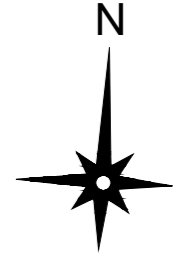
- The dimensions of floor plans are all structural dimensions in millimetre.
- Please refer to Pages AL001 to AL004 of this sales brochure for remarks, legend of the terms and abbreviations shown in the floor plan.
-  Dotted line in a residential unit with open kitchen delineates the extent of open kitchen area.

附註:

- 樓面平面圖所列之尺寸數字為毫米標示的建築結構尺寸。
- 樓面平面圖中顯示之附註、名詞及簡稱之圖例請參閱本售樓說明書第AL001至AL004頁。
-  設有開放式廚房的住宅單位內所顯示的虛線代表開放式廚房範圍。

FLOOR PLANS OF RESIDENTIAL PROPERTIES IN THE PHASE 期數的住宅物業的樓面平面圖

TOWER 2 20/F PLAN
第2座 20樓平面圖



SCALE 比例 0 5 10M(米)

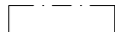
FLOOR PLANS OF RESIDENTIAL PROPERTIES IN THE PHASE 期數的住宅物業的樓面平面圖

| | Tower Name 大廈名稱 | Floor 樓層 | Flat 單位 |
|---|-----------------|-------------|------------------------------------|
| | | | A |
| Floor-to-floor height of each residential property (mm) 每個住宅物業的層與層之間的高度 (毫米) | Tower 2 第2座 | 20/F 20樓 | 2900, 3150, 3250, 3350, 3400, 3500 |
| The thickness of the floor slabs (excluding plaster) of each residential property (mm) 每個住宅物業的樓板的厚度 (不包括灰泥) (毫米) | | | 125, 150, 175, 200, 500 |

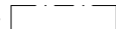
The internal areas of the residential properties on the upper floors will generally be slightly larger than those on the lower floors because of the reducing thickness of the structural walls on the upper floors. (This does not apply to the residential properties in the Phase because the design of the Phase does not involve reducing thickness of structural walls of residential properties on the upper floors and hence internal areas of those residential properties will not be increased.)

因住宅物業的較高樓層的結構牆的厚度遞減，較高樓層的內部面積，一般比較低樓層的內部面積稍大。(不適用於期數內的住宅物業，因為期數的設計是不牽涉較高樓層的住宅物業的結構牆的厚度遞減。因此，該等住宅物業的內部面積不會增加。)

Remarks:

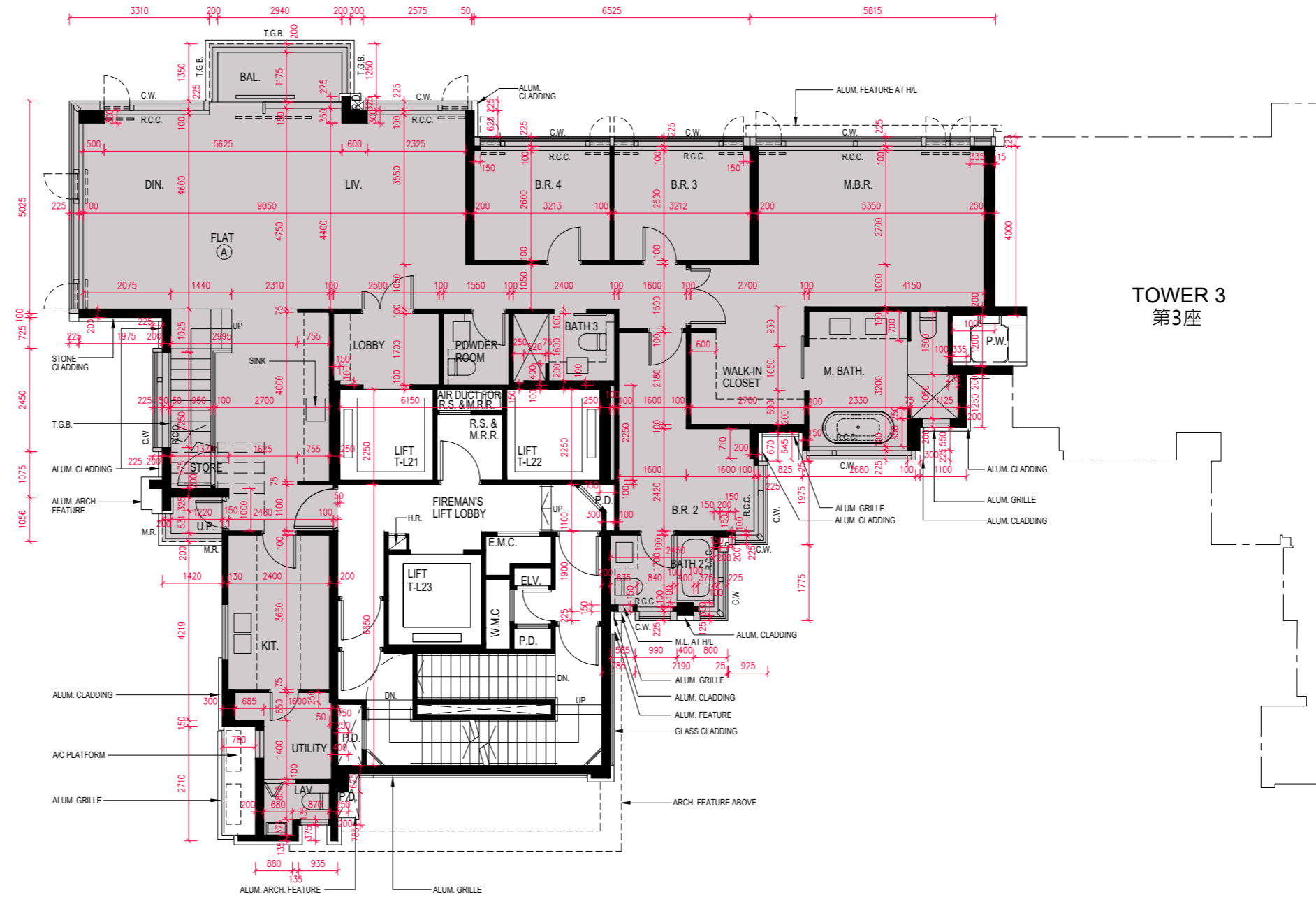
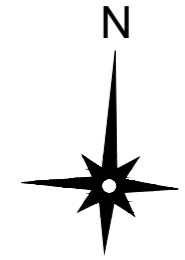
- The dimensions of floor plans are all structural dimensions in millimetre.
- Please refer to Pages AL001 to AL004 of this sales brochure for remarks, legend of the terms and abbreviations shown in the floor plan.
-  Dotted line in a residential unit with open kitchen delineates the extent of open kitchen area.

附註:

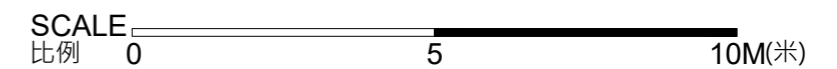
- 樓面平面圖所列之尺寸數字為毫米標示的建築結構尺寸。
- 樓面平面圖中顯示之附註、名詞及簡稱之圖例請參閱本售樓說明書第AL001至AL004頁。
-  設有開放式廚房的住宅單位內所顯示的虛線代表開放式廚房範圍。

FLOOR PLANS OF RESIDENTIAL PROPERTIES IN THE PHASE 期數的住宅物業的樓面平面圖

TOWER 2 21/F PLAN
第2座 21樓平面圖



TOWER 3
第3座



FLOOR PLANS OF RESIDENTIAL PROPERTIES IN THE PHASE 期數的住宅物業的樓面平面圖

| | Tower Name 大廈名稱 | Floor 樓層 | Flat 單位 |
|---|-----------------|-------------|------------------------------|
| | | | A |
| Floor-to-floor height of each residential property (mm) 每個住宅物業的層與層之間的高度 (毫米) | Tower 2 第2座 | 21/F 21樓 | 3500, 3825 |
| The thickness of the floor slabs (excluding plaster) of each residential property (mm) 每個住宅物業的樓板的厚度 (不包括灰泥) (毫米) | | | 125, 150, 175, 200, 475, 600 |

The internal areas of the residential properties on the upper floors will generally be slightly larger than those on the lower floors because of the reducing thickness of the structural walls on the upper floors. (This does not apply to the residential properties in the Phase because the design of the Phase does not involve reducing thickness of structural walls of residential properties on the upper floors and hence internal areas of those residential properties will not be increased.)

因住宅物業的較高樓層的結構牆的厚度遞減，較高樓層的內部面積，一般比較低樓層的內部面積稍大。(不適用於期數內的住宅物業，因為期數的設計是不牽涉較高樓層的住宅物業的結構牆的厚度遞減。因此，該等住宅物業的內部面積不會增加。)

Remarks:

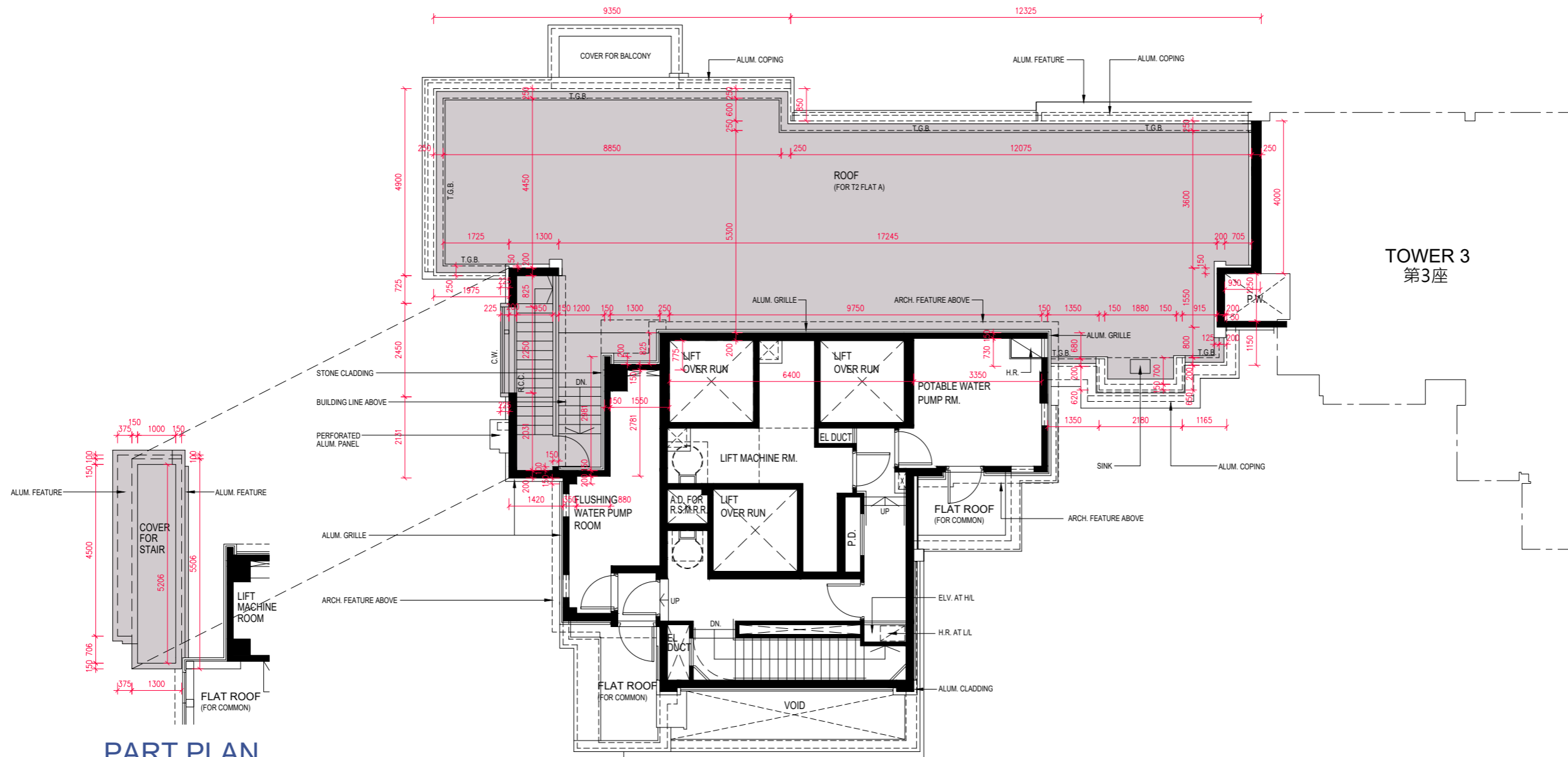
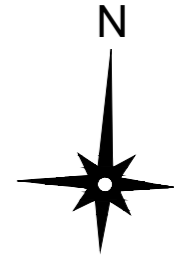
- The dimensions of floor plans are all structural dimensions in millimetre.
- Please refer to Pages AL001 to AL004 of this sales brochure for remarks, legend of the terms and abbreviations shown in the floor plan.
- □ □ □ Dotted line in a residential unit with open kitchen delineates the extent of open kitchen area.

附註:

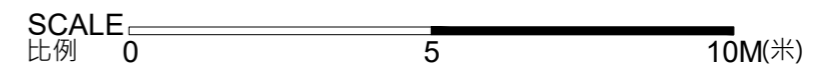
- 樓面平面圖所列之尺寸數字為毫米標示的建築結構尺寸。
- 樓面平面圖中顯示之附註、名詞及簡稱之圖例請參閱本售樓說明書第AL001至AL004頁。
- □ □ □ 設有開放式廚房的住宅單位內所顯示的虛線代表開放式廚房範圍。

FLOOR PLANS OF RESIDENTIAL PROPERTIES IN THE PHASE 期數的住宅物業的樓面平面圖

TOWER 2 ROOF PLAN
第2座 天台平面圖



PART PLAN
部份平面圖



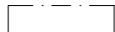
FLOOR PLANS OF RESIDENTIAL PROPERTIES IN THE PHASE 期數的住宅物業的樓面平面圖

| | Tower Name 大廈名稱 | Floor 樓層 | Flat 單位 |
|---|-----------------|------------|------------|
| | | | A |
| Floor-to-floor height of each residential property (mm) 每個住宅物業的層與層之間的高度 (毫米) | Tower 2 第2座 | ROOF 天台 | N/A 不適用 |
| The thickness of the floor slabs (excluding plaster) of each residential property (mm) 每個住宅物業的樓板的厚度 (不包括灰泥) (毫米) | | | N/A 不適用 |

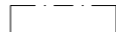
The internal areas of the residential properties on the upper floors will generally be slightly larger than those on the lower floors because of the reducing thickness of the structural walls on the upper floors. (This does not apply to the residential properties in the Phase because the design of the Phase does not involve reducing thickness of structural walls of residential properties on the upper floors and hence internal areas of those residential properties will not be increased.)

因住宅物業的較高樓層的結構牆的厚度遞減，較高樓層的內部面積，一般比較低樓層的內部面積稍大。(不適用於期數內的住宅物業，因為期數的設計是不牽涉較高樓層的住宅物業的結構牆的厚度遞減。因此，該等住宅物業的內部面積不會增加。)

Remarks:

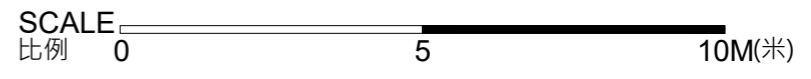
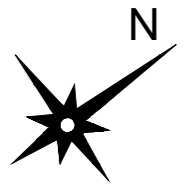
- The dimensions of floor plans are all structural dimensions in millimetre.
- Please refer to Pages AL001 to AL004 of this sales brochure for remarks, legend of the terms and abbreviations shown in the floor plan.
-  Dotted line in a residential unit with open kitchen delineates the extent of open kitchen area.

附註:

- 樓面平面圖所列之尺寸數字為毫米標示的建築結構尺寸。
- 樓面平面圖中顯示之附註、名詞及簡稱之圖例請參閱本售樓說明書第AL001至AL004頁。
-  設有開放式廚房的住宅單位內所顯示的虛線代表開放式廚房範圍。

FLOOR PLANS OF RESIDENTIAL PROPERTIES IN THE PHASE 期數的住宅物業的樓面平面圖

TOWER 5 5/F PLAN 第5座 5樓平面圖




FLOOR PLANS OF RESIDENTIAL PROPERTIES IN THE PHASE 期數的住宅物業的樓面平面圖

| | Tower Name 大廈名稱 | Floor 樓層 | Flat 單位 | | | | | | | | | | |
|---|--------------------|-------------|------------------------|------------------------|------------------------|------------------------|---------------------------------|---------------------------------|------------------------|------------------------|------------------------|---------------------|---------------|
| | | | A | B | C | D | E | F | G | H | J | K | L |
| Floor-to-floor height of each residential property (mm) 每個住宅物業的層與層之間的高度 (毫米) | Tower 5 第5座 | 5/F 5樓 | 2950, 3050, 3300 | 2950, 3050, 3300 | 2950, 3050, 3300 | 2950, 3050, 3300 | 2950, 3050, 3300, 3450 | 2950, 3050, 3100, 3300 | 2950, 3050, 3300 | 2950, 3050, 3300 | 2950, 3050, 3300 | 3050, 3300 | 3050, 3300 |
| The thickness of the floor slabs (excluding plaster) of each residential property (mm) 每個住宅物業的樓板的厚度 (不包括灰泥) (毫米) | | | 125, 150 | 125, 200 | 125, 175 | 125, 150, 175 | 125, 150, 175 | 125, 150, 175 | 125, 175 | 125, 150, 175 | 125, 150, 175 | 125, 150, 175 | 125, 175 |

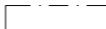
The internal areas of the residential properties on the upper floors will generally be slightly larger than those on the lower floors because of the reducing thickness of the structural walls on the upper floors. (This does not apply to the residential properties in the Phase because the design of the Phase does not involve reducing thickness of structural walls of residential properties on the upper floors and hence internal areas of those residential properties will not be increased.)

因住宅物業的較高樓層的結構牆的厚度遞減，較高樓層的內部面積，一般比較低樓層的內部面積稍大。(不適用於期數內的住宅物業，因為期數的設計是不牽涉較高樓層的住宅物業的結構牆的厚度遞減。因此，該等住宅物業的內部面積不會增加。)

Remarks:

- The dimensions of floor plans are all structural dimensions in millimetre.
- Please refer to Pages AL001 to AL004 of this sales brochure for remarks, legend of the terms and abbreviations shown in the floor plan.
-  Dotted line in a residential unit with open kitchen delineates the extent of open kitchen area.

附註:

- 樓面平面圖所列之尺寸數字為毫米標示的建築結構尺寸。
- 樓面平面圖中顯示之附註、名詞及簡稱之圖例請參閱本售樓說明書第AL001至AL004頁。
-  設有開放式廚房的住宅單位內所顯示的虛線代表開放式廚房範圍。

FLOOR PLANS OF RESIDENTIAL PROPERTIES IN THE PHASE 期數的住宅物業的樓面平面圖

TOWER 5 6/F-12/F, 15/F-20/F PLAN
 第5座 6樓至12樓, 15樓至20樓平面圖



20/F PART PLAN IN "AS-IS" LAYOUT
 20樓現狀部分平面圖

20/F PART PLAN IN "AS-IS" LAYOUT
 20樓現狀部分平面圖

SCALE 比例 0 5 10M(米)

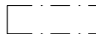
FLOOR PLANS OF RESIDENTIAL PROPERTIES IN THE PHASE 期數的住宅物業的樓面平面圖

| | Tower Name 大廈名稱 | Floor 樓層 | Flat 單位 | | | | | | | | | | |
|---|--------------------|---|------------------------|---------------------------------|------------------------|------------------------|------------------------|------------------------|------------------------|------------------------|------------------------|------------------------|------------------------|
| | | | A | B | C | D | E | F | G | H | J | K | L |
| Floor-to-floor height of each residential property (mm) 每個住宅物業的層與層之間的高度 (毫米) | Tower 5 第5座 | 6/F - 12/F, 15/F - 19/F 6樓至12樓 15樓至19樓 | 2950, 3050, 3300 | 2950, 3050, 3300 | 2950, 3050, 3300 | 2950, 3050, 3300 | 2950, 3050, 3300 | 2950, 3050, 3300 | 2950, 3050, 3300 | 2950, 3050, 3300 | 2950, 3050, 3300 | 3050, 3300 | 3050, 3300 |
| The thickness of the floor slabs (excluding plaster) of each residential property (mm) 每個住宅物業的樓板的厚度 (不包括灰泥) (毫米) | | | 125, 150 | 125, 200 | 125, 175 | 125, 150, 175 | 125, 150, 175 | 125, 150, 175 | 125, 175 | 125, 150, 175 | 125, 150, 175 | 125, 150, 175 | 125, 175 |
| | Tower Name 大廈名稱 | Floor 樓層 | Flat 單位 | | | | | | | | | | |
| | | | A | B | C | D | E | F | G | H | J | K | L |
| Floor-to-floor height of each residential property (mm) 每個住宅物業的層與層之間的高度 (毫米) | Tower 5 第5座 | 20/F 20樓 | 2950, 3050, 3300 | 2950, 3150, 3200, 3300 | 2950, 3050, 3300 | 2950, 3050, 3300 | 2950, 3050, 3300 | 2950, 3050, 3300 | 2950, 3050, 3300 | 2950, 3050, 3300 | 2950, 3050, 3300 | 2950, 3050, 3300 | 2950, 3050, 3300 |
| The thickness of the floor slabs (excluding plaster) of each residential property (mm) 每個住宅物業的樓板的厚度 (不包括灰泥) (毫米) | | | 125, 150 | 125, 200 | 125, 175 | 125, 150, 175 | 125, 150, 175 | 125, 150, 175 | 125, 175 | 125, 150, 175 | 125, 150, 175 | 125, 150, 175 | 125, 175 |

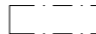
The internal areas of the residential properties on the upper floors will generally be slightly larger than those on the lower floors because of the reducing thickness of the structural walls on the upper floors. (This does not apply to the residential properties in the Phase because the design of the Phase does not involve reducing thickness of structural walls of residential properties on the upper floors and hence internal areas of those residential properties will not be increased.)

因住宅物業的較高樓層的結構牆的厚度遞減，較高樓層的內部面積，一般比較低樓層的內部面積稍大。(不適用於期數內的住宅物業，因為期數的設計是不牽涉較高樓層的住宅物業的結構牆的厚度遞減。因此，該等住宅物業的內部面積不會增加。)

Remarks:

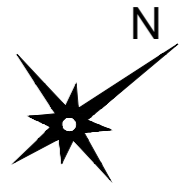
- The dimensions of floor plans are all structural dimensions in millimetre.
- Please refer to Pages AL001 to AL004 of this sales brochure for remarks, legend of the terms and abbreviations shown in the floor plan.
-  Dotted line in a residential unit with open kitchen delineates the extent of open kitchen area.
- Parts of the relevant residential property shown with part plan(s) in "as-is" layout in the floor plan have been altered by way of exempted works under the Buildings Ordinance and its subsidiary legislation.

附註:

- 樓面平面圖所列之尺寸數字為毫米標示的建築結構尺寸。
- 樓面平面圖中顯示之附註、名詞及簡稱之圖例請參閱本售樓說明書第AL001至AL004頁。
-  設有開放式廚房的住宅單位內所顯示的虛線代表開放式廚房範圍。
- 樓面平面圖內以現狀部分平面圖顯示的相關住宅物業的一部分已施行《建築物條例》及其附屬條例下的豁免工程。

FLOOR PLANS OF RESIDENTIAL PROPERTIES IN THE PHASE 期數的住宅物業的樓面平面圖

TOWER 5 21/F PLAN
第5座 21樓平面圖



SCALE 比例 0 5 10M(米)

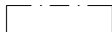
FLOOR PLANS OF RESIDENTIAL PROPERTIES IN THE PHASE 期數的住宅物業的樓面平面圖

| | Tower Name 大廈名稱 | Floor 樓層 | Flat 單位 | | | | | | | | | |
|---|--------------------|-------------|--|------------------------|------------------------|------------------------|------------------------|------------------------|------------------------|------------------------|------------------------|------------------------|
| | | | A | C | D | E | F | G | H | J | K | L |
| Floor-to-floor height of each residential property (mm) 每個住宅物業的層與層之間的高度 (毫米) | Tower 5 第5座 | 21/F 21樓 | 2950, 3050, 3150, 3200, 3300 | 2950, 3050, 3300 | 2950, 3050, 3300 | 2950, 3050, 3300 | 2950, 3050, 3300 | 2950, 3050, 3300 | 2950, 3050, 3300 | 2950, 3050, 3300 | 2950, 3050, 3300 | 2950, 3050, 3300 |
| The thickness of the floor slabs (excluding plaster) of each residential property (mm) 每個住宅物業的樓板的厚度 (不包括灰泥) (毫米) | | | 125, 150, 200 | 125, 175 | 125, 150, 175 | 125, 150, 175 | 125, 150, 175 | 125, 150, 175 | 125, 175 | 125, 150, 175 | 125, 150, 175 | 125, 175 |


The internal areas of the residential properties on the upper floors will generally be slightly larger than those on the lower floors because of the reducing thickness of the structural walls on the upper floors. (This does not apply to the residential properties in the Phase because the design of the Phase does not involve reducing thickness of structural walls of residential properties on the upper floors and hence internal areas of those residential properties will not be increased.)

因住宅物業的較高樓層的結構牆的厚度遞減，較高樓層的內部面積，一般比較低樓層的內部面積稍大。(不適用於期數內的住宅物業，因為期數的設計是不牽涉較高樓層的住宅物業的結構牆的厚度遞減。因此，該等住宅物業的內部面積不會增加。)

Remarks:

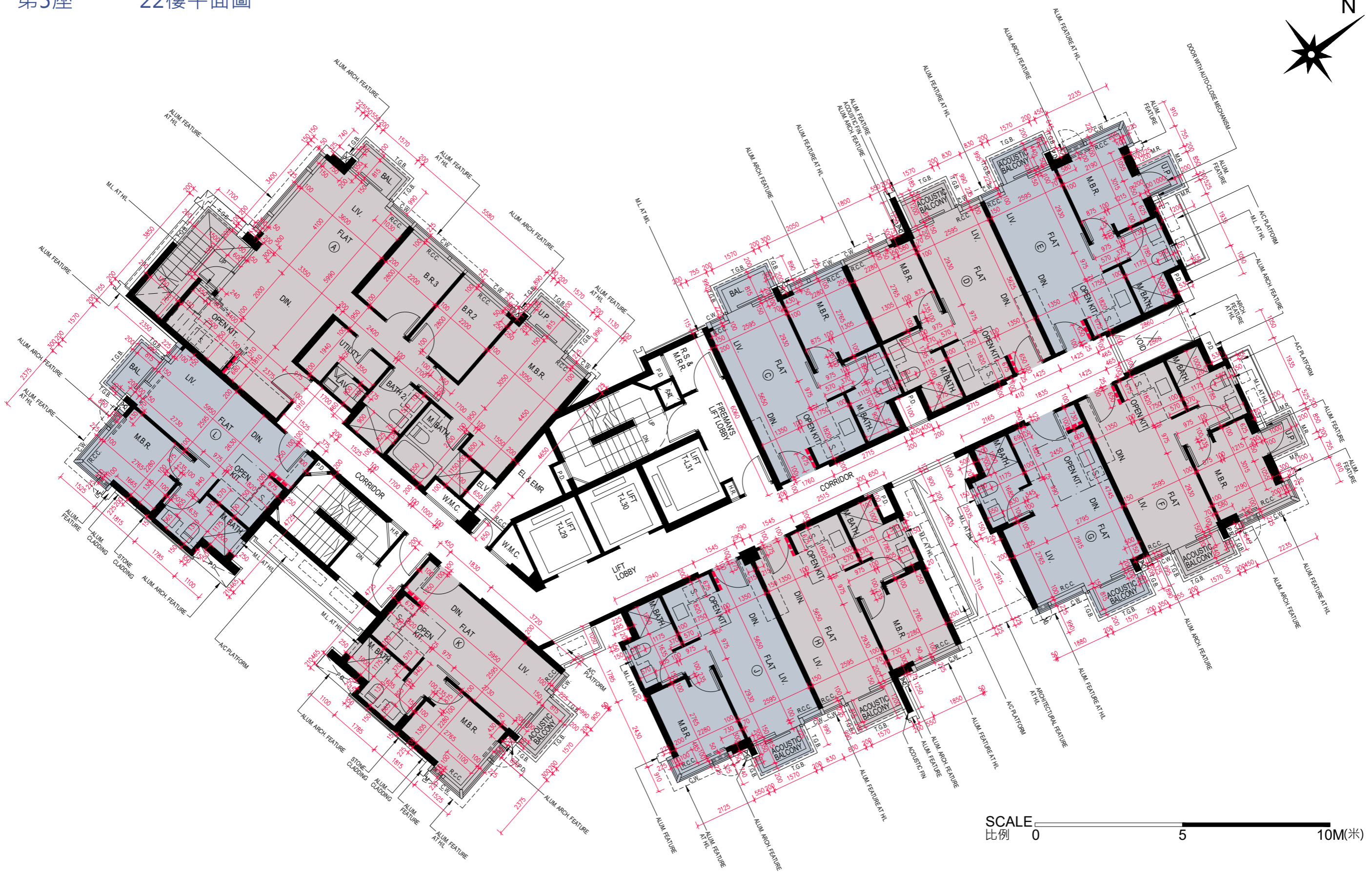
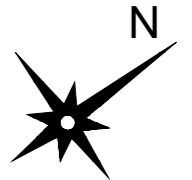
- The dimensions of floor plans are all structural dimensions in millimetre.
- Please refer to Pages AL001 to AL004 of this sales brochure for remarks, legend of the terms and abbreviations shown in the floor plan.
-  Dotted line in a residential unit with open kitchen delineates the extent of open kitchen area.

附註:

- 樓面平面圖所列之尺寸數字為毫米標示的建築結構尺寸。
- 樓面平面圖中顯示之附註、名詞及簡稱之圖例請參閱本售樓說明書第AL001至AL004頁。
-  設有開放式廚房的住宅單位內所顯示的虛線代表開放式廚房範圍。

FLOOR PLANS OF RESIDENTIAL PROPERTIES IN THE PHASE 期數的住宅物業的樓面平面圖

TOWER 5 22/F PLAN
第5座 22樓平面圖



SCALE 比例 0 5 10M(米)


FLOOR PLANS OF RESIDENTIAL PROPERTIES IN THE PHASE 期數的住宅物業的樓面平面圖

| | Tower Name 大廈名稱 | Floor 樓層 | Flat 單位 | | | | | | | | | |
|---|--------------------|-------------|---------------------|-------------|---------------------|---------------------|---------------------|---------------------|-----------------------------|---------------------|---------------------|---------------------|
| | | | A | C | D | E | F | G | H | J | K | L |
| Floor-to-floor height of each residential property (mm) 每個住宅物業的層與層之間的高度 (毫米) | Tower 5 第5座 | 22/F 22樓 | 3500 | 3500 | 3500 | 3450, 3500 | 3450, 3500 | 3500 | 3500 | 3500 | 3500 | 3500 |
| The thickness of the floor slabs (excluding plaster) of each residential property (mm) 每個住宅物業的樓板的厚度 (不包括灰泥) (毫米) | | | 125, 150, 200 | 125, 175 | 125, 150, 175 | 125, 150, 175 | 125, 150, 175 | 125, 175, 200 | 125, 150, 175, 200 | 125, 175, 200 | 125, 175, 200 | 125, 175, 200 |


The internal areas of the residential properties on the upper floors will generally be slightly larger than those on the lower floors because of the reducing thickness of the structural walls on the upper floors. (This does not apply to the residential properties in the Phase because the design of the Phase does not involve reducing thickness of structural walls of residential properties on the upper floors and hence internal areas of those residential properties will not be increased.)

因住宅物業的較高樓層的結構牆的厚度遞減，較高樓層的內部面積，一般比較低樓層的內部面積稍大。(不適用於期數內的住宅物業，因為期數的設計是不牽涉較高樓層的住宅物業的結構牆的厚度遞減。因此，該等住宅物業的內部面積不會增加。)

Remarks:

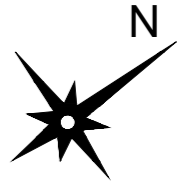
- The dimensions of floor plans are all structural dimensions in millimetre.
- Please refer to Pages AL001 to AL004 of this sales brochure for remarks, legend of the terms and abbreviations shown in the floor plan.
-  Dotted line in a residential unit with open kitchen delineates the extent of open kitchen area.

附註:

- 樓面平面圖所列之尺寸數字為毫米標示的建築結構尺寸。
- 樓面平面圖中顯示之附註、名詞及簡稱之圖例請參閱本售樓說明書第AL001至AL004頁。
-  設有開放式廚房的住宅單位內所顯示的虛線代表開放式廚房範圍。

FLOOR PLANS OF RESIDENTIAL PROPERTIES IN THE PHASE 期數的住宅物業的樓面平面圖

TOWER 5 ROOF PLAN
第5座 天台平面圖



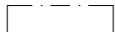
FLOOR PLANS OF RESIDENTIAL PROPERTIES IN THE PHASE 期數的住宅物業的樓面平面圖

| | Tower Name 大廈名稱 | Floor 樓層 | Flat 單位 | | | | | | | | |
|---|--------------------|-------------|------------|------------|------------|------------|------------|------------|------------|------------|------------|
| | | | A | D | E | F | G | H | J | K | L |
| Floor-to-floor height of each residential property (mm) 每個住宅物業的層與層之間的高度 (毫米) | Tower 5 第5座 | ROOF 天台 | N/A 不適用 | N/A 不適用 | N/A 不適用 | N/A 不適用 | N/A 不適用 | N/A 不適用 | N/A 不適用 | N/A 不適用 | N/A 不適用 |
| The thickness of the floor slabs (excluding plaster) of each residential property (mm) 每個住宅物業的樓板的厚度 (不包括灰泥) (毫米) | | | N/A 不適用 | N/A 不適用 | N/A 不適用 | N/A 不適用 | N/A 不適用 | N/A 不適用 | N/A 不適用 | N/A 不適用 | N/A 不適用 |

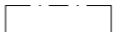
The internal areas of the residential properties on the upper floors will generally be slightly larger than those on the lower floors because of the reducing thickness of the structural walls on the upper floors. (This does not apply to the residential properties in the Phase because the design of the Phase does not involve reducing thickness of structural walls of residential properties on the upper floors and hence internal areas of those residential properties will not be increased.)

因住宅物業的較高樓層的結構牆的厚度遞減，較高樓層的內部面積，一般比較低樓層的內部面積稍大。(不適用於期數內的住宅物業，因為期數的設計是不牽涉較高樓層的住宅物業的結構牆的厚度遞減。因此，該等住宅物業的內部面積不會增加。)

Remarks:

- The dimensions of floor plans are all structural dimensions in millimetre.
- Please refer to Pages AL001 to AL004 of this sales brochure for remarks, legend of the terms and abbreviations shown in the floor plan.
-  Dotted line in a residential unit with open kitchen delineates the extent of open kitchen area.

附註:

- 樓面平面圖所列之尺寸數字為毫米標示的建築結構尺寸。
- 樓面平面圖中顯示之附註、名詞及簡稱之圖例請參閱本售樓說明書第AL001至AL004頁。
-  設有開放式廚房的住宅單位內所顯示的虛線代表開放式廚房範圍。