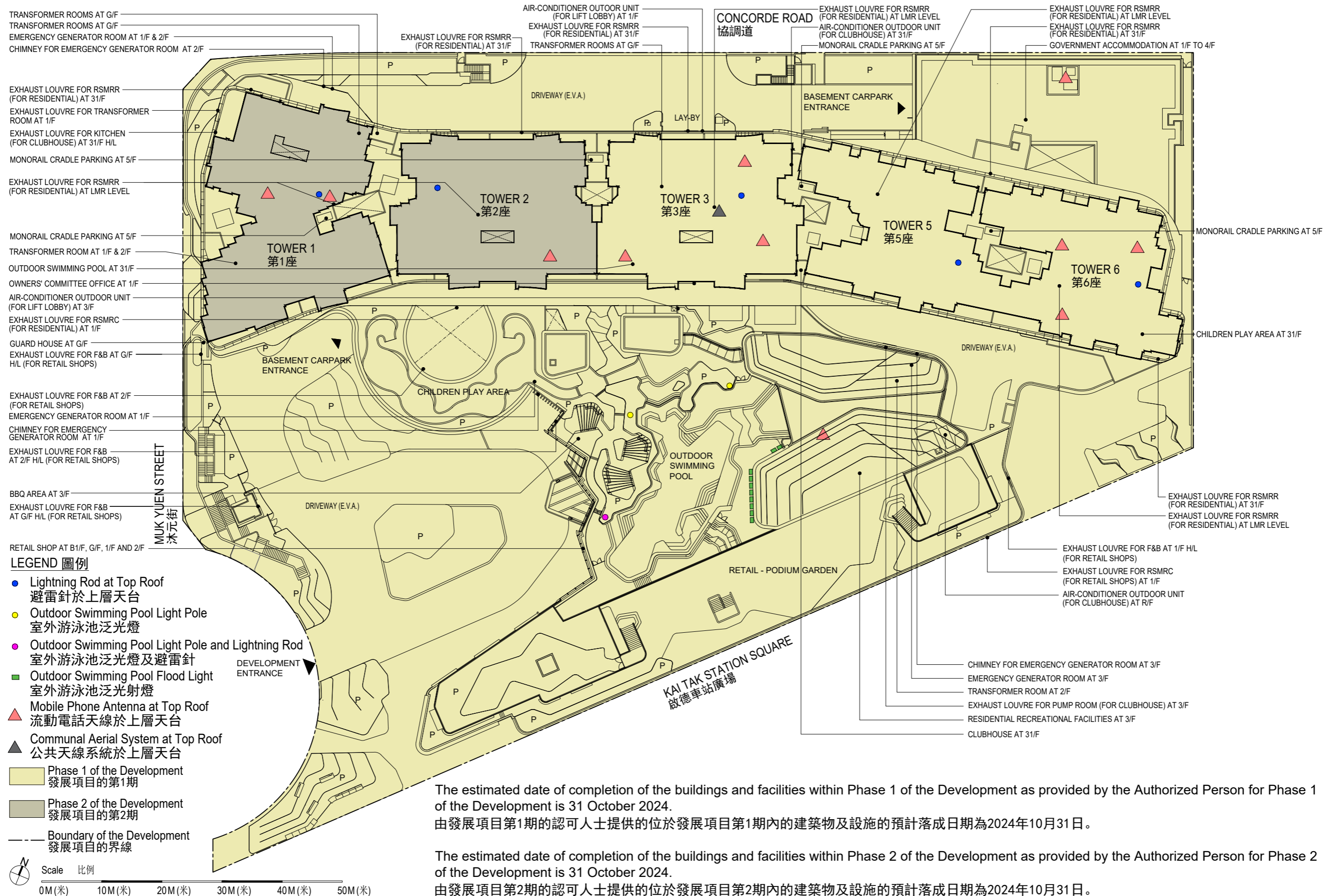


LAYOUT PLAN OF THE DEVELOPMENT

發展項目的布局圖



The estimated date of completion of the buildings and facilities within Phase 1 of the Development as provided by the Authorized Person for Phase 1 of the Development is 31 October 2024.
由發展項目第1期的認可人士提供的位於發展項目第1期內的建築物及設施的預計落成日期為2024年10月31日。

The estimated date of completion of the buildings and facilities within Phase 2 of the Development as provided by the Authorized Person for Phase 2 of the Development is 31 October 2024.
由發展項目第2期的認可人士提供的位於發展項目第2期內的建築物及設施的預計落成日期為2024年10月31日。

LAYOUT PLAN OF THE DEVELOPMENT

發展項目的布局圖

LEGEND OF THE TERMS AND ABBREVIATIONS USED ON LAYOUT PLAN

布局圖中所使用之名詞及簡稱之圖例

AIR-CONDITIONER OUTDOOR UNIT (FOR CLUBHOUSE) AT R/F =	= 位於天台之冷氣室外機(供會所用)
AIR-CONDITIONER OUTDOOR UNIT (FOR CLUBHOUSE) AT MAIN ROOF	
AIR-CONDITIONER OUTDOOR UNIT (FOR CLUBHOUSE) AT X/F	= 位於X樓之冷氣室外機(供會所用)
AIR-CONDITIONER OUTDOOR UNIT (FOR LIFT LOBBY) AT X/F	= 位於X樓之冷氣室外機(供升降機大堂用)
BASEMENT CARPARK ENTRANCE	= 地庫停車場入口
BBQ AREA AT 3/F	= 位於3樓之燒烤場
CHILDREN PLAY AREA	= 兒童遊樂場
CHILDREN PLAY AREA AT 31/F	= 位於31樓之兒童遊樂場
CHIMNEY FOR EMERGENCY GENERATOR ROOM AT X/F	= 位於X樓之緊急發電機機房煙囪
CLUBHOUSE AT 31/F	= 位於31樓之會所
DEVELOPMENT ENTRANCE	= 發展項目入口
DRIVEWAY (E.V.A.) = DRIVEWAY (EMERGENCY VEHICULAR ACCESS)	= 緊急車輛通道
EMERGENCY GENERATOR ROOM AT 1/F & 2/F	= 位於1樓及2樓之緊急發電機房
EMERGENCY GENERATOR ROOM AT X/F	= 位於X樓之緊急發電機房
EXHAUST LOUVRE FOR RSMRC (FOR RESIDENTIAL) AT 1/F =	= 位於1樓之垃圾及物料回收站(供住宅用)排氣百葉
EXHAUST LOUVRE FOR REFUSE STORAGE AND MATERIAL RECOVERY CHAMBER (FOR RESIDENTIAL) AT 1/F	
EXHAUST LOUVRE FOR RSMRC (FOR RETAIL SHOPS) AT 1/F =	= 位於1樓之垃圾及物料回收站(供商舖用)排氣百葉
EXHAUST LOUVRE FOR REFUSE STORAGE AND MATERIAL RECOVERY CHAMBER (FOR RETAIL SHOPS) AT 1/F	
EXHAUST LOUVRE FOR RSMRR (FOR RESIDENTIAL) AT 31/F =	= 位於31樓之垃圾及物料回收房(供住宅用)排氣百葉
EXHAUST LOUVRE FOR REFUSE STORAGE AND MATERIAL RECOVERY ROOM (FOR RESIDENTIAL) AT 31/F	
EXHAUST LOUVRE FOR RSMRR (FOR RESIDENTIAL) AT LMR LEVEL =	= 位於升降機機房層之垃圾及物料回收房(供住宅用)排氣百葉
EXHAUST LOUVRE FOR REFUSE STORAGE AND MATERIAL RECOVERY ROOM (FOR RESIDENTIAL) AT LIFT MACHINE ROOM LEVEL	
EXHAUST LOUVRE FOR F&B AT G/F H/L (FOR RETAIL SHOPS) =	= 位於地下高位之餐飲排氣百葉(供商舖用)
EXHAUST LOUVRE FOR FOOD AND BEVERAGE AT G/F HIGH LEVEL (FOR RETAIL SHOPS)	
EXHAUST LOUVRE FOR F&B AT 2/F (FOR RETAIL SHOPS) =	= 位於2樓之餐飲排氣百葉(供商舖用)
EXHAUST LOUVRE FOR FOOD AND BEVERAGE AT 2/F (FOR RETAIL SHOPS)	
EXHAUST LOUVRE FOR F&B AT X/F H/L (FOR RETAIL SHOPS) =	= 位於X樓高位之餐飲排氣百葉(供商舖用)
EXHAUST LOUVRE FOR FOOD AND BEVERAGE AT X/F HIGH LEVEL (FOR RETAIL SHOPS)	
EXHAUST LOUVRE FOR PUMP ROOM (FOR CLUBHOUSE) AT 3/F	= 位於3樓之泵房排氣百葉(供會所用)
EXHAUST LOUVRE FOR KITCHEN (FOR CLUBHOUSE) AT 31/F H/L =	= 位於31樓高位之廚房排氣百葉(供會所用)
EXHAUST LOUVRE FOR KITCHEN (FOR CLUBHOUSE) AT 31/F HIGH LEVEL	
EXHAUST LOUVRE FOR TRANSFORMER ROOM AT 1/F	= 位於1樓之變壓器房排氣百葉
GOVERNMENT ACCOMMODATION AT 1/F TO 4/F	= 位於1樓至4樓之政府物業
GUARD HOUSE AT G/F	= 位於地下之警衛室
LAY-BY	= 停車區
MONORAIL CRADLE PARKING AT 5/F	= 位於5樓之吊運車停泊處
OUTDOOR SWIMMING POOL	= 室外游泳池
OUTDOOR SWIMMING POOL AT 31/F	= 位於31樓之室外游泳池
OWNERS' COMMITTEE OFFICE AT 1/F	= 位於1樓之業主委員會的辦公室
P = PLANTER	= 花槽
RESIDENTIAL RECREATIONAL FACILITIES AT X/F	= 位於X樓之住客康樂設施
RETAIL - PODIUM GARDEN	= 商業-平台花園
RETAIL SHOP AT B1/F, G/F, 1/F AND 2/F	= 位於地庫1層、地下、1樓及2樓之商舖

LAYOUT PLAN OF THE DEVELOPMENT

發展項目的布局圖

TRANSFORMER ROOM AT 1/F & 2/F
TRANSFORMER ROOM AT X/F
TRANSFORMER ROOMS AT G/F

= 位於1樓及2樓之變壓器房
= 位於X樓之變壓器房
= 位於地下之變壓器房