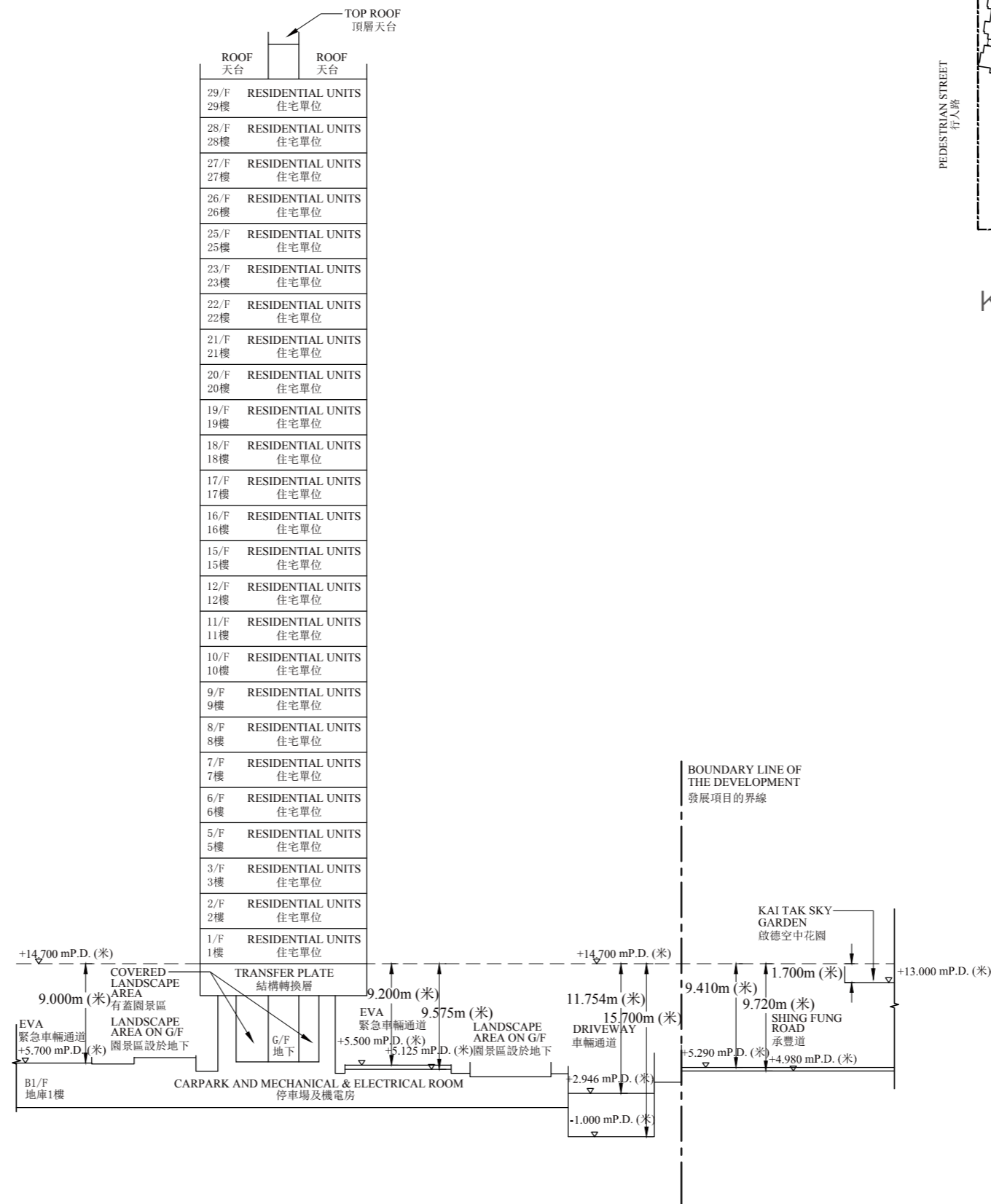


Cross-section plan of building in the phase 期數中的建築物的橫截面圖

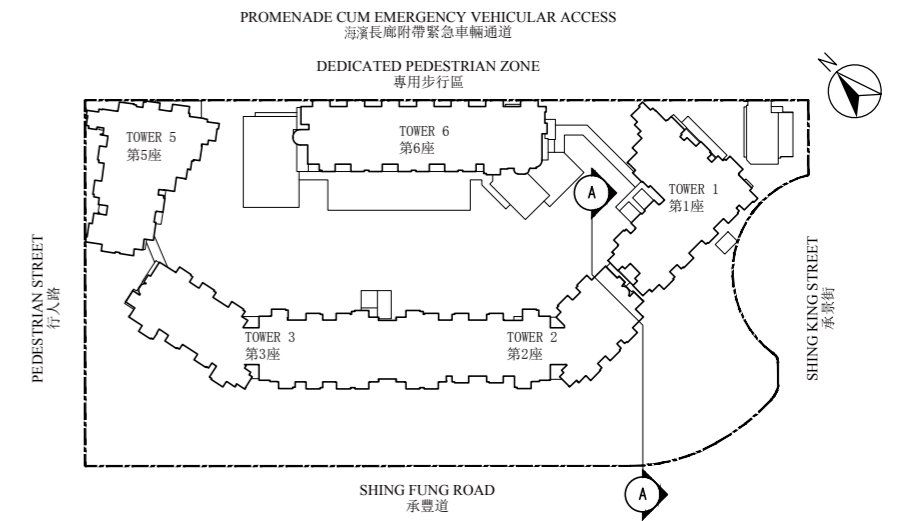
Cross-Section Plan A-A 橫截面圖 A-A

- Dotted line denotes the level of the lowest residential floor.
虛線為最低住宅樓層水平。
 - ▽ Denotes height (in metres) above the Hong Kong principal Datum.
代表香港主水平基準以上的高度 (米)。
- Remark : This cross-section plan is not drawn to scale
備註：此橫截面圖並非按照比例繪圖
- EVA = Emergency Vehicular Access
緊急車輛通道

TOWER 2
第2座



The part of Emergency Vehicular Access adjacent to the building is 5.700 metres above the Hong Kong Principal Datum.
毗連建築物的一段緊急車輛通道為香港主水平基準以上5.700米。



Key Plan 索引圖

The part of Kai Tak Sky Garden adjacent to the building is 13.000 metres above the Hong Kong Principal Datum.
毗連建築物的一段啟德空中花園為香港主水平基準以上13.000米。

The part of Shing Fung Road adjacent to the building is 4.980 to 5.290 metres above the Hong Kong Principal Datum.
毗連建築物的一段承豐道為香港主水平基準以上4.980至5.290米。

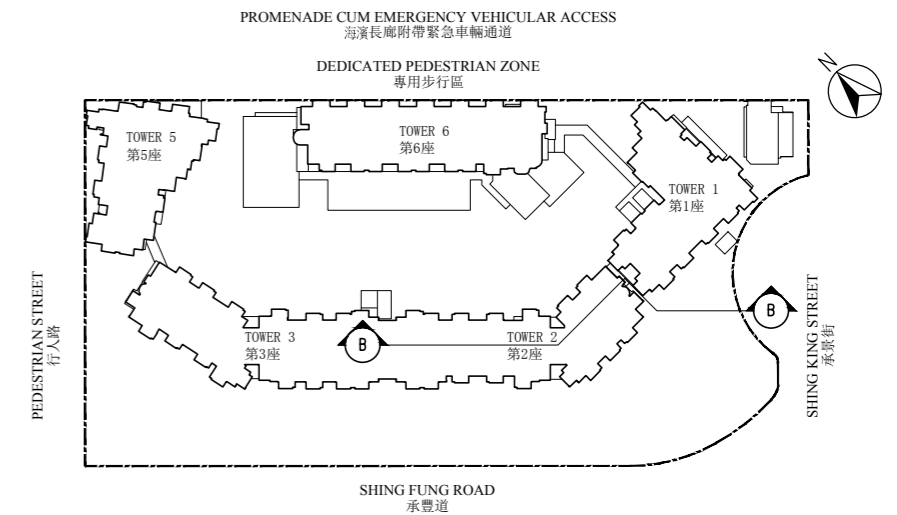
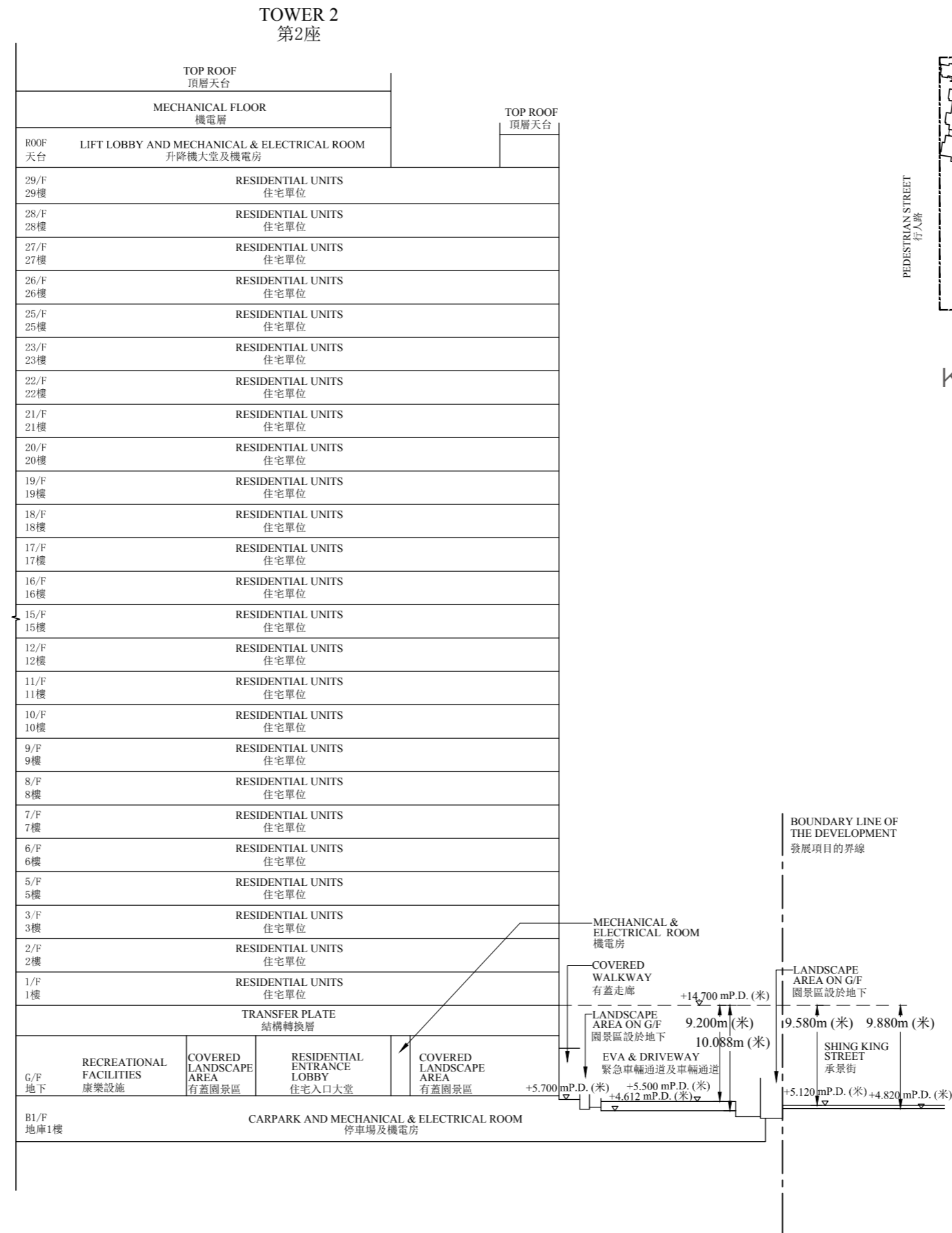
The part of Driveway adjacent to the building is 1.000 metres below to 2.946 metres above the Hong Kong Principal Datum.
毗連建築物的一段車輛通道為香港主水平基準以下1.000至以上2.946米。

The part of Emergency Vehicular Access adjacent to the building is 5.125 to 5.500 metres above the Hong Kong Principal Datum.
毗連建築物的一段緊急車輛通道為香港主水平基準以上5.125至5.500米。

Cross-section plan of building in the phase 期數中的建築物的橫截面圖

Cross-Section Plan B-B 橫截面圖 B-B

- Dotted line denotes the level of the lowest residential floor.
虛線為最低住宅樓層水平。
 - ▽ Denotes height (in metres) above the Hong Kong principal Datum.
代表香港主水平基準以上的高度(米)。
- Remark : This cross-section plan is not drawn to scale
備註：此橫截面圖並非按照比例繪圖
- EVA = Emergency Vehicular Access
緊急車輛通道



Key Plan 索引圖

The part of Shing King Street adjacent to the building is 4.820 to 5.120 metres above the Hong Kong Principal Datum.
毗連建築物的一段承景街為香港主水平基準以上4.820至5.120米。

The part of Emergency Vehicular Access & Driveway adjacent to the building is 4.612 to 5.500 metres above the Hong Kong Principal Datum.
毗連建築物的一段緊急車輛通道及車輛通道為香港主水平基準以上4.612至5.500米。

Cross-section plan of building in the phase 期數中的建築物的橫截面圖

Cross-Section Plan C-C 橫截面圖 C-C

--- Dotted line denotes the level of the lowest residential floor.
虛線為最低住宅樓層水平。

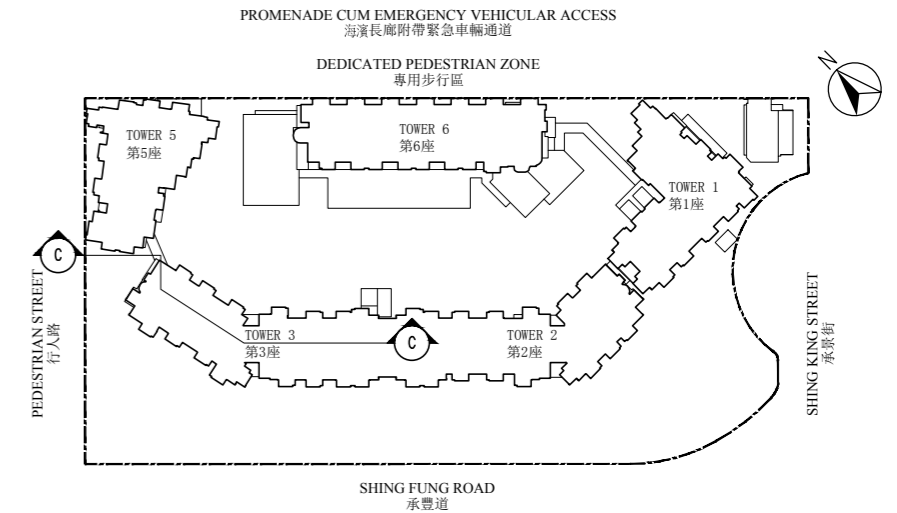
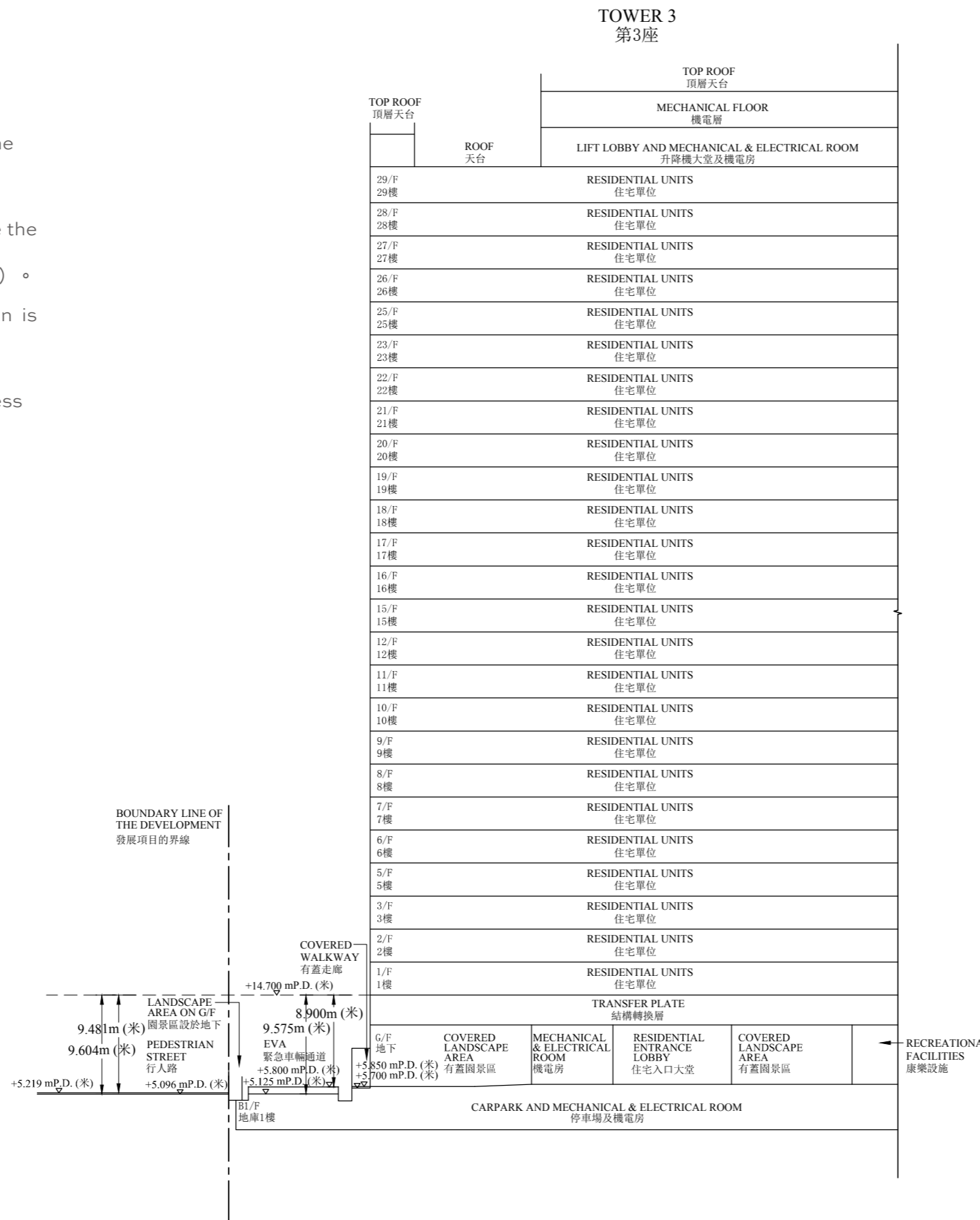
▽ Denotes height (in metres) above the Hong Kong principal Datum.
代表香港主水平基準以上的高度 (米)。

Remark : This cross-section plan is not drawn to scale
備註：此橫截面圖並非按照比例繪圖

EVA = Emergency Vehicular Access
緊急車輛通道

The part of Pedestrian Street adjacent to the building is 5.096 to 5.219 metres above the Hong Kong Principal Datum.
毗連建築物的一段行人路為香港主水平基準以上5.096至5.219米。

The part of Emergency Vehicular Access adjacent to the building is 5.125 to 5.800 metres above the Hong Kong Principal Datum.
毗連建築物的一段緊急車輛通道為香港主水平基準以上5.125至5.800米。



Key Plan 索引圖

Cross-section plan of building in the phase 期數中的建築物的橫截面圖

Cross-Section Plan D-D 橫截面圖 D-D

- Dotted line denotes the level of the lowest residential floor.
虛線為最低住宅樓層水平。
 - ▽ Denotes height (in metres) above the Hong Kong principal Datum.
代表香港主水平基準以上的高度 (米)。
- Remark : This cross-section plan is not drawn to scale
備註：此橫截面圖並非按照比例繪圖
- EVA = Emergency Vehicular Access
緊急車輛通道

The part of Kai Tak Sky Garden adjacent to the building is 13.000 metres above the Hong Kong Principal Datum.
毗連建築物的一段啟德空中花園為香港主水平基準以上13.000米。

The part of Shing Fung Road adjacent to the building is 4.780 to 5.100 metres above the Hong Kong Principal Datum.
毗連建築物的一段承豐道為香港主水平基準以上4.780至5.100米。

The part of Emergency Vehicular Access adjacent to the building is 5.125 to 5.584 metres above the Hong Kong Principal Datum.
毗連建築物的一段緊急車輛通道為香港主水平基準以上5.125至5.584米。

