

鳥瞰照片並不覆蓋該等空白範圍  
These blank areas fall outside the coverage of the relevant Aerial Photograph

● 發展項目的位置  
Location of the Development

此鳥瞰照片摘錄自地政總署測繪處於2023年2月24日在6,900呎飛行高度拍攝之鳥瞰照片，相片編號為E188647C。

The aerial photograph is adopted from part of the aerial photograph taken by Survey and Mapping Office and Lands Department at the flying height of 6,900 feet, photo no. E188647C dated 24 February 2023.

香港特別行政區政府地政總署測繪處©版權所有，未經許可，不得複製。

Survey and Mapping Office, Lands Department, The Government of HKSAR © Copyright reserved - reproduction by permission only.

備註：

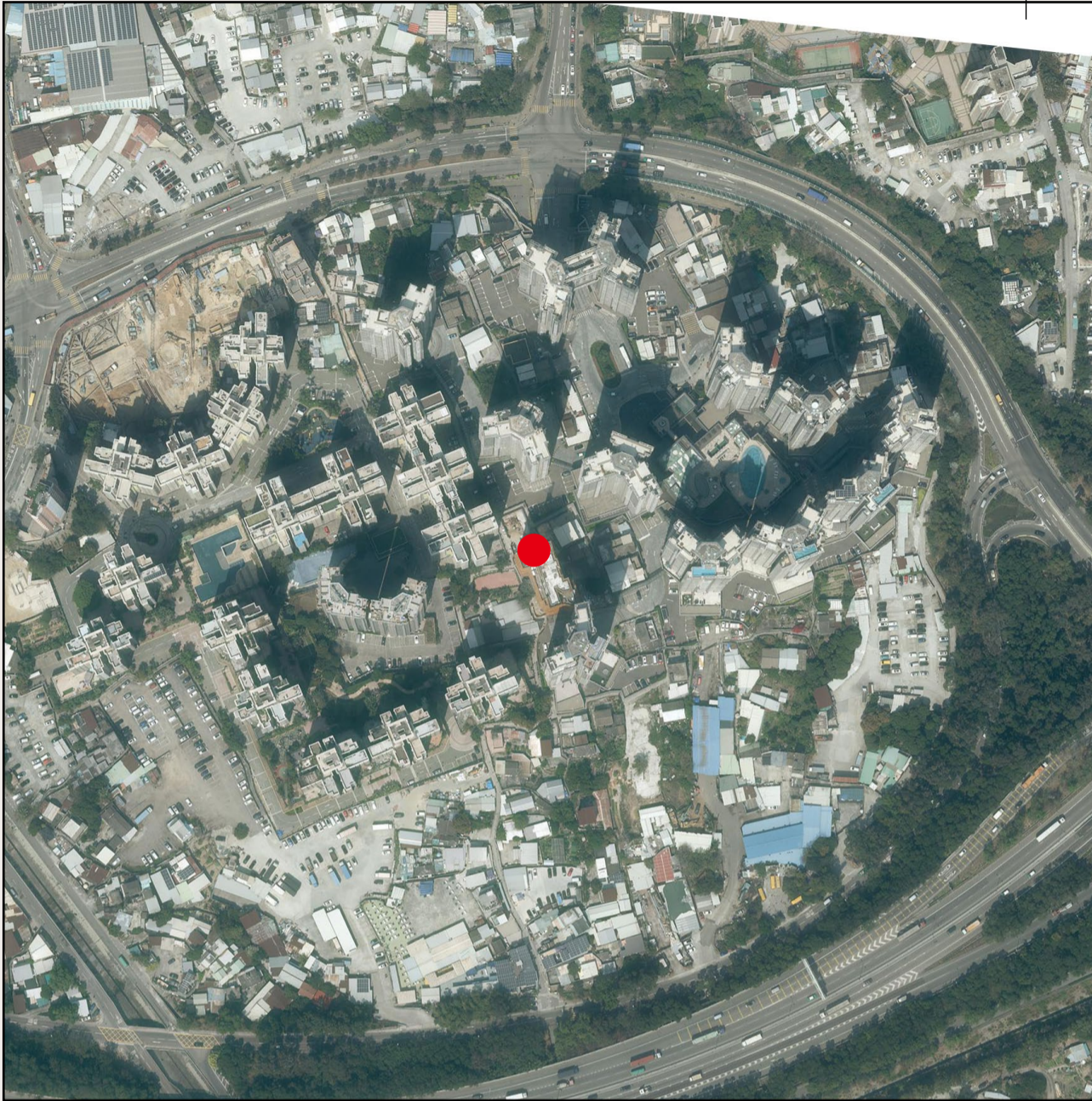
1. 發展項目的鳥瞰照片之副本可於開放時間向售樓處免費查閱。
2. 因技術原因（例如發展項目之形狀）、鳥瞰照片所顯示之範圍多於《一手住宅物業銷售條例》所要求顯示之範圍。
3. 賣方亦建議準買方到該發展地盤作實地考察，以獲取對該發展地盤、以及周邊地區的環境及附近的公共設施有較佳的了解。

Notes:

1. Copy of the aerial photograph of the Development is available for free inspection at the sales office(s) during opening hours.
2. Due to technical reasons (such as the shape of the Development), the aerial photograph has shown area more than that required under the Residential Properties (First-hand Sales) Ordinance.
3. The Vendor also advises prospective purchasers to conduct on-site visit for a better understanding of the development site, its surrounding environment and the public facilities nearby.

鳥瞰照片並不覆蓋本空白範圍

This blank area falls outside the coverage of the relevant Aerial Photograph



● 發展項目的位置  
Location of the Development

此鳥瞰照片摘錄自地政總署測繪處於2023年2月27日在6,900呎飛行高度拍攝之鳥瞰照片，相片編號為E188943C。

The aerial photograph is adopted from part of the aerial photograph taken by Survey and Mapping Office and Lands Department at the flying height of 6,900 feet, photo no. E188943C dated 27 February 2023.

香港特別行政區政府地政總署測繪處©版權所有，未經許可，不得複製。

Survey and Mapping Office, Lands Department, The Government of HKSAR © Copyright reserved - reproduction by permission only.

#### 備註：

1. 發展項目的鳥瞰照片之副本可於開放時間向售樓處免費查閱。
2. 因技術原因（例如發展項目之形狀）、鳥瞰照片所顯示之範圍多於《一手住宅物業銷售條例》所要求顯示之範圍。
3. 賣方亦建議準買方到該發展地盤作實地考察，以獲取對該發展地盤、以及周邊地區的環境及附近的公共設施有較佳的了解。

#### Notes:

1. Copy of the aerial photograph of the Development is available for free inspection at the sales office(s) during opening hours.
2. Due to technical reasons (such as the shape of the Development), the aerial photograph has shown area more than that required under the Residential Properties (First-hand Sales) Ordinance.
3. The Vendor also advises prospective purchasers to conduct on-site visit for a better understanding of the development site, its surrounding environment and the public facilities nearby.