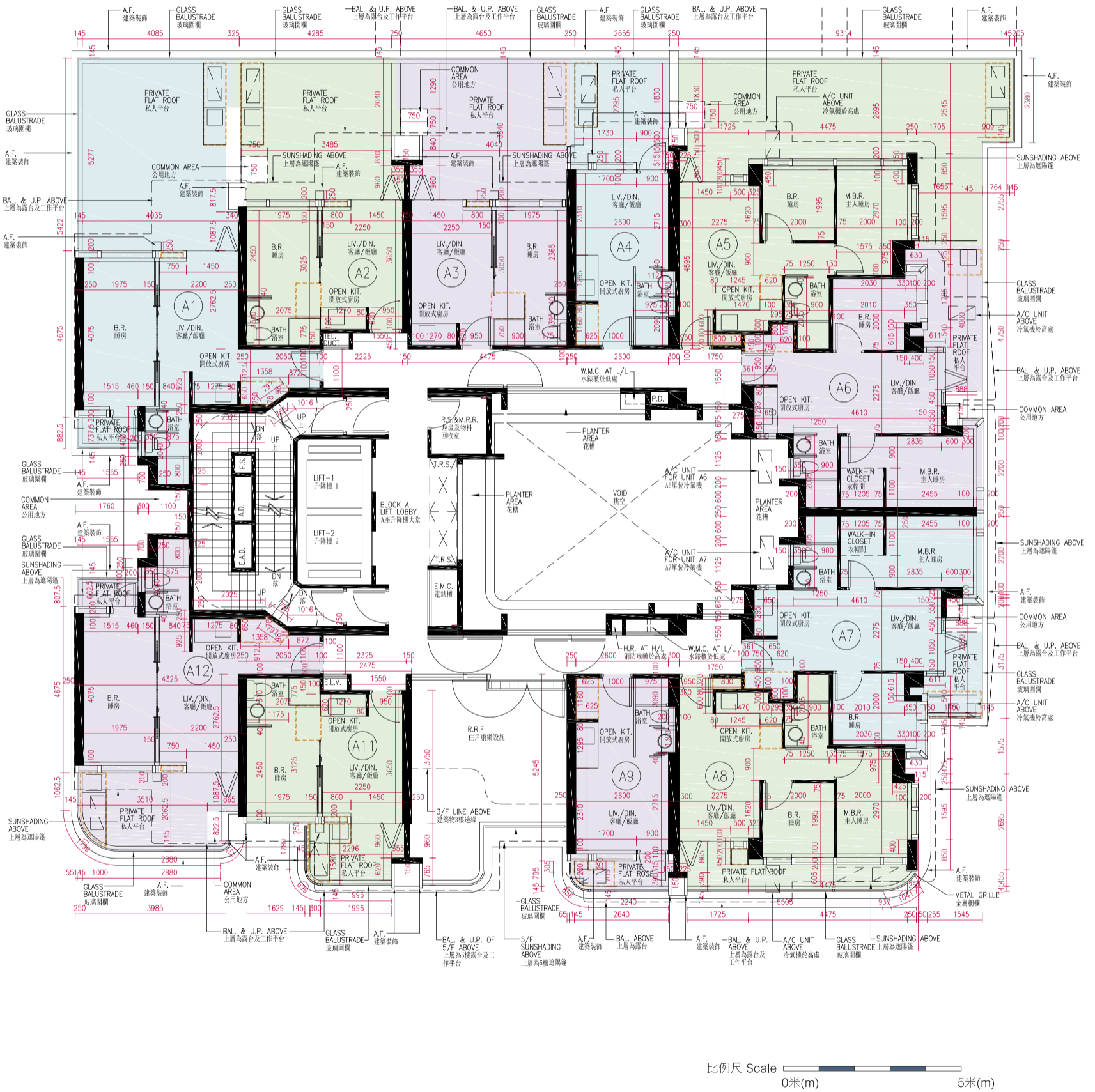


A座 BLOCK A

2樓平面圖 2/F FLOOR PLAN



備註：平面圖所列之數字為以毫米標示之建築結構尺寸。

Note: The dimensions in floor plans are all structural dimensions in millimeter.

座數 Block	樓層 Floor	單位 Flat	每個住宅物業的層與層之間的高度 (毫米) Floor-to-Floor Height of each residential property (mm)	每個住宅物業樓板(不包括灰泥)的厚度 (毫米) Thickness of Floor Slabs (excluding plaster) of each residential property (mm)
A座 Block A	2樓 2/F	A1	3100, 3200, 3500	150, 160
		A2	3100, 3500	150, 160
		A3	3100, 3200, 3500	150, 160
		A4	3100, 3200, 3500	150, 160
		A5	3100, 3200, 3500	150, 275
		A6	3200, 3500	125, 275
		A7	3200, 3500	125, 275
		A8	3100, 3200, 3500	150, 275
		A9	3100, 3200, 3500	150, 160
		A11	3100, 3500	150, 160
		A12	3100, 3200, 3500	150, 160

因住宅物業的較高樓層的結構牆的厚度遞減，較高樓層的內部面積，一般比較低樓層的內部面積稍大。

The internal areas of the residential properties on the upper floors will generally be slightly larger than those on the lower floors because of the reducing thickness of the structural walls on the upper floors.

請參閱本售樓說明書第40頁為住宅物業樓面平面圖而設之備註及圖例。

Please refer to page 40 of this sales brochure for the notes and legends for the floor plans of residential properties.

A座 BLOCK A

3樓、8樓至9樓平面圖

3/F, 8/F - 9/F FLOOR PLAN



備註：平面圖所列之數字為以毫米標示之建築結構尺寸。

Note: The dimensions in floor plans are all structural dimensions in millimeter.

座數 Block	樓層 Floor	單位 Flat	每個住宅物業的層與層之間的高度 (毫米) Floor-to-Floor Height of each residential property (mm)	每個住宅物業樓板(不包括灰泥)的厚度 (毫米) Thickness of Floor Slabs (excluding plaster) of each residential property (mm)
A座 Block A	3樓、8樓至9樓 3/F, 8/F-9/F	A1	3100, 3200, 3500	150, 160
		A2	3100, 3500	150, 160
		A3	3100, 3200, 3500	150, 160
		A4	3100, 3200, 3500	150, 160
		A5	3100, 3200, 3500	150, 275
		A6	3200, 3500	125, 275
		A7	3200, 3500	125, 275
		A8	3100, 3200, 3500	150, 275
		A9	3100, 3200, 3500	150, 160
		A11	3100, 3500	150, 160
		A12	3100, 3200, 3500	150, 160

因住宅物業的較高樓層的結構牆的厚度遞減，較高樓層的內部面積，一般比較低樓層的內部面積稍大。

The internal areas of the residential properties on the upper floors will generally be slightly larger than those on the lower floors because of the reducing thickness of the structural walls on the upper floors.

請參閱本售樓說明書第40頁為住宅物業樓面平面圖而設之備註及圖例。

Please refer to page 40 of this sales brochure for the notes and legends for the floor plans of residential properties.

A座 BLOCK A

5樓至7樓、10樓至12樓、15樓至23樓及25樓平面圖

5/F - 7/F, 10/F - 12/F, 15/F - 23/F and 25/F FLOOR PLAN



備註：平面圖所列之數字為以毫米標示之建築結構尺寸。

Note: The dimensions in floor plans are all structural dimensions in millimeter.

座數 Block	樓層 Floor	單位 Flat	每個住宅物業的層與層之間的高度 (毫米) Floor-to-Floor Height of each residential property (mm)	每個住宅物業樓板(不包括灰泥)的厚度 (毫米) Thickness of Floor Slabs (excluding plaster) of each residential property (mm)
A座 Block A	5樓至6樓、 10樓至12樓及 15樓至23樓 5/F - 6/F, 10/F-12/F and 15/F - 23/F	A1	3100, 3200, 3500	150, 160
		A2	3100, 3500	150, 160
		A3	3100, 3200, 3500	150, 160
		A4	3100, 3200, 3500	150, 160
		A5	3100, 3200, 3500	150, 275
		A6	3200, 3500	125, 275
		A7	3200, 3500	125, 275
		A8	3100, 3200, 3500	150, 275
		A9	3100, 3200, 3500	150, 160
		A10	3100, 3200, 3500	150, 160
		A11	3100, 3500	150, 160
		A12	3100, 3200, 3500	150, 160

座數 Block	樓層 Floor	單位 Flat	每個住宅物業的層與層之間的高度 (毫米) Floor-to-Floor Height of each residential property (mm)	每個住宅物業樓板(不包括灰泥)的厚度 (毫米) Thickness of Floor Slabs (excluding plaster) of each residential property (mm)
A座 Block A	7樓 7/F	A1	3100, 3200, 3500	150, 160
		A2	3100, 3500	150, 160
		A3	3100, 3200, 3500	150, 160
		A4	3100, 3200, 3500	150, 160
		A5	3100, 3200, 3500	150, 275
		A6	3200, 3500	125, 275
		A7	3200, 3500	125, 275
		A8	3100, 3200, 3500	150, 275
		A9	3100, 3200, 3500	150, 160
		A10	3100, 3500	150, 160
		A11	3100, 3500	150, 160
		A12	3100, 3200, 3500	150, 160

座數 Block	樓層 Floor	單位 Flat	每個住宅物業的層與層之間的高度 (毫米) Floor-to-Floor Height of each residential property (mm)	每個住宅物業樓板(不包括灰泥)的厚度 (毫米) Thickness of Floor Slabs (excluding plaster) of each residential property (mm)
A座 Block A	25樓 25/F	A1	3050, 3100, 3150, 3500	150, 160
		A2	3245, 3395	150, 160
		A3	3245, 3395	150, 160
		A4	3200, 3245, 3395	150, 160
		A5	3245, 3395, 3500	150, 160, 415
		A6	3100, 3245, 3500	125, 275, 415
		A7	3100, 3245, 3500	125, 275, 415
		A8	3245, 3395, 3500	150, 160, 415
		A9	3200, 3245, 3395	150, 160
		A10	3245, 3395	150, 160
		A11	3245, 3395	150, 160
		A12	3050, 3100, 3150, 3500	150, 160

因住宅物業的較高樓層的結構牆的厚度遞減，較高樓層的內部面積，一般比較低樓層的內部面積稍大。

The internal areas of the residential properties on the upper floors will generally be slightly larger than those on the lower floors because of the reducing thickness of the structural walls on the upper floors.

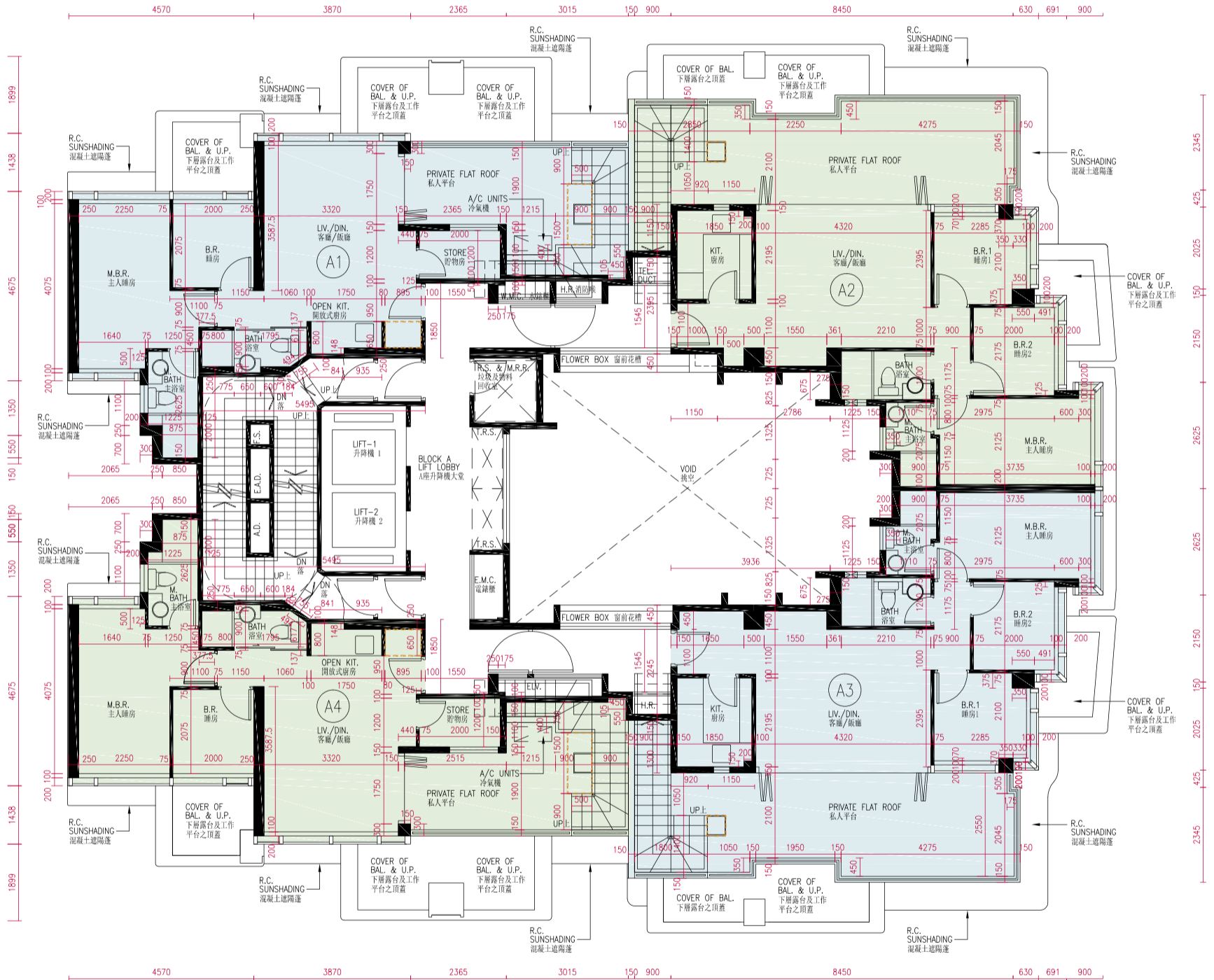
請參閱本售樓說明書第40頁為住宅物業樓面平面圖而設之備註及圖例。

Please refer to page 40 of this sales brochure for the notes and legends for the floor plans of residential properties.

A座 BLOCK A

26樓平面圖

26/F FLOOR PLAN



比例尺 Scale 0米(m) 5米(m)

備註：平面圖所列之數字為以毫米標示之建築結構尺寸。

Note: The dimensions in floor plans are all structural dimensions in millimeter.

10

發展項目的住宅物業的樓面平面圖

FLOOR PLANS OF RESIDENTIAL PROPERTIES IN THE DEVELOPMENT

座數 Block	樓層 Floor	單位 Flat	每個住宅物業的層與層之間的高度 (毫米) Floor-to-Floor Height of each residential property (mm)	每個住宅物業樓板(不包括灰泥)的厚度 (毫米) Thickness of Floor Slabs (excluding plaster) of each residential property (mm)
A座 Block A	26樓 26/F	A1	4000	150, 175, 200
		A2	4000	150, 175, 275
		A3	4000	150, 175, 275
		A4	4000	150, 175, 200

因住宅物業的較高樓層的結構牆的厚度遞減，較高樓層的內部面積，一般比較低樓層的內部面積稍大。

The internal areas of the residential properties on the upper floors will generally be slightly larger than those on the lower floors because of the reducing thickness of the structural walls on the upper floors.

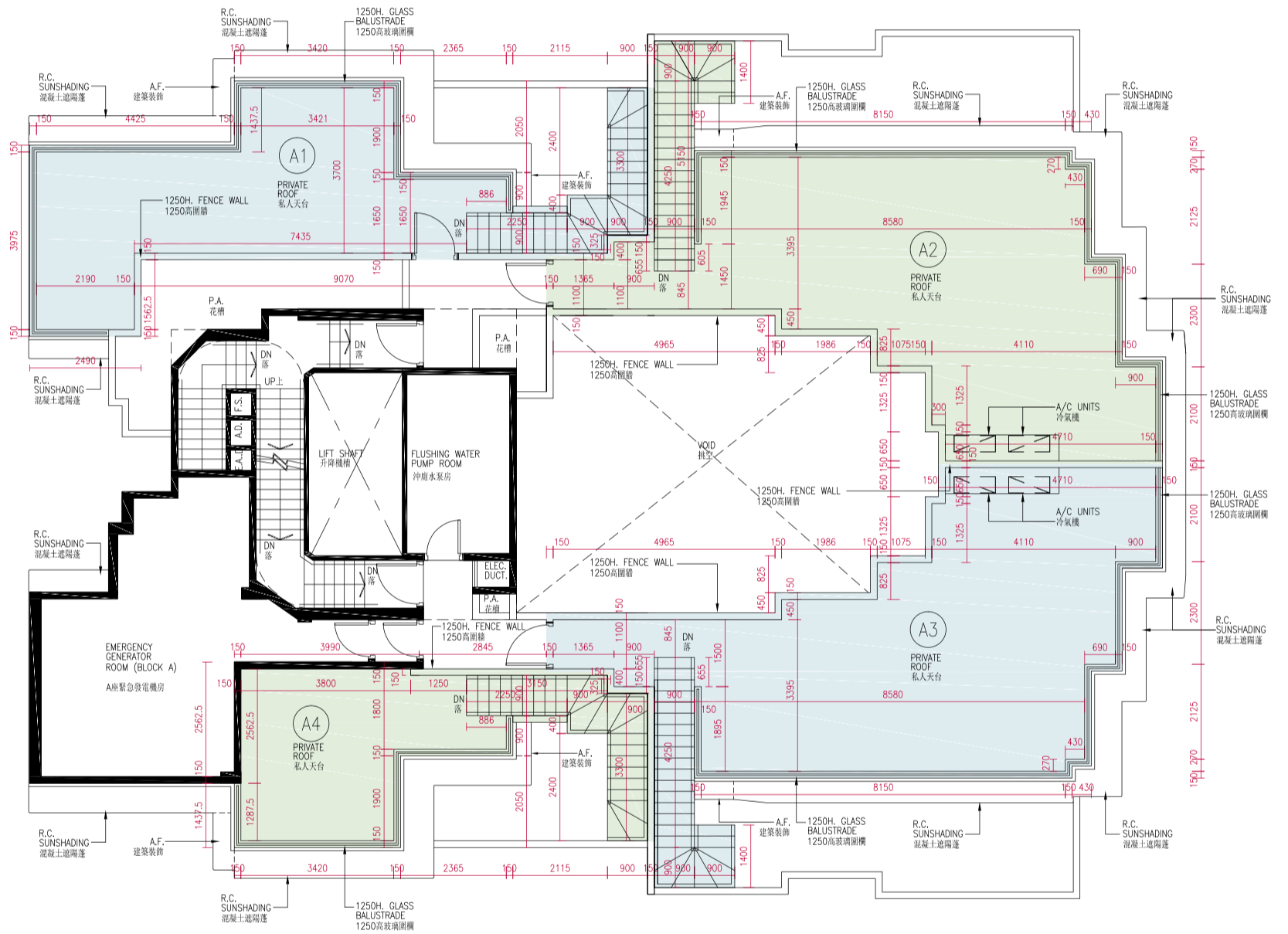
請參閱本售樓說明書第40頁為住宅物業樓面平面圖而設之備註及圖例。

Please refer to page 40 of this sales brochure for the notes and legends for the floor plans of residential properties.

A座 BLOCK A

天台平面圖

R/F FLOOR PLAN



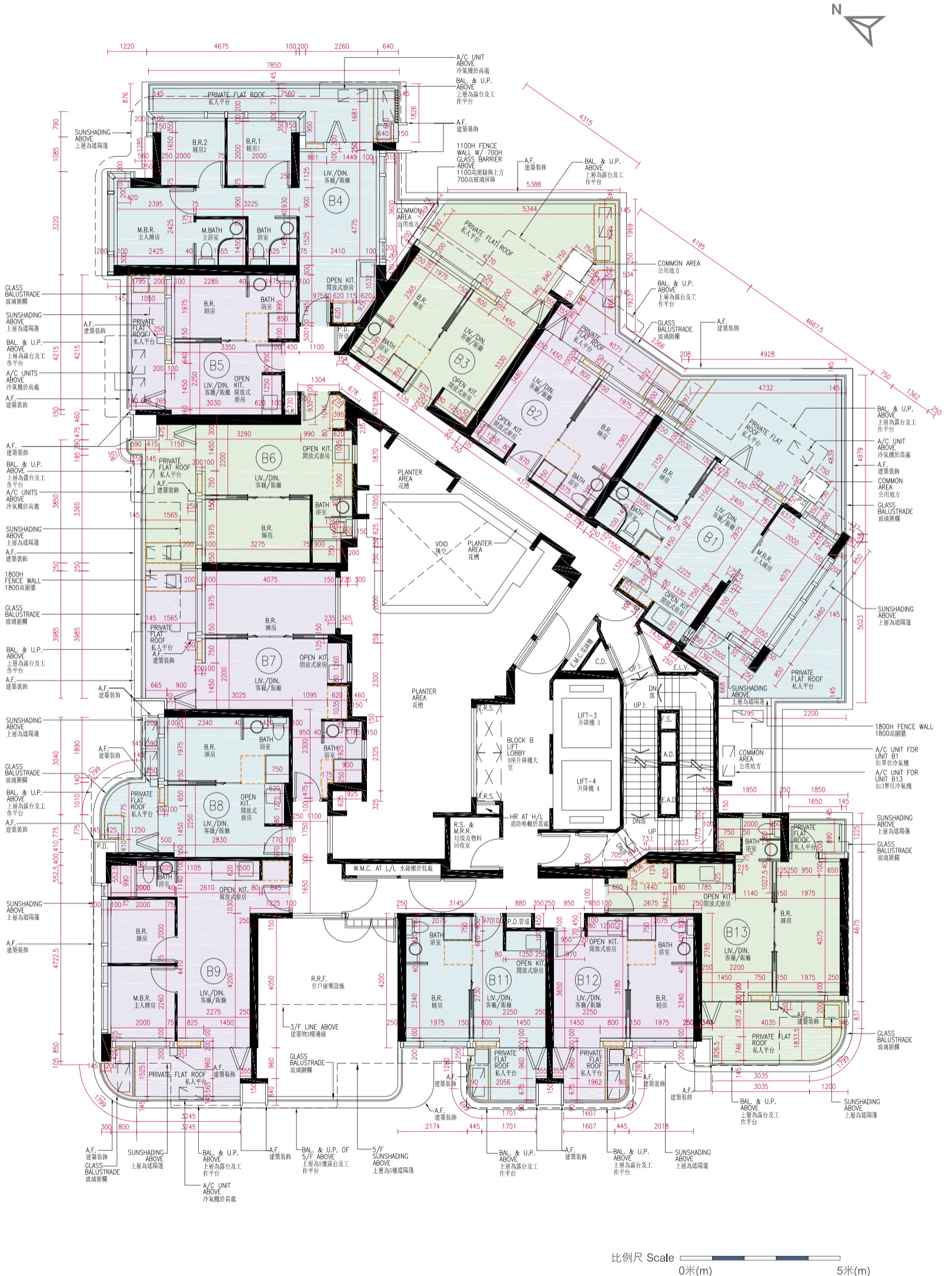
比例尺 Scale 0米(m) 5米(m)

備註：平面圖所列之數字為以毫米標示之建築結構尺寸。

Note: The dimensions in floor plans are all structural dimensions in millimeter.

B座 BLOCK B

2樓平面圖 2/F FLOOR PLAN



座數 Block	樓層 Floor	單位 Flat	每個住宅物業的層與層之間的高度 (毫米) Floor-to-Floor Height of each residential property (mm)	每個住宅物業樓板(不包括灰泥)的厚度 (毫米) Thickness of Floor Slabs (excluding plaster) of each residential property (mm)
B座 Block B	2樓 2/F	B1	3100, 3200, 3500	150, 160
		B2	3100, 3200, 3500	150, 160
		B3	3100, 3200, 3500	150, 160
		B4	3050, 3200, 3500	150, 160, 275
		B5	3100, 3200, 3500	150, 160
		B6	3200, 3500	150, 160
		B7	3200, 3500	150, 160, 300
		B8	3100, 3500	150, 160
		B9	3100, 3200, 3500	150, 160
		B11	3100, 3500	150, 160
		B12	3100, 3500	150, 160
		B13	3100, 3200, 3500	150, 160

因住宅物業的較高樓層的結構牆的厚度遞減，較高樓層的內部面積，一般比較低樓層的內部面積稍大。

The internal areas of the residential properties on the upper floors will generally be slightly larger than those on the lower floors because of the reducing thickness of the structural walls on the upper floors.

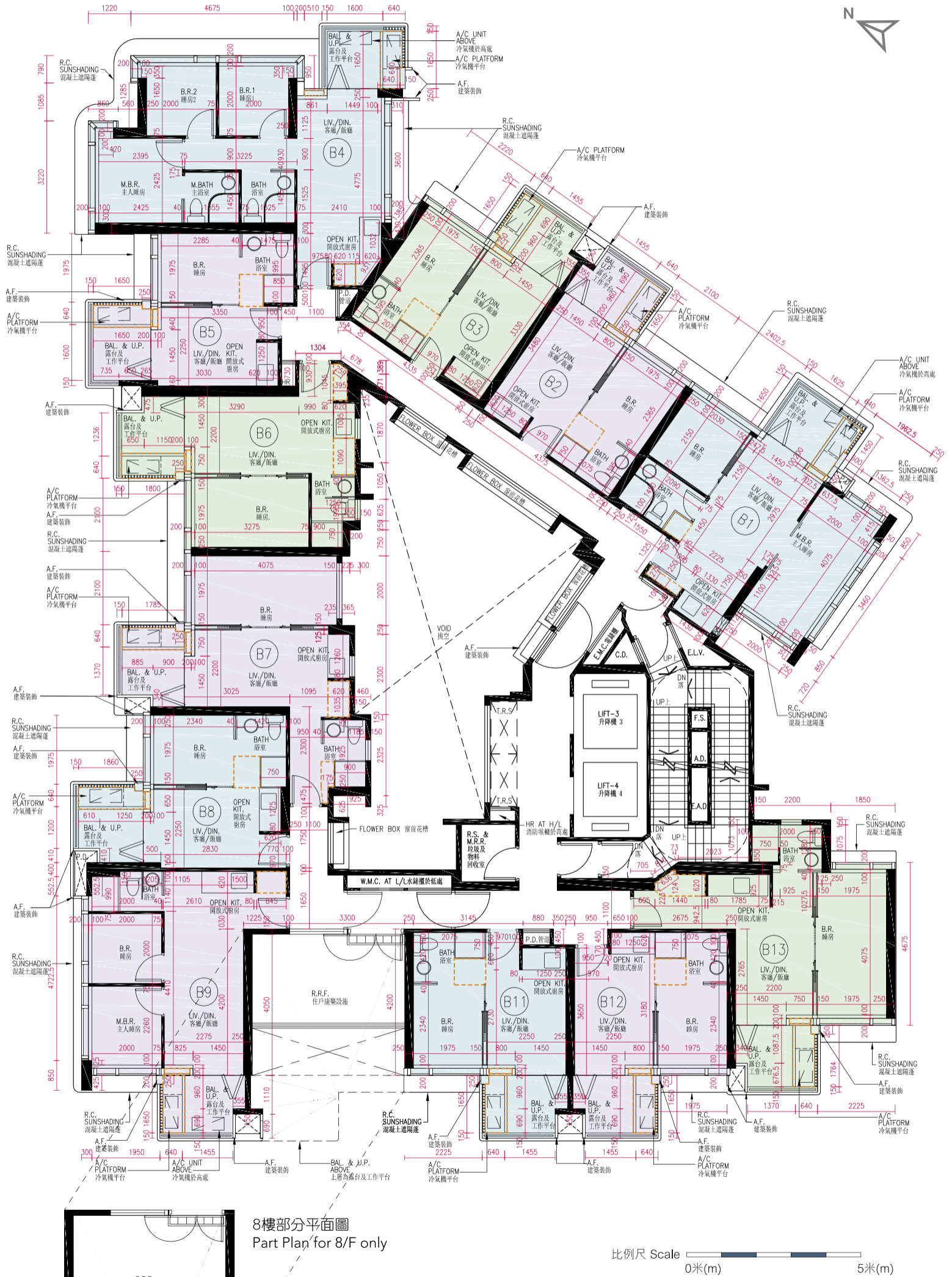
請參閱本售樓說明書第40頁為住宅物業樓面平面圖而設之備註及圖例。

Please refer to page 40 of this sales brochure for the notes and legends for the floor plans of residential properties.

B座 BLOCK B

3樓、8樓至9樓平面圖

3/F, 8/F - 9/F FLOOR PLAN



8樓部分平面圖
Part Plan for 8/F only

備註：平面圖所列之數字為以毫米標示之建築結構尺寸。

Note: The dimensions in floor plans are all structural dimensions in millimeter.

座數 Block	樓層 Floor	單位 Flat	每個住宅物業的層與層之間的高度 (毫米) Floor-to-Floor Height of each residential property (mm)	每個住宅物業樓板(不包括灰泥)的厚度 (毫米) Thickness of Floor Slabs (excluding plaster) of each residential property (mm)
B座 Block B	3樓、8樓至9樓 3/F, 8/F - 9/F	B1	3100, 3200, 3500	150, 160
		B2	3100, 3200, 3500	150, 160
		B3	3100, 3200, 3500	150, 160
		B4	3050, 3200, 3500	150, 160, 275
		B5	3100, 3200, 3500	150, 160
		B6	3200, 3500	150, 160
		B7	3200, 3500	150, 160, 300
		B8	3100, 3500	150, 160
		B9	3100, 3200, 3500	150, 160
		B11	3100, 3500	150, 160
		B12	3100, 3500	150, 160
		B13	3100, 3200, 3500	150, 160

因住宅物業的較高樓層的結構牆的厚度遞減，較高樓層的內部面積，一般比較低樓層的內部面積稍大。

The internal areas of the residential properties on the upper floors will generally be slightly larger than those on the lower floors because of the reducing thickness of the structural walls on the upper floors.

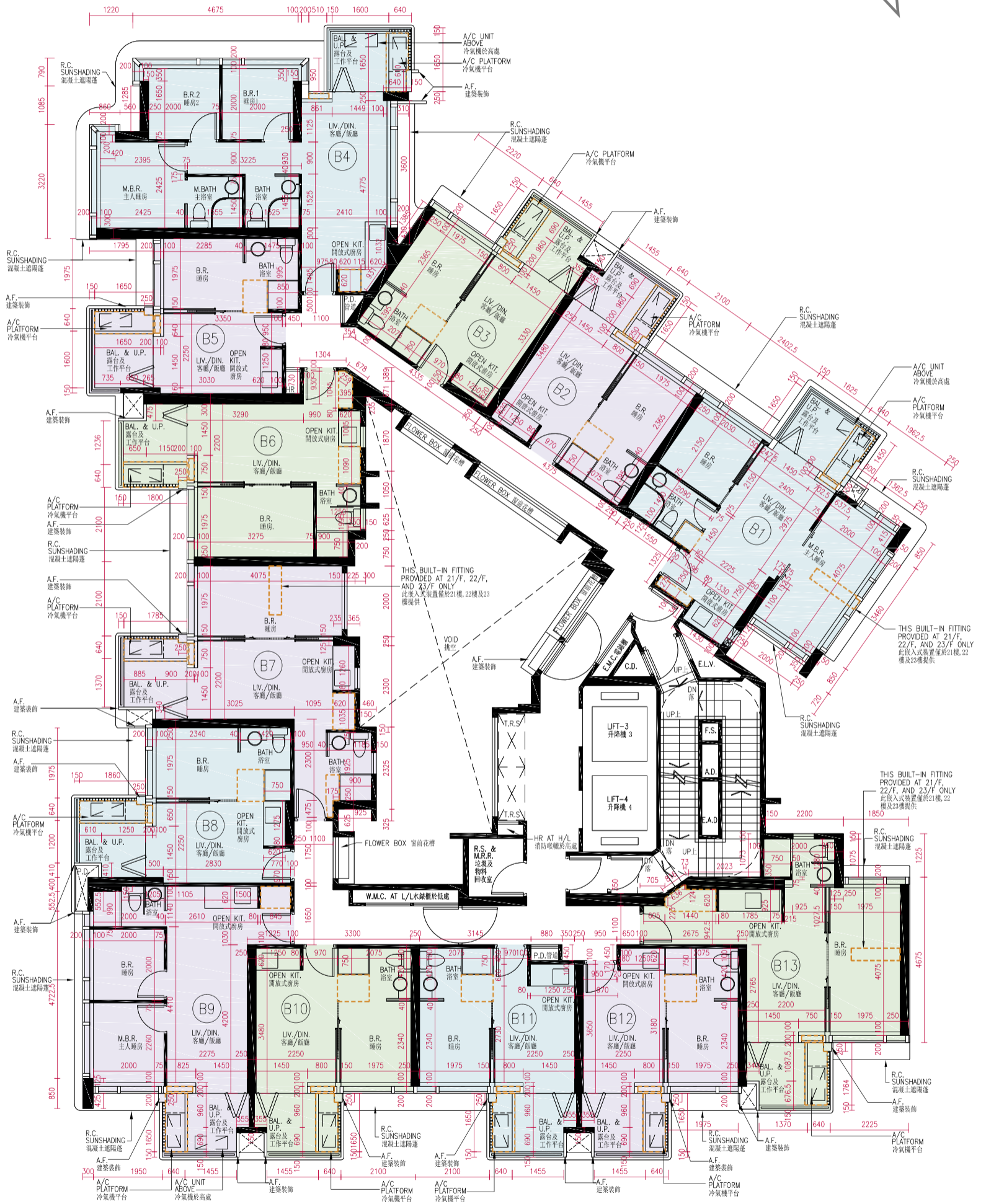
請參閱本售樓說明書第40頁為住宅物業樓面平面圖而設之備註及圖例。

Please refer to page 40 of this sales brochure for the notes and legends for the floor plans of residential properties.

B座 BLOCK B

5樓至7樓、10樓至12樓及15樓至23樓

5/F - 7/F, 10/F-12/F and 15/F - 23/F FLOOR PLAN



備註：平面圖所列之數字為以毫米標示之建築結構尺寸。

Note: The dimensions in floor plans are all structural dimensions in millimeter.

座數 Block	樓層 Floor	單位 Flat	每個住宅物業的層與層之間的高度 (毫米) Floor-to-Floor Height of each residential property (mm)	每個住宅物業樓板(不包括灰泥)的厚度 (毫米) Thickness of Floor Slabs (excluding plaster) of each residential property (mm)
B座 Block B	5樓至6樓、 10樓至12樓及 15樓至22樓 5/F - 6/F, 10 - 12/F and 15/F - 22/F	B1	3100, 3200, 3500	150, 160
		B2	3100, 3200, 3500	150, 160
		B3	3100, 3200, 3500	150, 160
		B4	3050, 3200, 3500	150, 160, 275
		B5	3100, 3200, 3500	150, 160
		B6	3200, 3500	150, 160
		B7	3200, 3500	150, 160, 300
		B8	3100, 3500	150, 160
		B9	3100, 3200, 3500	150, 160
		B10	3100, 3200, 3500	150, 160
		B11	3100, 3500	150, 160
		B12	3100, 3500	150, 160
		B13	3100, 3200, 3500	150, 160

座數 Block	樓層 Floor	單位 Flat	每個住宅物業的層與層之間的高度 (毫米) Floor-to-Floor Height of each residential property (mm)	每個住宅物業樓板(不包括灰泥)的厚度 (毫米) Thickness of Floor Slabs (excluding plaster) of each residential property (mm)
B座 Block B	7樓 7/F	B1	3100, 3200, 3500	150, 160
		B2	3100, 3200, 3500	150, 160
		B3	3100, 3200, 3500	150, 160
		B4	3050, 3200, 3500	150, 160, 275
		B5	3100, 3200, 3500	150, 160
		B6	3200, 3500	150, 160
		B7	3200, 3500	150, 160, 300
		B8	3100, 3500	150, 160
		B9	3100, 3200, 3500	150, 160
		B10	3100, 3500	150, 160
		B11	3100, 3500	150, 160
		B12	3100, 3500	150, 160
		B13	3100, 3200, 3500	150, 160

座數 Block	樓層 Floor	單位 Flat	每個住宅物業的層與層之間的高度 (毫米) Floor-to-Floor Height of each residential property (mm)	每個住宅物業樓板(不包括灰泥)的厚度 (毫米) Thickness of Floor Slabs (excluding plaster) of each residential property (mm)
B座 Block B	23樓 23/F	B1	3200, 3245, 3395, 3500	150, 160
		B2	3100, 3500	150, 160
		B3	3100, 3500	150, 160
		B4	3245, 3395	150, 160, 275
		B5	3150, 3500	150, 160
		B6	3100, 3500	150, 160
		B7	3100, 3500	150, 160, 300
		B8	3100, 3500	150, 160
		B9	3100, 3200, 3500	150, 160
		B10	3100, 3200, 3500	150, 160
		B11	3100, 3500	150, 160
		B12	3100, 3500	150, 160
		B13	3100, 3200, 3500	150, 160

因住宅物業的較高樓層的結構牆的厚度遞減，較高樓層的內部面積，一般比較低樓層的內部面積稍大。

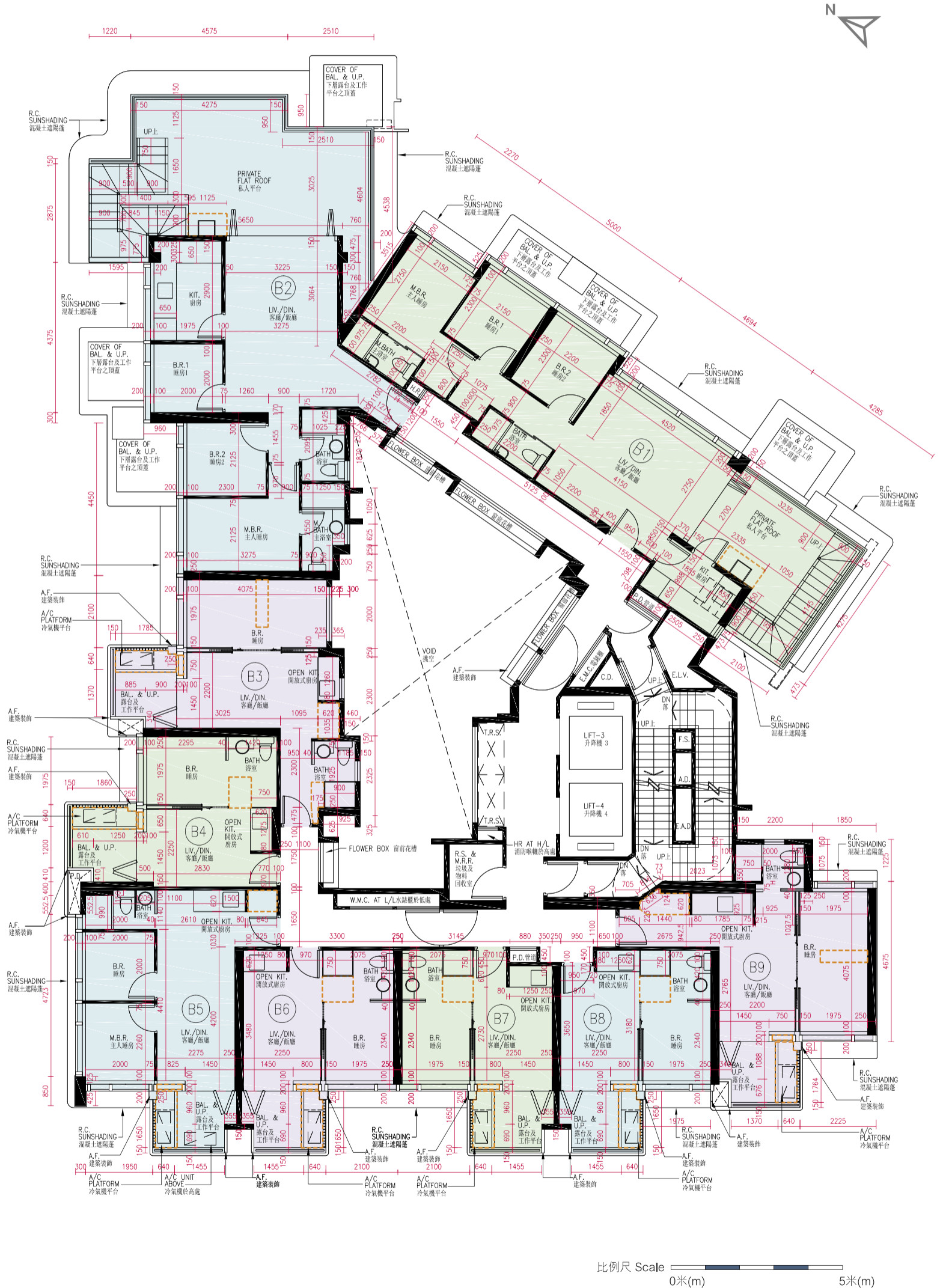
The internal areas of the residential properties on the upper floors will generally be slightly larger than those on the lower floors because of the reducing thickness of the structural walls on the upper floors.

請參閱本售樓說明書第40頁為住宅物業樓面平面圖而設之備註及圖例。

B座 BLOCK B

25樓平面圖

25/F FLOOR PLAN



備註：平面圖所列之數字為以毫米標示之建築結構尺寸。

Note: The dimensions in floor plans are all structural dimensions in millimeter.

座數 Block	樓層 Floor	單位 Flat	每個住宅物業的層與層之間的高度 (毫米) Floor-to-Floor Height of each residential property (mm)	每個住宅物業樓板(不包括灰泥)的厚度 (毫米) Thickness of Floor Slabs (excluding plaster) of each residential property (mm)
B座 Block B	25樓 25/F	B1	4000	175, 200, 400
		B2	4000	175, 200, 350
		B3	4000	175, 300
		B4	4000	175
		B5	4000	175
		B6	4000	175
		B7	4000	175
		B8	4000	175
		B9	3875, 4000	175

因住宅物業的較高樓層的結構牆的厚度遞減，較高樓層的內部面積，一般比較低樓層的內部面積稍大。

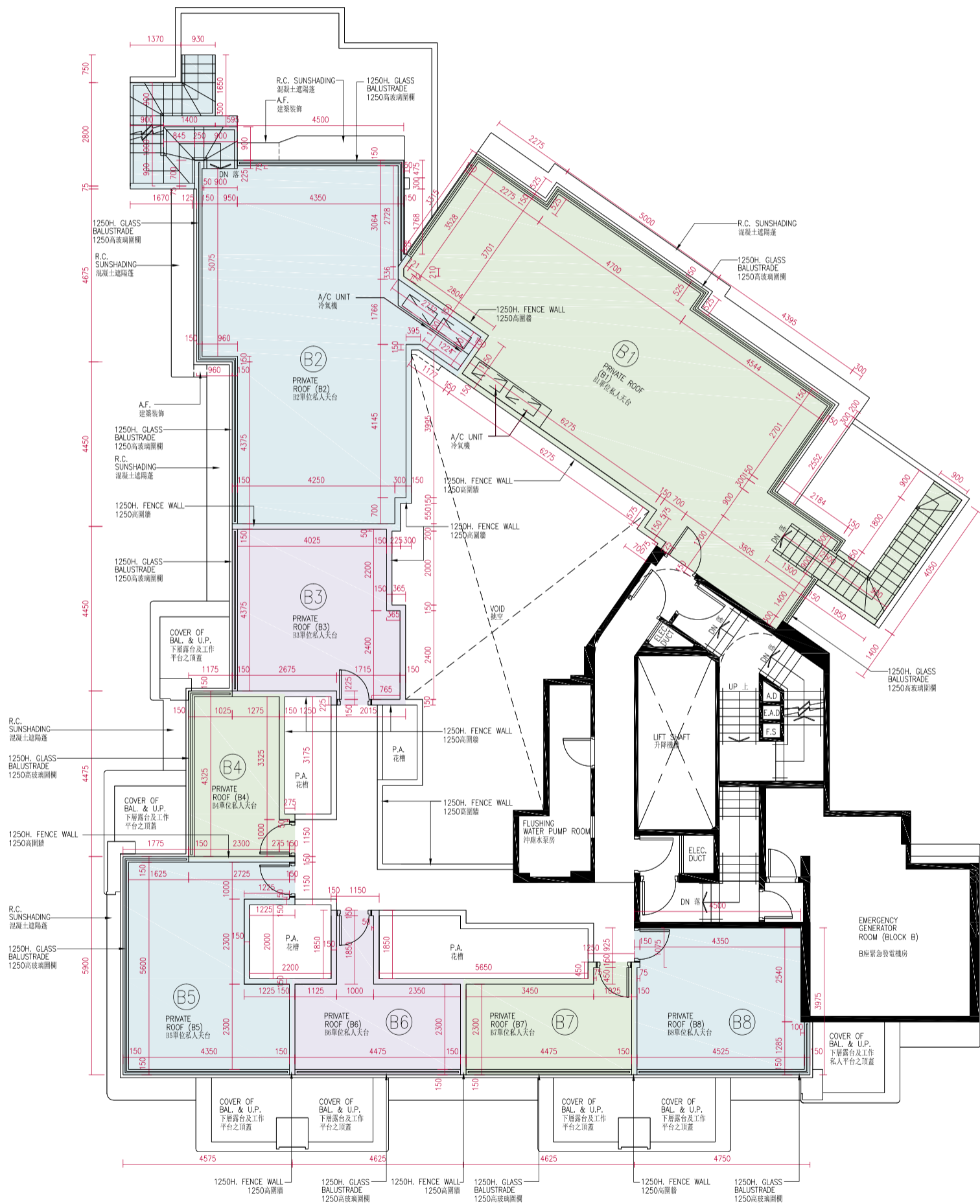
The internal areas of the residential properties on the upper floors will generally be slightly larger than those on the lower floors because of the reducing thickness of the structural walls on the upper floors.

請參閱本售樓說明書第40頁為住宅物業樓面平面圖而設之備註及圖例。

Please refer to page 40 of this sales brochure for the notes and legends for the floor plans of residential properties.

B座 BLOCK B

天台 R/F FLOOR PLAN



比例尺 Scale 0米(m) 5米(m)

備註：平面圖所列之數字為以毫米標示之建築結構尺寸。

Note: The dimensions in floor plans are all structural dimensions in millimeter.

在本頁上之備註和圖例適用於全部的「發展項目的住宅物業的樓面平面圖」頁數。

The notes and legends on this page apply to all pages of "Floor plans of residential properties in the Development".

樓面平面圖圖例

Legends of the Floor Plans

A/C UNIT	=	冷氣機 Air-conditioner Unit
A.D.	=	鮮風槽 Air Duct
A/C PLATFORM	=	冷氣機平台 Air-conditioner Platform
A.F.	=	建築裝飾 Architectural Feature
BAL.	=	露台 Balcony
BAL. & U.P. ABOVE	=	上層為露台 Balcony and Utility Platform Above
BAL. ABOVE	=	上層為露台 Balcony Above
BATH	=	浴室 Bathroom
B.R.	=	睡房 Bedroom
B.R.1	=	睡房1 Bedroom 1
B.R.2	=	睡房2 Bedroom 2
COVER OF BAL.	=	下層露台之頂蓋 Cover of Balcony
COVER OF BAL. & U.P.	=	下層露台及工作平台之頂蓋 Cover of Balcony and Utility Platform
C.D.	=	電纜槽 Cable Duct
DN	=	落 Down
E.A.D.	=	排風槽 Exhaust Air Duct
E.L.V.	=	特低壓電線槽 Extra Low Voltage Cable Duct
ELEC. DUCT	=	電線槽 Electric Duct
F.S.	=	消防裝置槽 Fire Service Duct
FLOWER BOX	=	窗前花槽 Flower Box
H/L	=	高處 High Level
H.R.	=	消防喉轆 Hose Reel
KIT.	=	廚房 Kitchen
LIV. / DIN.	=	客廳 / 飯廳 Living Room / Dining Room
L/L	=	低處 Low Level
M.B.R.	=	主人睡房 Master Bedroom
M. BATH	=	主浴室 Master Bathroom
OPEN KIT.	=	開放式廚房 Open Kitchen
P.A.	=	花槽 Planter Area
P.D.	=	管道槽 Pipe Duct
R.C. SUNSHADING	=	混凝土遮陽蓬 Reinforced Concrete Sunshading Device
R.R.F.	=	住戶康樂設施 Residential Recreational Facility
R.S. & M.R.R.	=	垃圾及物料回收室 Refuse Storage and Material Recovery Room
STORE	=	貯物房 Store Room
TEL. DUCT	=	電訊線路槽 Telecommunication Cable Duct
T.R.S.	=	臨時庇護處 Temporary Refuge Space
U.P.	=	工作平台 Utility Platform
UP	=	上 Up
VOID	=	挑空 Void
WALK-IN CLOSET	=	衣帽間 Walk-in Closet
W.M.C.	=	水錶櫃 Water Meter Cabinet
E.M.C.	=	電錶櫃 Electrical Meter Cabinet
	=	隨樓附送之嵌入式裝置 Built-in fittings provided in the properties

備註：

1. 部分住宅物業的露台、工作平台、平台或外牆或設有外露之公用喉管，或外牆裝飾板內藏之公用喉管。
2. 部分住宅物業內之部分天花或有跌級樓板，用以安裝上層之機電設備或配合上層之結構、建築設計及/或裝修設計上的需要。
3. 部分住宅物業內或設有假陣或假天花用以安裝冷氣喉管及/或其他機電設備。
4. 樓面平面圖所列之數字為以毫米標示之建築結構尺寸。
5. 各住宅物業的樓面平面圖內所展示之裝置及設備的圖標如浴缸、洗面盆、座廁、淋浴間、洗滌盆、櫃(如有)等乃根據最新經批准的建築圖則擬備，其形狀、尺寸、比例或與實際提供的裝置及設備存在差異，僅供示意及參考之用。
6. 不設4樓、13樓、14樓及24樓。

Notes:

1. Common pipes exposed or enclosed in cladding may be located at the balcony, utility platform, flat roof or external wall of some residential properties.
2. There may be sunken slabs at some parts of the ceiling inside some residential properties for the installation of mechanical and electrical services of the floor above or due to the structural, architectural and/or decoration design requirements of the floor above.
3. There may be ceiling bulkheads or false ceiling inside some residential properties for the installation of air-conditioning conduits and/or other mechanical and electrical services.
4. The dimensions of the floor plans are all structural dimensions in millimeter.
5. Those icons of fittings and appliances shown on the floor plans of residential properties like bathtubs, wash basins, water closets, shower cubicles, sink units, cabinets (if any) etc. are prepared in accordance with the latest approved building plans. Their shapes, dimensions, scales may be differed from the fittings and appliances actually provided and they are for indication and reference only.
6. 4/F, 13/F, 14/F and 24/F are omitted.