

FLOOR PLANS OF RESIDENTIAL PROPERTIES IN THE PHASE 期數的住宅物業的樓面平面圖

LEGEND OF THE TERMS AND ABBREVIATIONS USED ON FLOOR PLANS

樓面平面圖中所使用之名詞及簡稱之圖例

AC PLINTH	=	AIR-CONDITIONER PLINTH	冷氣機台
ACP	=	AIR-CONDITIONER PLATFORM	冷氣機平台
AF	=	ARCHITECTURAL FEATURE	建築裝飾
AL.C	=	ALUMINIUM PIPE COVER AT LOW LEVEL	位於低位鋁質管道覆蓋
ALUM. AF	=	ALUMINIUM ARCHITECTURAL FEATURE	鋁質建築裝飾
ALUM. CLAD	=	ALUMINIUM CLADDING	鋁質覆蓋層板
B	=	BATHROOM	浴室
B2	=	BATHROOM 2	浴室2
B3	=	BATHROOM 3	浴室3
BAL	=	BALCONY	露台
BAL ABOVE	=	BALCONY ABOVE	露台置上
BAL & UP ABOVE	=	BALCONY & UTILITY PLATFORM ABOVE	露台及工作平台置上
BUILDING LINE ABOVE AT 45/F	=	BUILDING LINE ABOVE AT 45/F	建築物界線置上在45樓
BUILDING LINE ABOVE AT 46/F	=	BUILDING LINE ABOVE AT 46/F	建築物界線置上在46樓
BR2	=	BEDROOM 2	睡房2
BR3	=	BEDROOM 3	睡房3
BR4	=	BEDROOM 4	睡房4
BW	=	BAY WINDOW	窗台
CANOPY	=	CANOPY	簷篷
CANOPY ABOVE	=	CANOPY ABOVE	簷篷置上
COMMON AREA	=	COMMON AREA	公共範圍
COMMON FLAT ROOF	=	COMMON FLAT ROOF	公共平台
CW	=	CURTAIN WALL	幕牆
DH / DOG HOUSE	=	DOG HOUSE	室外管道檢修井
D	=	DOWN	落
EAD	=	EXHAUST AIR DUCT	排氣管道
ELV / ELV.	=	EXTRA LOW VOLTAGE DUCT	低電壓管道
EMC	=	ELECTRIC METER CABINET	電錶櫃
EMR	=	ELECTRIC METER ROOM	電錶房
FLAT ROOF	=	FLAT ROOF	平台
FSD	=	FIRE SERVICE DUCT	消防管道
HR	=	HOSE REEL	消防喉轆
KIT	=	KITCHEN	廚房
LAV	=	LAVATORY	洗手間
LIFT	=	LIFT	升降機
LIFT MACHINE ROOM	=	LIFT MACHINE ROOM	升降機機房
LIV/ DIN	=	LIVING ROOM AND DINING ROOM	客廳及飯廳
MB	=	MASTER BATHROOM	主人浴室
MBR	=	MASTER BEDROOM	主人睡房
M.S.	=	MAINTENANCE ACCESS SPACE FOR GONDOLA	供吊船使用之維修通道空間
O. KIT	=	OPEN KITCHEN	開放式廚房
P.	=	PLANTER	花槽
PD	=	PIPE DUCT	管道
POWDER	=	POWDER ROOM	化妝室
RS&MRR	=	REFUSE STORAGE AND MATERIAL RECOVERY ROOM	垃圾及物料回收室

FLOOR PLANS OF RESIDENTIAL PROPERTIES IN THE PHASE

期數的住宅物業的樓面平面圖

SINK	=	SINK	洗滌盆
STO	=	STORE ROOM	儲物房
TOP OF BAL	=	TOP OF BALCONY	露台上蓋
TOP OF BAL & UP	=	TOP OF BALCONY & UTILITY PLATFORM	露台及工作平台上蓋
TOP OF CW	=	TOP OF CURTAIN WALL	幕牆上蓋
TOWER 2A LIFT LOBBY	=	TOWER 2A LIFT LOBBY	第2A座升降機大堂
TOWER 2B LIFT LOBBY	=	TOWER 2B LIFT LOBBY	第2B座升降機大堂
TOWER 3A LIFT LOBBY	=	TOWER 3A LIFT LOBBY	第3A座升降機大堂
TOWER 3B LIFT LOBBY	=	TOWER 3B LIFT LOBBY	第3B座升降機大堂
UP	=	UTILITY PLATFORM	工作平台
U	=	UP	上
UTI.	=	UTILITY ROOM	工作間
V.D.	=	VENTILATION DUCT	通風管道
WMC	=	WATER METER CABINET	水錶櫃
A.BAL.1 (7-8/F ONLY)	=	ENHANCED ACOUSTIC BALCONY (BAFFLE TYPE) (TYPE 1) (7-8/F ONLY)	強效減音露台(擋音式)(款式1)(只限7至8樓)
AW2	=	ACOUSTIC WINDOW (BAFFLE TYPE) WITHOUT MICRO-PERFORATED ABSORPTION PANEL	減音窗(擋音式)沒有微孔吸音板
AW2 (5-12/F ONLY)	=	ACOUSTIC WINDOW (BAFFLE TYPE) WITHOUT MICRO-PERFORATED ABSORPTION PANEL (5-12/F ONLY)	減音窗(擋音式)沒有微孔吸音板(只限5至12樓)
AW2 (5-12/F & 15/F ONLY)	=	ACOUSTIC WINDOW (BAFFLE TYPE) WITHOUT MICRO-PERFORATED ABSORPTION PANEL (5-12/F & 15/F ONLY)	減音窗(擋音式)沒有微孔吸音板(只限5至12樓和15樓)
AW2 (5-12/F & 15-17/F ONLY)	=	ACOUSTIC WINDOW (BAFFLE TYPE) WITHOUT MICRO-PERFORATED ABSORPTION PANEL (5-12/F & 15-17/F ONLY)	減音窗(擋音式)沒有微孔吸音板(只限5至12樓和15至17樓)
M.W. (7-10/F ONLY)	=	FIXED WINDOW WITH MAINTENANCE WINDOW (NOT FOR VENTILATION USE) (7-10/F ONLY)	固定窗戶連維修窗(不作通風用途)(只限7至10樓)

Notes:

- There may be architectural features on external walls of some floors.
- Common pipes exposed and/ or enclosed in cladding are located at/ adjacent to balcony and/ or flat roof and/ or utility platform and/ or air-conditioning platform and/ or external wall of some residential units.
- There are sunken slabs and/ or ceiling bulkheads and/ or false ceiling at living rooms, dining rooms, bedrooms, utility rooms, corridors, bathrooms, store rooms, lavatories, open kitchens and kitchens of some residential units for the air-conditioning system and/ or mechanical and electrical services. There are exposed pipes and/ or ductings for air-conditioning system and/ or mechanical and electrical services within some utility rooms.
- Balconies and utility platforms are non-enclosed areas.
- Symbols of fittings and fitments shown on the floor plans, such as bathtubs, sink, water closets, shower, sink counter etc, are architectural symbols extracted from the latest approved general building plans for general indication only.
- There are non-structural prefabricated external walls and curtain walls in the residential units. The saleable area as defined in the Formal Agreement for Sale and Purchase of a residential unit has included the area of the non-structural prefabricated external walls and curtain walls, and is measured from the exterior of such non-structural prefabricated external walls and curtain walls.

附註:

- 部份樓層外牆設有建築裝飾。
- 部份住宅單位的露台及 / 或平台及 / 或工作平台及 / 或冷氣機平台及 / 或外牆設有外露及 / 或面板內藏之公用喉管。
- 部份住宅單位的客廳、飯廳、睡房、工作間、走廊、浴室、儲物房、洗手間、開放式廚房以及廚房天花板有跌級樓板及 / 或假陣及 / 或假天花用以裝置冷氣系統及 / 或機電設備。部份工作間內設有冷氣系統及 / 或機電設備之外露喉管及 / 或管道。
- 露台及工作平台為不可封閉的地方。
- 樓面平面圖上所顯示的形象裝置符號例如浴缸、洗滌盆、坐廁、花灑、洗滌盆櫃等乃摘自最新的經批准的建築圖則，只作一般性標誌。
- 住宅單位有非結構的預製外牆及幕牆。住宅單位之正式買賣合約內所定義之實用面積已包括非結構的預製外牆及幕牆的面積，並由該非結構的預製外牆及幕牆之外圍起計。

FLOOR PLANS OF RESIDENTIAL PROPERTIES IN THE PHASE

期數的住宅物業的樓面平面圖

Notes:

7. During the necessary maintenance of the external wall of Tower 2 (Tower 2A & 2B) and Tower 3 (Tower 3A & 3B) arranged by the Manager of the Phase, the gondola will be operating in the airspace outside windows and above and on the roof / flat roof / the parapet walls.
8. Noise mitigation measures include fixed glazing with maintenance window(s) (not for ventilation purpose), acoustic window(s) (baffle type) (type 2) without micro-perforated absorption panel and enhanced acoustic balcony(ies) (baffle type) (type 1) applied to selected residential properties of the Phase. Prospective purchasers should refer to the Floor Plans of Residential Properties in the Phase for the location of the fixed glazing with maintenance window(s) (not for ventilation purpose), acoustic window(s) (baffle type) (type 2) without micro-perforated absorption panel and enhanced acoustic balcony(ies) (baffle type) (type 1). No owner of residential properties shall make or permit or suffer to be made any alteration or conversion or modification of the fixed glazing with maintenance window(s) (not for ventilation purpose), acoustic window(s) (baffle type) (type 2) without micro-perforated absorption panel and enhanced acoustic balcony(ies) (baffle type) (type 1) or other installation(s) without the prior written consent of the Building Authority and other relevant Government authorities.

附註:

7. 在期數管理人安排於第2座（第2A座及第2B座）及第3座（第3A座及第3B座）外牆之必要維修期間，吊船將在該等單位之窗戶外及天台/平台/護牆之上及其上空運作。
8. 噪音緩解措施包括適用於期數的個別住宅物業的固定式窗戶連維修窗（不作通風用途）、減音窗（擋音式）（款式2）沒有微孔吸音板及強效減音露台（擋音式）（款式1）。準買家應參閱期數的住宅物業的樓面平面圖以了解固定式窗戶連維修窗（不作通風用途）、減音窗（擋音式）（款式2）沒有微孔吸音板及強效減音露台（擋音式）（款式1）的位置。若沒有建築事務監督及其他政府有關當局的事先書面同意，住宅物業的業主不可作出或允許或忍受他人作出對固定式窗戶連維修窗（不作通風用途）、減音窗（擋音式）（款式2）沒有微孔吸音板及強效減音露台（擋音式）（款式1）或其他裝置的任何改動或變更或修改。

FLOOR PLANS OF RESIDENTIAL PROPERTIES IN THE PHASE

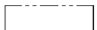
期數的住宅物業的樓面平面圖

Block Name 大廈名稱	Floor 樓層		Flat 單位													
			A1	A2	A3	A5	A6	A7	A8	B1	B2	B3	B5	B6	B7	B8
Tower 2 (Tower 2A & 2B) 第2座 (第2A座及第2B座)	3/F 3樓	Floor-to-floor height of each residential property (mm) 每個住宅物業的層與層之間的高度(毫米)	2740, 2790, 2940, 3040	2740, 2790, 2940, 3040	2640, 2690, 2740, 3040	2740, 2790, 3040	2740, 2790, 2940, 3040	2740, 2790, 3040	2740, 2790, 2940, 3040	2690, 2740, 2790, 2940, 3040	2640, 2690, 2740, 2940, 3040	2740, 2790, 2940, 3040	2740, 2790, 2940, 3040	2690, 2740, 3040	2740, 2790, 3040	2740, 2790, 2940, 3040
		The thickness of the floor slabs (excluding plaster) of each residential property (mm) 每個住宅物業的樓板的厚度(不包括灰泥)(毫米)	150	150	150	150	150	150	150	150	150	150	150	150	150	150

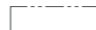
The internal areas of the residential properties on the upper floors will generally be slightly larger than those on the lower floors because of the reducing thickness of the structural walls on the upper floors. (This does not apply to the residential properties in the Phase because the design of the Phase does not involve reducing thickness of structural walls of residential properties on the upper floor and hence internal areas of those residential properties will not be increased.)

因住宅物業的較高的樓層結構牆的厚度遞減，較高樓層的內部面積，一般比較低樓層的內部面積稍大。(不適用於期數的住宅物業，因期數的設計是不牽涉較高樓層的住宅物業的結構牆的厚度遞減。因此，該等住宅物業的內部面積不會增加。)

Notes:

- The dimensions of floor plan are all structural dimensions in millimetre.
- Please refer to Page AL001 - AL002 of this sales brochure for remarks and legend of the terms and abbreviations shown on this floor plan.
- Dotted line in a residential unit with open kitchen delineates the extent of open kitchen area.
 Extent of Open Kitchen Area
- Maintenance windows at fixed glazing with maintenance window (not for ventilation purpose) are openable for maintenances only.

備註:

- 樓面平面圖所列之尺寸數字以毫米標示之建築結構尺寸。
- 請參閱本售樓說明書第AL001-AL002頁之附註及圖例以協助解讀此部份的平面圖及其顯示之名詞及簡稱。
- 設有開放式廚房的住宅單位內所顯示的虛線代表開放式廚房範圍。
 開放式廚房範圍
- 固定式窗戶連維修窗(不作通風用途)中的維修窗戶只能在作維修時開啟。

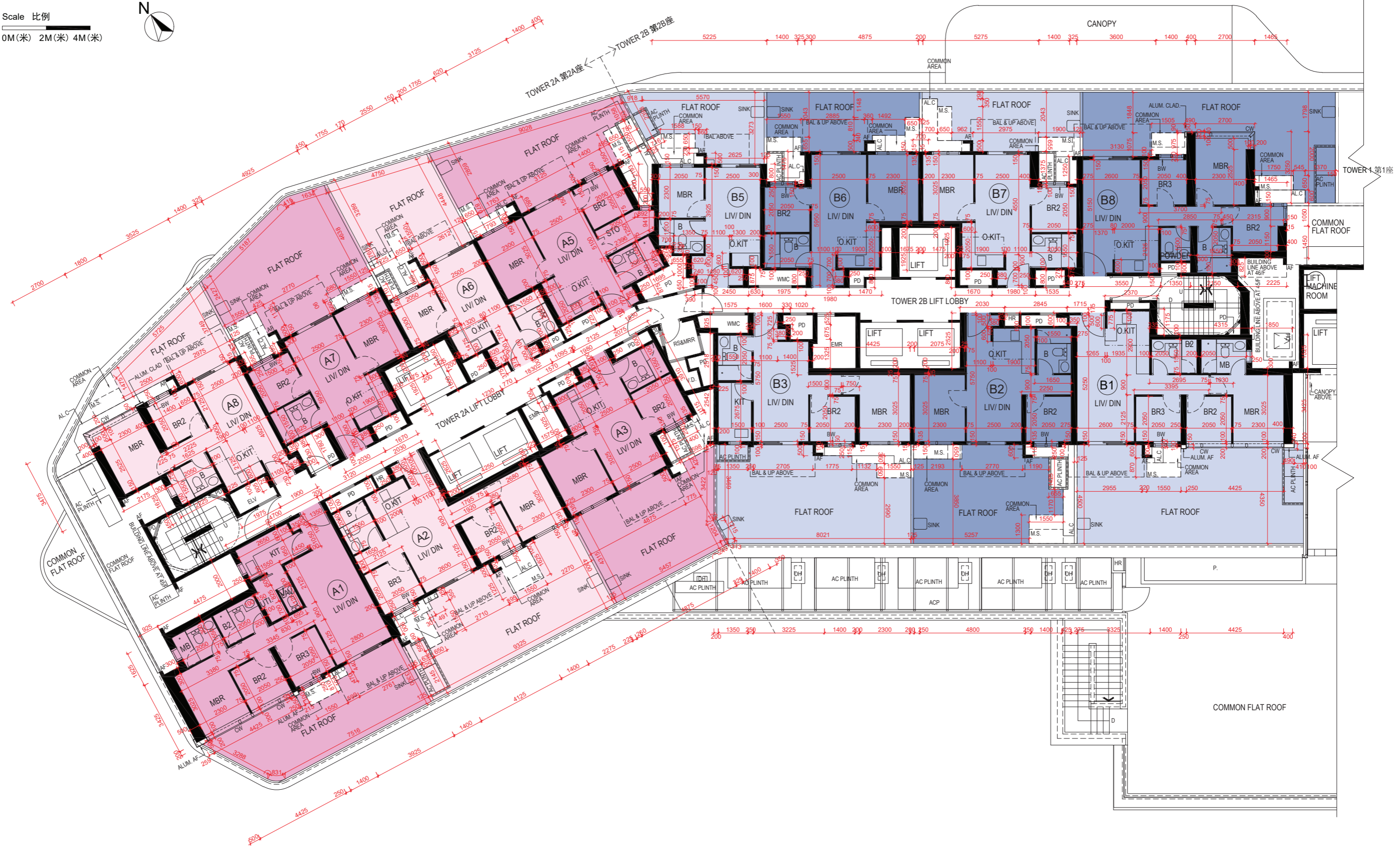
FLOOR PLANS OF RESIDENTIAL PROPERTIES IN THE PHASE

期數的住宅物業的樓面平面圖

Tower 2 (Tower 2A & Tower 2B) 3/F

第2座 (第2A座及第2B座) 3樓

Scale 比例
 0M(米) 2M(米) 4M(米)



FLOOR PLANS OF RESIDENTIAL PROPERTIES IN THE PHASE

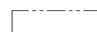
期數的住宅物業的樓面平面圖

Block Name 大廈名稱	Floor 樓層		Flat 單位														
			A1	A2	A3	A5	A6	A7	A8	B1	B2	B3	B5	B6	B7	B8	
Tower 2 (Tower 2A & 2B) 第2座 (第2A座及第2B座)	5/F - 12/F, 15/F - 23/F, 25/F - 33/F & 35/F - 43/F 5樓至12樓、 15樓至23樓、 25樓至33樓及 35樓至43樓	Floor-to-floor height of each residential property (mm) 每個住宅物業的層與層之間的高度(毫米)	2740, 2790, 2940, 3040	2740, 2790, 2940, 3040	2640, 2690, 2740, 3040	2740, 2790, 2940, 3040	2740, 2940, 3040	2740, 2790, 2940, 3040	2740, 2790, 2940, 3040	2690, 2740, 2790, 2940, 3040	2640, 2690, 2740, 2940, 3040	2740, 2790, 2940, 3040	2740, 2790, 2940, 3040	2690, 2740, 2940, 3040	2740, 2790, 2940, 3040	2740, 2790, 2940, 3040	
		The thickness of the floor slabs (excluding plaster) of each residential property (mm) 每個住宅物業的樓板的厚度(不包括灰泥)(毫米)	150	150	150	150	150	150	150	150	150	150	150	150	150	150	150
	45/F 45樓	Floor-to-floor height of each residential property (mm) 每個住宅物業的層與層之間的高度(毫米)	3070, 3095, 3135, 3370	3070, 3270, 3335, 3370	3020, 3070, 3095, 3135, 3270, 3370	3070, 3120, 3120, 3370	3070, 3120, 3270, 3370	3070, 3120, 3120, 3370	3070, 3120, 3270, 3370	3070, 3120, 3270, 3370	3070, 3095, 3135, 3370	3070, 3270, 3335, 3370	3020, 3070, 3095, 3120, 3270, 3370	3070, 3120, 3270, 3370	3020, 3070, 3370	3020, 3070, 3095, 3135, 3370	3070, 3095, 3135, 3270, 3370
		The thickness of the floor slabs (excluding plaster) of each residential property (mm) 每個住宅物業的樓板的厚度(不包括灰泥)(毫米)	150, 300	150, 200	150	150	150	150	150	150	150	150	150	150	150	150	150

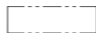
The internal areas of the residential properties on the upper floors will generally be slightly larger than those on the lower floors because of the reducing thickness of the structural walls on the upper floors. (This does not apply to the residential properties in the Phase because the design of the Phase does not involve reducing thickness of structural walls of residential properties on the upper floor and hence internal areas of those residential properties will not be increased.)

因住宅物業的較高的樓層結構牆的厚度遞減，較高樓層的內部面積，一般比較低樓層的內部面積稍大。(不適用於期數的住宅物業，因期數的設計是不牽涉較高樓層的住宅物業的結構牆的厚度遞減。因此，該等住宅物業的內部面積不會增加。)

Notes:

- The dimensions of floor plan are all structural dimensions in millimetre.
- Please refer to Page AL001 - AL002 of this sales brochure for remarks and legend of the terms and abbreviations shown on this floor plan.
- Dotted line in a residential unit with open kitchen delineates the extent of open kitchen area.
 Extent of Open Kitchen Area
- Maintenance windows at fixed glazing with maintenance window (not for ventilation purpose) are openable for maintenances only.

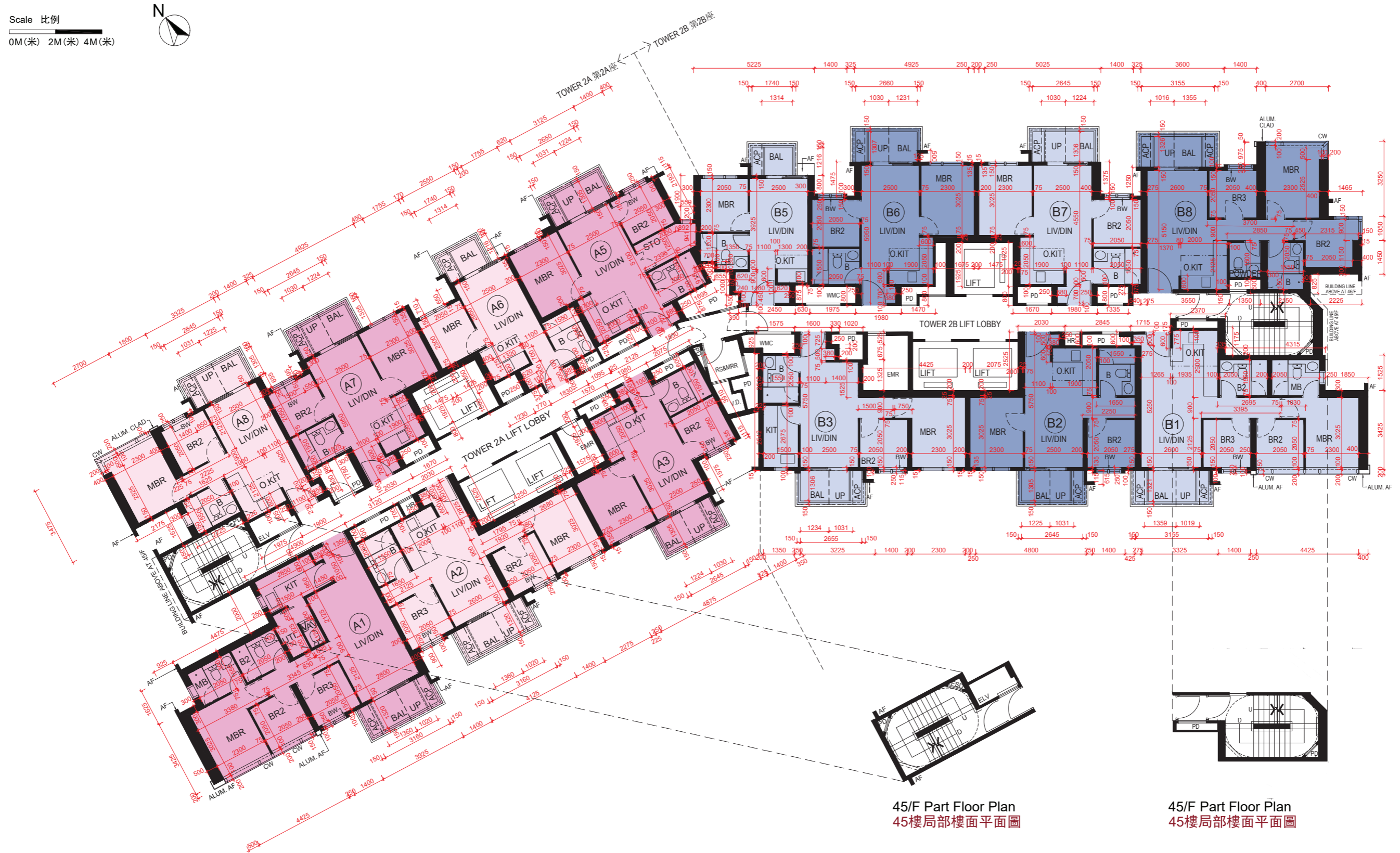
備註:

- 樓面平面圖所列之尺寸數字以毫米標示之建築結構尺寸。
- 請參閱本售樓說明書第AL001-AL002頁之附註及圖例以協助解讀此部份的平面圖及其顯示之名詞及簡稱。
- 設有開放式廚房的住宅單位內所顯示的虛線代表開放式廚房範圍。
 開放式廚房範圍
- 固定式窗戶連維修窗(不作通風用途)中的維修窗戶只能在作維修時開啟。

FLOOR PLANS OF RESIDENTIAL PROPERTIES IN THE PHASE

期數的住宅物業的樓面平面圖

Tower 2 (Tower 2A & Tower 2B) 5/F-12/F, 15/F-23/F, 25/F-33/F, 35/F-43/F & 45/F
 第2座 (第2A座及第2B座) 5樓至12樓、15樓至23樓、25樓至33樓、35樓至43樓及45樓



FLOOR PLANS OF RESIDENTIAL PROPERTIES IN THE PHASE


期數的住宅物業的樓面平面圖

Block Name 大廈名稱	Floor 樓層	Flat 單位									
		Floor-to-floor height of each residential property (mm) 每個住宅物業的層與層之間的高度(毫米)	Simplex 1A	A5	A6	A7	A8	Simplex 1B	Simplex 2B	B5	B6
Tower 2 (Tower 2A & 2B) 第2座 (第2A座及第2B座)	46/F 46樓	Floor-to-floor height of each residential property (mm) 每個住宅物業的層與層之間的高度(毫米)	3090	3090	3090	3090	3090, 3490	3090, 3490	3090, 3490	3090	3090
		The thickness of the floor slabs (excluding plaster) of each residential property (mm) 每個住宅物業的樓板的厚度(不包括灰泥)(毫米)	200	200	200	200	200	200	200	200	200

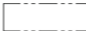
The internal areas of the residential properties on the upper floors will generally be slightly larger than those on the lower floors because of the reducing thickness of the structural walls on the upper floors. (This does not apply to the residential properties in the Phase because the design of the Phase does not involve reducing thickness of structural walls of residential properties on the upper floor and hence internal areas of those residential properties will not be increased.)

因住宅物業的較高的樓層結構牆的厚度遞減，較高樓層的內部面積，一般比較低樓層的內部面積稍大。(不適用於期數的住宅物業，因期數的設計是不牽涉較高樓層的住宅物業的結構牆的厚度遞減。因此，該等住宅物業的內部面積不會增加。)

Notes:

- The dimensions of floor plan are all structural dimensions in millimetre.
- Please refer to Page AL001 - AL002 of this sales brochure for remarks and legend of the terms and abbreviations shown on this floor plan.
- Dotted line in a residential unit with open kitchen delineates the extent of open kitchen area.
 Extent of Open Kitchen Area
- Maintenance windows at fixed glazing with maintenance window (not for ventilation purpose) are openable for maintenances only.

備註:

- 樓面平面圖所列之尺寸數字以毫米標示之建築結構尺寸。
- 請參閱本售樓說明書第AL001-AL002頁之附註及圖例以協助解讀此部份的平面圖及其顯示之名詞及簡稱。
- 設有開放式廚房的住宅單位內所顯示的虛線代表開放式廚房範圍。
 開放式廚房範圍
- 固定式窗戶連維修窗(不作通風用途)中的維修窗戶只能在作維修時開啟。

FLOOR PLANS OF RESIDENTIAL PROPERTIES IN THE PHASE

期數的住宅物業的樓面平面圖

Tower 2 (Tower 2A & Tower 2B) 46/F

第2座 (第2A座及第2B座) 46樓

Scale 比例
 0M(米) 2M(米) 4M(米)



FLOOR PLANS OF RESIDENTIAL PROPERTIES IN THE PHASE

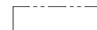
期數的住宅物業的樓面平面圖

Block Name 大廈名稱	Floor 樓層		Flat 單位												
			A1	A2	A3	A5	A6	A7	A8	A9	A10	A11	A12	A13	A15
Tower 3A 第3A座	3/F 3樓	Floor-to-floor height of each residential property (mm) 每個住宅物業的層與層之間的高度(毫米)	2740, 2790, 2940, 3040	2740, 2790, 3040	2740, 2790, 2940, 3040	2740, 2790, 3040	2740, 2790, 3040	2740, 2790, 3040	2740, 2790, 2940, 3040	2740, 2790, 2940, 3040	2740, 2790, 2940, 3040	2640, 2690, 2740, 2940, 3040	2640, 2740, 2790, 3040	2640, 2740, 2790, 3040	2640, 2740, 2790, 3040
		The thickness of the floor slabs (excluding plaster) of each residential property (mm) 每個住宅物業的樓板的厚度(不包括灰泥)(毫米)	150	150	150	150	150	150	150	150	150	150	150	150	150


The internal areas of the residential properties on the upper floors will generally be slightly larger than those on the lower floors because of the reducing thickness of the structural walls on the upper floors. (This does not apply to the residential properties in the Phase because the design of the Phase does not involve reducing thickness of structural walls of residential properties on the upper floor and hence internal areas of those residential properties will not be increased.)

因住宅物業的較高的樓層結構牆的厚度遞減，較高樓層的內部面積，一般比較低樓層的內部面積稍大。(不適用於期數的住宅物業，因期數的設計是不牽涉較高樓層的住宅物業的結構牆的厚度遞減。因此，該等住宅物業的內部面積不會增加。)

Notes:

- The dimensions of floor plan are all structural dimensions in millimetre.
- Please refer to Page AL001 - AL002 of this sales brochure for remarks and legend of the terms and abbreviations shown on this floor plan.
- Dotted line in a residential unit with open kitchen delineates the extent of open kitchen area.
 Extent of Open Kitchen Area
- Maintenance windows at fixed glazing with maintenance window (not for ventilation purpose) are openable for maintenances only.

備註:

- 樓面平面圖所列之尺寸數字以毫米標示之建築結構尺寸。
- 請參閱本售樓說明書第AL001-AL002頁之附註及圖例以協助解讀此部份的平面圖及其顯示之名詞及簡稱。
- 設有開放式廚房的住宅單位內所顯示的虛線代表開放式廚房範圍。
 開放式廚房範圍
- 固定式窗戶連維修窗(不作通風用途)中的維修窗戶只能在作維修時開啟。

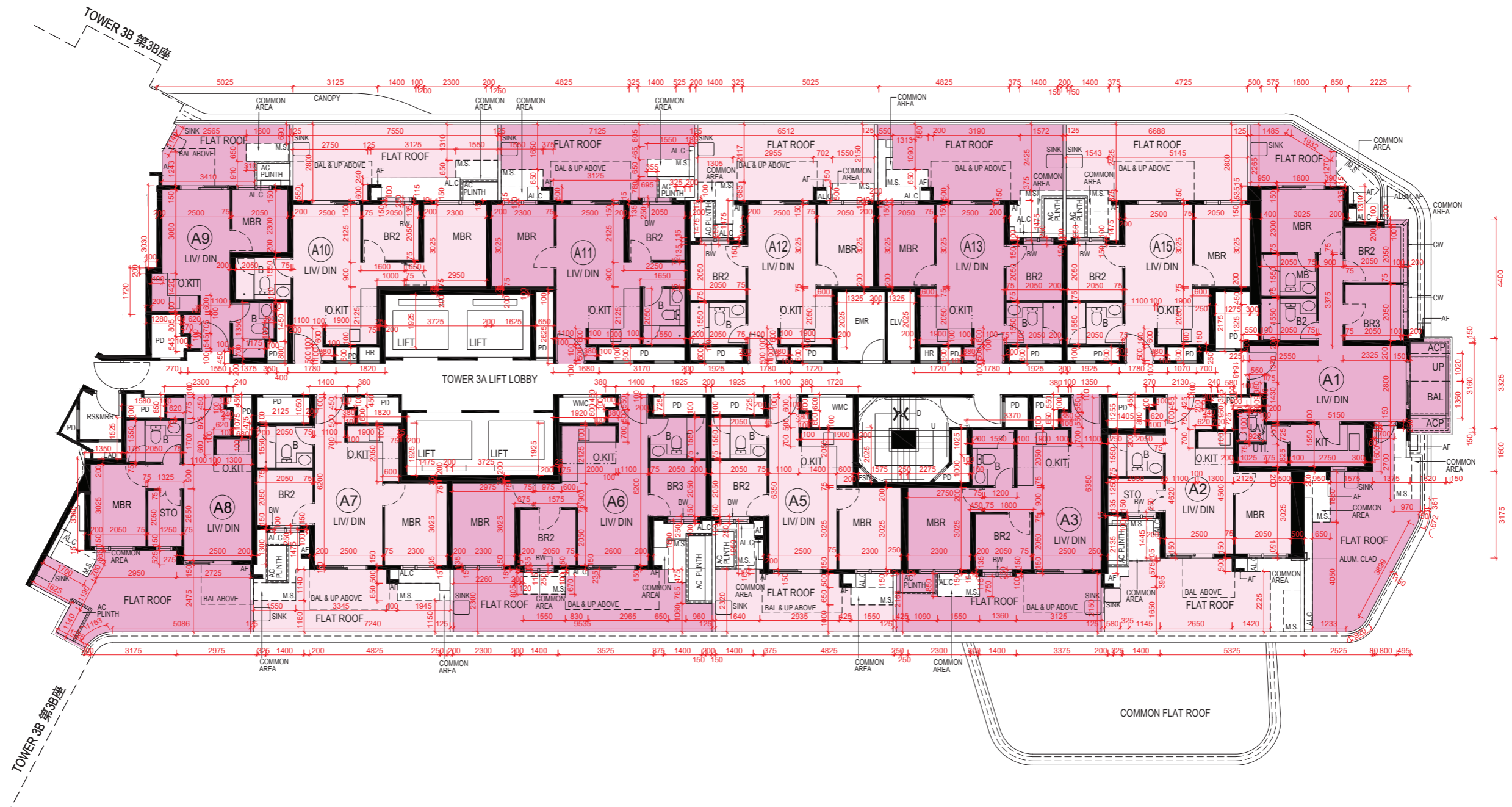
FLOOR PLANS OF RESIDENTIAL PROPERTIES IN THE PHASE

期數的住宅物業的樓面平面圖

Tower 3A 3/F

第3A座 3樓

Scale 比例
0M(米) 2M(米) 4M(米)



FLOOR PLANS OF RESIDENTIAL PROPERTIES IN THE PHASE

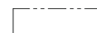
期數的住宅物業的樓面平面圖

Block Name 大廈名稱	Floor 樓層		Flat 單位													
			A1	A2	A3	A5	A6	A7	A8	A9	A10	A11	A12	A13	A15	
Tower 3A 第3A座	5/F - 12/F, 15/F - 23/F, 25/F - 33/F & 35/F - 43/F 5樓至12樓、 15樓至23樓、 25樓至33樓及 35樓至43樓	Floor-to-floor height of each residential property (mm) 每個住宅物業的層與層之間的高度(毫米)	2740, 2790, 2940, 3040	2740, 2790, 3040	2740, 2790, 2940, 3040	2740, 2790, 3040	2740, 2790, 3040	2740, 2790, 3040	2740, 2790, 2940, 3040	2740, 2790, 2940, 3040	2740, 2790, 2940, 3040	2640, 2690, 2740, 2940, 3040	2640, 2740, 2790, 3040	2640, 2740, 2790, 3040	2640, 2740, 2790, 3040	
		The thickness of the floor slabs (excluding plaster) of each residential property (mm) 每個住宅物業的樓板的厚度(不包括灰泥)(毫米)	150	150	150	150	150	150	150	150	150	150	150	150	150	150
	45/F 45樓	Floor-to-floor height of each residential property (mm) 每個住宅物業的層與層之間的高度(毫米)	3020, 3070, 3095, 3135, 3370	3070, 3095, 3270, 3135, 3370	3070, 3120, 3270, 3370	3070, 3120, 3370	3070, 3120, 3370	3070, 3120, 3370	3070, 3120, 3270, 3370	3070, 3120, 3270, 3370	3070, 3120, 3270, 3370	3070, 3120, 3270, 3370	3070, 3095, 3135, 3370	3020, 3070, 3095, 3135, 3270, 3370	3070, 3095, 3135, 3370	3070, 3095, 3135, 3270, 3370
		The thickness of the floor slabs (excluding plaster) of each residential property (mm) 每個住宅物業的樓板的厚度(不包括灰泥)(毫米)	150	150	150	150	150	150	150	150	150	150	150	150	150	150

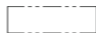
The internal areas of the residential properties on the upper floors will generally be slightly larger than those on the lower floors because of the reducing thickness of the structural walls on the upper floors. (This does not apply to the residential properties in the Phase because the design of the Phase does not involve reducing thickness of structural walls of residential properties on the upper floor and hence internal areas of those residential properties will not be increased.)

因住宅物業的較高的樓層結構牆的厚度遞減，較高樓層的內部面積，一般比較低樓層的內部面積稍大。(不適用於期數的住宅物業，因期數的設計是不牽涉較高樓層的住宅物業的結構牆的厚度遞減。因此，該等住宅物業的內部面積不會增加。)

Notes:

- The dimensions of floor plan are all structural dimensions in millimetre.
- Please refer to Page AL001 - AL002 of this sales brochure for remarks and legend of the terms and abbreviations shown on this floor plan.
- Dotted line in a residential unit with open kitchen delineates the extent of open kitchen area.
 Extent of Open Kitchen Area
- Maintenance windows at fixed glazing with maintenance window (not for ventilation purpose) are openable for maintenances only.

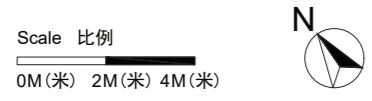
備註:

- 樓面平面圖所列之尺寸數字以毫米標示之建築結構尺寸。
- 請參閱本售樓說明書第AL001-AL002頁之附註及圖例以協助解讀此部份的平面圖及其顯示之名詞及簡稱。
- 設有開放式廚房的住宅單位內所顯示的虛線代表開放式廚房範圍。
 開放式廚房範圍
- 固定式窗戶連維修窗(不作通風用途)中的維修窗戶只能在作維修時開啟。

FLOOR PLANS OF RESIDENTIAL PROPERTIES IN THE PHASE

期數的住宅物業的樓面平面圖

Tower 3A 5/F-12/F, 15/F-23/F, 25/F-33/F, 35/F-43/F & 45/F
 第3A座 5樓至12樓、15樓至23樓、25樓至33樓、35樓至43樓及45樓



45/F Part Floor Plan
 45樓局部樓面平面圖

FLOOR PLANS OF RESIDENTIAL PROPERTIES IN THE PHASE

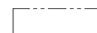
期數的住宅物業的樓面平面圖

Block Name 大廈名稱	Floor 樓層		Flat 單位								
			Simplex 1A	Simplex 2A	A3	A5	A6	A7	A8	A9	A10
Tower 3A 第3A座	46/F 46樓	Floor-to-floor height of each residential property (mm) 每個住宅物業的層與層之間的高度(毫米)	3090	3090	3090, 3490	3090	3090	3090	3090	3090	3090
		The thickness of the floor slabs (excluding plaster) of each residential property (mm) 每個住宅物業的樓板的厚度(不包括灰泥)(毫米)	200	200	200	200	200	200	200	200	200


The internal areas of the residential properties on the upper floors will generally be slightly larger than those on the lower floors because of the reducing thickness of the structural walls on the upper floors. (This does not apply to the residential properties in the Phase because the design of the Phase does not involve reducing thickness of structural walls of residential properties on the upper floor and hence internal areas of those residential properties will not be increased.)

因住宅物業的較高的樓層結構牆的厚度遞減，較高樓層的內部面積，一般比較低樓層的內部面積稍大。(不適用於期數的住宅物業，因期數的設計是不牽涉較高樓層的住宅物業的結構牆的厚度遞減。因此，該等住宅物業的內部面積不會增加。)

Notes:

- The dimensions of floor plan are all structural dimensions in millimetre.
- Please refer to Page AL001 - AL002 of this sales brochure for remarks and legend of the terms and abbreviations shown on this floor plan.
- Dotted line in a residential unit with open kitchen delineates the extent of open kitchen area.
 Extent of Open Kitchen Area
- Maintenance windows at fixed glazing with maintenance window (not for ventilation purpose) are openable for maintenances only.

備註:

- 樓面平面圖所列之尺寸數字以毫米標示之建築結構尺寸。
- 請參閱本售樓說明書第AL001-AL002頁之附註及圖例以協助解讀此部份的平面圖及其顯示之名詞及簡稱。
- 設有開放式廚房的住宅單位內所顯示的虛線代表開放式廚房範圍。
 開放式廚房範圍
- 固定式窗戶連維修窗(不作通風用途)中的維修窗戶只能在作維修時開啟。

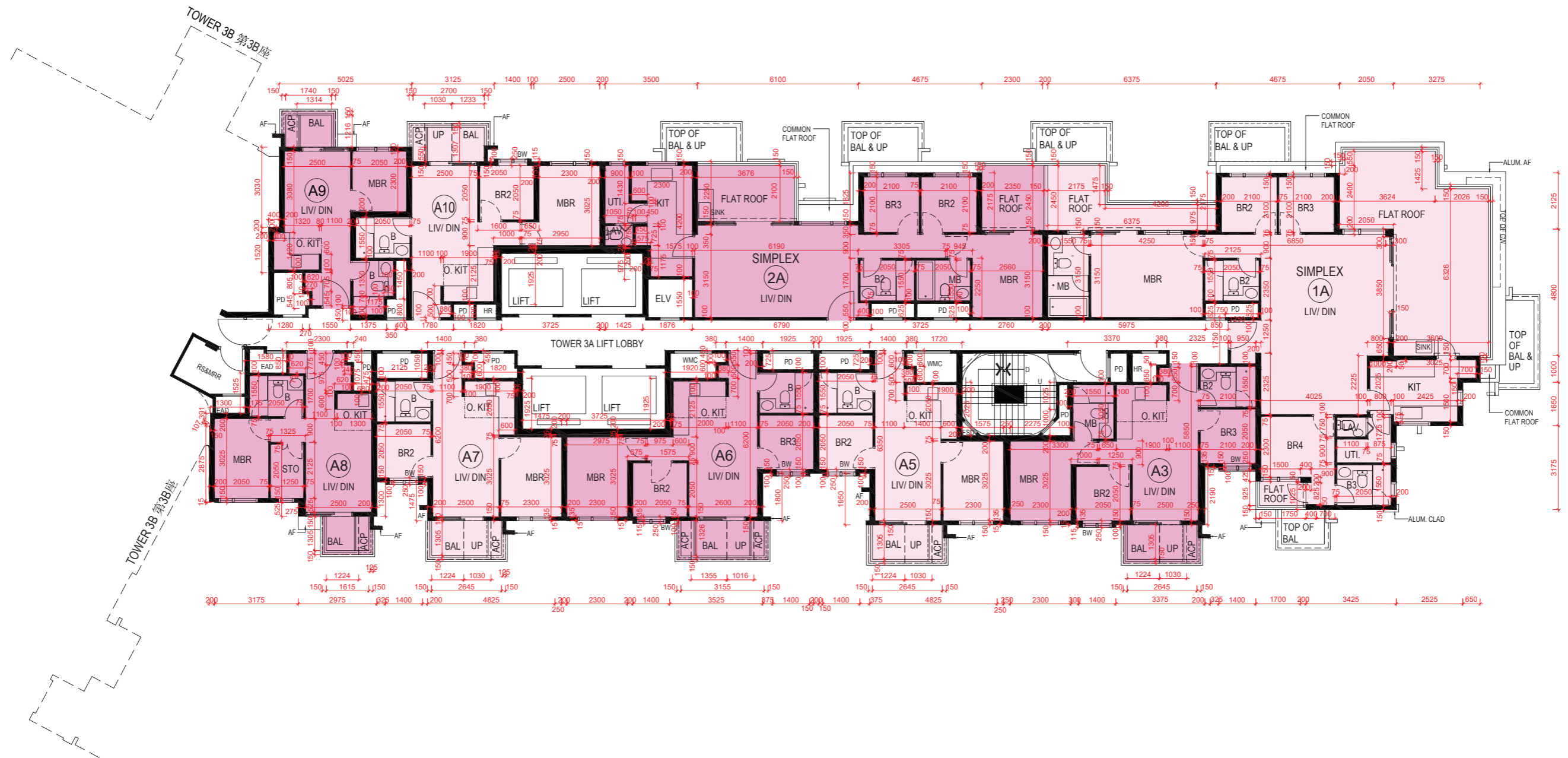
FLOOR PLANS OF RESIDENTIAL PROPERTIES IN THE PHASE

期數的住宅物業的樓面平面圖

Tower 3A 46/F

第3A座 46樓

Scale 比例
 0M(米) 2M(米) 4M(米)



FLOOR PLANS OF RESIDENTIAL PROPERTIES IN THE PHASE


期數的住宅物業的樓面平面圖

Block Name 大廈名稱	Floor 樓層		Flat 單位									
			B1	B2	B3	B5	B6	B7	B8	B9	B10	B11
Tower 3B 第3B座	3/F 3樓	Floor-to-floor height of each residential property (mm) 每個住宅物業的層與層之間的高度(毫米)	2740, 2940, 3040	2640, 2740, 2790, 3040	2640, 2690, 2740, 2940, 3040	2740, 2790, 2940, 3040	2740, 2940, 3040	2740, 2790, 2940, 3040	2740, 2790, 2940, 3040	2640, 2740, 2790, 3040	2740, 2940, 3040	2740, 2790, 2940, 3040
		The thickness of the floor slabs (excluding plaster) of each residential property (mm) 每個住宅物業的樓板的厚度(不包括灰泥)(毫米)	150	150	150	150	150	150	150	150	150	150


The internal areas of the residential properties on the upper floors will generally be slightly larger than those on the lower floors because of the reducing thickness of the structural walls on the upper floors. (This does not apply to the residential properties in the Phase because the design of the Phase does not involve reducing thickness of structural walls of residential properties on the upper floor and hence internal areas of those residential properties will not be increased.)

因住宅物業的較高的樓層結構牆的厚度遞減，較高樓層的內部面積，一般比較低樓層的內部面積稍大。(不適用於期數的住宅物業，因期數的設計是不牽涉較高樓層的住宅物業的結構牆的厚度遞減。因此，該等住宅物業的內部面積不會增加。)

Notes:

- The dimensions of floor plan are all structural dimensions in millimetre.
- Please refer to Page AL001 - AL002 of this sales brochure for remarks and legend of the terms and abbreviations shown on this floor plan.
- Dotted line in a residential unit with open kitchen delineates the extent of open kitchen area.
 Extent of Open Kitchen Area
- Maintenance windows at fixed glazing with maintenance window (not for ventilation purpose) are openable for maintenances only.

備註:

- 樓面平面圖所列之尺寸數字以毫米標示之建築結構尺寸。
- 請參閱本售樓說明書第AL001-AL002頁之附註及圖例以協助解讀此部份的平面圖及其顯示之名詞及簡稱。
- 設有開放式廚房的住宅單位內所顯示的虛線代表開放式廚房範圍。
 開放式廚房範圍
- 固定式窗戶連維修窗(不作通風用途)中的維修窗戶只能在作維修時開啟。

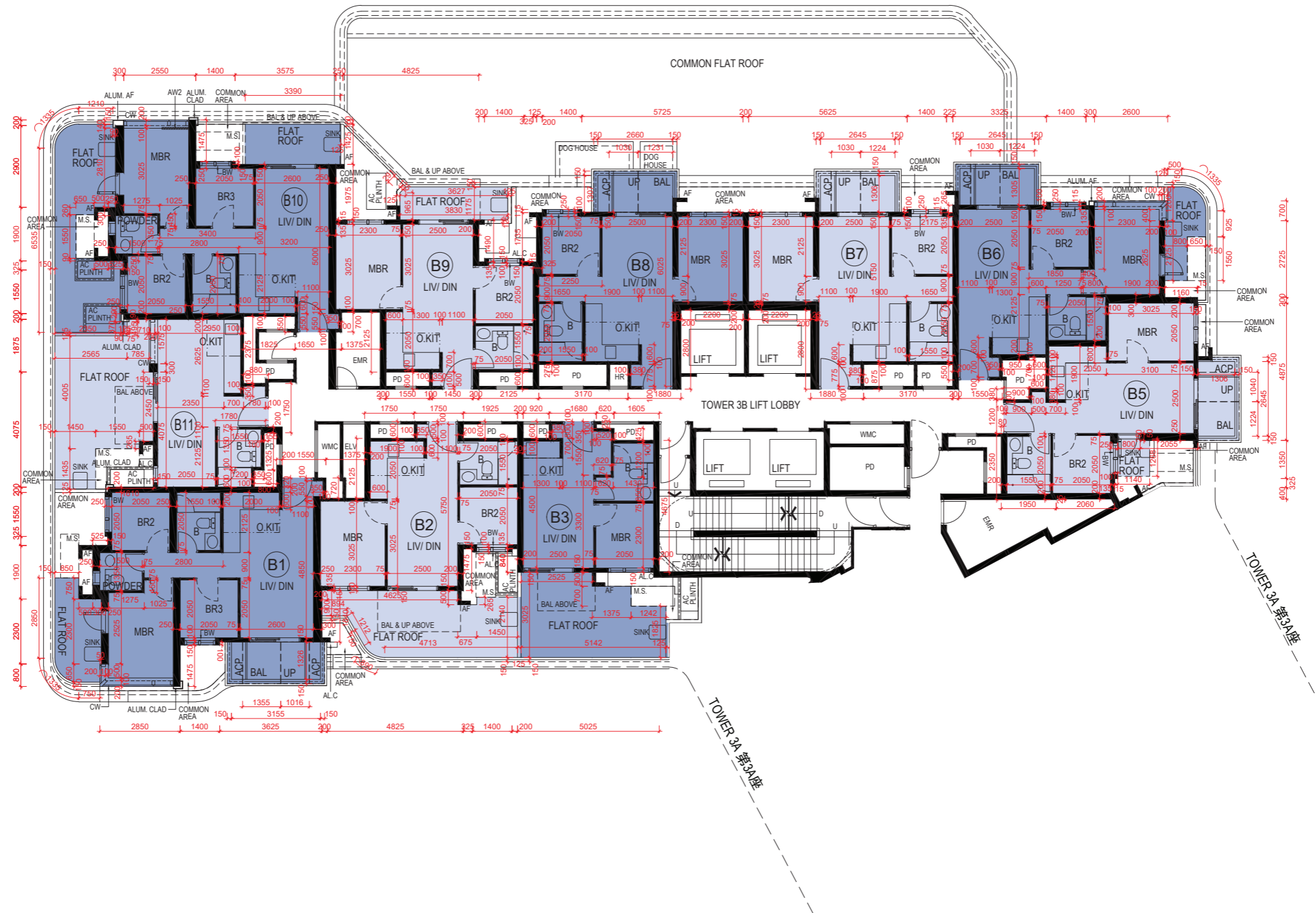
FLOOR PLANS OF RESIDENTIAL PROPERTIES IN THE PHASE

期數的住宅物業的樓面平面圖

Tower 3B 3/F

第3B座 3樓

Scale 比例
0M(米) 2M(米) 4M(米)



FLOOR PLANS OF RESIDENTIAL PROPERTIES IN THE PHASE


期數的住宅物業的樓面平面圖

Block Name 大廈名稱	Floor 樓層		Flat 單位									
			B1	B2	B3	B5	B6	B7	B8	B9	B10	B11
Tower 3B 第3B座	5/F - 12/F, 15/F - 23/F, 25/F - 33/F & 35/F - 43/F 5樓至12樓、 15樓至23樓、 25樓至33樓及 35樓至43樓	Floor-to-floor height of each residential property (mm) 每個住宅物業的層與層之間的高度(毫米)	2740, 2940, 3040	2640, 2740, 2790, 3040	2640, 2690, 2740, 2940, 3040	2740, 2790, 2940, 3040	2740, 2940, 3040	2740, 2790, 2940, 3040	2740, 2790, 2940, 3040	2640, 2740, 2790, 3040	2740, 2940, 3040	2740, 2790, 2940, 3040
		The thickness of the floor slabs (excluding plaster) of each residential property (mm) 每個住宅物業的樓板的厚度(不包括灰泥)(毫米)	150	150	150	150	150	150	150	150	150	150
	45/F 45樓	Floor-to-floor height of each residential property (mm) 每個住宅物業的層與層之間的高度(毫米)	3070, 3270, 3370	2970, 3070, 3120, 3370	2970, 3020, 3070, 3270, 3370	3070, 3095, 3270, 3370	3095, 3270, 3335, 3370	3070, 3270, 3335, 3370	3070, 3120, 3270, 3370	2970, 3070, 3095, 3135, 3270, 3370	2845, 2970, 3020, 3070, 3095, 3135, 3270, 3370	3070, 3370
		The thickness of the floor slabs (excluding plaster) of each residential property (mm) 每個住宅物業的樓板的厚度(不包括灰泥)(毫米)	150	150	150	150	150, 200	150, 200	150	150	150	150

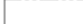
The internal areas of the residential properties on the upper floors will generally be slightly larger than those on the lower floors because of the reducing thickness of the structural walls on the upper floors. (This does not apply to the residential properties in the Phase because the design of the Phase does not involve reducing thickness of structural walls of residential properties on the upper floor and hence internal areas of those residential properties will not be increased.)

因住宅物業的較高的樓層結構牆的厚度遞減，較高樓層的內部面積，一般比較低樓層的內部面積稍大。(不適用於期數的住宅物業，因期數的設計是不牽涉較高樓層的住宅物業的結構牆的厚度遞減。因此，該等住宅物業的內部面積不會增加。)

Notes:

- The dimensions of floor plan are all structural dimensions in millimetre.
- Please refer to Page AL001 - AL002 of this sales brochure for remarks and legend of the terms and abbreviations shown on this floor plan.
- Dotted line in a residential unit with open kitchen delineates the extent of open kitchen area.
 Extent of Open Kitchen Area
- Maintenance windows at fixed glazing with maintenance window (not for ventilation purpose) are openable for maintenances only.

備註:

- 樓面平面圖所列之尺寸數字以毫米標示之建築結構尺寸。
- 請參閱本售樓說明書第AL001-AL002頁之附註及圖例以協助解讀此部份的平面圖及其顯示之名詞及簡稱。
- 設有開放式廚房的住宅單位內所顯示的虛線代表開放式廚房範圍。
 開放式廚房範圍
- 固定式窗戶連維修窗(不作通風用途)中的維修窗戶只能在作維修時開啟。

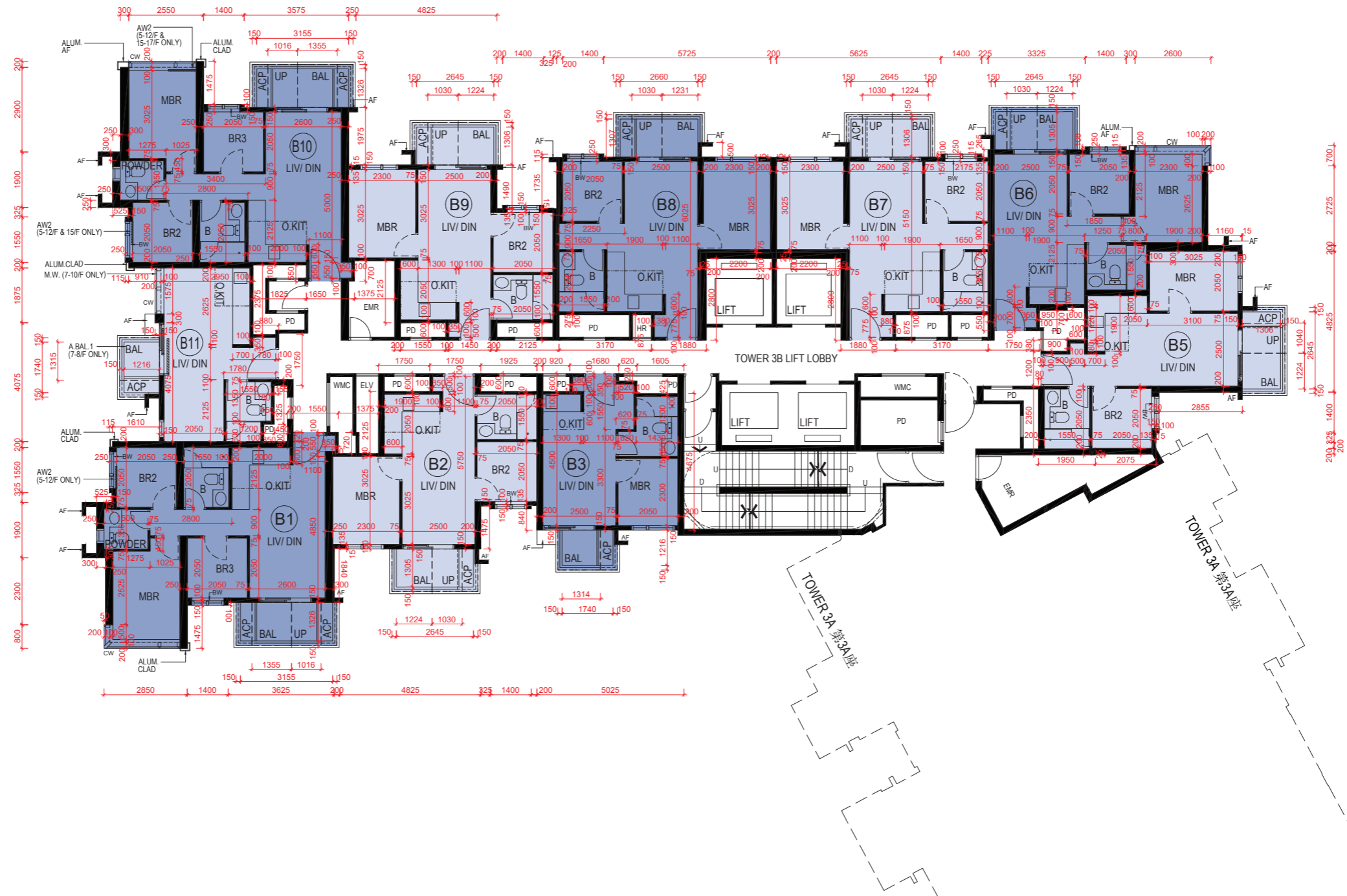
FLOOR PLANS OF RESIDENTIAL PROPERTIES IN THE PHASE

期數的住宅物業的樓面平面圖

Tower 3B 5/F-12/F, 15/F-23/F, 25/F-33/F, 35/F-43/F & 45/F

第3B座 5樓至12樓、15樓至23樓、25樓至33樓、35樓至43樓及45樓

Scale 比例
 0M(米) 2M(米) 4M(米)



FLOOR PLANS OF RESIDENTIAL PROPERTIES IN THE PHASE


期數的住宅物業的樓面平面圖

Block Name 大廈名稱	Floor 樓層	Flat 單位						
		Simplex 1B	Simplex 2B	B1	B2	B3	B8	
Tower 3B 第3B座	46/F 46樓	Floor-to-floor height of each residential property (mm) 每個住宅物業的層與層之間的高度(毫米)	3090, 3340, 3490	3090	3090	3090	3090, 3490	3090
		The thickness of the floor slabs (excluding plaster) of each residential property (mm) 每個住宅物業的樓板的厚度(不包括灰泥)(毫米)	200	200	200	200	200	200


The internal areas of the residential properties on the upper floors will generally be slightly larger than those on the lower floors because of the reducing thickness of the structural walls on the upper floors. (This does not apply to the residential properties in the Phase because the design of the Phase does not involve reducing thickness of structural walls of residential properties on the upper floor and hence internal areas of those residential properties will not be increased.)

因住宅物業的較高的樓層結構牆的厚度遞減，較高樓層的內部面積，一般比較低樓層的內部面積稍大。(不適用於期數的住宅物業，因期數的設計是不牽涉較高樓層的住宅物業的結構牆的厚度遞減。因此，該等住宅物業的內部面積不會增加。)

Notes:

- The dimensions of floor plan are all structural dimensions in millimetre.
- Please refer to Page AL001 - AL002 of this sales brochure for remarks and legend of the terms and abbreviations shown on this floor plan.
- Dotted line in a residential unit with open kitchen delineates the extent of open kitchen area.
 Extent of Open Kitchen Area
- Maintenance windows at fixed glazing with maintenance window (not for ventilation purpose) are openable for maintenances only.

備註:

- 樓面平面圖所列之尺寸數字以毫米標示之建築結構尺寸。
- 請參閱本售樓說明書第AL001-AL002頁之附註及圖例以協助解讀此部份的平面圖及其顯示之名詞及簡稱。
- 設有開放式廚房的住宅單位內所顯示的虛線代表開放式廚房範圍。
 開放式廚房範圍
- 固定式窗戶連維修窗(不作通風用途)中的維修窗戶只能在作維修時開啟。

FLOOR PLANS OF RESIDENTIAL PROPERTIES IN THE PHASE

期數的住宅物業的樓面平面圖

Tower 3B 46/F

第3B座 46樓

Scale 比例
 0M(米) 2M(米) 4M(米)

