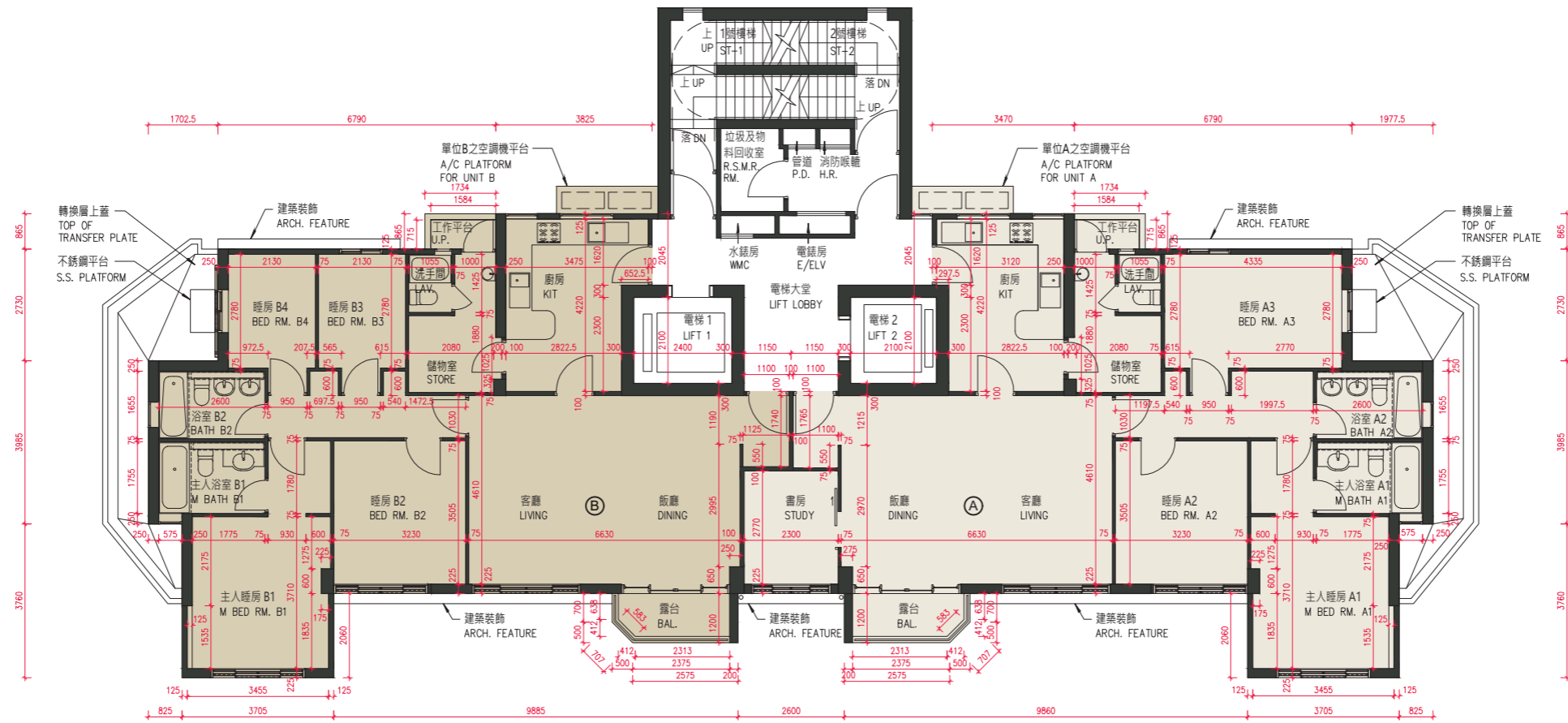


10 FLOOR PLANS OF RESIDENTIAL PROPERTIES IN THE DEVELOPMENT

發展項目的住宅物業的樓面平面圖

Jessville Tower Jessville大廈

1/F Floor Plan 1樓樓面平面圖



比例
Scale: 0m/米 5m/米

Jessville Tower Jessville大廈

The thickness of the floor slabs (excluding plaster) of each residential property (mm)
每個住宅物業的樓板(不包括灰泥)的厚度(毫米)

The floor-to-floor height (refers to the height between the top surface of the structural slab of a floor and the top surface of the structural slab of its immediate upper floor) of each residential property (mm)
每個住宅物業的層與層之間的高度(指該樓層之石屎地台面與上一層石屎地台面之高度距離)(毫米)

Floor 樓層	Units 單位	
	A	B
1/F 1樓	150	150
1/F 1樓	3150	3150
1/F 1樓	3150#	3150#

Inclusive of the sunken depth of the drainage zone on the floor of this floor (300mm)
包括本層地台跌級排水管層之跌級深度(300毫米)

Notes:

- The internal areas of the residential properties on the upper floors will generally be slightly larger than those on the lower floors because of the reducing thickness of the structural walls on the upper floors.
- Please refer to P.26 of this sales brochure for the legends and notes for the floor plan of residential properties.
- The dimension in floor plans are all structural dimensions in millimetre.

備註:

- 因住宅物業的較高樓層的結構牆的厚度遞減，較高樓層的內部面積，一般比較低樓層的內部面積稍大。
- 請參閱本售樓說明書第26頁為住宅物業的樓面平面圖而設之圖例及備註。
- 樓面平面圖所列的數字為以毫米標示之建築結構尺寸。

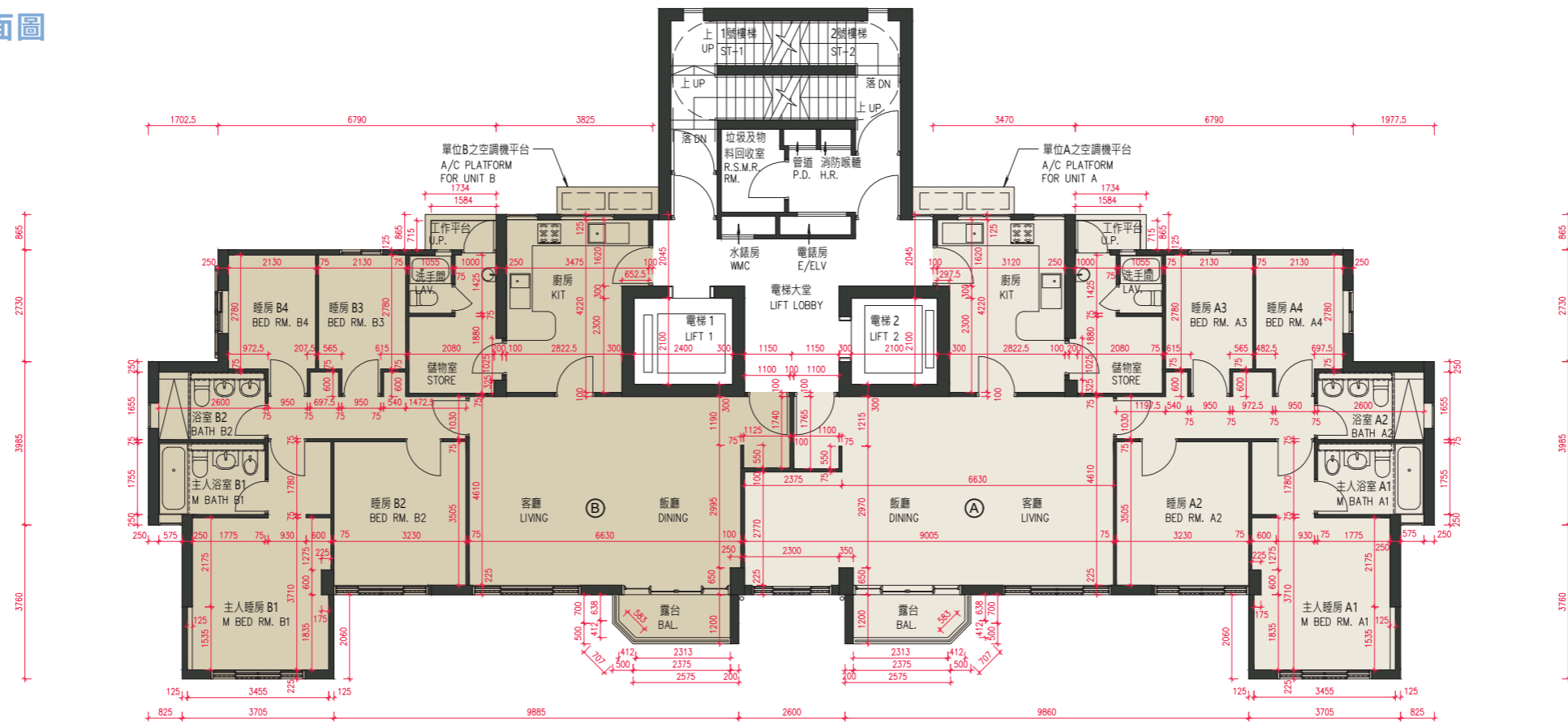
10 FLOOR PLANS OF RESIDENTIAL PROPERTIES IN THE DEVELOPMENT

發展項目的住宅物業的樓面平面圖

Jessville Tower Jessville 大廈

2/F & 14/F Floor Plan

2樓及 14樓樓面平面圖



比例
Scale: 0m/米 5m/米

Jessville Tower Jessville 大廈

The thickness of the floor slabs (excluding plaster) of each residential property (mm)
每個住宅物業的樓板(不包括灰泥)的厚度(毫米)

The floor-to-floor height (refers to the height between the top surface of the structural slab of a floor and the top surface of the structural slab of its immediate upper floor) of each residential property (mm)
每個住宅物業的層與層之間的高度(指該樓層之石屎地台面與上一層石屎地台面之高度距離)(毫米)

Floor 樓層	Units 單位	
	A	B
2/F 2樓	150	150
14/F 14樓	150	150
2/F 2樓	3150	3150
14/F 14樓	3150 [#]	3150 [#]
14/F 14樓	3150	3150
14/F 14樓	3450 [#]	3450 [#]

[#]Inclusive of the sunken depth of the drainage zone on the floor of this floor (300mm)
[#]包括本層地台跌級排水管層之跌級深度(300毫米)

Notes:

- The internal areas of the residential properties on the upper floors will generally be slightly larger than those on the lower floors because of the reducing thickness of the structural walls on the upper floors.
- Please refer to P.26 of this sales brochure for the legends and notes for the floor plan of residential properties.
- The dimension in floor plans are all structural dimensions in millimetre.

備註:

- 因住宅物業的較高樓層的結構牆的厚度遞減,較高樓層的內部面積,一般比較低樓層的內部面積稍大。
- 請參閱本售樓說明書第26頁為住宅物業的樓面平面圖而設之圖例及備註。
- 樓面平面圖所列的數字為以毫米標示之建築結構尺寸。

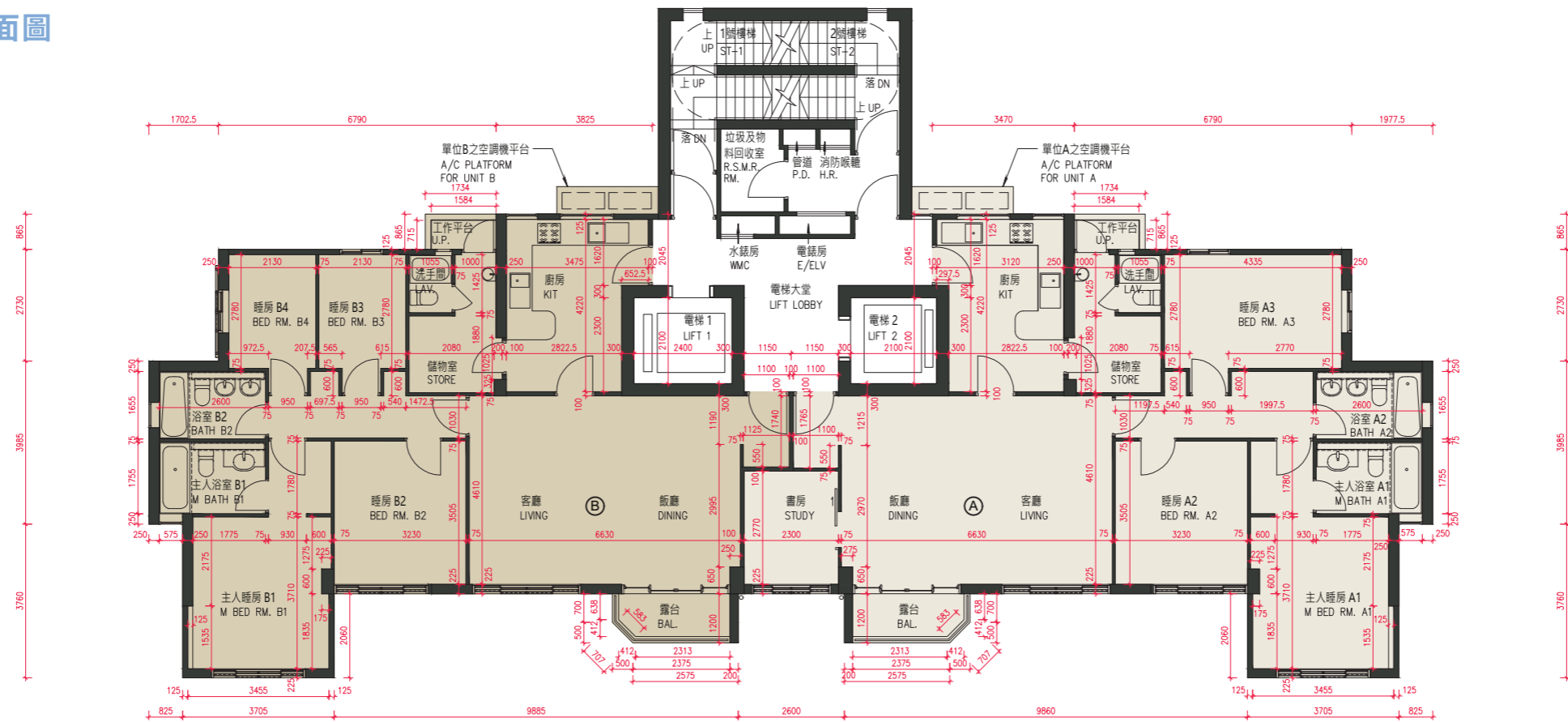
10 FLOOR PLANS OF RESIDENTIAL PROPERTIES IN THE DEVELOPMENT

發展項目的住宅物業的樓面平面圖

Jessville Tower Jessville 大廈

3/F to 13/F Floor Plan

3樓至13樓樓面平面圖



比例
Scale: 0m/米 5m/米

Jessville Tower Jessville 大廈

	Floor 樓層	Units 單位	
		A	B
The thickness of the floor slabs (excluding plaster) of each residential property (mm) 每個住宅物業的樓板(不包括灰泥)的厚度(毫米)	3/F to 13/F 3樓至13樓	150	150
The floor-to-floor height (refers to the height between the top surface of the structural slab of a floor and the top surface of the structural slab of its immediate upper floor) of each residential property (mm) 每個住宅物業的層與層之間的高度(指該樓層之石屎地台面與上一層石屎地台面之高度距離)(毫米)	3/F to 13/F 3樓至13樓	3150	3150
		3150 [#]	3150 [#]

[#] Inclusive of the sunken depth of the drainage zone on the floor of this floor (300mm)
[#] 包括本層地台跌級排水管層之跌級深度(300毫米)

Notes:

1. The internal areas of the residential properties on the upper floors will generally be slightly larger than those on the lower floors because of the reducing thickness of the structural walls on the upper floors.
2. Please refer to P.26 of this sales brochure for the legends and notes for the floor plan of residential properties.
3. The dimension in floor plans are all structural dimensions in millimetre.

備註:

1. 因住宅物業的較高樓層的結構牆的厚度遞減，較高樓層的內部面積，一般比較低樓層的內部面積稍大。
2. 請參閱本售樓說明書第26頁為住宅物業的樓面平面圖而設之圖例及備註。
3. 樓面平面圖所列的數字為以毫米標示之建築結構尺寸。

10 FLOOR PLANS OF RESIDENTIAL PROPERTIES IN THE DEVELOPMENT

發展項目的住宅物業的樓面平面圖

Jessville Manor Jessville 大宅
G/F Floor Plan 地下樓面平面圖

As-Built Part Plan of Flat B on G/F
地下B單位的實際建造部分平面圖

Note: Please refer to P.23 for details of the alteration works done to Unit B on G/F.
備註: 有關地下B單位之改動工程之詳情, 請參考第23頁。



10 FLOOR PLANS OF RESIDENTIAL PROPERTIES IN THE DEVELOPMENT

發展項目的住宅物業的樓面平面圖

Jessville Manor Jessville 大宅

	Floor 樓層	Units 單位	
		A	B
The thickness of the floor slabs (excluding plaster) of each residential property (mm) 每個住宅物業的樓板(不包括灰泥)的厚度(毫米)		100	100
	G/F	101.6	101.6
	地下	152.4	152.4
		165.1	165.1
The floor-to-floor height (refers to the height between the top surface of the structural slab of a floor and the top surface of the structural slab of its immediate upper floor) of each residential property (mm) 每個住宅物業的層與層之間的高度(指該樓層之石屎地台面與上一層石屎地台面之高度距離)(毫米)	G/F	4520	4520
	地下		

Notes:

1. The internal areas of the residential properties on the upper floors will generally be slightly larger than those on the lower floors because of the reducing thickness of the structural walls on the upper floors.
2. Please refer to P.26 of this sales brochure for the legends and notes for the floor plan of residential properties.
3. The dimension in floor plans are all structural dimensions in millimetre.

備註:

1. 因住宅物業的較高樓層的結構牆的厚度遞減, 較高樓層的內部面積, 一般比較低樓層的內部面積稍大。
2. 請參閱本售樓說明書第26頁為住宅物業的樓面平面圖而設之圖例及備註。
3. 樓面平面圖所列的數字為以毫米標示之建築結構尺寸。

Notes for As-Built Part Plan of Unit B on G/F:

The alteration works done to Unit B on G/F are shown on the as-built part plan on P.22.

The alteration works done to Unit B on G/F are exempted works under the Buildings Ordinance:

- a. The toilet enclosure and door at Bath 1 has been removed.

地下B單位實際建造部份平面圖備註:

地下B單位的改動工程顯示於第22頁的實際建造部份平面圖。

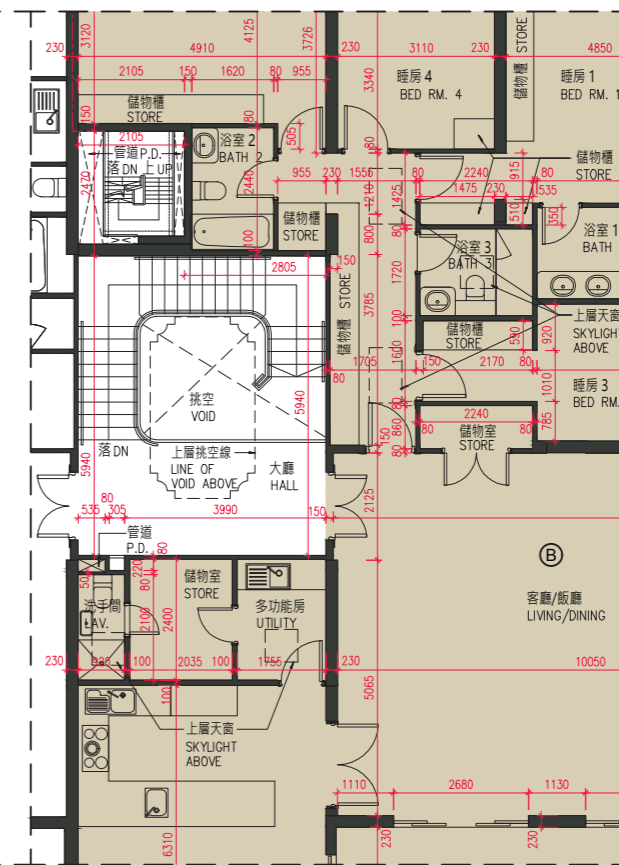
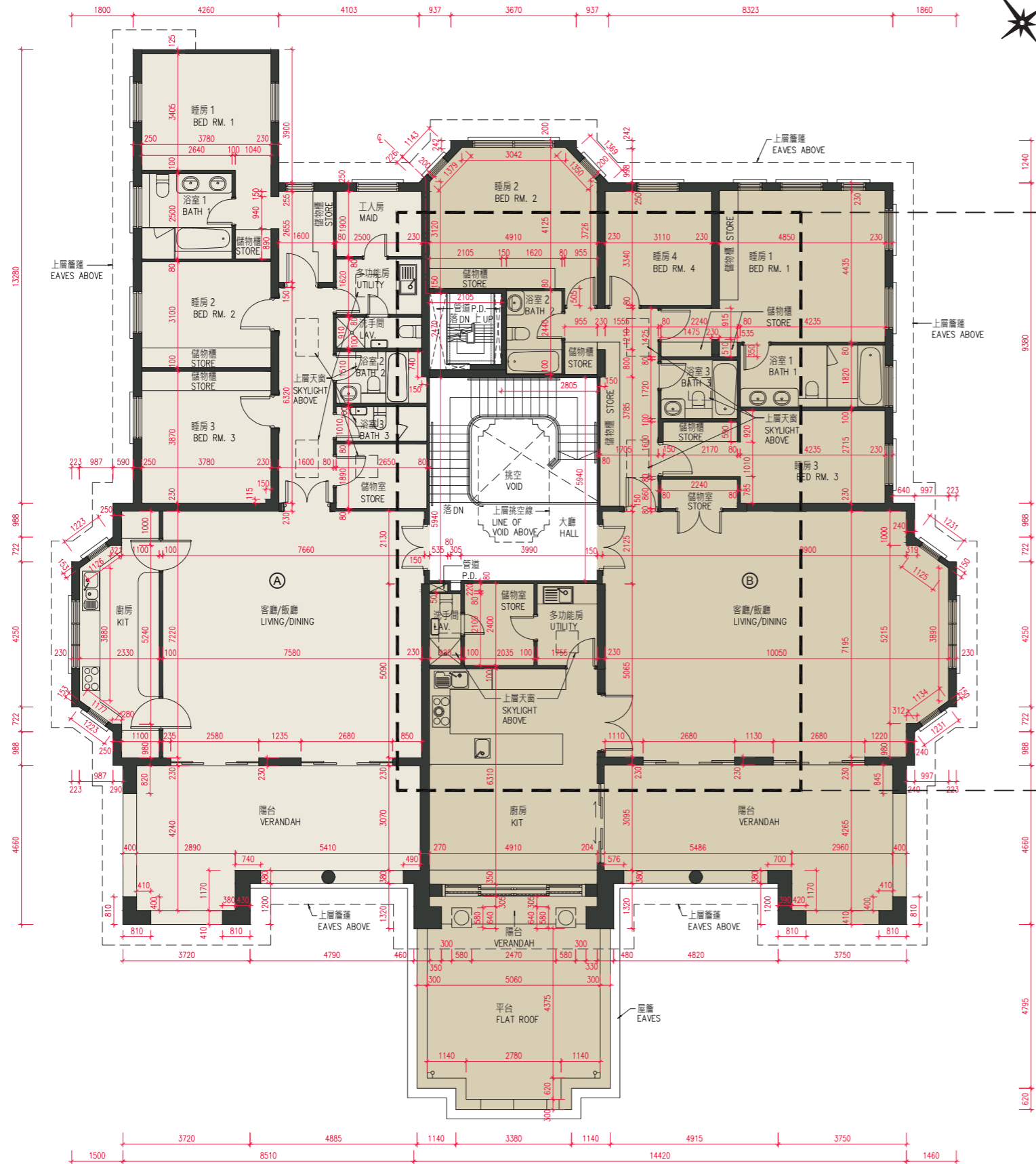
改動工程均為建築物條例下的獲豁免的工程:

- a. 浴室1的廁所圍封牆及門已移除。

10 FLOOR PLANS OF RESIDENTIAL PROPERTIES IN THE DEVELOPMENT

發展項目的住宅物業的樓面平面圖

Jessville Manor Jessville 大宅
1/F Floor Plan 1樓樓面平面圖



As-Built Part Plan of Flat B on 1/F
1樓B單位的實際建造部分平面圖

Note: Please refer to P.25 for details of the alteration works done to Unit B on 1/F.
備註：有關1樓B單位之改動工程之詳情，請參考第25頁。

比例
Scale: 0m/米 5m/米

10 FLOOR PLANS OF RESIDENTIAL PROPERTIES IN THE DEVELOPMENT

發展項目的住宅物業的樓面平面圖

Jessville Manor Jessville 大宅

	Floor 樓層	Units 單位	
		A	B
		100	
The thickness of the floor slabs (excluding plaster) of each residential property (mm) 每個住宅物業的樓板(不包括灰泥)的厚度(毫米)	1/F 1樓	101.6 127 139.7 152.4	101.6 127 139.7 152.4
The floor-to-floor height (refers to the height between the top surface of the structural slab of a floor and the top surface of the structural slab of its immediate upper floor) of each residential property (mm) 每個住宅物業的層與層之間的高度(指該樓層之石屎地台面與上一層石屎地台面之高度距離)(毫米)	1/F 1樓	4320	4320

Notes:

- The internal areas of the residential properties on the upper floors will generally be slightly larger than those on the lower floors because of the reducing thickness of the structural walls on the upper floors.
- Please refer to P.26 of this sales brochure for the legends and notes for the floor plan of residential properties.
- The dimension in floor plans are all structural dimensions in millimetre.

備註:

- 因住宅物業的較高樓層的結構牆的厚度遞減,較高樓層的內部面積,一般比較低樓層的內部面積稍大。
- 請參閱本售樓說明書第26頁為住宅物業的樓面平面圖而設之圖例及備註。
- 樓面平面圖所列的數字為以毫米標示之建築結構尺寸。

Notes for As-Built Part Plan of Unit B on 1/F:

The alteration works done to Unit B on 1/F are shown on the as-built part plan on P.24.

The alteration works done to Unit B on 1/F are exempted works under the Buildings Ordinance:

- The size of the cabinet in the Kitchen has been reduced.
- The bathtub has been replaced with a shower in Bathroom 3.
- Store has been provided at Bedroom 4.

1樓B單位實際建造部份平面圖備註:

1樓B單位的改動工程顯示於第24頁的實際建造部份平面圖。

改動工程均為建築物條例下的獲豁免的工程:

- 位於廚房的廚櫃的尺寸已縮少。
- 位於浴室3的浴缸已被淋浴取代。
- 睡房4已裝設儲物櫃。

10 FLOOR PLANS OF RESIDENTIAL PROPERTIES IN THE DEVELOPMENT

發展項目的住宅物業的樓面平面圖

The notes and legends on this page apply to all pages of “Floor plans of residential properties in the Development”.
 在本頁上備註和圖例適用於全部的「發展項目的住宅物業的樓面平面圖」頁數。

Legends of the Floor Plans 樓面平面圖圖例

A/C PLATFORM	Air-conditioning Platform	空調機平台
ARCH. FEATURE	Architectural Feature	建築裝飾
BAL.	Balcony	露台
BATH	Bathroom	浴室
BED RM.	Bedroom	睡房
DINING	Dining Room	飯廳
DN	Down	落
E/ELV	Electric Meter Room	電錶房
H.R.	Hose Reel	消防喉轆
KIT	Kitchen	廚房
LAV.	Lavatory	洗手間
LIVING	Living Room	客廳
M BED RM.	Master Bedroom	主人睡房
M BATH	Master Bathroom	主人浴室
MAID	Maid Room	工人房
P.D.	Pipe Duct	管道
R.S.M.R. RM.	Refuse Storage and Material Recovery Room	垃圾及物料回收室
S.S. PLATFORM	Stainless Steel Platform	不銹鋼平台
ST	Staircase	樓梯
STUDY	Study Room	書房
STORE	Store Cabinet / Store Room	儲物櫃 / 儲物室
U.P.	Utility Platform	工作平台
UTILITY	Utility Room	多功能房
WMC	Water Meter Cabinet	水錶房

Notes:

1. Common pipes exposed or enclosed in cladding may be located at the balcony, flat roof, roof or external wall of some residential units.
2. There may be sunken slabs at some parts of the ceiling inside some residential units for the installation of mechanical and electrical services of the floor above or due to the structural, architectural and/or decoration design requirements of the floor above.
3. There may be ceiling bulkheads or false ceiling inside some residential units for the installation of air-conditioning conduits and/or other mechanical and electrical services.
4. The dimensions of the floor plans are all structural dimensions in millimetre.
5. Those icons of fittings and fitments shown on the floor plans of residential properties like bathtubs, wash basins, water closets, shower cubicles, sink units, cabinets (if any) etc. are prepared in accordance with the latest approved building plans. Their shapes, dimensions, scales may be different from the fittings and fitments actually provided and they are for indication and reference only.

備註:

1. 部份住宅單位的露台、平台、天台或外牆或設有外露之公用喉管，或外牆裝飾板內藏有公用喉管。
2. 部份住宅單位內之部份天花或有跌級樓板，用以安裝上層之機電設備或配合上層之結構、建築設計及/或裝修設計上的需要。
3. 部份住宅單位內或設有假陣花或假天花用以安裝冷氣喉管及/或其他機電設備。
4. 樓面平面圖所列之數字為毫米標示之建築結構尺寸。
5. 各住宅物業的樓面平面圖內所展示之裝置及設備的圖標如浴缸、洗面盆、座廁、淋浴間、洗滌盆、櫃(如有)等乃根據最新經批准的建築圖則擬備，並形狀、尺寸、比例或與實際提供的裝置及設備存在差異，僅供示意及參考之用。