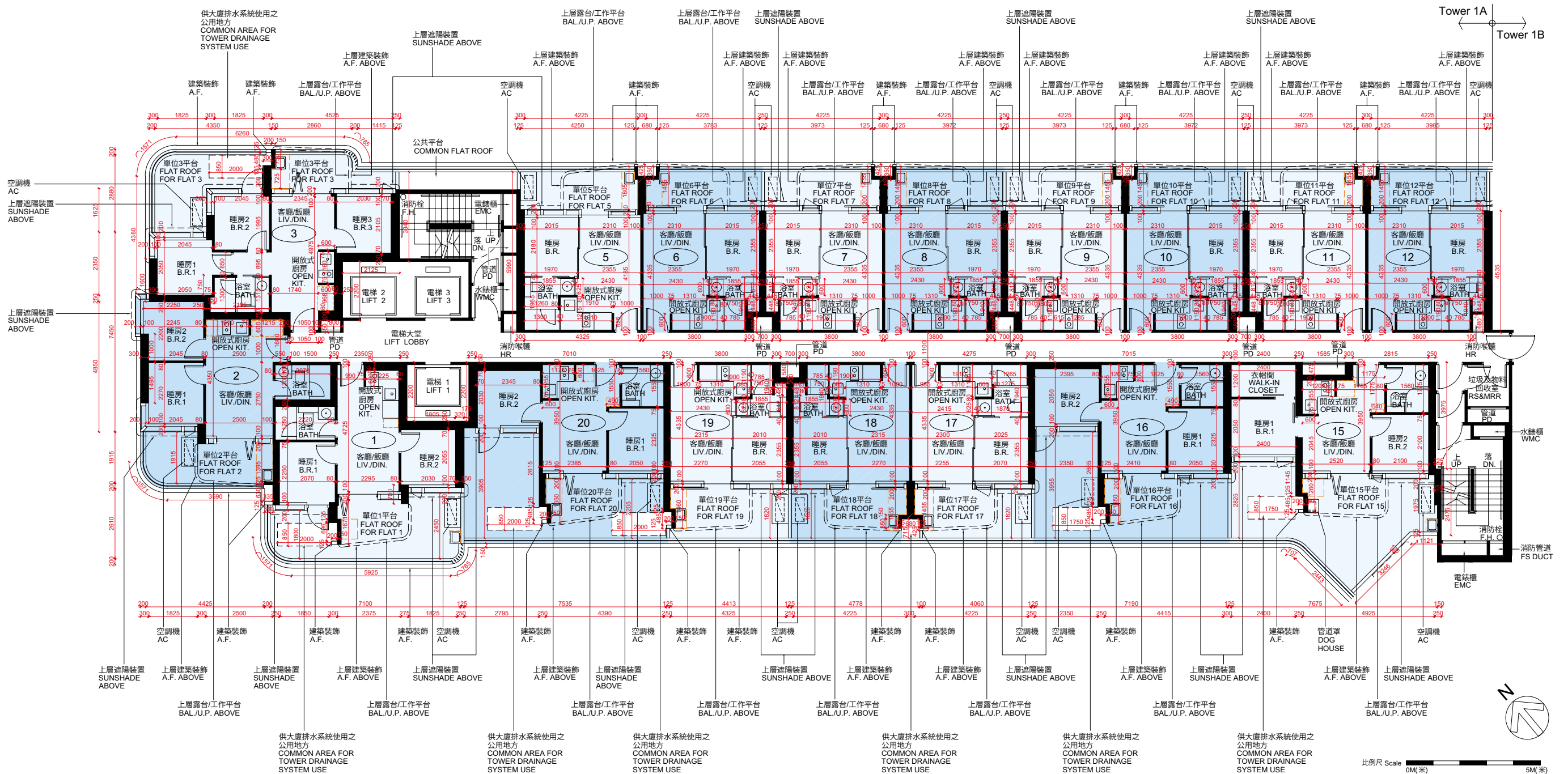


10 期數的住宅物業的樓面平面圖

FLOOR PLANS OF RESIDENTIAL PROPERTIES IN THE PHASE

1A座
TOWER 1A

2樓
2/F



10 期數的住宅物業的樓面平面圖

FLOOR PLANS OF RESIDENTIAL PROPERTIES IN THE PHASE

1A座 Tower 1A																		
每個住宅物業 Each Residential Property	樓層 Floor	單位 Flat																
		1	2	3	5	6	7	8	9	10	11	12	15	16	17	18	19	20
樓板(不包括灰泥)的厚度(毫米) Thickness of Floor Slab (excluding plaster) (mm)	2樓 2/F	160	160	160	160	160	160	160	160	160	160	160	160	160	160	160	160	160
層與層之間的高度(毫米) Floor-to-Floor Height (mm)		3150, 3470, 3500	3150, 3470, 3500	3150, 3470, 3500	3150, 3470, 3500	3150, 3470, 3500	3150, 3470, 3500	3150, 3470, 3500	3150, 3470, 3500	3150, 3470, 3500	3150, 3470, 3500	3150, 3470, 3500	3150, 3470, 3500	3150, 3470, 3500	3150, 3470, 3500	3150, 3470, 3500	3150, 3470, 3500	3150, 3470, 3500

因住宅物業的較高樓層的結構牆的厚度遞減，較高樓層的內部面積，一般比較低樓層的內部面積稍大。

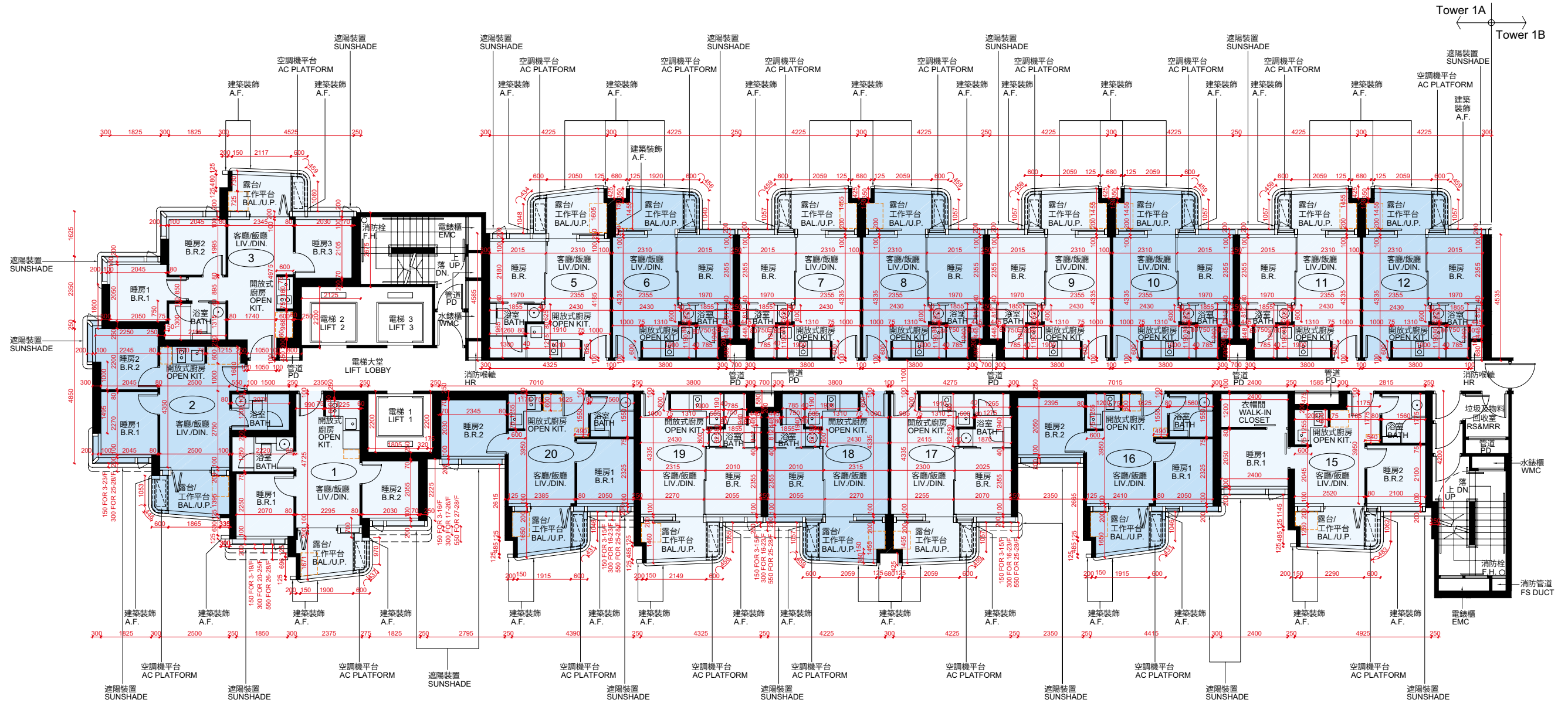
The internal areas of the residential properties on the upper floors will generally be slightly larger than those on the lower floors because of the reducing thickness of the structural walls on the upper floors.

請參閱本售樓說明書第44頁為住宅物業樓面平面圖而設之備註和圖例。

Please refer to page 44 of this sales brochure for the notes and legends for the floor plans of residential properties.

10 期數的住宅物業的樓面平面圖 FLOOR PLANS OF RESIDENTIAL PROPERTIES IN THE PHASE

1A座 3樓、5樓 - 12樓、15樓 - 23樓及25樓 - 26樓
TOWER 1A 3/F, 5/F - 12/F, 15/F - 23/F & 25/F - 26/F



比例尺 Scale 0M(米) 5M(米)

10 期數的住宅物業的樓面平面圖

FLOOR PLANS OF RESIDENTIAL PROPERTIES IN THE PHASE

1A座 Tower 1A																		
每個住宅物業 Each Residential Property	樓層 Floor	單位 Flat																
		1	2	3	5	6	7	8	9	10	11	12	15	16	17	18	19	20
樓板(不包括灰泥)的厚度(毫米) Thickness of Floor Slab (excluding plaster) (mm)	3樓、5樓 - 12樓、 15樓 - 23樓及 25樓 - 26樓	160	160	160	160	160	160	160	160	160	160	160	160	160	160	160	160	160
層與層之間的高度(毫米) Floor-to-Floor Height (mm)	3/F, 5/F - 12/F, 15/F - 23/F & 25/F - 26/F	3150, 3470, 3500	3150, 3470, 3500	3150, 3470, 3500	3150, 3470, 3500	3150, 3470, 3500	3150, 3470, 3500	3150, 3470, 3500	3150, 3470, 3500	3150, 3470, 3500	3150, 3470, 3500	3150, 3470, 3500	3150, 3470, 3500	3150, 3470, 3500	3150, 3470, 3500	3150, 3470, 3500	3150, 3470, 3500	

因住宅物業的較高樓層的結構牆的厚度遞減，較高樓層的內部面積，一般比較低樓層的內部面積稍大。

The internal areas of the residential properties on the upper floors will generally be slightly larger than those on the lower floors because of the reducing thickness of the structural walls on the upper floors.

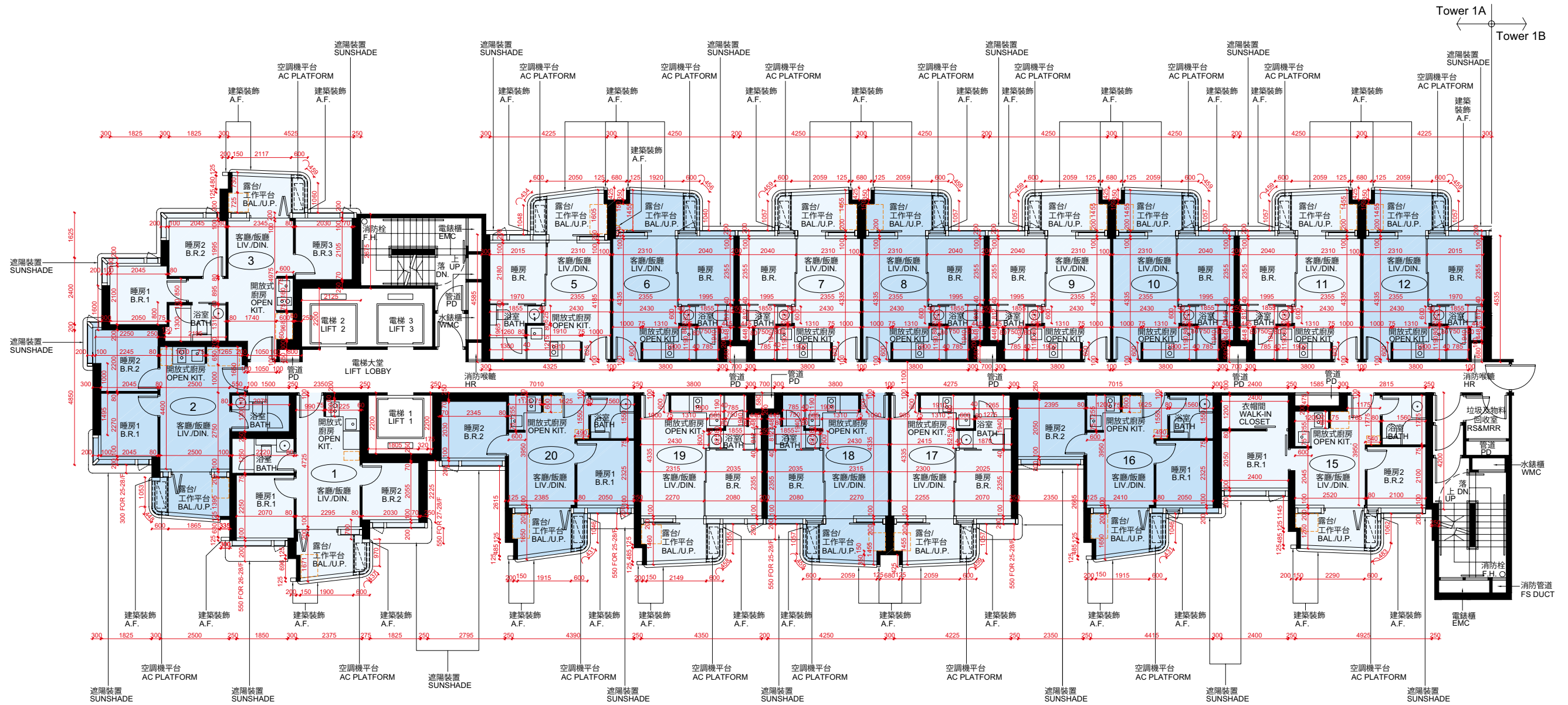
請參閱本售樓說明書第44頁為住宅物業樓面平面圖而設之備註和圖例。

Please refer to page 44 of this sales brochure for the notes and legends for the floor plans of residential properties.

10 期數的住宅物業的樓面平面圖

FLOOR PLANS OF RESIDENTIAL PROPERTIES IN THE PHASE

1A座 27樓 - 28樓
TOWER 1A 27樓 - 28/F



比例尺 Scale 0M(米) 5M(米)

10 期數的住宅物業的樓面平面圖

FLOOR PLANS OF RESIDENTIAL PROPERTIES IN THE PHASE

1A座 Tower 1A																		
每個住宅物業 Each Residential Property	樓層 Floor	單位 Flat																
		1	2	3	5	6	7	8	9	10	11	12	15	16	17	18	19	20
樓板(不包括灰泥)的厚度(毫米) Thickness of Floor Slab (excluding plaster) (mm)	27樓 27/F	160	160	160	160	160	160	160	160	160	160	160	160	160	160	160	160	160
層與層之間的高度(毫米) Floor-to-Floor Height (mm)		3150, 3470, 3500	3150, 3470, 3500	3150, 3470, 3500	3150, 3470, 3500	3150, 3470, 3500	3150, 3470, 3500	3150, 3470, 3500	3150, 3470, 3500	3150, 3470, 3500	3150, 3470, 3500	3150, 3470, 3500	3150, 3470, 3500	3150, 3470, 3500	3150, 3470, 3500	3150, 3470, 3500	3150, 3470, 3500	3150, 3470, 3500
每個住宅物業 Each Residential Property	樓層 Floor	單位 Flat																
		1	2	3	5	6	7	8	9	10	11	12	15	16	17	18	19	20
樓板(不包括灰泥)的厚度(毫米) Thickness of Floor Slab (excluding plaster) (mm)	28樓 28/F	160, 175, 310	160, 175	160, 175	160	160	160	160	160	160	160	160	160	160	160	160	160	160
層與層之間的高度(毫米) Floor-to-Floor Height (mm)		3150, 3170, 3350, 3500	3170, 3350, 3500	3150, 3170, 3470, 3500	3150, 3470, 3500	3150, 3470, 3500	3150, 3470, 3500	3150, 3470, 3500	3150, 3470, 3500	3150, 3470, 3500	3150, 3470, 3500	3150, 3470, 3500	3150, 3470, 3500	3150, 3470, 3500	3150, 3470, 3500	3150, 3470, 3500	3150, 3470, 3500	3150, 3470, 3500

因住宅物業的較高樓層的結構牆的厚度遞減，較高樓層的內部面積，一般比較低樓層的內部面積稍大。

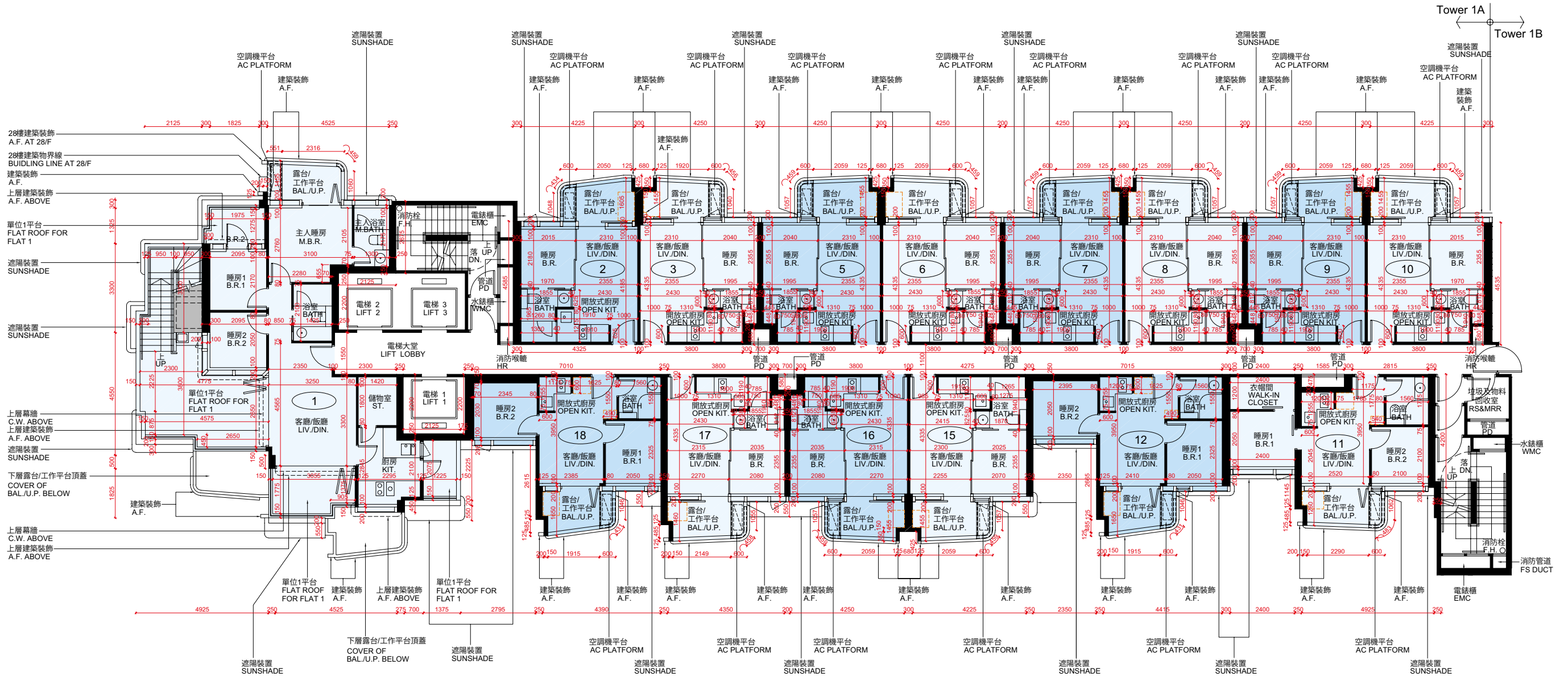
The internal areas of the residential properties on the upper floors will generally be slightly larger than those on the lower floors because of the reducing thickness of the structural walls on the upper floors.

請參閱本售樓說明書第44頁為住宅物業樓面平面圖而設之備註和圖例。

Please refer to page 44 of this sales brochure for the notes and legends for the floor plans of residential properties.

10 期數的住宅物業的樓面平面圖 FLOOR PLANS OF RESIDENTIAL PROPERTIES IN THE PHASE

1A座 TOWER 1A
29樓 29/F



比例尺 Scale 0M(米) 5M(米)

10 期數的住宅物業的樓面平面圖

FLOOR PLANS OF RESIDENTIAL PROPERTIES IN THE PHASE

1A座 Tower 1A																
每個住宅物業 Each Residential Property	樓層 Floor	單位 Flat														
		1	2	3	5	6	7	8	9	10	11	12	15	16	17	18
樓板(不包括灰泥)的厚度(毫米) Thickness of Floor Slab (excluding plaster) (mm)	29樓 29/F	160, 175	160, 175	160, 175	160, 175	160, 175	160, 175	160, 175	160, 175	160, 175	160, 175	160, 175	160, 175	160, 175	160, 175	160, 175
層與層之間的高度(毫米) Floor-to-Floor Height (mm)		3800	3800	3800	3800	3800	3800	3800	3800	3800	3800	3800	3800	3800	3800	3800

因住宅物業的較高樓層的結構牆的厚度遞減，較高樓層的內部面積，一般比較低樓層的內部面積稍大。

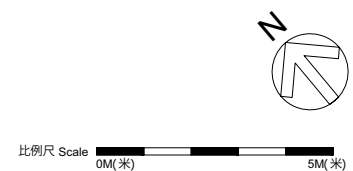
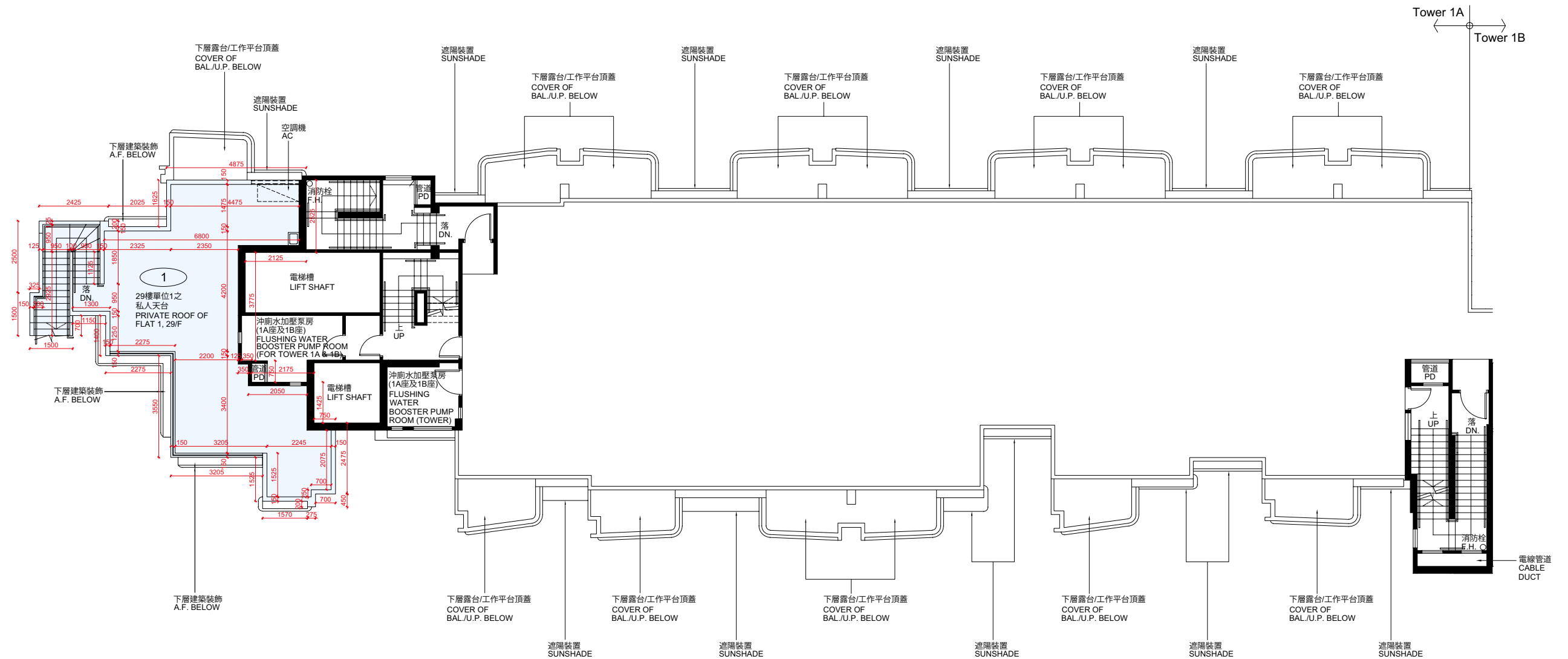
The internal areas of the residential properties on the upper floors will generally be slightly larger than those on the lower floors because of the reducing thickness of the structural walls on the upper floors.

請參閱本售樓說明書第44頁為住宅物業樓面平面圖而設之備註和圖例。

Please refer to page 44 of this sales brochure for the notes and legends for the floor plans of residential properties.

10 期數的住宅物業的樓面平面圖 FLOOR PLANS OF RESIDENTIAL PROPERTIES IN THE PHASE

1A座 天台
TOWER 1A MAIN ROOF



10 期數的住宅物業的樓面平面圖

FLOOR PLANS OF RESIDENTIAL PROPERTIES IN THE PHASE

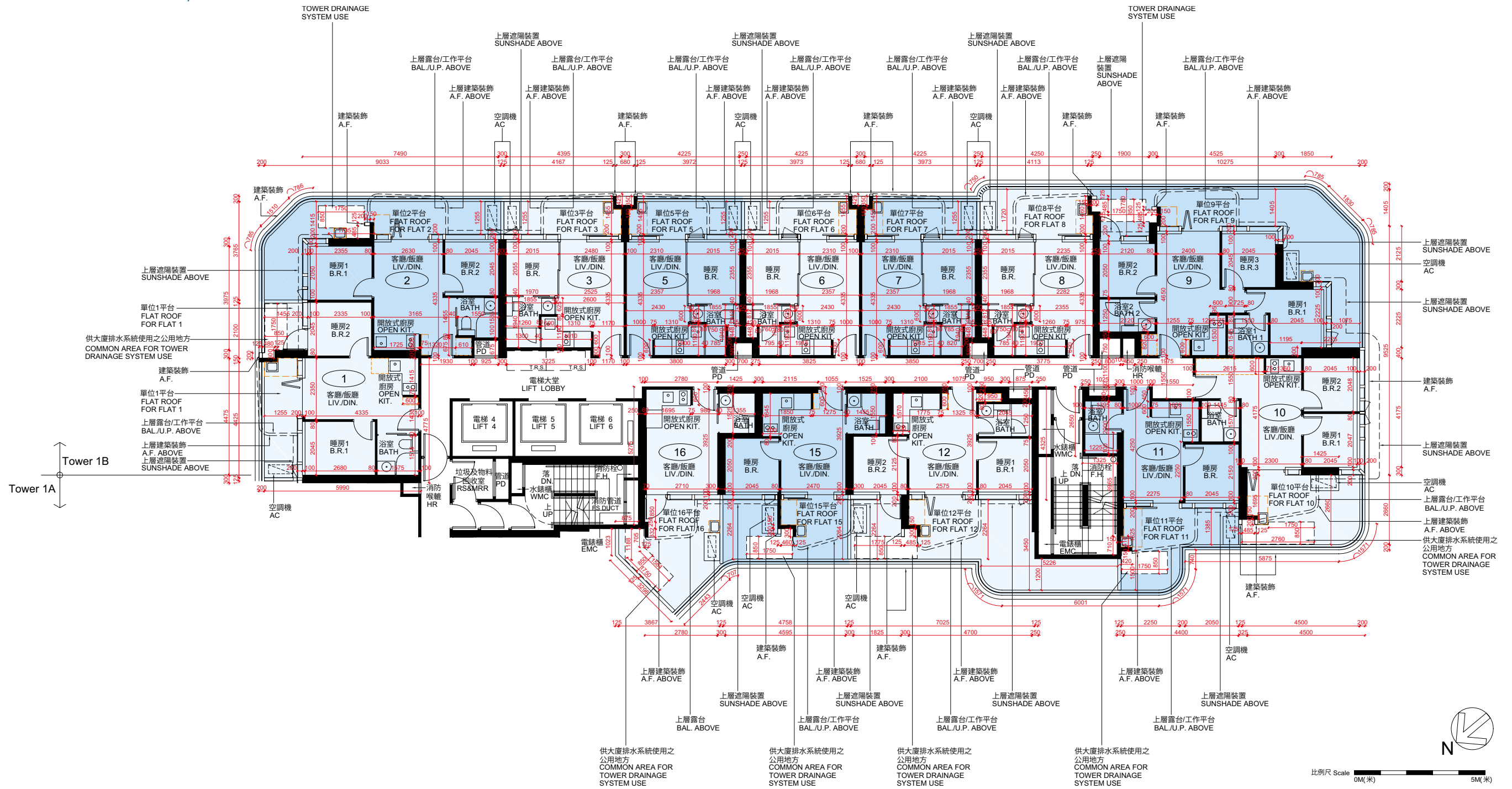
1A座 Tower 1A		
每個住宅物業 Each Residential Property	樓層 Floor	單位 Flat
		1
樓板(不包括灰泥)的厚度(毫米) Thickness of Floor Slab (excluding plaster) (mm)	天台 Main Roof	不適用 Not Applicable
層與層之間的高度(毫米) Floor-to-Floor Height (mm)		

請參閱本售樓說明書第44頁為住宅物業樓面平面圖而設之備註和圖例。

Please refer to page 44 of this sales brochure for the notes and legends for the floor plans of residential properties.

10 期數的住宅物業的樓面平面圖 FLOOR PLANS OF RESIDENTIAL PROPERTIES IN THE PHASE

1B座 2樓
TOWER 1B 2/F



10 期數的住宅物業的樓面平面圖

FLOOR PLANS OF RESIDENTIAL PROPERTIES IN THE PHASE

1B座 Tower 1B														
每個住宅物業 Each Residential Property	樓層 Floor	單位 Flat												
		1	2	3	5	6	7	8	9	10	11	12	15	16
樓板(不包括灰泥)的厚度(毫米) Thickness of Floor Slab (excluding plaster) (mm)	2樓 2/F	160	160	160	160	160	160	160	160	160	160	160	160	160
層與層之間的高度(毫米) Floor-to-Floor Height (mm)		3150, 3470, 3500	3150, 3470, 3500	3150, 3470, 3500	3150, 3470, 3500	3150, 3470, 3500	3150, 3470, 3500	3150, 3470, 3500	3150, 3470, 3500	3150, 3470, 3500	3150, 3470, 3500	3150, 3470, 3500	3150, 3470, 3500	3150, 3470, 3500

因住宅物業的較高樓層的結構牆的厚度遞減，較高樓層的內部面積，一般比較低樓層的內部面積稍大。

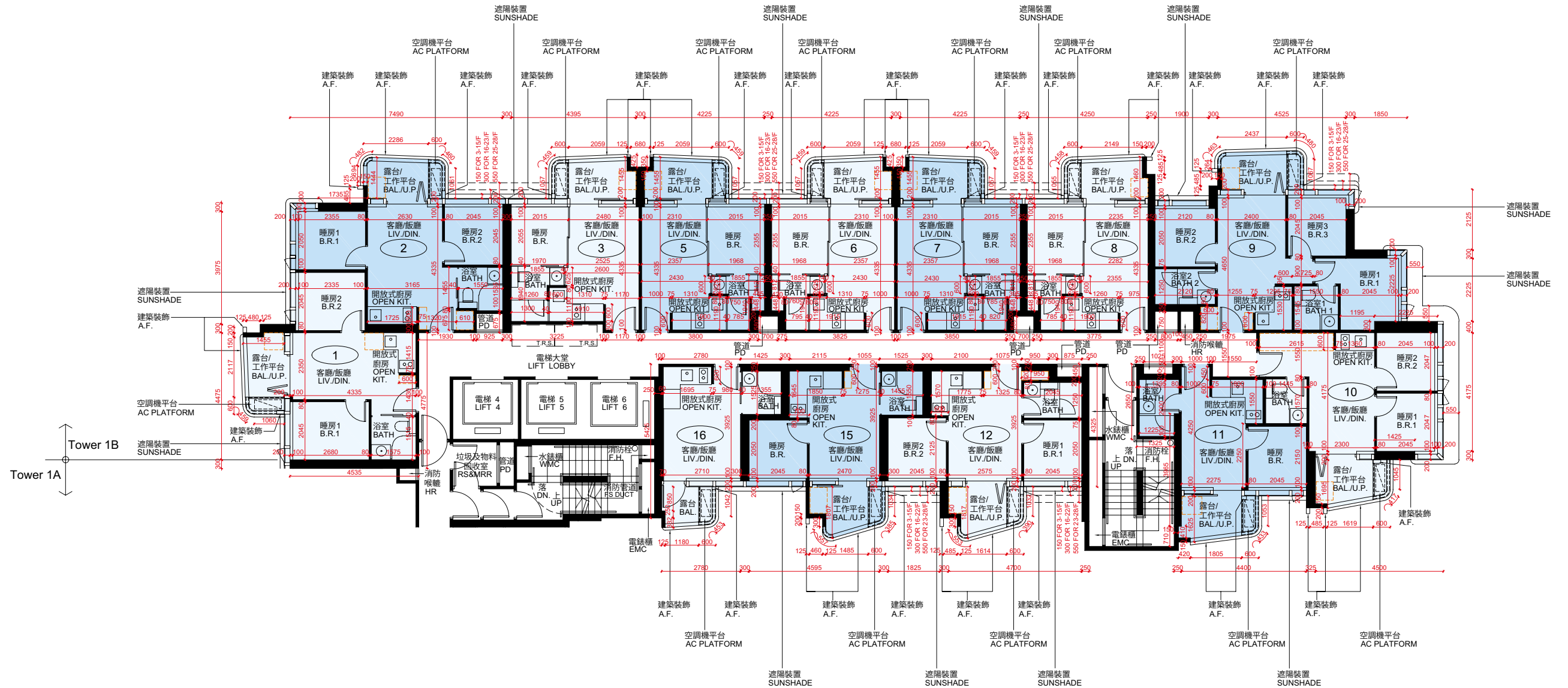
The internal areas of the residential properties on the upper floors will generally be slightly larger than those on the lower floors because of the reducing thickness of the structural walls on the upper floors.

請參閱本售樓說明書第44頁為住宅物業樓面平面圖而設之備註和圖例。

Please refer to page 44 of this sales brochure for the notes and legends for the floor plans of residential properties.

10 期數的住宅物業的樓面平面圖 FLOOR PLANS OF RESIDENTIAL PROPERTIES IN THE PHASE

1B座 3樓、5樓 - 12樓、15樓 - 23樓及25樓 - 26樓
TOWER 1B 3/F, 5/F - 12/F, 15/F - 23/F & 25/F - 26/F



比例尺 Scale 0M(米) 5M(米)

10 期數的住宅物業的樓面平面圖

FLOOR PLANS OF RESIDENTIAL PROPERTIES IN THE PHASE

1B座 Tower 1B														
每個住宅物業 Each Residential Property	樓層 Floor	單位 Flat												
		1	2	3	5	6	7	8	9	10	11	12	15	16
樓板(不包括灰泥)的厚度(毫米) Thickness of Floor Slab (excluding plaster) (mm)	3樓、5樓 - 12樓、 15樓 - 23樓及 25樓 - 26樓	160	160	160	160	160	160	160	160	160	160	160	160	160
層與層之間的高度(毫米) Floor-to-Floor Height (mm)	3/F, 5/F - 12/F, 15/F - 23/F & 25/F - 26/F	3150, 3470, 3500	3150, 3470, 3500	3150, 3470, 3500	3150, 3470, 3500	3150, 3470, 3500	3150, 3470, 3500	3150, 3470, 3500	3150, 3470, 3500	3150, 3470, 3500	3150, 3470, 3500	3150, 3470, 3500	3150, 3470, 3500	3150, 3470, 3500

因住宅物業的較高樓層的結構牆的厚度遞減，較高樓層的內部面積，一般比較低樓層的內部面積稍大。

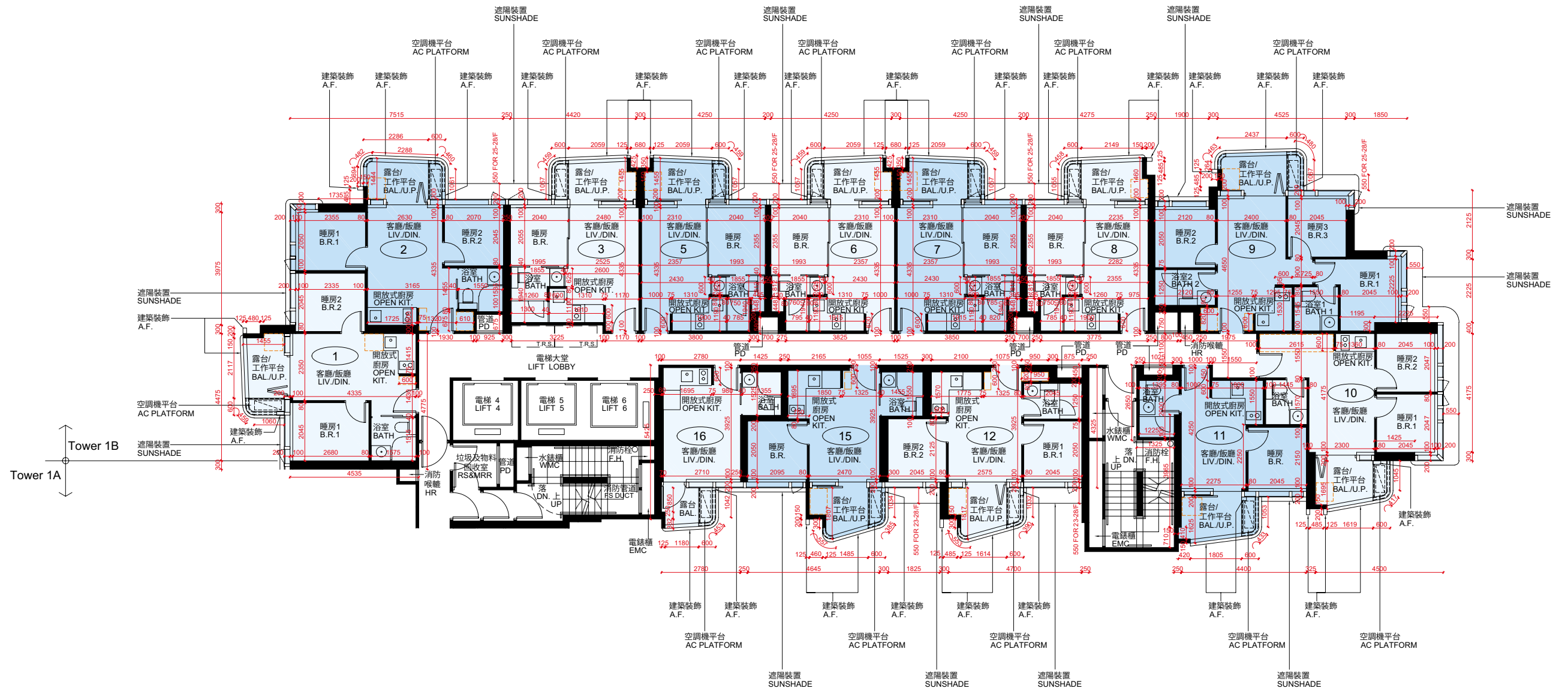
The internal areas of the residential properties on the upper floors will generally be slightly larger than those on the lower floors because of the reducing thickness of the structural walls on the upper floors.

請參閱本售樓說明書第44頁為住宅物業樓面平面圖而設之備註和圖例。

Please refer to page 44 of this sales brochure for the notes and legends for the floor plans of residential properties.

10 期數的住宅物業的樓面平面圖 FLOOR PLANS OF RESIDENTIAL PROPERTIES IN THE PHASE

1B座 27樓 - 28樓
TOWER 1B 27樓 - 28/F



10 期數的住宅物業的樓面平面圖

FLOOR PLANS OF RESIDENTIAL PROPERTIES IN THE PHASE

1B座 Tower 1B														
每個住宅物業 Each Residential Property	樓層 Floor	單位 Flat												
		1	2	3	5	6	7	8	9	10	11	12	15	16
樓板(不包括灰泥)的厚度(毫米) Thickness of Floor Slab (excluding plaster) (mm)	27樓 27/F	160	160	160	160	160	160	160	160	160	160	160	160	160
層與層之間的高度(毫米) Floor-to-Floor Height (mm)		3150, 3470, 3500	3150, 3470, 3500	3150, 3470, 3500	3150, 3470, 3500	3150, 3470, 3500	3150, 3470, 3500	3150, 3470, 3500	3150, 3470, 3500	3150, 3470, 3500	3150, 3470, 3500	3150, 3470, 3500	3150, 3470, 3500	3150, 3470, 3500
每個住宅物業 Each Residential Property	樓層 Floor	單位 Flat												
		1	2	3	5	6	7	8	9	10	11	12	15	16
樓板(不包括灰泥)的厚度(毫米) Thickness of Floor Slab (excluding plaster) (mm)	28樓 28/F	160, 175	160, 175	160	160	160	160	160	160, 175	160, 175	160, 175	160	160	160
層與層之間的高度(毫米) Floor-to-Floor Height (mm)		3150, 3170, 3350, 3500	3150, 3170, 3470, 3500	3150, 3470, 3500	3150, 3470, 3500	3150, 3470, 3500	3150, 3470, 3500	3150, 3470, 3500	3150, 3470, 3500	3150, 3170, 3470, 3500	3170, 3350, 3500	3150, 3170, 3470, 3500	3150, 3470, 3500	3150, 3470, 3500

因住宅物業的較高樓層的結構牆的厚度遞減，較高樓層的內部面積，一般比較低樓層的內部面積稍大。

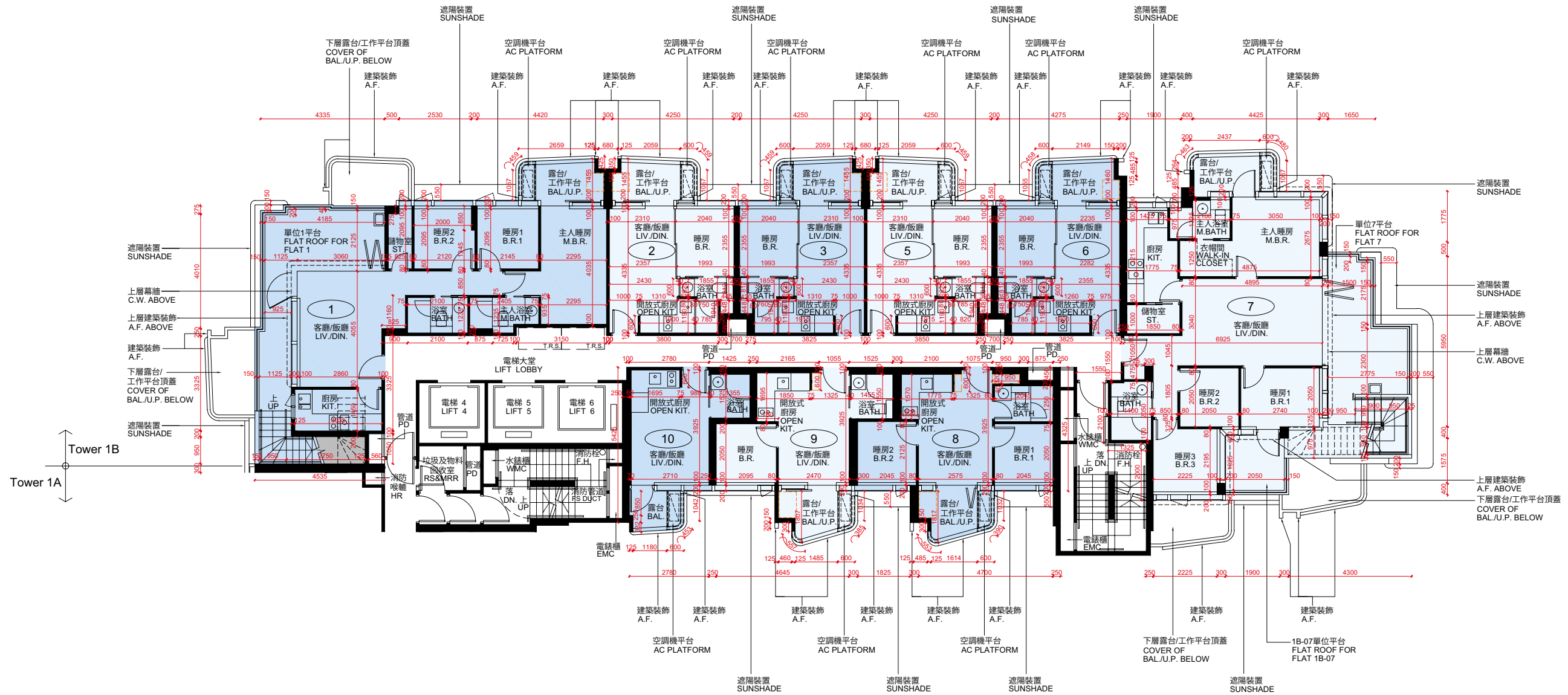
The internal areas of the residential properties on the upper floors will generally be slightly larger than those on the lower floors because of the reducing thickness of the structural walls on the upper floors.

請參閱本售樓說明書第44頁為住宅物業樓面平面圖而設之備註和圖例。

Please refer to page 44 of this sales brochure for the notes and legends for the floor plans of residential properties.

10 期數的住宅物業的樓面平面圖 FLOOR PLANS OF RESIDENTIAL PROPERTIES IN THE PHASE

1B座 29樓
TOWER 1B 29/F



比例尺 Scale 0M(米) 5M(米)

10 期數的住宅物業的樓面平面圖

FLOOR PLANS OF RESIDENTIAL PROPERTIES IN THE PHASE

1B座 Tower 1B										
每個住宅物業 Each Residential Property	樓層 Floor	單位 Flat								
		1	2	3	5	6	7	8	9	10
樓板(不包括灰泥)的厚度(毫米) Thickness of Floor Slab (excluding plaster) (mm)	29樓 29/F	160, 175	160, 175	160, 175	160, 175	160, 175	160, 175, 200	160, 175	160, 175, 250	160, 175
層與層之間的高度(毫米) Floor-to-Floor Height (mm)		3800	3800	3800	3800	3800	3800	3800	3800	3800

因住宅物業的較高樓層的結構牆的厚度遞減，較高樓層的內部面積，一般比較低樓層的內部面積稍大。

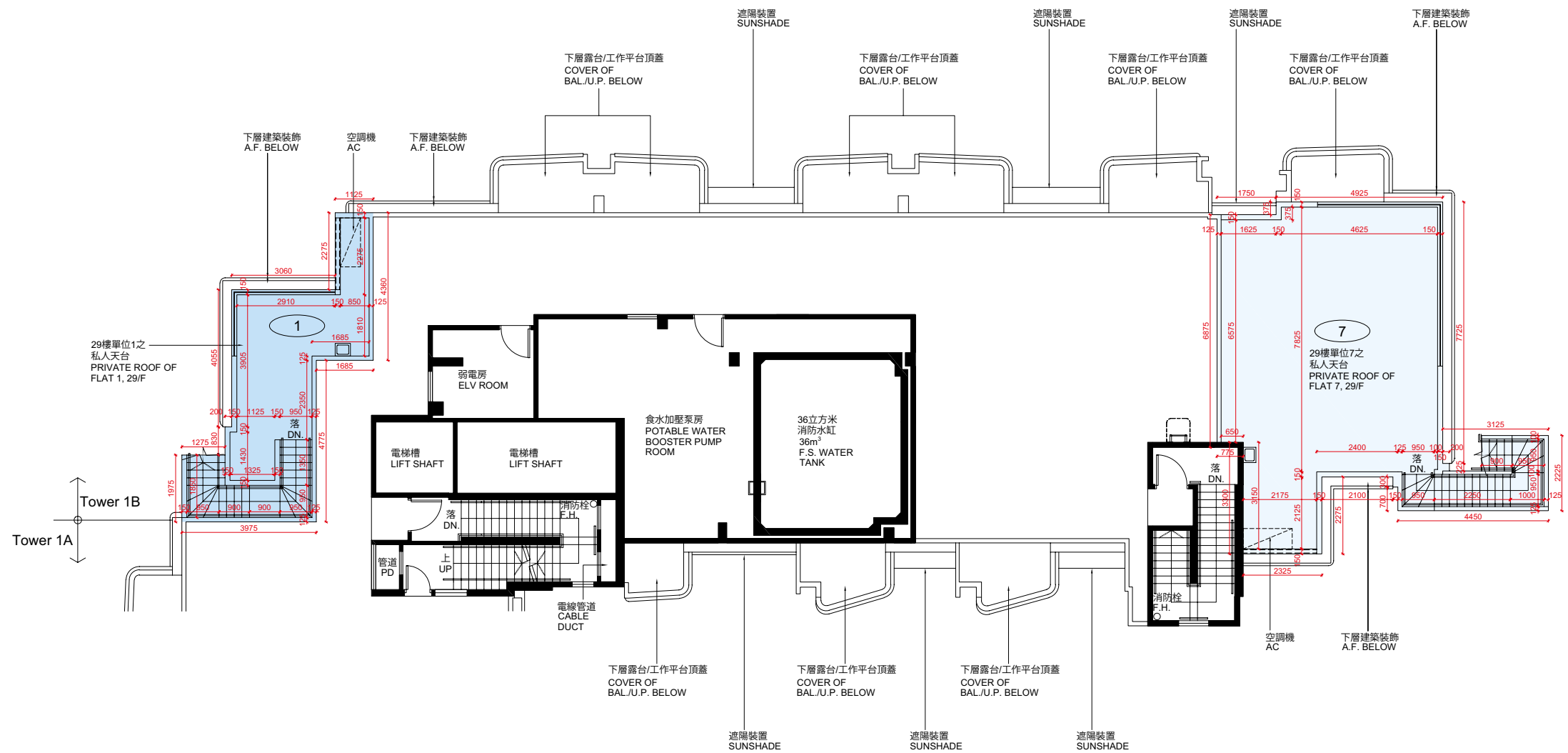
The internal areas of the residential properties on the upper floors will generally be slightly larger than those on the lower floors because of the reducing thickness of the structural walls on the upper floors.

請參閱本售樓說明書第44頁為住宅物業樓面平面圖而設之備註和圖例。

Please refer to page 44 of this sales brochure for the notes and legends for the floor plans of residential properties.

10 期數的住宅物業的樓面平面圖 FLOOR PLANS OF RESIDENTIAL PROPERTIES IN THE PHASE

1B座 天台
TOWER 1B MAIN ROOF



比例尺 Scale 0M(米) 5M(米)

10 期數的住宅物業的樓面平面圖

FLOOR PLANS OF RESIDENTIAL PROPERTIES IN THE PHASE

1B座 Tower 1B			
每個住宅物業 Each Residential Property	樓層 Floor	單位 Flat	
		1	7
樓板(不包括灰泥)的厚度(毫米) Thickness of Floor Slab (excluding plaster) (mm)	天台 Main Roof	不適用 Not Applicable	
層與層之間的高度(毫米) Floor-to-Floor Height (mm)			

請參閱本售樓說明書第44頁為住宅物業樓面平面圖而設之備註和圖例。

Please refer to page 44 of this sales brochure for the notes and legends for the floor plans of residential properties.

10 期數的住宅物業的樓面平面圖

FLOOR PLANS OF RESIDENTIAL PROPERTIES IN THE PHASE

在本頁上之備註和圖例適用於全部的「期數的住宅物業的樓面平面圖」頁數。
The notes and legends on this page apply to all pages of "Floor plans of residential properties in the Phase".

樓面平面圖圖例 Legends of the Floor Plans

AC PLATFORM	= 空調機平台 Air Conditioning Platform
AC	= 空調機 Air Conditioning Unit
A.F.	= 建築裝飾 Architectural Feature
A.F. ABOVE	= 上層建築裝飾 Architectural Feature Above
BAL	= 露台 Balcony
BAL. ABOVE	= 上層露台 Balcony Above
BAL./U.P	= 露台 / 工作平台 Balcony/Utility Platform
BAL./U.P. ABOVE	= 上層露台 / 工作平台 Balcony/Utility Platform Above
BATH	= 浴室 Bathroom
B.R.	= 睡房 Bedroom
B.R. 1	= 睡房 1 Bedroom 1
B.R. 2	= 睡房 2 Bedroom 2
B.R. 3	= 睡房 3 Bedroom 3
COVER OF BAL. BELOW	= 下層露台頂蓋 Cover of Balcony Below
COVER OF BAL./U.P.BELOW	= 下層露台 / 工作平台頂蓋 Cover of Balcony Below / Utility Platform Below
DIN.	= 飯廳 Dining Room
DN.	= 落 Down
ELV DUCT	= 低壓電線槽 Extra-low Voltage Duct
EMC	= 電錶櫃 Electrical Meter Cabinet
F.H.	= 消防栓 Fire Hydrant
FS DUCT	= 消防管道 Fire Services Duct
HR	= 消防喉轆 Hose Reel
KIT.	= 廚房 Kitchen
LIV.	= 客廳 Living Room
M. BATH.	= 主人浴室 Master Bathroom
M.B.R.	= 主人睡房 Master Bedroom
OPEN KIT.	= 開放式廚房 Open Kitchen
PD	= 管道 Pipe Duct
RS & MRR	= 垃圾及物料回收室 Refuse Storage and Material Recovery Room
SUNSHADE	= 遮陽裝置 Sunshading Device
SUNSHADE ABOVE	= 上層遮陽裝置 Sunshading Device Above
ST.	= 儲物室 Store Room
T.R.S.	= 臨時庇護處 Temporary Refuge Space
UP	= 上 UP
WMC	= 水錶櫃 Water Meter Cabinet
	= 隨樓附送之嵌入式裝置 Built-in fittings provided in the flats

備註：

1. 部分樓層外牆設有建築裝飾及/或遮陽裝置。詳細資料請參考最新批准的建築圖則。
2. 根據發展項目的公契的最新擬稿，公共平台及外牆為公用地方。詳細資料請參考最新批准的建築圖則。
3. 部份住宅單位天花高度將會因應結構、建築設計及/或裝修設計上的需要而有差異。
4. 露台、工作平台及空調機平台為不可封閉的地方。
5. 平面圖所列之數字為以毫米標示之建築結構尺寸。
6. 部份單位有非結構預製外牆。買賣合約之實用面積之計算，包括非結構預製外牆，並由非結構預製外牆之外圍起計。

Notes:

1. There may be architectural features and sunshade on external walls of some floors. For details, please refer to the latest approved building plans.
2. Common flat roof and external walls are common areas under the latest draft Deed of Mutual Covenant of the Development.
3. The internal ceiling height within some residential units may vary due to structural, architectural and/or decoration design variations.
4. Balconies, Utility Platforms and Air Conditioning Platform are non-enclosed area.
5. The dimensions of the floor plans are all structural dimensions in millimeter.
6. There are non-structural prefabricated external walls in some residential properties. The Saleable Area as defined in the formal agreement for sale and purchase of a residential property has included the non-structural prefabricated external walls and is measured form the exterior of such non-structural prefabricated external walls.