

# Cross-section plan of building in the development

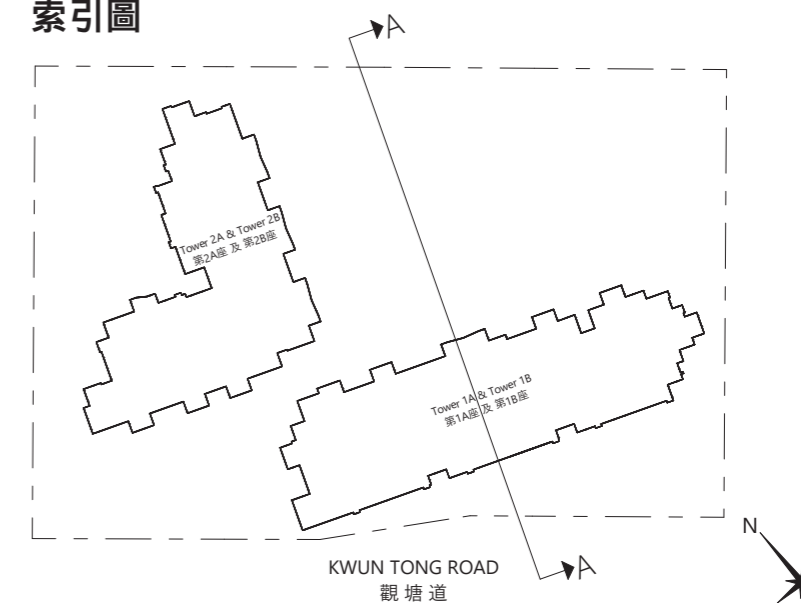
## 發展項目中的建築物的橫截面圖

### Cross-Section Plan A-A 橫截面圖 A-A

Tower 1A & Tower 1B  
第1A座及第1B座

	Top Roof 頂層天台
Roof 天台	Roof 天台
42/F	Residential Units 住宅單位
41/F	Residential Units 住宅單位
40/F	Residential Units 住宅單位
39/F	Residential Units 住宅單位
38/F	Residential Units 住宅單位
37/F	Residential Units 住宅單位
36/F	Residential Units 住宅單位
35/F	Residential Units 住宅單位
33/F	Residential Units 住宅單位
32/F	Residential Units 住宅單位
31/F	Residential Units 住宅單位
30/F	Residential Units 住宅單位
29/F	Residential Units 住宅單位
28/F	Recreational Facilities 康樂設施
Transfer Plate 轉力層	
27/F	Refuge Floor & Sky Garden 庇護層及空中花園
26/F	Residential Units 住宅單位
25/F	Residential Units 住宅單位
23/F	Residential Units 住宅單位
22/F	Residential Units 住宅單位
21/F	Residential Units 住宅單位
20/F	Residential Units 住宅單位
19/F	Residential Units 住宅單位
18/F	Residential Units 住宅單位
17/F	Residential Units 住宅單位
16/F	Residential Units 住宅單位
15/F	Residential Units 住宅單位
12/F	Residential Units 住宅單位
11/F	Residential Units 住宅單位
10/F	Residential Units 住宅單位
9/F	Residential Units 住宅單位
8/F	Residential Units 住宅單位
7/F	Residential Units 住宅單位
6/F	Residential Units 住宅單位
5/F	Residential Units 住宅單位
Transfer Plate 轉力層	
3/F	Covered Landscape 有蓋園景區
2/F	Shop 商舖
1/F	Shop 商舖
G/F	Shop 商舖
B1/F	Carpark / Electrical and Mechanical Room 停車場 / 機電房
B2/F	Carpark / Electrical and Mechanical Room 停車場 / 機電房

### Key Plan 索引圖

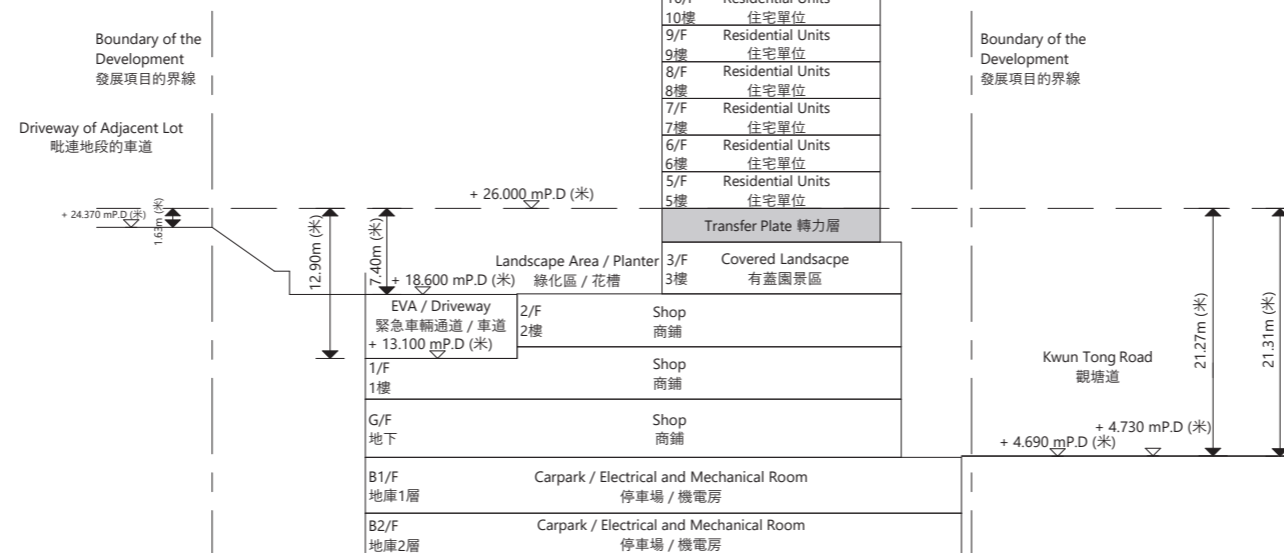


- Dotted line denotes the level of the lowest residential floor  
虛線代表最低住宅樓層水平
- EVA Denotes emergency vehicular access  
代表緊急車輛通道
- ▽ Denotes height above the Hong Kong Principal Datum (PD) (Metre)  
代表香港主水平基準以上高度(米)

Remark: This cross-section plan is not drawn to scale  
備註：此橫截面圖並非按照比例繪圖

The part of Emergency Vehicular Access/Driveway adjacent to the building is 13.100 to 18.600 metres above the Hong Kong Principal Datum.  
毗連建築物的一段緊急車輛通道/行車通道為香港主水平基準以上13.100至18.600米。

The part of the Driveway of Adjacent Lot adjacent to the building is 24.370 meters above the Hong Kong Principal Datum.  
毗連建築物的一段毗連地段的車道為香港主水平基準以上24.370米。



The part of Kwun Tong Road adjacent to the building is 4.690 to 4.730 metres above the Hong Kong Principal Datum.  
毗連建築物的一段觀塘道為香港主水平基準以上4.690至4.730米。

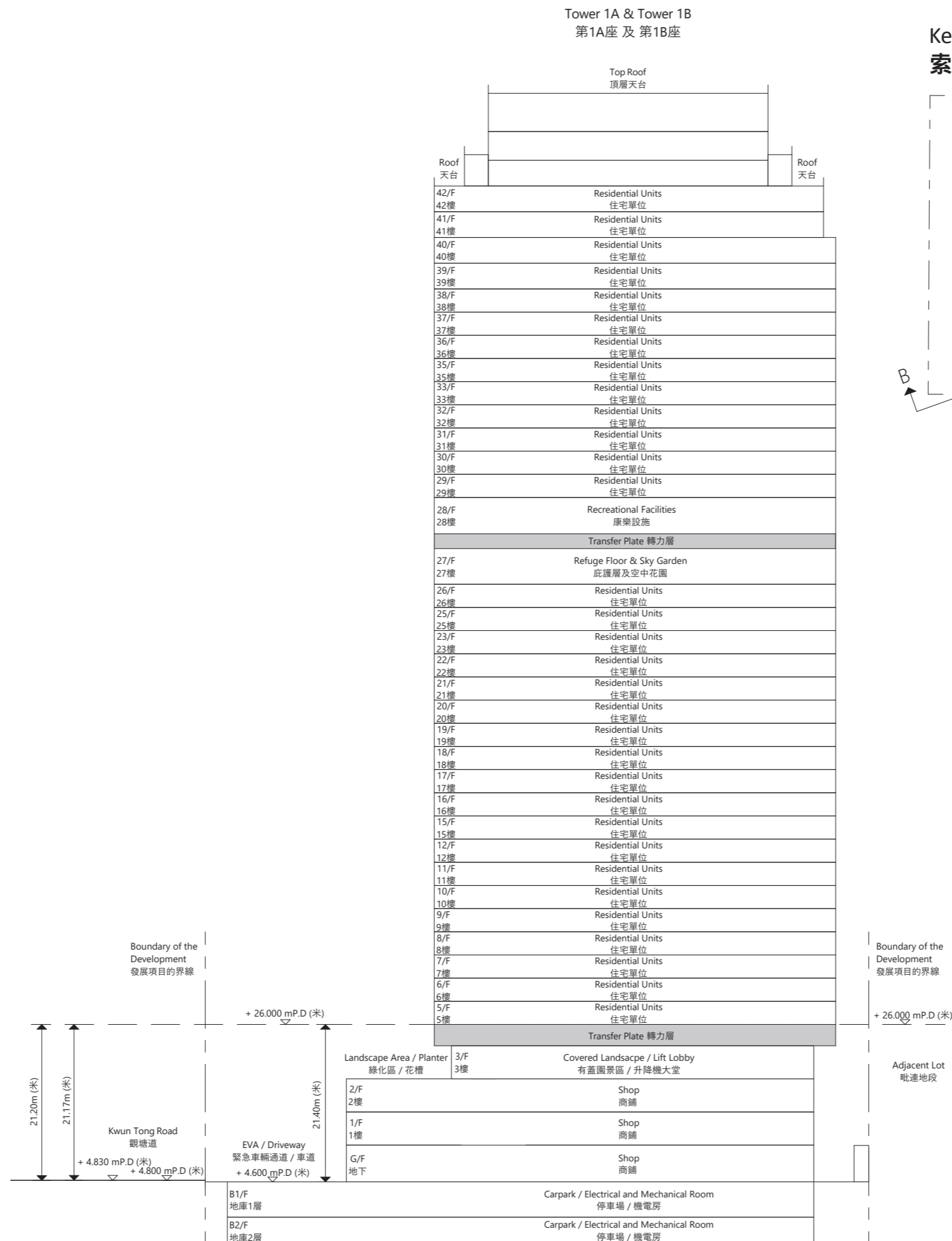
# Cross-section plan of building in the development

## 發展項目中的建築物的橫截面圖

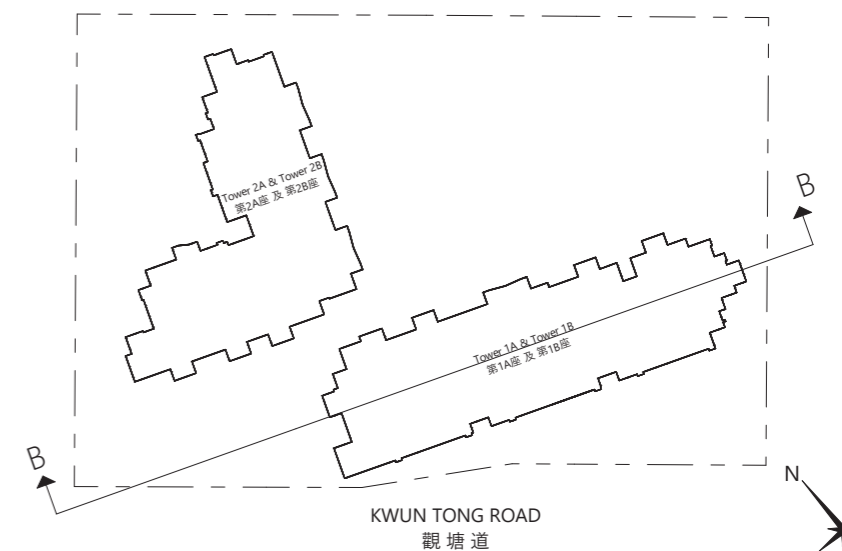
### Cross-Section Plan B-B 橫截面圖 B-B

The part of Emergency Vehicular Access/ Driveway adjacent to the building is 4.600 metres above the Hong Kong Principal Datum. 毗連建築物的一段緊急車輛通道/車道為香港主水平基準以上4.600米。

The part of Kwun Tong Road adjacent to the building is 4.800 to 4.830 meters above the Hong Kong Principal Datum. 毗連建築物的一段觀塘道為香港主水平基準以上4.800至4.830米。



### Key Plan 索引圖



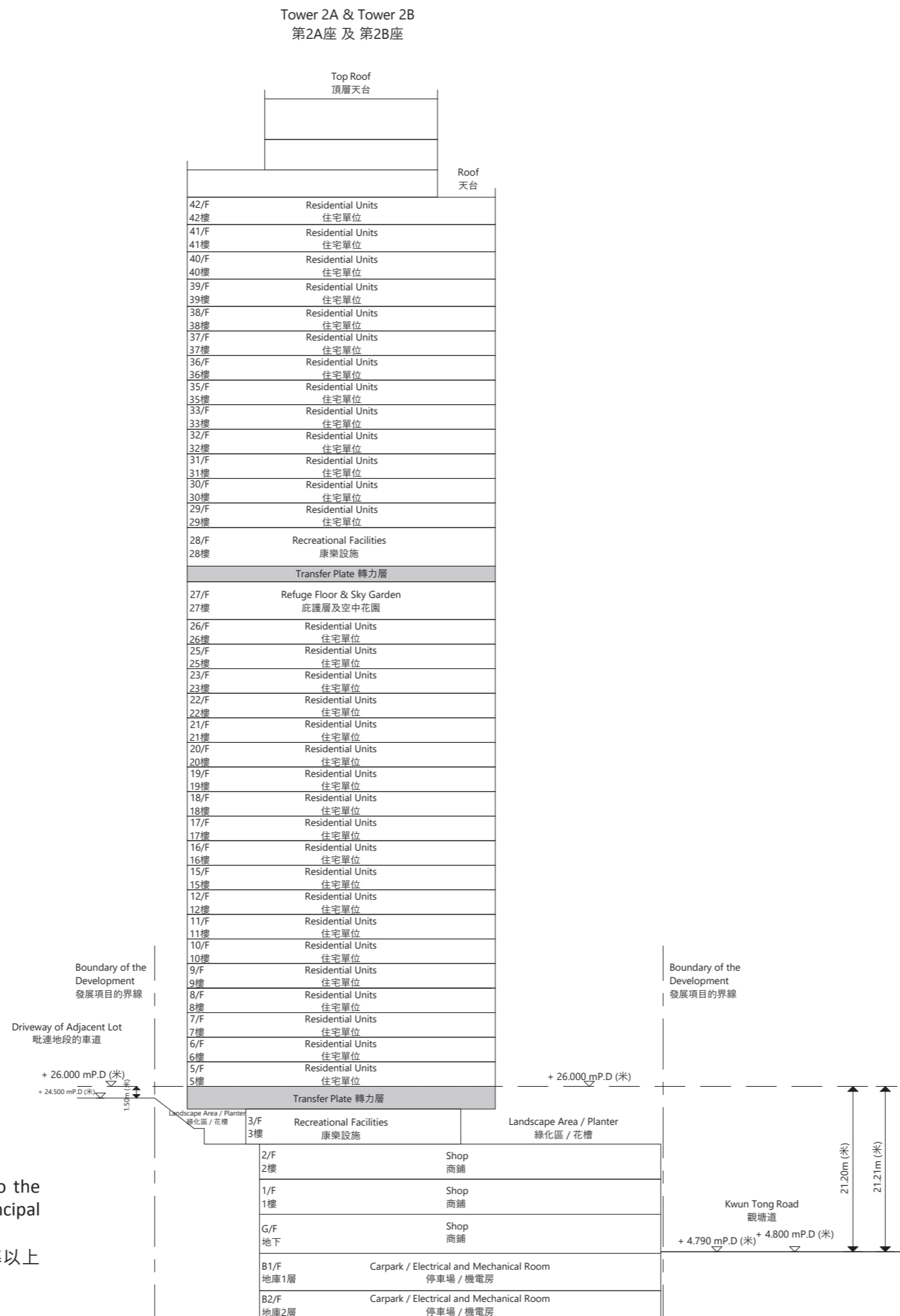
- Dotted line denotes the level of the lowest residential floor  
虛線代表最低住宅樓層水平
- EVA Denotes emergency vehicular access  
代表緊急車輛通道
- ▽ Denotes height above the Hong Kong Principal Datum (PD) (Metre)  
代表香港主水平基準以上高度(米)

Remark: This cross-section plan is not drawn to scale  
備註：此橫截面圖並非按照比例繪圖

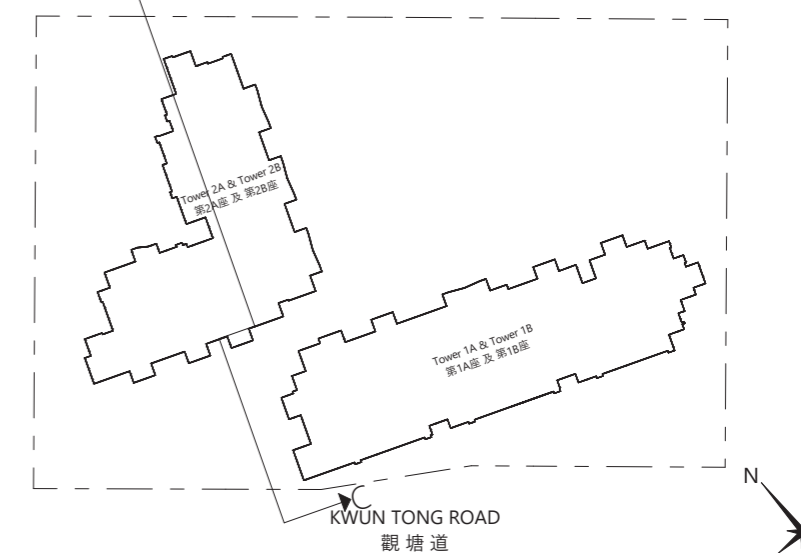
# Cross-section plan of building in the development

## 發展項目中的建築物的橫截面圖

Cross-Section Plan C-C  
橫截面圖 C-C



Key Plan  
索引圖



----- Dotted line denotes the level of the lowest residential floor  
虛線代表最低住宅樓層水平

▽ Denotes height above the Hong Kong Principal Datum (PD) (Metre)  
代表香港主水平基準以上高度(米)

Remark: This cross-section plan is not drawn to scale  
備註：此橫截面圖並非按照比例繪圖

The part of the Driveway of Adjacent Lot adjacent to the building is 24.500 meters above the Hong Kong Principal Datum.

毗連建築物的一段毗連地段的車道為香港主水平基準以上24.500米。

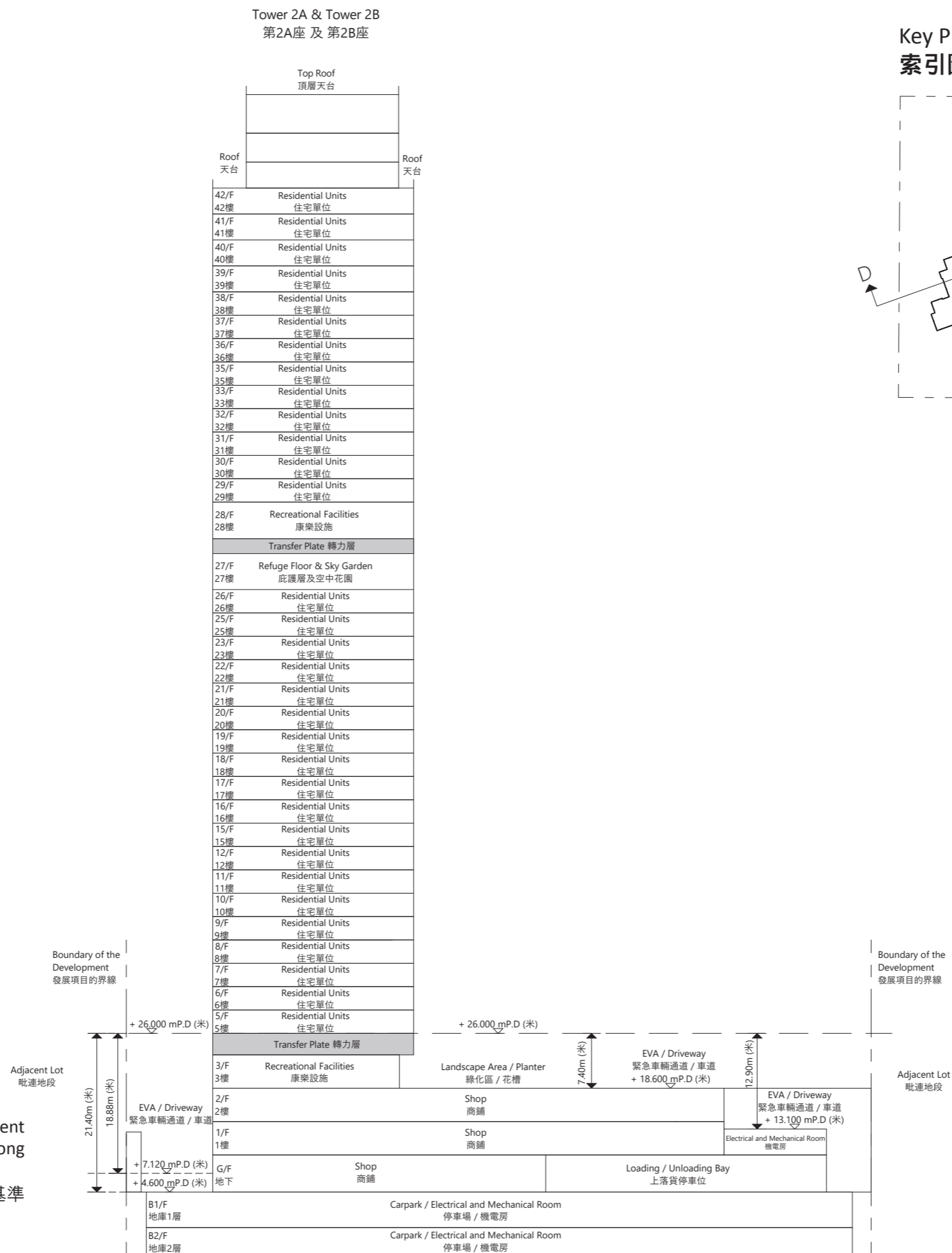
The part of Kwun Tong Road adjacent to the building is 4.790 to 4.800 metres above the Hong Kong Principal Datum.

毗連建築物的一段觀塘道為香港主水平基準以上4.790至4.800米。

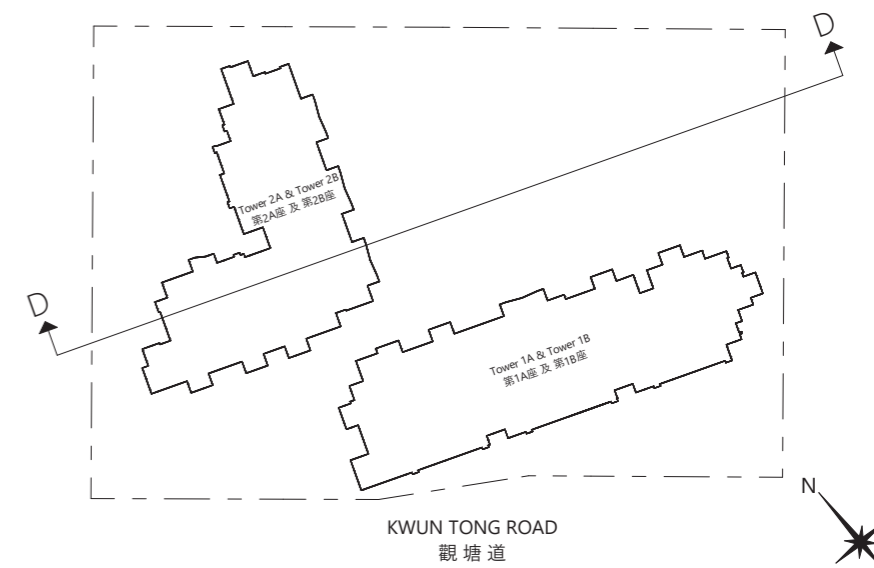
# Cross-section plan of building in the development

## 發展項目中的建築物的橫截面圖

Cross-Section Plan D-D  
橫截面圖 D-D



Key Plan  
索引圖



- Dotted line denotes the level of the lowest residential floor  
虛線代表最低住宅樓層水平
- EVA Denotes emergency vehicular access  
代表緊急車輛通道
- ▽ Denotes height above the Hong Kong Principal Datum (PD) (Metre)  
代表香港主水平基準以上高度(米)

Remark: This cross-section plan is not drawn to scale  
備註：此橫截面圖並非按照比例繪圖

The part of Emergency Vehicular Access/Driveway adjacent to the building is 4.600 to 7.120 metres above the Hong Kong Principal Datum.

毗連建築物的一段緊急車輛通道/車道為香港主水平基準以上4.600至7.120米。

The part of Emergency Vehicular Access/Driveway adjacent to the building is 13.100 to 18.600 metres above the Hong Kong Principal Datum.

毗連建築物的一段緊急車輛通道/車道為香港主水平基準以上13.100至18.600米。