

Floor plans of residential properties in the development

發展項目的住宅物業的樓面平面圖

Remarks:

- (1) The internal acoustic sliding panels shown on the floor plans in this section are based on the General Building Plans in respect of the Development as approved by the Building Authority on 5 January 2024 (the "GBP").
- (2) In respect of the floor plan for "12/F, 15/F-23/F & 25/F-26/F of Tower 2A" of the Development (see page A022 of the GBP), prospective purchasers are specifically reminded that the internal sliding panels of the following specified residential properties of the Development as shown on the said floor plan (which follow the GBP) are **NOT** required in the latest Noise Impact Assessment Report (Report Ref: R7024_V2.3, dated April 2023) in respect of the Development as approved by the District Lands Office/ Kowloon East of Lands Department on 16 June 2023 (the "NIAR") :-
 - (i) Bedroom 2, Flat D, 22/F, Tower 2A
 - (ii) Bedroom 2, Flat D, 23/F, Tower 2A
 - (iii) Bedroom 2, Flat D, 25/F, Tower 2A
 - (iv) Bedroom 2, Flat D, 26/F, Tower 2A
- (3) In respect of the floor plan for "30/F-33/F & 35/F-39/F of Tower 1B, Tower 2A & Tower 2B" of the Development (see page A026 of the GBP), prospective purchasers are specifically reminded that the internal sliding panels of the following specified residential properties of the Development as shown on the said floor plan (which follow the GBP) are **NOT** required in the NIAR :-
 - (i) Bedroom 1, Flat H, 30/F, Tower 1B
 - (ii) Master Bedroom, Flat A, 30/F, Tower 2A
 - (iii) Living / Dining Room, Flat F, 32/F, Tower 2B
 - (iv) Living / Dining Room, Flat F, 33/F, Tower 2B
 - (v) Living / Dining Room, Flat F, 35/F, Tower 2B
 - (vi) Living / Dining Room, Flat F, 36/F, Tower 2B
 - (vii) Living / Dining Room, Flat F, 37/F, Tower 2B
 - (viii) Living / Dining Room, Flat F, 38/F, Tower 2B
 - (ix) Living / Dining Room, Flat F, 39/F, Tower 2B

(The specified residential properties of the Development referred to in paragraphs (2) and (3) above are collectively referred to as the "Relevant Units".)

- (4) In light of the above reasons, the internal sliding panels of the Relevant Units as shown on the aforesaid floor plans (which do not form part of the noise mitigation measures required under the NIAR) will **NOT** be provided in the Relevant Units to be handed over to the purchasers upon completion.
- (5) Prospective purchasers are recommended to refer to (a) the GBP for the actual location and provision of the internal sliding panels of the specified residential properties (including the Relevant Units) and (b) the NIAR for the details of actual noise mitigation measures of the Development. Copy of the GBP and the NIAR are available for inspection upon request at the sales office. All noise mitigation measures are subject to the actual provisions upon completion in accordance with the requirements under the NIAR.

備註：

- (1) 在此章節內的樓面平面圖所示的內層隔音趟板乃根據建築事務監督於2024年1月5日批准的發展項目的建築圖則(「該圖則」)擬備。
- (2) 就發展項目「第2A座12樓、15樓至23樓及25樓至26樓的樓面平面圖」而言(見該圖則第A022頁), 準買方須特別注意, 根據地政總署九龍東區地政處於2023年6月16日最新經批准的發展項目的噪音影響評估報告(報告編號: R7024_V2.3, 2023年4月)(「噪音影響評估報告」), 下述發展項目的指明住宅物業在上述樓面平面圖(根據該圖則擬備)所示的內層隔音趟板**不需要**在噪音影響評估報告中提供 :-
 - (i) 第2A座22樓D單位的睡房2
 - (ii) 第2A座23樓D單位的睡房2
 - (iii) 第2A座25樓D單位的睡房2
 - (iv) 第2A座26樓D單位的睡房2
- (3) 就發展項目「第1B、2A及2B座30樓至33樓及35樓至39樓的樓面平面圖」而言(見該圖則第A026頁), 準買方須特別注意, 根據噪音影響評估報告, 下述發展項目指明住宅物業在上述樓面平面圖(根據該圖則擬備)所示的內層隔音趟板**不需要**在噪音影響評估報告中提供 :-
 - (i) 第1B座30樓H單位的睡房1
 - (ii) 第2A座30樓A單位的主人睡房
 - (iii) 第2B座32樓F單位的客/飯廳
 - (iv) 第2B座33樓F單位的客/飯廳
 - (v) 第2B座35樓F單位的客/飯廳
 - (vi) 第2B座36樓F單位的客/飯廳
 - (vii) 第2B座37樓F單位的客/飯廳
 - (viii) 第2B座38樓F單位的客/飯廳
 - (ix) 第2B座39樓F單位的客/飯廳

(於上述第(2)段及第(3)段所指的發展項目指明住宅物業統稱為「相關單位」。)

- (4) 基於上述原因, 於上述平面圖所顯示的相關單位的內層隔音趟板 (並不構成噪音影響評估報告內紓緩噪音措施的一部份) 並不會於完成交易時在相關單位內提供。
- (5) 建議準買方參閱 (a) 該圖則以了解在指明住宅物業(包括相關單位)的內層隔音趟板的實際位置及安裝詳情及 (b) 噪音影響評估報告以了解發展項目內實際紓緩噪音措施之詳情。該圖則及噪音影響評估報告的副本可在售樓處索取查閱。所有紓緩噪音措施以成交時按噪音影響評估報告內所要求的實際規定為準。

Floor plans of residential properties in the development

發展項目的住宅物業的樓面平面圖

Tower 1A & Tower 1B 5/F (4/F is omitted)
第1A座及第1B座 5樓 (不設4樓)

Description 描述	Tower 1A 第1A座						Tower 1B 第1B座							
	Flat 單位						Flat 單位							
	A	B	C	D	E	F	A	B	C	D	E	F	G	H
Floor-to-floor height (refers to the height between the top surface of the structural slab of a floor and the top surface of the structural slab of its immediate upper floor) of each residential property (m) 每個住宅物業的層與層之間的高度 (指該樓層之石屎地台面與上一層石屎地台面之高度距離) (米)	2.825				2.800		2.800				2.800			2.800
	2.900	2.800			2.900		2.900		2.800		2.800		2.800	2.900
	3.150	2.900	2.800		3.150		3.150		2.900		2.825		2.800	3.150
	3.325	3.150	3.150		3.325		3.325		3.150		2.900		3.150	3.325
	3.375				3.375		3.375				3.150			3.375
Thickness of the floor slabs (excluding plaster) of each residential property (mm) 每個住宅物業的樓板 (不包括灰泥) 的厚度 (毫米)	150				150		150		150	150	150		150	
	175		150		175		175		150	175			150	

The internal areas of the residential properties on the upper floors will generally be slightly larger than those on the lower floors because of the reducing thickness of the structural walls on the upper floors (Note: This statement as required under section 10(2)(e) of Part 1 of Schedule 1 to the Residential Properties (First-hand Sales) Ordinance is not applicable to the Development).

因住宅物業的較高樓層的結構牆的厚度遞減，較高樓層的內部面積，一般比較低樓層的內部面積稍大(備註：此《一手住宅物業銷售條例》附表1第1部第10(2)(e)條規定之陳述並不適用於發展項目)。

Remarks:

- The dimensions in the floor plans are all structural dimensions in millimetre and rounded off to the nearest integer.
- For details of the noise mitigation measures, please refer to the Relevant Information section in this sales brochure.
- Please refer to Page 62 of this sales brochure for legend of the terms and abbreviations shown in the floor plans.
- (~)(/)(')(")(*)#(^)(+) The floor-to-floor height (i.e. the height between the top surface of the structural slab of that floor and the top surface of the structured slab of its immediate upper floor) includes, without limitation, a height of sunken slab of 0.250m(~), 0.275m(/), 0.300m('), 0.325m("), 0.350m(*), 0.400m(#), 0.450m(^) and 0.550m(+), located partly on the structural slab of that floor or its immediate upper floor.

備註：

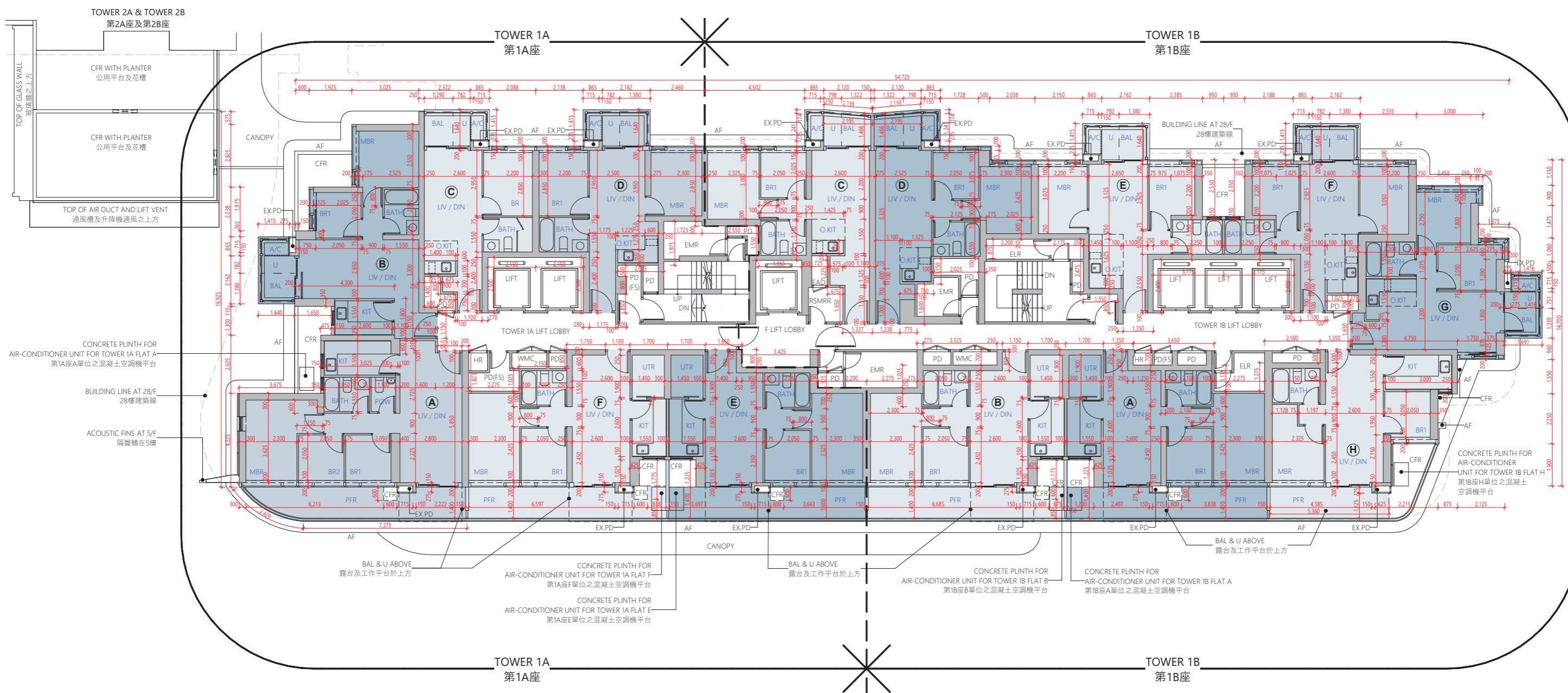
- 樓面平面圖所列數字為以毫米標示之建築結構尺寸，並以四捨五入至整數。
- 有關紓緩噪音措施之詳情，請參閱本售樓說明書的有關資料章節。
- 樓面平面圖中顯示之名詞及簡稱之圖例，請參閱本售樓說明書第62頁。
- (~)(/)(')(")(*)#(^)(+)層與層之間的高度(指該樓層之石屎地台面與上一層石屎地台面之高度距離)包括但不限於高度為0.250米(~)、0.275米(/)、0.300米(')、0.325米(")、0.350米(*)、0.400米(#)、0.450米(^)及0.550米(+)-之跌級樓板(該等跌級樓板有部分位於該樓層或上一層之石屎地台面)。

Floor plans of residential properties in the development

發展項目的住宅物業的樓面平面圖

Tower 1A & Tower 1B
第1A座及第1B座

5/F (4/F is omitted)
5樓 (不設4樓)



Scale 比例

0 2 10m (米)

Floor plans of residential properties in the development

發展項目的住宅物業的樓面平面圖

Tower 1A & Tower 1B 6/F-12/F, 15/F-23/F & 25/F-26/F (13/F, 14/F & 24/F are omitted)
 第1A座及第1B座 6樓至12樓、15樓至23樓及25樓至26樓 (不設13樓、14樓及24樓)

Description 描述		Tower 1A 第1A座						Tower 1B 第1B座							
		Flat 單位						Flat 單位							
		A	B	C	D	E	F	A	B	C	D	E	F	G	H
Floor-to-floor height (refers to the height between the top surface of the structural slab of a floor and the top surface of the structural slab of its immediate upper floor) of each residential property (m) 每個住宅物業的層與層之間的高度 (指該樓層之石屎地台面與上一層石屎地台面之高度距離) (米)	6/F-12/F, 15/F-23/F & 25/F 6樓至12樓、15樓至23樓及25樓	3.150 3.150~ 3.150"	3.150 3.150*			3.150 3.150~ 3.150*			3.150 3.150~ 3.150*				3.150 3.150~ 3.150"	3.150 3.150*	3.150 3.150~ 3.150*
Thickness of the floor slabs (excluding plaster) of each residential property (mm) 每個住宅物業的樓板 (不包括灰泥) 的厚度 (毫米)		150 175	150			150 175			150 175		150	150 175		150	
Floor-to-floor height (refers to the height between the top surface of the structural slab of a floor and the top surface of the structural slab of its immediate upper floor) of each residential property (m) 每個住宅物業的層與層之間的高度 (指該樓層之石屎地台面與上一層石屎地台面之高度距離) (米)	26/F 26樓	3.050 3.150 3.400~ 3.475"	3.150 3.275 3.325 3.500*	2.950 3.150 3.500*		3.050 3.150 3.400~ 3.500*			3.050 3.150 3.400~ 3.500*		2.950 3.150 3.500*		2.950 3.150 3.400~ 3.475" 3.500*	2.950 3.150 3.500*	3.050 3.150 3.400~ 3.500*
Thickness of the floor slabs (excluding plaster) of each residential property (mm) 每個住宅物業的樓板 (不包括灰泥) 的厚度 (毫米)		150 175	150			150 175			150 175		150	150 175		150	

The internal areas of the residential properties on the upper floors will generally be slightly larger than those on the lower floors because of the reducing thickness of the structural walls on the upper floors (Note: This statement as required under section 10(2)(e) of Part 1 of Schedule 1 to the Residential Properties (First-hand Sales) Ordinance is not applicable to the Development).

因住宅物業的較高樓層的結構牆的厚度遞減，較高樓層的內部面積，一般比較低樓層的內部面積稍大(備註：此《一手住宅物業銷售條例》附表1第1部第10(2)(e)條規定之陳述並不適用於發展項目)。

Remarks:

- The dimensions in the floor plans are all structural dimensions in millimetre and rounded off to the nearest integer.
- For details of the noise mitigation measures, please refer to the Relevant Information section in this sales brochure.
- Please refer to Page 62 of this sales brochure for legend of the terms and abbreviations shown in the floor plans.
- (~)/(/)(')(*)(#)(^)(+) The floor-to-floor height (i.e. the height between the top surface of the structural slab of that floor and the top surface of the structured slab of its immediate upper floor) includes, without limitation, a height of sunken slab of 0.250m(~), 0.275m(/), 0.300m('), 0.325m("), 0.350m(*), 0.400m(#), 0.450m(^) and 0.550m(+), located partly on the structural slab of that floor or its immediate upper floor.

備註：

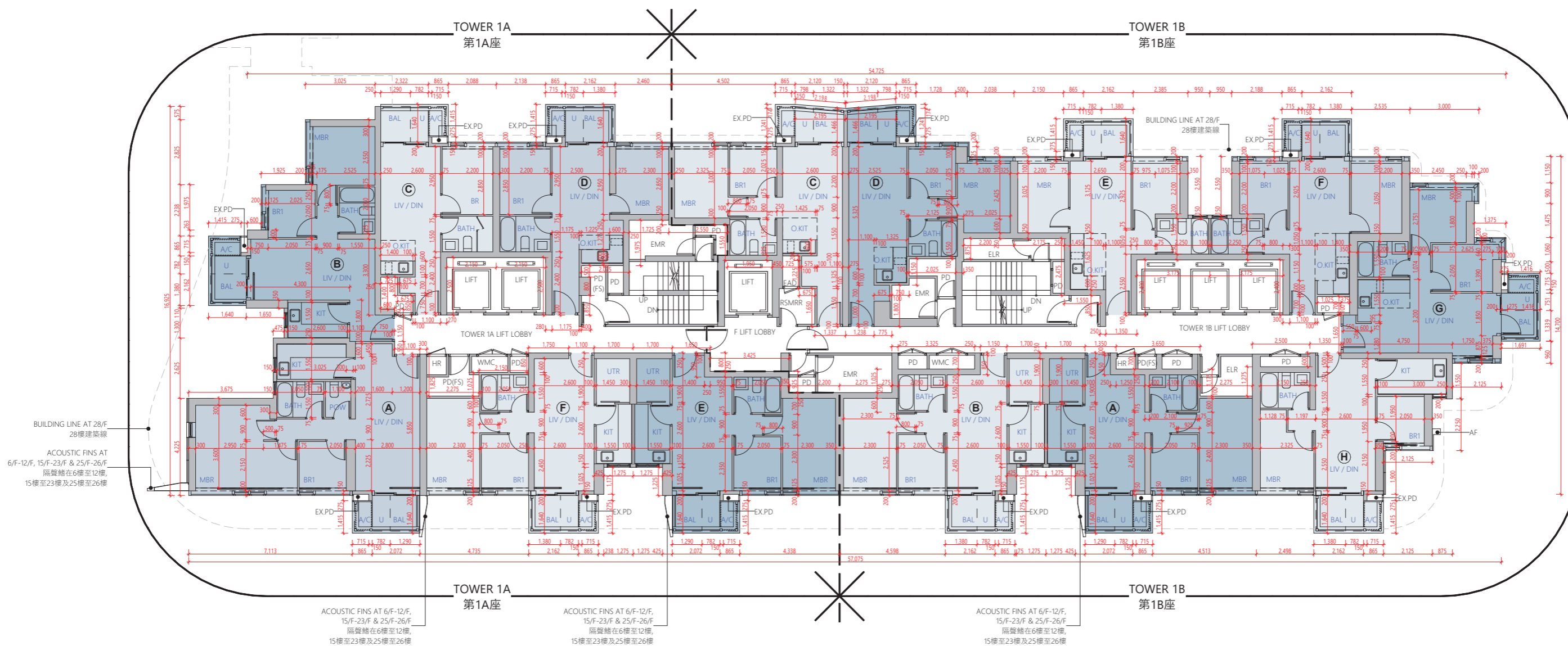
- 樓面平面圖所列數字為以毫米標示之建築結構尺寸，並以四捨五入至整數。
- 有關紓緩噪音措施之詳情，請參閱本售樓說明書的有關資料章節。
- 樓面平面圖中顯示之名詞及簡稱之圖例，請參閱本售樓說明書第62頁。
- (~)/(/)(')(*)(#)(^)(+)層與層之間的高度(指該樓層之石屎地台面與上一層石屎地台面之高度距離)包括但不限於高度為0.250米(~)、0.275米(/)、0.300米(')、0.325米(")、0.350米(*)、0.400米(#)、0.450米(^)及0.550米(+)-之跌級樓板(該等跌級樓板有部分位於該樓層或上一層之石屎地台面)。

Floor plans of residential properties in the development

發展項目的住宅物業的樓面平面圖

Tower 1A & Tower 1B
第1A座及第1B座

6/F-12/F, 15/F-23/F & 25/F-26/F (13/F, 14/F & 24/F are omitted)
6樓至12樓、15樓至23樓及25樓至26樓 (不設13樓、14樓及24樓)



Scale 比例



Floor plans of residential properties in the development

發展項目的住宅物業的樓面平面圖

Tower 1A & Tower 1B 29/F
第1A座及第1B座 29樓

Description 描述	Tower 1A 第1A座					Tower 1B 第1B座								
	Flat 單位					Flat 單位								
	A	B	C	D	E	A	B	C	D	E	F	G	H	
Floor-to-floor height (refers to the height between the top surface of the structural slab of a floor and the top surface of the structural slab of its immediate upper floor) of each residential property (m) 每個住宅物業的層與層之間的高度 (指該樓層之石屎地台面與上一層石屎地台面之高度距離) (米)	3.150 3.150` 3.150* 3.150~ 3.225 3.275	3.150 3.150* 3.225 3.275	3.150 3.150* 3.500*		3.150 3.150` 3.150* 3.150~ 3.225 3.275	3.150 3.150` 3.150~ 3.150* 3.225 3.275		3.150 3.150~ 3.150* 3.150~ 3.150*		3.150 3.150~ 3.150* 3.150~ 3.500*	3.150 3.150~ 3.150* 3.150~ 3.400~ 3.500*	2.800 3.150 3.150*		3.150 3.150~ 3.150* 3.225 3.275
Thickness of the floor slabs (excluding plaster) of each residential property (mm) 每個住宅物業的樓板 (不包括灰泥) 的厚度 (毫米)	150 175		150		150 175	150 175		150	150 175	150		150 175	150	

The internal areas of the residential properties on the upper floors will generally be slightly larger than those on the lower floors because of the reducing thickness of the structural walls on the upper floors (Note: This statement as required under section 10(2)(e) of Part 1 of Schedule 1 to the Residential Properties (First-hand Sales) Ordinance is not applicable to the Development).

因住宅物業的較高樓層的結構牆的厚度遞減，較高樓層的內部面積，一般比較低樓層的內部面積稍大(備註：此《一手住宅物業銷售條例》附表1第1部第10(2)(e)條規定之陳述並不適用於發展項目)。

Remarks:

- The dimensions in the floor plans are all structural dimensions in millimetre and rounded off to the nearest integer.
- For details of the noise mitigation measures, please refer to the Relevant Information section in this sales brochure.
- Please refer to Page 62 of this sales brochure for legend of the terms and abbreviations shown in the floor plans.
- (~)(/)(')(*)(#)(^)(+) The floor-to-floor height (i.e. the height between the top surface of the structural slab of that floor and the top surface of the structured slab of its immediate upper floor) includes, without limitation, a height of sunken slab of 0.250m(~), 0.275m(/), 0.300m('), 0.325m("), 0.350m(*), 0.400m(#), 0.450m(^) and 0.550m(+), located partly on the structural slab of that floor or its immediate upper floor.

備註：

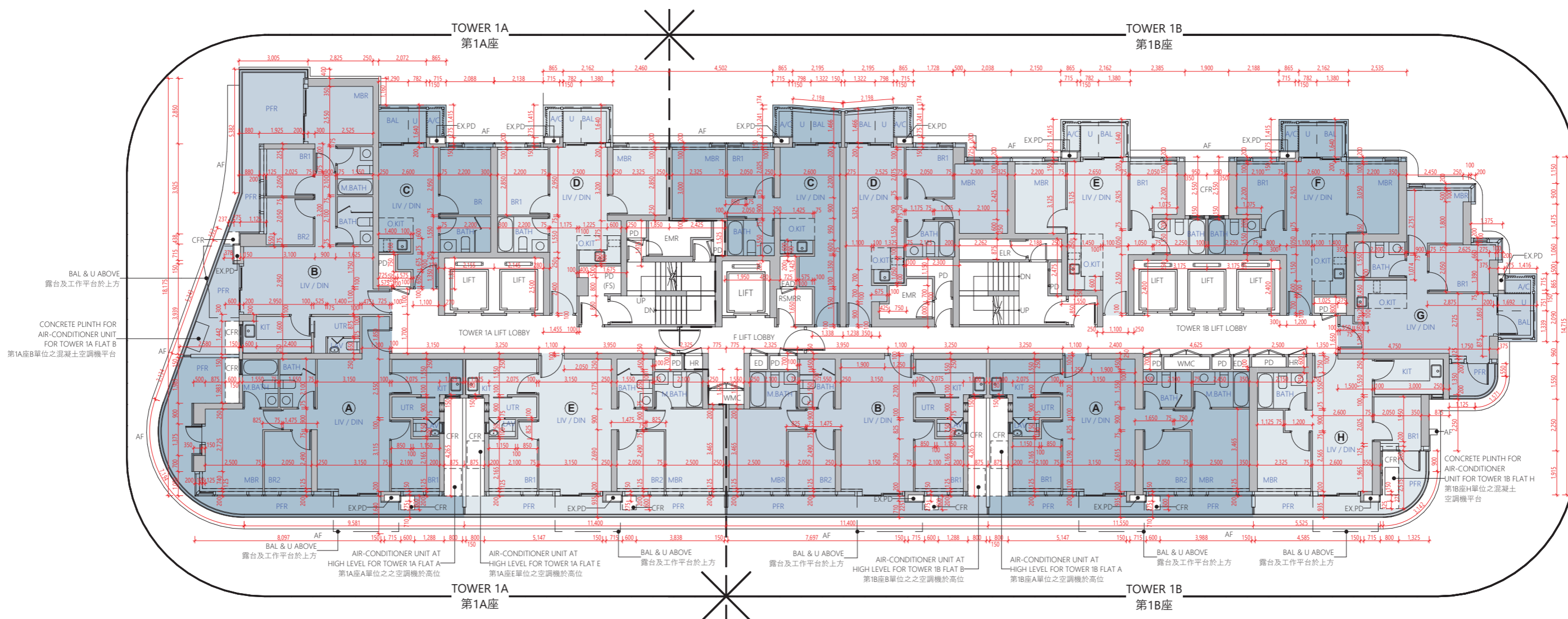
- 樓面平面圖所列數字為以毫米標示之建築結構尺寸，並以四捨五入至整數。
- 有關紓緩噪音措施之詳情，請參閱本售樓說明書的有關資料章節。
- 樓面平面圖中顯示之名詞及簡稱之圖例，請參閱本售樓說明書第62頁。
- (~)(/)(')(*)(#)(^)(+)層與層之間的高度(指該樓層之石屎地台面與上一層石屎地台面之高度距離)包括但不限於高度為0.250米(~)、0.275米(/)、0.300米(')、0.325米(")、0.350米(*)、0.400米(#)、0.450米(^)及0.550米(+)-之跌級樓板(該等跌級樓板有部分位於該樓層或上一層之石屎地台面)。

Floor plans of residential properties in the development

發展項目的住宅物業的樓面平面圖

Tower 1A & Tower 1B
第1A座及第1B座

29/F
29樓



Floor plans of residential properties in the development

發展項目的住宅物業的樓面平面圖

Tower 1A & Tower 1B 30/F-33/F & 35/F-39/F (34/F is omitted)
 第1A座及第1B座 30樓至33樓及35樓至39樓 (不設34樓)

Description 描述	Floor 樓層	Tower 1A 第1A座					Tower 1B 第1B座								
		Flat 單位					Flat 單位								
		A	B	C	D	E	A	B	C	D	E	F	G	H	
Floor-to-floor height (refers to the height between the top surface of the structural slab of a floor and the top surface of the structural slab of its immediate upper floor) of each residential property (m) 每個住宅物業的層與層之間的高度 (指該樓層之石屎地台面與上一層石屎地台面之高度距離) (米)	30/F-33/F & 35/F-38/F 30樓至33樓及35樓至38樓	3.150	3.150			3.150	3.150		3.150		3.150		3.150	3.150	
3.150~ 3.150* 3.150`		3.150* 3.150`			3.150~ 3.150* 3.150`	3.150~ 3.150* 3.150`		3.150 3.150~ 3.150*		3.150 3.150~ 3.150"		3.150 3.150* 3.150`	3.150 3.150~ 3.150*		
Thickness of the floor slabs (excluding plaster) of each residential property (mm) 每個住宅物業的樓板 (不包括灰泥) 的厚度 (毫米)		150 175		150		150 175	150 175		150	150 175	150		150 175	150	
Floor-to-floor height (refers to the height between the top surface of the structural slab of a floor and the top surface of the structural slab of its immediate upper floor) of each residential property (m) 每個住宅物業的層與層之間的高度 (指該樓層之石屎地台面與上一層石屎地台面之高度距離) (米)	39/F 39樓	3.150	3.400* 3.450 3.500 3.750~ 3.800` 3.850*	3.100 3.150 3.450 3.450* 3.500 3.850*	2.950 3.050 3.100 3.150 3.300* 3.400* 3.450 3.450* 3.500 3.750~ 3.800` 3.850*	3.100 3.150 3.400~ 3.450 3.500 3.750~ 3.800` 3.850*	3.450 3.500 3.750~ 3.800` 3.850*	3.100 3.150 3.450* 3.450` 3.500 3.750~ 3.800` 3.850*	3.150 3.150 3.450 3.500 3.750~ 3.850*	3.100 3.150 3.350~ 3.400~ 3.450 3.500 3.750~ 3.850*	3.050 3.100 3.150 3.400~ 3.450 3.500 3.825" 3.850*	3.100 3.150 3.350~ 3.425" 3.450 3.500 3.825" 3.850*	3.100 3.150 3.350~ 3.425" 3.450 3.500 3.825" 3.850*	3.100 3.150 3.350~ 3.425" 3.450 3.500 3.825" 3.850*	3.100 3.150 3.350~ 3.425" 3.450 3.500 3.825" 3.850*
3.400~ 3.450 3.500 3.750~ 3.800` 3.850*		150 175													

The internal areas of the residential properties on the upper floors will generally be slightly larger than those on the lower floors because of the reducing thickness of the structural walls on the upper floors (Note: This statement as required under section 10(2)(e) of Part 1 of Schedule 1 to the Residential Properties (First-hand Sales) Ordinance is not applicable to the Development).

因住宅物業的較高樓層的結構牆的厚度遞減，較高樓層的內部面積，一般比較低樓層的內部面積稍大(備註：此《一手住宅物業銷售條例》附表1第1部第10(2)(e)條規定之陳述並不適用於發展項目)。

Remarks:

- The dimensions in the floor plans are all structural dimensions in millimetre and rounded off to the nearest integer.
- For details of the noise mitigation measures, please refer to the Relevant Information section in this sales brochure.
- Please refer to page 27 of this sales brochure for the internal acoustic sliding panels shown on the floor plan.
- Please refer to Page 62 of this sales brochure for legend of the terms and abbreviations shown in the floor plans.
- (~)/(/)(')(")(*)(#)(^)(+) The floor-to-floor height (i.e. the height between the top surface of the structural slab of that floor and the top surface of the structured slab of its immediate upper floor) includes, without limitation, a height of sunken slab of 0.250m(~), 0.275m(/), 0.300m('), 0.325m("), 0.350m(*), 0.400m(#), 0.450m(^) and 0.550m(+) located partly on the structural slab of that floor or its immediate upper floor.

備註：

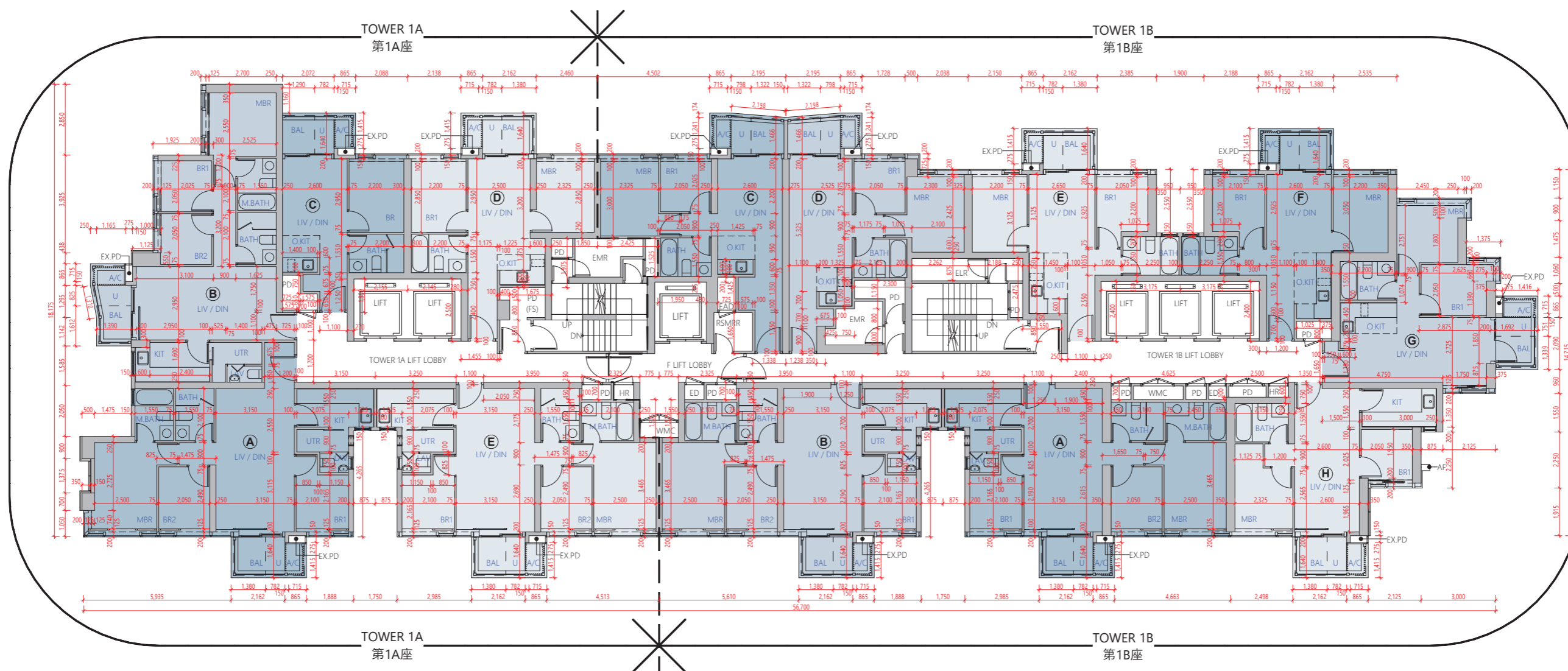
- 樓面平面圖所列數字為以毫米標示之建築結構尺寸，並以四捨五入至整數。
- 有關紓緩噪音措施之詳情，請參閱本售樓說明書的有關資料章節。
- 樓面平面圖中顯示之內層隔音趟板，請參閱本售樓說明書第27頁。
- 樓面平面圖中顯示之名詞及簡稱之圖例，請參閱本售樓說明書第62頁。
- (~)/(/)(')(")(*)(#)(^)(+)層與層之間的高度(指該樓層之石屎地台面與上一層石屎地台面之高度距離)包括但不限於高度為0.250米(~)、0.275米(/)、0.300米(')、0.325米(")、0.350米(*)、0.400米(#)、0.450米(^)及0.550米(+)-之跌級樓板(該等跌級樓板有部分位於該樓層或上一層之石屎地台面)。

Floor plans of residential properties in the development

發展項目的住宅物業的樓面平面圖

Tower 1A & Tower 1B
第1A座及第1B座

30/F-33/F & 35/F-39/F (34/F is omitted)
30樓至33樓及35樓至39樓 (不設34樓)



Floor plans of residential properties in the development

發展項目的住宅物業的樓面平面圖

Tower 1A & Tower 1B 40/F
第1A座及第1B座 40樓

Description 描述	Tower 1A 第1A座			Tower 1B 第1B座		
	Flat 單位			Flat 單位		
	A	B	C	A	B	C
Floor-to-floor height (refers to the height between the top surface of the structural slab of a floor and the top surface of the structural slab of its immediate upper floor) of each residential property (m) 每個住宅物業的層與層之間的高度 (指該樓層之石屎地台面與上一層石屎地台面之高度距離) (米)	3.100		3.050			3.050
	3.150	3.100	3.150		3.400^	3.100
	3.500	3.150	3.500		3.450#	3.150
	3.500*	3.450*	3.500*	3.150	3.500	3.325
	3.500#	3.500	3.500#	3.500	3.500*	3.450*
	3.550#	3.500*	3.500^	3.850*	3.500+	3.450#
	3.850*	3.500#	3.550#	3.900#	3.550#	3.500
	3.900#	3.850*	3.850*		3.850*	3.500#
	3.950^	3.900#	3.950^		3.900#	3.500*
			4.050+			3.550#
					3.850*	
					3.900#	
Thickness of the floor slabs (excluding plaster) of each residential property (mm) 每個住宅物業的樓板 (不包括灰泥) 的厚度 (毫米)	150		150	150		
	175			175		150

The internal areas of the residential properties on the upper floors will generally be slightly larger than those on the lower floors because of the reducing thickness of the structural walls on the upper floors (Note: This statement as required under section 10(2)(e) of Part 1 of Schedule 1 to the Residential Properties (First-hand Sales) Ordinance is not applicable to the Development).

因住宅物業的較高樓層的結構牆的厚度遞減，較高樓層的內部面積，一般比較低樓層的內部面積稍大(備註：此《一手住宅物業銷售條例》附表1第1部第10(2)(e)條規定之陳述並不適用於發展項目)。

Remarks:

- The dimensions in the floor plans are all structural dimensions in millimetre and rounded off to the nearest integer.
- For details of the noise mitigation measures, please refer to the Relevant Information section in this sales brochure.
- Please refer to Page 62 of this sales brochure for legend of the terms and abbreviations shown in the floor plans.
- (~)(/)(^)(*)(#)(^)(+) The floor-to-floor height (i.e. the height between the top surface of the structural slab of that floor and the top surface of the structured slab of its immediate upper floor) includes, without limitation, a height of sunken slab of 0.250m(~), 0.275m(/), 0.300m(^), 0.325m("), 0.350(*), 0.400m(#), 0.450m(^) and 0.550m(+), located partly on the structural slab of that floor or its immediate upper floor.

備註：

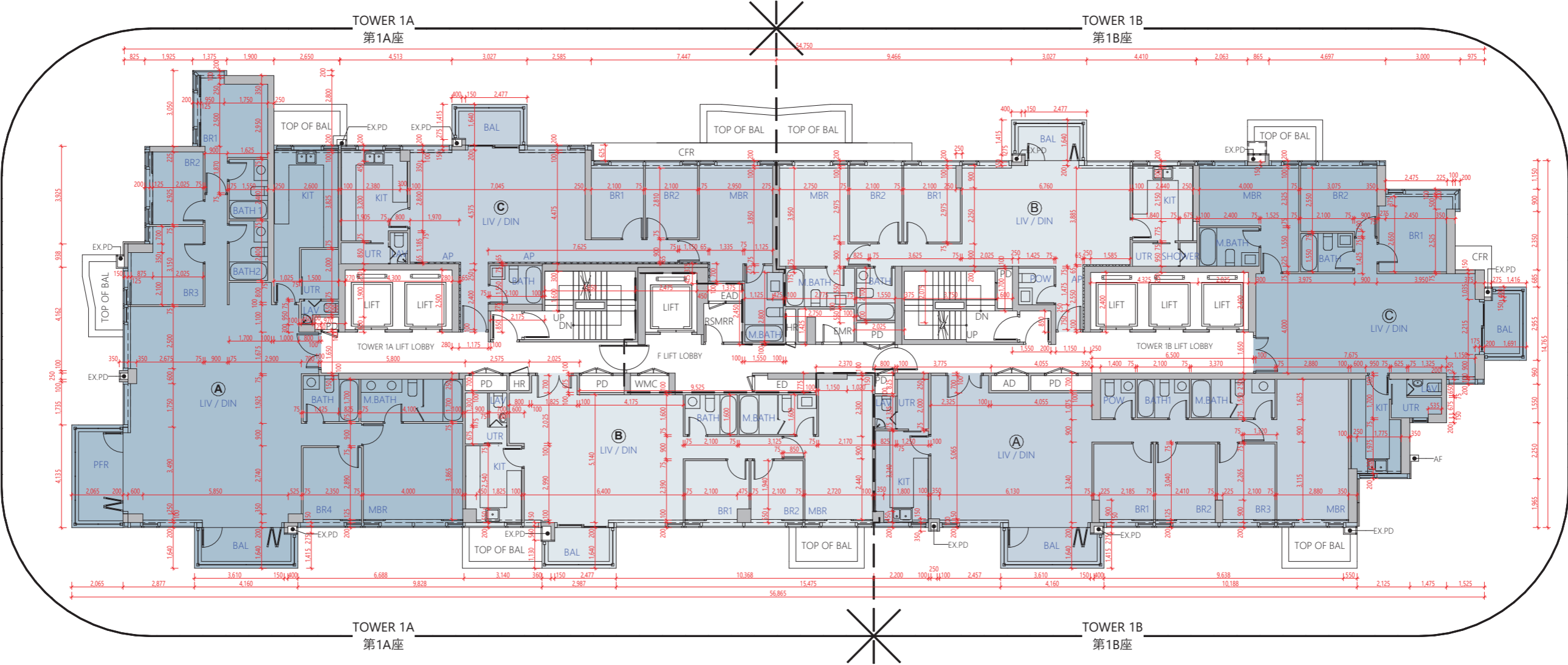
- 樓面平面圖所列數字為以毫米標示之建築結構尺寸，並以四捨五入至整數。
- 有關紓緩噪音措施之詳情，請參閱本售樓說明書的有關資料章節。
- 樓面平面圖中顯示之名詞及簡稱之圖例，請參閱本售樓說明書第62頁。
- (~)(/)(^)(*)(#)(^)(+)層與層之間的高度(指該樓層之石屎地台面與上一層石屎地台面之高度距離)包括但不限於高度為0.250米(~)、0.275米(/)、0.300米(^)、0.325米(")、0.350米(*)、0.400米(#)、0.450米(^)及0.550米(+)-之跌級樓板(該等跌級樓板有部分位於該樓層或上一層之石屎地台面)。

Floor plans of residential properties in the development

發展項目的住宅物業的樓面平面圖

Tower 1A & Tower 1B
第1A座及第1B座

40/F
40樓



Floor plans of residential properties in the development

發展項目的住宅物業的樓面平面圖

Tower 1A & Tower 1B 41/F
第1A座及第1B座 41樓

Description 描述	Tower 1A 第1A座			Tower 1B 第1B座	
	Flat 單位			Flat 單位	
	A-DP	B	C	A-DP	B
Floor-to-floor height (refers to the height between the top surface of the structural slab of a floor and the top surface of the structural slab of its immediate upper floor) of each residential property (m) 每個住宅物業的層與層之間的高度 (指該樓層之石屎地台面與上一層石屎地台面之高度距離) (米)	3.050		3.050		2.950
	3.150		3.150	3.100	3.100
	3.325	3.150	3.250	3.150	3.150
	3.400*	3.500	3.400*	3.500	3.500
	3.500	3.500*	3.450#	3.500*	3.500*
	3.550#	3.500#	3.500	3.550#	3.500^
	3.850*	3.550#	3.500*	3.850*	3.500+
	3.900#	3.850*	3.500^	3.900#	3.500#
		3.850*			3.850*
		3.950^			3.900#
Thickness of the floor slabs (excluding plaster) of each residential property (mm) 每個住宅物業的樓板 (不包括灰泥) 的厚度 (毫米)	150		150	150	150
	175		175	175	175

The internal areas of the residential properties on the upper floors will generally be slightly larger than those on the lower floors because of the reducing thickness of the structural walls on the upper floors (Note: This statement as required under section 10(2)(e) of Part 1 of Schedule 1 to the Residential Properties (First-hand Sales) Ordinance is not applicable to the Development).

因住宅物業的較高樓層的結構牆的厚度遞減，較高樓層的內部面積，一般比較低樓層的內部面積稍大(備註：此《一手住宅物業銷售條例》附表1第1部第10(2)(e)條規定之陳述並不適用於發展項目)。

Remarks:

- The dimensions in the floor plans are all structural dimensions in millimetre and rounded off to the nearest integer.
- For details of the noise mitigation measures, please refer to the Relevant Information section in this sales brochure.
- Please refer to Page 62 of this sales brochure for legend of the terms and abbreviations shown in the floor plans.
- The residential properties shown on this floor plan are treated as investment properties, and are not intended for sale by the Vendor.
- (~)/(/)(')(*)(#)(^)(+) The floor-to-floor height (i.e. the height between the top surface of the structural slab of that floor and the top surface of the structured slab of its immediate upper floor) includes, without limitation, a height of sunken slab of 0.250m(~), 0.275m(/), 0.300m('), 0.325m("), 0.350m(*), 0.400m(#), 0.450m(^) and 0.550m(+), located partly on the structural slab of that floor or its immediate upper floor.

備註：

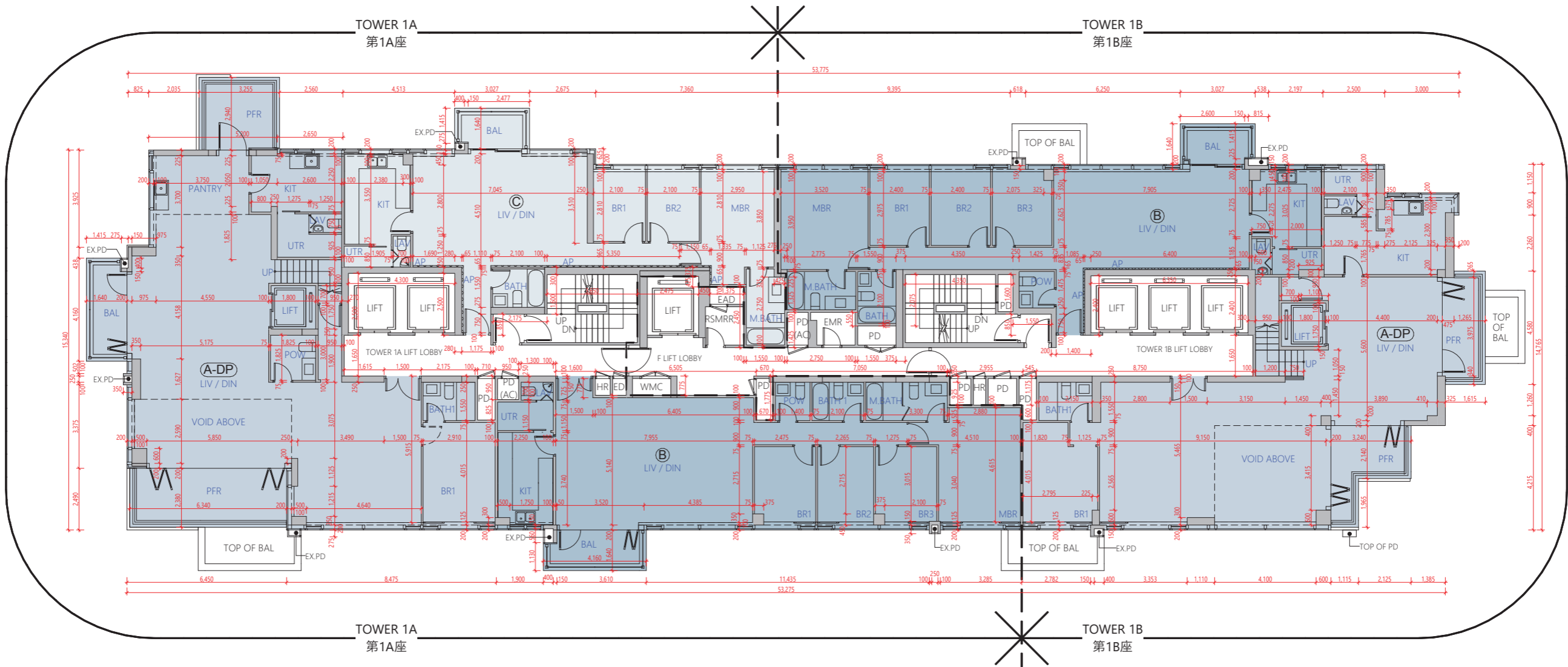
- 樓面平面圖所列數字為以毫米標示之建築結構尺寸，並以四捨五入至整數。
- 有關紓緩噪音措施之詳情，請參閱本售樓說明書的有關資料章節。
- 樓面平面圖中顯示之名詞及簡稱之圖例，請參閱本售樓說明書第62頁。
- 賣方將此樓面平面圖所載之住宅物業視為投資物業，並不打算提供出售。
- (~)/(/)(')(*)(#)(^)(+)層與層之間的高度(指該樓層之石屎地台面與上一層石屎地台面之高度距離)包括但不限於高度為0.250米(~)、0.275米(/)、0.300米(')、0.325米(")、0.350米(*)、0.400米(#)、0.450米(^)及0.550米(+)-之跌級樓板(該等跌級樓板有部分位於該樓層或上一層之石屎地台面)。

Floor plans of residential properties in the development

發展項目的住宅物業的樓面平面圖

Tower 1A & Tower 1B
第1A座及第1B座

41/F
41樓



Remark:
The residential properties shown on this floor plan are treated as investment properties, and are not intended for sale by the Vendor.

備註：
賣方將此樓面平面圖所載之住宅物業視為投資物業，並不打算提供出售。



Floor plans of residential properties in the development

發展項目的住宅物業的樓面平面圖

Tower 1A & Tower 1B 42/F
第1A座及第1B座 42樓

Description 描述	Tower 1A 第1A座			Tower 1B 第1B座	
	Flat 單位			Flat 單位	
	A-DP	A	B	A-DP	A
Floor-to-floor height (refers to the height between the top surface of the structural slab of a floor and the top surface of the structural slab of its immediate upper floor) of each residential property (m) 每個住宅物業的層與層之間的高度 (指該樓層之石屎地台面與上一層石屎地台面之高度距離) (米)	3.150 3.500 3.850* 3.950^	3.500 3.850* 3.900#	3.500 3.750~ 3.850* 3.950^	3.150 3.500 3.500* 3.550# 3.850* 3.900#	3.500 3.850* 4.050+
Thickness of the floor slabs (excluding plaster) of each residential property (mm) 每個住宅物業的樓板 (不包括灰泥) 的厚度 (毫米)	150 175		150	150 300	150

The internal areas of the residential properties on the upper floors will generally be slightly larger than those on the lower floors because of the reducing thickness of the structural walls on the upper floors (Note: This statement as required under section 10(2)(e) of Part 1 of Schedule 1 to the Residential Properties (First-hand Sales) Ordinance is not applicable to the Development).

因住宅物業的較高樓層的結構牆的厚度遞減，較高樓層的內部面積，一般比較低樓層的內部面積稍大(備註：此《一手住宅物業銷售條例》附表1第1部第10(2)(e)條規定之陳述並不適用於發展項目)。

Remarks:

- The dimensions in the floor plans are all structural dimensions in millimetre and rounded off to the nearest integer.
- For details of the noise mitigation measures, please refer to the Relevant Information section in this sales brochure.
- Please refer to Page 62 of this sales brochure for legend of the terms and abbreviations shown in the floor plans.
- The residential properties shown on this floor plan are treated as investment properties, and are not intended for sale by the Vendor.
- (~)(/)(')(")(*)(#)(^)(+) The floor-to-floor height (i.e. the height between the top surface of the structural slab of that floor and the top surface of the structured slab of its immediate upper floor) includes, without limitation, a height of sunken slab of 0.250m(~), 0.275m(/), 0.300m('), 0.325m("), 0.350m(*), 0.400m(#), 0.450m(^) and 0.550m(+), located partly on the structural slab of that floor or its immediate upper floor.

備註：

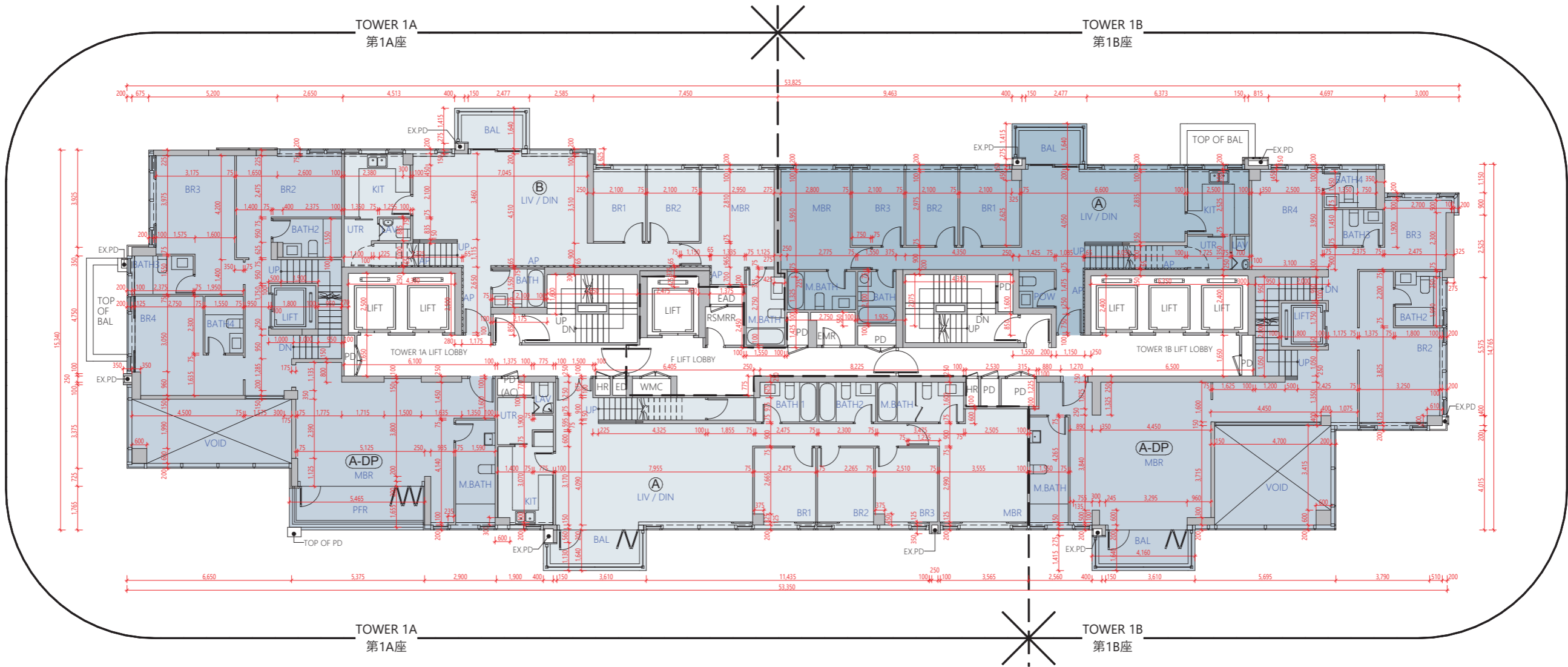
- 樓面平面圖所列數字為以毫米標示之建築結構尺寸，並以四捨五入至整數。
- 有關舒緩噪音措施之詳情，請參閱本售樓說明書的有關資料章節。
- 樓面平面圖中顯示之名詞及簡稱之圖例，請參閱本售樓說明書第62頁。
- 賣方將此樓面平面圖所載之住宅物業視為投資物業，並不打算提供出售。
- (~)(/)(')(")(*)(#)(^)(+)層與層之間的高度(指該樓層之石屎地台面與上一層石屎地台面之高度距離)包括但不限於高度為0.250米(~)、0.275米(/)、0.300米(')、0.325米(")、0.350米(*)、0.400米(#)、0.450米(^)及0.550米(+)-之跌級樓板(該等跌級樓板有部分位於該樓層或上一層之石屎地台面)。

Floor plans of residential properties in the development

發展項目的住宅物業的樓面平面圖

Tower 1A & Tower 1B
第1A座及第1B座

42/F
42樓



Remark:
The residential properties shown on this floor plan are treated as investment properties, and are not intended for sale by the Vendor.

備註：
賣方將此樓面平面圖所載之住宅物業視為投資物業，並不打算提供出售。



Floor plans of residential properties in the development

發展項目的住宅物業的樓面平面圖

Tower 1A & Tower 1B
第1A座及第1B座

Roof
天台

Description 描述	Tower 1A 第1A座			Tower 1B 第1B座	
	Flat 單位			Flat 單位	
	A-DP	A	B	A-DP	A
Floor-to-floor height (refers to the height between the top surface of the structural slab of a floor and the top surface of the structural slab of its immediate upper floor) of each residential property (m) 每個住宅物業的層與層之間的高度 (指該樓層之石屎地台面與上一層石屎地台面之高度距離) (米)	2.900	Not Applicable 不適用		2.900	Not Applicable 不適用
Thickness of the floor slabs (excluding plaster) of each residential property (mm) 每個住宅物業的樓板 (不包括灰泥) 的厚度 (毫米)	150	Not Applicable 不適用		150	Not Applicable 不適用

The internal areas of the residential properties on the upper floors will generally be slightly larger than those on the lower floors because of the reducing thickness of the structural walls on the upper floors (Note: This statement as required under section 10(2)(e) of Part 1 of Schedule 1 to the Residential Properties (First-hand Sales) Ordinance is not applicable to the Development).

因住宅物業的較高樓層的結構牆的厚度遞減，較高樓層的內部面積，一般比較低樓層的內部面積稍大(備註：此《一手住宅物業銷售條例》附表1第1部第10(2)(e)條規定之陳述並不適用於發展項目)。

Remarks:

- The dimensions in the floor plans are all structural dimensions in millimetre and rounded off to the nearest integer.
- For details of the noise mitigation measures, please refer to the Relevant Information section in this sales brochure.
- Please refer to Page 62 of this sales brochure for legend of the terms and abbreviations shown in the floor plans.
- The residential properties shown on this floor plan are treated as investment properties, and are not intended for sale by the Vendor.

備註：

- 樓面平面圖所列數字為以毫米標示之建築結構尺寸，並以四捨五入至整數。
- 有關紓緩噪音措施之詳情，請參閱本售樓說明書的有關資料章節。
- 樓面平面圖中顯示之名詞及簡稱之圖例，請參閱本售樓說明書第62頁。
- 賣方將此樓面平面圖所載之住宅物業視為投資物業，並不打算提供出售。

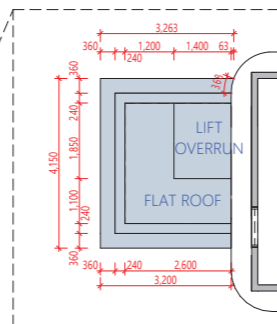
Floor plans of residential properties in the development

發展項目的住宅物業的樓面平面圖

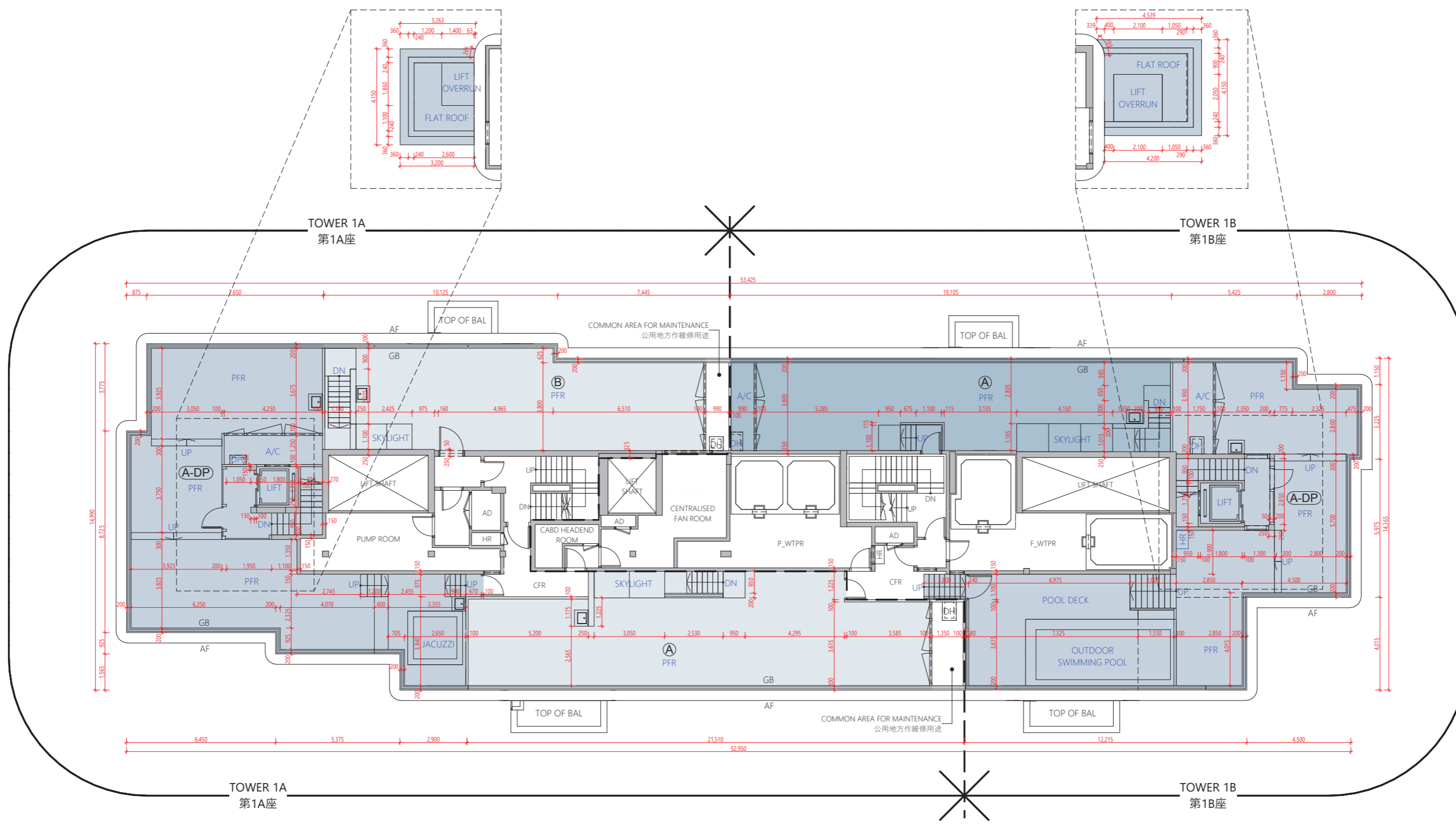
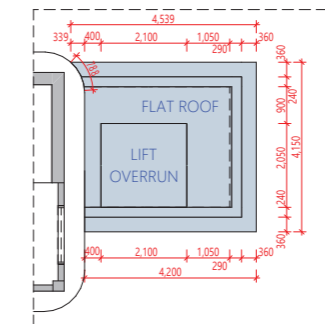
Tower 1A & Tower 1B
第1A座及第1B座

Roof
天台

PART PLAN OF TOWER 1A FLAT A-DP UPPER ROOF
第1A座A-DP單位之上層天台部分平面圖



PART PLAN OF TOWER 1B FLAT A-DP UPPER ROOF
第1B座A-DP單位之上層天台部分平面圖



Remark:
The residential properties shown on this floor plan are treated as investment properties, and are not intended for sale by the Vendor.

備註：
賣方將此樓面平面圖所載之住宅物業視為投資物業，並不打算提供出售。



Floor plans of residential properties in the development

發展項目的住宅物業的樓面平面圖

Tower 2A & Tower 2B 5/F (4/F is omitted)
第2A座及第2B座 5樓 (不設4樓)

Description 描述	Tower 2A 第2A座							Tower 2B 第2B座						
	Flat 單位							Flat 單位						
	A	B	C	D	E	F	G	A	B	C	D	E	F	G
Floor-to-floor height (refers to the height between the top surface of the structural slab of a floor and the top surface of the structural slab of its immediate upper floor) of each residential property (m) 每個住宅物業的層與層之間的高度 (指該樓層之石屎地台面與上一層石屎地台面之高度距離) (米)	2.800 2.900 3.150		2.800 2.825 2.900 3.150	2.800 2.900 3.150	2.800 3.150 3.325 3.375	2.800 2.900 3.150	2.825 2.900 3.150		2.800 2.900 3.150		2.800 3.150 3.325 3.375		2.800 2.900 3.150 3.325 3.375	
Thickness of the floor slabs (excluding plaster) of each residential property (mm) 每個住宅物業的樓板 (不包括灰泥) 的厚度 (毫米)	150					150 175		150 175			150			

The internal areas of the residential properties on the upper floors will generally be slightly larger than those on the lower floors because of the reducing thickness of the structural walls on the upper floors (Note: This statement as required under section 10(2)(e) of Part 1 of Schedule 1 to the Residential Properties (First-hand Sales) Ordinance is not applicable to the Development).

因住宅物業的較高樓層的結構牆的厚度遞減，較高樓層的內部面積，一般比較低樓層的內部面積稍大(備註：此《一手住宅物業銷售條例》附表1第1部第10(2)(e)條規定之陳述並不適用於發展項目)。

Remarks:

- The dimensions in the floor plans are all structural dimensions in millimetre and rounded off to the nearest integer.
- For details of the noise mitigation measures, please refer to the Relevant Information section in this sales brochure.
- Please refer to Page 62 of this sales brochure for legend of the terms and abbreviations shown in the floor plans.
- (~)/(/)(')(*)(#)(^)(+) The floor-to-floor height (i.e. the height between the top surface of the structural slab of that floor and the top surface of the structured slab of its immediate upper floor) includes, without limitation, a height of sunken slab of 0.250m(~), 0.275m(/), 0.300m('), 0.325m("), 0.350m(*), 0.400m(#), 0.450m(^) and 0.550m(+), located partly on the structural slab of that floor or its immediate upper floor.

備註：

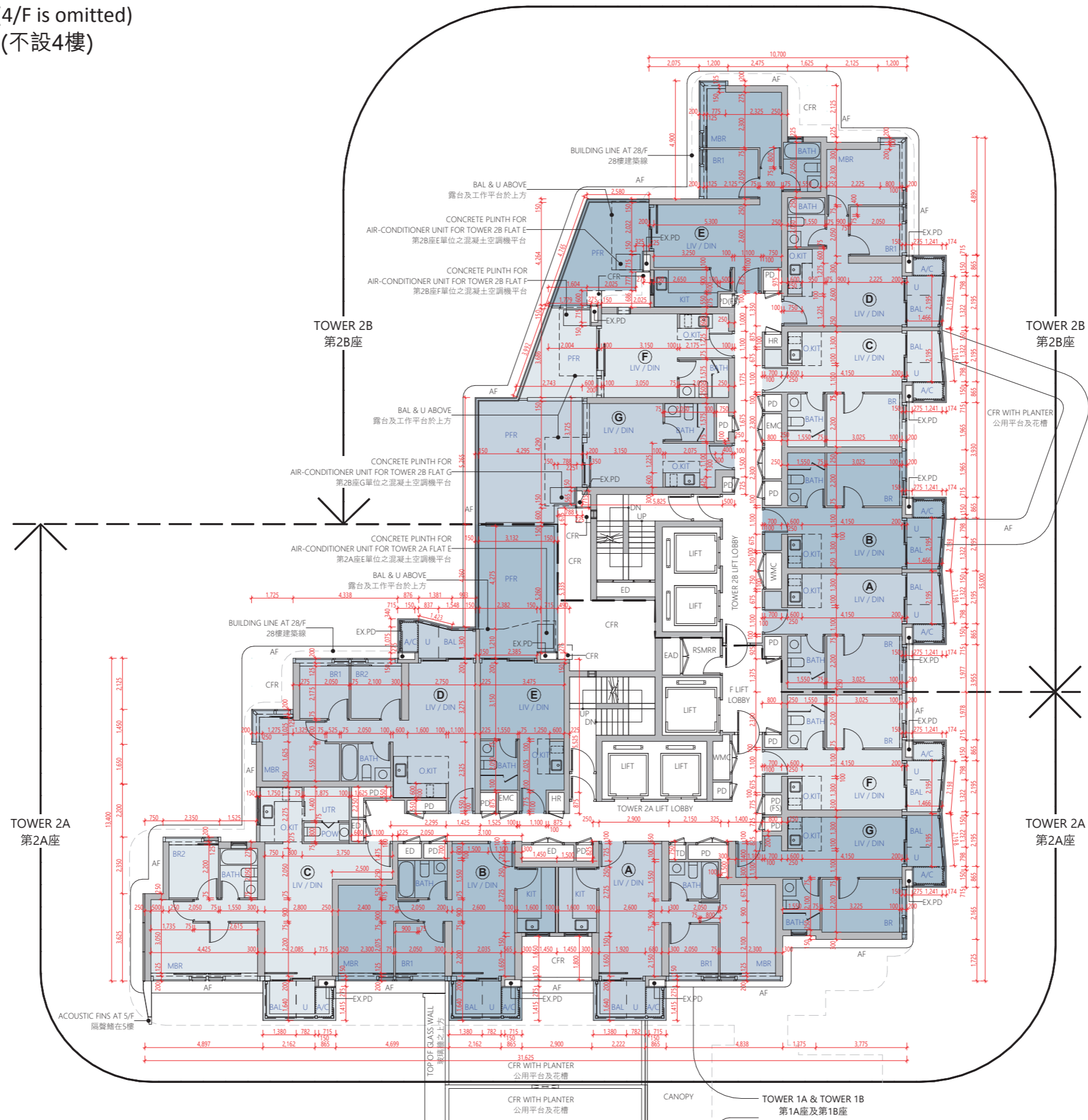
- 樓面平面圖所列數字為以毫米標示之建築結構尺寸，並以四捨五入至整數。
- 有關紓緩噪音措施之詳情，請參閱本售樓說明書的有關資料章節。
- 樓面平面圖中顯示之名詞及簡稱之圖例，請參閱本售樓說明書第62頁。
- (~)/(/)(')(*)(#)(^)(+)層與層之間的高度(指該樓層之石屎地台面與上一層石屎地台面之高度距離)包括但不限於高度為0.250米(~)、0.275米(/)、0.300米(')、0.325米(")、0.350米(*)、0.400米(#)、0.450米(^)及0.550米(+)-之跌級樓板(該等跌級樓板有部分位於該樓層或上一層之石屎地台面)。

Floor plans of residential properties in the development

發展項目的住宅物業的樓面平面圖

Tower 2A & Tower 2B
第2A座及第2B座

5/F (4/F is omitted)
5樓 (不設4樓)



Scale 比例



Floor plans of residential properties in the development

發展項目的住宅物業的樓面平面圖

Tower 2A & Tower 2B 6/F-11/F
第2A座及第2B座 6樓至11樓

Description 描述		Tower 2A 第2A座						Tower 2B 第2B座							
		Flat 單位						Flat 單位							
		A	B	C	D	E	F	G	A	B	C	D	E	F	G
Floor-to-floor height (refers to the height between the top surface of the structural slab of a floor and the top surface of the structural slab of its immediate upper floor) of each residential property (m) 每個住宅物業的層與層之間的高度 (指該樓層之石屎地台面與上一層石屎地台面之高度距離) (米)	6/F-11/F 6樓至11樓														
Thickness of the floor slabs (excluding plaster) of each residential property (mm) 每個住宅物業的樓板 (不包括灰泥) 的厚度 (毫米)															

The internal areas of the residential properties on the upper floors will generally be slightly larger than those on the lower floors because of the reducing thickness of the structural walls on the upper floors (Note: This statement as required under section 10(2)(e) of Part 1 of Schedule 1 to the Residential Properties (First-hand Sales) Ordinance is not applicable to the Development).

因住宅物業的較高樓層的結構牆的厚度遞減，較高樓層的內部面積，一般比較低樓層的內部面積稍大(備註：此《一手住宅物業銷售條例》附表1第1部第10(2)(e)條規定之陳述並不適用於發展項目)。

Remarks:

- The dimensions in the floor plans are all structural dimensions in millimetre and rounded off to the nearest integer.
- For details of the noise mitigation measures, please refer to the Relevant Information section in this sales brochure.
- Please refer to Page 62 of this sales brochure for legend of the terms and abbreviations shown in the floor plans.
- (~)(/)(')(")(*)(#)(^)(+) The floor-to-floor height (i.e. the height between the top surface of the structural slab of that floor and the top surface of the structured slab of its immediate upper floor) includes, without limitation, a height of sunken slab of 0.250m(~), 0.275m(/), 0.300m('), 0.325m("), 0.350m(*), 0.400m(#), 0.450m(^) and 0.550m(+), located partly on the structural slab of that floor or its immediate upper floor.

備註：

- 樓面平面圖所列數字為以毫米標示之建築結構尺寸，並以四捨五入至整數。
- 有關紓緩噪音措施之詳情，請參閱本售樓說明書的有關資料章節。
- 樓面平面圖中顯示之名詞及簡稱之圖例，請參閱本售樓說明書第62頁。
- (~)(/)(')(")(*)(#)(^)(+)層與層之間的高度(指該樓層之石屎地台面與上一層石屎地台面之高度距離)包括但不限於高度為0.250米(~)、0.275米(/)、0.300米(')、0.325米(")、0.350米(*)、0.400米(#)、0.450米(^)及0.550米(+)-之跌級樓板(該等跌級樓板有部分位於該樓層或上一層之石屎地台面)。

Floor plans of residential properties in the development

發展項目的住宅物業的樓面平面圖

Tower 2A & Tower 2B
第2A座及第2B座

6/F-11/F
6樓至11樓



Scale 比例
0 2 10m (米)

Floor plans of residential properties in the development

發展項目的住宅物業的樓面平面圖

Tower 2A & Tower 2B 12/F, 15/F -23/F & 25/F -26/F (13/F, 14/F & 24/F are omitted)
 第2A座及第2B座 12樓、15樓至23樓及25樓至26樓 (不設13樓、14樓及24樓)

Description 描述		Tower 2A 第2A座						Tower 2B 第2B座						
		Flat 單位						Flat 單位						
		A	B	C	D	E	F	G	A	B	C	D	E	F
Floor-to-floor height (refers to the height between the top surface of the structural slab of a floor and the top surface of the structural slab of its immediate upper floor) of each residential property (m) 每個住宅物業的層與層之間的高度 (指該樓層之石屎地台面與上一層石屎地台面之高度距離) (米)	12/F, 15/F -23/F & 25/F 12樓、15樓至23樓及25樓	3.150 3.150~ 3.150*		3.150 3.150~ 3.150"	3.150 3.150~ 3.150*	3.150 3.150~ 3.150*	3.150 3.150~ 3.150"	3.150 3.150~ 3.150"		3.150 3.150~ 3.150*		3.150 3.150~ 3.150*		3.150 3.150~ 3.150*
Thickness of the floor slabs (excluding plaster) of each residential property (mm) 每個住宅物業的樓板 (不包括灰泥) 的厚度 (毫米)		150			150 175			150 175			150			
Floor-to-floor height (refers to the height between the top surface of the structural slab of a floor and the top surface of the structural slab of its immediate upper floor) of each residential property (m) 每個住宅物業的層與層之間的高度 (指該樓層之石屎地台面與上一層石屎地台面之高度距離) (米)	26/F 26樓	3.050 3.150 3.400~ 3.500*		3.050 3.150 3.400~ 3.475" 3.500*	3.050 3.150 3.400~ 3.500*	3.050 3.150 3.500*	2.950 3.150 3.400~ 3.500*	2.950 3.150 3.400~ 3.475"		2.950 3.150 3.400~ 3.500*		2.950 3.150 3.500*	3.050 3.150 3.500*	3.050 3.150 3.400~ 3.500*
Thickness of the floor slabs (excluding plaster) of each residential property (mm) 每個住宅物業的樓板 (不包括灰泥) 的厚度 (毫米)		150			150 175			150 175			150			

The internal areas of the residential properties on the upper floors will generally be slightly larger than those on the lower floors because of the reducing thickness of the structural walls on the upper floors (Note: This statement as required under section 10(2)(e) of Part 1 of Schedule 1 to the Residential Properties (First-hand Sales) Ordinance is not applicable to the Development).

因住宅物業的較高樓層的結構牆的厚度遞減，較高樓層的內部面積，一般比較低樓層的內部面積稍大(備註：此《一手住宅物業銷售條例》附表1第1部第10(2)(e)條規定之陳述並不適用於發展項目)。

Remarks:

- The dimensions in the floor plans are all structural dimensions in millimetre and rounded off to the nearest integer.
- For details of the noise mitigation measures, please refer to the Relevant Information section in this sales brochure.
- Please refer to page 27 of this sales brochure for the internal acoustic sliding panels shown on the floor plan.
- Please refer to Page 62 of this sales brochure for legend of the terms and abbreviations shown in the floor plans.
- (~)/(/)(')(*)(#)(^)(+) The floor-to-floor height (i.e. the height between the top surface of the structural slab of that floor and the top surface of the structured slab of its immediate upper floor) includes, without limitation, a height of sunken slab of 0.250m(~), 0.275m(/), 0.300m('), 0.325m("), 0.350m(*), 0.400m(#), 0.450m(^) and 0.550m(+) located partly on the structural slab of that floor or its immediate upper floor.

備註：

- 樓面平面圖所列數字為以毫米標示之建築結構尺寸，並以四捨五入至整數。
- 有關舒緩噪音措施之詳情，請參閱本售樓說明書的有關資料章節。
- 樓面平面圖中顯示之內層隔音趟板，請參閱本售樓說明書第27頁。
- 樓面平面圖中顯示之名詞及簡稱之圖例，請參閱本售樓說明書第62頁。
- (~)/(/)(')(*)(#)(^)(+)層與層之間的高度(指該樓層之石屎地台面與上一層石屎地台面之高度距離)包括但不限於高度為0.250米(~)、0.275米(/)、0.300米(')、0.325米(")、0.350米(*)、0.400米(#)、0.450米(^)及0.550米(+)-之跌級樓板(該等跌級樓板有部分位於該樓層或上一層之石屎地台面)。

Floor plans of residential properties in the development

發展項目的住宅物業的樓面平面圖

Tower 2A & Tower 2B
第2A座及第2B座

12/F, 15/F -23/F & 25/F -26/F (13/F, 14/F & 24/F are omitted)
12樓、15樓至23樓及25樓至26樓 (不設13樓、14樓及24樓)



Floor plans of residential properties in the development

發展項目的住宅物業的樓面平面圖

Tower 2A & Tower 2B 29/F
第2A座及第2B座 29樓

Description 描述	Tower 2A 第2A座						Tower 2B 第2B座					
	Flat 單位						Flat 單位					
	A	B	C	D	E	F	A	B	C	D	E	F
Floor-to-floor height (refers to the height between the top surface of the structural slab of a floor and the top surface of the structural slab of its immediate upper floor) of each residential property (m) 每個住宅物業的層與層之間的高度 (指該樓層之石屎地台面與上一層石屎地台面之高度距離) (米)	2.800 3.150 3.150*	2.800 3.150 3.150* 3.150` 3.150" 3.175* 3.225 3.500*	2.900 3.150 3.150* 3.150~ 3.250* 3.500*	3.150 3.150*	2.900 3.150 3.150* 3.150~ 3.400~	2.800 3.150 3.150~ 3.150*	3.150 3.150* 3.150~	2.800 3.150 3.150*	3.150 3.150*	2.800 3.150 3.150*	3.150 3.150*	2.800 3.150 3.150~ 3.150* 3.500*
Thickness of the floor slabs (excluding plaster) of each residential property (mm) 每個住宅物業的樓板 (不包括灰泥) 的厚度 (毫米)	150 175	150	150	150 175	150 175	150 175	150 175	150 175	150	150 175	150 175	

The internal areas of the residential properties on the upper floors will generally be slightly larger than those on the lower floors because of the reducing thickness of the structural walls on the upper floors (Note: This statement as required under section 10(2)(e) of Part 1 of Schedule 1 to the Residential Properties (First-hand Sales) Ordinance is not applicable to the Development).

因住宅物業的較高樓層的結構牆的厚度遞減，較高樓層的內部面積，一般比較低樓層的內部面積稍大(備註：此《一手住宅物業銷售條例》附表1第1部第10(2)(e)條規定之陳述並不適用於發展項目)。

Remarks:

- The dimensions in the floor plans are all structural dimensions in millimetre and rounded off to the nearest integer.
- For details of the noise mitigation measures, please refer to the Relevant Information section in this sales brochure.
- Please refer to Page 62 of this sales brochure for legend of the terms and abbreviations shown in the floor plans.
- (~)(/)(')(")(*)(#)(^)(+) The floor-to-floor height (i.e. the height between the top surface of the structural slab of that floor and the top surface of the structured slab of its immediate upper floor) includes, without limitation, a height of sunken slab of 0.250m(~), 0.275m(/), 0.300m('), 0.325m("), 0.350m(*), 0.400m(#), 0.450m(^) and 0.550m(+), located partly on the structural slab of that floor or its immediate upper floor.

備註：

- 樓面平面圖所列數字為以毫米標示之建築結構尺寸，並以四捨五入至整數。
- 有關紓緩噪音措施之詳情，請參閱本售樓說明書的有關資料章節。
- 樓面平面圖中顯示之名詞及簡稱之圖例，請參閱本售樓說明書第62頁。
- (~)(/)(')(")(*)(#)(^)(+)層與層之間的高度(指該樓層之石屎地台面與上一層石屎地台面之高度距離)包括但不限於高度為0.250米(~)、0.275米(/)、0.300米(')、0.325米(")、0.350米(*)、0.400米(#)、0.450米(^)及0.550米(+)-之跌級樓板(該等跌級樓板有部分位於該樓層或上一層之石屎地台面)。

Floor plans of residential properties in the development

發展項目的住宅物業的樓面平面圖

Tower 2A & Tower 2B
第2A座及第2B座

29/F
29樓



Scale 比例



Floor plans of residential properties in the development

發展項目的住宅物業的樓面平面圖

Tower 2A & Tower 2B 30/F-33/F & 35/F-39/F (34/F is omitted)
 第2A座及第2B座 30樓至33樓及35樓至39樓 (不設34樓)

Description 描述	Floor 樓層	Tower 2A 第2A座						Tower 2B 第2B座					
		Flat 單位						Flat 單位					
		A	B	C	D	E	F	A	B	C	D	E	F
Floor-to-floor height (refers to the height between the top surface of the structural slab of a floor and the top surface of the structural slab of its immediate upper floor) of each residential property (m) 每個住宅物業的層與層之間的高度 (指該樓層之石屎地台面與上一層石屎地台面之高度距離) (米)	30/F-33/F & 35/F-38/F 30樓至33樓及35樓至38樓	3.150	3.150	3.150	3.150	3.150	3.150	3.150	3.150	3.150	3.150	3.150	3.150
3.150*		3.150~ 3.150* 3.150"	3.150~ 3.150*	3.150 3.150*	3.150~ 3.150*	3.150/	3.150~	3.150	3.150~ 3.150*	3.150	3.150*	3.150~ 3.150*	
Thickness of the floor slabs (excluding plaster) of each residential property (mm) 每個住宅物業的樓板 (不包括灰泥) 的厚度 (毫米)		150	175	150	150	175	150	175	150	175	150	175	
Floor-to-floor height (refers to the height between the top surface of the structural slab of a floor and the top surface of the structural slab of its immediate upper floor) of each residential property (m) 每個住宅物業的層與層之間的高度 (指該樓層之石屎地台面與上一層石屎地台面之高度距離) (米)	39/F 39樓	3.150	3.150 3.450	3.150	3.100	3.150	3.150	3.150	3.450	3.150	3.100	3.050	3.150
3.450		3.475"	3.400~	3.150	3.450	3.400~	3.450	3.450	3.450	3.450	3.150	3.100	3.450
3.500	3.500*	3.450	3.450	3.450	3.450	3.500	3.425/	3.500	3.450*	3.450	3.450*	3.150	3.500
3.500*	3.750~	3.500	3.450*	3.500	3.450*	3.500*	3.450	3.500*	3.500	3.450*	3.500	3.450	3.750~
3.850*	3.800` 3.825" 3.850*	3.500*	3.500	3.750~	3.850*	3.750~	3.500	3.750~	3.750~	3.500	3.500*	3.500	3.850*
Thickness of the floor slabs (excluding plaster) of each residential property (mm) 每個住宅物業的樓板 (不包括灰泥) 的厚度 (毫米)		150	175	150	150	175	150	175	150	175	150	175	

The internal areas of the residential properties on the upper floors will generally be slightly larger than those on the lower floors because of the reducing thickness of the structural walls on the upper floors (Note: This statement as required under section 10(2)(e) of Part 1 of Schedule 1 to the Residential Properties (First-hand Sales) Ordinance is not applicable to the Development).

因住宅物業的較高樓層的結構牆的厚度遞減，較高樓層的內部面積，一般比較低樓層的內部面積稍大(備註：此《一手住宅物業銷售條例》附表1第1部第10(2)(e)條規定之陳述並不適用於發展項目)。

Remarks:

- The dimensions in the floor plans are all structural dimensions in millimetre and rounded off to the nearest integer.
- For details of the noise mitigation measures, please refer to the Relevant Information section in this sales brochure.
- Please refer to page 27 of this sales brochure for the internal acoustic sliding panels shown on the floor plan.
- Please refer to Page 62 of this sales brochure for legend of the terms and abbreviations shown in the floor plans.
- (~)/(/)(')(*)(#)(^)(+) The floor-to-floor height (i.e. the height between the top surface of the structural slab of that floor and the top surface of the structured slab of its immediate upper floor) includes, without limitation, a height of sunken slab of 0.250m(~), 0.275m(/), 0.300m('), 0.325m("), 0.350m(*), 0.400m(#), 0.450m(^) and 0.550m(+) located partly on the structural slab of that floor or its immediate upper floor.

備註：

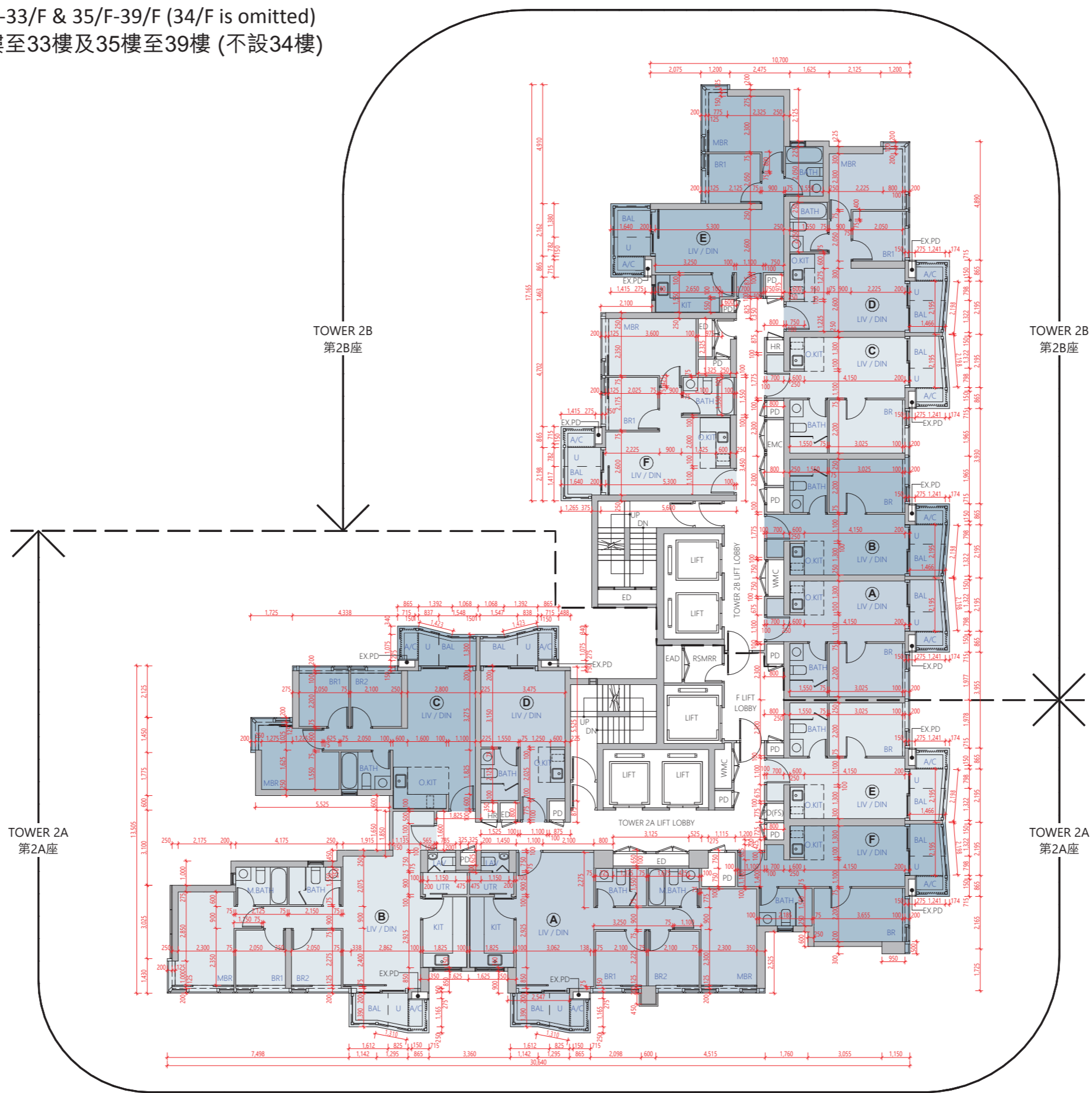
- 樓面平面圖所列數字為以毫米標示之建築結構尺寸，並以四捨五入至整數。
- 有關舒緩噪音措施之詳情，請參閱本售樓說明書的有關資料章節。
- 樓面平面圖中顯示之內層隔音趟板，請參閱本售樓說明書第27頁。
- 樓面平面圖中顯示之名詞及簡稱之圖例，請參閱本售樓說明書第62頁。
- (~)/(/)(')(*)(#)(^)(+)層與層之間的高度(指該樓層之石屎地台面與上一層石屎地台面之高度距離)包括但不限於高度為0.250米(~)、0.275米(/)、0.300米(')、0.325米(")、0.350米(*)、0.400米(#)、0.450米(^)及0.550米(+)-之跌級樓板(該等跌級樓板有部分位於該樓層或上一層之石屎地台面)。

Floor plans of residential properties in the development

發展項目的住宅物業的樓面平面圖

Tower 2A & Tower 2B
第2A座及第2B座

30/F-33/F & 35/F-39/F (34/F is omitted)
30樓至33樓及35樓至39樓 (不設34樓)



Scale 比例



Floor plans of residential properties in the development

發展項目的住宅物業的樓面平面圖

Tower 2A & Tower 2B 40/F
第2A座及第2B座 40樓

Description 描述	Tower 2A 第2A座			Tower 2B 第2B座	
	Flat 單位			Flat 單位	
	A	B	C	A	B
Floor-to-floor height (refers to the height between the top surface of the structural slab of a floor and the top surface of the structural slab of its immediate upper floor) of each residential property (m) 每個住宅物業的層與層之間的高度 (指該樓層之石屎地台面與上一層石屎地台面之高度距離) (米)	3.100 3.325 3.500 3.850*	3.150 3.325 3.500 3.850* 3.900#	3.150 3.500 3.500* 3.850*	3.150 3.500 3.500* 3.500# 3.850* 3.900#	3.150 3.450# 3.500 3.500* 3.500# 3.500^ 3.850* 3.900#
Thickness of the floor slabs (excluding plaster) of each residential property (mm) 每個住宅物業的樓板 (不包括灰泥) 的厚度 (毫米)	150 175			150 175	150 175 200

The internal areas of the residential properties on the upper floors will generally be slightly larger than those on the lower floors because of the reducing thickness of the structural walls on the upper floors (Note: This statement as required under section 10(2)(e) of Part 1 of Schedule 1 to the Residential Properties (First-hand Sales) Ordinance is not applicable to the Development).

因住宅物業的較高樓層的結構牆的厚度遞減，較高樓層的內部面積，一般比較低樓層的內部面積稍大(備註：此《一手住宅物業銷售條例》附表1第1部第10(2)(e)條規定之陳述並不適用於發展項目)。

Remarks:

- The dimensions in the floor plans are all structural dimensions in millimetre and rounded off to the nearest integer.
- For details of the noise mitigation measures, please refer to the Relevant Information section in this sales brochure.
- Please refer to Page 62 of this sales brochure for legend of the terms and abbreviations shown in the floor plans.
- (~)/(/)(')(*)(#)(^)(+) The floor-to-floor height (i.e. the height between the top surface of the structural slab of that floor and the top surface of the structured slab of its immediate upper floor) includes, without limitation, a height of sunken slab of 0.250m(~), 0.275m(/), 0.300m('), 0.325m("), 0.350m(*), 0.400m(#), 0.450m(^) and 0.550m(+), located partly on the structural slab of that floor or its immediate upper floor.

備註：

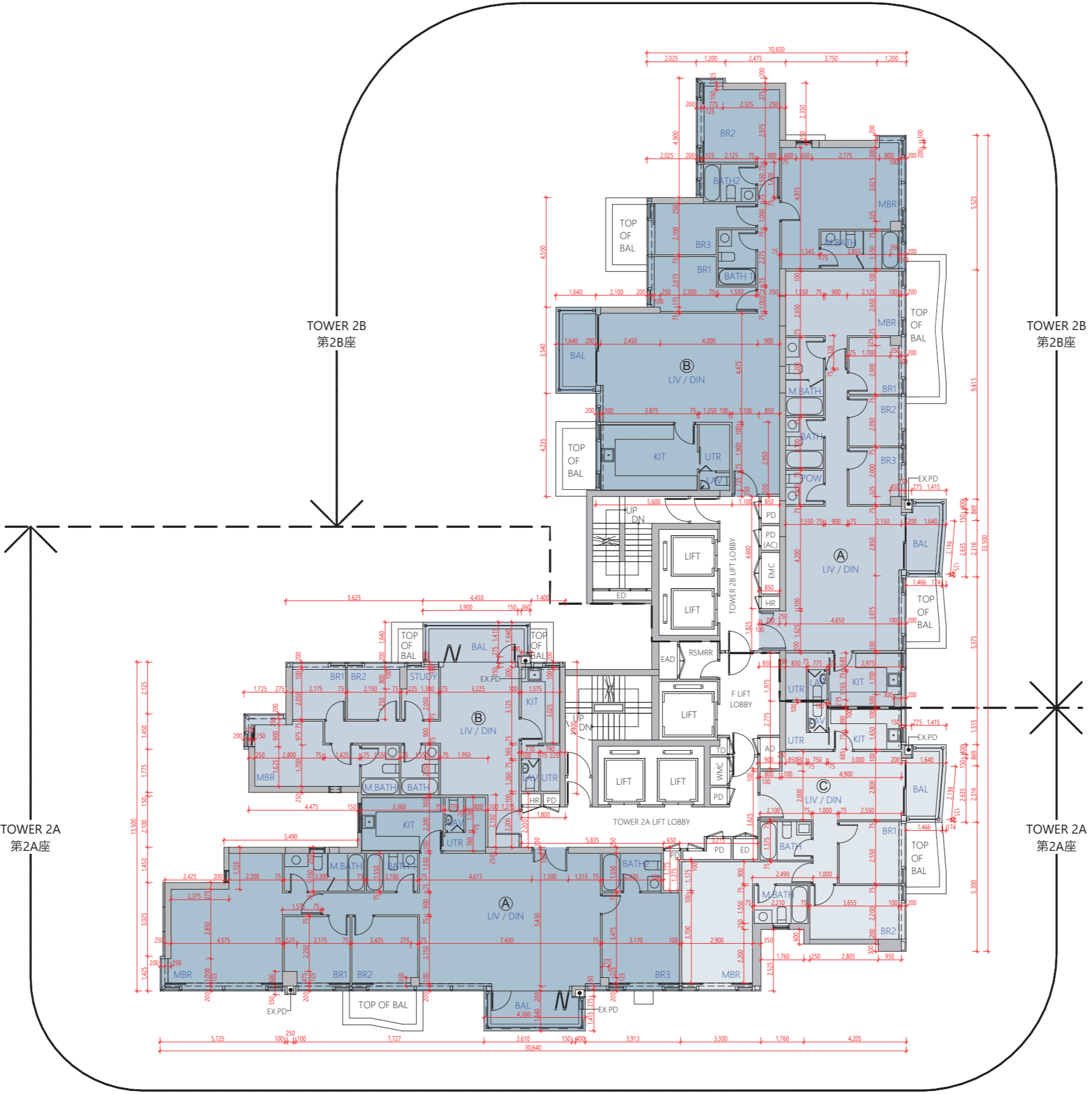
- 樓面平面圖所列數字為以毫米標示之建築結構尺寸，並以四捨五入至整數。
- 有關紓緩噪音措施之詳情，請參閱本售樓說明書的有關資料章節。
- 樓面平面圖中顯示之名詞及簡稱之圖例，請參閱本售樓說明書第62頁。
- (~)/(/)(')(*)(#)(^)(+)層與層之間的高度(指該樓層之石屎地台面與上一層石屎地台面之高度距離)包括但不限於高度為0.250米(~)、0.275米(/)、0.300米(')、0.325米(")、0.350米(*)、0.400米(#)、0.450米(^)及0.550米(+)-之跌級樓板(該等跌級樓板有部分位於該樓層或上一層之石屎地台面)。

Floor plans of residential properties in the development

發展項目的住宅物業的樓面平面圖

Tower 2A & Tower 2B
第2A座及第2B座

40/F
40樓



Floor plans of residential properties in the development

發展項目的住宅物業的樓面平面圖

Tower 2A & Tower 2B 41/F
第2A座及第2B座 41樓

Description 描述	Tower 2A 第2A座		Tower 2B 第2B座	
	Flat 單位		Flat 單位	
	A-DP	B-DP	A	B
Floor-to-floor height (refers to the height between the top surface of the structural slab of a floor and the top surface of the structural slab of its immediate upper floor) of each residential property (m) 每個住宅物業的層與層之間的高度 (指該樓層之石屎地台面與上一層石屎地台面之高度距離) (米)	3.100 3.150 3.500 3.500* 3.850*	3.050 3.100 3.150 3.400* 3.450* 3.500 3.550# 3.900#	3.150 3.500 3.500* 3.500# 3.850*	3.500 3.500* 3.500# 3.500^
Thickness of the floor slabs (excluding plaster) of each residential property (mm) 每個住宅物業的樓板 (不包括灰泥) 的厚度 (毫米)	150 175 200		150 175	150 175 200

The internal areas of the residential properties on the upper floors will generally be slightly larger than those on the lower floors because of the reducing thickness of the structural walls on the upper floors (Note: This statement as required under section 10(2)(e) of Part 1 of Schedule 1 to the Residential Properties (First-hand Sales) Ordinance is not applicable to the Development).

因住宅物業的較高樓層的結構牆的厚度遞減，較高樓層的內部面積，一般比較低樓層的內部面積稍大(備註：此《一手住宅物業銷售條例》附表1第1部第10(2)(e)條規定之陳述並不適用於發展項目)。

Remarks:

- The dimensions in the floor plans are all structural dimensions in millimetre and rounded off to the nearest integer.
- For details of the noise mitigation measures, please refer to the Relevant Information section in this sales brochure.
- Please refer to Page 62 of this sales brochure for legend of the terms and abbreviations shown in the floor plans.
- The residential properties shown on this floor plan are treated as investment properties, and are not intended for sale by the Vendor.
- (~)/(/)(')(")(*)#(^)(+) The floor-to-floor height (i.e. the height between the top surface of the structural slab of that floor and the top surface of the structured slab of its immediate upper floor) includes, without limitation, a height of sunken slab of 0.250m(~), 0.275m(/), 0.300m('), 0.325m("), 0.350m(*), 0.400m(#), 0.450m(^) and 0.550m(+), located partly on the structural slab of that floor or its immediate upper floor.

備註：

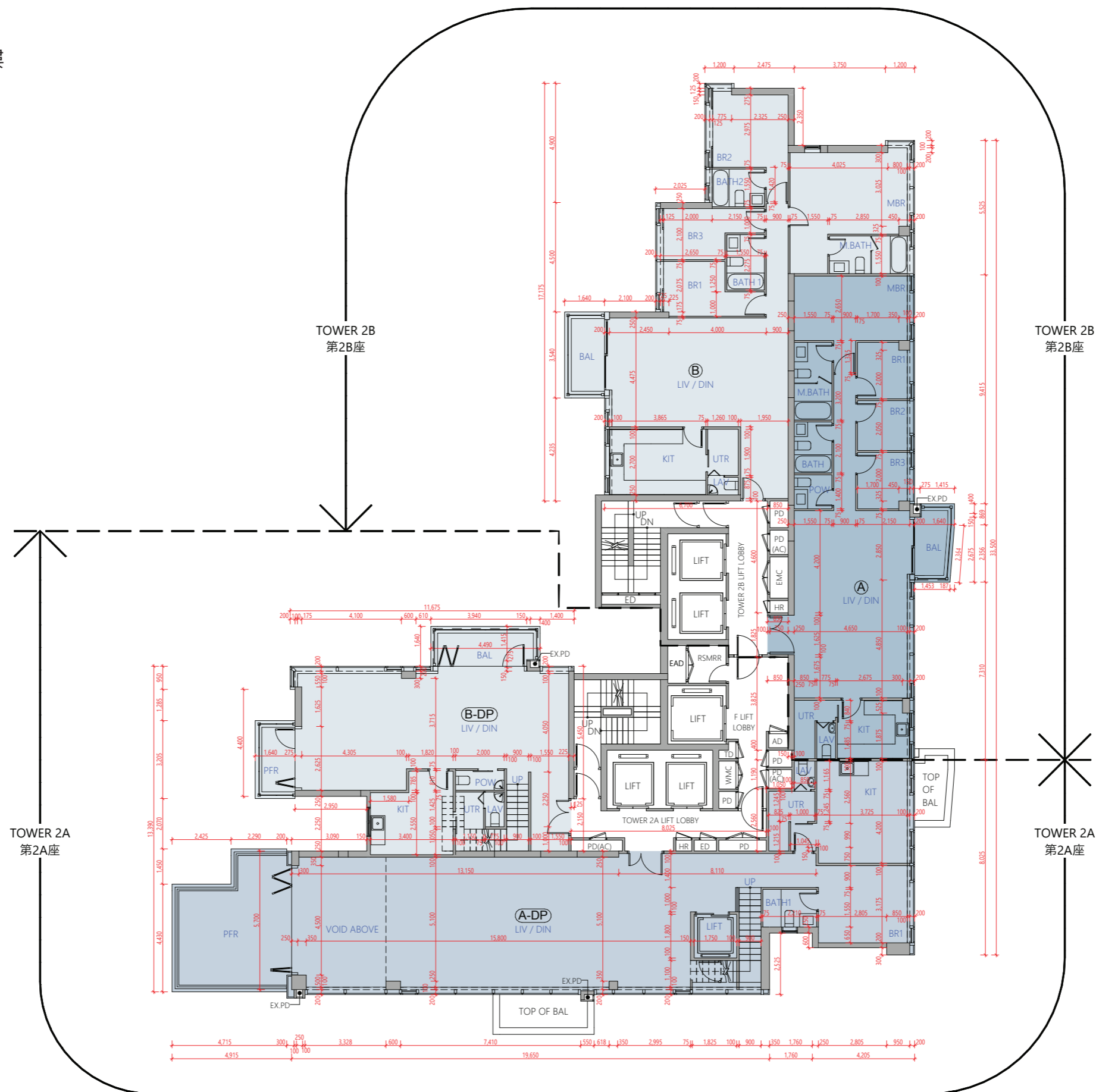
- 樓面平面圖所列數字為以毫米標示之建築結構尺寸，並以四捨五入至整數。
- 有關舒緩噪音措施之詳情，請參閱本售樓說明書的有關資料章節。
- 樓面平面圖中顯示之名詞及簡稱之圖例，請參閱本售樓說明書第62頁。
- 賣方將此樓面平面圖所載之住宅物業視為投資物業，並不打算提供出售。
- (~)/(/)(')(")(*)#(^)(+)層與層之間的高度(指該樓層之石屎地台面與上一層石屎地台面之高度距離)包括但不限於高度為0.250米(~)、0.275米(/)、0.300米(')、0.325米(")、0.350米(*)、0.400米(#)、0.450米(^)及0.550米(+)-之跌級樓板(該等跌級樓板有部分位於該樓層或上一層之石屎地台面)。

Floor plans of residential properties in the development

發展項目的住宅物業的樓面平面圖

Tower 2A & Tower 2B
第2A座及第2B座

41/F
41樓



Scale 比例

0 2 10m (米)

Remark:

The residential properties shown on this floor plan are treated as investment properties, and are not intended for sale by the Vendor.

備註:

賣方將此樓面平面圖所載之住宅物業視為投資物業，並不打算提供出售。

Floor plans of residential properties in the development

發展項目的住宅物業的樓面平面圖

Tower 2A & Tower 2B 42/F
第2A座及第2B座 42樓

Description 描述	Tower 2A 第2A座		Tower 2B 第2B座	
	Flat 單位		Flat 單位	
	A-DP	B-DP	A	B
Floor-to-floor height (refers to the height between the top surface of the structural slab of a floor and the top surface of the structural slab of its immediate upper floor) of each residential property (m) 每個住宅物業的層與層之間的高度 (指該樓層之石屎地台面與上一層石屎地台面之高度距離) (米)	3.150 3.500 3.850* 3.900#	3.500 3.850* 3.900# 3.950^	3.500 3.850*	3.500 3.850* 3.900# 3.950^
Thickness of the floor slabs (excluding plaster) of each residential property (mm) 每個住宅物業的樓板 (不包括灰泥) 的厚度 (毫米)	150 175 200 300	150 200	150 175	150 175 200

The internal areas of the residential properties on the upper floors will generally be slightly larger than those on the lower floors because of the reducing thickness of the structural walls on the upper floors (Note: This statement as required under section 10(2)(e) of Part 1 of Schedule 1 to the Residential Properties (First-hand Sales) Ordinance is not applicable to the Development).

因住宅物業的較高樓層的結構牆的厚度遞減，較高樓層的內部面積，一般比較低樓層的內部面積稍大(備註：此《一手住宅物業銷售條例》附表1第1部第10(2)(e)條規定之陳述並不適用於發展項目)。

Remarks:

- The dimensions in the floor plans are all structural dimensions in millimetre and rounded off to the nearest integer.
- For details of the noise mitigation measures, please refer to the Relevant Information section in this sales brochure.
- Please refer to Page 62 of this sales brochure for legend of the terms and abbreviations shown in the floor plans.
- The residential properties shown on this floor plan are treated as investment properties, and are not intended for sale by the Vendor.
- (~)(/)(')(")(*)#(^)(+) The floor-to-floor height (i.e. the height between the top surface of the structural slab of that floor and the top surface of the structured slab of its immediate upper floor) includes, without limitation, a height of sunken slab of 0.250m(~), 0.275m(/), 0.300m('), 0.325m("), 0.350(*), 0.400m(#), 0.450m(^) and 0.550m(+), located partly on the structural slab of that floor or its immediate upper floor.

備註：

- 樓面平面圖所列數字為以毫米標示之建築結構尺寸，並以四捨五入至整數。
- 有關紓緩噪音措施之詳情，請參閱本售樓說明書的有關資料章節。
- 樓面平面圖中顯示之名詞及簡稱之圖例，請參閱本售樓說明書第62頁。
- 賣方將此樓面平面圖所載之住宅物業視為投資物業，並不打算提供出售。
- (~)(/)(')(")(*)#(^)(+)層與層之間的高度(指該樓層之石屎地台面與上一層石屎地台面之高度距離)包括但不限於高度為0.250米(~)、0.275米(/)、0.300米(')、0.325米(")、0.350米(*)、0.400米(#)、0.450米(^)及0.550米(+)-之跌級樓板(該等跌級樓板有部分位於該樓層或上一層之石屎地台面)。

Floor plans of residential properties in the development

發展項目的住宅物業的樓面平面圖

Tower 2A & Tower 2B
第2A座及第2B座

42/F
42樓



Remark:
The residential properties shown on this floor plan are treated as investment properties, and are not intended for sale by the Vendor.

備註：
賣方將此樓面平面圖所載之住宅物業視為投資物業，並不打算提供出售。



Floor plans of residential properties in the development

發展項目的住宅物業的樓面平面圖

Tower 2A & Tower 2B
第2A座及第2B座

Roof
天台

Description 描述	Tower 2A 第2A座		Tower 2B 第2B座	
	Flat 單位		Flat 單位	
	A-DP	B-DP	A	B
Floor-to-floor height (refers to the height between the top surface of the structural slab of a floor and the top surface of the structural slab of its immediate upper floor) of each residential property (m) 每個住宅物業的層與層之間的高度 (指該樓層之石屎地台面與上一層石屎地台面之高度距離) (米)	2.900	Not Applicable 不適用	Not Applicable 不適用	
Thickness of the floor slabs (excluding plaster) of each residential property (mm) 每個住宅物業的樓板 (不包括灰泥) 的厚度 (毫米)	150	Not Applicable 不適用	Not Applicable 不適用	

The internal areas of the residential properties on the upper floors will generally be slightly larger than those on the lower floors because of the reducing thickness of the structural walls on the upper floors (Note: This statement as required under section 10(2)(e) of Part 1 of Schedule 1 to the Residential Properties (First-hand Sales) Ordinance is not applicable to the Development).

因住宅物業的較高樓層的結構牆的厚度遞減，較高樓層的內部面積，一般比較低樓層的內部面積稍大(備註：此《一手住宅物業銷售條例》附表1第1部第10(2)(e)條規定之陳述並不適用於發展項目)。

Remarks:

- The dimensions in the floor plans are all structural dimensions in millimetre and rounded off to the nearest integer.
- For details of the noise mitigation measures, please refer to the Relevant Information section in this sales brochure.
- Please refer to Page 62 of this sales brochure for legend of the terms and abbreviations shown in the floor plans.
- The residential properties shown on this floor plan are treated as investment properties, and are not intended for sale by the Vendor.

備註：

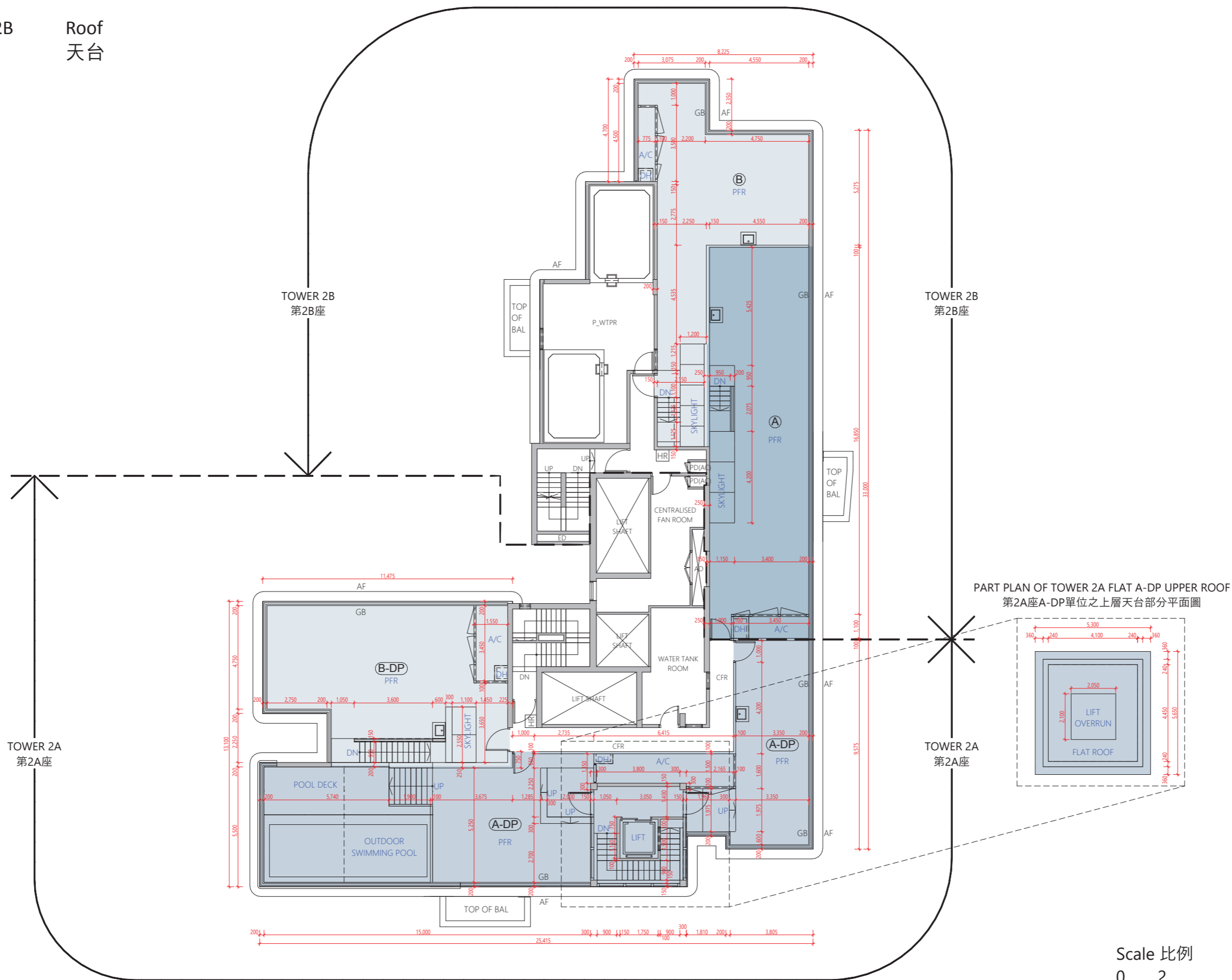
- 樓面平面圖所列數字為以毫米標示之建築結構尺寸，並以四捨五入至整數。
- 有關紓緩噪音措施之詳情，請參閱本售樓說明書的有關資料章節。
- 樓面平面圖中顯示之名詞及簡稱之圖例，請參閱本售樓說明書第62頁。
- 賣方將此樓面平面圖所載之住宅物業視為投資物業，並不打算提供出售。

Floor plans of residential properties in the development

發展項目的住宅物業的樓面平面圖

Tower 2A & Tower 2B
第2A座及第2B座

Roof
天台



Scale 比例

0 2 10m (米)

Remark:

The residential properties shown on this floor plan are treated as investment properties, and are not intended for sale by the Vendor.

備註：

賣方將此樓面平面圖所載之住宅物業視為投資物業，並不打算提供出售。

Floor plans of residential properties in the development

發展項目的住宅物業的樓面平面圖

Remarks applicable to the floor plans in this section:

1. There are architectural features, metal grilles and/or exposed pipes on the external walls of some of the floors. For details, please refer to the latest approved building plans and/or approved drainage plans and/or other relevant plans.
2. Common pipes exposed and /or enclosed in cladding are located at/adjacent to the balcony and utility platform and/or flat roof and/or air-conditioner platform and/or external wall of some residential properties. For details, please refer to the latest approved building plans and/or approved drainage plans and/or other relevant plans.
3. There are sunken slabs for mechanical and electrical services and/or false ceiling/bulkheads for the air-conditioning fittings and/or mechanical and electrical services at some residential properties.
4. There are exposed pipes installed in some lavatories.
5. There are pipes enclosed by the fittings and finishes in some residential properties. For details, please refer to the latest approved building plans and/or approved drainage plans and/or other relevant plans.
6. There are exposed pipes located at the upper part of some utility platforms. For details, please refer to the latest approved building plans and/or approved drainage plans and/or other relevant plans.
7. Balconies and utility platforms are non-enclosed areas.
8. There are non-structural prefabricated external walls in some residential properties. The Saleable Area as defined in the formal Agreement for Sale and Purchase of a residential property has included the non-structural prefabricated external walls and is measured from the exterior of such non-structural prefabricated external walls.
9. The ceiling height of some residential properties may vary due to structural, architectural and/or decoration design variations.
10. Symbols of fittings and fitments such as bath tub, sink, water closet, shower, sink counter, etc. in the floor plans are prepared based on the latest approved building plans and are for general indication only.

適用於本節之樓面平面圖之備註：

1. 部分樓層外牆範圍設有建築裝飾、金屬格柵及/或外露喉管，詳細資料請參考最新經批准的建築圖則及/或經批准的排水設施圖則及/或其他相關圖則。
2. 部分住宅物業的露台及工作平台及/或平台及/或空調機平台及/或外牆上/附近設有外露及/或外牆裝飾板(覆蓋板)內藏之公用喉管，詳細資料請參考最新經批准的建築圖則及/或經批准的排水設施圖則及/或其他相關圖則。
3. 部分住宅物業有用以安裝機電設備的跌級樓板及/或用以裝置空調設備及/或其他機電設備的假天花/裝飾橫樑。
4. 部分洗手間內裝有外露喉管。
5. 部分住宅物業於裝置及裝修物料內設有喉管。詳細資料請參考最新經批准的建築圖則及/或經批准的排水設施圖則及/或其他相關圖則。
6. 部分工作平台上方裝有外露喉管。詳細資料請參考最新經批准的建築圖則及/或經批准的排水設施圖則及/或其他相關圖則。
7. 露台及工作平台為不可封閉的地方。
8. 部分住宅物業有非結構預製外牆。正式買賣合約之實用面積之計算包括非結構預製外牆，並由非結構預製外牆之外圍起計。
9. 部分住宅物業之天花高度將會因應結構、建築設計及/或裝修設計上的需要有所差異。
10. 樓面平面圖上所顯示的裝置符號，如浴缸、洗滌盆、坐廁、花灑、洗滌盆櫃等乃按最新的經批准的建築圖則繪製，只作一般示意用途。

Legend for floor plans of residential properties

住宅物業平面圖的圖例

AD	Air Duct	風喉槽	KIT	Kitchen	廚房
A/C	Air-conditioner Platform	空調機平台	LAV	Lavatory	洗手間
AF	Architectural Feature	建築裝飾	LIFT	Lift	升降機
AP	Acoustic Panel	隔音板	LIFT LOBBY	Lift Lobby	升降機大堂
BAL	Balcony	露台	LIFT OVERRUN	Lift Overrun	升降機緩衝
BATH	Bathroom	浴室	LIFT SHAFT	Lift Shaft	升降機槽
BATH1	Bathroom 1	浴室1	LIV / DIN	Living / Dining Room	客/飯廳
BATH2	Bathroom 2	浴室2	M.BATH	Master Bathroom	主人浴室
BATH3	Bathroom 3	浴室3	MBR	Master Bedroom	主人睡房
BATH4	Bathroom 4	浴室4	O. KIT	Open Kitchen	開放式廚房
BR	Bedroom	睡房	OUTDOOR SWIMMING POOL	Outdoor Swimming Pool	室外游泳池
BR1	Bedroom 1	睡房1	PANTRY	Pantry	茶水間
BR2	Bedroom 2	睡房2	PD	Pipe Duct	管道槽
BR3	Bedroom 3	睡房3	PD (AC)	Pipe Duct (Air-conditioning)	管道槽(空調)
BR4	Bedroom 4	睡房4	PD (FS)	Pipe Duct (Fire Services)	管道槽(消防)
CABD HEADEND ROOM	Communal Antenna Broadcast Distribution Headend Room	公共天線系統房	PFR	Private Flat Roof	私人平台
CANOPY	Canopy	簷篷	POOL DECK	Pool Deck	游泳池平台
CENTRALISED FAN ROOM	Centralised Fan Room	中央風機房	P_WTPR	Potable Water Tank and Pump Room	食水缸及泵房
CFR	Common Flat Roof	公用平台	PÖW	Powder Room	化妝室
DH	Dog House	室外管道房	PUMP ROOM	Pump Room	泵房
DN	Down	往下	RSMRR	Refuse Storage and Material Recovery Room	垃圾及物料回收房
ED	Electrical Duct	電線槽	SHOWER	Shower	淋浴間
EMC	Electric Meter Cabinet	電錶箱	SKYLIGHT	Skylight	天窗
EMR	Electric Meter Room	電錶房	STUDY	Study	書房
ELR	Electric Room	電線房	TD	Telephone Duct	電話槽
EAD	Exhaust Air Duct	抽風槽	TOP OF BAL	Top of Balcony	露台之上方
EX.PD	External Pipe Duct	室外管道槽	TOP OF PD	Top of Pipe Duct	管道槽之上方
F LIFT LOBBY	Fire Services Lift Lobby	消防升降機大堂	U	Utility Platform	工作平台
F_WTPR	Flushing Water Tank and Pump Room	沖廁水缸及泵房	UP	Up	往上
FLAT ROOF	Flat Roof	平台	UTR	Utility Room	工作房
GB	Glass Balustrade	玻璃圍欄	VOID	Void	中空
HR	Hose Reel	消防喉轆	WATER TANK ROOM	Water Tank Room	水缸房
JACUZZI	Jacuzzi	按摩池	WMC	Water Meter Cabinet	水錶箱