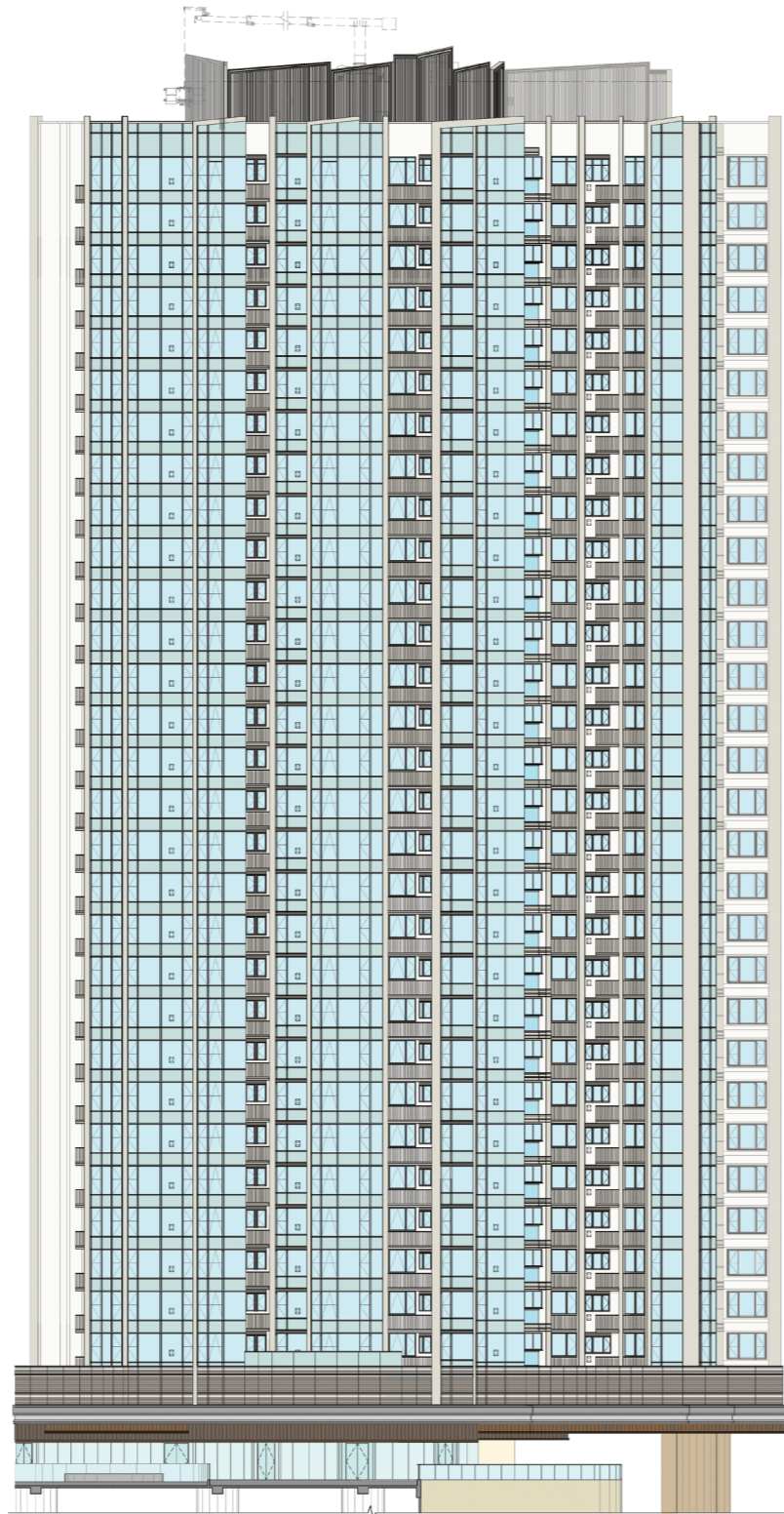
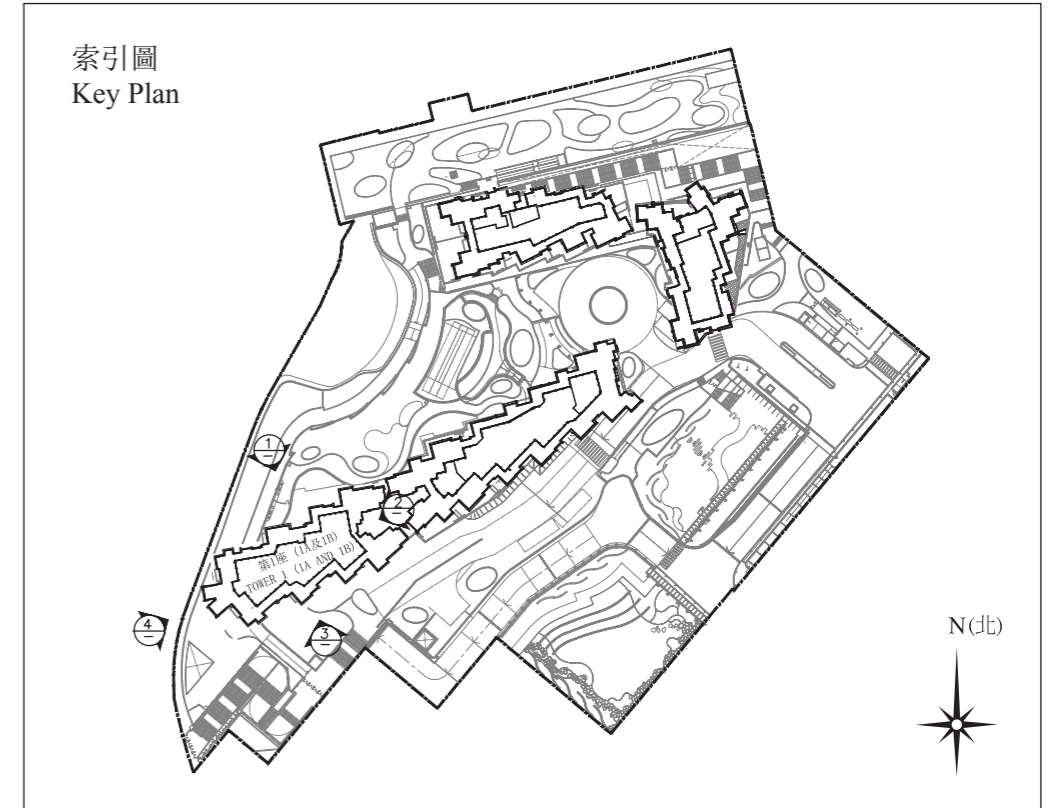


第1座 (1A及1B)
Tower 1 (1A and 1B)



立面圖1
Elevation Plan 1

索引圖
Key Plan



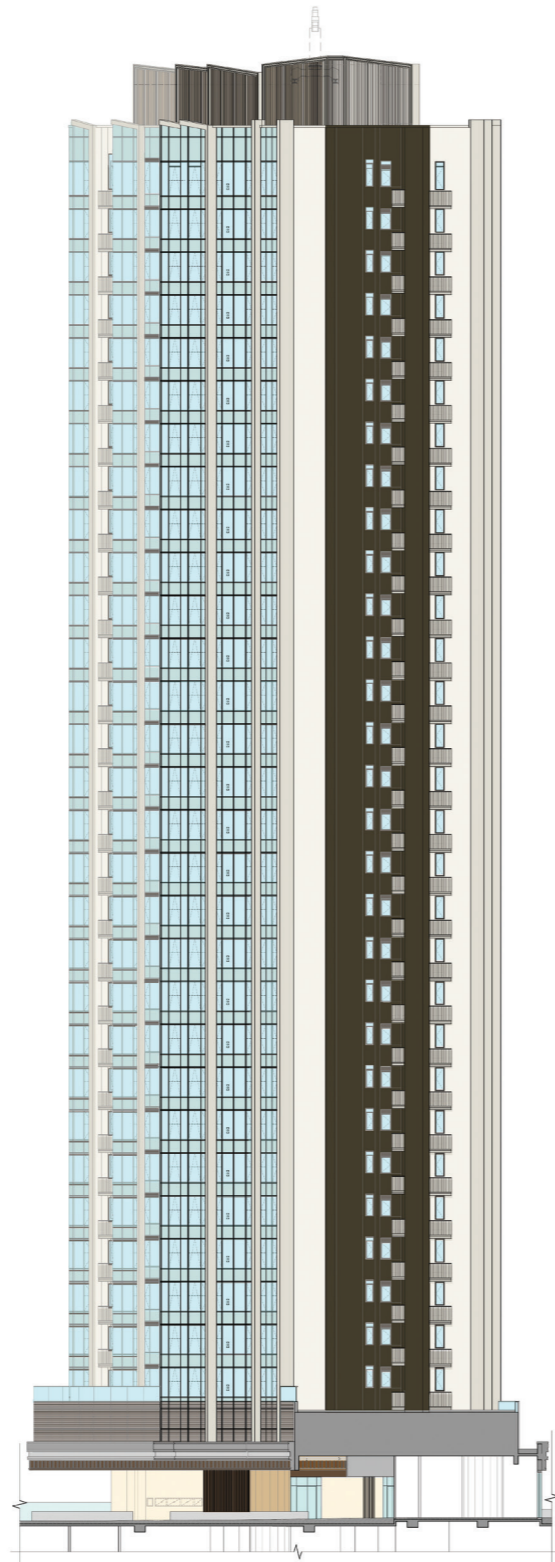
期數的認可人士已證明該等立面：

- (1) 以2023年4月27日、2023年9月15日及2023年12月21日的情況為準的期數經批准的建築圖則為基礎擬備；及
- (2) 大致上與期數的外觀一致。

It has been certified by the Authorized Person for the Phase that the elevations:

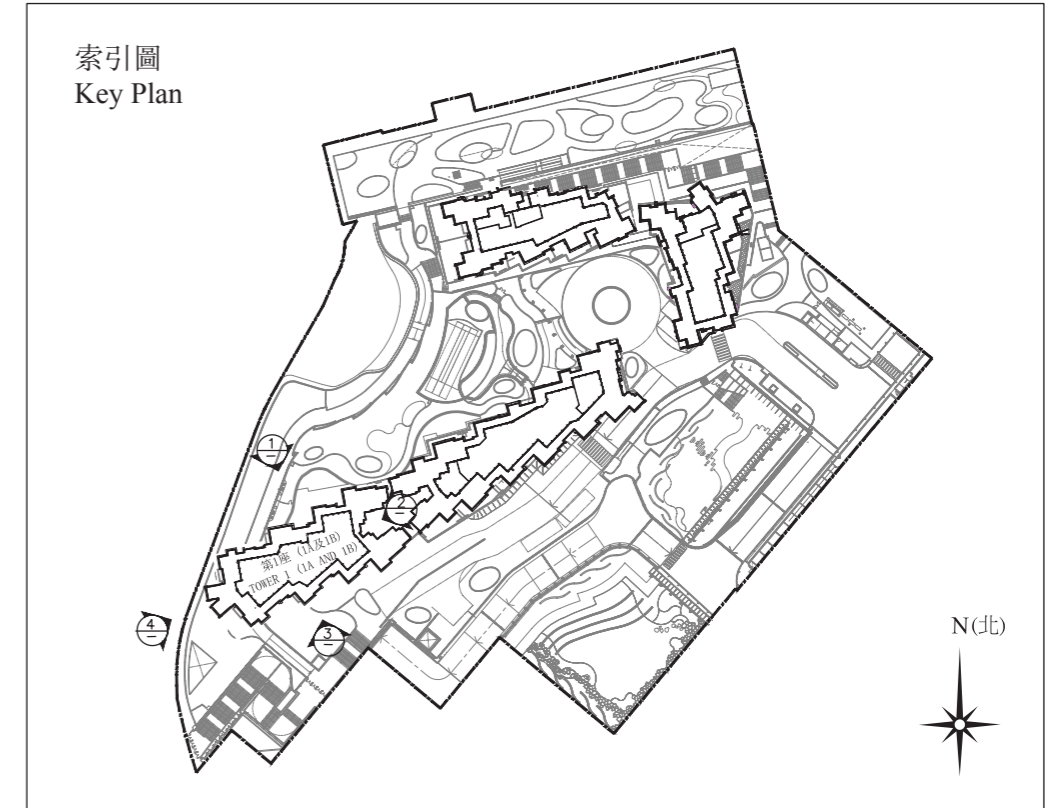
- (1) are prepared on the basis of the approved building plans for the Phase as of 27th April 2023, 15th September 2023 and 21st December 2023; and
- (2) are in general accordance with the outward appearance of the Phase.

第1座 (1A及1B)
Tower 1 (1A and 1B)



立面圖2
Elevation Plan 2

索引圖
Key Plan



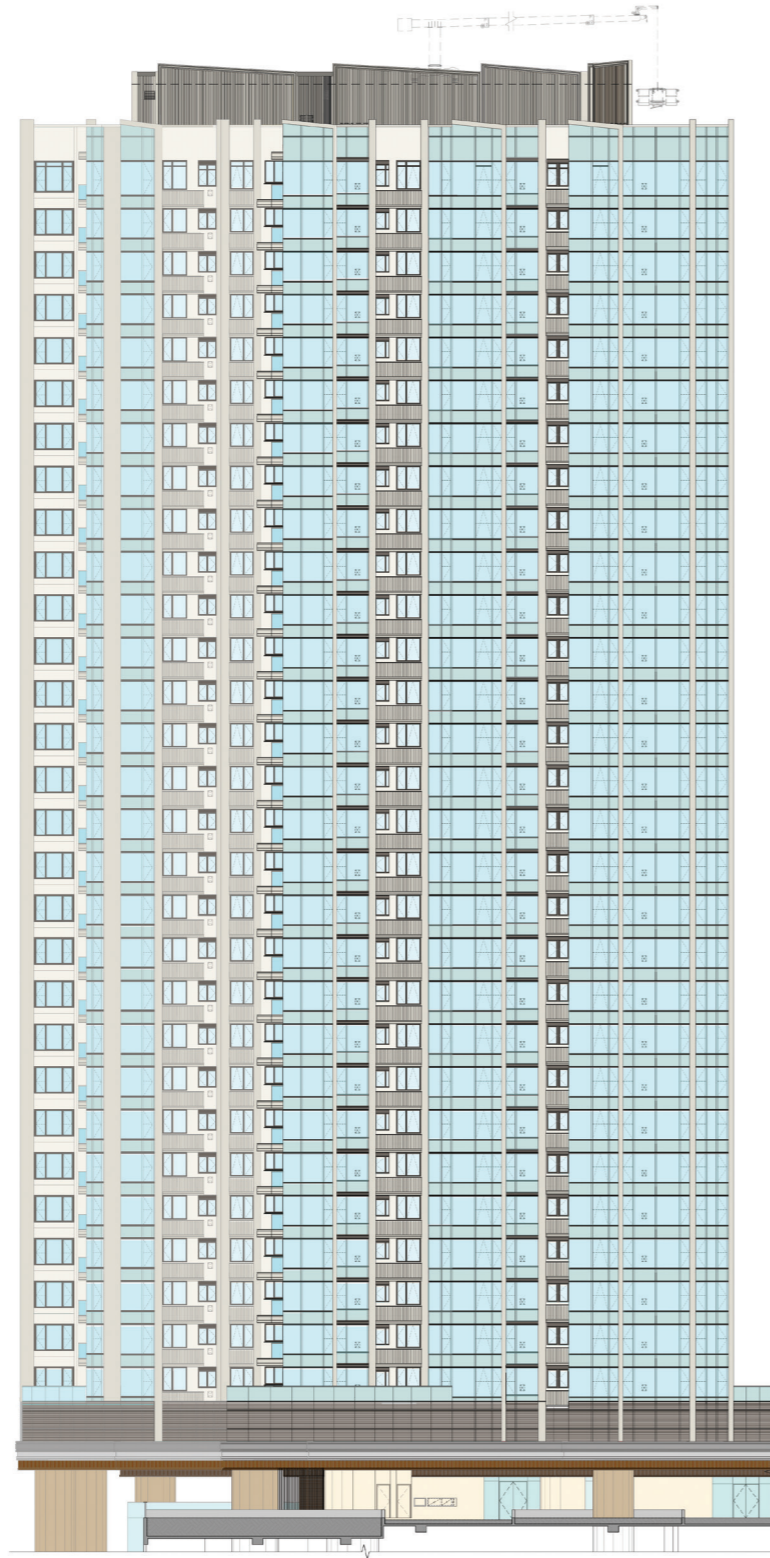
期數的認可人士已證明該等立面：

- (1) 以2023年4月27日、2023年9月15日及2023年12月21日的情況為準的期數經批准的建築圖則為基礎擬備；及
- (2) 大致上與期數的外觀一致。

It has been certified by the Authorized Person for the Phase that the elevations:

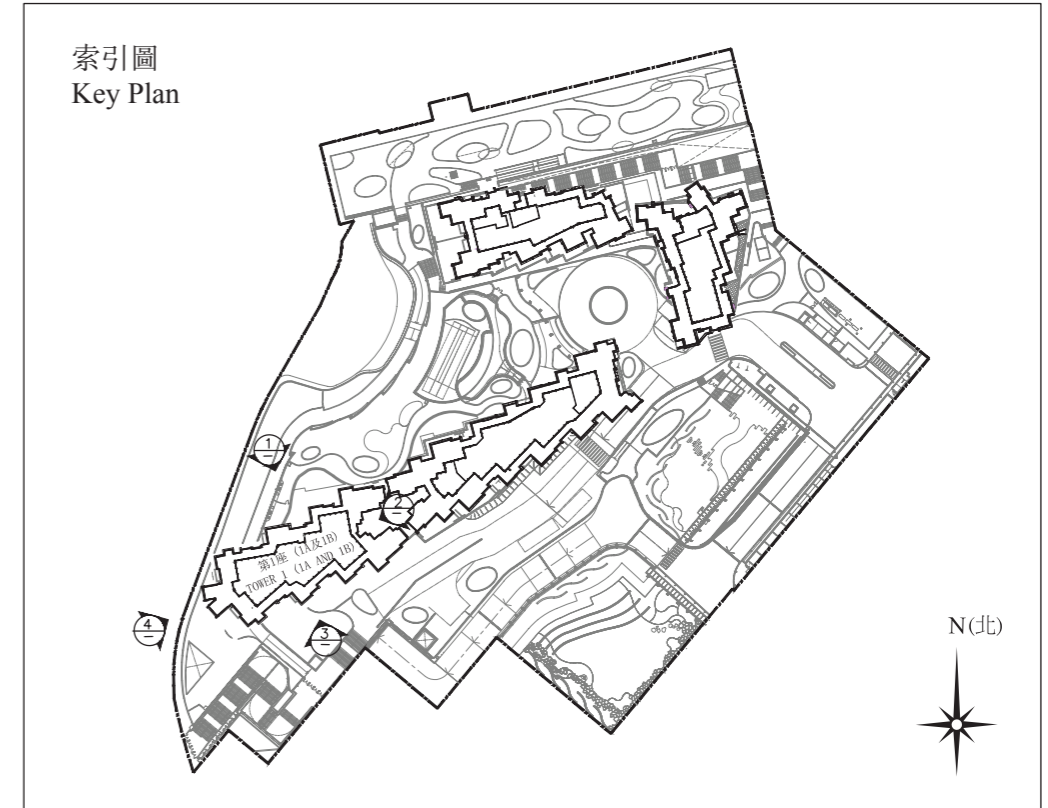
- (1) are prepared on the basis of the approved building plans for the Phase as of 27th April 2023, 15th September 2023 and 21st December 2023; and
- (2) are in general accordance with the outward appearance of the Phase.

第1座 (1A及1B)
Tower 1 (1A and 1B)



立面圖3
Elevation Plan 3

索引圖
Key Plan



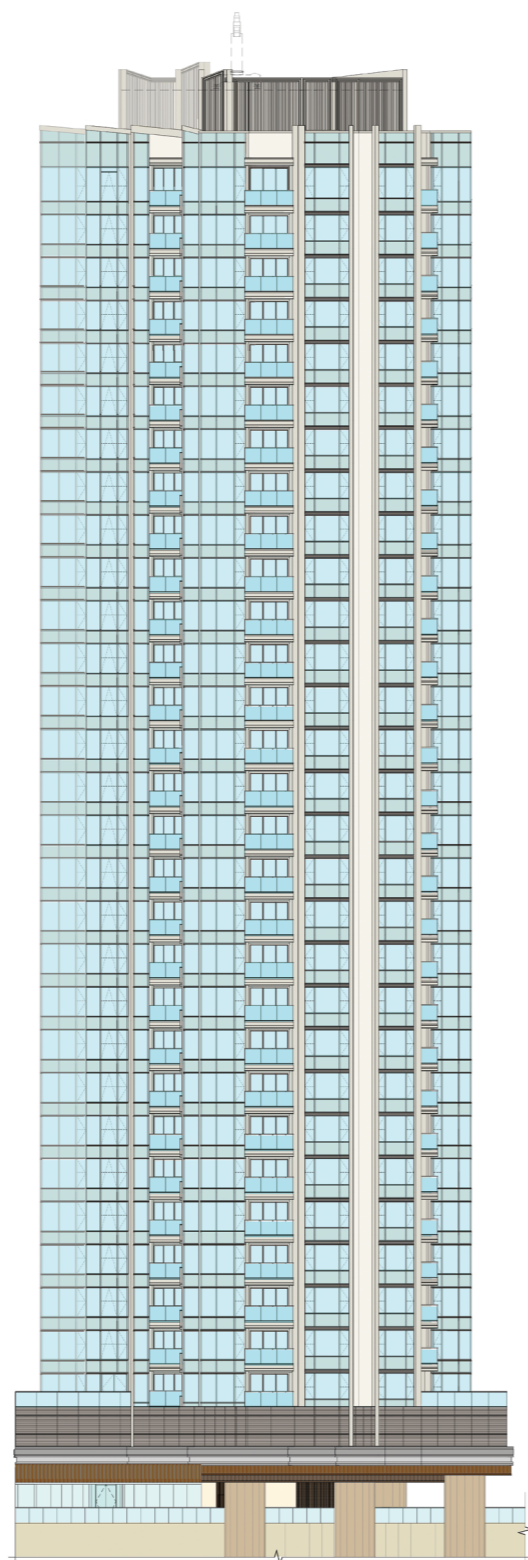
期數的認可人士已證明該等立面：

- (1) 以2023年4月27日、2023年9月15日及2023年12月21日的情況為準的期數經批准的建築圖則為基礎擬備；及
- (2) 大致上與期數的外觀一致。

It has been certified by the Authorized Person for the Phase that the elevations:

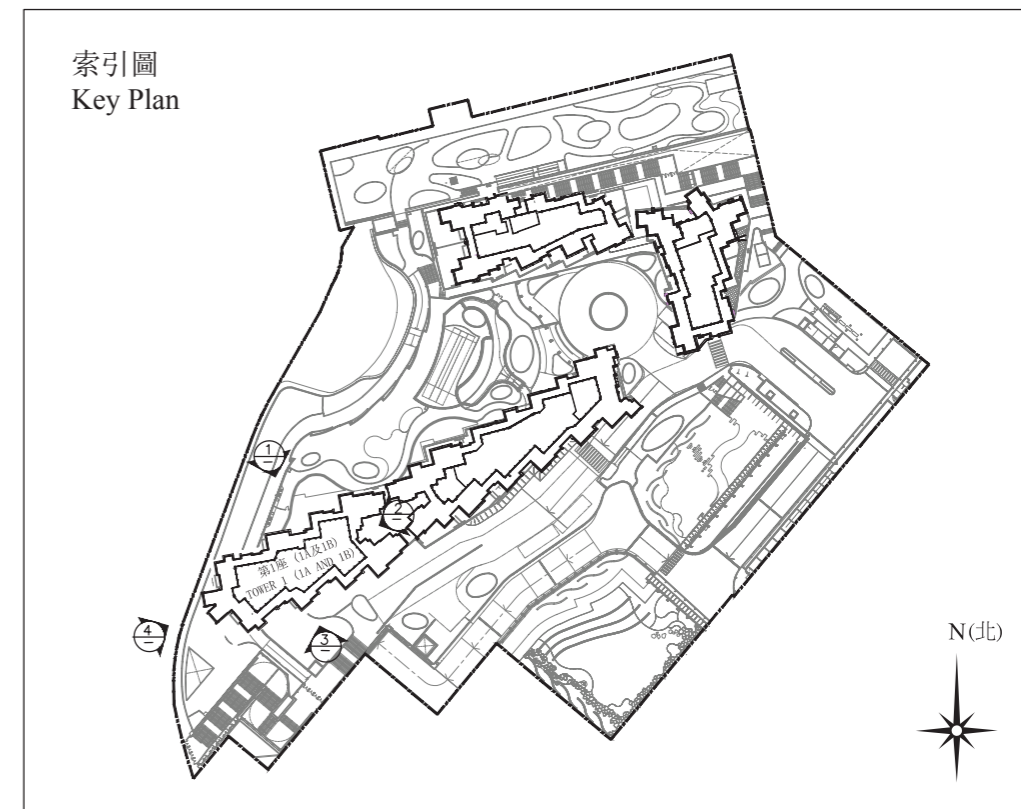
- (1) are prepared on the basis of the approved building plans for the Phase as of 27th April 2023, 15th September 2023 and 21st December 2023; and
- (2) are in general accordance with the outward appearance of the Phase.

第1座 (1A及1B)
Tower 1 (1A and 1B)



立面圖4
Elevation Plan 4

索引圖
Key Plan



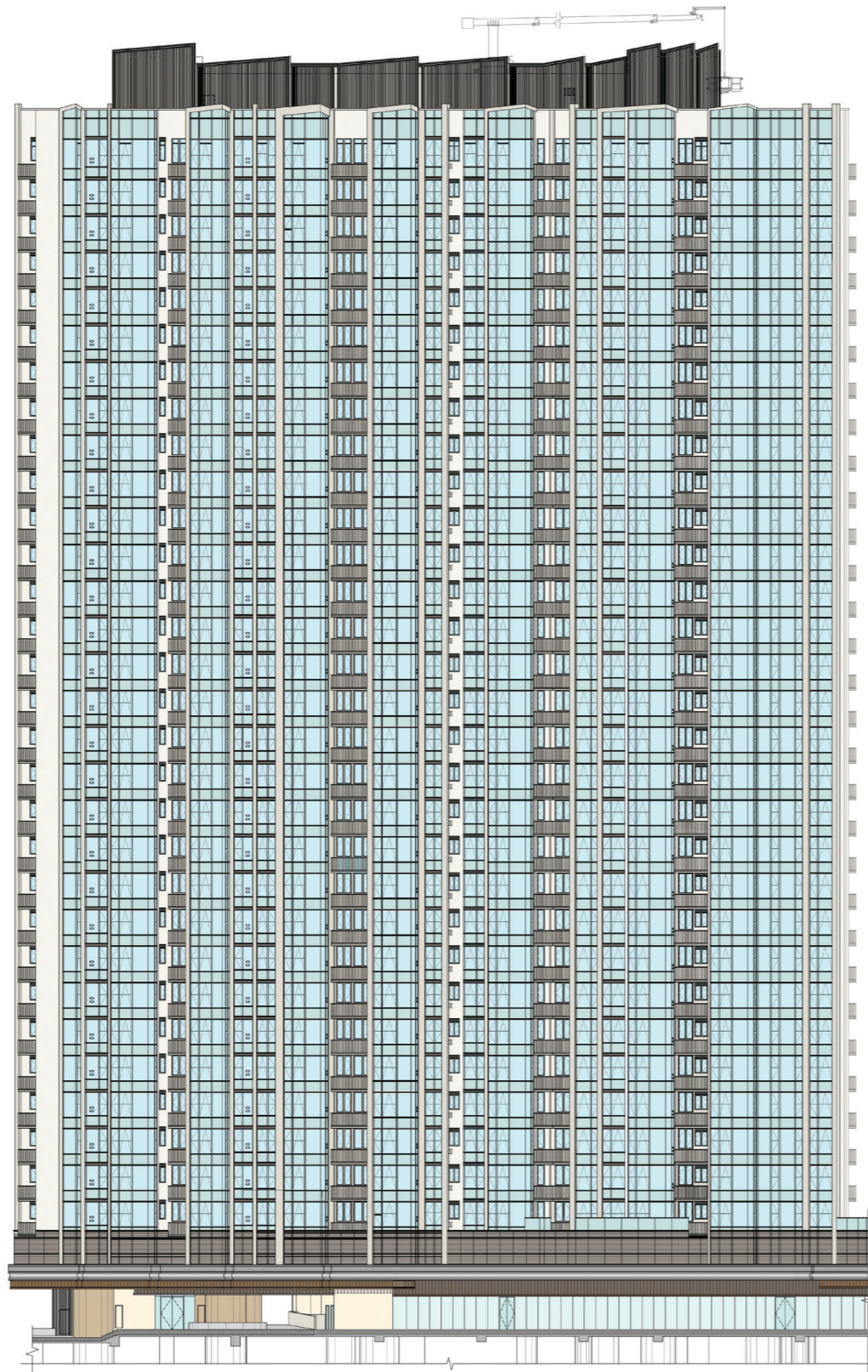
期數的認可人士已證明該等立面：

- (1) 以2023年4月27日、2023年9月15日及2023年12月21日的情況為準的期數經批准的建築圖則為基礎擬備；及
- (2) 大致上與期數的外觀一致。

It has been certified by the Authorized Person for the Phase that the elevations:

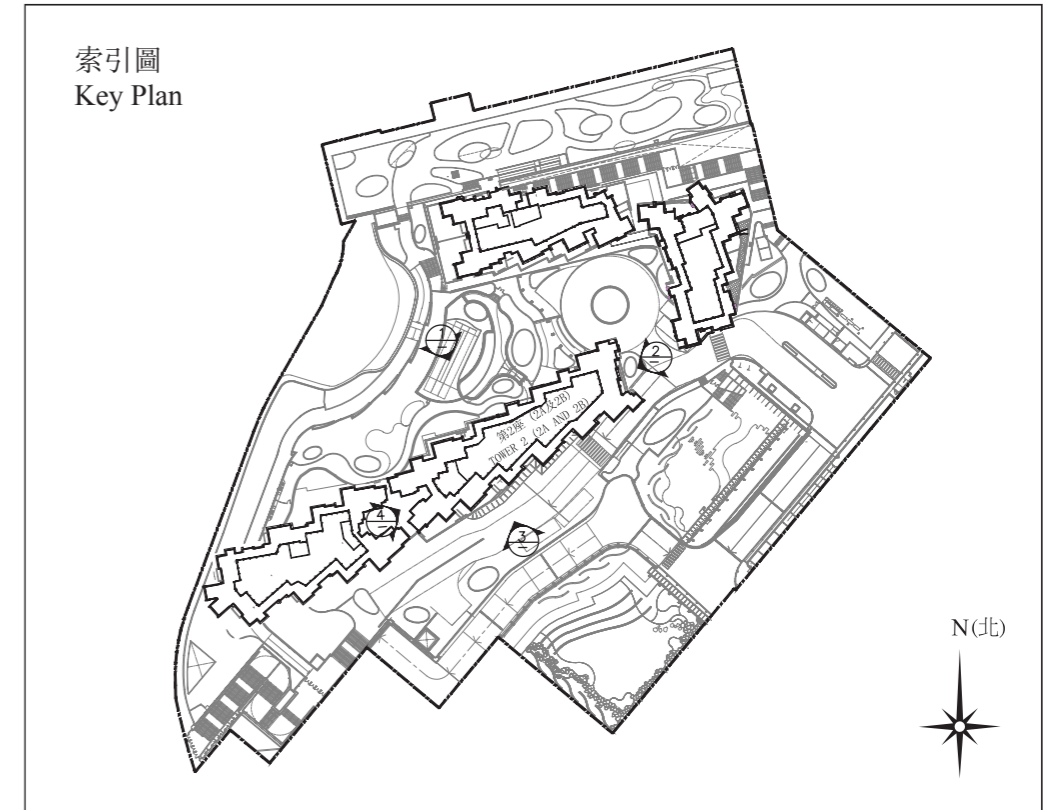
- (1) are prepared on the basis of the approved building plans for the Phase as of 27th April 2023, 15th September 2023 and 21st December 2023; and
- (2) are in general accordance with the outward appearance of the Phase.

第2座 (2A及2B)
Tower 2 (2A and 2B)



立面圖1
Elevation Plan 1

索引圖
Key Plan



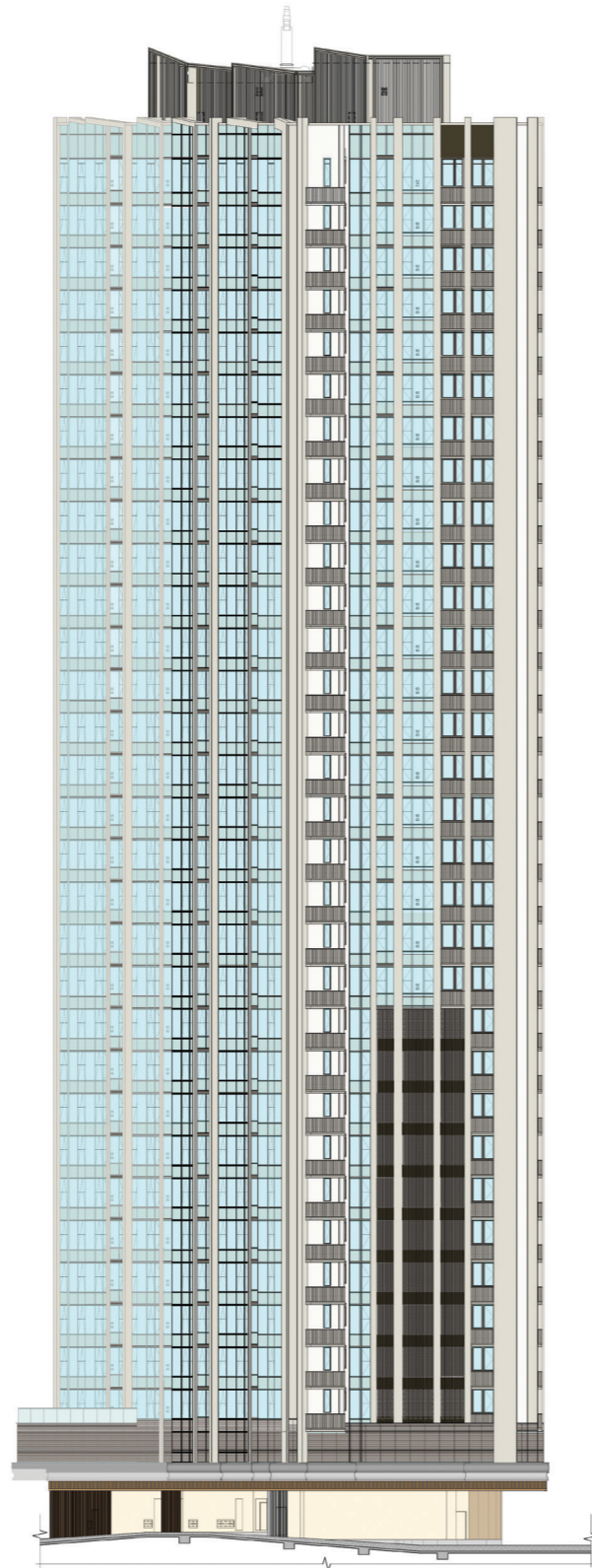
期數的認可人士已證明該等立面：

- (1) 以2023年4月27日、2023年9月15日及2023年12月21日的情況為準的期數經批准的建築圖則為基礎擬備；及
- (2) 大致上與期數的外觀一致。

It has been certified by the Authorized Person for the Phase that the elevations:

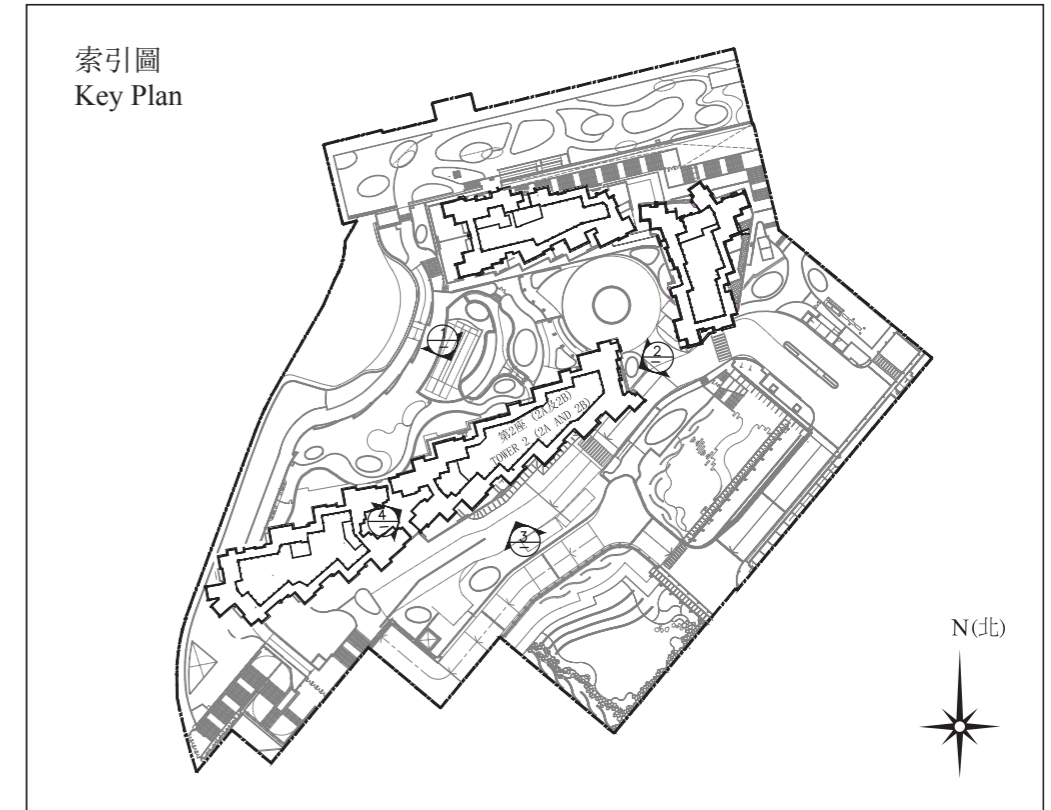
- (1) are prepared on the basis of the approved building plans for the Phase as of 27th April 2023, 15th September 2023 and 21st December 2023; and
- (2) are in general accordance with the outward appearance of the Phase.

第2座 (2A及2B)
Tower 2 (2A and 2B)



立面圖2
Elevation Plan 2

索引圖
Key Plan



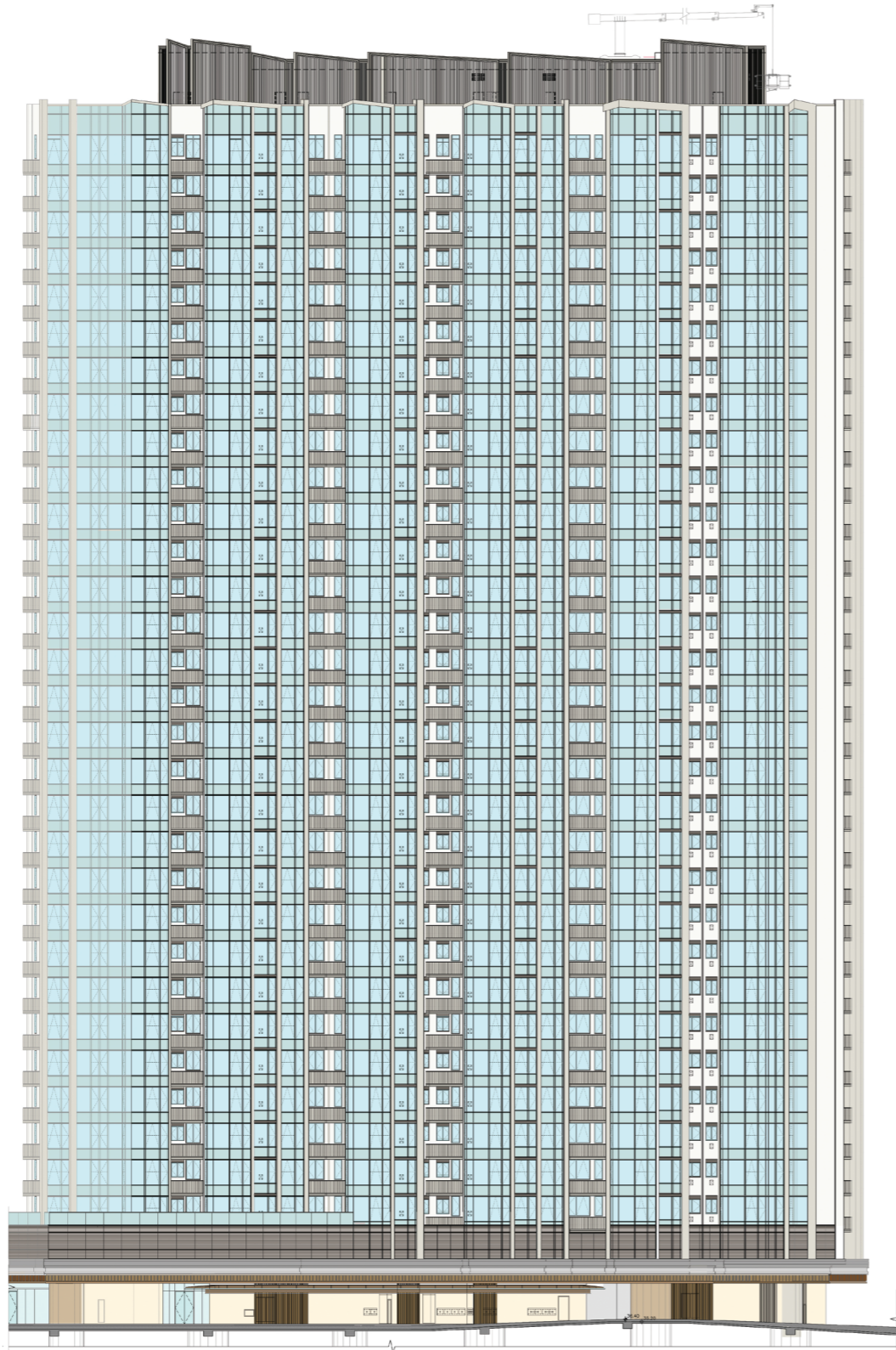
期數的認可人士已證明該等立面：

- (1) 以2023年4月27日、2023年9月15日及2023年12月21日的情況為準的期數經批准的建築圖則為基礎擬備；及
- (2) 大致上與期數的外觀一致。

It has been certified by the Authorized Person for the Phase that the elevations:

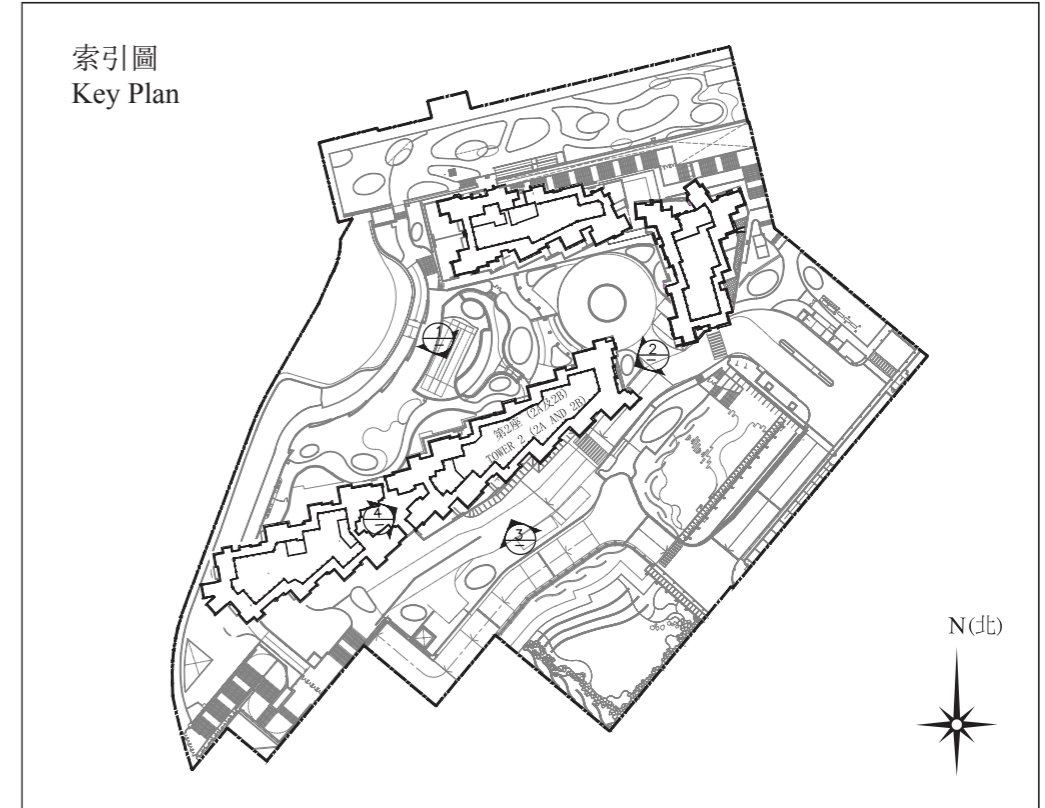
- (1) are prepared on the basis of the approved building plans for the Phase as of 27th April 2023, 15th September 2023 and 21st December 2023; and
- (2) are in general accordance with the outward appearance of the Phase.

第2座 (2A及2B)
Tower 2 (2A and 2B)



立面圖3
Elevation Plan 3

索引圖
Key Plan



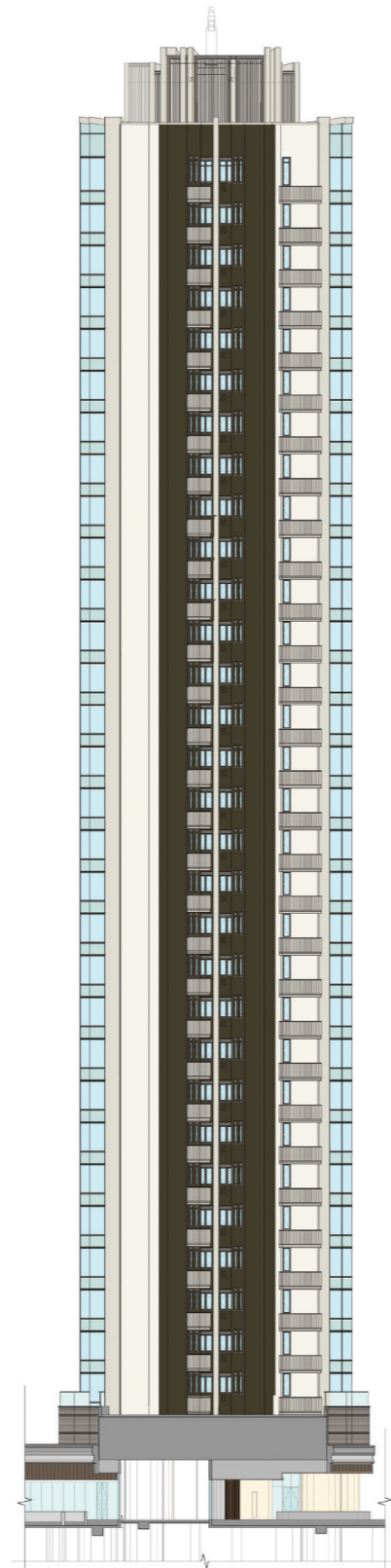
期數的認可人士已證明該等立面：

- (1) 以2023年4月27日、2023年9月15日及2023年12月21日的情況為準的期數經批准的建築圖則為基礎擬備；及
- (2) 大致上與期數的外觀一致。

It has been certified by the Authorized Person for the Phase that the elevations:

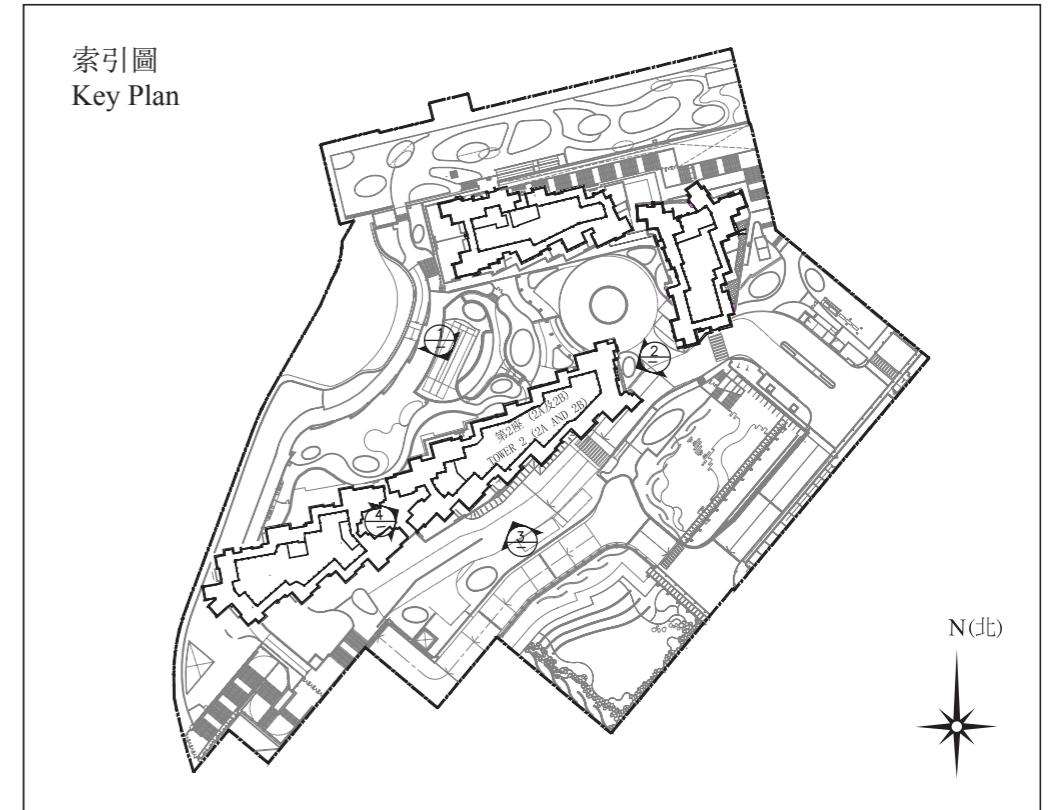
- (1) are prepared on the basis of the approved building plans for the Phase as of 27th April 2023, 15th September 2023 and 21st December 2023; and
- (2) are in general accordance with the outward appearance of the Phase.

第2座 (2A及2B)
Tower 2 (2A and 2B)



立面圖4
Elevation Plan 4

索引圖
Key Plan



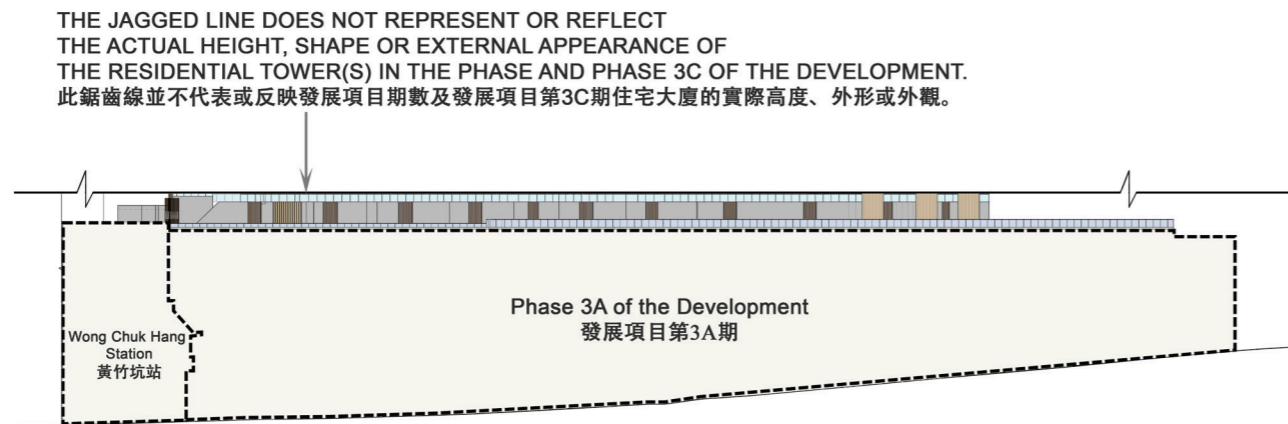
期數的認可人士已證明該等立面：

- (1) 以2023年4月27日、2023年9月15日及2023年12月21日的情況為準的期數經批准的建築圖則為基礎擬備；及
- (2) 大致上與期數的外觀一致。

It has been certified by the Authorized Person for the Phase that the elevations:

- (1) are prepared on the basis of the approved building plans for the Phase as of 27th April 2023, 15th September 2023 and 21st December 2023; and
- (2) are in general accordance with the outward appearance of the Phase.

平台立面圖1
Podium Elevation Plan 1



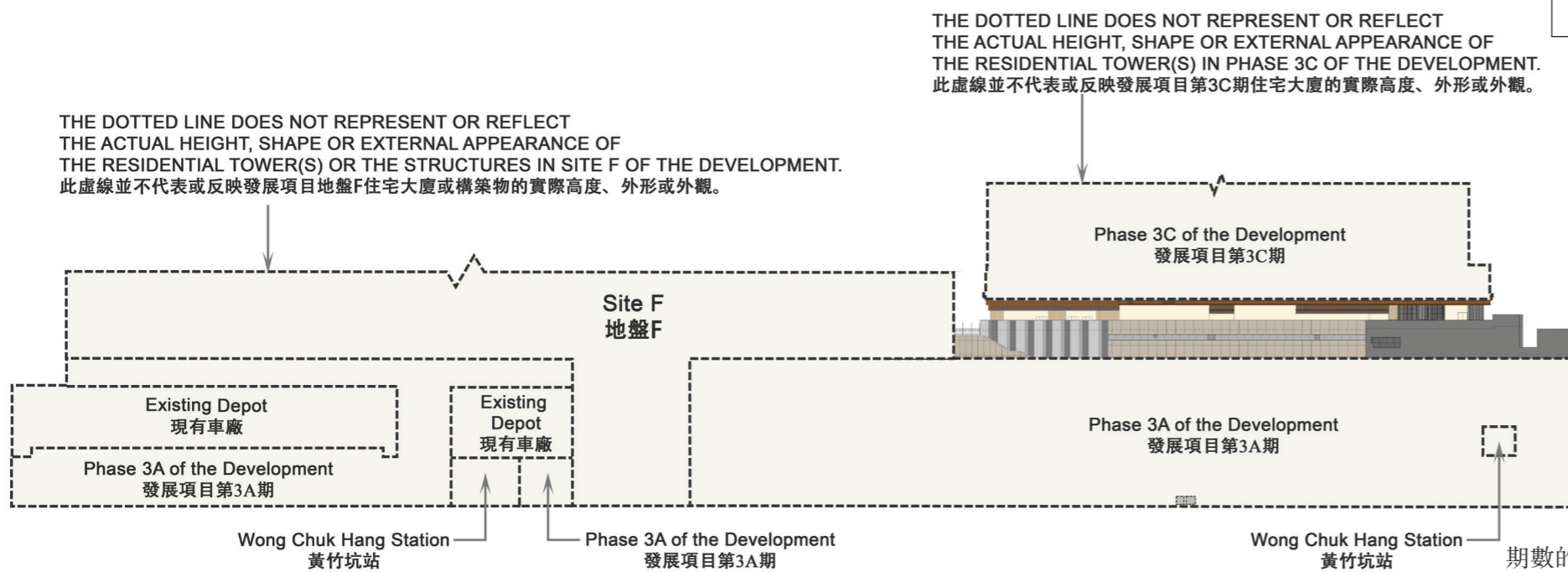
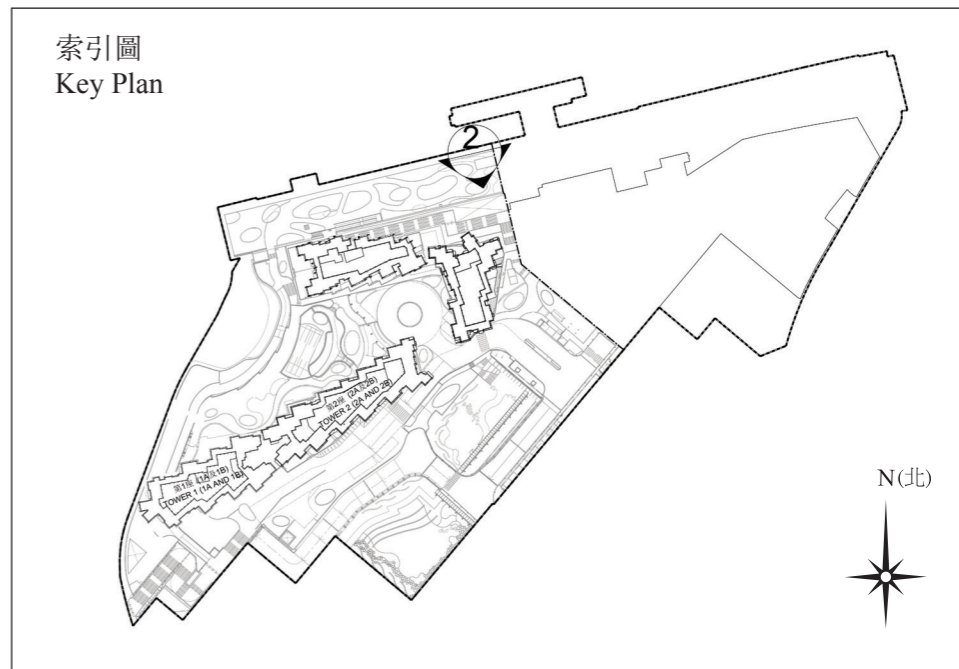
期數的認可人士已證明該等立面：

- (1) 以2023年4月27日、2023年9月15日及2023年12月21日的情況為準的期數經批准的建築圖則為基礎擬備；及
- (2) 大致上與期數的外觀一致。

It has been certified by the Authorized Person for the Phase that the elevations:

- (1) are prepared on the basis of the approved building plans for the Phase as of 27th April 2023, 15th September 2023 and 21st December 2023; and
- (2) are in general accordance with the outward appearance of the Phase.

平台立面圖2
Podium Elevation Plan 2



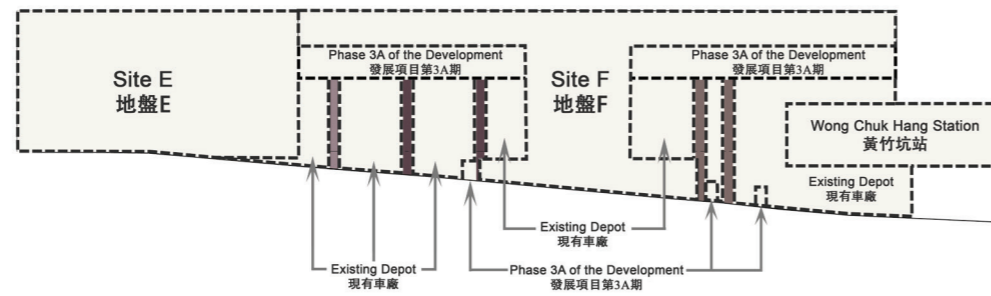
期數的認可人士已證明該等立面：

- (1) 以2023年4月27日、2023年9月15日及2023年12月21日的情況為準的期數經批准的建築圖則為基礎擬備；及
- (2) 大致上與期數的外觀一致。

It has been certified by the Authorized Person for the Phase that the elevations:

- (1) are prepared on the basis of the approved building plans for the Phase as of 27th April 2023, 15th September 2023 and 21st December 2023; and
- (2) are in general accordance with the outward appearance of the Phase.

平台立面圖3
Podium Elevation Plan 3



期數的認可人士已證明該等立面：

- (1) 以2023年4月27日、2023年9月15日及2023年12月21日的情況為準的期數經批准的建築圖則為基礎擬備；及
- (2) 大致上與期數的外觀一致。

It has been certified by the Authorized Person for the Phase that the elevations:

- (1) are prepared on the basis of the approved building plans for the Phase as of 27th April 2023, 15th September 2023 and 21st December 2023; and
- (2) are in general accordance with the outward appearance of the Phase.