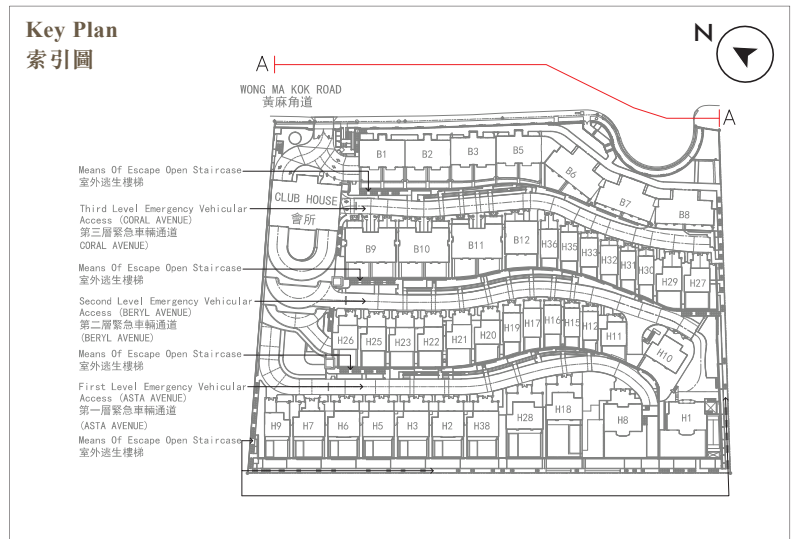
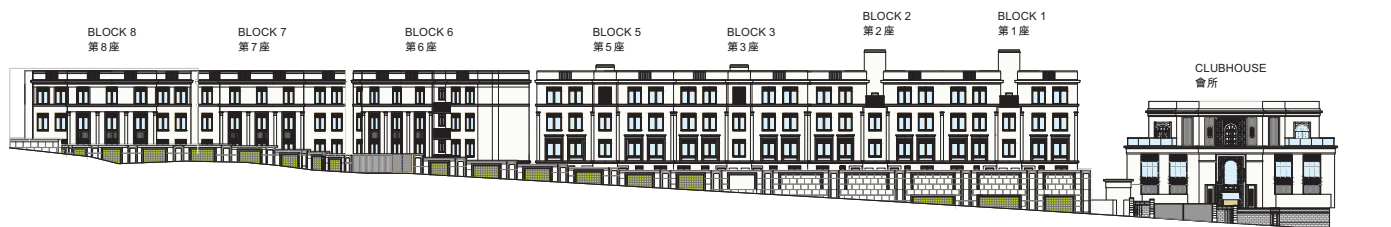


20. ELEVATION PLAN 立面圖

Elevation Plan A 立面圖 A



B = Block = 座 H = House = 洋房



The Authorized Person for the Development has certified that the elevations shown on this plan :

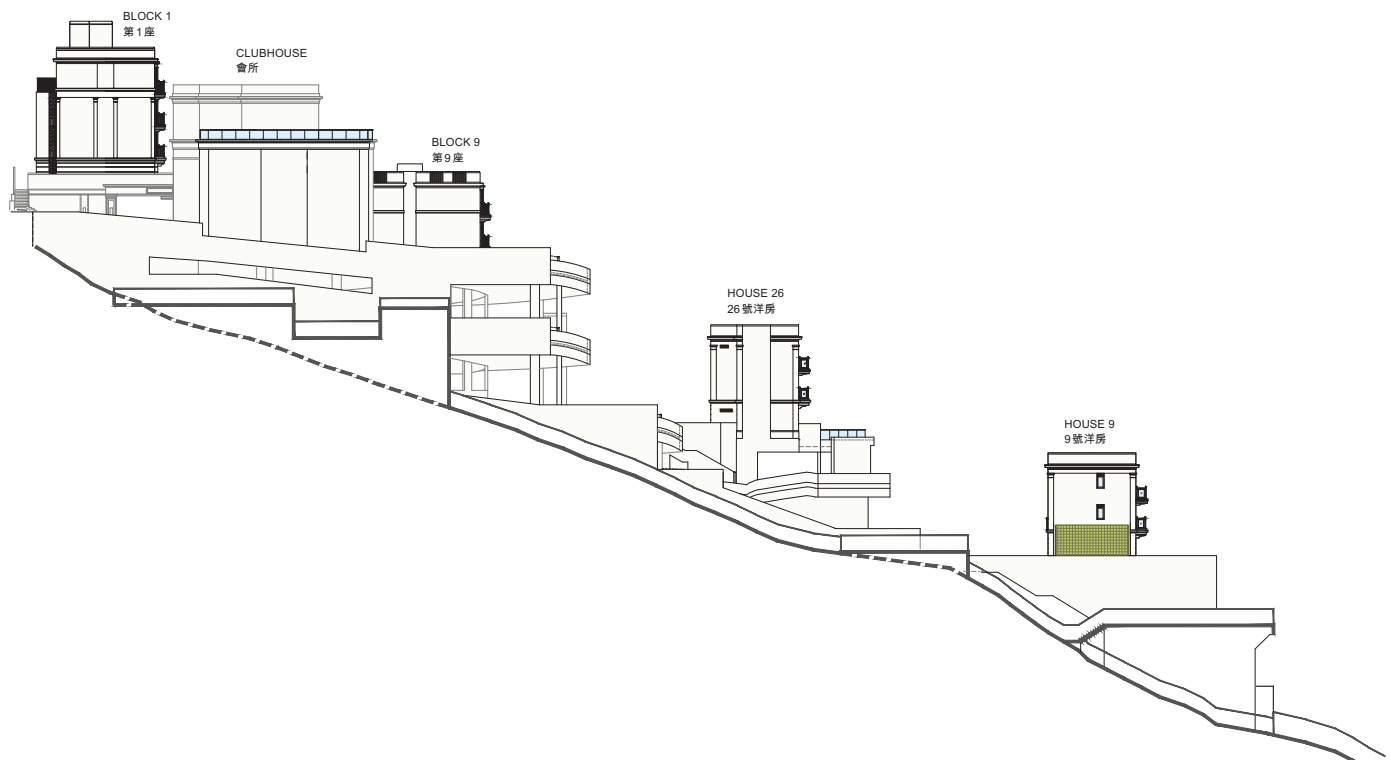
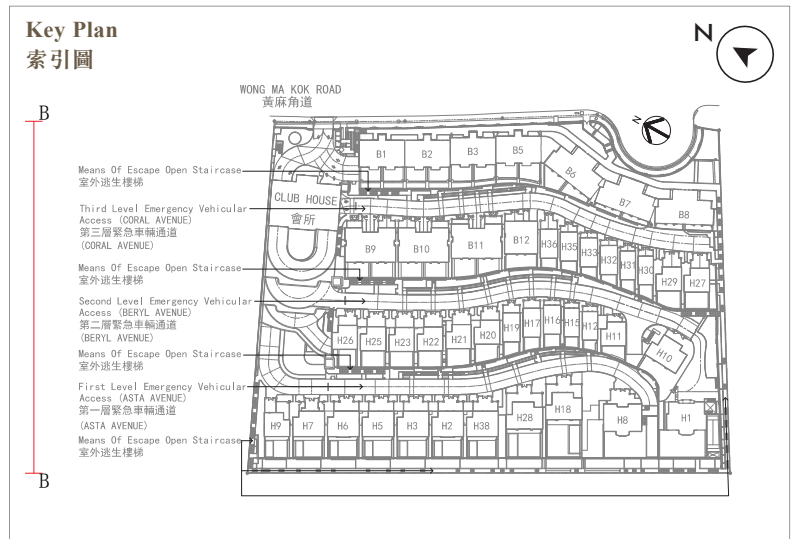
- are prepared on the basis of the approved building plans for the Development as of 8 December 2022 and 6 June 2023; and
- are in general accordance with the outward appearance of the Development.

發展項目的認可人士已證明本圖所顯示的立面：

- 以 2022 年 12 月 8 日及 2023 年 6 月 6 日的情況為準的發展項目的經批准的建築圖則為基礎擬備；及
- 大致上與發展項目的外觀一致。

20. ELEVATION PLAN 立面圖

Elevation Plan B 立面圖 B



The Authorized Person for the Development has certified that the elevations shown on this plan :

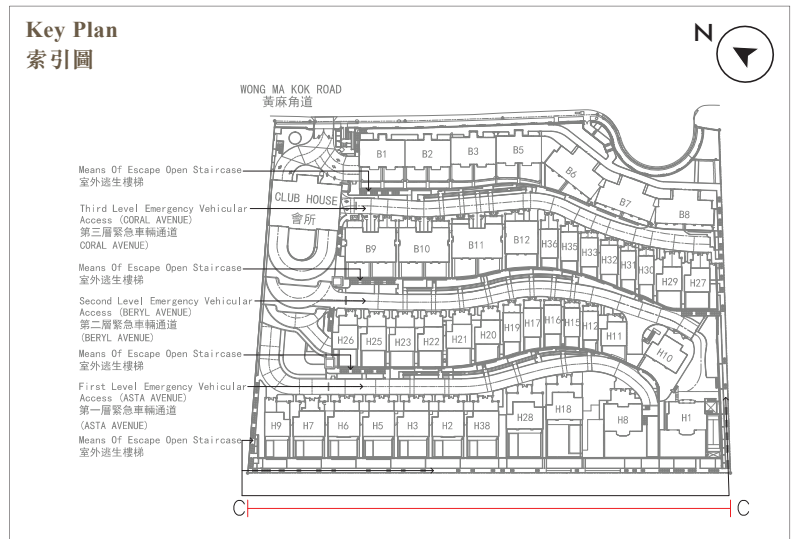
1. are prepared on the basis of the approved building plans for the Development as of 8 December 2022 and 6 June 2023; and
2. are in general accordance with the outward appearance of the Development.

發展項目的認可人士已證明本圖所顯示的立面：

1. 以 2022 年 12 月 8 日及 2023 年 6 月 6 日的情況為準的發展項目的經批准的建築圖則為基礎擬備；及
2. 大致上與發展項目的外觀一致。

20. ELEVATION PLAN 立面圖

Elevation Plan C 立面圖 C



B = Block = 座 H = House = 洋房



The Authorized Person for the Development has certified that the elevations shown on this plan :

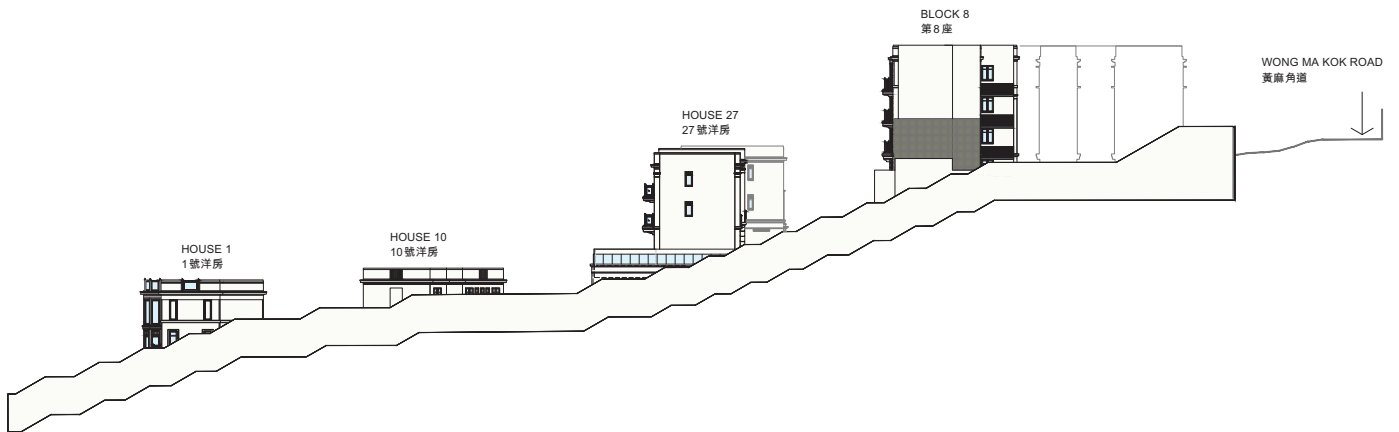
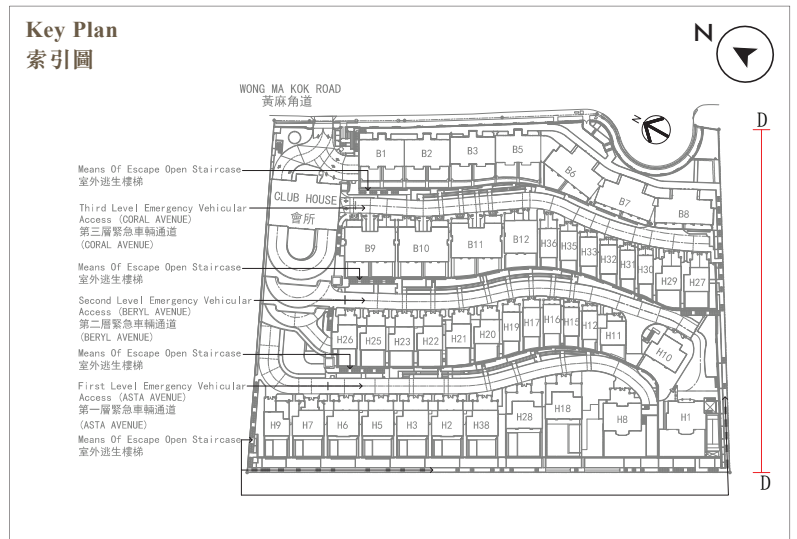
1. are prepared on the basis of the approved building plans for the Development as of 8 December 2022 and 6 June 2023; and
2. are in general accordance with the outward appearance of the Development.

發展項目的認可人士已證明本圖所顯示的立面：

1. 以 2022 年 12 月 8 日及 2023 年 6 月 6 日的情況為準的發展項目的經批准的建築圖則為基礎擬備；及
2. 大致上與發展項目的外觀一致。

20. ELEVATION PLAN 立面圖

Elevation Plan D 立面圖 D



The Authorized Person for the Development has certified that the elevations shown on this plan :

1. are prepared on the basis of the approved building plans for the Development as of 8 December 2022 and 6 June 2023; and
2. are in general accordance with the outward appearance of the Development.

發展項目的認可人士已證明本圖所顯示的立面：

1. 以 2022 年 12 月 8 日及 2023 年 6 月 6 日的情況為準的發展項目的經批准的建築圖則為基礎擬備；及
2. 大致上與發展項目的外觀一致。

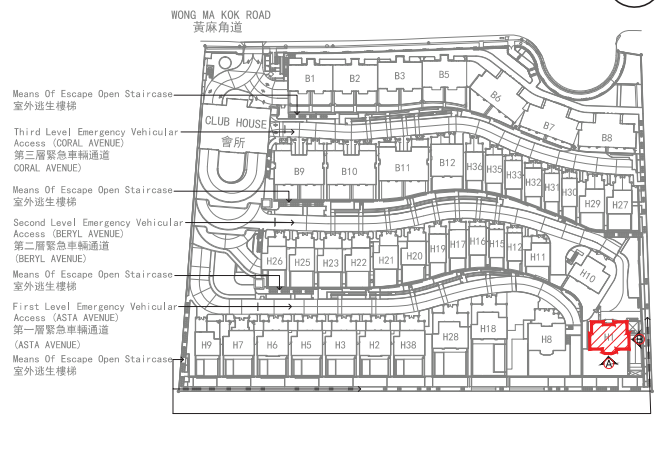
20. ELEVATION PLAN 立面圖

House 1 1號洋房

Elevation Plan A (As Per Approved General Building Plan)
立面圖 A (根據批准建築圖則)



Key Plan
索引圖



B = Block = 座 H = House = 洋房

Elevation Plan A (Latest Elevation Plan)
立面圖 A (現狀立面圖)



Elevation Plan B
立面圖 B



Authorized Person for the Development has certified that the elevations shown on the plans :-

- are prepared on the basis of the approved Building Plans for the Development as of 8 December 2022 and 6 June, 2023; and
- are in general accordance with the outward appearance of the Development.

Notes:

- Certain part of House 1 has been altered by way of minor works, designated exempted works, or exempted works under the Buildings Ordinance after completion of the Development, the latest condition of which is shown on the relevant elevation plan showing latest elevation. The alteration works are as follows:
 - Alternation of protective barrier.
- Please refer to same page of this sales brochure in studying items of minor works, designated exempted works or exempted works under the Buildings Ordinance made in this unit as indicated with blue wavy line ().

發展項目的認可人士已證明此等圖顯示的立面:-

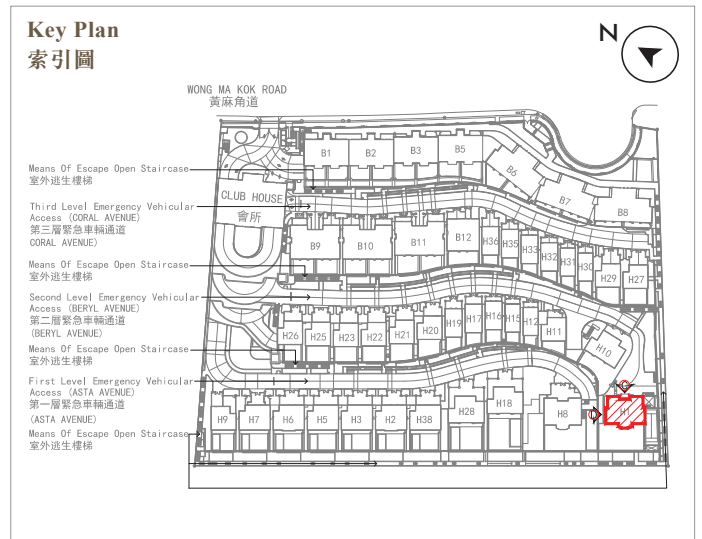
- 以2022年12月8日及2023年6月6日的情況為準的發展項目的經批准的建築圖則為基礎擬備；及
- 大致上與發展項目的外觀一致。

備註：

- 1號洋房某些部份因在發展項目落成後進行小型工程、指定豁免工程或獲《建築物條例》豁免的工程而有所改動，現狀請參閱有關現狀立面圖。該等改動如下：
 - 改動防護欄障。
- 請參閱本售樓說明書本頁以協助閱讀本單位以藍色曲線 () 顯示之有關已完成的小型工程、指定豁免工程或獲《建築物條例》豁免的工程。

20. ELEVATION PLAN
立面圖

House 1
1號洋房



B = Block = 座 H = House = 洋房

Elevation Plan C
立面圖 C



Elevation Plan D
立面圖 D



Authorized Person for the Development has certified that the elevations shown on the plans :-

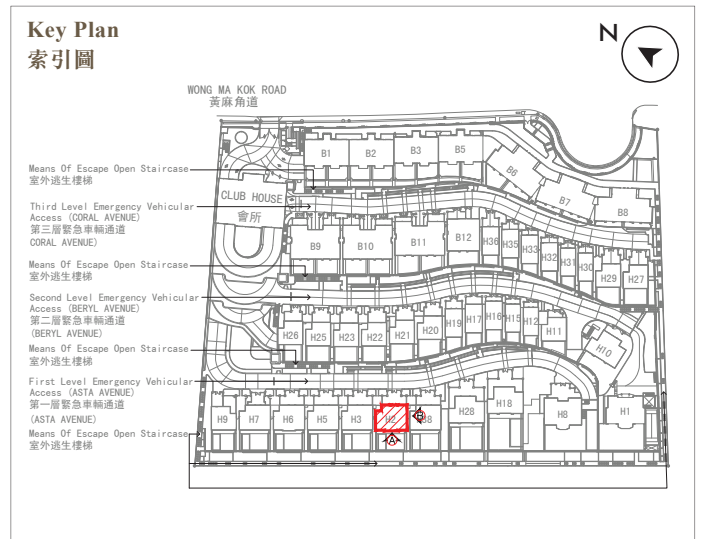
- (a) are prepared on the basis of the approved Building Plans for the Development as of 8 December 2022 and 6 June, 2023; and
- (b) are in general accordance with the outward appearance of the Development.

發展項目的認可人士已證明此等圖顯示的立面:-

- (a) 以2022年12月8日及2023年6月6日的情況為準的發展項目的經批准的建築圖則為基礎擬備；及
- (b) 大致上與發展項目的外觀一致。

20. ELEVATION PLAN
立面圖

House 2
2號洋房



B = Block = 座 H = House = 洋房

Elevation Plan A
立面圖 A



Elevation Plan B
立面圖 B



Authorized Person for the Development has certified that the elevations shown on the plans :-

- (a) are prepared on the basis of the approved Building Plans for the Development as of 8 December 2022 and 6 June 2023; and
- (b) are in general accordance with the outward appearance of the Development.

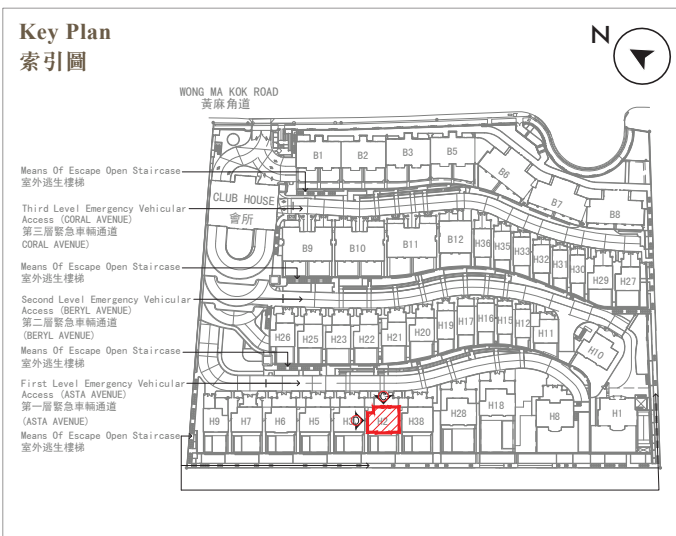
發展項目的認可人士已證明此等圖顯示的立面:-

- (a) 以2022年12月8日及2023年6月6日的情況為準的發展項目的經批准的建築圖則為基礎擬備；及
- (b) 大致上與發展項目的外觀一致。

20. ELEVATION PLAN 立面圖

House 2 2號洋房

Elevation Plan C (As Per Approved General Building Plan) 立面圖 C (根據批准建築圖則)



B = Block = 座 H = House = 洋房

Elevation Plan C (As-is Elevation Plan) 立面圖 C (現狀立面圖)



Elevation Plan D 立面圖 D



Authorized Person for the Development has certified that the elevations shown on the plans :-

- are prepared on the basis of the approved Building Plans for the Development as of 8 December 2022 and 6 June 2023; and
- are in general accordance with the outward appearance of the Development.

Notes:

- Certain part of House 2 has been altered by way of minor works, designated exempted works, or exempted works under the Buildings Ordinance after completion of the Development, the latest condition of which is shown on the relevant elevation plan showing latest elevation. The alteration works are as follows:
 - Alternation of window sub-frame.
- Please refer to same page of this sales brochure in studying items of minor works, designated exempted works or exempted works under the Buildings Ordinance made in this unit as indicated with blue wavy line ().

發展項目的認可人士已證明此等圖顯示的立面:-

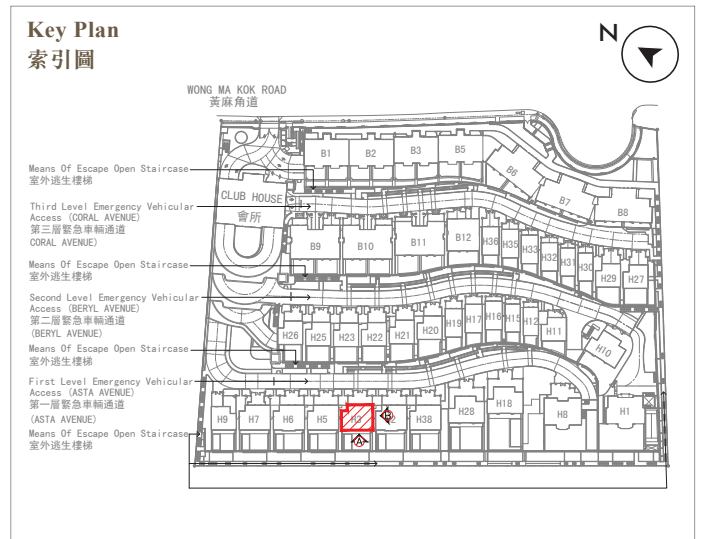
- 以2022年12月8日及2023年6月6日的情況為準的發展項目的經批准的建築圖則為基礎擬備；及
- 大致上與發展項目的外觀一致。

備註：

- 2號洋房某些部份因在發展項目落成後進行小型工程、指定豁免工程或獲《建築物條例》豁免的工程而有所改動，現狀請參閱有關現狀立面圖。該等改動如下：
 - 改動窗的輔助框。
- 請參閱本售樓說明書本頁以協助閱讀本單位以藍色曲線 () 顯示之有關已完成的小型工程、指定豁免工程或獲《建築物條例》豁免的工程。

20. ELEVATION PLAN
立面圖

House 3
3號洋房



B = Block = 座 H = House = 洋房

Elevation Plan A
立面圖 A



Elevation Plan B
立面圖 B



Authorized Person for the Development has certified that the elevations shown on the plans :-

- (a) are prepared on the basis of the approved Building Plans for the Development as of 8 December 2022 and 6 June 2023; and
- (b) are in general accordance with the outward appearance of the Development.

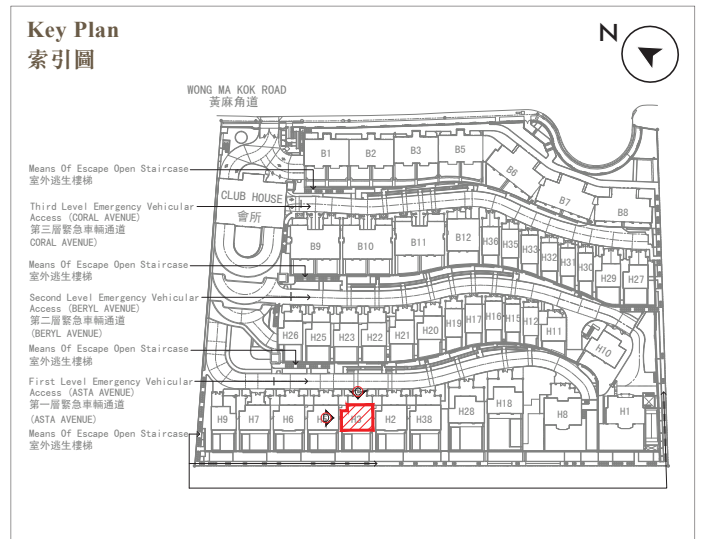
發展項目的認可人士已證明此等圖顯示的立面:-

- (a) 以2022年12月8日及2023年6月6日的情況為準的發展項目的經批准的建築圖則為基礎擬備；及
- (b) 大致上與發展項目的外觀一致。

20. ELEVATION PLAN 立面圖

House 3 3號洋房

Elevation Plan C (As Per Approved General Building Plan) 立面圖 C (根據批准建築圖則)

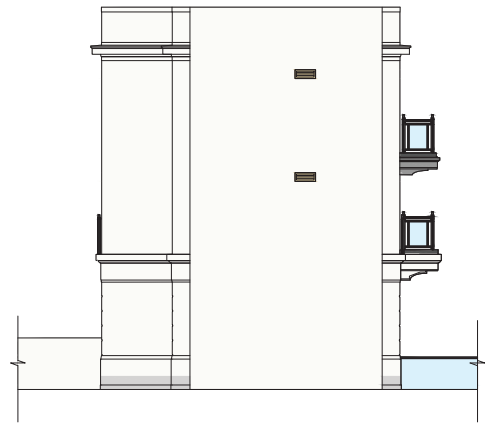


B = Block = 座 H = House = 洋房

Elevation Plan C (As-is Elevation Plan) 立面圖 C (現狀立面圖)



Elevation Plan D 立面圖 D



Authorized Person for the Development has certified that the elevations shown on the plans :-

- are prepared on the basis of the approved Building Plans for the Development as of 8 December 2022 and 6 June 2023; and
- are in general accordance with the outward appearance of the Development.

Notes:

- Certain part of House 3 has been altered by way of minor works, designated exempted works, or exempted works under the Buildings Ordinance after completion of the Development, the latest condition of which is shown on the relevant elevation plan showing latest elevation. The alteration works are as follows:
 - Alternation of window sub-frame.
- Please refer to same page of this sales brochure in studying items of minor works, designated exempted works or exempted works under the Buildings Ordinance made in this unit as indicated with blue wavy line ().

發展項目的認可人士已證明此等圖顯示的立面:-

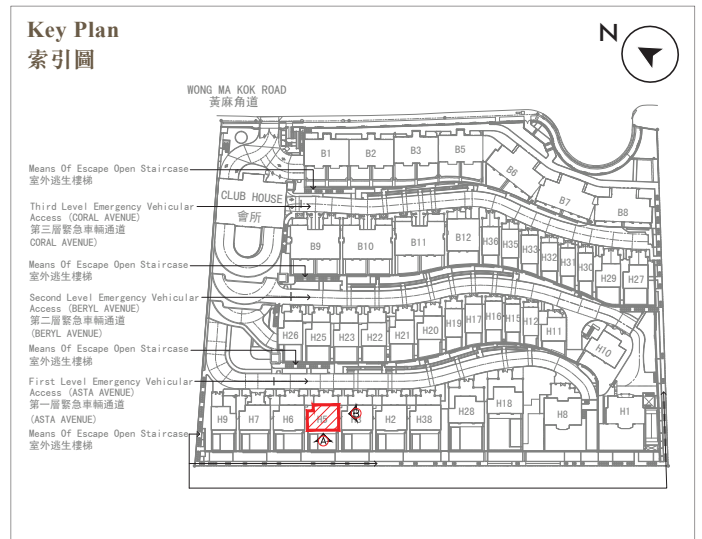
- 以2022年12月8日及2023年6月6日的情況為準的發展項目的經批准的建築圖則為基礎擬備；及
- 大致上與發展項目的外觀一致。

備註：

- 3號洋房某些部份因在發展項目落成後進行小型工程、指定豁免工程或獲《建築物條例》豁免的工程而有所改動，現狀請參閱有關現狀立面圖。該等改動如下：
 - 改動窗的輔助框。
- 請參閱本售樓說明書本頁以協助閱讀本單位以藍色曲線 () 顯示之有關已完成的小型工程、指定豁免工程或獲《建築物條例》豁免的工程。

20. ELEVATION PLAN
立面圖

House 5
5號洋房



B = Block = 座 H = House = 洋房

Elevation Plan A
立面圖 A



Elevation Plan B
立面圖 B



Authorized Person for the Development has certified that the elevations shown on the plans :-

- (a) are prepared on the basis of the approved Building Plans for the Development as of 8 December 2022 and 6 June 2023; and
- (b) are in general accordance with the outward appearance of the Development.

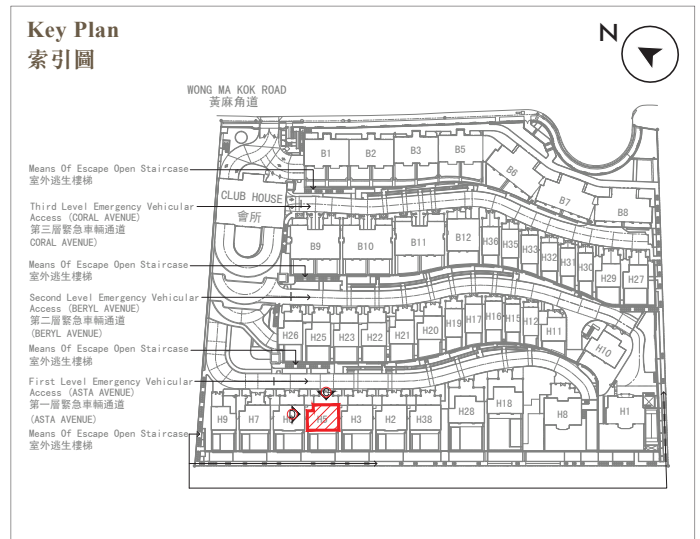
發展項目的認可人士已證明此等圖顯示的立面:-

- (a) 以2022年12月8日及2023年6月6日的情況為準的發展項目的經批准的建築圖則為基礎擬備；及
- (b) 大致上與發展項目的外觀一致。

20. ELEVATION PLAN 立面圖

House 5 5號洋房

Elevation Plan C (As Per Approved General Building Plan) 立面圖 C (根據批准建築圖則)

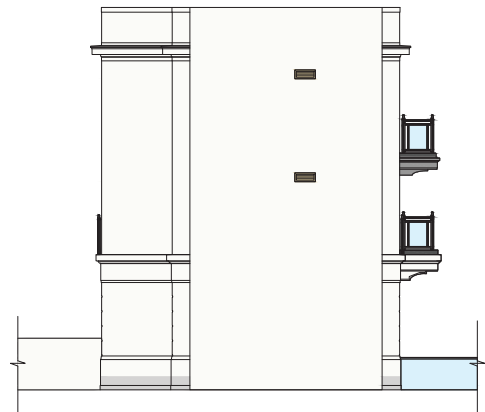


B = Block = 座 H = House = 洋房

Elevation Plan C (As-is Elevation Plan) 立面圖 C (現狀立面圖)



Elevation Plan D 立面圖 D



Authorized Person for the Development has certified that the elevations shown on the plans :-

- are prepared on the basis of the approved Building Plans for the Development as of 8 December 2022 and 6 June 2023; and
- are in general accordance with the outward appearance of the Development.

Notes:

- Certain part of House 5 has been altered by way of minor works, designated exempted works, or exempted works under the Buildings Ordinance after completion of the Development, the latest condition of which is shown on the relevant elevation plan showing latest elevation. The alteration works are as follows:
 - Alternation of window sub-frame.
- Please refer to same page of this sales brochure in studying items of minor works, designated exempted works or exempted works under the Buildings Ordinance made in this unit as indicated with blue wavy line ().

發展項目的認可人士已證明此等圖顯示的立面:-

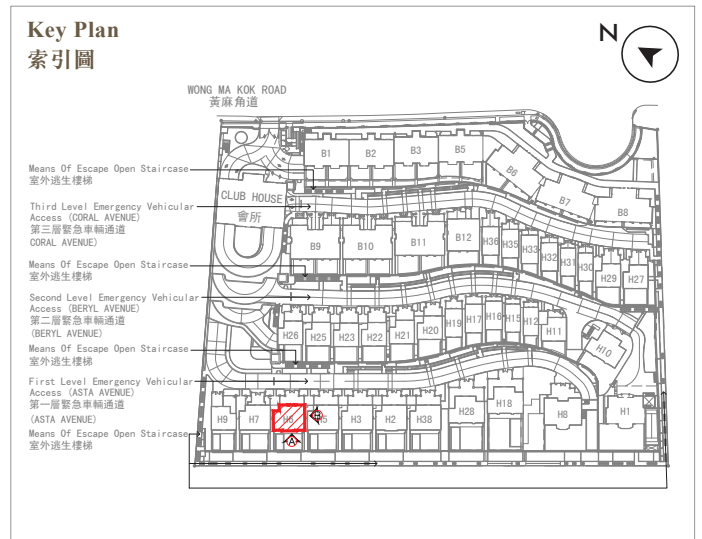
- 以2022年12月8日及2023年6月6日的情況為準的發展項目的經批准的建築圖則為基礎擬備；及
- 大致上與發展項目的外觀一致。

備註：

- 5號洋房某些部份因在發展項目落成後進行小型工程、指定豁免工程或獲《建築物條例》豁免的工程而有所改動，現狀請參閱有關現狀立面圖。該等改動如下：
 - 改動窗的輔助框。
- 請參閱本售樓說明書本頁以協助閱讀本單位以藍色曲線 () 顯示之有關已完成的小型工程、指定豁免工程或獲《建築物條例》豁免的工程。

20. ELEVATION PLAN
立面圖

House 6
6號洋房



B = Block = 座 H = House = 洋房

Elevation Plan A
立面圖 A



Elevation Plan B
立面圖 B



Authorized Person for the Development has certified that the elevations shown on the plans :-

- (a) are prepared on the basis of the approved Building Plans for the Development as of 8 December 2022 and 6 June 2023; and
- (b) are in general accordance with the outward appearance of the Development.

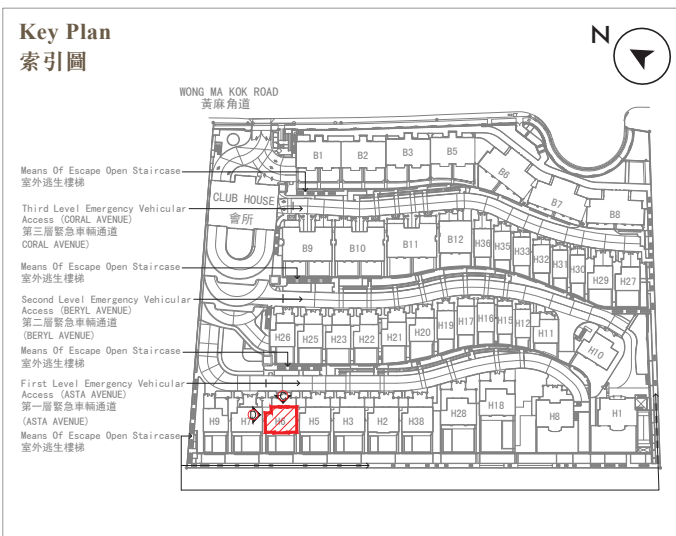
發展項目的認可人士已證明此等圖顯示的立面:-

- (a) 以2022年12月8日及2023年6月6日的情況為準的發展項目的經批准的建築圖則為基礎擬備；及
- (b) 大致上與發展項目的外觀一致。

20. ELEVATION PLAN 立面圖

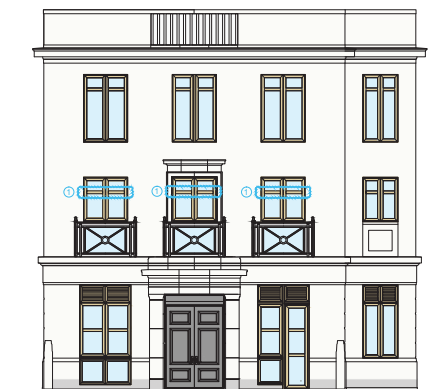
House 6 6號洋房

Elevation Plan C (As Per Approved General Building Plan) 立面圖 C (根據批准建築圖則)

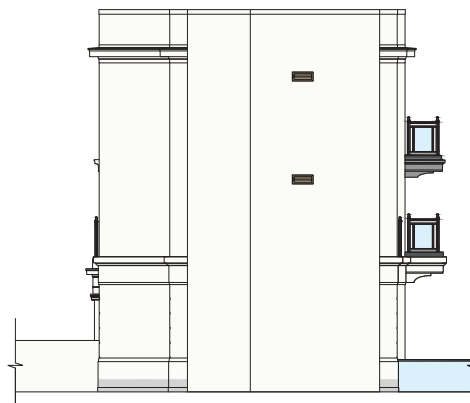


B = Block = 座 H = House = 洋房

Elevation Plan C (As-is Elevation Plan) 立面圖 C (現狀立面圖)



Elevation Plan D 立面圖 D



Authorized Person for the Development has certified that the elevations shown on the plans :-

- (a) are prepared on the basis of the approved Building Plans for the Development as of 8 December 2022 and 6 June 2023; and
- (b) are in general accordance with the outward appearance of the Development.

Notes:

1. Certain part of House 6 has been altered by way of minor works, designated exempted works, or exempted works under the Buildings Ordinance after completion of the Development, the latest condition of which is shown on the relevant elevation plan showing latest elevation. The alteration works are as follows:
 - ① Alternation of window sub-frame.
2. Please refer to same page of this sales brochure in studying items of minor works, designated exempted works or exempted works under the Buildings Ordinance made in this unit as indicated with blue wavy line ().

發展項目的認可人士已證明此等圖顯示的立面:-

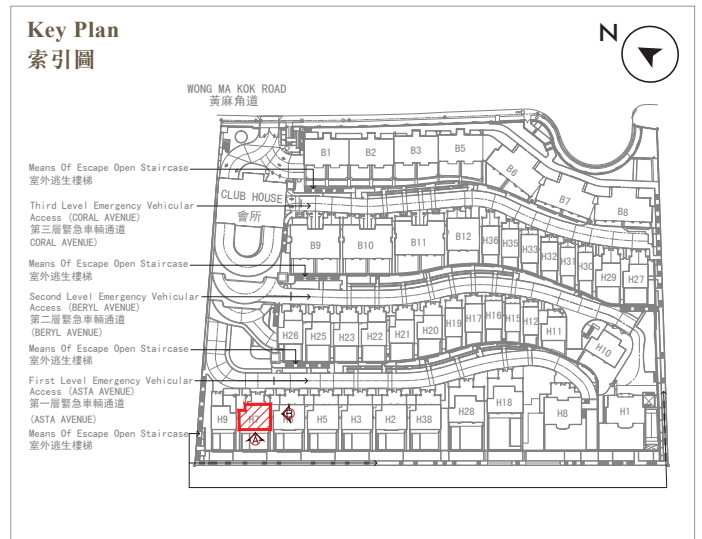
- (a) 以2022年12月8日及2023年6月6日的情況為準的發展項目的經批准的建築圖則為基礎擬備；及
- (b) 大致上與發展項目的外觀一致。

備註：

1. 6號洋房某些部份因在發展項目落成後進行小型工程、指定豁免工程或獲《建築物條例》豁免的工程而有所改動，現狀請參閱有關現狀立面圖。該等改動如下：
 - ① 改動窗的輔助框。
2. 請參閱本售樓說明書本頁以協助閱讀本單位以藍色曲線 () 顯示之有關已完成的小型工程、指定豁免工程或獲《建築物條例》豁免的工程。

20. ELEVATION PLAN
立面圖

House 7
7號洋房



B = Block = 座 H = House = 洋房

Elevation Plan A
立面圖 A



Elevation Plan B
立面圖 B



Authorized Person for the Development has certified that the elevations shown on the plans :-

- (a) are prepared on the basis of the approved Building Plans for the Development as of 8 December 2022 and 6 June 2023; and
- (b) are in general accordance with the outward appearance of the Development.

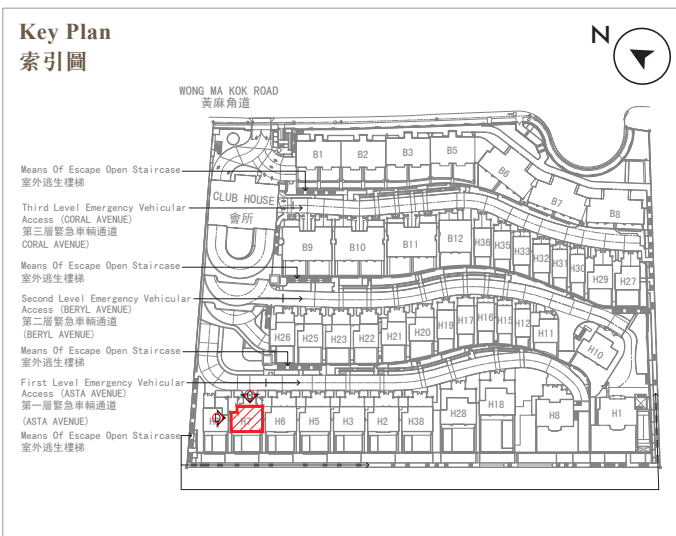
發展項目的認可人士已證明此等圖顯示的立面:-

- (a) 以2022年12月8日及2023年6月6日的情況為準的發展項目的經批准的建築圖則為基礎擬備；及
- (b) 大致上與發展項目的外觀一致。

20. ELEVATION PLAN 立面圖

House 7 7號洋房

Elevation Plan C (As Per Approved General Building Plan) 立面圖 C (根據批准建築圖則)

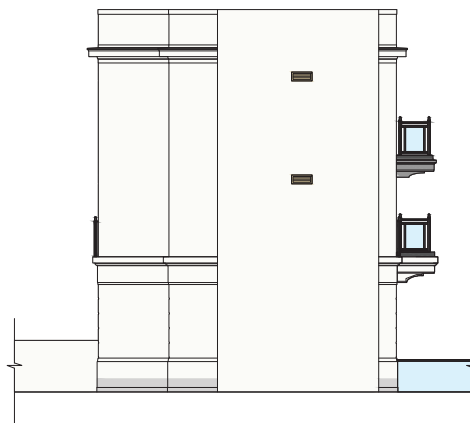


B = Block = 座 H = House = 洋房

Elevation Plan C (As-is Elevation Plan) 立面圖 C (現狀立面圖)



Elevation Plan D 立面圖 D



Authorized Person for the Development has certified that the elevations shown on the plans :-

- are prepared on the basis of the approved Building Plans for the Development as of 8 December 2022 and 6 June 2023; and
- are in general accordance with the outward appearance of the Development.

Notes:

- Certain part of House 7 has been altered by way of minor works, designated exempted works, or exempted works under the Buildings Ordinance after completion of the Development, the latest condition of which is shown on the relevant elevation plan showing latest elevation. The alteration works are as follows:
 - Alternation of window sub-frame.
- Please refer to same page of this sales brochure in studying items of minor works, designated exempted works or exempted works under the Buildings Ordinance made in this unit as indicated with blue wavy line ().

發展項目的認可人士已證明此等圖顯示的立面:-

- 以2022年12月8日及2023年6月6日的情況為準的發展項目的經批准的建築圖則為基礎擬備；及
- 大致上與發展項目的外觀一致。

備註：

- 7號洋房某些部份因在發展項目落成後進行小型工程、指定豁免工程或獲《建築物條例》豁免的工程而有所改動，現狀請參閱有關現狀立面圖。該等改動如下：
 - 改動窗的輔助框。
- 請參閱本售樓說明書本頁以協助閱讀本單位以藍色曲線 () 顯示之有關已完成的小型工程、指定豁免工程或獲《建築物條例》豁免的工程。

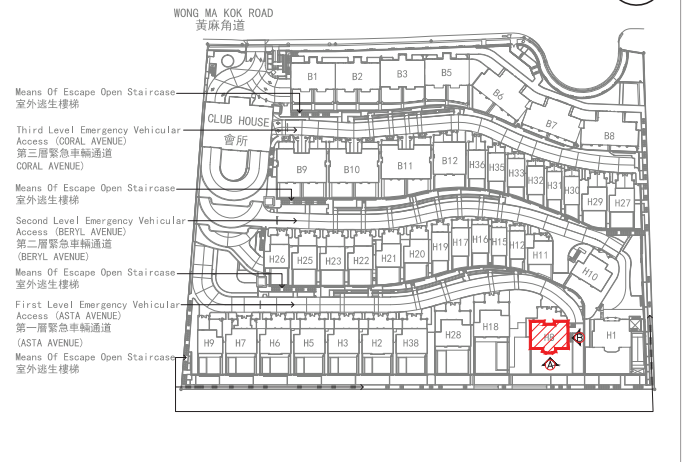
20. ELEVATION PLAN
立面圖

House 8
8號洋房

Elevation Plan A
立面圖 A



Key Plan
索引圖



B = Block = 座 H = House = 洋房

Elevation Plan B (As Per Approved General Building Plan)
立面圖 B (根據批准建築圖則)



Elevation Plan B (Latest Elevation Plan)
立面圖 B (現狀立面圖)



Authorized Person for the Development has certified that the elevations shown on the plans :-

- (a) are prepared on the basis of the approved Building Plans for the Development as of 8 December 2022 and 6 June 2023; and
- (b) are in general accordance with the outward appearance of the Development.

Notes:

1. Certain part of House 8 has been altered by way of minor works, designated exempted works, or exempted works under the Buildings Ordinance after completion of the Development, the latest condition of which is shown on the relevant elevation plan showing latest elevation. The alteration works are as follows:
 - ① Alternation of protective barrier.
2. Please refer to same page of this sales brochure in studying items of minor works, designated exempted works or exempted works under the Buildings Ordinance made in this unit as indicated with blue wavy line ().

發展項目的認可人士已證明此等圖顯示的立面:-

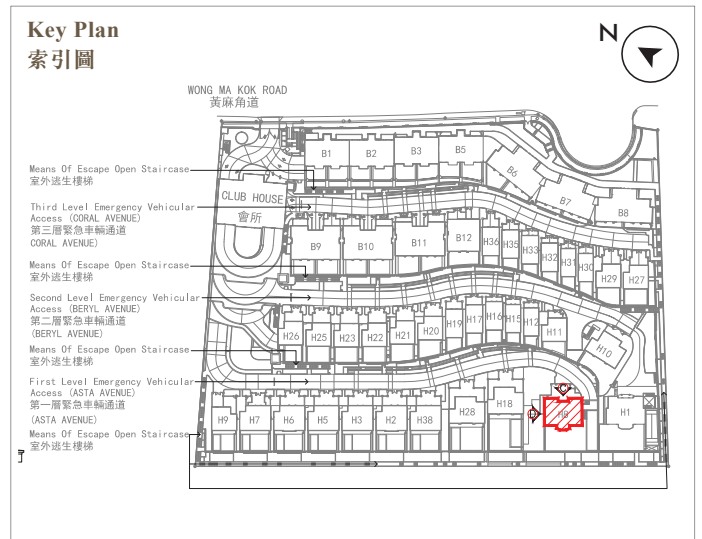
- (a) 以2022年12月8日及2023年6月6日的情況為準的發展項目的經批准的建築圖則為基礎擬備；及
- (b) 大致上與發展項目的外觀一致。

備註：

1. 8號洋房某些部份因在發展項目落成後進行小型工程、指定豁免工程或獲《建築物條例》豁免的工程而有所改動，現狀請參閱有關現狀立面圖。該等改動如下：
 - ① 改動防護欄障。
2. 請參閱本售樓說明書本頁以協助閱讀本單位以藍色曲線 () 顯示之有關已完成的小型工程、指定豁免工程或獲《建築物條例》豁免的工程。

20. ELEVATION PLAN
立面圖

House 8
8號洋房



B = Block = 座 H = House = 洋房

Elevation Plan C
立面圖 C



Elevation Plan D
立面圖 D



Authorized Person for the Development has certified that the elevations shown on the plans :-

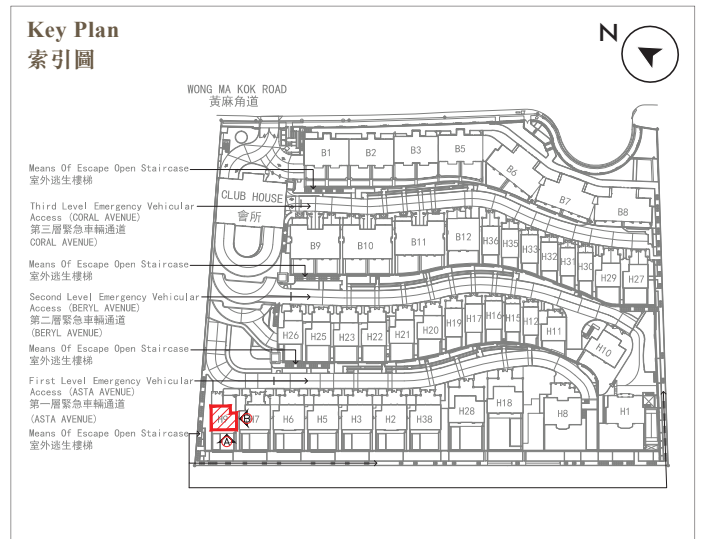
- (a) are prepared on the basis of the approved Building Plans for the Development as of 8 December 2022 and 6 June 2023; and
- (b) are in general accordance with the outward appearance of the Development.

發展項目的認可人士已證明此等圖顯示的立面 :-

- (a) 以2022年12月8日及2023年6月6日的情況為準的發展項目的經批准的建築圖則為基礎擬備；及
- (b) 大致上與發展項目的外觀一致。

20. ELEVATION PLAN
立面圖

House 9
9號洋房



B = Block = 座 H = House = 洋房

Elevation Plan A
立面圖 A



Elevation Plan B
立面圖 B



Authorized Person for the Development has certified that the elevations shown on the plans :-

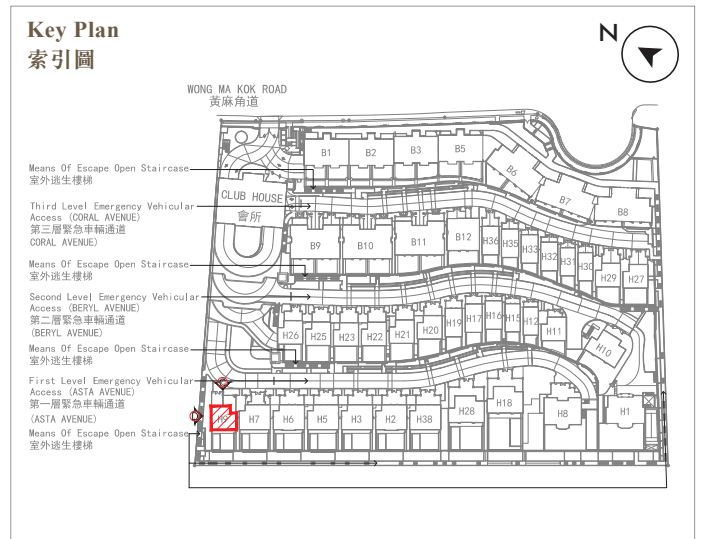
- (a) are prepared on the basis of the approved Building Plans for the Development as of 8 December 2022 and 6 June 2023; and
- (b) are in general accordance with the outward appearance of the Development.

發展項目的認可人士已證明此等圖顯示的立面 :-

- (a) 以 2022 年 12 月 8 日及 2023 年 6 月 6 日的情況為準的發展項目的經批准的建築圖則為基礎擬備；及
- (b) 大致上與發展項目的外觀一致。

20. ELEVATION PLAN
立面圖

House 9
9號洋房

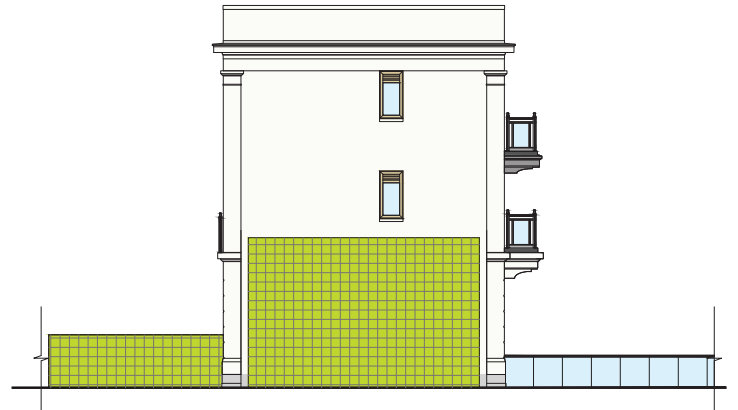


B = Block = 座 H = House = 洋房

Elevation Plan C
立面圖 C



Elevation Plan D
立面圖 D



Authorized Person for the Development has certified that the elevations shown on the plans :-

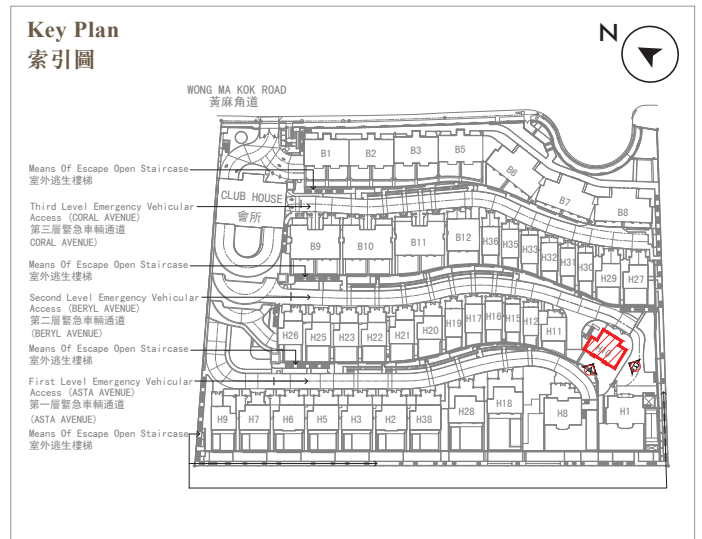
- (a) are prepared on the basis of the approved Building Plans for the Development as of 8 December 2022 and 6 June 2023; and
- (b) are in general accordance with the outward appearance of the Development.

發展項目的認可人士已證明此等圖顯示的立面 :-

- (a) 以 2022 年 12 月 8 日及 2023 年 6 月 6 日的情況為準的發展項目的經批准的建築圖則為基礎擬備；及
- (b) 大致上與發展項目的外觀一致。

20. ELEVATION PLAN
立面圖

House 10
10 號洋房

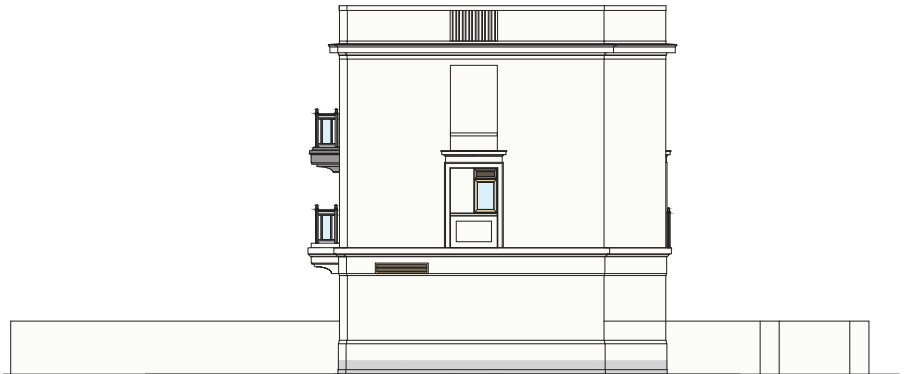


B = Block = 座 H = House = 洋房

Elevation Plan A
立面圖 A



Elevation Plan B
立面圖 B



Authorized Person for the Development has certified that the elevations shown on the plans :-

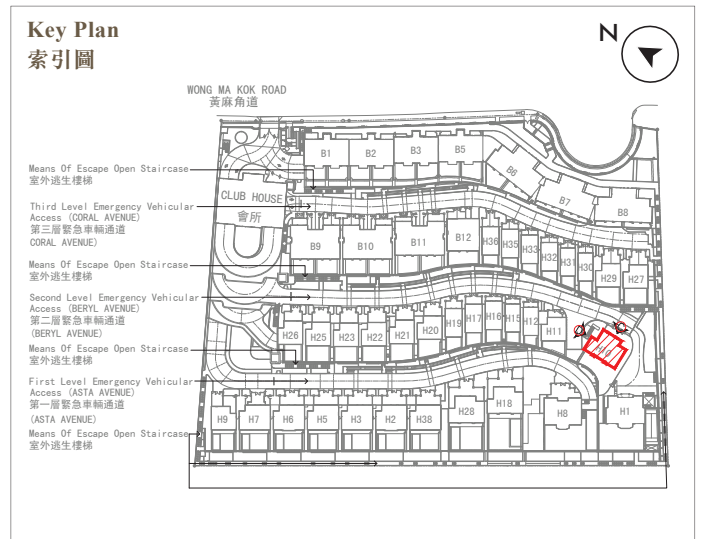
- (a) are prepared on the basis of the approved Building Plans for the Development as of 8 December 2022 and 6 June 2023; and
- (b) are in general accordance with the outward appearance of the Development.

發展項目的認可人士已證明此等圖顯示的立面 :-

- (a) 以 2022 年 12 月 8 日及 2023 年 6 月 6 日的情況為準的發展項目的經批准的建築圖則為基礎擬備；及
- (b) 大致上與發展項目的外觀一致。

20. ELEVATION PLAN
立面圖

House 10
10 號洋房

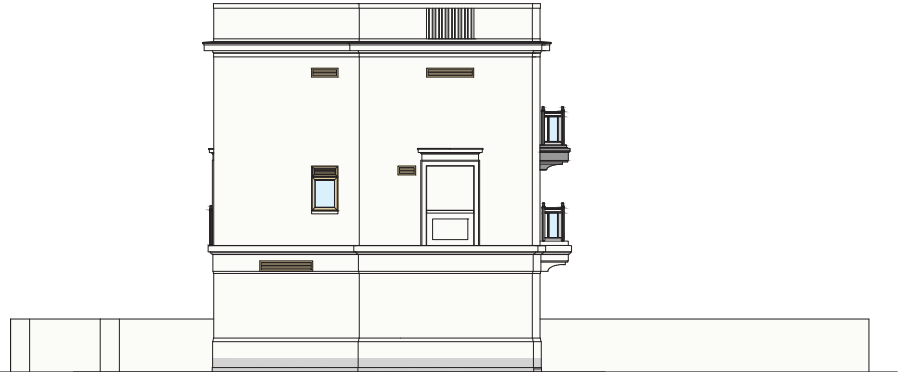


B = Block = 座 H = House = 洋房

Elevation Plan C
立面圖 C



Elevation Plan D
立面圖 D



Authorized Person for the Development has certified that the elevations shown on the plans :-

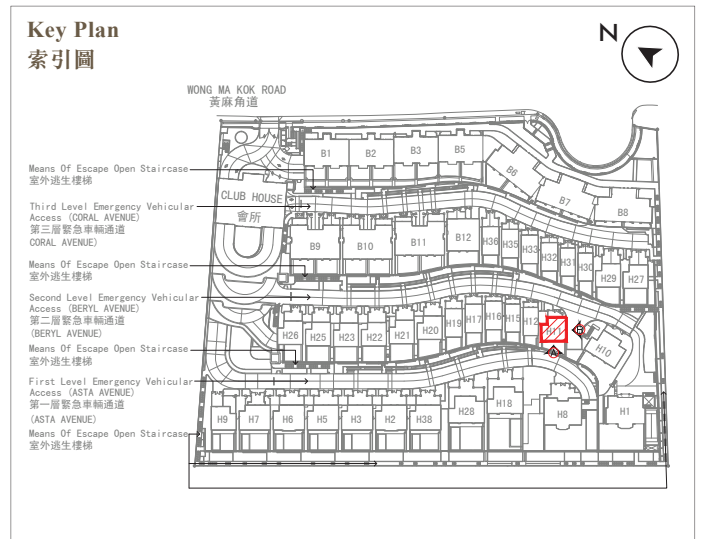
- (a) are prepared on the basis of the approved Building Plans for the Development as of 8 December 2022 and 6 June 2023; and
- (b) are in general accordance with the outward appearance of the Development.

發展項目的認可人士已證明此等圖顯示的立面 :-

- (a) 以 2022 年 12 月 8 日及 2023 年 6 月 6 日的情況為準的發展項目的經批准的建築圖則為基礎擬備；及
- (b) 大致上與發展項目的外觀一致。

20. ELEVATION PLAN
立面圖

House 11
11 號洋房



B = Block = 座 H = House = 洋房

Elevation Plan A
立面圖 A



Elevation Plan B
立面圖 B



Authorized Person for the Development has certified that the elevations shown on the plans :-

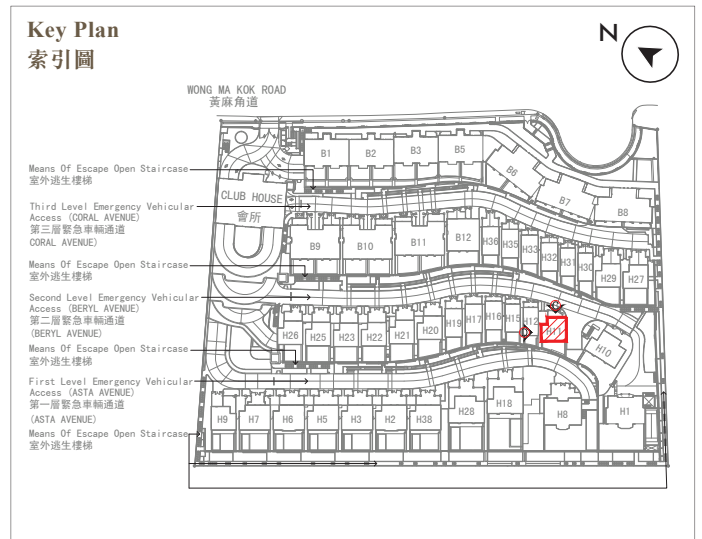
- (a) are prepared on the basis of the approved Building Plans for the Development as of 8 December 2022 and 6 June 2023; and
- (b) are in general accordance with the outward appearance of the Development.

發展項目的認可人士已證明此等圖顯示的立面 :-

- (a) 以 2022 年 12 月 8 日及 2023 年 6 月 6 日的情況為準的發展項目的經批准的建築圖則為基礎擬備；及
- (b) 大致上與發展項目的外觀一致。

20. ELEVATION PLAN
立面圖

House 11
11 號洋房

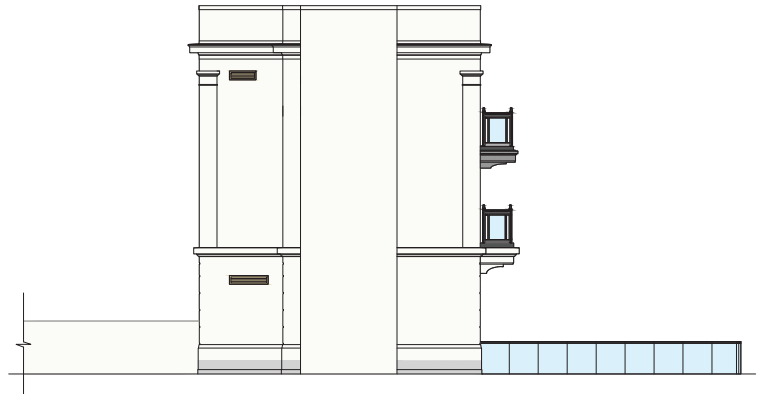


B = Block = 座 H = House = 洋房

Elevation Plan C
立面圖 C



Elevation Plan D
立面圖 D



Authorized Person for the Development has certified that the elevations shown on the plans :-

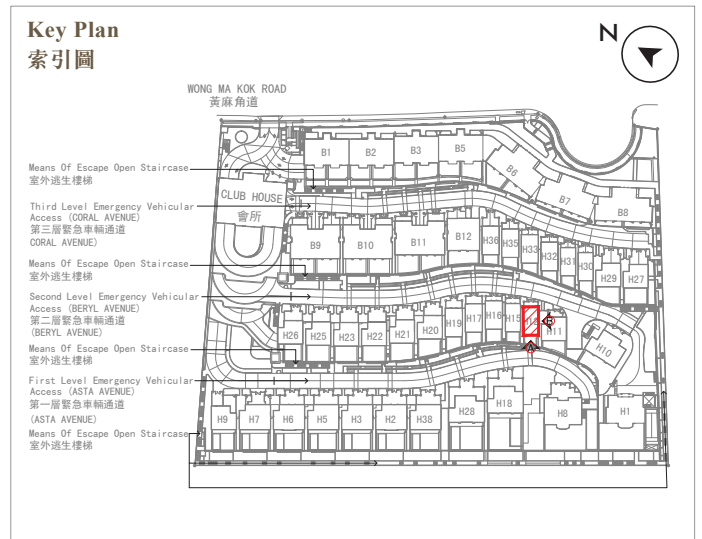
- (a) are prepared on the basis of the approved Building Plans for the Development as of 8 December 2022 and 6 June 2023; and
- (b) are in general accordance with the outward appearance of the Development.

發展項目的認可人士已證明此等圖顯示的立面 :-

- (a) 以 2022 年 12 月 8 日及 2023 年 6 月 6 日的情況為準的發展項目的經批准的建築圖則為基礎擬備；及
- (b) 大致上與發展項目的外觀一致。

20. ELEVATION PLAN
立面圖

House 12
12 號洋房



B = Block = 座 H = House = 洋房

Elevation Plan A
立面圖 A



Elevation Plan B
立面圖 B



Authorized Person for the Development has certified that the elevations shown on the plans :-

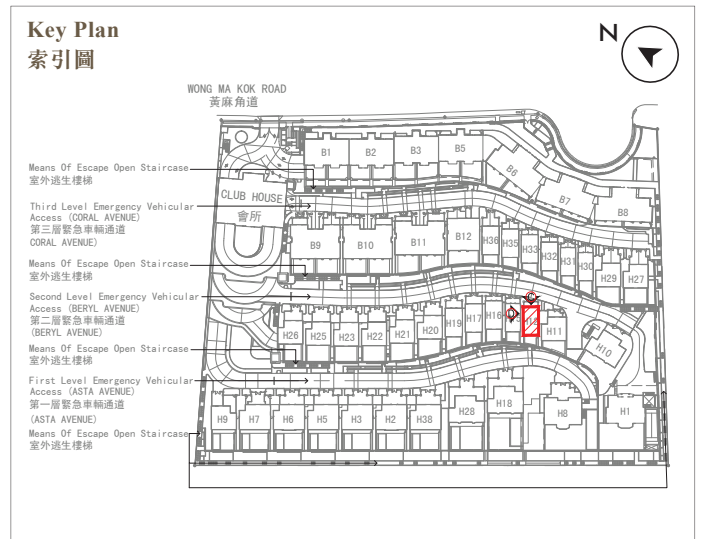
- (a) are prepared on the basis of the approved Building Plans for the Development as of 8 December 2022 and 6 June 2023; and
- (b) are in general accordance with the outward appearance of the Development.

發展項目的認可人士已證明此等圖顯示的立面 :-

- (a) 以 2022 年 12 月 8 日及 2023 年 6 月 6 日的情況為準的發展項目的經批准的建築圖則為基礎擬備；及
- (b) 大致上與發展項目的外觀一致。

20. ELEVATION PLAN
立面圖

House 12
12 號洋房

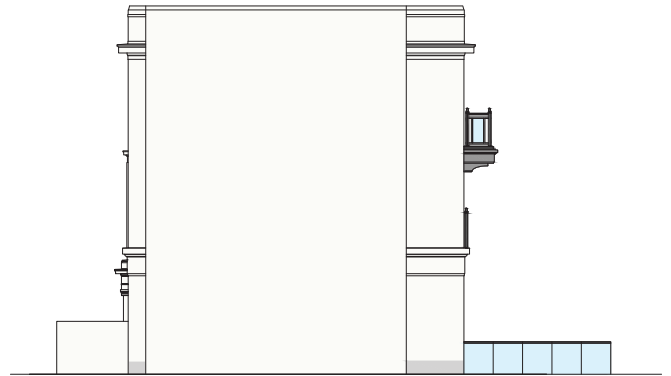


B = Block = 座 H = House = 洋房

Elevation Plan C
立面圖 C



Elevation Plan D
立面圖 D



Authorized Person for the Development has certified that the elevations shown on the plans :-

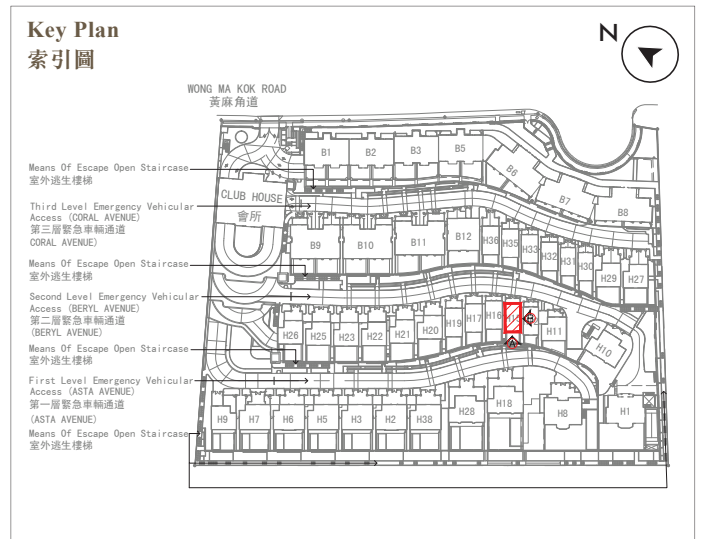
- (a) are prepared on the basis of the approved Building Plans for the Development as of 8 December 2022 and 6 June 2023; and
- (b) are in general accordance with the outward appearance of the Development.

發展項目的認可人士已證明此等圖顯示的立面 :-

- (a) 以 2022 年 12 月 8 日及 2023 年 6 月 6 日的情況為準的發展項目的經批准的建築圖則為基礎擬備；及
- (b) 大致上與發展項目的外觀一致。

20. ELEVATION PLAN
立面圖

House 15
15 號洋房



B = Block = 座 H = House = 洋房

Elevation Plan A
立面圖 A



Elevation Plan B
立面圖 B



Authorized Person for the Development has certified that the elevations shown on the plans :-

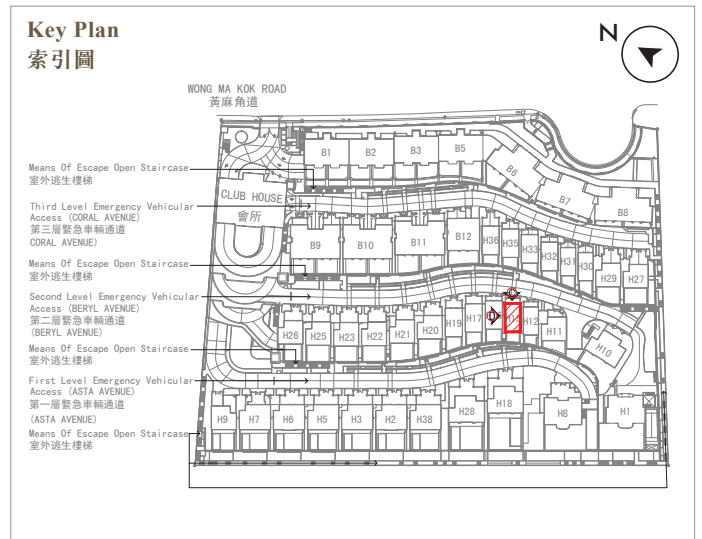
- (a) are prepared on the basis of the approved Building Plans for the Development as of 8 December 2022 and 6 June 2023; and
- (b) are in general accordance with the outward appearance of the Development.

發展項目的認可人士已證明此等圖顯示的立面 :-

- (a) 以 2022 年 12 月 8 日及 2023 年 6 月 6 日的情況為準的發展項目的經批准的建築圖則為基礎擬備；及
- (b) 大致上與發展項目的外觀一致。

20. ELEVATION PLAN
立面圖

House 15
15 號洋房

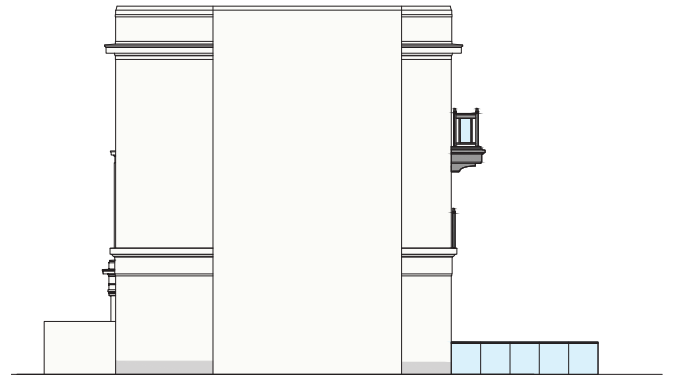


B = Block = 座 H = House = 洋房

Elevation Plan C
立面圖 C



Elevation Plan D
立面圖 D



Authorized Person for the Development has certified that the elevations shown on the plans :-

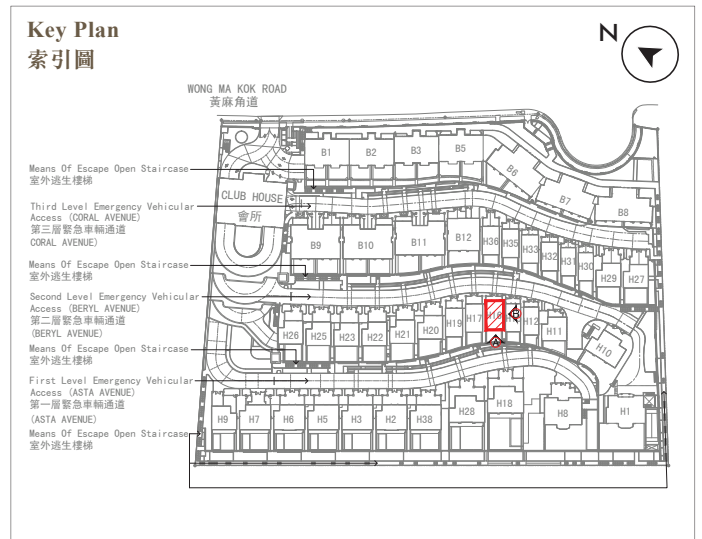
- (a) are prepared on the basis of the approved Building Plans for the Development as of 8 December 2022 and 6 June 2023; and
- (b) are in general accordance with the outward appearance of the Development.

發展項目的認可人士已證明此等圖顯示的立面 :-

- (a) 以 2022 年 12 月 8 日及 2023 年 6 月 6 日的情況為準的發展項目的經批准的建築圖則為基礎擬備；及
- (b) 大致上與發展項目的外觀一致。

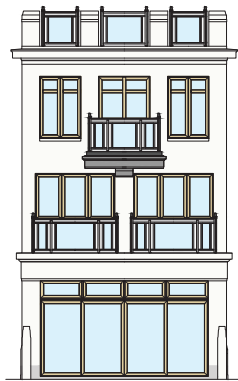
20. ELEVATION PLAN
立面圖

House 16
16 號洋房



B = Block = 座 H = House = 洋房

Elevation Plan A
立面圖 A



Elevation Plan B
立面圖 B



Authorized Person for the Development has certified that the elevations shown on the plans :-

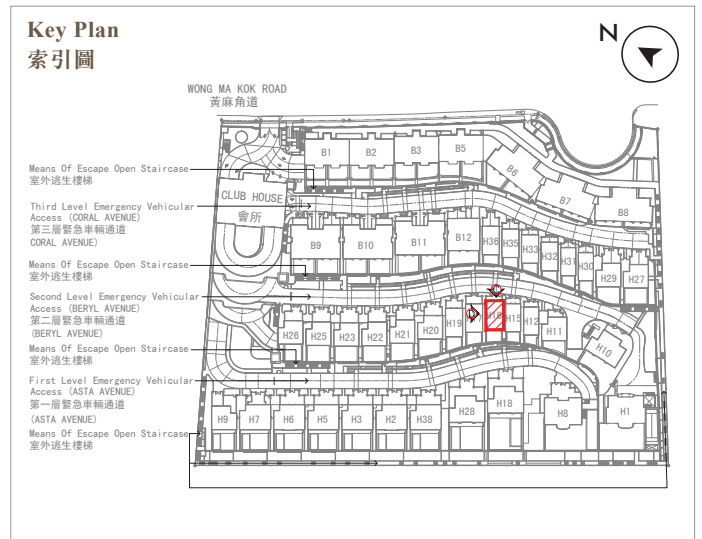
- (a) are prepared on the basis of the approved Building Plans for the Development as of 8 December 2022 and 6 June 2023; and
- (b) are in general accordance with the outward appearance of the Development.

發展項目的認可人士已證明此等圖顯示的立面 :-

- (a) 以 2022 年 12 月 8 日及 2023 年 6 月 6 日的情況為準的發展項目的經批准的建築圖則為基礎擬備；及
- (b) 大致上與發展項目的外觀一致。

20. ELEVATION PLAN
立面圖

House 16
16 號洋房

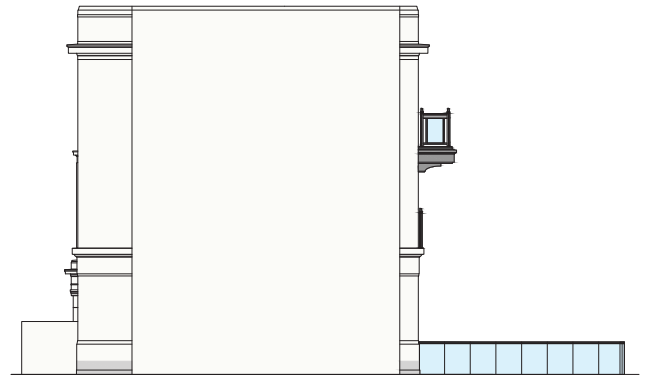


B = Block = 座 H = House = 洋房

Elevation Plan C
立面圖 C



Elevation Plan D
立面圖 D



Authorized Person for the Development has certified that the elevations shown on the plans :-

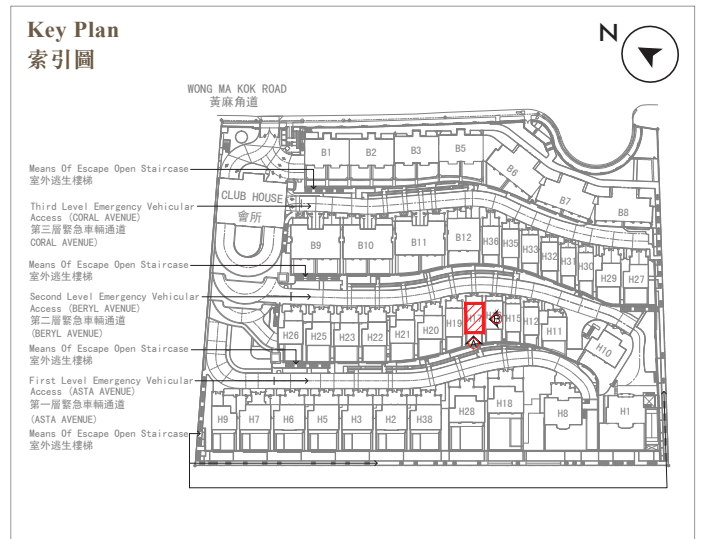
- (a) are prepared on the basis of the approved Building Plans for the Development as of 8 December 2022 and 6 June 2023; and
- (b) are in general accordance with the outward appearance of the Development.

發展項目的認可人士已證明此等圖顯示的立面 :-

- (a) 以 2022 年 12 月 8 日及 2023 年 6 月 6 日的情況為準的發展項目的經批准的建築圖則為基礎擬備；及
- (b) 大致上與發展項目的外觀一致。

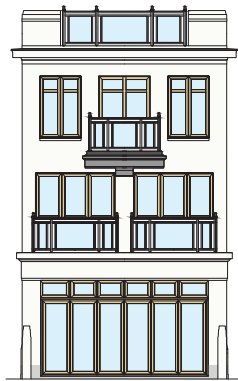
20. ELEVATION PLAN
立面圖

House 17
17號洋房



B = Block = 座 H = House = 洋房

Elevation Plan A
立面圖 A



Elevation Plan B
立面圖 B



Authorized Person for the Development has certified that the elevations shown on the plans :-

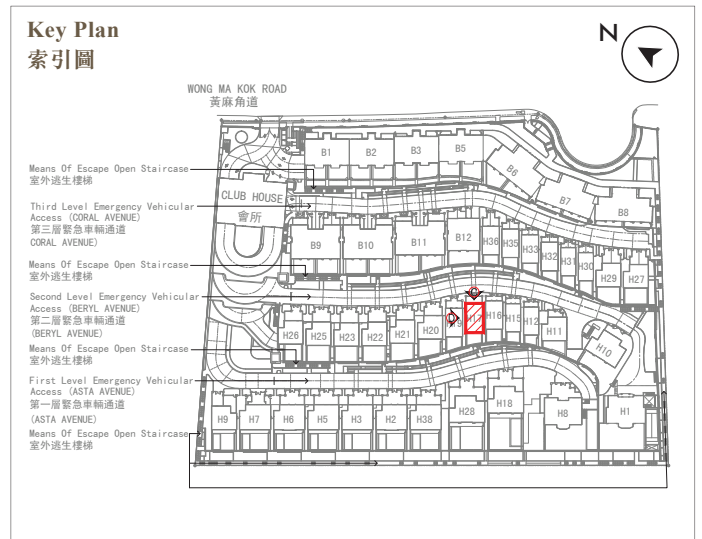
- (a) are prepared on the basis of the approved Building Plans for the Development as of 8 December 2022 and 6 June 2023; and
- (b) are in general accordance with the outward appearance of the Development.

發展項目的認可人士已證明此等圖顯示的立面 :-

- (a) 以 2022 年 12 月 8 日及 2023 年 6 月 6 日的情況為準的發展項目的經批准的建築圖則為基礎擬備；及
- (b) 大致上與發展項目的外觀一致。

20. ELEVATION PLAN
立面圖

House 17
17 號洋房

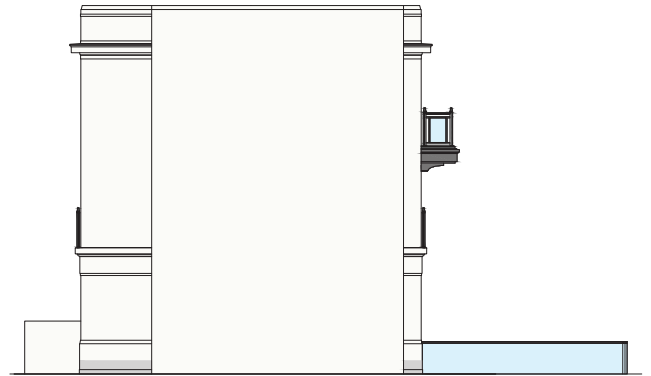


B = Block = 座 H = House = 洋房

Elevation Plan C
立面圖 C



Elevation Plan D
立面圖 D



Authorized Person for the Development has certified that the elevations shown on the plans :-

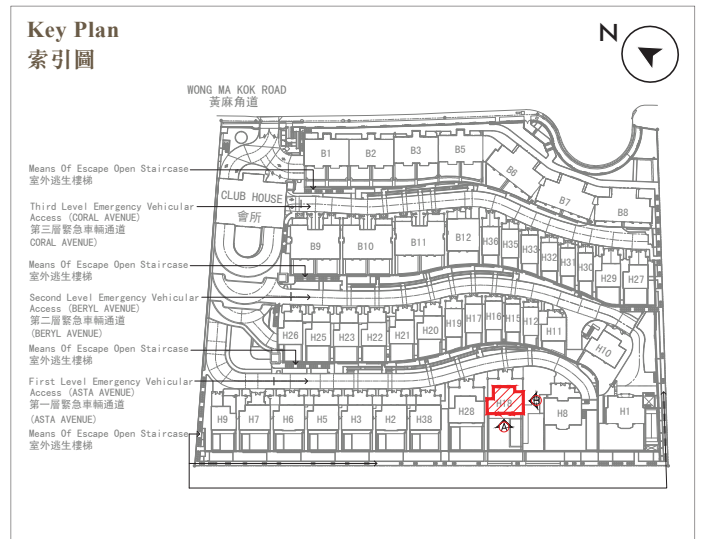
- (a) are prepared on the basis of the approved Building Plans for the Development as of 8 December 2022 and 6 June 2023; and
- (b) are in general accordance with the outward appearance of the Development.

發展項目的認可人士已證明此等圖顯示的立面 :-

- (a) 以 2022 年 12 月 8 日及 2023 年 6 月 6 日的情況為準的發展項目的經批准的建築圖則為基礎擬備；及
- (b) 大致上與發展項目的外觀一致。

20. ELEVATION PLAN
立面圖

House 18
18 號洋房

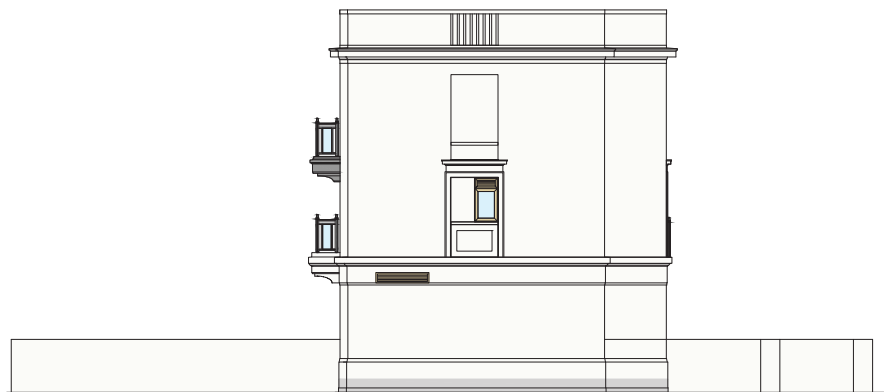


B = Block = 座 H = House = 洋房

Elevation Plan A
立面圖 A



Elevation Plan B
立面圖 B



Authorized Person for the Development has certified that the elevations shown on the plans :-

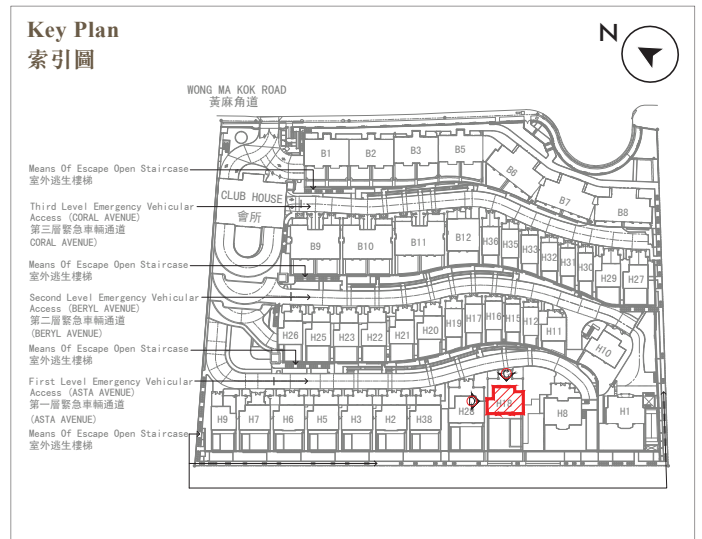
- (a) are prepared on the basis of the approved Building Plans for the Development as of 8 December 2022 and 6 June 2023; and
- (b) are in general accordance with the outward appearance of the Development.

發展項目的認可人士已證明此等圖顯示的立面 :-

- (a) 以 2022 年 12 月 8 日及 2023 年 6 月 6 日的情況為準的發展項目的經批准的建築圖則為基礎擬備；及
- (b) 大致上與發展項目的外觀一致。

20. ELEVATION PLAN
立面圖

House 18
18號洋房



B = Block = 座 H = House = 洋房

Elevation Plan C
立面圖 C



Elevation Plan D
立面圖 D



Authorized Person for the Development has certified that the elevations shown on the plans :-

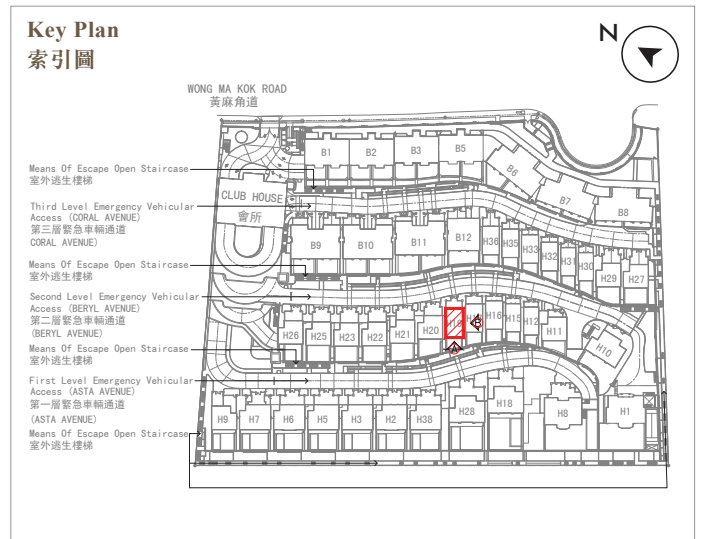
- (a) are prepared on the basis of the approved Building Plans for the Development as of 8 December 2022 and 6 June 2023; and
- (b) are in general accordance with the outward appearance of the Development.

發展項目的認可人士已證明此等圖顯示的立面 :-

- (a) 以 2022 年 12 月 8 日及 2023 年 6 月 6 日的情況為準的發展項目的經批准的建築圖則為基礎擬備；及
- (b) 大致上與發展項目的外觀一致。

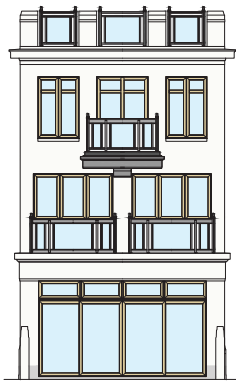
20. ELEVATION PLAN
立面圖

House 19
19號洋房

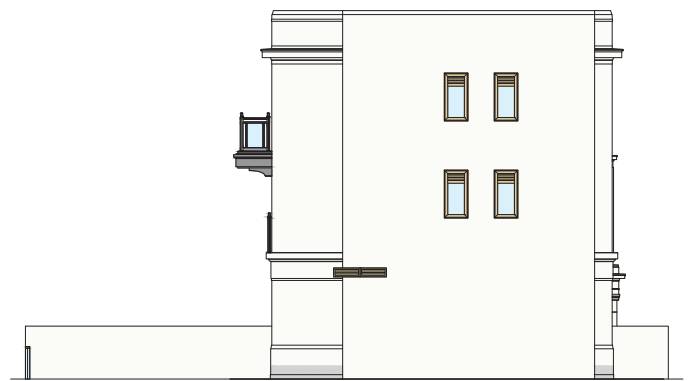


B = Block = 座 H = House = 洋房

Elevation Plan A
立面圖 A



Elevation Plan B
立面圖 B



Authorized Person for the Development has certified that the elevations shown on the plans :-

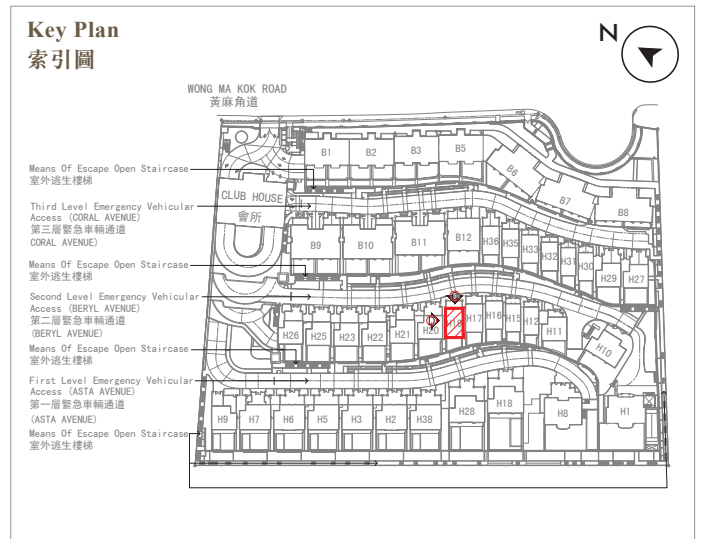
- (a) are prepared on the basis of the approved Building Plans for the Development as of 8 December 2022 and 6 June 2023; and
- (b) are in general accordance with the outward appearance of the Development.

發展項目的認可人士已證明此等圖顯示的立面 :-

- (a) 以 2022 年 12 月 8 日及 2023 年 6 月 6 日的情況為準的發展項目的經批准的建築圖則為基礎擬備；及
- (b) 大致上與發展項目的外觀一致。

20. ELEVATION PLAN
立面圖

House 19
19號洋房

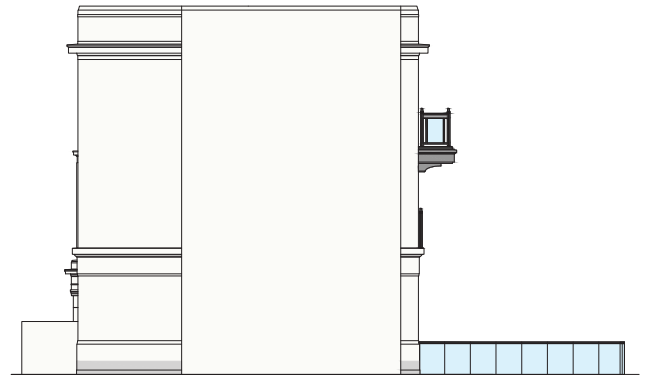


B = Block = 座 H = House = 洋房

Elevation Plan C
立面圖 C



Elevation Plan D
立面圖 D



Authorized Person for the Development has certified that the elevations shown on the plans :-

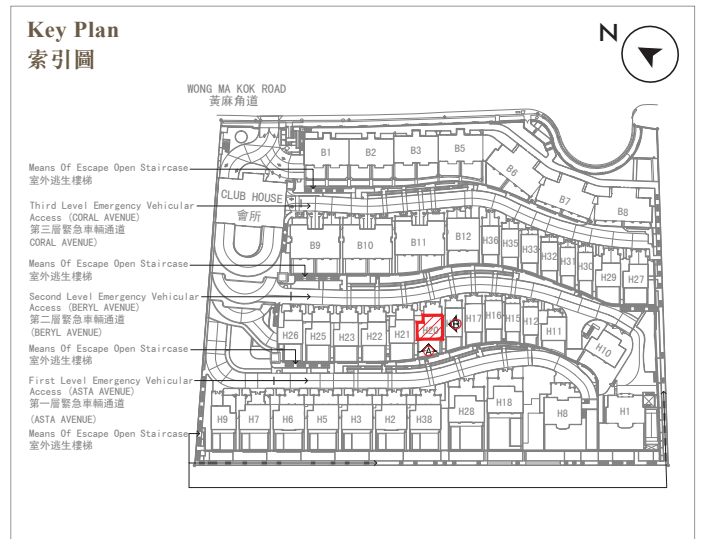
- (a) are prepared on the basis of the approved Building Plans for the Development as of 8 December 2022 and 6 June 2023; and
- (b) are in general accordance with the outward appearance of the Development.

發展項目的認可人士已證明此等圖顯示的立面 :-

- (a) 以 2022 年 12 月 8 日及 2023 年 6 月 6 日的情況為準的發展項目的經批准的建築圖則為基礎擬備；及
- (b) 大致上與發展項目的外觀一致。

20. ELEVATION PLAN
立面圖

House 20
20 號洋房



B = Block = 座 H = House = 洋房

Elevation Plan A
立面圖 A



Elevation Plan B
立面圖 B



Authorized Person for the Development has certified that the elevations shown on the plans :-

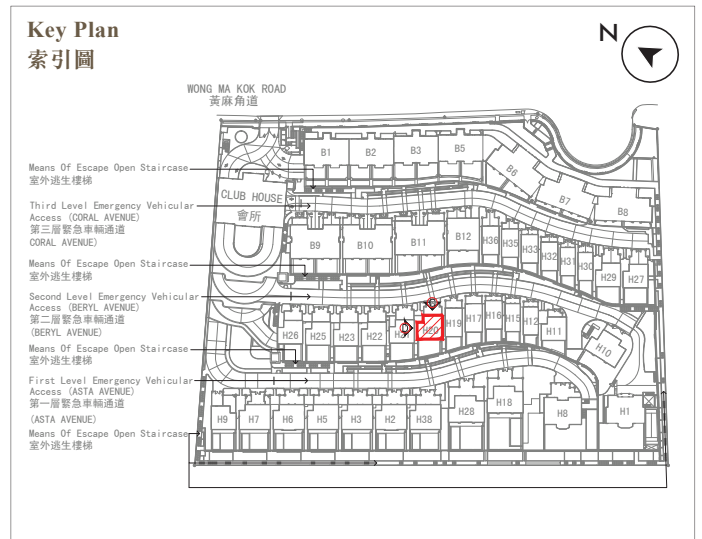
- (a) are prepared on the basis of the approved Building Plans for the Development as of 8 December 2022 and 6 June 2023; and
- (b) are in general accordance with the outward appearance of the Development.

發展項目的認可人士已證明此等圖顯示的立面 :-

- (a) 以 2022 年 12 月 8 日及 2023 年 6 月 6 日的情況為準的發展項目的經批准的建築圖則為基礎擬備；及
- (b) 大致上與發展項目的外觀一致。

20. ELEVATION PLAN
立面圖

House 20
20 號洋房

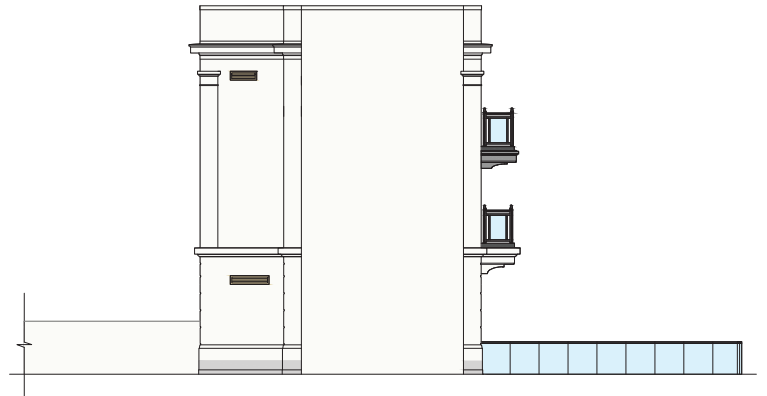


B = Block = 座 H = House = 洋房

Elevation Plan C
立面圖 C



Elevation Plan D
立面圖 D



Authorized Person for the Development has certified that the elevations shown on the plans :-

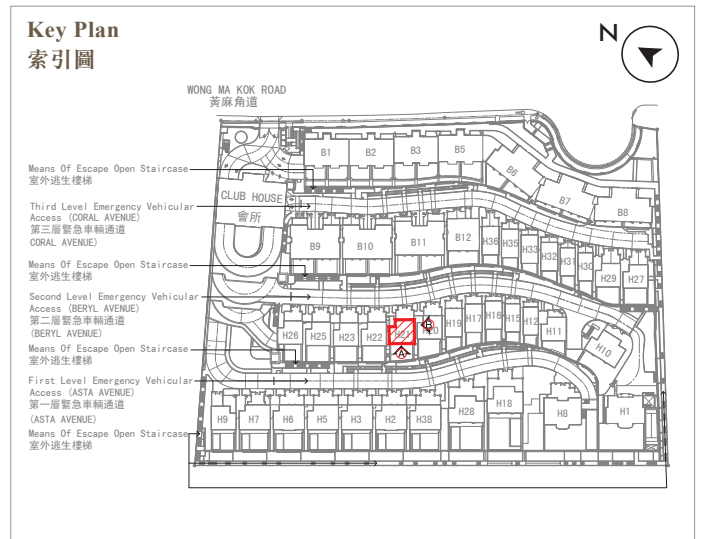
- (a) are prepared on the basis of the approved Building Plans for the Development as of 8 December 2022 and 6 June 2023; and
- (b) are in general accordance with the outward appearance of the Development.

發展項目的認可人士已證明此等圖顯示的立面 :-

- (a) 以 2022 年 12 月 8 日及 2023 年 6 月 6 日的情況為準的發展項目的經批准的建築圖則為基礎擬備；及
- (b) 大致上與發展項目的外觀一致。

20. ELEVATION PLAN
立面圖

House 21
21 號洋房



B = Block = 座 H = House = 洋房

Elevation Plan A
立面圖 A



Elevation Plan B
立面圖 B



Authorized Person for the Development has certified that the elevations shown on the plans :-

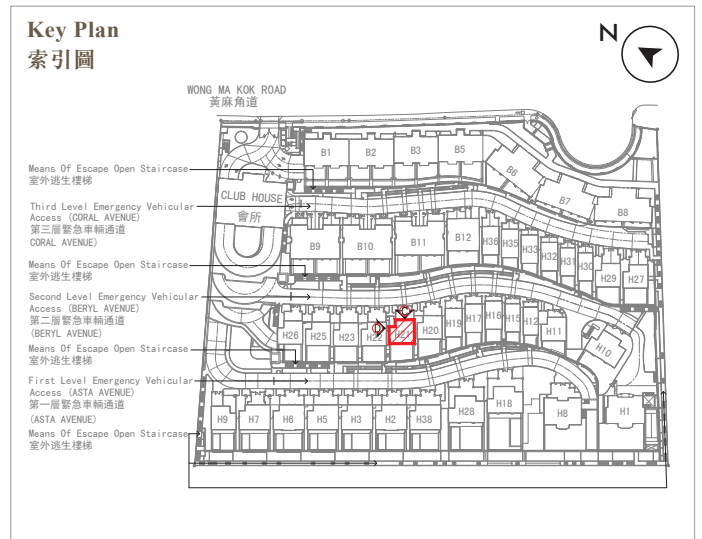
- (a) are prepared on the basis of the approved Building Plans for the Development as of 8 December 2022 and 6 June 2023; and
- (b) are in general accordance with the outward appearance of the Development.

發展項目的認可人士已證明此等圖顯示的立面 :-

- (a) 以 2022 年 12 月 8 日及 2023 年 6 月 6 日的情況為準的發展項目的經批准的建築圖則為基礎擬備；及
- (b) 大致上與發展項目的外觀一致。

20. ELEVATION PLAN
立面圖

House 21
21 號洋房



B = Block = 座 H = House = 洋房

Elevation Plan C
立面圖 C



Elevation Plan D
立面圖 D



Authorized Person for the Development has certified that the elevations shown on the plans :-

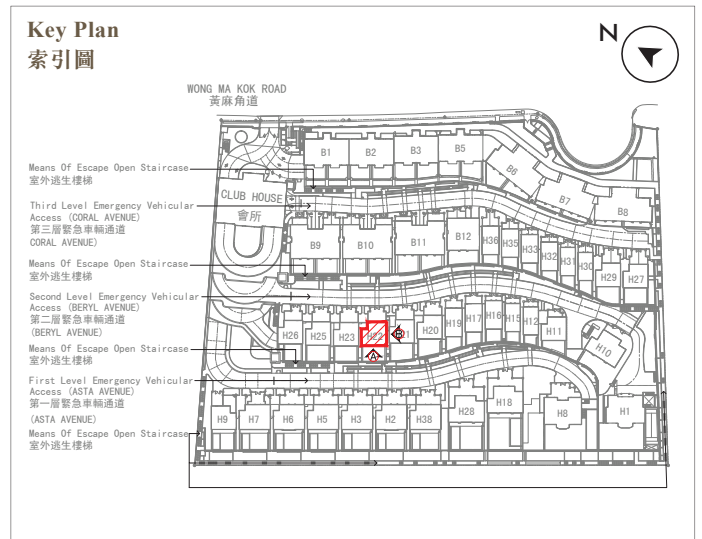
- (a) are prepared on the basis of the approved Building Plans for the Development as of 8 December 2022 and 6 June 2023; and
- (b) are in general accordance with the outward appearance of the Development.

發展項目的認可人士已證明此等圖顯示的立面 :-

- (a) 以 2022 年 12 月 8 日及 2023 年 6 月 6 日的情況為準的發展項目的經批准的建築圖則為基礎擬備；及
- (b) 大致上與發展項目的外觀一致。

20. ELEVATION PLAN
立面圖

House 22
22 號洋房



B = Block = 座 H = House = 洋房

Elevation Plan A
立面圖 A



Elevation Plan B
立面圖 B



Authorized Person for the Development has certified that the elevations shown on the plans :-

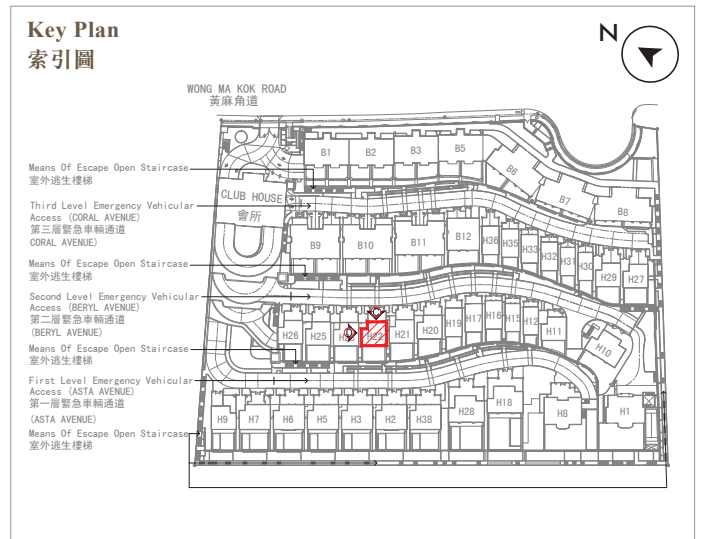
- (a) are prepared on the basis of the approved Building Plans for the Development as of 8 December 2022 and 6 June 2023; and
- (b) are in general accordance with the outward appearance of the Development.

發展項目的認可人士已證明此等圖顯示的立面 :-

- (a) 以 2022 年 12 月 8 日及 2023 年 6 月 6 日的情況為準的發展項目的經批准的建築圖則為基礎擬備；及
- (b) 大致上與發展項目的外觀一致。

20. ELEVATION PLAN
立面圖

House 22
22 號洋房

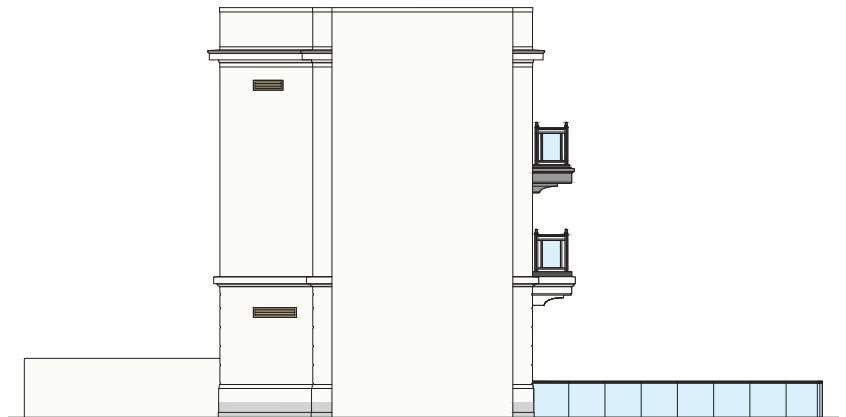


B = Block = 座 H = House = 洋房

Elevation Plan C
立面圖 C



Elevation Plan D
立面圖 D



Authorized Person for the Development has certified that the elevations shown on the plans :-

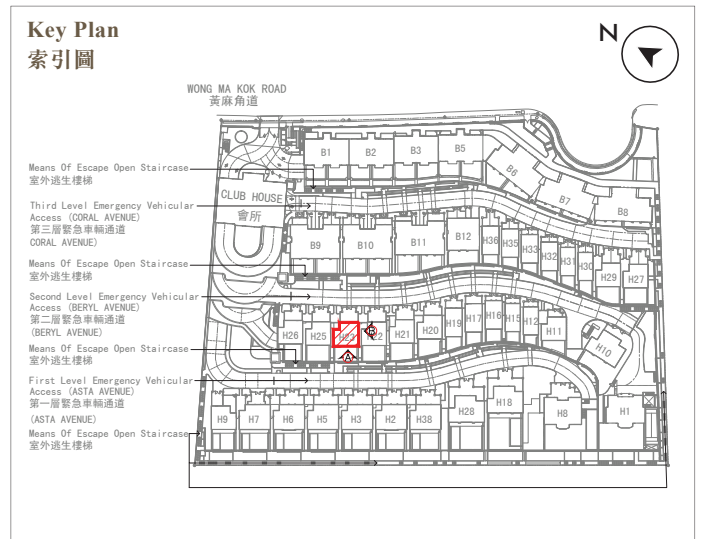
- (a) are prepared on the basis of the approved Building Plans for the Development as of 8 December 2022 and 6 June 2023; and
- (b) are in general accordance with the outward appearance of the Development.

發展項目的認可人士已證明此等圖顯示的立面 :-

- (a) 以 2022 年 12 月 8 日及 2023 年 6 月 6 日的情況為準的發展項目的經批准的建築圖則為基礎擬備；及
- (b) 大致上與發展項目的外觀一致。

20. ELEVATION PLAN
立面圖

House 23
23 號洋房



B = Block = 座 H = House = 洋房

Elevation Plan A
立面圖 A



Elevation Plan B
立面圖 B



Authorized Person for the Development has certified that the elevations shown on the plans :-

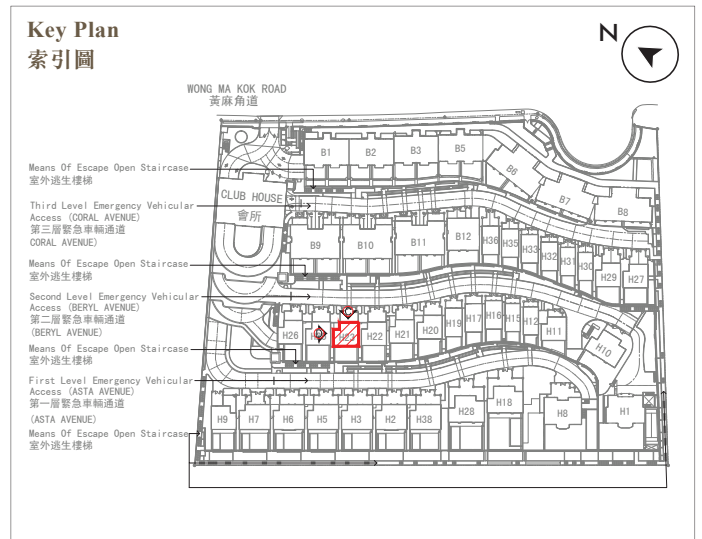
- (a) are prepared on the basis of the approved Building Plans for the Development as of 8 December 2022 and 6 June 2023; and
- (b) are in general accordance with the outward appearance of the Development.

發展項目的認可人士已證明此等圖顯示的立面 :-

- (a) 以 2022 年 12 月 8 日及 2023 年 6 月 6 日的情況為準的發展項目的經批准的建築圖則為基礎擬備；及
- (b) 大致上與發展項目的外觀一致。

20. ELEVATION PLAN
立面圖

House 23
23 號洋房

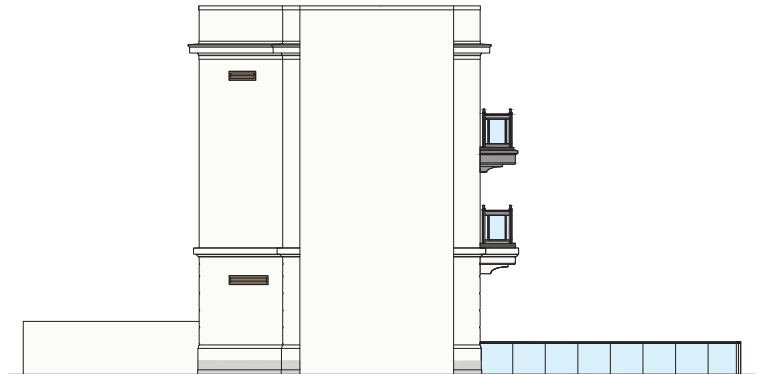


B = Block = 座 H = House = 洋房

Elevation Plan C
立面圖 C



Elevation Plan D
立面圖 D



Authorized Person for the Development has certified that the elevations shown on the plans :-

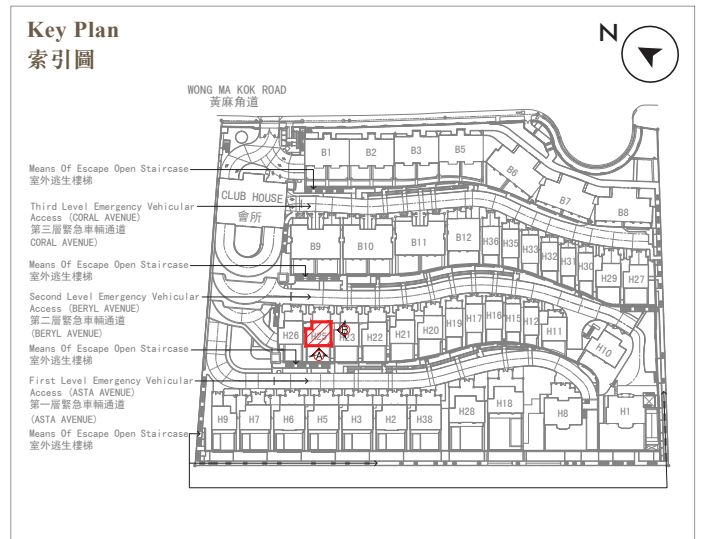
- (a) are prepared on the basis of the approved Building Plans for the Development as of 8 December 2022 and 6 June 2023; and
- (b) are in general accordance with the outward appearance of the Development.

發展項目的認可人士已證明此等圖顯示的立面 :-

- (a) 以 2022 年 12 月 8 日及 2023 年 6 月 6 日的情況為準的發展項目的經批准的建築圖則為基礎擬備；及
- (b) 大致上與發展項目的外觀一致。

20. ELEVATION PLAN
立面圖

House 25
25 號洋房



B = Block = 座 H = House = 洋房

Elevation Plan A
立面圖 A



Elevation Plan B
立面圖 B



Authorized Person for the Development has certified that the elevations shown on the plans :-

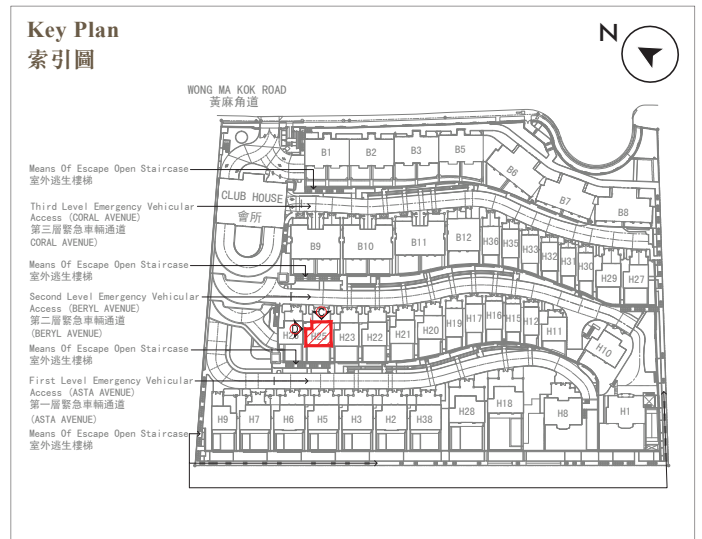
- (a) are prepared on the basis of the approved Building Plans for the Development as of 8 December 2022 and 6 June 2023; and
- (b) are in general accordance with the outward appearance of the Development.

發展項目的認可人士已證明此等圖顯示的立面 :-

- (a) 以 2022 年 12 月 8 日及 2023 年 6 月 6 日的情況為準的發展項目的經批准的建築圖則為基礎擬備；及
- (b) 大致上與發展項目的外觀一致。

20. ELEVATION PLAN
立面圖

House 25
25 號洋房

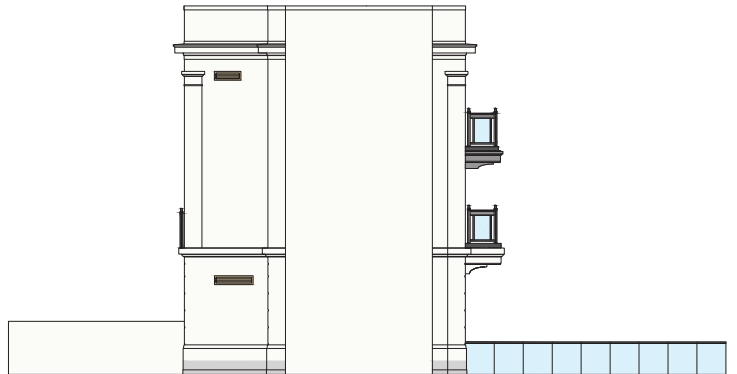


B = Block = 座 H = House = 洋房

Elevation Plan C
立面圖 C



Elevation Plan D
立面圖 D



Authorized Person for the Development has certified that the elevations shown on the plans :-

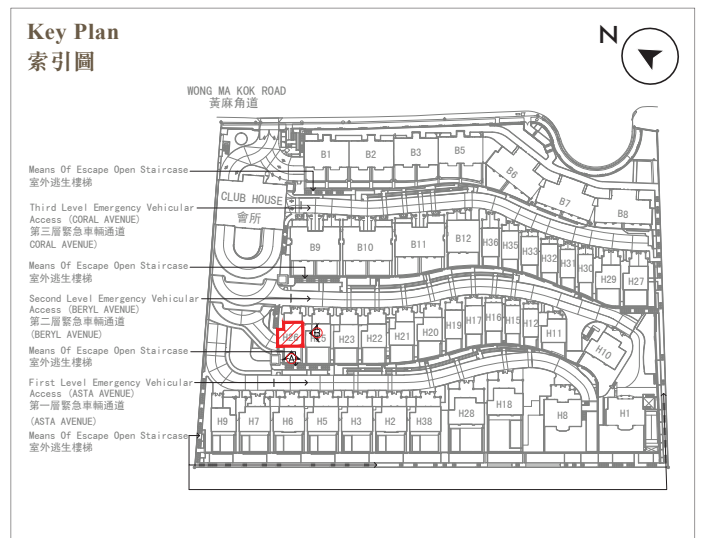
- (a) are prepared on the basis of the approved Building Plans for the Development as of 8 December 2022 and 6 June 2023; and
- (b) are in general accordance with the outward appearance of the Development.

發展項目的認可人士已證明此等圖顯示的立面 :-

- (a) 以 2022 年 12 月 8 日及 2023 年 6 月 6 日的情況為準的發展項目的經批准的建築圖則為基礎擬備；及
- (b) 大致上與發展項目的外觀一致。

20. ELEVATION PLAN
立面圖

House 26
26 號洋房



B = Block = 座 H = House = 洋房

Elevation Plan A
立面圖 A



Elevation Plan B
立面圖 B



Authorized Person for the Development has certified that the elevations shown on the plans :-

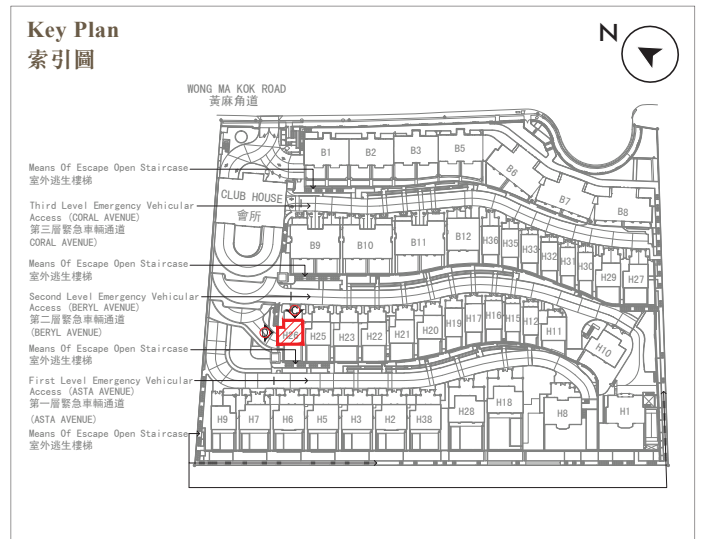
- (a) are prepared on the basis of the approved Building Plans for the Development as of 8 December 2022 and 6 June 2023; and
- (b) are in general accordance with the outward appearance of the Development.

發展項目的認可人士已證明此等圖顯示的立面 :-

- (a) 以 2022 年 12 月 8 日及 2023 年 6 月 6 日的情況為準的發展項目的經批准的建築圖則為基礎擬備；及
- (b) 大致上與發展項目的外觀一致。

20. ELEVATION PLAN
立面圖

House 26
26 號洋房

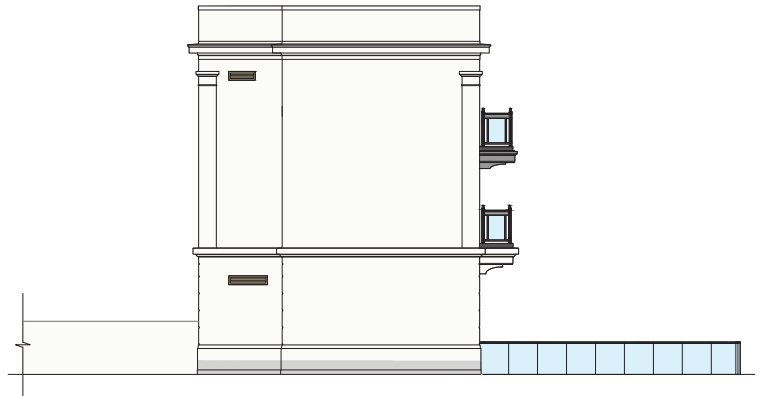


B = Block = 座 H = House = 洋房

Elevation Plan C
立面圖 C



Elevation Plan D
立面圖 D



Authorized Person for the Development has certified that the elevations shown on the plans :-

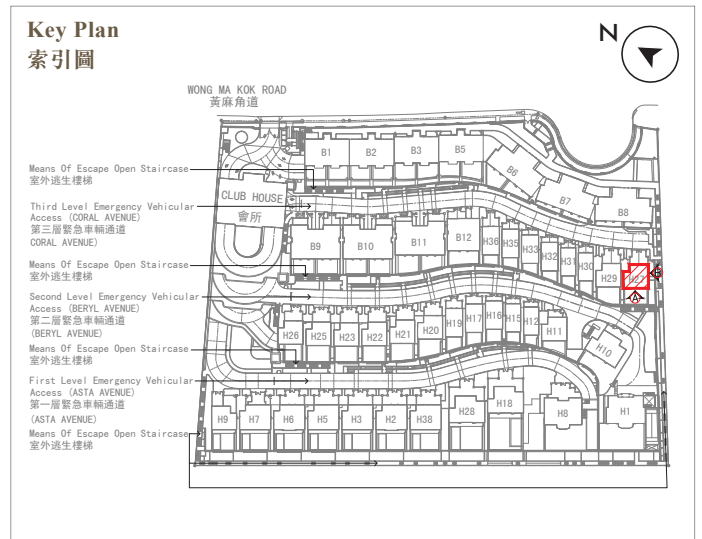
- (a) are prepared on the basis of the approved Building Plans for the Development as of 8 December 2022 and 6 June 2023; and
- (b) are in general accordance with the outward appearance of the Development.

發展項目的認可人士已證明此等圖顯示的立面 :-

- (a) 以 2022 年 12 月 8 日及 2023 年 6 月 6 日的情況為準的發展項目的經批准的建築圖則為基礎擬備；及
- (b) 大致上與發展項目的外觀一致。

20. ELEVATION PLAN
立面圖

House 27
27 號洋房

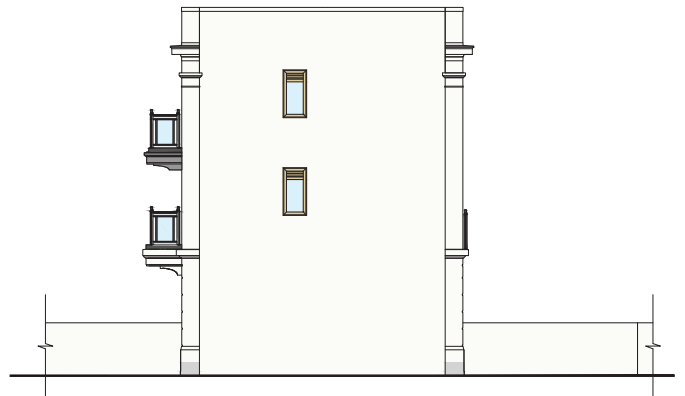


B = Block = 座 H = House = 洋房

Elevation Plan A
立面圖 A



Elevation Plan B
立面圖 B



Authorized Person for the Development has certified that the elevations shown on the plans :-

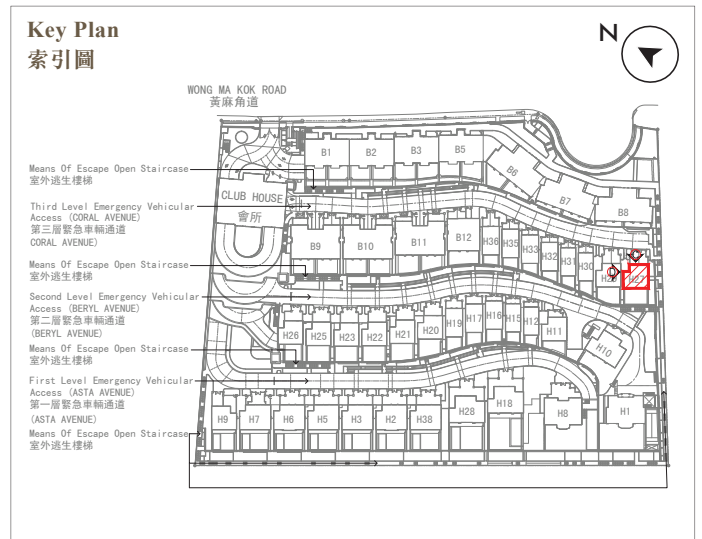
- (a) are prepared on the basis of the approved Building Plans for the Development as of 8 December 2022 and 6 June 2023; and
- (b) are in general accordance with the outward appearance of the Development.

發展項目的認可人士已證明此等圖顯示的立面 :-

- (a) 以 2022 年 12 月 8 日及 2023 年 6 月 6 日的情況為準的發展項目的經批准的建築圖則為基礎擬備；及
- (b) 大致上與發展項目的外觀一致。

20. ELEVATION PLAN
立面圖

House 27
27 號洋房



B = Block = 座 H = House = 洋房

Elevation Plan C
立面圖 C



Elevation Plan D
立面圖 D



Authorized Person for the Development has certified that the elevations shown on the plans :-

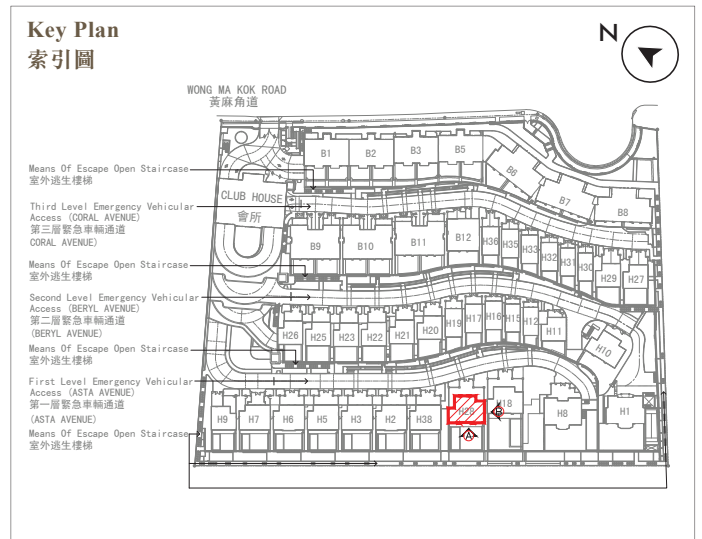
- (a) are prepared on the basis of the approved Building Plans for the Development as of 8 December 2022 and 6 June 2023; and
- (b) are in general accordance with the outward appearance of the Development.

發展項目的認可人士已證明此等圖顯示的立面 :-

- (a) 以 2022 年 12 月 8 日及 2023 年 6 月 6 日的情況為準的發展項目的經批准的建築圖則為基礎擬備；及
- (b) 大致上與發展項目的外觀一致。

20. ELEVATION PLAN
立面圖

House 28
28 號洋房

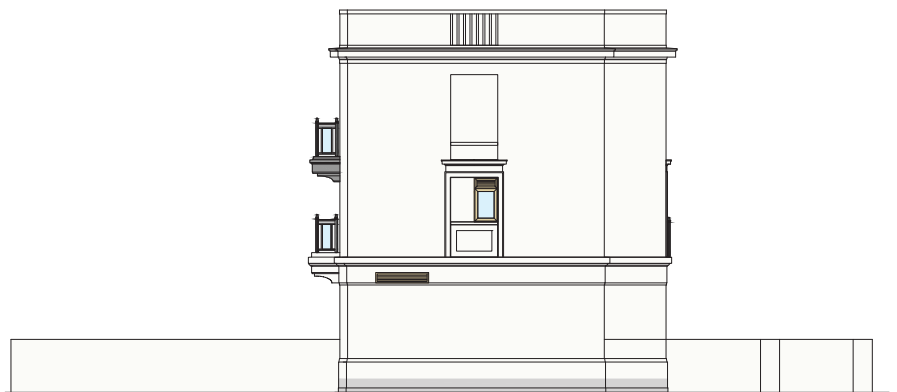


B = Block = 座 H = House = 洋房

Elevation Plan A
立面圖 A



Elevation Plan B
立面圖 B



Authorized Person for the Development has certified that the elevations shown on the plans :-

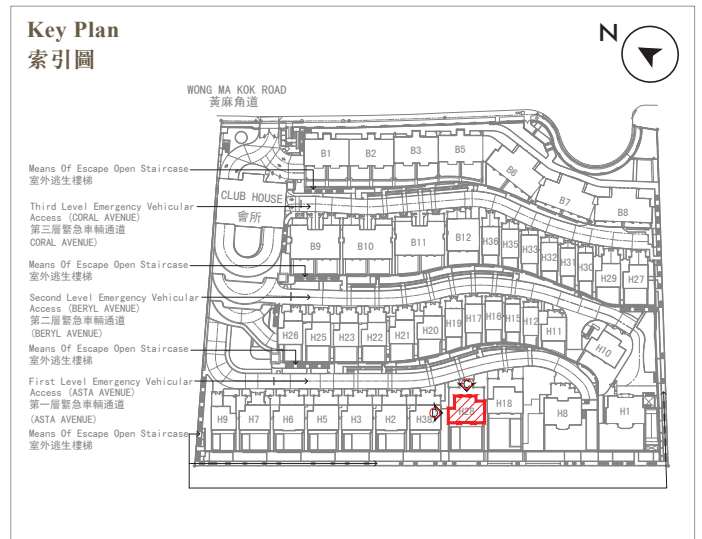
- (a) are prepared on the basis of the approved Building Plans for the Development as of 8 December 2022 and 6 June 2023; and
- (b) are in general accordance with the outward appearance of the Development.

發展項目的認可人士已證明此等圖顯示的立面 :-

- (a) 以 2022 年 12 月 8 日及 2023 年 6 月 6 日的情況為準的發展項目的經批准的建築圖則為基礎擬備；及
- (b) 大致上與發展項目的外觀一致。

20. ELEVATION PLAN
立面圖

House 28
28 號洋房



B = Block = 座 H = House = 洋房

Elevation Plan C
立面圖 C



Elevation Plan D
立面圖 D



Authorized Person for the Development has certified that the elevations shown on the plans :-

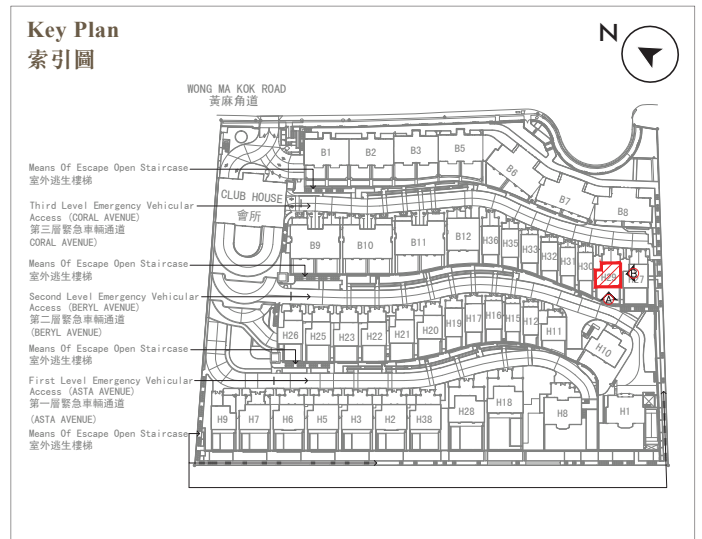
- (a) are prepared on the basis of the approved Building Plans for the Development as of 8 December 2022 and 6 June 2023; and
- (b) are in general accordance with the outward appearance of the Development.

發展項目的認可人士已證明此等圖顯示的立面 :-

- (a) 以 2022 年 12 月 8 日及 2023 年 6 月 6 日的情況為準的發展項目的經批准的建築圖則為基礎擬備；及
- (b) 大致上與發展項目的外觀一致。

20. ELEVATION PLAN
立面圖

House 29
29號洋房



B = Block = 座 H = House = 洋房

Elevation Plan A
立面圖 A



Elevation Plan B
立面圖 B



Authorized Person for the Development has certified that the elevations shown on the plans :-

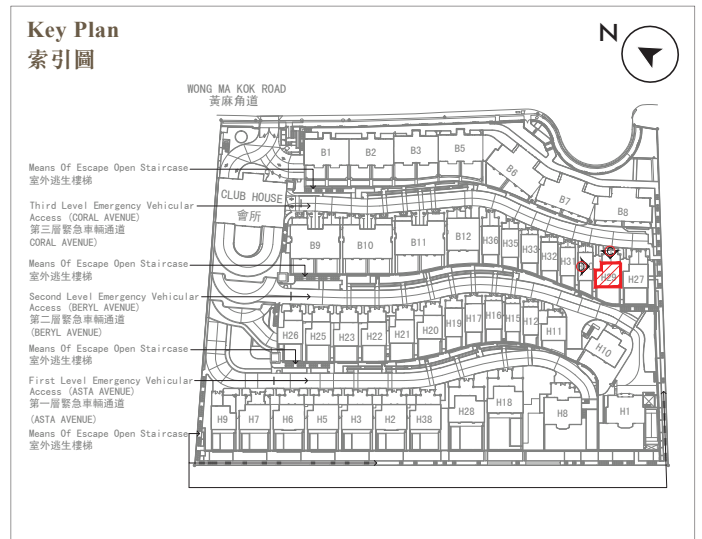
- (a) are prepared on the basis of the approved Building Plans for the Development as of 8 December 2022 and 6 June 2023; and
- (b) are in general accordance with the outward appearance of the Development.

發展項目的認可人士已證明此等圖顯示的立面 :-

- (a) 以 2022 年 12 月 8 日及 2023 年 6 月 6 日的情況為準的發展項目的經批准的建築圖則為基礎擬備；及
- (b) 大致上與發展項目的外觀一致。

20. ELEVATION PLAN
立面圖

House 29
29 號洋房

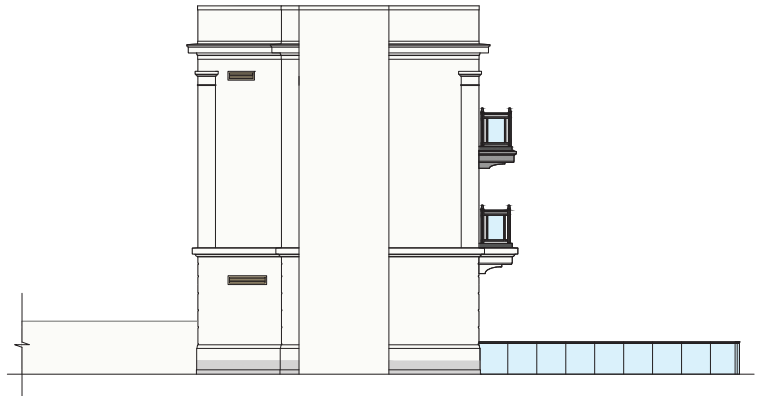


B = Block = 座 H = House = 洋房

Elevation Plan C
立面圖 C



Elevation Plan D
立面圖 D



Authorized Person for the Development has certified that the elevations shown on the plans :-

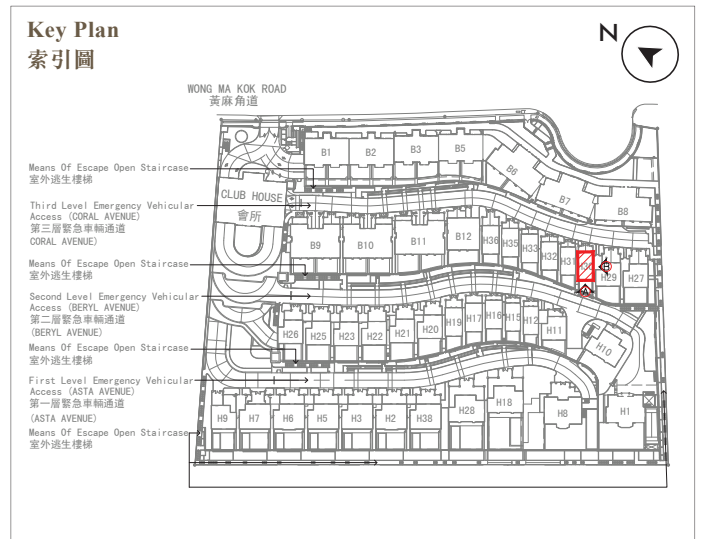
- (a) are prepared on the basis of the approved Building Plans for the Development as of 8 December 2022 and 6 June 2023; and
- (b) are in general accordance with the outward appearance of the Development.

發展項目的認可人士已證明此等圖顯示的立面 :-

- (a) 以 2022 年 12 月 8 日及 2023 年 6 月 6 日的情況為準的發展項目的經批准的建築圖則為基礎擬備；及
- (b) 大致上與發展項目的外觀一致。

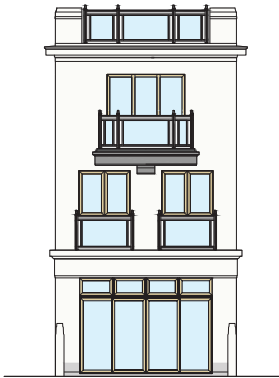
20. ELEVATION PLAN
立面圖

House 30
30 號洋房



B = Block = 座 H = House = 洋房

Elevation Plan A
立面圖 A



Elevation Plan B
立面圖 B



Authorized Person for the Development has certified that the elevations shown on the plans :-

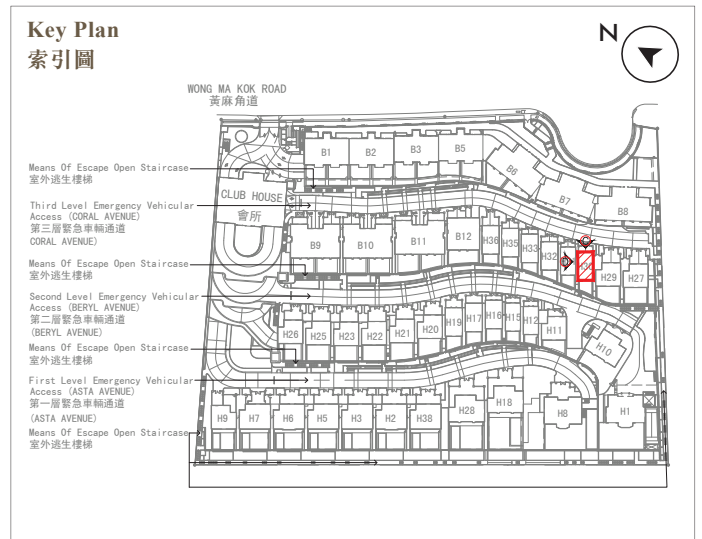
- (a) are prepared on the basis of the approved Building Plans for the Development as of 8 December 2022 and 6 June 2023; and
- (b) are in general accordance with the outward appearance of the Development.

發展項目的認可人士已證明此等圖顯示的立面 :-

- (a) 以 2022 年 12 月 8 日及 2023 年 6 月 6 日的情況為準的發展項目的經批准的建築圖則為基礎擬備；及
- (b) 大致上與發展項目的外觀一致。

20. ELEVATION PLAN
立面圖

House 30
30 號洋房

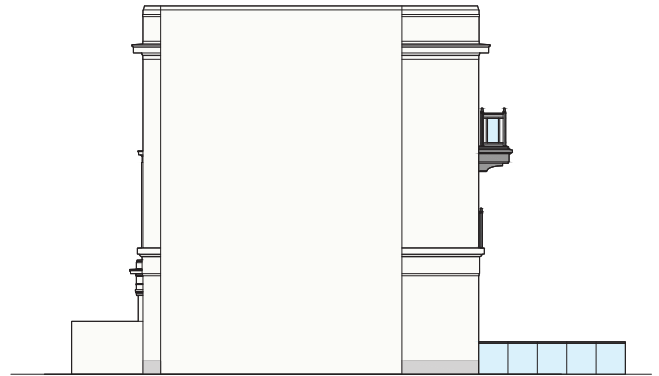


B = Block = 座 H = House = 洋房

Elevation Plan C
立面圖 C



Elevation Plan D
立面圖 D



Authorized Person for the Development has certified that the elevations shown on the plans :-

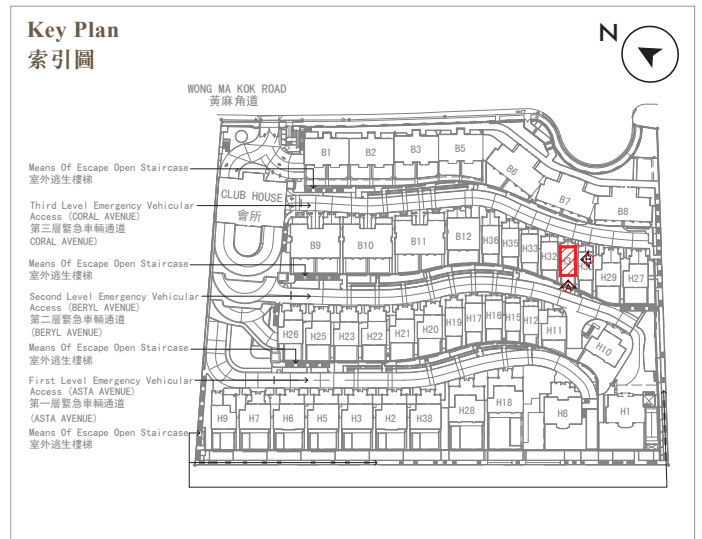
- (a) are prepared on the basis of the approved Building Plans for the Development as of 8 December 2022 and 6 June 2023; and
- (b) are in general accordance with the outward appearance of the Development.

發展項目的認可人士已證明此等圖顯示的立面 :-

- (a) 以 2022 年 12 月 8 日及 2023 年 6 月 6 日的情況為準的發展項目的經批准的建築圖則為基礎擬備；及
- (b) 大致上與發展項目的外觀一致。

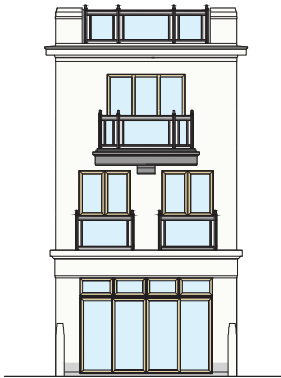
20. ELEVATION PLAN
立面圖

House 31
31 號洋房



B = Block = 座 H = House = 洋房

Elevation Plan A
立面圖 A



Elevation Plan B
立面圖 B



Authorized Person for the Development has certified that the elevations shown on the plans :-

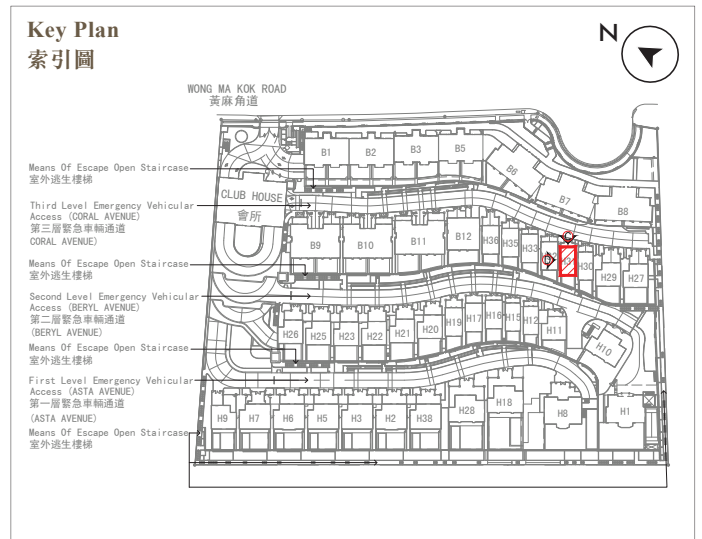
- (a) are prepared on the basis of the approved Building Plans for the Development as of 8 December 2022 and 6 June 2023; and
- (b) are in general accordance with the outward appearance of the Development.

發展項目的認可人士已證明此等圖顯示的立面 :-

- (a) 以 2022 年 12 月 8 日及 2023 年 6 月 6 日的情況為準的發展項目的經批准的建築圖則為基礎擬備；及
- (b) 大致上與發展項目的外觀一致。

20. ELEVATION PLAN
立面圖

House 31
31 號洋房

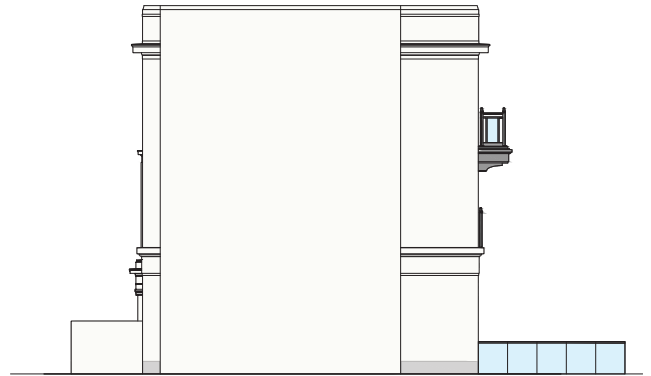


B = Block = 座 H = House = 洋房

Elevation Plan C
立面圖 C



Elevation Plan D
立面圖 D



Authorized Person for the Development has certified that the elevations shown on the plans :-

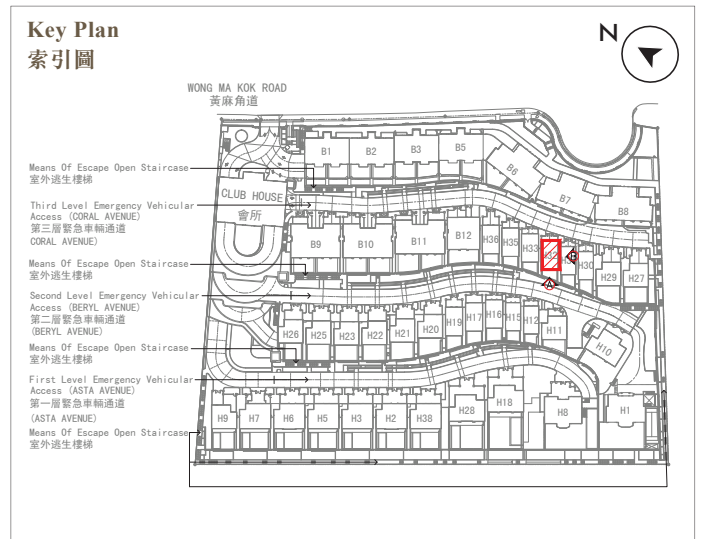
- (a) are prepared on the basis of the approved Building Plans for the Development as of 8 December 2022 and 6 June 2023; and
- (b) are in general accordance with the outward appearance of the Development.

發展項目的認可人士已證明此等圖顯示的立面 :-

- (a) 以 2022 年 12 月 8 日及 2023 年 6 月 6 日的情況為準的發展項目的經批准的建築圖則為基礎擬備；及
- (b) 大致上與發展項目的外觀一致。

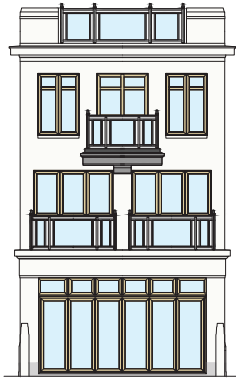
20. ELEVATION PLAN
立面圖

House 32
32 號洋房



B = Block = 座 H = House = 洋房

Elevation Plan A
立面圖 A



Elevation Plan B
立面圖 B



Authorized Person for the Development has certified that the elevations shown on the plans :-

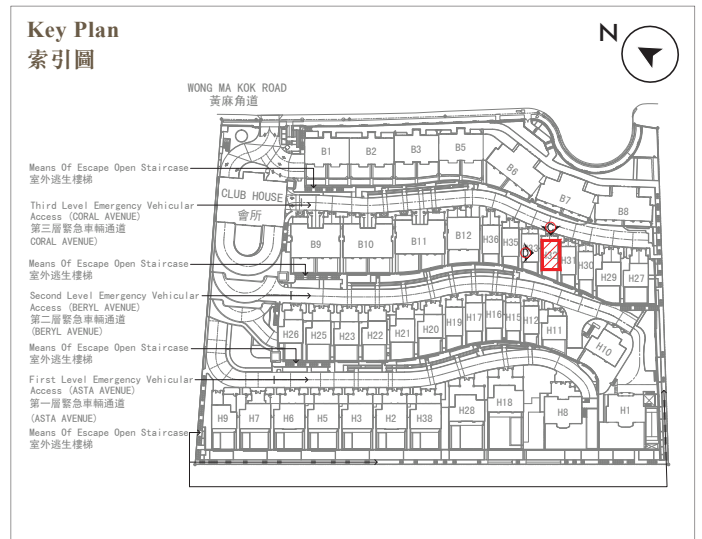
- (a) are prepared on the basis of the approved Building Plans for the Development as of 8 December 2022 and 6 June 2023; and
- (b) are in general accordance with the outward appearance of the Development.

發展項目的認可人士已證明此等圖顯示的立面 :-

- (a) 以 2022 年 12 月 8 日及 2023 年 6 月 6 日的情況為準的發展項目的經批准的建築圖則為基礎擬備；及
- (b) 大致上與發展項目的外觀一致。

20. ELEVATION PLAN
立面圖

House 32
32 號洋房

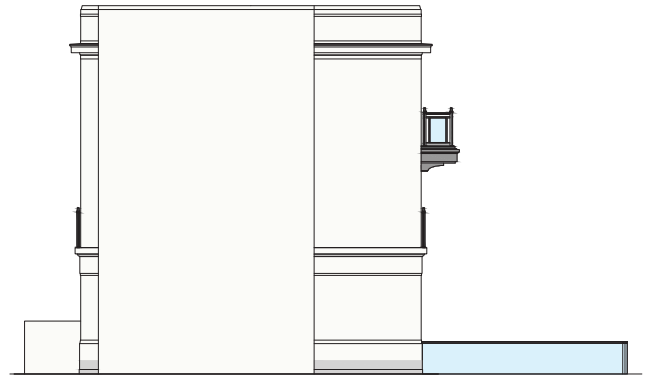


B = Block = 座 H = House = 洋房

Elevation Plan C
立面圖 C



Elevation Plan D
立面圖 D



Authorized Person for the Development has certified that the elevations shown on the plans :-

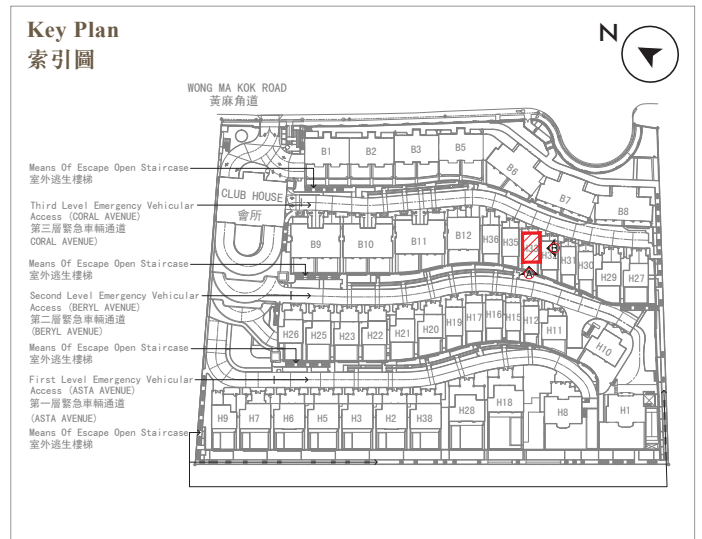
- (a) are prepared on the basis of the approved Building Plans for the Development as of 8 December 2022 and 6 June 2023; and
- (b) are in general accordance with the outward appearance of the Development.

發展項目的認可人士已證明此等圖顯示的立面 :-

- (a) 以 2022 年 12 月 8 日及 2023 年 6 月 6 日的情況為準的發展項目的經批准的建築圖則為基礎擬備；及
- (b) 大致上與發展項目的外觀一致。

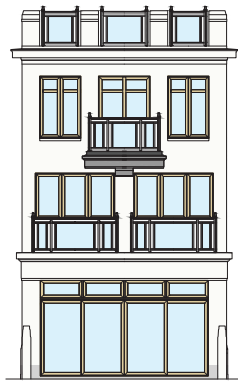
20. ELEVATION PLAN
立面圖

House 33
33 號洋房



B = Block = 座 H = House = 洋房

Elevation Plan A
立面圖 A



Elevation Plan B
立面圖 B



Authorized Person for the Development has certified that the elevations shown on the plans :-

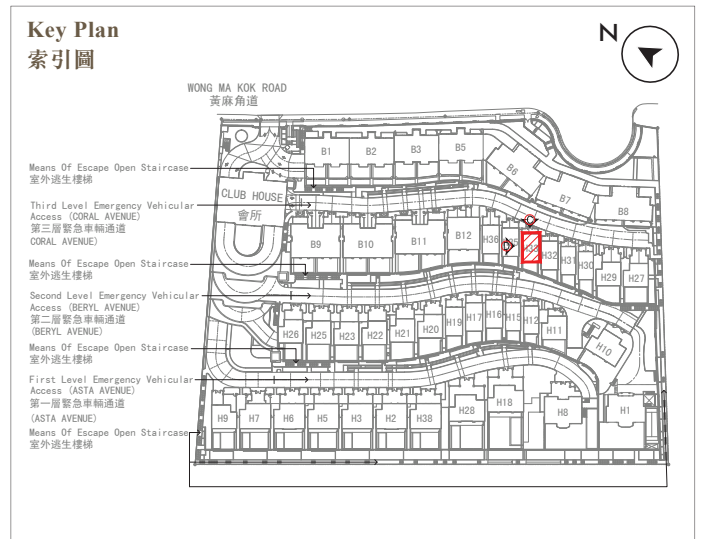
- (a) are prepared on the basis of the approved Building Plans for the Development as of 8 December 2022 and 6 June 2023; and
- (b) are in general accordance with the outward appearance of the Development.

發展項目的認可人士已證明此等圖顯示的立面 :-

- (a) 以 2022 年 12 月 8 日及 2023 年 6 月 6 日的情況為準的發展項目的經批准的建築圖則為基礎擬備；及
- (b) 大致上與發展項目的外觀一致。

20. ELEVATION PLAN
立面圖

House 33
33 號洋房

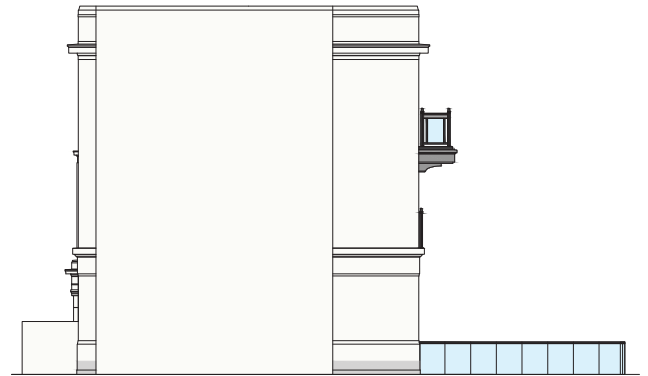


B = Block = 座 H = House = 洋房

Elevation Plan C
立面圖 C



Elevation Plan D
立面圖 D



Authorized Person for the Development has certified that the elevations shown on the plans :-

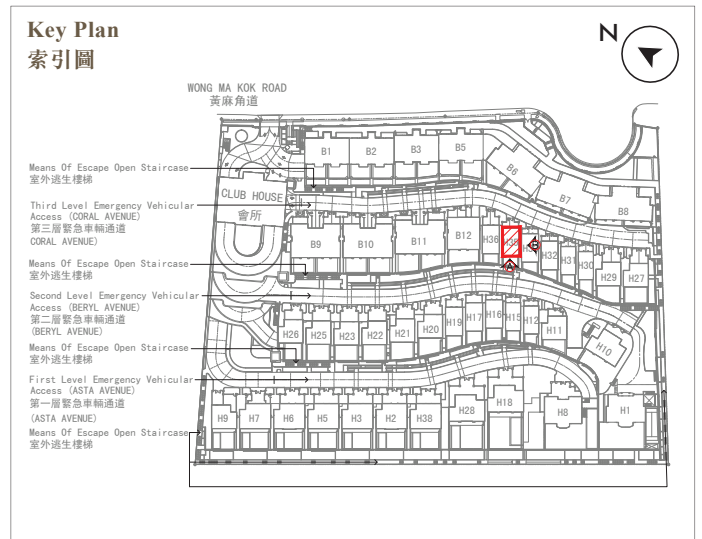
- (a) are prepared on the basis of the approved Building Plans for the Development as of 8 December 2022 and 6 June 2023; and
- (b) are in general accordance with the outward appearance of the Development.

發展項目的認可人士已證明此等圖顯示的立面 :-

- (a) 以 2022 年 12 月 8 日及 2023 年 6 月 6 日的情況為準的發展項目的經批准的建築圖則為基礎擬備；及
- (b) 大致上與發展項目的外觀一致。

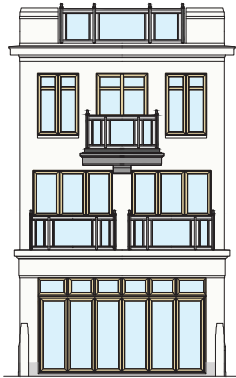
20. ELEVATION PLAN
立面圖

House 35
35 號洋房

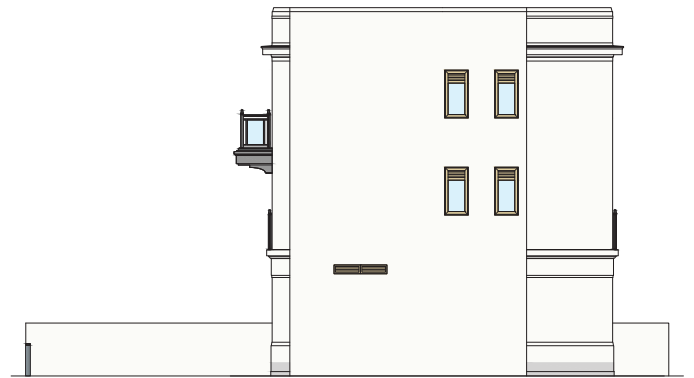


B = Block = 座 H = House = 洋房

Elevation Plan A
立面圖 A



Elevation Plan B
立面圖 B



Authorized Person for the Development has certified that the elevations shown on the plans :-

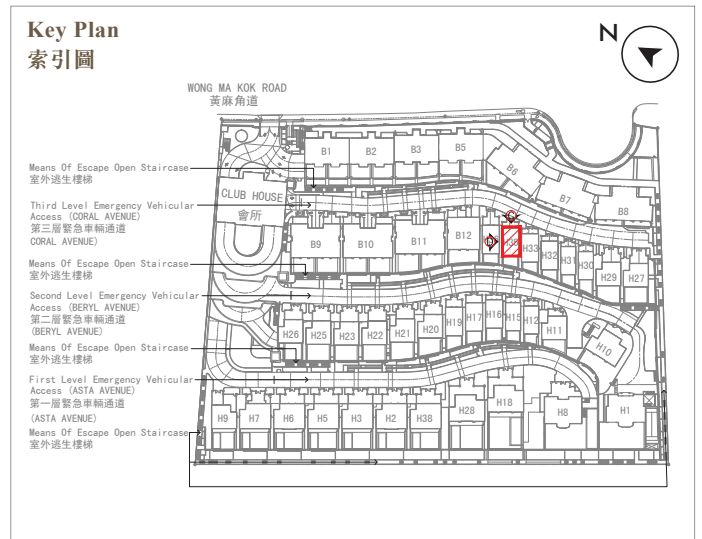
- (a) are prepared on the basis of the approved Building Plans for the Development as of 8 December 2022 and 6 June 2023; and
- (b) are in general accordance with the outward appearance of the Development.

發展項目的認可人士已證明此等圖顯示的立面 :-

- (a) 以 2022 年 12 月 8 日及 2023 年 6 月 6 日的情況為準的發展項目的經批准的建築圖則為基礎擬備；及
- (b) 大致上與發展項目的外觀一致。

20. ELEVATION PLAN
立面圖

House 35
35 號洋房

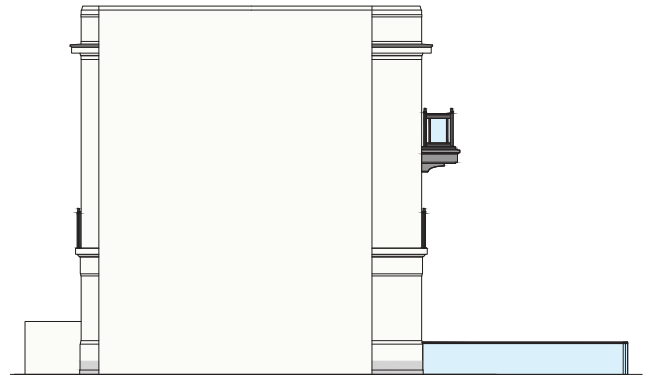


B = Block = 座 H = House = 洋房

Elevation Plan C
立面圖 C



Elevation Plan D
立面圖 D



Authorized Person for the Development has certified that the elevations shown on the plans :-

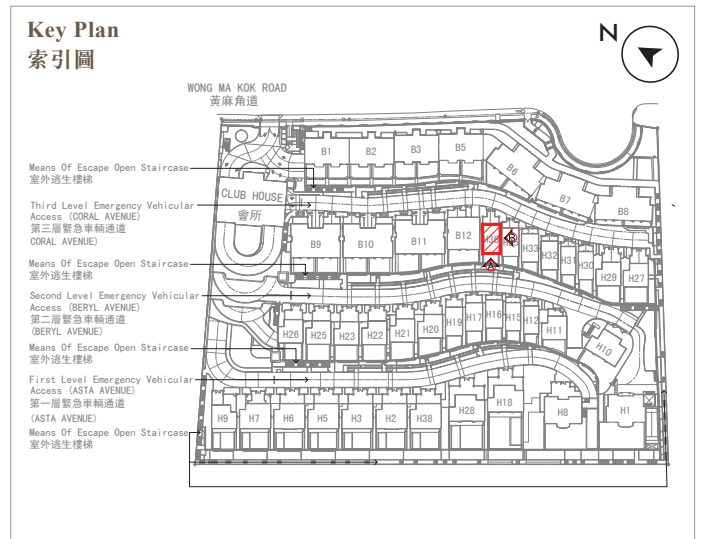
- (a) are prepared on the basis of the approved Building Plans for the Development as of 8 December 2022 and 6 June 2023; and
- (b) are in general accordance with the outward appearance of the Development.

發展項目的認可人士已證明此等圖顯示的立面 :-

- (a) 以 2022 年 12 月 8 日及 2023 年 6 月 6 日的情況為準的發展項目的經批准的建築圖則為基礎擬備；及
- (b) 大致上與發展項目的外觀一致。

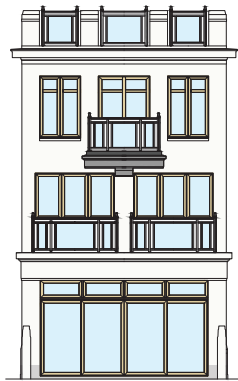
20. ELEVATION PLAN
立面圖

House 36
36 號洋房

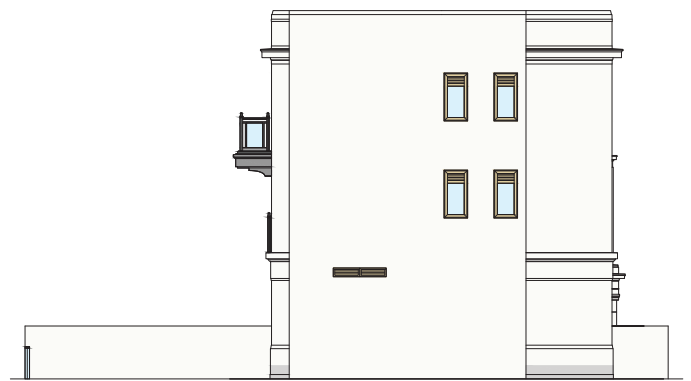


B = Block = 座 H = House = 洋房

Elevation Plan A
立面圖 A



Elevation Plan B
立面圖 B



Authorized Person for the Development has certified that the elevations shown on the plans :-

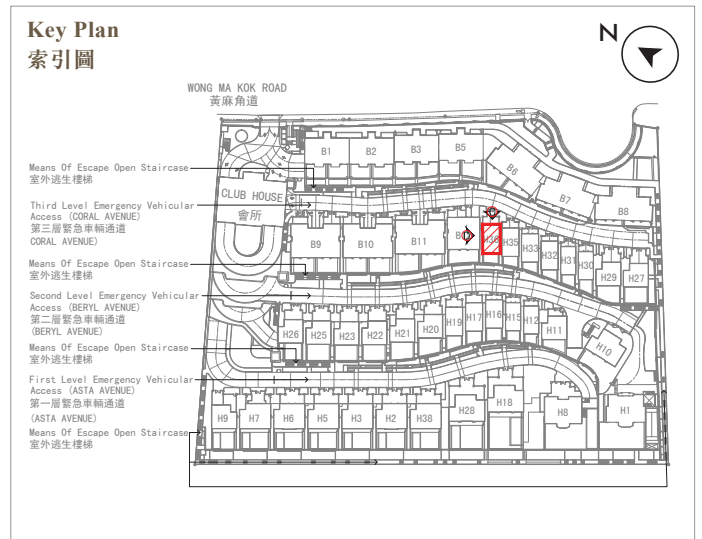
- (a) are prepared on the basis of the approved Building Plans for the Development as of 8 December 2022 and 6 June 2023; and
- (b) are in general accordance with the outward appearance of the Development.

發展項目的認可人士已證明此等圖顯示的立面 :-

- (a) 以 2022 年 12 月 8 日及 2023 年 6 月 6 日的情況為準的發展項目的經批准的建築圖則為基礎擬備；及
- (b) 大致上與發展項目的外觀一致。

20. ELEVATION PLAN
立面圖

House 36
36 號洋房

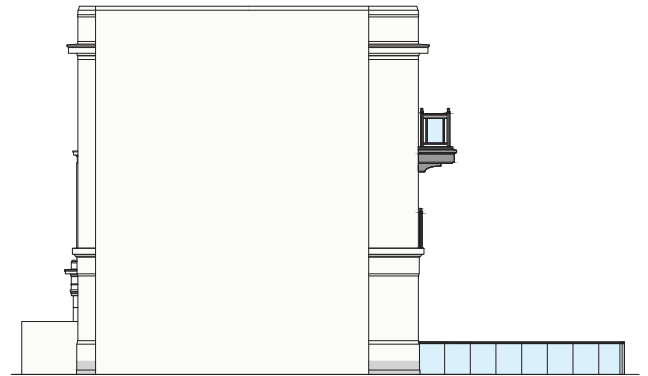


B = Block = 座 H = House = 洋房

Elevation Plan C
立面圖 C



Elevation Plan D
立面圖 D



Authorized Person for the Development has certified that the elevations shown on the plans :-

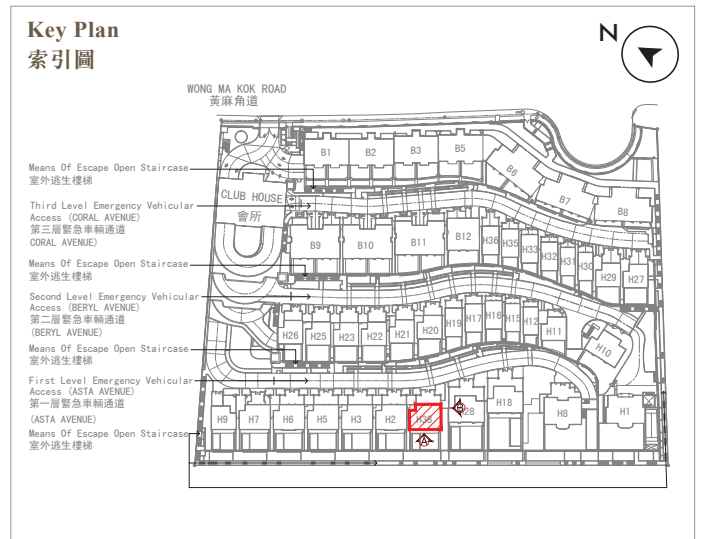
- (a) are prepared on the basis of the approved Building Plans for the Development as of 8 December 2022 and 6 June 2023; and
- (b) are in general accordance with the outward appearance of the Development.

發展項目的認可人士已證明此等圖顯示的立面 :-

- (a) 以 2022 年 12 月 8 日及 2023 年 6 月 6 日的情況為準的發展項目的經批准的建築圖則為基礎擬備；及
- (b) 大致上與發展項目的外觀一致。

20. ELEVATION PLAN
立面圖

House 38
38 號洋房

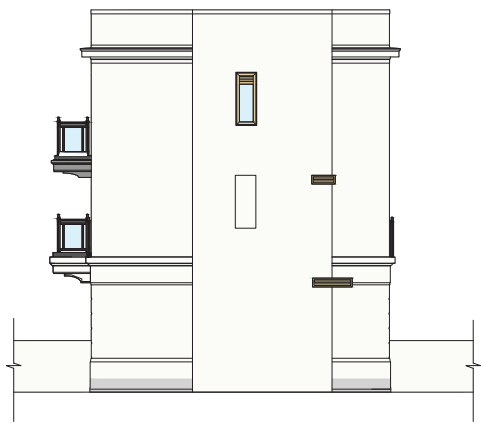


B = Block = 座 H = House = 洋房

Elevation Plan A
立面圖 A



Elevation Plan B
立面圖 B



Authorized Person for the Development has certified that the elevations shown on the plans :-

- (a) are prepared on the basis of the approved Building Plans for the Development as of 8 December 2022 and 6 June 2023; and
- (b) are in general accordance with the outward appearance of the Development.

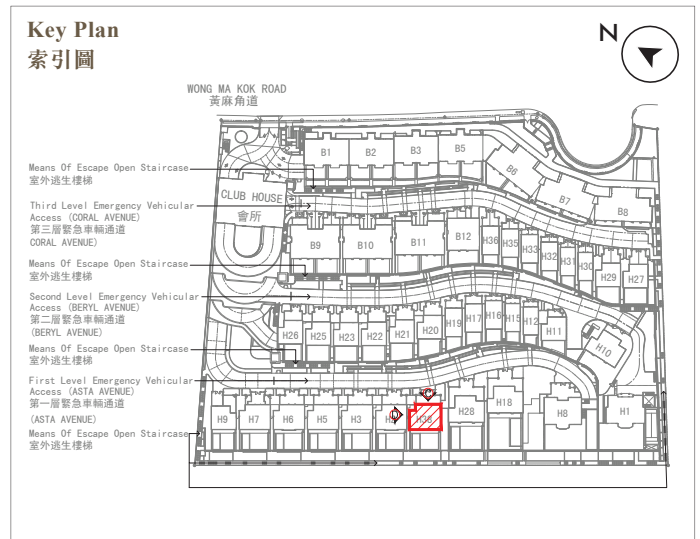
發展項目的認可人士已證明此等圖顯示的立面:-

- (a) 以2022年12月8日及2023年6月6日的情況為準的發展項目的經批准的建築圖則為基礎擬備；及
- (b) 大致上與發展項目的外觀一致。

20. ELEVATION PLAN 立面圖

House 38 38號洋房

Elevation Plan C (As Per Approved General Building Plan) 立面圖 C (根據批准建築圖則)



B = Block = 座 H = House = 洋房

Elevation Plan C (As-is Elevation Plan) 立面圖 C (現狀立面圖)



Elevation Plan D 立面圖 D



Authorized Person for the Development has certified that the elevations shown on the plans :-

- are prepared on the basis of the approved Building Plans for the Development as of 8 December 2022 and 6 June 2023; and
- are in general accordance with the outward appearance of the Development.

Notes:

- Certain part of House 38 has been altered by way of minor works, designated exempted works, or exempted works under the Buildings Ordinance after completion of the Development, the latest condition of which is shown on the relevant elevation plan showing latest elevation. The alteration works are as follows:
 - Alternation of window sub-frame.
- Please refer to same page of this sales brochure in studying items of minor works, designated exempted works or exempted works under the Buildings Ordinance made in this unit as indicated with blue wavy line ().

發展項目的認可人士已證明此等圖顯示的立面:-

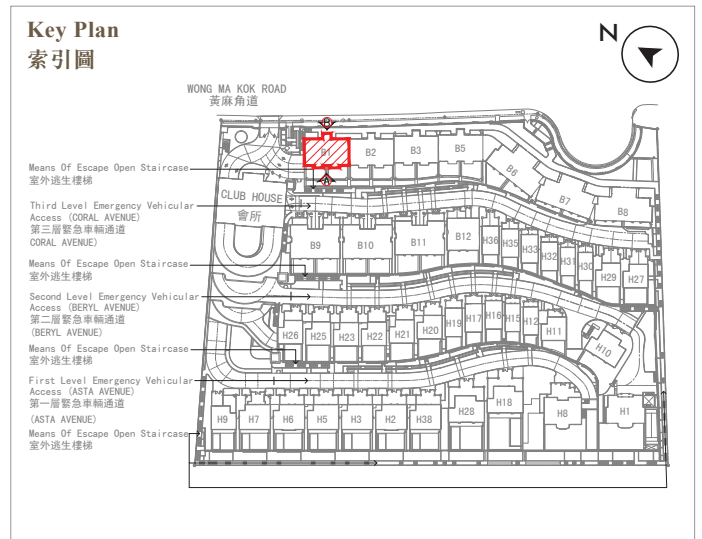
- 以2022年12月8日及2023年6月6日的情況為準的發展項目的經批准的建築圖則為基礎擬備；及
- 大致上與發展項目的外觀一致。

備註：

- 38號洋房某些部份因在發展項目落成後進行小型工程、指定豁免工程或獲《建築物條例》豁免的工程而有所改動，現狀請參閱有關現狀立面圖。該等改動如下：
 - 改動窗的輔助框。
- 請參閱本售樓說明書本頁以協助閱讀本單位以藍色曲線 () 顯示之有關已完成的小型工程、指定豁免工程或獲《建築物條例》豁免的工程。

20. ELEVATION PLAN
立面圖

Block 1
第1座



B = Block = 座 H = House = 洋房

Elevation Plan A
立面圖 A



Elevation Plan B
立面圖 B



Authorized Person for the Development has certified that the elevations shown on the plans :-

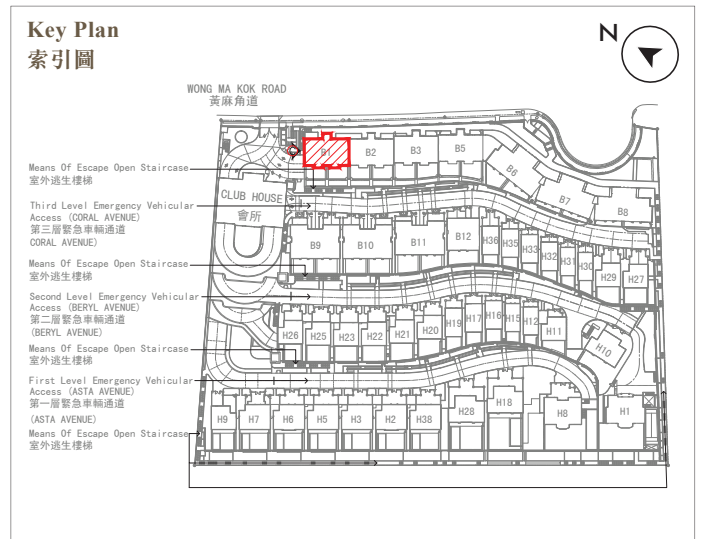
- (a) are prepared on the basis of the approved Building Plans for the Development as of 8 December 2022 and 6 June 2023; and
- (b) are in general accordance with the outward appearance of the Development.

發展項目的認可人士已證明此等圖顯示的立面 :-

- (a) 以 2022 年 12 月 8 日及 2023 年 6 月 6 日的情況為準的發展項目的經批准的建築圖則為基礎擬備；及
- (b) 大致上與發展項目的外觀一致。

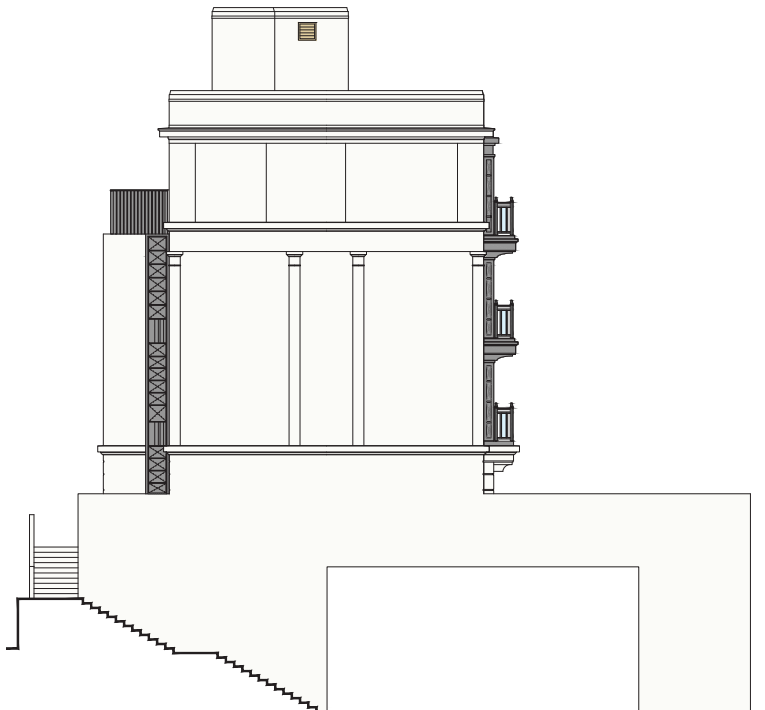
20. ELEVATION PLAN
立面圖

Block 1
第1座



B = Block = 座 H = House = 洋房

Elevation Plan C
立面圖 C



Authorized Person for the Development has certified that the elevations shown on the plans :-

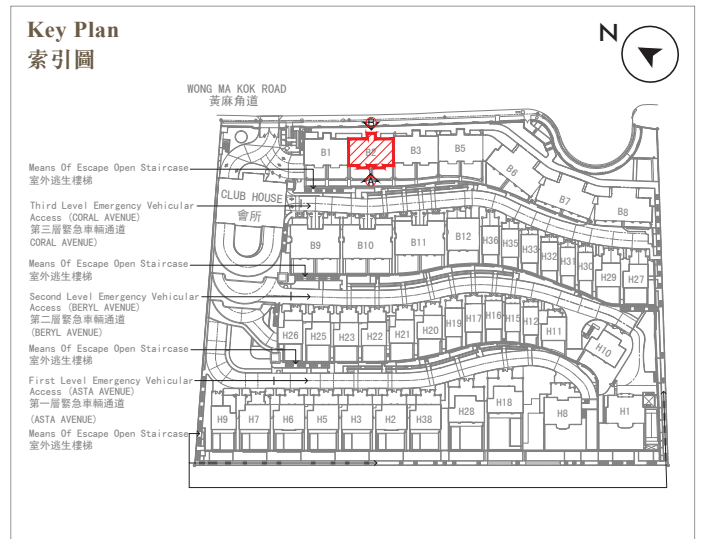
- (a) are prepared on the basis of the approved Building Plans for the Development as of 8 December 2022 and 6 June 2023; and
- (b) are in general accordance with the outward appearance of the Development.

發展項目的認可人士已證明此等圖顯示的立面 :-

- (a) 以 2022 年 12 月 8 日及 2023 年 6 月 6 日的情況為準的發展項目的經批准的建築圖則為基礎擬備；及
- (b) 大致上與發展項目的外觀一致。

20. ELEVATION PLAN
立面圖

Block 2
第2座



B = Block = 座 H = House = 洋房

Elevation Plan A
立面圖 A



Elevation Plan B
立面圖 B



Authorized Person for the Development has certified that the elevations shown on the plans :-

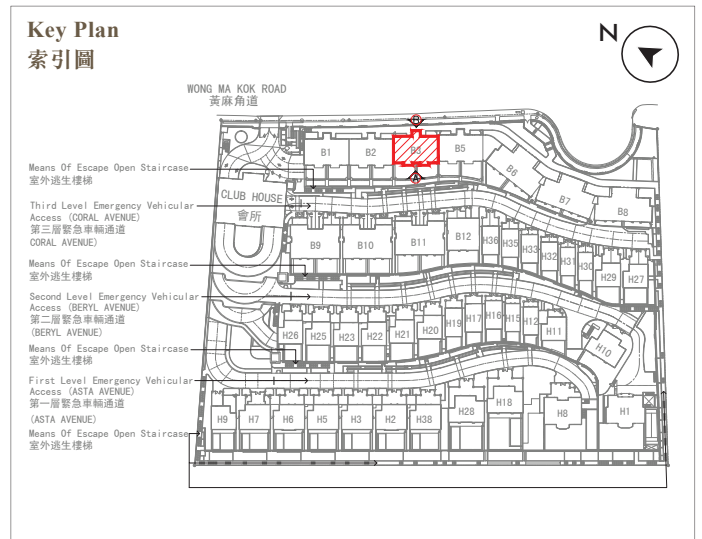
- (a) are prepared on the basis of the approved Building Plans for the Development as of 8 December 2022 and 6 June 2023; and
- (b) are in general accordance with the outward appearance of the Development.

發展項目的認可人士已證明此等圖顯示的立面 :-

- (a) 以 2022 年 12 月 8 日及 2023 年 6 月 6 日的情況為準的發展項目的經批准的建築圖則為基礎擬備；及
- (b) 大致上與發展項目的外觀一致。

20. ELEVATION PLAN
立面圖

Block 3
第3座



B = Block = 座 H = House = 洋房

Elevation Plan A
立面圖 A



Elevation Plan B
立面圖 B



Authorized Person for the Development has certified that the elevations shown on the plans :-

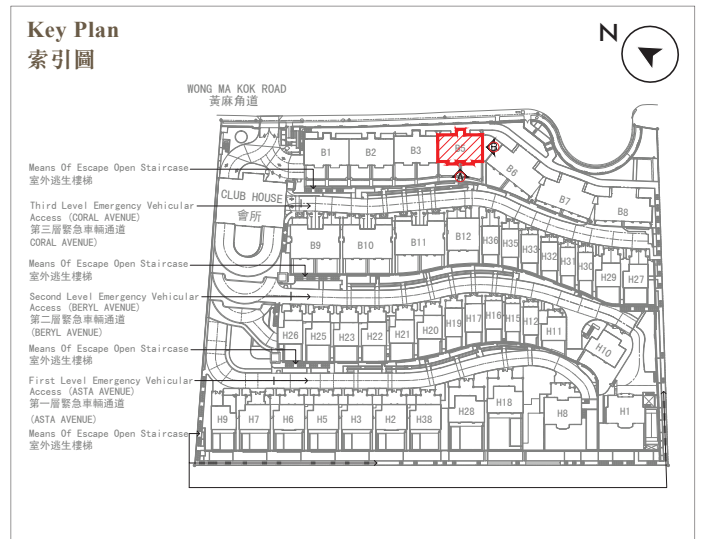
- (a) are prepared on the basis of the approved Building Plans for the Development as of 8 December 2022 and 6 June 2023; and
- (b) are in general accordance with the outward appearance of the Development.

發展項目的認可人士已證明此等圖顯示的立面 :-

- (a) 以 2022 年 12 月 8 日及 2023 年 6 月 6 日的情況為準的發展項目的經批准的建築圖則為基礎擬備；及
- (b) 大致上與發展項目的外觀一致。

20. ELEVATION PLAN
立面圖

Block 5
第5座

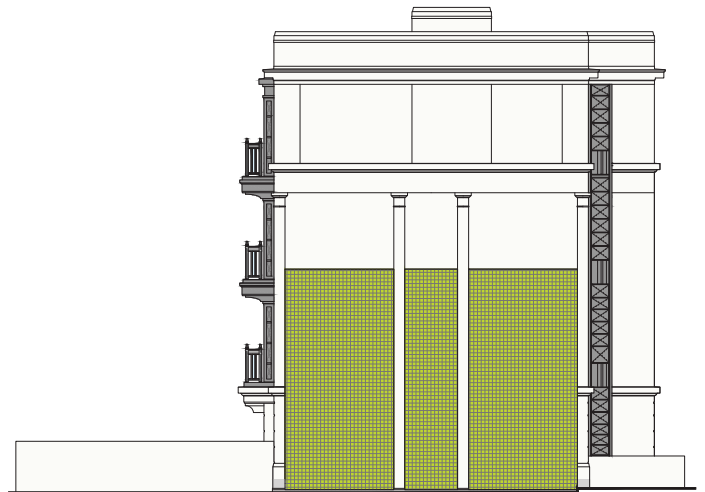


B = Block = 座 H = House = 洋房

Elevation Plan A
立面圖 A



Elevation Plan B
立面圖 B



Authorized Person for the Development has certified that the elevations shown on the plans :-

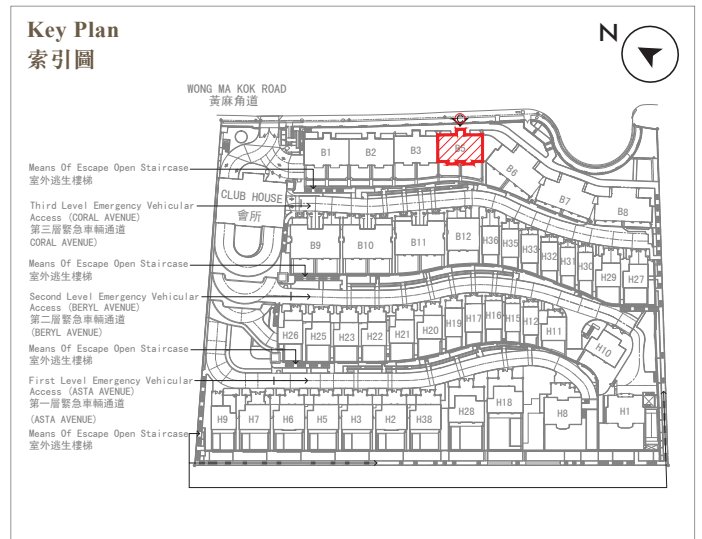
- (a) are prepared on the basis of the approved Building Plans for the Development as of 8 December 2022 and 6 June 2023; and
- (b) are in general accordance with the outward appearance of the Development.

發展項目的認可人士已證明此等圖顯示的立面 :-

- (a) 以 2022 年 12 月 8 日及 2023 年 6 月 6 日的情況為準的發展項目的經批准的建築圖則為基礎擬備；及
- (b) 大致上與發展項目的外觀一致。

20. ELEVATION PLAN
立面圖

Block 5
第5座



B = Block = 座 H = House = 洋房

Elevation Plan C
立面圖 C



Authorized Person for the Development has certified that the elevations shown on the plans :-

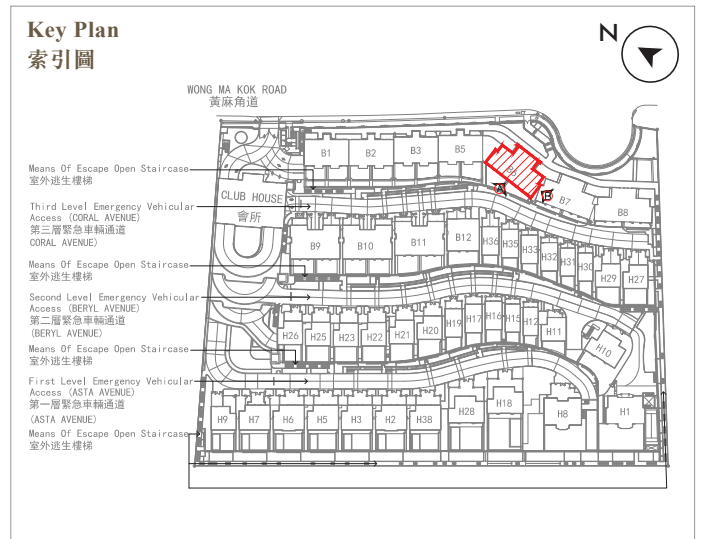
- (a) are prepared on the basis of the approved Building Plans for the Development as of 8 December 2022 and 6 June 2023; and
- (b) are in general accordance with the outward appearance of the Development.

發展項目的認可人士已證明此等圖顯示的立面 :-

- (a) 以 2022 年 12 月 8 日及 2023 年 6 月 6 日的情況為準的發展項目的經批准的建築圖則為基礎擬備；及
- (b) 大致上與發展項目的外觀一致。

20. ELEVATION PLAN
立面圖

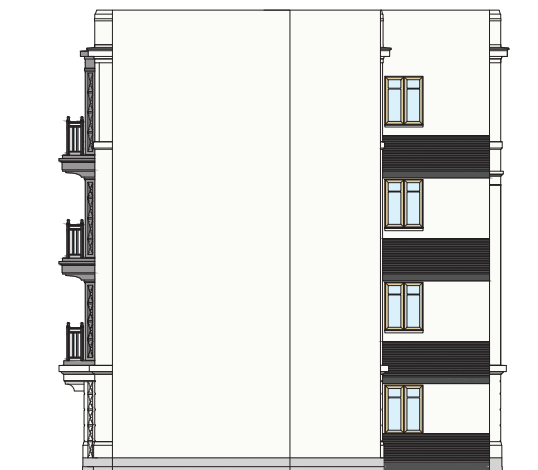
Block 6
第6座



B = Block = 座 H = House = 洋房

Elevation Plan A
立面圖 A

Elevation Plan B
立面圖 B



Authorized Person for the Development has certified that the elevations shown on the plans :-

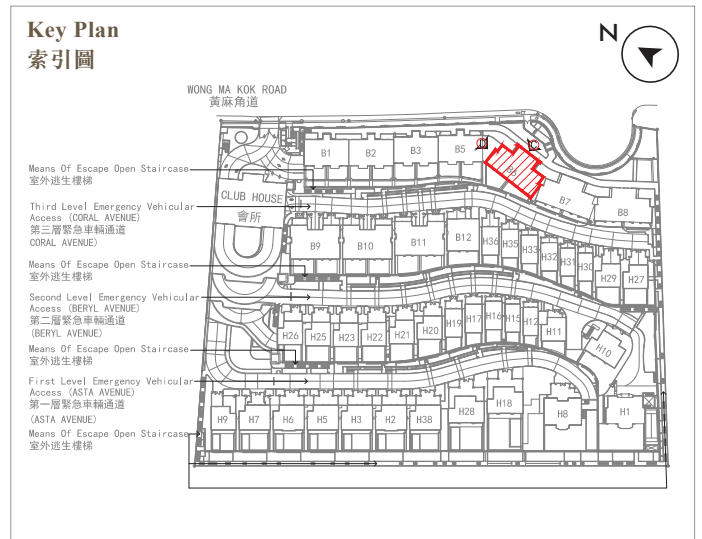
- (a) are prepared on the basis of the approved Building Plans for the Development as of 8 December 2022 and 6 June 2023; and
- (b) are in general accordance with the outward appearance of the Development.

發展項目的認可人士已證明此等圖顯示的立面 :-

- (a) 以 2022 年 12 月 8 日及 2023 年 6 月 6 日的情況為準的發展項目的經批准的建築圖則為基礎擬備；及
- (b) 大致上與發展項目的外觀一致。

20. ELEVATION PLAN
立面圖

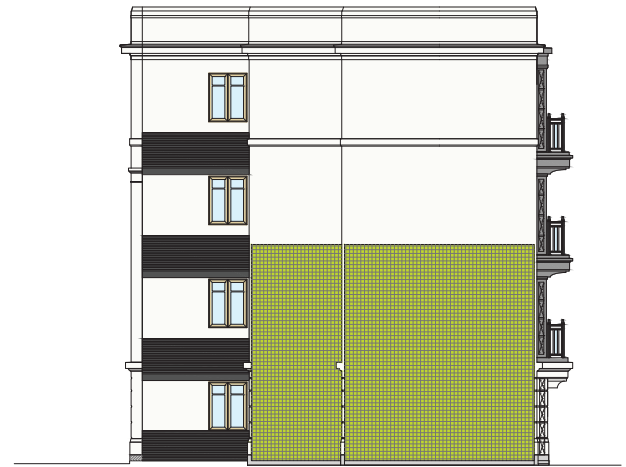
Block 6
第6座



B = Block = 座 H = House = 洋房

Elevation Plan C
立面圖 C

Elevation Plan D
立面圖 D



Authorized Person for the Development has certified that the elevations shown on the plans :-

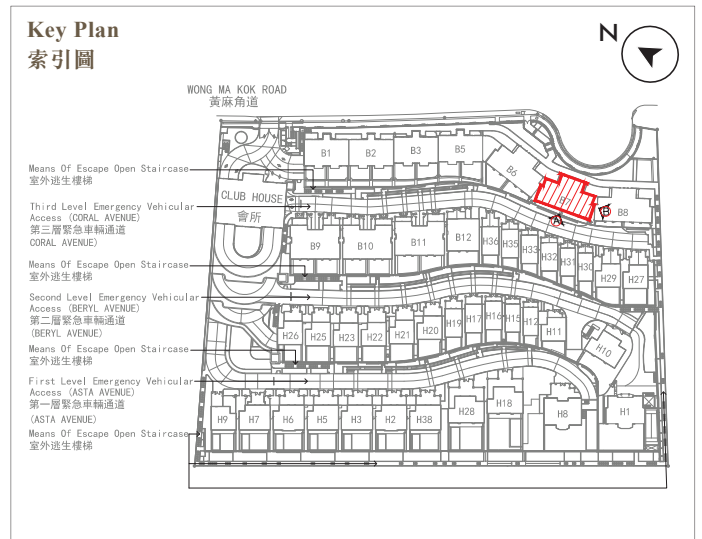
- (a) are prepared on the basis of the approved Building Plans for the Development as of 8 December 2022 and 6 June 2023; and
- (b) are in general accordance with the outward appearance of the Development.

發展項目的認可人士已證明此等圖顯示的立面 :-

- (a) 以 2022 年 12 月 8 日及 2023 年 6 月 6 日的情況為準的發展項目的經批准的建築圖則為基礎擬備；及
- (b) 大致上與發展項目的外觀一致。

20. ELEVATION PLAN
立面圖

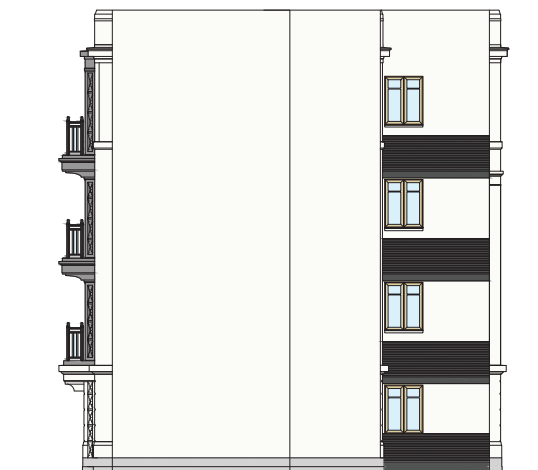
Block 7
第7座



B = Block = 座 H = House = 洋房

Elevation Plan A
立面圖 A

Elevation Plan B
立面圖 B



Authorized Person for the Development has certified that the elevations shown on the plans :-

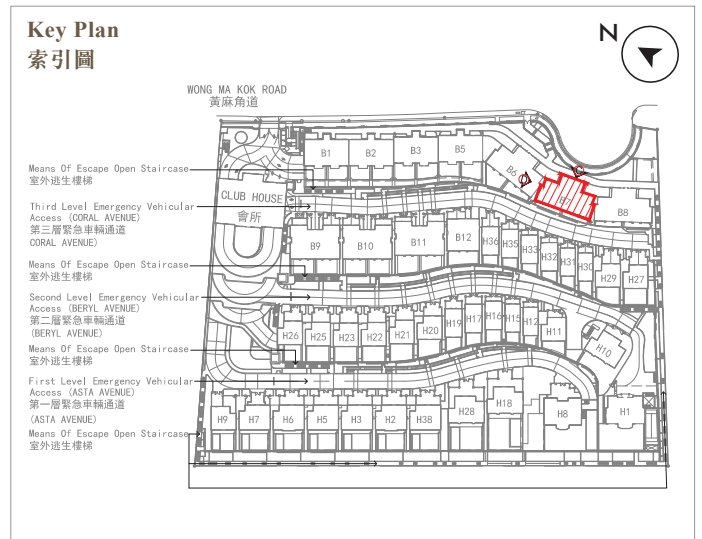
- (a) are prepared on the basis of the approved Building Plans for the Development as of 8 December 2022 and 6 June 2023; and
- (b) are in general accordance with the outward appearance of the Development.

發展項目的認可人士已證明此等圖顯示的立面 :-

- (a) 以 2022 年 12 月 8 日及 2023 年 6 月 6 日的情況為準的發展項目的經批准的建築圖則為基礎擬備；及
- (b) 大致上與發展項目的外觀一致。

20. ELEVATION PLAN
立面圖

Block 7
第7座

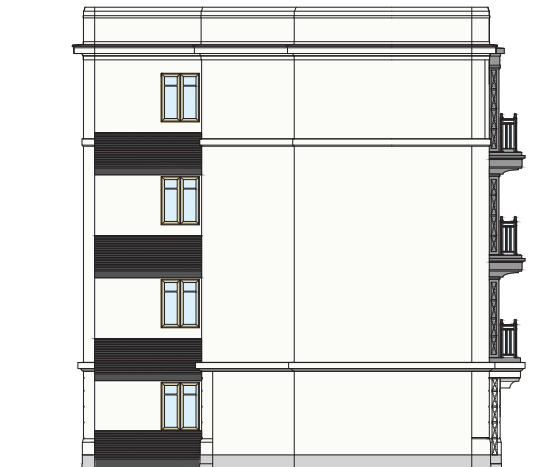


B = Block = 座 H = House = 洋房

Elevation Plan C
立面圖 C



Elevation Plan D
立面圖 D



Authorized Person for the Development has certified that the elevations shown on the plans :-

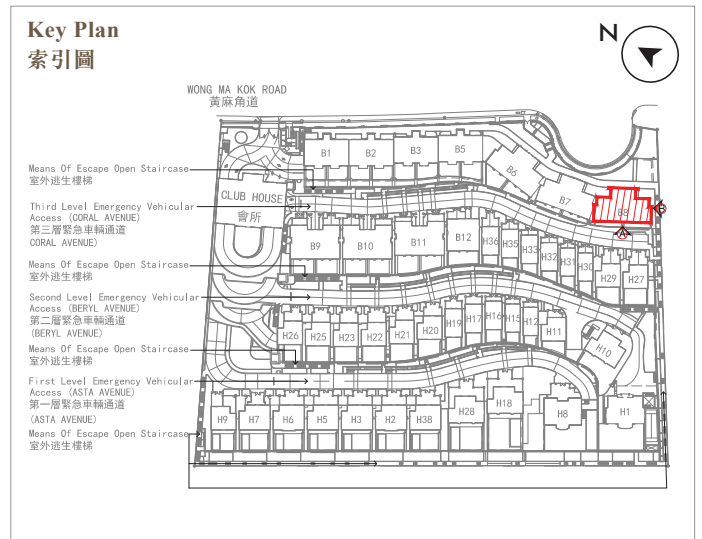
- (a) are prepared on the basis of the approved Building Plans for the Development as of 8 December 2022 and 6 June 2023; and
- (b) are in general accordance with the outward appearance of the Development.

發展項目的認可人士已證明此等圖顯示的立面 :-

- (a) 以 2022 年 12 月 8 日及 2023 年 6 月 6 日的情況為準的發展項目的經批准的建築圖則為基礎擬備；及
- (b) 大致上與發展項目的外觀一致。

20. ELEVATION PLAN
立面圖

Block 8
第8座



B = Block = 座 H = House = 洋房

Elevation Plan A
立面圖 A



Elevation Plan B
立面圖 B



Authorized Person for the Development has certified that the elevations shown on the plans :-

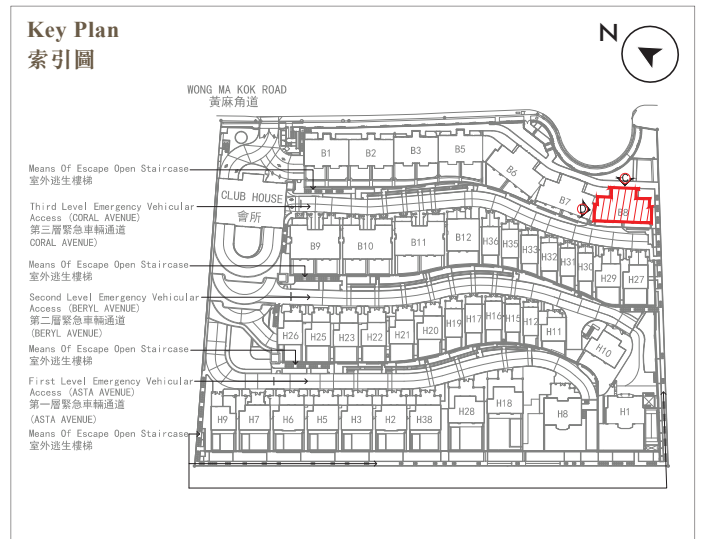
- (a) are prepared on the basis of the approved Building Plans for the Development as of 8 December 2022 and 6 June 2023; and
- (b) are in general accordance with the outward appearance of the Development.

發展項目的認可人士已證明此等圖顯示的立面 :-

- (a) 以 2022 年 12 月 8 日及 2023 年 6 月 6 日的情況為準的發展項目的經批准的建築圖則為基礎擬備；及
- (b) 大致上與發展項目的外觀一致。

20. ELEVATION PLAN
立面圖

Block 8
第8座

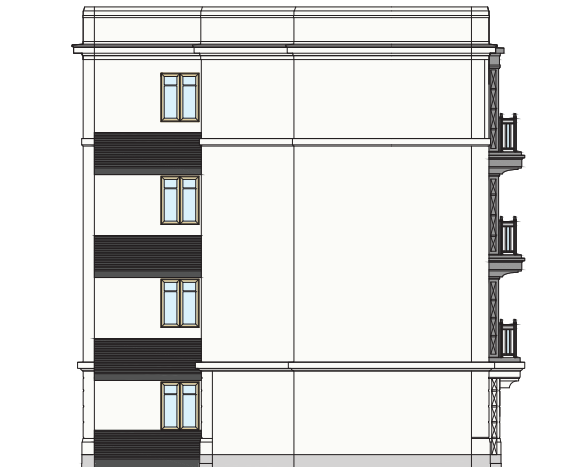


B = Block = 座 H = House = 洋房

Elevation Plan C
立面圖 C



Elevation Plan D
立面圖 D



Authorized Person for the Development has certified that the elevations shown on the plans :-

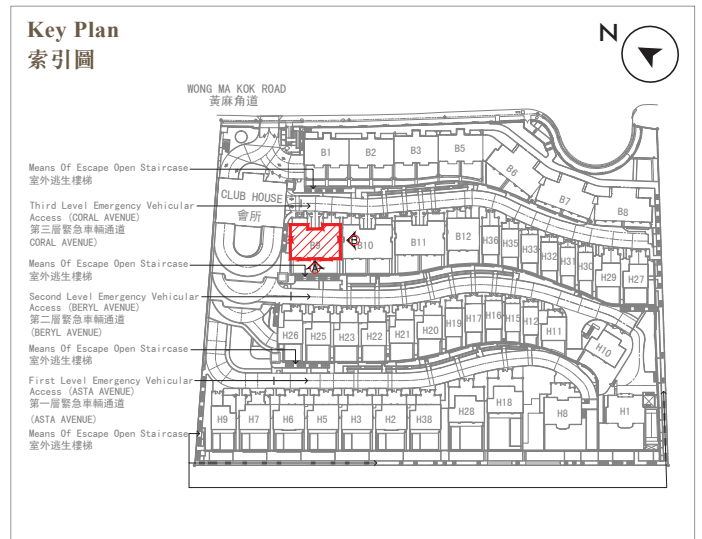
- (a) are prepared on the basis of the approved Building Plans for the Development as of 8 December 2022 and 6 June 2023; and
- (b) are in general accordance with the outward appearance of the Development.

發展項目的認可人士已證明此等圖顯示的立面 :-

- (a) 以 2022 年 12 月 8 日及 2023 年 6 月 6 日的情況為準的發展項目的經批准的建築圖則為基礎擬備；及
- (b) 大致上與發展項目的外觀一致。

20. ELEVATION PLAN
立面圖

Block 9
第9座

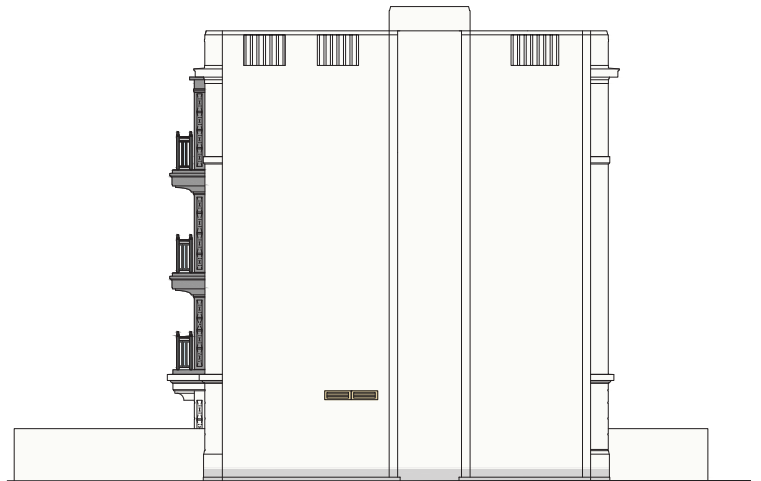


B = Block = 座 H = House = 洋房

Elevation Plan A
立面圖 A



Elevation Plan B
立面圖 B



Authorized Person for the Development has certified that the elevations shown on the plans :-

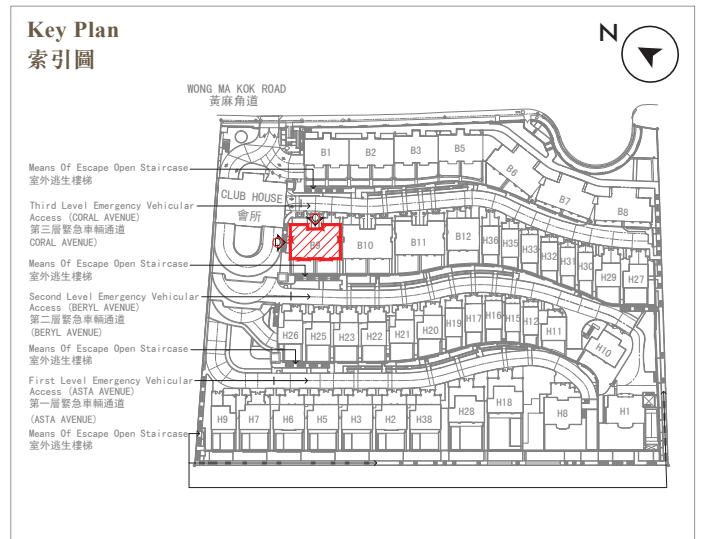
- (a) are prepared on the basis of the approved Building Plans for the Development as of 8 December 2022 and 6 June 2023; and
- (b) are in general accordance with the outward appearance of the Development.

發展項目的認可人士已證明此等圖顯示的立面 :-

- (a) 以 2022 年 12 月 8 日及 2023 年 6 月 6 日的情況為準的發展項目的經批准的建築圖則為基礎擬備；及
- (b) 大致上與發展項目的外觀一致。

20. ELEVATION PLAN
立面圖

Block 9
第9座

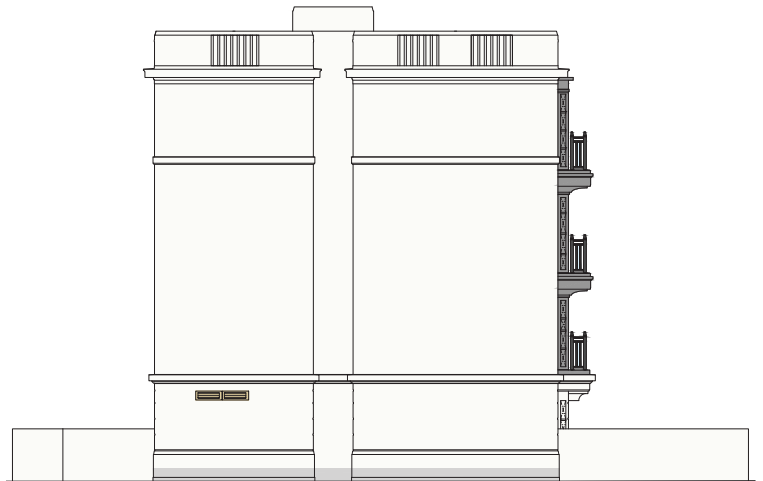


B = Block = 座 H = House = 洋房

Elevation Plan C
立面圖 C



Elevation Plan D
立面圖 D



Authorized Person for the Development has certified that the elevations shown on the plans :-

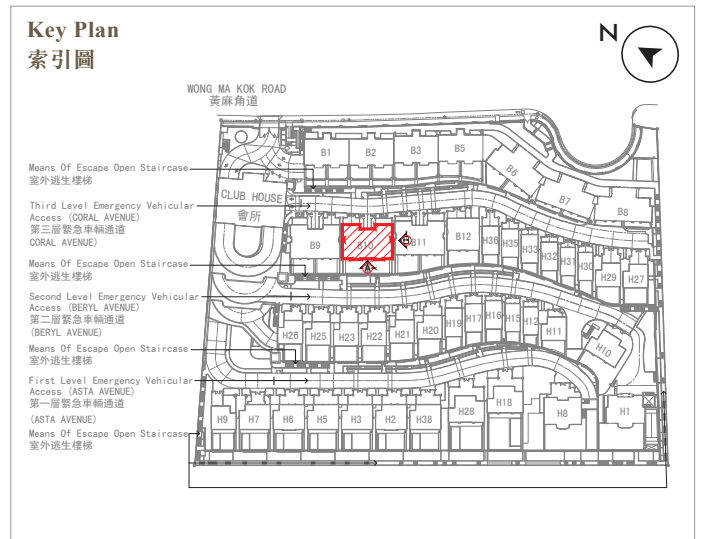
- (a) are prepared on the basis of the approved Building Plans for the Development as of 8 December 2022 and 6 June 2023; and
- (b) are in general accordance with the outward appearance of the Development.

發展項目的認可人士已證明此等圖顯示的立面 :-

- (a) 以 2022 年 12 月 8 日及 2023 年 6 月 6 日的情況為準的發展項目的經批准的建築圖則為基礎擬備；及
- (b) 大致上與發展項目的外觀一致。

20. ELEVATION PLAN
立面圖

Block 10
第10座

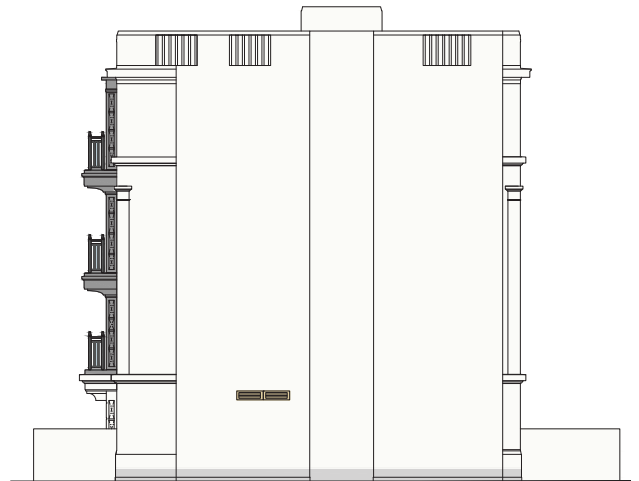


B = Block = 座 H = House = 洋房

Elevation Plan A
立面圖 A



Elevation Plan B
立面圖 B



Authorized Person for the Development has certified that the elevations shown on the plans :-

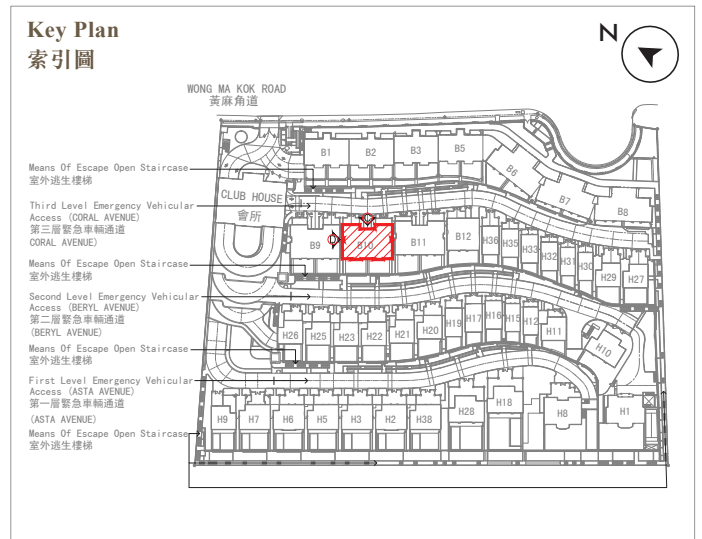
- (a) are prepared on the basis of the approved Building Plans for the Development as of 8 December 2022 and 6 June 2023; and
- (b) are in general accordance with the outward appearance of the Development.

發展項目的認可人士已證明此等圖顯示的立面 :-

- (a) 以 2022 年 12 月 8 日及 2023 年 6 月 6 日的情況為準的發展項目的經批准的建築圖則為基礎擬備；及
- (b) 大致上與發展項目的外觀一致。

20. ELEVATION PLAN
立面圖

Block 10
第10座

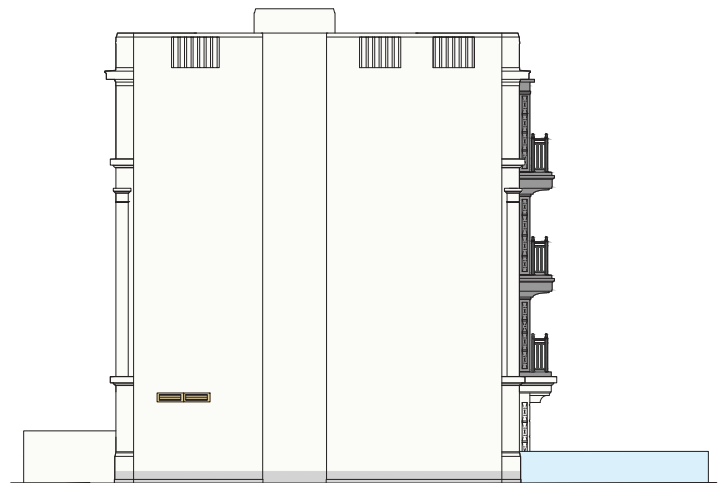


B = Block = 座 H = House = 洋房

Elevation Plan C
立面圖 C



Elevation Plan D
立面圖 D



Authorized Person for the Development has certified that the elevations shown on the plans :-

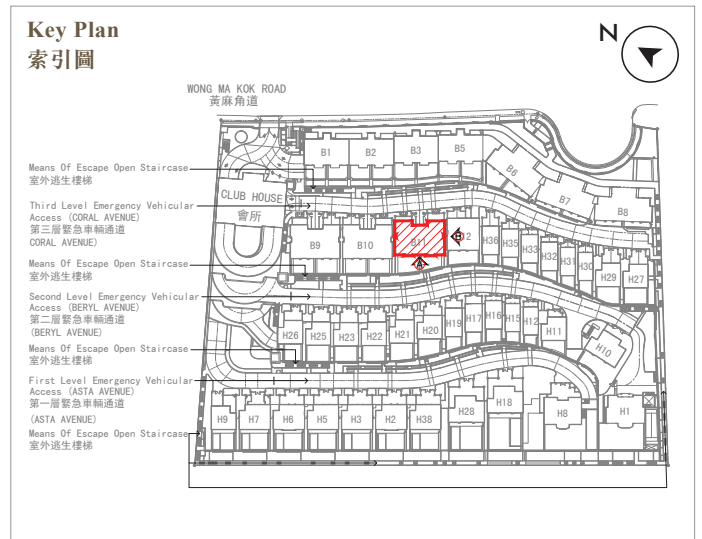
- (a) are prepared on the basis of the approved Building Plans for the Development as of 8 December 2022 and 6 June 2023; and
- (b) are in general accordance with the outward appearance of the Development.

發展項目的認可人士已證明此等圖顯示的立面 :-

- (a) 以 2022 年 12 月 8 日及 2023 年 6 月 6 日的情況為準的發展項目的經批准的建築圖則為基礎擬備；及
- (b) 大致上與發展項目的外觀一致。

20. ELEVATION PLAN
立面圖

Block 11
第11座

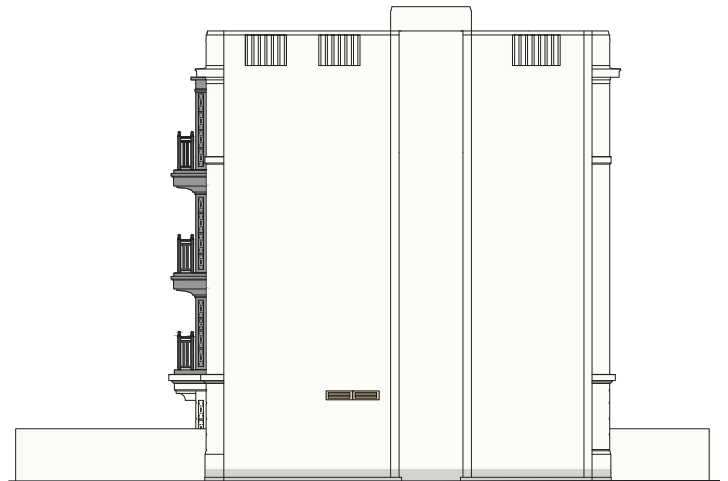


B = Block = 座 H = House = 洋房

Elevation Plan A
立面圖 A



Elevation Plan B
立面圖 B



Authorized Person for the Development has certified that the elevations shown on the plans :-

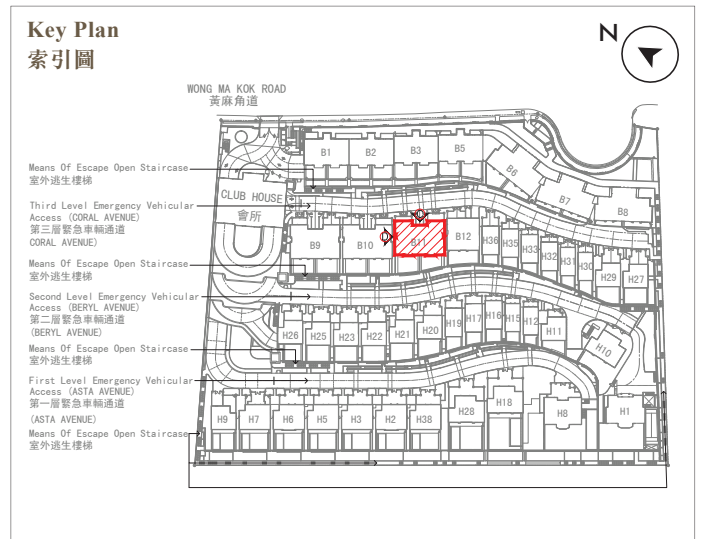
- (a) are prepared on the basis of the approved Building Plans for the Development as of 8 December 2022 and 6 June 2023; and
- (b) are in general accordance with the outward appearance of the Development.

發展項目的認可人士已證明此等圖顯示的立面 :-

- (a) 以 2022 年 12 月 8 日及 2023 年 6 月 6 日的情況為準的發展項目的經批准的建築圖則為基礎擬備；及
- (b) 大致上與發展項目的外觀一致。

20. ELEVATION PLAN
立面圖

Block 11
第11座

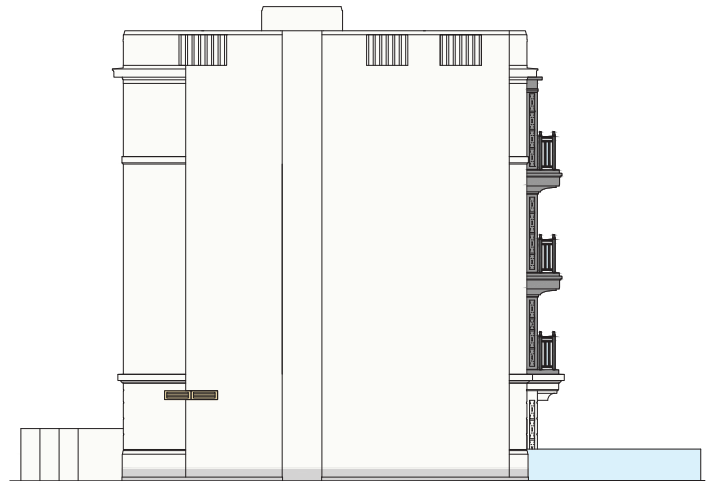


B = Block = 座 H = House = 洋房

Elevation Plan C
立面圖 C



Elevation Plan D
立面圖 D



Authorized Person for the Development has certified that the elevations shown on the plans :-

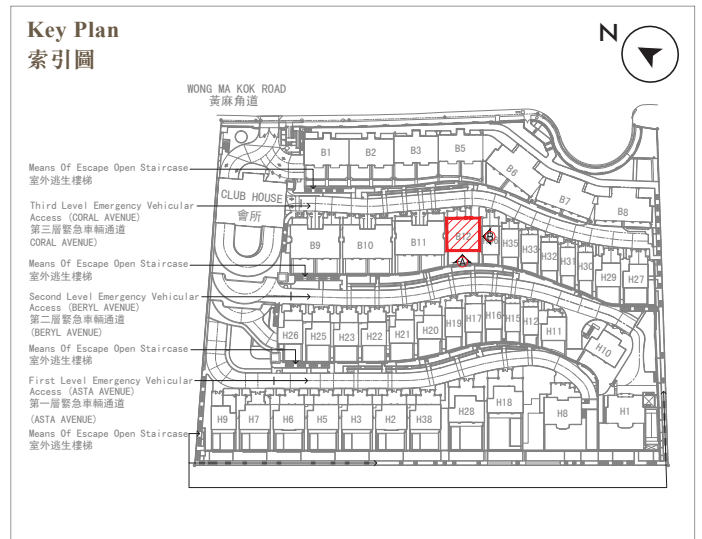
- (a) are prepared on the basis of the approved Building Plans for the Development as of 8 December 2022 and 6 June 2023; and
- (b) are in general accordance with the outward appearance of the Development.

發展項目的認可人士已證明此等圖顯示的立面 :-

- (a) 以 2022 年 12 月 8 日及 2023 年 6 月 6 日的情況為準的發展項目的經批准的建築圖則為基礎擬備；及
- (b) 大致上與發展項目的外觀一致。

20. ELEVATION PLAN
立面圖

Block 12
第12座

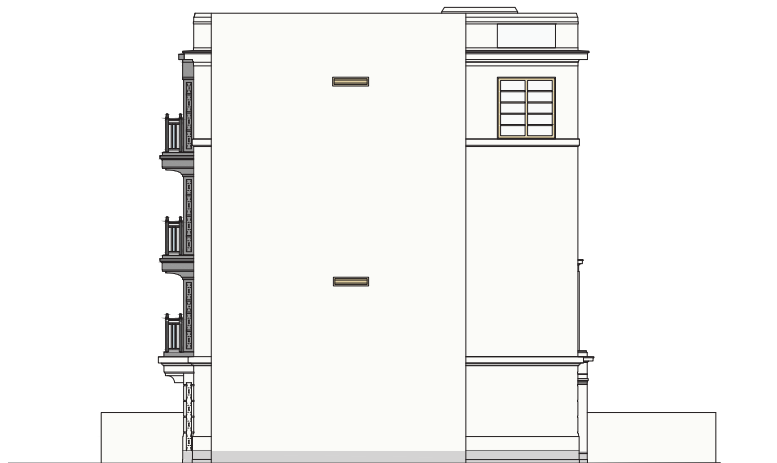


B = Block = 座 H = House = 洋房

Elevation Plan A
立面圖 A



Elevation Plan B
立面圖 B



Authorized Person for the Development has certified that the elevations shown on the plans :-

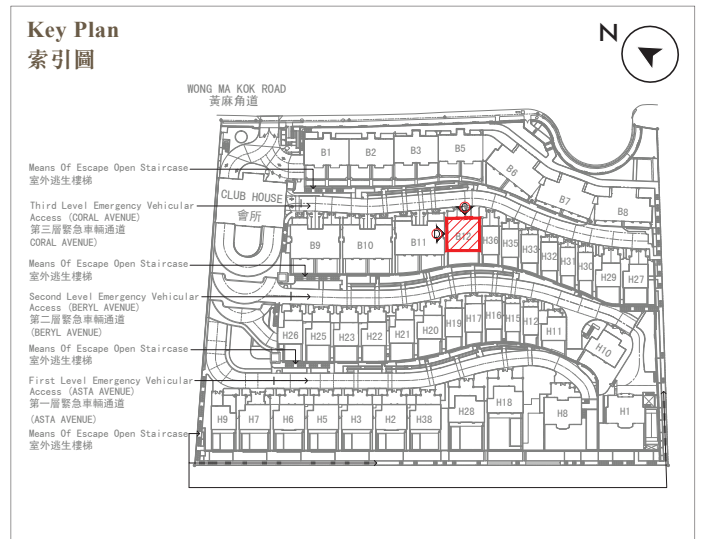
- (a) are prepared on the basis of the approved Building Plans for the Development as of 8 December 2022 and 6 June 2023; and
- (b) are in general accordance with the outward appearance of the Development.

發展項目的認可人士已證明此等圖顯示的立面 :-

- (a) 以 2022 年 12 月 8 日及 2023 年 6 月 6 日的情況為準的發展項目的經批准的建築圖則為基礎擬備；及
- (b) 大致上與發展項目的外觀一致。

20. ELEVATION PLAN
立面圖

Block 12
第12座

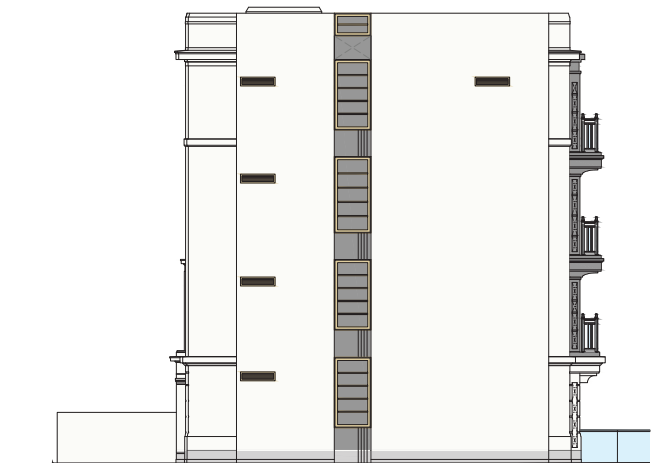


B = Block = 座 H = House = 洋房

Elevation Plan C
立面圖 C



Elevation Plan D
立面圖 D



Authorized Person for the Development has certified that the elevations shown on the plans :-

- (a) are prepared on the basis of the approved Building Plans for the Development as of 8 December 2022 and 6 June 2023; and
- (b) are in general accordance with the outward appearance of the Development.

發展項目的認可人士已證明此等圖顯示的立面 :-

- (a) 以2022年12月8日及2023年6月6日的情況為準的發展項目的經批准的建築圖則為基礎擬備；及
- (b) 大致上與發展項目的外觀一致。