

11

FLOOR PLANS OF RESIDENTIAL PROPERTIES IN THE DEVELOPMENT

發展項目的住宅物業的樓面平面圖

LEGEND OF THE TERMS AND ABBREVIATIONS USED ON FLOOR PLANS

樓面平面圖中所使用之名詞及簡稱之圖例

A/C HOOD AT H/L	= AIR-CONDITIONER HOOD AT HIGH LEVEL	設於高位的空調機窗台	LIV/DIN	= LIVING ROOM AND DINING ROOM	客廳及飯廳
A/C PLATFORM	= AIR-CONDITIONER PLATFORM	空調機平台	M.BATH	= MASTER BATHROOM	主人浴室
ACOUSTIC DOOR	= ACOUSTIC DOOR	減音門	M.B.R.	= MASTER BEDROOM	主人睡房
ACOUSTIC WINDOW	= ACOUSTIC WINDOW	減音窗	MAINTENANCE WINDOW	= MAINTENANCE WINDOW	維修窗
AD	= AIR DUCT	氣槽	O.KIT	= OPEN KITCHEN	開放式廚房
BATH	= BATHROOM	浴室	PD	= PIPE DUCT	管道槽
BATH 1	= BATHROOM 1	浴室 1	POTABLE WATER TANK & PUMP RM.	= POTABLE WATER TANK AND PUMP ROOM	食水缸及泵房
BAL.	= BALCONY	露台	POWDER	= POWDER ROOM	化妝間
BAL. ABOVE	= BALCONY ABOVE	上層露台位置	PRIVATE FLAT ROOF	= PRIVATE FLAT ROOF	私人平台
B.R.1	= BEDROOM 1	睡房 1	PRIVATE ROOF	= PRIVATE ROOF	私人天台
B.R.2	= BEDROOM 2	睡房 2	R.C. COVER (FOR AC)	= REINFORCED CONCRETE COVER (FOR AIR-CONDITIONER)	空調機窗台之 鋼筋混凝土頂蓋
B.R.3	= BEDROOM 3	睡房 3	ROOF	= ROOF	天台
BUILDING LINE ABOVE (18/F)	= BUILDING LINE ABOVE AT 18/F	建築物線置上於 18 樓	RSMRR	= REFUSE STORAGE AND MATERIAL RECOVERY ROOM	垃圾及物料回收房
D	= DOWN	下	SELF-CLOSING ACCESS DOOR (NOT FOR VENTILATION PURPOSE)	= SELF-CLOSING ACCESS DOOR (NOT FOR VENTILATION PURPOSE)	自動關閉式門 (不作通風用途)
DUCT SHAFT	= DUCT SHAFT	管道間	STORE	= STORE	儲物室
ELECT./ELEC./ELECT RM	= ELECTRICAL ROOM	電房	STORE 1	= STORE 1	儲物室 1
ELV	= EXTRA LOW VOLTAGE DUCT	特低電壓槽	TOP OF COMBINED BAL. & U.P.	= TOP OF COMBINED BALCONY AND UTILITY PLATFORM	綜合式露台及 工作平台上蓋
EMC/EL	= ELECTRIC METER CABINET	電錶櫃	TOP OF STAIRHOOD	= TOP OF STAIRHOOD	梯屋上蓋
EMR	= ELECTRIC METER ROOM	電錶房	U	= UP	上
FLUSHING WATER TANK & PUMP RM.	= FLUSHING WATER TANK AND PUMP ROOM	沖廁水缸及泵房	U.P.	= UTILITY PLATFORM	工作平台
HR	= HOSE REEL	消防喉轆	UTL	= UTILITY ROOM	工作間
INACCESSIBLE FLAT ROOF	= INACCESSIBLE FLAT ROOF	非開放平台	WMC	= WATER METER CABINET	水錶櫃
KIT	= KITCHEN	廚房	-----	= ACOUSTIC WINDOW (BAFFLE TYPE)	減音窗(擋音式)
LAV	= LAVATORY	洗手間			
LIFT	= LIFT	升降機			
LIFT OVERRUN	= LIFT OVERRUN	升降機緩衝			

11 FLOOR PLANS OF RESIDENTIAL PROPERTIES IN THE DEVELOPMENT

發展項目的住宅物業的樓面平面圖

Notes applicable to the floor plans of this section:

1. There are architectural features, metal grilles and/ or exposed pipes on the external walls of some of the floors. For details, please refer to the latest approved building plans.
2. Common pipes exposed and/ or enclosed in cladding are located at/ adjacent to the balcony, utility platform and/or roof and/or flat roof and/ or air-conditioner platform and/ or external wall of some residential units. For details, please refer to the latest approved building plans and/ or approved drainage plans.
3. There are sunken slabs (for mechanical & electrical services of units above) and/ or ceiling bulkheads for the air-conditioning fittings and/ or mechanical & electrical services at some residential units.
4. Balconies, utility platforms and air-conditioner platforms are non-enclosed areas.
5. The indications of fittings such as sinks, hobs, toilet bowls, wash basins, bathtubs etc. shown on the floor plans are indications of their approximate locations only and not indications of their actual size, designs and shapes.
6. There are exposed pipes mounted at part of flat roof and roof of each Tower in the Development. Only part of the exposed pipes are covered by aluminium cladding.
7. For some residential units, the common flat roof outside the residential unit will be placed with outdoor air-conditioner unit(s) belonging to its unit and / or other units. The placement of these air-conditioner unit(s) may have heat and/ or sounds.

適用於本章節所有平面圖的備註：

1. 部份樓層外牆設有建築裝飾、金屬格柵及/或外露喉管。詳細資料請參考最新批准的建築圖則。
2. 部份單位的露台及/或工作平台及/或天台及/或平台及/或空調機平台及/或外牆或其鄰近地方設有外露及/或內藏於飾板的公用喉管。詳細資料請參考最新批准的建築圖則及/或排水設施圖。
3. 部分住宅單位天花板有跌級樓板(用以安裝樓上單位之機電設備)及/或假天花內裝置空調裝備及/或其他機電設備。
4. 露台、工作平台及空調機平台為不可圍封的地方。
5. 樓面平面圖所示之裝置如洗滌盤、煮食爐、坐廁、面盆、浴缸等只供展示其大約位置而非展示其實際大小、設計及形狀。
6. 發展項目內的每座大樓的部份平台及天台上裝設有外露喉管，只有部份外露喉管被鋁質飾板所覆蓋。
7. 部份住宅單位外的公共平台將會放置其單位及/或其他單位的一部或多部空調機。該等空調機的位置可能發出熱力及/或聲音。

11

FLOOR PLANS OF RESIDENTIAL PROPERTIES IN THE DEVELOPMENT

發展項目的住宅物業的樓面平面圖

	Tower 座數	Floor 樓層	Units 單位								
			A	B	C	D	E	F	G	H	J
The thickness of the floor slabs (excluding plaster) of each residential property (mm) 每個住宅物業的樓板(不包括灰泥)的厚度(毫米)	Tower A1 第A1座	12/F 12樓	150, 175, 200	150, 175, 200	150, 175, 200	150, 175, 200	150, 175, 200	150, 175, 200	150, 175, 200	150, 175, 200	150, 175, 200
The floor-to-floor height (i.e. the height between the top surface of the structural slab of a floor and the top surface of the structural slab of its immediate upper floor) of each residential property (mm) 每個住宅物業的層與層之間的高度(指該樓層之石屎地台面與上一層石屎地台面之高度距離)(毫米)			2750, 3100, 3450	2750, 3100, 3450	2750, 3100, 3450	2750, 3100, 3450	2750, 3100, 3450	2750, 3100, 3450	2750, 3100, 3450	2750, 3100, 3450	2750, 3100, 3450
The thickness of the floor slabs (excluding plaster) of each residential property (mm) 每個住宅物業的樓板(不包括灰泥)的厚度(毫米)	Tower A2 第A2座		150, 175, 200	150, 175, 200	150, 175, 200	150, 175, 200	150, 175, 200	150, 175, 200	150, 175, 200	150, 175, 200	150, 175, 200
The floor-to-floor height (i.e. the height between the top surface of the structural slab of a floor and the top surface of the structural slab of its immediate upper floor) of each residential property (mm) 每個住宅物業的層與層之間的高度(指該樓層之石屎地台面與上一層石屎地台面之高度距離)(毫米)			2750, 3100, 3275, 3450	2750, 3100, 3275, 3450	2750, 3100, 3275, 3450	2750, 3100, 3275, 3450	2750, 3100, 3450	2750, 3100, 3450	2750, 3100, 3450	2750, 3100, 3450	2750, 3100, 3450

The internal areas of the residential properties on the upper floors will generally be slightly larger than those on the lower floors because of the reducing thickness of the structural walls on the upper floors.

因住宅物業的較高樓層的結構牆的厚度遞減，較高樓層的內部面積，一般比較低樓層的內部面積稍大。

Notes:

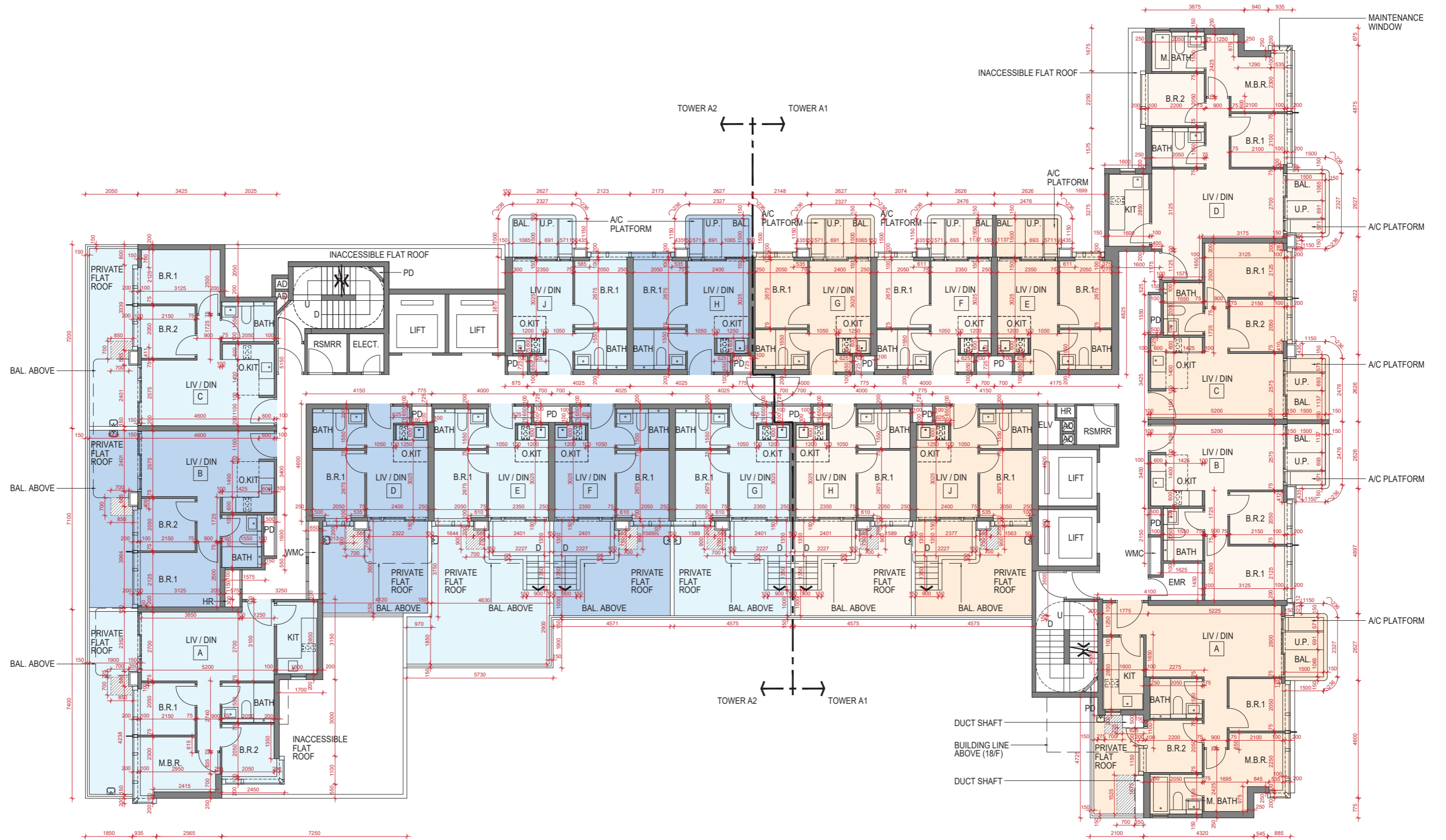
1. The dimensions in the floor plans are all structural dimensions in millimetre.
2. Please refer to Legend on page 22 for abbreviations shown in the floor plan.
3. 13/F, 14/F and 24/F are omitted.
4. Unit I is omitted.

備註：

1. 樓面平面圖所列之尺寸為以毫米標示之建築結構尺寸。
2. 有關平面圖中顯示之英文名詞之詮釋，請參閱第22頁之詞彙表。
3. 不設13樓，14樓及24樓。
4. 不設I單位。

12/F FLOOR PLAN

12樓平面圖



Legend:

圖例：

-
-
-
- TOWER A1
第A1座
- TOWER A2
第A2座
- Maintenance Space (Common Area)
維修空間(公用範圍)

Scale比例：



11

FLOOR PLANS OF RESIDENTIAL PROPERTIES IN THE DEVELOPMENT

發展項目的住宅物業的樓面平面圖

	Tower 座數	Floor 樓層	Units 單位								
			A	B	C	D	E	F	G	H	J
The thickness of the floor slabs (excluding plaster) of each residential property (mm) 每個住宅物業的樓板(不包括灰泥)的厚度(毫米)	Tower A1 第A1座	15/F - 16/F 15樓至16樓	150, 175, 200	150, 175, 200	150, 175, 200	150, 175, 200	150, 175, 200	150, 175, 200	150, 175, 200	150, 175, 200	150, 175, 200
The floor-to-floor height (i.e. the height between the top surface of the structural slab of a floor and the top surface of the structural slab of its immediate upper floor) of each residential property (mm) 每個住宅物業的層與層之間的高度(指該樓層之石屎地台面與上一層石屎地台面之高度距離)(毫米)			3100	3100	3100	3100	3100	3100	3100	3100	3100
The thickness of the floor slabs (excluding plaster) of each residential property (mm) 每個住宅物業的樓板(不包括灰泥)的厚度(毫米)	Tower A2 第A2座	15/F - 16/F 15樓至16樓	150, 175, 200	150, 175, 200	150, 175, 200	150, 175, 200	150, 175, 200	150, 175, 200	150, 175, 200	150, 175, 200	150, 175, 200
The floor-to-floor height (i.e. the height between the top surface of the structural slab of a floor and the top surface of the structural slab of its immediate upper floor) of each residential property (mm) 每個住宅物業的層與層之間的高度(指該樓層之石屎地台面與上一層石屎地台面之高度距離)(毫米)			3100	3100	3100	3100	3100	3100	3100	3100	3100
The thickness of the floor slabs (excluding plaster) of each residential property (mm) 每個住宅物業的樓板(不包括灰泥)的厚度(毫米)	Tower A1 第A1座	17/F 17樓	150, 200, 1400	150, 200, 1400	150, 200, 1400	150, 200, 1400	150, 200, 1400	150, 200, 1400	150, 200, 1400	150, 200, 1400	150, 200, 1400
The floor-to-floor height (i.e. the height between the top surface of the structural slab of a floor and the top surface of the structural slab of its immediate upper floor) of each residential property (mm) 每個住宅物業的層與層之間的高度(指該樓層之石屎地台面與上一層石屎地台面之高度距離)(毫米)			4150, 4500, 4850	4150, 4500, 4850	4500	4150, 4500, 4850	4150, 4500, 4850	4150, 4500, 4850	4150, 4500, 4850	4150, 4500, 4850	4150, 4500, 4850
The thickness of the floor slabs (excluding plaster) of each residential property (mm) 每個住宅物業的樓板(不包括灰泥)的厚度(毫米)	Tower A2 第A2座	17/F 17樓	150, 200, 1400	150, 200, 1400	150, 200, 1400	150, 200, 1400	150, 200, 1400	150, 200, 1400	150, 200, 1400	150, 200, 1400	150, 200, 1400
The floor-to-floor height (i.e. the height between the top surface of the structural slab of a floor and the top surface of the structural slab of its immediate upper floor) of each residential property (mm) 每個住宅物業的層與層之間的高度(指該樓層之石屎地台面與上一層石屎地台面之高度距離)(毫米)			4150, 4500	4500	4500	4150, 4500, 4850	4150, 4500, 4850	4150, 4500, 4850	4150, 4500, 4850	4150, 4500, 4850	4150, 4500, 4850

The internal areas of the residential properties on the upper floors will generally be slightly larger than those on the lower floors because of the reducing thickness of the structural walls on the upper floors.

因住宅物業的較高樓層的結構牆的厚度遞減，較高樓層的內部面積，一般比較低樓層的內部面積稍大。

Notes:

- The dimensions in the floor plans are all structural dimensions in millimetre.
- Please refer to Legend on page 22 for abbreviations shown in the floor plan.
- 13/F, 14/F and 24/F are omitted.
- Unit I is omitted.

備註：

- 樓面平面圖所列之尺寸為以毫米標示之建築結構尺寸。
- 有關平面圖中顯示之英文名詞之詮釋，請參閱第22頁之詞彙表。
- 不設13樓，14樓及24樓。
- 不設I單位。

15/F - 17/F FLOOR PLAN

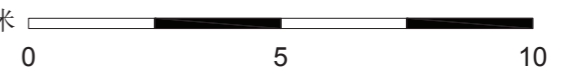
15樓至17樓平面圖



Legend:
圖例：

	TOWER A1		TOWER A2
	第A1座		第A2座

Scale比例：
Metres/米



11

FLOOR PLANS OF RESIDENTIAL PROPERTIES IN THE DEVELOPMENT

發展項目的住宅物業的樓面平面圖

	Tower 座數	Floor 樓層	Units 單位							
			A	B	C	D	E	F	G	H
The thickness of the floor slabs (excluding plaster) of each residential property (mm) 每個住宅物業的樓板(不包括灰泥)的厚度(毫米)	Tower A1 第A1座	18/F 18樓	150, 175, 200	150, 175, 200	150, 175, 200	150, 175, 200	150, 175, 200	150, 175, 200	150, 175, 200	
The floor-to-floor height (i.e. the height between the top surface of the structural slab of a floor and the top surface of the structural slab of its immediate upper floor) of each residential property (mm) 每個住宅物業的層與層之間的高度(指該樓層之石屎地台面與上一層石屎地台面之高度距離)(毫米)			2750, 3100, 3450	2750, 3100, 3450	2750, 3100, 3450	2750, 3100, 3450	2750, 3100, 3450	2750, 3100, 3450	2750, 3100, 3450	
The thickness of the floor slabs (excluding plaster) of each residential property (mm) 每個住宅物業的樓板(不包括灰泥)的厚度(毫米)	Tower A2 第A2座		150, 175, 200	150, 175, 200	150, 175, 200	150, 175, 200	150, 175, 200	150, 175, 200	150, 175, 200	150, 175, 200
The floor-to-floor height (i.e. the height between the top surface of the structural slab of a floor and the top surface of the structural slab of its immediate upper floor) of each residential property (mm) 每個住宅物業的層與層之間的高度(指該樓層之石屎地台面與上一層石屎地台面之高度距離)(毫米)			2750, 3100, 3450	2750, 3100, 3450	2750, 3100, 3450	2750, 3100, 3450	2750, 3100, 3450	2750, 3100, 3450	2750, 3100, 3450	2750, 3100, 3450
The thickness of the floor slabs (excluding plaster) of each residential property (mm) 每個住宅物業的樓板(不包括灰泥)的厚度(毫米)	Tower A1 第A1座	19/F - 23/F, 25/F - 28/F 19樓至23樓、 25樓至28樓	150, 175, 200	150, 175, 200	150, 175, 200	150, 175, 200	150, 175, 200	150, 175, 200	150, 175, 200	
The floor-to-floor height (i.e. the height between the top surface of the structural slab of a floor and the top surface of the structural slab of its immediate upper floor) of each residential property (mm) 每個住宅物業的層與層之間的高度(指該樓層之石屎地台面與上一層石屎地台面之高度距離)(毫米)			3100	3100	3100	3100	3100	3100	3100	
The thickness of the floor slabs (excluding plaster) of each residential property (mm) 每個住宅物業的樓板(不包括灰泥)的厚度(毫米)	Tower A2 第A2座		150, 175, 200	150, 175, 200	150, 175, 200	150, 175, 200	150, 175, 200	150, 175, 200	150, 175, 200	150, 175, 200
The floor-to-floor height (i.e. the height between the top surface of the structural slab of a floor and the top surface of the structural slab of its immediate upper floor) of each residential property (mm) 每個住宅物業的層與層之間的高度(指該樓層之石屎地台面與上一層石屎地台面之高度距離)(毫米)			3100	3100	3100	3100	3100	3100	3100	3100
The thickness of the floor slabs (excluding plaster) of each residential property (mm) 每個住宅物業的樓板(不包括灰泥)的厚度(毫米)	Tower A1 第A1座	29/F 29樓	150, 175, 200	150, 175, 200	150, 175, 200	150, 175, 200	150, 175, 200	150, 175, 200	150, 175, 200	
The floor-to-floor height (i.e. the height between the top surface of the structural slab of a floor and the top surface of the structural slab of its immediate upper floor) of each residential property (mm) 每個住宅物業的層與層之間的高度(指該樓層之石屎地台面與上一層石屎地台面之高度距離)(毫米)			3150, 3500, 3850	3500, 3850	3150, 3500, 3850	3150, 3500, 3850	3500	3500	3500	
The thickness of the floor slabs (excluding plaster) of each residential property (mm) 每個住宅物業的樓板(不包括灰泥)的厚度(毫米)	Tower A2 第A2座		150, 175, 200	150, 175, 200	150, 175, 200	150, 175, 200	150, 175, 200	150, 175, 200	150, 175, 200	150, 175, 200
The floor-to-floor height (i.e. the height between the top surface of the structural slab of a floor and the top surface of the structural slab of its immediate upper floor) of each residential property (mm) 每個住宅物業的層與層之間的高度(指該樓層之石屎地台面與上一層石屎地台面之高度距離)(毫米)			3150, 3500, 3850	3500, 3850	3150, 3500, 3850	3500	3500	3500	3500	3500

The internal areas of the residential properties on the upper floors will generally be slightly larger than those on the lower floors because of the reducing thickness of the structural walls on the upper floors.

因住宅物業的較高樓層的結構牆的厚度遞減，較高樓層的內部面積，一般比較低樓層的內部面積稍大。

Notes:

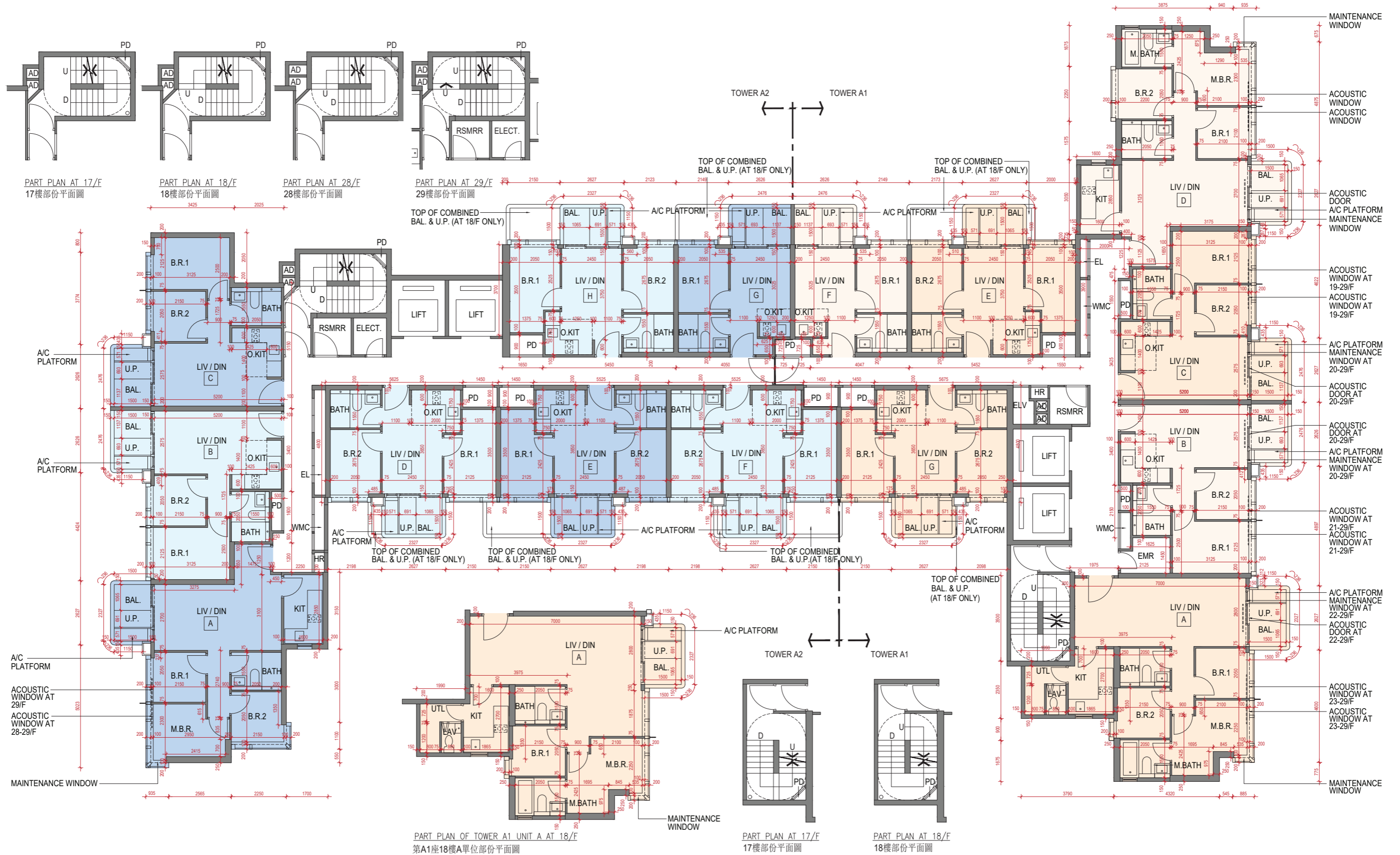
- The dimensions in the floor plans are all structural dimensions in millimetre.
- Please refer to Legend on page 22 for abbreviations shown in the floor plan.
- 13/F, 14/F and 24/F are omitted.

備註：

- 樓面平面圖所列之尺寸為以毫米標示之建築結構尺寸。
- 有關平面圖中顯示之英文名詞之詮釋，請參閱第22頁之詞彙表。
- 不設13樓，14樓及24樓。

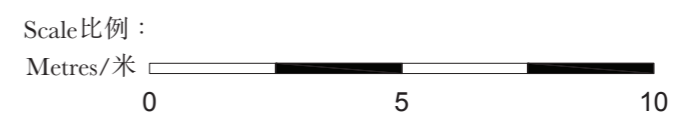
18/F - 23/F, 25/F - 29/F FLOOR PLAN

18樓至23樓、25樓至29樓平面圖



Legend:
圖例:

TOWER A1
第A1座
 TOWER A2
第A2座



11

FLOOR PLANS OF RESIDENTIAL PROPERTIES IN THE DEVELOPMENT

發展項目的住宅物業的樓面平面圖

	Tower 座數	Floor 樓層	Units 單位							
			A	B	C	D	E	F	G	H
The thickness of the floor slabs (excluding plaster) of each residential property (mm) 每個住宅物業的樓板(不包括灰泥)的厚度(毫米)	Tower A1 第A1座	30/F 30樓	150, 175, 200, 300	150, 175, 200, 300			150, 175, 200	150, 175, 200	150, 175, 200	
The floor-to-floor height (i.e. the height between the top surface of the structural slab of a floor and the top surface of the structural slab of its immediate upper floor) of each residential property (mm) 每個住宅物業的層與層之間的高度(指該樓層之石屎地台面與上一層石屎地台面之高度距離)(毫米)			3100, 3450, 3500	3075, 3125, 3150, 3425, 3500, 3850			3500	3500	3500	
The thickness of the floor slabs (excluding plaster) of each residential property (mm) 每個住宅物業的樓板(不包括灰泥)的厚度(毫米)	Tower A2 第A2座		150, 175, 200		150, 175, 200	150, 175, 200	150, 175, 200	150, 175, 200	150, 175, 200	150, 175, 200
The floor-to-floor height (i.e. the height between the top surface of the structural slab of a floor and the top surface of the structural slab of its immediate upper floor) of each residential property (mm) 每個住宅物業的層與層之間的高度(指該樓層之石屎地台面與上一層石屎地台面之高度距離)(毫米)			3000, 3050, 3150, 3350, 3400, 3500, 3850		3100, 3500, 3850	3500	3500	3500	3500	3500

The internal areas of the residential properties on the upper floors will generally be slightly larger than those on the lower floors because of the reducing thickness of the structural walls on the upper floors.

因住宅物業的較高樓層的結構牆的厚度遞減，較高樓層的內部面積，一般比較低樓層的內部面積稍大。

Notes:

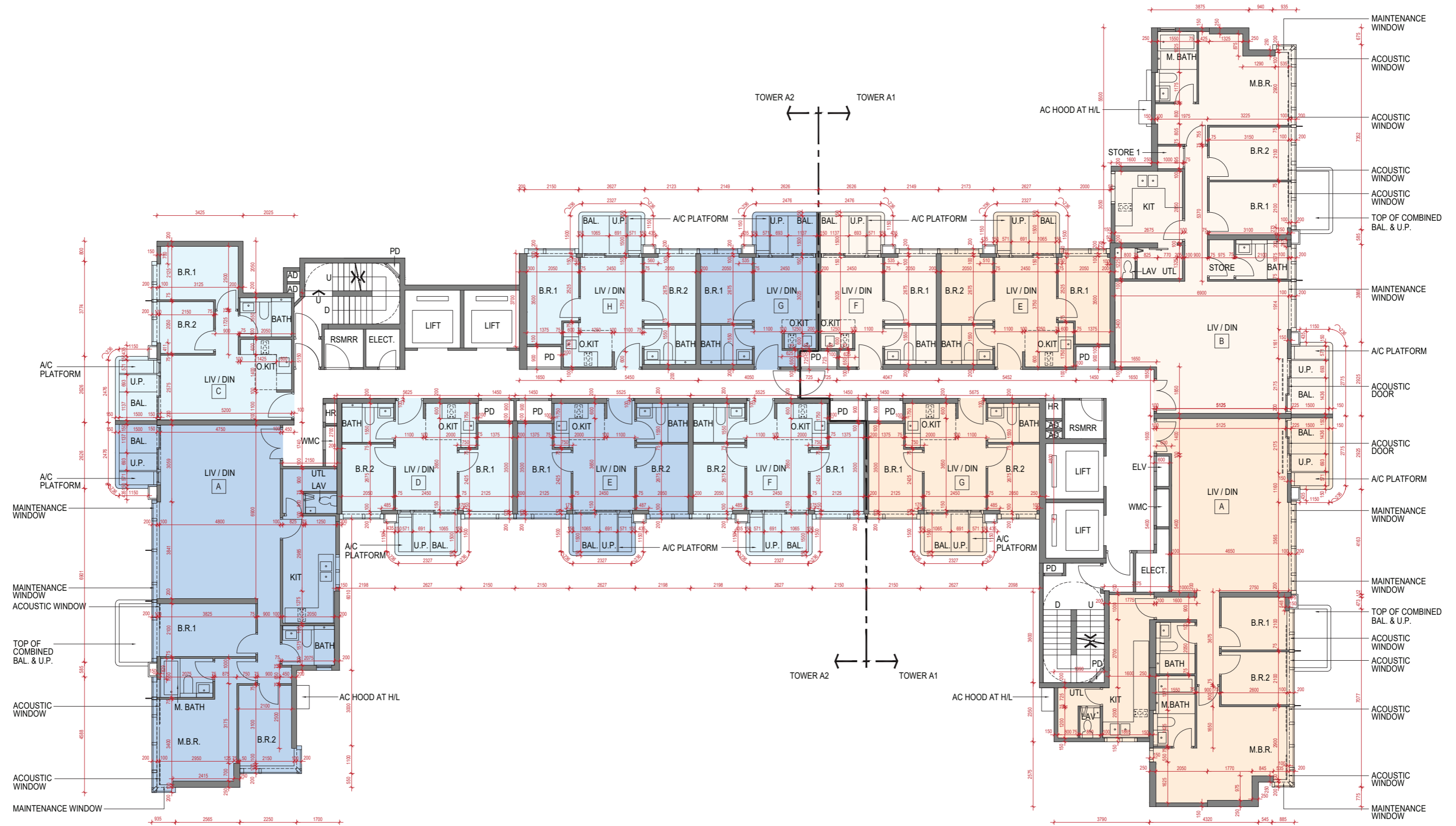
1. The dimensions in the floor plans are all structural dimensions in millimetre.
2. Please refer to Legend on page 22 for abbreviations shown in the floor plan.
3. 13/F, 14/F and 24/F are omitted.

備註：

1. 樓面平面圖所列之尺寸為以毫米標示之建築結構尺寸。
2. 有關平面圖中顯示之英文名詞之詮釋，請參閱第22頁之詞彙表。
3. 不設13樓，14樓及24樓。

30/F FLOOR PLAN

30樓平面圖



Legend:

圖例：



Scale比例：



11

FLOOR PLANS OF RESIDENTIAL PROPERTIES IN THE DEVELOPMENT

發展項目的住宅物業的樓面平面圖

	Tower 座數	Floor 樓層	Units 單位					
			A	D	E	F	G	H
The thickness of the floor slabs (excluding plaster) of each residential property (mm) 每個住宅物業的樓板(不包括灰泥)的厚度(毫米)	Tower A1 第A1座	31/F 31樓	150, 200, 400		150, 175, 200, 300	150, 200, 300	150, 175, 200	
The floor-to-floor height (i.e. the height between the top surface of the structural slab of a floor and the top surface of the structural slab of its immediate upper floor) of each residential property (mm) 每個住宅物業的層與層之間的高度(指該樓層之石屎地台面與上一層石屎地台面之高度距離)(毫米)			3750, 4100, 4125, 4175		3750, 4100	3750, 4100	3750, 4100	
The thickness of the floor slabs (excluding plaster) of each residential property (mm) 每個住宅物業的樓板(不包括灰泥)的厚度(毫米)	Tower A2 第A2座		150, 200, 250, 400	150, 175, 200	150, 175, 200	150, 175, 200	150, 200, 300	150, 200, 300
The floor-to-floor height (i.e. the height between the top surface of the structural slab of a floor and the top surface of the structural slab of its immediate upper floor) of each residential property (mm) 每個住宅物業的層與層之間的高度(指該樓層之石屎地台面與上一層石屎地台面之高度距離)(毫米)			3750, 4100, 4200, 4250	3750, 4100	3750, 4100	3750, 4100	3750, 4100	3750, 4100

The internal areas of the residential properties on the upper floors will generally be slightly larger than those on the lower floors because of the reducing thickness of the structural walls on the upper floors.

因住宅物業的較高樓層的結構牆的厚度遞減，較高樓層的內部面積，一般比較低樓層的內部面積稍大。

Notes:

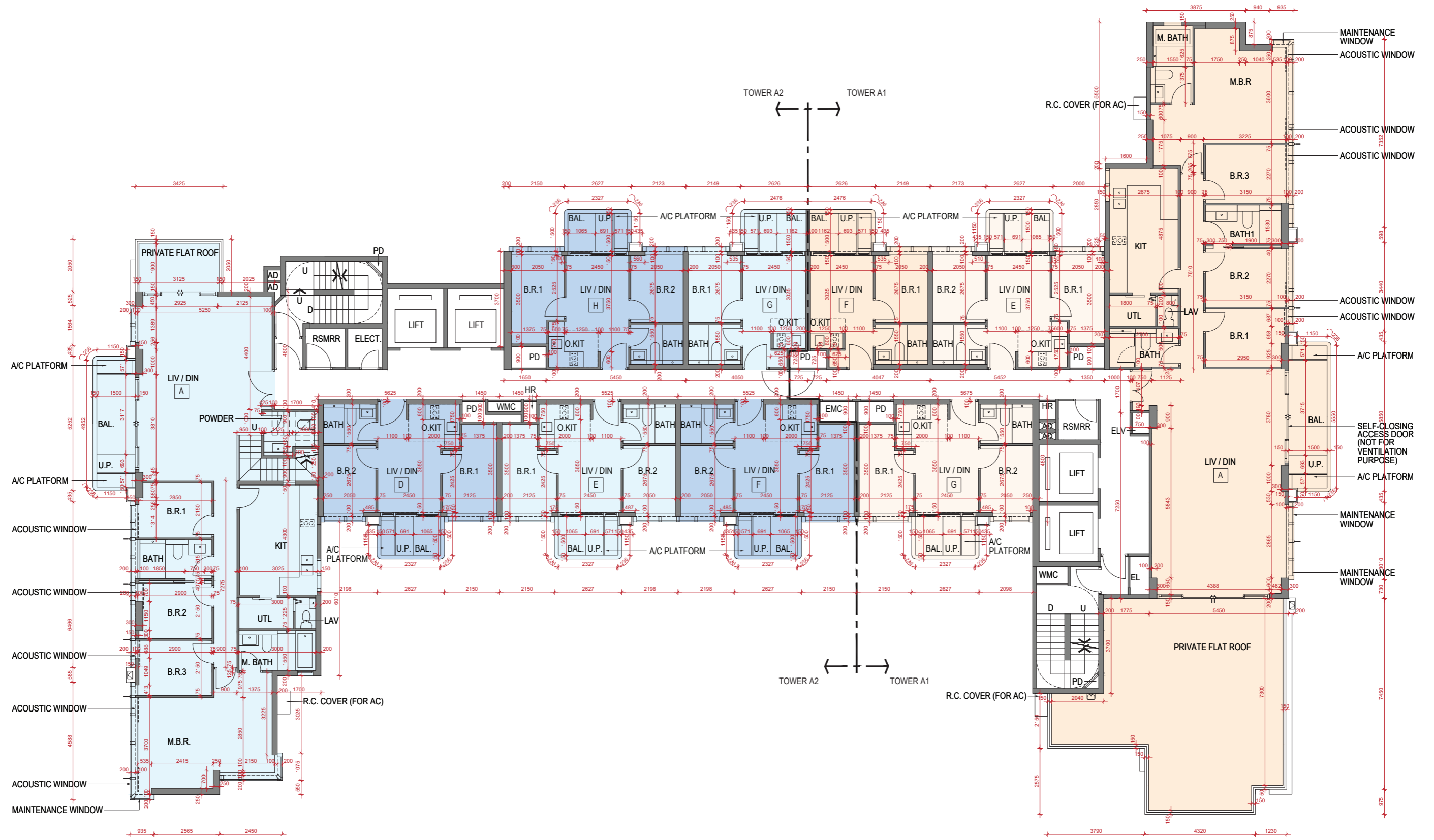
1. The dimensions in the floor plans are all structural dimensions in millimetre.
2. Please refer to Legend on page 22 for abbreviations shown in the floor plan.
3. 13/F, 14/F and 24/F are omitted.

備註：

1. 樓面平面圖所列之尺寸為以毫米標示之建築結構尺寸。
2. 有關平面圖中顯示之英文名詞之詮釋，請參閱第22頁之詞彙表。
3. 不設13樓，14樓及24樓。

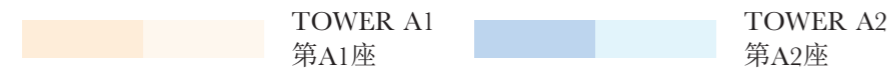
31/F FLOOR PLAN

31樓平面圖



Legend:

圖例：



Scale比例：



11

FLOOR PLANS OF RESIDENTIAL PROPERTIES IN THE DEVELOPMENT

發展項目的住宅物業的樓面平面圖

	Tower 座數	Floor 樓層	Units 單位				
			A	B	C	D	E
The thickness of the floor slabs (excluding plaster) of each residential property (mm) 每個住宅物業的樓板(不包括灰泥)的厚度(毫米)	Tower A1 第A1座	Roof Floor 天台					
The floor-to-floor height (i.e. the height between the top surface of the structural slab of a floor and the top surface of the structural slab of its immediate upper floor) of each residential property (mm) 每個住宅物業的層與層之間的高度(指該樓層之石屎地台面與上一層石屎地台面之高度距離)(毫米)							
The thickness of the floor slabs (excluding plaster) of each residential property (mm) 每個住宅物業的樓板(不包括灰泥)的厚度(毫米)	Tower A2 第A2座		N/A 不適用				
The floor-to-floor height (i.e. the height between the top surface of the structural slab of a floor and the top surface of the structural slab of its immediate upper floor) of each residential property (mm) 每個住宅物業的層與層之間的高度(指該樓層之石屎地台面與上一層石屎地台面之高度距離)(毫米)			N/A 不適用				

The internal areas of the residential properties on the upper floors will generally be slightly larger than those on the lower floors because of the reducing thickness of the structural walls on the upper floors.

因住宅物業的較高樓層的結構牆的厚度遞減，較高樓層的內部面積，一般比較低樓層的內部面積稍大。

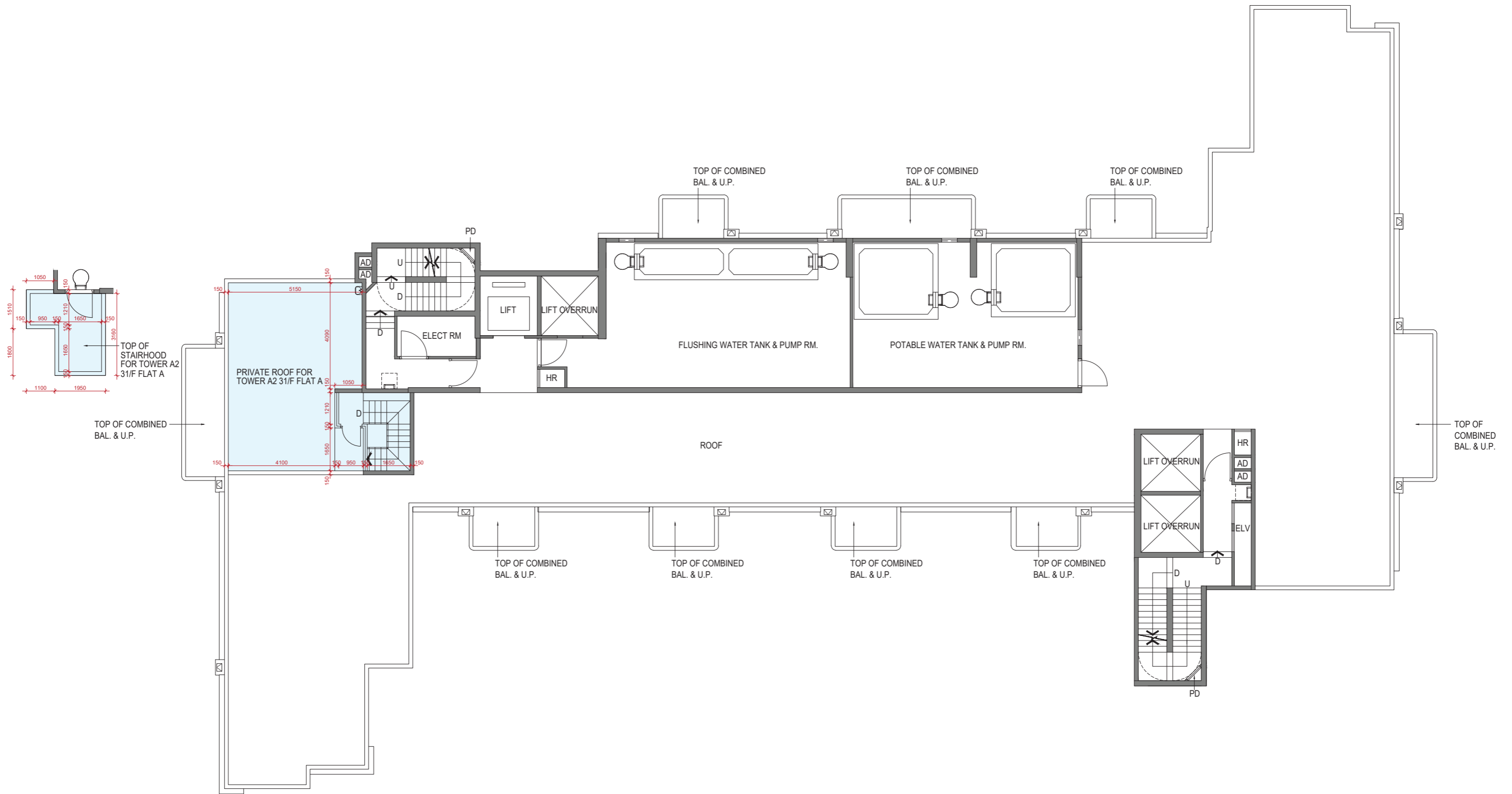
Notes:

1. The dimensions in the floor plans are all structural dimensions in millimetre.
2. Please refer to Legend on page 22 for abbreviations shown in the floor plan.
3. 13/F, 14/F and 24/F are omitted.

備註：

1. 樓面平面圖所列之尺寸為以毫米標示之建築結構尺寸。
2. 有關平面圖中顯示之英文名詞之詮釋，請參閱第22頁之詞彙表。
3. 不設13樓，14樓及24樓。

ROOF FLOOR PLAN
天台平面圖



Legend:
圖例：



Scale比例：
Metres/米

