

## Legend of terms and abbreviations used in the floor plans

### 樓面平面圖中所使用名詞及簡稱之圖例

ALU. CANOPY	= Aluminium Canopy	= 鋁質簷篷	KIT.	= Kitchen	= 廚房
ALU. CLADDING	= Aluminium Cladding	= 鋁質飾面	LAV.	= Lavatory	= 洗手間
A/C PLATFORM	= Air-Conditioning Platform	= 空調機平台	LIV./DIN.	= Living/ Dining Room	= 客廳/飯廳
A.D.	= Air Duct	= 排風管	LL	= Lift Lobby	= 升降機大堂
A.F.	= Architectural Feature	= 建築裝飾	LMR.	= Lift Machine Room	= 升降機機房
A.F. ABOVE	= Architectural Feature Above	= 上層建築裝飾	METAL A.F.	= Metal Architectural Feature	= 金屬建築裝飾
A.F. ENCLOSING PIPEWORK	= Architectural Feature Enclosing Pipework	= 建築裝飾內藏管槽	MBR	= Master Bedroom	= 主人睡房
BAL.	= Balcony	= 露台	M. BATH	= Master Bathroom	= 主人浴室
BAL. ABOVE	= Balcony Above	= 上層露台綫	O. KIT.	= Open Kitchen	= 開放式廚房
BATH	= Bathroom	= 浴室	P.	= Planter	= 花槽
BR	= Bedroom	= 睡房	P.D.	= Pipe Duct	= 管道槽
DN	= Down	= 落	P.R.	= Powder Room	= 化粧間
ELV	= Extra Low Voltage Duct	= 特低壓電線槽	RSMRR	= Refuse Storage and Material Recovery Room	= 垃圾及物料回收室
EMC	= Electrical Meter Cabinet	= 電錶箱	STO	= Store	= 儲物室
EMR	= Electric Meter Room	= 電錶房	U.P.	= Utility Platform	= 工作平台
FLA	= Flue Aperture	= 熱水爐煙道	UTR	= Utility Room	= 工作間
FLL	= Fireman Lift Lobby	= 消防升降機大堂	WMC	= Water Meter Cabinet	= 水錶櫃
H.R.	= Hose Reel	= 消防喉轆	WIC	= Walk-in Closet	= 衣帽間
H.R. AT H/L	= Hose Reel At High Level	= 消防喉轆於上方位置		= Built-in Fittings Provided in the Flats	= 隨樓附送之嵌入式裝置

### Remarks applicable to the floor plans in this section:

1. Symbols of fittings and fitments shown on the floor plans, such as bathtubs, sinks, water closets, etc, are architectural symbols for general indication only and not indications of their actual sizes, designs and shapes.
2. There may be architectural features, metal grilles and/or exposed pipes on the external walls of some residential properties. For details, please refer to the latest approved building plans and/or approved drainage plans.
3. There may be common and/or private pipes and/or other mechanical and electrical services located at/adjacent to the balcony and/or utility platform and/or flat roof and/or roof and/or garden and/or air-conditioning platform and/or external wall of some residential properties.
4. There may be ceiling bulkheads for the air-conditioning system and/or mechanical and electrical services in some of the residential properties.
5. There may be exposed pipes and/or ductings for air-conditioning system and/or mechanical and electrical services within store rooms of some of the residential properties.
6. The internal ceiling height of some of the residential properties may vary due to structural, architectural and/or decoration design variations of the properties above.
7. Balconies and utility platforms are non-enclosed areas.

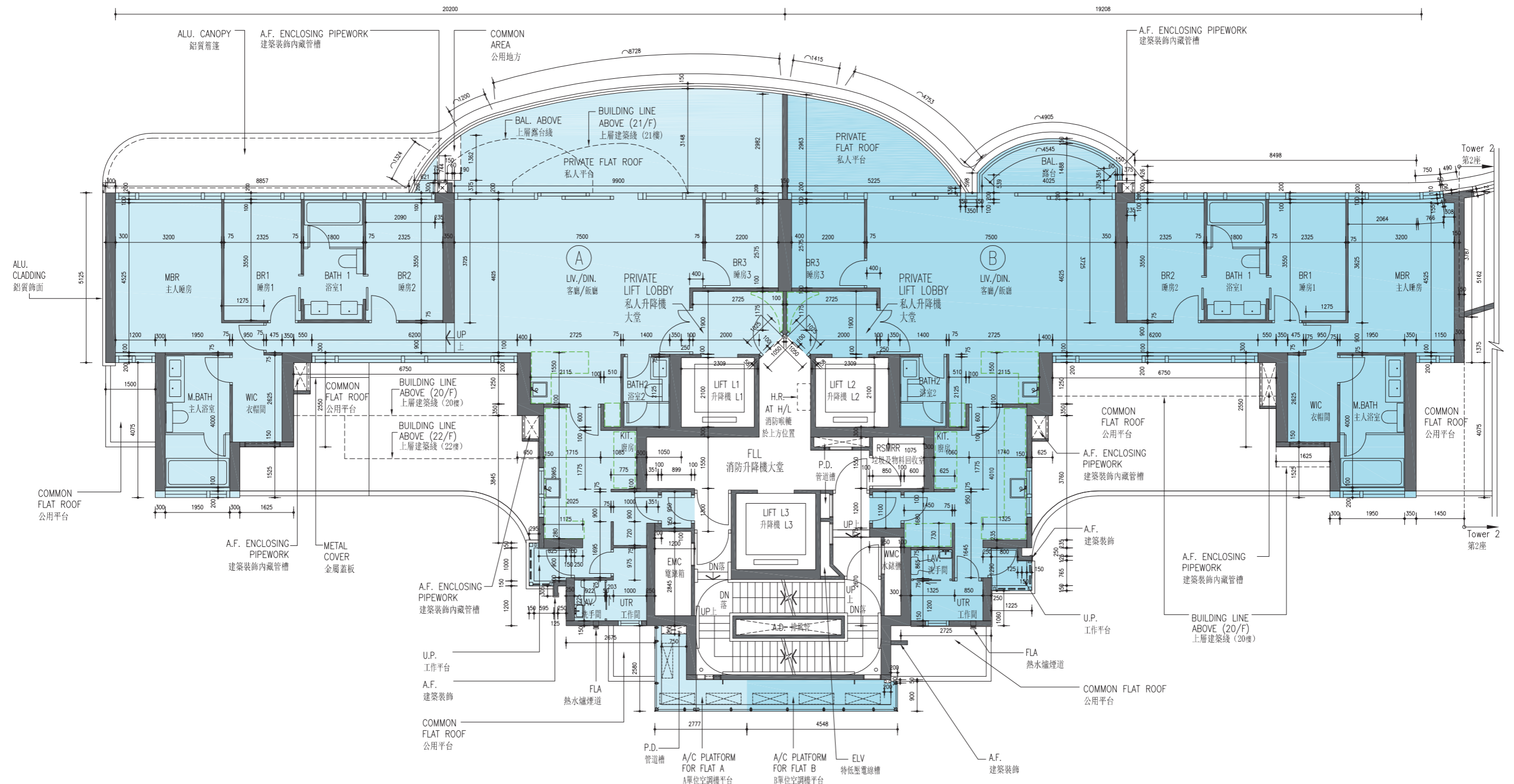
### 適用於本節之樓面平面圖之備註：

1. 樓面平面圖上所顯示的形象裝置符號，如浴缸、洗滌盆、坐廁等只供一般示意用途，而非展示其實際大小、設計及形狀。
2. 部分住宅物業的外牆範圍設有建築裝飾、金屬欄柵及/或外露喉管，詳細資料請參考最新經批准的建築圖則及/或經批准的排水設施圖則。
3. 部分住宅物業的露台及/或工作平台及/或平台及/或天台及/或花園及/或空調機平台及/或外牆上/附近或設有公用及/或私人喉管及/或其他機電設備。
4. 部分住宅物業有用以裝置空調裝備及/或機電設備的假天花。
5. 部分住宅物業的儲物室內或設有裝置空調裝備及/或機電設備之外露喉管及/或管道。
6. 部分住宅物業之室內天花高度會因應上層單位之結構、建築設計及/或裝修設計上的需要而有差異。
7. 露台及工作平台為不可封閉的地方。

# FLOOR PLANS OF RESIDENTIAL PROPERTIES IN THE DEVELOPMENT

# 發展項目的住宅物業的樓面平面圖

TOWER 1 | 1/F  
第1座 | 1樓



Scale: 0  
比例: 6M (米)

**TOWER 1 | 1/F**  
**第1座 | 1樓**

	Floor 樓層	Flat 單位	
		A	B
The thickness of the floor slabs (excluding plaster) of each residential property (mm) 每個住宅物業的樓板（不包括灰泥）的厚度（毫米）	1/F 1樓	150, 175, 200	150, 175, 200
The floor-to-floor height of each residential property (mm) 每個住宅物業的層與層之間的高度（毫米）		3050, 3100, 3200, 3250, 3300, 3500, 3800	3050, 3100, 3200, 3250, 3300, 3500, 3800

The internal areas of the residential properties on the upper floors will generally be slightly larger than those on the lower floors because of the reducing thickness of the structural walls on the upper floors. (Note: This statement required under Section 10(2)(e) in Part I of Schedule 1 to the Residential Properties (First-hand Sales) Ordinance (Cap.621) is not applicable to the Development.)

**Notes:**

1. The dimensions in floor plans are all structural dimensions in millimetre.
2. Please refer to page 23 of this sales brochure for legend of terms and abbreviations shown on the floor plans.

因住宅物業的較高樓層的結構牆的厚度遞減，較高樓層的內部面積，一般比較低樓層的內部面積稍大。（註：此根據《一手住宅物業銷售條例》（第621章）附表1第1部第10(2)(e)條所規定的陳述並不適用於發展項目。）

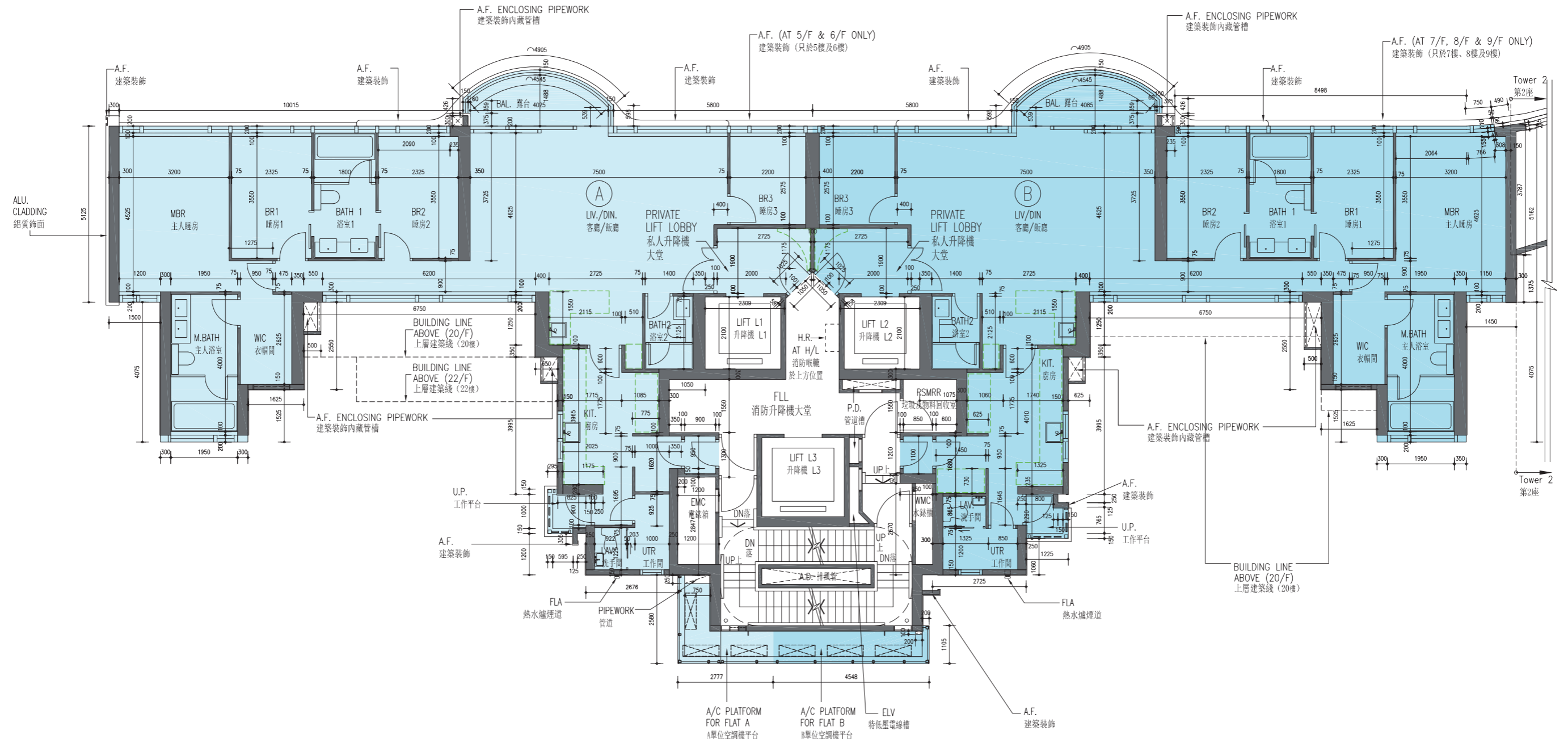
**備註：**

1. 樓面平面圖所列之所有尺寸均以毫米標示。
2. 樓面平面圖中的名稱及簡稱請參閱本售樓說明書第23頁。

# FLOOR PLANS OF RESIDENTIAL PROPERTIES IN THE DEVELOPMENT

# 發展項目的住宅物業的樓面平面圖

TOWER 1 | 2/F-3/F, 5/F-10/F  
 第1座 | 2樓至3樓、5樓至10樓



Scale: 0 6M (米)  
 比例:

**TOWER 1 | 2/F-3/F, 5/F-10/F**  
**第1座 | 2樓至3樓、5樓至10樓**

	Floor 樓層	Flat 單位	
		A	B
The thickness of the floor slabs (excluding plaster) of each residential property (mm) 每個住宅物業的樓板（不包括灰泥）的厚度（毫米）	2/F-3/F, 5/F-10/F 2樓至3樓、5樓至10樓	150, 175, 200	150, 175, 200
The floor-to-floor height of each residential property (mm) 每個住宅物業的層與層之間的高度（毫米）		3500, 3500△, 3500△△, 3500☆, 3500◎, 3500◎◎	3500, 3500△, 3500△△, 3500☆, 3500◎, 3500◎◎

△ Inclusive of the sunken depth of the sunken slab on the floor of this floor (200mm)  
 △△ Inclusive of the sunken depth of the sunken slab on the floor of this floor (250mm)  
 ☆ Inclusive of the sunken depth of the sunken slab on the floor of this floor (300mm)  
 ◎ Inclusive of the sunken depth of the sunken slab on the floor of this floor (400mm)  
 ◎◎ Inclusive of the sunken depth of the sunken slab on the floor of this floor (450mm)

△ 包括本層地台跌級樓板之跌級深度（200毫米）  
 △△ 包括本層地台跌級樓板之跌級深度（250毫米）  
 ☆ 包括本層地台跌級樓板之跌級深度（300毫米）  
 ◎ 包括本層地台跌級樓板之跌級深度（400毫米）  
 ◎◎ 包括本層地台跌級樓板之跌級深度（450毫米）

The internal areas of the residential properties on the upper floors will generally be slightly larger than those on the lower floors because of the reducing thickness of the structural walls on the upper floors. (Note: This statement required under Section 10(2)(e) in Part I of Schedule 1 to the Residential Properties (First-hand Sales) Ordinance (Cap.621) is not applicable to the Development.)

因住宅物業的較高樓層的結構牆的厚度遞減，較高樓層的內部面積，一般比較低樓層的內部面積稍大。（註：此根據《一手住宅物業銷售條例》（第621章）附表1第1部第10(2)(e)條所規定的陳述並不適用於發展項目。）

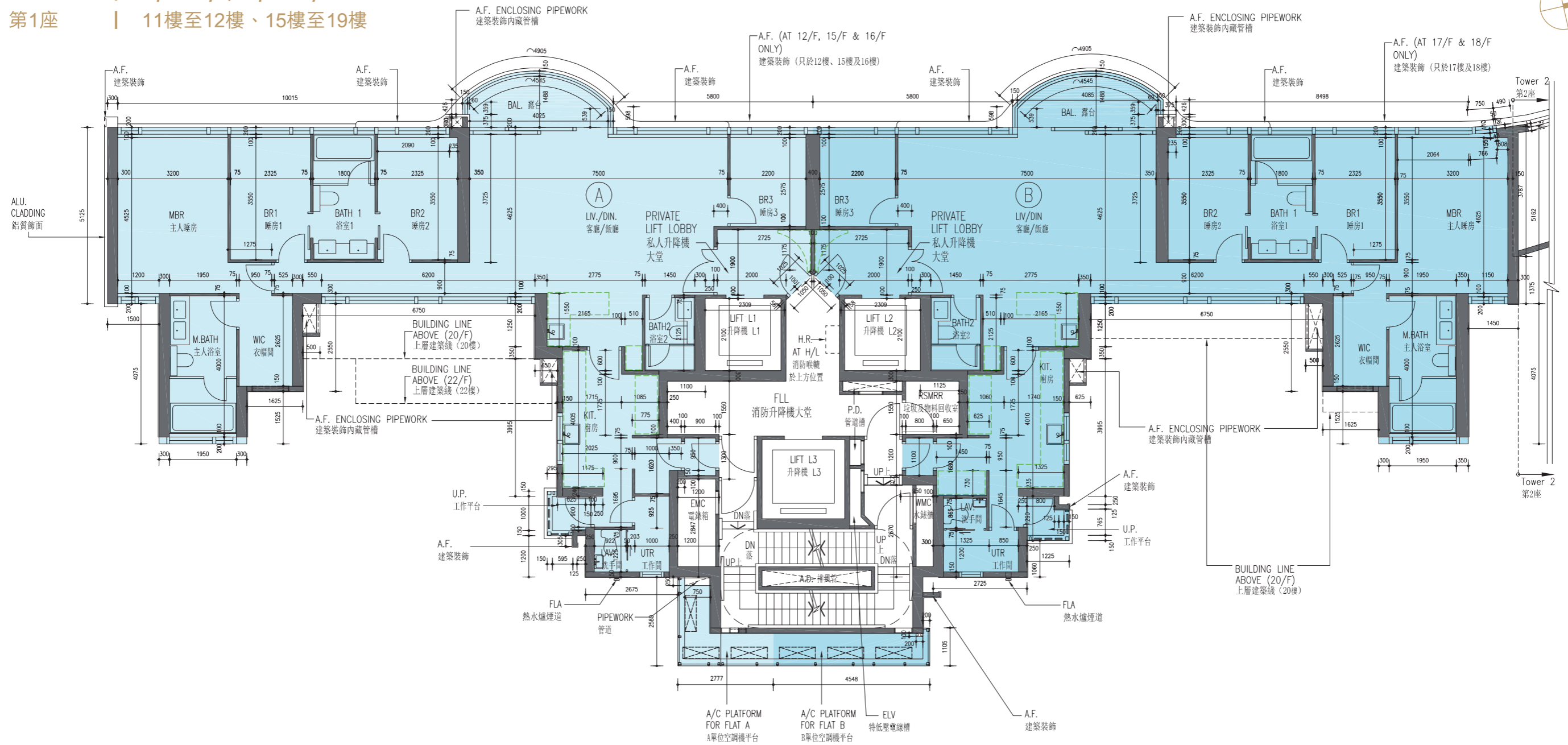
- Notes:
- The dimensions in floor plans are all structural dimensions in millimetre.
  - Please refer to page 23 of this sales brochure for legend of terms and abbreviations shown on the floor plans.

- 備註：
- 樓面平面圖所列之所有尺寸均以毫米標示。
  - 樓面平面圖中的名稱及簡稱請參閱本售樓說明書第23頁。

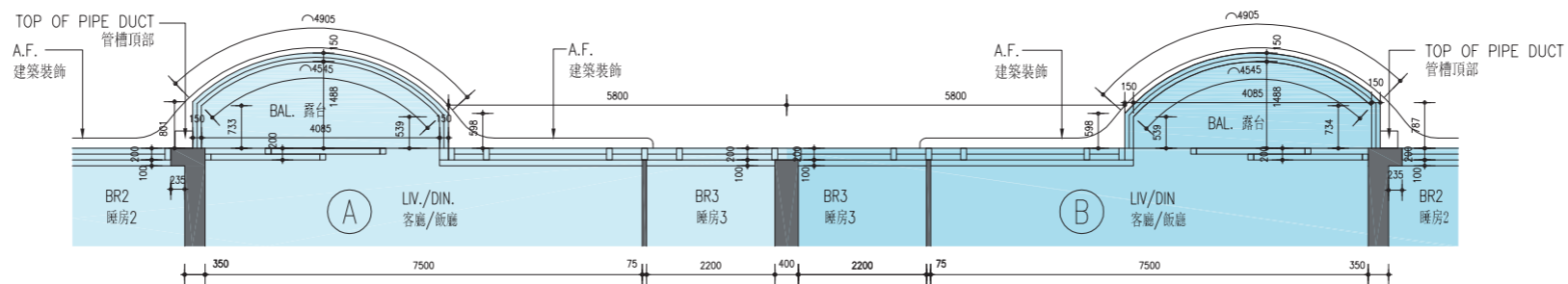
# FLOOR PLANS OF RESIDENTIAL PROPERTIES IN THE DEVELOPMENT

# 發展項目的住宅物業的樓面平面圖

TOWER 1 | 11/F-12/F, 15/F-19/F  
 第1座 | 11樓至12樓、15樓至19樓



Part Plan of 19/F  
 19樓局部平面圖



Scale: 0 6M (米)  
 比例:

TOWER 1 | 11/F-12/F, 15/F-19/F  
 第1座 | 11樓至12樓、15樓至19樓

	Floor 樓層	Flat 單位	
		A	B
The thickness of the floor slabs (excluding plaster) of each residential property (mm) 每個住宅物業的樓板（不包括灰泥）的厚度（毫米）	11/F-12/F, 15/F-18/F 11樓至12樓、15樓至18樓	150, 175, 200	150, 175, 200
	19/F 19樓	150, 200	150, 200
The floor-to-floor height of each residential property (mm) 每個住宅物業的層與層之間的高度（毫米）	11/F-12/F, 15/F-18/F 11樓至12樓、15樓至18樓	3500, 3500△, 3500△△, 3500☆, 3500◎, 3500◎◎	3500, 3500△, 3500△△, 3500☆, 3500◎, 3500◎◎
	19/F 19樓	3700, 3900△, 3950△△, 4000☆, 4100◎, 4150◎◎	3700, 3900△, 3950△△, 4000☆, 4100◎, 4150◎◎

△ Inclusive of the sunken depth of the sunken slab on the floor of this floor (200mm)  
 △△ Inclusive of the sunken depth of the sunken slab on the floor of this floor (250mm)  
 ☆ Inclusive of the sunken depth of the sunken slab on the floor of this floor (300mm)  
 ◎ Inclusive of the sunken depth of the sunken slab on the floor of this floor (400mm)  
 ◎◎ Inclusive of the sunken depth of the sunken slab on the floor of this floor (450mm)

△ 包括本層地台跌級樓板之跌級深度（200毫米）  
 △△ 包括本層地台跌級樓板之跌級深度（250毫米）  
 ☆ 包括本層地台跌級樓板之跌級深度（300毫米）  
 ◎ 包括本層地台跌級樓板之跌級深度（400毫米）  
 ◎◎ 包括本層地台跌級樓板之跌級深度（450毫米）

The internal areas of the residential properties on the upper floors will generally be slightly larger than those on the lower floors because of the reducing thickness of the structural walls on the upper floors. (Note: This statement required under Section 10(2)(e) in Part I of Schedule 1 to the Residential Properties (First-hand Sales) Ordinance (Cap.621) is not applicable to the Development.)

因住宅物業的較高樓層的結構牆的厚度遞減，較高樓層的內部面積，一般比較低樓層的內部面積稍大。（註：此根據《一手住宅物業銷售條例》（第621章）附表1第1部第10(2)(e)條所規定的陳述並不適用於發展項目。）

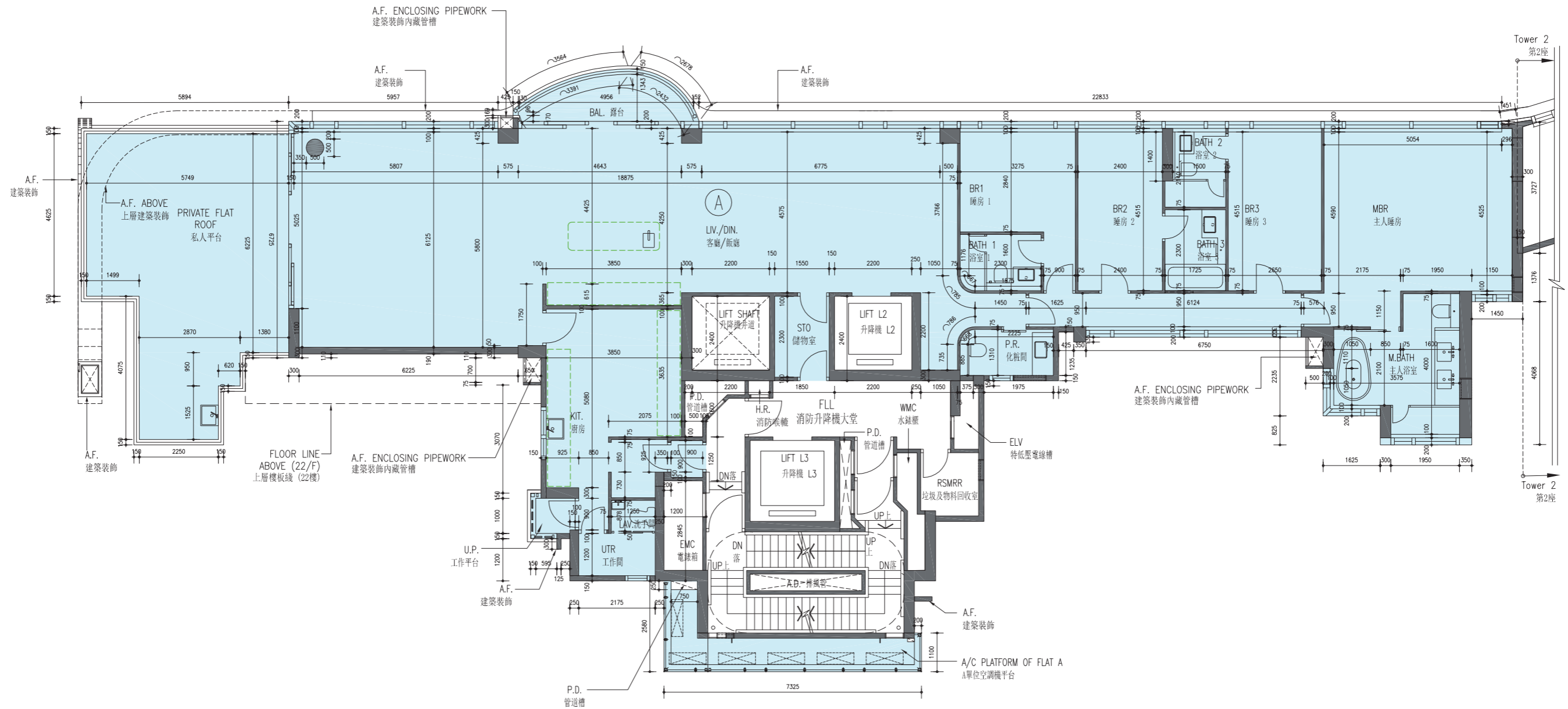
- Notes:
- The dimensions in floor plans are all structural dimensions in millimetre.
  - Please refer to page 23 of this sales brochure for legend of terms and abbreviations shown on the floor plans.

- 備註：
- 樓面平面圖所列之所有尺寸均以毫米標示。
  - 樓面平面圖中的名稱及簡稱請參閱本售樓說明書第23頁。

# FLOOR PLANS OF RESIDENTIAL PROPERTIES IN THE DEVELOPMENT

# 發展項目的住宅物業的樓面平面圖

TOWER 1 | 21/F  
第1座 | 21樓



Scale: 0 6M (米)  
比例:



TOWER 1 | 21/F

第1座 | 21樓

	Floor 樓層	Flat 單位
		A
The thickness of the floor slabs (excluding plaster) of each residential property (mm) 每個住宅物業的樓板（不包括灰泥）的厚度（毫米）	21/F 21樓	150, 175, 200
The floor-to-floor height of each residential property (mm) 每個住宅物業的層與層之間的高度（毫米）		3500, 3500#, 3500◎, 3500◎◎

# Inclusive of the sunken depth of the sunken slab on the floor of this floor (150mm)

◎ Inclusive of the sunken depth of the sunken slab on the floor of this floor (400mm)

◎◎ Inclusive of the sunken depth of the sunken slab on the floor of this floor (450mm)

# 包括本層地台跌級樓板之跌級深度（150毫米）

◎ 包括本層地台跌級樓板之跌級深度（400毫米）

◎◎ 包括本層地台跌級樓板之跌級深度（450毫米）

The internal areas of the residential properties on the upper floors will generally be slightly larger than those on the lower floors because of the reducing thickness of the structural walls on the upper floors. (Note: This statement required under Section 10(2)(e) in Part I of Schedule 1 to the Residential Properties (First-hand Sales) Ordinance (Cap.621) is not applicable to the Development.)

Notes:

1. The dimensions in floor plans are all structural dimensions in millimetre.
2. Please refer to page 23 of this sales brochure for legend of terms and abbreviations shown on the floor plans.

因住宅物業的較高樓層的結構牆的厚度遞減，較高樓層的內部面積，一般比較低樓層的內部面積稍大。（註：此根據《一手住宅物業銷售條例》（第621章）附表1第1部第10(2)(e)條所規定的陳述並不適用於發展項目。）

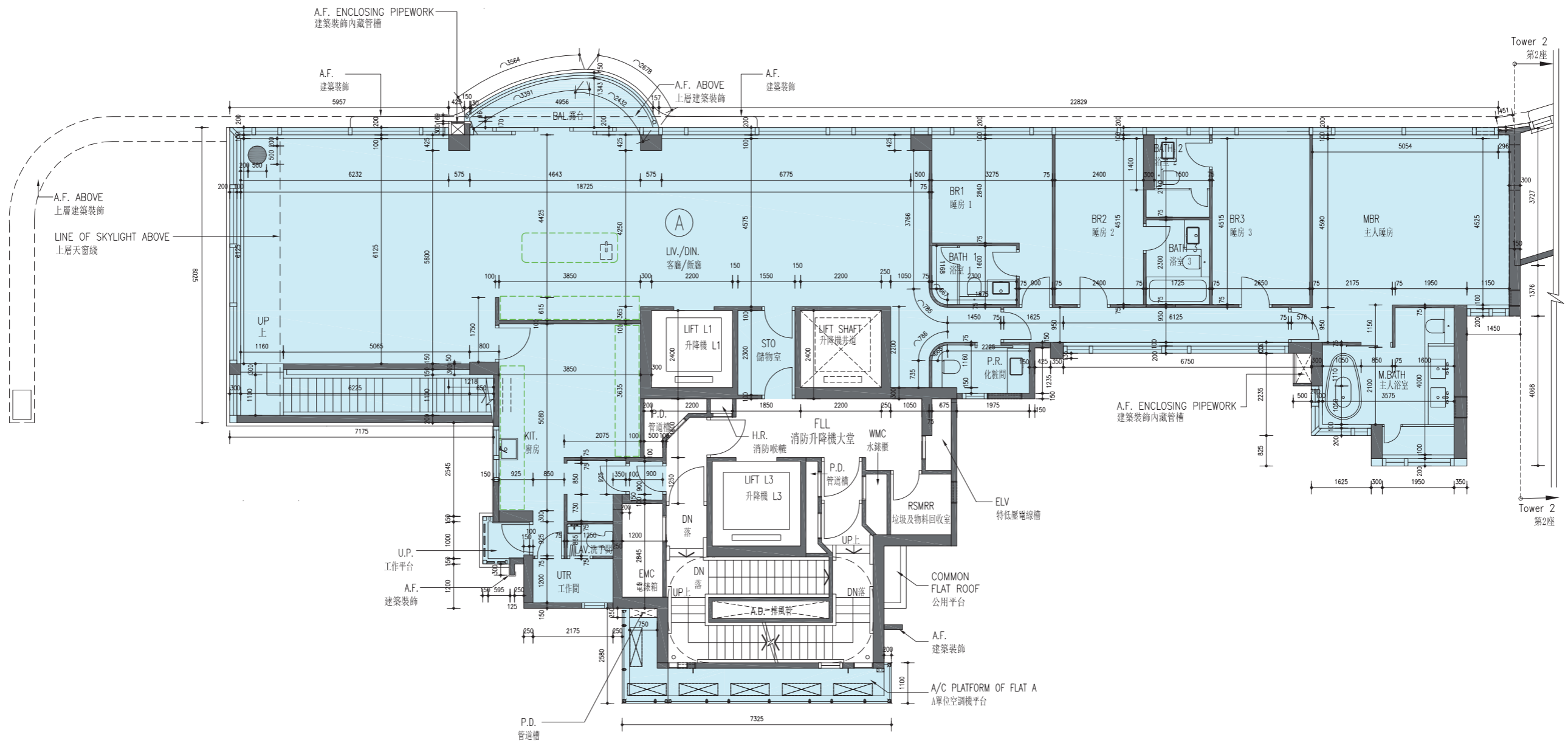
備註：

1. 樓面平面圖所列之所有尺寸均以毫米標示。
2. 樓面平面圖中的名稱及簡稱請參閱本售樓說明書第23頁。

# FLOOR PLANS OF RESIDENTIAL PROPERTIES IN THE DEVELOPMENT

# 發展項目的住宅物業的樓面平面圖

TOWER 1 | 22/F  
第1座 | 22樓



Scale: 0 6M (米)  
比例:

TOWER 1 | 22/F

第1座 | 22樓

	Floor 樓層	Flat 單位
		A
The thickness of the floor slabs (excluding plaster) of each residential property (mm) 每個住宅物業的樓板（不包括灰泥）的厚度（毫米）	22/F 22樓	150, 200, 250
The floor-to-floor height of each residential property (mm) 每個住宅物業的層與層之間的高度（毫米）		4000, 4150#, 4400◎, 4450◎◎

# Inclusive of the sunken depth of the sunken slab on the floor of this floor (150mm)

◎ Inclusive of the sunken depth of the sunken slab on the floor of this floor (400mm)

◎◎ Inclusive of the sunken depth of the sunken slab on the floor of this floor (450mm)

# 包括本層地台跌級樓板之跌級深度（150毫米）

◎ 包括本層地台跌級樓板之跌級深度（400毫米）

◎◎ 包括本層地台跌級樓板之跌級深度（450毫米）

The internal areas of the residential properties on the upper floors will generally be slightly larger than those on the lower floors because of the reducing thickness of the structural walls on the upper floors. (Note: This statement required under Section 10(2)(e) in Part I of Schedule 1 to the Residential Properties (First-hand Sales) Ordinance (Cap.621) is not applicable to the Development.)

Notes:

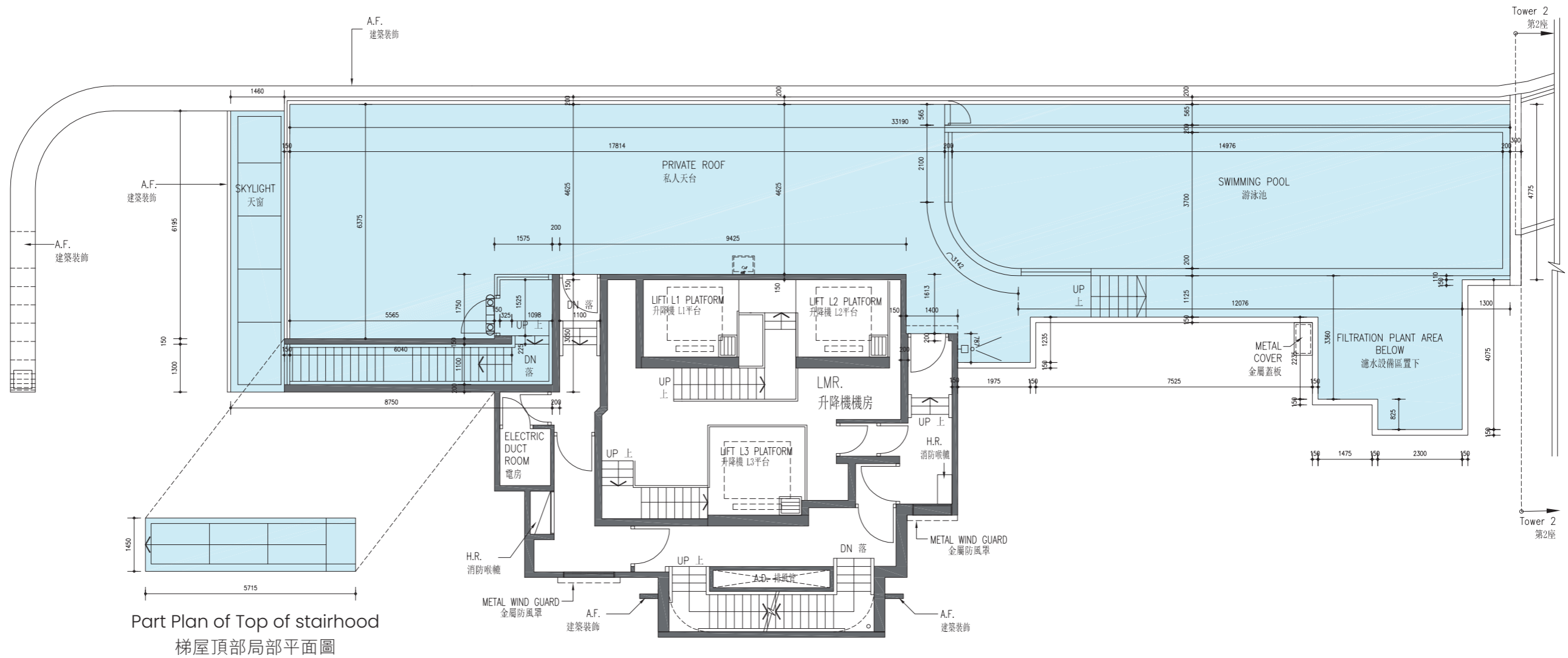
1. The dimensions in floor plans are all structural dimensions in millimetre.
2. Please refer to page 23 of this sales brochure for legend of terms and abbreviations shown on the floor plans.

因住宅物業的較高樓層的結構牆的厚度遞減，較高樓層的內部面積，一般比較低樓層的內部面積稍大。（註：此根據《一手住宅物業銷售條例》（第621章）附表1第1部第10(2)(e)條所規定的陳述並不適用於發展項目。）

備註：

1. 樓面平面圖所列之所有尺寸均以毫米標示。
2. 樓面平面圖中的名稱及簡稱請參閱本售樓說明書第23頁。

TOWER 1 | Roof  
第1座 | 天台



Part Plan of Top of stairhood  
梯屋頂部局部平面圖

Scale: 0 6M (米)  
比例:

## TOWER 1 | Roof

## 第1座 | 天台

	Floor 樓層	Flat 單位
		A
The thickness of the floor slabs (excluding plaster) of each residential property (mm) 每個住宅物業的樓板（不包括灰泥）的厚度（毫米）	Roof Floor 天台	Not applicable 不適用
The floor-to-floor height of each residential property (mm) 每個住宅物業的層與層之間的高度（毫米）		

The internal areas of the residential properties on the upper floors will generally be slightly larger than those on the lower floors because of the reducing thickness of the structural walls on the upper floors. (Note: This statement required under Section 10(2)(e) in Part I of Schedule 1 to the Residential Properties (First-hand Sales) Ordinance (Cap.621) is not applicable to the Development.)

### Notes:

1. The dimensions in floor plans are all structural dimensions in millimetre.
2. Please refer to page 23 of this sales brochure for legend of terms and abbreviations shown on the floor plans.

因住宅物業的較高樓層的結構牆的厚度遞減，較高樓層的內部面積，一般比較低樓層的內部面積稍大。（註：此根據《一手住宅物業銷售條例》（第621章）附表1第1部第10(2)(e)條所規定的陳述並不適用於發展項目。）

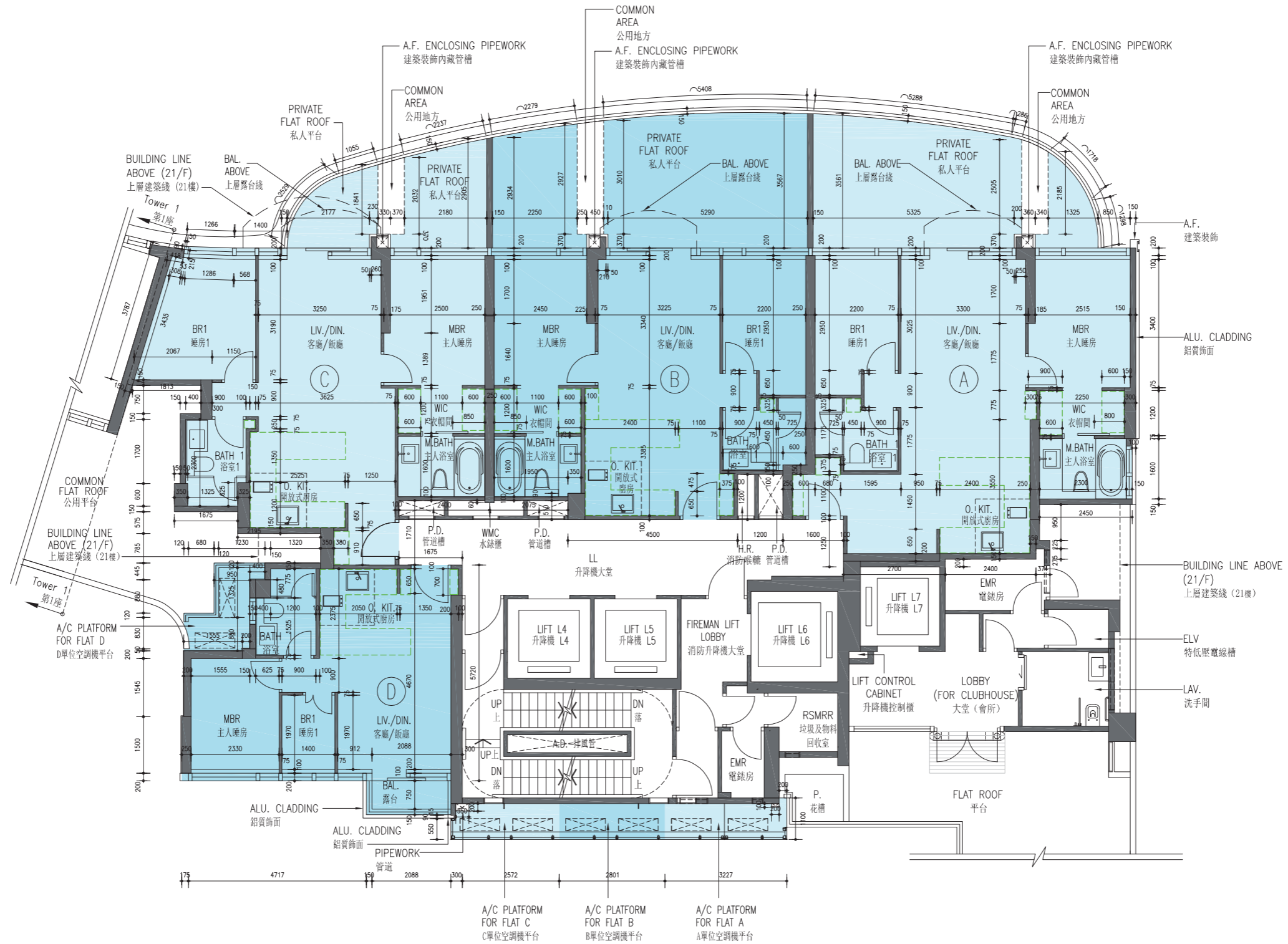
### 備註：

1. 樓面平面圖所列之所有尺寸均以毫米標示。
2. 樓面平面圖中的名稱及簡稱請參閱本售樓說明書第23頁。

# FLOOR PLANS OF RESIDENTIAL PROPERTIES IN THE DEVELOPMENT

# 發展項目的住宅物業的樓面平面圖

TOWER 2 | 1/F  
第2座 | 1樓



Scale: 0  
比例: 6M (米)

TOWER 2 | 1/F  
第2座 | 1樓

	Floor 樓層	Flat 單位			
		A	B	C	D
The thickness of the floor slabs (excluding plaster) of each residential property (mm) 每個住宅物業的樓板（不包括灰泥）的厚度（毫米）	1/F 1樓	150	150	150, 200	150, 250
The floor-to-floor height of each residential property (mm) 每個住宅物業的層與層之間的高度（毫米）		3100, 3200, 3300, 3350, 3440, 3500, 3800	3100, 3300, 3350, 3440, 3500, 3800	3100, 3300, 3440, 3500, 3800	3100, 3300, 3350, 3440, 3500, 3800

The internal areas of the residential properties on the upper floors will generally be slightly larger than those on the lower floors because of the reducing thickness of the structural walls on the upper floors. (Note: This statement required under Section 10(2)(e) in Part I of Schedule 1 to the Residential Properties (First-hand Sales) Ordinance (Cap.621) is not applicable to the Development.)

Notes:

1. The dimensions in floor plans are all structural dimensions in millimetre.
2. Please refer to page 23 of this sales brochure for legend of terms and abbreviations shown on the floor plans.

因住宅物業的較高樓層的結構牆的厚度遞減，較高樓層的內部面積，一般比較低樓層的內部面積稍大。（註：此根據《一手住宅物業銷售條例》（第621章）附表1第1部第10(2)(e)條所規定的陳述並不適用於發展項目。）

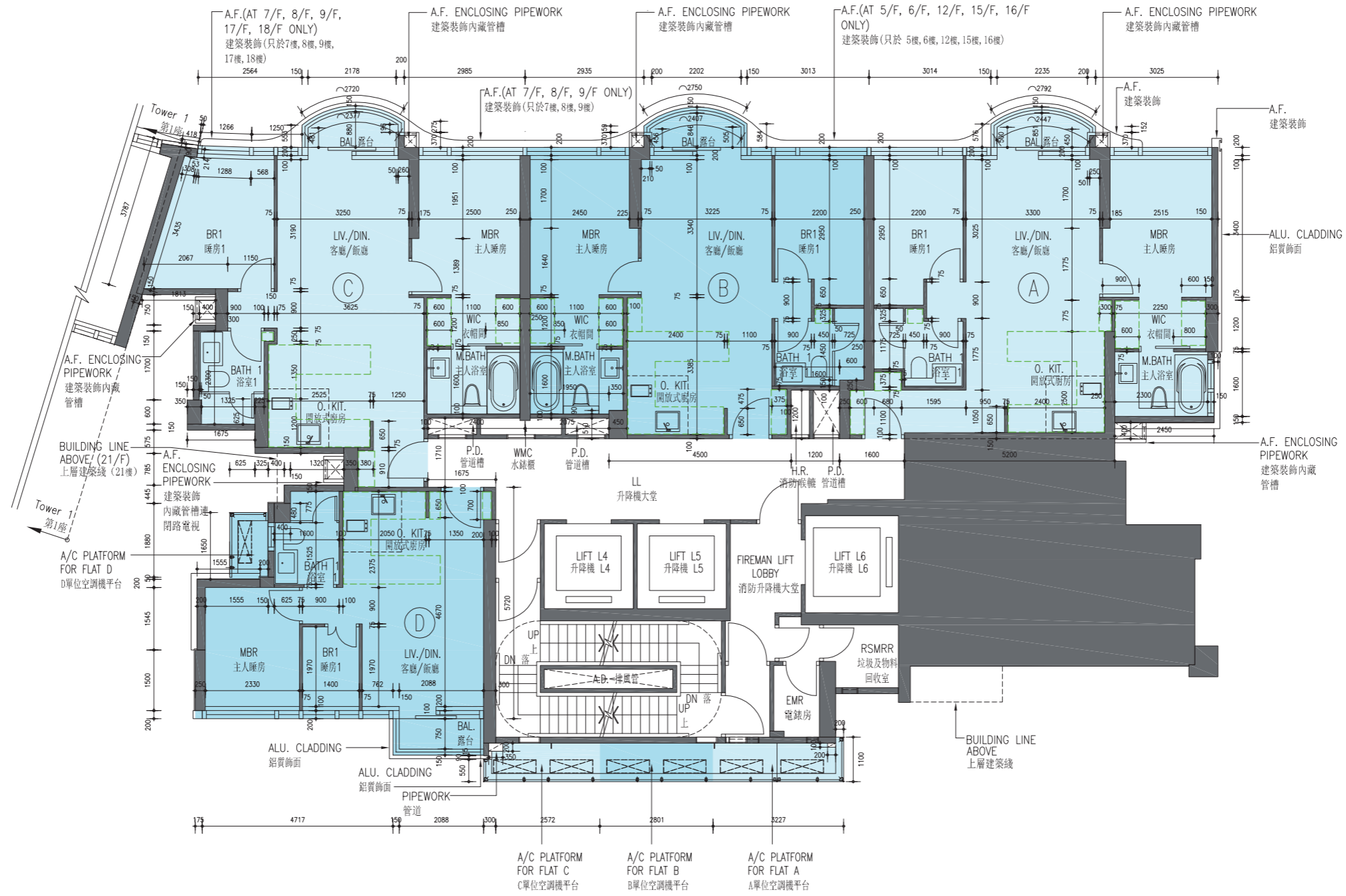
備註：

1. 樓面平面圖所列之所有尺寸均以毫米標示。
2. 樓面平面圖中的名稱及簡稱請參閱本售樓說明書第23頁。

# FLOOR PLANS OF RESIDENTIAL PROPERTIES IN THE DEVELOPMENT

# 發展項目的住宅物業的樓面平面圖

TOWER 2 | 2/F  
第2座 | 2樓



Scale: 0  
比例: 6M (米)



TOWER 2 | 2/F

第2座 | 2樓

	Floor 樓層	Flat 單位			
		A	B	C	D
The thickness of the floor slabs (excluding plaster) of each residential property (mm) 每個住宅物業的樓板（不包括灰泥）的厚度（毫米）	2/F 2樓	150	150	150, 200	150, 250
The floor-to-floor height of each residential property (mm) 每個住宅物業的層與層之間的高度（毫米）		3500, 3500◇, 3500#, 3500☆, 3500◎	3500, 3500◇, 3500#, 3500◎	3500, 3500◇, 3500◎	3500, 3500◇, 3500#, 3500◎

◇ Inclusive of the sunken depth of the sunken slab on the floor of this floor (60mm)

# Inclusive of the sunken depth of the sunken slab on the floor of this floor (150mm)

☆ Inclusive of the sunken depth of the sunken slab on the floor of this floor (300mm)

◎ Inclusive of the sunken depth of the sunken slab on the floor of this floor (400mm)

◇ 包括本層地台跌級樓板之跌級深度（60毫米）

# 包括本層地台跌級樓板之跌級深度（150毫米）

☆ 包括本層地台跌級樓板之跌級深度（300毫米）

◎ 包括本層地台跌級樓板之跌級深度（400毫米）

The internal areas of the residential properties on the upper floors will generally be slightly larger than those on the lower floors because of the reducing thickness of the structural walls on the upper floors. (Note: This statement required under Section 10(2)(e) in Part I of Schedule 1 to the Residential Properties (First-hand Sales) Ordinance (Cap.621) is not applicable to the Development.)

Notes:

- The dimensions in floor plans are all structural dimensions in millimetre.
- Please refer to page 23 of this sales brochure for legend of terms and abbreviations shown on the floor plans.

因住宅物業的較高樓層的結構牆的厚度遞減，較高樓層的內部面積，一般比較低樓層的內部面積稍大。（註：此根據《一手住宅物業銷售條例》（第621章）附表1第1部第10(2)(e)條所規定的陳述並不適用於發展項目。）

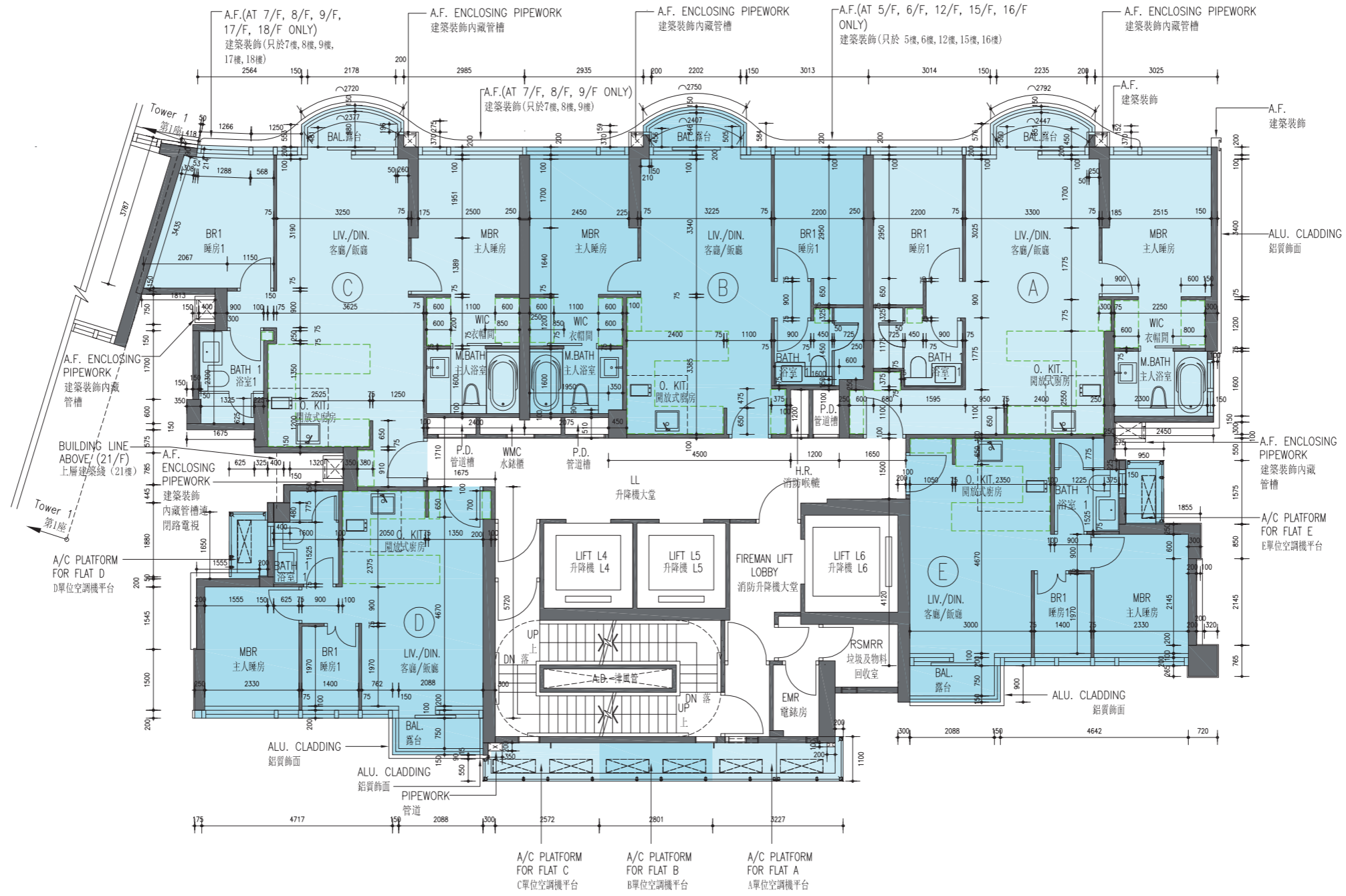
備註：

- 樓面平面圖所列之所有尺寸均以毫米標示。
- 樓面平面圖中的名稱及簡稱請參閱本售樓說明書第23頁。

# FLOOR PLANS OF RESIDENTIAL PROPERTIES IN THE DEVELOPMENT

# 發展項目的住宅物業的樓面平面圖

TOWER 2 | 3/F, 5/F-10/F  
第2座 | 3樓、5樓至10樓



Scale: 0  
比例: 6M (米)

**TOWER 2 | 3/F, 5/F-10/F**  
**第2座 | 3樓、5樓至10樓**

	Floor 樓層	Flat 單位				
		A	B	C	D	E
The thickness of the floor slabs (excluding plaster) of each residential property (mm) 每個住宅物業的樓板（不包括灰泥）的厚度（毫米）	3/F, 5/F-10/F 3樓、5樓至10樓	150	150	150, 200	150, 250	150, 175, 200
The floor-to-floor height of each residential property (mm) 每個住宅物業的層與層之間的高度（毫米）		3500, 3500◇, 3500#, 3500☆, 3500◎	3500, 3500◇, 3500#, 3500◎	3500, 3500◇, 3500◎	3500, 3500◇, 3500#, 3500◎	3500, 3500#, 3500◎

- ◇ Inclusive of the sunken depth of the sunken slab on the floor of this floor (60mm)
- # Inclusive of the sunken depth of the sunken slab on the floor of this floor (150mm)
- ☆ Inclusive of the sunken depth of the sunken slab on the floor of this floor (300mm)
- ◎ Inclusive of the sunken depth of the sunken slab on the floor of this floor (400mm)

- ◇ 包括本層地台跌級樓板之跌級深度（60毫米）
- # 包括本層地台跌級樓板之跌級深度（150毫米）
- ☆ 包括本層地台跌級樓板之跌級深度（300毫米）
- ◎ 包括本層地台跌級樓板之跌級深度（400毫米）

The internal areas of the residential properties on the upper floors will generally be slightly larger than those on the lower floors because of the reducing thickness of the structural walls on the upper floors. (Note: This statement required under Section 10(2)(e) in Part I of Schedule 1 to the Residential Properties (First-hand Sales) Ordinance (Cap.621) is not applicable to the Development.)

因住宅物業的較高樓層的結構牆的厚度遞減，較高樓層的內部面積，一般比較低樓層的內部面積稍大。（註：此根據《一手住宅物業銷售條例》（第621章）附表1第1部第10(2)(e)條所規定的陳述並不適用於發展項目。）

**Notes:**

1. The dimensions in floor plans are all structural dimensions in millimetre.
2. Please refer to page 23 of this sales brochure for legend of terms and abbreviations shown on the floor plans.

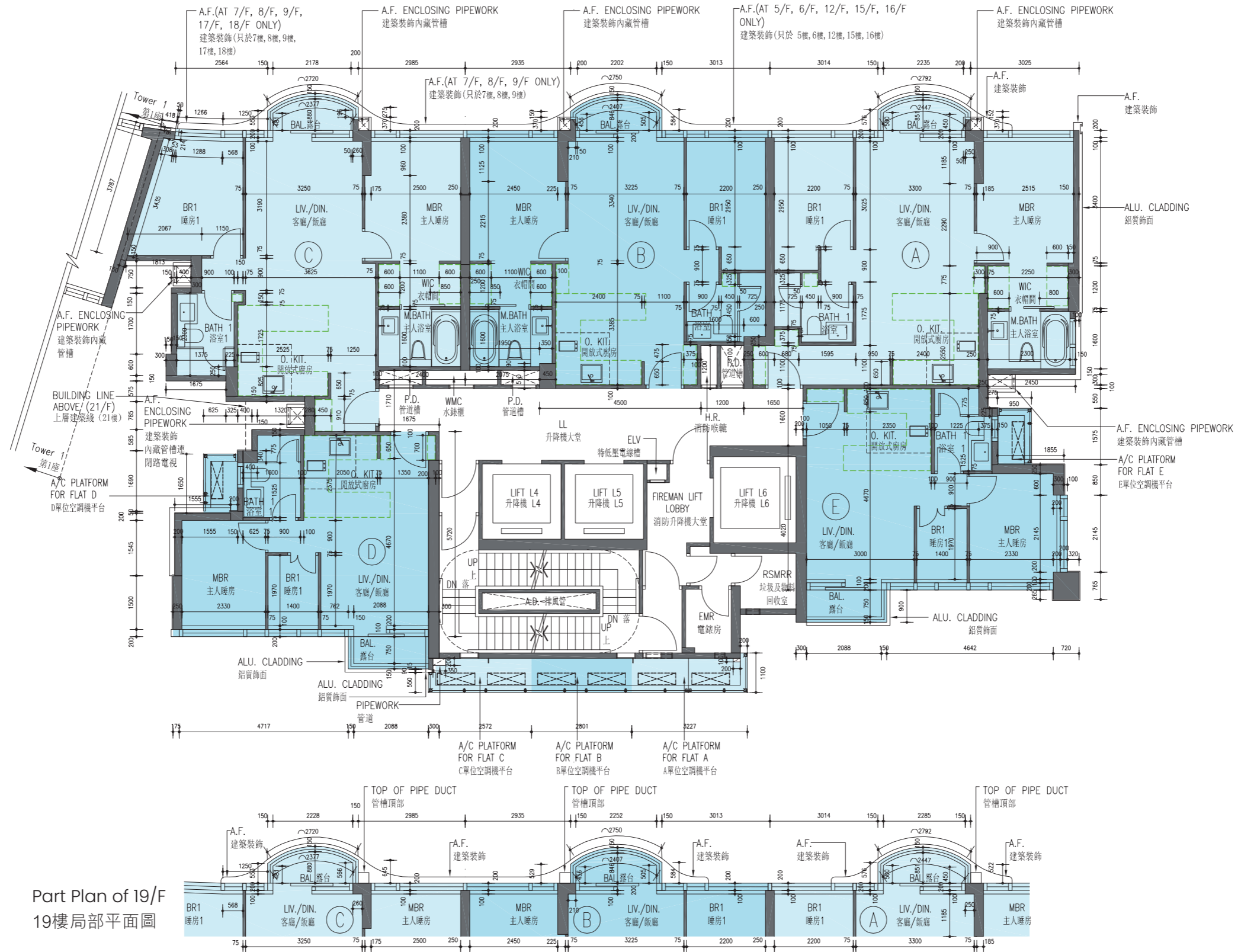
**備註：**

1. 樓面平面圖所列之所有尺寸均以毫米標示。
2. 樓面平面圖中的名稱及簡稱請參閱本售樓說明書第23頁。

# FLOOR PLANS OF RESIDENTIAL PROPERTIES IN THE DEVELOPMENT

# 發展項目的住宅物業的樓面平面圖

TOWER 2 | 11/F-12/F & 15/F-19/F  
 第2座 | 11樓至12樓及15樓至19樓



Part Plan of 19/F  
 19樓局部平面圖

Scale: 0  
 比例: 6M (米)

TOWER 2 | 11/F-12/F & 15/F-19/F  
第2座 | 11樓至12樓及15樓至19樓

	Floor 樓層	Flat 單位				
		A	B	C	D	E
The thickness of the floor slabs (excluding plaster) of each residential property (mm) 每個住宅物業的樓板（不包括灰泥）的厚度（毫米）	11/F-12/F, 15/F-18/F 11樓至12樓、15樓至18樓	150	150	150, 200	150, 250	150, 175, 200
	19/F 19樓	200	200	200	200	200
The floor-to-floor height of each residential property (mm) 每個住宅物業的層與層之間的高度（毫米）	11/F-12/F, 15/F-18/F 11樓至12樓、15樓至18樓	3500, 3500◇, 3500#, 3500☆, 3500◎	3500, 3500◇, 3500#, 3500◎	3500, 3500◇, 3500◎	3500, 3500◇, 3500#, 3500◎	3500, 3500#, 3500◎
	19/F 19樓	3700, 3760◇, 3850#, 4000☆, 4100◎	3700, 3760◇, 3850#, 4100◎	3700, 3760◇, 4100◎	3700, 3760◇, 3850 #, 4100◎	3700, 3850 #, 4100◎

- ◇ Inclusive of the sunken depth of the sunken slab on the floor of this floor (60mm)
- # Inclusive of the sunken depth of the sunken slab on the floor of this floor (150mm)
- ☆ Inclusive of the sunken depth of the sunken slab on the floor of this floor (300mm)
- ◎ Inclusive of the sunken depth of the sunken slab on the floor of this floor (400mm)

- ◇ 包括本層地台跌級樓板之跌級深度（60毫米）
- # 包括本層地台跌級樓板之跌級深度（150毫米）
- ☆ 包括本層地台跌級樓板之跌級深度（300毫米）
- ◎ 包括本層地台跌級樓板之跌級深度（400毫米）

The internal areas of the residential properties on the upper floors will generally be slightly larger than those on the lower floors because of the reducing thickness of the structural walls on the upper floors. (Note: This statement required under Section 10(2)(e) in Part I of Schedule 1 to the Residential Properties (First-hand Sales) Ordinance (Cap.621) is not applicable to the Development.)

因住宅物業的較高樓層的結構牆的厚度遞減，較高樓層的內部面積，一般比較低樓層的內部面積稍大。（註：此根據《一手住宅物業銷售條例》（第621章）附表1第1部第10(2)(e)條所規定的陳述並不適用於發展項目。）

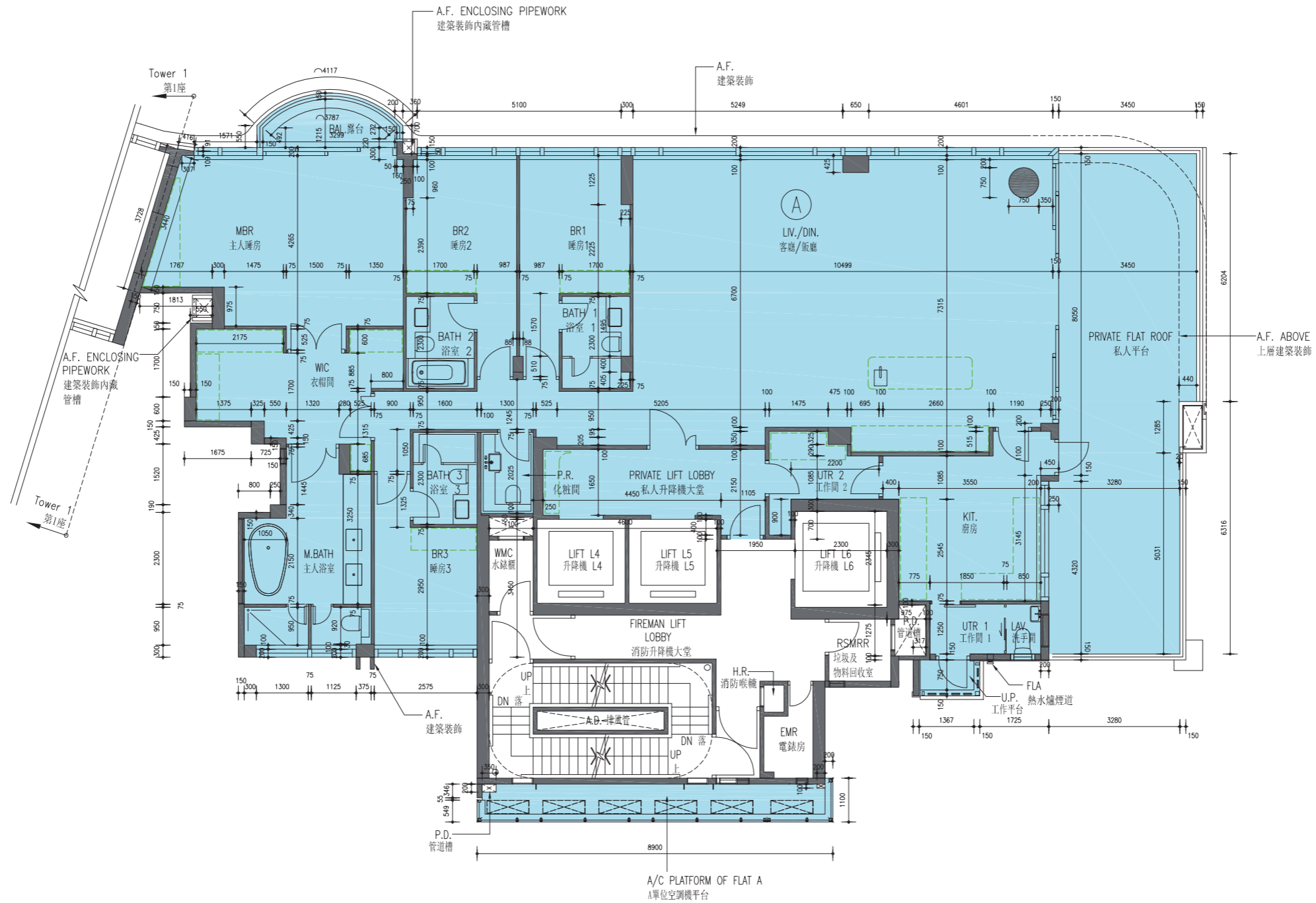
Notes:

1. The dimensions in floor plans are all structural dimensions in millimetre.
2. Please refer to page 23 of this sales brochure for legend of terms and abbreviations shown on the floor plans.

備註：

1. 樓面平面圖所列之所有尺寸均以毫米標示。
2. 樓面平面圖中的名稱及簡稱請參閱本售樓說明書第23頁。

TOWER 2 | 21/F  
第2座 | 21樓



Scale: 0  
比例: 6M (米)

TOWER 2 | 21/F

第2座 | 21樓

	Floor 樓層	Flat 單位
		A
The thickness of the floor slabs (excluding plaster) of each residential property (mm) 每個住宅物業的樓板（不包括灰泥）的厚度（毫米）	21/F 21樓	150, 200
The floor-to-floor height of each residential property (mm) 每個住宅物業的層與層之間的高度（毫米）		3500, 3500##, 3500☆☆

## Inclusive of the sunken depth of the sunken slab on the floor of this floor (550mm)

☆☆ Inclusive of the sunken depth of the sunken slab on the floor of this floor (600mm)

## 包括本層地台跌級樓板之跌級深度（550毫米）

☆☆ 包括本層地台跌級樓板之跌級深度（600毫米）

The internal areas of the residential properties on the upper floors will generally be slightly larger than those on the lower floors because of the reducing thickness of the structural walls on the upper floors. (Note: This statement required under Section 10(2)(e) in Part I of Schedule 1 to the Residential Properties (First-hand Sales) Ordinance (Cap.621) is not applicable to the Development.)

Notes:

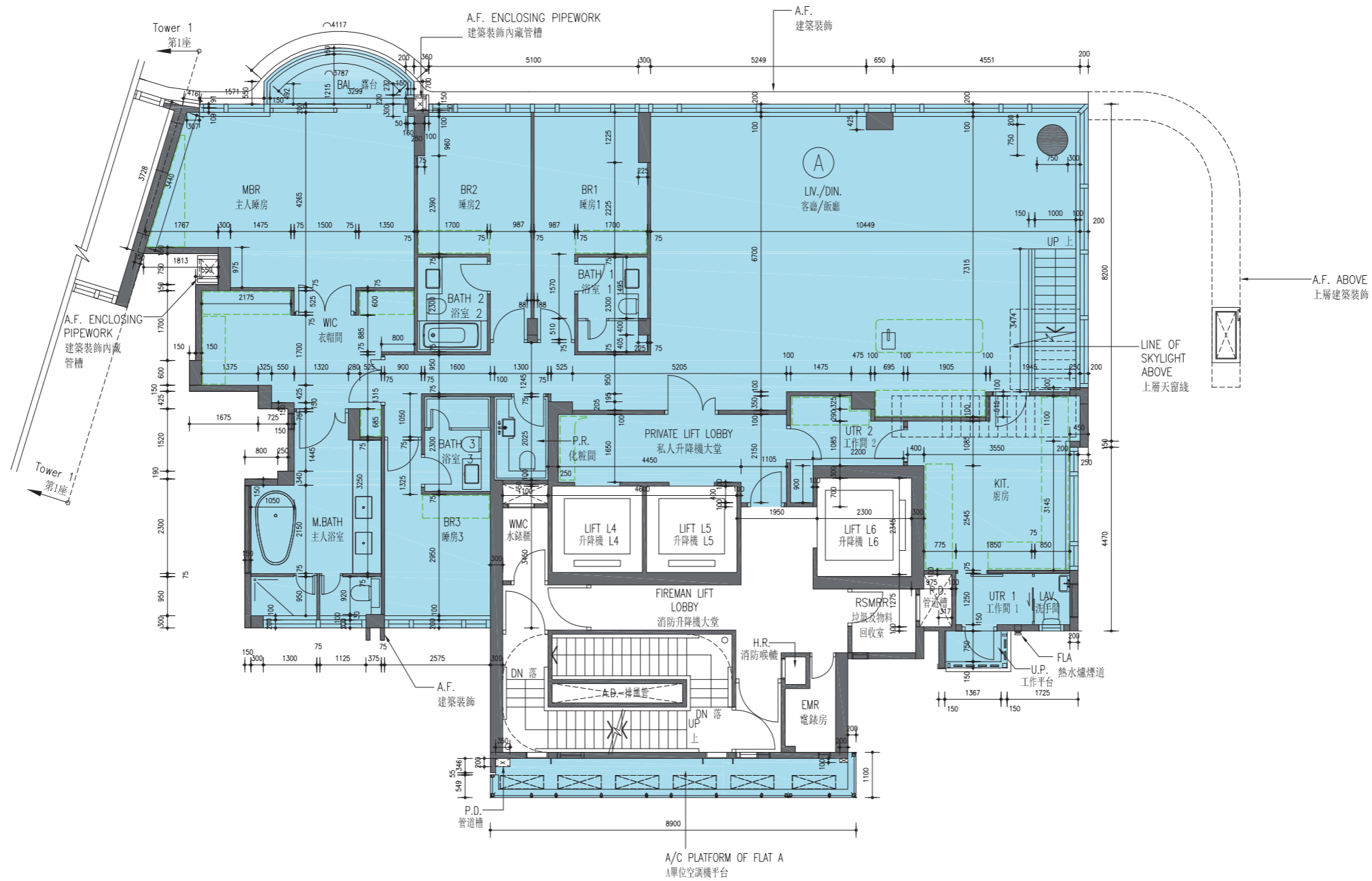
1. The dimensions in floor plans are all structural dimensions in millimetre.
2. Please refer to page 23 of this sales brochure for legend of terms and abbreviations shown on the floor plans.

因住宅物業的較高樓層的結構牆的厚度遞減，較高樓層的內部面積，一般比較低樓層的內部面積稍大。（註：此根據《一手住宅物業銷售條例》（第621章）附表1第1部第10(2)(e)條所規定的陳述並不適用於發展項目。）

備註：

1. 樓面平面圖所列之所有尺寸均以毫米標示。
2. 樓面平面圖中的名稱及簡稱請參閱本售樓說明書第23頁。

TOWER 2 | 22/F  
第2座 | 22樓



Scale: 0  
比例: 6M (米)



TOWER 2 | 22/F

第2座 | 22樓

	Floor 樓層	Flat 單位
		A
The thickness of the floor slabs (excluding plaster) of each residential property (mm) 每個住宅物業的樓板（不包括灰泥）的厚度（毫米）	22/F 22樓	150, 250
The floor-to-floor height of each residential property (mm) 每個住宅物業的層與層之間的高度（毫米）		4000, 4000##, 4600☆☆

## Inclusive of the sunken depth of the sunken slab on the floor of this floor (550mm)

☆☆ Inclusive of the sunken depth of the sunken slab on the floor of this floor (600mm)

## 包括本層地台跌級樓板之跌級深度（550毫米）

☆☆ 包括本層地台跌級樓板之跌級深度（600毫米）

The internal areas of the residential properties on the upper floors will generally be slightly larger than those on the lower floors because of the reducing thickness of the structural walls on the upper floors. (Note: This statement required under Section 10(2)(e) in Part I of Schedule 1 to the Residential Properties (First-hand Sales) Ordinance (Cap.621) is not applicable to the Development.)

Notes:

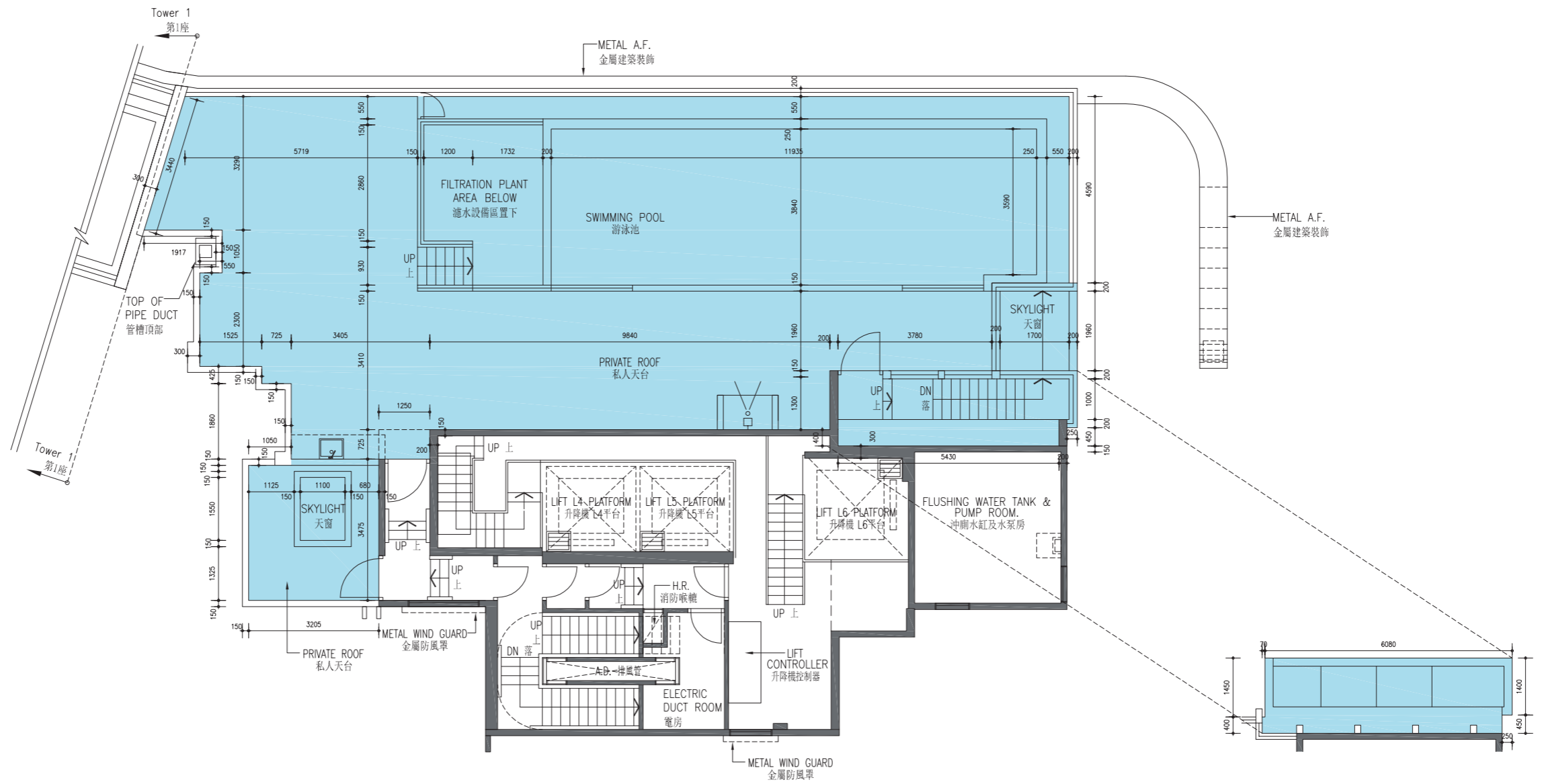
1. The dimensions in floor plans are all structural dimensions in millimetre.
2. Please refer to page 23 of this sales brochure for legend of terms and abbreviations shown on the floor plans.

因住宅物業的較高樓層的結構牆的厚度遞減，較高樓層的內部面積，一般比較低樓層的內部面積稍大。（註：此根據《一手住宅物業銷售條例》（第621章）附表1第1部第10(2)(e)條所規定的陳述並不適用於發展項目。）

備註：

1. 樓面平面圖所列之所有尺寸均以毫米標示。
2. 樓面平面圖中的名稱及簡稱請參閱本售樓說明書第23頁。

TOWER 2 | Roof  
第2座 | 天台



Part Plan of Top of stairhood  
梯屋頂部局部平面圖

Scale: 0 6M (米)  
比例 :

TOWER 2 | Roof

第2座 | 天台

	Floor 樓層	Flat 單位
		A
The thickness of the floor slabs (excluding plaster) of each residential property (mm) 每個住宅物業的樓板（不包括灰泥）的厚度（毫米）	Roof Floor 天台	Not applicable 不適用
The floor-to-floor height of each residential property (mm) 每個住宅物業的層與層之間的高度（毫米）		

The internal areas of the residential properties on the upper floors will generally be slightly larger than those on the lower floors because of the reducing thickness of the structural walls on the upper floors. (Note: This statement required under Section 10(2)(e) in Part I of Schedule 1 to the Residential Properties (First-hand Sales) Ordinance (Cap.621) is not applicable to the Development.)

Notes:

1. The dimensions in floor plans are all structural dimensions in millimetre.
2. Please refer to page 23 of this sales brochure for legend of terms and abbreviations shown on the floor plans.

因住宅物業的較高樓層的結構牆的厚度遞減，較高樓層的內部面積，一般比較低樓層的內部面積稍大。（註：此根據《一手住宅物業銷售條例》（第621章）附表1第1部第10(2)(e)條所規定的陳述並不適用於發展項目。）

備註：

1. 樓面平面圖所列之所有尺寸均以毫米標示。
2. 樓面平面圖中的名稱及簡稱請參閱本售樓說明書第23頁。