

This blank area falls outside the coverage of the relevant aerial photograph
鳥瞰照片並不覆蓋本空白範圍

Extract from part of the aerial photograph taken by the Survey and Mapping Office of the Lands Department at a flying height of 6,900 feet, Photo No. E177301C, date of flight: 23 December 2022.

摘錄自地政總署測繪處在6,900呎的飛行高度拍攝之鳥瞰照片，照片編號E177301C，飛行日期：2022年12月23日。

● Location of the Development
發展項目的位置

Notes:

1. Copy of the aerial photograph of the Development is available for free inspection at the sales office(s) during opening hours.
2. Due to technical reasons (such as the shape of the Development), the aerial photograph has shown area more than that required under the Residential Properties (First-hand Sales) Ordinance.
3. The Vendor also advises prospective purchasers to conduct on-site visit for a better understanding of the development site, its surrounding environment and the public facilities nearby.

備註：

1. 發展項目的鳥瞰照片之副本可於開放時間向售樓處免費查閱。
2. 因技術原因（例如發展項目之形狀）、鳥瞰照片所顯示之範圍多於《一手住宅物業銷售條例》所要求顯示的範圍。
3. 賣方亦建議準買方到該發展地盤作實地考察，以獲取對該發展地盤、以及周邊地區的環境及附近的公共設施有較佳的了解。

Survey and Mapping Office, Lands Department, The Government of HKSAR © Copyright reserved - reproduction by permission only.

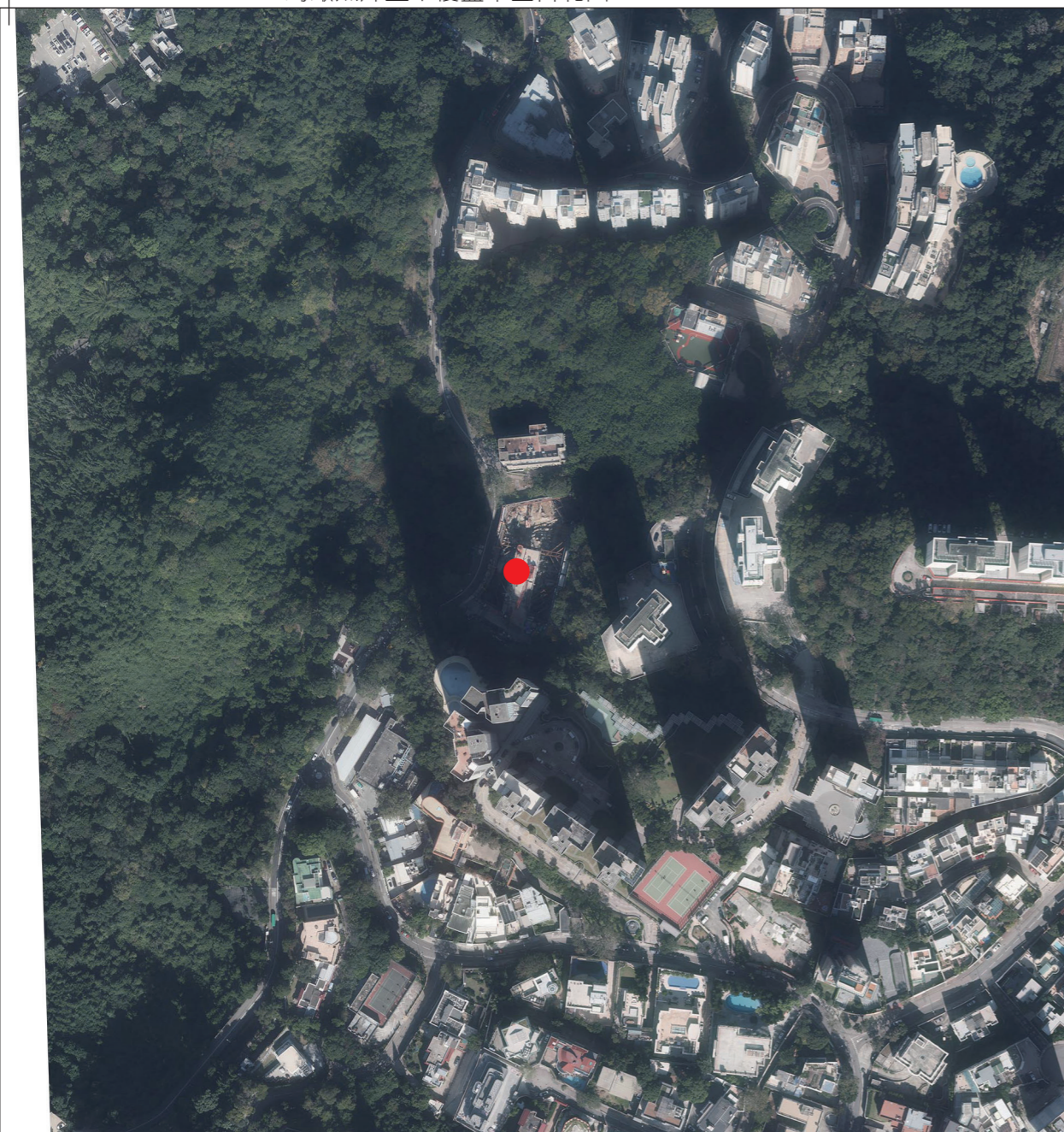
香港特別行政區政府地政總署測繪處版權所有，未經許可，不得複製。

AERIAL PHOTOGRAPH OF THE DEVELOPMENT

發展項目的鳥瞰照片

This blank area falls outside the coverage of the relevant aerial photograph

鳥瞰照片並不覆蓋本空白範圍



Extract from part of the aerial photograph taken by the Survey and Mapping Office of the Lands Department at a flying height of 6,900 feet, Photo No. E177302C, date of flight: 23 December 2022.

摘錄自地政總署測繪處在6,900呎的飛行高度拍攝之鳥瞰照片，照片編號E177302C，飛行日期：2022年12月23日。

● Location of the Development
發展項目的位置

Notes:

1. Copy of the aerial photograph of the Development is available for free inspection at the sales office(s) during opening hours.
2. Due to technical reasons (such as the shape of the Development), the aerial photograph has shown area more than that required under the Residential Properties (First-hand Sales) Ordinance.
3. The Vendor also advises prospective purchasers to conduct on-site visit for a better understanding of the development site, its surrounding environment and the public facilities nearby.

備註：

1. 發展項目的鳥瞰照片之副本可於開放時間向售樓處免費查閱。
2. 因技術原因（例如發展項目之形狀）、鳥瞰照片所顯示之範圍多於《一手住宅物業銷售條例》所要求顯示的範圍。
3. 賣方亦建議準買方到該發展地盤作實地考察，以獲取對該發展地盤、以及周邊地區的環境及附近的公共設施有較佳的了解。

Survey and Mapping Office, Lands Department, The Government of HKSAR © Copyright reserved - reproduction by permission only.

香港特別行政區政府地政總署測繪處版權所有，未經許可，不得複製。