

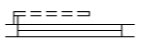
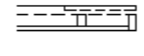
FLOOR PLANS OF RESIDENTIAL PROPERTIES IN THE PHASE

期數的住宅物業的樓面平面圖

Legend of Terms and Abbreviations used on Floor Plans:

樓面平面圖中所使用名詞及簡稱之圖例：

| | | |
|--|---|---|
| A/C | = | AIR CONDITIONER PLATFORM 冷氣機平台 |
| A/C ABOVE | = | AIR CONDITIONER PLATFORM ABOVE 冷氣機平台置上 |
| A/C P. | = | AIR CONDITIONER PLINTH 冷氣機台 |
| ACOUSTIC BALCONY | = | 減音露台 |
| ACOUSTIC BALCONY (BAFFLE TYPE) | = | 減音露台 (擋音式) |
| ACOUSTIC FIN WITH SOUND ABSORPTION MATERIAL | = | 隔聲鰭連吸音物料 |
| ACOUSTIC WINDOW | = | 減音窗 |
| A.D. | = | AIR DUCT 氣管道 |
| A.F. | = | ARCHITECTURAL FEATURE 建築裝飾 |
| A.F. ABOVE | = | ARCHITECTURAL FEATURE ABOVE 建築裝飾置上 |
| BAL. | = | BALCONY 露台 |
| BA 1 | = | BATHROOM 1 浴室 1 |
| BA 2 | = | BATHROOM 2 浴室 2 |
| BR 1 | = | BEDROOM 1 睡房 1 |
| BR 2 | = | BEDROOM 2 睡房 2 |
| BR 3 | = | BEDROOM 3 睡房 3 |
| DN | = | DOWN 落 |
| DIN. | = | DINING ROOM 飯廳 |
| ELV. RM. | = | EXTRA LOW VOLTAGE ROOM 特低壓機電房 |
| ELV. DUCT | = | EXTRA LOW VOLTAGE DUCT 特低壓管 |
| EMR | = | ELECTRICAL METER ROOM 電錶房 |
| FIREMAN'S LIFT LOBBY | = | 消防員升降機大堂 |
| HR | = | HOSE REEL 消防喉轆 |
| KIT. | = | KITCHEN 廚房 |
| LAV. | = | LAVATORY 洗手間 |
| LIFT | = | 升降機 |
|  | = | FIXED GLAZING / FIXED GLAZING WITH MAINTENANCE WINDOW (FORMING PART OF THE NOISE MITIGATION MEASURES) 隔音玻璃 / 隔音玻璃連維修窗戶(構成噪音緩解措施的一部分) |
|  | = | BALCONY WITH SLIDING PANEL BEHIND (ACOUSTIC BALCONY(BAFFLE TYPE)) 露台連同滑動面板在後 (減音露台 (擋音式)) |

| | | |
|---|---|---|
| LIV. | = | LIVING ROOM 客廳 |
| MAINTENANCE ROOF (COMMON AREA) | = | 維修平台 (公用地方) |
| MBA | = | MASTER BATHROOM 主人浴室 |
| MBR | = | MASTER BEDROOM 主人睡房 |
| OPEN KIT. | = | OPEN KITCHEN 開放式廚房 |
| P.D. | = | PIPE DUCT 管道槽 |
| P.D. RM. | = | PIPE DUCT ROOM 管道槽房 |
| POWDER RM. | = | POWDER ROOM 化妝間 |
| P.W. | = | PIPE WELL 管井 |
| RCAF. | = | REINFORCED CONCRETE ARCHITECTURAL FEATURE 鋼筋混凝土建築裝飾 |
| RCAF. ABOVE | = | REINFORCED CONCRETE ARCHITECTURAL FEATURE ABOVE 鋼筋混凝土建築裝飾置上 |
| RCAF. BELOW | = | REINFORCED CONCRETE ARCHITECTURAL FEATURE BELOW 鋼筋混凝土建築裝飾置下 |
| RSMRR | = | REFUSE STORAGE AND MATERIAL RECOVERY ROOM 垃圾及物料回收室 |
| SC | = | UTILITY PLATFORM WITH AUTO-CLOSING MECHANISM 設有自動關門裝置的工作平台 |
| ST | = | STORE ROOM 儲物房 |
| UP | = | 上 |
| U.P. | = | UTILITY PLATFORM 工作平台 |
| UTIL. | = | UTILITY 工作間 |
| V.D. | = | VENT DUCT 風管 |
| WMC | = | WATER METER CABINET 水錶櫃 |
|  /  | = | WINDOW WITH SLIDING PANEL BEHIND (ACOUSTIC WINDOW(BAFFLE TYPE)) 窗戶連同滑動面板在後 (減音窗 (擋音式)) |

FLOOR PLANS OF RESIDENTIAL PROPERTIES IN THE PHASE

期數的住宅物業的樓面平面圖

REMARKS:

1. There may be architectural features and/or exposed pipes on external walls and common flat roof of some floors.
2. Common pipes exposed and/or enclosed in pipe ducts are located at/adjacent to Balcony and/or Flat Roof and/or air conditioner platform and/or external wall of some units.
3. There are ceiling bulkheads at Living Rooms, Dining Rooms, Bedrooms, Corridors, Open Kitchens, Kitchens, Bathrooms, Powder Rooms, Lavatories, Store Rooms and/or Utilities of some units for the air-conditioning system and/or other Mechanical and Electrical services.
4. The ceiling height of some units may vary due to structural, architectural and/or decoration design variations.
5. Symbols of fittings and fitments shown on the floor plans, such as bathtubs, sinks, water closets, showers, sink counters, etc. are retrieved from the latest approved building plans and are for general indication only.
6. Balconies and Utility Platforms are non-enclosed area.
7. During the necessary maintenance of the external walls of Tower 6 and Tower 8 arranged by Manager of the Phase, the gondola will be operating in the airspace outside windows and above Flat Roof / Roof (if any) of the residential properties in such towers.
8. There are exposed pipes mounted at part of flat roof on 3/F (lowest residential floor) of each tower in the Phase. Only part of the exposed pipes are covered by painted aluminium cover.
9. For some residential units, the air conditioner platform(s) outside the unit will be placed with outdoor air conditioner unit(s) belonging to that unit and/or other residential units.
10. Noise mitigation measures including acoustic fin(s) with sound absorption material (which may affect the views outside the individual residential property(ies)), acoustic window(s), fixed glazing/ fixed glazing with maintenance window(s), acoustic balcony(ies)/ acoustic balcony(ies) (baffle type) and utility platform(s) with auto-closing mechanism (collectively the "NMM") are provided in certain residential properties within the Phase of the Development. The Vendor has advised prospective purchasers to refer to the sections of "Floor Plans of Residential Properties in the Phase" and "Relevant Information" in the sales brochure of the Phase of the Development for the location of each NMM. The owners of any residential property with any NMM shall at their own cost and expense keep and maintain such NMM in good repair and substantial repair and condition. No owners shall do or permit any act or thing to be done which may in any way damage or affect the NMM.

附註：

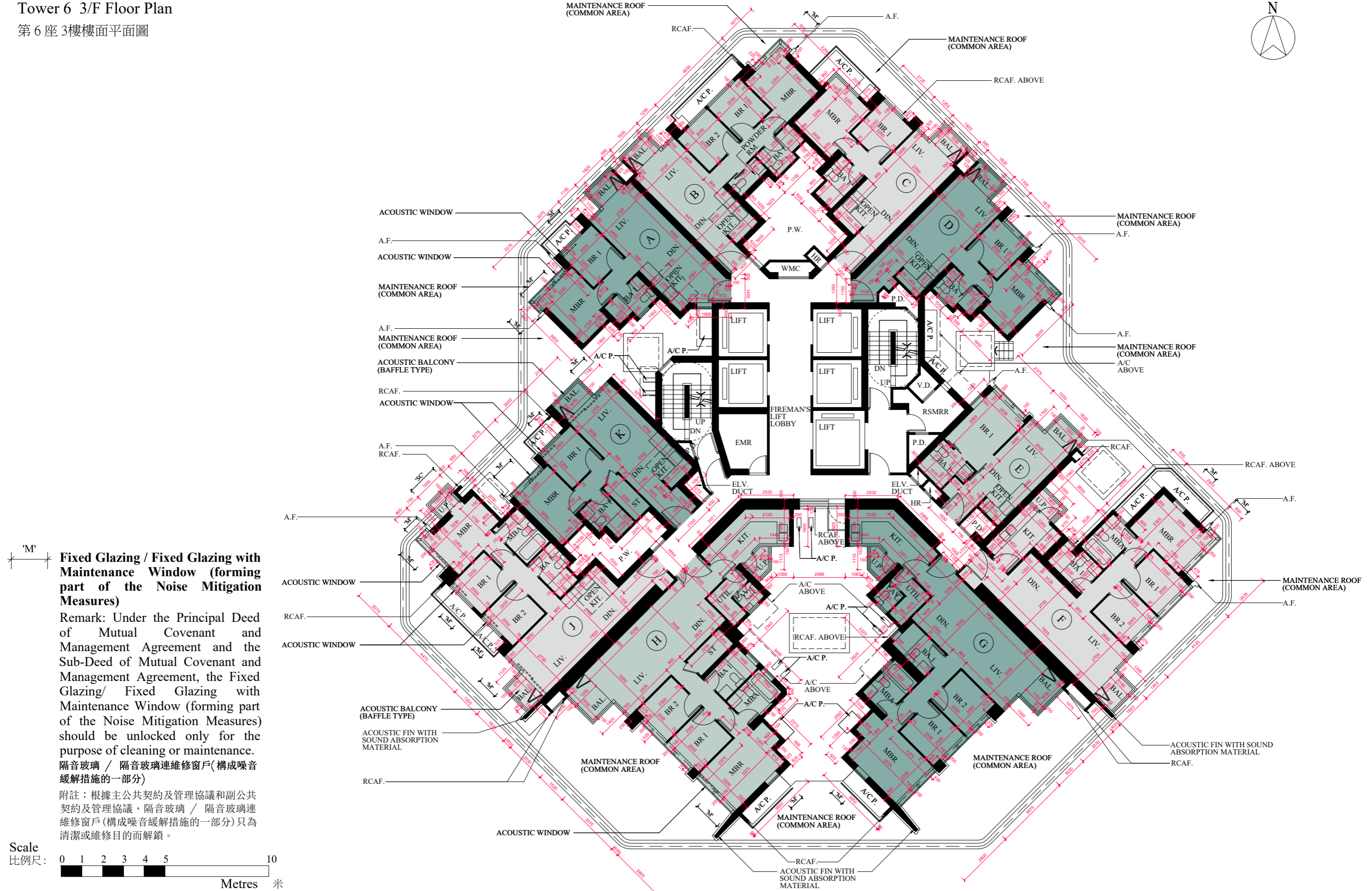
1. 部分樓層外牆及公用平台設有建築裝飾及／或外露喉管。
2. 外露及／或內藏於管道槽的公用喉管位於／鄰近部分單位的露台及／或平台及／或冷氣機平台及／或外牆。
3. 部分單位客廳、飯廳、睡房、走廊、開放式廚房、廚房、浴室、化妝間、洗手間、儲物房及／或工作間之假天花內裝置有冷氣系統及／或其他機電設備。
4. 部分單位之天花高度將會因應結構、建築設計及／或裝修設計上的需要而有差異。
5. 樓面平面圖上所顯示的形象裝置符號，例如浴缸、洗滌盆、坐廁、花灑、洗滌盆櫃等乃摘自最新的經批准的建築圖則，只作一般性標誌。
6. 露台及工作平台為不可封閉的地方。
7. 在期數管理人安排於第 6 座及第 8 座外牆之必要維修進行期間，吊船將在該等大廈的住宅物業之窗戶外及平台/天台（如有）上之空間運作。
8. 期數內的每座大廈的部分 3 樓平台（最低住宅樓層）上裝設有外露喉管，只有部分外露喉管能被油漆鋁蓋所覆蓋。
9. 部分住宅單位外的冷氣機平台將會放置屬於其單位及／或其他住宅單位的一部或多部冷氣室外機。
10. 噪音緩解措施包括提供於發展項目期數的個別住宅物業的隔聲簷連吸音物料（隔聲簷連吸音物料或會對個別住宅物業對外之景觀造成影響）、減音窗、隔音玻璃／隔音玻璃連維修窗戶、減音露台/ 減音露台(擋音式)和設有自動關門裝置的工作平台（統稱「噪音緩解措施」）。賣方已建議準買家參閱發展項目期數的售樓說明書的「期數的住宅物業的樓面平面圖」及「有關資料」等章節以了解各噪音緩解措施的位置。設有噪音緩解措施的任何住宅物業之業主須自費保養和維修該等噪音緩解措施，以保持其修繕妥當及狀況良好。任何業主不得作出或允許作出可能以任何方式損害或影響噪音緩解措施的行為或事情。

FLOOR PLANS OF RESIDENTIAL PROPERTIES IN THE PHASE

期數的住宅物業的樓面平面圖

Tower 6 3/F Floor Plan

第6座3樓樓面平面圖

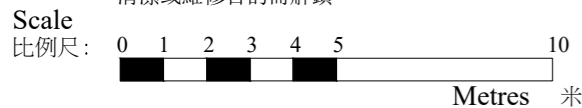


Fixed Glazing / Fixed Glazing with Maintenance Window (forming part of the Noise Mitigation Measures)

Remark: Under the Principal Deed of Mutual Covenant and Management Agreement and the Sub-Deed of Mutual Covenant and Management Agreement, the Fixed Glazing/ Fixed Glazing with Maintenance Window (forming part of the Noise Mitigation Measures) should be unlocked only for the purpose of cleaning or maintenance.

隔音玻璃 / 隔音玻璃連維修窗戶(構成噪音緩解措施的一部分)

附註：根據主公共契約及管理協議和副公共契約及管理協議，隔音玻璃 / 隔音玻璃連維修窗戶(構成噪音緩解措施的一部分)只為清潔或維修目的而解鎖。



FLOOR PLANS OF RESIDENTIAL PROPERTIES IN THE PHASE

期數的住宅物業的樓面平面圖

Tower 6 第 6 座

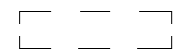
| Each Residential Property 每個住宅物業 | Tower Number 座數 | Flat 單位 | A | B | C | D | E | F | G | H | J | K |
|--|-------------------------|------------|------|------|------|------|------|------|------|------|------|------|
| | | Floor 樓層 | | | | | | | | | | |
| Floor-to-Floor Height (mm) 層與層之間的高度 (毫米) | Tower 6 第 6 座 | 3/F 3 樓 | 3000 | 3000 | 3000 | 3000 | 3000 | 3000 | 3000 | 3000 | 3000 | 3000 |
| Thickness of Floor Slab (excluding plaster) (mm) 樓板 (不包括灰泥) 的厚度 (毫米) | | 3/F 3 樓 | 150 | 150 | 150 | 150 | 150 | 150 | 150 | 150 | 150 | 150 |

The internal areas of the residential properties on the upper floors will generally be slightly larger than those on the lower floors because of the reducing thickness of the structural walls on the upper floors. (This does not apply to the residential properties in the Phase because the design of the Phase is such that the reducing thickness of the structural walls of residential properties on the upper floors does not increase the internal areas of those residential properties.)
因住宅物業的較高樓層的結構牆的厚度遞減，較高樓層的內部面積，一般比較低樓層的內部面積稍大。(不適用於期數內的住宅物業，因為期數的設計是較高樓層的住宅物業的結構牆的厚度遞減不會增加該等住宅物業內部面積。)

Note 1: Please refer to page AL01 - page AL02 of this sales brochure for remarks, legend of terms and abbreviations shown on this floor plan.
備註 1: 有關樓面平面圖中顯示之附註、名詞及簡稱請參閱本售樓說明書第 AL01 頁 - AL02 頁。

Note 2: The dimensions of floor plans are all structural dimensions in millimeter.
備註 2: 樓面平面圖之尺規所列之數字為以毫米標示之建築結構尺寸。

Note 3: Dotted line in the format shown below delineates the extent of open kitchen area (if any) in a residential unit.

 Extent of open kitchen area

備註 3: 以下格式之虛線勾劃代表住宅單位內的開放式廚房範圍(如有)。

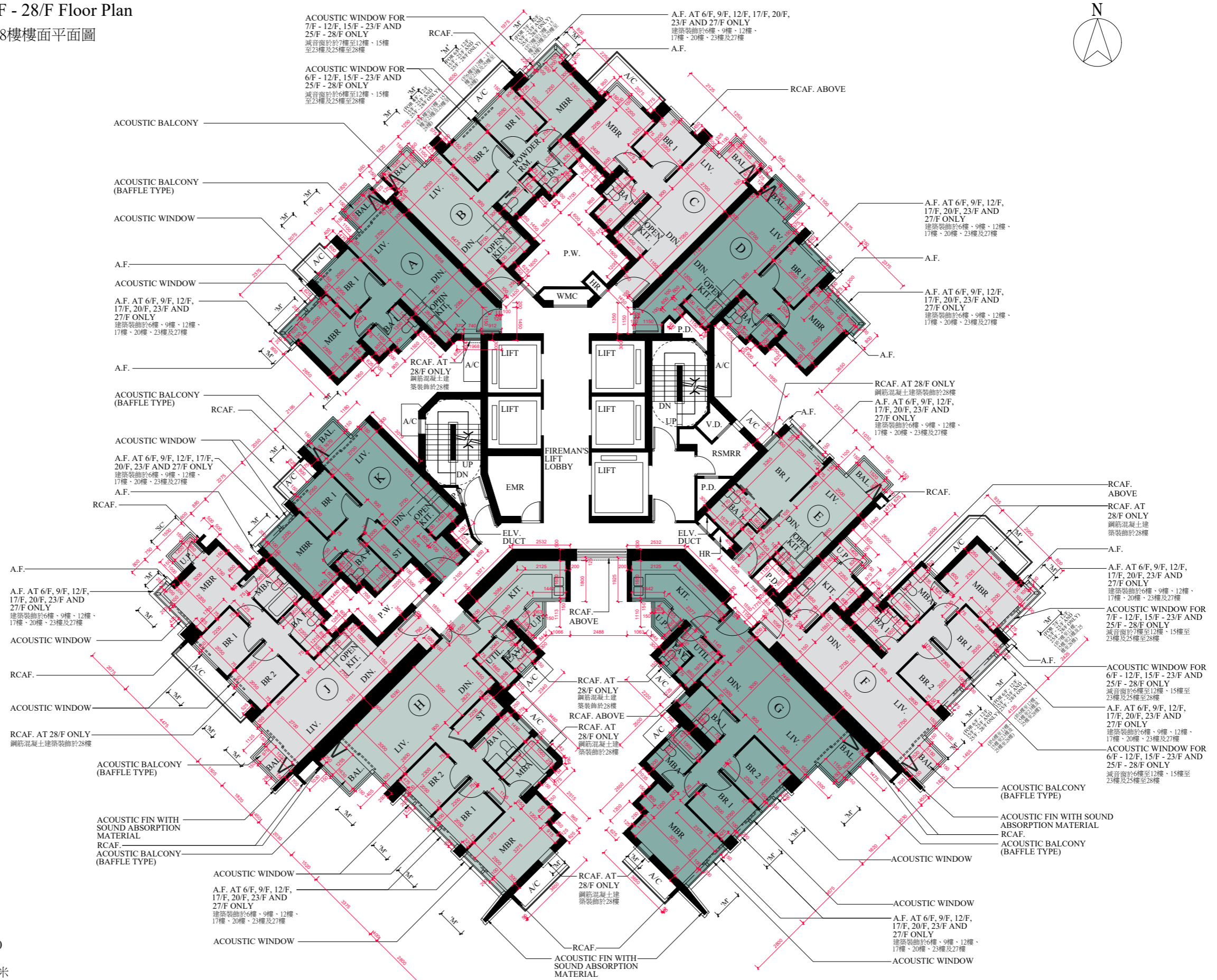
 開放式廚房範圍

FLOOR PLANS OF RESIDENTIAL PROPERTIES IN THE PHASE

期數的住宅物業的樓面平面圖

Tower 6 5/F - 12/F, 15/F - 23/F and 25/F - 28/F Floor Plan

第 6 座 5樓至12樓、15樓至23樓及25樓至28樓樓面平面圖



Fixed Glazing / Fixed Glazing with Maintenance Window (forming part of the Noise Mitigation Measures)

Remark: Under the Principal Deed of Mutual Covenant and Management Agreement and the Sub-Deed of Mutual Covenant and Management Agreement, the Fixed Glazing/ Fixed Glazing with Maintenance Window (forming part of the Noise Mitigation Measures) should be unlocked only for the purpose of cleaning or maintenance.
 隔音玻璃 / 隔音玻璃連維修窗戶(構成噪音緩解措施的一部分)

附註：根據主公共契約及管理協議和副公共契約及管理協議，隔音玻璃 / 隔音玻璃連維修窗戶(構成噪音緩解措施的一部分)只為清潔或維修目的而解鎖。



FLOOR PLANS OF RESIDENTIAL PROPERTIES IN THE PHASE

期數的住宅物業的樓面平面圖

Tower 6 第 6 座

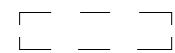
| Each Residential Property 每個住宅物業 | Tower Number 座數 | Flat 單位 | A | B | C | D | E | F | G | H | J | K |
|--|-------------------------|---|---------------------|---------------------|---------------------|---------------------|------------|------------|---------------------|---------------------|---------------------|---------------------|
| | | Floor 樓層 | | | | | | | | | | |
| Floor-to-Floor Height (mm) 層與層之間的高度 (毫米) | Tower 6 第 6 座 | 5/F-12/F, 15/F-23/F and 25/F-27/F 5 樓至 12 樓、15 樓至 23 樓及 25 樓至 27 樓 | 3000 | 3000 | 3000 | 3000 | 3000 | 3000 | 3000 | 3000 | 3000 | 3000 |
| | | 28/F 28 樓 | 3000, 3100, 3300 | 3000, 3100, 3300 | 3000, 3100, 3300 | 3000, 3100, 3300 | 3000, 3300 | 3000, 3300 | 3000, 3100, 3300 | 3000, 3100, 3300 | 3000, 3100, 3300 | 3000, 3100, 3300 |
| 5/F-12/F, 15/F-23/F and 25/F-27/F 5 樓至 12 樓、15 樓至 23 樓及 25 樓至 27 樓 | | 150 | 150 | 150 | 150 | 150 | 150 | 150 | 150 | 150 | 150 | 150 |
| 28/F 28 樓 | | 150 | 150 | 150 | 150 | 150 | 150 | 150 | 150 | 150 | 150 | 150 |
| Thickness of Floor Slab (excluding plaster) (mm) 樓板 (不包括灰泥) 的厚度 (毫米) | | | | | | | | | | | | |

The internal areas of the residential properties on the upper floors will generally be slightly larger than those on the lower floors because of the reducing thickness of the structural walls on the upper floors. (This does not apply to the residential properties in the Phase because the design of the Phase is such that the reducing thickness of the structural walls of residential properties on the upper floors does not increase the internal areas of those residential properties.)
因住宅物業的較高樓層的結構牆的厚度遞減，較高樓層的內部面積，一般比較低樓層的內部面積稍大。(不適用於期數內的住宅物業，因為期數的設計是較高樓層的住宅物業的結構牆的厚度遞減不會增加該等住宅物業內部面積。)

Note 1: Please refer to page AL01 - page AL02 of this sales brochure for remarks, legend of terms and abbreviations shown on this floor plan.
備註 1: 有關樓面平面圖中顯示之附註、名詞及簡稱請參閱本售樓說明書第 AL01 頁 - AL02 頁。

Note 2: The dimensions of floor plans are all structural dimensions in millimeter.
備註 2: 樓面平面圖之尺規所列之數字為以毫米標示之建築結構尺寸。

Note 3: Dotted line in the format shown below delineates the extent of open kitchen area (if any) in a residential unit.

 Extent of open kitchen area

備註 3: 以下格式之虛線勾劃代表住宅單位內的開放式廚房範圍(如有)。

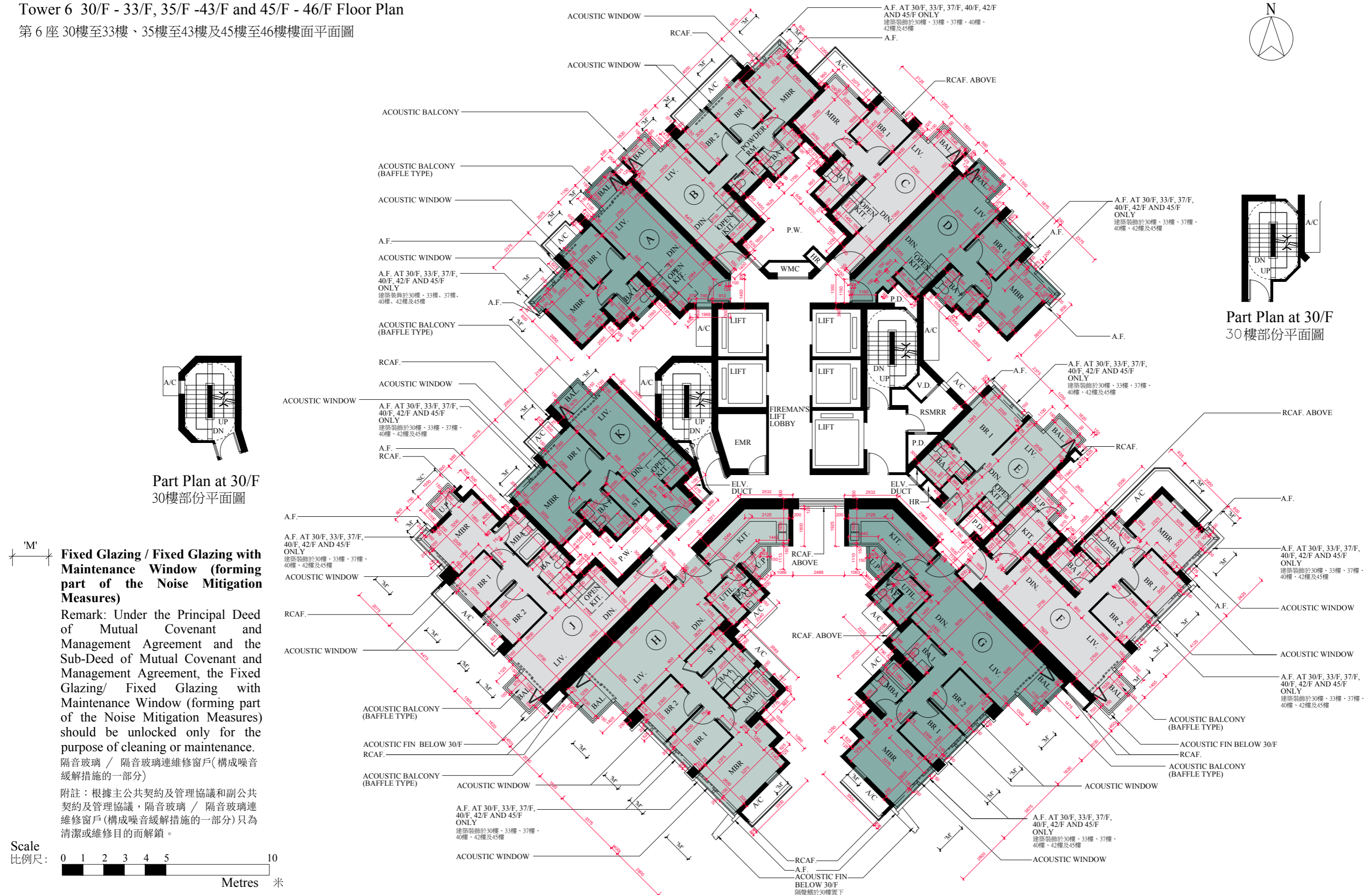
 開放式廚房範圍

FLOOR PLANS OF RESIDENTIAL PROPERTIES IN THE PHASE

期數的住宅物業的樓面平面圖

Tower 6 30/F - 33/F, 35/F -43/F and 45/F - 46/F Floor Plan

第 6 座 30樓至33樓、35樓至43樓及45樓至46樓樓面平面圖



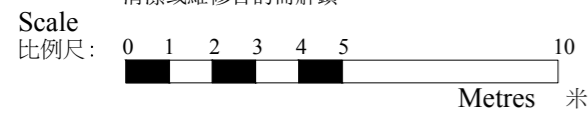
Part Plan at 30/F
30樓部份平面圖

Part Plan at 30/F
30樓部份平面圖

Fixed Glazing / Fixed Glazing with Maintenance Window (forming part of the Noise Mitigation Measures)

Remark: Under the Principal Deed of Mutual Covenant and Management Agreement and the Sub-Deed of Mutual Covenant and Management Agreement, the Fixed Glazing/ Fixed Glazing with Maintenance Window (forming part of the Noise Mitigation Measures) should be unlocked only for the purpose of cleaning or maintenance.
 隔音玻璃 / 隔音玻璃連維修窗戶(構成噪音緩解措施的一部分)

附註: 根據主公共契約及管理協議和副公共契約及管理協議, 隔音玻璃 / 隔音玻璃連維修窗戶(構成噪音緩解措施的一部分) 只為清潔或維修目的而解鎖。



FLOOR PLANS OF RESIDENTIAL PROPERTIES IN THE PHASE

期數的住宅物業的樓面平面圖

Tower 6 第 6 座

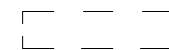
| Each Residential Property 每個住宅物業 | Tower Number 座數 | Flat 單位 | A | B | C | D | E | F | G | H | J | K |
|--|-------------------------|---|------|------|------|------|------|------|------|------|------|------|
| | | Floor 樓層 | | | | | | | | | | |
| Floor-to-Floor Height (mm) 層與層之間的高度 (毫米) | Tower 6 第 6 座 | 30/F-33/F, 35/F-43/F and 45/F-46/F 30 樓至 33 樓、35 樓至 43 樓及 45 樓至 46 樓 | 3000 | 3000 | 3000 | 3000 | 3000 | 3000 | 3000 | 3000 | 3000 | 3000 |
| Thickness of Floor Slab (excluding plaster) (mm) 樓板 (不包括灰泥) 的厚度 (毫米) | | 30/F-33/F, 35/F-43/F and 45/F-46/F 30 樓至 33 樓、35 樓至 43 樓及 45 樓至 46 樓 | 150 | 150 | 150 | 150 | 150 | 150 | 150 | 150 | 150 | 150 |

The internal areas of the residential properties on the upper floors will generally be slightly larger than those on the lower floors because of the reducing thickness of the structural walls on the upper floors. (This does not apply to the residential properties in the Phase because the design of the Phase is such that the reducing thickness of the structural walls of residential properties on the upper floors does not increase the internal areas of those residential properties.)
因住宅物業的較高樓層的結構牆的厚度遞減，較高樓層的內部面積，一般比較低樓層的內部面積稍大。(不適用於期數內的住宅物業，因為期數的設計是較高樓層的住宅物業的結構牆的厚度遞減不會增加該等住宅物業內部面積。)

Note 1: Please refer to page AL01 - page AL02 of this sales brochure for remarks, legend of terms and abbreviations shown on this floor plan.
備註 1: 有關樓面平面圖中顯示之附註、名詞及簡稱請參閱本售樓說明書第 AL01 頁 - AL02 頁。

Note 2: The dimensions of floor plans are all structural dimensions in millimeter.
備註 2: 樓面平面圖之尺規所列之數字為以毫米標示之建築結構尺寸。

Note 3: Dotted line in the format shown below delineates the extent of open kitchen area (if any) in a residential unit.

 Extent of open kitchen area

備註 3: 以下格式之虛線勾劃代表住宅單位內的開放式廚房範圍(如有)。

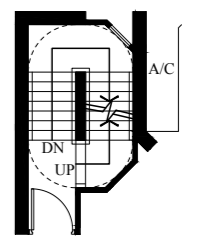
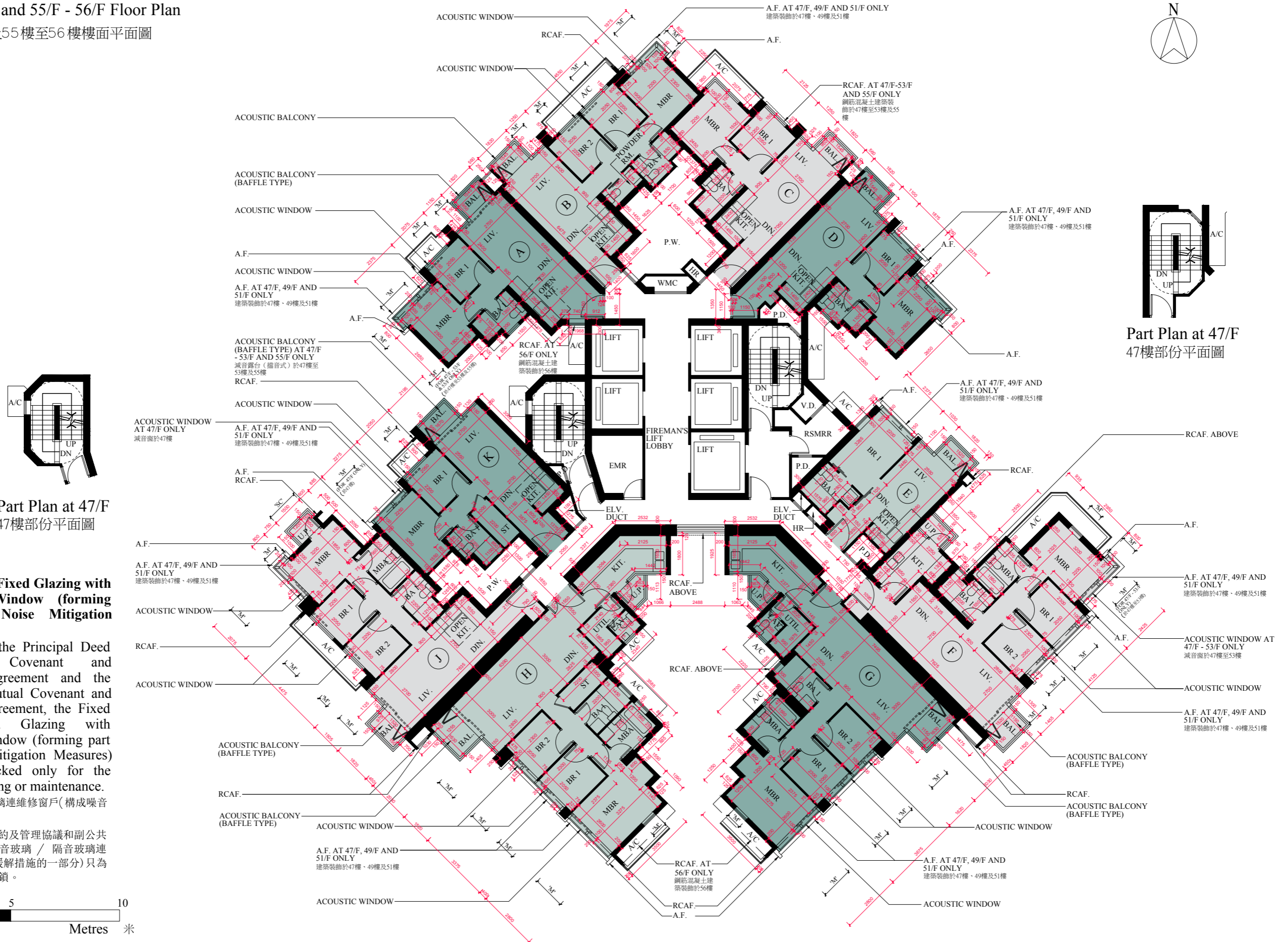
 開放式廚房範圍

FLOOR PLANS OF RESIDENTIAL PROPERTIES IN THE PHASE

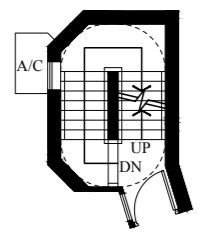
期數的住宅物業的樓面平面圖

Tower 6 47/F - 53/F and 55/F - 56/F Floor Plan

第 6 座 47 樓至 53 樓及 55 樓至 56 樓樓面平面圖



Part Plan at 47/F
47樓部份平面圖

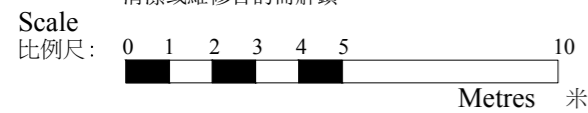


Part Plan at 47/F
47樓部份平面圖

Fixed Glazing / Fixed Glazing with Maintenance Window (forming part of the Noise Mitigation Measures)

Remark: Under the Principal Deed of Mutual Covenant and Management Agreement and the Sub-Deed of Mutual Covenant and Management Agreement, the Fixed Glazing/ Fixed Glazing with Maintenance Window (forming part of the Noise Mitigation Measures) should be unlocked only for the purpose of cleaning or maintenance.
 隔音玻璃 / 隔音玻璃連維修窗戶(構成噪音緩解措施的一部分)

附註: 根據主公共契約及管理協議和副公共契約及管理協議, 隔音玻璃 / 隔音玻璃連維修窗戶(構成噪音緩解措施的一部分) 只為清潔或維修目的而解鎖。



FLOOR PLANS OF RESIDENTIAL PROPERTIES IN THE PHASE

期數的住宅物業的樓面平面圖

Tower 6 第 6 座

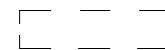
| Each Residential Property 每個住宅物業 | Tower Number 座數 | Flat 單位 | A | B | C | D | E | F | G | H | J | K |
|--|-----------------------|--|------------------------------------|------------------------------------|------|------|------|------|------|------|------|------|
| | | Floor 樓層 | | | | | | | | | | |
| Floor-to-Floor Height (mm) 層與層之間的高度 (毫米) | Tower 6 第 6 座 | 47/F-53/F and 55/F 47 樓至 53 樓及 55 樓 | 3300 | 3300 | 3300 | 3300 | 3300 | 3300 | 3300 | 3300 | 3300 | 3300 |
| | | 56/F 56 樓 | 3000, 3200, 3300, 3400, 3600 | 3000, 3200, 3300, 3400, 3600 | 3300 | 3300 | 3300 | 3300 | 3300 | 3300 | 3300 | 3300 |
| 47/F-53/F and 55/F 47 樓至 53 樓及 55 樓 | | 150 | 150 | 150 | 150 | 150 | 150 | 150 | 150 | 150 | 150 | 150 |
| 56/F 56 樓 | | 150 | 150 | 150 | 150 | 150 | 150 | 150 | 150 | 150 | 150 | 150 |
| Thickness of Floor Slab (excluding plaster) (mm) 樓板 (不包括灰泥) 的厚度 (毫米) | | | | | | | | | | | | |

The internal areas of the residential properties on the upper floors will generally be slightly larger than those on the lower floors because of the reducing thickness of the structural walls on the upper floors. (This does not apply to the residential properties in the Phase because the design of the Phase is such that the reducing thickness of the structural walls of residential properties on the upper floors does not increase the internal areas of those residential properties.)
因住宅物業的較高樓層的結構牆的厚度遞減，較高樓層的內部面積，一般比較低樓層的內部面積稍大。(不適用於期數內的住宅物業，因為期數的設計是較高樓層的住宅物業的結構牆的厚度遞減不會增加該等住宅物業內部面積。)

Note 1: Please refer to page AL01 - page AL02 of this sales brochure for remarks, legend of terms and abbreviations shown on this floor plan.
備註 1: 有關樓面平面圖中顯示之附註、名詞及簡稱請參閱本售樓說明書第 AL01 頁 - AL02 頁。

Note 2: The dimensions of floor plans are all structural dimensions in millimeter.
備註 2: 樓面平面圖之尺規所列之數字為以毫米標示之建築結構尺寸。

Note 3: Dotted line in the format shown below delineates the extent of open kitchen area (if any) in a residential unit.

 Extent of open kitchen area

備註 3: 以下格式之虛線勾劃代表住宅單位內的開放式廚房範圍(如有)。

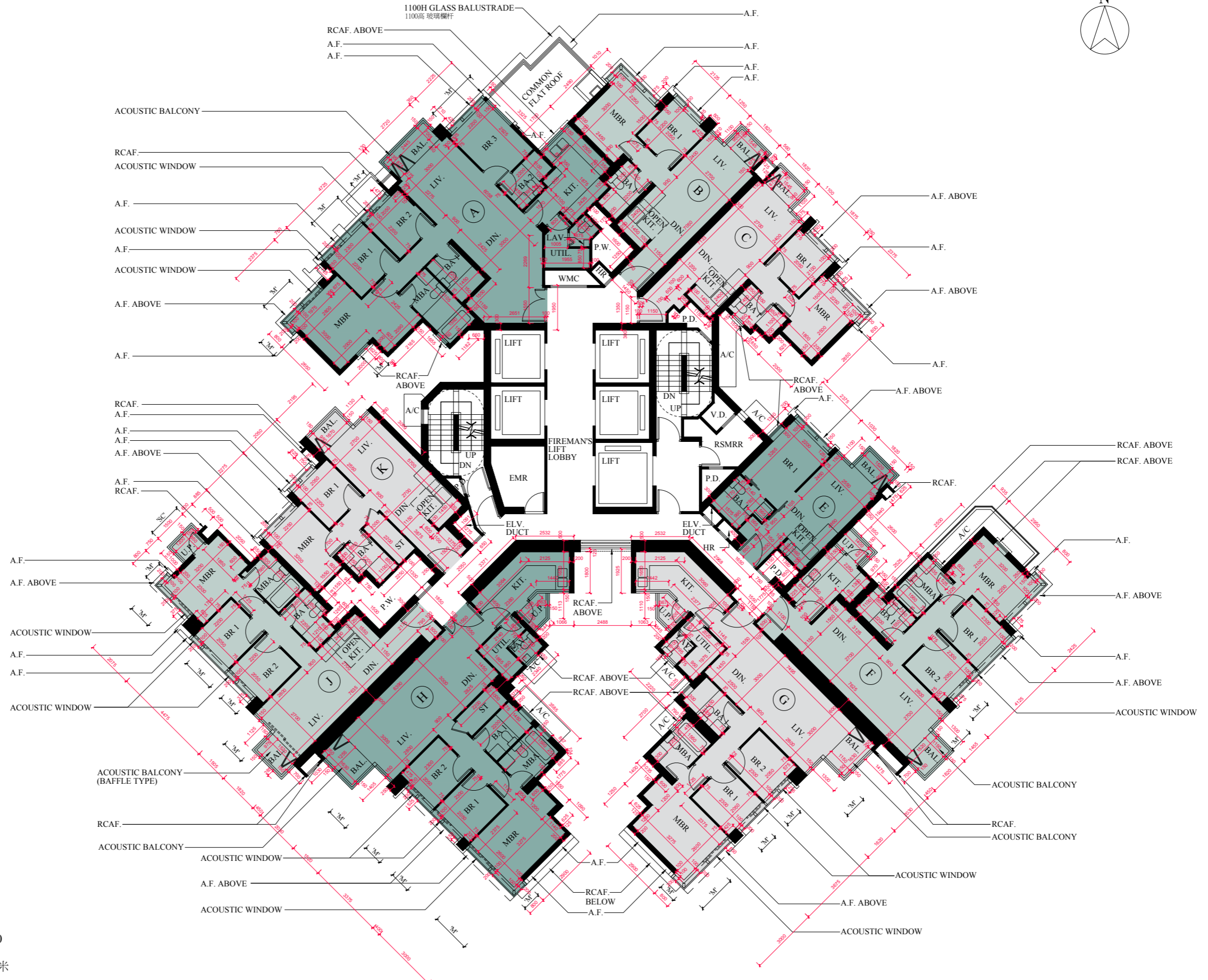
 開放式廚房範圍

FLOOR PLANS OF RESIDENTIAL PROPERTIES IN THE PHASE

期數的住宅物業的樓面平面圖

Tower 6 57/F Floor Plan

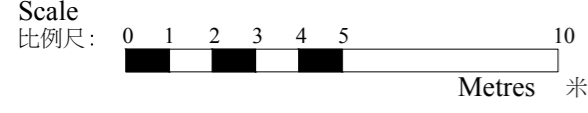
第 6 座 57樓樓面平面圖



Fixed Glazing / Fixed Glazing with Maintenance Window (forming part of the Noise Mitigation Measures)

Remark: Under the Principal Deed of Mutual Covenant and Management Agreement and the Sub-Deed of Mutual Covenant and Management Agreement, the Fixed Glazing/ Fixed Glazing with Maintenance Window (forming part of the Noise Mitigation Measures) should be unlocked only for the purpose of cleaning or maintenance.
 隔音玻璃 / 隔音玻璃連維修窗戶(構成噪音緩解措施的一部分)

附註：根據主公共契約及管理協議和副公共契約及管理協議，隔音玻璃 / 隔音玻璃連維修窗戶(構成噪音緩解措施的一部分)只為清潔或維修目的而解鎖。



FLOOR PLANS OF RESIDENTIAL PROPERTIES IN THE PHASE

期數的住宅物業的樓面平面圖

Tower 6 第 6 座

| Each Residential Property 每個住宅物業 | Tower Number 座數 | Flat 單位 | A | B | C | E | F | G | H | J | K |
|--|-----------------------|--------------|---------------------|---------------------|---------------------|------------|------------|---------------------|---------------------|---------------------|---------------------|
| | | Floor 樓層 | | | | | | | | | |
| Floor-to-Floor Height (mm) 層與層之間的高度 (毫米) | Tower 6 第 6 座 | 57/F 57 樓 | 3300, 3400, 3600 | 3300, 3400, 3600 | 3300, 3400, 3600 | 3300, 3600 | 3300, 3600 | 3300, 3400, 3600 | 3300, 3400, 3600 | 3300, 3400, 3600 | 3300, 3400, 3600 |
| Thickness of Floor Slab (excluding plaster) (mm) 樓板 (不包括灰泥) 的厚度 (毫米) | | 57/F 57 樓 | 150 | 150 | 150 | 150 | 150 | 150 | 150 | 150 | 150 |

The internal areas of the residential properties on the upper floors will generally be slightly larger than those on the lower floors because of the reducing thickness of the structural walls on the upper floors. (This does not apply to the residential properties in the Phase because the design of the Phase is such that the reducing thickness of the structural walls of residential properties on the upper floors does not increase the internal areas of those residential properties.)
因住宅物業的較高樓層的結構牆的厚度遞減，較高樓層的內部面積，一般比較低樓層的內部面積稍大。(不適用於期數內的住宅物業，因為期數的設計是較高樓層的住宅物業的結構牆的厚度遞減不會增加該等住宅物業內部面積。)

Note 1: Please refer to page AL01 - page AL02 of this sales brochure for remarks, legend of terms and abbreviations shown on this floor plan.
備註 1: 有關樓面平面圖中顯示之附註、名詞及簡稱請參閱本售樓說明書第 AL01 頁 - AL02 頁。

Note 2: The dimensions of floor plans are all structural dimensions in millimeter.
備註 2: 樓面平面圖之尺規所列之數字為以毫米標示之建築結構尺寸。

Note 3: Dotted line in the format shown below delineates the extent of open kitchen area (if any) in a residential unit.

□ — □ Extent of open kitchen area

備註 3: 以下格式之虛線勾劃代表住宅單位內的開放式廚房範圍(如有)。

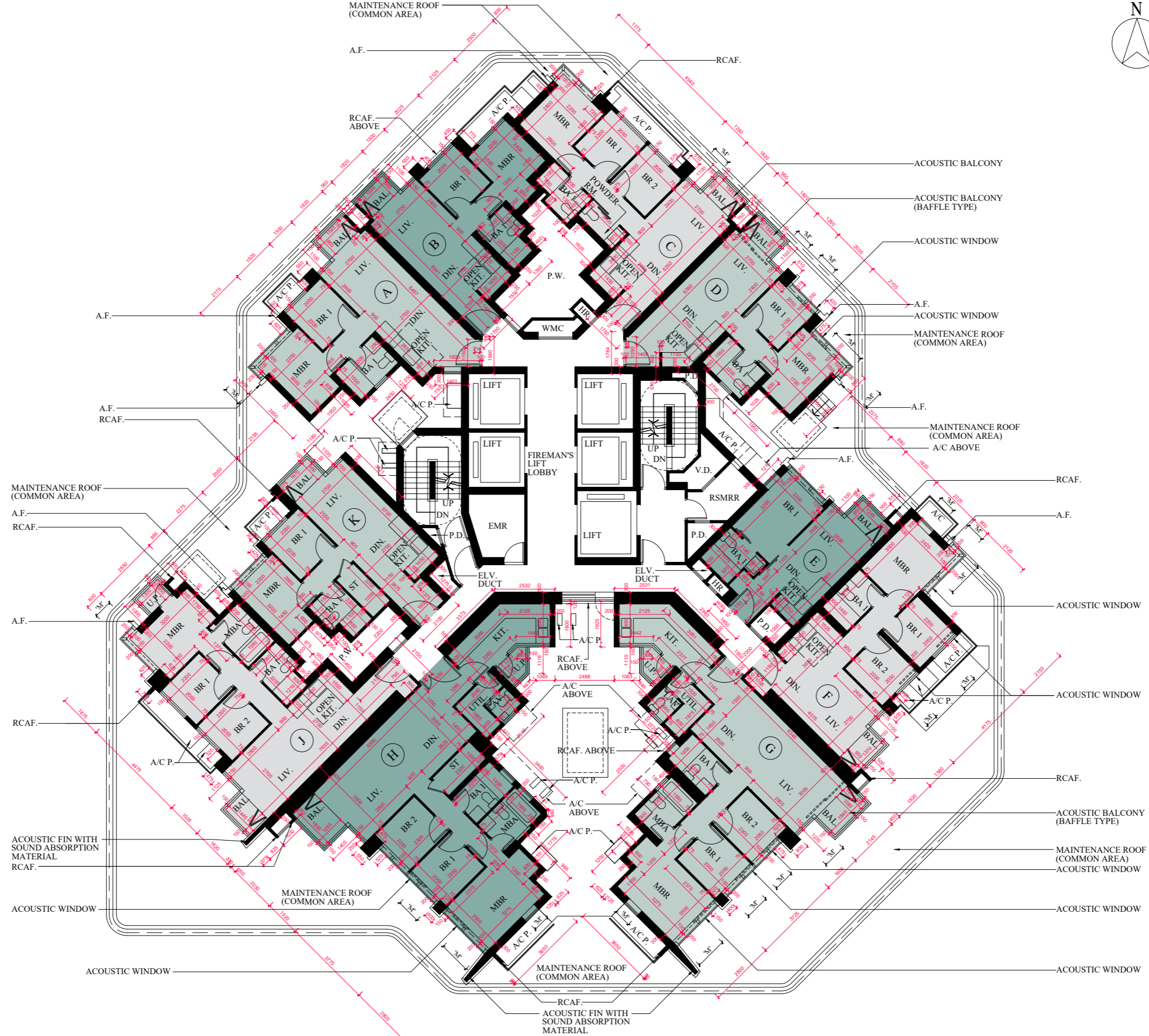
□ — □ 開放式廚房範圍

FLOOR PLANS OF RESIDENTIAL PROPERTIES IN THE PHASE

期數的住宅物業的樓面平面圖

Tower 8 3/F Floor Plan

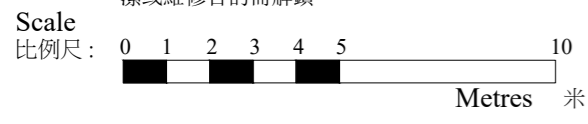
第 8 座 3 樓樓面平面圖



Fixed Glazing / Fixed Glazing with Maintenance Window (forming part of the Noise Mitigation Measures)

Remark: Under the Principal Deed of Mutual Covenant and Management Agreement and the Sub-Deed of Mutual Covenant and Management Agreement, the Fixed Glazing/ Fixed Glazing with Maintenance Window (forming part of the Noise Mitigation Measures) should be unlocked only for the purpose of cleaning or maintenance.
 隔音玻璃 / 隔音玻璃連維修窗戶(構成噪音緩解措施的一部分)

附註：根據主公共契約及管理協議和副公共契約及管理協議，隔音玻璃 / 隔音玻璃連維修窗戶(構成噪音緩解措施的一部分)只為清潔或維修目的而解鎖。



FLOOR PLANS OF RESIDENTIAL PROPERTIES IN THE PHASE

期數的住宅物業的樓面平面圖

Tower 8 第 8 座

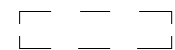
| Each Residential Property 每個住宅物業 | Tower Number 座數 | Flat 單位 | A | B | C | D | E | F | G | H | J | K |
|--|-------------------------|------------|------|------|------|------|------|------|------|------|------|------|
| | | Floor 樓層 | | | | | | | | | | |
| Floor-to-Floor Height (mm) 層與層之間的高度 (毫米) | Tower 8 第 8 座 | 3/F 3 樓 | 3000 | 3000 | 3000 | 3000 | 3000 | 3000 | 3000 | 3000 | 3000 | 3000 |
| Thickness of Floor Slab (excluding plaster) (mm) 樓板 (不包括灰泥) 的厚度 (毫米) | | 3/F 3 樓 | 150 | 150 | 150 | 150 | 150 | 150 | 150 | 150 | 150 | 150 |

The internal areas of the residential properties on the upper floors will generally be slightly larger than those on the lower floors because of the reducing thickness of the structural walls on the upper floors. (This does not apply to the residential properties in the Phase because the design of the Phase is such that the reducing thickness of the structural walls of residential properties on the upper floors does not increase the internal areas of those residential properties.)
因住宅物業的較高樓層的結構牆的厚度遞減，較高樓層的內部面積，一般比較低樓層的內部面積稍大。(不適用於期數內的住宅物業，因為期數的設計是較高樓層的住宅物業的結構牆的厚度遞減不會增加該等住宅物業內部面積。)

Note 1: Please refer to page AL01 - page AL02 of this sales brochure for remarks, legend of terms and abbreviations shown on this floor plan.
備註 1: 有關樓面平面圖中顯示之附註、名詞及簡稱請參閱本售樓說明書第 AL01 頁 - AL02 頁。

Note 2: The dimensions of floor plans are all structural dimensions in millimeter.
備註 2: 樓面平面圖之尺規所列之數字為以毫米標示之建築結構尺寸。

Note 3: Dotted line in the format shown below delineates the extent of open kitchen area (if any) in a residential unit.

 Extent of open kitchen area

備註 3: 以下格式之虛線勾劃代表住宅單位內的開放式廚房範圍(如有)。

 開放式廚房範圍

FLOOR PLANS OF RESIDENTIAL PROPERTIES IN THE PHASE

期數的住宅物業的樓面平面圖

Tower 8 第 8 座


| Each Residential Property 每個住宅物業 | Tower Number 座數 | Flat 單位 | A | B | C | D | E | F | G | H | J | K | |
|--|-------------------------|---|---------------------|---------------------|---------------------|---------------------|------------|---------------------|---------------------|---------------------|---------------------|---------------------|-----|
| | | Floor 樓層 | | | | | | | | | | | |
| Floor-to-Floor Height (mm) 層與層之間的高度 (毫米) | Tower 8 第 8 座 | 5/F-12/F, 15/F-23/F and 25/F-27/F 5 樓至 12 樓、15 樓至 23 樓及 25 樓至 27 樓 | 3000 | 3000 | 3000 | 3000 | 3000 | 3000 | 3000 | 3000 | 3000 | 3000 | |
| | | 28/F 28 樓 | 3000, 3100, 3300 | 3000, 3100, 3300 | 3000, 3100, 3300 | 3000, 3100, 3300 | 3000, 3300 | 3000, 3100, 3300 | 3000, 3100, 3300 | 3000, 3100, 3300 | 3000, 3100, 3300 | 3000, 3100, 3300 | |
| Thickness of Floor Slab (excluding plaster) (mm) 樓板 (不包括灰泥) 的厚度 (毫米) | | 5/F-12/F, 15/F-23/F and 25/F-27/F 5 樓至 12 樓、15 樓至 23 樓及 25 樓至 27 樓 | 150 | 150 | 150 | 150 | 150 | 150 | 150 | 150 | 150 | 150 | 150 |
| | | 28/F 28 樓 | 150 | 150 | 150 | 150 | 150 | 150 | 150 | 150 | 150 | 150 | 150 |

The internal areas of the residential properties on the upper floors will generally be slightly larger than those on the lower floors because of the reducing thickness of the structural walls on the upper floors. (This does not apply to the residential properties in the Phase because the design of the Phase is such that the reducing thickness of the structural walls of residential properties on the upper floors does not increase the internal areas of those residential properties.)
因住宅物業的較高樓層的結構牆的厚度遞減，較高樓層的內部面積，一般比較低樓層的內部面積稍大。(不適用於期數內的住宅物業，因為期數的設計是較高樓層的住宅物業的結構牆的厚度遞減不會增加該等住宅物業內部面積。)

Note 1: Please refer to page AL01 - page AL02 of this sales brochure for remarks, legend of terms and abbreviations shown on this floor plan.
備註 1: 有關樓面平面圖中顯示之附註、名詞及簡稱請參閱本售樓說明書第 AL01 頁 - AL02 頁。

Note 2: The dimensions of floor plans are all structural dimensions in millimeter.
備註 2: 樓面平面圖之尺規所列之數字為以毫米標示之建築結構尺寸。

Note 3: Dotted line in the format shown below delineates the extent of open kitchen area (if any) in a residential unit.

 Extent of open kitchen area

備註 3: 以下格式之虛線勾劃代表住宅單位內的開放式廚房範圍(如有)。

 開放式廚房範圍

FLOOR PLANS OF RESIDENTIAL PROPERTIES IN THE PHASE

期數的住宅物業的樓面平面圖

Tower 8 第 8 座

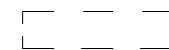
| Each Residential Property 每個住宅物業 | Tower Number 座數 | Flat 單位 | A | B | C | D | E | F | G | H | J | K |
|--|-------------------------|---|------|------|------|------|------|------|------|------|------|------|
| | | Floor 樓層 | | | | | | | | | | |
| Floor-to-Floor Height (mm) 層與層之間的高度 (毫米) | Tower 8 第 8 座 | 30/F-33/F, 35/F-43/F and 45/F-46/F 30 樓至 33 樓、35 樓至 43 樓及 45 樓至 46 樓 | 3000 | 3000 | 3000 | 3000 | 3000 | 3000 | 3000 | 3000 | 3000 | 3000 |
| Thickness of Floor Slab (excluding plaster) (mm) 樓板 (不包括灰泥) 的厚度 (毫米) | | 30/F-33/F, 35/F-43/F and 45/F-46/F 30 樓至 33 樓、35 樓至 43 樓及 45 樓至 46 樓 | 150 | 150 | 150 | 150 | 150 | 150 | 150 | 150 | 150 | 150 |

The internal areas of the residential properties on the upper floors will generally be slightly larger than those on the lower floors because of the reducing thickness of the structural walls on the upper floors. (This does not apply to the residential properties in the Phase because the design of the Phase is such that the reducing thickness of the structural walls of residential properties on the upper floors does not increase the internal areas of those residential properties.)
因住宅物業的較高樓層的結構牆的厚度遞減，較高樓層的內部面積，一般比較低樓層的內部面積稍大。(不適用於期數內的住宅物業，因為期數的設計是較高樓層的住宅物業的結構牆的厚度遞減不會增加該等住宅物業內部面積。)

Note 1: Please refer to page AL01 - page AL02 of this sales brochure for remarks, legend of terms and abbreviations shown on this floor plan.
備註 1: 有關樓面平面圖中顯示之附註、名詞及簡稱請參閱本售樓說明書第 AL01 頁 - AL02 頁。

Note 2: The dimensions of floor plans are all structural dimensions in millimeter.
備註 2: 樓面平面圖之尺規所列之數字為以毫米標示之建築結構尺寸。

Note 3: Dotted line in the format shown below delineates the extent of open kitchen area (if any) in a residential unit.

 Extent of open kitchen area

備註 3: 以下格式之虛線勾劃代表住宅單位內的開放式廚房範圍(如有)。

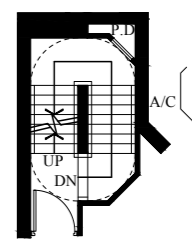
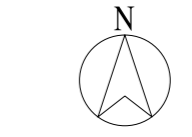
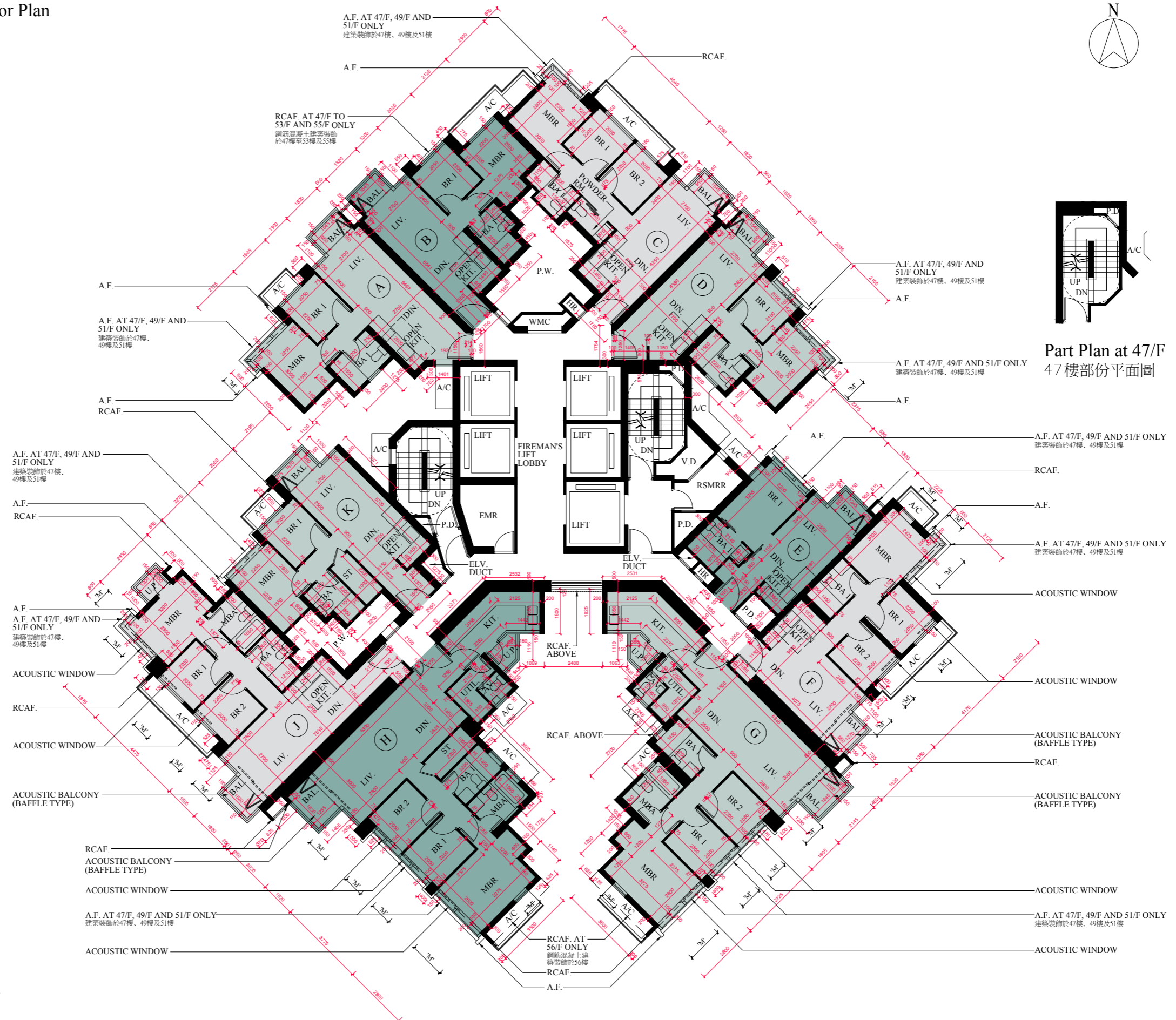
 開放式廚房範圍

FLOOR PLANS OF RESIDENTIAL PROPERTIES IN THE PHASE

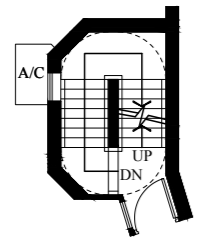
期數的住宅物業的樓面平面圖

Tower 8 47/F - 53/F and 55/F - 56/F Floor Plan

第 8 座 47樓至53樓及55樓至56樓樓面平面圖



Part Plan at 47/F
47樓部份平面圖



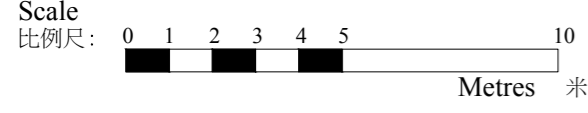
Part Plan at 47/F
47樓部份平面圖

Fixed Glazing / Fixed Glazing with Maintenance Window (forming part of the Noise Mitigation Measures)

Remark: Under the Principal Deed of Mutual Covenant and Management Agreement and the Sub-Deed of Mutual Covenant and Management Agreement, the Fixed Glazing/ Fixed Glazing with Maintenance Window (forming part of the Noise Mitigation Measures) should be unlocked only for the purpose of cleaning or maintenance.

隔音玻璃 / 隔音玻璃連維修窗戶(構成噪音緩解措施的一部分)

附註：根據主公共契約及管理協議和副公共契約及管理協議，隔音玻璃 / 隔音玻璃連維修窗戶(構成噪音緩解措施的一部分)只為清潔或維修目的而解鎖。



FLOOR PLANS OF RESIDENTIAL PROPERTIES IN THE PHASE

期數的住宅物業的樓面平面圖

Tower 8 第 8 座

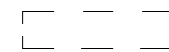
| Each Residential Property 每個住宅物業 | Tower Number 座數 | Flat 單位 | A | B | C | D | E | F | G | H | J | K |
|--|-------------------------|---|------|------|------|------|------|------|------|------|------|------|
| | | Floor 樓層 | | | | | | | | | | |
| Floor-to-Floor Height (mm) 層與層之間的高度 (毫米) | Tower 8 第 8 座 | 47/F-53/F and 55/F-56/F 47 樓至 53 樓及 55 樓至 56 樓 | 3300 | 3300 | 3300 | 3300 | 3300 | 3300 | 3300 | 3300 | 3300 | 3300 |
| Thickness of Floor Slab (excluding plaster) (mm) 樓板 (不包括灰泥) 的厚度 (毫米) | | 47/F-53/F and 55/F-56/F 47 樓至 53 樓及 55 樓至 56 樓 | 150 | 150 | 150 | 150 | 150 | 150 | 150 | 150 | 150 | 150 |

The internal areas of the residential properties on the upper floors will generally be slightly larger than those on the lower floors because of the reducing thickness of the structural walls on the upper floors. (This does not apply to the residential properties in the Phase because the design of the Phase is such that the reducing thickness of the structural walls of residential properties on the upper floors does not increase the internal areas of those residential properties.)
因住宅物業的較高樓層的結構牆的厚度遞減，較高樓層的內部面積，一般比較低樓層的內部面積稍大。(不適用於期數內的住宅物業，因為期數的設計是較高樓層的住宅物業的結構牆的厚度遞減不會增加該等住宅物業內部面積。)

Note 1: Please refer to page AL01 - page AL02 of this sales brochure for remarks, legend of terms and abbreviations shown on this floor plan.
備註 1: 有關樓面平面圖中顯示之附註、名詞及簡稱請參閱本售樓說明書第 AL01 頁 - AL02 頁。

Note 2: The dimensions of floor plans are all structural dimensions in millimeter.
備註 2: 樓面平面圖之尺規所列之數字為以毫米標示之建築結構尺寸。

Note 3: Dotted line in the format shown below delineates the extent of open kitchen area (if any) in a residential unit.

 Extent of open kitchen area

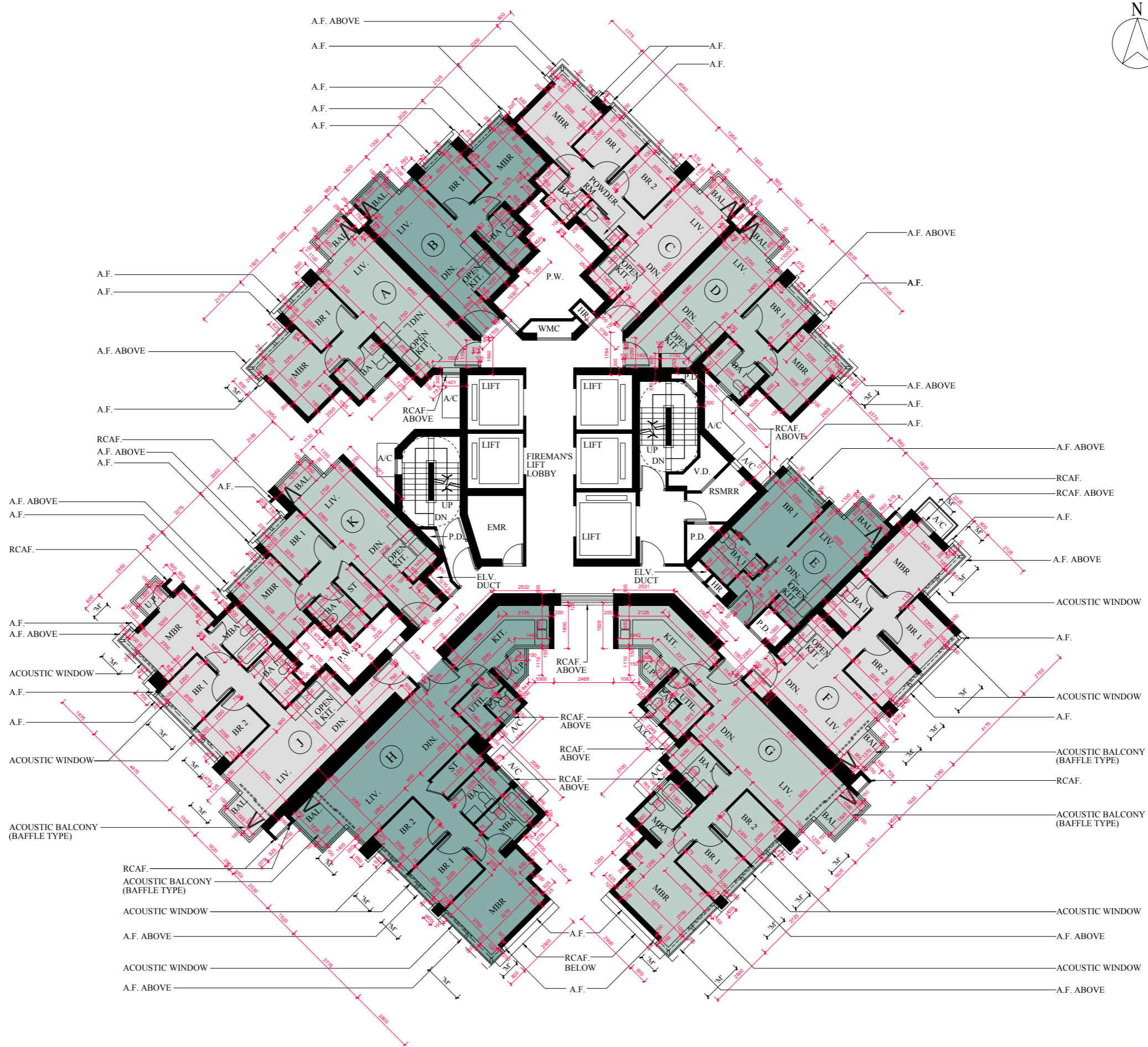
備註 3: 以下格式之虛線勾劃代表住宅單位內的開放式廚房範圍(如有)。

 開放式廚房範圍

FLOOR PLANS OF RESIDENTIAL PROPERTIES IN THE PHASE

期數的住宅物業的樓面平面圖

Tower 8 57/F Floor Plan
第 8 座 57樓樓面平面圖

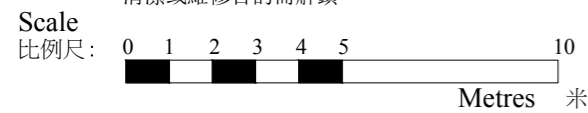


Fixed Glazing / Fixed Glazing with Maintenance Window (forming part of the Noise Mitigation Measures)

Remark: Under the Principal Deed of Mutual Covenant and Management Agreement and the Sub-Deed of Mutual Covenant and Management Agreement, the Fixed Glazing/ Fixed Glazing with Maintenance Window (forming part of the Noise Mitigation Measures) should be unlocked only for the purpose of cleaning or maintenance.

隔音玻璃 / 隔音玻璃連維修窗戶(構成噪音緩解措施的一部分)

附註：根據主公共契約及管理協議和副公共契約及管理協議，隔音玻璃 / 隔音玻璃連維修窗戶(構成噪音緩解措施的一部分)只為清潔或維修目的而解鎖。



FLOOR PLANS OF RESIDENTIAL PROPERTIES IN THE PHASE

期數的住宅物業的樓面平面圖

Tower 8 第 8 座

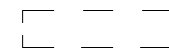
| Each Residential Property 每個住宅物業 | Tower Number 座數 | Flat 單位 | A | B | C | D | E | F | G | H | J | K |
|--|-------------------------|--------------|---------------------|---------------------|---------------------|---------------------|------------|---------------------|---------------------|---------------------|---------------------|---------------------|
| | | Floor 樓層 | | | | | | | | | | |
| Floor-to-Floor Height (mm) 層與層之間的高度 (毫米) | Tower 8 第 8 座 | 57/F 57 樓 | 3300, 3400, 3600 | 3300, 3400, 3600 | 3300, 3400, 3600 | 3300, 3400, 3600 | 3300, 3600 | 3300, 3400, 3600 | 3300, 3400, 3600 | 3300, 3400, 3600 | 3300, 3400, 3600 | 3300, 3400, 3600 |
| Thickness of Floor Slab (excluding plaster) (mm) 樓板 (不包括灰泥) 的厚度 (毫米) | | 57/F 57 樓 | 150 | 150 | 150 | 150 | 150 | 150 | 150 | 150 | 150 | 150 |

The internal areas of the residential properties on the upper floors will generally be slightly larger than those on the lower floors because of the reducing thickness of the structural walls on the upper floors. (This does not apply to the residential properties in the Phase because the design of the Phase is such that the reducing thickness of the structural walls of residential properties on the upper floors does not increase the internal areas of those residential properties.)
因住宅物業的較高樓層的結構牆的厚度遞減，較高樓層的内部面積，一般比較低樓層的内部面積稍大。(不適用於期數內的住宅物業，因為期數的設計是較高樓層的住宅物業的結構牆的厚度遞減不會增加該等住宅物業内部面積。)

Note 1: Please refer to page AL01 - page AL02 of this sales brochure for remarks, legend of terms and abbreviations shown on this floor plan.
備註 1: 有關樓面平面圖中顯示之附註、名詞及簡稱請參閱本售樓說明書第 AL01 頁 - AL02 頁。

Note 2: The dimensions of floor plans are all structural dimensions in millimeter.
備註 2: 樓面平面圖之尺規所列之數字為以毫米標示之建築結構尺寸。

Note 3: Dotted line in the format shown below delineates the extent of open kitchen area (if any) in a residential unit.

 Extent of open kitchen area

備註 3: 以下格式之虛線勾劃代表住宅單位內的開放式廚房範圍(如有)。

 開放式廚房範圍