

10 FLOOR PLANS OF RESIDENTIAL PROPERTIES IN THE DEVELOPMENT

發展項目的住宅物業的樓面平面圖

Legend of Terms and/or Abbreviations used on Floor Plans:

A/C PLATFORM
 ARCHITECTURAL FEATURE
 B.
 BAL.
 BALCONY ABOVE
 B.R.1
 B.R.2
 B.R.3
 COMMON AREA UNDER DMC
 DN.
 E.L.V.
 E.M.C.
 E.M.C. & ELV. DUCT
 FLAT A
 FLAT B
 F.R.
 GLASS BALUSTRADE
 H.R.
 H.R. AT H/L
 KIT.
 LAV.
 LIFT 1
 LIFT 2
 LIFT LOBBY
 LIFT MACHINE ROOM
 LIV./DIN.
 M.B.R.
 METAL GRILLE
 METAL RAILING
 PARAPET
 P.D.
 R.C. CURB
 R.C. PARAPET
 R.C. PLINTH
 ROOF
 UP
 U.R.
 W.M.C.
 VOID

= AIR CONDITIONER PLATFORM
 = ARCHITECTURAL FEATURE
 = BATHROOM
 = BALCONY
 = BALCONY ABOVE
 = BEDROOM 1
 = BEDROOM 2
 = BEDROOM 3
 = COMMON AREA UNDER DEED OF MUTUAL COVENANT
 = DOWN
 = EXTRA-LOW VOLTAGE
 = ELECTRIC METER CABINET
 = ELECTRIC METER CABINET & EXTRA-LOW VOLTAGE
 = FLAT A
 = FLAT B
 = FLAT ROOF
 = GLASS BALUSTRADE
 = HOSE REEL
 = HOSE REEL AT HIGH LEVEL
 = KITCHEN
 = LAVATORY
 = LIFT 1
 = LIFT 2
 = LIFT LOBBY
 = LIFT MACHINE ROOM
 = LIVING ROOM/DINING ROOM
 = MASTER BEDROOM
 = METAL GRILLE
 = METAL RAILING
 = PARAPET
 = PIPE DUCT
 = REINFORCED CONCRETE CURB
 = REINFORCED CONCRETE PARAPET
 = REINFORCED CONCRETE PLINTH
 = ROOF
 = UP
 = UTILITY ROOM
 = WATER METER CABINET
 = VOID

樓面平面圖中所使用名詞及/或簡稱之圖例：

= 冷氣機平台
 = 建築裝飾
 = 浴室
 = 露台
 = 上層露台覆蓋之部份
 = 睡房1
 = 睡房2
 = 睡房3
 = 根據公契為公用範圍
 = 落
 = 特低壓電線槽
 = 電錶櫃
 = 電錶櫃及特低壓電線槽
 = 單位A
 = 單位B
 = 平台
 = 玻璃圍欄
 = 消防喉轆
 = 位於高位的消防喉轆
 = 廚房
 = 洗手間
 = 升降機1
 = 升降機2
 = 升降機大堂
 = 升降機房
 = 客廳/飯廳
 = 主人睡房
 = 金屬格柵
 = 金屬圍欄
 = 護牆
 = 管道槽
 = 鋼筋混凝土邊
 = 鋼筋混凝土護牆
 = 鋼筋混凝土底座
 = 天台
 = 上
 = 工作間
 = 水錶櫃
 = 中空

10 FLOOR PLANS OF RESIDENTIAL PROPERTIES IN THE DEVELOPMENT

發展項目的住宅物業的樓面平面圖

Notes:

1. Symbols of fittings and fitments shown on the floor plans, such as bathtubs, sink, water closets, shower, sink counter, etc. are architectural symbols retrieved from the latest approved general building plans and are for general indication only.
2. There may be architectural features and exposed pipes/ductings on external walls of some of the floors.
3. There may be ceiling bulkheads and sunken slab of the above units at living room, dining room, bedrooms, utility room, kitchen, bathroom, lavatory and/or corridors of some residential units for the air-conditioning system and/or mechanical and electrical services.
4. The internal ceiling height within some units may vary due to structural, architectural and/or decoration design variations.
5. There may be communal pipes and/or mechanical and electrical services within the balcony, flat roof and roof of some residential units.
6. Balconies are non-enclosed areas.

附註:

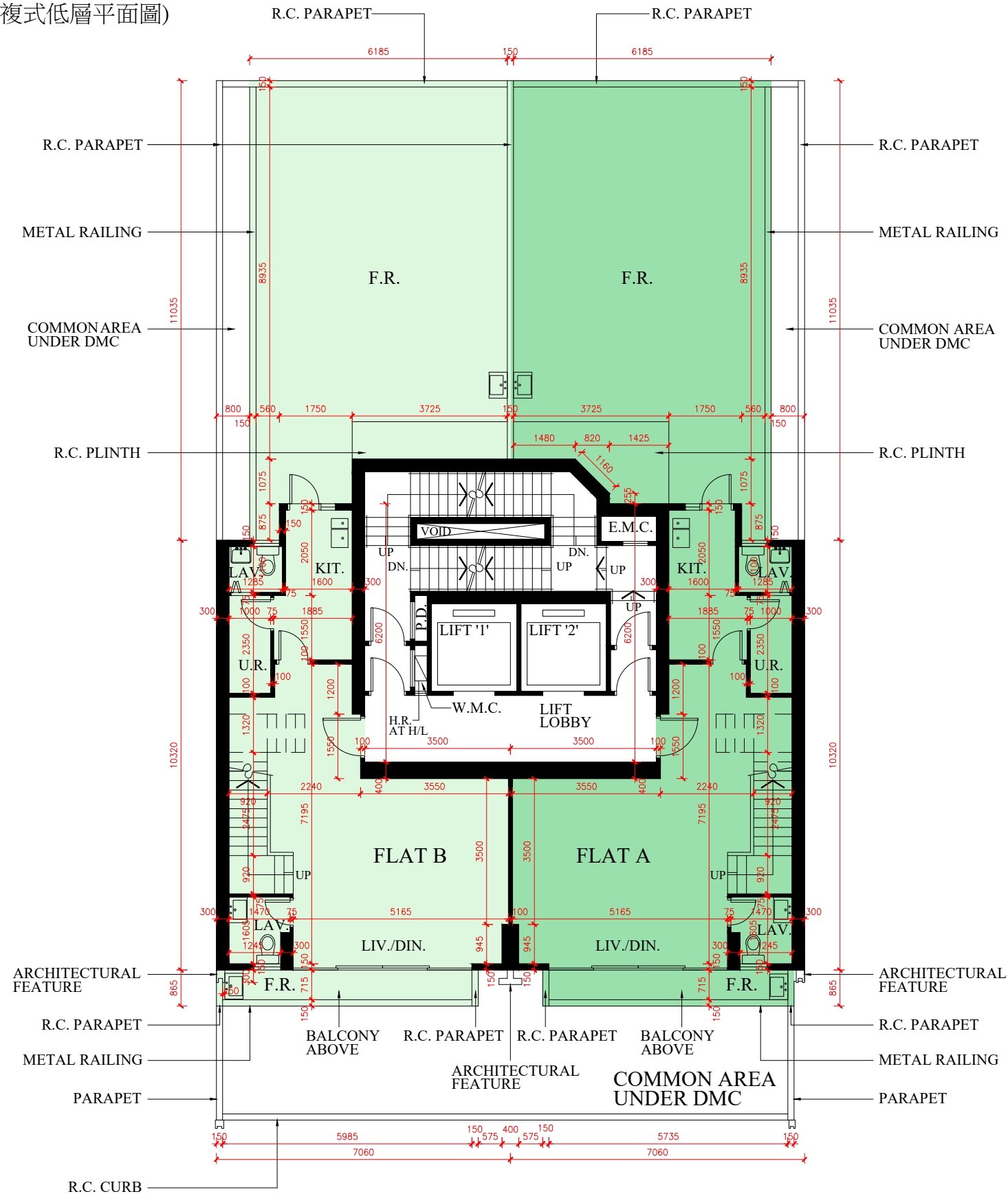
1. 樓面平面圖上所顯示的形象裝置符號，例如浴缸、洗滌盆、坐廁、花灑、洗滌盆櫃等乃摘自最新的經批准的建築圖則，只作一般性標誌。
2. 部份樓層外牆或設有建築裝飾及外露喉管/管道。
3. 部份住宅單位之客廳、飯廳、睡房、工作間、廚房、浴室、洗手間及/或走廊，或設有假天花及上層跌級樓板，內裝有冷氣系統及/或其他機電設備。
4. 部份單位之天花高度將會因應結構，建築設計及/或裝修設計上的需要而有差異。
5. 部份住宅單位之露台、平台及天台內或裝有公用喉管及/或其他機電設備。
6. 露台為不可封閉的地方。

10 FLOOR PLANS OF RESIDENTIAL PROPERTIES IN THE DEVELOPMENT

發展項目的住宅物業的樓面平面圖

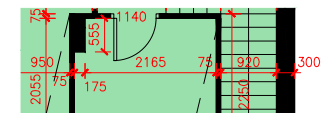
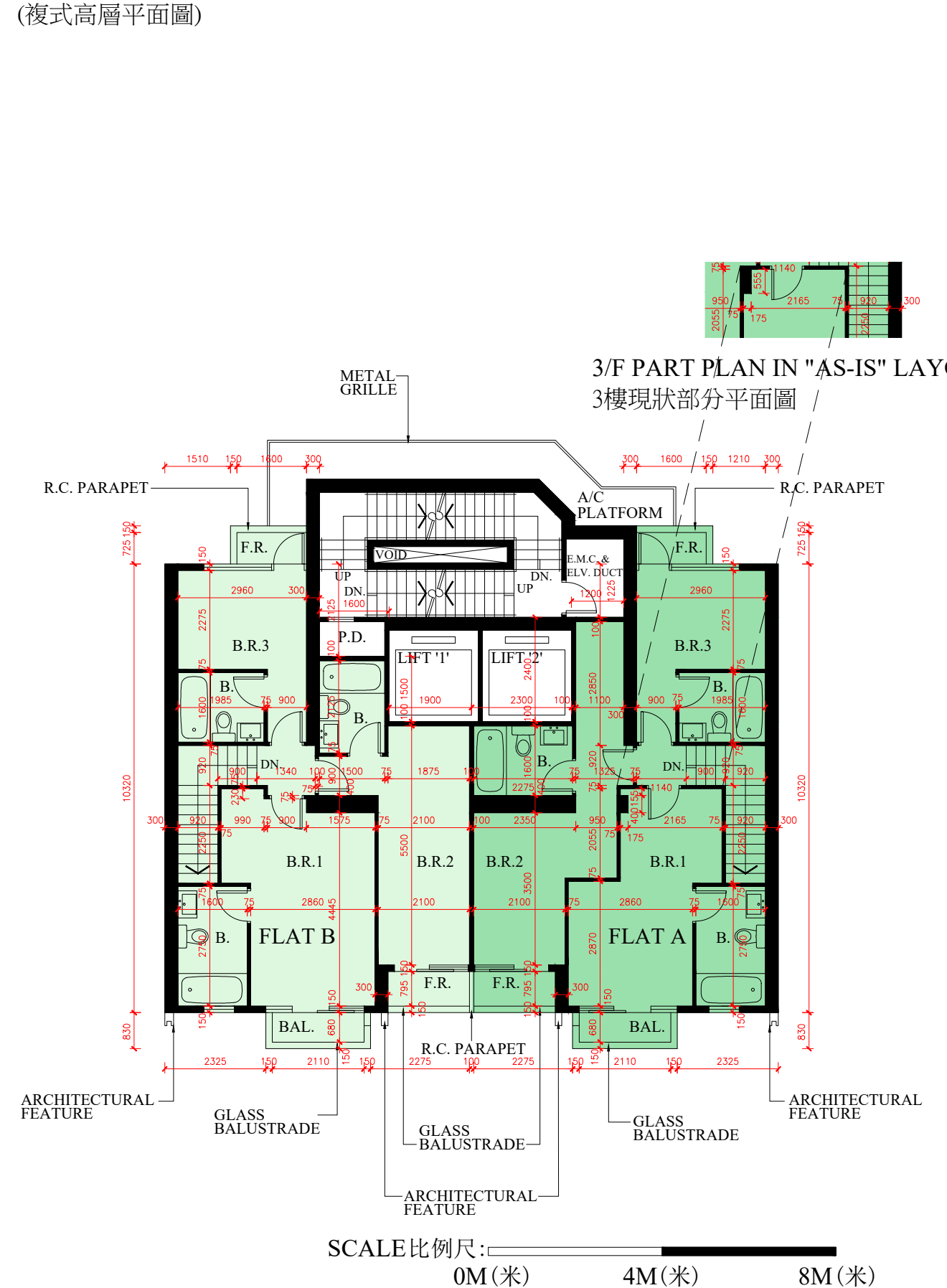
2/F FLOOR PLAN
(LOWER DUPLEX FLOOR PLAN)

2樓平面圖
(複式低層平面圖)



3/F FLOOR PLAN
(UPPER DUPLEX FLOOR PLAN)

3樓平面圖
(複式高層平面圖)



10 FLOOR PLANS OF RESIDENTIAL PROPERTIES IN THE DEVELOPMENT

發展項目的住宅物業的樓面平面圖

Floor 樓層	Flat 單位	The thickness of the floor slabs (excluding plaster) of each residential property (mm) 每個住宅物業的樓板(不包括灰泥)的厚度(毫米)	Floor-to-floor height of each residential property (mm) 每個住宅物業的層與層之間的高度(毫米)
2/F (LOWER DUPLEX) 2樓 (複式低層)	A	150, 200	3150, 3350, 3500
	B	150, 200	3150, 3350, 3500
3/F (UPPER DUPLEX) 3樓 (複式高層)	A	150	3150, 3200, 3300, 3500
	B	150, 400	3150, 3200, 3300, 3500

The internal areas of the residential properties on the upper floors will generally be slightly larger than those on the lower floors because of the reducing thickness of the structural walls on the upper floors.
因住宅物業的較高樓層的結構牆的厚度遞減，較高樓層的內部面積，一般比較低樓層的內部面積稍大。

Notes:

- The dimensions of floor plans are all structural dimensions in millimetre. There may be architectural features and exposed pipes/ ductings on external walls of some of the floors.
- Please refer to Page 24 to 25 of this sales brochure for remarks, legend of the terms and abbreviations shown in this floor plan.

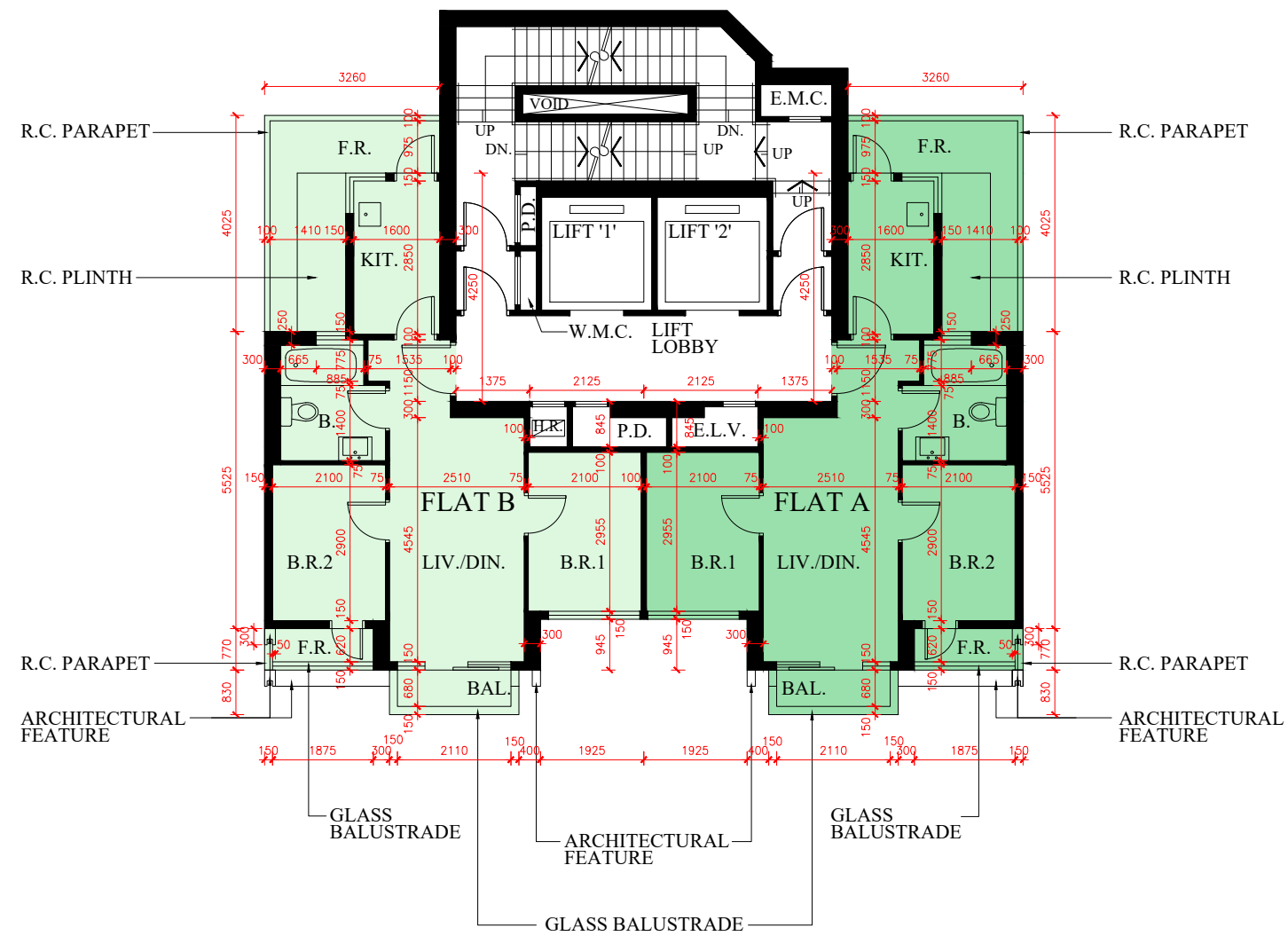
備註:

- 樓面平面圖之尺規所列數字為以毫米標示之結構尺規。部份樓層外牆或設有建築裝飾及外露喉管/管道。
- 樓面平面圖中顯示之附註，名詞及簡稱請參閱本售樓說明書第 24 頁至 25 頁。

10 FLOOR PLANS OF RESIDENTIAL PROPERTIES IN THE DEVELOPMENT

發展項目的住宅物業的樓面平面圖

5/F FLOOR PLAN
5樓平面圖



SCALE 比例尺: 0M(米) 4M(米) 8M(米)

10 FLOOR PLANS OF RESIDENTIAL PROPERTIES IN THE DEVELOPMENT

發展項目的住宅物業的樓面平面圖

Floor 樓層	Flat 單位	The thickness of the floor slabs (excluding plaster) of each residential property (mm) 每個住宅物業的樓板(不包括灰泥)的厚度(毫米)	Floor-to-floor height of each residential property (mm) 每個住宅物業的層與層之間的高度(毫米)
5/F 5樓	A	150	3150, 3500
	B	150	3150, 3500

The internal areas of the residential properties on the upper floors will generally be slightly larger than those on the lower floors because of the reducing thickness of the structural walls on the upper floors.
因住宅物業的較高樓層的結構牆的厚度遞減，較高樓層的內部面積，一般比較低樓層的內部面積稍大。

Notes:

- The dimensions of floor plans are all structural dimensions in millimetre. There may be architectural features and exposed pipes/ ductings on external walls of some of the floors.
- Please refer to Page 24 to 25 of this sales brochure for remarks, legend of the terms and abbreviations shown in this floor plan.

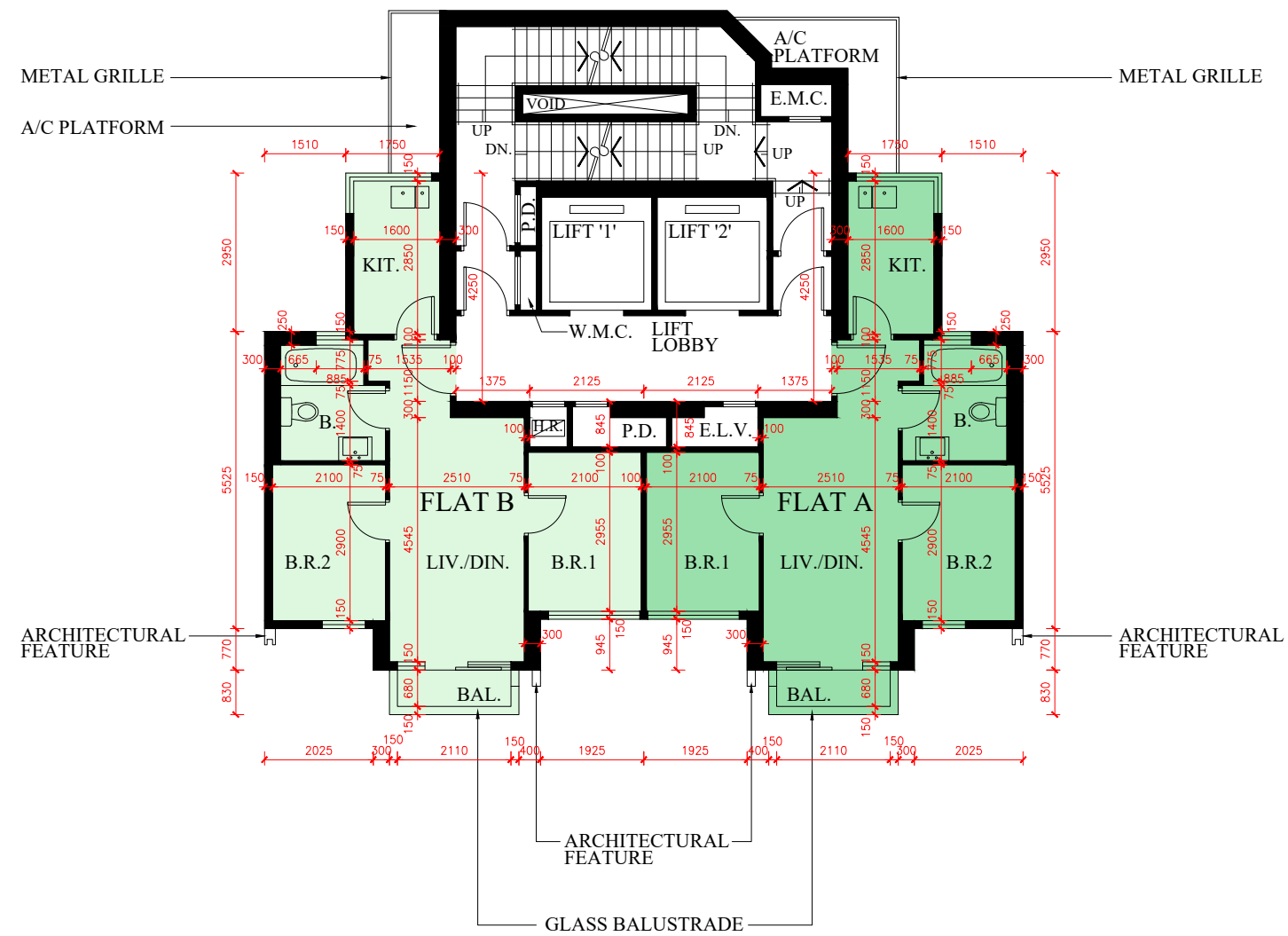
備註:

- 樓面平面圖之尺規所列數字為以毫米標示之結構尺規。部份樓層外牆或設有建築裝飾及外露喉管/管道。
- 樓面平面圖中顯示之附註，名詞及簡稱請參閱本售樓說明書第 24 頁至 25 頁。

10 FLOOR PLANS OF RESIDENTIAL PROPERTIES IN THE DEVELOPMENT

發展項目的住宅物業的樓面平面圖

6/F-12/F, 15/F-23/F & 25/F-26/F FLOOR PLAN
 6樓至12樓、15樓至23樓及25樓至26樓平面圖



SCALE 比例尺: 0M(米) 4M(米) 8M(米)

10 FLOOR PLANS OF RESIDENTIAL PROPERTIES IN THE DEVELOPMENT

發展項目的住宅物業的樓面平面圖

Floor 樓層	Flat 單位	The thickness of the floor slabs (excluding plaster) of each residential property (mm) 每個住宅物業的樓板(不包括灰泥)的厚度(毫米)	Floor-to-floor height of each residential property (mm) 每個住宅物業的層與層之間的高度(毫米)
6/F-12/F, 15/F-23/F & 25/F 6樓至12樓、15樓至23樓及25樓	A	150	3150, 3500
	B	150	3150, 3500
26/F 26樓	A	150, 165	3150, 3500
	B	150, 165	3150, 3500

The internal areas of the residential properties on the upper floors will generally be slightly larger than those on the lower floors because of the reducing thickness of the structural walls on the upper floors.
因住宅物業的較高樓層的結構牆的厚度遞減，較高樓層的內部面積，一般比較低樓層的內部面積稍大。

Notes:

- The dimensions of floor plans are all structural dimensions in millimetre. There may be architectural features and exposed pipes/ ductings on external walls of some of the floors.
- Please refer to Page 24 to 25 of this sales brochure for remarks, legend of the terms and abbreviations shown in this floor plan.

備註:

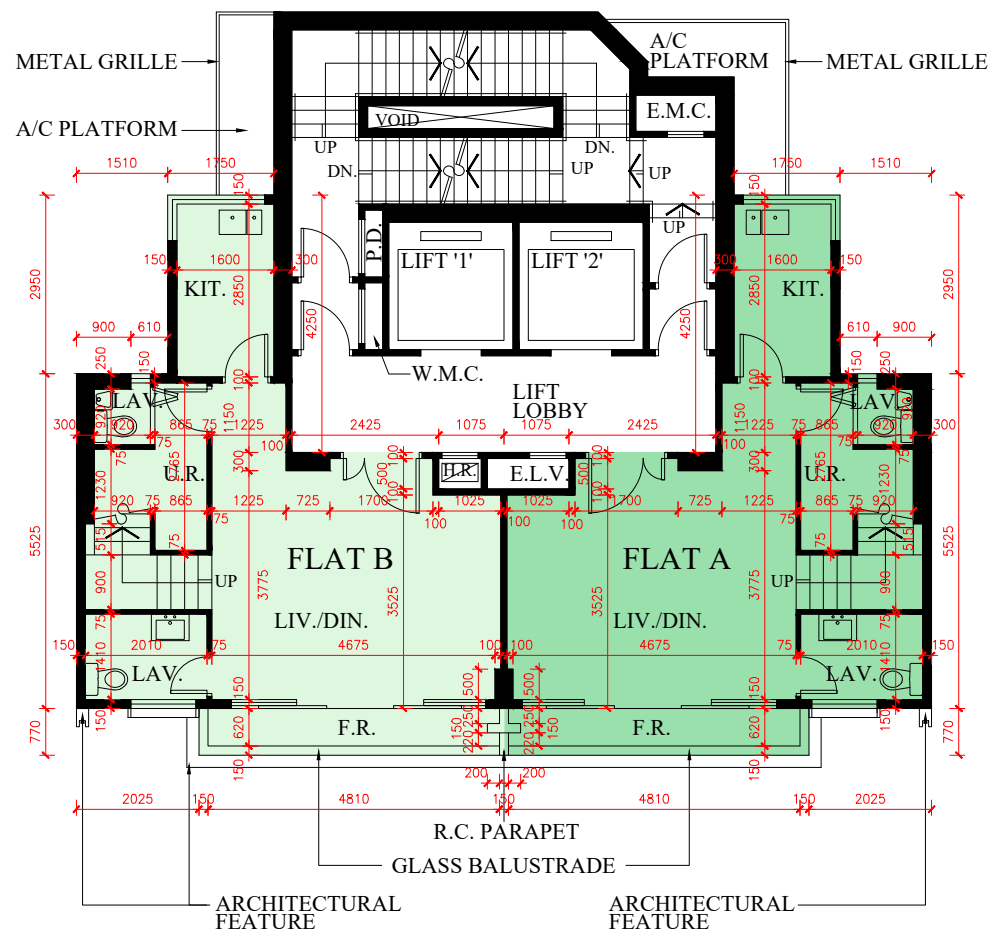
- 樓面平面圖之尺規所列數字為以毫米標示之結構尺規。部份樓層外牆或設有建築裝飾及外露喉管/管道。
- 樓面平面圖中顯示之附註，名詞及簡稱請參閱本售樓說明書第 24 頁至 25 頁。

10 FLOOR PLANS OF RESIDENTIAL PROPERTIES IN THE DEVELOPMENT

發展項目的住宅物業的樓面平面圖

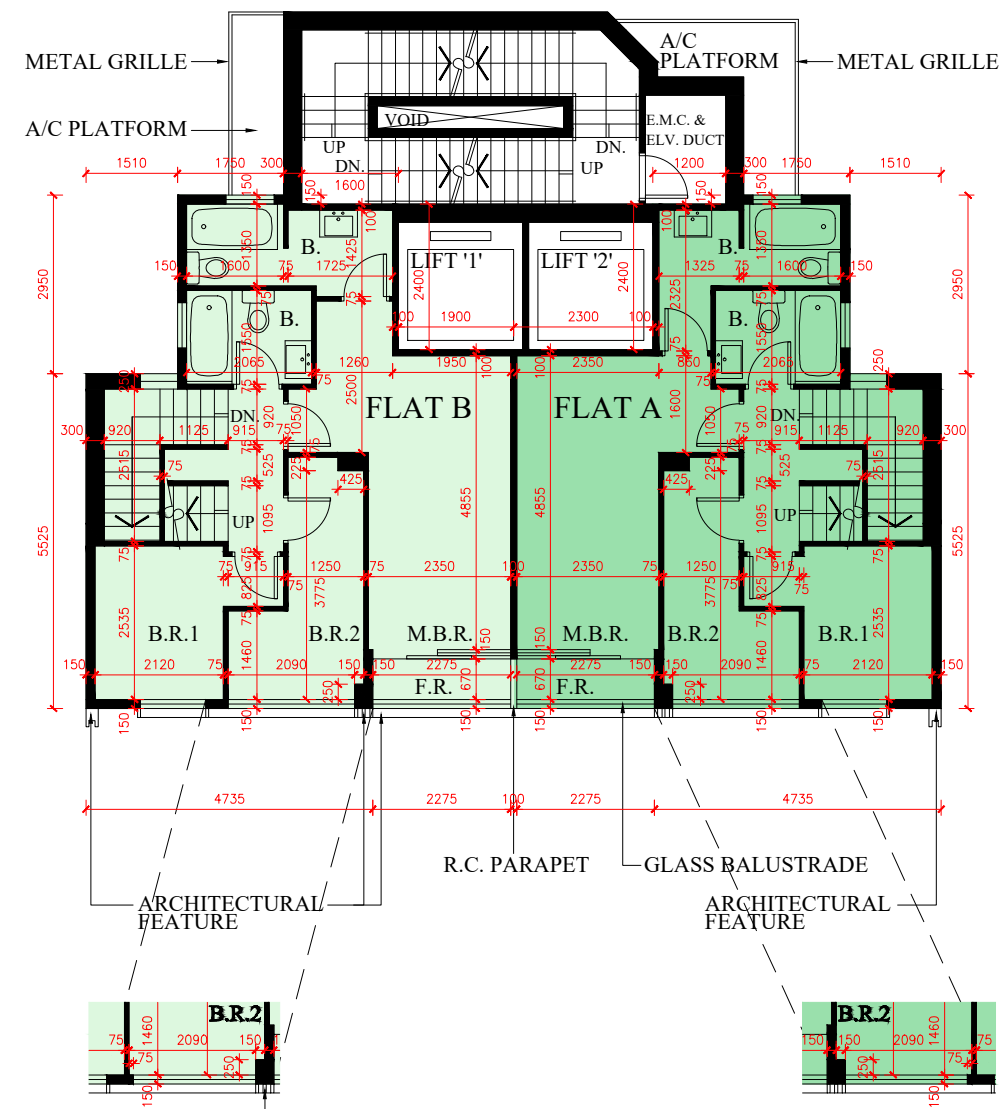
28/F FLOOR PLAN
(LOWER DUPLEX FLOOR PLAN)

28樓平面圖
(複式低層平面圖)



29/F FLOOR PLAN
(UPPER DUPLEX FLOOR PLAN)

29樓平面圖
(複式高層平面圖)



29/F PART PLAN IN "AS-IS" LAYOUT
29樓現狀部分平面圖

29/F PART PLAN IN "AS-IS" LAYOUT
29樓現狀部分平面圖

SCALE 比例尺: 0M(米) 4M(米) 8M(米)

10 FLOOR PLANS OF RESIDENTIAL PROPERTIES IN THE DEVELOPMENT

發展項目的住宅物業的樓面平面圖

Floor 樓層	Flat 單位	The thickness of the floor slabs (excluding plaster) of each residential property (mm) 每個住宅物業的樓板(不包括灰泥)的厚度(毫米)	Floor-to-floor height of each residential property (mm) 每個住宅物業的層與層之間的高度(毫米)
28/F (LOWER DUPLEX) 28樓(複式低層)	A	150	3150, 3350, 3500
	B	150	3150, 3350, 3500
29/F (UPPER DUPLEX) 29樓(複式高層)	A	150, 165	3500
	B	150, 165	3500

The internal areas of the residential properties on the upper floors will generally be slightly larger than those on the lower floors because of the reducing thickness of the structural walls on the upper floors.
因住宅物業的較高樓層的結構牆的厚度遞減，較高樓層的內部面積，一般比較低樓層的內部面積稍大。

Notes:

- The dimensions of floor plans are all structural dimensions in millimetre. There may be architectural features and exposed pipes/ ductings on external walls of some of the floors.
- Please refer to Page 24 to 25 of this sales brochure for remarks, legend of the terms and abbreviations shown in this floor plan.

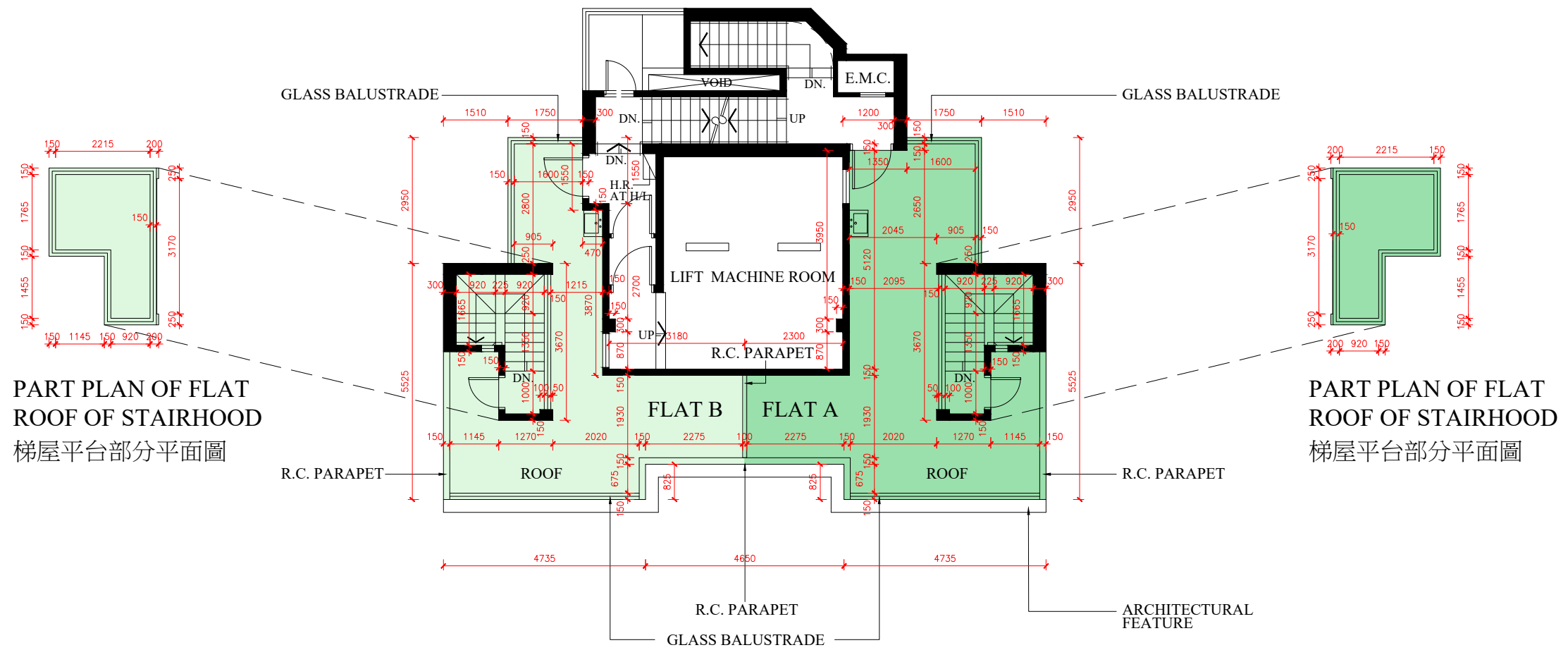
備註:

- 樓面平面圖之尺規所列數字為以毫米標示之結構尺規。部份樓層外牆或設有建築裝飾及外露喉管/管道。
- 樓面平面圖中顯示之附註，名詞及簡稱請參閱本售樓說明書第 24 頁至 25 頁。

10 FLOOR PLANS OF RESIDENTIAL PROPERTIES IN THE DEVELOPMENT

發展項目的住宅物業的樓面平面圖

ROOF PLAN
天台平面圖



SCALE 比例尺: 0M(米) 4M(米) 8M(米)

10 FLOOR PLANS OF RESIDENTIAL PROPERTIES IN THE DEVELOPMENT

發展項目的住宅物業的樓面平面圖

Floor 樓層	Flat 單位	The thickness of the floor slabs (excluding plaster) of each residential property (mm) 每個住宅物業的樓板(不包括灰泥)的厚度(毫米)	Floor-to-floor height of each residential property (mm) 每個住宅物業的層與層之間的高度(毫米)
ROOF 天台	A	Not Applicable 不適用	Not Applicable 不適用
	B	Not Applicable 不適用	Not Applicable 不適用

The internal areas of the residential properties on the upper floors will generally be slightly larger than those on the lower floors because of the reducing thickness of the structural walls on the upper floors.
因住宅物業的較高樓層的結構牆的厚度遞減，較高樓層的內部面積，一般比較低樓層的內部面積稍大。

Notes:

- The dimensions of floor plans are all structural dimensions in millimetre. There may be architectural features and exposed pipes/ ductings on external walls of some of the floors.
- Please refer to Page 24 to 25 of this sales brochure for remarks, legend of the terms and abbreviations shown in this floor plan.

備註:

- 樓面平面圖之尺規所列數字為以毫米標示之結構尺規。部份樓層外牆或設有建築裝飾及外露喉管/管道。
- 樓面平面圖中顯示之附註，名詞及簡稱請參閱本售樓說明書第 24 頁至 25 頁。