

10 發展項目的住宅物業的樓面平面圖 FLOOR PLANS OF RESIDENTIAL PROPERTIES IN THE DEVELOPMENT

在本頁上之備註和圖例適用於全部的「發展項目的住宅物業的樓面平面圖」的頁數。

The notes and legends on this page apply to all pages of "Floor plans of residential properties in the Development".

備註：

1. 部分住宅物業的露台、工作平台、空調機平台、平台、天台或外牆上/附近或設有外露之公用喉管，或外牆裝飾皮內藏之公用喉管。
2. 部分住宅物業內之部分天花或有跌級樓板，用以安裝上層之機電設備或配合上層之結構、建築設計及/或裝修設計上的需要。
3. 部分住宅物業內或設有假陣或假天花用以安裝空調喉管及/或其他機電設備。
4. 部分住宅單位的空調機之室外機放置於指定的空調機平台或平台。該等空調機之室外機可能發出熱力及/或聲音。
5. 各住宅物業的樓面平面圖內所展示之裝置及設備的圖標如洗面盆、座廁、淋浴間、洗滌盆、櫃(如有)等乃根據最新經批准的建築圖則擬備，其形狀、尺寸、比例或與實際提供的裝置及設備存在差異，僅供示意及參考之用。

Notes:

1. Common pipes that are exposed or enclosed in cladding may be located at or adjacent to the balcony, utility platform, air conditioning platform, flat roof, roof, or external wall of some residential properties.
2. There may be sunken slabs in some parts of the ceiling within some residential properties for the installation of mechanical and electrical services of the floor above, or due to the structural, architectural and/or decorative design requirements of the floor above.
3. There may be ceiling bulkheads or false ceilings inside some residential properties for the installation of air-conditioning conduits and/or other mechanical and electrical services.
4. The outdoor units of air-conditioners for some residential properties are placed on the designated air-conditioning platforms or flat roofs. These outdoor units of air-conditioners may generate heat and/or noise.
5. The icons of fittings and appliances shown on the floor plans of residential properties, such as wash basins, water closets, shower cubicles, sink units, cabinets (if any) etc. are prepared in accordance with the latest approved building plans. Their shapes, dimensions, scales may differ from the fittings and appliances actually provided, and they are for indication and reference only.

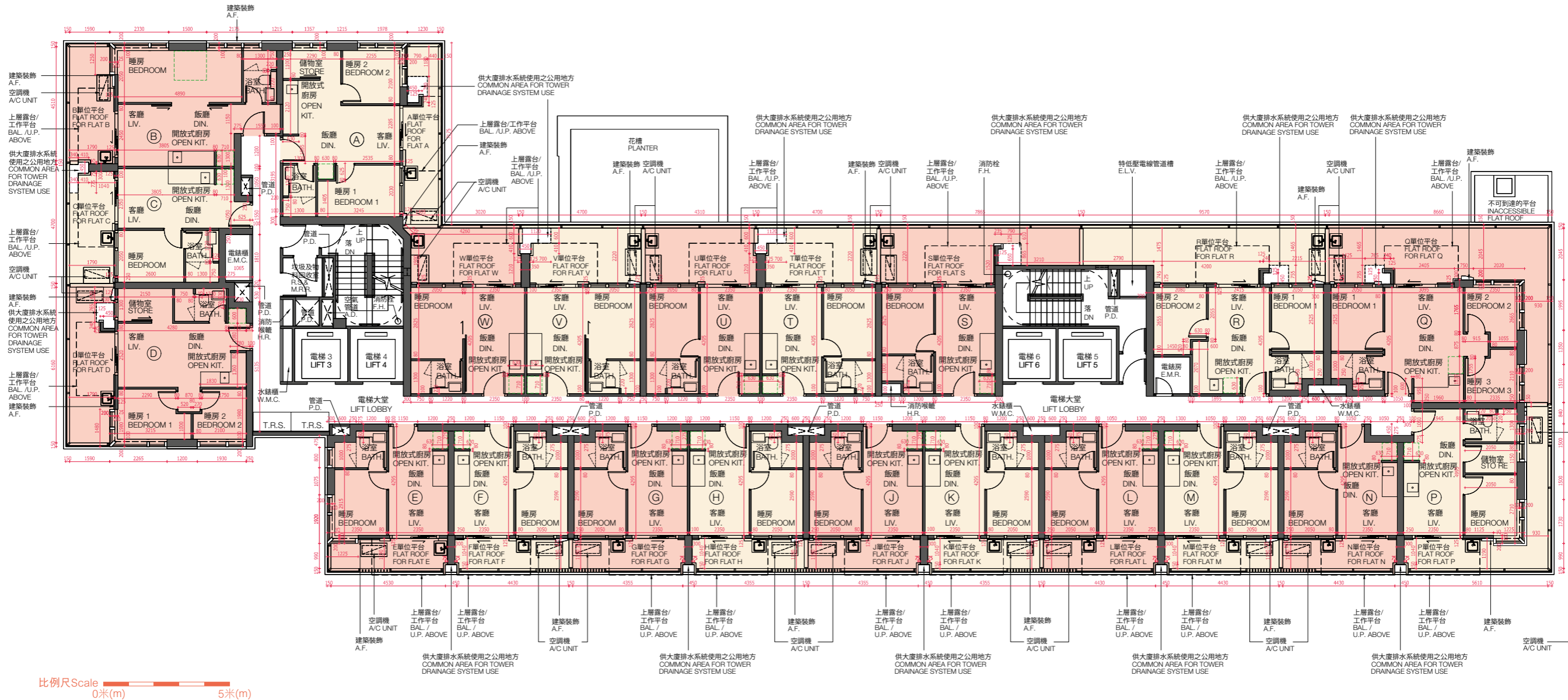
樓面平面圖之圖例

Legends of Floor Plans

A/C PLATFORM	= 空調機平台 Air Conditioning Platform
A/C UNIT	= 空調機 Air Conditioning Unit
A.D.	= 空氣管道 Air Duct
A.F.	= 建築裝飾 Architectural Feature
BAL./U.P.	= 露台/工作平台 Balcony/Utility Platform
BAL./U.P. ABOVE	= 上層露台/工作平台 Balcony/Utility Platform Above
BATH.	= 浴室 Bathroom
COVER OF BAL./U.P. BELOW	= 下層露台/工作平台頂蓋 Cover of Balcony/Utility Platform Below
DIN.	= 飯廳 Dining Room
DN	= 落 Down
E.L.V.	= 特低壓電線管道槽 Extra-low Voltage Duct
ELEC. DUCT	= 電線管道槽 Electrical Duct
E.M.C.	= 電錶櫃 Electrical Meter Cabinet
E.M.R.	= 電錶房 Electrical Meter Room
F.H.	= 消防栓 Fire Hydrant
H.R.	= 消防喉轆 Hose Reel
KIT.	= 廚房 Kitchen
LIV.	= 客廳 Living Room
OPEN KIT.	= 開放式廚房 Open Kitchen
P.D.	= 管道 Pipe Duct
R.S.& M.R.R.	= 垃圾及物料回收室 Refuse Storage and Material Recovery Room
STORE	= 儲物室 Store Room
T.R.S.	= 臨時庇護處 Temporary Refuge Space
W.M.C.	= 水錶櫃 Water Meter Cabinet
	= 隨樓附送之嵌入式裝置 Built-in fittings provided in the flats

10 發展項目的住宅物業的樓面平面圖 FLOOR PLANS OF RESIDENTIAL PROPERTIES IN THE DEVELOPMENT

5樓
5/F



備註：平面圖所列數字為以毫米標示之建築結構尺寸。
Note: The dimensions of the floor plans are all structural dimensions measured in millimeters.

10 發展項目的住宅物業的樓面平面圖 FLOOR PLANS OF RESIDENTIAL PROPERTIES IN THE DEVELOPMENT

每個住宅物業 Each Residential Property	樓層 Floor	單位 Flat																					
		A	B	C	D	E	F	G	H	J	K	L	M	N	P	Q	R	S	T	U	V	W	
樓板(不包括灰泥)的厚度(毫米) Thickness of Floor Slab (excluding plaster)(mm)	5樓 5/F	160, 200	160, 200	160, 200	160, 200	160	160	160	160	160	160	160	160	160	160	160, 200	160, 200	160, 200	160	160	160	160	160
層與層之間的高度(毫米) Floor-to-Floor Height (mm)		3050, 3325	2975, 3050, 3325	2975, 3050, 3325	2975, 3050, 3325	2975, 3050, 3325	2975, 3050, 3325	2975, 3050, 3325	2975, 3050, 3325	2975, 3050, 3325	2975, 3050, 3325	2975, 3050, 3325	2975, 3050, 3325	2975, 3050, 3325	2975, 3050, 3325	2975, 3050, 3325	2975, 3050, 3325	2975, 3050, 3325	2975, 3050, 3325	2975, 3050, 3325	2975, 3050, 3325	2975, 3050, 3325	2975, 3050, 3325

因住宅物業的較高樓層的結構牆的厚度遞減，較高樓層的內部面積，一般比較低樓層的內部面積稍大。

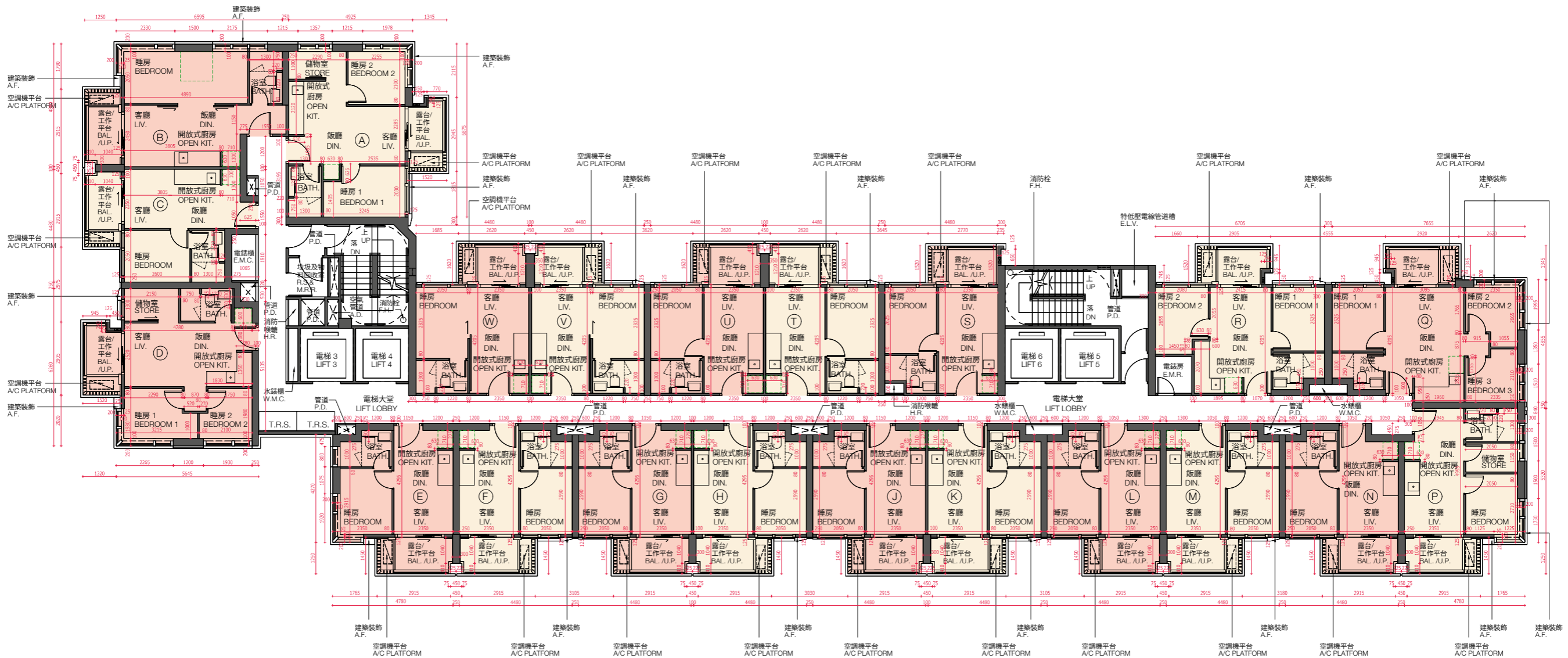
The internal areas of residential properties on the upper floors will generally be slightly larger than those on the lower floors because of the reducing thickness of the structural walls on the upper floors.

請參閱本售樓說明書第26頁為發展項目的住宅物業的樓面平面圖而設之備註和圖例。

Please refer to page 26 of this sales brochure for the notes and legends for the floor plans of residential properties in the Development.

10 發展項目的住宅物業的樓面平面圖 FLOOR PLANS OF RESIDENTIAL PROPERTIES IN THE DEVELOPMENT

6樓、8樓、9樓、11樓、12樓、16樓、17樓、19樓、20樓、22樓、23樓、26樓及27樓
6/F, 8/F, 9/F, 11/F, 12/F, 16/F, 17/F, 19/F, 20/F, 22/F, 23/F, 26/F and 27/F



比例尺 Scale 0米(m) 5米(m)

備註：平面圖所列數字為以毫米標示之建築結構尺寸。
Note: The dimensions of the floor plans are all structural dimensions measured in millimeters.

10 發展項目的住宅物業的樓面平面圖 FLOOR PLANS OF RESIDENTIAL PROPERTIES IN THE DEVELOPMENT

每個住宅物業 Each Residential Property	樓層 Floor	單位 Flat																				
		A	B	C	D	E	F	G	H	J	K	L	M	N	P	Q	R	S	T	U	V	W
樓板(不包括灰泥) 的厚度(毫米) Thickness of Floor Slab (excluding plaster)(mm)	6樓、8樓、9樓、 11樓、12樓、16樓、 17樓、19樓、20樓、 22樓、23樓及26樓	160, 200	160, 200	160, 200	160, 200	160	160	160	160	160	160	160	160	160	160	160, 200	160, 200	160, 200	160	160	160	160
層與層之間的高度 (毫米) Floor-to-Floor Height (mm)	6/F, 8/F, 9/F, 11/F, 12/F, 16/F, 17/F, 19/F, 20/F, 22/F, 23/F and 26/F	3050, 3325	2975, 3050, 3325	2975, 3050, 3325	2975, 3050, 3325	2975, 3050, 3325	2975, 3050, 3325	2975, 3050, 3325	2975, 3050, 3325	2975, 3050, 3325	2975, 3050, 3325	2975, 3050, 3325	2975, 3050, 3325	2975, 3050, 3325	2975, 3050, 3325	2975, 3050, 3325	2975, 3050, 3325	2975, 3050, 3325	2975, 3050, 3325	2975, 3050, 3325	2975, 3050, 3325	

每個住宅物業 Each Residential Property	樓層 Floor	單位 Flat																				
		A	B	C	D	E	F	G	H	J	K	L	M	N	P	Q	R	S	T	U	V	W
樓板(不包括灰泥) 的厚度(毫米) Thickness of Floor Slab (excluding plaster)(mm)	27樓 27/F	160, 200	160, 200	160, 200	160, 200	160	160	160	160	160	160	160	160	160	160	160, 200	160, 200, 400	160, 200, 400	160, 200, 400	160, 200, 400	160, 200, 400	160, 200, 400
層與層之間的高度 (毫米) Floor-to-Floor Height (mm)		3050, 3325	2975, 3050, 3325	2975, 3050, 3325	2975, 3050, 3325	2975, 3050, 3325	2975, 3050, 3325	2975, 3050, 3325	2975, 3050, 3325	2975, 3050, 3325	2975, 3050, 3325	2975, 3050, 3325	2975, 3050, 3325	2975, 3050, 3325	2975, 3050, 3325	2975, 3050, 3125, 3300, 3325	3050, 3125, 3300, 3325	2975, 3050, 3125, 3300, 3325	3050, 3125, 3300, 3325	3050, 3125, 3300, 3325	3050, 3125, 3300, 3325	2975, 3050, 3125, 3300, 3325

因住宅物業的較高樓層的結構牆的厚度遞減，較高樓層的內部面積，一般比較低樓層的內部面積稍大。

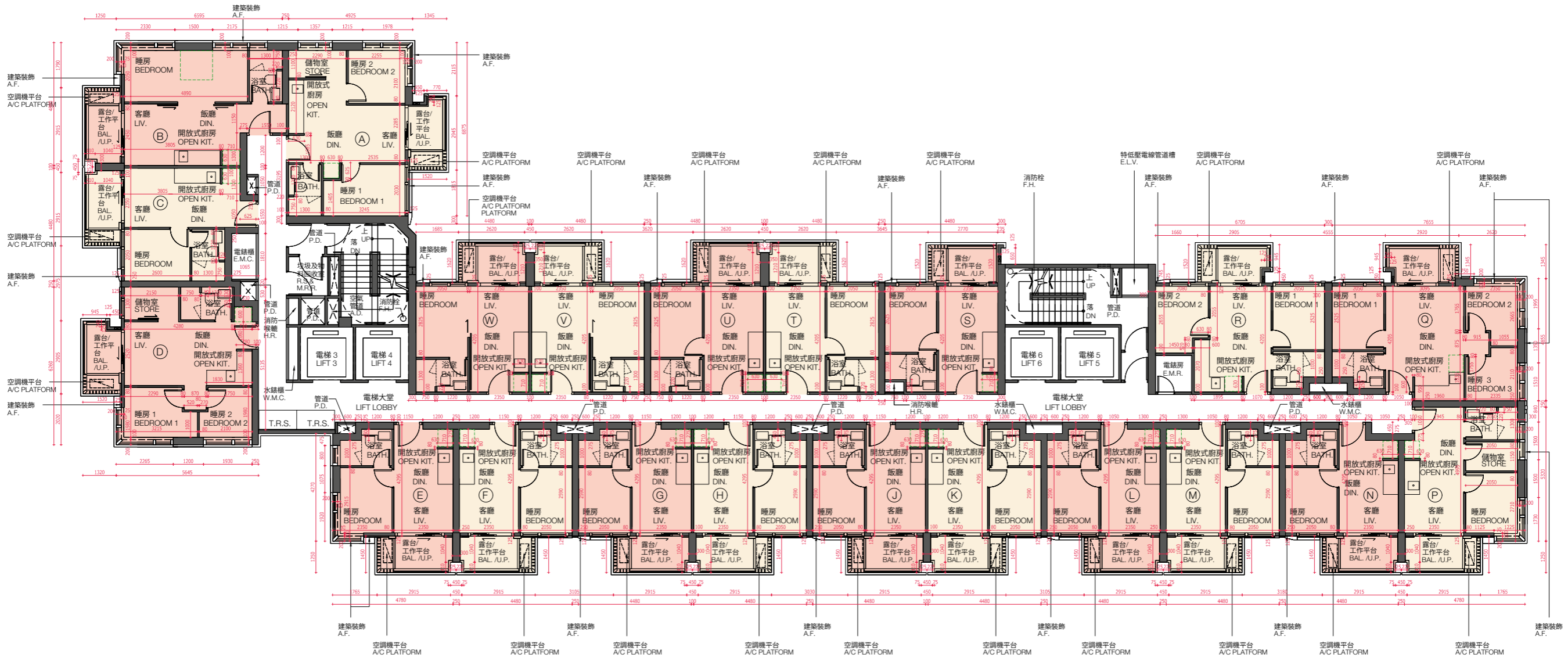
The internal areas of residential properties on the upper floors will generally be slightly larger than those on the lower floors because of the reducing thickness of the structural walls on the upper floors.

請參閱本售樓說明書第26頁為發展項目的住宅物業的樓面平面圖而設之備註和圖例。

Please refer to page 26 of this sales brochure for the notes and legends for the floor plans of residential properties in the Development.

10 發展項目的住宅物業的樓面平面圖 FLOOR PLANS OF RESIDENTIAL PROPERTIES IN THE DEVELOPMENT

7樓、10樓、15樓、18樓、21樓及25樓
7/F, 10/F, 15/F, 18/F, 21/F and 25/F



比例尺 Scale 0米(m) 5米(m)

備註：平面圖所列數字為以毫米標示之建築結構尺寸。
Note: The dimensions of the floor plans are all structural dimensions measured in millimeters.

10 發展項目的住宅物業的樓面平面圖 FLOOR PLANS OF RESIDENTIAL PROPERTIES IN THE DEVELOPMENT

每個住宅物業 Each Residential Property	樓層 Floor	單位 Flat																				
		A	B	C	D	E	F	G	H	J	K	L	M	N	P	Q	R	S	T	U	V	W
樓板(不包括灰泥) 的厚度(毫米) Thickness of Floor Slab (excluding plaster)(mm)	7樓、10樓、15樓、 18樓、21樓及25樓 7/F, 10/F, 15/F, 18/F, 21/F and 25/F	160, 200	160, 200	160, 200	160, 200	160	160	160	160	160	160	160	160	160	160	160, 200	160, 200	160, 200	160	160	160	160
層與層之間的高度 (毫米) Floor-to-Floor Height (mm)		3050, 3325	2975, 3050, 3325	2975, 3050, 3325	2975, 3050, 3325	2975, 3050, 3325	2975, 3050, 3325	2975, 3050, 3325	2975, 3050, 3325	2975, 3050, 3325	2975, 3050, 3325	2975, 3050, 3325	2975, 3050, 3325	2975, 3050, 3325	2975, 3050, 3325	2975, 3050, 3325	2975, 3050, 3325	2975, 3050, 3325	2975, 3050, 3325	2975, 3050, 3325	2975, 3050, 3325	2975, 3050, 3325

因住宅物業的較高樓層的結構牆的厚度遞減，較高樓層的內部面積，一般比較低樓層的內部面積稍大。

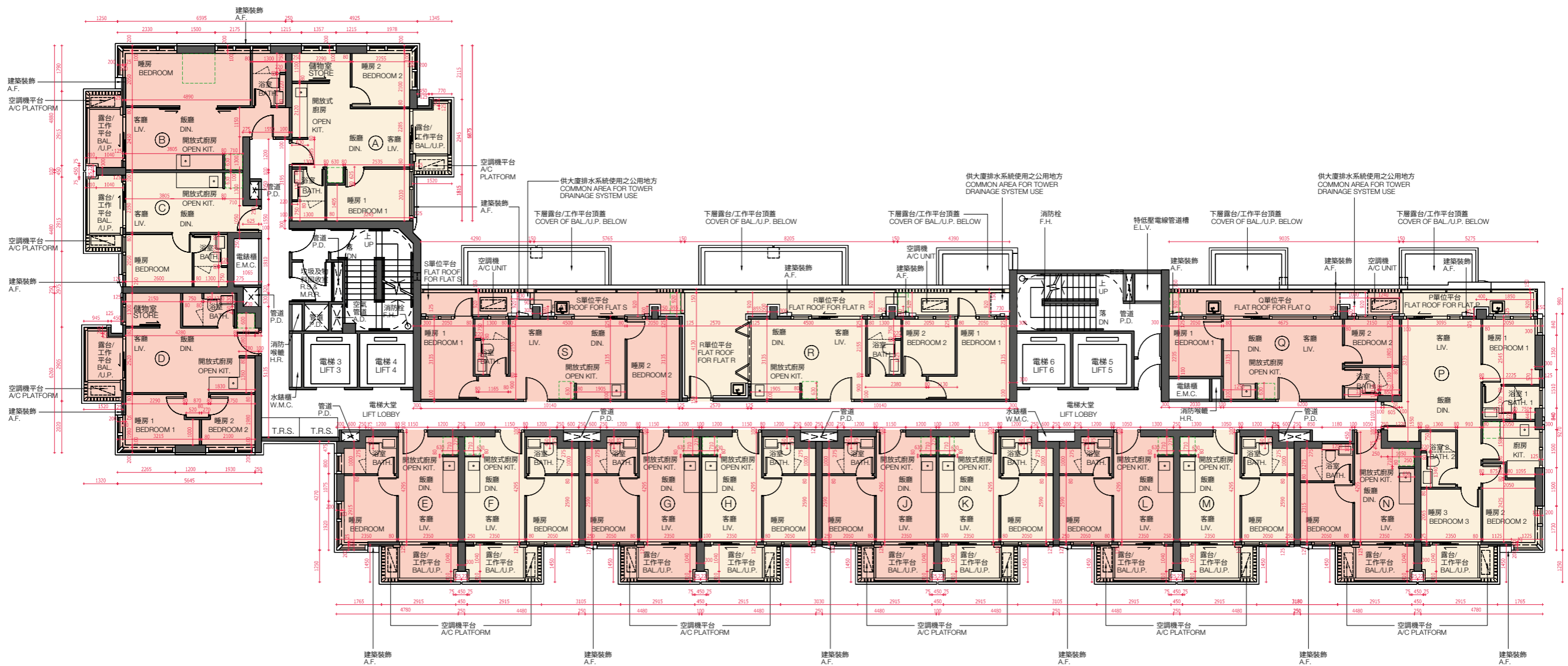
The internal areas of residential properties on the upper floors will generally be slightly larger than those on the lower floors because of the reducing thickness of the structural walls on the upper floors.

請參閱本售樓說明書第26頁為發展項目的住宅物業的樓面平面圖而設之備註和圖例。

Please refer to page 26 of this sales brochure for the notes and legends for the floor plans of residential properties in the Development.

10 發展項目的住宅物業的樓面平面圖 FLOOR PLANS OF RESIDENTIAL PROPERTIES IN THE DEVELOPMENT

28樓
28/F



比例尺 Scale 0米(m) 5米(m)

備註：平面圖所列數字為以毫米標示之建築結構尺寸。
Note: The dimensions of the floor plans are all structural dimensions measured in millimeters.

10 發展項目的住宅物業的樓面平面圖 FLOOR PLANS OF RESIDENTIAL PROPERTIES IN THE DEVELOPMENT

每個住宅物業 Each Residential Property	樓層 Floor	單位 Flat																
		A	B	C	D	E	F	G	H	J	K	L	M	N	P	Q	R	S
樓板(不包括灰泥)的厚度(毫米) Thickness of Floor Slab (excluding plaster)(mm)	28樓 28/F	160, 200	160, 200	160, 200	160, 200	160	160	160	160	160	160	160	160	160	160, 200	160, 200	160	160
層與層之間的高度(毫米) Floor-to-Floor Height (mm)		2975, 3050, 3325	2975, 3050, 3325	2975, 3050, 3325	2975, 3050, 3325	2975, 3050, 3325	2975, 3050, 3325	2975, 3050, 3325	2975, 3050, 3325	2975, 3050, 3325	2975, 3050, 3325	2975, 3050, 3325	2975, 3050, 3325	2875, 2975, 3050, 3125, 3325	3125, 3325	2975, 3050, 3325	2975, 3050, 3325	2975, 3050, 3325

因住宅物業的較高樓層的結構牆的厚度遞減，較高樓層的內部面積，一般比較低樓層的內部面積稍大。

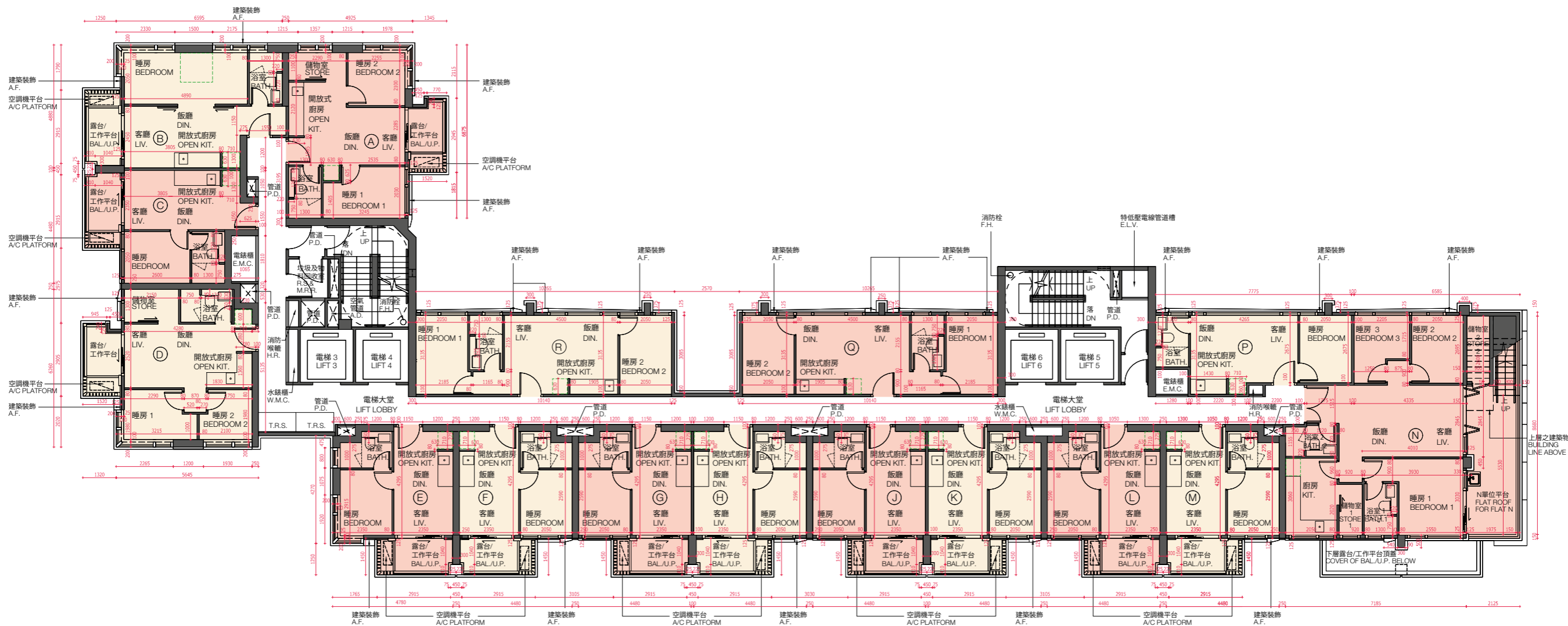
The internal areas of residential properties on the upper floors will generally be slightly larger than those on the lower floors because of the reducing thickness of the structural walls on the upper floors.

請參閱本售樓說明書第26頁為發展項目的住宅物業的樓面平面圖而設之備註和圖例。

Please refer to page 26 of this sales brochure for the notes and legends for the floor plans of residential properties in the Development.

10 發展項目的住宅物業的樓面平面圖 FLOOR PLANS OF RESIDENTIAL PROPERTIES IN THE DEVELOPMENT

29樓 29/F



比例尺 Scale 0米(m) 5米(m)

備註：平面圖所列數字為以毫米標示之建築結構尺寸。
Note: The dimensions of the floor plans are all structural dimensions measured in millimeters.

10 發展項目的住宅物業的樓面平面圖 FLOOR PLANS OF RESIDENTIAL PROPERTIES IN THE DEVELOPMENT

每個住宅物業 Each Residential Property	樓層 Floor	單位 Flat															
		A	B	C	D	E	F	G	H	J	K	L	M	N	P	Q	R
樓板(不包括灰泥)的厚度(毫米) Thickness of Floor Slab (excluding plaster)(mm)	29樓 29/F	160, 200, 250	160, 200	160, 200	160, 200	160, 175	160, 175	160, 175	160, 175	160, 175	160, 175	160, 175	160, 175	175	175	175	175
層與層之間的高度(毫米) Floor-to-Floor Height (mm)		3150, 3500	3500	3500	3150, 3500	3500	3500	3500	3500	3500	3500	3500	3150, 3500	3500	3500	3500	3500

因住宅物業的較高樓層的結構牆的厚度遞減，較高樓層的內部面積，一般比較低樓層的內部面積稍大。

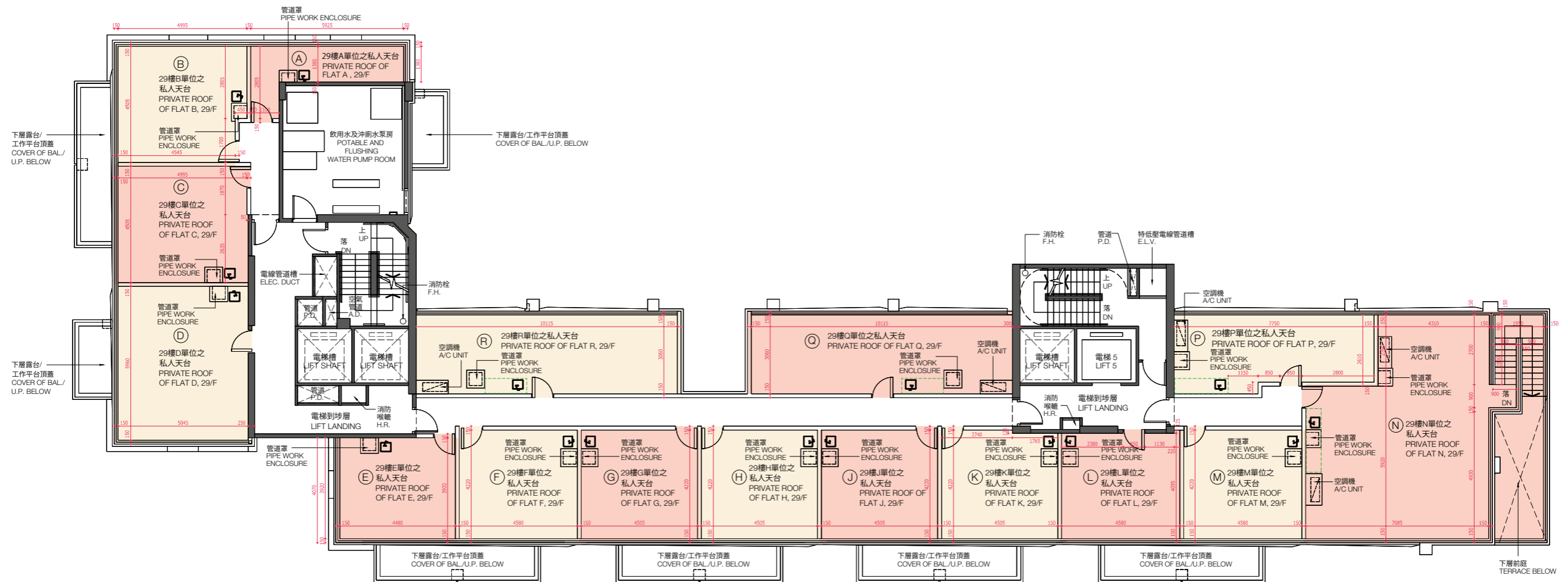
The internal areas of residential properties on the upper floors will generally be slightly larger than those on the lower floors because of the reducing thickness of the structural walls on the upper floors.

請參閱本售樓說明書第26頁為發展項目的住宅物業的樓面平面圖而設之備註和圖例。

Please refer to page 26 of this sales brochure for the notes and legends for the floor plans of residential properties in the Development.

10 發展項目的住宅物業的樓面平面圖 FLOOR PLANS OF RESIDENTIAL PROPERTIES IN THE DEVELOPMENT

天台 ROOF



比例尺 Scale 0米(m) 5米(m)

備註：平面圖所列數字為以毫米標示之建築結構尺寸。
Note: The dimensions of the floor plans are all structural dimensions measured in millimeters.

10 發展項目的住宅物業的樓面平面圖 FLOOR PLANS OF RESIDENTIAL PROPERTIES IN THE DEVELOPMENT

每個住宅物業 Each Residential Property	樓層 Floor	單位 Flat															
		A	B	C	D	E	F	G	H	J	K	L	M	N	P	Q	R
樓板(不包括灰泥)的厚度(毫米) Thickness of Floor Slab (excluding plaster)(mm)	天台 Roof	不適用 Not Applicable	不適用 Not Applicable	不適用 Not Applicable	不適用 Not Applicable	不適用 Not Applicable	不適用 Not Applicable	不適用 Not Applicable	不適用 Not Applicable	不適用 Not Applicable	不適用 Not Applicable	不適用 Not Applicable	不適用 Not Applicable	不適用 Not Applicable	不適用 Not Applicable	不適用 Not Applicable	不適用 Not Applicable
層與層之間的高度(毫米) Floor-to-Floor Height (mm)		不適用 Not Applicable	不適用 Not Applicable	不適用 Not Applicable	不適用 Not Applicable	不適用 Not Applicable	不適用 Not Applicable	不適用 Not Applicable	不適用 Not Applicable	不適用 Not Applicable	不適用 Not Applicable	不適用 Not Applicable	不適用 Not Applicable	不適用 Not Applicable	不適用 Not Applicable	不適用 Not Applicable	不適用 Not Applicable

因住宅物業的較高樓層的結構牆的厚度遞減，較高樓層的內部面積，一般比較低樓層的內部面積稍大。

The internal areas of residential properties on the upper floors will generally be slightly larger than those on the lower floors because of the reducing thickness of the structural walls on the upper floors.

請參閱本售樓說明書第26頁為發展項目的住宅物業的樓面平面圖而設之備註和圖例。

Please refer to page 26 of this sales brochure for the notes and legends for the floor plans of residential properties in the Development.