

FLOOR PLANS OF RESIDENTIAL PROPERTIES IN THE DEVELOPMENT

發展項目的住宅物業的樓面平面圖

2/F
2樓

Description 描述	Floor 樓層	Flat 單位			
		A	B	C	D
Floor-to-floor height (refers to the height between the top surface of the structural slab of a floor and the top surface of the structural slab of its immediate upper floor) of each residential property (mm) 每個住宅物業的層與層之間的高度 (指該樓層之石屎地台面與上一層石屎地台面之高度距離) (毫米)	2/F 2樓	3300			
Thickness of the floor slabs (excluding plaster) of each residential property (mm) 每個住宅物業的樓板 (不包括灰泥) 厚度 (毫米)		175 / 200			

The internal areas of the residential properties on the upper floors will generally be slightly larger than those on the lower floors because of the reducing thickness of the structural walls on the upper floors.

Remark : The dimensions in the floor plans are all structural dimensions in millimetre.

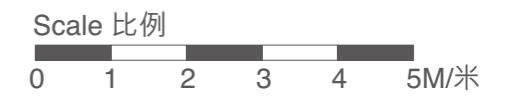
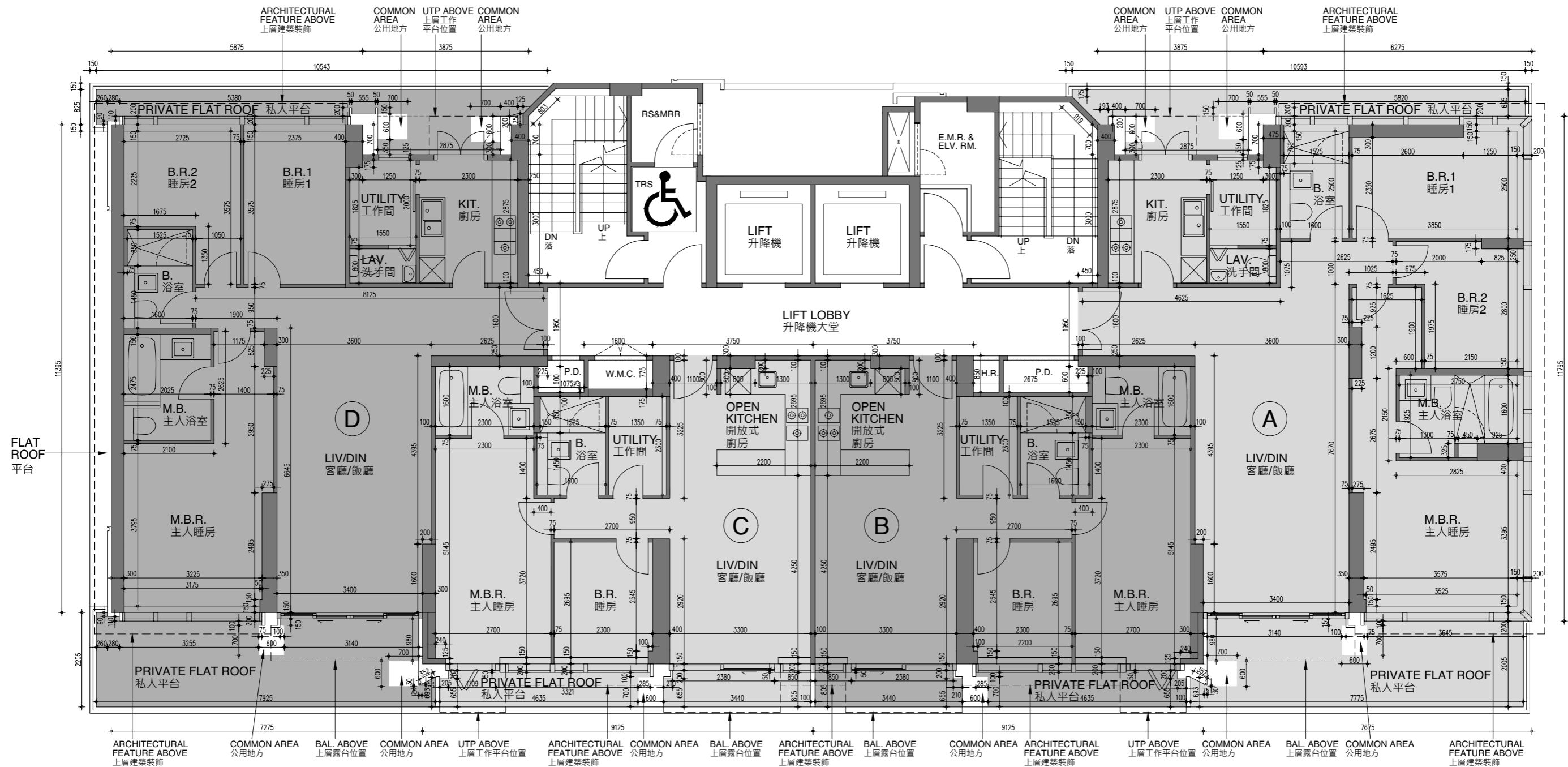
因住宅物業的較高樓層的結構牆的厚度遞減，較高樓層的內部面積，一般比較低樓層的內部面積稍大。

備註：樓面平面圖之尺規所列數字為以毫米標示之建築結構尺寸。

FLOOR PLANS OF RESIDENTIAL PROPERTIES IN THE DEVELOPMENT

發展項目的住宅物業的樓面平面圖

2/F
2樓



FLOOR PLANS OF RESIDENTIAL PROPERTIES IN THE DEVELOPMENT

發展項目的住宅物業的樓面平面圖

3/F - 6/F
3樓至6樓

Description 描述	Floor 樓層	Flat 單位			
		A	B	C	D
Floor-to-floor height (refers to the height between the top surface of the structural slab of a floor and the top surface of the structural slab of its immediate upper floor) of each residential property (mm) 每個住宅物業的層與層之間的高度 (指該樓層之石屎地台面與上一層石屎地台面之高度距離) (毫米)	3/F - 5/F 3樓至5樓	3300			
	6/F 6樓	3300	3300 / 2900		3300
Thickness of the floor slabs (excluding plaster) of each residential property (mm) 每個住宅物業的樓板 (不包括灰泥) 厚度 (毫米)	3/F - 5/F 3樓至5樓	175 / 200			
	6/F 6樓	175 / 200			

The internal areas of the residential properties on the upper floors will generally be slightly larger than those on the lower floors because of the reducing thickness of the structural walls on the upper floors.

Remark : The dimensions in the floor plans are all structural dimensions in millimetre.

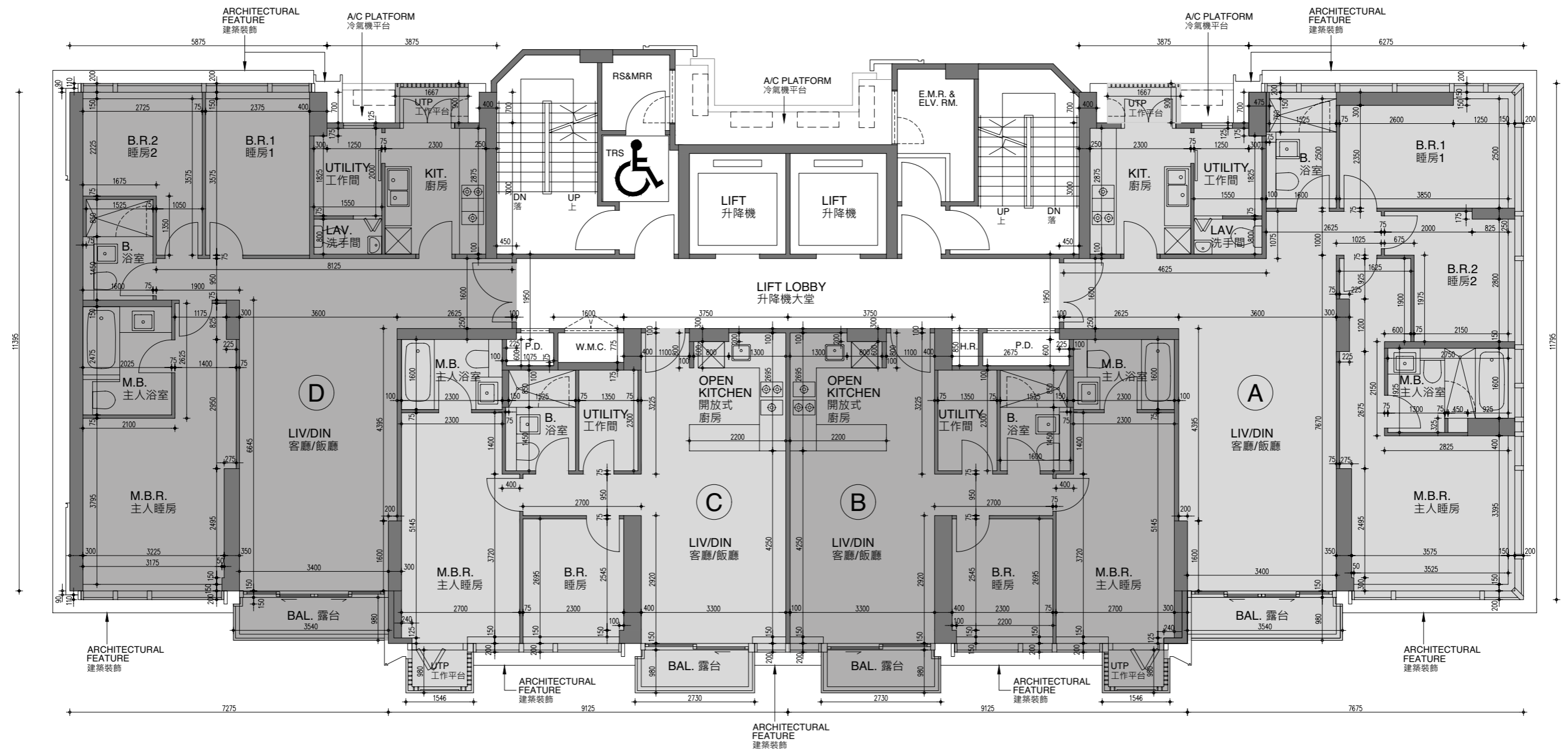
因住宅物業的較高樓層的結構牆的厚度遞減，較高樓層的內部面積，一般比較低樓層的內部面積稍大。

備註：樓面平面圖之尺規所列數字為以毫米標示之建築結構尺寸。

FLOOR PLANS OF RESIDENTIAL PROPERTIES IN THE DEVELOPMENT

發展項目的住宅物業的樓面平面圖

3/F - 6/F
3樓至6樓



FLOOR PLANS OF RESIDENTIAL PROPERTIES IN THE DEVELOPMENT

發展項目的住宅物業的樓面平面圖

7/F
7樓

Description 描述	Floor 樓層	Flat 單位		
		A	B	C
Floor-to-floor height (refers to the height between the top surface of the structural slab of a floor and the top surface of the structural slab of its immediate upper floor) of each residential property (mm) 每個住宅物業的層與層之間的高度 (指該樓層之石屎地台面與上一層石屎地台面之高度距離) (毫米)	7/F 7樓	3500		
Thickness of the floor slabs (excluding plaster) of each residential property (mm) 每個住宅物業的樓板 (不包括灰泥) 厚度 (毫米)		175 / 200		

The internal areas of the residential properties on the upper floors will generally be slightly larger than those on the lower floors because of the reducing thickness of the structural walls on the upper floors.

Remark : The dimensions in the floor plans are all structural dimensions in millimetre.

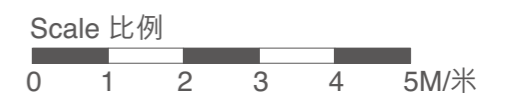
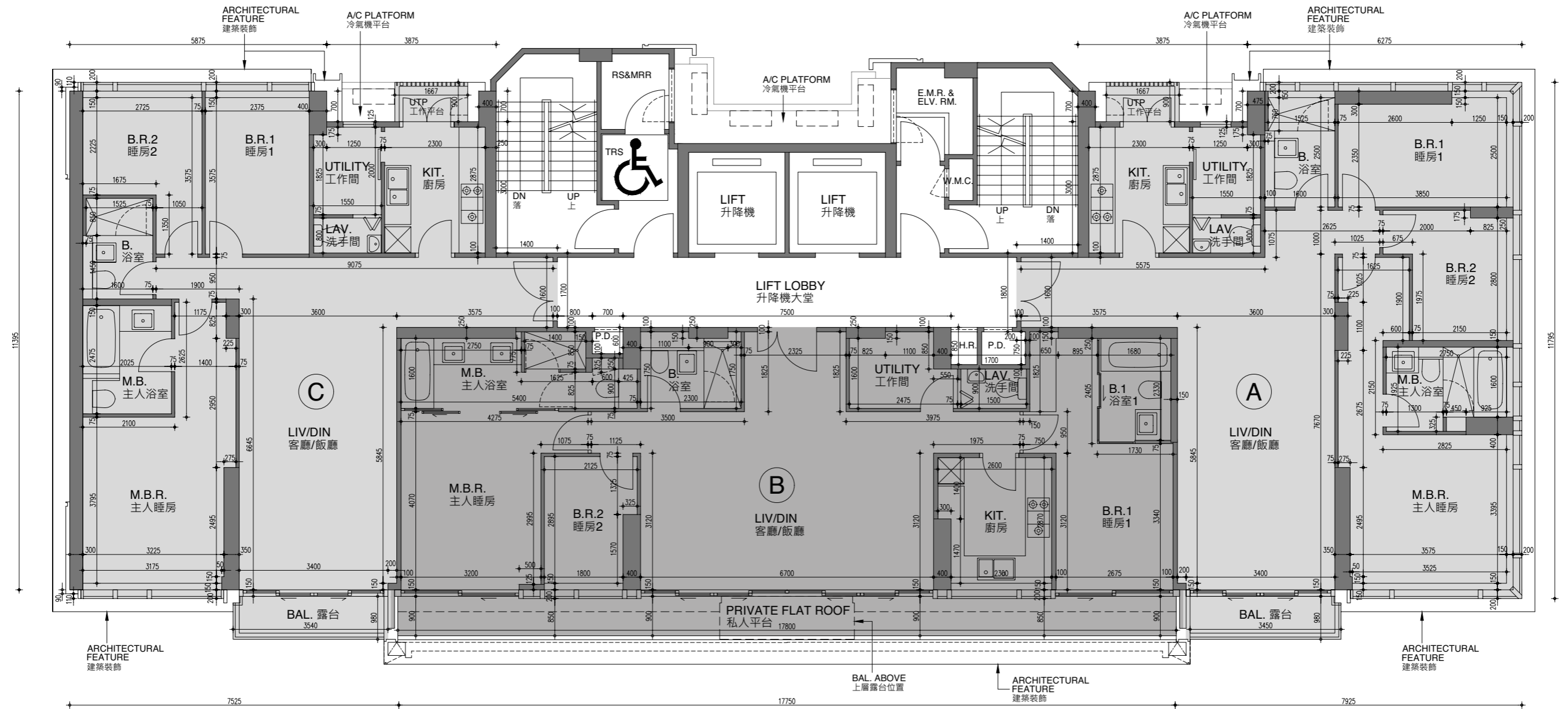
因住宅物業的較高樓層的結構牆的厚度遞減，較高樓層的內部面積，一般比較低樓層的內部面積稍大。

備註：樓面平面圖之尺規所列數字為以毫米標示之建築結構尺寸。

FLOOR PLANS OF RESIDENTIAL PROPERTIES IN THE DEVELOPMENT

發展項目的住宅物業的樓面平面圖

7/F
7樓



FLOOR PLANS OF RESIDENTIAL PROPERTIES IN THE DEVELOPMENT

發展項目的住宅物業的樓面平面圖

7/F
7樓

Description 描述	Floor 樓層	Flat 單位		
		A	B	C
Floor-to-floor height (refers to the height between the top surface of the structural slab of a floor and the top surface of the structural slab of its immediate upper floor) of each residential property (mm) 每個住宅物業的層與層之間的高度 (指該樓層之石屎地台面與上一層石屎地台面之高度距離) (毫米)	7/F 7樓	3500		
Thickness of the floor slabs (excluding plaster) of each residential property (mm) 每個住宅物業的樓板 (不包括灰泥) 厚度 (毫米)		175 / 200		

The internal areas of the residential properties on the upper floors will generally be slightly larger than those on the lower floors because of the reducing thickness of the structural walls on the upper floors.

Remark : The dimensions in the floor plans are all structural dimensions in millimetre.

因住宅物業的較高樓層的結構牆的厚度遞減，較高樓層的內部面積，一般比較低樓層的內部面積稍大。

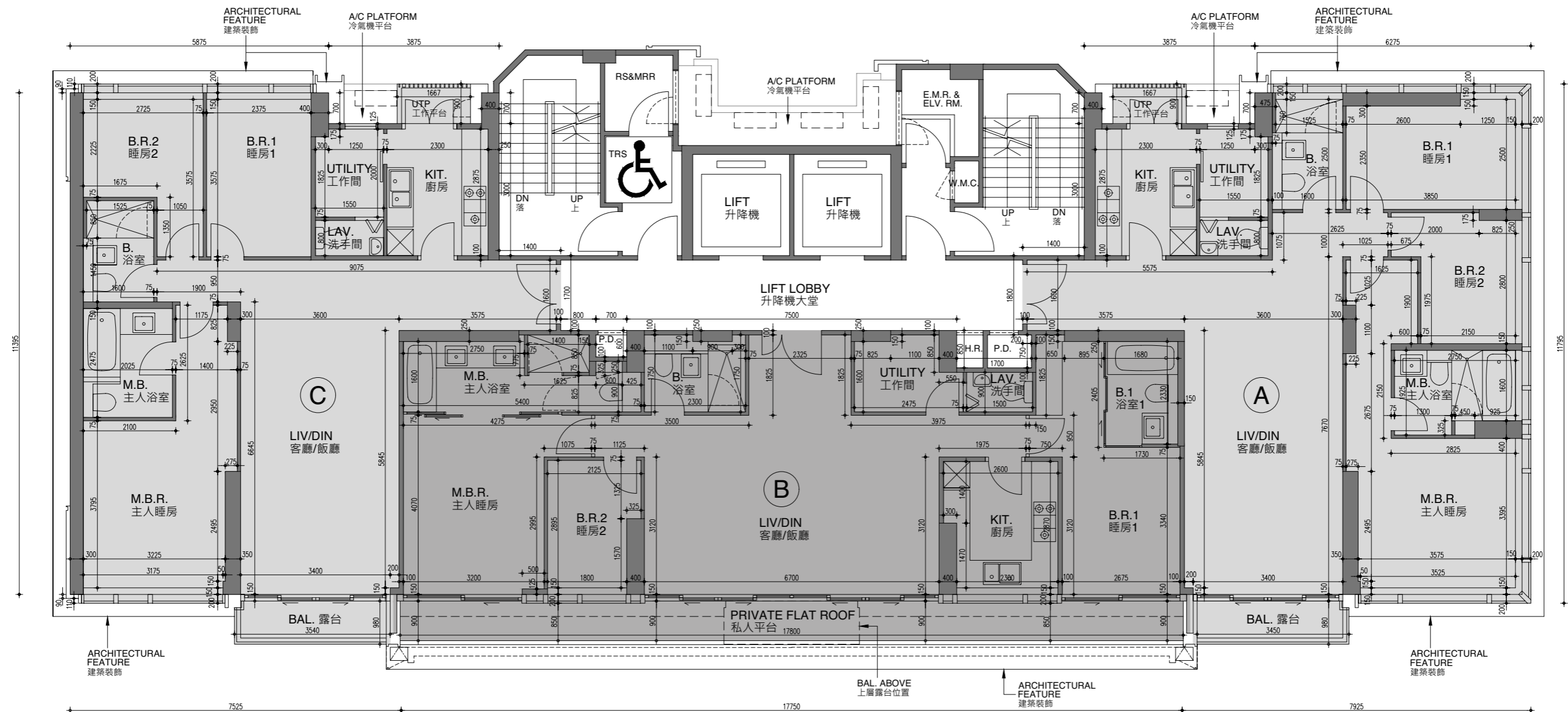
備註：樓面平面圖之尺規所列數字為以毫米標示之建築結構尺寸。

FLOOR PLANS OF RESIDENTIAL PROPERTIES IN THE DEVELOPMENT

發展項目的住宅物業的樓面平面圖

7/F Floor Plan in "as-is" Layout

7樓樓面現狀平面圖



Remarks:

Flat B has been altered by way of minor works or exempted works under Building Ordinance after the completion of the Development. The approximate location of the alteration is indicated on this floor plan.

The Alteration works include :

** Change of numbers and direction of sliding door leaves in B.1

備註:

單位B在發展項目落成後進行小型工程或獲<建築物條例>豁免的工程而有所改動。該等改動的大概位置已於本樓面平面圖中作標示。

改動工程包括:

**更改浴室1趟門數目及方向

Scale 比例



FLOOR PLANS OF RESIDENTIAL PROPERTIES IN THE DEVELOPMENT

發展項目的住宅物業的樓面平面圖

8/F - 10/F
8樓至10樓

Description 描述	Floor 樓層	Flat 單位		
		A	B	C
Floor-to-floor height (refers to the height between the top surface of the structural slab of a floor and the top surface of the structural slab of its immediate upper floor) of each residential property (mm) 每個住宅物業的層與層之間的高度 (指該樓層之石屎地台面與上一層石屎地台面之高度距離) (毫米)	8/F - 10/F 8樓至10樓	3500		
Thickness of the floor slabs (excluding plaster) of each residential property (mm) 每個住宅物業的樓板 (不包括灰泥) 厚度 (毫米)		175 / 200		

The internal areas of the residential properties on the upper floors will generally be slightly larger than those on the lower floors because of the reducing thickness of the structural walls on the upper floors.

Remark : The dimensions in the floor plans are all structural dimensions in millimetre.

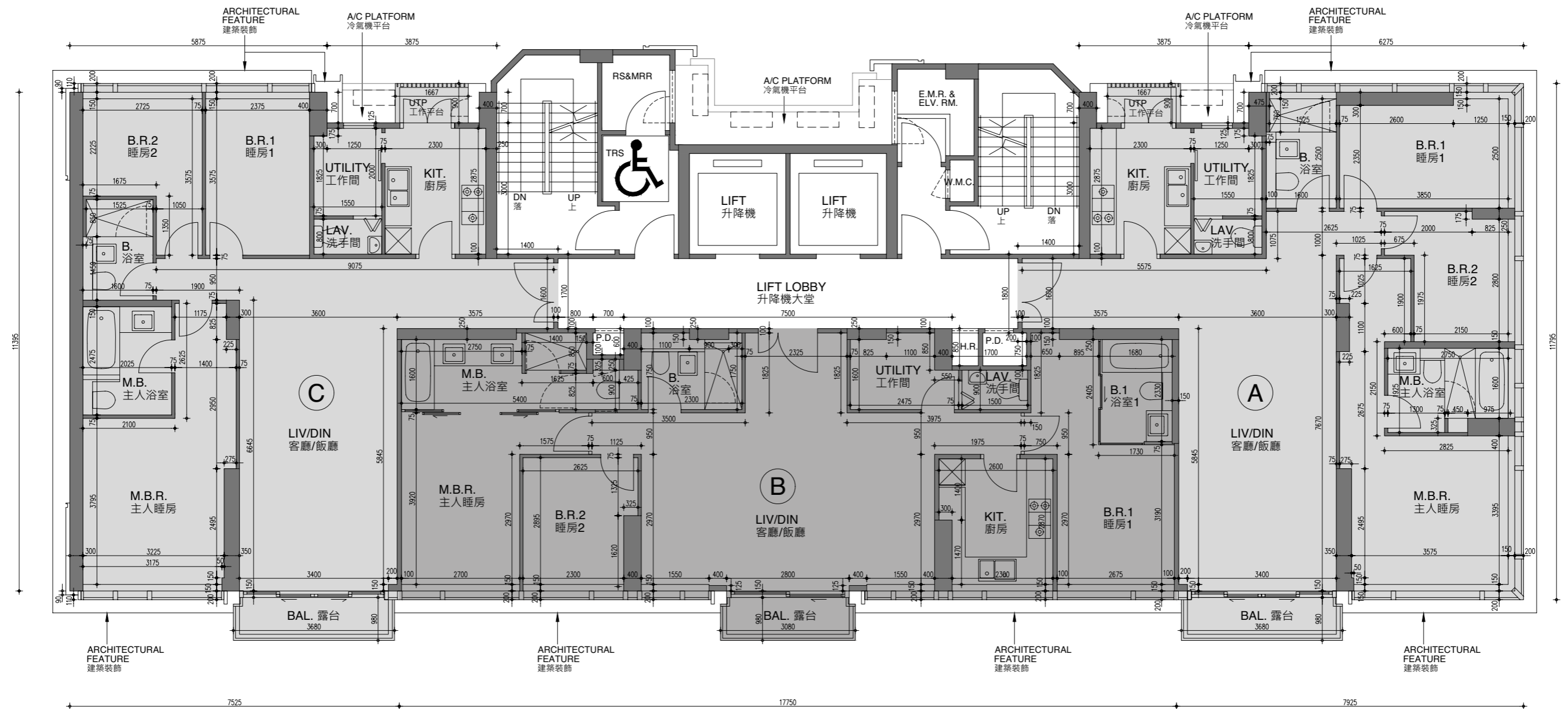
因住宅物業的較高樓層的結構牆的厚度遞減，較高樓層的內部面積，一般比較低樓層的內部面積稍大。

備註：樓面平面圖之尺規所列數字為以毫米標示之建築結構尺寸。

FLOOR PLANS OF RESIDENTIAL PROPERTIES IN THE DEVELOPMENT

發展項目的住宅物業的樓面平面圖

8/F - 10/F
8樓至10樓



FLOOR PLANS OF RESIDENTIAL PROPERTIES IN THE DEVELOPMENT

發展項目的住宅物業的樓面平面圖

8/F - 10/F
8樓至10樓

Description 描述	Floor 樓層	Flat 單位		
		A	B	C
Floor-to-floor height (refers to the height between the top surface of the structural slab of a floor and the top surface of the structural slab of its immediate upper floor) of each residential property (mm) 每個住宅物業的層與層之間的高度 (指該樓層之石屎地台面與上一層石屎地台面之高度距離) (毫米)	8/F - 10/F 8樓至10樓	3500		
Thickness of the floor slabs (excluding plaster) of each residential property (mm) 每個住宅物業的樓板 (不包括灰泥) 厚度 (毫米)		175 / 200		

The internal areas of the residential properties on the upper floors will generally be slightly larger than those on the lower floors because of the reducing thickness of the structural walls on the upper floors.

Remark : The dimensions in the floor plans are all structural dimensions in millimetre.

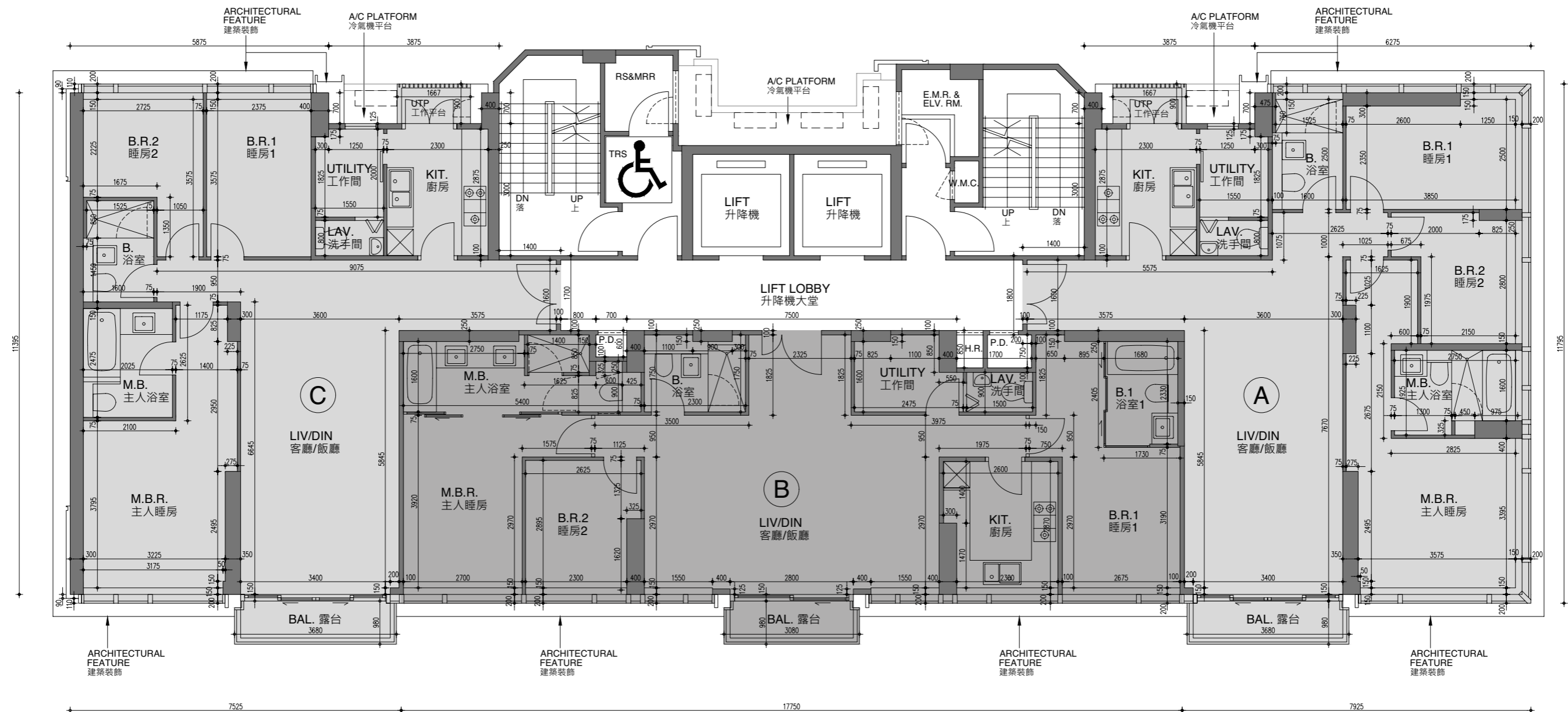
因住宅物業的較高樓層的結構牆的厚度遞減，較高樓層的內部面積，一般比較低樓層的內部面積稍大。

備註：樓面平面圖之尺規所列數字為以毫米標示之建築結構尺寸。

FLOOR PLANS OF RESIDENTIAL PROPERTIES IN THE DEVELOPMENT

發展項目的住宅物業的樓面平面圖

8/F - 10/F Floor Plan in "as-is" Layout
8樓至10樓樓面現狀平面圖



Remarks:
Flat B has been altered by way of minor works or exempted works under Building Ordinance after the completion of the Development. The approximate location of the alteration is indicated on this floor plan.
The Alteration works include :
** Change of numbers and direction of sliding door leaves in B.1

備註：
單位B在發展項目落成後進行小型工程或獲<建築物條例>豁免的工程而有所改動。該等改動的大概位置已於本樓面平面圖中作標示。
改動工程包括：
**更改浴室1趟門數目及方向



FLOOR PLANS OF RESIDENTIAL PROPERTIES IN THE DEVELOPMENT

發展項目的住宅物業的樓面平面圖

11/F
11樓

Description 描述	Floor 樓層	Flat 單位		
		A	B	C
Floor-to-floor height (refers to the height between the top surface of the structural slab of a floor and the top surface of the structural slab of its immediate upper floor) of each residential property (mm) 每個住宅物業的層與層之間的高度 (指該樓層之石屎地台面與上一層石屎地台面之高度距離) (毫米)	11/F 11樓	3500		
Thickness of the floor slabs (excluding plaster) of each residential property (mm) 每個住宅物業的樓板 (不包括灰泥) 厚度 (毫米)		175 / 200		

The internal areas of the residential properties on the upper floors will generally be slightly larger than those on the lower floors because of the reducing thickness of the structural walls on the upper floors.

Remark : The dimensions in the floor plans are all structural dimensions in millimetre.

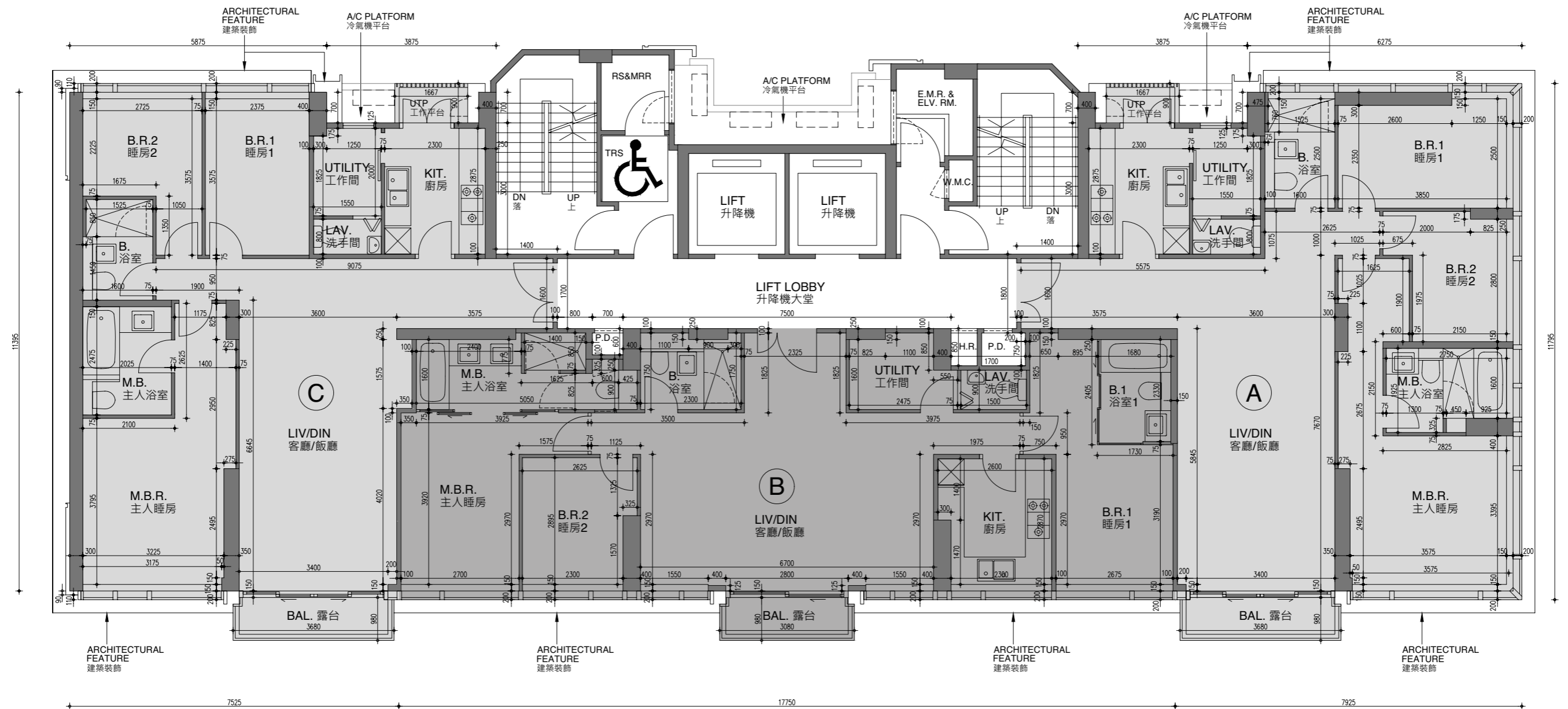
因住宅物業的較高樓層的結構牆的厚度遞減，較高樓層的內部面積，一般比較低樓層的內部面積稍大。

備註：樓面平面圖之尺規所列數字為以毫米標示之建築結構尺寸。

FLOOR PLANS OF RESIDENTIAL PROPERTIES IN THE DEVELOPMENT

發展項目的住宅物業的樓面平面圖

11/F
11樓



FLOOR PLANS OF RESIDENTIAL PROPERTIES IN THE DEVELOPMENT

發展項目的住宅物業的樓面平面圖

12/F
12樓

Description 描述	Floor 樓層	Flat 單位		
		A	B	C
Floor-to-floor height (refers to the height between the top surface of the structural slab of a floor and the top surface of the structural slab of its immediate upper floor) of each residential property (mm) 每個住宅物業的層與層之間的高度 (指該樓層之石屎地台面與上一層石屎地台面之高度距離) (毫米)	12/F 12樓	3500 / 3100		
Thickness of the floor slabs (excluding plaster) of each residential property (mm) 每個住宅物業的樓板 (不包括灰泥) 厚度 (毫米)		175 / 200		

The internal areas of the residential properties on the upper floors will generally be slightly larger than those on the lower floors because of the reducing thickness of the structural walls on the upper floors.

Remark : The dimensions in the floor plans are all structural dimensions in millimetre.

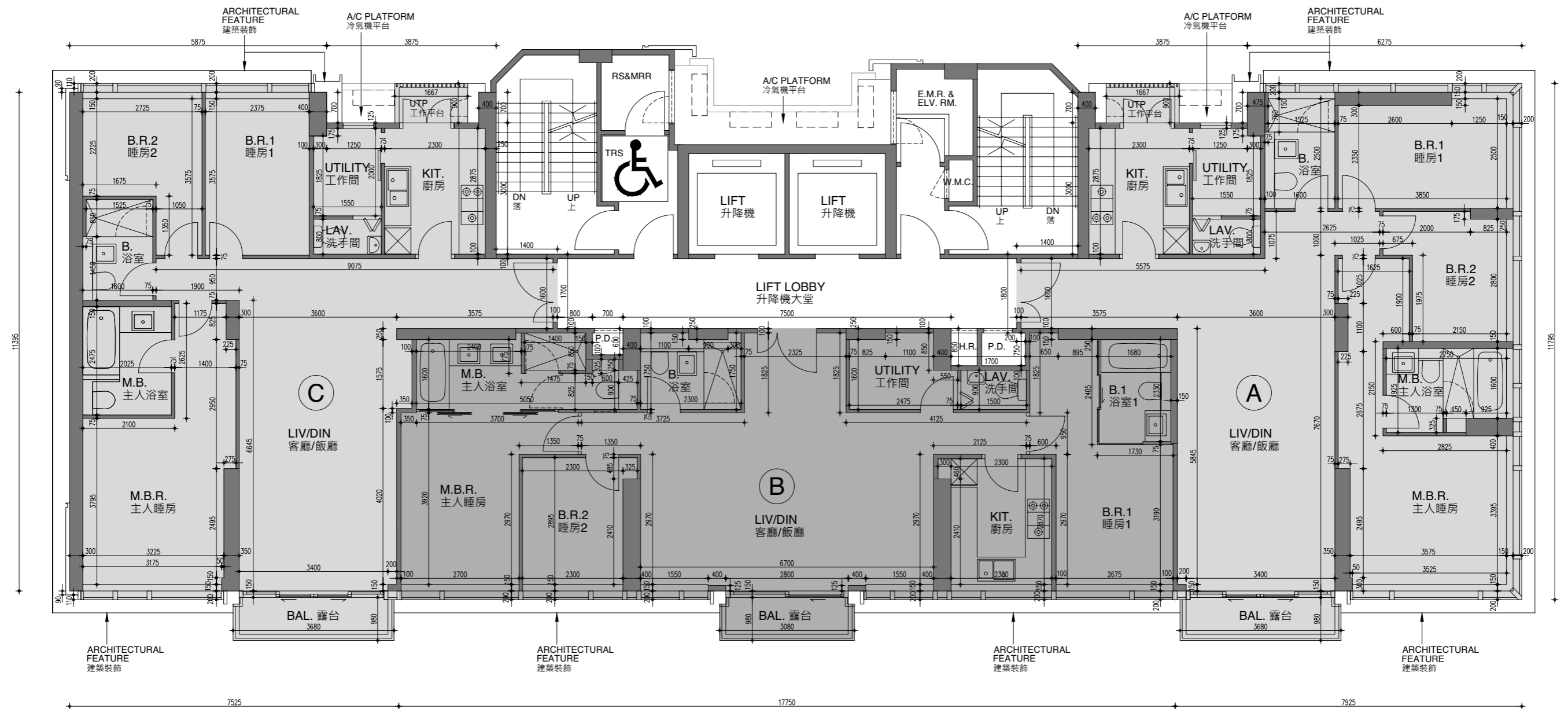
因住宅物業的較高樓層的結構牆的厚度遞減，較高樓層的內部面積，一般比較低樓層的內部面積稍大。

備註：樓面平面圖之尺規所列數字為以毫米標示之建築結構尺寸。

FLOOR PLANS OF RESIDENTIAL PROPERTIES IN THE DEVELOPMENT

發展項目的住宅物業的樓面平面圖

12/F
12樓



FLOOR PLANS OF RESIDENTIAL PROPERTIES IN THE DEVELOPMENT

發展項目的住宅物業的樓面平面圖

12/F
12樓

Description 描述	Floor 樓層	Flat 單位		
		A	B	C
Floor-to-floor height (refers to the height between the top surface of the structural slab of a floor and the top surface of the structural slab of its immediate upper floor) of each residential property (mm) 每個住宅物業的層與層之間的高度 (指該樓層之石屎地台面與上一層石屎地台面之高度距離) (毫米)	12/F 12樓	3500 / 3100		
Thickness of the floor slabs (excluding plaster) of each residential property (mm) 每個住宅物業的樓板 (不包括灰泥) 厚度 (毫米)		175 / 200		

The internal areas of the residential properties on the upper floors will generally be slightly larger than those on the lower floors because of the reducing thickness of the structural walls on the upper floors.

Remark : The dimensions in the floor plans are all structural dimensions in millimetre.

因住宅物業的較高樓層的結構牆的厚度遞減，較高樓層的內部面積，一般比較低樓層的內部面積稍大。

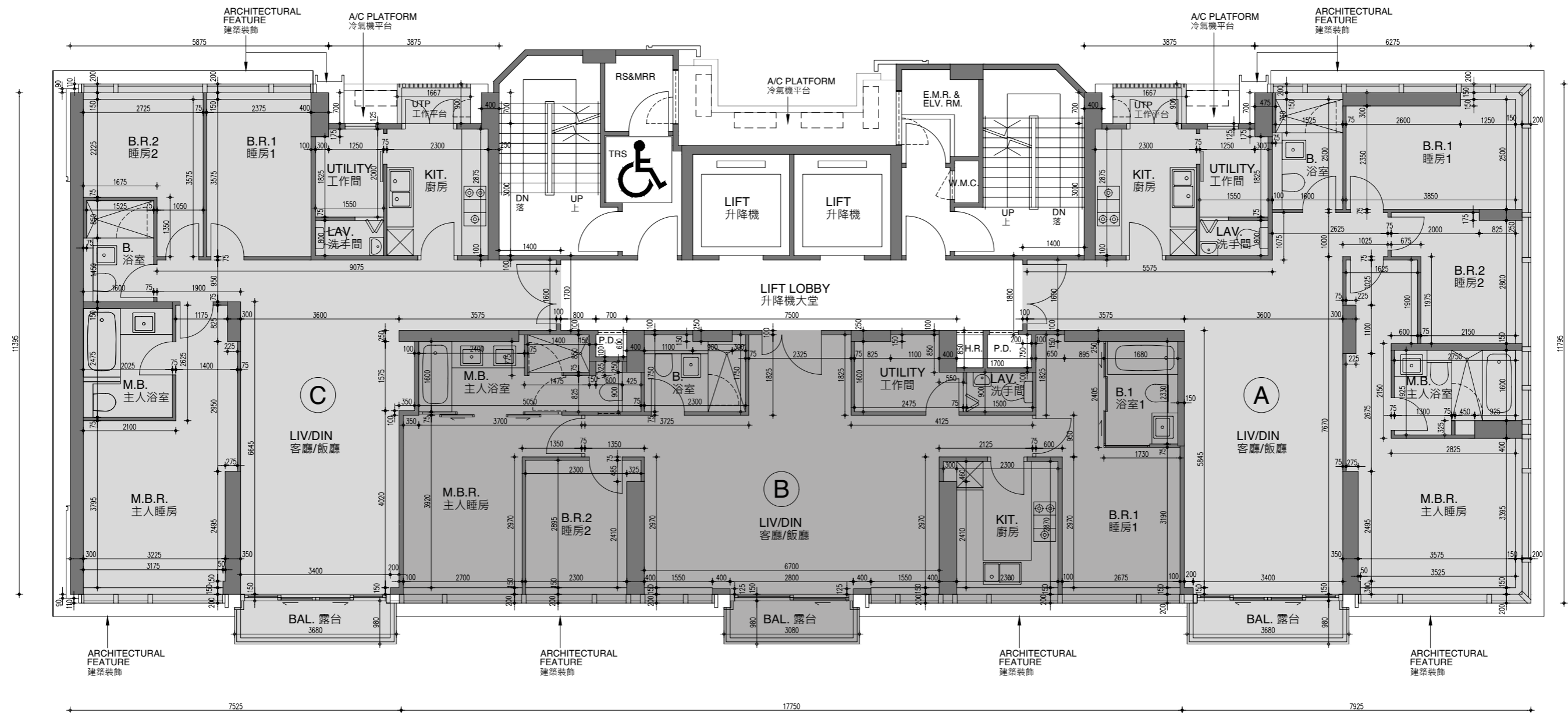
備註：樓面平面圖之尺規所列數字為以毫米標示之建築結構尺寸。

FLOOR PLANS OF RESIDENTIAL PROPERTIES IN THE DEVELOPMENT

發展項目的住宅物業的樓面平面圖

12/F Floor Plan in "as-is" Layout

12樓樓面現狀平面圖



Remarks:

Flat B has been altered by way of minor works or exempted works under Building Ordinance after the completion of the Development. The approximate location of the alteration is indicated on this floor plan.

The Alteration works include :

** Change of numbers and direction of sliding door leaves in B.1

備註:

單位B在發展項目落成後進行小型工程或獲<建築物條例>豁免的工程而有所改動。該等改動的大概位置已於本樓面平面圖中作標示。

改動工程包括：

**更改浴室1趟門數目及方向

Scale 比例



FLOOR PLANS OF RESIDENTIAL PROPERTIES IN THE DEVELOPMENT

發展項目的住宅物業的樓面平面圖

13/F
13樓

Description 描述	Floor 樓層	Flat 單位	
		A	B
Floor-to-floor height (refers to the height between the top surface of the structural slab of a floor and the top surface of the structural slab of its immediate upper floor) of each residential property (mm) 每個住宅物業的層與層之間的高度 (指該樓層之石屎地台面與上一層石屎地台面之高度距離) (毫米)	13/F 13樓	3500	
Thickness of the floor slabs (excluding plaster) of each residential property (mm) 每個住宅物業的樓板 (不包括灰泥) 厚度 (毫米)		175 / 200	

The internal areas of the residential properties on the upper floors will generally be slightly larger than those on the lower floors because of the reducing thickness of the structural walls on the upper floors.

Remark : The dimensions in the floor plans are all structural dimensions in millimetre.

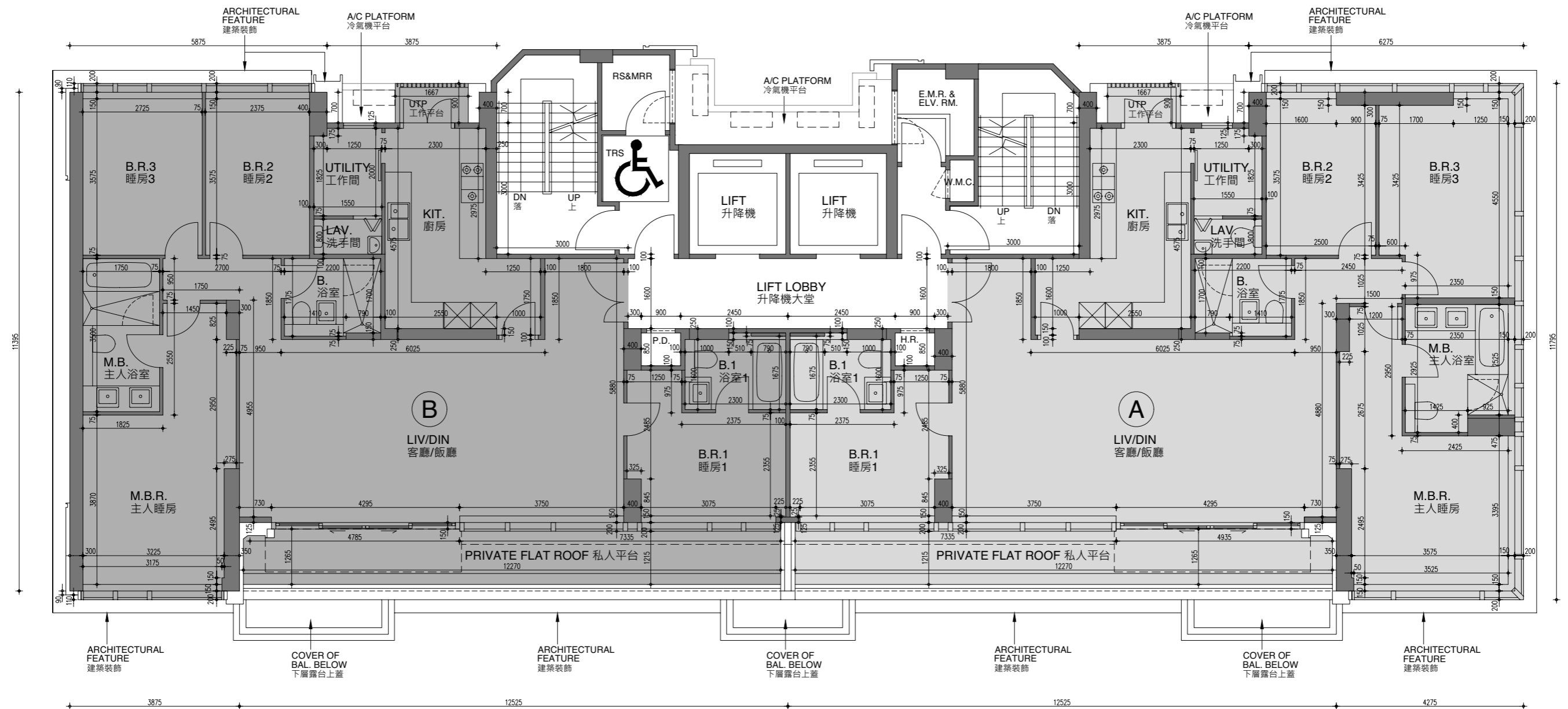
因住宅物業的較高樓層的結構牆的厚度遞減，較高樓層的內部面積，一般比較低樓層的內部面積稍大。

備註：樓面平面圖之尺規所列數字為以毫米標示之建築結構尺寸。

FLOOR PLANS OF RESIDENTIAL PROPERTIES IN THE DEVELOPMENT

發展項目的住宅物業的樓面平面圖

13/F
13樓



FLOOR PLANS OF RESIDENTIAL PROPERTIES IN THE DEVELOPMENT

發展項目的住宅物業的樓面平面圖

14/F
14樓

Description 描述	Floor 樓層	Flat 單位	
		A	B
Floor-to-floor height (refers to the height between the top surface of the structural slab of a floor and the top surface of the structural slab of its immediate upper floor) of each residential property (mm) 每個住宅物業的層與層之間的高度 (指該樓層之石屎地台面與上一層石屎地台面之高度距離) (毫米)	14/F 14樓	3500 / 3200	
Thickness of the floor slabs (excluding plaster) of each residential property (mm) 每個住宅物業的樓板 (不包括灰泥) 厚度 (毫米)		175 / 200	

The internal areas of the residential properties on the upper floors will generally be slightly larger than those on the lower floors because of the reducing thickness of the structural walls on the upper floors.

Remark : The dimensions in the floor plans are all structural dimensions in millimetre.

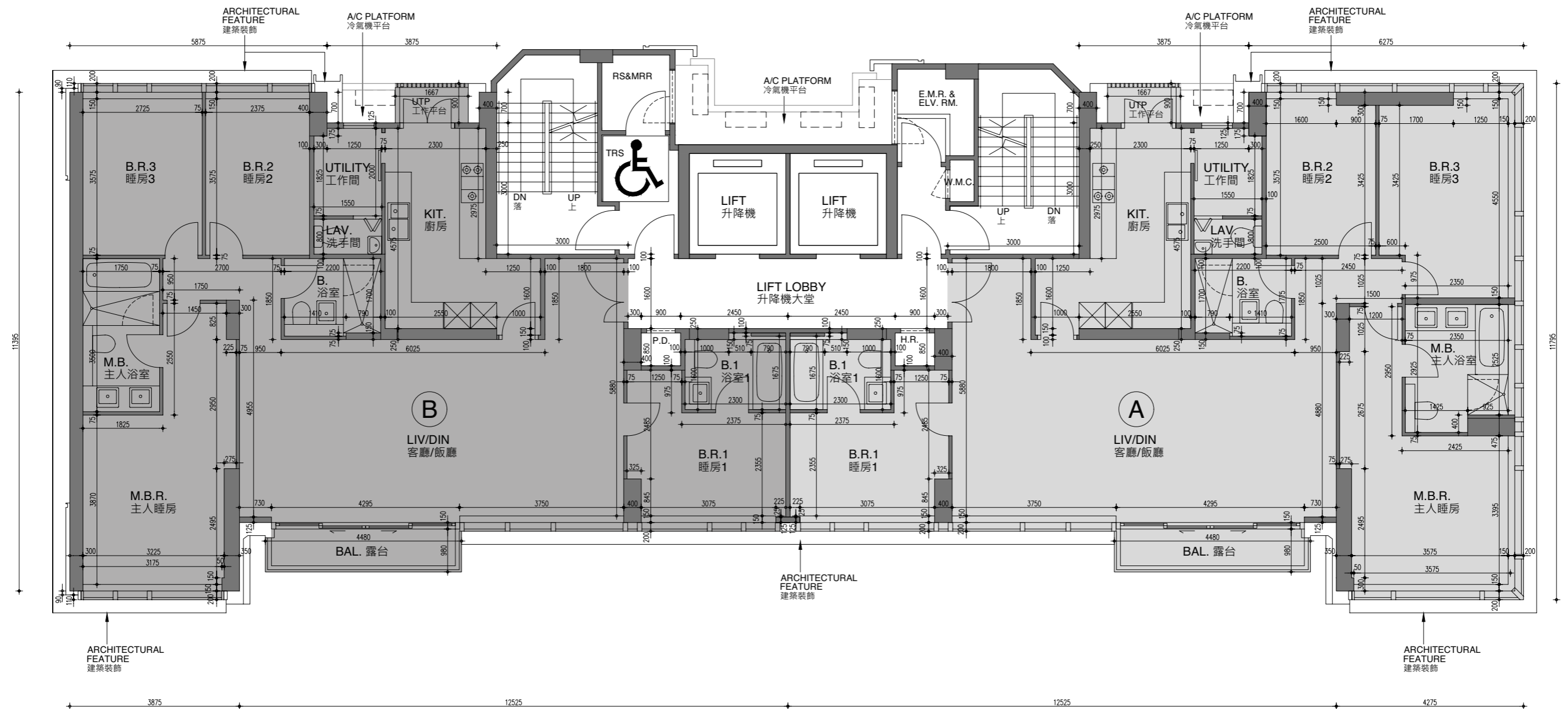
因住宅物業的較高樓層的結構牆的厚度遞減，較高樓層的內部面積，一般比較低樓層的內部面積稍大。

備註：樓面平面圖之尺規所列數字為以毫米標示之建築結構尺寸。

FLOOR PLANS OF RESIDENTIAL PROPERTIES IN THE DEVELOPMENT

發展項目的住宅物業的樓面平面圖

14/F
14樓



FLOOR PLANS OF RESIDENTIAL PROPERTIES IN THE DEVELOPMENT

發展項目的住宅物業的樓面平面圖

15/F
15樓

Description 描述	Floor 樓層	Flat 單位	
		A	B
Floor-to-floor height (refers to the height between the top surface of the structural slab of a floor and the top surface of the structural slab of its immediate upper floor) of each residential property (mm) 每個住宅物業的層與層之間的高度 (指該樓層之石屎地台面與上一層石屎地台面之高度距離) (毫米)	15/F 15樓	3500	
Thickness of the floor slabs (excluding plaster) of each residential property (mm) 每個住宅物業的樓板 (不包括灰泥) 厚度 (毫米)		175 / 200	

The internal areas of the residential properties on the upper floors will generally be slightly larger than those on the lower floors because of the reducing thickness of the structural walls on the upper floors.

Remark : The dimensions in the floor plans are all structural dimensions in millimetre.

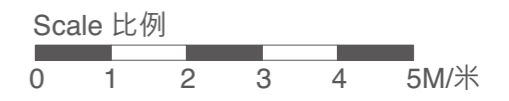
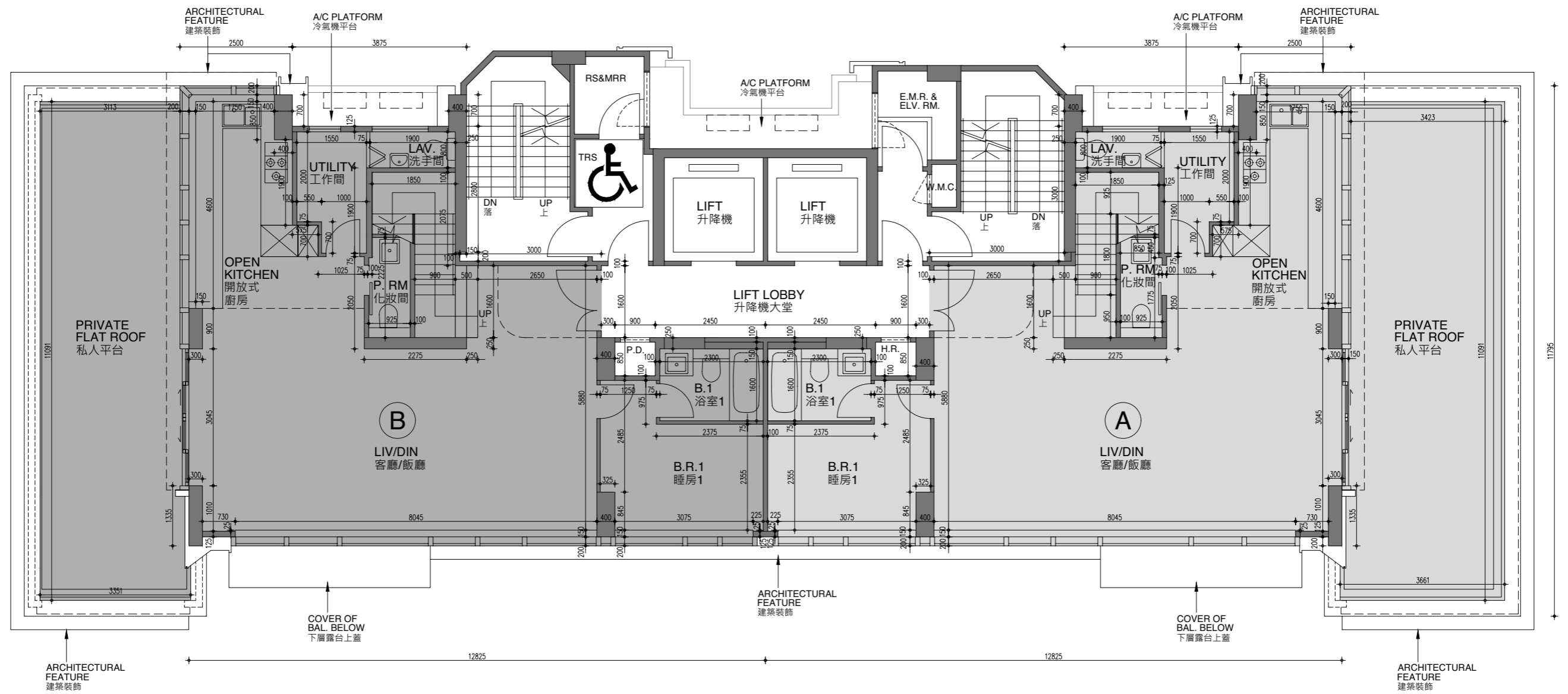
因住宅物業的較高樓層的結構牆的厚度遞減，較高樓層的內部面積，一般比較低樓層的內部面積稍大。

備註：樓面平面圖之尺規所列數字為以毫米標示之建築結構尺寸。

FLOOR PLANS OF RESIDENTIAL PROPERTIES IN THE DEVELOPMENT

發展項目的住宅物業的樓面平面圖

15/F
15樓



FLOOR PLANS OF RESIDENTIAL PROPERTIES IN THE DEVELOPMENT

發展項目的住宅物業的樓面平面圖

16/F
16樓

Description 描述	Floor 樓層	Flat 單位	
		A	B
Floor-to-floor height (refers to the height between the top surface of the structural slab of a floor and the top surface of the structural slab of its immediate upper floor) of each residential property (mm) 每個住宅物業的層與層之間的高度 (指該樓層之石屎地台面與上一層石屎地台面之高度距離) (毫米)	16/F 16樓	3500	
Thickness of the floor slabs (excluding plaster) of each residential property (mm) 每個住宅物業的樓板 (不包括灰泥) 厚度 (毫米)		175 / 200	

The internal areas of the residential properties on the upper floors will generally be slightly larger than those on the lower floors because of the reducing thickness of the structural walls on the upper floors.

Remark : The dimensions in the floor plans are all structural dimensions in millimetre.

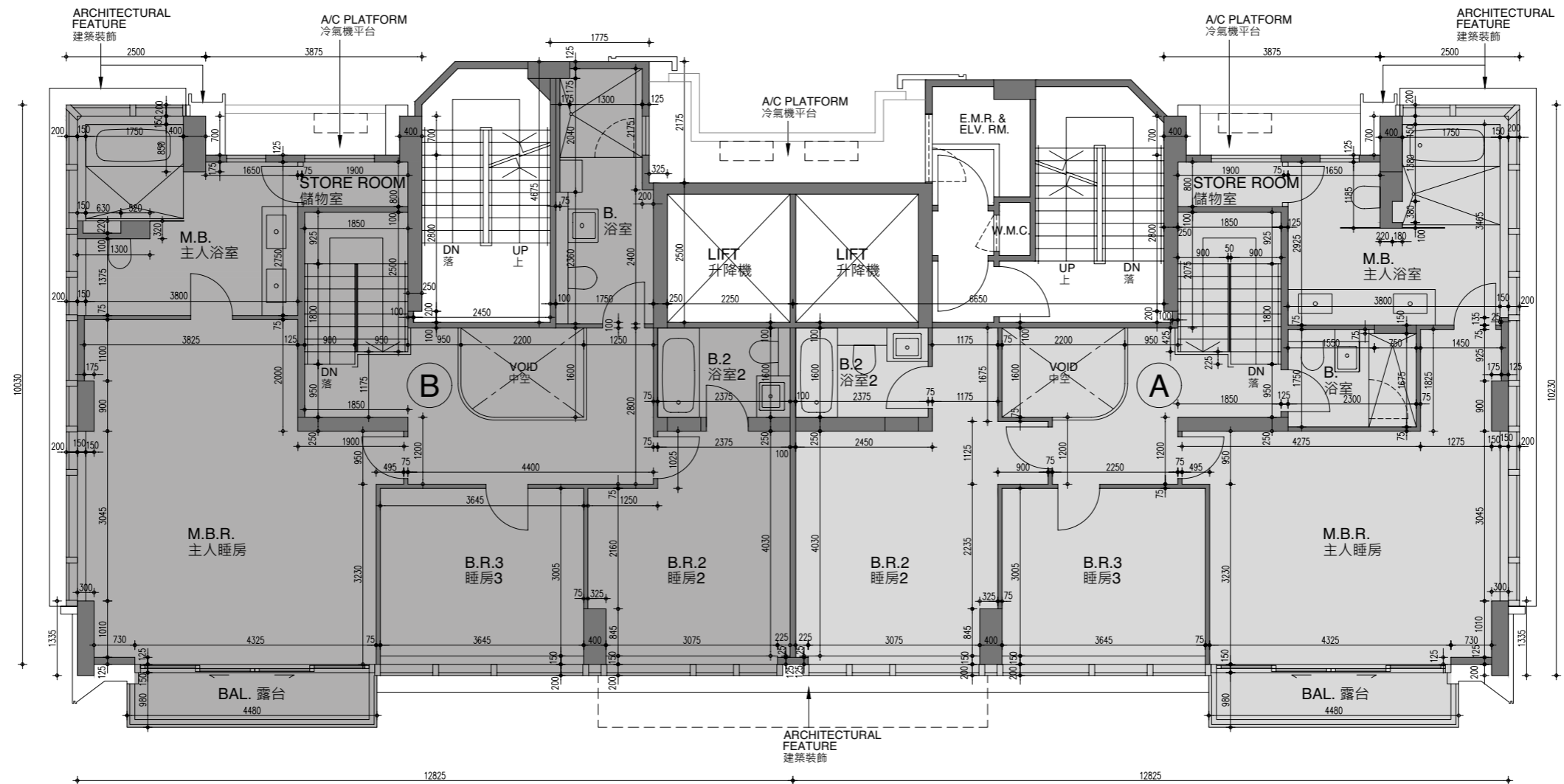
因住宅物業的較高樓層的結構牆的厚度遞減，較高樓層的內部面積，一般比較低樓層的內部面積稍大。

備註：樓面平面圖之尺規所列數字為以毫米標示之建築結構尺寸。

FLOOR PLANS OF RESIDENTIAL PROPERTIES IN THE DEVELOPMENT

發展項目的住宅物業的樓面平面圖

16/F
16樓



FLOOR PLANS OF RESIDENTIAL PROPERTIES IN THE DEVELOPMENT

發展項目的住宅物業的樓面平面圖

17/F
17樓

Description 描述	Floor 樓層	Flat 單位	
		A	B
Floor-to-floor height (refers to the height between the top surface of the structural slab of a floor and the top surface of the structural slab of its immediate upper floor) of each residential property (mm) 每個住宅物業的層與層之間的高度 (指該樓層之石屎地台面與上一層石屎地台面之高度距離) (毫米)	17F 17樓	3500	
Thickness of the floor slabs (excluding plaster) of each residential property (mm) 每個住宅物業的樓板 (不包括灰泥) 厚度 (毫米)		175 / 200	

The internal areas of the residential properties on the upper floors will generally be slightly larger than those on the lower floors because of the reducing thickness of the structural walls on the upper floors.

Remark : The dimensions in the floor plans are all structural dimensions in millimetre.

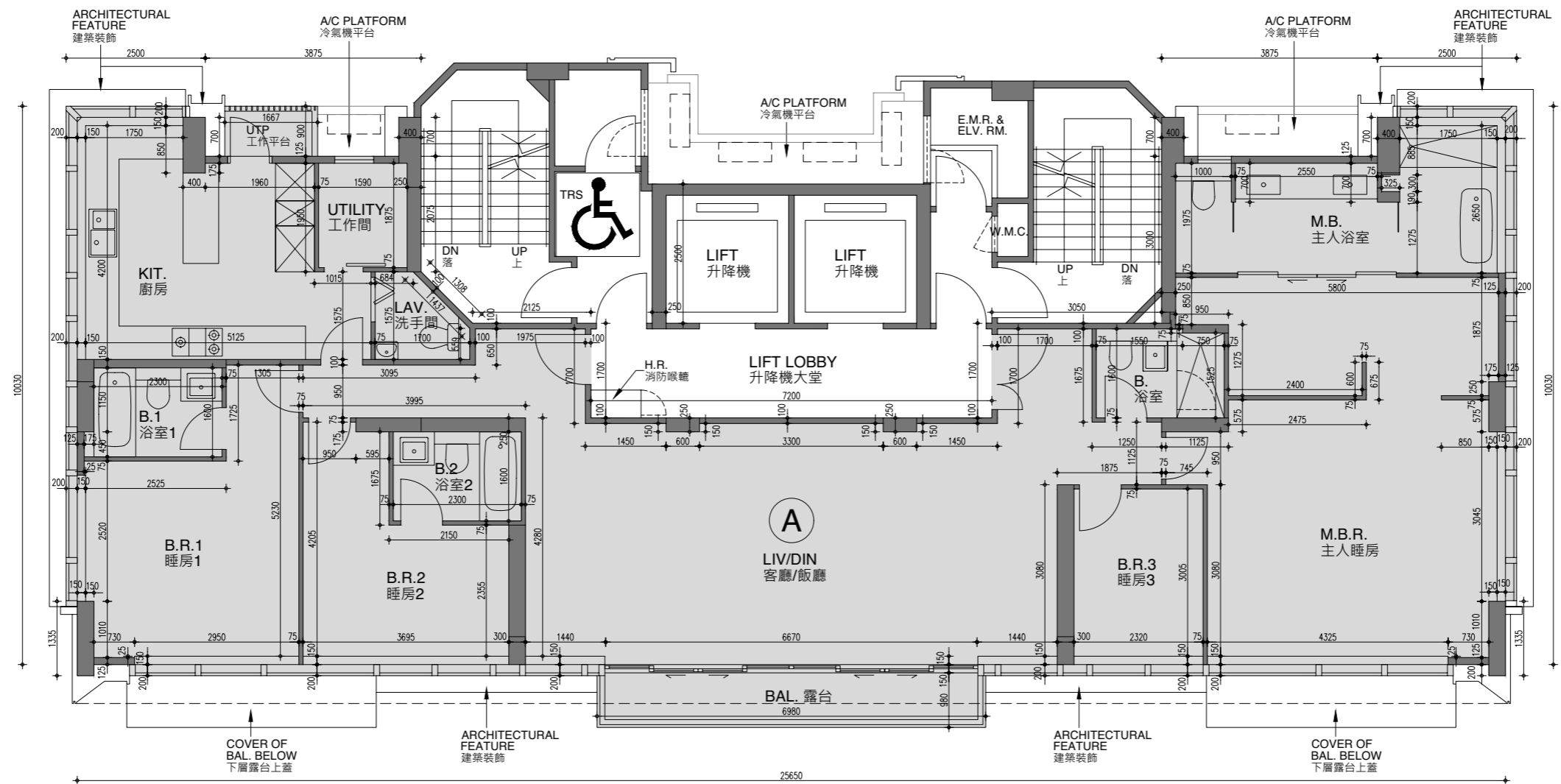
因住宅物業的較高樓層的結構牆的厚度遞減，較高樓層的內部面積，一般比較低樓層的內部面積稍大。

備註：樓面平面圖之尺規所列數字為以毫米標示之建築結構尺寸。

FLOOR PLANS OF RESIDENTIAL PROPERTIES IN THE DEVELOPMENT

發展項目的住宅物業的樓面平面圖

17/F
17樓



FLOOR PLANS OF RESIDENTIAL PROPERTIES IN THE DEVELOPMENT

發展項目的住宅物業的樓面平面圖

Remarks applicable to the floor plans in this section :

1. There are architectural features on external walls of some of the floors.
2. Common pipes exposed and/or enclosed in cladding are located at / adjacent to balcony and / or flat roof and / or utility platform and / or air-conditioning platform and / or external wall and / or roof of some residential units.
3. There are sunken slabs for mechanical and electrical services and / or false ceiling / bulkheads for the air-conditioning fittings and / or mechanical and electrical services at some residential properties.
4. Balconies and utility platforms are non-enclosed areas.
5. Symbols of fittings and fitments shown on the floor plans, such as bathtubs, sink, water closets, shower, sink counter, etc, are architectural symbols retrieved from the latest approved general building plans for general indication only.
6. For some residential units, the air-conditioning platform(s) outside the unit will be placed with air-conditioner outdoor unit(s) belonging to that unit and / or other residential units.
7. For some residential properties, the air-conditioner platform(s) outside the residential property will be placed with 1 or more than 1 air-conditioner (Outdoor Unit). These air-conditioners may generate heat and / or sound.
8. During the necessary maintenance of the external walls by manager of the Development, the gondola will be operating in the airspace outside the windows, curtain wall balconies and utility platform and over private flat roofs and roofs of the residential properties.

適用於本節之樓面平面圖之備註：

1. 部份樓層外牆範圍設有建築裝飾。
2. 部份住宅單位的露台及 / 或平台及 / 或工作平台及 / 或冷氣機平台及 / 或外牆及 / 或天台及 / 或附近設有外露及 / 或藏於外牆裝飾板內之公用喉管。
3. 部份住宅物業有用以安裝機電設備的跌級樓板及 / 或用以裝置空調裝備及 / 或其他機電設備的假天花 / 裝飾橫樑。
4. 露台及工作平台為不可封閉地方。
5. 樓面平面圖上所顯示的形象裝置符號，例如浴缸、洗滌盆、坐廁、淋浴間、洗滌盆櫃等乃摘自最新的經批准的建築圖則，只作一般性標誌。
6. 部份住宅物業外的冷氣機平台將會放置屬於其單位及 / 或其他住宅物業的一部或多部冷氣機室外機。
7. 部份住宅物業外的空調機平台將會放置一部或多部空調機(室外機)。該等空調機可能發出熱力及 / 或聲音。
8. 發展項目的管理人安排在外牆之必要維修進行期間，吊船將在該等大廈的住宅物業之窗戶外及幕牆外或平台及 / 或工作平台及 / 或冷氣機平台及 / 或私人平台及 / 天台上之空間運作。

Legend for floor plans of residential properties in the Development

發展項目的住宅物業的樓面平面圖圖例

A/C PLATFORM = AIR CONDITIONER PLATFORM = 冷氣機平台

ARCH. FEATURE ABOVE = ARCHITECTURAL FEATURE ABOVE = 上層建築裝飾

B. = BATHROOM = 浴室

B.1 = BATHROOM 1 = 浴室1

B.2 = BATHROOM 2 = 浴室2

BAL. = BALCONY = 露台

B.R. = BEDROOM = 睡房

B.R.1 = BEDROOM 1 = 睡房1

B.R.2 = BEDROOM 2 = 睡房2

B.R.3 = BEDROOM 3 = 睡房3

DN = DOWN = 落

E.M.R. & ELV. RM. = ELECTRICAL METER ROOM AND EXTRA-LOW VOLTAGE ROOM = 電錶房及特低壓電線房

H.R. = HOSE REEL = 消防喉轆

KIT. = KITCHEN = 廚房

LAV. = LAVATORY = 洗手間

LIV / DIN = LIVING ROOM / DINING ROOM = 客廳 / 飯廳

M.B. = MASTER BATHROOM = 主人浴室

M.B.R. = MASTER BEDROOM = 主人睡房

P.D. = PIPE DUCT = 管道

P. RM = POWDER ROOM = 化妝間

RS & MRR = REFUSE STORAGE & MATERIAL RECOVERY ROOM = 垃圾及物料回收房

T.R.S. = TEMPORARY REFUGE SPACE = 臨時庇護處

U.P. = UTILITY PLATFORM = 工作平台

W.M.C. = WATER METER CABINET = 水錶櫃