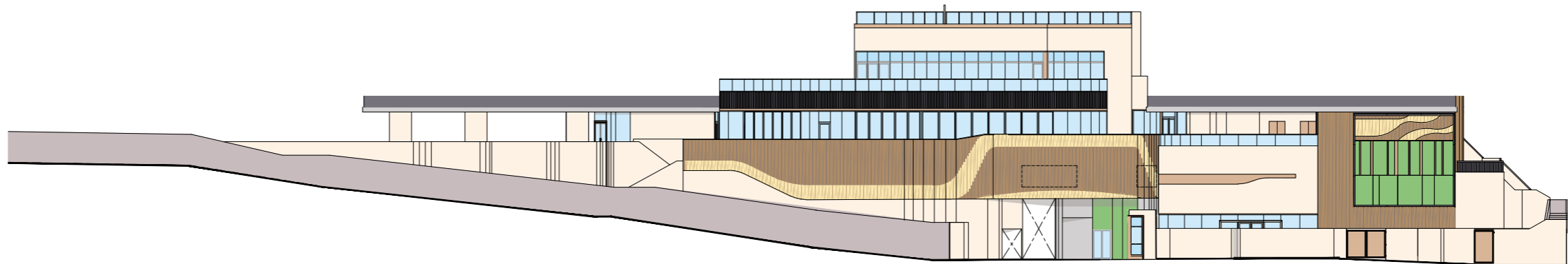
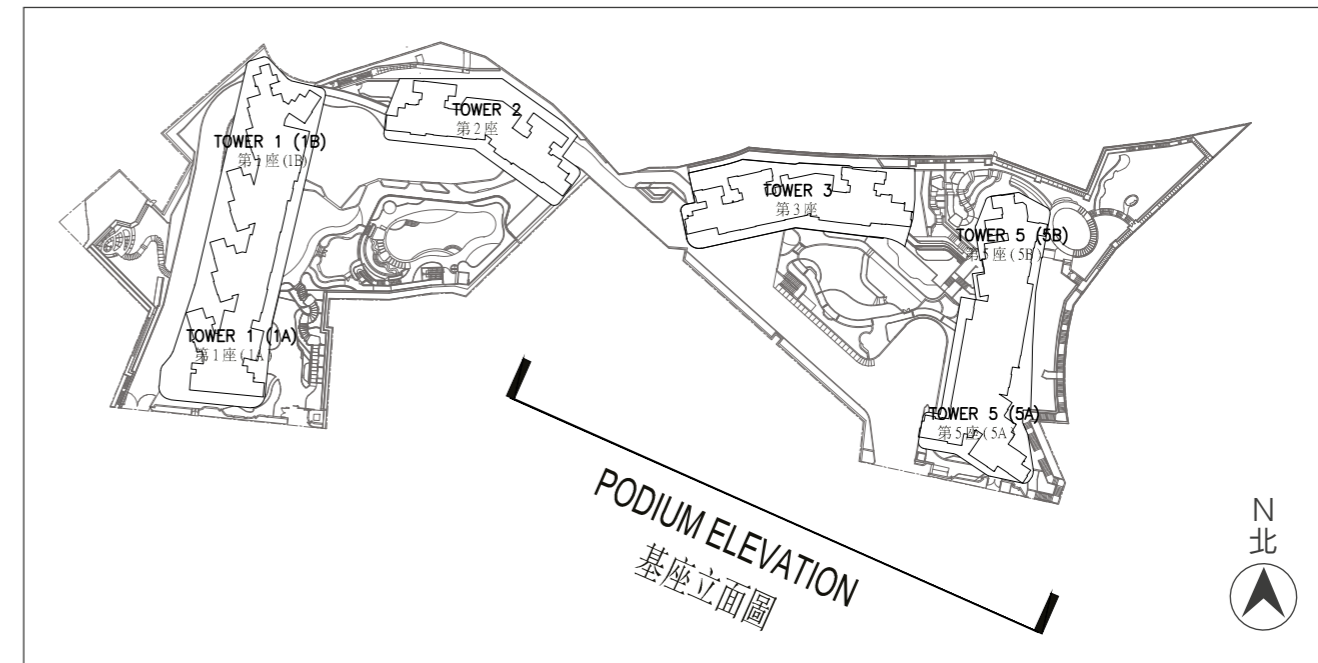
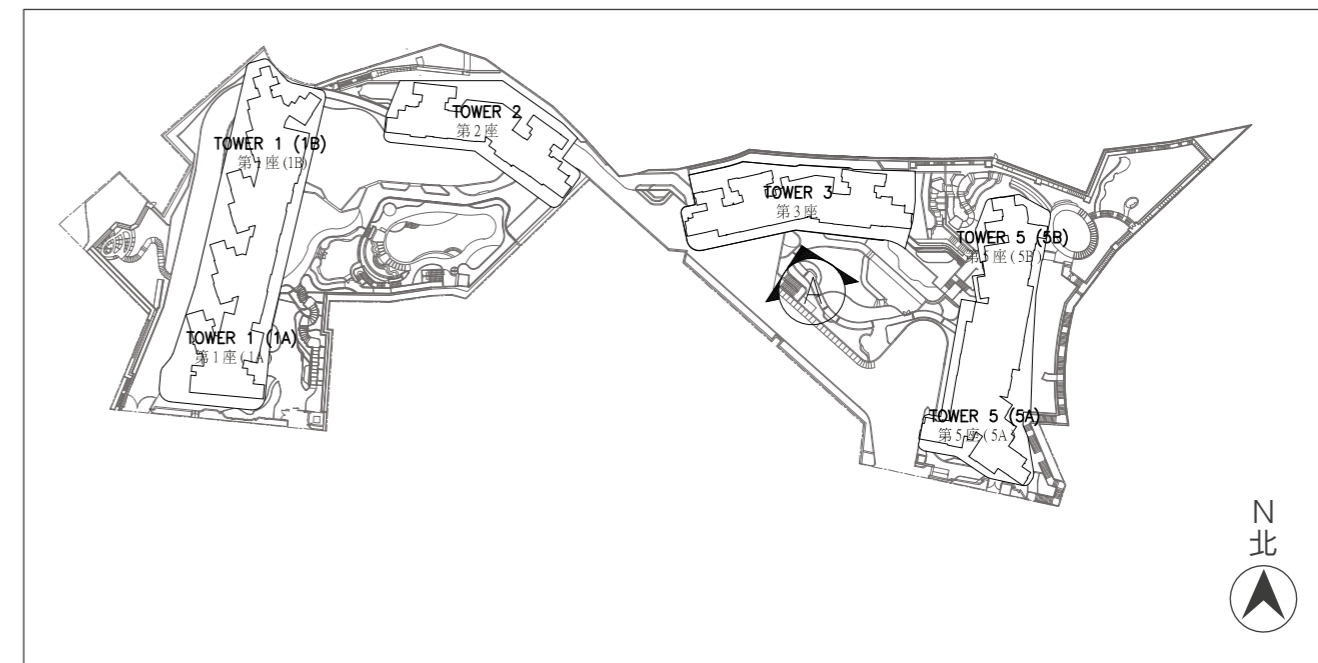
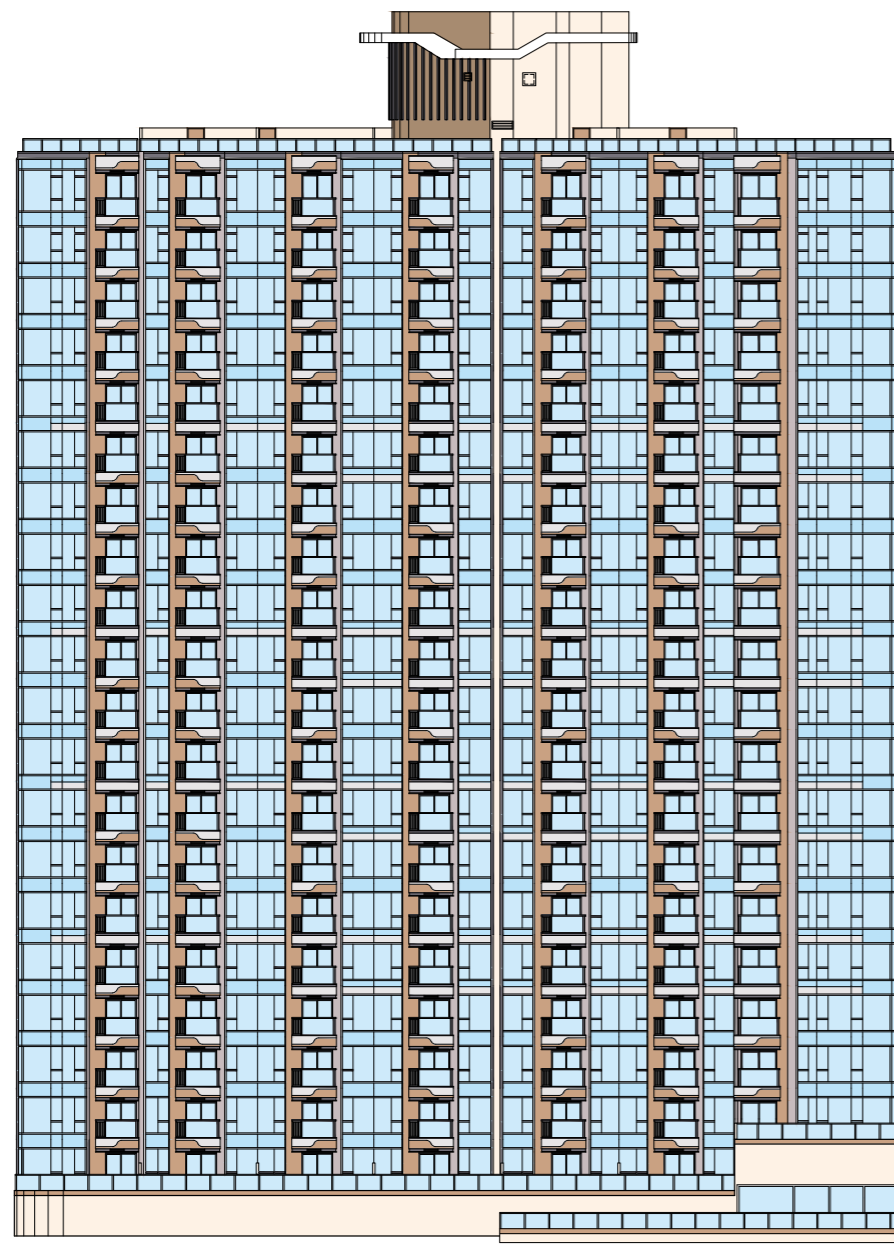


PODIUM ELEVATION
基座立面圖



The Authorized Person for the Phase has certified that the elevations shown on these plans:
 1. are prepared on the basis of the approved building plans for the Phase as of 8 April 2024; and
 2. are in general accordance with the outward appearance of the Phase.

期數的認可人士已證明本圖所顯示的立面：
 1. 以2024年4月8日的情況為準的期數經批准的建築圖則為基礎擬備；及
 2. 大致上與該期數的外觀一致。

ELEVATION A (TOWER 3)
立面圖 A (第3座)

The Authorized Person for the Phase has certified that the elevations shown on these plans:
 1. are prepared on the basis of the approved building plans for the Phase as of 8 April 2024; and
 2. are in general accordance with the outward appearance of the Phase.

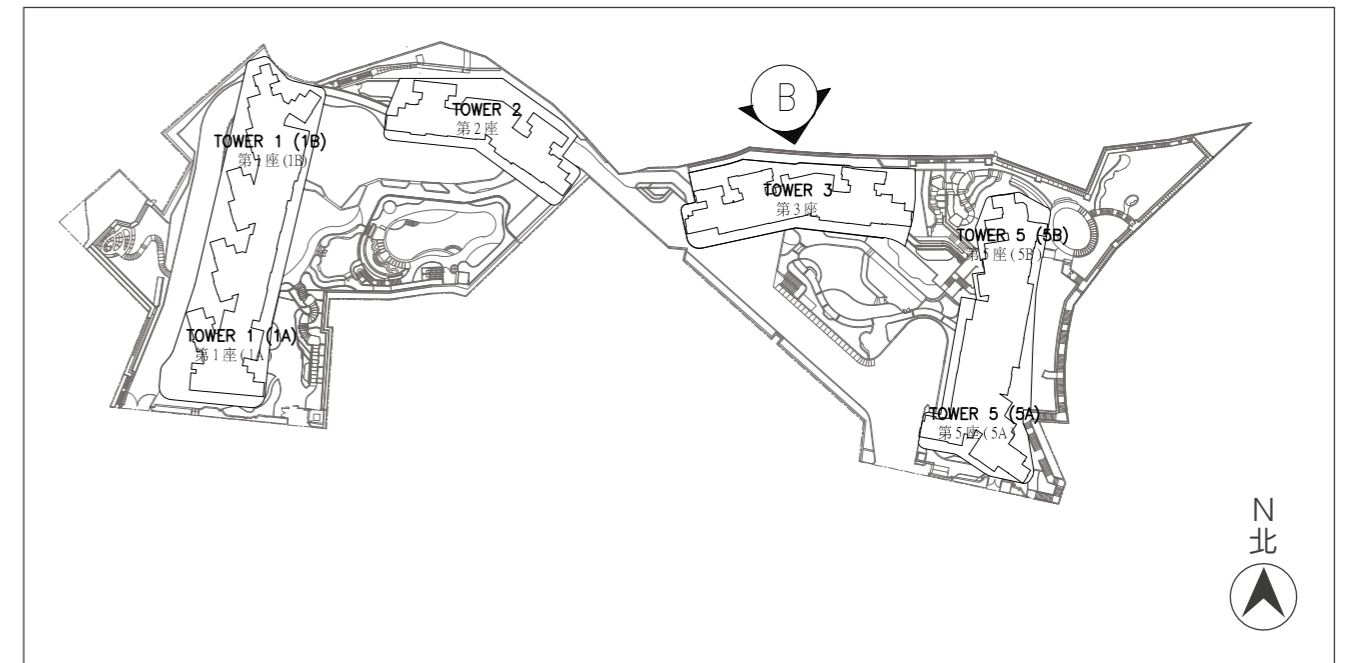
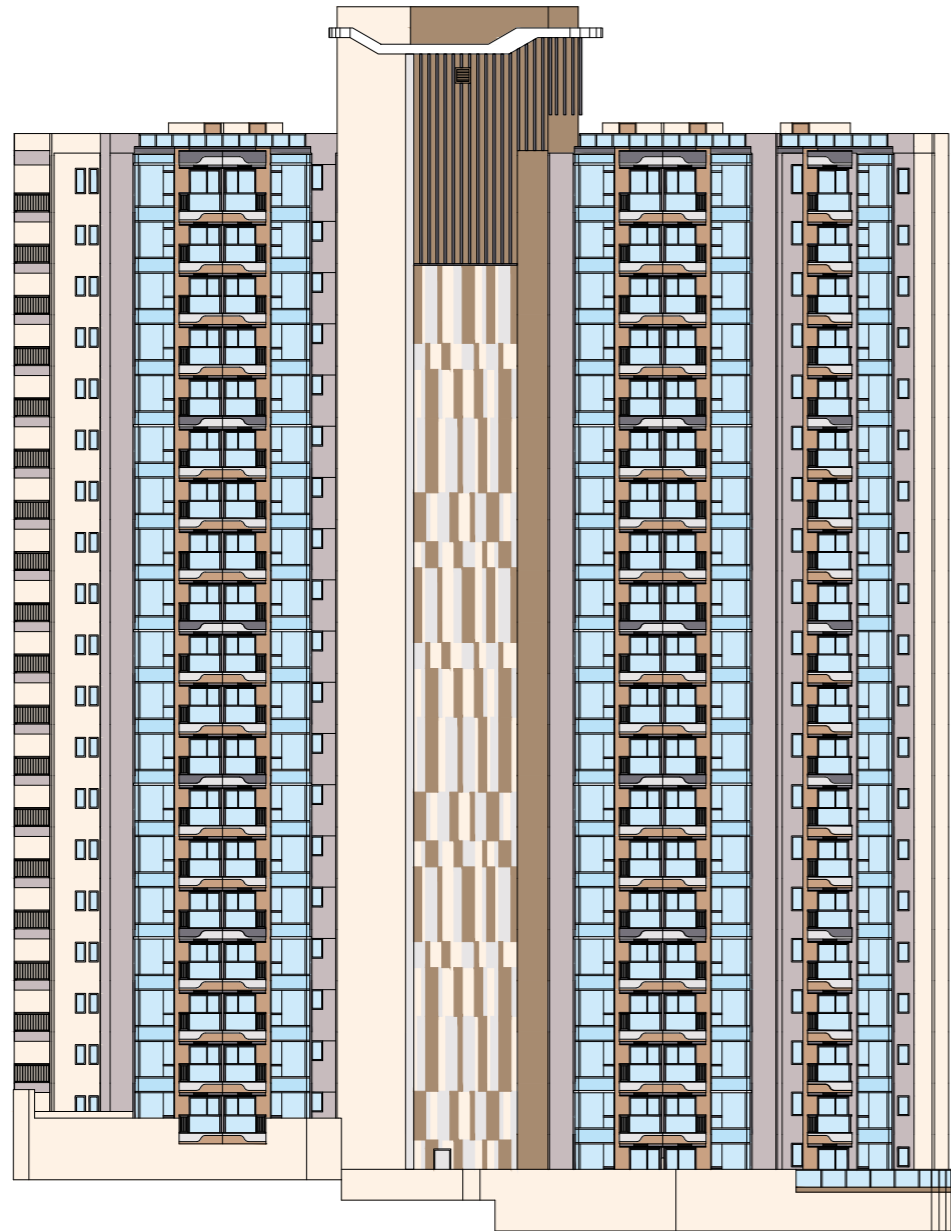
Note: 4/F, 13/F, 14/F and 24/F are omitted.

期數的認可人士已證明本圖所顯示的立面：

1. 以2024年4月8日的情況為準的期數批准的建築圖則為基礎擬備；及
2. 大致上與期數的外觀一致。

備註：不設4樓、13樓、14樓及24樓。

ELEVATION B (TOWER 3)
立面圖 B (第3座)



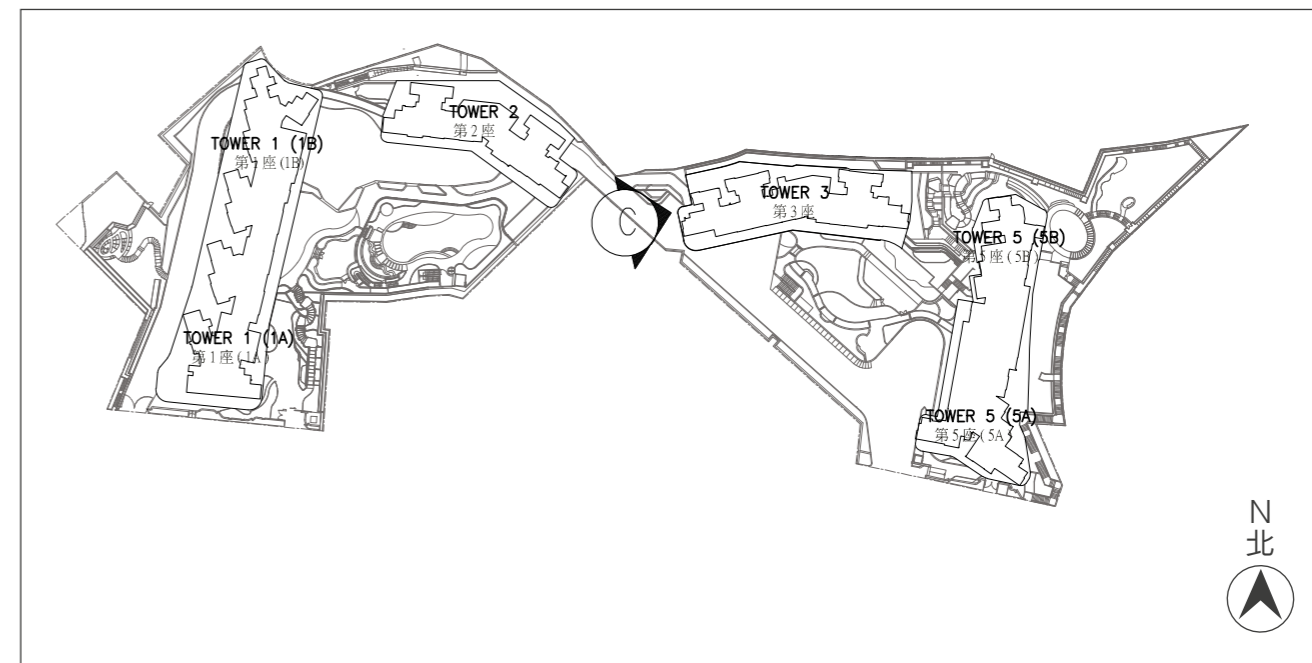
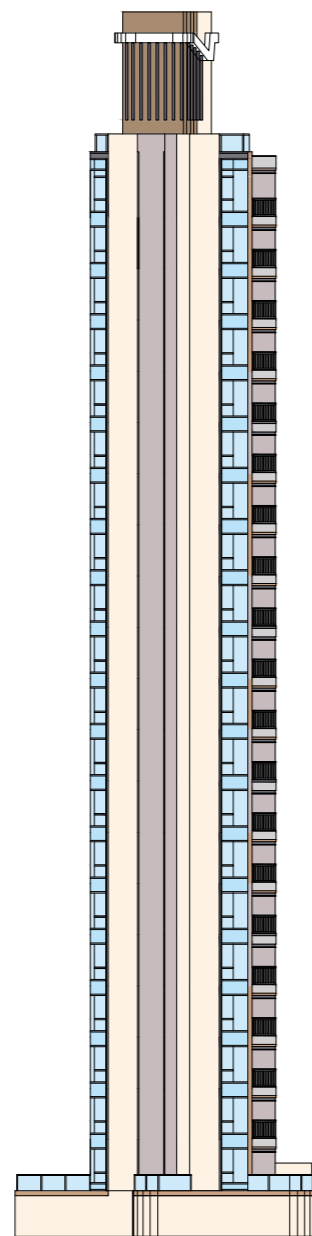
The Authorized Person for the Phase has certified that the elevations shown on these plans:
1. are prepared on the basis of the approved building plans for the Phase as of 8 April 2024; and
2. are in general accordance with the outward appearance of the Phase.

Note: 4/F, 13/F, 14/F and 24/F are omitted.

期數的認可人士已證明本圖所顯示的立面：

1. 以2024年4月8日的情況為準的期數批准的建築圖則為基礎擬備；及
2. 大致上與期數的外觀一致。

備註：不設4樓、13樓、14樓及24樓。

ELEVATION C (TOWER 3)
立面圖 C (第3座)

The Authorized Person for the Phase has certified that the elevations shown on these plans:
 1. are prepared on the basis of the approved building plans for the Phase as of 8 April 2024; and
 2. are in general accordance with the outward appearance of the Phase.

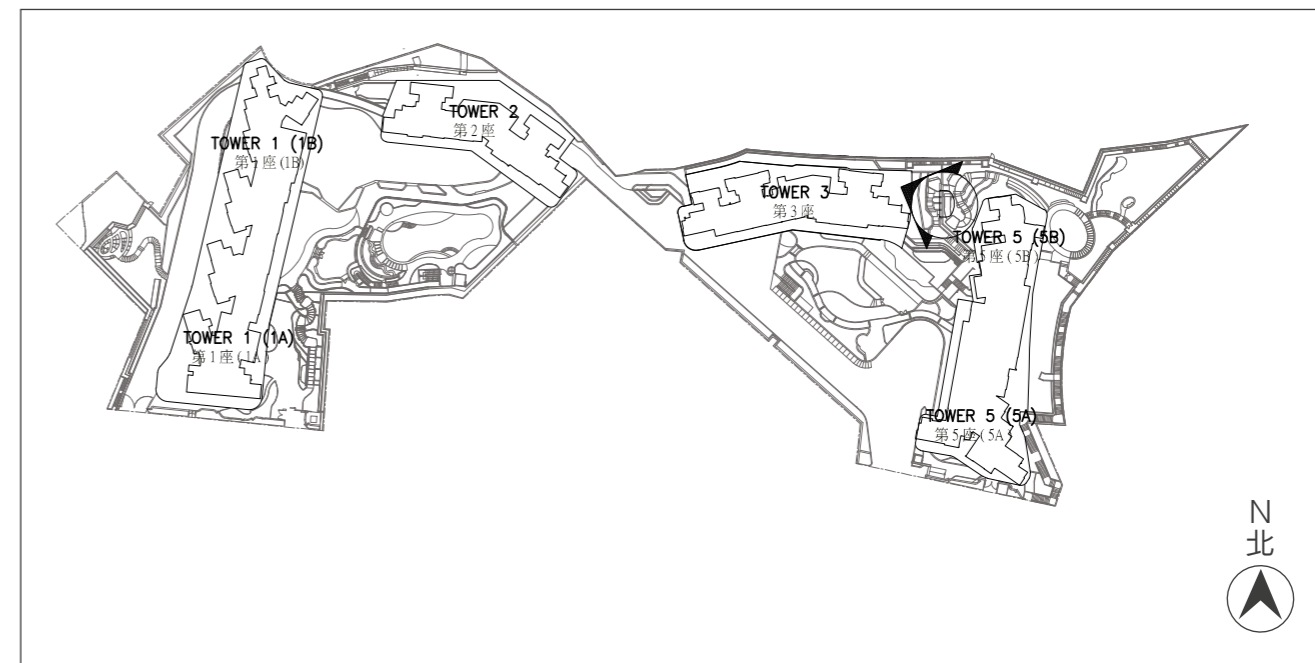
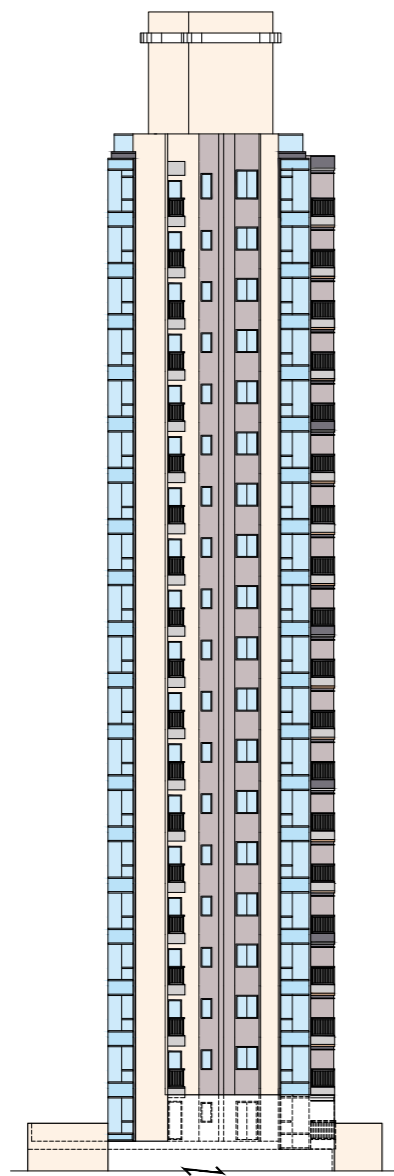
Note: 4/F, 13/F, 14/F and 24/F are omitted.

期數的認可人士已證明本圖所顯示的立面：

1. 以2024年4月8日的情況為準的期數批准的建築圖則為基礎擬備；及
2. 大致上與期數的外觀一致。

備註：不設4樓、13樓、14樓及24樓。

ELEVATION D (TOWER 3)
立面圖 D (第3座)



The Authorized Person for the Phase has certified that the elevations shown on these plans:
1. are prepared on the basis of the approved building plans for the Phase as of 8 April 2024; and
2. are in general accordance with the outward appearance of the Phase.

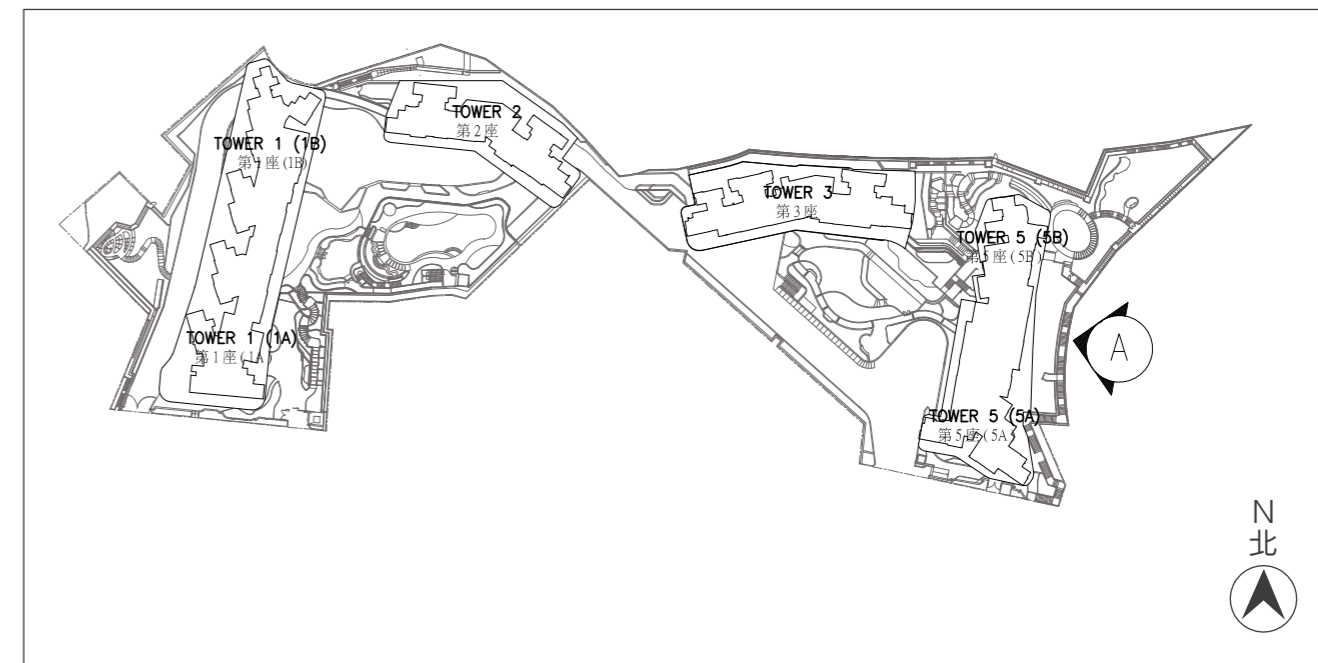
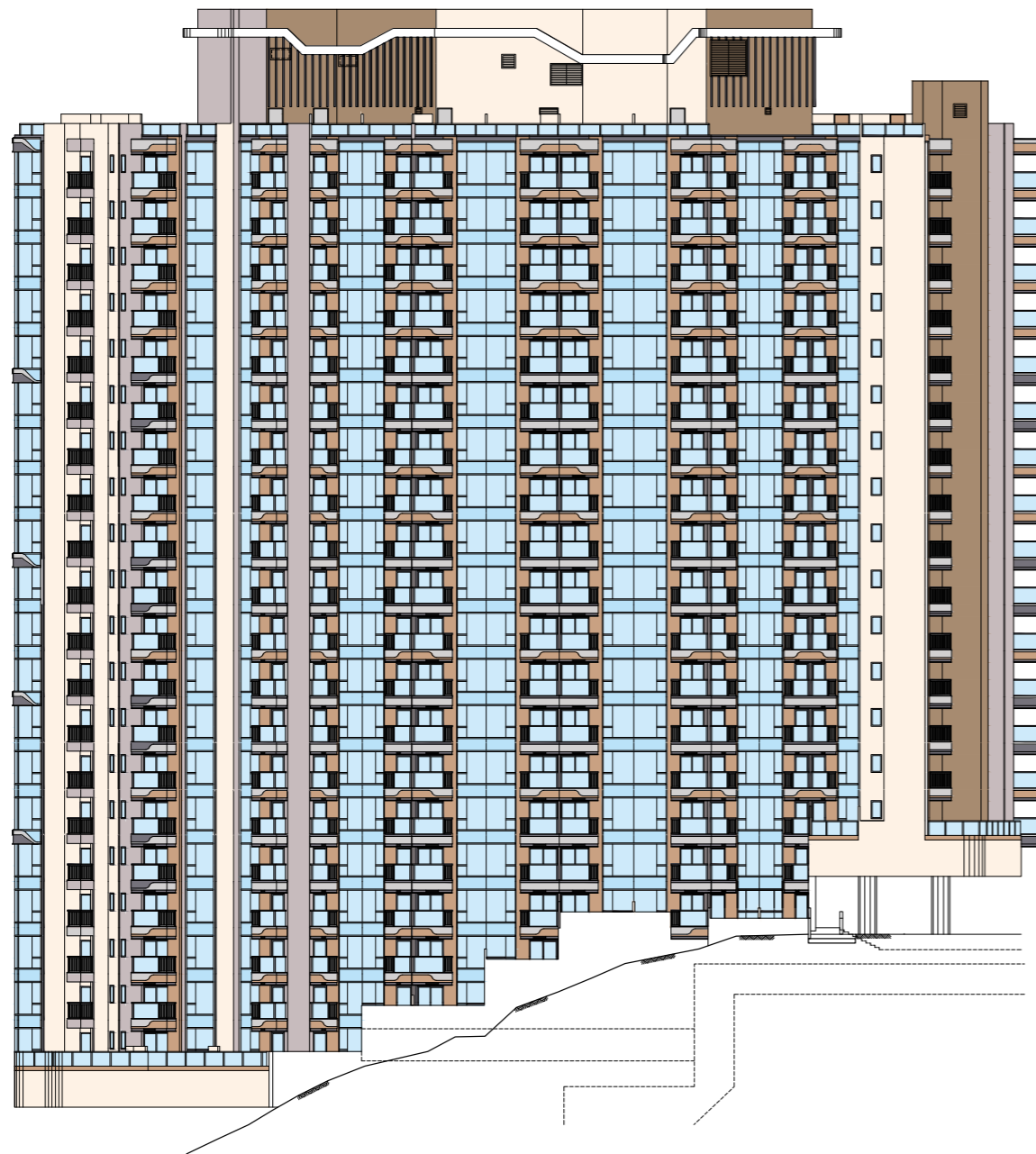
Note: 4/F, 13/F, 14/F and 24/F are omitted.

期數的認可人士已證明本圖所顯示的立面：

1. 以2024年4月8日的情況為準的期數批准的建築圖則為基礎擬備；及
2. 大致上與期數的外觀一致。

備註：不設4樓、13樓、14樓及24樓。

ELEVATION A (TOWER 5 (5A & 5B))
立面圖 A (第5座 (5A 及 5B))



The Authorized Person for the Phase has certified that the elevations shown on these plans:
1. are prepared on the basis of the approved building plans for the Phase as of 8 April 2024; and
2. are in general accordance with the outward appearance of the Phase.

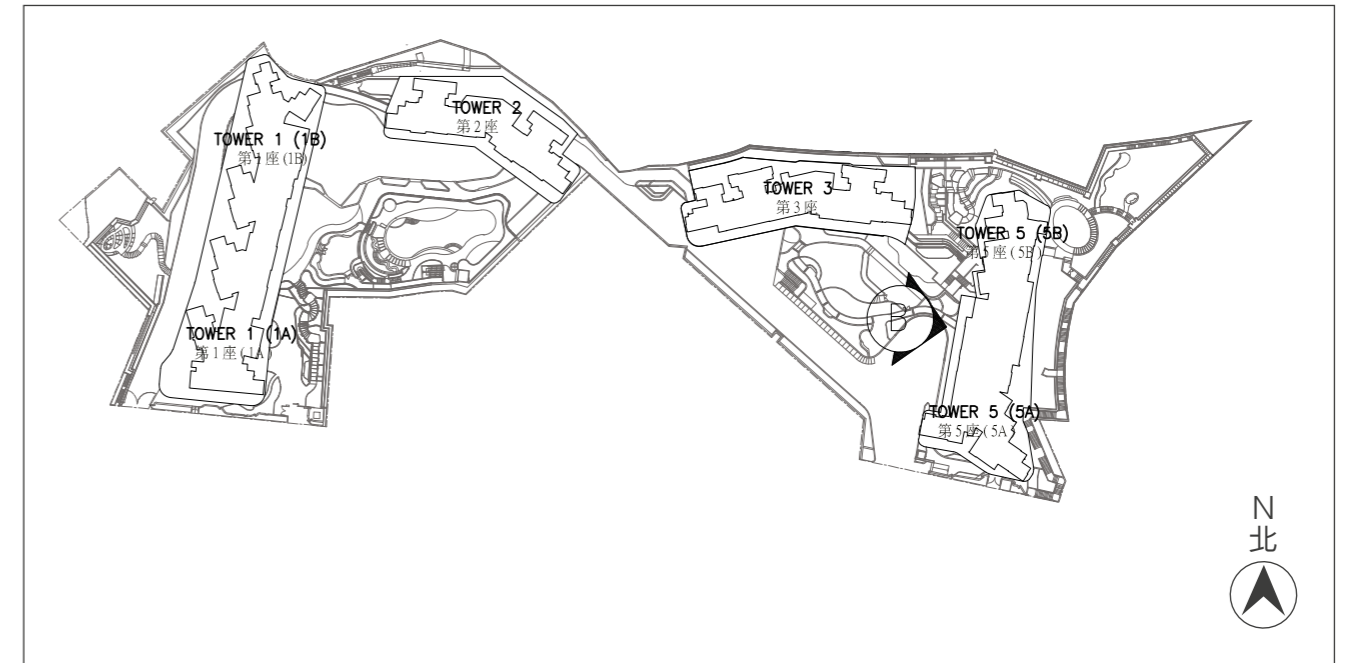
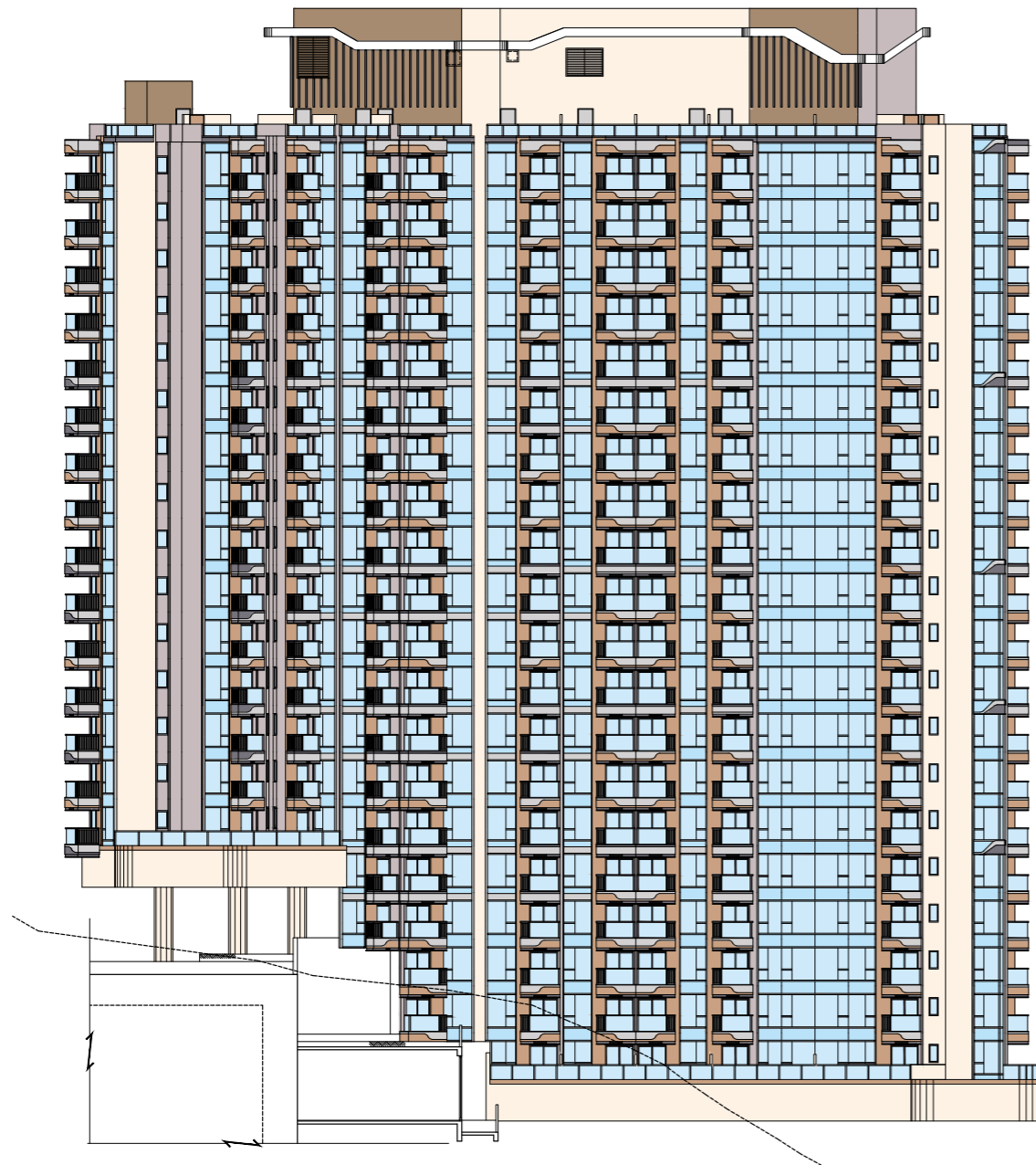
Note: 4/F, 13/F, 14/F and 24/F are omitted.

期數的認可人士已證明本圖所顯示的立面：

1. 以2024年4月8日的情況為準的期數批准的建築圖則為基礎擬備；及
2. 大致上與期數的外觀一致。

備註：不設4樓、13樓、14樓及24樓。

ELEVATION B (TOWER 5 (5A & 5B))
立面圖 B (第5座 (5A 及 5B))



The Authorized Person for the Phase has certified that the elevations shown on these plans:
1. are prepared on the basis of the approved building plans for the Phase as of 8 April 2024; and
2. are in general accordance with the outward appearance of the Phase.

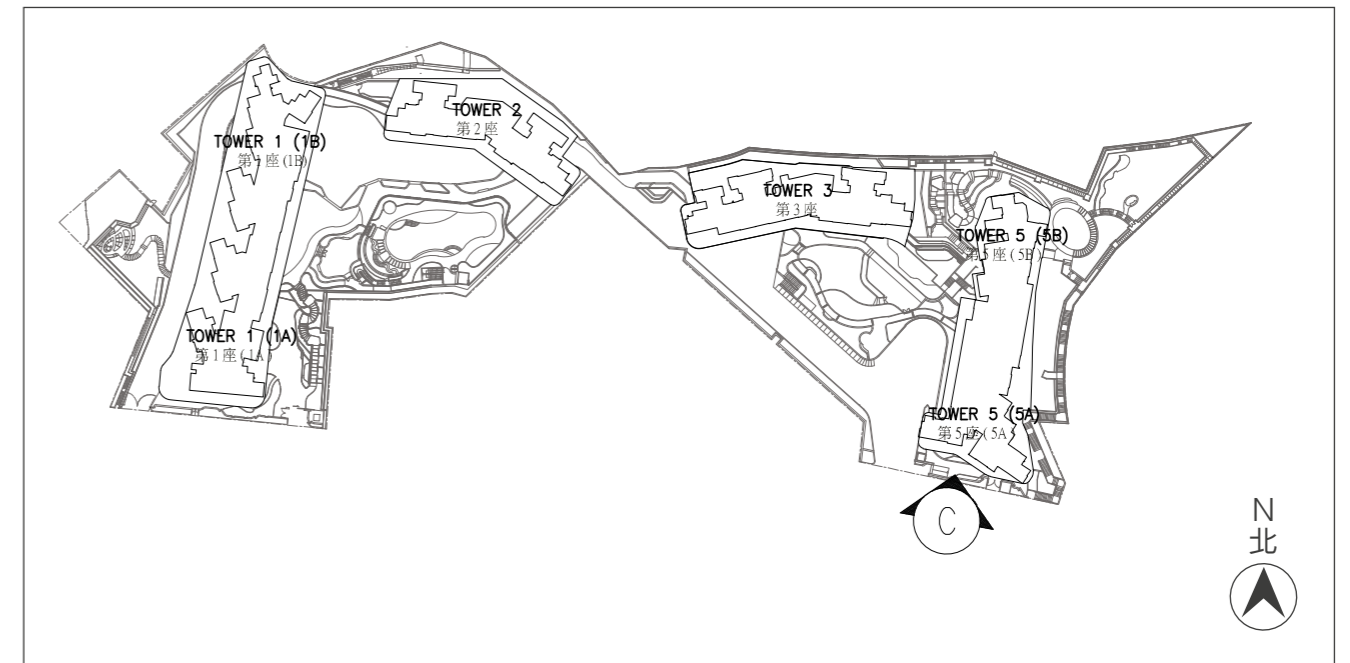
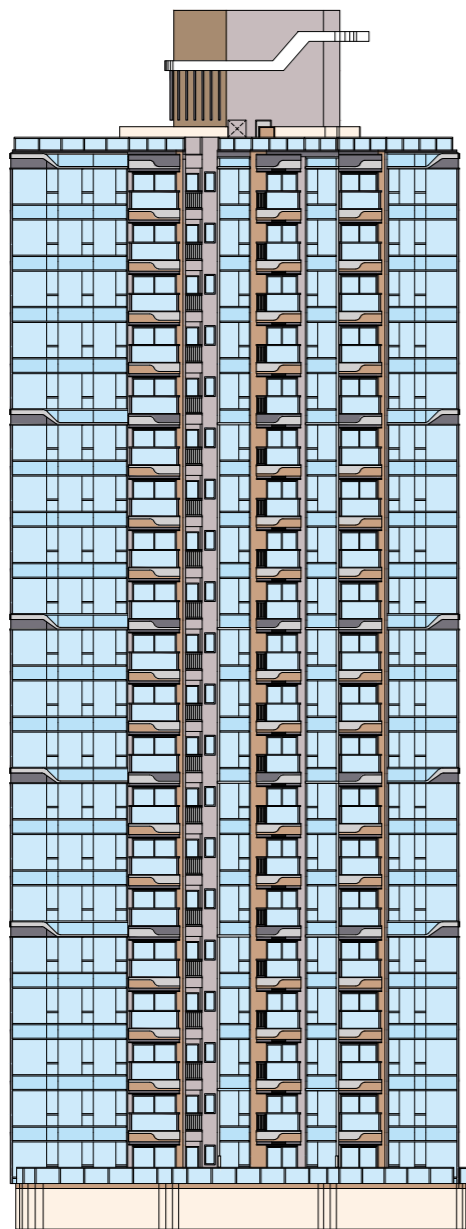
Note: 4/F, 13/F, 14/F and 24/F are omitted.

期數的認可人士已證明本圖所顯示的立面：

1. 以2024年4月8日的情況為準的期數批准的建築圖則為基礎擬備；及
2. 大致上與期數的外觀一致。

備註：不設4樓、13樓、14樓及24樓。

ELEVATION C (TOWER 5 (5A & 5B))
立面圖 C (第5座 (5A 及 5B))



The Authorized Person for the Phase has certified that the elevations shown on these plans:
1. are prepared on the basis of the approved building plans for the Phase as of 8 April 2024; and
2. are in general accordance with the outward appearance of the Phase.

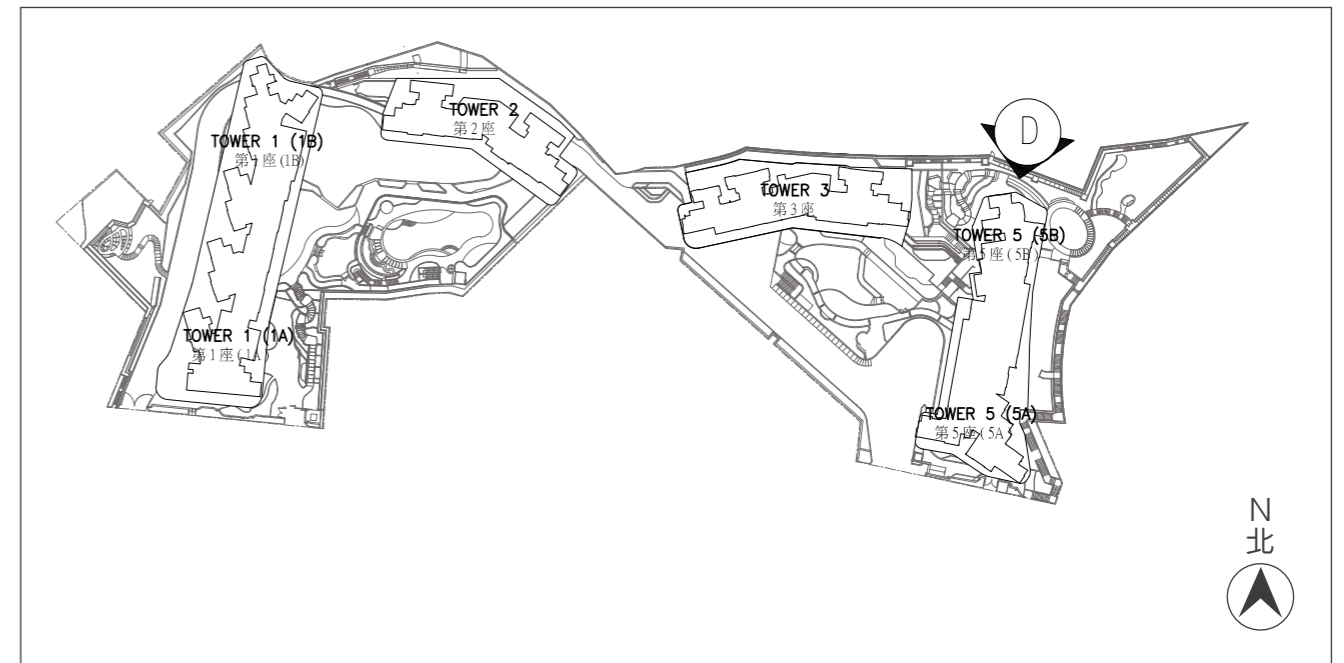
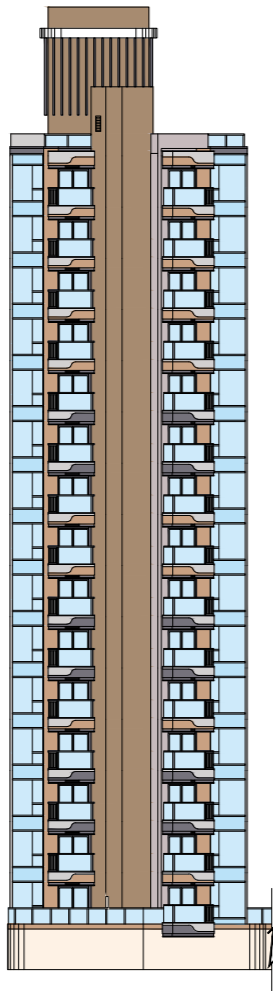
Note: 4/F, 13/F, 14/F and 24/F are omitted.

期數的認可人士已證明本圖所顯示的立面：

1. 以2024年4月8日的情況為準的期數批准的建築圖則為基礎擬備；及
2. 大致上與期數的外觀一致。

備註：不設4樓、13樓、14樓及24樓。

ELEVATION D (TOWER 5 (5A & 5B))
立面圖 D (第5座 (5A 及 5B))



The Authorized Person for the Phase has certified that the elevations shown on these plans:
1. are prepared on the basis of the approved building plans for the Phase as of 8 April 2024; and
2. are in general accordance with the outward appearance of the Phase.

Note: 4/F, 13/F, 14/F and 24/F are omitted.

期數的認可人士已證明本圖所顯示的立面：

1. 以2024年4月8日的情況為準的期數批准的建築圖則為基礎擬備；及
2. 大致上與期數的外觀一致。

備註：不設4樓、13樓、14樓及24樓。