



FLOOR PLANS OF RESIDENTIAL PROPERTIES IN THE DEVELOPMENT

發展項目的住宅物業的樓面平面圖

Legend of Terms and Abbreviations used on Floor Plans:

樓面平面圖中所使用名詞及簡稱之圖例：

1100mm H Metal Railing	=	1100毫米(高)金屬欄河	1100mm (Height) Metal Railing
1250mm H Glass Balustrade	=	1250毫米(高)玻璃欄河	1250mm (Height) Glass Balustrade
1100mm H Fence Wall	=	1100毫米(高)分隔牆	1100mm (Height) Fence Wall
1500mm H Fence Wall	=	1500毫米(高)分隔牆	1500mm (Height) Fence Wall
1800mm H Fence Wall	=	1800毫米(高)分隔牆	1800mm (Height) Fence Wall
A/C P.	=	空調機平台	Air-Conditioner Platform
A/C Plinth	=	空調機機台	Air-Conditioner Plinth
A/C Plinth (Unit B)	=	B單位空調機機台	Air-Conditioner Plinth for Unit B
A/C Plinth (Unit C)	=	C單位空調機機台	Air-Conditioner Plinth for Unit C
A/C Plinth (Unit D)	=	D單位空調機機台	Air-Conditioner Plinth for Unit D
A.F.	=	建築裝飾	Architectural Feature
Bal.	=	露台	Balcony
Bal. Above	=	上層露台	Balcony Above
Bal. / U.P.	=	露台 / 工作平台	Balcony / Utility Platform
Bal./ U.P. Above	=	露台 / 工作平台置上	Balcony / Utility Platform above
Bath.	=	浴室	Bathroom
B.R. 1	=	睡房	Bedroom 1
B.R. 2	=	睡房	Bedroom 2
Common Flat Roof	=	公共平台	
Concrete Plinth For Washer Dryer	=	洗衣乾衣機機台	
DN	=	下	Down
Electrical Cabinet	=	電線櫃	
E.M.R.	=	電錶房	Electrical Meter Room
E.V.D.	=	特低壓電管道	Extra-Low Voltage Duct
Ext. P.D.	=	室外管槽	External Pipe Duct
H.R.	=	消防喉轆	Hose Reel
Lift	=	升降機	
Lift Lobby	=	升降機大堂	
Lift Overrun	=	升降機槽	
Liv. / Din.	=	客廳 / 飯廳	Living Room / Dining Room
Open Kit.	=	開放式廚房	Open Kitchen
Pipework Enclosure	=	管道罩	
Private Flat Roof for Unit A	=	A單位私人平台	
Private Flat Roof for Unit B	=	B單位私人平台	
Private Flat Roof for Unit C	=	C單位私人平台	
Private Flat Roof for Unit D	=	D單位私人平台	
Private Flat Roof for Unit E	=	E單位私人平台	
Private Flat Roof for Unit F	=	F單位私人平台	
Private Flat Roof for Unit G	=	G單位私人平台	
Private Flat Roof for Unit H	=	H單位私人平台	
Private Flat Roof for Unit J	=	J單位私人平台	
Private Flat Roof for Unit K	=	K單位私人平台	
Private Roof (For 28/F Unit A)	=	私人天台(28樓A單位)	
Private Roof (For 28/F Unit B)	=	私人天台(28樓B單位)	
Private Roof (For 28/F Unit C)	=	私人天台(28樓C單位)	
Private Roof (For 28/F Unit D)	=	私人天台(28樓D單位)	
Private Roof (For 28/F Unit E)	=	私人天台(28樓E單位)	
Private Roof (For 28/F Unit F)	=	私人天台(28樓F單位)	
Private Roof (For 28/F Unit G)	=	私人天台(28樓G單位)	
Private Roof (For 28/F Unit H)	=	私人天台(28樓H單位)	

Private Roof (For 28/F Unit J)	=	私人天台(28樓J單位)	
Private Roof (For 28/F Unit K)	=	私人天台(28樓K單位)	
P.D.	=	管槽	Pipe Duct
Potable & Flushing Pump Room	=	食水及沖廁水泵房	
Ramp Up	=	上斜	
R.S.M.R.R.	=	垃圾及物料回收室	Refuse Storage and Material Recovery Room
Top of Bal.	=	露台上蓋	Top of Balcony
UP	=	上	Up
W.M.R.	=	水錶房	Water Meter Room
	=	隨樓附送之嵌入式裝置	Built-in fittings provided in the units
	=	隨樓附送之嵌入式裝置 (供安裝洗衣乾衣機)	Built-in fittings provided in the units (for Washer Dryer installation)

Notes:

- Common pipes exposed or enclosed in cladding may be located at/adjacent to the balcony, utility platform, air conditioning platform, flat roof, roof or external wall of some residential properties.
- There may be sunken slabs at some parts of the ceiling inside some residential properties for the installation of mechanical and electrical services of the floor above or due to the structural, architectural and/or decoration design requirements of the floor above.
- There may be ceiling bulkheads or false ceiling inside some residential properties for the installation of air-conditioning conduits and/or other mechanical and electrical services.
- The outdoor unit of air-conditioning for some residential properties are placed on the designated air-conditioning platforms or flat roof. Such outdoor unit of air-conditioning may create heat and/or noise.
- Those icons of fittings and appliances shown on the floor plans of residential properties like wash basins, water closets, shower cubicles, sink units, cabinets (if any) etc. are prepared in accordance with the latest approved building plans. Their shapes, dimensions, scales may be different from the fittings and appliances actually provided and they are for indication and reference only.
- Balconies and utility platforms are non-enclosed areas.
- The internal ceiling height within some residential properties may vary due to structural, architectural and/or decoration design variations.
- There are curtain walls and/or non-structural prefabricated external walls in some/all the residential properties. The saleable area of a residential property has included the area of curtain walls and/or non-structural prefabricated external walls and is measured from the exterior of such curtain walls and/or non-structural prefabricated external walls.

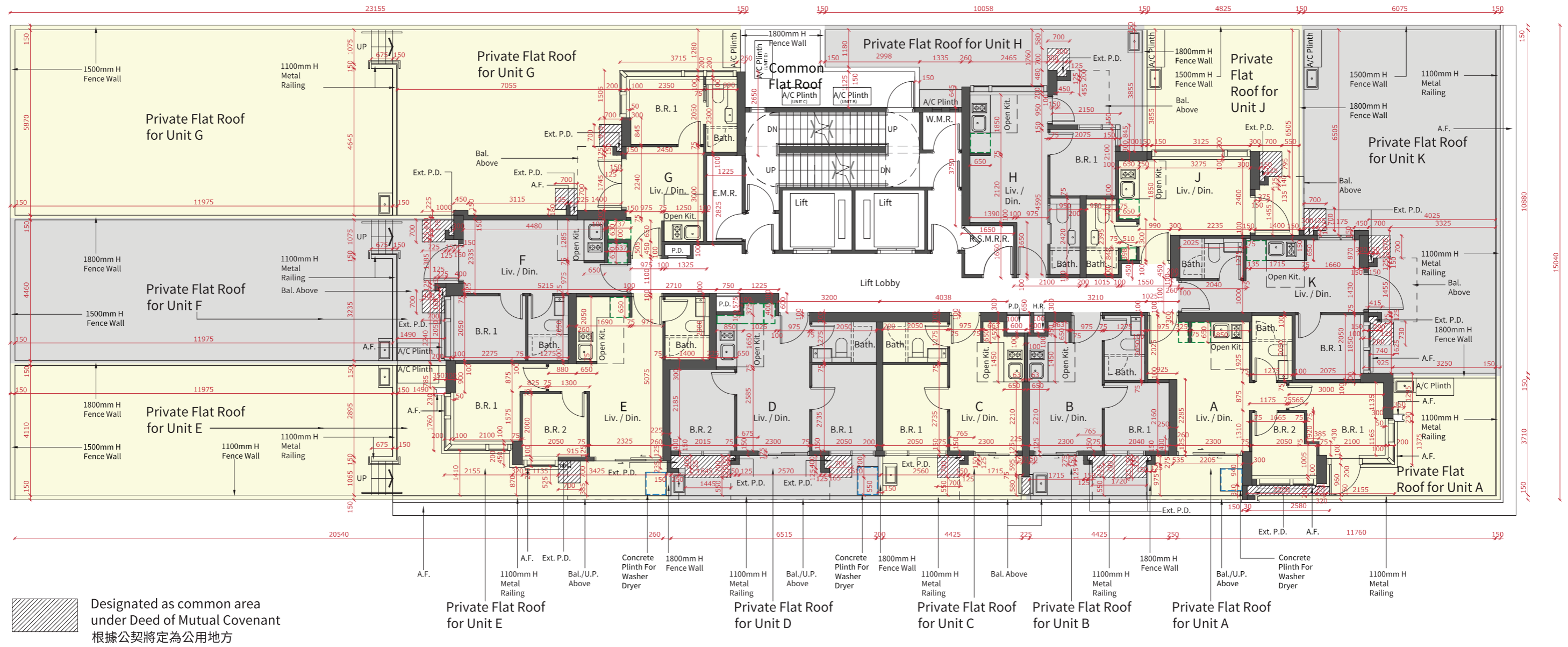
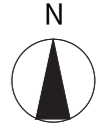
備註:

- 部分住宅物業的露台、工作平台、空調機平台、平台、天台或外牆上/附近或設有外露之公用喉管，或外牆裝飾板內藏之公用喉管。
- 部分住宅物業內之部分天花或有跌級樓板，用以安裝上層之機電設備或配合上層之結構、建築設計及/或裝修設計上的需要。
- 部分住宅物業內或設有假陣或假天花用以安裝空調喉管及/或其他機電設備。
- 部分住宅物業的空調機之室外機放置於指定的空調機平台或平台。該等空調機之室外機可能發出熱力及/或聲音。
- 各住宅物業的樓面平面圖內所展示之裝置及設備的圖標如洗面盆、座廁、淋浴間、洗滌盆、櫃(如有)等乃根據最新經批准的建築圖則擬備，其形狀、尺寸、比例或與實際提供的裝置及設備存在差異，僅供示意及參考之用。
- 露台及工作平台為不可封閉的地方。
- 部分住宅物業之天花高度將會因應結構、建築設計及/或裝修設計上的需要有所差異。
- 部份/全部住宅物業有幕牆及/或非結構的預製外牆。住宅物業之實用面積之計算包括幕牆及/或非結構的預製外牆之面積，並由幕牆及/或非結構的預製外牆之外圍起計。

FLOOR PLANS OF RESIDENTIAL PROPERTIES IN THE DEVELOPMENT

發展項目的住宅物業的樓面平面圖

2/F Floor Plan 2樓樓面平面圖



Note : The dimensions of the floor plan are all structural dimensions in millimeter.
備註 : 平面圖所列之數字為以毫米標示之建築結構尺寸。

FLOOR PLANS OF RESIDENTIAL PROPERTIES IN THE DEVELOPMENT
發展項目的住宅物業的樓面平面圖

Each of the Residential Property 每個住宅物業	Floor 樓層	Unit 單位				
		A	B	C	D	E
Thickness of the floor slabs (excluding plaster)(mm) 樓板(不包括灰泥)的厚度(毫米)	2/F 2樓	135, 150	135, 150	135, 150	135, 150	135, 150
Floor-to-floor height (mm) 層與層之間的高度(毫米)		2750, 2800, 3150, 3155	2850, 3150, 3155	2850, 3150, 3155	2850, 3150, 3155	2850, 3150, 3155
		F	G	H	J	K
Thickness of the floor slabs (excluding plaster)(mm) 樓板(不包括灰泥)的厚度(毫米)		135, 150	135, 150	135, 150	135, 150	135, 150
Floor-to-floor height (mm) 層與層之間的高度(毫米)		2800, 2850, 3150, 3155	2850, 3150, 3155	2800, 2850, 3150, 3155	2800, 2850, 3150, 3155	2750, 3150, 3155

Notes :

1. The internal areas of the residential properties on the upper floors will generally be slightly larger than those on the lower floors because of the reducing thickness of the structural walls on the upper floors.
2. Please refer to page 20 of this Sales Brochure for legend of the terms and abbreviations used on the floor plan above and the explanatory notes that are applicable thereto.

備註：

1. 因住宅物業的較高樓層的結構牆的厚度遞減，較高樓層的內部面積，一般比較低樓層的內部面積稍大。
2. 樓面平面圖中所使用名詞及簡稱之圖例及其適用的備註，請參閱本售樓說明書第20頁。

FLOOR PLANS OF RESIDENTIAL PROPERTIES IN THE DEVELOPMENT

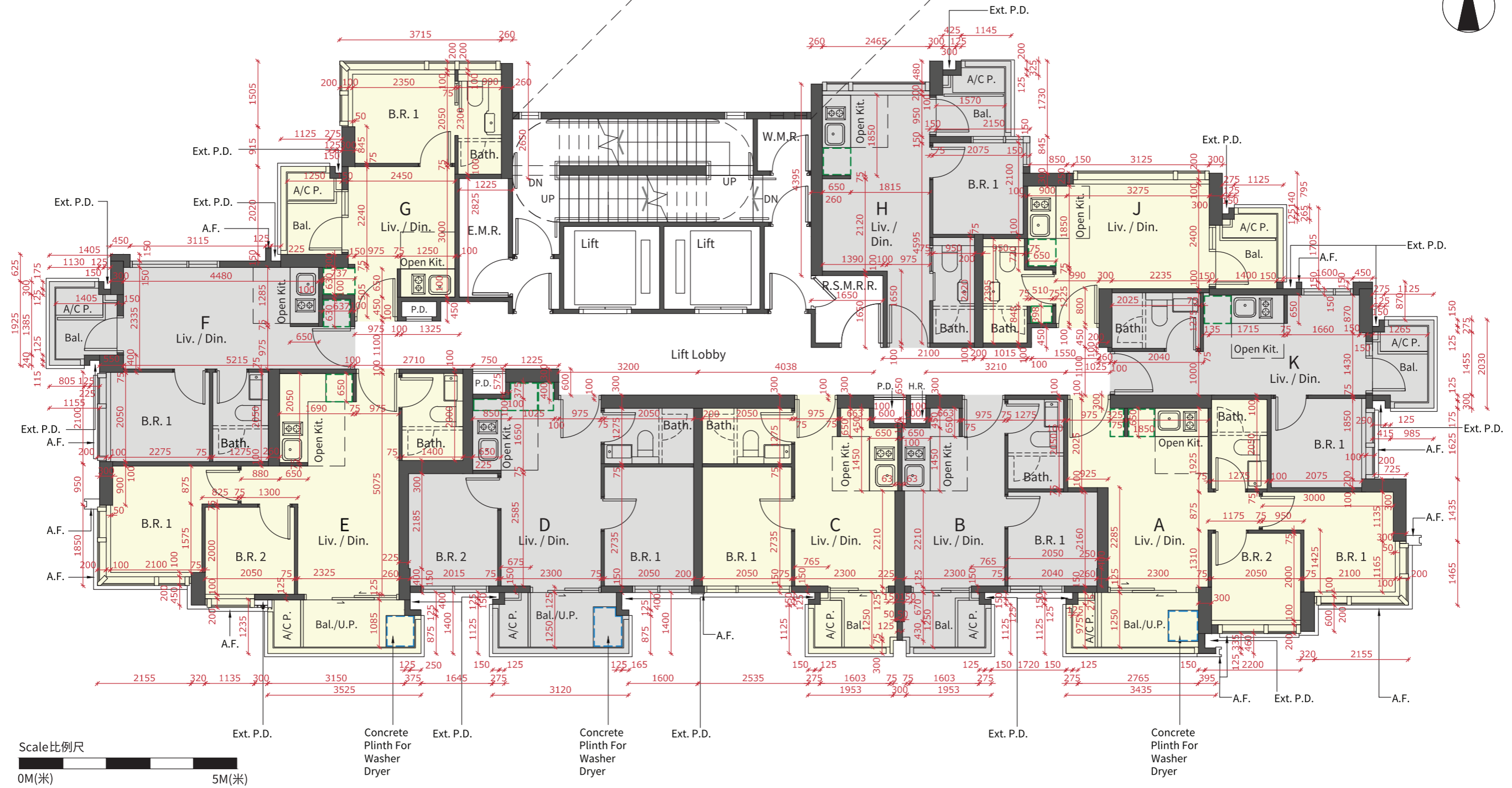
發展項目的住宅物業的樓面平面圖

3/F, 5/F-12/F, 15/F-23/F & 25/F-28/F Floor Plan

3樓、5樓至12樓、15至23樓及25至28樓樓面平面圖

Part Plan at 28/F

28樓部分平面圖



Note : The dimensions of the floor plan are all structural dimensions in millimeter.

備註 : 平面圖所列之數字為以毫米標示之建築結構尺寸。

FLOOR PLANS OF RESIDENTIAL PROPERTIES IN THE DEVELOPMENT
發展項目的住宅物業的樓面平面圖

Each of the Residential Property 每個住宅物業	Floor 樓層	Unit 單位				
		A	B	C	D	E
Thickness of the floor slabs (excluding plaster)(mm) 樓板(不包括灰泥)的厚度(毫米)	3/F, 5/F-12/F, 15/F-23/F & 25/F-27/F 3樓、5樓至12樓、 15至23樓及25至27樓	135, 150	135, 150	135, 150	135, 150	135, 150
Floor-to-floor height (mm) 層與層之間的高度(毫米)		2750, 2800, 3150	2850, 3150	2850, 3150	2850, 3150	2850, 3150
		F	G	H	J	K
Thickness of the floor slabs (excluding plaster)(mm) 樓板(不包括灰泥)的厚度(毫米)		135, 150	135, 150	135, 150	135, 150	135, 150
Floor-to-floor height (mm) 層與層之間的高度(毫米)		2800, 2850, 3150	2850, 3150	2800, 2850, 3150	2800, 2850, 3150	2750, 3150

Notes :

1. The internal areas of the residential properties on the upper floors will generally be slightly larger than those on the lower floors because of the reducing thickness of the structural walls on the upper floors.
2. Please refer to page 20 of this Sales Brochure for legend of the terms and abbreviations used on the floor plan above and the explanatory notes that are applicable thereto.
3. 4/F, 13/F, 14/F and 24/F are omitted.

備註：

1. 因住宅物業的較高樓層的結構牆的厚度遞減，較高樓層的內部面積，一般比較低樓層的內部面積稍大。
2. 樓面平面圖中所使用名詞及簡稱之圖例及其適用的備註，請參閱本售樓說明書第20頁。
3. 不設4樓、13樓、14樓及24樓。

FLOOR PLANS OF RESIDENTIAL PROPERTIES IN THE DEVELOPMENT
發展項目的住宅物業的樓面平面圖

Each of the Residential Property 每個住宅物業	Floor 樓層	Unit 單位				
		A	B	C	D	E
Thickness of the floor slabs (excluding plaster)(mm) 樓板(不包括灰泥)的厚度(毫米)	28/F 28樓	135, 150, 175	135, 175	135, 175	135, 175	135, 150, 175
Floor-to-floor height (mm) 層與層之間的高度(毫米)		4000, 4045, 4050	4000, 4045, 4050	4000, 4045, 4050	4000, 4045, 4050	4000, 4045, 4050
		F	G	H	J	K
Thickness of the floor slabs (excluding plaster)(mm) 樓板(不包括灰泥)的厚度(毫米)		135, 150	135, 150	135, 150	135, 150	135, 150
Floor-to-floor height (mm) 層與層之間的高度(毫米)		4000, 4045, 4050	4000, 4045, 4050	4000, 4045, 4050	4000, 4045, 4050	4000, 4045, 4050

Notes :

1. The internal areas of the residential properties on the upper floors will generally be slightly larger than those on the lower floors because of the reducing thickness of the structural walls on the upper floors.
2. Please refer to page 20 of this Sales Brochure for legend of the terms and abbreviations used on the floor plan above and the explanatory notes that are applicable thereto.
3. 4/F, 13/F, 14/F and 24/F are omitted.

備註：

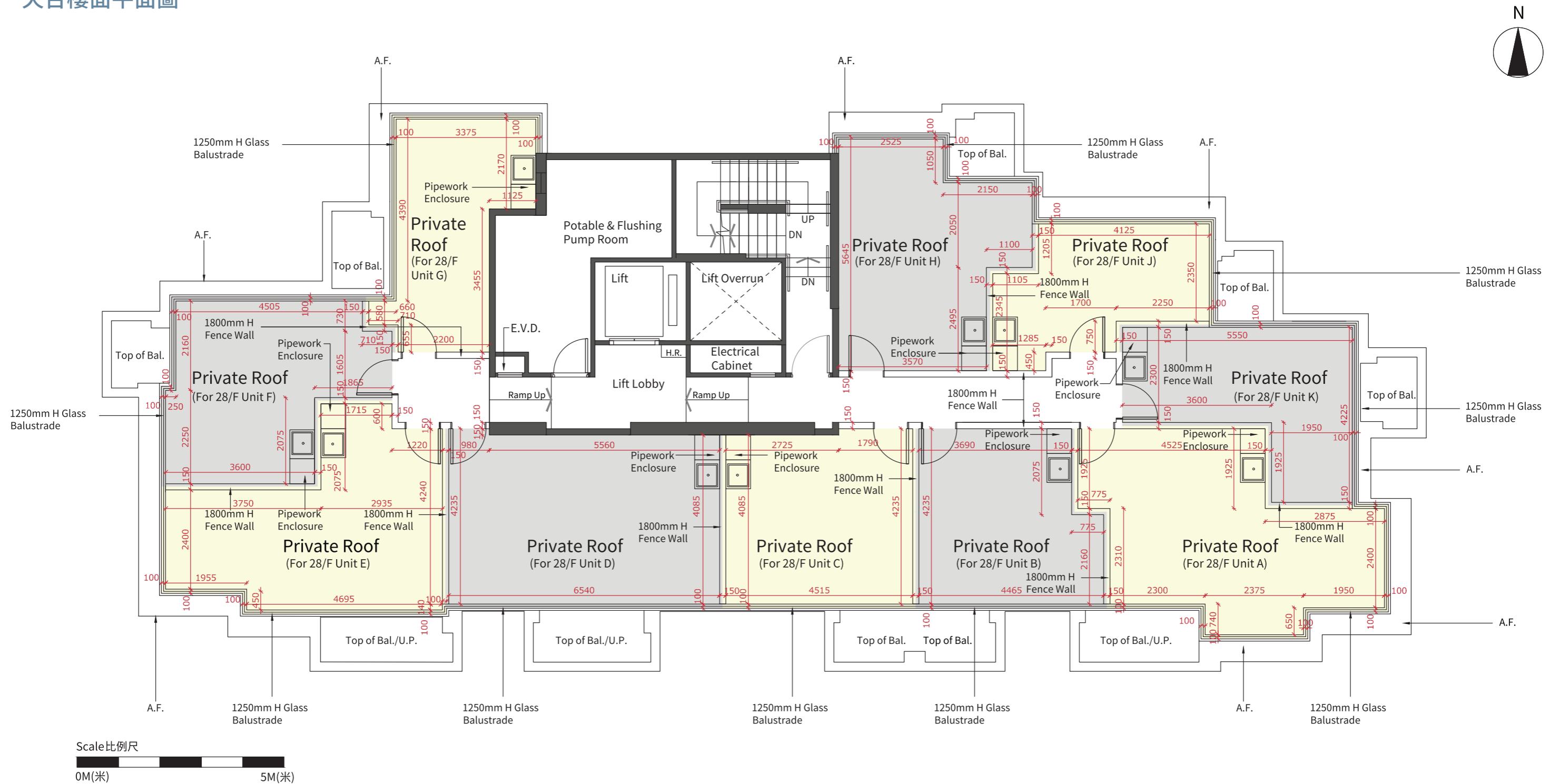
1. 因住宅物業的較高樓層的結構牆的厚度遞減，較高樓層的內部面積，一般比較低樓層的內部面積稍大。
2. 樓面平面圖中所使用名詞及簡稱之圖例及其適用的備註，請參閱本售樓說明書第20頁。
3. 不設4樓、13樓、14樓及24樓。

FLOOR PLANS OF RESIDENTIAL PROPERTIES IN THE DEVELOPMENT

發展項目的住宅物業的樓面平面圖

Roof Floor Plan

天台樓面平面圖



Notes :

1. The dimensions of the floor plan are all structural dimensions in millimeter.
2. For the location of the roof, it was specified as private flat roof in the general building plans of the Development approved by the Building Authority. In practice, it is a roof and its area is calculated under the roof.

備註 :

1. 平面圖所列之數字為以毫米標示之建築結構尺寸。
2. 有關天台的位置在該發展項目經建築事務監督批准的建築圖則上列為私人平台，其實際上為天台，其面積將以天台計算。

FLOOR PLANS OF RESIDENTIAL PROPERTIES IN THE DEVELOPMENT
發展項目的住宅物業的樓面平面圖

Each of the Residential Property 每個住宅物業	Floor 樓層	Unit 單位				
		A	B	C	D	E
Thickness of the floor slabs (excluding plaster)(mm) 樓板(不包括灰泥)的厚度(毫米)	Roof 天台	Not Applicable 不適用				
Floor-to-floor height (mm) 層與層之間的高度(毫米)		Not Applicable 不適用				
		F	G	H	J	K
Thickness of the floor slabs (excluding plaster)(mm) 樓板(不包括灰泥)的厚度(毫米)		Not Applicable 不適用				
Floor-to-floor height (mm) 層與層之間的高度(毫米)		Not Applicable 不適用				

Notes :

1. The internal areas of the residential properties on the upper floors will generally be slightly larger than those on the lower floors because of the reducing thickness of the structural walls on the upper floors.
2. Please refer to page 20 of this Sales Brochure for legend of the terms and abbreviations used on the floor plan above and the explanatory notes that are applicable thereto.

備註：

1. 因住宅物業的較高樓層的結構牆的厚度遞減，較高樓層的內部面積，一般比較低樓層的內部面積稍大。
2. 樓面平面圖中所使用名詞及簡稱之圖例及其適用的備註，請參閱本售樓說明書第20頁。