

# 11 FLOOR PLANS OF RESIDENTIAL PROPERTIES IN THE DEVELOPMENT 發展項目的住宅物業的樓面平面圖

## LEGEND FOR FLOOR PLAN 樓面平面圖圖例

AC PLATFORM FOR UNIT *	= AIR CONDITIONER PLATFORM FOR UNIT *	= *單位的冷氣機平台	LAV	= LAVATORY	= 洗手間
	ARCHITECTURAL FEATURE	= 建築裝飾		LIFT MACHINE ROOM	= 升降機機房
AC PLINTH FOR UNIT *	= AIR CONDITIONER PLINTH FOR UNIT *	= *單位的冷氣機基座	LIV & DIN	= LIVING ROOM & DINING ROOM	= 客廳及飯廳
BAL	= BALCONY	= 露台	MBA	= MASTER BATHROOM	= 主人浴室
BA	= BATHROOM	= 浴室	MBR	= MASTER BEDROOM	= 主人睡房
BA1	= BATHROOM 1	= 浴室 1	O KIT	= OPEN KITCHEN	= 開放式廚房
BA2	= BATHROOM 2	= 浴室 2	PD	= PIPE DUCT	= 管道槽
BR	= BEDROOM	= 睡房		= PRIVATE ROOF (UNIT* OF 18/F)	= 私人天台(十八樓的*單位)
BR1	= BEDROOM 1	= 睡房 1	RS&MRR	= REFUSE STORAGE & MATERIAL RECOVERY ROOM	= 垃圾及物料回收室
BR2	= BEDROOM 2	= 睡房 2			
BR3	= BEDROOM 3	= 睡房 3	STO	= STORE ROOM	= 儲物房
COVER FOR BAL	= COVER FOR BALCONY	= 露台上蓋	TOP OF CW	= TOP OF CURTAIN WALL	= 幕牆頂部
COVER FOR UP	= COVER FOR UTILITY PLATFORM	= 工作平台上蓋	TRS	= TEMPORARY REFUGE SPACE	= 臨時庇護處
CW	= CURTAIN WALL	= 幕牆	UP	= UTILITY PLATFORM	= 工作平台
DN	= DOWN	= 下	UP (DIRECTION IN STAIRCASE)	= UP (DIRECTION IN STAIRCASE)	= 上 (樓梯方向)
EMR	= ELECTRICAL METER ROOM	= 電錶房	VD	= VOID	= 中空
	EMERGENCY GENERATOR ROOM	= 應急發電機房	WMC	= WATER METER CABINET	= 水錶櫃
	FLAT ROOF	= 平台			
HR	= HOSE REEL	= 消防喉轆			
KIT	= KITCHEN	= 廚房			

Notes applicable to the floor plans of this section:

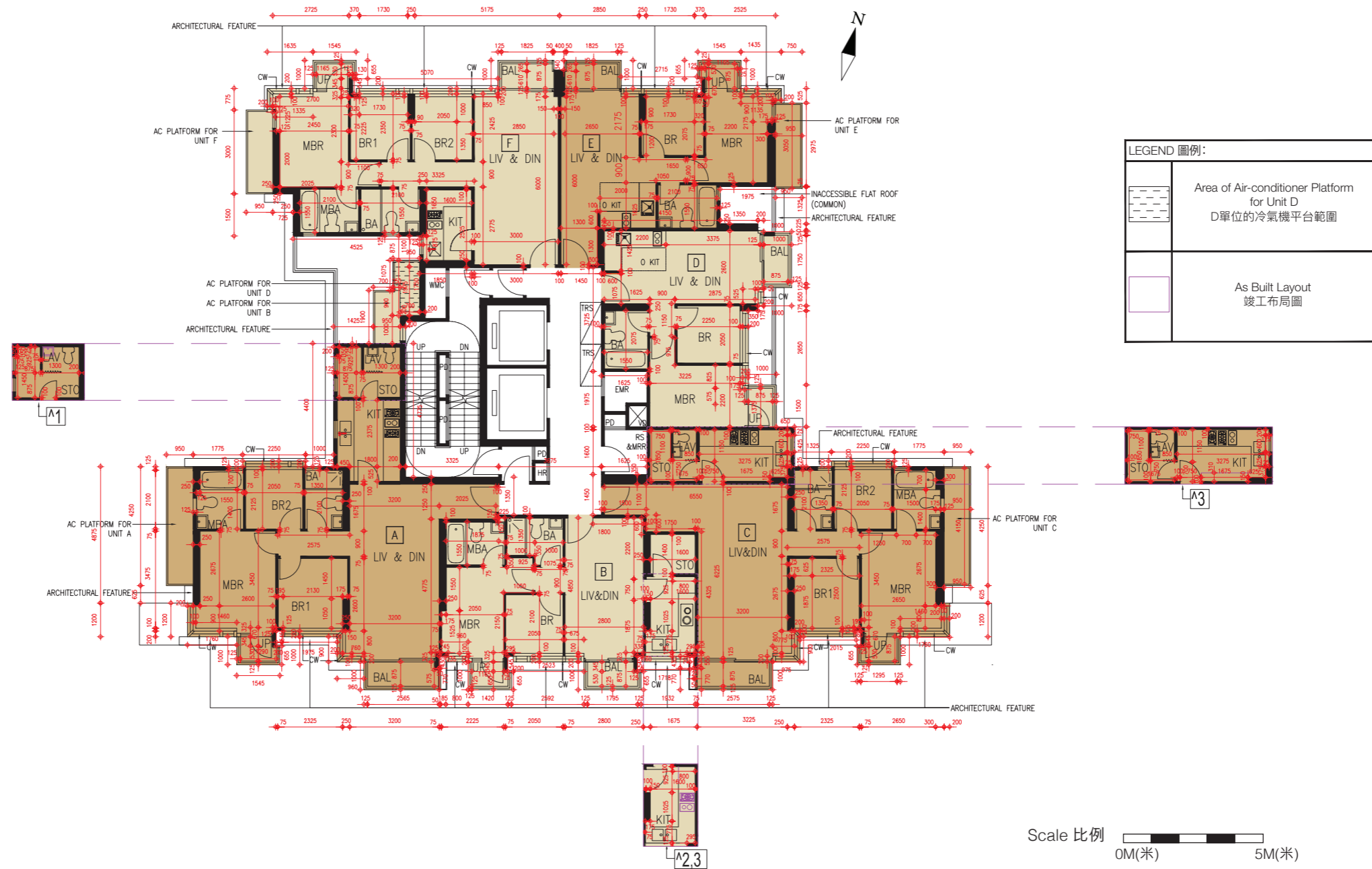
1. Common pipes exposed are located at / adjacent to the balcony and / or utility platform and / or flat roof and / or air conditioner platform and / or external wall of some residential properties. For details, please refer to the latest approved building plans and / or approved drainage plans.
2. There may be sunken slabs and / or bulkheads and / or false ceilings for the installation of mechanical and electrical services at some of the residential properties.
3. The dimensions on the floor plans are all structural dimensions in millimeter.
4. The indications of fittings such as windows, door leafs, kitchen cabinets, drain points, shower cubicles and the door leafs thereof, sinks, water closets, washbasins etc. shown on the floor plans are indications of their approximate locations only and not indications of their actual sizes, locations, designs and shapes.
5. The area and demarcation of residential properties are subject to the deed of mutual covenant and transaction documents.

適用於本節各樓面平面圖之備註：

1. 部份住宅物業的露台及/或工作平台及/或平台及/或冷氣機平台及/或外牆上/附近設有外露公用喉管。請查閱最新之批准建築圖則及/或批准排水圖則以了解詳情。
2. 部份住宅物業有跌級樓板及/或裝飾橫樑及/或假天花，以安裝機電設備。
3. 樓面平面圖所列之尺寸為以毫米標示之建築結構尺寸。
4. 樓面平面圖所示之裝置如窗、門葉、廚櫃、去水位、淋浴間及其門葉、洗滌盆、座廁、面盆等只供展示其大約位置而非展示其實際大小、位置、設計及形狀。
5. 住宅物業的範圍及邊界以公契和交易文件為準。

# 11 FLOOR PLANS OF RESIDENTIAL PROPERTIES IN THE DEVELOPMENT 發展項目的住宅物業的樓面平面圖

## 2/F FLOOR PLAN 二樓平面圖



^ This part has been altered by way of minor works or exempted building works under the Buildings Ordinance after completion of the Development, the latest condition of which is shown on the relevant floor plan. The alteration(s) is/are as follows:

1. The location of the washing basin in the Lavatory has changed.
2. The number, design and location of the cooking stove in the kitchen have changed.
3. The layout of the cooking bench in the kitchen has changed.

Notes:

1. Please refer to the first page of the section "Floor Plans of Residential Properties in the Development" of this sales brochure for the legend of the terms and abbreviations for the floor plans and notes that are applicable thereto.
2. The dimensions of floor plans are all structural dimensions in millimetre.

^ 此部份因在發展項目落成後進行小型工程或獲《建築物條例》豁免的工程而有所改動，現狀請參閱有關平面圖。該等改動如下：

1. 洗手間內洗手盆的位置有改動。
2. 廚房內煮食爐的數量、設計及位置有改動。
3. 廚房內灶台的布局有改動。

備註：

1. 以上樓面平面圖中顯示之名詞及簡稱之圖例及其適用的備註，請參閱本售樓說明書「發展項目的住宅物業的樓面平面圖」一節首頁之說明。
2. 樓面平面圖所列之尺寸數字為以毫米標示的建築結構尺寸。

# 11 FLOOR PLANS OF RESIDENTIAL PROPERTIES IN THE DEVELOPMENT 發展項目的住宅物業的樓面平面圖

2/F 二樓	Units 單位					
	A	B	C	D	E	F
Thickness of Floor Slabs (excluding plaster) of each residential property (mm) 每個住宅物業的樓板厚度(不包括批盪)(毫米)	120 135	120	120 135 180	120 150	120 135	120 135
Floor-to-Floor Height (note: refers to the height between the top surface of the structural slab of floor and the top surface of the structural slab of its immediate upper floor) of each residential property (mm) 每個住宅物業的層與層之間的高度(註:指該樓層之石屎地台面與上一層石屎地台面之高度距離)(毫米)	3325 3325*	3325 3325^ 3225# 3325*	3325 3325^ 3325*	3325 3325^ 3325*	3325 3325@	3325 3325&

The internal areas of the residential properties on the upper floors will generally be slightly larger than those on the lower floors because of the reducing thickness of the structural walls on the upper floors. (Note: This required statement under Section 10(2)(e) in Part 1 of Schedule 1 to the Residential Properties (First-hand Sales) Ordinance (Cap.621) is not applicable to the Development.)

#### Remarks:

1. Please refer to the first page of the section "Floor Plans of Residential Properties in the Development" of this sales brochure for the notations of the terms and abbreviations for the floor plan of the residential properties.
2. ^ Inclusive of the sunken depth of the sunken slab on the floor of this floor (350mm).
3. # Inclusive of the sunken depth of the sunken slab on the floor of this floor (450mm).
4. \* Inclusive of the sunken depth of the sunken slab on the floor of this floor (550mm).
5. & Inclusive of the sunken depth of the sunken slab on the floor of this floor (600mm).
6. @ Inclusive of the sunken depth of the sunken slab on the floor of this floor (700mm).
7. The dimensions of floor plans are all structural dimensions in millimetre.

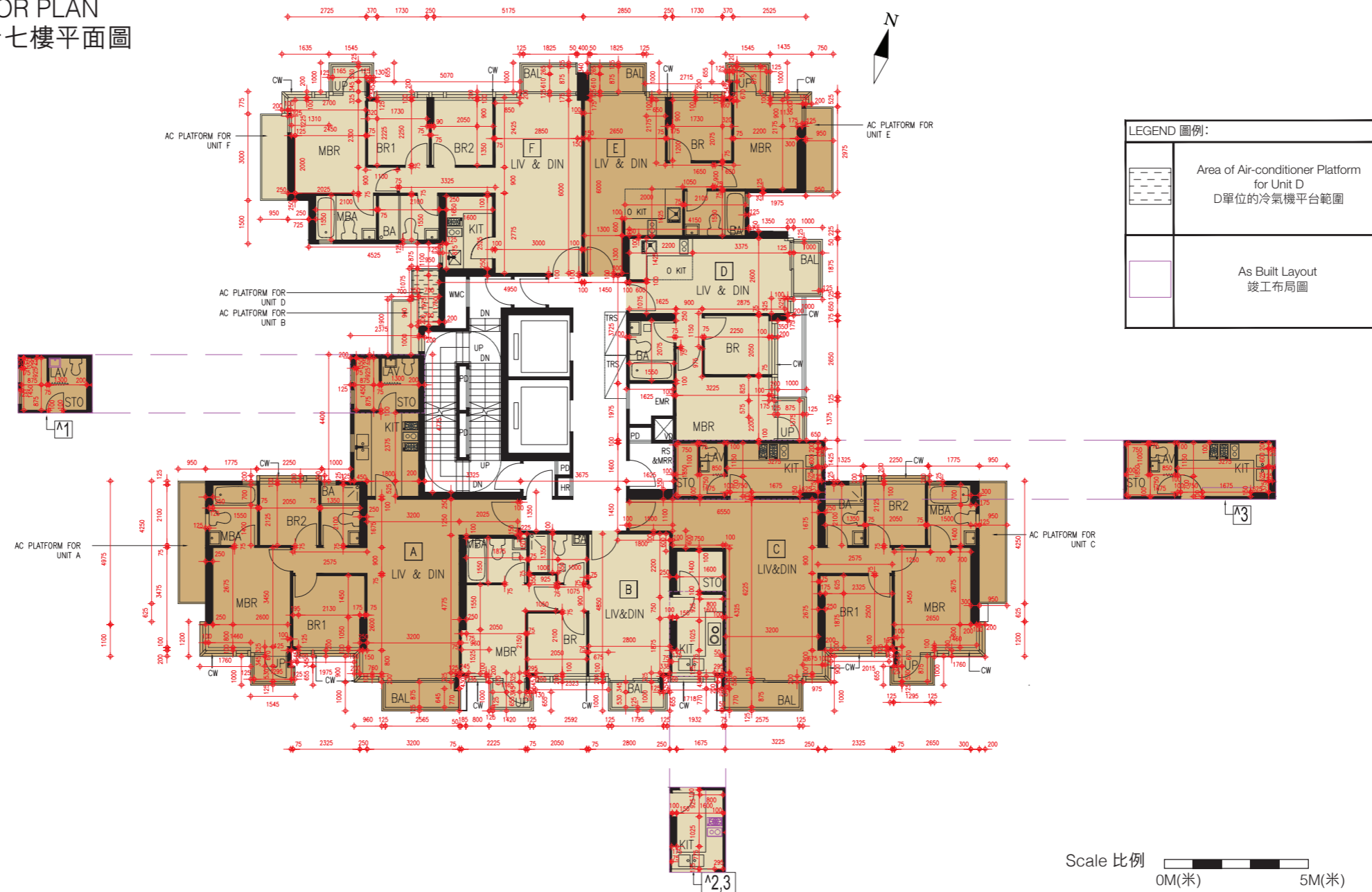
因住宅物業的較高樓層的結構的厚度遞減，較高樓層的內部面積，一般比較低樓層的內部面積稍大。(註：此根據《一手住宅物業銷售條例》(第621章)附表1第1部第10(2)(e)條所規定的陳述並不適用於發展項目。)

#### 備註：

1. 以上樓面平面圖中顯示之名詞及簡稱，請參閱本售樓說明書「發展項目的住宅物業的樓面平面圖」一節首頁之說明。
2. ^ 包括本層地台跌級樓板之跌級深度(350毫米)。
3. # 包括本層地台跌級樓板之跌級深度(450毫米)。
4. \* 包括本層地台跌級樓板之跌級深度(550毫米)。
5. & 包括本層地台跌級樓板之跌級深度(600毫米)。
6. @ 包括本層地台跌級樓板之跌級深度(700毫米)。
7. 樓面平面圖所列之尺寸數字為以毫米標示的建築結構尺寸。

# 11 FLOOR PLANS OF RESIDENTIAL PROPERTIES IN THE DEVELOPMENT 發展項目的住宅物業的樓面平面圖

## 3/F, 5/F - 12/F and 15/F - 17/F FLOOR PLAN 三樓、五樓至十二樓、十五樓至十七樓平面圖



^ This part has been altered by way of minor works or exempted building works under the Buildings Ordinance after completion of the Development, the latest condition of which is shown on the relevant floor plan. The alteration(s) is/are as follows:

1. The location of the washing basin in the Lavatory has changed.
2. The number, design and location of the cooking stove in the kitchen have changed.
3. The layout of the cooking bench in the kitchen has changed.

Notes:

1. Please refer to the first page of the section "Floor Plans of Residential Properties in the Development" of this sales brochure for the legend of the terms and abbreviations for the floor plans and notes that are applicable thereto.
2. The dimensions of floor plans are all structural dimensions in millimetre.

^ 此部份因在發展項目落成後進行小型工程或獲《建築物條例》豁免的工程而有所改動，現狀請參閱有關平面圖。該等改動如下：

1. 洗手間內洗手盆的位置有改動。
2. 廚房內煮食爐的數量、設計及位置有改動。
3. 廚房內灶台的布局有改動。

備註：

1. 以上樓面平面圖中顯示之名詞及簡稱之圖例及其適用的備註，請參閱本售樓說明書「發展項目的住宅物業的樓面平面圖」一節首頁之說明。
2. 樓面平面圖所列之尺寸數字為以毫米標示的建築結構尺寸。

# 11 FLOOR PLANS OF RESIDENTIAL PROPERTIES IN THE DEVELOPMENT 發展項目的住宅物業的樓面平面圖

3/F, 5/F to 12/F, 15/F to 16/F 三樓，五樓至十二樓，十五樓至十六樓	Units 單位					
	A	B	C	D	E	F
Thickness of Floor Slabs (excluding plaster) of each residential property (mm) 每個住宅物業的樓板厚度(不包括批盪)(毫米)	120 135	120	120 135 180	120 150	120 135	120 135
Floor-to-Floor Height (note: refers to the height between the top surface of the structural slab of floor and the top surface of the structural slab of its immediate upper floor) of each residential property (mm) 每個住宅物業的層與層之間的高度(註：指該樓層之石屎地台面與上一層石屎地台面之高度距離)(毫米)	3325 3325*	3325 3225# 3325*	3325 3325^ 3325*	3325 3325+ 3325*	3325 3325*	3325 3325+
17/F 十七樓	Units 單位					
	A	B	C	D	E	F
Thickness of Floor Slabs (excluding plaster) of each residential property (mm) 每個住宅物業的樓板厚度(不包括批盪)(毫米)	120 135	120	120 135 180	120 150	120 135	120 135
Floor-to-Floor Height (note: refers to the height between the top surface of the structural slab of floor and the top surface of the structural slab of its immediate upper floor) of each residential property (mm) 每個住宅物業的層與層之間的高度(註：指該樓層之石屎地台面與上一層石屎地台面之高度距離)(毫米)	3325 3325* 3625 3625*	3625 3625# 3625*	3625 3625^ 3625*	3625 3625+ 3625*	3325 3625 3625*	3325 3625 3625+

The internal areas of the residential properties on the upper floors will generally be slightly larger than those on the lower floors because of the reducing thickness of the structural walls on the upper floors. (Note: This required statement under Section 10(2)(e) in Part 1 of Schedule 1 to the Residential Properties (First-hand Sales) Ordinance (Cap.621) is not applicable to the Development.)

因住宅物業的較高樓層的結構的厚度遞減，較高樓層的內部面積，一般比較低樓層的內部面積稍大。(註：此根據《一手住宅物業銷售條例》(第621章)附表1第1部第10(2)(e)條所規定的陳述並不適用於發展項目。)

## Remarks:

- Please refer to the first page of the section "Floor Plans of Residential Properties in the Development" of this sales brochure for the notations of the terms and abbreviations for the floor plan of the residential properties.
- ^ Inclusive of the sunken depth of the sunken slab on the floor of this floor (300mm).
- + Inclusive of the sunken depth of the sunken slab on the floor of this floor (350mm).
- # Inclusive of the sunken depth of the sunken slab on the floor of this floor (450mm).
- \* Inclusive of the sunken depth of the sunken slab on the floor of this floor (550mm).
- The dimensions of floor plans are all structural dimensions in millimetre.

## 備註：

- 以上樓面平面圖中顯示之名詞及簡稱，請參閱本售樓說明書「發展項目的住宅物業的樓面平面圖」一節首頁之說明。
- ^ 包括本層地台跌級樓板之跌級深度(300毫米)。
- + 包括本層地台跌級樓板之跌級深度(350毫米)。
- # 包括本層地台跌級樓板之跌級深度(450毫米)。
- \* 包括本層地台跌級樓板之跌級深度(550毫米)。
- 樓面平面圖所列之尺寸數字為以毫米標示的建築結構尺寸。

# 11 FLOOR PLANS OF RESIDENTIAL PROPERTIES IN THE DEVELOPMENT 發展項目的住宅物業的樓面平面圖

## 18/F FLOOR PLAN 十八樓平面圖



^ This part has been altered by way of minor works or exempted building works under the Buildings Ordinance after completion of the Development, the latest condition of which is shown on the relevant floor plan. The alteration(s) is/are as follows:  
1. The location of the door of Bedroom 1 has changed.

Notes:

- Please refer to the first page of the section "Floor Plans of Residential Properties in the Development" of this sales brochure for the legend of the terms and abbreviations for the floor plans and notes that are applicable thereto.
- The dimensions of floor plans are all structural dimensions in millimetre.

^ 此部份因在發展項目落成後進行小型工程或獲《建築物條例》豁免的工程而有所改動，現狀請參閱有關平面圖。該等改動如下：  
1. 睡房1門的位置有改動。

備註：

- 以上樓面平面圖中顯示之名詞及簡稱之圖例及其適用的備註，請參閱本售樓說明書「發展項目的住宅物業的樓面平面圖」一節首頁之說明。
- 樓面平面圖所列之尺寸數字為以毫米標示的建築結構尺寸。

# 11 FLOOR PLANS OF RESIDENTIAL PROPERTIES IN THE DEVELOPMENT 發展項目的住宅物業的樓面平面圖

18/F 十八樓	Units 單位	
	A	B
Thickness of Floor Slabs (excluding plaster) of each residential property (mm) 每個住宅物業的樓板厚度(不包括批盪)(毫米)	150 180	150
Floor-to-Floor Height (note: refers to the height between the top surface of the structural slab of floor and the top surface of the structural slab of its immediate upper floor) of each residential property (mm) 每個住宅物業的層與層之間的高度(註：指該樓層之石屎地台面與上一層石屎地台面之高度距離)(毫米)	3700 3700' 3700# 3700^	3700 3700' 3700* 3700^

The internal areas of the residential properties on the upper floors will generally be slightly larger than those on the lower floors because of the reducing thickness of the structural walls on the upper floors. (Note: This required statement under Section 10(2)(e) in Part 1 of Schedule 1 to the Residential Properties (First-hand Sales) Ordinance (Cap.621) is not applicable to the Development.)

因住宅物業的較高樓層的結構的厚度遞減，較高樓層的內部面積，一般比較低樓層的內部面積稍大。(註：此根據《一手住宅物業銷售條例》(第621章)附表1第1部第10(2)(e)條所規定的陳述並不適用於發展項目。)

## Remarks:

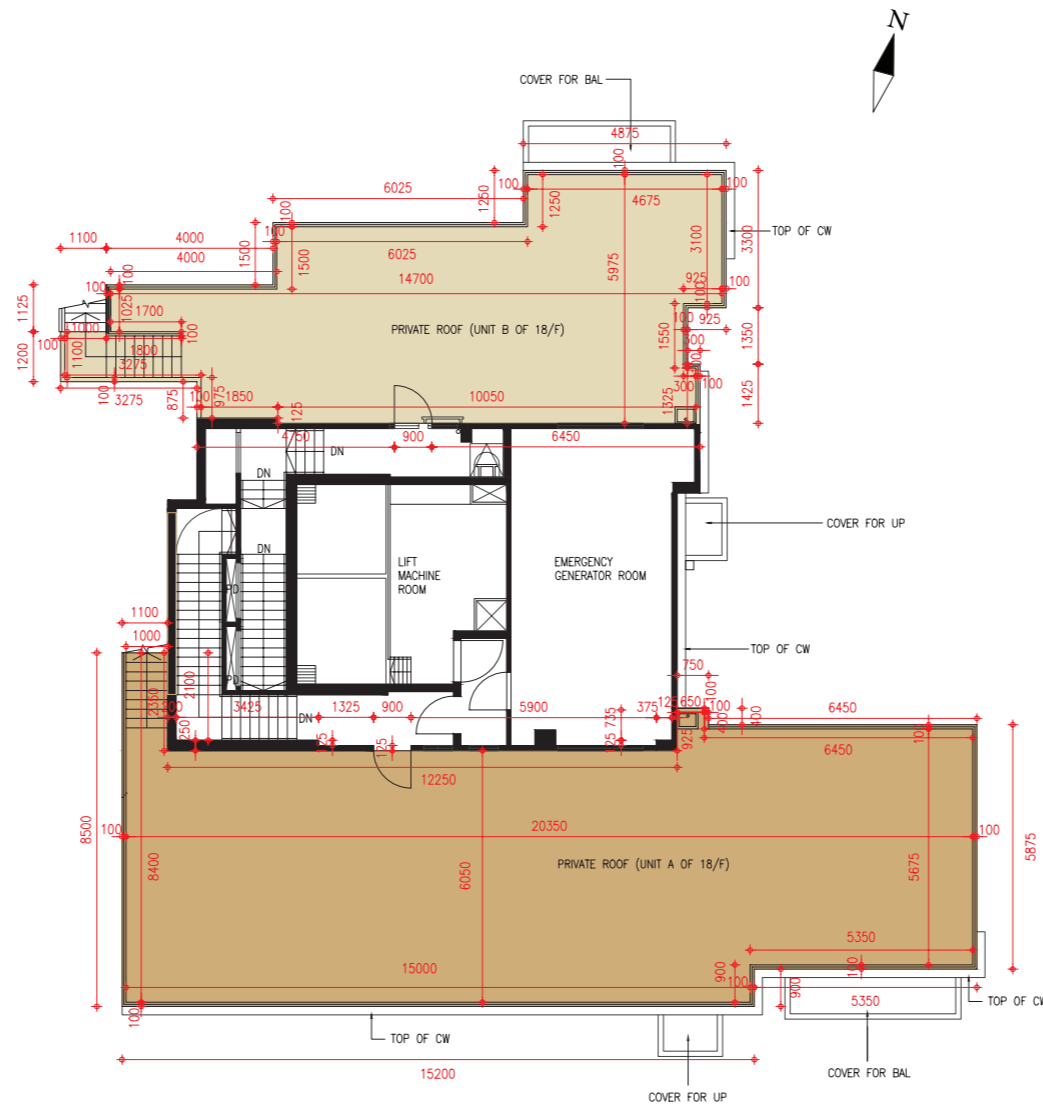
1. Please refer to the first page of the section "Floor Plans of Residential Properties in the Development" of this sales brochure for the notations of the terms and abbreviations for the floor plan of the residential properties.
2. ' Inclusive of the sunken depth of the sunken slab on the floor of this floor (250mm).
3. # Inclusive of the sunken depth of the sunken slab on the floor of this floor (300mm).
4. \* Inclusive of the sunken depth of the sunken slab on the floor of this floor (350mm).
5. ^ Inclusive of the sunken depth of the sunken slab on the floor of this floor (550mm).
6. The dimensions of floor plans are all structural dimensions in millimetre.

## 備註：

1. 以上樓面平面圖中顯示之名詞及簡稱，請參閱本售樓說明書「發展項目的住宅物業的樓面平面圖」一節首頁之說明。
2. ' 包括本層地台跌級樓板之跌級深度(250毫米)。
3. # 包括本層地台跌級樓板之跌級深度(300毫米)。
4. \* 包括本層地台跌級樓板之跌級深度(350毫米)。
5. ^ 包括本層地台跌級樓板之跌級深度(550毫米)。
6. 樓面平面圖所列之尺寸數字為以毫米標示的建築結構尺寸。

# 11 FLOOR PLANS OF RESIDENTIAL PROPERTIES IN THE DEVELOPMENT 發展項目的住宅物業的樓面平面圖

## ROOF FLOOR PLAN 天台平面圖



Scale 比例 0M(米) 5M(米)

Notes:

1. Please refer to the first page of the section "Floor Plans of Residential Properties in the Development" of this sales brochure for the legend of the terms and abbreviations for the floor plans and notes that are applicable thereto.
2. The dimensions of floor plans are all structural dimensions in millimetre.

備註：

1. 以上樓面平面圖中顯示之名詞及簡稱之圖例及其適用的備註，請參閱本售樓說明書「發展項目的住宅物業的樓面平面圖」一節首頁之說明。
2. 樓面平面圖所列之尺寸數字為以毫米標示的建築結構尺寸。



# 11 FLOOR PLANS OF RESIDENTIAL PROPERTIES IN THE DEVELOPMENT

## 發展項目的住宅物業的樓面平面圖

Roof 天台	Units 單位	
	A	B
Thickness of Floor Slabs (excluding plaster) of each residential property (mm) 每個住宅物業的樓板厚度(不包括批盪)(毫米)	N/A 不適用	N/A 不適用
Floor-to-Floor Height (note: refers to the height between the top surface of the structural slab of floor and the top surface of the structural slab of its immediate upper floor) of each residential property (mm) 每個住宅物業的層與層之間的高度(註:指該樓層之石屎地台面與上一層石屎地台面之高度距離)(毫米)	N/A 不適用	N/A 不適用

The internal areas of the residential properties on the upper floors will generally be slightly larger than those on the lower floors because of the reducing thickness of the structural walls on the upper floors. (Note: This required statement under Section 10(2)(e) in Part 1 of Schedule 1 to the Residential Properties (First-hand Sales) Ordinance (Cap.621) is not applicable to the Development.)

因住宅物業的較高樓層的結構的厚度遞減，較高樓層的內部面積，一般比較低樓層的內部面積稍大。(註：此根據《一手住宅物業銷售條例》(第621章)附表1第1部第10(2)(e)條所規定的陳述並不適用於發展項目。)

### Remarks:

1. Please refer to the first page of the section "Floor Plans of Residential Properties in the Development" of this sales brochure for the notations of the terms and abbreviations for the floor plan of the residential properties.
2. The dimensions of floor plans are all structural dimensions in millimetre.

### 備註：

1. 以上樓面平面圖中顯示之名詞及簡稱，請參閱本售樓說明書「發展項目的住宅物業的樓面平面圖」一節首頁之說明。
2. 樓面平面圖所列之尺寸數字為以毫米標示的建築結構尺寸。