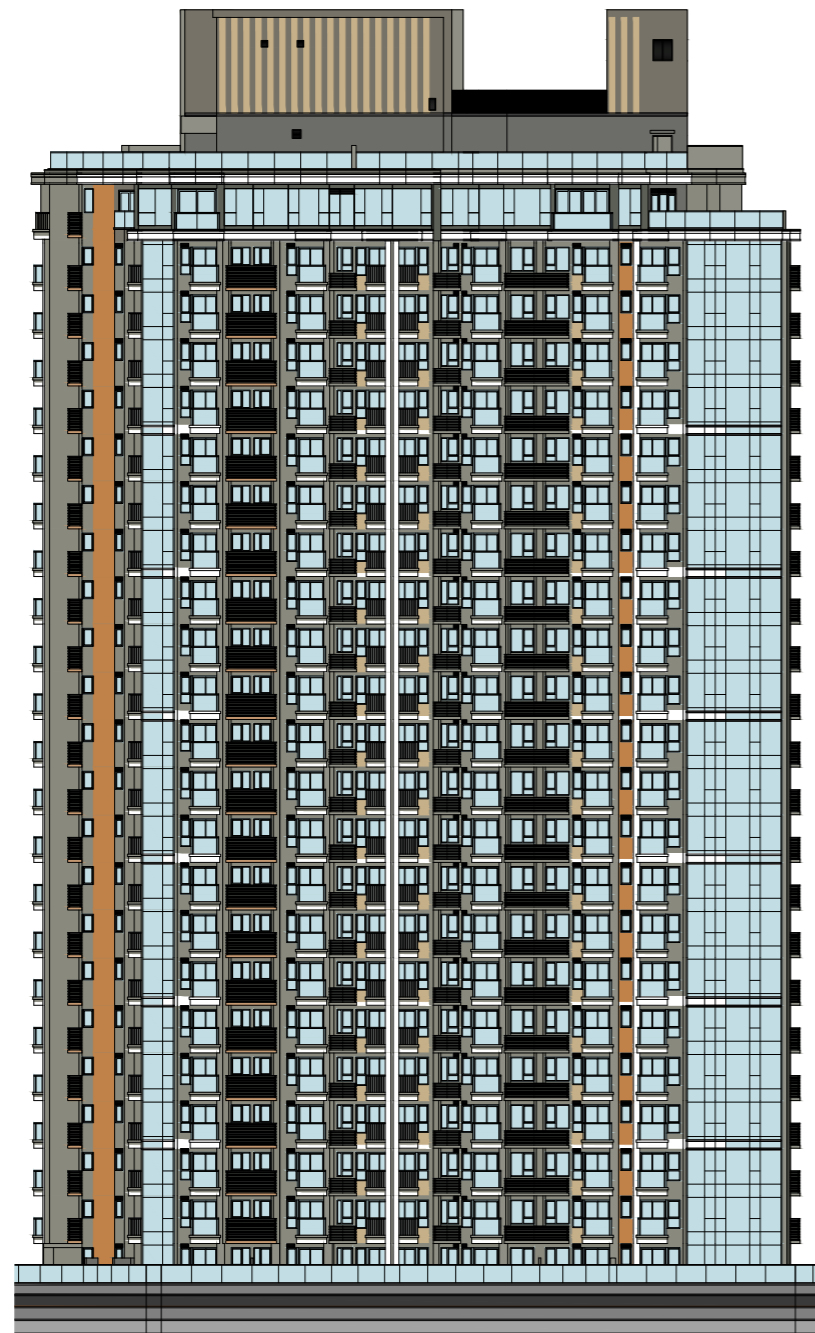


ELEVATION PLAN 立面圖

FISKARS TOWER 1
FISKARS第1座

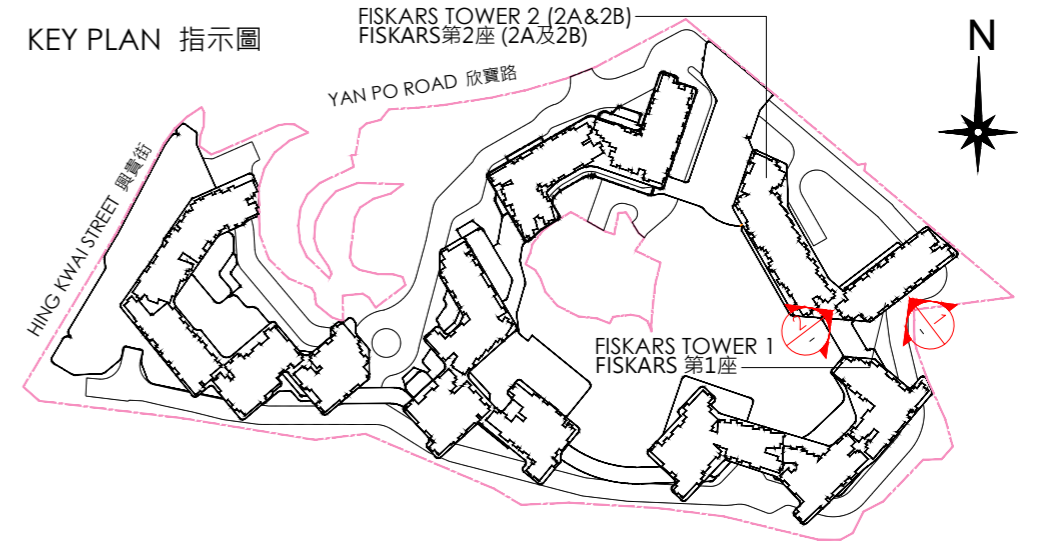


ELEVATION PLAN 1 立面圖 1

FISKARS TOWER 1
FISKARS第1座



ELEVATION PLAN 2 立面圖 2



----- Boundary of the Development
發展項目的界線

Authorized Person for the Phase
certified that the elevations shown on
this plan:

- a. are prepared on the basis of the approved building plans for the Phase as of 31 May 2024; and
- b. are in general accordance with the outward appearance of the Phase.

期數的認可人士證明本圖顯示的立面:

- a. 以2024年5月31日的情況為準的期數的經批准的建築圖則為基礎擬備;及
- b. 大致上與期數的外觀一致。

ELEVATION PLAN 立面圖

FISKARS TOWER 1
FISKARS第1座

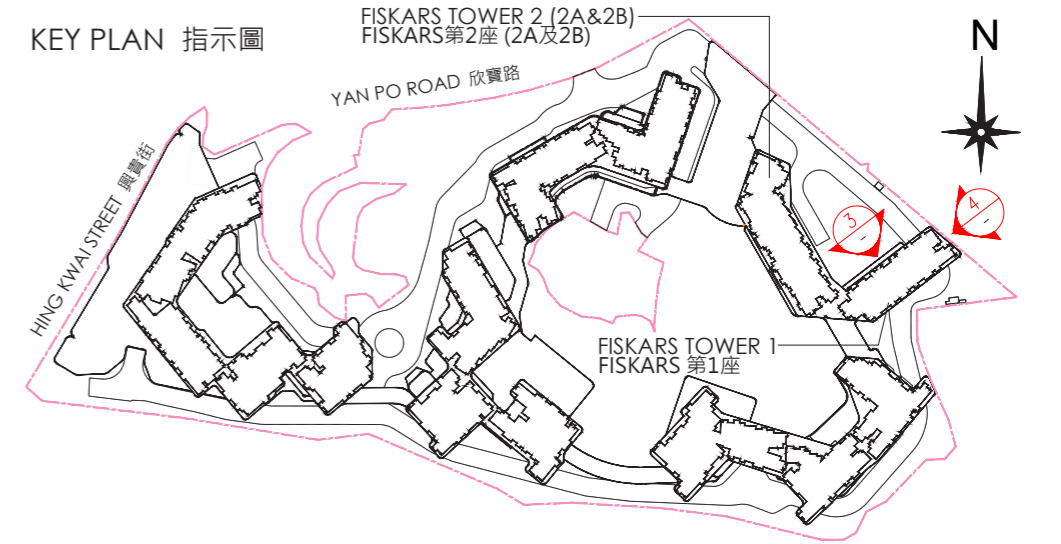


ELEVATION PLAN 3 立面圖 3

FISKARS TOWER 1
FISKARS第1座



ELEVATION PLAN 4 立面圖 4



----- Boundary of the Development
發展項目的界線

Authorized Person for the Phase
certified that the elevations shown on
this plan:

- a. are prepared on the basis of the approved building plans for the Phase as of 31 May 2024; and
- b. are in general accordance with the outward appearance of the Phase.

期數的認可人士證明本圖顯示的立面:

- a. 以2024年5月31日的情況為準的期數的經批准的建築圖則為基礎擬備;及
- b. 大致上與期數的外觀一致。

ELEVATION PLAN 立面圖

FISKARS TOWER 2 (2A&2B)
FISKARS 第2座 (2A及2B)

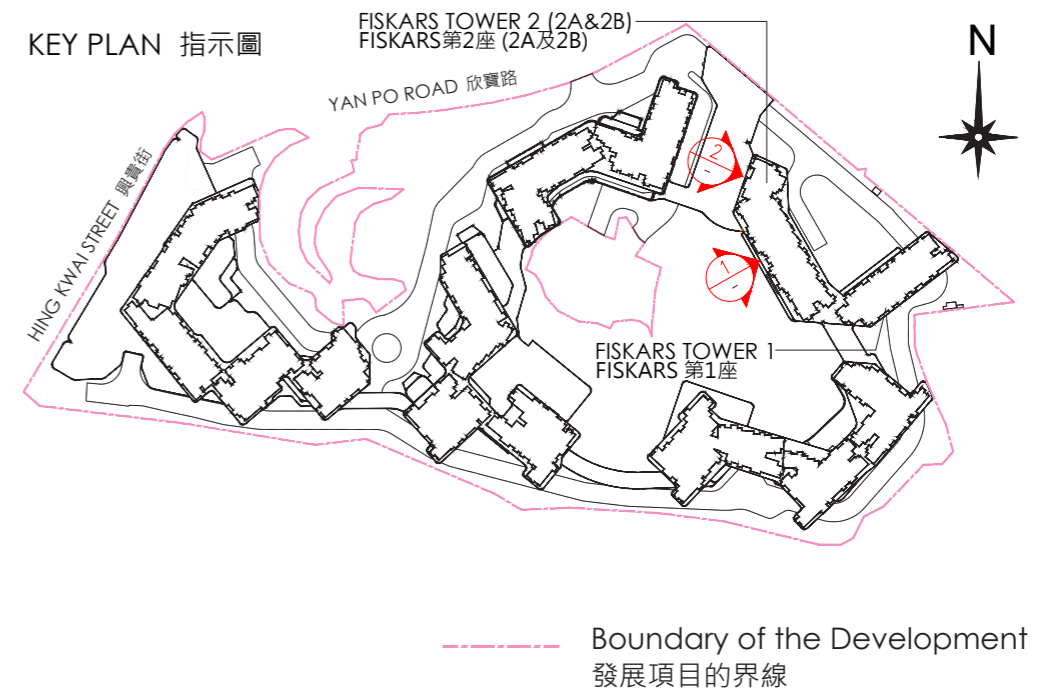


ELEVATION PLAN 1 立面圖 1

FISKARS TOWER 2 (2A&2B)
FISKARS 第2座 (2A及2B)



ELEVATION PLAN 2 立面圖 2



Authorized Person for the Phase certified that the elevations shown on this plan:

- a. are prepared on the basis of the approved building plans for the Phase as of 31 May 2024; and
- b. are in general accordance with the outward appearance of the Phase.

期數的認可人士證明本圖顯示的立面:

- a. 以2024年5月31日的情況為準的期數的經批准的建築圖則為基礎擬備;及
- b. 大致上與期數的外觀一致。

ELEVATION PLAN 立面圖

FISKARS TOWER 2 (2A&2B)
FISKARS 第2座 (2A及2B)

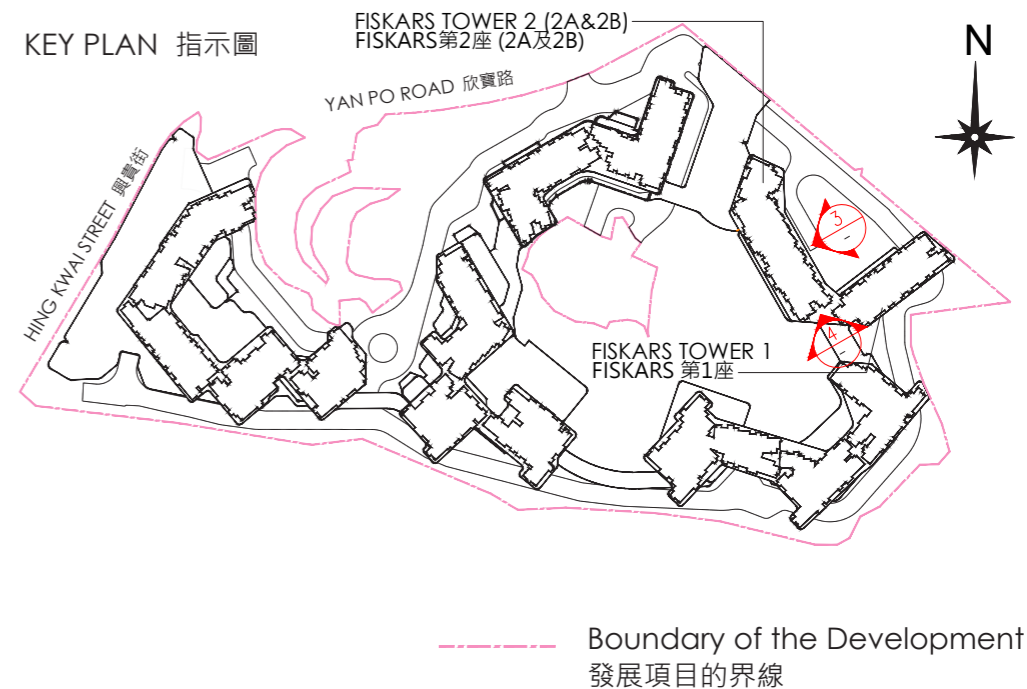


ELEVATION PLAN 3 立面圖 3

FISKARS TOWER 2 (2A&2B)
FISKARS 第2座 (2A及2B)



ELEVATION PLAN 4 立面圖 4



Authorized Person for the Phase certified that the elevations shown on this plan:

- a. are prepared on the basis of the approved building plans for the Phase as of 31 May 2024; and
- b. are in general accordance with the outward appearance of the Phase.

期數的認可人士證明本圖顯示的立面:

- a. 以2024年5月31日的情況為準的期數的經批准的建築圖則為基礎擬備;及
- b. 大致上與期數的外觀一致。