

Floor plans of residential properties in the development

發展項目的住宅物業的樓面平面圖

Remarks applicable to the floor plans in this section :

1. There are architectural features and/or exposed pipes on the external walls of some of the floors. For details, please refer to the latest approved building plans and/or approved drainage plans and/or other relevant plans.
2. Common pipes exposed and/or enclosed in cladding are located at / adjacent to the balcony and/or utility platform and/or private garden and/or conservatory and/or private flat roof and/or flat roof and/or air-conditioner platform and/or external wall of some residential properties. For details, please refer to the latest approved building plans and/or approved drainage plans and/or other relevant plans.
3. There are sunken slabs for mechanical and electrical services and/or false ceiling / bulkheads for the air-conditioning fittings and/or mechanical and electrical services at some residential properties.
4. There may be exposed pipes installed in some stores, bathrooms, lavatories, utility rooms and powder rooms.
5. There are pipes enclosed by the fittings and finishes in some residential properties. For details, please refer to the latest approved drainage plans and/or other relevant plans.
6. There may be exposed pipes located at the upper part of some balconies, utility platforms, air-conditioner platforms and private flat roofs.
7. Balconies, utility platforms, air-conditioner platforms and conservatories are non-enclosed areas.
8. There may be non-structural prefabricated external walls and curtain walls in some residential properties. The saleable area as defined in the formal Agreement for Sale and Purchase of a residential property has included the non-structural prefabricated external walls and curtain walls and is measured from the exterior of such non-structural prefabricated external walls and curtain walls.
9. The ceiling height of some residential properties may vary due to structural, architectural and/or decoration design variations.
10. During the necessary maintenance of the external walls of building arranged by Manager of the Development, suspended working platform will be operating in the airspace outside windows and /or private garden and/or above flat roof / roof of the residential properties of such building.
11. Symbols of fittings and fitments such as bath tub, sink, water closet, shower, sink counter, etc.in the floor plans are prepared based on the latest approved building plans and are for general indication only. Their shapes, dimensions and scales may differ from the fittings and fitments actually provided.
12. The air-conditioner (outdoor unit) at air-conditioner platform, common area, roof, private roof, maintenance flat roof and top of stairhood may emit heat and/or sound.
13. In the description of residential property in a residential block, the prefix “D” means Deluxe Duplex unit and the numbering means the numbering of Deluxe Duplex unit. E.g. “D1” refers to Deluxe Duplex 1.
14. In the description of residential property in a residential block, the prefix “E” means Elite Residence unit and the numbering means the numbering of Elite Residence unit. E.g. “E1” refers to Elite Residence 1.
15. In the description of residential property in a residential block, the prefix “G” means Garden Residence unit and the numbering means the numbering of Garden Residence unit. E.g. “G1” refers to Garden Residence 1.
16. In the description of residential property in a residential block, the prefix “S” means Superior Residence unit and the numbering means the numbering of Superior Residence unit. E.g. “S1” refers to Superior Residence 1.

適用於本節之樓面平面圖之備註：

1. 部分樓層外牆範圍設有建築裝飾及/或外露喉管，詳細資料請參考最新經批准的建築圖則及/或經批准的排水設施圖則及/或其他相關圖則。
2. 部分住宅物業的露台及/或工作平台及/或私人花園及/或溫室及/或私人平台及/或平台及/或空調機平台及/或外牆上 / 附近設有外露及/或外牆裝飾板 (覆蓋板) 內藏公用喉管，詳細資料請參考最新經批准的建築圖則及/或經批准的排水設施圖則及/或其他相關圖則。
3. 部分住宅物業有用以安裝機電設備的跌級樓板及/或用以裝置空調裝備及/或其他機電設備的假天花 / 裝飾橫樑。
4. 部分儲物室、浴室、洗手間、工作間及客廳洗手間內可能裝有外露喉管。
5. 部分住宅物業於裝置及裝修物料內設有喉管。詳細資料請參考最新經批准的排水設施圖則及/或其他相關圖則。
6. 部分露台、工作平台、空調機平台及私人平台上方可能裝有外露喉管。
7. 露台、工作平台、空調機平台及溫室為不可封閉的地方。
8. 部分住宅物業可能裝有非結構預製外牆及幕牆。住宅物業之正式買賣合約之實用面積之計算包括非結構預製外牆及幕牆，並由非結構預製外牆及幕牆之外圍起計。
9. 部分住宅物業之天花高度將會因應結構、建築設計及/或裝修設計上的需要有差異。
10. 在發展項目管理人安排於建築物外牆之必要維修進行期間，吊船將在該建築物的住宅物業之窗戶外及/或私人花園及/或平台上方 / 天台之空間運作。
11. 樓面平面圖上所顯示的裝置符號，如浴缸、洗滌盆、坐廁、花灑、洗滌盆櫃等乃按最新的經批准的建築圖則繪製，只作一般示意用途。其形狀、尺寸、比例或與實際提供的裝置及設備存在差異。
12. 空調機(室外機)於空調機平台、公用地方、天台、私人天台、維修平台及梯屋頂蓋可能發出熱力及/或聲音。
13. 住宅大樓的住宅物業的描述中，字首「D」指Deluxe Duplex單位，而編號指Deluxe Duplex單位的編號。例如「D1」指Deluxe Duplex 1號單位。
14. 住宅大樓的住宅物業的描述中，字首「E」指Elite Residence單位，而編號指Elite Residence單位的編號。例如「E1」指Elite Residence 1號單位。
15. 住宅大樓的住宅物業的描述中，字首「G」指Garden Residence單位，而編號指Garden Residence單位的編號。例如「G1」指Garden Residence 1號單位。
16. 住宅大樓的住宅物業的描述中，字首「S」指Superior Residence單位，而編號指Superior Residence單位的編號。例如「S1」指Superior Residence 1號單位。

Floor plans of residential properties in the development

發展項目的住宅物業的樓面平面圖

Legend for floor plans of residential properties in the development

發展項目的住宅物業的樓面平面圖圖例

A.D. = Air Duct 風槽

AC = Air-conditioner Platform 空調機平台

A/C PLANT ROOM = Air-conditioner Plant Room 空調機機房

A.F. = Architectural Feature 建築裝飾

ALUM. GRILLE = Aluminium Grille 鋁質百葉

ALUM. CANOPY = Aluminium Canopy 鋁質簷篷

BATH. = Bathroom 浴室

BATH.2 = Bathroom 2 浴室2

BATH.3 = Bathroom 3 浴室3

BAL. = Balcony 露台

BALCONY ABOVE = Balcony above 露台在上方

BAL./U.P. ABOVE = Balcony/Utility Platform Above 露台/工作平台在上方

BAL./U.P. = Balcony/Utility Platform 露台/工作平台

B.R.1 = Bedroom 1 睡房1

B.R.2 = Bedroom 2 睡房2

B.R.3 = Bedroom 3 睡房3

CARETAKER'S COUNTER = Caretaker's Counter 管理處櫃位

CHILDREN PLAY AREA = Children Play Area 兒童遊戲區

CLUB HOUSE READING ROOM = Club House Reading Room 會所閱讀室

COMMON ROOF = Common Roof 公用平台

CONSERVATORY = Conservatory 溫室

DN. = Down 下

DOG HOUSE = Mechanical & Electrical Services Duct Connecting to the Floor Below 連接下層的機電設施管道

E.L. DUCT = Electrical Duct 電線槽

EL ROOM = Electrical Room 電線房

E.M.C. = Electrical Meter Cabinet 電錶櫃

E.M.R. = Electrical Meter Room 電錶房

E.P.D. = External Pipe Duct (Architectural Feature) 外置管道槽(建築裝飾)

FAN ROOM FOR R.S. & M.R.R. = Fan Room For Refuse Storage and Material Recovery Room
垃圾及物料回收室之風機房

FAMILY RM. = Family Room 起居室

F.H. = Fire Hydrant 消防栓

FLAT ROOF = Flat Roof 平台

H/L OF STAIRCASE = High Level of Staircase 樓梯高位

H.R. = Hose Reel 消防喉轆

KIT. = Kitchen 廚房

LAV. = Lavatory 洗手間

LIFT = Lift 升降機

LIFT LOBBY = Lift Lobby 升降機大堂

LIGHT WELL = Light Well 天井

LIV./DIN. = Living/Dining Room 客/飯廳

M.BATH. = Master Bathroom 主人房浴室

M.B.R. = Master Bedroom 主人睡房

METAL COVER = Metal Cover 金屬上蓋

M.F.R. = Maintenance Flat Roof 維修平台

O.K. = Open Kitchen 開放式廚房

Floor plans of residential properties in the development

發展項目的住宅物業的樓面平面圖

Legend for floor plans of residential properties in the development

發展項目的住宅物業的樓面平面圖圖例

OWNERS CORPORATION OFFICE = Owners Corporation Office 業主立案法團辦公室

P.A. = Planter 花槽

P.D. = Pipe Duct 管道槽

POW. = Powder Room 客廳洗手間

PRIVATE FLAT ROOF = Private Flat Roof 私人平台

PRIVATE GARDEN = Private Garden 私人花園

PRIVATE ROOF = Private Roof 私人天台

P.W. = Pipe Well 管道井

R.C. A.F. = Reinforced Concrete Architectural Feature 鋼筋混凝土建築裝飾

R.C. COVER = Reinforced Concrete Cover 鋼筋混凝土上蓋

R.C. COVER ABOVE = Reinforced Concrete Cover Above 鋼筋混凝土上蓋在上方

R.C. PLINTH = Reinforced Concrete Plinth 鋼筋混凝土基座

RS & MRR = Refuse Storage and Material Recovery Room 垃圾及物料回收室

REFUSE STORAGE & MATERIAL RECOVERY CHAMBER = Refuse Storage and Material Recovery Chamber
垃圾及物料回收房

SKYLIGHT = Skylight 天窗

ST. = Store 儲物室

T.B.E. ROOM (2) = Telecommunications and Broadcasting Equipment Room (2) 電訊及廣播設備室(2)

TOP OF E.P.D. = Top of External Pipe Duct (Architectural Feature) 外置管道槽頂蓋(建築裝飾)

T.R.S. = Temporary Refuge Space 臨時庇護處

UP = Up 上

U.P. = Utility Platform 工作平台

U.P. ABOVE = Utility Platform above 工作平台在上方

UPPER PART OF CORRIDOR = Upper Part of Corridor 通道的上半部分

UPPER PART OF EL ROOM = Upper Part of EL Room 電線房的上半部分

UPPER PART OF H.R. = Upper part of Hose Reel 消防喉轆的上半部分

UPPER PART OF FAN ROOM FOR R.S. & M.R.R. = Upper Part of Fan Room For Refuse Storage and Material Recovery Room
垃圾及物料回收室之風機房的上半部分

UPPER PART OF W.M.C. = Upper part of Water Meter Cabinet 水錶櫃的上半部分

UTIL. = Utility Room 工作間

V.D. = Ventilation Duct 通風管道

VERTICAL GREENING = Vertical Greening 垂直綠化

VOID = Void 中空

W.M.C. = Water Meter Cabinet 水錶櫃

Floor plans of residential properties in the development

發展項目的住宅物業的樓面平面圖

G/F
地下

Description 描述	Flat 單位								
	D1	D2	D3	D5	D6	D7	G3	G5	G6
	Duplex Unit (Lower Floor) 複式單位 (下層)								
Floor-to-floor height (refers to the height between the top surface of the structural slab of a floor and the top surface of the structural slab of its immediate upper floor) of each residential property (m) 每個住宅物業的層與層之間的高度 (指該樓層之石屎地台面與上一層石屎地台面之高度距離) (米)	3.100	2.850					2.675		2.675
	3.200	2.950			3.100		2.775		2.775
	3.300 [◇]	3.100			3.200		2.925	2.675	2.925
	3.350	3.200			3.300 [◇]		2.925 [☆]	2.775	2.925 [☆]
	3.450 [☆]	3.300 [◇]			3.350		3.025	3.025	3.025
	3.450 [△]	3.350			3.450 [☆]		3.125 [△]	3.025 [△]	3.025 [△]
	3.550 [△]	3.450 [☆]			3.450 [△]		3.175	3.025 [☆]	3.025 [◇]
	6.200	3.450 [△]			3.550 [△]		3.175 [☆]	3.025 [◇]	3.125 [△]
		6.200		6.200		3.275 [☆]	3.175	3.125 [◇]	
						3.375 [△]		3.175	
Thickness of the floor slabs (excluding plaster) of each residential property (mm) 每個住宅物業的樓板 (不包括灰泥) 厚度 (毫米)							150		
							175		

The internal areas of the residential properties on the upper floors will generally be slightly larger than those on the lower floors because of the reducing thickness of the structural walls on the upper floors.

(This statement as required under section 10(2)(e) of Part 1 of Schedule 1 to the Residential Properties (First-hand Sales) Ordinance is not applicable to the Development.)

因住宅物業的較高樓層的結構牆的厚度遞減，較高樓層的內部面積，一般比較低樓層的內部面積稍大。
(此根據《一手住宅物業銷售條例》附表1第1部第10(2)(e)條規定之陳述並不適用於本發展項目。)

Remarks:

- The dimensions in the floor plans are all structural dimensions in millimetre and rounded off to the nearest integer.
- Please refer to Page 30 to Page 31 of this sales brochure for legend of the terms and abbreviations shown in the floor plans.
- The floor-to-floor height (i.e. the height between the top surface of the structural slab of that floor and the top surface of the structured slab of its immediate upper floor) includes, without limitation:
 - (◇) Inclusive of the sunken depth of the sunken slab on the floor of that floor (0.100m);
 - (☆) Inclusive of the sunken depth of the sunken slab on the floor of that floor (0.250m);
 - (△) Inclusive of the sunken depth of the sunken slab on the floor of that floor (0.350m);
 those sunken slabs located partly on the structural slab of that floor or its immediate upper floor.
- In the description of residential property in a residential block, the prefix "D" means Deluxe Duplex unit and the numbering means the numbering of Deluxe Duplex unit. E.g. "D1" refers to Deluxe Duplex 1.
- In the description of residential property in a residential block, the prefix "G" means Garden Residence unit and the numbering means the numbering of Garden Residence unit. E.g. "G1" refers to Garden Residence 1.

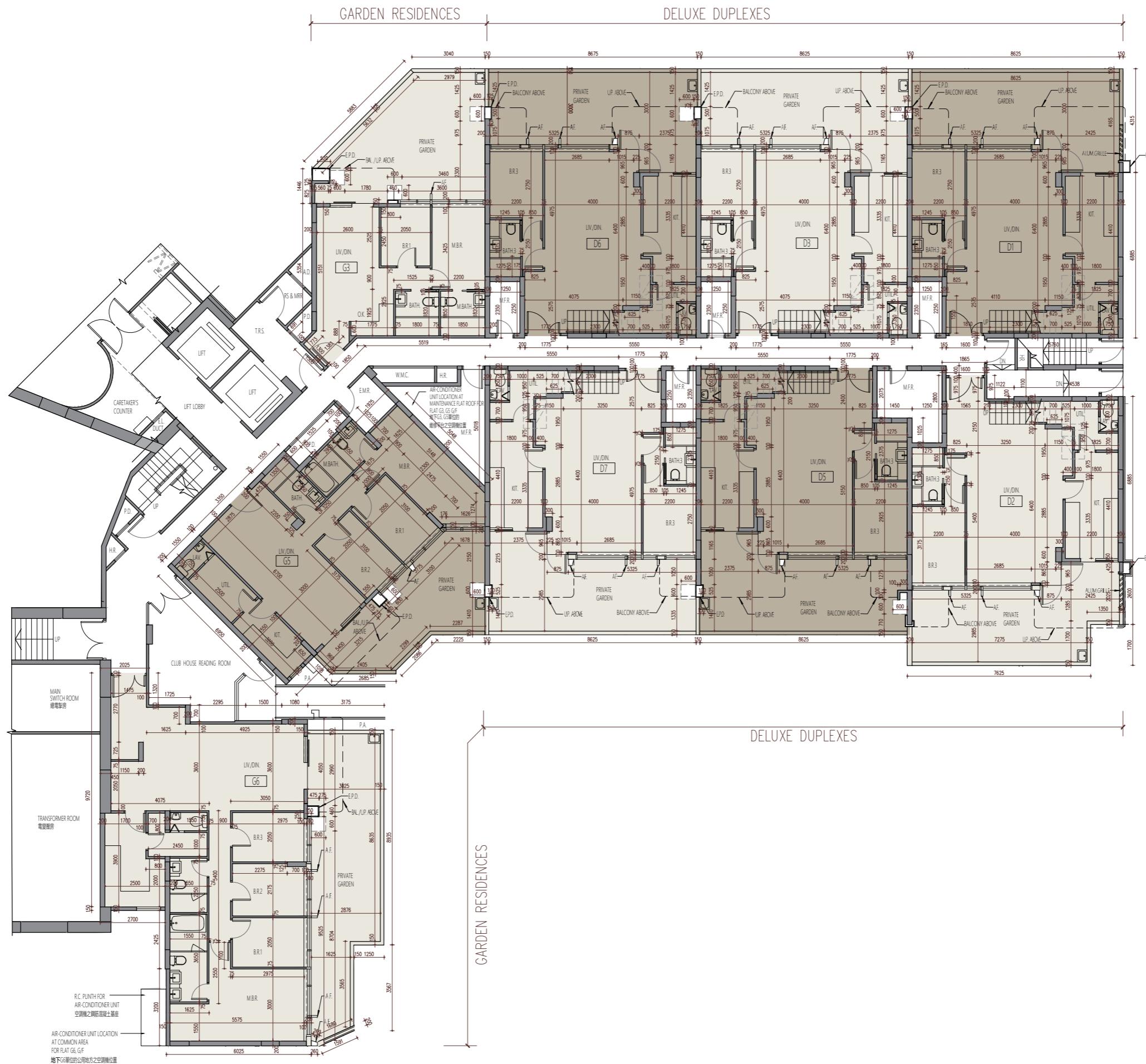
備註:

- 樓面平面圖所列數字為以毫米標示之建築結構尺寸，並以四捨五入至整數。
- 樓面平面圖中顯示之名詞及簡稱之圖例，請參閱本售樓說明書第30頁至第31頁。
- 層與層之間的高度（指該樓層之石屎地台面與上一層石屎地台面之高度距離）包括但不限於：
 - (◇) 當中在該樓層跌級樓板為0.100米的跌級高度；
 - (☆) 當中在該樓層跌級樓板為0.250米的跌級高度；
 - (△) 當中在該樓層跌級樓板為0.350米的跌級高度；
 該等跌級樓板有部分位於該樓層或上一層之石屎地台面。
- 住宅大樓的住宅物業的描述中，字首「D」指Deluxe Duplex單位，而編號指Deluxe Duplex單位的編號。例如「D1」指Deluxe Duplex 1號單位。
- 住宅大樓的住宅物業的描述中，字首「G」指Garden Residence單位，而編號指Garden Residence單位的編號。例如「G1」指Garden Residence 1號單位。

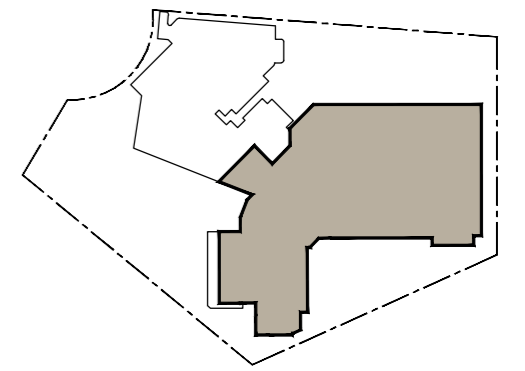
Floor plans of residential properties in the development

發展項目的住宅物業的樓面平面圖

G/F
地下



KEY PLAN 索引圖



Scale 0 5M(米)
比例

Floor plans of residential properties in the development

發展項目的住宅物業的樓面平面圖

1/F 1樓

Description 描述	Flat 單位								
	D1	D2	D3	D5	D6	D7	G3	G5	G6
	Duplex Unit (Upper Floor) 複式單位 (上層)								
Floor-to-floor height (refers to the height between the top surface of the structural slab of a floor and the top surface of the structural slab of its immediate upper floor) of each residential property (m) 每個住宅物業的層與層之間的高度 (指該樓層之石屎地台面與上一層石屎地台面之高度距離) (米)	2.500 2.600 2.600◇ 2.750 2.850 2.950◇ 3.100☆ 6.050	2.500 2.600 2.600◇ 2.750 2.850 2.950◇ 3.100☆ 3.200△ 6.050	2.600 2.600◇ 2.700◇ 2.750 2.850 2.950◇ 3.100☆ 6.050	2.500 2.600 2.600◇ 2.750 2.850 2.950◇ 3.100☆ 3.200△ 6.050	2.500 2.600 2.600◇ 2.700◇ 2.850 2.950◇ 3.100☆ 3.200△ 6.050	2.500 2.600 2.600◇ 2.750 2.850 2.950◇ 3.100☆ 3.200△ 6.050	2.675 2.775 2.775◇ 2.875◇ 3.025 3.025△ 3.025☆ 3.025◇ 3.125◇ 3.275☆	3.025 3.025△ 3.025☆ 3.025◇	3.025 3.025△ 3.025☆ 3.375△
Thickness of the floor slabs (excluding plaster) of each residential property (mm) 每個住宅物業的樓板 (不包括灰泥) 厚度 (毫米)	150 175								

The internal areas of the residential properties on the upper floors will generally be slightly larger than those on the lower floors because of the reducing thickness of the structural walls on the upper floors.

(This statement as required under section 10(2)(e) of Part 1 of Schedule 1 to the Residential Properties (First-hand Sales) Ordinance is not applicable to the Development.)

因住宅物業的較高樓層的結構牆的厚度遞減，較高樓層的內部面積，一般比較低樓層的內部面積稍大。
(此根據《一手住宅物業銷售條例》附表1第1部第10(2)(e)條規定之陳述並不適用於本發展項目。)

Remarks:

- The dimensions in the floor plans are all structural dimensions in millimetre and rounded off to the nearest integer.
- Please refer to Page 30 to Page 31 of this sales brochure for legend of the terms and abbreviations shown in the floor plans.
- The floor-to-floor height (i.e. the height between the top surface of the structural slab of that floor and the top surface of the structured slab of its immediate upper floor) includes, without limitation:
 - (◇) Inclusive of the sunken depth of the sunken slab on the floor of that floor (0.100m);
 - (☆) Inclusive of the sunken depth of the sunken slab on the floor of that floor (0.250m);
 - (△) Inclusive of the sunken depth of the sunken slab on the floor of that floor (0.350m);
 those sunken slabs located partly on the structural slab of that floor or its immediate upper floor.
- In the description of residential property in a residential block, the prefix "D" means Deluxe Duplex unit and the numbering means the numbering of Deluxe Duplex unit. E.g. "D1" refers to Deluxe Duplex 1.
- In the description of residential property in a residential block, the prefix "G" means Garden Residence unit and the numbering means the numbering of Garden Residence unit. E.g. "G1" refers to Garden Residence 1.

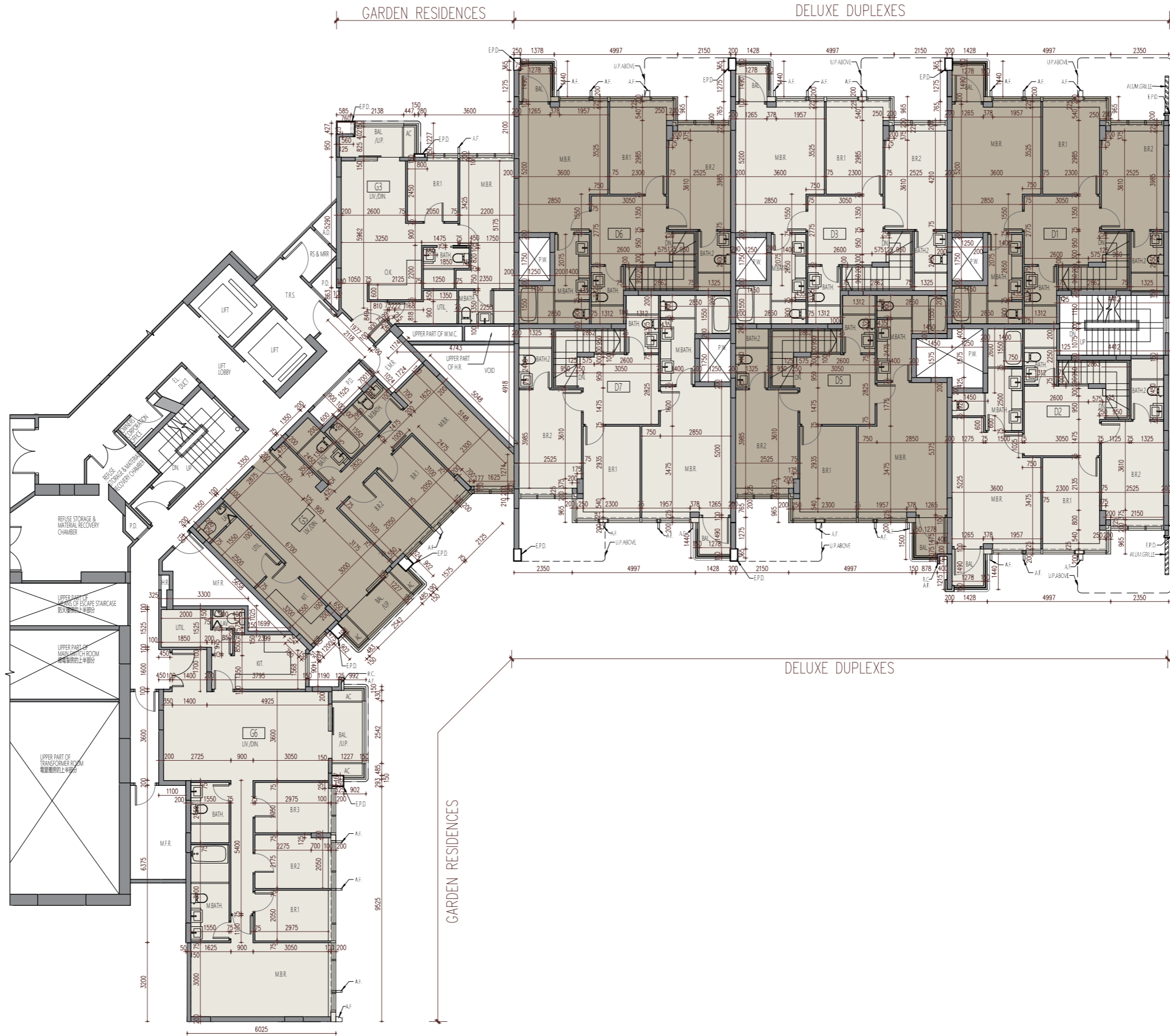
備註:

- 樓面平面圖所列數字為以毫米標示之建築結構尺寸，並以四捨五入至整數。
- 樓面平面圖中顯示之名詞及簡稱之圖例，請參閱本售樓說明書第30頁至第31頁。
- 層與層之間的高度（指該樓層之石屎地台面與上一層石屎地台面之高度距離）包括但不限於：
 - (◇) 當中在該樓層跌級樓板為0.100米的跌級高度；
 - (☆) 當中在該樓層跌級樓板為0.250米的跌級高度；
 - (△) 當中在該樓層跌級樓板為0.350米的跌級高度；
 該等跌級樓板有部分位於該樓層或上一層之石屎地台面。
- 住宅大樓的住宅物業的描述中，字首「D」指Deluxe Duplex單位，而編號指Deluxe Duplex單位的編號。例如「D1」指Deluxe Duplex 1號單位。
- 住宅大樓的住宅物業的描述中，字首「G」指Garden Residence單位，而編號指Garden Residence單位的編號。例如「G1」指Garden Residence 1號單位。

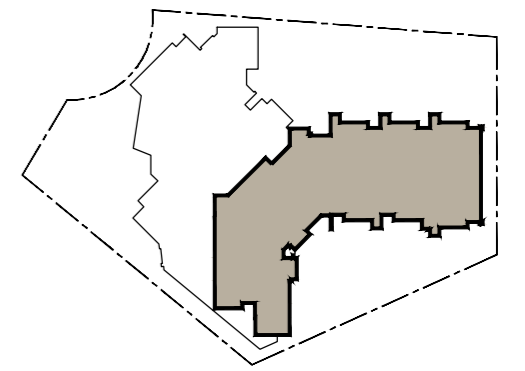
Floor plans of residential properties in the development

發展項目的住宅物業的樓面平面圖

1/F
1樓



KEY PLAN 索引圖



Scale 0 5M(米)
比例

A horizontal scale bar with a vertical line at the 0 mark and a vertical line at the 5M(米) mark. The text 'Scale 0 5M(米)' and '比例' is positioned above and below the bar respectively.

Floor plans of residential properties in the development

發展項目的住宅物業的樓面平面圖

2/F 2樓

Description 描述	Flat 單位												
	D1	D2	D3	D5	D6	D7	E1	E2	E3	G3	G5	G6	
	Duplex Unit (Lower Floor) 複式單位 (下層)												
Floor-to-floor height (refers to the height between the top surface of the structural slab of a floor and the top surface of the structural slab of its immediate upper floor) of each residential property (m) 每個住宅物業的層與層之間的高度 (指該樓層之石屎地台面與上一層石屎地台面之高度距離) (米)	3.100	2.850	3.100	3.100	3.100	3.100				2.675		2.675	
	3.200	2.950	3.200	3.200	3.200	3.200				2.775		2.775	
	3.300◇	3.100	3.200◇	3.200	3.200◇	3.200				2.925		2.925	
	3.450☆	3.200	3.300◇	3.300◇	3.300◇	3.300◇		3.025		3.025	3.025	2.925☆	
	3.450△	3.300◇	3.350☆	3.300◇	3.350☆	3.350☆		3.025△		3.025△	3.025△	3.025	
	3.550△	3.450☆	3.450△	3.450△	3.450△	3.450△		3.025☆		3.025☆	3.025☆	3.025△	
	6.050	3.450△	3.450☆	3.550△	3.450☆	3.450△		3.025◇		3.175☆	3.025◇	3.025☆	
		3.550△	3.550△	6.050	3.550△	3.550△	6.050			3.275☆		3.025◇	
		6.050		6.050					3.275△				
									3.375△				
Thickness of the floor slabs (excluding plaster) of each residential property (mm) 每個住宅物業的樓板 (不包括灰泥) 厚度 (毫米)							150						
							175						

The internal areas of the residential properties on the upper floors will generally be slightly larger than those on the lower floors because of the reducing thickness of the structural walls on the upper floors.

(This statement as required under section 10(2)(e) of Part 1 of Schedule 1 to the Residential Properties (First-hand Sales) Ordinance is not applicable to the Development.)

因住宅物業的較高樓層的結構牆的厚度遞減，較高樓層的內部面積，一般比較低樓層的內部面積稍大。
(此根據《一手住宅物業銷售條例》附表1第1部第10(2)(e)條規定之陳述並不適用於本發展項目。)

Remarks:

- The dimensions in the floor plans are all structural dimensions in millimetre and rounded off to the nearest integer.
- Please refer to Page 30 to Page 31 of this sales brochure for legend of the terms and abbreviations shown in the floor plans.
- The floor-to-floor height (i.e. the height between the top surface of the structural slab of that floor and the top surface of the structured slab of its immediate upper floor) includes, without limitation:
 - ◇ Inclusive of the sunken depth of the sunken slab on the floor of that floor (0.100m);
 - ☆ Inclusive of the sunken depth of the sunken slab on the floor of that floor (0.250m);
 - △ Inclusive of the sunken depth of the sunken slab on the floor of that floor (0.350m);
 those sunken slabs located partly on the structural slab of that floor or its immediate upper floor.
- In the description of residential property in a residential block, the prefix "D" means Deluxe Duplex unit and the numbering means the numbering of Deluxe Duplex unit. E.g. "D1" refers to Deluxe Duplex 1.
- In the description of residential property in a residential block, the prefix "E" means Elite Residence unit and the numbering means the numbering of Elite Residence unit. E.g. "E1" refers to Elite Residence 1.
- In the description of residential property in a residential block, the prefix "G" means Garden Residence unit and the numbering means the numbering of Garden Residence unit. E.g. "G1" refers to Garden Residence 1.

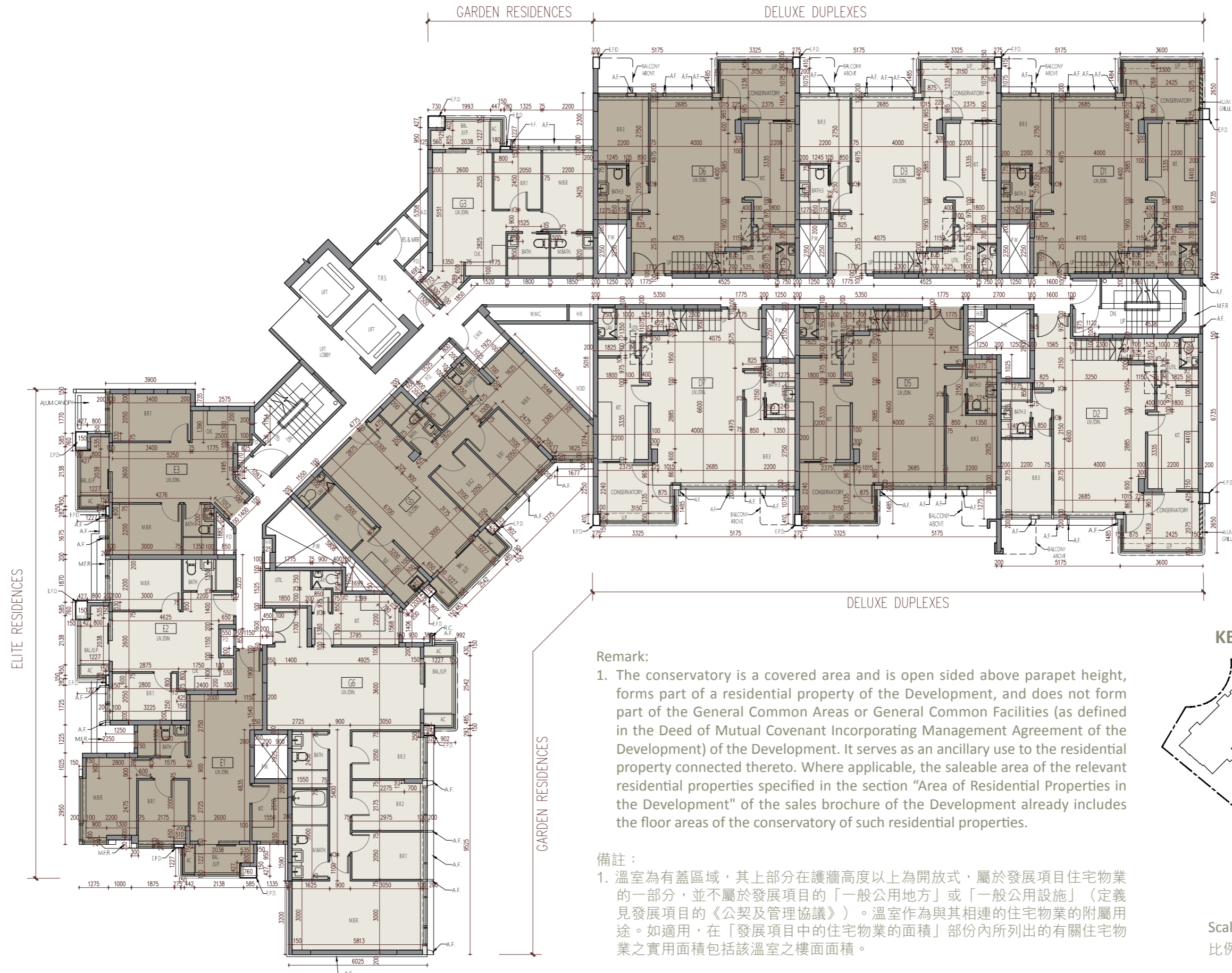
備註:

- 樓面平面圖所列數字為以毫米標示之建築結構尺寸，並以四捨五入至整數。
- 樓面平面圖中顯示之名詞及簡稱之圖例，請參閱本售樓說明書第30頁至第31頁。
- 層與層之間的高度（指該樓層之石屎地台面與上一層石屎地台面之高度距離）包括但不限於：
 - ◇ 當中在該樓層跌級樓板為0.100米的跌級高度；
 - ☆ 當中在該樓層跌級樓板為0.250米的跌級高度；
 - △ 當中在該樓層跌級樓板為0.350米的跌級高度；
 該等跌級樓板有部分位於該樓層或上一層之石屎地台面。
- 住宅大樓的住宅物業的描述中，字首「D」指Deluxe Duplex單位，而編號指Deluxe Duplex單位的編號。例如「D1」指Deluxe Duplex 1號單位。
- 住宅大樓的住宅物業的描述中，字首「E」指Elite Residence單位，而編號指Elite Residence單位的編號。例如「E1」指Elite Residence 1號單位。
- 住宅大樓的住宅物業的描述中，字首「G」指Garden Residence單位，而編號指Garden Residence單位的編號。例如「G1」指Garden Residence 1號單位。

Floor plans of residential properties in the development

發展項目的住宅物業的樓面平面圖

2/F
2樓



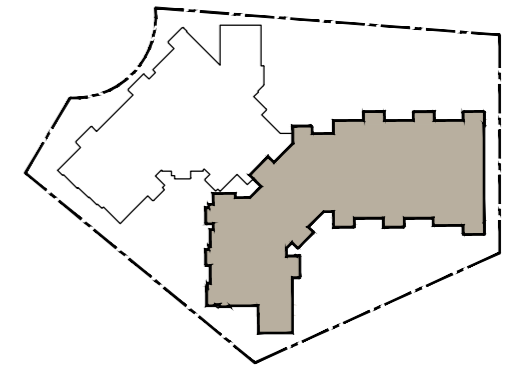
Remark:

1. The conservatory is a covered area and is open sided above parapet height, forms part of a residential property of the Development, and does not form part of the General Common Areas or General Common Facilities (as defined in the Deed of Mutual Covenant Incorporating Management Agreement of the Development) of the Development. It serves as an ancillary use to the residential property connected thereto. Where applicable, the saleable area of the relevant residential properties specified in the section "Area of Residential Properties in the Development" of the sales brochure of the Development already includes the floor areas of the conservatory of such residential properties.

備註:

1. 溫室為有蓋區域，其上部分在護牆高度以上為開放式，屬於發展項目住宅物業的一部分，並不屬於發展項目的「一般公用地方」或「一般公用設施」（定義見發展項目的《公契及管理協議》）。溫室作為與其相連的住宅物業的附屬用途。如適用，在「發展項目中的住宅物業的面積」部份內所列出的有關住宅物業之實用面積包括該溫室之樓面面積。

KEY PLAN 索引圖



Scale 0 5M(米)
比例

Floor plans of residential properties in the development

發展項目的住宅物業的樓面平面圖

2/F 2樓

Description 描述	E5	E6	E7	G1	G2	S1	S2	S3
				Duplex Unit (Lower Floor) 複式單位 (下層)				Duplex Unit (Lower Floor) 複式單位 (下層)
Floor-to-floor height (refers to the height between the top surface of the structural slab of a floor and the top surface of the structural slab of its immediate upper floor) of each residential property (m) 每個住宅物業的層與層之間的高度 (指該樓層之石屎地台面與上一層石屎地台面之高度距離) (米)		3.025 3.025 [△] 3.025 [☆] 3.025 [◇] 3.175		2.950 3.100 3.200 3.200 [☆] 3.300 [△] 3.450 [☆] 3.450 [△] 3.550 [△] 6.050		3.025 3.025 [△] 3.025 [☆] 3.025 [◇]		3.100 3.200 3.300 [◇] 3.450 [☆] 3.450 [△] 3.550 [△] 6.050
Thickness of the floor slabs (excluding plaster) of each residential property (mm) 每個住宅物業的樓板 (不包括灰泥) 厚度 (毫米)				150 175				

The internal areas of the residential properties on the upper floors will generally be slightly larger than those on the lower floors because of the reducing thickness of the structural walls on the upper floors.

(This statement as required under section 10(2)(e) of Part 1 of Schedule 1 to the Residential Properties (First-hand Sales) Ordinance is not applicable to the Development.)

因住宅物業的較高樓層的結構牆的厚度遞減，較高樓層的內部面積，一般比較低樓層的內部面積稍大。
(此根據《一手住宅物業銷售條例》附表1第1部第10(2)(e)條規定之陳述並不適用於本發展項目。)

Remarks:

- The dimensions in the floor plans are all structural dimensions in millimetre and rounded off to the nearest integer.
- Please refer to Page 30 to Page 31 of this sales brochure for legend of the terms and abbreviations shown in the floor plans.
- The floor-to-floor height (i.e. the height between the top surface of the structural slab of that floor and the top surface of the structured slab of its immediate upper floor) includes, without limitation:
 - (◇) Inclusive of the sunken depth of the sunken slab on the floor of that floor (0.100m);
 - (☆) Inclusive of the sunken depth of the sunken slab on the floor of that floor (0.250m);
 - (△) Inclusive of the sunken depth of the sunken slab on the floor of that floor (0.350m);
 those sunken slabs located partly on the structural slab of that floor or its immediate upper floor.
- In the description of residential property in a residential block, the prefix "E" means Elite Residence unit and the numbering means the numbering of Elite Residence unit. E.g. "E1" refers to Elite Residence 1.
- In the description of residential property in a residential block, the prefix "G" means Garden Residence unit and the numbering means the numbering of Garden Residence unit. E.g. "G1" refers to Garden Residence 1.
- In the description of residential property in a residential block, the prefix "S" means Superior Residence unit and the numbering means the numbering of Superior Residence unit. E.g. "S1" refers to Superior Residence 1.

備註:

- 樓面平面圖所列數字為以毫米標示之建築結構尺寸，並以四捨五入至整數。
- 樓面平面圖中顯示之名詞及簡稱之圖例，請參閱本售樓說明書第30頁至第31頁。
- 層與層之間的高度（指該樓層之石屎地台面與上一層石屎地台面之高度距離）包括但不限於：
 - (◇) 當中在該樓層跌級樓板為0.100米的跌級高度；
 - (☆) 當中在該樓層跌級樓板為0.250米的跌級高度；
 - (△) 當中在該樓層跌級樓板為0.350米的跌級高度；
 該等跌級樓板有部分位於該樓層或上一層之石屎地台面。
- 住宅大樓的住宅物業的描述中，字首「E」指Elite Residence單位，而編號指Elite Residence單位的編號。例如「E1」指Elite Residence 1號單位。
- 住宅大樓的住宅物業的描述中，字首「G」指Garden Residence單位，而編號指Garden Residence單位的編號。例如「G1」指Garden Residence 1號單位。
- 住宅大樓的住宅物業的描述中，字首「S」指Superior Residence單位，而編號指Superior Residence單位的編號。例如「S1」指Superior Residence 1號單位。

Floor plans of residential properties in the development

發展項目的住宅物業的樓面平面圖

2/F
2樓



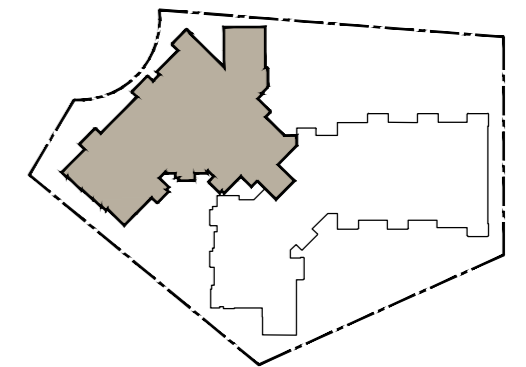
Remark:

1. The conservatory is a covered area and is open sided above parapet height, forms part of a residential property of the Development, and does not form part of the General Common Areas or General Common Facilities (as defined in the Deed of Mutual Covenant Incorporating Management Agreement of the Development) of the Development. It serves as an ancillary use to the residential property connected thereto. Where applicable, the saleable area of the relevant residential properties specified in the section "Area of Residential Properties in the Development" of the sales brochure of the Development already includes the floor areas of the conservatory of such residential properties.

備註：

1. 溫室為有蓋區域，其上部分在護牆高度以上為開放式，屬於發展項目住宅物業的一部分，並不屬於發展項目的「一般公用地方」或「一般公用設施」（定義見發展項目的《公契及管理協議》）。溫室作為與其相連的住宅物業的附屬用途。如適用，在「發展項目中的住宅物業的面積」部份內所列出的有關住宅物業之實用面積包括該溫室之樓面面積。

KEY PLAN 索引圖



Scale 0 5M(米)
比例

Floor plans of residential properties in the development

發展項目的住宅物業的樓面平面圖

3/F 3樓

Description 描述	Flat 單位												
	D1	D2	D3	D5	D6	D7	E1	E2	E3	G3	G5	G6	
	Duplex Unit (Upper Floor) 複式單位 (上層)												
Floor-to-floor height (refers to the height between the top surface of the structural slab of a floor and the top surface of the structural slab of its immediate upper floor) of each residential property (m) 每個住宅物業的層與層之間的高度 (指該樓層之石屎地台面與上一層石屎地台面之高度距離) (米)	2.500 2.600 2.600 [◇] 2.750 2.850 2.950 [◇] 3.100 [☆] 6.050	2.500 2.600 2.600 [◇] 2.750 2.850 2.950 [◇] 3.100 [☆] 3.200 [△] 6.050	2.600 2.600 [◇] 2.700 [◇] 2.750 2.850 2.950 [◇] 3.100 [☆] 3.200 [△] 6.050	2.500 2.600 2.600 [◇] 2.750 2.850 2.950 [◇] 3.100 [☆] 3.200 [△] 6.050	2.600 2.600 [◇] 2.700 [◇] 2.750 2.850 2.950 [◇] 3.100 [☆] 3.200 [△] 6.050	2.500 2.600 2.600 [◇] 2.750 2.850 2.950 [◇] 3.100 [☆] 3.200 [△] 6.050		3.025 3.025 [△] 3.025 [☆] 3.025 [◇]			2.675 2.775 2.775 [◇] 2.875 [◇] 3.025 3.025 [△] 3.025 [☆] 3.125 [◇] 3.275 [☆]		3.025 3.025 [△] 3.025 [☆] 3.025 [◇]
Thickness of the floor slabs (excluding plaster) of each residential property (mm) 每個住宅物業的樓板 (不包括灰泥) 厚度 (毫米)							150 175						

The internal areas of the residential properties on the upper floors will generally be slightly larger than those on the lower floors because of the reducing thickness of the structural walls on the upper floors.

(This statement as required under section 10(2)(e) of Part 1 of Schedule 1 to the Residential Properties (First-hand Sales) Ordinance is not applicable to the Development.)

因住宅物業的較高樓層的結構牆的厚度遞減，較高樓層的內部面積，一般比較低樓層的內部面積稍大。
(此根據《一手住宅物業銷售條例》附表1第1部第10(2)(e)條規定之陳述並不適用於本發展項目。)

Remarks:

- The dimensions in the floor plans are all structural dimensions in millimetre and rounded off to the nearest integer.
- Please refer to Page 30 to Page 31 of this sales brochure for legend of the terms and abbreviations shown in the floor plans.
- The floor-to-floor height (i.e. the height between the top surface of the structural slab of that floor and the top surface of the structured slab of its immediate upper floor) includes, without limitation:
 - (◇) Inclusive of the sunken depth of the sunken slab on the floor of that floor (0.100m);
 - (☆) Inclusive of the sunken depth of the sunken slab on the floor of that floor (0.250m);
 - (△) Inclusive of the sunken depth of the sunken slab on the floor of that floor (0.350m);
 those sunken slabs located partly on the structural slab of that floor or its immediate upper floor.
- In the description of residential property in a residential block, the prefix "D" means Deluxe Duplex unit and the numbering means the numbering of Deluxe Duplex unit. E.g. "D1" refers to Deluxe Duplex 1.
- In the description of residential property in a residential block, the prefix "E" means Elite Residence unit and the numbering means the numbering of Elite Residence unit. E.g. "E1" refers to Elite Residence 1.
- In the description of residential property in a residential block, the prefix "G" means Garden Residence unit and the numbering means the numbering of Garden Residence unit. E.g. "G1" refers to Garden Residence 1.

備註:

- 樓面平面圖所列數字為以毫米標示之建築結構尺寸，並以四捨五入至整數。
- 樓面平面圖中顯示之名詞及簡稱之圖例，請參閱本售樓說明書第30頁至第31頁。
- 層與層之間的高度（指該樓層之石屎地台面與上一層石屎地台面之高度距離）包括但不限於：
 - (◇) 當中在該樓層跌級樓板為0.100米的跌級高度；
 - (☆) 當中在該樓層跌級樓板為0.250米的跌級高度；
 - (△) 當中在該樓層跌級樓板為0.350米的跌級高度；
 該等跌級樓板有部分位於該樓層或上一層之石屎地台面。
- 住宅大樓的住宅物業的描述中，字首「D」指Deluxe Duplex單位，而編號指Deluxe Duplex單位的編號。例如「D1」指Deluxe Duplex 1號單位。
- 住宅大樓的住宅物業的描述中，字首「E」指Elite Residence單位，而編號指Elite Residence單位的編號。例如「E1」指Elite Residence 1號單位。
- 住宅大樓的住宅物業的描述中，字首「G」指Garden Residence單位，而編號指Garden Residence單位的編號。例如「G1」指Garden Residence 1號單位。

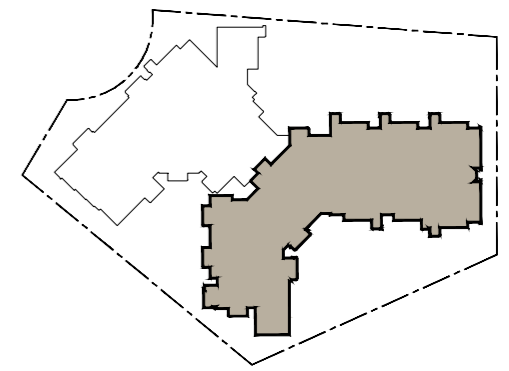
Floor plans of residential properties in the development

發展項目的住宅物業的樓面平面圖

3/F
3樓



KEY PLAN 索引圖



Scale 0 5M(米)
比例

Floor plans of residential properties in the development

發展項目的住宅物業的樓面平面圖

3/F 3樓

Description 描述	Flat 單位							
	E5	E6	E7	G1	G2	S1	S2	S3
				Duplex Unit (Upper Floor) 複式單位 (上層)				Duplex Unit (Upper Floor) 複式單位 (上層)
<p style="text-align: center;">Floor-to-floor height (refers to the height between the top surface of the structural slab of a floor and the top surface of the structural slab of its immediate upper floor) of each residential property (m) 每個住宅物業的層與層之間的高度 (指該樓層之石屎地台面與上一層石屎地台面之高度距離) (米)</p>		3.025 3.025 [△] 3.025 [☆] 3.025 [◇]		2.500 2.600 2.600 [◇] 2.750 [☆] 2.850 2.850 [☆] 2.950 [◇] 3.100 [☆] 6.050		3.025 3.025 [△] 3.025 [☆] 3.025 [◇]		2.500 2.600 2.600 [◇] 2.750 2.850 2.950 [◇] 3.100 [☆] 6.050
<p style="text-align: center;">Thickness of the floor slabs (excluding plaster) of each residential property (mm) 每個住宅物業的樓板 (不包括灰泥) 厚度 (毫米)</p>	150 175							

The internal areas of the residential properties on the upper floors will generally be slightly larger than those on the lower floors because of the reducing thickness of the structural walls on the upper floors.

(This statement as required under section 10(2)(e) of Part 1 of Schedule 1 to the Residential Properties (First-hand Sales) Ordinance is not applicable to the Development.)

因住宅物業的較高樓層的結構牆的厚度遞減，較高樓層的內部面積，一般比較低樓層的內部面積稍大。
(此根據《一手住宅物業銷售條例》附表1第1部第10(2)(e)條規定之陳述並不適用於本發展項目。)

Remarks:

- The dimensions in the floor plans are all structural dimensions in millimetre and rounded off to the nearest integer.
- Please refer to Page 30 to Page 31 of this sales brochure for legend of the terms and abbreviations shown in the floor plans.
- The floor-to-floor height (i.e. the height between the top surface of the structural slab of that floor and the top surface of the structured slab of its immediate upper floor) includes, without limitation:
 - (◇) Inclusive of the sunken depth of the sunken slab on the floor of that floor (0.100m);
 - (☆) Inclusive of the sunken depth of the sunken slab on the floor of that floor (0.250m);
 - (△) Inclusive of the sunken depth of the sunken slab on the floor of that floor (0.350m);
 those sunken slabs located partly on the structural slab of that floor or its immediate upper floor.
- In the description of residential property in a residential block, the prefix "E" means Elite Residence unit and the numbering means the numbering of Elite Residence unit. E.g. "E1" refers to Elite Residence 1.
- In the description of residential property in a residential block, the prefix "G" means Garden Residence unit and the numbering means the numbering of Garden Residence unit. E.g. "G1" refers to Garden Residence 1.
- In the description of residential property in a residential block, the prefix "S" means Superior Residence unit and the numbering means the numbering of Superior Residence unit. E.g. "S1" refers to Superior Residence 1.

備註:

- 樓面平面圖所列數字為以毫米標示之建築結構尺寸，並以四捨五入至整數。
- 樓面平面圖中顯示之名詞及簡稱之圖例，請參閱本售樓說明書第30頁至第31頁。
- 層與層之間的高度（指該樓層之石屎地台面與上一層石屎地台面之高度距離）包括但不限於：
 - (◇) 當中在該樓層跌級樓板為0.100米的跌級高度；
 - (☆) 當中在該樓層跌級樓板為0.250米的跌級高度；
 - (△) 當中在該樓層跌級樓板為0.350米的跌級高度；
 該等跌級樓板有部分位於該樓層或上一層之石屎地台面。
- 住宅大樓的住宅物業的描述中，字首「E」指Elite Residence單位，而編號指Elite Residence單位的編號。例如「E1」指Elite Residence 1號單位。
- 住宅大樓的住宅物業的描述中，字首「G」指Garden Residence單位，而編號指Garden Residence單位的編號。例如「G1」指Garden Residence 1號單位。
- 住宅大樓的住宅物業的描述中，字首「S」指Superior Residence單位，而編號指Superior Residence單位的編號。例如「S1」指Superior Residence 1號單位。

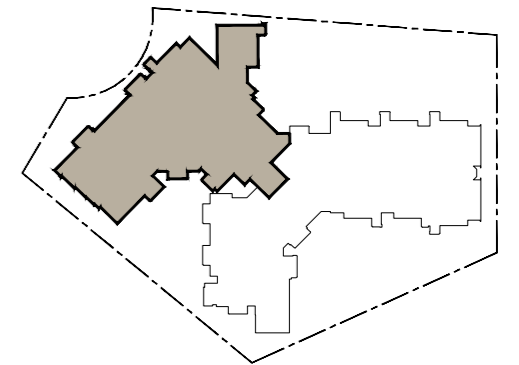
Floor plans of residential properties in the development

發展項目的住宅物業的樓面平面圖

3/F
3樓



KEY PLAN 索引圖



Scale 0 5M(米)
比例

Floor plans of residential properties in the development

發展項目的住宅物業的樓面平面圖

5/F 5樓

Description 描述	Flat 單位												
	D1	D2	D3	D5	D6	D7	E1	E2	E3	G3	G5	G6	
	Duplex Unit (Lower Floor) 複式單位 (下層)												
Floor-to-floor height (refers to the height between the top surface of the structural slab of a floor and the top surface of the structural slab of its immediate upper floor) of each residential property (m) 每個住宅物業的層與層之間的高度 (指該樓層之石屎地台面與上一層石屎地台面之高度距離) (米)	3.100	2.850	3.100	3.100	3.100	3.100				2.675			
	3.200	2.950	3.200	3.200	3.200	3.200				2.775			
	3.300 [◇]	3.100	3.300 [◇]	3.300 [◇]	3.300 [◇]	3.300 [◇]				2.925			
	3.450 [☆]	3.200	3.350 [☆]	3.350 [☆]	3.350 [☆]	3.350 [☆]		3.025		3.025		3.025	
	3.450 [△]	3.300 [◇]	3.450 [△]	3.450 [△]	3.450 [△]	3.450 [△]		3.025 [△]		3.025 [△]		3.025 [△]	
	3.550 [△]	3.450 [☆]	3.450 [☆]	3.450 [☆]	3.450 [☆]	3.450 [☆]		3.025 [☆]		3.025 [☆]		3.025 [☆]	
	6.050	3.450 [△]	3.550 [△]	3.550 [△]	3.550 [△]	3.550 [△]		3.025 [◇]		3.175 [☆]		3.025 [◇]	
		3.550 [△]	6.050	6.050	6.050	6.050				3.275 [☆]			
		6.050							3.375 [△]				
Thickness of the floor slabs (excluding plaster) of each residential property (mm) 每個住宅物業的樓板 (不包括灰泥) 厚度 (毫米)							150						
							175						

The internal areas of the residential properties on the upper floors will generally be slightly larger than those on the lower floors because of the reducing thickness of the structural walls on the upper floors.

(This statement as required under section 10(2)(e) of Part 1 of Schedule 1 to the Residential Properties (First-hand Sales) Ordinance is not applicable to the Development.)

因住宅物業的較高樓層的結構牆的厚度遞減，較高樓層的內部面積，一般比較低樓層的內部面積稍大。
(此根據《一手住宅物業銷售條例》附表1第1部第10(2)(e)條規定之陳述並不適用於本發展項目。)

Remarks:

- The dimensions in the floor plans are all structural dimensions in millimetre and rounded off to the nearest integer.
- Please refer to Page 30 to Page 31 of this sales brochure for legend of the terms and abbreviations shown in the floor plans.
- The floor-to-floor height (i.e. the height between the top surface of the structural slab of that floor and the top surface of the structured slab of its immediate upper floor) includes, without limitation:
 - (◇) Inclusive of the sunken depth of the sunken slab on the floor of that floor (0.100m);
 - (☆) Inclusive of the sunken depth of the sunken slab on the floor of that floor (0.250m);
 - (△) Inclusive of the sunken depth of the sunken slab on the floor of that floor (0.350m);
 those sunken slabs located partly on the structural slab of that floor or its immediate upper floor.
- In the description of residential property in a residential block, the prefix "D" means Deluxe Duplex unit and the numbering means the numbering of Deluxe Duplex unit. E.g. "D1" refers to Deluxe Duplex 1.
- In the description of residential property in a residential block, the prefix "E" means Elite Residence unit and the numbering means the numbering of Elite Residence unit. E.g. "E1" refers to Elite Residence 1.
- In the description of residential property in a residential block, the prefix "G" means Garden Residence unit and the numbering means the numbering of Garden Residence unit. E.g. "G1" refers to Garden Residence 1.

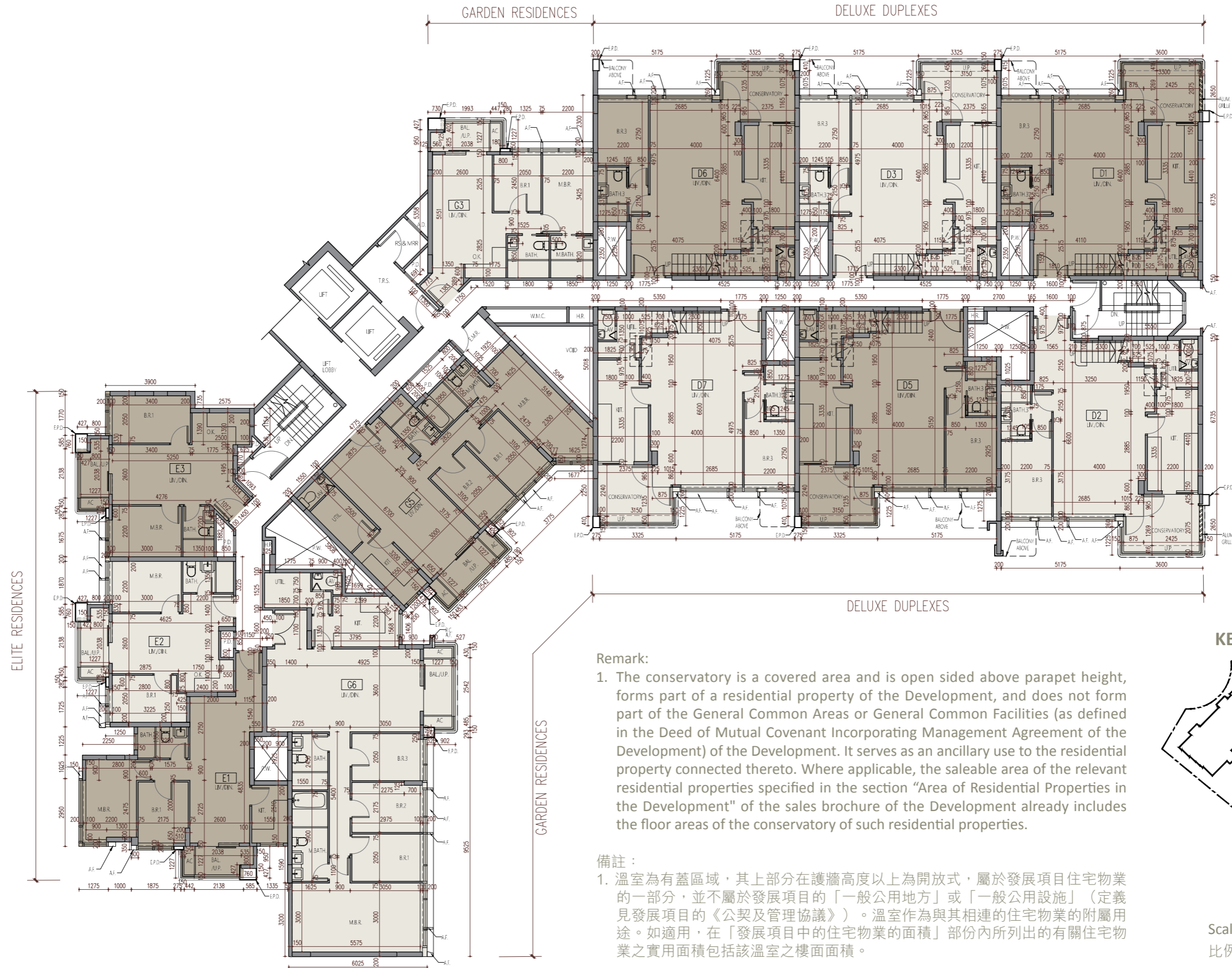
備註:

- 樓面平面圖所列數字為以毫米標示之建築結構尺寸，並以四捨五入至整數。
- 樓面平面圖中顯示之名詞及簡稱之圖例，請參閱本售樓說明書第30頁至第31頁。
- 層與層之間的高度（指該樓層之石屎地台面與上一層石屎地台面之高度距離）包括但不限於：
 - (◇) 當中在該樓層跌級樓板為0.100米的跌級高度；
 - (☆) 當中在該樓層跌級樓板為0.250米的跌級高度；
 - (△) 當中在該樓層跌級樓板為0.350米的跌級高度；
 該等跌級樓板有部分位於該樓層或上一層之石屎地台面。
- 住宅大樓的住宅物業的描述中，字首「D」指Deluxe Duplex單位，而編號指Deluxe Duplex單位的編號。例如「D1」指Deluxe Duplex 1號單位。
- 住宅大樓的住宅物業的描述中，字首「E」指Elite Residence單位，而編號指Elite Residence單位的編號。例如「E1」指Elite Residence 1號單位。
- 住宅大樓的住宅物業的描述中，字首「G」指Garden Residence單位，而編號指Garden Residence單位的編號。例如「G1」指Garden Residence 1號單位。

Floor plans of residential properties in the development

發展項目的住宅物業的樓面平面圖

5/F
5樓



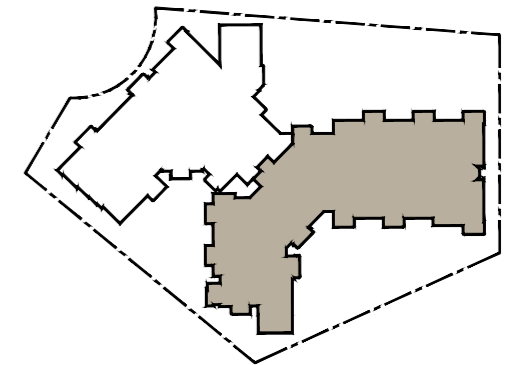
Remark:

1. The conservatory is a covered area and is open sided above parapet height, forms part of a residential property of the Development, and does not form part of the General Common Areas or General Common Facilities (as defined in the Deed of Mutual Covenant Incorporating Management Agreement of the Development) of the Development. It serves as an ancillary use to the residential property connected thereto. Where applicable, the saleable area of the relevant residential properties specified in the section "Area of Residential Properties in the Development" of the sales brochure of the Development already includes the floor areas of the conservatory of such residential properties.

備註:

1. 溫室為有蓋區域，其上部分在護牆高度以上為開放式，屬於發展項目住宅物業的一部分，並不屬於發展項目的「一般公用地方」或「一般公用設施」（定義見發展項目的《公契及管理協議》）。溫室作為與其相連的住宅物業的附屬用途。如適用，在「發展項目中的住宅物業的面積」部份內所列出的有關住宅物業之實用面積包括該溫室之樓面面積。

KEY PLAN 索引圖



Scale 0 5M(米)
比例

Floor plans of residential properties in the development

發展項目的住宅物業的樓面平面圖

5/F
5樓

Description 描述	Flat 單位							
	E5	E6	E7	G1	G2	S1	S2	S3
				Duplex Unit (Lower Floor) 複式單位 (下層)				Duplex Unit (Lower Floor) 複式單位 (下層)
<p style="text-align: center;">Floor-to-floor height (refers to the height between the top surface of the structural slab of a floor and the top surface of the structural slab of its immediate upper floor) of each residential property (m) 每個住宅物業的層與層之間的高度 (指該樓層之石屎地台面與上一層石屎地台面之高度距離) (米)</p>		3.025		2.950 3.100 3.200 3.200 [☆] 3.300 [△] 3.450 [☆] 3.450 [△] 3.550 [△] 6.050		3.025 3.025 [△] 3.025 [☆] 3.025 [◇]		3.100 3.200 3.300 [◇] 3.450 [☆] 3.450 [△] 3.550 [△] 6.050
<p style="text-align: center;">Thickness of the floor slabs (excluding plaster) of each residential property (mm) 每個住宅物業的樓板 (不包括灰泥) 厚度 (毫米)</p>	150 175							

The internal areas of the residential properties on the upper floors will generally be slightly larger than those on the lower floors because of the reducing thickness of the structural walls on the upper floors.

(This statement as required under section 10(2)(e) of Part 1 of Schedule 1 to the Residential Properties (First-hand Sales) Ordinance is not applicable to the Development.)

因住宅物業的較高樓層的結構牆的厚度遞減，較高樓層的內部面積，一般比較低樓層的內部面積稍大。
(此根據《一手住宅物業銷售條例》附表1第1部第10(2)(e)條規定之陳述並不適用於本發展項目。)

Remarks:

- The dimensions in the floor plans are all structural dimensions in millimetre and rounded off to the nearest integer.
- Please refer to Page 30 to Page 31 of this sales brochure for legend of the terms and abbreviations shown in the floor plans.
- The floor-to-floor height (i.e. the height between the top surface of the structural slab of that floor and the top surface of the structured slab of its immediate upper floor) includes, without limitation:
 - (◇) Inclusive of the sunken depth of the sunken slab on the floor of that floor (0.100m);
 - (☆) Inclusive of the sunken depth of the sunken slab on the floor of that floor (0.250m);
 - (△) Inclusive of the sunken depth of the sunken slab on the floor of that floor (0.350m);
 those sunken slabs located partly on the structural slab of that floor or its immediate upper floor.
- In the description of residential property in a residential block, the prefix "E" means Elite Residence unit and the numbering means the numbering of Elite Residence unit. E.g. "E1" refers to Elite Residence 1.
- In the description of residential property in a residential block, the prefix "G" means Garden Residence unit and the numbering means the numbering of Garden Residence unit. E.g. "G1" refers to Garden Residence 1.
- In the description of residential property in a residential block, the prefix "S" means Superior Residence unit and the numbering means the numbering of Superior Residence unit. E.g. "S1" refers to Superior Residence 1.

備註:

- 樓面平面圖所列數字為以毫米標示之建築結構尺寸，並以四捨五入至整數。
- 樓面平面圖中顯示之名詞及簡稱之圖例，請參閱本售樓說明書第30頁至第31頁。
- 層與層之間的高度（指該樓層之石屎地台面與上一層石屎地台面之高度距離）包括但不限於：
 - (◇) 當中在該樓層跌級樓板為0.100米的跌級高度；
 - (☆) 當中在該樓層跌級樓板為0.250米的跌級高度；
 - (△) 當中在該樓層跌級樓板為0.350米的跌級高度；
 該等跌級樓板有部分位於該樓層或上一層之石屎地台面。
- 住宅大樓的住宅物業的描述中，字首「E」指Elite Residence單位，而編號指Elite Residence單位的編號。例如「E1」指Elite Residence 1號單位。
- 住宅大樓的住宅物業的描述中，字首「G」指Garden Residence單位，而編號指Garden Residence單位的編號。例如「G1」指Garden Residence 1號單位。
- 住宅大樓的住宅物業的描述中，字首「S」指Superior Residence單位，而編號指Superior Residence單位的編號。例如「S1」指Superior Residence 1號單位。

Floor plans of residential properties in the development

發展項目的住宅物業的樓面平面圖

5/F
5樓



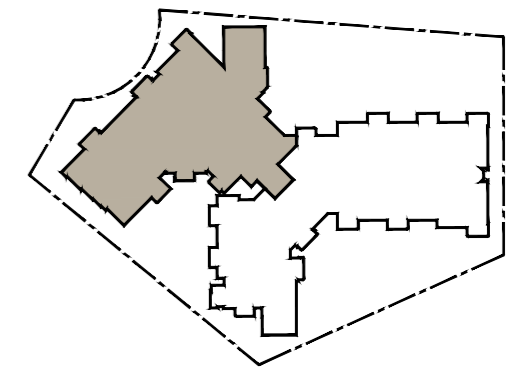
Remark:

1. The conservatory is a covered area and is open sided above parapet height, forms part of a residential property of the Development, and does not form part of the General Common Areas or General Common Facilities (as defined in the Deed of Mutual Covenant Incorporating Management Agreement of the Development) of the Development. It serves as an ancillary use to the residential property connected thereto. Where applicable, the saleable area of the relevant residential properties specified in the section "Area of Residential Properties in the Development" of the sales brochure of the Development already includes the floor areas of the conservatory of such residential properties.

備註：

1. 溫室為有蓋區域，其上部分在護牆高度以上為開放式，屬於發展項目住宅物業的一部分，並不屬於發展項目的「一般公用地方」或「一般公用設施」（定義見發展項目的《公契及管理協議》）。溫室作為與其相連的住宅物業的附屬用途。如適用，在「發展項目中的住宅物業的面積」部份內所列出的有關住宅物業之實用面積包括該溫室之樓面面積。

KEY PLAN 索引圖



Scale 0 5M(米)
比例

Floor plans of residential properties in the development

發展項目的住宅物業的樓面平面圖

6/F 6樓

Description 描述	Flat 單位												
	D1	D2	D3	D5	D6	D7	E1	E2	E3	G3	G5	G6	
	Duplex Unit (Upper Floor) 複式單位 (上層)												
Floor-to-floor height (refers to the height between the top surface of the structural slab of a floor and the top surface of the structural slab of its immediate upper floor) of each residential property (m) 每個住宅物業的層與層之間的高度 (指該樓層之石屎地台面與上一層石屎地台面之高度距離) (米)	2.500	2.500	2.600	2.500	2.600	2.500				2.675			
	2.600	2.600	2.600◇	2.600	2.600◇	2.600				2.775			
	2.600◇	2.600◇	2.700◇	2.600◇	2.700◇	2.600◇				2.775◇		3.025	
	2.750	2.750	2.750	2.750	2.750	2.750		3.025		2.875◇		3.025△	
	2.850	2.850	2.850	2.850	2.850	2.850		3.025△		3.025		3.025☆	
	2.950◇	2.950◇	2.950◇	2.950◇	2.950◇	2.950◇		3.025☆		3.025△		3.025☆	
	3.100☆	3.100☆	3.100☆	3.100☆	3.100☆	3.100☆		3.025◇		3.025☆		3.025◇	
	6.050	3.200△	3.100☆	3.200△	3.200△	3.200△				3.125◇			
		6.050	6.050	6.050	6.050	6.050				3.275☆			
Thickness of the floor slabs (excluding plaster) of each residential property (mm) 每個住宅物業的樓板 (不包括灰泥) 厚度 (毫米)							150						
							175						

The internal areas of the residential properties on the upper floors will generally be slightly larger than those on the lower floors because of the reducing thickness of the structural walls on the upper floors.

(This statement as required under section 10(2)(e) of Part 1 of Schedule 1 to the Residential Properties (First-hand Sales) Ordinance is not applicable to the Development.)

因住宅物業的較高樓層的結構牆的厚度遞減，較高樓層的內部面積，一般比較低樓層的內部面積稍大。
(此根據《一手住宅物業銷售條例》附表1第1部第10(2)(e)條規定之陳述並不適用於本發展項目。)

Remarks:

- The dimensions in the floor plans are all structural dimensions in millimetre and rounded off to the nearest integer.
- Please refer to Page 30 to Page 31 of this sales brochure for legend of the terms and abbreviations shown in the floor plans.
- The floor-to-floor height (i.e. the height between the top surface of the structural slab of that floor and the top surface of the structured slab of its immediate upper floor) includes, without limitation:
 - (◇) Inclusive of the sunken depth of the sunken slab on the floor of that floor (0.100m);
 - (☆) Inclusive of the sunken depth of the sunken slab on the floor of that floor (0.250m);
 - (△) Inclusive of the sunken depth of the sunken slab on the floor of that floor (0.350m);
 those sunken slabs located partly on the structural slab of that floor or its immediate upper floor.
- In the description of residential property in a residential block, the prefix "D" means Deluxe Duplex unit and the numbering means the numbering of Deluxe Duplex unit. E.g. "D1" refers to Deluxe Duplex 1.
- In the description of residential property in a residential block, the prefix "E" means Elite Residence unit and the numbering means the numbering of Elite Residence unit. E.g. "E1" refers to Elite Residence 1.
- In the description of residential property in a residential block, the prefix "G" means Garden Residence unit and the numbering means the numbering of Garden Residence unit. E.g. "G1" refers to Garden Residence 1.

備註:

- 樓面平面圖所列數字為以毫米標示之建築結構尺寸，並以四捨五入至整數。
- 樓面平面圖中顯示之名詞及簡稱之圖例，請參閱本售樓說明書第30頁至第31頁。
- 層與層之間的高度（指該樓層之石屎地台面與上一層石屎地台面之高度距離）包括但不限於：
 - (◇) 當中在該樓層跌級樓板為0.100米的跌級高度；
 - (☆) 當中在該樓層跌級樓板為0.250米的跌級高度；
 - (△) 當中在該樓層跌級樓板為0.350米的跌級高度；
 該等跌級樓板有部分位於該樓層或上一層之石屎地台面。
- 住宅大樓的住宅物業的描述中，字首「D」指Deluxe Duplex單位，而編號指Deluxe Duplex單位的編號。例如「D1」指Deluxe Duplex 1號單位。
- 住宅大樓的住宅物業的描述中，字首「E」指Elite Residence單位，而編號指Elite Residence單位的編號。例如「E1」指Elite Residence 1號單位。
- 住宅大樓的住宅物業的描述中，字首「G」指Garden Residence單位，而編號指Garden Residence單位的編號。例如「G1」指Garden Residence 1號單位。

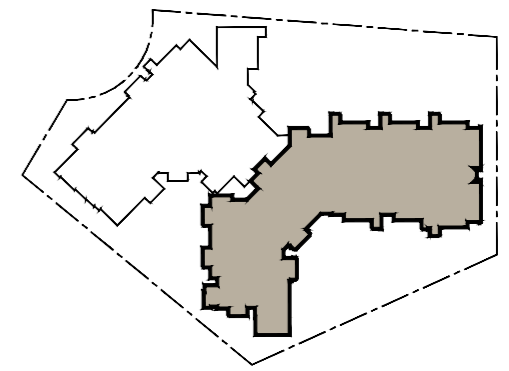
Floor plans of residential properties in the development

發展項目的住宅物業的樓面平面圖

6/F
6樓



KEY PLAN 索引圖



Scale 0 5M(米)
比例

Floor plans of residential properties in the development

發展項目的住宅物業的樓面平面圖

6/F 6樓

Description 描述	Flat 單位							
	E5	E6	E7	G1	G2	S1	S2	S3
				Duplex Unit (Upper Floor) 複式單位 (上層)				Duplex Unit (Upper Floor) 複式單位 (上層)
Floor-to-floor height (refers to the height between the top surface of the structural slab of a floor and the top surface of the structural slab of its immediate upper floor) of each residential property (m) 每個住宅物業的層與層之間的高度 (指該樓層之石屎地台面與上一層石屎地台面之高度距離) (米)		3.025 3.025 [△] 3.025 [☆] 3.025 [◇]		2.500 2.600 2.600 [◇] 2.750 [☆] 2.850 2.850 [☆] 2.950 [◇] 3.100 [☆] 6.050		3.025 3.025 [△] 3.025 [☆] 3.025 [◇]		2.500 2.600 2.600 [◇] 2.750 2.850 2.950 [◇] 3.100 [☆] 6.050
Thickness of the floor slabs (excluding plaster) of each residential property (mm) 每個住宅物業的樓板 (不包括灰泥) 厚度 (毫米)				150 175				

The internal areas of the residential properties on the upper floors will generally be slightly larger than those on the lower floors because of the reducing thickness of the structural walls on the upper floors.

(This statement as required under section 10(2)(e) of Part 1 of Schedule 1 to the Residential Properties (First-hand Sales) Ordinance is not applicable to the Development.)

因住宅物業的較高樓層的結構牆的厚度遞減，較高樓層的內部面積，一般比較低樓層的內部面積稍大。
(此根據《一手住宅物業銷售條例》附表1第1部第10(2)(e)條規定之陳述並不適用於本發展項目。)

Remarks:

- The dimensions in the floor plans are all structural dimensions in millimetre and rounded off to the nearest integer.
- Please refer to Page 30 to Page 31 of this sales brochure for legend of the terms and abbreviations shown in the floor plans.
- The floor-to-floor height (i.e. the height between the top surface of the structural slab of that floor and the top surface of the structured slab of its immediate upper floor) includes, without limitation:
 - (◇) Inclusive of the sunken depth of the sunken slab on the floor of that floor (0.100m);
 - (☆) Inclusive of the sunken depth of the sunken slab on the floor of that floor (0.250m);
 - (△) Inclusive of the sunken depth of the sunken slab on the floor of that floor (0.350m);
 those sunken slabs located partly on the structural slab of that floor or its immediate upper floor.
- In the description of residential property in a residential block, the prefix "E" means Elite Residence unit and the numbering means the numbering of Elite Residence unit. E.g. "E1" refers to Elite Residence 1.
- In the description of residential property in a residential block, the prefix "G" means Garden Residence unit and the numbering means the numbering of Garden Residence unit. E.g. "G1" refers to Garden Residence 1.
- In the description of residential property in a residential block, the prefix "S" means Superior Residence unit and the numbering means the numbering of Superior Residence unit. E.g. "S1" refers to Superior Residence 1.

備註:

- 樓面平面圖所列數字為以毫米標示之建築結構尺寸，並以四捨五入至整數。
- 樓面平面圖中顯示之名詞及簡稱之圖例，請參閱本售樓說明書第30頁至第31頁。
- 層與層之間的高度（指該樓層之石屎地台面與上一層石屎地台面之高度距離）包括但不限於：
 - (◇) 當中在該樓層跌級樓板為0.100米的跌級高度；
 - (☆) 當中在該樓層跌級樓板為0.250米的跌級高度；
 - (△) 當中在該樓層跌級樓板為0.350米的跌級高度；
 該等跌級樓板有部分位於該樓層或上一層之石屎地台面。
- 住宅大樓的住宅物業的描述中，字首「E」指Elite Residence單位，而編號指Elite Residence單位的編號。例如「E1」指Elite Residence 1號單位。
- 住宅大樓的住宅物業的描述中，字首「G」指Garden Residence單位，而編號指Garden Residence單位的編號。例如「G1」指Garden Residence 1號單位。
- 住宅大樓的住宅物業的描述中，字首「S」指Superior Residence單位，而編號指Superior Residence單位的編號。例如「S1」指Superior Residence 1號單位。

Floor plans of residential properties in the development

發展項目的住宅物業的樓面平面圖

7/F 7樓

Description 描述	Flat 單位												
	D1	D2	D3	D5	D6	D7	E1	E2	E3	G3	G5	G6	
	Duplex Unit (Lower Floor) 複式單位 (下層)												
Floor-to-floor height (refers to the height between the top surface of the structural slab of a floor and the top surface of the structural slab of its immediate upper floor) of each residential property (m) 每個住宅物業的層與層之間的高度 (指該樓層之石屎地台面與上一層石屎地台面之高度距離) (米)		3.100 3.200 3.300 [◇] 3.450 [☆] 3.450 [△] 3.550 [△] 6.150			3.100 3.200 3.450 [☆] 3.450 [△] 3.550 [△] 6.150	3.100 3.200 3.300 [◇] 3.450 [☆] 3.450 [△] 3.550 [△] 6.150		3.025 3.025 [△] 3.025 [☆] 3.025 [◇]			2.675 2.775 2.925 3.025 3.025 [△] 3.025 [☆] 3.175 [☆] 3.275 [△] 3.375 [△]		3.025 3.025 [△] 3.025 [☆] 3.025 [◇]
Thickness of the floor slabs (excluding plaster) of each residential property (mm) 每個住宅物業的樓板 (不包括灰泥) 厚度 (毫米)							150 175						

The internal areas of the residential properties on the upper floors will generally be slightly larger than those on the lower floors because of the reducing thickness of the structural walls on the upper floors.

(This statement as required under section 10(2)(e) of Part 1 of Schedule 1 to the Residential Properties (First-hand Sales) Ordinance is not applicable to the Development.)

因住宅物業的較高樓層的結構牆的厚度遞減，較高樓層的內部面積，一般比較低樓層的內部面積稍大。
(此根據《一手住宅物業銷售條例》附表1第1部第10(2)(e)條規定之陳述並不適用於本發展項目。)

Remarks:

- The dimensions in the floor plans are all structural dimensions in millimetre and rounded off to the nearest integer.
- Please refer to Page 30 to Page 31 of this sales brochure for legend of the terms and abbreviations shown in the floor plans.
- The floor-to-floor height (i.e. the height between the top surface of the structural slab of that floor and the top surface of the structured slab of its immediate upper floor) includes, without limitation:
 - (◇) Inclusive of the sunken depth of the sunken slab on the floor of that floor (0.100m);
 - (☆) Inclusive of the sunken depth of the sunken slab on the floor of that floor (0.250m);
 - (△) Inclusive of the sunken depth of the sunken slab on the floor of that floor (0.350m);
 those sunken slabs located partly on the structural slab of that floor or its immediate upper floor.
- In the description of residential property in a residential block, the prefix "D" means Deluxe Duplex unit and the numbering means the numbering of Deluxe Duplex unit. E.g. "D1" refers to Deluxe Duplex 1.
- In the description of residential property in a residential block, the prefix "E" means Elite Residence unit and the numbering means the numbering of Elite Residence unit. E.g. "E1" refers to Elite Residence 1.
- In the description of residential property in a residential block, the prefix "G" means Garden Residence unit and the numbering means the numbering of Garden Residence unit. E.g. "G1" refers to Garden Residence 1.

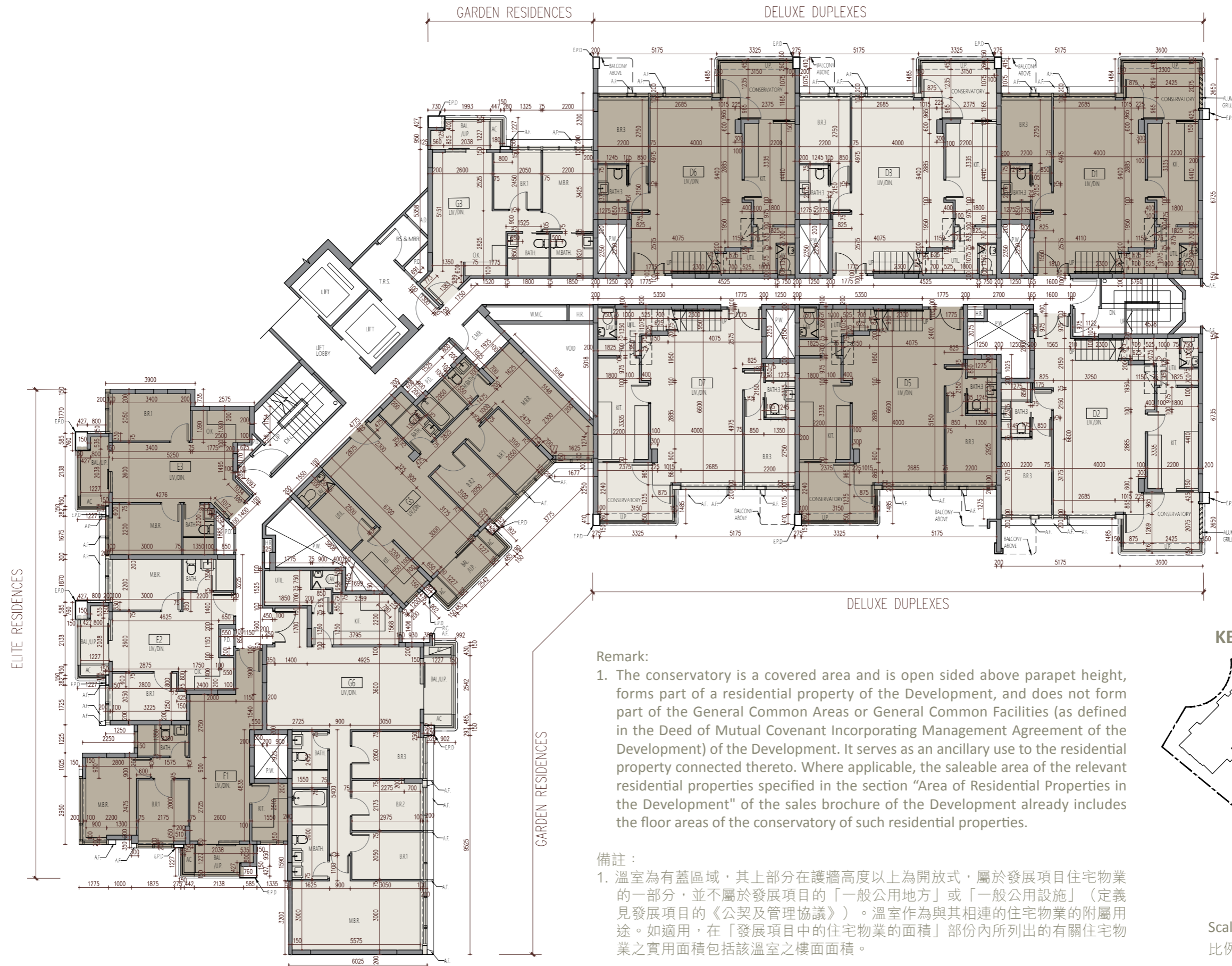
備註:

- 樓面平面圖所列數字為以毫米標示之建築結構尺寸，並以四捨五入至整數。
- 樓面平面圖中顯示之名詞及簡稱之圖例，請參閱本售樓說明書第30頁至第31頁。
- 層與層之間的高度（指該樓層之石屎地台面與上一層石屎地台面之高度距離）包括但不限於：
 - (◇) 當中在該樓層跌級樓板為0.100米的跌級高度；
 - (☆) 當中在該樓層跌級樓板為0.250米的跌級高度；
 - (△) 當中在該樓層跌級樓板為0.350米的跌級高度；
 該等跌級樓板有部分位於該樓層或上一層之石屎地台面。
- 住宅大樓的住宅物業的描述中，字首「D」指Deluxe Duplex單位，而編號指Deluxe Duplex單位的編號。例如「D1」指Deluxe Duplex 1號單位。
- 住宅大樓的住宅物業的描述中，字首「E」指Elite Residence單位，而編號指Elite Residence單位的編號。例如「E1」指Elite Residence 1號單位。
- 住宅大樓的住宅物業的描述中，字首「G」指Garden Residence單位，而編號指Garden Residence單位的編號。例如「G1」指Garden Residence 1號單位。

Floor plans of residential properties in the development

發展項目的住宅物業的樓面平面圖

7/F
7樓



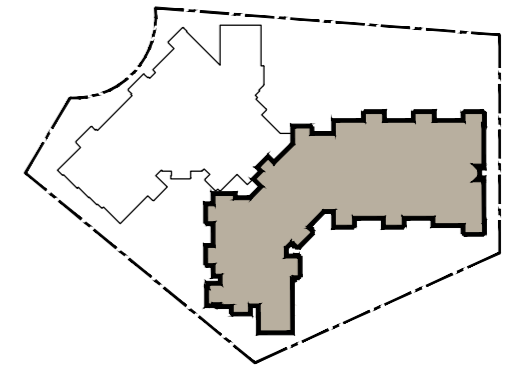
Remark:

1. The conservatory is a covered area and is open sided above parapet height, forms part of a residential property of the Development, and does not form part of the General Common Areas or General Common Facilities (as defined in the Deed of Mutual Covenant Incorporating Management Agreement of the Development) of the Development. It serves as an ancillary use to the residential property connected thereto. Where applicable, the saleable area of the relevant residential properties specified in the section "Area of Residential Properties in the Development" of the sales brochure of the Development already includes the floor areas of the conservatory of such residential properties.

備註:

1. 溫室為有蓋區域，其上部分在護牆高度以上為開放式，屬於發展項目住宅物業的一部分，並不屬於發展項目的「一般公用地方」或「一般公用設施」（定義見發展項目的《公契及管理協議》）。溫室作為與其相連的住宅物業的附屬用途。如適用，在「發展項目中的住宅物業的面積」部份內所列出的有關住宅物業之實用面積包括該溫室之樓面面積。

KEY PLAN 索引圖



Scale 0 5M(米)
比例

Floor plans of residential properties in the development

發展項目的住宅物業的樓面平面圖

7/F 7樓

Description 描述	Flat 單位							
	E5	E6	E7	G1	G2	S1	S2	S3
				Duplex Unit (Lower Floor) 複式單位 (下層)				Duplex Unit (Lower Floor) 複式單位 (下層)
Floor-to-floor height (refers to the height between the top surface of the structural slab of a floor and the top surface of the structural slab of its immediate upper floor) of each residential property (m) 每個住宅物業的層與層之間的高度 (指該樓層之石屎地台面與上一層石屎地台面之高度距離)(米)		3.025 3.025 [△] 3.025 [☆] 3.025 [◇]		3.100 3.200 3.450 [☆] 3.450 [△] 3.550 [△] 6.150		3.025 3.025 [△] 3.025 [☆] 3.025 [◇]		3.100 3.200 3.300 [◇] 3.450 [☆] 3.450 [△] 3.550 [△] 6.150
Thickness of the floor slabs (excluding plaster) of each residential property (mm) 每個住宅物業的樓板(不包括灰泥)厚度(毫米)				150 175				

The internal areas of the residential properties on the upper floors will generally be slightly larger than those on the lower floors because of the reducing thickness of the structural walls on the upper floors.

(This statement as required under section 10(2)(e) of Part 1 of Schedule 1 to the Residential Properties (First-hand Sales) Ordinance is not applicable to the Development.)

因住宅物業的較高樓層的結構牆的厚度遞減，較高樓層的內部面積，一般比較低樓層的內部面積稍大。
(此根據《一手住宅物業銷售條例》附表1第1部第10(2)(e)條規定之陳述並不適用於本發展項目。)

Remarks:

- The dimensions in the floor plans are all structural dimensions in millimetre and rounded off to the nearest integer.
- Please refer to Page 30 to Page 31 of this sales brochure for legend of the terms and abbreviations shown in the floor plans.
- The floor-to-floor height (i.e. the height between the top surface of the structural slab of that floor and the top surface of the structured slab of its immediate upper floor) includes, without limitation:
 - (◇) Inclusive of the sunken depth of the sunken slab on the floor of that floor (0.100m);
 - (☆) Inclusive of the sunken depth of the sunken slab on the floor of that floor (0.250m);
 - (△) Inclusive of the sunken depth of the sunken slab on the floor of that floor (0.350m);
 those sunken slabs located partly on the structural slab of that floor or its immediate upper floor.
- In the description of residential property in a residential block, the prefix "E" means Elite Residence unit and the numbering means the numbering of Elite Residence unit. E.g. "E1" refers to Elite Residence 1.
- In the description of residential property in a residential block, the prefix "G" means Garden Residence unit and the numbering means the numbering of Garden Residence unit. E.g. "G1" refers to Garden Residence 1.
- In the description of residential property in a residential block, the prefix "S" means Superior Residence unit and the numbering means the numbering of Superior Residence unit. E.g. "S1" refers to Superior Residence 1.

備註:

- 樓面平面圖所列數字為以毫米標示之建築結構尺寸，並以四捨五入至整數。
- 樓面平面圖中顯示之名詞及簡稱之圖例，請參閱本售樓說明書第30頁至第31頁。
- 層與層之間的高度（指該樓層之石屎地台面與上一層石屎地台面之高度距離）包括但不限於：
 - (◇) 當中在該樓層跌級樓板為0.100米的跌級高度；
 - (☆) 當中在該樓層跌級樓板為0.250米的跌級高度；
 - (△) 當中在該樓層跌級樓板為0.350米的跌級高度；
 該等跌級樓板有部分位於該樓層或上一層之石屎地台面。
- 住宅大樓的住宅物業的描述中，字首「E」指Elite Residence單位，而編號指Elite Residence單位的編號。例如「E1」指Elite Residence 1號單位。
- 住宅大樓的住宅物業的描述中，字首「G」指Garden Residence單位，而編號指Garden Residence單位的編號。例如「G1」指Garden Residence 1號單位。
- 住宅大樓的住宅物業的描述中，字首「S」指Superior Residence單位，而編號指Superior Residence單位的編號。例如「S1」指Superior Residence 1號單位。

Floor plans of residential properties in the development

發展項目的住宅物業的樓面平面圖

7/F
7樓



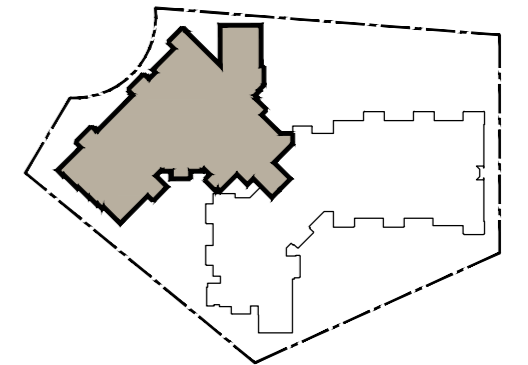
Remark:

- The conservatory is a covered area and is open sided above parapet height, forms part of a residential property of the Development, and does not form part of the General Common Areas or General Common Facilities (as defined in the Deed of Mutual Covenant Incorporating Management Agreement of the Development) of the Development. It serves as an ancillary use to the residential property connected thereto. Where applicable, the saleable area of the relevant residential properties specified in the section "Area of Residential Properties in the Development" of the sales brochure of the Development already includes the floor areas of the conservatory of such residential properties.

備註：

- 溫室為有蓋區域，其上部分在護牆高度以上為開放式，屬於發展項目住宅物業的一部分，並不屬於發展項目的「一般公用地方」或「一般公用設施」（定義見發展項目的《公契及管理協議》）。溫室作為與其相連的住宅物業的附屬用途。如適用，在「發展項目中的住宅物業的面積」部份內所列出的有關住宅物業之實用面積包括該溫室之樓面面積。

KEY PLAN 索引圖



Scale 0 5M(米)
比例

Floor plans of residential properties in the development

發展項目的住宅物業的樓面平面圖

8/F 8樓

Description 描述	Flat 單位											
	D1	D2	D3	D5	D6	D7	E1	E2	E3	G3	G5	G6
	Duplex Unit (Upper Floor) 複式單位 (上層)											
Floor-to-floor height (refers to the height between the top surface of the structural slab of a floor and the top surface of the structural slab of its immediate upper floor) of each residential property (m) 每個住宅物業的層與層之間的高度 (指該樓層之石屎地台面與上一層石屎地台面之高度距離) (米)	2.900 2.950 3.000 [◇] 3.150 [☆]	2.900 2.950 3.000 [◇] 3.150 [☆] 3.250 [△]			2.900 2.950 3.000 [◇] 3.150 [☆]							3.075 3.125 3.175 [◇] 3.325 [☆] 3.425 [△]
Thickness of the floor slabs (excluding plaster) of each residential property (mm) 每個住宅物業的樓板 (不包括灰泥) 厚度 (毫米)							150					200

The internal areas of the residential properties on the upper floors will generally be slightly larger than those on the lower floors because of the reducing thickness of the structural walls on the upper floors.

(This statement as required under section 10(2)(e) of Part 1 of Schedule 1 to the Residential Properties (First-hand Sales) Ordinance is not applicable to the Development.)

因住宅物業的較高樓層的結構牆的厚度遞減，較高樓層的內部面積，一般比較低樓層的內部面積稍大。
(此根據《一手住宅物業銷售條例》附表1第1部第10(2)(e)條規定之陳述並不適用於本發展項目。)

Remarks:

- The dimensions in the floor plans are all structural dimensions in millimetre and rounded off to the nearest integer.
- Please refer to Page 30 to Page 31 of this sales brochure for legend of the terms and abbreviations shown in the floor plans.
- The floor-to-floor height (i.e. the height between the top surface of the structural slab of that floor and the top surface of the structured slab of its immediate upper floor) includes, without limitation:
 - (◇) Inclusive of the sunken depth of the sunken slab on the floor of that floor (0.100m);
 - (☆) Inclusive of the sunken depth of the sunken slab on the floor of that floor (0.250m);
 - (△) Inclusive of the sunken depth of the sunken slab on the floor of that floor (0.350m);
 those sunken slabs located partly on the structural slab of that floor or its immediate upper floor.
- In the description of residential property in a residential block, the prefix "D" means Deluxe Duplex unit and the numbering means the numbering of Deluxe Duplex unit. E.g. "D1" refers to Deluxe Duplex 1.
- In the description of residential property in a residential block, the prefix "E" means Elite Residence unit and the numbering means the numbering of Elite Residence unit. E.g. "E1" refers to Elite Residence 1.
- In the description of residential property in a residential block, the prefix "G" means Garden Residence unit and the numbering means the numbering of Garden Residence unit. E.g. "G1" refers to Garden Residence 1.

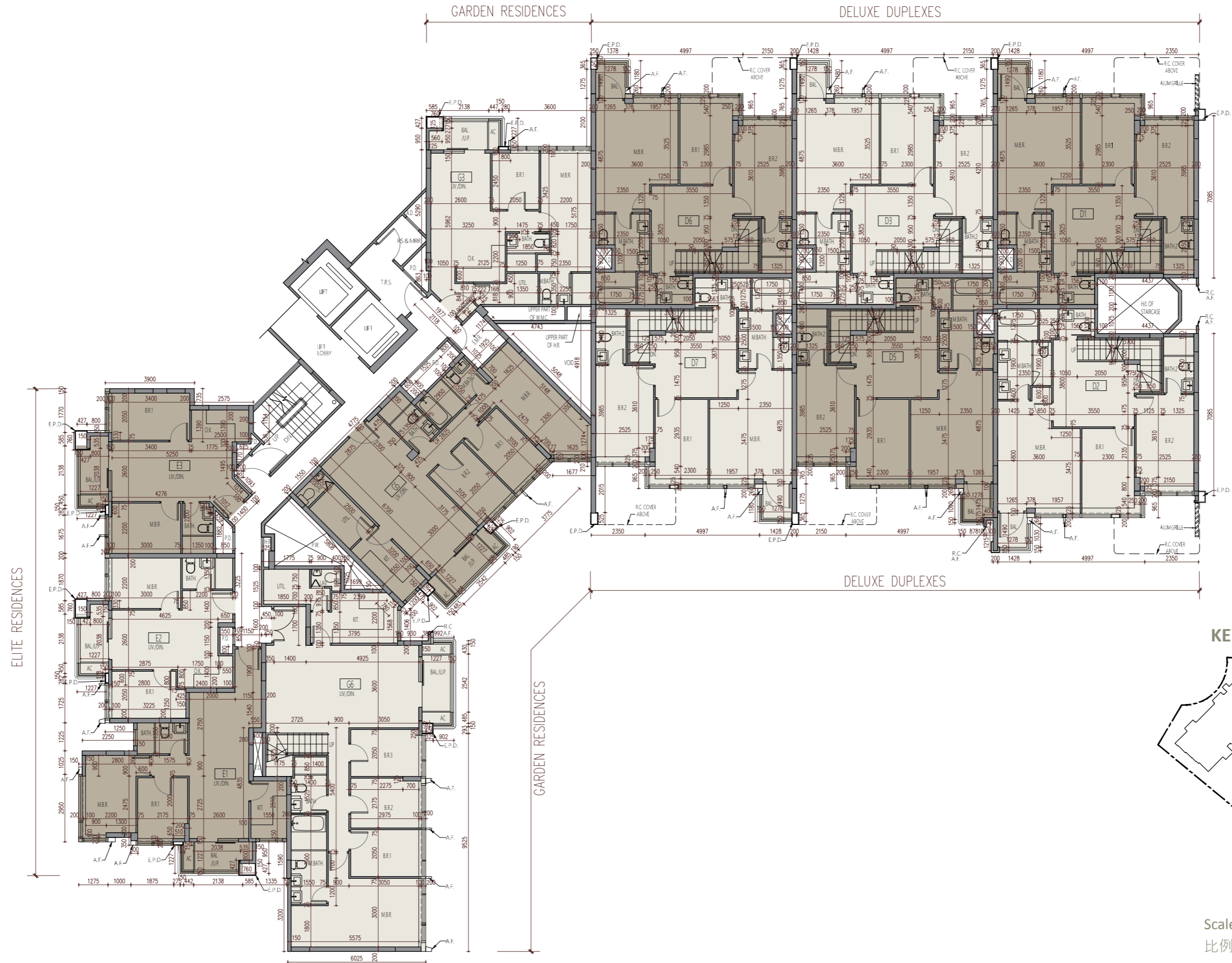
備註:

- 樓面平面圖所列數字為以毫米標示之建築結構尺寸，並以四捨五入至整數。
- 樓面平面圖中顯示之名詞及簡稱之圖例，請參閱本售樓說明書第30頁至第31頁。
- 層與層之間的高度（指該樓層之石屎地台面與上一層石屎地台面之高度距離）包括但不限於：
 - (◇) 當中在該樓層跌級樓板為0.100米的跌級高度；
 - (☆) 當中在該樓層跌級樓板為0.250米的跌級高度；
 - (△) 當中在該樓層跌級樓板為0.350米的跌級高度；
 該等跌級樓板有部分位於該樓層或上一層之石屎地台面。
- 住宅大樓的住宅物業的描述中，字首「D」指Deluxe Duplex單位，而編號指Deluxe Duplex單位的編號。例如「D1」指Deluxe Duplex 1號單位。
- 住宅大樓的住宅物業的描述中，字首「E」指Elite Residence單位，而編號指Elite Residence單位的編號。例如「E1」指Elite Residence 1號單位。
- 住宅大樓的住宅物業的描述中，字首「G」指Garden Residence單位，而編號指Garden Residence單位的編號。例如「G1」指Garden Residence 1號單位。

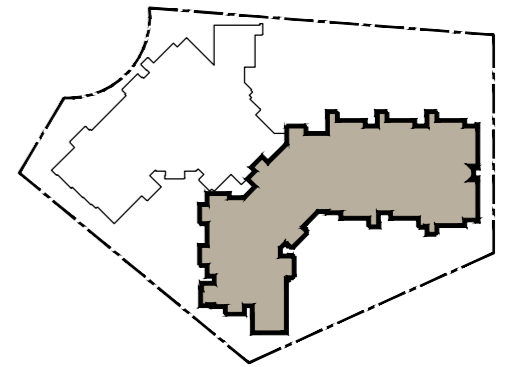
Floor plans of residential properties in the development

發展項目的住宅物業的樓面平面圖

8/F
8樓



KEY PLAN 索引圖



Scale 0 5M(米)
比例

Floor plans of residential properties in the development

發展項目的住宅物業的樓面平面圖

8/F 8樓

Description 描述	Flat 單位							
	E5	E6	E7	G1	G2	S1	S2	S3
				Duplex Unit (Upper Floor) 複式單位 (上層)				Duplex Unit (Upper Floor) 複式單位 (上層)
Floor-to-floor height (refers to the height between the top surface of the structural slab of a floor and the top surface of the structural slab of its immediate upper floor) of each residential property (m) 每個住宅物業的層與層之間的高度 (指該樓層之石屎地台面與上一層石屎地台面之高度距離) (米)		3.075 3.125 3.175 [◇] 3.325 [☆] 3.425 [△]		2.900 2.950 3.000 [◇]		3.075 3.125 3.175 [◇] 3.325 [☆] 3.425 [△]		2.900 2.950 3.000 [◇]
Thickness of the floor slabs (excluding plaster) of each residential property (mm) 每個住宅物業的樓板 (不包括灰泥) 厚度 (毫米)				150 200				

The internal areas of the residential properties on the upper floors will generally be slightly larger than those on the lower floors because of the reducing thickness of the structural walls on the upper floors.

(This statement as required under section 10(2)(e) of Part 1 of Schedule 1 to the Residential Properties (First-hand Sales) Ordinance is not applicable to the Development.)

因住宅物業的較高樓層的結構牆的厚度遞減，較高樓層的內部面積，一般比較低樓層的內部面積稍大。
(此根據《一手住宅物業銷售條例》附表1第1部第10(2)(e)條規定之陳述並不適用於本發展項目。)

Remarks:

- The dimensions in the floor plans are all structural dimensions in millimetre and rounded off to the nearest integer.
- Please refer to Page 30 to Page 31 of this sales brochure for legend of the terms and abbreviations shown in the floor plans.
- The floor-to-floor height (i.e. the height between the top surface of the structural slab of that floor and the top surface of the structured slab of its immediate upper floor) includes, without limitation:
 - (◇) Inclusive of the sunken depth of the sunken slab on the floor of that floor (0.100m);
 - (☆) Inclusive of the sunken depth of the sunken slab on the floor of that floor (0.250m);
 - (△) Inclusive of the sunken depth of the sunken slab on the floor of that floor (0.350m);
 those sunken slabs located partly on the structural slab of that floor or its immediate upper floor.
- In the description of residential property in a residential block, the prefix "E" means Elite Residence unit and the numbering means the numbering of Elite Residence unit. E.g. "E1" refers to Elite Residence 1.
- In the description of residential property in a residential block, the prefix "G" means Garden Residence unit and the numbering means the numbering of Garden Residence unit. E.g. "G1" refers to Garden Residence 1.
- In the description of residential property in a residential block, the prefix "S" means Superior Residence unit and the numbering means the numbering of Superior Residence unit. E.g. "S1" refers to Superior Residence 1.

備註:

- 樓面平面圖所列數字為以毫米標示之建築結構尺寸，並以四捨五入至整數。
- 樓面平面圖中顯示之名詞及簡稱之圖例，請參閱本售樓說明書第30頁至第31頁。
- 層與層之間的高度（指該樓層之石屎地台面與上一層石屎地台面之高度距離）包括但不限於：
 - (◇) 當中在該樓層跌級樓板為0.100米的跌級高度；
 - (☆) 當中在該樓層跌級樓板為0.250米的跌級高度；
 - (△) 當中在該樓層跌級樓板為0.350米的跌級高度；
 該等跌級樓板有部分位於該樓層或上一層之石屎地台面。
- 住宅大樓的住宅物業的描述中，字首「E」指Elite Residence單位，而編號指Elite Residence單位的編號。例如「E1」指Elite Residence 1號單位。
- 住宅大樓的住宅物業的描述中，字首「G」指Garden Residence單位，而編號指Garden Residence單位的編號。例如「G1」指Garden Residence 1號單位。
- 住宅大樓的住宅物業的描述中，字首「S」指Superior Residence單位，而編號指Superior Residence單位的編號。例如「S1」指Superior Residence 1號單位。

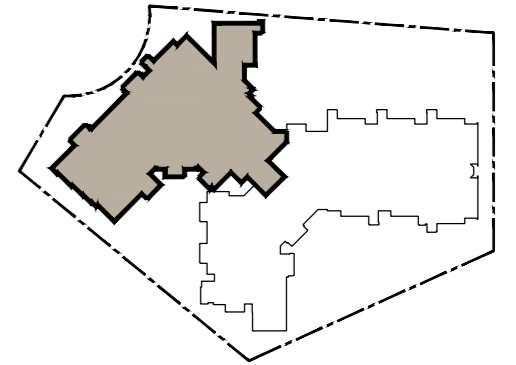
Floor plans of residential properties in the development

發展項目的住宅物業的樓面平面圖

8/F
8樓



KEY PLAN 索引圖



Scale 0 5M(米)
比例

Floor plans of residential properties in the development

發展項目的住宅物業的樓面平面圖

Roof 天台

Description 描述	Flat 單位						G6
	D1	D2	D3	D5	D6	D7	
	Duplex Unit 複式單位						
Floor-to-floor height (refers to the height between the top surface of the structural slab of a floor and the top surface of the structural slab of its immediate upper floor) of each residential property (m) 每個住宅物業的層與層之間的高度 (指該樓層之石屎地台面與上一層石屎地台面之高度距離) (米)	2.550						
Thickness of the floor slabs (excluding plaster) of each residential property (mm) 每個住宅物業的樓板 (不包括灰泥) 厚度 (毫米)	150						

The internal areas of the residential properties on the upper floors will generally be slightly larger than those on the lower floors because of the reducing thickness of the structural walls on the upper floors.

(This statement as required under section 10(2)(e) of Part 1 of Schedule 1 to the Residential Properties (First-hand Sales) Ordinance is not applicable to the Development.)

因住宅物業的較高樓層的結構牆的厚度遞減，較高樓層的內部面積，一般比較低樓層的內部面積稍大。
(此根據《一手住宅物業銷售條例》附表1第1部第10(2)(e)條規定之陳述並不適用於本發展項目。)

Remarks:

- The dimensions in the floor plans are all structural dimensions in millimetre and rounded off to the nearest integer.
- Please refer to Page 30 to Page 31 of this sales brochure for legend of the terms and abbreviations shown in the floor plans.
- In the description of residential property in a residential block, the prefix "D" means Deluxe Duplex unit and the numbering means the numbering of Deluxe Duplex unit. E.g. "D1" refers to Deluxe Duplex 1.
- In the description of residential property in a residential block, the prefix "G" means Garden Residence unit and the numbering means the numbering of Garden Residence unit. E.g. "G1" refers to Garden Residence 1.

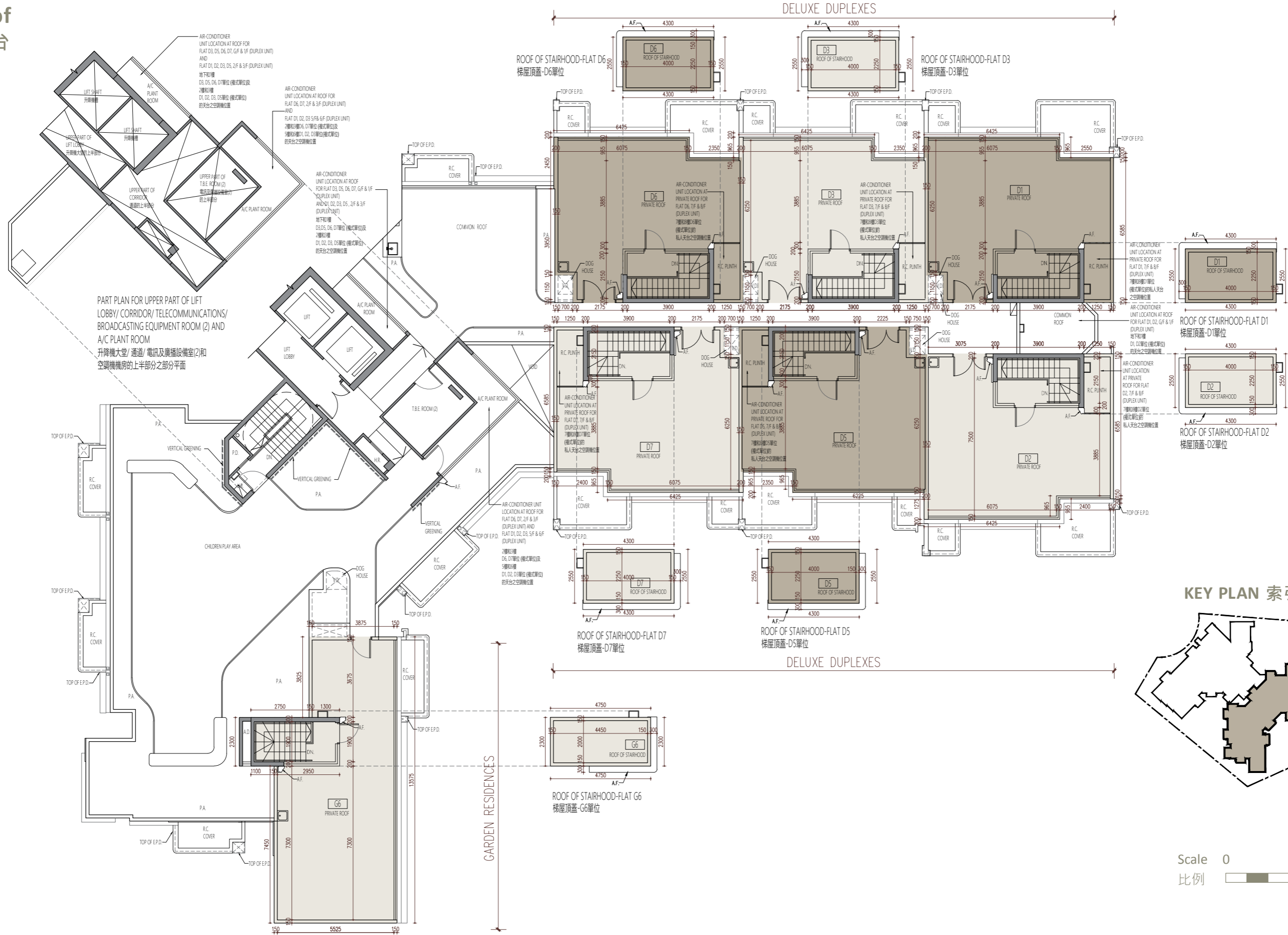
備註：

- 樓面平面圖所列數字為以毫米標示之建築結構尺寸，並以四捨五入至整數。
- 樓面平面圖中顯示之名詞及簡稱之圖例，請參閱本售樓說明書第30頁至第31頁。
- 住宅大樓的住宅物業的描述中，字首「D」指Deluxe Duplex單位，而編號指Deluxe Duplex單位的編號。例如「D1」指Deluxe Duplex 1號單位。
- 住宅大樓的住宅物業的描述中，字首「G」指Garden Residence單位，而編號指Garden Residence單位的編號。例如「G1」指Garden Residence 1號單位。

Floor plans of residential properties in the development

發展項目的住宅物業的樓面平面圖

Roof 天台



PART PLAN FOR UPPER PART OF LIFT LOBBY/ CORRIDOR/ TELECOMMUNICATIONS/ BROADCASTING EQUIPMENT ROOM (2) AND A/C PLANT ROOM
升降機大堂/ 通道/ 電訊及廣播設備室(2)和空調機機房的上半部分之部分平面

AIR-CONDITIONER UNIT LOCATION AT ROOF FOR FLAT D3, D5, D6, D7, G6 & 1/F (DUPLIX UNIT) AND FLAT D1, D2, D3, D5, 2/F & 3/F (DUPLIX UNIT)
地下和樓上之梯屋頂蓋(複式單位)及2樓和3樓之梯屋頂蓋(複式單位)之天台之空調機位置

AIR-CONDITIONER UNIT LOCATION AT ROOF FOR FLAT D6, D7, 2/F & 3/F (DUPLIX UNIT) AND FLAT D1, D2, D3, 5/F & 6/F (DUPLIX UNIT)
地下和樓上之梯屋頂蓋(複式單位)及2樓和3樓之梯屋頂蓋(複式單位)之天台之空調機位置

AIR-CONDITIONER UNIT LOCATION AT ROOF FOR FLAT D3, D5, D6, D7, G6 & 1/F (DUPLIX UNIT) AND FLAT D1, D2, D3, D5, 2/F & 3/F (DUPLIX UNIT)
地下和樓上之梯屋頂蓋(複式單位)及2樓和3樓之梯屋頂蓋(複式單位)之天台之空調機位置

AIR-CONDITIONER UNIT LOCATION AT ROOF FOR FLAT D1, D2, G6 & 1/F (DUPLIX UNIT)
地下和樓上之梯屋頂蓋(複式單位)及2樓和3樓之梯屋頂蓋(複式單位)之天台之空調機位置

GARDEN RESIDENCES



Floor plans of residential properties in the development

發展項目的住宅物業的樓面平面圖

Roof 天台

Description 描述	Flat 單位			
	G1	S1	S2	S3
	Duplex Unit 複式單位			Duplex Unit 複式單位
Floor-to-floor height (refers to the height between the top surface of the structural slab of a floor and the top surface of the structural slab of its immediate upper floor) of each residential property (m) 每個住宅物業的層與層之間的高度 (指該樓層之石屎地台面與上一層石屎地台面之高度距離) (米)	2.550			
Thickness of the floor slabs (excluding plaster) of each residential property (mm) 每個住宅物業的樓板 (不包括灰泥) 厚度 (毫米)	150			

The internal areas of the residential properties on the upper floors will generally be slightly larger than those on the lower floors because of the reducing thickness of the structural walls on the upper floors.

(This statement as required under section 10(2)(e) of Part 1 of Schedule 1 to the Residential Properties (First-hand Sales) Ordinance is not applicable to the Development.)

因住宅物業的較高樓層的結構牆的厚度遞減，較高樓層的內部面積，一般比較低樓層的內部面積稍大。
(此根據《一手住宅物業銷售條例》附表1第1部第10(2)(e)條規定之陳述並不適用於本發展項目。)

Remarks:

1. The dimensions in the floor plans are all structural dimensions in millimetre and rounded off to the nearest integer.
2. Please refer to Page 30 to Page 31 of this sales brochure for legend of the terms and abbreviations shown in the floor plans.
3. In the description of residential property in a residential block, the prefix "G" means Garden Residence unit and the numbering means the numbering of Garden Residence unit. E.g. "G1" refers to Garden Residence 1.
4. In the description of residential property in a residential block, the prefix "S" means Superior Residence unit and the numbering means the numbering of Superior Residence unit. E.g. "S1" refers to Superior Residence 1.

備註：

1. 樓面平面圖所列數字為以毫米標示之建築結構尺寸，並以四捨五入至整數。
2. 樓面平面圖中顯示之名詞及簡稱之圖例，請參閱本售樓說明書第30頁至第31頁。
3. 住宅大樓的住宅物業的描述中，字首「G」指Garden Residence單位，而編號指Garden Residence單位的編號。例如「G1」指Garden Residence 1號單位。
4. 住宅大樓的住宅物業的描述中，字首「S」指Superior Residence單位，而編號指Superior Residence單位的編號。例如「S1」指Superior Residence 1號單位。

Floor plans of residential properties in the development

發展項目的住宅物業的樓面平面圖

Rosa Villa together with Residential Parking Space No. RV1 & RV2 (Duplex Unit) Rosa Villa連同RV1號及RV2號住宅停車位(複式單位)

Description 描述	Floor 樓層	Rosa Villa
Floor-to-floor height (refers to the height between the top surface of the structural slab of a floor and the top surface of the structural slab of its immediate upper floor) of residential property (m) 住宅物業的層與層之間的高度 (指該樓層之石屎地台面與上一層石屎地台面之高度距離)(米)	B/F 地庫	4.100
	G/F 地下	2.850
		2.950
		3.100
		3.200
1/F 1樓	2.850 [△]	
	2.850 [☆]	
	2.850	
	2.950 [◇]	
Thickness of the floor slabs (excluding plaster) of residential property (mm) 住宅物業的樓板(不包括灰泥)厚度(毫米)	B/F 地庫	250
	G/F 地下	150
	1/F 1樓	175

The internal areas of the residential properties on the upper floors will generally be slightly larger than those on the lower floors because of the reducing thickness of the structural walls on the upper floors.

(This statement as required under section 10(2)(e) of Part 1 of Schedule 1 to the Residential Properties (First-hand Sales) Ordinance is not applicable to the Development.)

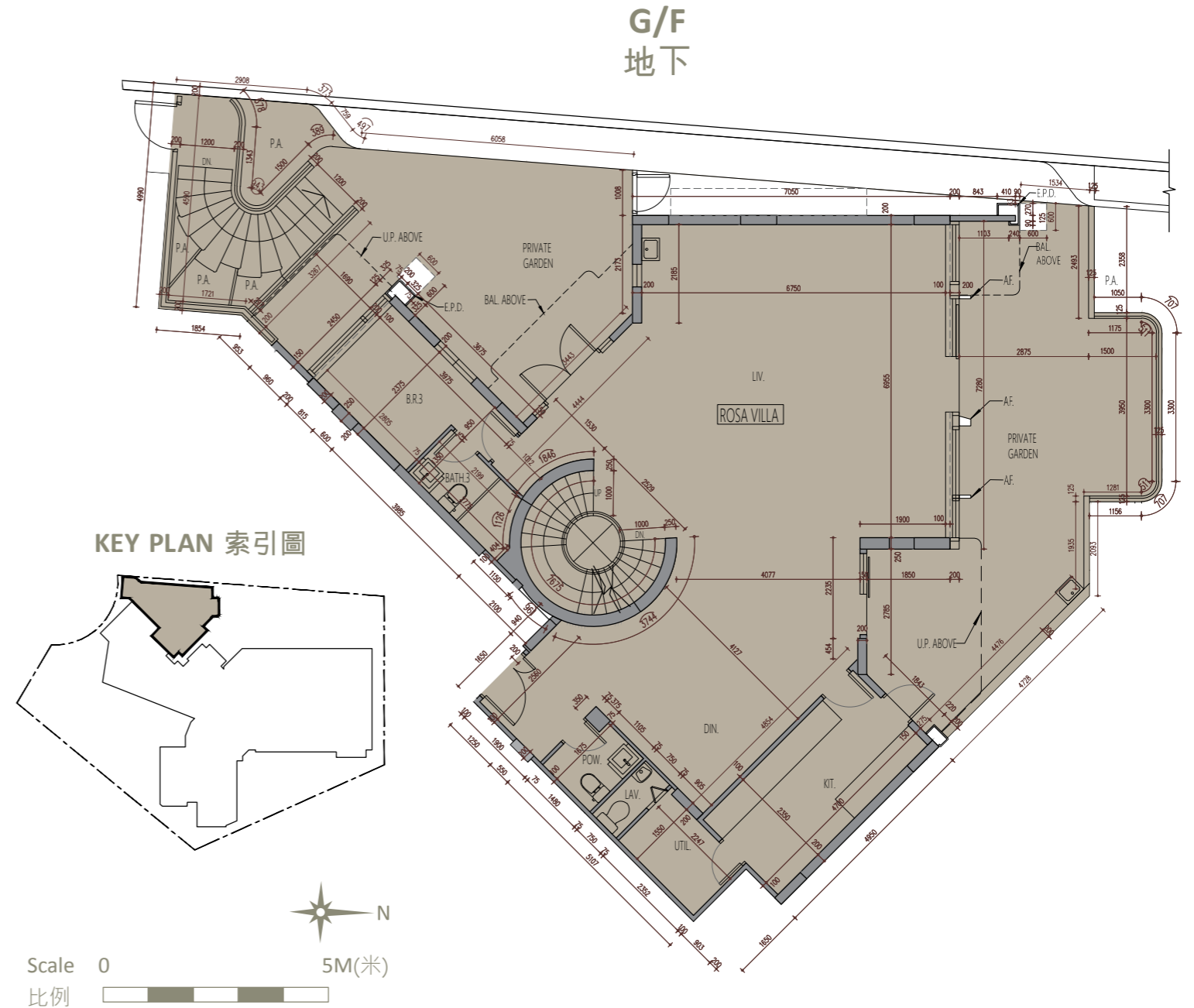
因住宅物業的較高樓層的結構牆的厚度遞減，較高樓層的內部面積，一般比較低樓層的內部面積稍大。
(此根據《一手住宅物業銷售條例》附表1第1部第10(2)(e)條規定之陳述並不適用於本發展項目。)

Remarks:

- The dimensions in the floor plans are all structural dimensions in millimetre and rounded off to the nearest integer.
- The floor-to-floor height (i.e. the height between the top surface of the structural slab of that floor and the top surface of the structured slab of its immediate upper floor) includes, without limitation:
 - (◇) Inclusive of the sunken depth of the sunken slab on the floor of that floor (0.100m);
 - (☆) Inclusive of the sunken depth of the sunken slab on the floor of that floor (0.250m);
 - (△) Inclusive of the sunken depth of the sunken slab on the floor of that floor (0.350m);
 those sunken slabs located partly on the structural slab of that floor or its immediate upper floor.

備註：

- 樓面平面圖所列數字為以毫米標示之建築結構尺寸，並以四捨五入至整數。
- 層與層之間的高度（指該樓層之石屎地台面與上一層石屎地台面之高度距離）包括但不限於：
 - (◇) 當中在該樓層跌級樓板為0.100米的跌級高度；
 - (☆) 當中在該樓層跌級樓板為0.250米的跌級高度；
 - (△) 當中在該樓層跌級樓板為0.350米的跌級高度；
 該等跌級樓板有部分位於該樓層或上一層之石屎地台面。

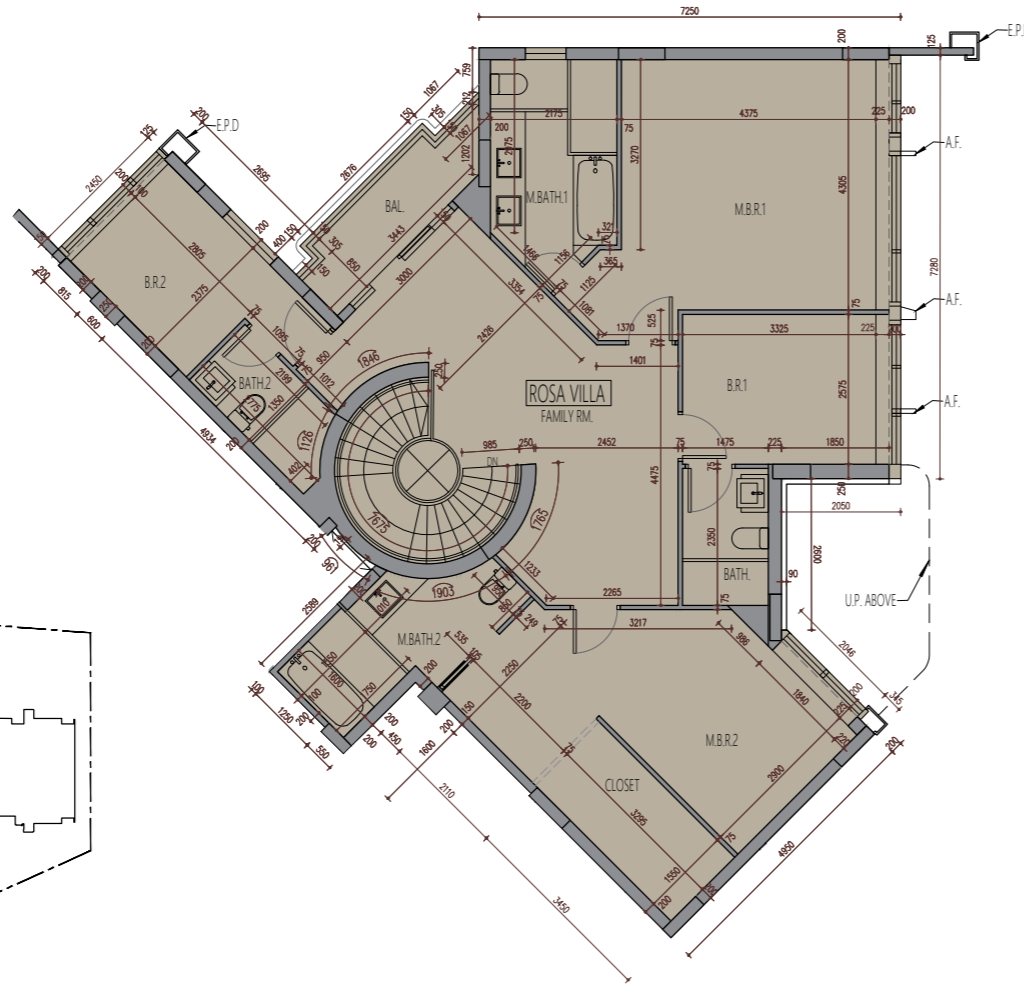


Floor plans of residential properties in the development

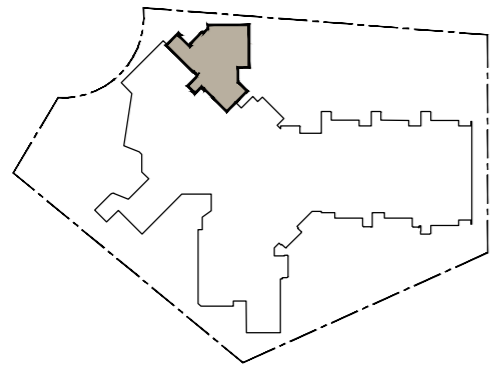
發展項目的住宅物業的樓面平面圖

Rosa Villa together with Residential Parking Space No. RV1 & RV2 (Duplex Unit) Rosa Villa連同RV1號及RV2號住宅停車位(複式單位)

1/F
1樓

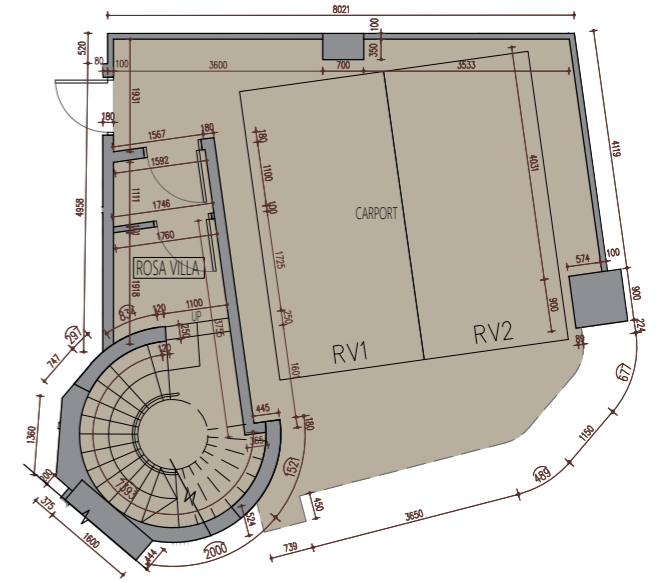


KEY PLAN 索引圖

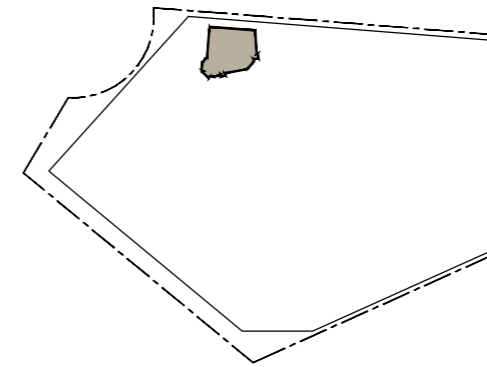


Scale 0 5M(米)
比例

B/F
地庫



KEY PLAN 索引圖



Scale 0 5M(米)
比例

Legend 圖例

A.F. = Architectural Feature 建築裝飾
BAL. = Balcony 露台
BAL. ABOVE = Balcony Above 露台在上方
BATH. = Bathroom 浴室
BATH.2 = Bathroom 2 浴室2
BATH.3 = Bathroom 3 浴室3
B.R.1 = Bedroom 1 睡房1
B.R.2 = Bedroom 2 睡房2

B.R.3 = Bedroom 3 睡房3
CARPORT = Carport 車房
CLOSET = Closet 衣帽間
DIN. = Dining Room 飯廳
DN. = Down 下
E.P.D. = External Pipe Duct (Architectural Feature)
外置管道槽(建築裝飾)
FAMILY RM. = Family Room 起居室

KIT. = Kitchen 廚房
LAV. = Lavatory 洗手間
LIV. = Living Room 客廳
M.BATH.1 = Master Bathroom 1 主人房浴室1
M.BATH.2 = Master Bathroom 2 主人房浴室2
M.B.R.1 = Master Bedroom 1 主人睡房1
M.B.R.2 = Master Bedroom 2 主人睡房2
P.A. = Planter 花槽

POW. = Powder Room 客廳洗手間
PRIVATE GARDEN = Private Garden 私人花園
UP = Up 上
U.P. ABOVE = Utility Platform above 工作平台在上方
UTIL. = Utility Room 工作間