



樓面平面圖中所使用名詞及簡稱之圖例

Legend of terms and abbreviations used on Floor Plan

ACCESS DOOR	= Access Door	= 檢修門
ACC. LIFT	= Accessible Lift	= 暢通易達升降機
ACOUSTIC WIN.	= Acoustic Window	= 隔音窗
ACOUSTIC SLIDING DOOR	= Acoustic Sliding Door	= 隔音滑動門
A/C GRILLE	= Air Conditioner Grille	= 冷氣機格柵
A/C P.	= Air Conditioner Platform	= 冷氣機平台
A/C UNIT CABINET	= Air Conditioner Unit Cabinet	= 冷氣機櫃
A.F.	= Architectural Feature	= 建築裝飾
A.F. ABOVE	= Architectural Feature Above	= 建築裝飾置上
A.F. FOR P.D.	= Architectural Feature for Pipe Duct	= 建築裝飾遮蓋管道槽
BAL.	= Balcony	= 露台
BAL. & UP. ABOVE	= Balcony and Utility Platform Above	= 露台及工作平台置上
BATH	= Bathroom	= 浴室
B.R.	= Bedroom	= 睡房
C.L. ABOVE	= Cat Ladder Above	= 爬梯置上
COMMON AREA FOR E&M MAINTENANCE	= Common Area for Electrical and Mechanical Maintenance	= 公用地方供機電系統維修
DOG HOUSE	= Dog House	= 室外管道房
DN	= Down	= 落
EAD	= Exhaust Air Duct	= 排氣管
EL. RISER D.	= Electrical Riser Duct	= 電線管道
ELV. DUCT	= Extra Low Voltage Electrical Duct	= 特低壓電線槽
ELV. RM.	= Extra Low Voltage Electrical Room	= 特低壓電線房
EL. RM.	= Electrical Room	= 電掣房
E.D.	= Electric Duct	= 電線槽
E.M.D.	= Electrical Meter Duct	= 電錶槽
E.M.R.	= Electrical Meter Room	= 電錶房
FAN RM. (For RSMRR)	= Fan Room for Refuse Storage and Material Recovery Room	= 風機房予垃圾及物料回收室
FIREMAN'S LIFT LOBBY	= Fireman's Lift Lobby	= 消防員升降機大堂
FLAT ROOF (COMMON AREA)	= Flat Roof (Common Area)	= 平台(公用地方)
FLUSHING AND POTABLE WATER TANK AND PUMP ROOM	= Flushing and Potable Water Tank and Pump Room	= 沖廁及食水缸及泵房
FLUSHING WATER PUMP ROOM	= Flushing Water Pump Room	= 沖廁水泵房
FLUSHING WATER TANK	= Flushing Water Tank	= 沖廁水缸



樓面平面圖中所使用名詞及簡稱之圖例

Legend of terms and abbreviations used on Floor Plan

FS WATER TANK & PUMP RM.	= Fire Services Water Tank and Pump Room	= 消防水缸及水泵房
GARDEN (COMMON AREA)	= Garden (Common Area)	= 花園(公用地方)
FOYER	= Foyer	= 門廳
HR	= Hose Reel	= 消防喉轆
KIT.	= Kitchen	= 廚房
LAV.	= Lavatory	= 洗手間
LIFT	= Lift	= 升降機
LIFT LOBBY	= Lift Lobby	= 升降機大堂
LIFT MACHINE ROOM	= Lift Machine Room	= 升降機機房
LIFT OVERRUN	= Lift Overrun	= 升降機槽
LIV. / DIN.	= Living Room / Dining Room	= 客廳 / 飯廳
LIGHT WELL (COMMON AREA)	= Light Well (Common Area)	= 天井(公用地方)
M. BATH	= Master Bathroom	= 主人浴室
MAINTENANCE WIN.	= Maintenance Window	= 維修窗
M.B.R.	= Master Bedroom	= 主人睡房
M.L. AT H/L	= Metal Louvre at High Level	= 金屬百葉置高位
M.L. AT H/L. FOR STAIRCASE TOP VENT	= Metal Louvre at High Level for Staircase Top Vent	= 金屬百葉置高位供樓梯通風
ON __ /F	= On __ /F	= 設於 __ 樓
OPEN KIT.	= Open Kitchen	= 開放式廚房
P.D.	= Pipe Duct	= 管道槽
P.D. ROOM	= Pipe Duct Room	= 管道槽房
PIPE WELL	= Pipe Well	= 管井
POWDER	= Powder Room	= 化妝間
PRIVATE FLAT ROOF	= Private Flat Roof	= 私人平台
PRIVATE FLAT ROOF BELOW	= Private Flat Roof Below	= 私人平台置下
PRIVATE GARDEN	= Private Garden	= 私人花園
PRIVATE LIFT LOBBY	= Private Lift Lobby	= 私人升降機大堂
PRIVATE ROOF	= Private Roof	= 私人天台
PRIVATE ROOF OF STAIRHOOD	= Private Roof of Stairhood	= 梯屋之私人天台
R.C. SPRINKLER TANK	= Reinforced Concrete Sprinkler Tank	= 鋼筋混凝土花灑水缸
R.S.M.R.R.	= Refuse Storage and Material Recovery Room	= 垃圾及物料回收室
SINK	= Sink	= 洗滌盆



樓面平面圖中所使用名詞及簡稱之圖例

Legend of terms and abbreviations used on Floor Plan

STORE	= Store	= 士多房
STOVE	= Stove	= 爐
TOP OF (A.F.)	= Top of (Architectural Feature)	= 頂部(建築裝飾)
TOP OF BAL. (A.F.)	= Top of Balcony (Architectural Feature)	= 露台頂部(建築裝飾)
TOP OF CLADDING (COMMON AREA)	= Top of Cladding (Common Area)	= 飾面頂部(公用地方)
TOP OF P.D. (A.F.)	= Top of Pipe Duct (Architectural Feature)	= 管道槽頂部(建築裝飾)
TOP SPANDREL	= Top Spandrel	= 頂部吊牆
FOR TOWER_/T_	= Tower __	= 第__座
T.L.D.	= Telephone Duct	= 電話線槽
T.R.S.	= Temporary Refuge Space	= 臨時庇護處
UP	= Up	= 上
UP.	= Utility Platform	= 工作平台
UTIL.	= Utility Room	= 工作間
VENT FOR PIPE WELL	= Vent for Pipe Well	= 管道井通風口
WALK-IN CLOSET	= Walk-in Closet	= 衣帽間
W.M.C.	= Water Meter Cabinet	= 水錶櫃
W/P. M.L.	= Weather-Proof Metal Louvre	= 防風雨金屬百葉
W/P. M.L. AT H/L.	= Weather-Proof Metal Louvre at High Level	= 防風雨金屬百葉設在高位
W/P. M.L. AT L/L.	= Weather-Proof Metal Louvre at Low Level	= 防風雨金屬百葉設在低位

適用於本節各樓面平面圖之備註：

1. 部分樓層外牆設有建築裝飾及/或外露喉管/管道。詳細資料請參考最新經批准的建築圖則及其他相關圖則。
2. 部分住宅物業的露台及/或平台及/或工作平台及/或花園及/或冷氣機平台及/或外牆上/附近設有外露及/或內藏於外牆覆蓋板的公用喉管及/或機電設備。詳細資料請參考最新經批准的建築圖則及/或排水設施圖則。
3. 部分住宅物業的客廳/飯廳、睡房、士多房、工作間、廚房、浴室、洗手間、門廳及/或走廊之天花可能設有假天花及/或跌級樓板用以裝置冷氣系統及/或其他機電設備。
4. 樓面平面圖上所顯示的裝置及設備符號，例如浴缸、淋浴間、洗滌盆、坐廁、花灑、洗滌盆櫃等乃摘錄自最新經批准的建築圖則的建築符號，只作一般性標誌，而非展示其實際大小、設計及形狀。
5. 露台、工作平台及冷氣機平台為不可封閉的地方。
6. 住宅物業有非結構預製外牆及/或幕牆。住宅物業之實用面積之計算包括非結構預製外牆及幕牆之面積，並由非結構預製外牆及幕牆之外圍起計。
7. 在期數管理人員安排大廈外牆之必要維修進行期間，吊船將在期數的住宅物業之窗戶外及平台/天台/花園上方之空間運作。

Notes applicable to the floor plans in this section:

1. There are architectural features and/or exposed pipes/ ducts on the external walls of some of the floors. For details, please refer to the latest approved building plans and other relevant plans.
2. Common pipes and/or mechanical and electrical services exposed and/or enclosed in cladding are located at/adjacent to the balcony and/or flat roof and/or utility platform and/or garden and/or air conditioner platform and/or external wall of some residential properties. For details, please refer to the latest approved building plans and/or approved drainage plans.
3. There are ceiling bulkheads and/or sunken slabs on the ceiling at living room/dining room, bedrooms, store, utility room, kitchen, bathroom, lavatory, foyer and/or corridors of some residential properties for the installation of the air-conditioning system and/or other mechanical and electrical services.
4. Symbols of fittings and fitments shown on the floor plans, such as bathtubs, shower cubicle, sink, water closets, shower, sink counter etc. are architectural symbols retrieved from the latest approved building plans and are for general indication only and are not indications of their actual size, designs and shapes.
5. Balconies, utility platforms and air conditioner platforms are non-enclosed areas.
6. There are non-structural prefabricated external walls and/or curtain walls in the residential properties. The saleable area of a residential property has included the area of non-structural prefabricated external walls and curtain walls and is measured from the exterior of such non-structural prefabricated external walls and curtain walls.
7. During the necessary maintenance of the external walls of tower arranged by manager of the Phase, gondola will be operating in the airspace outside the window and above flat roof / roof / garden of residential properties of the Phase.



第1座 (1A、1B及1C) 5樓
Tower 1 (1A, 1B and 1C) 5/F

- 圖例
LEGEND
- 洗滌盆
SINK
 - 冷氣機
AIR CONDITIONER UNIT

比例：0米(M) 5米(M)
Scale: 0m 5m





第1座(1A、1B及1C) 5樓
Tower 1 (1A, 1B and 1C) 5/F

描述 Description		每個住宅物業的層與層之間的高度(指該樓層之石屎地台面與上一層石屎地台面之高度距離)(毫米) The floor-to-floor height (refers to the height between the top surface of the structural slab of a floor and the top surface of the structural slab of its immediate upper floor) of each residential property (mm)					每個住宅物業的樓板(不包括灰泥)的厚度(毫米) The thickness of the floor slabs (excluding plaster) of each residential property (mm)						
座 Tower	樓層 Floor	單位 Unit		A	B	A	B						
第1座(1A) Tower 1 (1A)	5樓 5/F			3250, 3300, 3350, 3400, 3450, 3650	3350, 3400, 3450, 3575, 3650	150, 500		150, 175, 500					
座 Tower	樓層 Floor	單位 Unit		A	B	C	D	E	A	B	C	D	E
第1座(1B) Tower 1 (1B)	5樓 5/F			3250, 3300, 3350, 3400, 3450, 3575, 3650	3350, 3400, 3450, 3575, 3650	3350, 3400, 3450, 3650	3350, 3400, 3450, 3650	3350, 3400, 3450, 3650	150, 500	150, 175, 500	150, 500	150, 500	150, 500
座 Tower	樓層 Floor	單位 Unit		A	B	C	D						
第1座(1C) Tower 1 (1C)	5樓 5/F			3300, 3350, 3450, 3650	3350, 3400, 3450, 3650	3350, 3400, 3450, 3650	3350, 3400, 3450, 3650	150, 175, 500					
									150		150		150

因住宅物業的較高樓層的結構牆的厚度遞減，較高樓層的內部面積，一般比較低樓層的內部面積稍大。

備註：

- 住宅物業之天花高度將會因應其結構、建築及/或裝修設計上的差異而有所不同。
- 樓面平面圖之尺規所列數字為以毫米標示之建築結構尺寸。
- 請參閱本售樓說明書第19至21頁之圖例以協助閱讀樓面平面圖之名稱和簡稱。
- 有關噪音緩解措施之詳情，請參閱本售樓說明書的有關資料章節。

The internal areas of the residential properties on the upper floors will generally be slightly larger than those on the lower floors because of the reducing thickness of the structural walls on the upper floors.

Notes:

- The internal ceiling height within residential properties may vary due to structural, architectural and/or decoration design variations.
- The dimensions in the floor plans are all structural dimensions in millimetre.
- Please refer to pages 19 to 21 of this sales brochure for legend of the terms and abbreviations in studying the floor plans.
- For details of the noise mitigation measures, please refer to the Relevant Information section in this sales brochure.



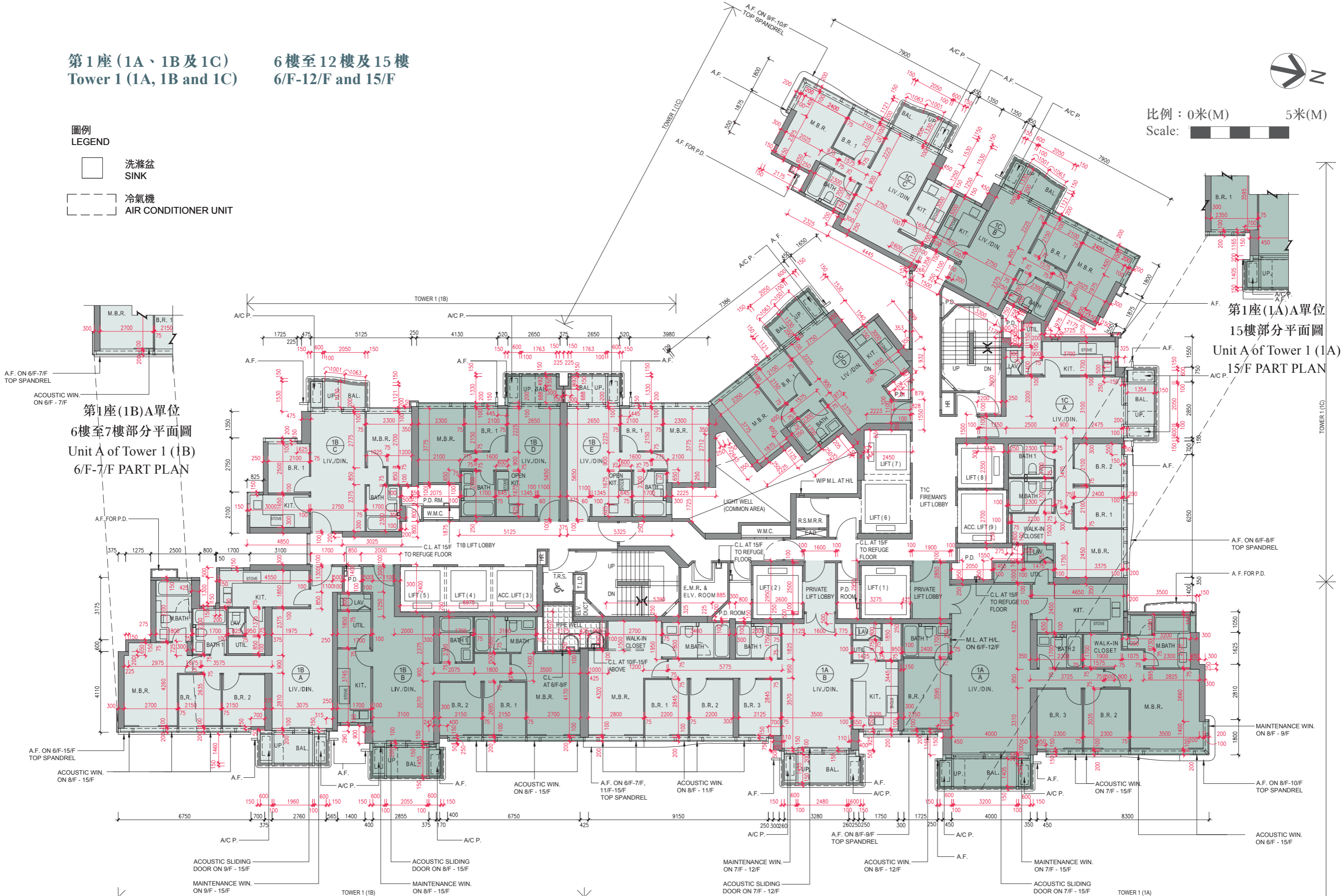
第1座 (1A、1B及1C)
Tower 1 (1A, 1B and 1C)

6樓至12樓及15樓
6/F-12/F and 15/F

圖例
LEGEND

- 洗滌盆
SINK
- 冷氣機
AIR CONDITIONER UNIT

比例：0米(M) 5米(M)
Scale: 5米(M)



第1座(1A)單位
15樓部分平面圖
Unit A of Tower 1 (1A)
15/F PART PLAN

第1座(1B)A單位
6樓至7樓部分平面圖
Unit A of Tower 1 (1B)
6/F-7/F PART PLAN



第1座(1A、1B及1C) 6樓至12樓及15樓
Tower 1 (1A, 1B and 1C) 6/F-12/F and 15/F

描述 Description		每個住宅物業的層與層之間的高度(指該樓層之石屎地台面與上一層石屎地台面之高度距離)(毫米) The floor-to-floor height (refers to the height between the top surface of the structural slab of a floor and the top surface of the structural slab of its immediate upper floor) of each residential property (mm)					每個住宅物業的樓板(不包括灰泥)的厚度(毫米) The thickness of the floor slabs (excluding plaster) of each residential property (mm)							
座 Tower	樓層 Floor	單位 Unit		A	B	A	B							
第1座(1A) Tower 1 (1A)	6樓至12樓 6/F-12/F			3150		150, 500		150, 175, 500						
	15樓 15/F			3150, 3400, 3450, 3500, 3550		3150, 3225, 3400, 3450		150, 500		150, 175, 500				
座 Tower	樓層 Floor	單位 Unit		A	B	C	D	E	A	B	C	D	E	
第1座(1B) Tower 1 (1B)	6樓至12樓 6/F-12/F			3150					150, 500	150, 175, 500		150, 500	150, 500	150, 500
	15樓 15/F			3150, 3225, 3400, 3450, 3500, 3550	3150, 3225, 3400, 3450	3150, 3400, 3450			150, 500	150, 175, 500		150, 500	150, 500	150, 500
座 Tower	樓層 Floor	單位 Unit		A	B	C	D	A	B	C	D			
第1座(1C) Tower 1 (1C)	6樓至12樓 6/F-12/F			3150				150, 175, 500		150, 500		150	150	
	15樓 15/F			3150, 3450, 3500		3150, 3400, 3450			150, 175, 500		150, 500		150	150

因住宅物業的較高樓層的結構牆的厚度遞減，較高樓層的內部面積，一般比較低樓層的內部面積稍大。

備註：

- 住宅物業之天花高度將會因應其結構、建築及/或裝修設計上的差異而有所不同。
- 樓面平面圖之尺規所列數字為以毫米標示之建築結構尺寸。
- 請參閱本售樓說明書第19至21頁之圖例以協助閱讀樓面平面圖之名稱和簡稱。
- 有關噪音緩解措施之詳情，請參閱本售樓說明書的有關資料章節。

The internal areas of the residential properties on the upper floors will generally be slightly larger than those on the lower floors because of the reducing thickness of the structural walls on the upper floors.

Notes:

- The internal ceiling height within residential properties may vary due to structural, architectural and/or decoration design variations.
- The dimensions in the floor plans are all structural dimensions in millimetre.
- Please refer to pages 19 to 21 of this sales brochure for legend of the terms and abbreviations in studying the floor plans.
- For details of the noise mitigation measures, please refer to the Relevant Information section in this sales brochure.



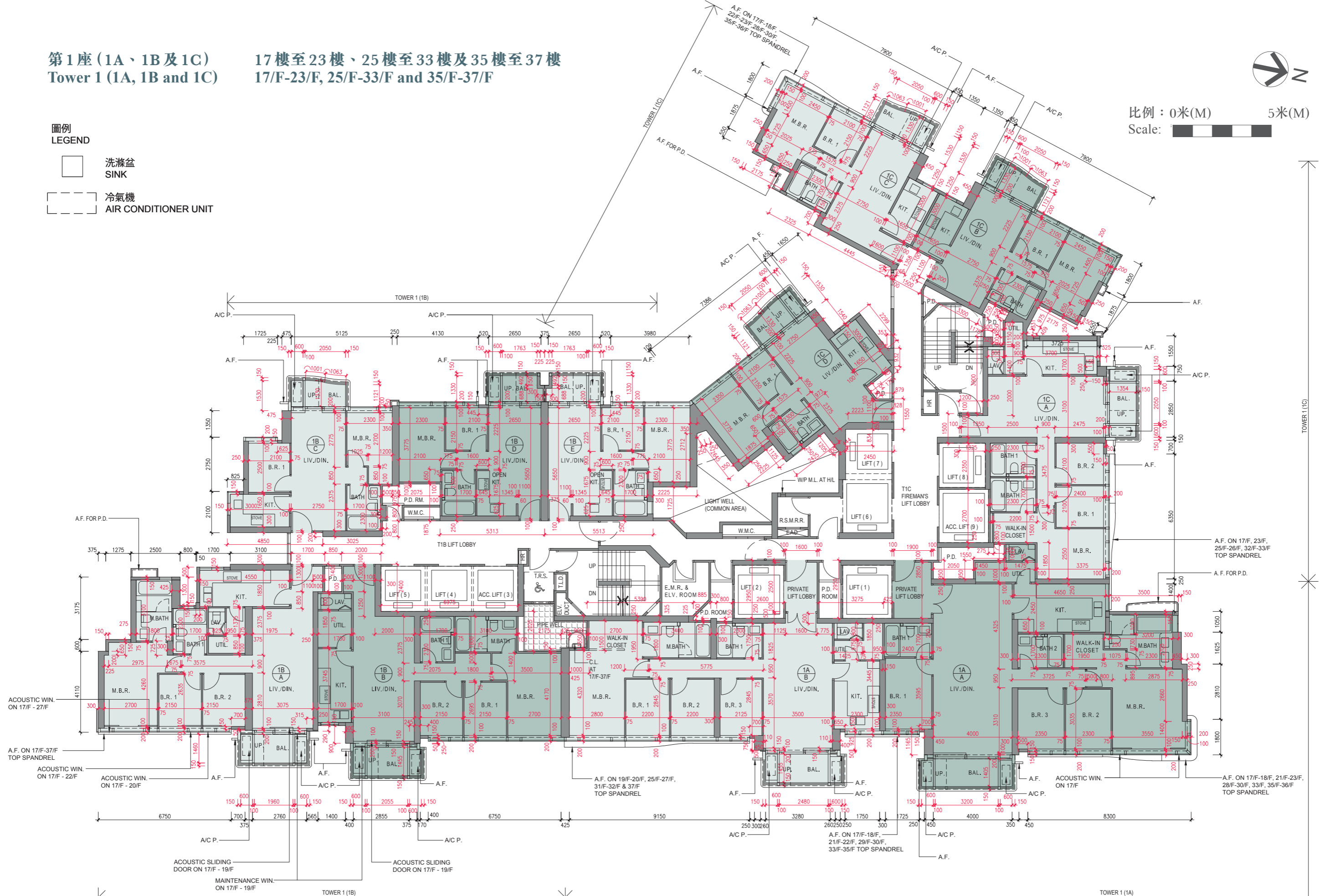
第1座 (1A、1B及1C)
Tower 1 (1A, 1B and 1C)

17樓至23樓、25樓至33樓及35樓至37樓
17/F-23/F, 25/F-33/F and 35/F-37/F

圖例
LEGEND

- 洗滌盆
SINK
- 冷氣機
AIR CONDITIONER UNIT

比例：0米(M) 5米(M)
Scale: 5米(M)





第1座(1A、1B及1C) 17樓至23樓、25樓至33樓及35樓至37樓
Tower 1 (1A, 1B and 1C) 17/F-23/F, 25/F-33/F and 35/F-37/F

描述 Description		每個住宅物業的層與層之間的高度(指該樓層之石屎地台面與上一層石屎地台面之高度距離)(毫米) The floor-to-floor height (refers to the height between the top surface of the structural slab of a floor and the top surface of the structural slab of its immediate upper floor) of each residential property (mm)					每個住宅物業的樓板(不包括灰泥)的厚度(毫米) The thickness of the floor slabs (excluding plaster) of each residential property (mm)					
座 Tower	樓層 Floor / 單位 Unit	A		B			A		B			
第1座(1A) Tower 1 (1A)	17樓至23樓、25樓至33樓及 35樓至37樓 17/F-23/F, 25/F-33/F and 35/F-37/F	3150					150, 500		150, 175, 500			
座 Tower	樓層 Floor / 單位 Unit	A	B	C	D	E	A	B	C	D	E	
第1座(1B) Tower 1 (1B)	17樓至23樓、25樓至33樓及 35樓至37樓 17/F-23/F, 25/F-33/F and 35/F-37/F	3150					150, 500	150, 175, 500	150, 500	150, 500	150, 500	
座 Tower	樓層 Floor / 單位 Unit	A	B	C	D		A	B	C	D		
第1座(1C) Tower 1 (1C)	17樓至23樓、25樓至33樓及 35樓至37樓 17/F-23/F, 25/F-33/F and 35/F-37/F	3150						150, 175, 500	150, 500	150, 500	150	

因住宅物業的較高樓層的結構牆的厚度遞減，較高樓層的內部面積，一般比較低樓層的內部面積稍大。

備註：

- 住宅物業之天花高度將會因應其結構、建築及/或裝修設計上的差異而有所不同。
- 樓面平面圖之尺規所列數字為以毫米標示之建築結構尺寸。
- 請參閱本售樓說明書第19至21頁之圖例以協助閱讀樓面平面圖之名稱和簡稱。
- 有關噪音緩解措施之詳情，請參閱本售樓說明書的有關資料章節。

The internal areas of the residential properties on the upper floors will generally be slightly larger than those on the lower floors because of the reducing thickness of the structural walls on the upper floors.

Notes:

- The internal ceiling height within residential properties may vary due to structural, architectural and/or decoration design variations.
- The dimensions in the floor plans are all structural dimensions in millimetre.
- Please refer to pages 19 to 21 of this sales brochure for legend of the terms and abbreviations in studying the floor plans.
- For details of the noise mitigation measures, please refer to the Relevant Information section in this sales brochure.



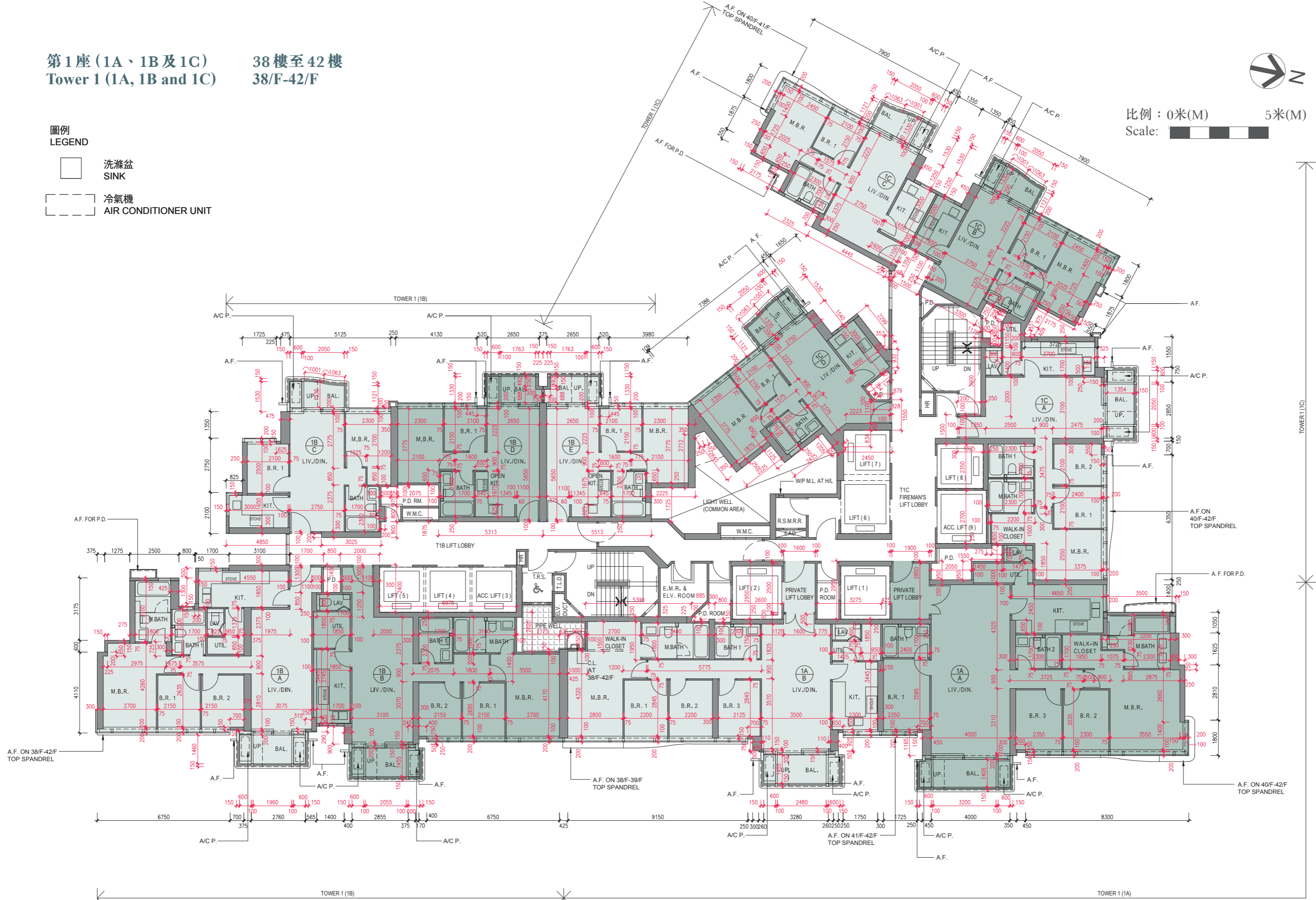
第1座 (1A、1B及1C)
Tower 1 (1A, 1B and 1C)

38樓至42樓
38/F-42/F

圖例
LEGEND

-  洗滌盆
SINK
-  冷氣機
AIR CONDITIONER UNIT

比例：0米(M) 5米(M)
Scale: 





第1座(1A、1B及1C) 38樓至42樓
Tower 1 (1A, 1B and 1C) 38/F-42/F

描述 Description		每個住宅物業的層與層之間的高度(指該樓層之石屎地台面與上一層石屎地台面之高度距離)(毫米) The floor-to-floor height (refers to the height between the top surface of the structural slab of a floor and the top surface of the structural slab of its immediate upper floor) of each residential property (mm)					每個住宅物業的樓板(不包括灰泥)的厚度(毫米) The thickness of the floor slabs (excluding plaster) of each residential property (mm)							
座 Tower	樓層 Floor	單位 Unit		A	B	A	B		E					
第1座(1A) Tower 1 (1A)	38樓至41樓 38/F-41/F	3150					150, 500		150, 175, 500					
	42樓 42/F	3000, 3050, 3100, 3300, 3325, 3350, 3400, 3450, 3650, 3700, 3750		3000, 3050, 3150, 3325, 3400, 3475, 3700		150, 400, 500		150, 175, 500						
座 Tower	樓層 Floor	單位 Unit		A	B	C	D	E	A	B	C	D	E	
第1座(1B) Tower 1 (1B)	38樓至41樓 38/F-41/F	3150					150, 500	150, 175, 500		150, 500	150, 500	150, 500		
	42樓 42/F	3150, 3300, 3325, 3350, 3400, 3700, 3750,	3050, 3100, 3325, 3350, 3400, 3475, 3625, 3650, 3700	3000, 3300, 3400, 3650, 3700	3000, 3200, 3250, 3325, 3400, 3700	3400, 3650, 3700	150, 200, 500	150, 175, 200, 500		150, 500	150	150		
座 Tower	樓層 Floor	單位 Unit		A	B	C	D	A	B	C	D			
第1座(1C) Tower 1 (1C)	38樓至41樓 38/F-41/F	3150					150, 175, 500		150, 500		150, 500		150, 500	
	42樓 42/F	3000, 3050, 3100, 3300, 3325, 3350, 3400, 3700	3000, 3325, 3400, 3650, 3700	3100, 3400, 3650, 3700	3150, 3400, 3650		150, 175, 500		150, 500		150, 700		150, 500	

因住宅物業的較高樓層的結構牆的厚度遞減，較高樓層的內部面積，一般比較低樓層的內部面積稍大。

The internal areas of the residential properties on the upper floors will generally be slightly larger than those on the lower floors because of the reducing thickness of the structural walls on the upper floors.

備註：

- 住宅物業之天花高度將會因應其結構、建築及/或裝修設計上的差異而有所不同。
- 樓面平面圖之尺規所列數字為以毫米標示之建築結構尺寸。
- 請參閱本售樓說明書第19至21頁之圖例以協助閱讀樓面平面圖之名稱和簡稱。
- 有關噪音緩解措施之詳情，請參閱本售樓說明書的有關資料章節。

Notes:

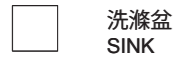
- The internal ceiling height within residential properties may vary due to structural, architectural and/or decoration design variations.
- The dimensions in the floor plans are all structural dimensions in millimetre.
- Please refer to pages 19 to 21 of this sales brochure for legend of the terms and abbreviations in studying the floor plans.
- For details of the noise mitigation measures, please refer to the Relevant Information section in this sales brochure.

期數的住宅物業的樓面平面圖 FLOOR PLANS OF RESIDENTIAL PROPERTIES IN THE PHASE



第1座 (1A、1B及1C) 43樓
Tower 1 (1A, 1B and 1C) 43/F

圖例
LEGEND



洗滌盆
SINK

比例：0米(M) 5米(M)
Scale: 5米(M)





第1座(1A、1B及1C) 43樓
Tower 1 (1A, 1B and 1C) 43/F

描述 Description		每個住宅物業的層與層之間的高度(指該樓層之石屎地台面與上一層石屎地台面之高度距離)(毫米) The floor-to-floor height (refers to the height between the top surface of the structural slab of a floor and the top surface of the structural slab of its immediate upper floor) of each residential property (mm)		每個住宅物業的樓板(不包括灰泥)的厚度(毫米) The thickness of the floor slabs (excluding plaster) of each residential property (mm)		
座 Tower	樓層 Floor	單位 Unit	A	B	A	B
第1座(1A) Tower 1 (1A)	43樓 43/F		3400, 3475, 3700, 3750, 3800, 3850	3400, 3475, 3650, 3700, 3750, 3800	150, 175, 200, 225	150, 200
第1座(1B) Tower 1 (1B)	43樓 43/F		3400, 3475, 3650, 3700, 3750, 3800, 3850	3400, 3475, 3650, 3700, 3800, 3850	150, 175	150, 200
第1座(1C) Tower 1 (1C)	43樓 43/F		A 3400, 3475, 3700, 3800, 3850		A 150, 175	

因住宅物業的較高樓層的結構牆的厚度遞減，較高樓層的內部面積，一般比較低樓層的內部面積稍大。

備註：

- 住宅物業之天花高度將會因應其結構、建築及/或裝修設計上的差異而有所不同。
- 樓面平面圖之尺規所列數字為以毫米標示之建築結構尺寸。
- 請參閱本售樓說明書第19至21頁之圖例以協助閱讀樓面平面圖之名稱和簡稱。
- 有關噪音緩解措施之詳情，請參閱本售樓說明書的有關資料章節。

The internal areas of the residential properties on the upper floors will generally be slightly larger than those on the lower floors because of the reducing thickness of the structural walls on the upper floors.

Notes:

- The internal ceiling height within residential properties may vary due to structural, architectural and/or decoration design variations.
- The dimensions in the floor plans are all structural dimensions in millimetre.
- Please refer to pages 19 to 21 of this sales brochure for legend of the terms and abbreviations in studying the floor plans.
- For details of the noise mitigation measures, please refer to the Relevant Information section in this sales brochure.

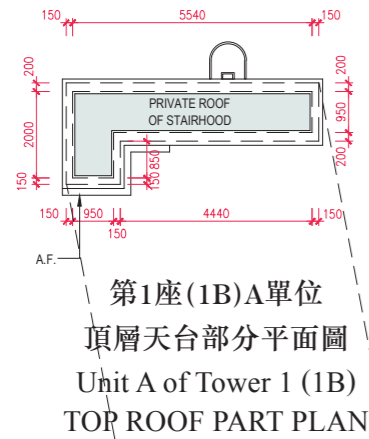


第1座(1A、1B及1C) 天台
Tower 1 (1A, 1B and 1C) Roof

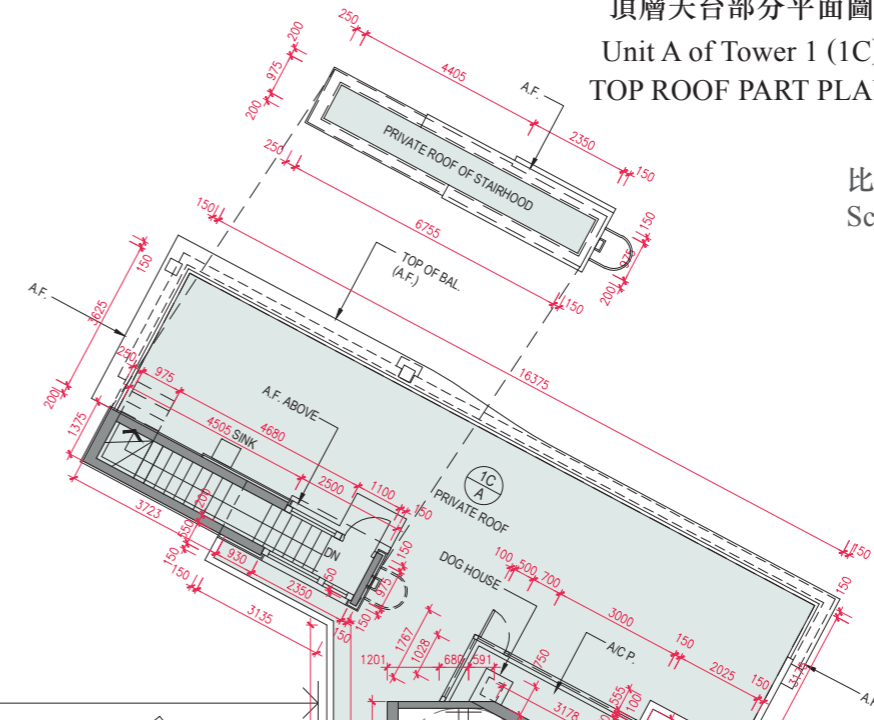
第1座(1C)A單位
頂層天台部分平面圖
Unit A of Tower 1 (1C)
TOP ROOF PART PLAN



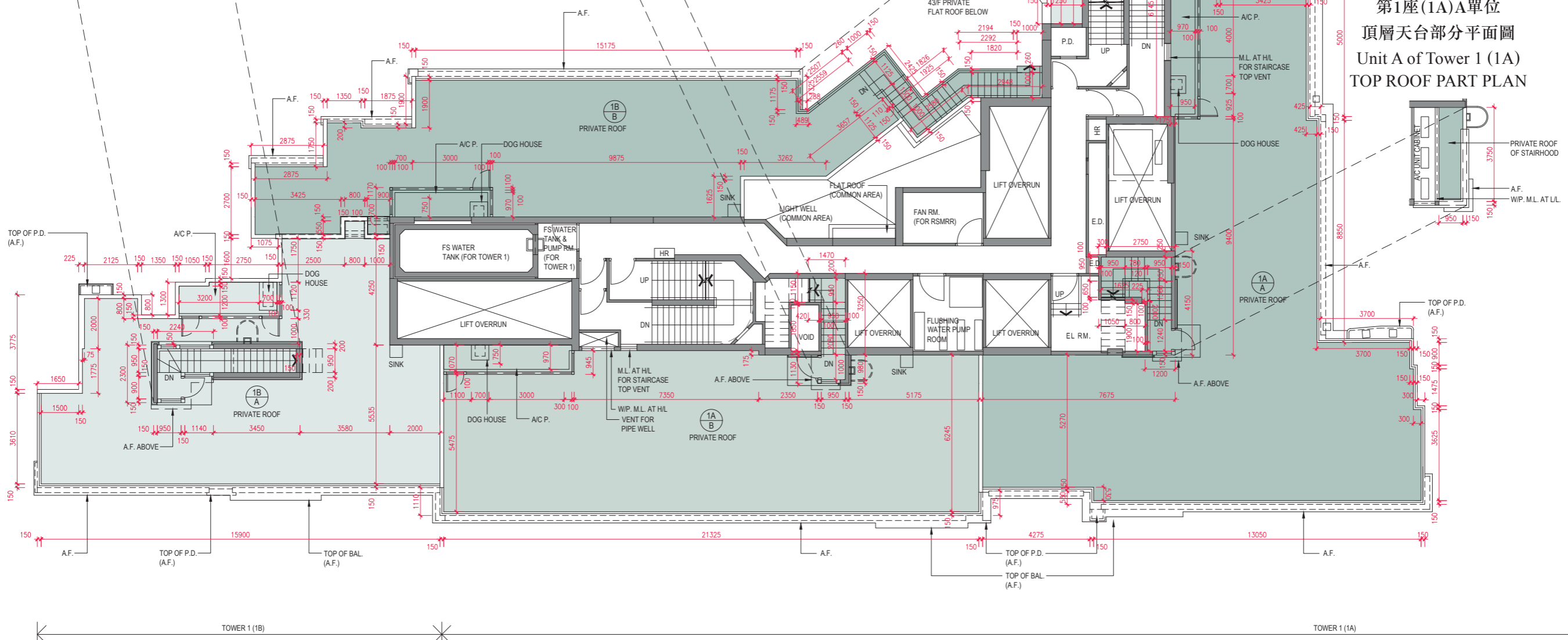
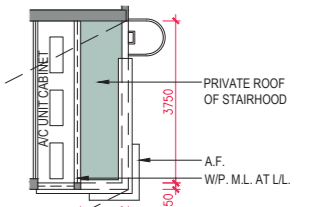
比例：0米(M) 5米(M)
Scale: 5米(M)



第1座(1A)B單位
頂層天台部分平面圖
Unit B of Tower 1 (1A)
TOP ROOF PART PLAN



第1座(1A)A單位
頂層天台部分平面圖
Unit A of Tower 1 (1A)
TOP ROOF PART PLAN





第1座(1A、1B及1C) 天台
Tower 1 (1A, 1B and 1C) Roof

描述 Description		每個住宅物業的層與層之間的高度(指該樓層之石屎地台面與上一層石屎地台面之高度距離)(毫米) The floor-to-floor height (refers to the height between the top surface of the structural slab of a floor and the top surface of the structural slab of its immediate upper floor) of each residential property (mm)		每個住宅物業的樓板(不包括灰泥)的厚度(毫米) The thickness of the floor slabs (excluding plaster) of each residential property (mm)	
座 Tower	樓層 Floor / 單位 Unit	A	B	A	B
第1座(1A) Tower 1 (1A)	天台 Roof	不適用 Not applicable	不適用 Not applicable	不適用 Not applicable	不適用 Not applicable
第1座(1B) Tower 1 (1B)	天台 Roof	不適用 Not applicable	不適用 Not applicable	不適用 Not applicable	不適用 Not applicable
第1座(1C) Tower 1 (1C)	天台 Roof	不適用 Not applicable		不適用 Not applicable	

因住宅物業的較高樓層的結構牆的厚度遞減，較高樓層的內部面積，一般比較低樓層的內部面積稍大。

備註：

- 住宅物業之天花高度將會因應其結構、建築及/或裝修設計上的差異而有所不同。
- 樓面平面圖之尺規所列數字為以毫米標示之建築結構尺寸。
- 請參閱本售樓說明書第19至21頁之圖例以協助閱讀樓面平面圖之名稱和簡稱。
- 有關噪音緩解措施之詳情，請參閱本售樓說明書的有關資料章節。

The internal areas of the residential properties on the upper floors will generally be slightly larger than those on the lower floors because of the reducing thickness of the structural walls on the upper floors.

Notes:

- The internal ceiling height within residential properties may vary due to structural, architectural and/or decoration design variations.
- The dimensions in the floor plans are all structural dimensions in millimetre.
- Please refer to pages 19 to 21 of this sales brochure for legend of the terms and abbreviations in studying the floor plans.
- For details of the noise mitigation measures, please refer to the Relevant Information section in this sales brochure.