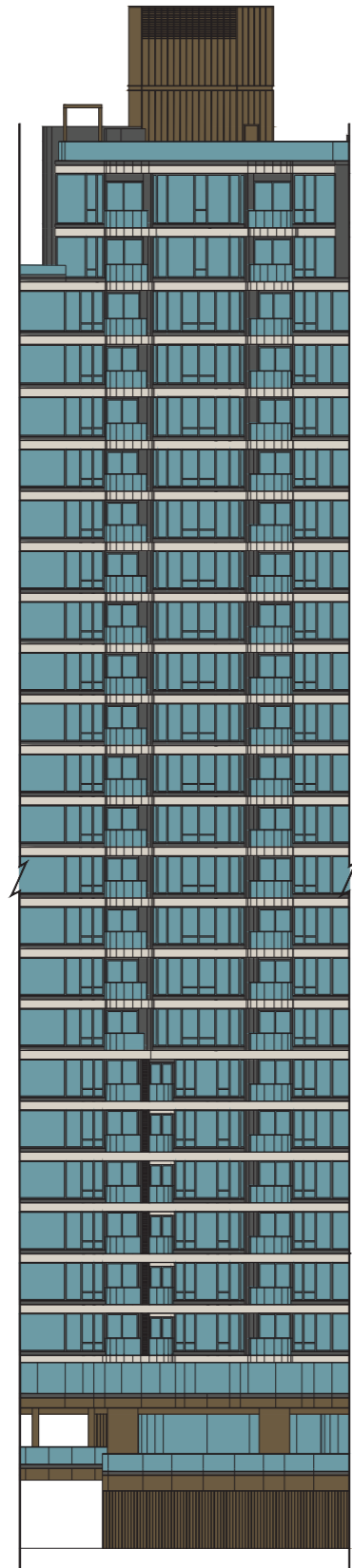
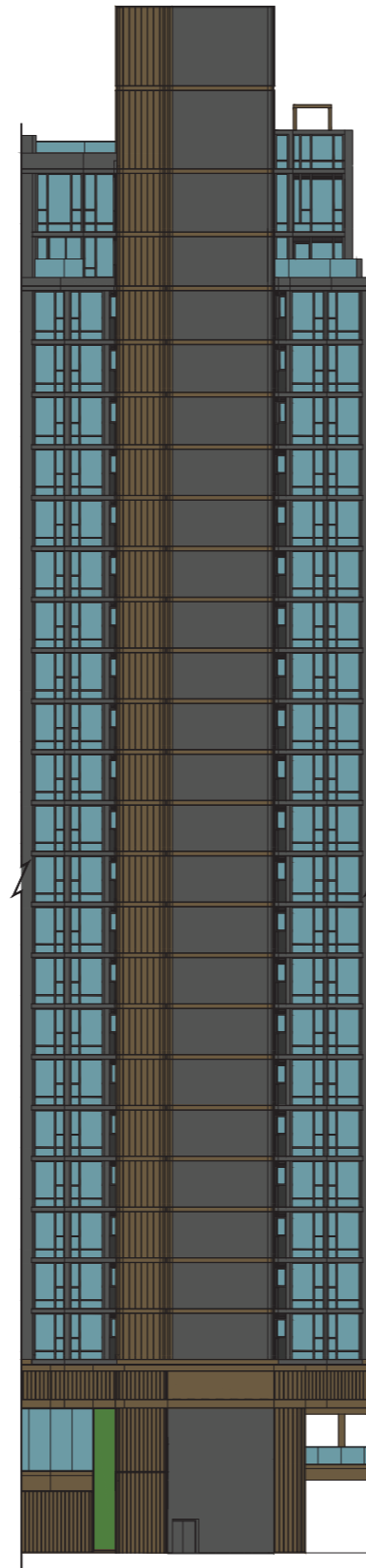


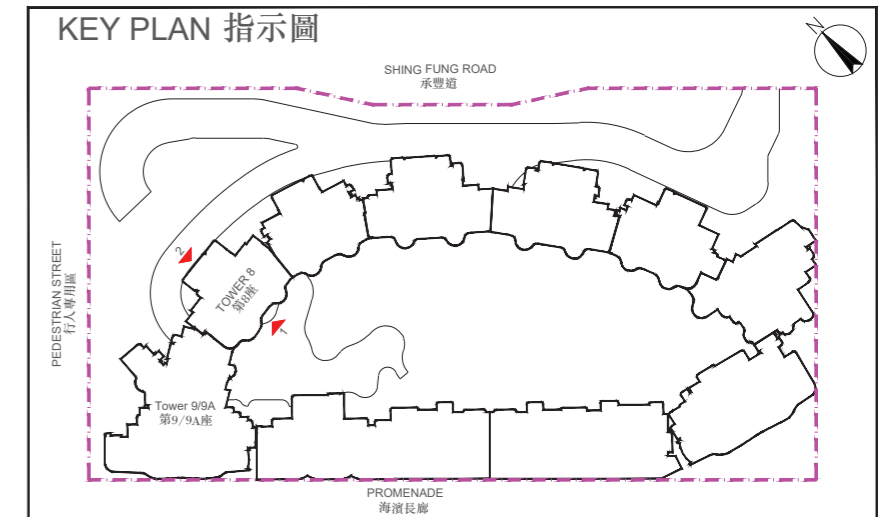
ELEVATION PLAN 立面圖



TOWER 8 ELEVATION 1
第8座 立面1



TOWER 8 ELEVATION 2
第8座 立面2



— Boundary of the Development
發展項目的界線

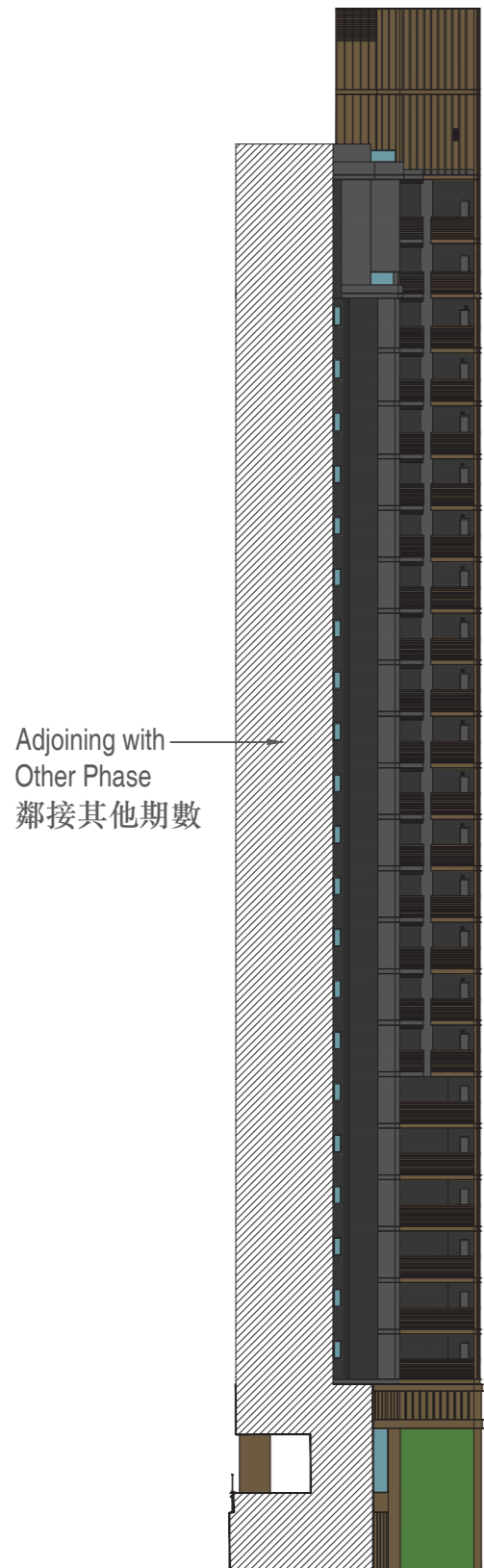
Authorized Person for the Phase certified that the elevations shown on this plan:

- (a) are prepared on the basis of the approved building plans for the Phase as of 13 October 2025; and
- (b) are in general accordance with the outward appearance of the Phase.

期數的認可人士證明本圖顯示的立面:

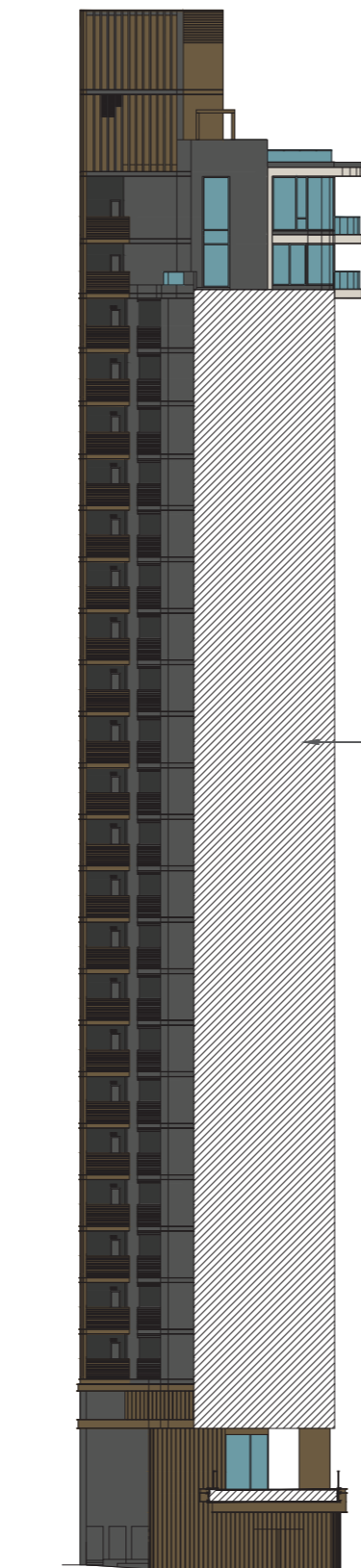
- (a) 以2025年10月13日的情況為準的期數的經批准的建築圖則為基礎擬備; 及
- (b) 大致上與期數的外觀一致。

ELEVATION PLAN 立面圖



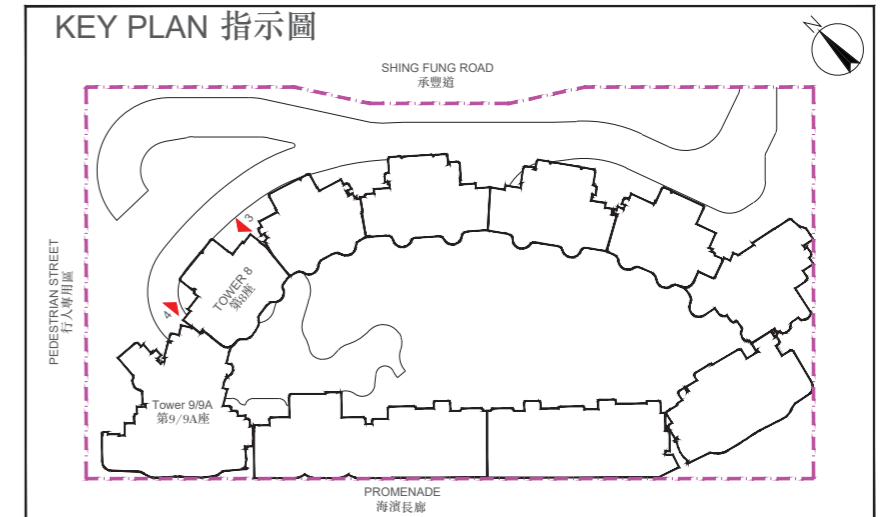
Adjoining with
Other Phase
鄰接其他期數

TOWER 8 ELEVATION 3
第8座 立面3



Adjoining with
Tower 9A
鄰接第9A座

TOWER 8 ELEVATION 4
第8座 立面4



--- Boundary of the Development
發展項目的界線

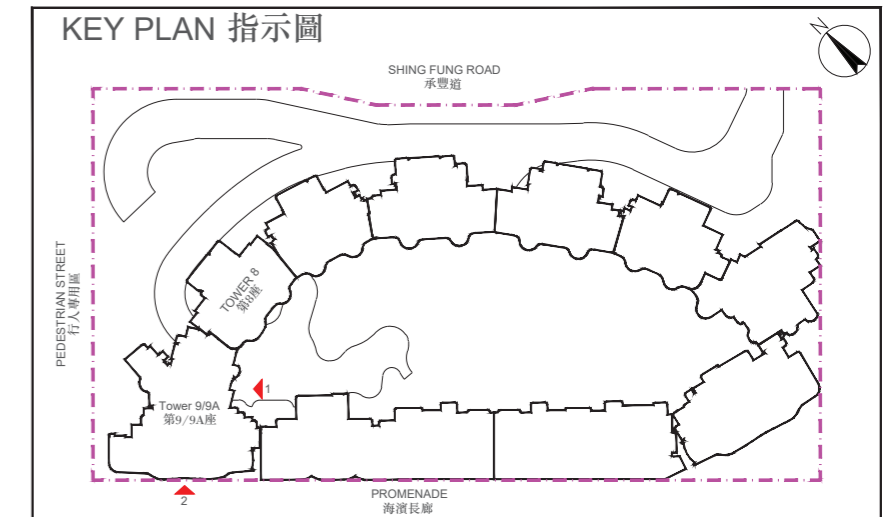
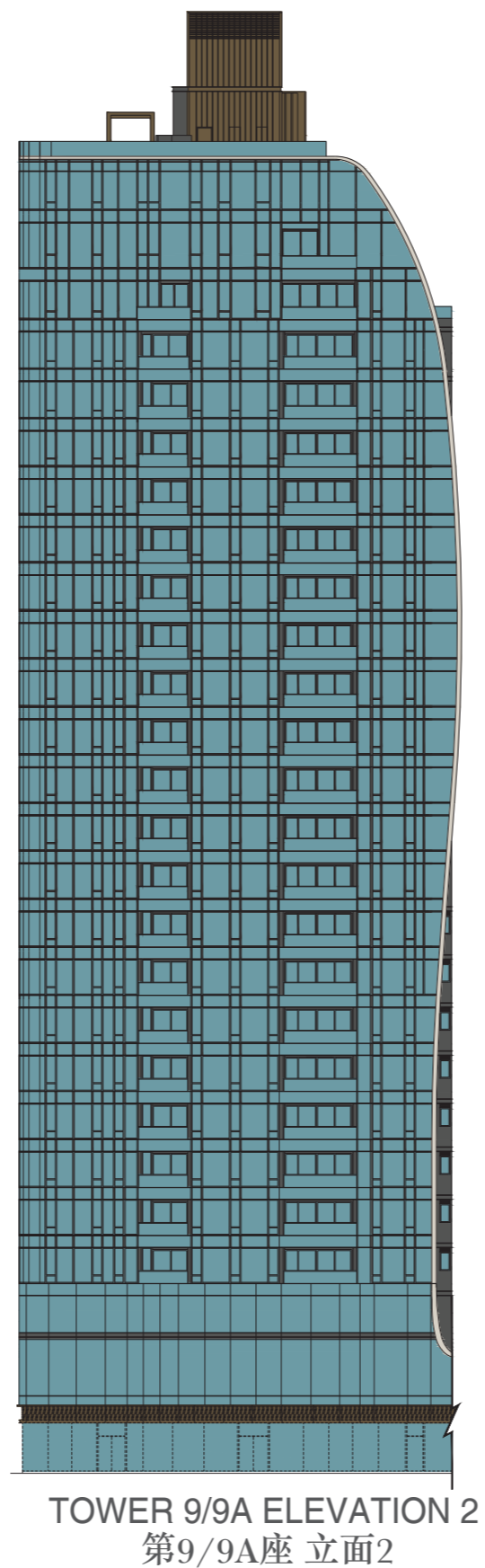
Authorized Person for the Phase certified that the elevations shown on this plan:

- (a) are prepared on the basis of the approved building plans for the Phase as of 13 October 2025; and
- (b) are in general accordance with the outward appearance of the Phase.

期數的認可人士證明本圖顯示的立面:

- (a) 以2025年10月13日的情況為準的期數的經批准的建築圖則為基礎擬備; 及
- (b) 大致上與期數的外觀一致。

ELEVATION PLAN 立面圖



--- Boundary of the Development
發展項目的界線

Authorized Person for the Phase certified that the elevations shown on this plan:

- (a) are prepared on the basis of the approved building plans for the Phase as of 13 October 2025; and
- (b) are in general accordance with the outward appearance of the Phase.

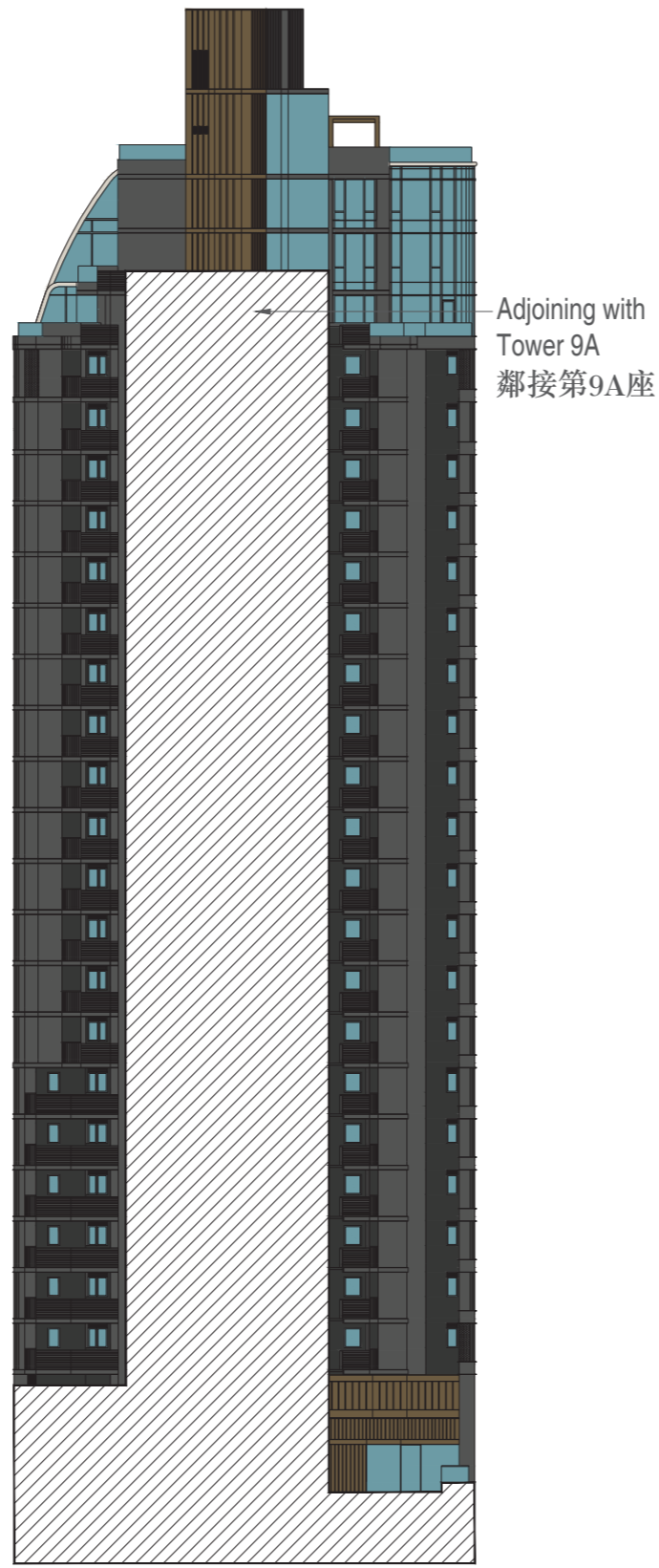
期數的認可人士證明本圖顯示的立面:

- (a) 以2025年10月13日的情況為準的期數的經批准的建築圖則為基礎擬備; 及
- (b) 大致上與期數的外觀一致。

ELEVATION PLAN 立面圖



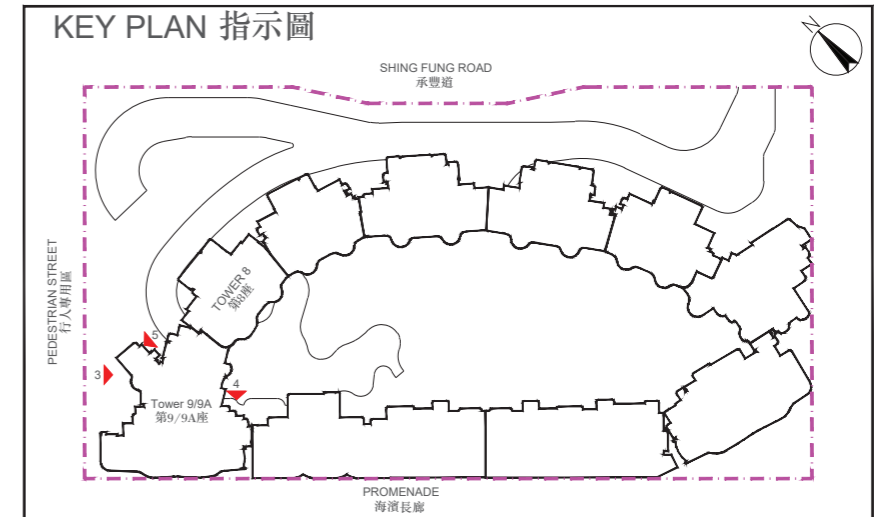
TOWER 9/9A ELEVATION 3
第9/9A座 立面3



TOWER 9/9A ELEVATION 4
第9/9A座 立面4



TOWER 9/9A ELEVATION 5
第9/9A座 立面5



--- Boundary of the Development
發展項目的界線

Authorized Person for the Phase certified that the elevations shown on this plan:

- (a) are prepared on the basis of the approved building plans for the Phase as of 13 October 2025; and
- (b) are in general accordance with the outward appearance of the Phase.

期數的認可人士證明本圖顯示的立面:

- (a) 以2025年10月13日的情況為準的期數的經批准的建築圖則為基礎擬備; 及
- (b) 大致上與期數的外觀一致。