

FLOOR PLANS OF RESIDENTIAL PROPERTIES IN THE DEVELOPMENT

發展項目的住宅物業的樓面平面圖

Legend of Terms and Abbreviations used on Floor Plans:

樓面平面圖中所使用名詞及簡稱之圖例：

1100mm H. R.C. Parapet Wall	= 1100毫米(高)鋼筋混凝土護牆 1100mm (Height) Reinforced Concrete Parapet Wall
1200mm H. R.C. Parapet Wall	= 1200毫米(高)鋼筋混凝土護牆 1200mm (Height) Reinforced Concrete Parapet Wall
1500mm H. R.C. Parapet Wall	= 1500毫米(高)鋼筋混凝土護牆 1500mm (Height) Reinforced Concrete Parapet Wall
1800mm H. R.C. Parapet Wall	= 1800毫米(高)鋼筋混凝土護牆 1800mm (Height) Reinforced Concrete Parapet Wall
1800mm H. Fence Wall	= 1800毫米(高)分隔牆 1800mm (Height) Fence Wall
1250mm H. Glass Balustrade	= 1250毫米(高)玻璃欄河 1250mm (Height) Glass Balustrade
1800mm H. Glass Balustrade	= 1800毫米(高)玻璃欄河 1800mm (Height) Glass Balustrade
A/C Platform	= 空調機平台 Air-Conditioner Platform
A/C Plinth	= 空調機機台 Air-Conditioner Plinth
A.F.	= 建築裝飾 Architectural Feature
A.F. Above	= 建築裝飾置上 Architectural Feature Above
Bal.	= 露台 Balcony
Bal. / U.P.	= 露台 / 工作平台 Balcony / Utility Platform
Bal./ U.P. Above	= 露台 / 工作平台置上 Balcony / Utility Platform above
Bath.	= 浴室 Bathroom
Bath. 1	= 浴室 Bathroom 1
Bath. 2	= 浴室 Bathroom 2
B.R. 1	= 睡房 Bedroom 1
B.R. 2	= 睡房 Bedroom 2
B.R. 3	= 睡房 Bedroom 3
Cable Riser Duct	= 電纜管井
Common Flat Roof	= 公共平台
Concrete Plinth For Washer Dryer	= 洗衣乾衣機機台
DN	= 下 Down
Eave Above	= 屋簷置上
E.C.D.	= 電線管道 Electric Cable Duct
E.M.R.	= 電錶房 Electrical Meter Room
Ext. P.D.	= 室外管槽 External Pipe Duct
H.R.	= 消防喉轆 Hose Reel
Kit.	= 廚房 Kitchen
Lav.	= 洗手間 Lavatory
Lift 1	= 升降機 1
Lift 2	= 升降機 2
Lift 3	= 升降機 3
Lift Lobby	= 升降機大堂
Lift Overrun	= 升降機槽
Liv. / Din.	= 客廳 / 飯廳 Living Room / Dining Room
Open Kit.	= 開放式廚房 Open Kitchen
Private Flat Roof for Unit A	= A單位私人平台
Private Flat Roof for Unit G	= G單位私人平台
Private Flat Roof for Unit K	= K單位私人平台
Private Flat Roof for Unit L	= L單位私人平台
Private Flat Roof for Unit H	= H單位私人平台
Private Flat Roof for Unit F	= F單位私人平台
Private Roof (For 23/F Unit A)	= 私人天台(23樓A單位)
Private Roof (For 23/F Unit B)	= 私人天台(23樓B單位)
Private Roof (For 23/F Unit C)	= 私人天台(23樓C單位)

Private Roof (For 23/F Unit D)	= 私人天台(23樓D單位)
Private Roof (For 23/F Unit E)	= 私人天台(23樓E單位)
Private Roof (For 23/F Unit H)	= 私人天台(23樓H單位)
Private Roof (For 23/F Unit L)	= 私人天台(23樓L單位)
P.D.	= 管槽 Pipe Duct
Potable & Flushing Pump Room	= 食水及沖廁水泵房
R.S.M.R.R.	= 垃圾及物料回收室 Refuse Storage and Material Recovery Room
Storage	= 儲物室 Storeroom
Transformer Hatch Opening	= 變壓器吊運井道
Transformer Room	= 變壓器房
Top of Bal.	= 露台上蓋 Top of Balcony
Top of Bal. / U.P.	= 露台 / 工作平台上蓋 Top of Balcony / Utility Platform
UP	= 上 Up
W.M.C.	= 水錶櫃 Water Meter Cabinet
	= 隨樓附送之嵌入式裝置 Built-in fittings provided in the units
	= 隨樓附送之嵌入式裝置 (供安裝洗衣乾衣機) Built-in fittings provided in the units (for Washer Dryer installation)

Explanatory Notes:

1. Common pipes exposed or enclosed in cladding may be located at/adjacent to the balcony, utility platform, air conditioner platform, flat roof, roof or external wall of some residential properties.
2. There may be sunken slabs at some parts of the ceiling inside some residential properties for the installation of mechanical and electrical services of the floor above or due to the structural, architectural and/or decoration design requirements of the floor above.
3. There may be ceiling bulkheads or false ceiling inside some residential properties for the installation of air-conditioner conduits and/or other mechanical and electrical services.
4. The outdoor unit of air-conditioner for some residential properties is placed on the designated air-conditioner platforms or flat roof. Such outdoor unit of air-conditioner may create heat and/or noise.
5. Those icons of fittings and appliances shown on the floor plans of residential properties like wash basins, water closets, shower cubicles, sink units, cabinets (if any) etc. are prepared in accordance with the latest approved building plans. Their shapes, dimensions, scales may be different from the fittings and appliances actually provided and they are for indication and reference only.
6. Balconies and utility platforms are non-enclosed areas.
7. The internal ceiling height within some residential properties may vary due to structural, architectural and/or decoration design variations.
8. There are curtain walls and/or non-structural prefabricated external walls in some/all the residential properties. The saleable area of a residential property has included the area of curtain walls and/or non-structural prefabricated external walls and is measured from the exterior of such curtain walls and/or non-structural prefabricated external walls.

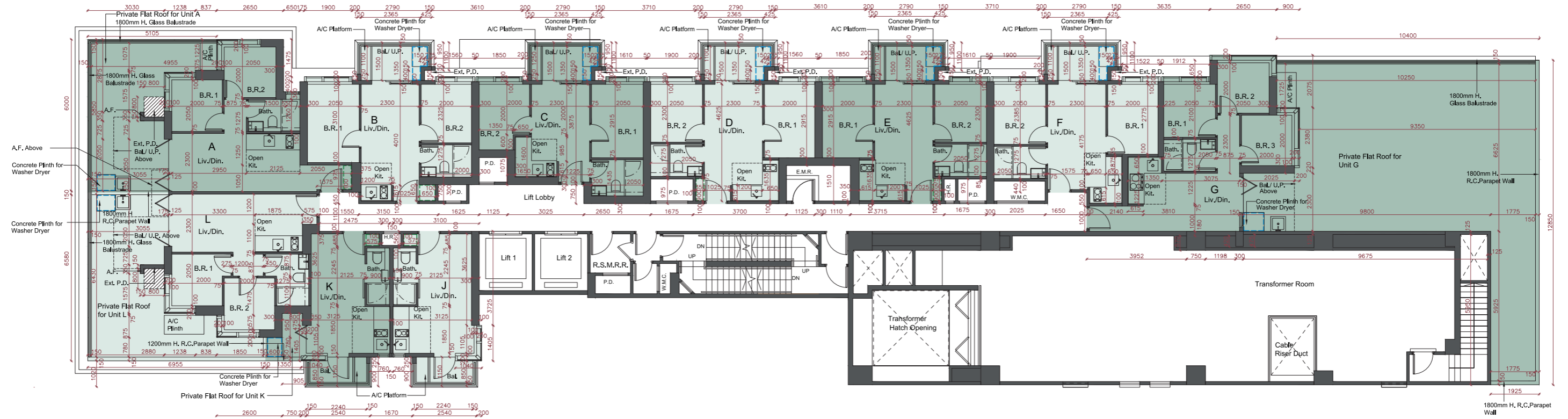
備註:

1. 部分住宅物業的露台、工作平台、空調機平台、平台、天台或外牆上/附近或設有外露之公用喉管/或外牆裝飾板內藏之公用喉管。
2. 部分住宅物業內之部分天花或有跌級樓板，用以安裝上層之機電設備或配合上層之結構、建築及/或裝修設計上的需要。
3. 部分住宅物業內或設有假陣或假天花用以安裝空調喉管及/或其他機電設備。
4. 部分住宅物業的空調機之室外機放置於指定的空調機平台或平台。該等空調機之室外機可能發出熱力及/或聲音。
5. 住宅物業的樓面平面圖內所展示之裝置及設備的圖標如洗面盆、座廁、淋浴間、洗滌盆、櫃(如有)等乃根據最新經批准的建築圖則擬備，其形狀、尺寸、比例或與實際提供的裝置及設備存在差異，僅供示意及參考之用。
6. 露台及工作平台為不可封閉的地方。
7. 部分住宅物業之室內天花高度將會因應結構、建築及/或裝修設計上的需要有所差異。
8. 部份/全部住宅物業有幕牆及/或非結構的預製外牆。住宅物業之實用面積之計算包括幕牆及/或非結構的預製外牆之面積，並由幕牆及/或非結構的預製外牆之外圍起計。


FLOOR PLANS OF RESIDENTIAL PROPERTIES IN THE DEVELOPMENT

發展項目的住宅物業的樓面平面圖

2/F Floor Plan 2樓樓面平面圖



 Designated as common area under Deed of Mutual Covenant
 根據公契將被定為公用地方

Scale 比例:  0M(米) 5M(米)

Note : The dimensions of the floor plan are all structural dimensions in millimeter.
 備註 : 平面圖所列之數字為以毫米標示之建築結構尺寸。

FLOOR PLANS OF RESIDENTIAL PROPERTIES IN THE DEVELOPMENT
發展項目的住宅物業的樓面平面圖

Each of the Residential Property 每個住宅物業	Floor 樓層	Unit 單位				
		A	B	C	D	E
Thickness of the floor slabs (excluding plaster)(mm) 樓板(不包括灰泥)的厚度(毫米)	2/F 2樓	135, 150, 165	135, 150, 325	135, 150, 325	135, 150, 165, 325	135, 150, 165, 325
Floor-to-floor height (mm) 層與層之間的高度(毫米)		2800, 3100, 3150	2900, 3100, 3150	2800, 2900, 3100, 3150	2900, 3100, 3150	2900, 3100, 3150
		F	G	J	K	L
Thickness of the floor slabs (excluding plaster)(mm) 樓板(不包括灰泥)的厚度(毫米)		135, 150, 165, 325	135, 150	135, 150, 325	135, 150, 325	135, 150, 165
Floor-to-floor height (mm) 層與層之間的高度(毫米)		2900, 3000, 3100, 3150	2800, 3100, 3150	2800, 3000, 3100, 3150	2800, 3000, 3100, 3150	2800, 3100, 3150

The internal areas of the residential properties on the upper floors will generally be slightly larger than those on the lower floors because of the reducing thickness of the structural walls on the upper floors.
 因住宅物業的較高樓層的結構牆的厚度遞減，較高樓層的內部面積，一般比較低樓層的內部面積稍大。

Notes :

1. Please refer to page 24 of this Sales Brochure for legend of the terms and abbreviations used on the floor plan and the explanatory notes that are applicable thereto.
2. 4/F, 13/F and 14/F are omitted.

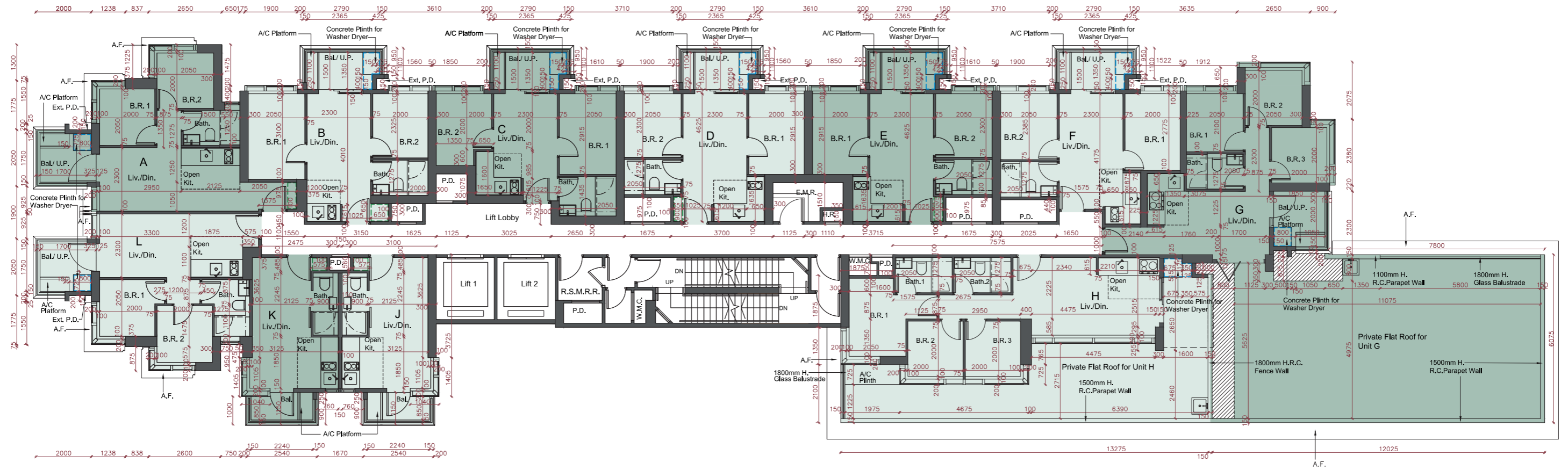
備註：


1. 樓面平面圖中所使用名詞及簡稱之圖例及其適用的備註，請參閱本售樓說明書第24頁。
2. 不設4樓、13樓及14樓。


FLOOR PLANS OF RESIDENTIAL PROPERTIES IN THE DEVELOPMENT

發展項目的住宅物業的樓面平面圖

3/F Floor Plan 3樓樓面平面圖



 Designated as common area under Deed of Mutual Covenant
 根據公契將被定為公用地方

Scale 比例:  0M(米) 5M(米)

Note : The dimensions of the floor plan are all structural dimensions in millimeter.
 備註 : 平面圖所列之數字為以毫米標示之建築結構尺寸。

FLOOR PLANS OF RESIDENTIAL PROPERTIES IN THE DEVELOPMENT 發展項目的住宅物業的樓面平面圖

Each of the Residential Property 每個住宅物業	Floor 樓層	Unit 單位					
		A	B	C	D	E	F
Thickness of the floor slabs (excluding plaster)(mm) 樓板(不包括灰泥)的厚度(毫米)	3/F 3樓	135, 150, 165	135, 150, 325	135, 150, 325	135, 150, 165, 325	135, 150, 165, 325	135, 150, 165, 325
Floor-to-floor height (mm) 層與層之間的高度(毫米)		2800, 3100, 3150	2900, 3100, 3150	2800, 2900, 3100, 3150	2900, 3100, 3150	2900, 3100, 3150	2900, 3000, 3100, 3150
		G	H	J	K	L	
Thickness of the floor slabs (excluding plaster)(mm) 樓板(不包括灰泥)的厚度(毫米)		135, 150	135, 150	135, 150, 325	135, 150, 325	135, 150, 165	
Floor-to-floor height (mm) 層與層之間的高度(毫米)		2800, 3100, 3150	2800, 2900, 3100, 3150	2800, 3000, 3100, 3150	2800, 3000, 3100, 3150	2800, 3100, 3150	

The internal areas of the residential properties on the upper floors will generally be slightly larger than those on the lower floors because of the reducing thickness of the structural walls on the upper floors.
因住宅物業的較高樓層的結構牆的厚度遞減，較高樓層的內部面積，一般比較低樓層的內部面積稍大。

Notes :

1. Please refer to page 24 of this Sales Brochure for legend of the terms and abbreviations used on the floor plan and the explanatory notes that are applicable thereto.
2. 4/F, 13/F and 14/F are omitted.

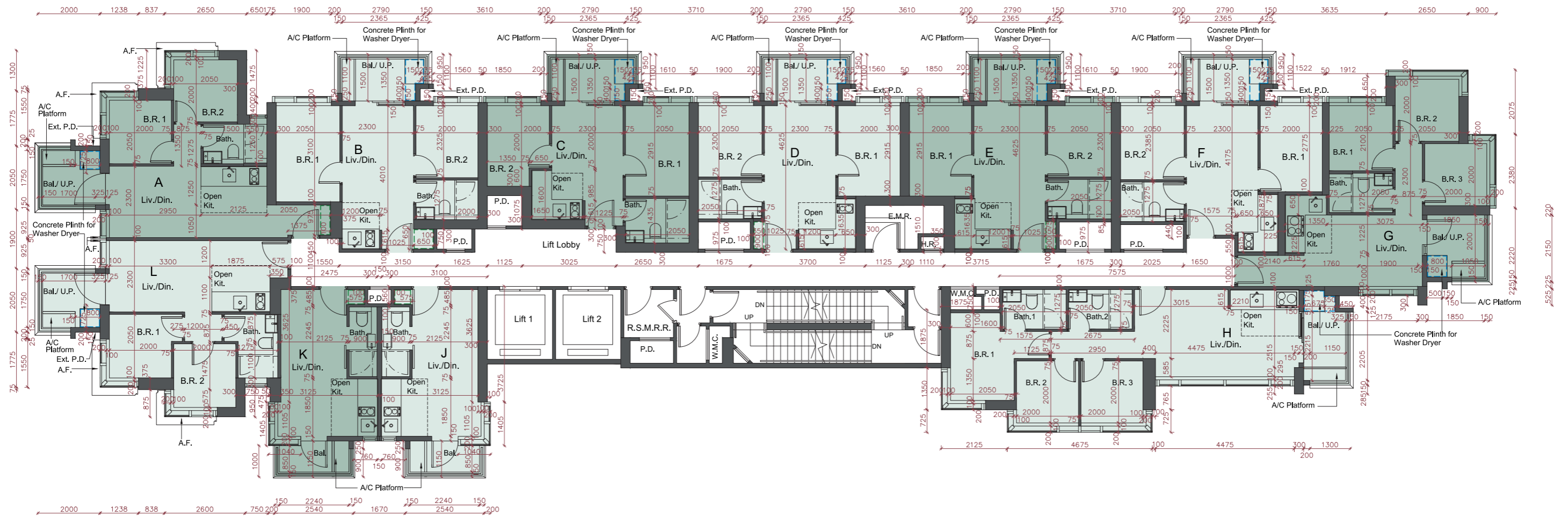
備註：

1. 樓面平面圖中所使用名詞及簡稱之圖例及其適用的備註，請參閱本售樓說明書第24頁。
2. 不設4樓、13樓及14樓。

FLOOR PLANS OF RESIDENTIAL PROPERTIES IN THE DEVELOPMENT

發展項目的住宅物業的樓面平面圖

5/F-10/F Floor Plan 5樓至10樓 樓面平面圖



Scale 比例: 0M(米) 5M(米)

Note : The dimensions of the floor plan are all structural dimensions in millimeter.
備註 : 平面圖所列之數字為以毫米標示之建築結構尺寸。

FLOOR PLANS OF RESIDENTIAL PROPERTIES IN THE DEVELOPMENT 發展項目的住宅物業的樓面平面圖

Each of the Residential Property 每個住宅物業	Floor 樓層	Unit 單位					
		A	B	C	D	E	F
Thickness of the floor slabs (excluding plaster)(mm) 樓板(不包括灰泥)的厚度(毫米)	5/F-9/F 5樓至9樓	135, 150, 165	135, 150, 325	135, 150, 325	135, 150, 165, 325	135, 150, 165, 325	135, 150, 165, 325
Floor-to-floor height (mm) 層與層之間的高度(毫米)		2800, 3100, 3150	2900, 3100, 3150	2800, 2900, 3100, 3150	2900, 3100, 3150	2900, 3100, 3150	2900, 3000, 3100, 3150
		G	H	J	K	L	
Thickness of the floor slabs (excluding plaster)(mm) 樓板(不包括灰泥)的厚度(毫米)		135, 150	135, 150	135, 150, 325	135, 150, 325	135, 150, 165	
Floor-to-floor height (mm) 層與層之間的高度(毫米)		2800, 3100, 3150	2800, 2900, 3100, 3150	2800, 3000, 3100, 3150	2800, 3000, 3100, 3150	2800, 3100, 3150	

The internal areas of the residential properties on the upper floors will generally be slightly larger than those on the lower floors because of the reducing thickness of the structural walls on the upper floors.
因住宅物業的較高樓層的結構牆的厚度遞減，較高樓層的內部面積，一般比較低樓層的內部面積稍大。

Notes :

1. Please refer to page 24 of this Sales Brochure for legend of the terms and abbreviations used on the floor plan and the explanatory notes that are applicable thereto.
2. 4/F, 13/F and 14/F are omitted.

備註：

1. 樓面平面圖中所使用名詞及簡稱之圖例及其適用的備註，請參閱本售樓說明書24頁。
2. 不設4樓、13樓及14樓。

FLOOR PLANS OF RESIDENTIAL PROPERTIES IN THE DEVELOPMENT
發展項目的住宅物業的樓面平面圖

Each of the Residential Property 每個住宅物業	Floor 樓層	Unit 單位					
		A	B	C	D	E	F
Thickness of the floor slabs (excluding plaster)(mm) 樓板(不包括灰泥)的厚度(毫米)	10/F 10樓	135, 150, 165	135, 150, 325	135, 150, 325	135, 150, 165, 325	135, 150, 165, 325	135, 150, 165, 325
Floor-to-floor height (mm) 層與層之間的高度(毫米)		2800, 3100, 3150	2900, 3100, 3150	2800, 2900, 3100, 3150	2900, 3100, 3150	2900, 3100, 3150	2800, 3100, 3150
		G	H	J	K	L	
Thickness of the floor slabs (excluding plaster)(mm) 樓板(不包括灰泥)的厚度(毫米)		135, 150	135, 150	135, 150, 325	135, 150, 325	135, 150, 165	
Floor-to-floor height (mm) 層與層之間的高度(毫米)		2900, 3150	2800, 2900, 3100, 3150	2800, 3000, 3100, 3150	2800, 3000, 3100, 3150	2800, 3100, 3150	

The internal areas of the residential properties on the upper floors will generally be slightly larger than those on the lower floors because of the reducing thickness of the structural walls on the upper floors.
 因住宅物業的較高樓層的結構牆的厚度遞減，較高樓層的內部面積，一般比較低樓層的內部面積稍大。

Notes :

1. Please refer to page 24 of this Sales Brochure for legend of the terms and abbreviations used on the floor plan and the explanatory notes that are applicable thereto.
2. 4/F, 13/F and 14/F are omitted.

備註：

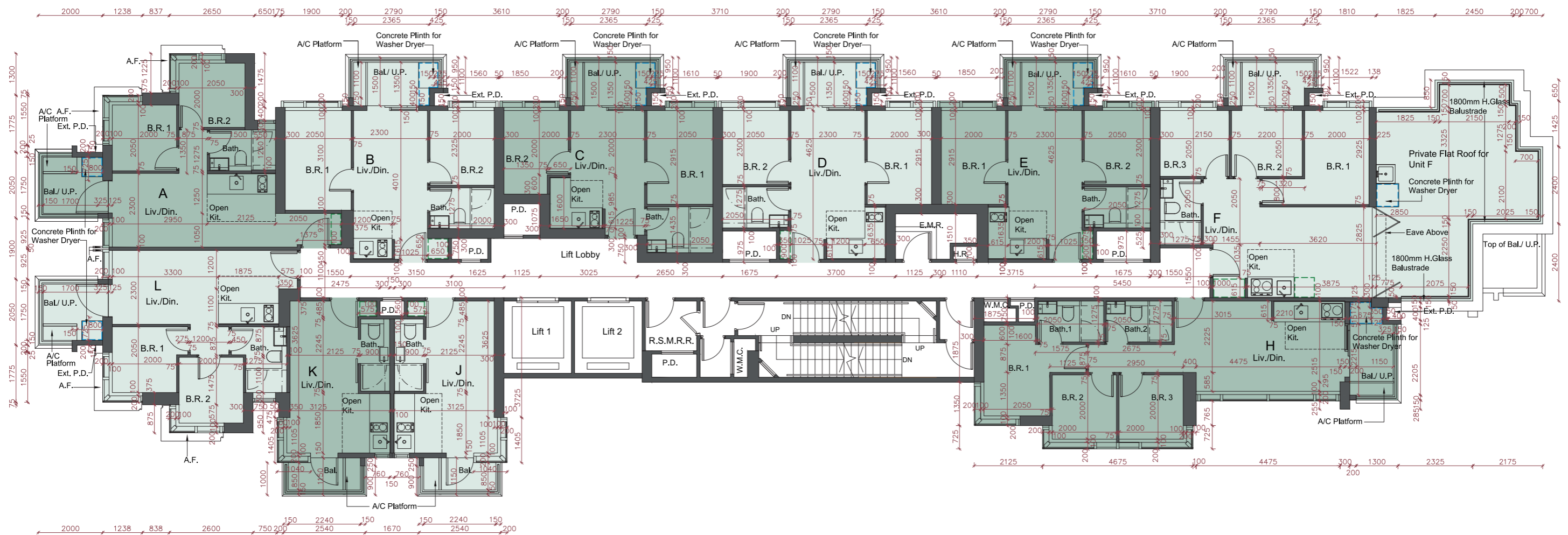
1. 樓面平面圖中所使用名詞及簡稱之圖例及其適用的備註，請參閱本售樓說明書24頁。
2. 不設4樓、13樓及14樓。

FLOOR PLANS OF RESIDENTIAL PROPERTIES IN THE DEVELOPMENT

發展項目的住宅物業的樓面平面圖

11/F Floor Plan

11樓樓面平面圖



Scale 比例: 0M(米) 5M(米)

Note : The dimensions of the floor plan are all structural dimensions in millimeter.
備註 : 平面圖所列之數字為以毫米標示之建築結構尺寸。

FLOOR PLANS OF RESIDENTIAL PROPERTIES IN THE DEVELOPMENT
發展項目的住宅物業的樓面平面圖

Each of the Residential Property 每個住宅物業	Floor 樓層	Unit 單位				
		A	B	C	D	E
Thickness of the floor slabs (excluding plaster)(mm) 樓板(不包括灰泥)的厚度(毫米)	11/F 11樓	135, 150, 165	135, 150, 325	135, 150, 325	135, 150, 165, 325	135, 150, 165, 325
Floor-to-floor height (mm) 層與層之間的高度(毫米)		2800, 3100, 3150	2900, 3100, 3150	2800, 2900, 3100, 3150	2900, 3100, 3150	2900, 3100, 3150
		F	H	J	K	L
Thickness of the floor slabs (excluding plaster)(mm) 樓板(不包括灰泥)的厚度(毫米)		135, 150, 165, 325	135, 150	135, 150, 325	135, 150, 325	135, 150, 165
Floor-to-floor height (mm) 層與層之間的高度(毫米)		2800, 2900, 3100, 3150	2800, 2900, 3100, 3150	2800, 3000, 3100, 3150	2800, 3000, 3100, 3150	2800, 3100, 3150

The internal areas of the residential properties on the upper floors will generally be slightly larger than those on the lower floors because of the reducing thickness of the structural walls on the upper floors.
 因住宅物業的較高樓層的結構牆的厚度遞減，較高樓層的內部面積，一般比較低樓層的內部面積稍大。

Notes :

1. Please refer to page 24 of this Sales Brochure for legend of the terms and abbreviations used on the floor plan and the explanatory notes that are applicable thereto.
2. 4/F, 13/F and 14/F are omitted.

備註：

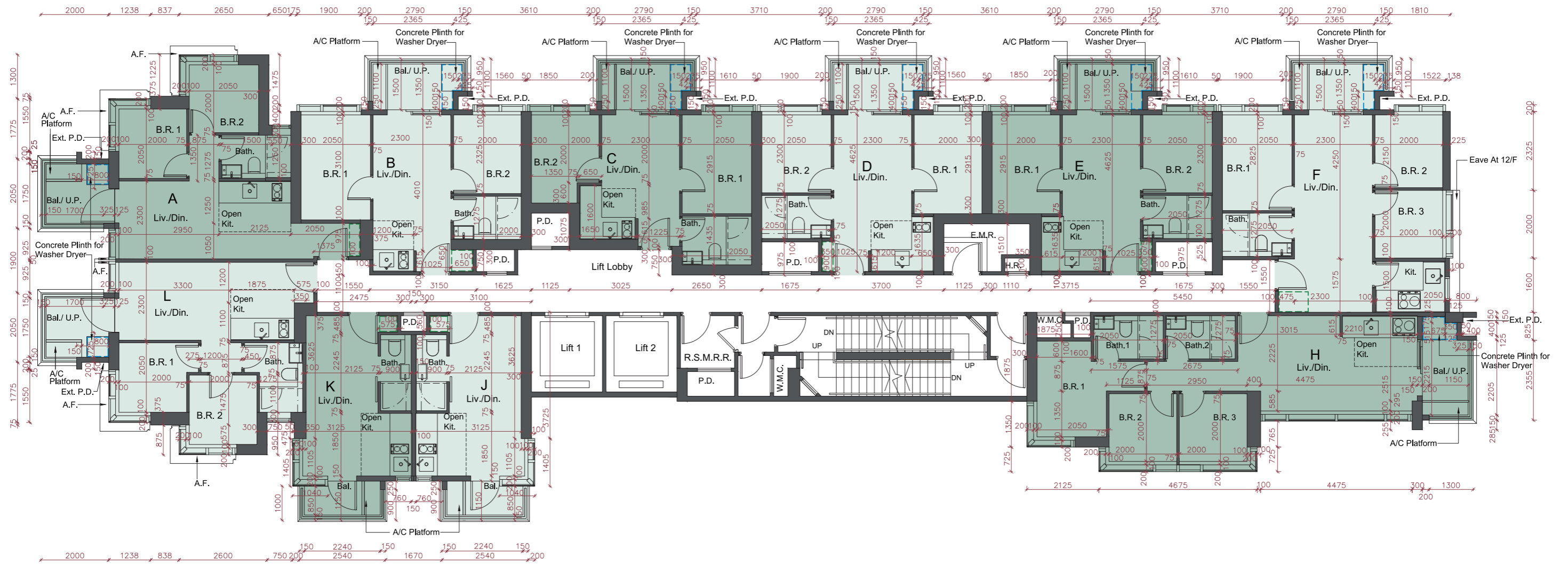
1. 樓面平面圖中所使用名詞及簡稱之圖例及其適用的備註，請參閱本售樓說明書第24頁。
2. 不設4樓、13樓及14樓。

FLOOR PLANS OF RESIDENTIAL PROPERTIES IN THE DEVELOPMENT

發展項目的住宅物業的樓面平面圖

12/F, 15/F-17/F Floor Plan

12樓、15樓至17樓 樓面平面圖



Scale 比例: 0M(米) 5M(米)

Note : The dimensions of the floor plan are all structural dimensions in millimeter.
備註 : 平面圖所列之數字為以毫米標示之建築結構尺寸。

FLOOR PLANS OF RESIDENTIAL PROPERTIES IN THE DEVELOPMENT
發展項目的住宅物業的樓面平面圖

Each of the Residential Property 每個住宅物業	Floor 樓層	Unit 單位				
		A	B	C	D	E
Thickness of the floor slabs (excluding plaster)(mm) 樓板(不包括灰泥)的厚度(毫米)	12/F, 15/F-17/F 12樓、15樓至17樓	135, 150, 165	135, 150, 325	135, 150, 325	135, 150, 165, 325	135, 150, 165, 325
Floor-to-floor height (mm) 層與層之間的高度(毫米)		2800, 3100, 3150	2900, 3100, 3150	2800, 2900, 3100, 3150	2900, 3100, 3150	2900, 3100, 3150
		F	H	J	K	L
Thickness of the floor slabs (excluding plaster)(mm) 樓板(不包括灰泥)的厚度(毫米)		135, 150, 165, 325	135, 150	135, 150, 325	135, 150, 325	135, 150, 165
Floor-to-floor height (mm) 層與層之間的高度(毫米)		2800, 2900, 3100, 3150	2800, 2900, 3100, 3150	2800, 3000, 3100, 3150	2800, 3000, 3100, 3150	2800, 3100, 3150

The internal areas of the residential properties on the upper floors will generally be slightly larger than those on the lower floors because of the reducing thickness of the structural walls on the upper floors.
 因住宅物業的較高樓層的結構牆的厚度遞減，較高樓層的內部面積，一般比較低樓層的內部面積稍大。

Notes :

1. Please refer to page 24 of this Sales Brochure for legend of the terms and abbreviations used on the floor above and the explanatory notes that are applicable thereto.
2. 4/F, 13/F and 14/F are omitted.

備註：

1. 樓面平面圖中所使用名詞及簡稱之圖例及其適用的備註，請參閱本售樓說明書第24頁。
2. 不設4樓、13樓及14樓。

FLOOR PLANS OF RESIDENTIAL PROPERTIES IN THE DEVELOPMENT

發展項目的住宅物業的樓面平面圖

18/F Floor Plan

18樓 樓面平面圖



Note : The dimensions of the floor plan are all structural dimensions in millimeter.
備註 : 平面圖所列之數字為以毫米標示之建築結構尺寸。

FLOOR PLANS OF RESIDENTIAL PROPERTIES IN THE DEVELOPMENT
發展項目的住宅物業的樓面平面圖

Each of the Residential Property 每個住宅物業	Floor 樓層	Unit 單位				
		A	B	C	D	E
Thickness of the floor slabs (excluding plaster)(mm) 樓板(不包括灰泥)的厚度(毫米)	18/F 18樓	135, 150, 165	135, 150, 325	135, 150, 325	135, 150, 165, 325	135, 150, 165, 325
Floor-to-floor height (mm) 層與層之間的高度(毫米)		2800, 3100, 3150	2900, 3100, 3150	2800, 2900, 3100, 3150	2900, 3100, 3150	2900, 3100, 3150
		F	H	J	K	L
Thickness of the floor slabs (excluding plaster)(mm) 樓板(不包括灰泥)的厚度(毫米)		135, 150, 165, 325	135, 150	135, 150, 325	135, 150, 325	135, 150, 165
Floor-to-floor height (mm) 層與層之間的高度(毫米)		2800, 2900, 3100, 3150	2800, 2900, 3100, 3150	2800, 3000, 3100, 3150	2800, 3000, 3100, 3150	2800, 3100, 3150

The internal areas of the residential properties on the upper floors will generally be slightly larger than those on the lower floors because of the reducing thickness of the structural walls on the upper floors.
 因住宅物業的較高樓層的結構牆的厚度遞減，較高樓層的內部面積，一般比較低樓層的內部面積稍大。

Notes :

1. Please refer to page 24 of this Sales Brochure for legend of the terms and abbreviations used on the floor above and the explanatory notes that are applicable thereto.
2. 4/F, 13/F and 14/F are omitted.

備註：

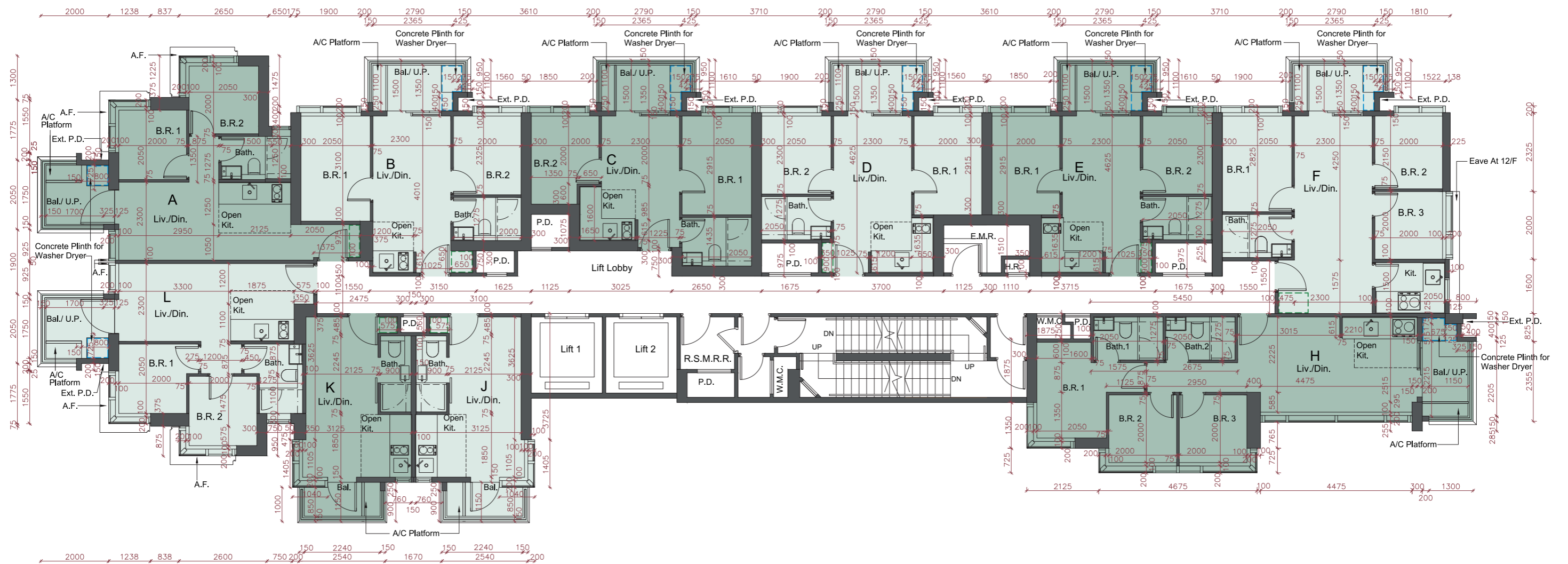
1. 樓面平面圖中所使用名詞及簡稱之圖例及其適用的備註，請參閱本售樓說明書第24頁。
2. 不設4樓、13樓及14樓。

FLOOR PLANS OF RESIDENTIAL PROPERTIES IN THE DEVELOPMENT

發展項目的住宅物業的樓面平面圖

19/F-21/F Floor Plan

19樓至21樓 樓面平面圖



Scale 比例: 0M(米) 5M(米)

Note : The dimensions of the floor plan are all structural dimensions in millimeter.
備註 : 平面圖所列之數字為以毫米標示之建築結構尺寸。

FLOOR PLANS OF RESIDENTIAL PROPERTIES IN THE DEVELOPMENT
發展項目的住宅物業的樓面平面圖

Each of the Residential Property 每個住宅物業	Floor 樓層	Unit 單位				
		A	B	C	D	E
Thickness of the floor slabs (excluding plaster)(mm) 樓板(不包括灰泥)的厚度(毫米)	19/F-20/F 19樓至20樓	135, 150, 165	135, 150, 325	135, 150, 325	135, 150, 165, 325	135, 150, 165, 325
Floor-to-floor height (mm) 層與層之間的高度(毫米)		2800, 3100, 3150	2900, 3100, 3150	2800, 2900, 3100, 3150	2900, 3100, 3150	2900, 3100, 3150
		F	H	J	K	L
Thickness of the floor slabs (excluding plaster)(mm) 樓板(不包括灰泥)的厚度(毫米)		135, 150, 165, 325	135, 150	135, 150, 325	135, 150, 325	135, 150, 165
Floor-to-floor height (mm) 層與層之間的高度(毫米)		2800, 2900, 3100, 3150	2800, 2900, 3100, 3150	2800, 3000, 3100, 3150	2800, 3000, 3100, 3150	2800, 3100, 3150

The internal areas of the residential properties on the upper floors will generally be slightly larger than those on the lower floors because of the reducing thickness of the structural walls on the upper floors.
 因住宅物業的較高樓層的結構牆的厚度遞減，較高樓層的內部面積，一般比較低樓層的內部面積稍大。

Notes :

1. Please refer to page 24 of this Sales Brochure for legend of the terms and abbreviations used on the floor above and the explanatory notes that are applicable thereto.
2. 4/F, 13/F and 14/F are omitted.

備註：

1. 樓面平面圖中所使用名詞及簡稱之圖例及其適用的備註，請參閱本售樓說明書第24頁。
2. 不設4樓、13樓及14樓。

FLOOR PLANS OF RESIDENTIAL PROPERTIES IN THE DEVELOPMENT
發展項目的住宅物業的樓面平面圖

Each of the Residential Property 每個住宅物業	Floor 樓層	Unit 單位				
		A	B	C	D	E
Thickness of the floor slabs (excluding plaster)(mm) 樓板(不包括灰泥)的厚度(毫米)	21/F 21樓	135, 150, 165	135, 150, 325	135, 150, 325	135, 150, 165, 325	135, 150, 165, 325
Floor-to-floor height (mm) 層與層之間的高度(毫米)		2800, 3100, 3150	2800, 2900, 3100, 3150	2800, 2900, 3100, 3150	2800, 2900, 3100, 3150	2800, 2900, 3150
		F	H	J	K	L
Thickness of the floor slabs (excluding plaster)(mm) 樓板(不包括灰泥)的厚度(毫米)		135, 150, 165, 325	135, 150	135, 150, 325	135, 150, 325	135, 150, 165
Floor-to-floor height (mm) 層與層之間的高度(毫米)		2900, 3150	2800, 3100, 3150	2800, 3000, 3100, 3150	2800, 3000, 3100, 3150	2800, 3100, 3150

The internal areas of the residential properties on the upper floors will generally be slightly larger than those on the lower floors because of the reducing thickness of the structural walls on the upper floors.
 因住宅物業的較高樓層的結構牆的厚度遞減，較高樓層的內部面積，一般比較低樓層的內部面積稍大。

Notes :

1. Please refer to page 24 of this Sales Brochure for legend of the terms and abbreviations used on the floor above and the explanatory notes that are applicable thereto.
2. 4/F, 13/F and 14/F are omitted.

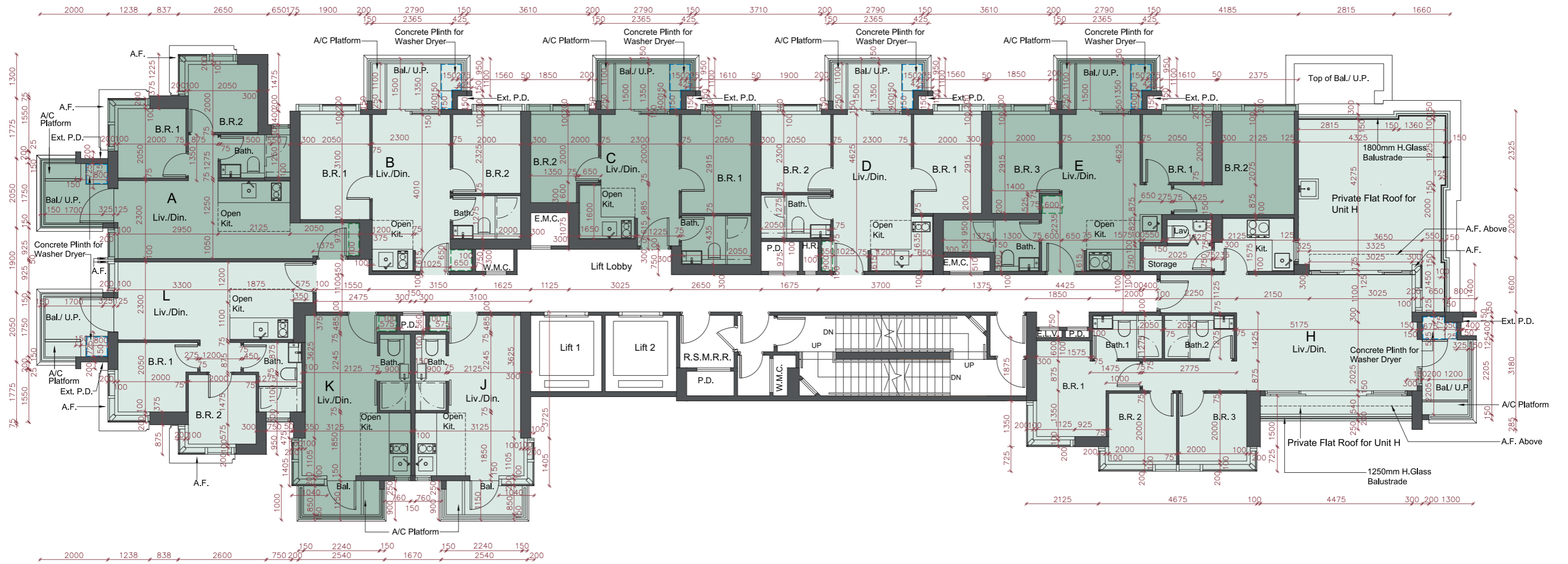
備註：

1. 樓面平面圖中所使用名詞及簡稱之圖例及其適用的備註，請參閱本售樓說明書第24頁。
2. 不設4樓、13樓及14樓。

FLOOR PLANS OF RESIDENTIAL PROPERTIES IN THE DEVELOPMENT

發展項目的住宅物業的樓面平面圖

22/F Floor Plan 22樓 樓面平面圖



Scale 比例: 0M(米) 5M(米)

Note : The dimensions of the floor plan are all structural dimensions in millimeter.
備註 : 平面圖所列之數字為以毫米標示之建築結構尺寸。

FLOOR PLANS OF RESIDENTIAL PROPERTIES IN THE DEVELOPMENT
發展項目的住宅物業的樓面平面圖

Each of the Residential Property 每個住宅物業	Floor 樓層	Unit 單位				
		A	B	C	D	E
Thickness of the floor slabs (excluding plaster)(mm) 樓板(不包括灰泥)的厚度(毫米)	22/F 22樓	135, 150, 165	135, 150, 325	135, 150, 325	135, 150, 165, 325	135, 150, 165, 325
Floor-to-floor height (mm) 層與層之間的高度(毫米)		2800, 3100, 3150	2800, 2900, 3100, 3150	2800, 2900, 3100, 3150	2800, 2900, 3100, 3150	2800, 2900, 3150
		H	J	K	L	
Thickness of the floor slabs (excluding plaster)(mm) 樓板(不包括灰泥)的厚度(毫米)		135, 150, 165	135, 150, 325	135, 150, 325	135, 150, 165	
Floor-to-floor height (mm) 層與層之間的高度(毫米)		2800, 2900, 3100, 3150	2800, 3000, 3100, 3150	2800, 3000, 3100, 3150	2800, 3100, 3150	

The internal areas of the residential properties on the upper floors will generally be slightly larger than those on the lower floors because of the reducing thickness of the structural walls on the upper floors.
 因住宅物業的較高樓層的結構牆的厚度遞減，較高樓層的內部面積，一般比較低樓層的內部面積稍大。

Notes :

1. Please refer to page 24 of this Sales Brochure for legend of the terms and abbreviations used on the floor plan and the explanatory notes that are applicable thereto.
2. 4/F, 13/F and 14/F are omitted.

備註：

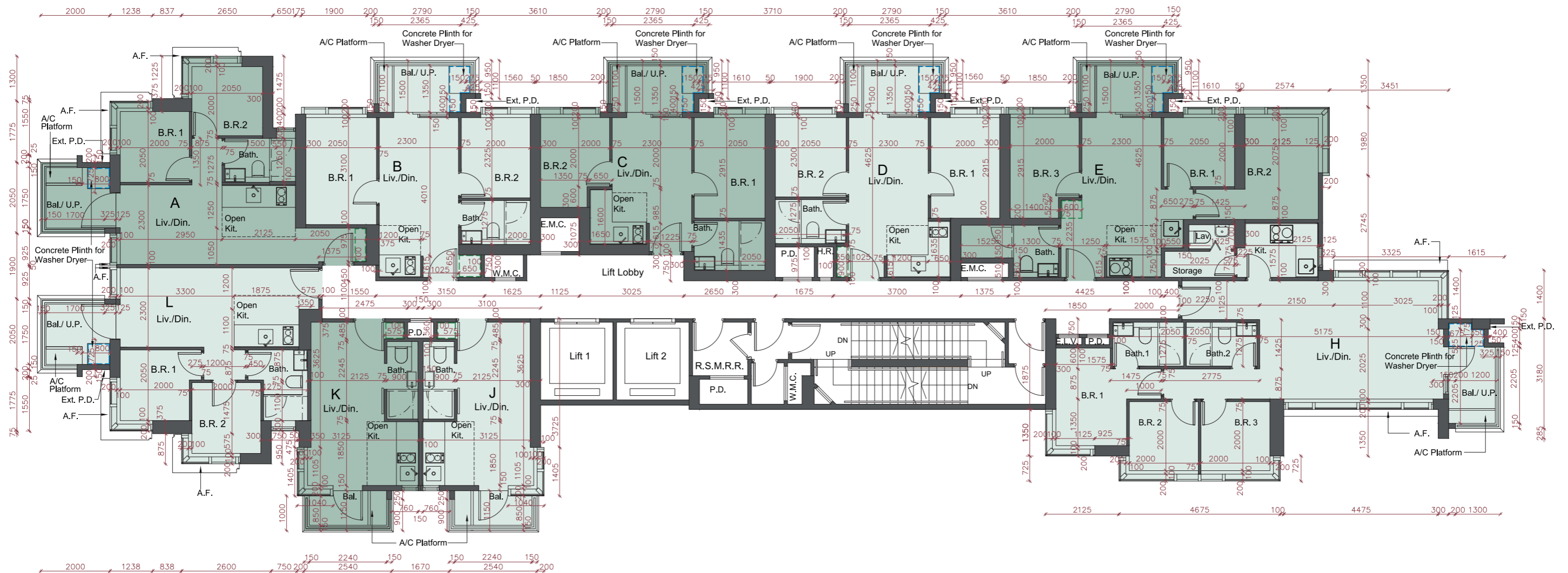
1. 樓面平面圖中所使用名詞及簡稱之圖例及其適用的備註，請參閱本售樓說明書第24頁。
2. 不設4樓、13樓及14樓。

FLOOR PLANS OF RESIDENTIAL PROPERTIES IN THE DEVELOPMENT

發展項目的住宅物業的樓面平面圖

23/F Floor Plan

23樓 樓面平面圖



Scale 比例: 0M(米) 5M(米)

Note : The dimensions of the floor plan are all structural dimensions in millimeter.
 備註 : 平面圖所列之數字為以毫米標示之建築結構尺寸。

FLOOR PLANS OF RESIDENTIAL PROPERTIES IN THE DEVELOPMENT
發展項目的住宅物業的樓面平面圖

Each of the Residential Property 每個住宅物業	Floor 樓層	Unit 單位				
		A	B	C	D	E
Thickness of the floor slabs (excluding plaster)(mm) 樓板(不包括灰泥)的厚度(毫米)	23/F 23樓	135, 150, 165	135, 150, 325	135, 150, 325	135, 150, 165, 325	135, 150, 165, 325
Floor-to-floor height (mm) 層與層之間的高度(毫米)		4000	4000	4000	4000	4000
		H	J	K	L	
Thickness of the floor slabs (excluding plaster)(mm) 樓板(不包括灰泥)的厚度(毫米)		135, 150, 165	135, 150	135, 150	135, 150, 165	
Floor-to-floor height (mm) 層與層之間的高度(毫米)		4000	4000	4000	4000	

The internal areas of the residential properties on the upper floors will generally be slightly larger than those on the lower floors because of the reducing thickness of the structural walls on the upper floors.
 因住宅物業的較高樓層的結構牆的厚度遞減，較高樓層的內部面積，一般比較低樓層的內部面積稍大。

Notes :

1. Please refer to page 24 of this Sales Brochure for legend of the terms and abbreviations used on the floor plan and the explanatory notes that are applicable thereto.
2. 4/F, 13/F and 14/F are omitted.

備註：

1. 樓面平面圖中所使用名詞及簡稱之圖例及其適用的備註，請參閱本售樓說明書第24頁。
2. 不設4樓、13樓及14樓。

FLOOR PLANS OF RESIDENTIAL PROPERTIES IN THE DEVELOPMENT
發展項目的住宅物業的樓面平面圖

Each of the Residential Property 每個住宅物業	Floor 樓層	Unit 單位				
		A	B	C	D	E
Thickness of the floor slabs (excluding plaster)(mm) 樓板(不包括灰泥)的厚度(毫米)	Roof 天台	Not Applicable 不適用				
Floor-to-floor height (mm) 層與層之間的高度(毫米)						
		F	G	H	J	K
Thickness of the floor slabs (excluding plaster)(mm) 樓板(不包括灰泥)的厚度(毫米)		Not Applicable 不適用				
Floor-to-floor height (mm) 層與層之間的高度(毫米)						

The internal areas of the residential properties on the upper floors will generally be slightly larger than those on the lower floors because of the reducing thickness of the structural walls on the upper floors.
 因住宅物業的較高樓層的結構牆的厚度遞減，較高樓層的內部面積，一般比較低樓層的內部面積稍大。

Note :
 Please refer to page 24 of this Sales Brochure for legend of the terms and abbreviations used on the floor plan and the explanatory notes that are applicable thereto.
 備註：
 樓面平面圖中所使用名詞及簡稱之圖例及其適用的備註，請參閱本售樓說明書第24頁。