

11 | FLOOR PLANS OF RESIDENTIAL PROPERTIES IN THE PHASE

期數的住宅物業的樓面平面圖

Legend of Terms and Abbreviations on Floor Plans:

樓面平面圖中的名稱及簡稱：

- There are architectural features, metal grilles and/or exposed pipes on the external walls of some of the floors. For details, please refer to the latest approved building plans and/or approved drainage plans and/or other relevant plans.
 - Common pipes exposed and/or enclosed in cladding are located at/adjacent to the balcony and/or utility platform and/or flat roof and/or roof and/or air-conditioner platform and/or external wall of some residential properties. For details, please refer to the latest approved building plans and/ or approved drainage plans and/or other relevant plans.
 - There are sunken slabs for drainage system and/or false ceiling/bulkheads for the air-conditioning fittings and/or mechanical and electrical services and/or drainage at some residential properties.
 - There are exposed pipes installed in some bathrooms and lavatories.
 - There are pipes enclosed by the fittings and finishes in some residential properties. For details, please refer to the latest approved drainage plans and/or other relevant plans.
 - There are non-structural prefabricated external walls in some residential properties. The Saleable Area as defined in the formal Agreement for Sale and Purchase of a residential property has included the non-structural prefabricated external walls and is measured from the exterior of such non-structural prefabricated external walls.
 - The ceiling height of some residential properties may vary due to structural, architectural and/or decoration design variations.
 - Symbols of fittings and fitments such as bath tub, sink, water closet, shower, sink counter, etc. in the floor plans are prepared based on the latest approved building plans, do not reflect the exact dimensions and are for general indication only.
- 部分樓層外牆範圍設有建築裝飾、金屬格柵及/或外露喉管，詳細資料請參考最新經批准的建築圖則及/或經批准的排水設施圖則及/或其他相關圖則。
 - 部分住宅物業的露台及/或工作平台及/或平台及/或天台及/或空調機平台及/或外牆上/附近設有外露及/或外牆覆蓋板內藏之公用喉管，詳細資料請參考最新經批准的建築圖則及/或經批准的排水設施圖則及/或其他相關圖則。
 - 部分住宅物業有用以安裝排水系統的跌級樓板及/或用以裝置空調裝備及/或其他機電設備及/或排水設施的假天花/裝飾橫樑。
 - 部分浴室及洗手間內裝有外露喉管。
 - 部分住宅物業於裝置及裝修物料內設有喉管。詳細資料請參考經批准的排水設施圖則及/或其他相關圖則。
 - 部分住宅物業有非結構預製外牆。正式買賣合約之實用面積之計算包括非結構預製外牆，並由非結構預製外牆之外圍起計。
 - 部分住宅物業之天花高度將可能會因應結構、建築設計及/或裝修設計上的需要有所差異。
 - 樓面平面圖上所顯示的裝置符號，如浴缸、洗滌盆、坐廁、花灑、洗滌盆櫃等乃按最新的經批准的建築圖則繪製，並不代表真實尺寸及只作一般示意用途。

ACOUSTIC DOOR (BAFFLE TYPE)
 ACOUSTIC WINDOW (BAFFLE TYPE)
 A.C. PLATFORM = AIR-CONDITIONER PLATFORM
 A.F. = ARCHITECTURAL FEATURES
 BAL. = BALCONY
 BATH = BATHROOM
 BATH 1 = BATHROOM 1
 BATH 2 = BATHROOM 2
 BATH 3 = BATHROOM 3
 BR 1 = BEDROOM 1
 BR 2 = BEDROOM 2
 BR 3 = BEDROOM 3
 C.D. = CABLE DUCT
 C.L. = CAT LADDER
 COMMON FLAT ROOF
 COMMON FLAT ROOF (ROOF OF TRANSFER PLATE)
 DOG HOUSE
 DOG HOUSE FOR PIPE VENT
 DN = DOWN
 ELV. = EXTRA LOW VOLTAGE ROOM
 E.M.C. = ELECTRIC METER CABINET
 E.M.R. = ELECTRIC METER ROOM
 FLAT ROOF
 F.H. = FIRE HYDRANT
 F.S.P.D. = FIRE SERVICES PIPE DUCT
 GREEN ROOF
 H.R. = HOSE REEL
 KIT = KITCHEN
 LAV = LAVATORY
 LIFT
 LIFT LOBBY
 LIFT OVERRUN
 LIV/DIN = LIVING ROOM / DINING ROOM
 MBR = MASTER BEDROOM
 M BATH = MASTER BATHROOM
 METAL PLATFORM
 O. KIT. = OPEN KITCHEN
 OPEN A.C. PLANT AREA = OPEN AIR-CONDITIONER PLANT AREA
 OPEN PIPE WELL
 OPEN PIPE WELL CORRIDOR
 P.D. = PIPE DUCT
 POTABLE WATER TANK AND PUMP ROOM
 POTABLE WATER TANK A
 POTABLE WATER TANK B
 PRIVATE FLAT ROOF
 REFUGE ROOF
 R.S.M.R.R. = REFUSE STORAGE AND MATERIAL RECOVERY ROOM
 STO. = STOREROOM
 TOP SLAB OF BAL., U.P. AND A.C. PLATFORM. =
 TOP SLAB OF BALCONY, UTILITY PLATFORM AND AIR-CONDITIONER PLATFORM
 TOWER 3B
 TOWER 5A
 TOWER 5B
 TRS = TEMPORARY REFUGE SPACE
 UP
 U.P. = UTILITY PLATFORM
 UTI = UTILITY ROOM
 W.M.C. = WATER METER CABINET

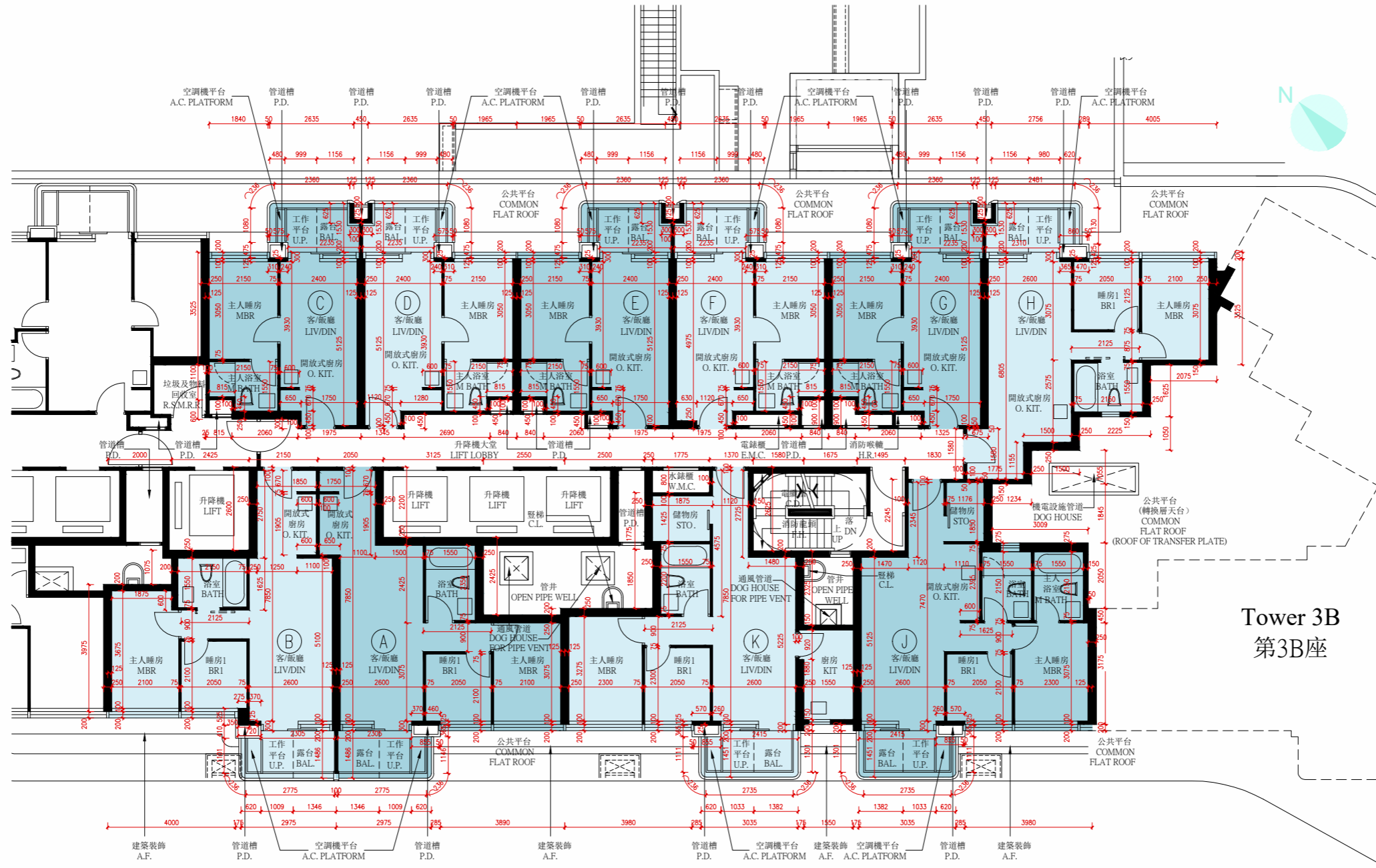
播音式減音門
 播音式減音窗
 空調機平台
 建築裝飾
 露台
 浴室
 浴室 1
 浴室 2
 浴室 3
 睡房 1
 睡房 2
 睡房 3
 電纜槽
 豎梯
 公共平台
 公共平台 (轉換層天台)
 機電設施管道
 通風管道
 落
 低電壓房
 電錶櫃
 電錶房
 平台
 消防龍頭
 消防管道槽
 綠化天台
 消防喉轆
 廚房
 洗手間
 升降機
 升降機大堂
 升降機槽頂部
 客/飯廳
 主人睡房
 主人浴室
 金屬平台
 開放式廚房
 戶外空調機位
 管井
 光井走廊
 管道槽
 食水缸及泵房
 食水缸 A
 食水缸 B
 私人平台
 避難天台
 垃圾及物料回收室
 儲物房
 露台、工作平台及空調機平台上蓋
 第3B座
 第5A座
 第5B座
 臨時庇護處
 上
 工作平台
 工作間
 水錶櫃

11 FLOOR PLANS OF RESIDENTIAL PROPERTIES IN THE PHASE

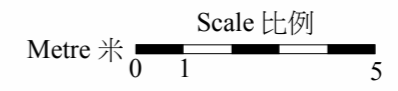
期數的住宅物業的樓面平面圖

TOWER 5A 第5A座 5/F 五樓

Tower 5B 第5B座



Tower 3B 第3B座



Notes 附註:

- (1) The dimensions on the floor plans are all in millimetre.
樓面平面圖所列之所有尺寸均以毫米標示。
- (2) Please refer to page 17 of this sales brochure for legend of the terms and abbreviations shown on the floor plans.
平面圖中顯示之名詞及簡稱請參閱本售樓說明書第17頁。

11 | FLOOR PLANS OF RESIDENTIAL PROPERTIES IN THE PHASE

期數的住宅物業的樓面平面圖

The thickness of the floor slabs (excluding plaster) and floor-to-floor height of each residential property of the Phase as provided in the approved building plans are:
 按期數的經批准的建築圖則所規定，期數每個住宅單位的樓板(不包括灰泥)的厚度及層與層之間的高度為：

Tower 大廈	Floor 樓層	Unit 單位	The thickness of the floor slabs (excluding plaster) of the residential property (mm) 住宅物業的樓板(不包括灰泥)的厚度(毫米)	The floor-to-floor height (refers to the height between the top surface of the structural slab of a floor and the top surface of the structural slab of its immediate upper floor) of the residential property (m) 住宅物業的層與層之間的高度 (指該樓層之石屎地台面與上一層石屎地台面之高度距離)(米)
Tower 5A 第5A座	5/F 五樓	A	2600	3.350*, 3.450*, 3.700*
		B	2600	3.350*, 3.450*, 3.700*
		C	2600	3.350*, 3.450*, 3.625 [^] , 3.700*
		D	2600	3.350*, 3.450*, 3.625 [^] , 3.700*
		E	2600	3.350*, 3.450*, 3.625 [^] , 3.700*
		F	2600	3.350*, 3.450*, 3.625 [^] , 3.700*
		G	2600	3.350*, 3.450*, 3.625 [^] , 3.700*
		H	2600	3.350*, 3.400*, 3.450*, 3.700*
		J	2600	3.350*, 3.450*, 3.625 [^] , 3.700*
		K	2600	3.350*, 3.450*, 3.700*

The internal areas of the residential properties on the upper floors will generally be slightly larger than those on the lower floors because of the reducing thickness of the structural walls on the upper floors.
 因住宅物業的較高樓層的結構牆的厚度遞減，較高樓層的內部面積，一般比較低樓層的內部面積稍大。

* Inclusive of the depth of mass concrete fill on the floor of this floor (550 mm)

包括本層地台樓板之無鋼筋混凝土填料深度(550 毫米)

[^] Inclusive of the depth of mass concrete fill on the floor of this floor (475 mm)

包括本層地台樓板之無鋼筋混凝土填料深度(475 毫米)

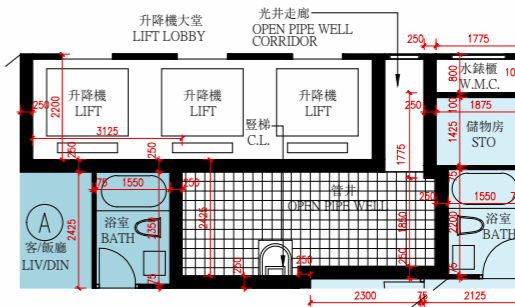
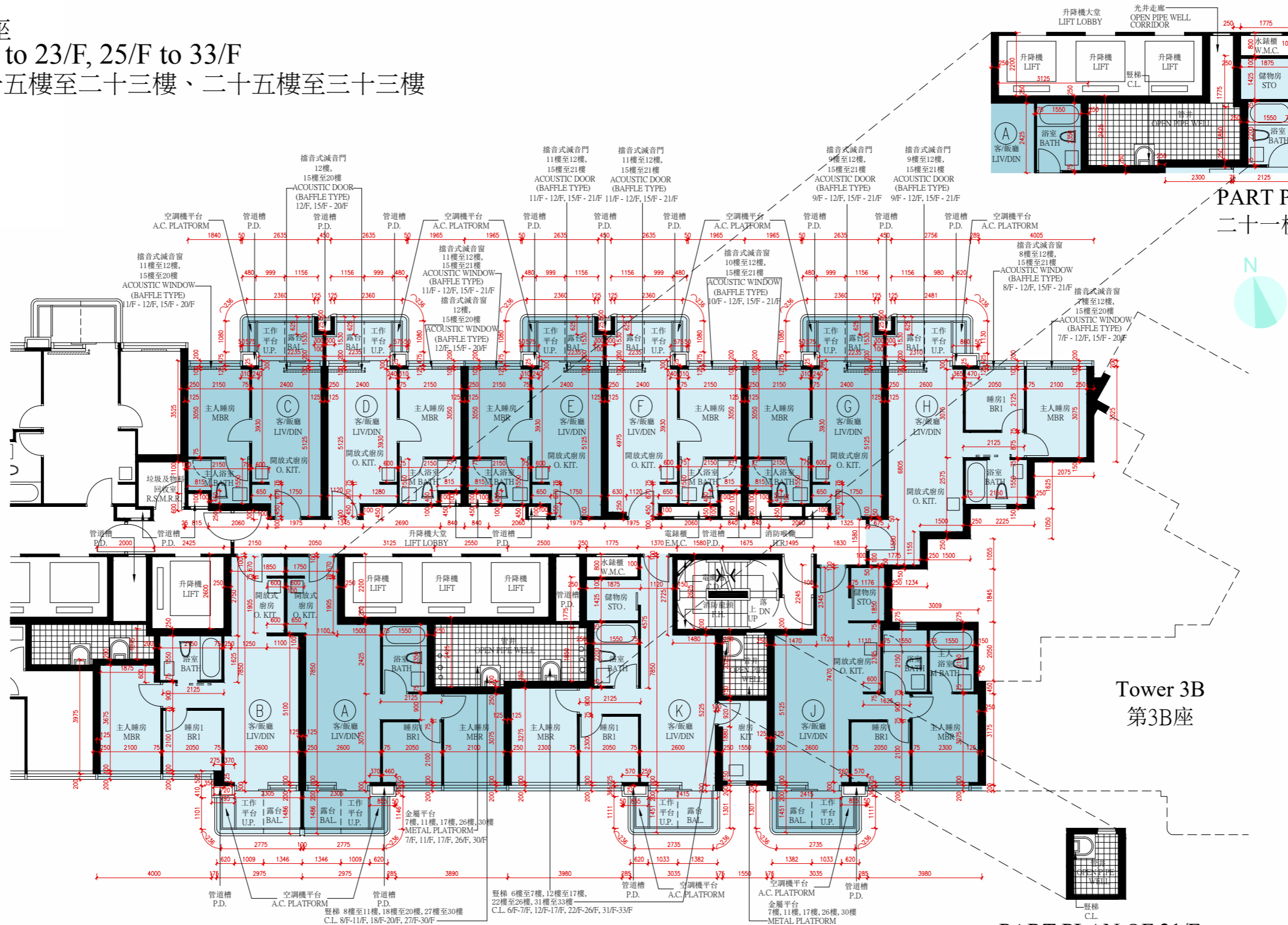
11 FLOOR PLANS OF RESIDENTIAL PROPERTIES IN THE PHASE

期數的住宅物業的樓面平面圖

Tower 5A 第5A座
6/F to 12/F, 15/F to 23/F, 25/F to 33/F
六樓至十二樓、十五樓至二十三樓、二十五樓至三十三樓

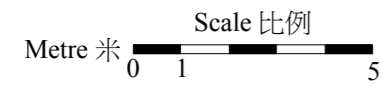
Tower 5B 第5B座

Tower 3B 第3B座



PART PLAN OF 21/F
二十樓部分平面圖

PART PLAN OF 21/F
二十樓部分平面圖



- Notes 附註:
- (1) The dimensions on the floor plans are all in millimetre.
樓面平面圖所列之所有尺寸均以毫米標示。
 - (2) Please refer to page 17 of this sales brochure for legend of the terms and abbreviations shown on the floor plans.
平面圖中顯示之名詞及簡稱請參閱本售樓說明書第17頁。

11 | FLOOR PLANS OF RESIDENTIAL PROPERTIES IN THE PHASE 期數的住宅物業的樓面平面圖

The thickness of the floor slabs (excluding plaster) and floor-to-floor height of each residential property of the Phase as provided in the approved building plans are:
按期數的經批准的建築圖則所規定，期數每個住宅單位的樓板(不包括灰泥)的厚度及層與層之間的高度為：

Tower 大廈	Floor 樓層	Unit 單位	The thickness of the floor slabs (excluding plaster) of the residential property (mm) 住宅物業的樓板(不包括灰泥)的厚度(毫米)	The floor-to-floor height (refers to the height between the top surface of the structural slab of a floor and the top surface of the structural slab of its immediate upper floor) of the residential property (m) 住宅物業的層與層之間的高度 (指該樓層之石屎地台面與上一層石屎地台面之高度距離)(米)
Tower 5A 第5A座	6/F to 12/F, 15/F to 23/F, 25/F to 33/F 六樓至十二樓、 十五樓至二十三樓、 二十五樓至三十三樓	A	150	3.150
		B	150	3.150
		C	150	3.150
		D	150	3.150
		E	150	3.150
		F	150	3.150
		G	150	3.150
		H	150	3.150
		J	150	3.150
		K	150	3.150

The internal areas of the residential properties on the upper floors will generally be slightly larger than those on the lower floors because of the reducing thickness of the structural walls on the upper floors.
因住宅物業的較高樓層的結構牆的厚度遞減，較高樓層的內部面積，一般比較低樓層的內部面積稍大。

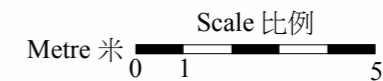
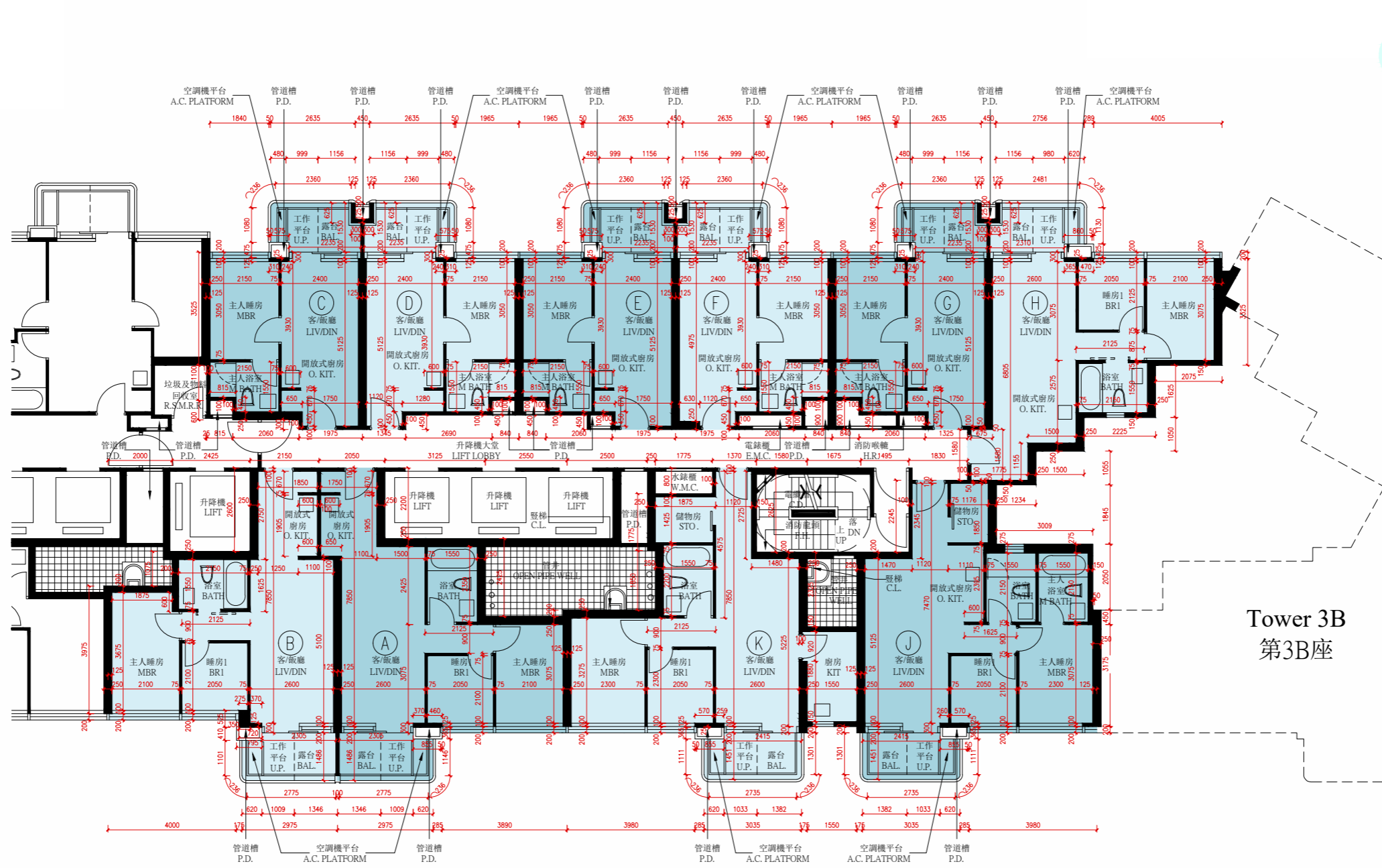
11 FLOOR PLANS OF RESIDENTIAL PROPERTIES IN THE PHASE

期數的住宅物業的樓面平面圖

Tower 5A 第5A座
35/F 三十五樓

Tower 5B 第5B座

Tower 3B 第3B座



Notes 附註:

- (1) The dimensions on the floor plans are all in millimetre.
樓面平面圖所列之所有尺寸均以毫米標示。
- (2) Please refer to page 17 of this sales brochure for legend of the terms and abbreviations shown on the floor plans.
平面圖中顯示之名詞及簡稱請參閱本售樓說明書第17頁。

11 | FLOOR PLANS OF RESIDENTIAL PROPERTIES IN THE PHASE

期數的住宅物業的樓面平面圖

The thickness of the floor slabs (excluding plaster) and floor-to-floor height of each residential property of the Phase as provided in the approved building plans are:
 按期數的經批准的建築圖則所規定，期數每個住宅單位的樓板(不包括灰泥)的厚度及層與層之間的高度為：

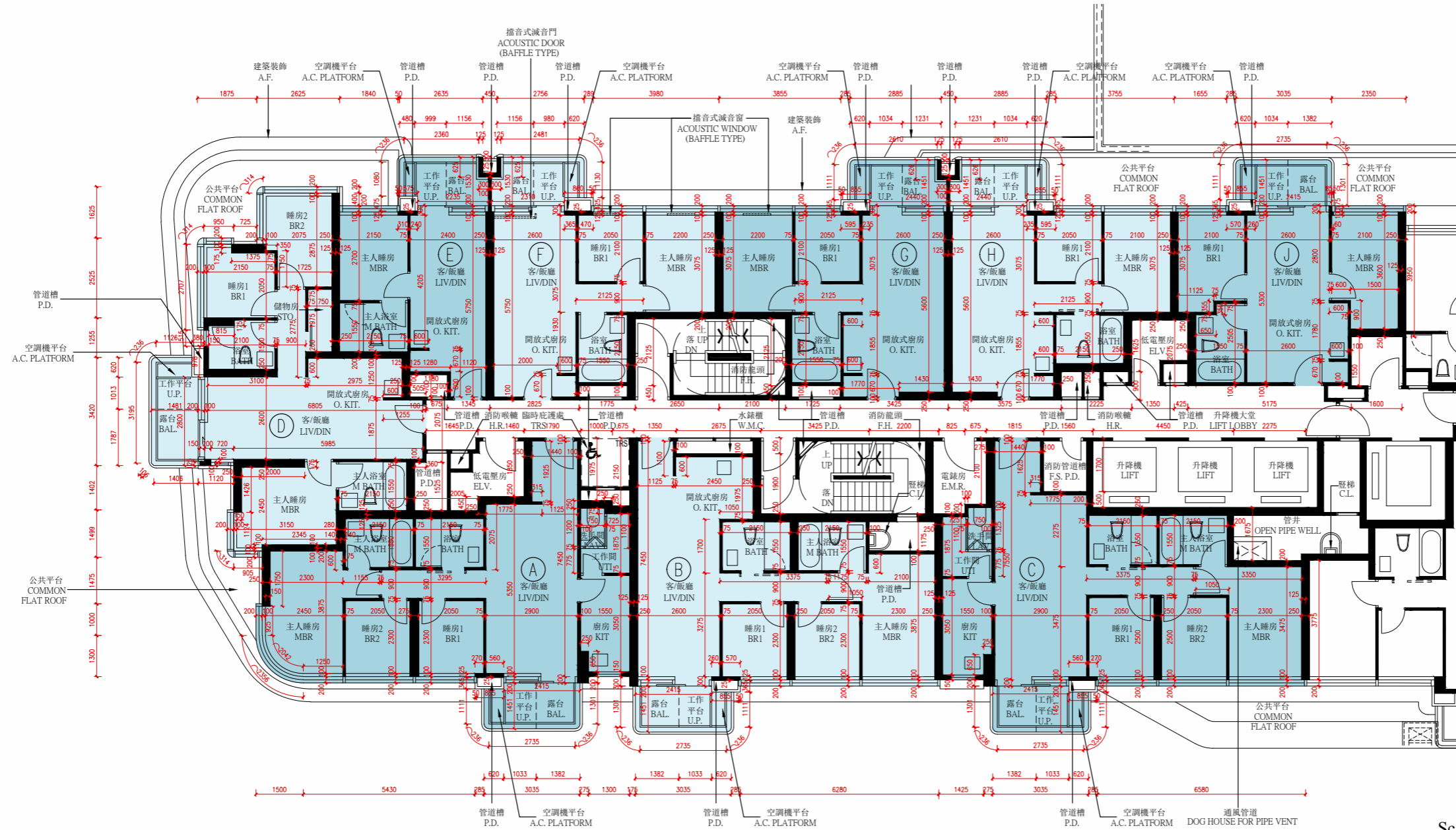
Tower 大廈	Floor 樓層	Unit 單位	The thickness of the floor slabs (excluding plaster) of the residential property (mm) 住宅物業的樓板(不包括灰泥)的厚度(毫米)	The floor-to-floor height (refers to the height between the top surface of the structural slab of a floor and the top surface of the structural slab of its immediate upper floor) of the residential property (m) 住宅物業的層與層之間的高度 (指該樓層之石屎地台面與上一層石屎地台面之高度距離)(米)
Tower 5A 第5A座	35/F 三十五樓	A	150	3.650, 3.900, 4.000
		B	150	3.650, 3.900, 4.000
		C	150	3.650, 3.725, 3.900, 4.000
		D	150	3.650, 3.725, 3.900, 4.000
		E	150	3.650, 3.725, 3.900, 4.000
		F	150	3.650, 3.725, 3.900, 4.000
		G	150	3.650, 3.725, 3.900, 4.000
		H	150	3.650, 3.900, 3.950, 4.000
		J	150	3.650, 3.725, 3.900, 4.000
		K	150	3.650, 3.900, 4.000

The internal areas of the residential properties on the upper floors will generally be slightly larger than those on the lower floors because of the reducing thickness of the structural walls on the upper floors.
 因住宅物業的較高樓層的結構牆的厚度遞減，較高樓層的內部面積，一般比較低樓層的內部面積稍大。

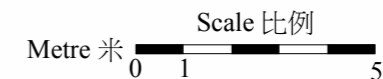
11 FLOOR PLANS OF RESIDENTIAL PROPERTIES IN THE PHASE

期數的住宅物業的樓面平面圖

TOWER 5B 第5B座
5/F 五樓



Tower 5A
第5A座



Notes 附註:

- (1) The dimensions on the floor plans are all in millimetre.
樓面平面圖所列之所有尺寸均以毫米標示。
- (2) Please refer to page 17 of this sales brochure for legend of the terms and abbreviations shown on the floor plans.
平面圖中顯示之名詞及簡稱請參閱本售樓說明書第17頁。

11 FLOOR PLANS OF RESIDENTIAL PROPERTIES IN THE PHASE

期數的住宅物業的樓面平面圖

The thickness of the floor slabs (excluding plaster) and floor-to-floor height of each residential property of the Phase as provided in the approved building plans are:
按期數的經批准的建築圖則所規定，期數每個住宅單位的樓板(不包括灰泥)的厚度及層與層之間的高度為：

Tower 大廈	Floor 樓層	Unit 單位	The thickness of the floor slabs (excluding plaster) of the residential property (mm) 住宅物業的樓板(不包括灰泥)的厚度(毫米)	The floor-to-floor height (refers to the height between the top surface of the structural slab of a floor and the top surface of the structural slab of its immediate upper floor) of the residential property (m) 住宅物業的層與層之間的高度 (指該樓層之石屎地台面與上一層石屎地台面之高度距離)(米)
Tower 5B 第5B座	5/F 五樓	A	2600	3.350*, 3.450*, 3.625 [^] , 3.700*
		B	2600	3.300*, 3.350*, 3.450*, 3.625 [^] , 3.700*
		C	2600	3.300*, 3.350*, 3.450*, 3.625 [^] , 3.700*
		D	2600	3.300*, 3.350*, 3.625 [^] , 3.700*
		E	2600	3.350*, 3.450*, 3.625 [^] , 3.700*
		F	2600	3.350*, 3.450*, 3.700*
		G	2600	3.350*, 3.450*, 3.700*
		H	2600	3.350*, 3.700*
		J	2600	3.350*, 3.450*, 3.700*

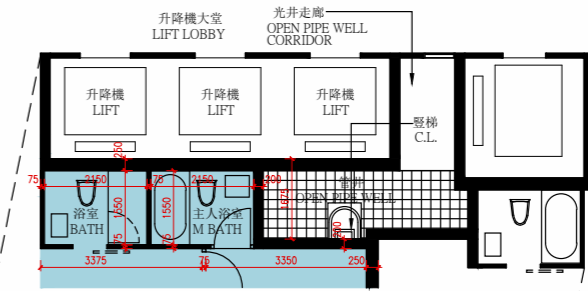
The internal areas of the residential properties on the upper floors will generally be slightly larger than those on the lower floors because of the reducing thickness of the structural walls on the upper floors.
因住宅物業的較高樓層的結構牆的厚度遞減，較高樓層的內部面積，一般比較低樓層的內部面積稍大。

- * Inclusive of the depth of mass concrete fill on the floor of this floor (550 mm)
包括本層地台樓板之無鋼筋混凝土填料深度(550 毫米)
- [^] Inclusive of the depth of mass concrete fill on the floor of this floor (475 mm)
包括本層地台樓板之無鋼筋混凝土填料深度(475 毫米)

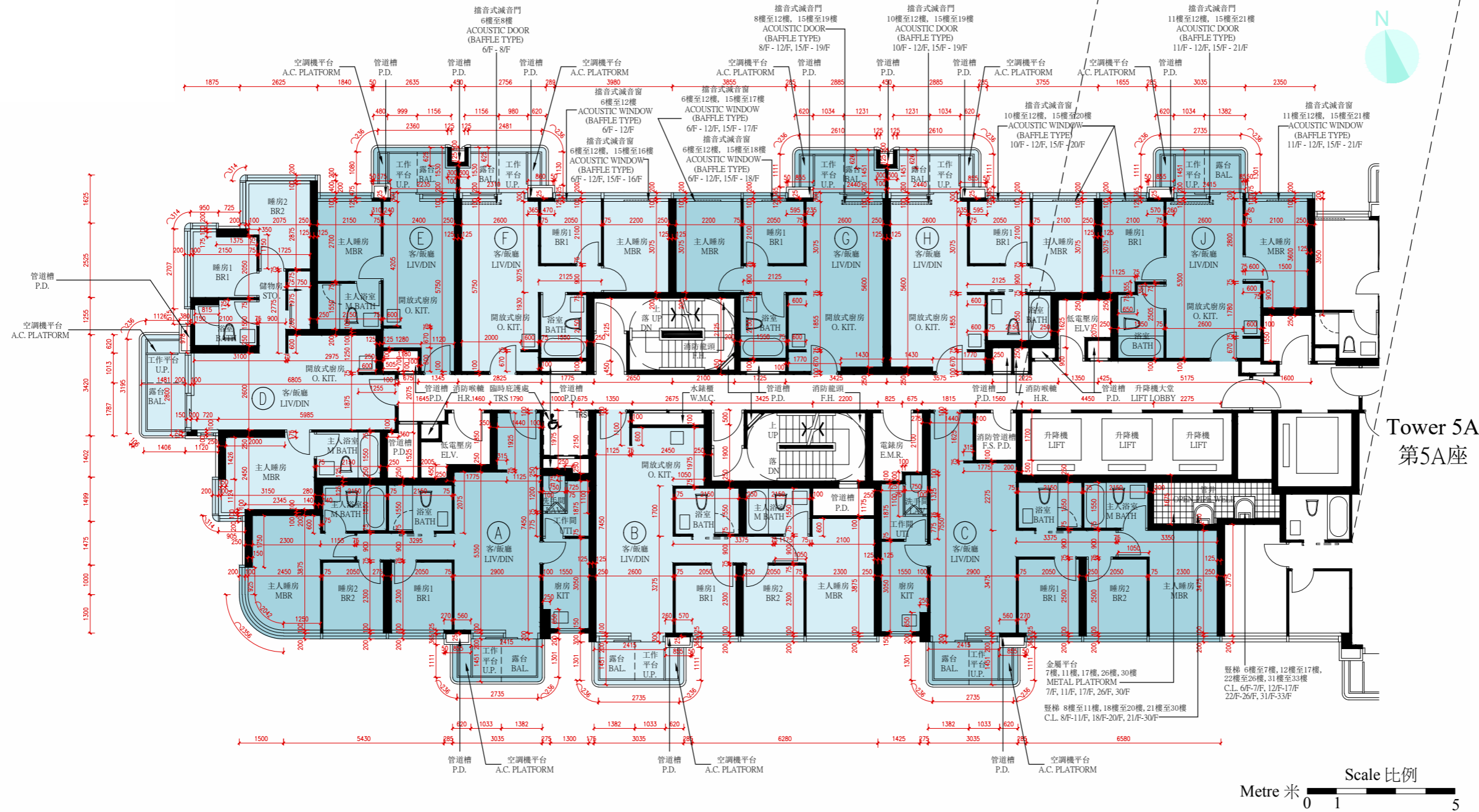
11 FLOOR PLANS OF RESIDENTIAL PROPERTIES IN THE PHASE

期數的住宅物業的樓面平面圖

Tower 5B 第5B座
 6/F to 12/F, 15/F to 23/F, 25/F to 33/F
 六樓至十二樓、十五樓至二十三樓、二十五樓至三十三樓



PART PLAN OF 21/F
 二十一樓部分平面圖



Notes 附註:

- (1) The dimensions on the floor plans are all in millimetre.
樓面平面圖所列之所有尺寸均以毫米標示。
- (2) Please refer to page 17 of this sales brochure for legend of the terms and abbreviations shown on the floor plans.
平面圖中顯示之名詞及簡稱請參閱本售樓說明書第17頁。

11 FLOOR PLANS OF RESIDENTIAL PROPERTIES IN THE PHASE

期數的住宅物業的樓面平面圖

The thickness of the floor slabs (excluding plaster) and floor-to-floor height of each residential property of the Phase as provided in the approved building plans are:
 按期數的經批准的建築圖則所規定，期數每個住宅單位的樓板(不包括灰泥)的厚度及層與層之間的高度為：

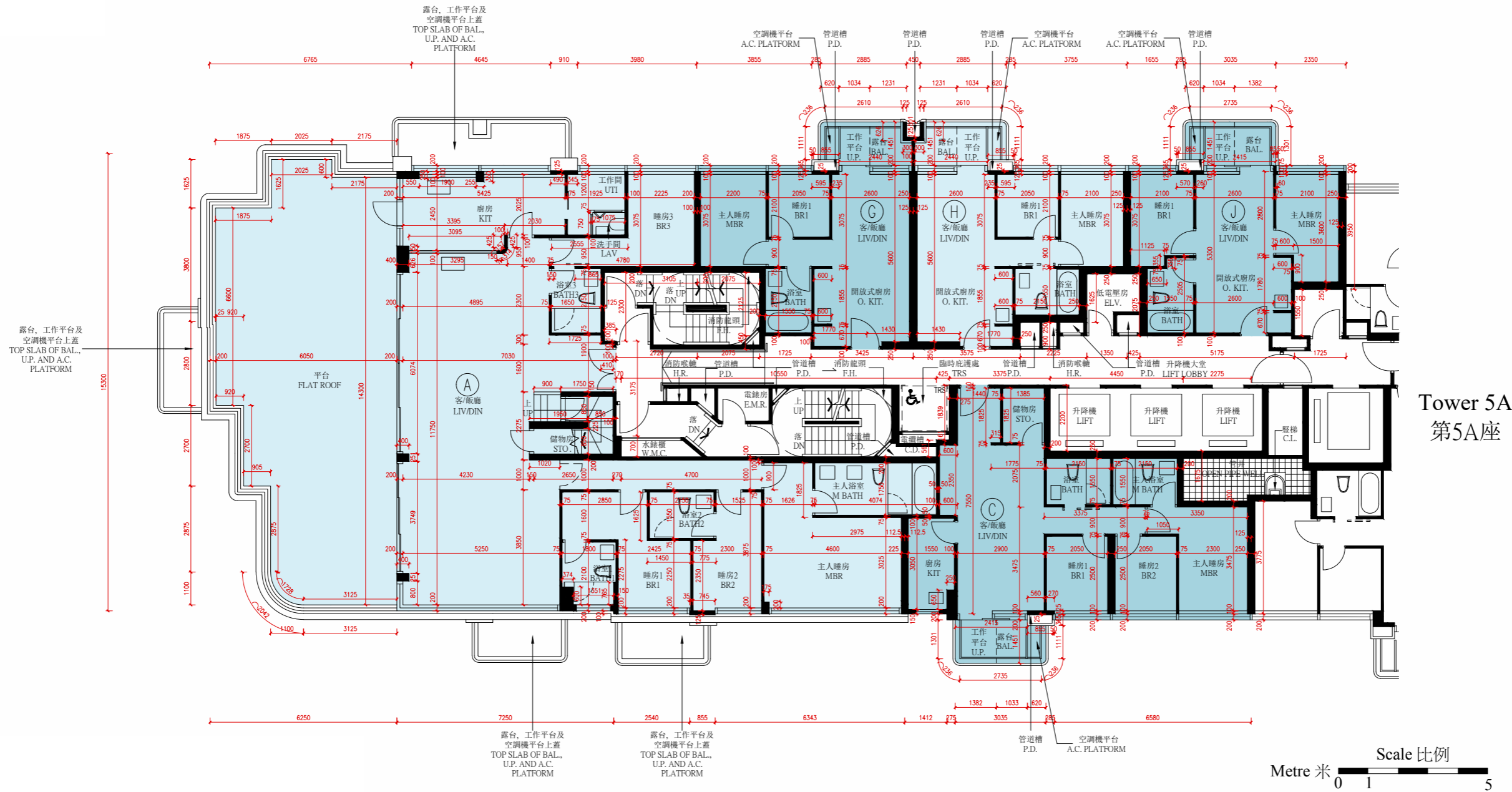
Tower 大廈	Floor 樓層	Unit 單位	The thickness of the floor slabs (excluding plaster) of the residential property (mm) 住宅物業的樓板(不包括灰泥)的厚度(毫米)	The floor-to-floor height (refers to the height between the top surface of the structural slab of a floor and the top surface of the structural slab of its immediate upper floor) of the residential property (m) 住宅物業的層與層之間的高度 (指該樓層之石屎地台面與上一層石屎地台面之高度距離)(米)
Tower 5B 第5B座	6/F to 12/F, 15/F to 23/F, 25/F to 32/F 六樓至十二樓、 十五樓至二十三樓、 二十五樓至三十二樓	A	150	3.150
		B	150	3.150
		C	150	3.150
		D	150	3.150
		E	150	3.150
		F	150	3.150
		G	150	3.150
		H	150	3.150
		J	150	3.150
	33/F 三十三樓	A	150	3.15, 3.400, 3.450, 3.500, 3.575, 3.750, 3.850
		B	150	3.100, 3.150, 3.500, 3.575, 3.750, 3.850, 3.900
		C	150	2.900, 3.150, 3.400, 3.450, 3.500, 3.850
		D	150	3.150, 3.225, 3.500, 3.550
		E	150	3.150, 3.225, 3.250, 3.500, 3.750
		F	150	3.100, 3.150, 3.200, 3.250, 3.500, 3.750, 3.850
		G	150	3.150
		H	150	3.150
		J	150	3.150

The internal areas of the residential properties on the upper floors will generally be slightly larger than those on the lower floors because of the reducing thickness of the structural walls on the upper floors.
 因住宅物業的較高樓層的結構牆的厚度遞減，較高樓層的內部面積，一般比較低樓層的內部面積稍大。

11 FLOOR PLANS OF RESIDENTIAL PROPERTIES IN THE PHASE

期數的住宅物業的樓面平面圖

Tower 5B 第5B座
35/F 三十五樓



Tower 5A
第5A座

Notes 附註:

- (1) The dimensions on the floor plans are all in millimetre.
樓面平面圖所列之所有尺寸均以毫米標示。
- (2) Please refer to page 17 of this sales brochure for legend of the terms and abbreviations shown on the floor plans.
平面圖中顯示之名詞及簡稱請參閱本售樓說明書第17頁。

11 | FLOOR PLANS OF RESIDENTIAL PROPERTIES IN THE PHASE 期數的住宅物業的樓面平面圖

The thickness of the floor slabs (excluding plaster) and floor-to-floor height of each residential property of the Phase as provided in the approved building plans are:
按期數的經批准的建築圖則所規定，期數每個住宅單位的樓板(不包括灰泥)的厚度及層與層之間的高度為：

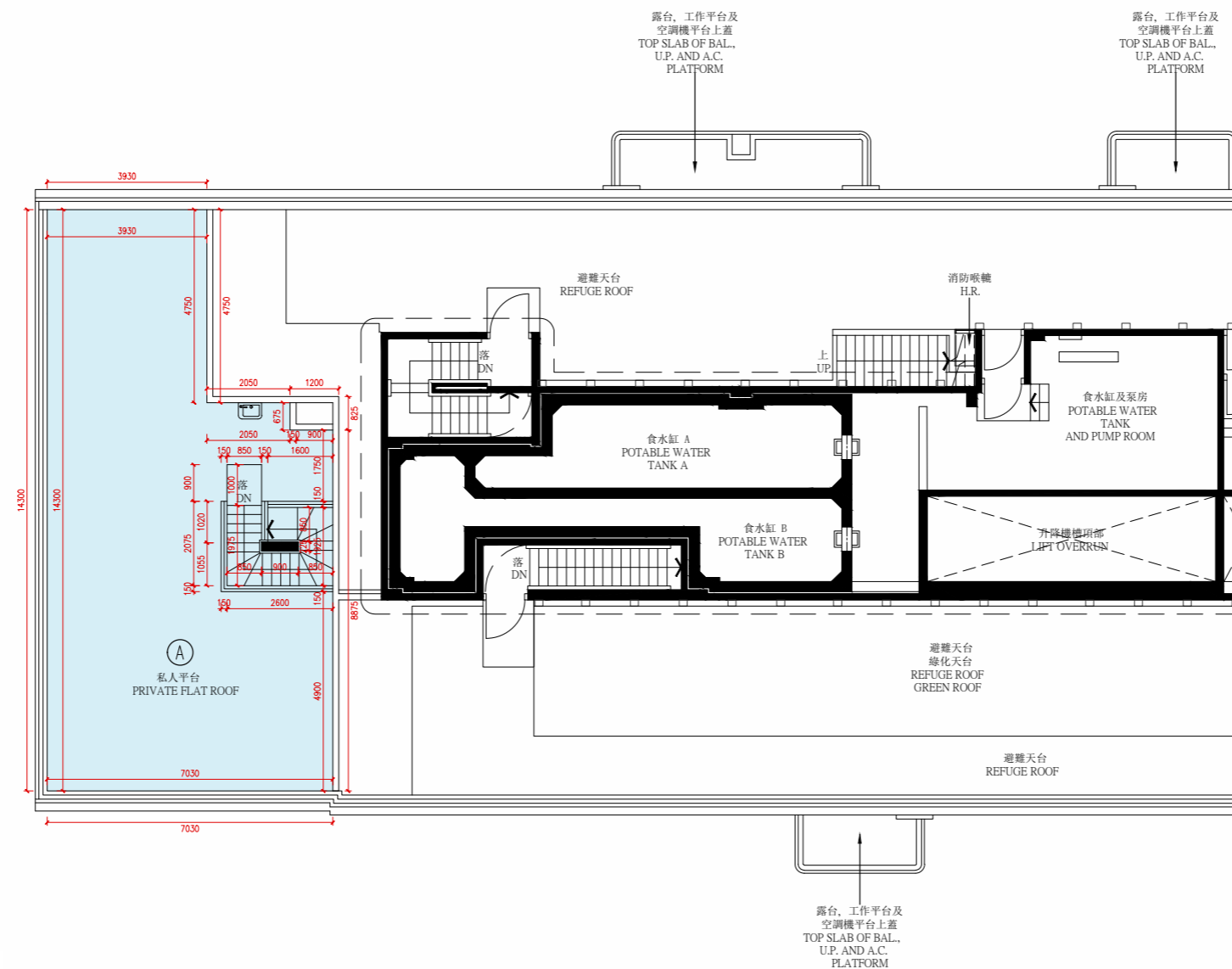
Tower 大廈	Floor 樓層	Unit 單位	The thickness of the floor slabs (excluding plaster) of the residential property (mm) 住宅物業的樓板(不包括灰泥)的厚度(毫米)	The floor-to-floor height (refers to the height between the top surface of the structural slab of a floor and the top surface of the structural slab of its immediate upper floor) of the residential property (m) 住宅物業的層與層之間的高度 (指該樓層之石屎地台面與上一層石屎地台面之高度距離)(米)
Tower 5B 第5B座	35/F 三十五樓	A	150	3.300, 3.375, 3.550, 3.600, 3.650, 3.700
		C	150	3.650, 3.725, 3.900, 4.000, 4.050
		G	150	3.650, 3.900, 4.000
		H	150	3.650, 4.000
		J	150	3.650, 3.900, 4.000

The internal areas of the residential properties on the upper floors will generally be slightly larger than those on the lower floors because of the reducing thickness of the structural walls on the upper floors.
因住宅物業的較高樓層的結構牆的厚度遞減，較高樓層的內部面積，一般比較低樓層的內部面積稍大。

11 FLOOR PLANS OF RESIDENTIAL PROPERTIES IN THE PHASE

期數的住宅物業的樓面平面圖

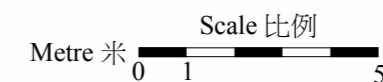
Tower 5B 第5B座 Roof 天台



Tower 5A 第5A座

Notes 附註:

- (1) The dimensions on the floor plans are all in millimetre.
樓面平面圖所列之所有尺寸均以毫米標示。
- (2) Please refer to page 17 of this sales brochure for legend of the terms and abbreviations shown on the floor plans.
平面圖中顯示之名詞及簡稱請參閱本售樓說明書第17頁。
- (3) The description of "Private Flat Roof" as shown on the floor plan corresponds to the description in the latest Approved Building Plans of the Phase but such Private Flat Roof is de facto Roof in actual use. In this connection, such Private Flat Roof has been respectively counted as part of the "Roof" specified in Part 1 of Schedule 2 of the Residential Properties (First-hand Sales) Ordinance (Cap.621) ("the Ordinance") of Unit A on 35/F of Tower 5B in compliance with section 8(1)(c) and section 11(2)(b) in Part 1 of Schedule 1 of the Ordinance.
樓面平面圖上顯示為「私人平台」之描述，跟期數最新版本之批准的建築圖則上所描述的一致，惟這樣的私人平台實質上的真正用途為天台。因此，這樣的私人平台已根據《一手住宅物業銷售條例》(第621章) (「該條例」) 的附表2第1部份，已分別地被計入為第5B座35樓A單位所指明的「天台」，已遵從該條例的第8(1)(c)條及附表1第1部份第11(2)(b)條。



11 | FLOOR PLANS OF RESIDENTIAL PROPERTIES IN THE PHASE

期數的住宅物業的樓面平面圖

The thickness of the floor slabs (excluding plaster) and floor-to-floor height of each residential property of the Phase as provided in the approved building plans are:
 按期數的經批准的建築圖則所規定，期數每個住宅單位的樓板(不包括灰泥)的厚度及層與層之間的高度為：

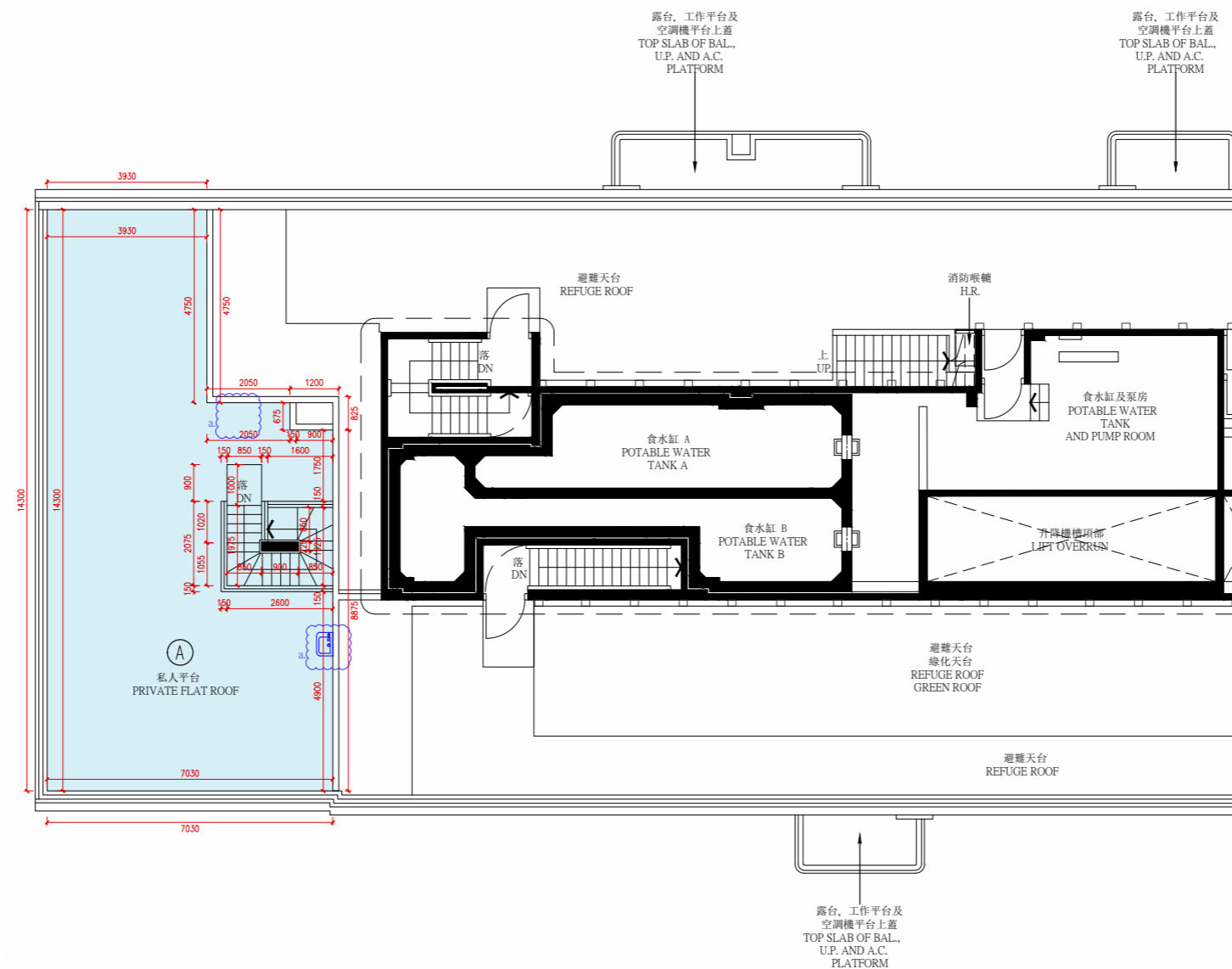
Tower 大廈	Floor 樓層	Unit 單位	The thickness of the floor slabs (excluding plaster) of the residential property (mm) 住宅物業的樓板(不包括灰泥)的厚度(毫米)	The floor-to-floor height (refers to the height between the top surface of the structural slab of a floor and the top surface of the structural slab of its immediate upper floor) of the residential property (m) 住宅物業的層與層之間的高度 (指該樓層之石屎地台面與上一層石屎地台面之高度距離)(米)
Tower 5B 第5B座	Roof 天台	A	Not Applicable 不適用	Not Applicable 不適用

The internal areas of the residential properties on the upper floors will generally be slightly larger than those on the lower floors because of the reducing thickness of the structural walls on the upper floors.
 因住宅物業的較高樓層的結構牆的厚度遞減，較高樓層的內部面積，一般比較低樓層的內部面積稍大。

11 | FLOOR PLANS OF RESIDENTIAL PROPERTIES IN THE PHASE

期數的住宅物業的樓面平面圖

Tower 5B 第5B座 Roof (As-is Floor Plan) 天台(現狀樓面平面圖)



Tower 5A
第5A座

Notes 附註:

- (1) The dimensions on the floor plans are all in millimetre.
樓面平面圖所列之所有尺寸均以毫米標示。
- (2) Please refer to page 17 of this sales brochure for legend of the terms and abbreviations shown on the floor plans.
平面圖中顯示之名詞及簡稱請參閱本售樓說明書第17頁。
- (3) The description of "Private Flat Roof" as shown on the floor plan corresponds to the description in the latest Approved Building Plans of the Phase but such Private Flat Roof is de facto Roof in actual use. In this connection, such Private Flat Roof has been respectively counted as part of the "Roof" specified in Part 1 of Schedule 2 of the Residential Properties (First-hand Sales) Ordinance (Cap.621) ("the Ordinance") of Unit A on 35/F of Tower 5B in compliance with section 8(1)(c) and section 11(2)(b) in Part 1 of Schedule 1 of the Ordinance.
樓面平面圖上顯示為「私人平台」之描述，跟期數最新版本之批准的建築圖則上所描述的一致，惟這樣的私人平台實質上的真正用途為天台。因此，這樣的私人平台已根據《一手住宅物業銷售條例》(第621章) (「該條例」) 的附表2第1部份，已分別地被計入為第5B座35樓A單位所指明的「天台」，已遵從該條例的第8(1)(c)條及附表1第1部份第11(2)(b)條。

11 | FLOOR PLANS OF RESIDENTIAL PROPERTIES IN THE PHASE 期數的住宅物業的樓面平面圖

Private Flat Roof of Unit A on 35/F of Tower 5B has been altered by way of exempted works or classified as minor works under the Buildings Ordinance (Cap.123) after completion of the Development. The approximate location of the alteration is indicated on the as-is floor plan and the detail of the alteration is set out below (the below numbering refers to the marked alteration on the plan):

- a. Blue solid line represents the wash basin installed after modification.

第5B座35樓A單位私人平台在發展項目落成後經獲《建築物條例》(第123章)豁免工程或小型工程改動。該等改動的大約位置於現狀樓面平面圖中標出。該等改動詳情列出如下(下文編號對應圖中改動編號)：

- a. 藍色實綫所示為經改動後之洗手盆。