

# 11 FLOOR PLANS OF RESIDENTIAL PROPERTIES IN THE PHASE 期數的住宅物業的樓面平面圖

## GLOSSARY 詞彙表

ACCESS DOOR = 檢修門

ACCESS DOOR AT 8/F, 12/F, 18/F AND 22/F = 檢修門於8樓、12樓、18樓及22樓

ACCESS DOOR AT 22/F = 檢修門於22樓

A.C.P. = Air-conditioner Platform = 冷氣機平台

ACOUSTIC DOOR (BAFFLE TYPE) = 減音門 (擋音式)

ACOUSTIC DOOR (BAFFLE TYPE) AT 7/F = 減音門 (擋音式) 設於7樓

ACOUSTIC DOOR (BAFFLE TYPE) AT 7/F TO 20/F = 減音門 (擋音式) 設於7樓至20樓

ACOUSTIC WINDOW (BAFFLE TYPE) = 減音窗

ACOUSTIC WINDOW (BAFFLE TYPE) AT 7/F TO 10/F = 減音窗 (擋音式) 設於7樓至10樓

ACOUSTIC WINDOW (BAFFLE TYPE) AT 7/F TO 11/F = 減音窗 (擋音式) 設於7樓至11樓

ACOUSTIC WINDOW (BAFFLE TYPE) AT 7/F TO 18/F = 減音窗 (擋音式) 設於7樓至18樓

ACOUSTIC WINDOW (BAFFLE TYPE) AT 7/F TO 19/F = 減音窗 (擋音式) 設於7樓至19樓

ACOUSTIC WINDOW (BAFFLE TYPE) AT 7/F TO 26/F = 減音窗 (擋音式) 設於7樓至26樓

A.F. = Architectural Feature = 建築裝飾

ARCH. FEATURE ABOVE = Architectural Feature Above = 上層建築裝飾

ALUM. CLAD. = Aluminium Cladding = 鋁質蓋板

ALUM. CLAD. AT L/L & H/L = Aluminium Cladding at Low Level and High Level = 鋁質蓋板於低位及高位

A.R.D. = Air Release Duct = 減壓風喉槽

BATH = Bathroom = 浴室

BAL = Balcony = 露台

BAL & U.P. ABOVE = Balcony and Utility Platform Above = 上層露台及工作平台

B.R.1 = Bedroom 1 = 睡房1

B.R.2 = Bedroom 2 = 睡房2

COMMON FLAT ROOF = 公用平台

COMMON ROOF (REFUGE FLOOR) = 公用天台 (庇護層)

COVERED WALKWAY = 有蓋人行道

DN = Down = 落

E.A.D. = Exhaust Air Duct = 排風管

E.L. = ELEC. DUCT = Electric Duct = 電線槽

ELV. = Extra Low Voltage = 特低壓電線

E.L.V. DUCT (T1) = 特低電壓管道槽

E.L.V. ROOM = 特低電壓房

EL ROOM = ELECT. RM. = Electric Room = 電線房

E.M.C. = Electric Meter Cabinet = 電錶箱

E.M.R. = Electric Meter Room = 電錶房

FAN RM.1A (RSMRR) = Fan Room 1A (Refuse Storage and Material Recovery Room) = 風機房1A (垃圾及物料回收房)

FAN RM.1B (RSMRR) = Fan Room 1B (Refuse Storage and Material Recovery Room) = 風機房1B (垃圾及物料回收房)

F.H. = Fire Hydrant = 消防栓

FIXED WINDOW WITH MAINTENANCE WINDOW = 設有維修窗的固定窗

FIXED WINDOW WITH MAINTENANCE WINDOW AT 7/F = 設有維修窗的固定窗設於7樓

FLUSHING WATER TANK = 沖廁水水缸

FLUSHING WATER PUMP RM.1A = Flushing Water Pump Room 1A = 沖廁水水缸房1A

GLASS CLADDING = 玻璃蓋板

HORIZONTAL A.F. = Horizontal Architectural Feature = 橫向建築裝飾

HORIZONTAL A.F. AT 2/F TO 15/F = Horizontal Architectural Feature at 2/F to 15/F = 橫向建築裝飾設於2樓至15樓

HORIZONTAL A.F. AT 2/F TO 17/F = Horizontal Architectural Feature at 2/F to 17/F = 橫向建築裝飾設於2樓至17樓

HORIZONTAL A.F. AT 7/F TO 15/F = Horizontal Architectural Feature at 7/F to 15/F = 橫向建築裝飾設於7樓至15樓

HORIZONTAL A.F. AT 7/F TO 25/F = Horizontal Architectural Feature at 7/F to 25/F = 橫向建築裝飾設於7樓至25樓

HORIZONTAL A.F. AT 9/F TO 25/F = Horizontal Architectural Feature at 9/F to 25/F = 橫向建築裝飾設於9樓至25樓

HORIZONTAL A.F. AT 9/F TO 27/F = Horizontal Architectural Feature at 9/F to 27/F = 橫向建築裝飾設於9樓至27樓

HORIZONTAL A.F. AT 16/F TO 29/F = Horizontal Architectural Feature at 16/F to 29/F = 橫向建築裝飾設於16樓至29樓

HORIZONTAL A.F. AT 21/F TO 29/F = Horizontal Architectural Feature at 21/F to 29/F = 橫向建築裝飾設於21樓至29樓

HORIZONTAL A.F. AT 21/F TO 35/F & H/L OF 35/F = Horizontal Architectural Feature at 21/F to 35/F and High Level of 35/F = 橫向建築裝飾設於21樓至35樓及35樓的高位

HR = Hose Reel = 消防喉轆

INACCESSIBLE GREEN ROOF = 無法到達之綠化天台

INACCESSIBLE ROOF = 無法到達之天台

KIT = Kitchen = 廚房

LAV = Lavatory = 洗手間

LIV / DIN = Living and Dinning Room = 客飯廳

LIFT = 升降機

LIFT LOBBY = 升降機大堂

LIFT OVERRUN = 升降機槽頂部

LIFT SHAFT = 升降機槽

METAL CLADDING = 金屬鋁板

M.BATH = Master Bathroom = 主人浴室

M.B.R. = Master Bedroom = 主人睡房

O.KIT = Open Kitchen = 開放式廚房

PRIVATE FLAT ROOF = 私人平台

PRIVATE ROOF (FOR TOWER 1A 35/F FLAT A) = 第1A座35樓A單位之私人天台

PRIVATE ROOF (FOR TOWER 1B 35/F FLAT A) = 第1B座35樓A單位之私人天台

POTABLE WATER TANK = 食水泵水缸

POTABLE WATER PUMP RM.1A = Potable Water Pump Room 1A = 食水泵水缸房1A

POTABLE WATER PUMP RM.1B = Potable Water Pump Room 1B = 食水泵水缸房1B

P.W. = PIPE WELL = 管井

PD = PIPE DUCT = 管道槽

P.D.(FS) = Pipe Duct (Fire Service) = 管道槽 (消防)

RECREATIONAL FACILITY = RECREATIONAL FACILITIES = 康樂設施

R.S.M.R.R. = Refuse Storage and Material Recovery Room = 垃圾及物料回收房

STO = Store = 儲物室

TBE ROOM (FOR T1) = Telecommunications and Broadcasting Room = 電訊及廣播設備機房

TRANSFER PLATE = 轉換層

TRAP DOOR = 活門

TRAP DOOR ABOVE = 在上活門

TOP OF BAL & U.P. = Top of Balcony and Utility Platform and Air-conditioner Platform = 露台及工作平台及冷氣機平台頂部

TOWER 1A = 第1A座

TOWER 1B = 第1B座

TOWER 1C = 第1C座

U.P. = Utility Platform = 工作平台

UP = 上

UPPER PART OF TRANSFORMER RM. 1B = 1B座的電力變壓房上半部份

UPPER PART OF MAIN SWITCH RM. 1B = 1B座的總掣房上半部份

UTI = Utility = 工作間

WALK IN CLOSET = 步入式衣帽間

W.M.C. = Water Meter Cabinet = 水錶箱

## Remarks applicable to the floor plans of this section:

1. The dimensions of the floors plans are all structural dimensions in millimetres.
2. Balcony, Utility Platform and Air-conditioner Platform are Non-enclosed Areas.
3. There may be architectural features and/or exposed pipes on external walls of some of the floors. For details, please refer to the latest approved general building plans and other relevant plans.
4. Common drain pipes enclosed in cladding are located adjacent to Balcony, Utility Platform and Air-conditioner Platform of some residential properties.
5. There may be conduits for air-conditioning, other conduits and/or Mechanical & Electrical services concealed by ceiling bulkheads or false ceilings in a residential property.
6. There are non-structural prefabricated external walls in the residential properties. The Saleable Area as defined in the formal agreement for sale and purchase of a residential property has included the non-structural prefabricated external walls and is measured from the exterior of such non-structural prefabricated external walls.
7. The indications of fittings such as sinks, toilet bowls, bathtubs, wash basins etc. show on the floor plan are indications of their approximate locations only and not indications of their actual size, designs and shapes.

## 適用於本節各樓面平面圖之備註：

1. 樓面平面圖之尺寸所列數字為以毫米標示之建築結構尺寸。
2. 露台、工作平台及冷氣機平台為不可封閉之地方。
3. 部份樓層外牆範圍設有建築裝飾及/或外露喉管，詳細資料請參考最後批准之總建築圖則及其他相關圖則。
4. 部份住宅物業的露台、工作平台及冷氣機平台側外牆裝飾板內藏公用去水渠。
5. 住宅物業內裝飾橫樑或假天花內可能藏有冷氣喉管、其他喉管及/或機電設備。
6. 單位有非結構預製外牆。買賣合約之實用面積之計算包括非結構預製外牆，並由非結構預製外牆之外圍起計。
7. 平面圖所示之裝置如洗滌盤、坐廁、浴缸、面盆等只供展示其大約位置而非展示實際大小、設計及形狀。

# 11 FLOOR PLANS OF RESIDENTIAL PROPERTIES IN THE PHASE 期數的住宅物業的樓面平面圖

	Tower 座數	Floor 樓層	Flat 單位												
			A	B	C	D	E	F	G	H	J	K	L	M	N
The thickness of the floor slabs (excluding plaster) of each residential property (mm) 每個住宅物業的樓板(不包括灰泥)的厚度(毫米)	Tower 1A 第1A座	1/F 1樓	125, 150	125, 150, 175	125, 150	125, 150	125, 150	125, 150, 175	125, 150	125, 150	125, 150	125, 150	125, 150	125, 150	125, 150
The floor-to-floor height (refers to the height between the top surface of the structural slab of a floor and the top surface of the structural slab of its immediate upper floor) of each residential property (mm) 每個住宅物業的層與層之間的高度(指該樓層之石屎地台面與上一層石屎地台面之高度距離)(毫米)			3150, 3350*, 3400*, 3450*, 3650*, 3700*, 3750*	3150, 3350*, 3375*, 3400*, 3450*, 3700*, 3750*	3400*, 3450*, 3575*, 3700*, 3750*	3150, 3400*, 3450*, 3700*, 3750*	3150, 3400*, 3450*, 3700*, 3750*	3150, 3400*, 3500*, 3700*, 3750*	3150, 3400*, 3450*, 3700*, 3750*	3150, 3400*, 3450*, 3700*, 3750*	3150, 3400*, 3450*, 3700*, 3750*	3150, 3400*, 3450*, 3700*, 3750*	3150, 3400*, 3500*, 3700*, 3750*	3150, 3400*, 3400*, 3450*, 3750*	3150, 3350*, 3400*, 3450*, 3750*

\* Inclusive of the thickness of filling on sunken slab.

\* 包括跌級樓板上之填充層厚度。

The internal areas of the residential properties on the upper floors will generally be slightly larger than those on the lower floors because of the reducing thickness of the structural walls on the upper floors. (Note: This statement required in Section 10(2)(e) in Part 1 of Schedule 1 of the Residential Properties (First-hand Sales) Ordinance (Cap.621) is not applicable to the Phase)

因住宅物業的較高樓層的結構牆的厚度遞減，較高樓層的內部面積，一般比較低樓層的內部面積稍大。(註：此乃根據《一手住宅物業銷售條例》(第621章)附表1第1部第10(2)(e)條所規定的陳述並不適用於期數)

Note:

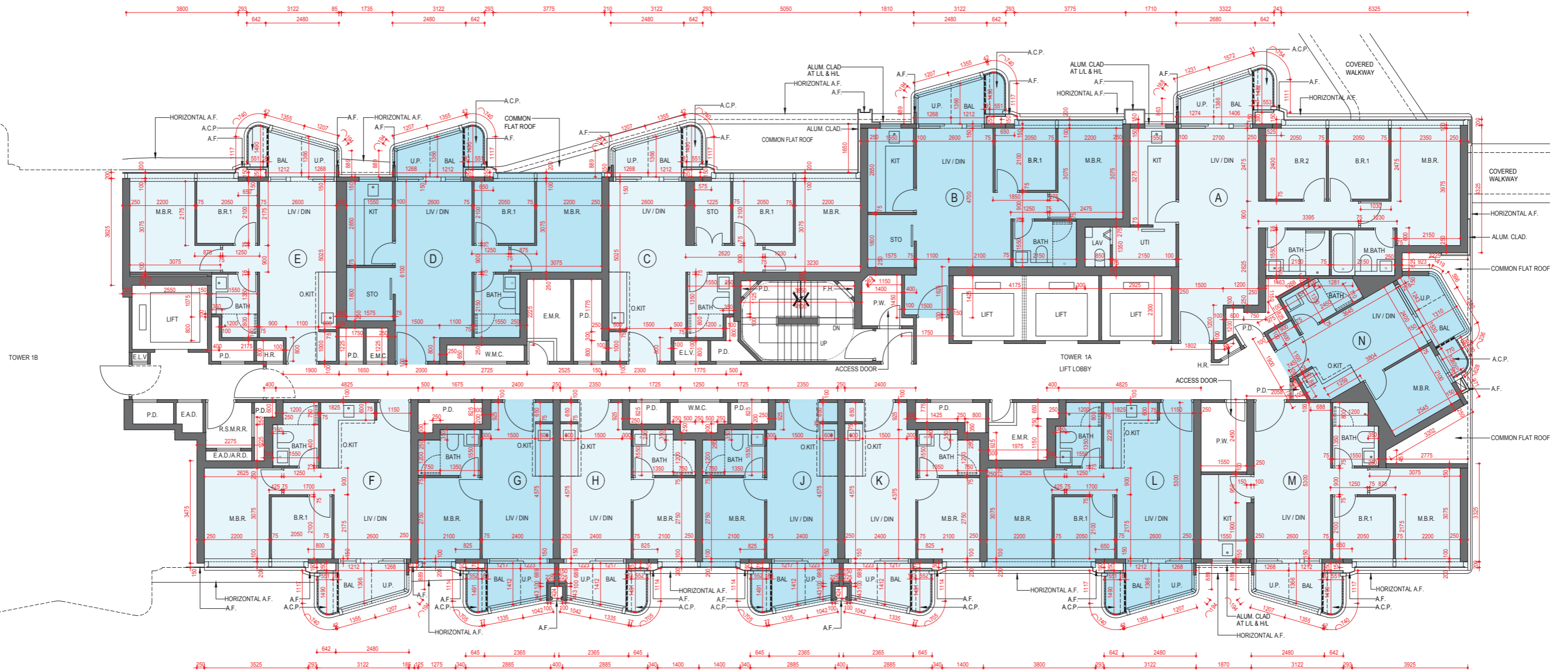
4/F, 13/F, 14/F, 24/F and 34/F are omitted.

註：

不設4樓、13樓、14樓、24樓及34樓。

TOWER 第 1A 座

1/F Floor Plan 樓平面圖



Scale 比例 0 1 2 3 4 5m(米)

# 11 FLOOR PLANS OF RESIDENTIAL PROPERTIES IN THE PHASE 期數的住宅物業的樓面平面圖

	Tower 座數	Floor 樓層	Flat 單位														
			A	B	C	D	E	F	G	H	J	K	L	M	N		
The thickness of the floor slabs (excluding plaster) of each residential property (mm) 每個住宅物業的樓板 (不包括灰泥) 的厚度 (毫米)	Tower 1A 第1A座	2/F- 31/F 2樓至31樓	125, 150	125, 150, 175	125, 150	125, 150	125, 150	125, 150, 175	125, 150	125, 150	125, 150	125, 150	125, 150	125, 150	125, 150	125, 150	
		32/F- 33/F 32樓至33樓	125, 150	125, 150, 175	125, 150	125, 150	125, 150	125, 150	125, 150, 175	125, 150	125, 150	125, 150	125, 150	125, 150	125, 150	125, 150	125, 150
		35/F 35樓	125, 150	125, 150	125, 150	125, 150	125, 150	125, 150	125, 150	125, 150	125, 150	125, 150	125, 150	125, 150	125, 150	125, 150	125, 150
The floor-to-floor height (refers to the height between the top surface of the structural slab of a floor and the top surface of the structural slab of its immediate upper floor) of each residential property (mm) 每個住宅物業的層與層之間的高度 (指該樓層之石屎地台面與上一層石屎地台面之高度距離)(毫米)		2/F- 31/F 2樓至31樓	3150, 3150*	3150, 3150*	3150, 3150*	3150, 3150*	3150, 3150*	3150, 3150*	3150, 3150*	3150, 3150*	3150, 3150*	3150, 3150*	3150, 3150*	3150, 3150*	3150, 3150*	3150, 3150*	3150, 3150*
		32/F- 33/F 32樓至33樓	3500, 3500*	3500, 3500*	3500, 3500*	3500, 3500*	3500, 3500*	3500, 3500*	3500, 3500*	3500, 3500*	3500, 3500*	3500, 3500*	3500, 3500*	3500, 3500*	3500, 3500*	3500, 3500*	3500, 3500*
		35/F 35樓	3975, 4000, 4050*, 4100*, 4300*, 4350*, 4400*	3975, 4000, 4050*, 4300*, 4350*, 4375*, 4400*	3975, 4000, 4050*, 4300*, 4350*	3975, 4000, 4050*, 4300*, 4350*	3975, 4000, 4050*, 4300*, 4350*	3975, 4000, 4050*, 4250*, 4350*	3975, 4000, 4050*, 4300*, 4350*	3975, 4000, 4050*, 4300*, 4350*	3975, 4000, 4050*, 4300*, 4350*	3975, 4000, 4050*, 4300*, 4350*	3975, 4000, 4050*, 4250*, 4350*	3975, 4000, 4300*, 4350*, 4400*	3975, 4000, 4050*, 4300*, 4350*	3975, 4000, 4350*	3975, 4000, 4350*

\* Inclusive of the thickness of filling on sunken slab.

\* 包括跌級樓板上之填充層厚度。

The internal areas of the residential properties on the upper floors will generally be slightly larger than those on the lower floors because of the reducing thickness of the structural walls on the upper floors. (Note: This statement required in Section 10(2)(e) in Part 1 of Schedule 1 of the Residential Properties (First-hand Sales) Ordinance (Cap.621) is not applicable to the Phase)

因住宅物業的較高樓層的結構牆的厚度遞減，較高樓層的內部面積，一般比較低樓層的內部面積稍大。(註：此乃根據《一手住宅物業銷售條例》(第621章)附表1第1部第10(2)(e)條所規定的陳述並不適用於期數)

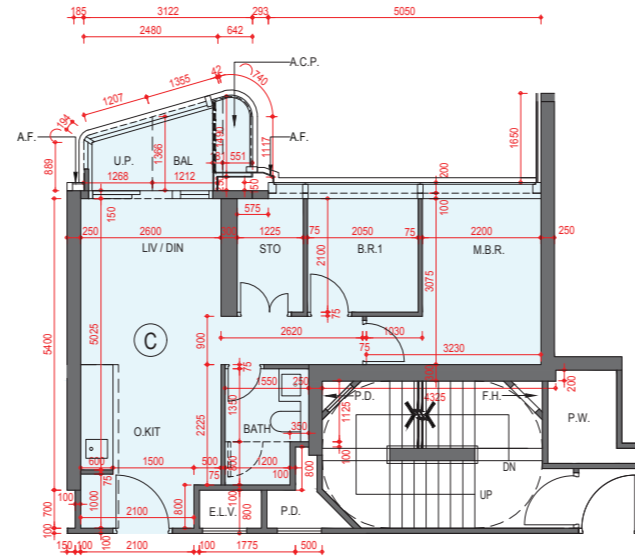
Note:

4/F, 13/F, 14/F, 24/F and 34/F are omitted.

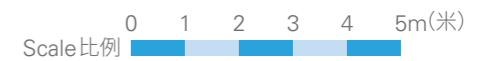
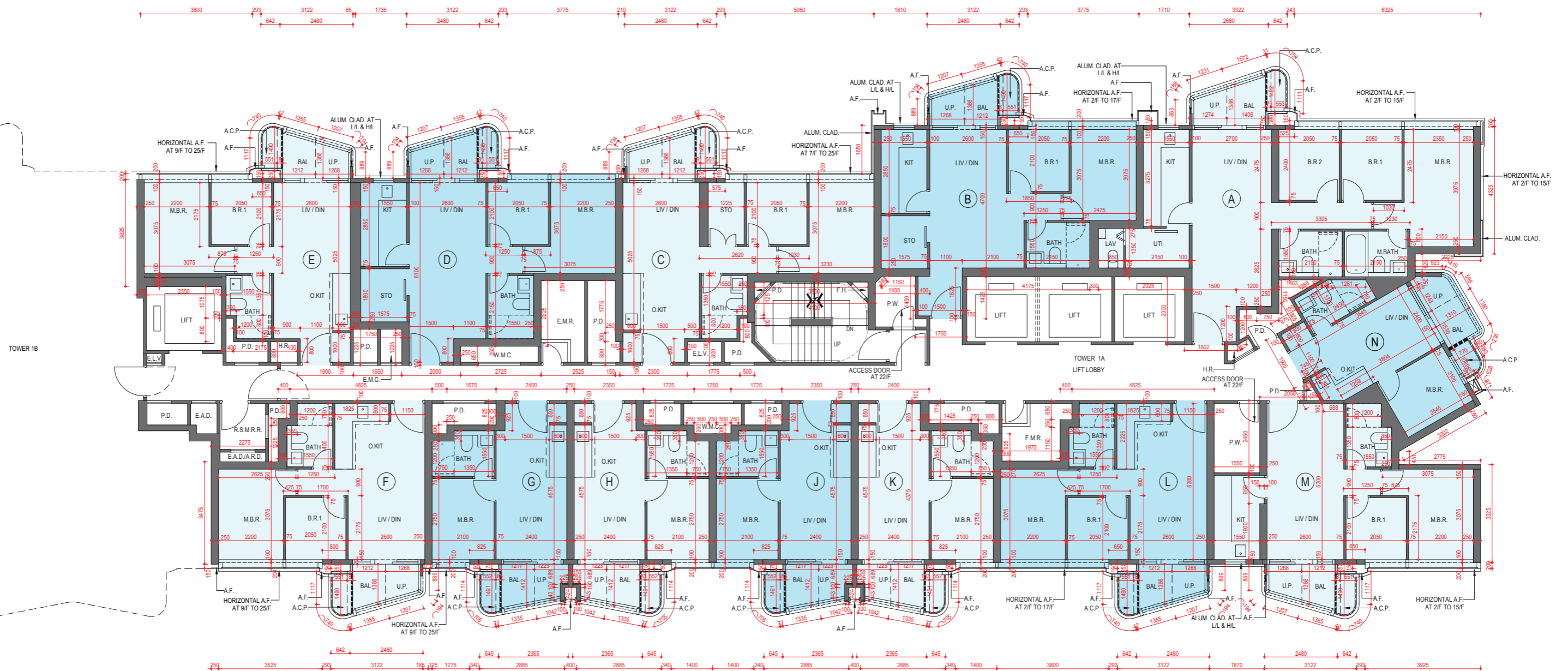
註：

不設4樓、13樓、14樓、24樓及34樓。

TOWER 第 1A 座  
2-35 /F Floor Plan  
樓平面圖



32-35/F Part Plan of Flat C  
32-35樓C單位部分平面圖



# 11 FLOOR PLANS OF RESIDENTIAL PROPERTIES IN THE PHASE 期數的住宅物業的樓面平面圖

	Tower 座數	Floor 樓層	Flat 單位
			A
The thickness of the floor slabs (excluding plaster) of each residential property (mm) 每個住宅物業的樓板 (不包括灰泥) 的厚度 (毫米)	Tower 1A 第1A座	R/F 天台	N/A
The floor-to-floor height (refers to the height between the top surface of the structural slab of a floor and the top surface of the structural slab of its immediate upper floor) of each residential property (mm) 每個住宅物業的層與層之間的高度 (指該樓層之石屎地台面與上一層石屎地台面之高度距離)(毫米)			N/A

The internal areas of the residential properties on the upper floors will generally be slightly larger than those on the lower floors because of the reducing thickness of the structural walls on the upper floors. (Note: This statement required in Section 10(2)(e) in Part 1 of Schedule 1 of the Residential Properties (First-hand Sales) Ordinance (Cap.621) is not applicable to the Phase)

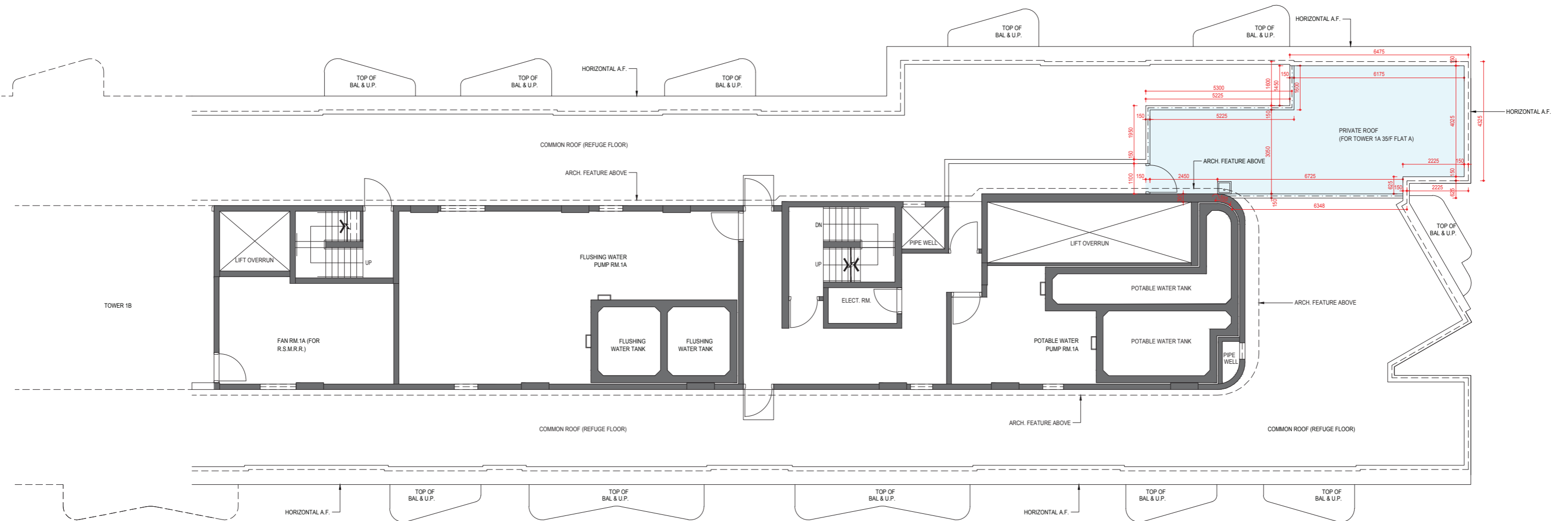
因住宅物業的較高樓層的結構牆的厚度遞減，較高樓層的內部面積，一般比較低樓層的內部面積稍大。(註：此乃根據《一手住宅物業銷售條例》(第621章)附表1第1部第10(2)(e)條所規定的陳述並不適用於期數)

Note:  
4/F, 13/F, 14/F, 24/F and 34/F are omitted.

註：  
不設4樓、13樓、14樓、24樓及34樓。

TOWER 第 **1A** 座

Roof Floor Plan  
天台平面圖



Scale 比例 0 1 2 3 4 5m(米)

# 11 FLOOR PLANS OF RESIDENTIAL PROPERTIES IN THE PHASE

## 期數的住宅物業的樓面平面圖

	Tower 座數	Floor 樓層	Flat 單位							
			A	B	C	D	E	F	G	H
The thickness of the floor slabs (excluding plaster) of each residential property (mm) 每個住宅物業的樓板(不包括灰泥)的厚度(毫米)			125, 150	125, 150	125, 150	125, 150	125, 150	125, 150	125, 150	125, 150
The floor-to-floor height (refers to the height between the top surface of the structural slab of a floor and the top surface of the structural slab of its immediate upper floor) of each residential property (mm) 每個住宅物業的層與層之間的高度(指該樓層之石屎地台面與上一層石屎地台面之高度距離)(毫米)	Tower 1B 第1B座	1/F 1樓	3150, 3400*, 3650*, 3700*, 3750*	3150, 3400*, 3700*, 3750*	3150, 3400*, 3450*, 3700*, 3750*	3400*, 3450*, 3575*, 3700*, 3750*	3150, 3400*, 3450*, 3575*, 3700*, 3750*	3150, 3400*, 3450*, 3700*, 3750*	3150, 3400*, 3450*, 3700*, 3750*	3150, 3400*, 3450*, 3700*, 3750*

\* Inclusive of the thickness of filling on sunken slab.

\* 包括跌級樓板上之填充層厚度。

The internal areas of the residential properties on the upper floors will generally be slightly larger than those on the lower floors because of the reducing thickness of the structural walls on the upper floors. (Note: This statement required in Section 10(2)(e) in Part 1 of Schedule 1 of the Residential Properties (First-hand Sales) Ordinance (Cap.621) is not applicable to the Phase)

因住宅物業的較高樓層的結構牆的厚度遞減，較高樓層的內部面積，一般比較低樓層的內部面積稍大。(註：此乃根據《一手住宅物業銷售條例》(第621章)附表1第1部第10(2)(e)條所規定的陳述並不適用於期數)

Note:

4/F, 13/F, 14/F, 24/F and 34/F are omitted.

註：

不設4樓、13樓、14樓、24樓及34樓。

TOWER 第 1B 座

1/F Floor Plan  
樓平面圖



Scale 比例 0 1 2 3 4 5m(米)

# 11 FLOOR PLANS OF RESIDENTIAL PROPERTIES IN THE PHASE

## 期數的住宅物業的樓面平面圖

	Tower 座數	Floor 樓層	Flat 單位							
			A	B	C	D	E	F	G	H
The thickness of the floor slabs (excluding plaster) of each residential property (mm) 每個住宅物業的樓板(不包括灰泥)的厚度(毫米)			125, 150	125, 150	125, 150	125, 150	125, 150	125, 150	125, 150	125, 150
The floor-to-floor height (refers to the height between the top surface of the structural slab of a floor and the top surface of the structural slab of its immediate upper floor) of each residential property (mm) 每個住宅物業的層與層之間的高度(指該樓層之石屎地台面與上一層石屎地台面之高度距離)(毫米)	Tower 1B 第1B座	2/F 2樓	3150, 3150*	3150, 3150*	3150, 3150*	3150, 3150*	3150, 3150*	3150, 3150*	3150, 3150*	3150, 3150*

\* Inclusive of the thickness of filling on sunken slab.

\* 包括跌級樓板上之填充層厚度。

The internal areas of the residential properties on the upper floors will generally be slightly larger than those on the lower floors because of the reducing thickness of the structural walls on the upper floors. (Note: This statement required in Section 10(2)(e) in Part 1 of Schedule 1 of the Residential Properties (First-hand Sales) Ordinance (Cap.621) is not applicable to the Phase)

因住宅物業的較高樓層的結構牆的厚度遞減，較高樓層的內部面積，一般比較低樓層的內部面積稍大。(註：此乃根據《一手住宅物業銷售條例》(第621章)附表1第1部第10(2)(e)條所規定的陳述並不適用於期數)

Note:

4/F, 13/F, 14/F, 24/F and 34/F are omitted.

註：

不設4樓、13樓、14樓、24樓及34樓。

TOWER 第 1B 座  
2/F Floor Plan  
樓平面圖



Scale 比例 0 1 2 3 4 5m(米)

# 11 FLOOR PLANS OF RESIDENTIAL PROPERTIES IN THE PHASE 期數的住宅物業的樓面平面圖

	Tower 座數	Floor 樓層	Flat 單位									
			A	B	C	D	E	F	G	H	J	K
The thickness of the floor slabs (excluding plaster) of each residential property (mm) 每個住宅物業的樓板(不包括灰泥)的厚度(毫米)	Tower 1B 第1B座	3/F 3樓	125, 150	125, 150	125, 150	125, 150	125, 150	125, 150	125, 150	125, 150	125, 150	125, 150
The floor-to-floor height (refers to the height between the top surface of the structural slab of a floor and the top surface of the structural slab of its immediate upper floor) of each residential property (mm) 每個住宅物業的層與層之間的高度(指該樓層之石屎地台面與上一層石屎地台面之高度距離)(毫米)		3/F 3樓	3150, 3150*	3150, 3150*	3150, 3150*	3150, 3150*	3150, 3150*	3150, 3150*	3150, 3150*	3150, 3150*	3150, 3150*	3150, 3200*, 3250*, 3500*, 3550*

\* Inclusive of the thickness of filling on sunken slab.

\* 包括跌級樓板上之填充層厚度。

The internal areas of the residential properties on the upper floors will generally be slightly larger than those on the lower floors because of the reducing thickness of the structural walls on the upper floors. (Note: This statement required in Section 10(2)(e) in Part 1 of Schedule 1 of the Residential Properties (First-hand Sales) Ordinance (Cap.621) is not applicable to the Phase)

因住宅物業的較高樓層的結構牆的厚度遞減，較高樓層的內部面積，一般比較低樓層的內部面積稍大。(註：此乃根據《一手住宅物業銷售條例》(第621章)附表1第1部第10(2)(e)條所規定的陳述並不適用於期數)

Note:

4/F, 13/F, 14/F, 24/F and 34/F are omitted.

註：

不設4樓、13樓、14樓、24樓及34樓。

TOWER 第 1B 座

3/F Floor Plan  
樓平面圖



# 11 FLOOR PLANS OF RESIDENTIAL PROPERTIES IN THE PHASE 期數的住宅物業的樓面平面圖

	Tower 座數	Floor 樓層	Flat 單位									
			A	B	C	D	E	F	G	H	J	K
The thickness of the floor slabs (excluding plaster) of each residential property (mm) 每個住宅物業的樓板(不包括灰泥)的厚度(毫米)	Tower 1B 第1B座	5/F 5樓	125, 150	125, 150	125, 150	125, 150	125, 150	125, 150	125, 150	125, 150	125, 150	125, 150
The floor-to-floor height (refers to the height between the top surface of the structural slab of a floor and the top surface of the structural slab of its immediate upper floor) of each residential property (mm) 每個住宅物業的層與層之間的高度(指該樓層之石屎地台面與上一層石屎地台面之高度距離)(毫米)		5/F 5樓	3150, 3150*	3150, 3150*	3150, 3150*	3150, 3150*	3150, 3150*	3150, 3150*	3150, 3150*	3150, 3150*	3150, 3150*	3150, 3150*

\* Inclusive of the thickness of filling on sunken slab.

\* 包括跌級樓板上之填充層厚度。

The internal areas of the residential properties on the upper floors will generally be slightly larger than those on the lower floors because of the reducing thickness of the structural walls on the upper floors. (Note: This statement required in Section 10(2)(e) in Part 1 of Schedule 1 of the Residential Properties (First-hand Sales) Ordinance (Cap.621) is not applicable to the Phase)

因住宅物業的較高樓層的結構牆的厚度遞減，較高樓層的內部面積，一般比較低樓層的內部面積稍大。(註：此乃根據《一手住宅物業銷售條例》(第621章)附表1第1部第10(2)(e)條所規定的陳述並不適用於期數)

Note:

4/F, 13/F, 14/F, 24/F and 34/F are omitted.

註：

不設4樓、13樓、14樓、24樓及34樓。

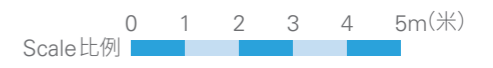
TOWER 第 1B 座

5/F Floor Plan  
樓平面圖



TOWER 1A

TOWER 1C



# 11 FLOOR PLANS OF RESIDENTIAL PROPERTIES IN THE PHASE 期數的住宅物業的樓面平面圖

	Tower 座數	Floor 樓層	Flat 單位									
			A	B	C	D	E	F	G	H	J	K
The thickness of the floor slabs (excluding plaster) of each residential property (mm) 每個住宅物業的樓板(不包括灰泥)的厚度(毫米)	Tower 1B 第1B座	6/F 6樓	125, 150	125, 150	125, 150	125, 150	125, 150	125, 150	125, 150	125, 150	125, 150	125, 150
The floor-to-floor height (refers to the height between the top surface of the structural slab of a floor and the top surface of the structural slab of its immediate upper floor) of each residential property (mm) 每個住宅物業的層與層之間的高度(指該樓層之石屎地台面與上一層石屎地台面之高度距離)(毫米)		6/F 6樓	3150, 3150*	3150, 3150*	3150, 3150*	3150, 3150*	3150, 3150*	3150, 3150*	3150, 3150*	3150, 3150*	3150, 3150*	3150, 3150*

\* Inclusive of the thickness of filling on sunken slab.

\* 包括跌級樓板上之填充層厚度。

The internal areas of the residential properties on the upper floors will generally be slightly larger than those on the lower floors because of the reducing thickness of the structural walls on the upper floors. (Note: This statement required in Section 10(2)(e) in Part 1 of Schedule 1 of the Residential Properties (First-hand Sales) Ordinance (Cap.621) is not applicable to the Phase)

因住宅物業的較高樓層的結構牆的厚度遞減，較高樓層的內部面積，一般比較低樓層的內部面積稍大。(註：此乃根據《一手住宅物業銷售條例》(第621章)附表1第1部第10(2)(e)條所規定的陳述並不適用於期數)

Note:

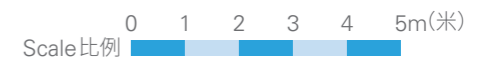
4/F, 13/F, 14/F, 24/F and 34/F are omitted.

註：

不設4樓、13樓、14樓、24樓及34樓。

TOWER 第 1B 座

6/F Floor Plan  
樓平面圖



# 11 FLOOR PLANS OF RESIDENTIAL PROPERTIES IN THE PHASE 期數的住宅物業的樓面平面圖

	Tower 座數	Floor 樓層	Flat 單位											
			A	B	C	D	E	F	G	H	J	K	L	M
The thickness of the floor slabs (excluding plaster) of each residential property (mm) 每個住宅物業的樓板(不包括灰泥)的厚度(毫米)	Tower 1B 第1B座	7/F 7樓	125, 150	125, 150	125, 150	125, 150	125, 150	125, 150	125, 150	125, 150	125, 150	125, 150	125, 150	125, 150
The floor-to-floor height (refers to the height between the top surface of the structural slab of a floor and the top surface of the structural slab of its immediate upper floor) of each residential property (mm) 每個住宅物業的層與層之間的高度(指該樓層之石屎地台面與上一層石屎地台面之高度距離)(毫米)		7/F 7樓	3150, 3150*	3150, 3150*	3150, 3150*	3150, 3150*	3150, 3150*	3150, 3150*	3150, 3150*	3150, 3150*	3150, 3150*	3150, 3150*	3150, 3150*	3150, 3150*

\* Inclusive of the thickness of filling on sunken slab.

\* 包括跌級樓板上之填充層厚度。

The internal areas of the residential properties on the upper floors will generally be slightly larger than those on the lower floors because of the reducing thickness of the structural walls on the upper floors. (Note: This statement required in Section 10(2)(e) in Part 1 of Schedule 1 of the Residential Properties (First-hand Sales) Ordinance (Cap.621) is not applicable to the Phase)

因住宅物業的較高樓層的結構牆的厚度遞減，較高樓層的內部面積，一般比較低樓層的內部面積稍大。(註：此乃根據《一手住宅物業銷售條例》(第621章)附表1第1部第10(2)(e)條所規定的陳述並不適用於期數)

Note:

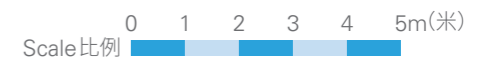
4/F, 13/F, 14/F, 24/F and 34/F are omitted.

註：

不設4樓、13樓、14樓、24樓及34樓。

TOWER 第 1B 座

7/F Floor Plan  
樓平面圖



# 11 FLOOR PLANS OF RESIDENTIAL PROPERTIES IN THE PHASE 期數的住宅物業的樓面平面圖

	Tower 座數	Floor 樓層	Flat 單位														
			A	B	C	D	E	F	G	H	J	K	L	M	N		
The thickness of the floor slabs (excluding plaster) of each residential property (mm) 每個住宅物業的樓板(不包括灰泥)的厚度(毫米)	Tower 1B 第1B座	8/F- 35/F 8樓至 35樓	125, 150	125, 150	125, 150	125, 150	125, 150	125, 150	125, 150	125, 150	125, 150, 175	125, 150	125, 150	125, 150	125, 150	125, 150	
The floor-to-floor height (refers to the height between the top surface of the structural slab of a floor and the top surface of the structural slab of its immediate upper floor) of each residential property (mm) 每個住宅物業的層與層之間的高度(指該樓層之石屎地台面與上一層石屎地台面之高度距離)(毫米)		8/F 8樓	3150, 3150*	3150, 3150*	3150, 3150*	3150, 3150*	3150, 3150*	3150, 3150*	3150, 3150*	3150, 3150*	3150, 3150*	3150, 3150*	3150, 3150*	3150, 3150*	3150, 3150*	3150, 3150*	
		9/F 9樓	3150, 3150*	3150, 3150*	3150, 3150*	3150, 3150*	3150, 3150*	3150, 3150*	3150, 3150*	3150, 3150*	3150, 3150*	3150, 3150*	3150, 3150*	3150, 3150*	3150, 3150*	3150, 3150*	
		10/F- 30/F 10樓至30樓	3150, 3150*	3150, 3150*	3150, 3150*	3150, 3150*	3150, 3150*	3150, 3150*	3150, 3150*	3150, 3150*	3150, 3150*	3150, 3150*	3150, 3150*	3150, 3150*	3150, 3150*	3150, 3150*	
		31/F 31樓	3150, 3150*	3150, 3150*	3150, 3150*	2800, 2850*, 3150, 3150*, 3200*, 3450*, 3500*	3150, 3150*	3150, 3150*	3150, 3150*	3150, 3150*	3150, 3150*	3150, 3150*	3150, 3150*	3150, 3150*	3150, 3150*	3150, 3150*	3150, 3150*
		32/F- 33/F 32樓至33樓	3500, 3500*	3500, 3500*	3500, 3500*	3500, 3500*	3500, 3500*	3500, 3500*	3500, 3500*	3500, 3500*	3500, 3500*	3500, 3500*	3500, 3500*	3500, 3500*	3500, 3500*	3500, 3500*	3500, 3500*
		35/F 35樓	3975, 4000, 4050*, 4100*, 4350*	3975, 4000, 4050*, 4350*	3975, 4000, 4050*, 4300*, 4350*	3975, 4000, 4050*, 4300*, 4350*	3975, 4000, 4050*, 4300*, 4350*	3975, 4000, 4050*, 4300*, 4350*	3975, 4000, 4050*, 4300*, 4350*	3975, 4000, 4050*, 4300*, 4350*	3975, 4000, 4025, 4075*, 4275*, 4375*	3975, 4000, 4050*, 4300*, 4350*	3975, 4000, 4050*, 4300*, 4350*	3975, 4000, 4050*, 4300*, 4350*	3975, 4000, 4050*, 4300*, 4350*	3975, 4000, 4050*, 4300*, 4350*	3975, 4000, 4050*, 4300*, 4350*

\* Inclusive of the thickness of filling on sunken slab.

\* 包括跌級樓板上之填充層厚度。

The internal areas of the residential properties on the upper floors will generally be slightly larger than those on the lower floors because of the reducing thickness of the structural walls on the upper floors. (Note: This statement required in Section 10(2)(e) in Part 1 of Schedule 1 of the Residential Properties (First-hand Sales) Ordinance (Cap.621) is not applicable to the Phase)

因住宅物業的較高樓層的結構牆的厚度遞減，較高樓層的內部面積，一般比較低樓層的內部面積稍大。(註：此乃根據《一手住宅物業銷售條例》(第621章)附表1第1部第10(2)(e)條所規定的陳述並不適用於期數)

Note:

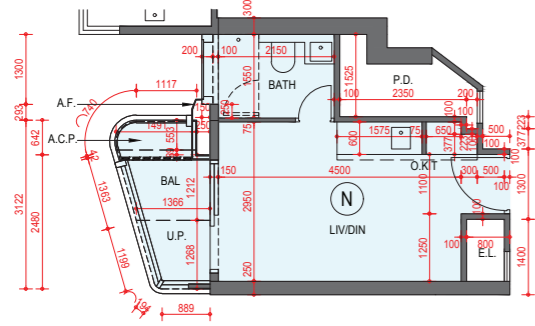
4/F, 13/F, 14/F, 24/F and 34/F are omitted.

註：

不設4樓、13樓、14樓、24樓及34樓。

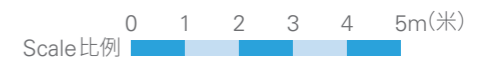
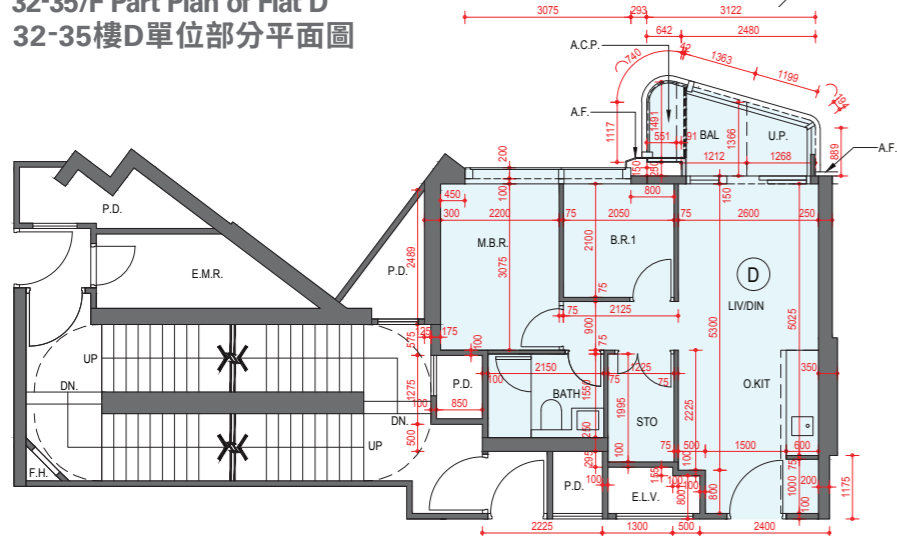


TOWER 第 1B 座  
8-35/F Floor Plan  
樓平面圖



8-9/F Part Plan of Flat N  
8-9樓N單位部分平面圖

32-35/F Part Plan of Flat D  
32-35樓D單位部分平面圖



# 11 FLOOR PLANS OF RESIDENTIAL PROPERTIES IN THE PHASE 期數的住宅物業的樓面平面圖

	Tower 座數	Floor 樓層	Flat 單位
			A
The thickness of the floor slabs (excluding plaster) of each residential property (mm) 每個住宅物業的樓板(不包括灰泥)的厚度(毫米)	Tower 1B 第1B座	R/F 天台	N/A
The floor-to-floor height (refers to the height between the top surface of the structural slab of a floor and the top surface of the structural slab of its immediate upper floor) of each residential property (mm) 每個住宅物業的層與層之間的高度 (指該樓層之石屎地台面與上一層石屎地台面之高度距離)(毫米)			N/A

The internal areas of the residential properties on the upper floors will generally be slightly larger than those on the lower floors because of the reducing thickness of the structural walls on the upper floors. (Note: This statement required in Section 10(2)(e) in Part 1 of Schedule 1 of the Residential Properties (First-hand Sales) Ordinance (Cap.621) is not applicable to the Phase)

因住宅物業的較高樓層的結構牆的厚度遞減，較高樓層的內部面積，一般比較低樓層的內部面積稍大。(註：此乃根據《一手住宅物業銷售條例》(第621章)附表1第1部第10(2)(e)條所規定的陳述並不適用於期數)

Note:  
4/F, 13/F, 14/F, 24/F and 34/F are omitted.

註：  
不設4樓、13樓、14樓、24樓及34樓。



# 11 FLOOR PLANS OF RESIDENTIAL PROPERTIES IN THE PHASE 期數的住宅物業的樓面平面圖

	Tower 座數	Floor 樓層	Flat 單位									
			A	B	C	F	G	H	J	K	L	M
The thickness of the floor slabs (excluding plaster) of each residential property (mm) 每個住宅物業的樓板(不包括灰泥)的厚度(毫米)			125, 150, 175	125, 150, 175	125, 150, 175	125, 150	125, 150	125, 150	125, 150	125, 150	125, 150	125, 150
The floor-to-floor height (refers to the height between the top surface of the structural slab of a floor and the top surface of the structural slab of its immediate upper floor) of each residential property (mm) 每個住宅物業的層與層之間的高度(指該樓層之石屎地台面與上一層石屎地台面之高度距離)(毫米)	Tower 1C 第1C座	3/F 3樓	3150, 3150*, 3200*, 3250*, 3500*, 3550*	3150, 3200*, 3250*, 3500*, 3550*	3150, 3200*, 3250*, 3500*, 3550*	3150, 3200*, 3250*, 3500*, 3550*	3150, 3200*, 3250*, 3500*, 3550*	3150, 3200*, 3250*, 3500*, 3550*	3150, 3200*, 3250*, 3500*, 3550*	3150, 3200*, 3300*, 3500*, 3550*	3150, 3200*, 3250*, 3500*, 3550*	3150, 3150*, 3200*, 3250*, 3425, 3500*, 3550*

\* Inclusive of the thickness of filling on sunken slab.

\* 包括跌級樓板上之填充層厚度。

The internal areas of the residential properties on the upper floors will generally be slightly larger than those on the lower floors because of the reducing thickness of the structural walls on the upper floors. (Note: This statement required in Section 10(2)(e) in Part 1 of Schedule 1 of the Residential Properties (First-hand Sales) Ordinance (Cap.621) is not applicable to the Phase)

因住宅物業的較高樓層的結構牆的厚度遞減，較高樓層的內部面積，一般比較低樓層的內部面積稍大。(註：此乃根據《一手住宅物業銷售條例》(第621章)附表1第1部第10(2)(e)條所規定的陳述並不適用於期數)

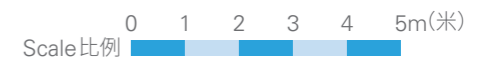
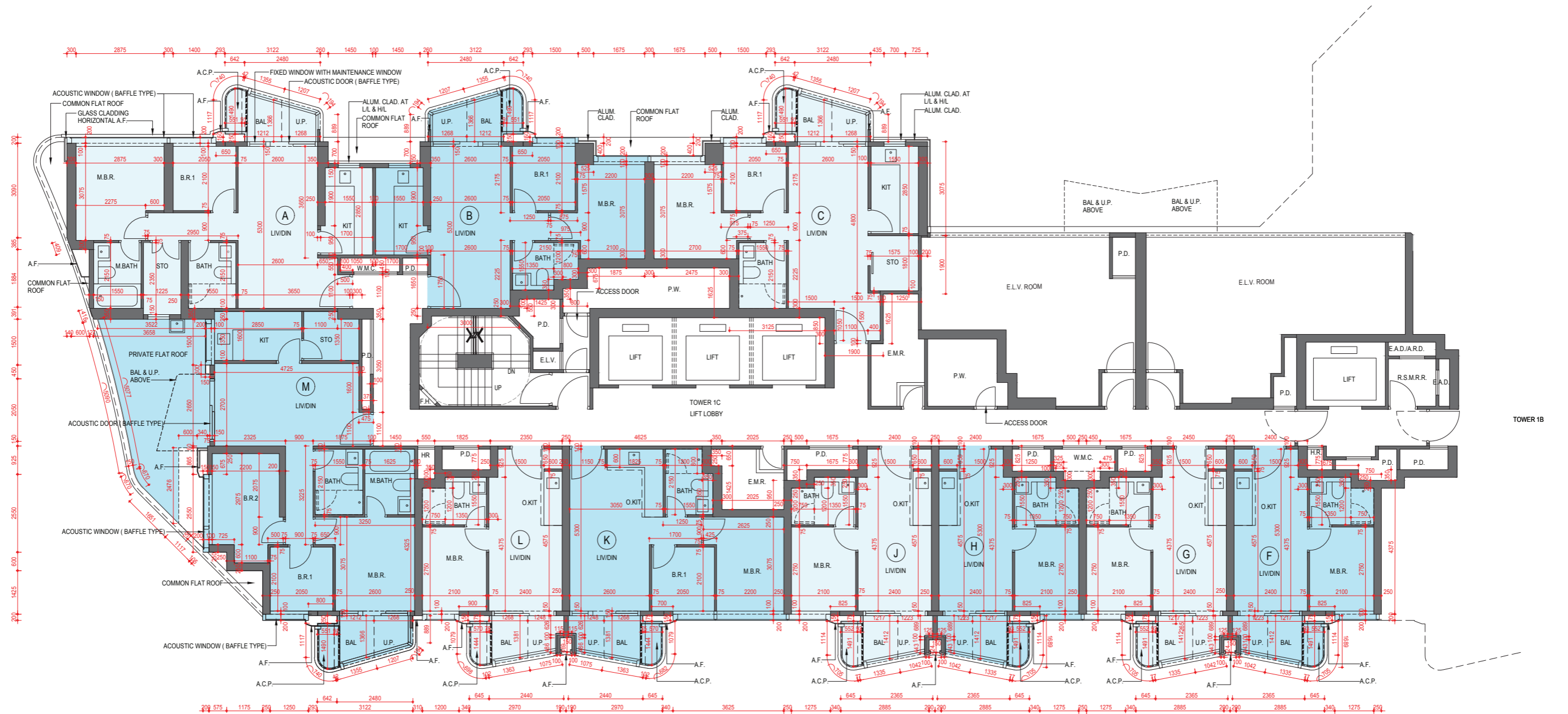
Note:

4/F, 13/F, 14/F, 24/F and 34/F are omitted.

註：

不設4樓、13樓、14樓、24樓及34樓。

TOWER 第 10 座  
3/F Floor Plan  
樓平面圖



# 11 FLOOR PLANS OF RESIDENTIAL PROPERTIES IN THE PHASE 期數的住宅物業的樓面平面圖

	Tower 座數	Floor 樓層	Flat 單位												
			A	B	C	D	E	F	G	H	J	K	L	M	N
The thickness of the floor slabs (excluding plaster) of each residential property (mm) 每個住宅物業的樓板(不包括灰泥)的厚度(毫米)	Tower 1C 第1C座	5/F 5樓	125, 150, 175	125, 150, 175	125, 150, 175	125, 150	125, 150	125, 150	125, 150	125, 150	125, 150	125, 150	125, 150	125, 150	125, 150
The floor-to-floor height (refers to the height between the top surface of the structural slab of a floor and the top surface of the structural slab of its immediate upper floor) of each residential property (mm) 每個住宅物業的層與層之間的高度(指該樓層之石屎地台面與上一層石屎地台面之高度距離)(毫米)			3150, 3150*	3150, 3150*	3150, 3150*	3150, 3150*	3150, 3150*	3150, 3150*	3150, 3150*	3150, 3150*	3150, 3150*	3150, 3150*	3150, 3150*	3150, 3150*	3150, 3150*

\* Inclusive of the thickness of filling on sunken slab.

\* 包括跌級樓板上之填充層厚度。

The internal areas of the residential properties on the upper floors will generally be slightly larger than those on the lower floors because of the reducing thickness of the structural walls on the upper floors. (Note: This statement required in Section 10(2)(e) in Part 1 of Schedule 1 of the Residential Properties (First-hand Sales) Ordinance (Cap.621) is not applicable to the Phase)

因住宅物業的較高樓層的結構牆的厚度遞減，較高樓層的內部面積，一般比較低樓層的內部面積稍大。(註：此乃根據《一手住宅物業銷售條例》(第621章)附表1第1部第10(2)(e)條所規定的陳述並不適用於期數)

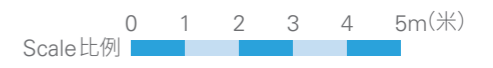
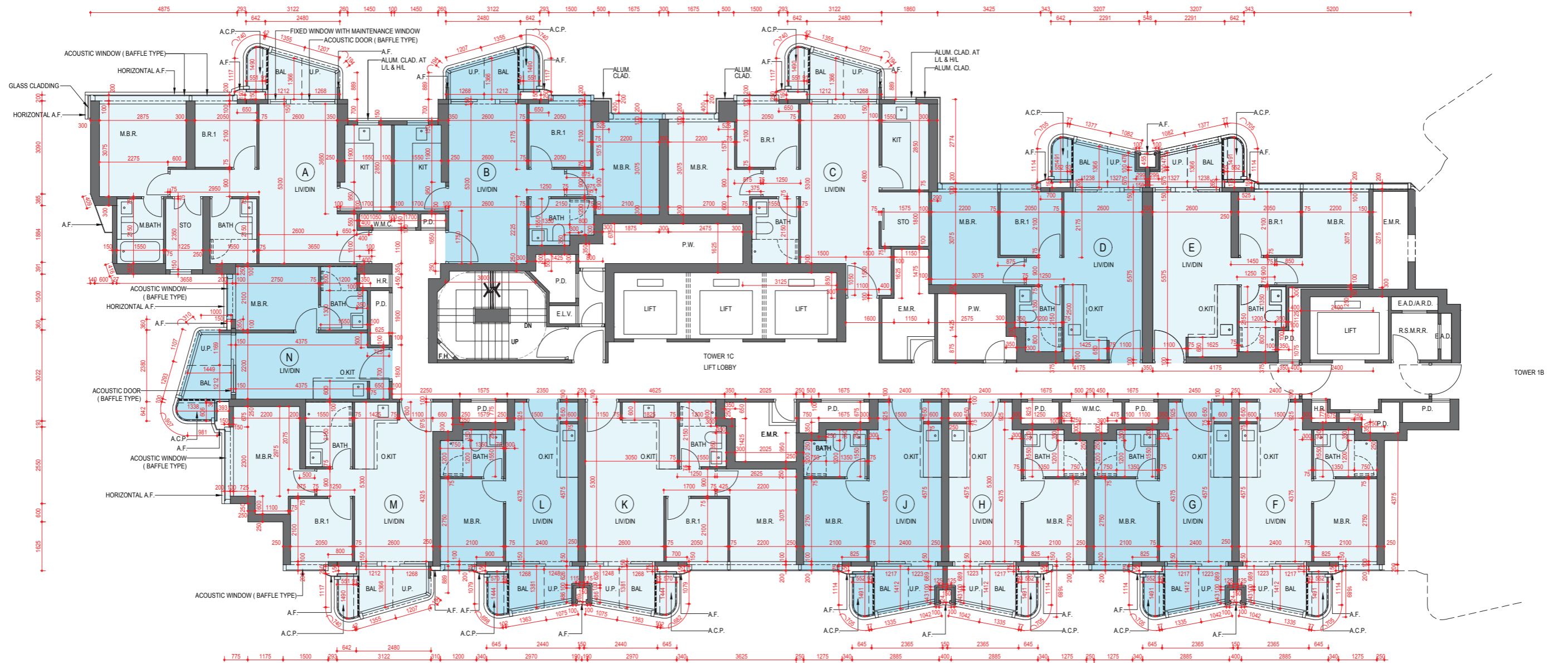
Note:

4/F, 13/F, 14/F, 24/F and 34/F are omitted.

註：

不設4樓、13樓、14樓、24樓及34樓。

TOWER 第 10 座  
5 /F Floor Plan  
樓平面圖



# 11 FLOOR PLANS OF RESIDENTIAL PROPERTIES IN THE PHASE 期數的住宅物業的樓面平面圖

	Tower 座數	Floor 樓層	Flat 單位												
			A	B	C	D	E	F	G	H	J	K	L	M	N
The thickness of the floor slabs (excluding plaster) of each residential property (mm) 每個住宅物業的樓板(不包括灰泥)的厚度(毫米)	Tower 1C 第1C座	6/F 6樓	125, 150, 175	125, 150, 175	125, 150, 175	125, 150	125, 150	125, 150	125, 150	125, 150	125, 150	125, 150	125, 150	125, 150	125, 150
The floor-to-floor height (refers to the height between the top surface of the structural slab of a floor and the top surface of the structural slab of its immediate upper floor) of each residential property (mm) 每個住宅物業的層與層之間的高度(指該樓層之石屎地台面與上一層石屎地台面之高度距離)(毫米)			3150, 3150*	3150, 3150*	3150, 3150*	3150, 3150*	3150, 3150*	3150, 3150*	3150, 3150*	3150, 3150*	3150, 3150*	3150, 3150*	3150, 3150*	3150, 3150*	3150, 3150*

\* Inclusive of the thickness of filling on sunken slab.

\* 包括跌級樓板上之填充層厚度。

The internal areas of the residential properties on the upper floors will generally be slightly larger than those on the lower floors because of the reducing thickness of the structural walls on the upper floors. (Note: This statement required in Section 10(2)(e) in Part 1 of Schedule 1 of the Residential Properties (First-hand Sales) Ordinance (Cap.621) is not applicable to the Phase)

因住宅物業的較高樓層的結構牆的厚度遞減，較高樓層的內部面積，一般比較低樓層的內部面積稍大。(註：此乃根據《一手住宅物業銷售條例》(第621章)附表1第1部第10(2)(e)條所規定的陳述並不適用於期數)

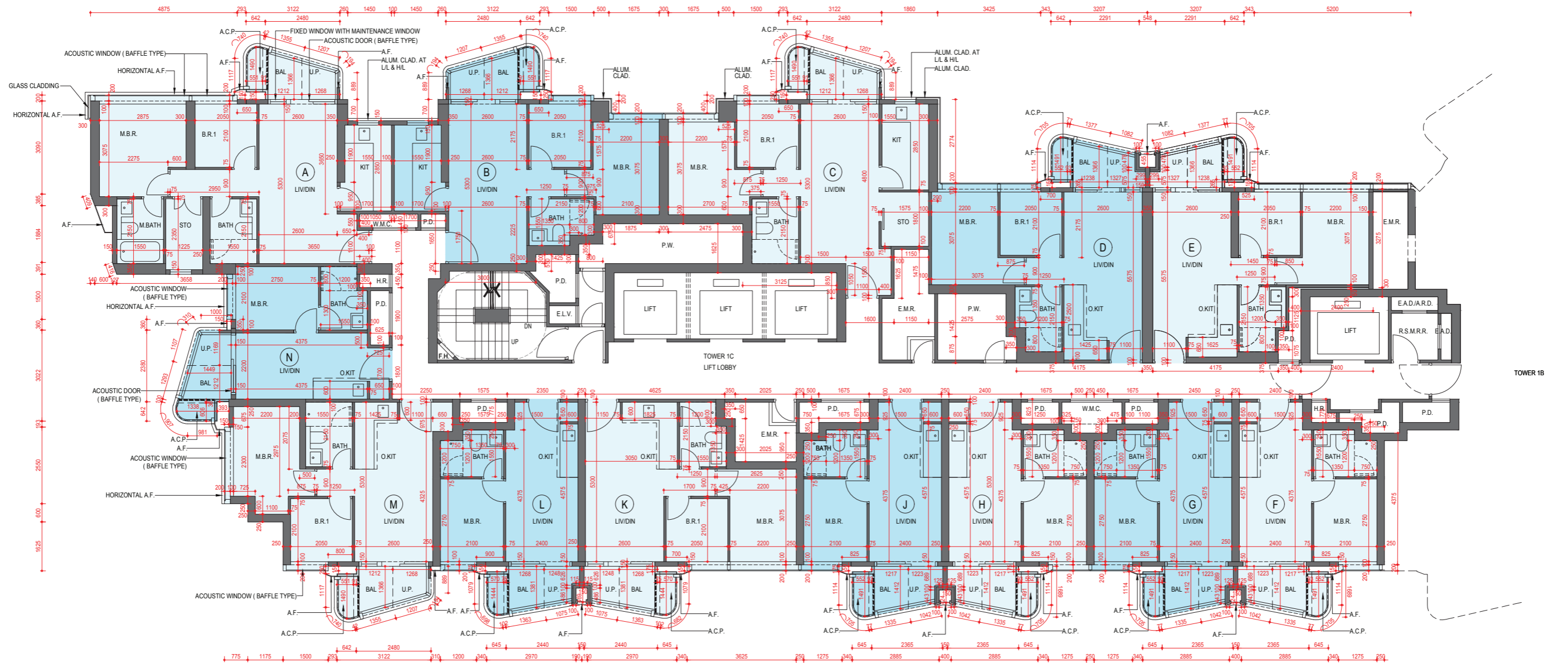
Note:

4/F, 13/F, 14/F, 24/F and 34/F are omitted.

註：

不設4樓、13樓、14樓、24樓及34樓。

TOWER 第 10 座  
6/F Floor Plan  
樓平面圖



Scale 比例 0 1 2 3 4 5m(米)

# 11 FLOOR PLANS OF RESIDENTIAL PROPERTIES IN THE PHASE 期數的住宅物業的樓面平面圖

	Tower 座數	Floor 樓層	Flat 單位												
			A	B	C	D	E	F	G	H	J	K	L	M	N
The thickness of the floor slabs (excluding plaster) of each residential property (mm) 每個住宅物業的樓板(不包括灰泥)的厚度(毫米)	Tower 1C 第1C座	7/F- 31/F 7樓至31樓	125, 150, 175	125, 150, 175	125, 150, 175	125, 150	125, 150	125, 150	125, 150	125, 150	125, 150	125, 150	125, 150	125, 150	125, 150
		32/F- 33/F 32樓至33樓	125, 150, 175	125, 150, 175	125, 150, 175	125, 150	125, 150	125, 150	125, 150	125, 150	125, 150	125, 150	125, 150	125, 150	125, 150
		35/F 35樓	125, 150, 175	125, 150, 175	125, 150	125, 150	125, 150	125, 150	125, 150	125, 150	125, 150	125, 150	125, 150	125, 150	125, 150
7/F- 31/F 7樓至31樓		3150, 3150*	3150, 3150*	3150, 3150*	3150, 3150*	3150, 3150*	3150, 3150*	3150, 3150*	3150, 3150*	3150, 3150*	3150, 3150*	3150, 3150*	3150, 3150*	3150, 3150*	3150, 3150*
32/F- 33/F 32樓至33樓		3500, 3500*	3500, 3500*	3500, 3500*	3500, 3500*	3500, 3500*	3500, 3500*	3500, 3500*	3500, 3500*	3500, 3500*	3500, 3500*	3500, 3500*	3500, 3500*	3500, 3500*	3500, 3500*
35/F 35樓		3975, 4000, 4050*, 4300*, 4350*, 4400*	3975, 4000, 4050*, 4300*, 4350*	3975, 4000, 4050*, 4300*, 4350*	3975, 4000, 4050*, 4300*, 4350*	3975, 4000, 4050*, 4300*, 4350*	3975, 4000, 4050*, 4300*, 4350*	3975, 4000, 4050*, 4300*, 4350*	3975, 4000, 4050*, 4300*, 4350*	3975, 4000, 4050*, 4300*, 4350*	3975, 4000, 4050*, 4300*, 4350*	3975, 4000, 4050*, 4250*, 4350*	3975, 4000, 4050*, 4300*, 4350*	3975, 4000, 4050*, 4350*, 4400*	3975, 4000, 4050*, 4300*, 4350*

\* Inclusive of the thickness of filling on sunken slab.

\* 包括跌級樓板上之填充層厚度。

The internal areas of the residential properties on the upper floors will generally be slightly larger than those on the lower floors because of the reducing thickness of the structural walls on the upper floors. (Note: This statement required in Section 10(2)(e) in Part 1 of Schedule 1 of the Residential Properties (First-hand Sales) Ordinance (Cap.621) is not applicable to the Phase)

因住宅物業的較高樓層的結構牆的厚度遞減，較高樓層的內部面積，一般比較低樓層的內部面積稍大。(註：此乃根據《一手住宅物業銷售條例》(第621章)附表1第1部第10(2)(e)條所規定的陳述並不適用於期數)

Note:

4/F, 13/F, 14/F, 24/F and 34/F are omitted.

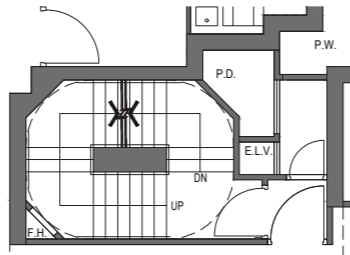
註：

不設4樓、13樓、14樓、24樓及34樓。

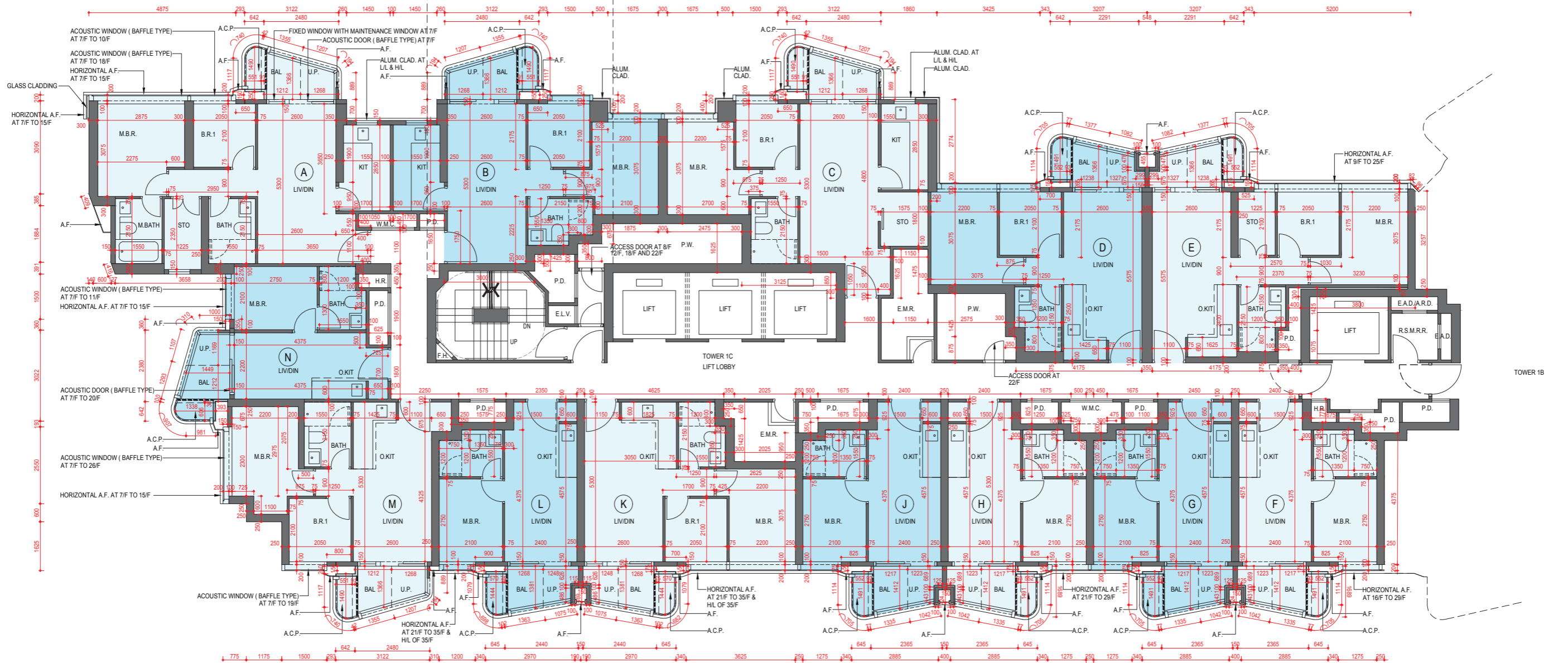


TOWER 第 10 座

7-35/F Floor Plan  
樓平面圖



32-35/F Part Plan of Flat D  
32-35樓D單位部分平面圖



Scale 比例 0 1 2 3 4 5m(米)