

FLOOR PLANS OF RESIDENTIAL PROPERTIES IN THE DEVELOPMENT

發展項目的住宅物業的樓面平面圖

Legend of Terms and Abbreviations used on floor plans 樓面平面圖中所使用名詞及簡稱之圖例：

A/C PLINTH	= AIR-CONDITIONER PLINTH	冷氣機台	MAINTENANCE FLAT ROOF (COMMON)	= MAINTENANCE FLAT ROOF (COMMON)	維修公共平台
AC.H	= AIR-CONDITIONER HOOD	冷氣機遮簷	M.BATH	= MASTER BATHROOM	主人浴室
ACP	= AIR-CONDITIONER PLATFORM	冷氣機平台	M.CA.	= SPACE FOR MAINTENANCE (COMMON)	公共維修空間範圍
A.D.	= AIR DUCT	風管槽	M.B.R.	= MASTER BEDROOM	主人睡房
A.F./ARCH. FEATURE	= ARCHITECTURAL FEATURE	建築裝飾	N.M.M.F.	= NOISE MITIGATION MEASURES (ACOUSTIC FIN)	噪音緩解措施(隔聲簷)
A.G.	= ALUMINUM GRILLE	鋁質格柵			
AL.C	= ALUMINUM PIPE COVER AT LOW LEVEL	位於低位鋁質管道覆蓋	N.M.M.P.	= NOISE MITIGATION MEASURES (90mm THICK SOUND ABSORPTIVE PANEL CLADDING)	噪音緩解措施 (90毫米厚吸音面板)
ALUM. A.F. / ALUM. ARCH. FEATURE	= ALUMINUM ARCHITECTURAL FEATURE	鋁質建築裝飾			
ALUM. ARCH. FEATURE AT H/L	= ALUMINUM ARCHITECTURAL FEATURE AT HIGH LEVEL	鋁質建築裝飾於高位			
ALUM. CLADDING	= ALUMINUM CLADDING	鋁質覆蓋層板	OPEN KIT.	= OPEN KITCHEN	開放式廚房
BAL.	= BALCONY	露台	P.D.	= PIPE DUCT	管道槽
BAL. & U.P. ABOVE	= BALCONY & UTILITY PLATFORM ABOVE	露台及工作平台置上	POTABLE WATER PUMP ROOM	= POTABLE WATER PUMP ROOM	食水泵房
BUILDING LINE ABOVE	= BUILDING LINE ABOVE	建築物界線置上	PERFORATED METAL PANEL	= PERFORATED METAL PANEL	穿孔金屬板
BATH	= BATHROOM	浴室	R.C. MOULDING	= REINFORCED CONCRETE MOULDING	鋼筋混凝土裝飾線條
B.R.1	= BEDROOM 1	睡房1	ROOF	= ROOF	天台
B.R.2	= BEDROOM 2	睡房2	ROOF (FOR 38/F FLAT X)	= ROOF (FOR 38/F FLAT X)	天台(屬於38樓 X 單位)
B.R.3	= BEDROOM 3	睡房3	ROOF (REFUGE AREA)	= ROOF (REFUGE AREA)	天台(庇護層)
COVER OF BAL. & U.P. BELOW	= COVER OF BALCONY & UTILITY PLATFORM BELOW	露台及工作平台頂蓋	R.S.M.R.R.	= REFUSE STORAGE AND MATERIAL RECOVERY ROOM	垃圾及物料回收室
DN	= DOWN	落	S.	= SINK	洗滌盆
DOG HOUSE	= DOG HOUSE	室外管道檢修井	TOP OF ACOUSTIC FINS AND PANEL	= TOP OF ACOUSTIC FINS AND PANEL	隔聲簷和隔聲板頂部
DOG-HOUSE (FOR A/C)	= DOG HOUSE (FOR AIR-CONDITIONER)	室外管道檢修井(供冷氣機)	UP	= UP	上
E.D.	= ELECTRICAL DUCT	電線管道	U.P.	= UTILITY PLATFORM	工作平台
ELECT. ROOM	= ELECTRICAL ROOM	電力房	UTILITY ROOM	= UTILITY ROOM	工作間
ELV. ROOM/ELV ROOM	= EXTRA-LOW VOLTAGE ROOM	特低電壓房	W.M.C.	= WATER METER CABINET	水錶櫃
FLAT ROOF	= FLAT ROOF	平台	X/F BUILDING LINE ABOVE	= X/F BUILDING LINE ABOVE	X樓建築物界線置上
FLAT ROOF (COMMON)	= FLAT ROOF (COMMON)	公共平台	#M	= NOISE MITIGATION MEASURES (AUTO-CLOSE DOOR)	噪音緩解措施(自動關閉式門)
FLAT ROOF (FOR FLAT X)	= FLAT ROOF (FOR FLAT X)	平台(屬於X單位)			
FAN ROOM FOR R.S.M.R.R.	= FAN ROOM FOR REFUSE STORAGE AND MATERIAL RECOVERY ROOM	垃圾及物料回收室之風機房	#M1	= NOISE MITIGATION MEASURES (FIXED GLAZING WITH MAINTENANCE WINDOW)	噪音緩解措施 (固定窗戶連維修窗)
FIREMAN 'S LOBBY	= FIREMAN 'S LOBBY	消防員升降機大堂			
H.R.	= HOSE REEL	消防喉轆			
H.R. AT L/L	= HOSE REEL AT LOW LEVEL	消防喉轆於低位	(#RCM)	= REINFORCED CONCRETE MOULDING AT WINDOW HEAD (AT 3/F, 6/F, 8/F, 10/F, 12/F, 16/F, 18/F, 20/F, 22/F, 25/F, 27/F, 29/F, 31/F, 33/F, 36/F & 38/F ONLY)	位於窗戶頂之鋼筋混凝土裝飾線條 (僅於3樓、6樓、8樓、10樓、12樓、 16樓、18樓、20樓、22樓、25樓、 27樓、29樓、31樓、33樓、36樓及38樓)
KIT.	= KITCHEN	廚房			
		不可到達的中空 (輕質混凝土回填)			
INACCESSIBLE VOID (WITH LIGHTWEIGHT CONC. FILL)	= INACCESSIBLE VOID (WITH LIGHTWEIGHT CONCRETE FILL)			REINFORCED CONCRETE MOULDING AT WINDOW CILL (AT 5/F, 7/F, 9/F, 11/F, 15/F, 17/F, 19/F, 21/F, 23/F, 26/F, 28/F, 30/F, 32/F, 35/F & 37/F ONLY)	位於窗戶底之鋼筋混凝土裝飾線條 (僅於5樓、7樓、9樓、11樓、15樓、 17樓、19樓、21樓、23樓、26樓、 28樓、30樓、32樓、35樓及37樓)
LAV.	= LAVATORY	洗手間			
LIFT	= LIFT	升降機			
LIFT LOBBY	= LIFT LOBBY	升降機大堂			
LIFT SHAFT	= LIFT SHAFT	升降機槽			
LIV./DIN.	= LIVING ROOM AND DINING ROOM	客廳及飯廳			

Notes:

- Some residential units have ceiling bulkheads and sunken slab at living room and dining room, bedrooms, bathrooms, corridor and kitchen for air-conditioning system and/or other mechanical and electrical services.
- There may be architectural features and/or exposed common pipes on external walls of some floors.
- There may be communal pipes and/or mechanical and electrical services within balconies, utility platforms, flat roofs and roofs of some residential units.
- Symbols of fittings and fitments shown on the floor plans, such as bathtubs, sink, water closets, shower, etc. are architectural symbols retrieved from the latest approved general building plans and for general indication only.
- Balconies and utility platforms are non-enclosed areas.

備註：

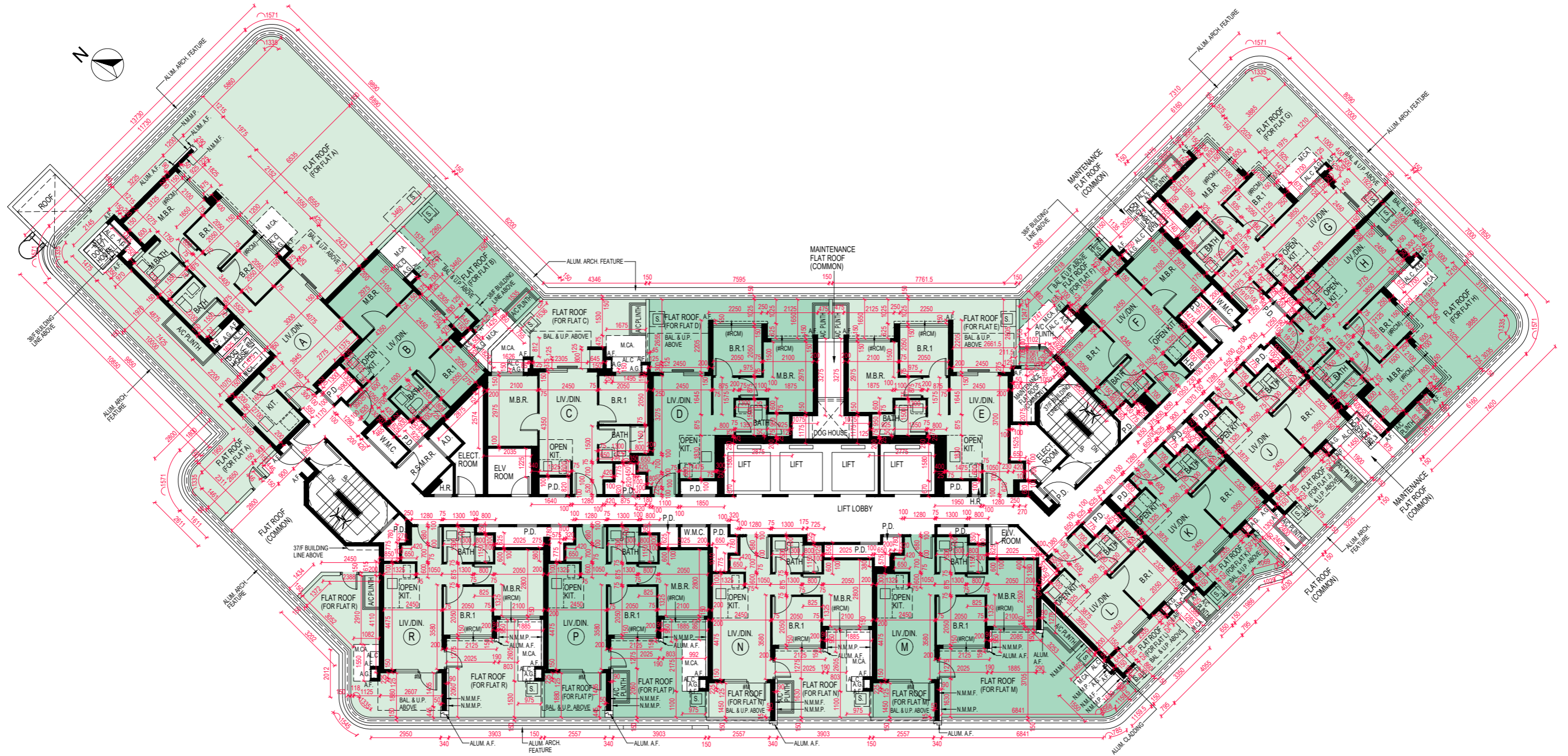
- 部份住宅單位的客廳及飯廳、睡房、浴室、走廊及廚房之天花有假天花及/或跌級樓板，用以安裝空調及/或其他機電設備。
- 部份樓層外牆或設有建築裝飾及/或外露喉管。
- 部份住宅單位之露台、工作平台、平台及天台內或裝有公用喉管及/或機電設備。
- 平面圖上所顯示的形象裝置符號，例如浴缸、洗滌盆、坐廁、花灑等乃摘自最新的經批准的建築圖則，只作一般性標誌。
- 露台和工作平台為不可封閉的地方。

FLOOR PLANS OF RESIDENTIAL PROPERTIES IN THE DEVELOPMENT

發展項目的住宅物業的樓面平面圖

3/F FLOOR PLAN

3樓平面圖



Scale 比例
0M(米) 2M(米) 4M(米)

FLOOR PLANS OF RESIDENTIAL PROPERTIES IN THE DEVELOPMENT

發展項目的住宅物業的樓面平面圖

The thickness of the floor slabs (excluding plaster) and floor-to-floor height of each residential property of the Development as provided in the approved building plans are:
按發展項目的經批准的建築圖則所規定，發展項目每個住宅物業的樓板(不包括灰泥)的厚度及層與層之間的高度為：

Floor 樓層	Flat 單位	The thickness of the floor slabs (excluding plaster) of the residential property (mm) 每個住宅物業的樓板(不包括灰泥)的厚度(毫米)	Floor-to-floor height of each residential property (mm) 每個住宅物業的層與層之間的高度(毫米)
3/F 3樓	A	150, 300	2800, 3075, 3150
	B	150	2800, 3075, 3150
	C	150	2800, 3075, 3150
	D	150	2800, 2950, 3150
	E	150, 300	2800, 2950, 3150
	F	150, 300	2800, 3075, 3150
	G	150	2800, 3075, 3150
	H	150	2800, 3075, 3150
	J	150	2800, 3075, 3150
	K	150	2800, 3075, 3150
	L	150	2800, 2900, 3075, 3150
	M	150, 300	2800, 3075, 3150
	N	150, 300	2800, 2950, 3075, 3150
	P	150, 300	2800, 3075, 3150
R	150, 300	2800, 3075, 3150	

The internal areas of the residential properties on the upper floors will generally be slightly larger than those on the lower floors because of the reducing thickness of the structural walls on the upper floors. (This does not apply to the residential properties in the Development because the design of the Development does not involve reducing thickness of structural walls of residential properties on the upper floor and hence internal areas of those residential properties will not be increased.)
因住宅物業的較高的樓層結構牆的厚度遞減，較高樓層的內部面積，一般比較低樓層的內部面積稍大。(不適用於發展項目的住宅物業，因發展項目的設計是不牽涉較高樓層的住宅物業的結構牆的厚度遞減。因此，該等住宅物業的內部面積不會增加。)

Notes :

- The dimensions of floor plan are all structural dimensions in millimetre.
- Please refer to Page AL1 of this sales brochure for remarks and legend of the terms and abbreviations shown on this floor plan.
- Dotted line in a residential unit with open kitchen delineates the extent of open kitchen area.
[] Extent of Open Kitchen Area
- Maintenance windows at fixed glazing with maintenance window (not for ventilation purpose) are openable for maintenances only.

備註:

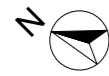
- 樓面平面圖所列之尺寸數字以毫米標示之建築結構尺寸。
- 請參閱本售樓說明書第AL1頁之附註及圖例以協助解讀此部份的平面圖及其顯示之名詞及簡稱。
- 設有開放式廚房的住宅單位內所顯示的虛線代表開放式廚房範圍。
[] 開放式廚房範圍
- 固定式窗戶連維修窗(不作通風用途)中的維修窗戶只能在作維修時開啟。

FLOOR PLANS OF RESIDENTIAL PROPERTIES IN THE DEVELOPMENT

發展項目的住宅物業的樓面平面圖

5/F - 12/F, 15/F - 23/F, 25/F - 33/F & 35/F - 36/F FLOOR PLAN

5樓至12樓、15樓至23樓、25樓至33樓及35樓至36樓平面圖



Scale 比例
0M(米) 2M(米) 4M(米)

FLOOR PLANS OF RESIDENTIAL PROPERTIES IN THE DEVELOPMENT

發展項目的住宅物業的樓面平面圖

The thickness of the floor slabs (excluding plaster) and floor-to-floor height of each residential property of the Development as provided in the approved building plans are:
按發展項目的經批准的建築圖則所規定，發展項目每個住宅物業的樓板(不包括灰泥)的厚度及層與層之間的高度為：

Floor 樓層	Flat 單位	The thickness of the floor slabs (excluding plaster) of the residential property (mm) 每個住宅物業的樓板(不包括灰泥)的厚度(毫米)	Floor-to-floor height of each residential property (mm) 每個住宅物業的層與層之間的高度(毫米)
5/F - 12/F, 15/F - 23/F, 25/F - 33/F & 35/F - 36/F 5樓至12樓、15樓至23樓、 25樓至33樓及35樓至36樓	A	150, 300	2800, 3075, 3150
	B	150	2800, 3075, 3150
	C	150	2800, 3075, 3150
	D	150	2800, 2950, 3150
	E	150, 300	2800, 2950, 3150
	F	150, 300	2800, 3075, 3150
	G	150	2800, 3075, 3150
	H	150	2800, 3075, 3150
	J	150	2800, 3075, 3150
	K	150	2800, 3075, 3150
	L	150	2800, 2900, 3075, 3150
	M	150, 300	2800, 3075, 3150
	N	150, 300	2800, 2950, 3075, 3150
	P	150, 300	2800, 3075, 3150
R	150, 300	2800, 3075, 3150	

The internal areas of the residential properties on the upper floors will generally be slightly larger than those on the lower floors because of the reducing thickness of the structural walls on the upper floors. (This does not apply to the residential properties in the Development because the design of the Development does not involve reducing thickness of structural walls of residential properties on the upper floor and hence internal areas of those residential properties will not be increased.)
因住宅物業的較高的樓層結構牆的厚度遞減，較高樓層的內部面積，一般比較低樓層的內部面積稍大。(不適用於發展項目的住宅物業，因發展項目的設計是不牽涉較高樓層的住宅物業的結構牆的厚度遞減。因此，該等住宅物業的內部面積不會增加。)

Notes :

- The dimensions of floor plan are all structural dimensions in millimetre.
- Please refer to Page AL1 of this sales brochure for remarks and legend of the terms and abbreviations shown on this floor plan.
- Dotted line in a residential unit with open kitchen delineates the extent of open kitchen area.
[] Extent of Open Kitchen Area
- Maintenance windows at fixed glazing with maintenance window (not for ventilation purpose) are openable for maintenances only.

備註:

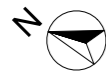
- 樓面平面圖所列之尺寸數字以毫米標示之建築結構尺寸。
- 請參閱本售樓說明書第AL1頁之附註及圖例以協助解讀此部份的平面圖及其顯示之名詞及簡稱。
- 設有開放式廚房的住宅單位內所顯示的虛線代表開放式廚房範圍。
[] 開放式廚房範圍
- 固定式窗戶連維修窗(不作通風用途)中的維修窗戶只能在作維修時開啟。

FLOOR PLANS OF RESIDENTIAL PROPERTIES IN THE DEVELOPMENT

發展項目的住宅物業的樓面平面圖

37/F FLOOR PLAN

37樓平面圖



Scale 比例
 0M(米) 2M(米) 4M(米)

FLOOR PLANS OF RESIDENTIAL PROPERTIES IN THE DEVELOPMENT

發展項目的住宅物業的樓面平面圖

The thickness of the floor slabs (excluding plaster) and floor-to-floor height of each residential property of the Development as provided in the approved building plans are:
按發展項目的經批准的建築圖則所規定，發展項目每個住宅物業的樓板(不包括灰泥)的厚度及層與層之間的高度為：

Floor 樓層	Flat 單位	The thickness of the floor slabs (excluding plaster) of the residential property (mm) 每個住宅物業的樓板(不包括灰泥)的厚度(毫米)	Floor-to-floor height of each residential property (mm) 每個住宅物業的層與層之間的高度(毫米)
37/F 37樓	A	150, 200, 300	3050, 3150, 3325, 3400
	B	150, 200	3050, 3150, 3400
	C	150	3050, 3325, 3400
	D	150	3050, 3200, 3400
	E	150, 300	3050, 3200, 3400
	F	150, 200, 300	3050, 3150, 3325, 3400
	G	150, 200, 400	3150, 3400
	H	150, 200, 400	3050, 3150, 3400
	J	150	3050, 3325, 3400
	K	150	3050, 3325, 3400
	L	150	3050, 3150, 3325, 3400
	M	150, 300	3050, 3325, 3400
	N	150, 300	3050, 3200, 3325, 3400
	P	150, 300	3050, 3325, 3400
R	150, 300	3050, 3325, 3400	

The internal areas of the residential properties on the upper floors will generally be slightly larger than those on the lower floors because of the reducing thickness of the structural walls on the upper floors. (This does not apply to the residential properties in the Development because the design of the Development does not involve reducing thickness of structural walls of residential properties on the upper floor and hence internal areas of those residential properties will not be increased.)
因住宅物業的較高的樓層結構牆的厚度遞減，較高樓層的內部面積，一般比較低樓層的內部面積稍大。(不適用於發展項目的住宅物業，因發展項目的設計是不牽涉較高樓層的住宅物業的結構牆的厚度遞減。因此，該等住宅物業的內部面積不會增加。)

Notes :

- The dimensions of floor plan are all structural dimensions in millimetre.
- Please refer to Page AL1 of this sales brochure for remarks and legend of the terms and abbreviations shown on this floor plan.
- Dotted line in a residential unit with open kitchen delineates the extent of open kitchen area.
[] Extent of Open Kitchen Area
- Maintenance windows at fixed glazing with maintenance window (not for ventilation purpose) are openable for maintenances only.

備註:

- 樓面平面圖所列之尺寸數字以毫米標示之建築結構尺寸。
- 請參閱本售樓說明書第AL1頁之附註及圖例以協助解讀此部份的平面圖及其顯示之名詞及簡稱。
- 設有開放式廚房的住宅單位內所顯示的虛線代表開放式廚房範圍。
[] 開放式廚房範圍
- 固定式窗戶連維修窗(不作通風用途)中的維修窗戶只能在作維修時開啟。

FLOOR PLANS OF RESIDENTIAL PROPERTIES IN THE DEVELOPMENT

發展項目的住宅物業的樓面平面圖

38/F FLOOR PLAN

38樓平面圖



Scale 比例
 0M(米) 2M(米) 4M(米)

FLOOR PLANS OF RESIDENTIAL PROPERTIES IN THE DEVELOPMENT

發展項目的住宅物業的樓面平面圖

The thickness of the floor slabs (excluding plaster) and floor-to-floor height of each residential property of the Development as provided in the approved building plans are:
按發展項目的經批准的建築圖則所規定，發展項目每個住宅物業的樓板(不包括灰泥)的厚度及層與層之間的高度為：

Floor 樓層	Flat 單位	The thickness of the floor slabs (excluding plaster) of the residential property (mm) 每個住宅物業的樓板(不包括灰泥)的厚度(毫米)	Floor-to-floor height of each residential property (mm) 每個住宅物業的層與層之間的高度(毫米)
38/F 38樓	A	200	3250, 3275
	C	200	3250, 3275
	D	200	3250, 3275
	E	200, 300	3250, 3275
	G	200, 300	3250, 3275
	J	200	3250, 3275
	K	200	3250, 3275
	L	200	3250, 3275
	M	200, 300	3250, 3275
	N	200, 300	3250, 3275
	P	200, 300	3250, 3275
R	200, 300	3250, 3275	

The internal areas of the residential properties on the upper floors will generally be slightly larger than those on the lower floors because of the reducing thickness of the structural walls on the upper floors. (This does not apply to the residential properties in the Development because the design of the Development does not involve reducing thickness of structural walls of residential properties on the upper floor and hence internal areas of those residential properties will not be increased.)

因住宅物業的較高的樓層結構牆的厚度遞減，較高樓層的內部面積，一般比較低樓層的內部面積稍大。(不適用於發展項目的住宅物業，因發展項目的設計是不牽涉較高樓層的住宅物業的結構牆的厚度遞減。因此，該等住宅物業的內部面積不會增加。)

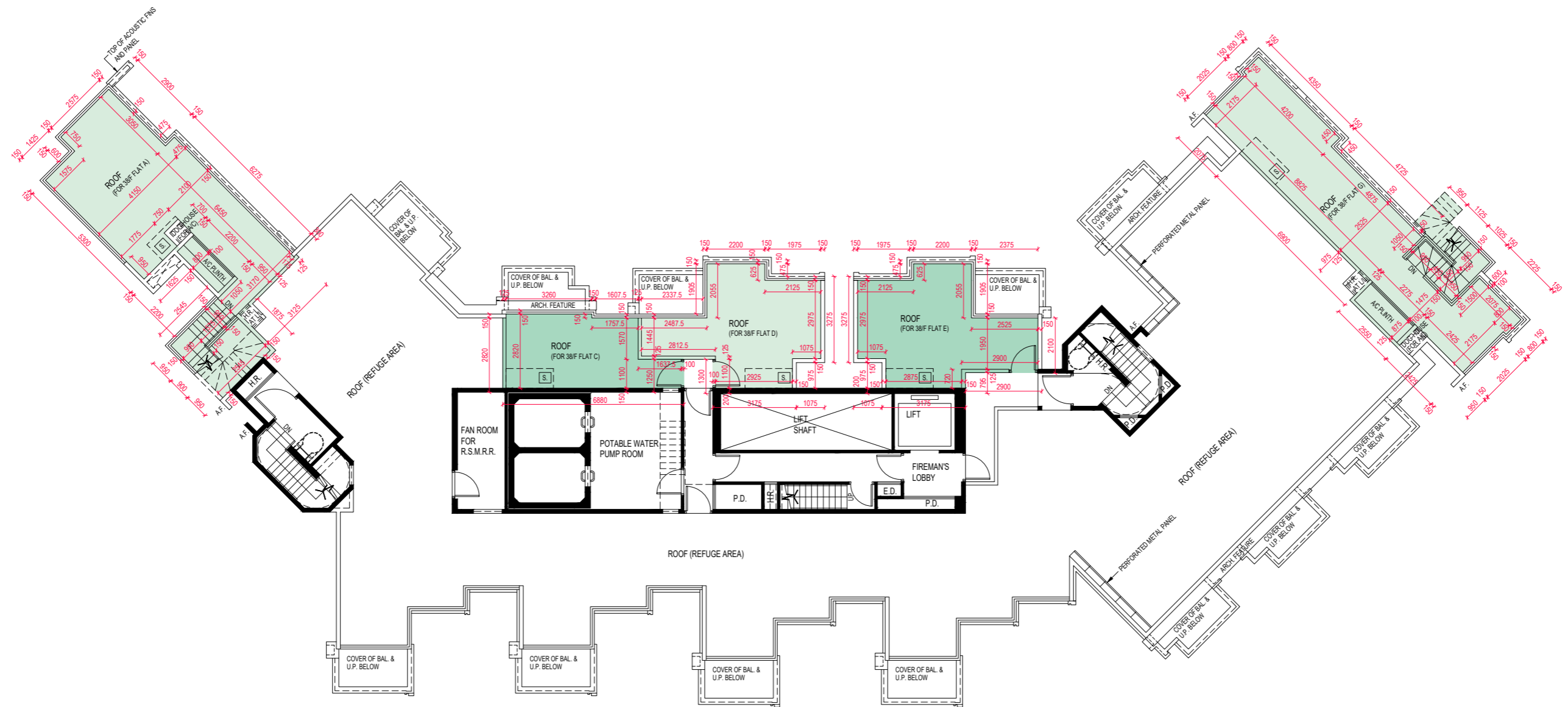
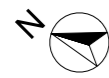
Notes :

- The dimensions of floor plan are all structural dimensions in millimetre.
- Please refer to Page AL1 of this sales brochure for remarks and legend of the terms and abbreviations shown on this floor plan.
- Dotted line in a residential unit with open kitchen delineates the extent of open kitchen area.
[] Extent of Open Kitchen Area
- Maintenance windows at fixed glazing with maintenance window (not for ventilation purpose) are openable for maintenances only.

備註:

- 樓面平面圖所列之尺寸數字以毫米標示之建築結構尺寸。
- 請參閱本售樓說明書第AL1頁之附註及圖例以協助解讀此部份的平面圖及其顯示之名詞及簡稱。
- 設有開放式廚房的住宅單位內所顯示的虛線代表開放式廚房範圍。
[] 開放式廚房範圍
- 固定式窗戶連維修窗(不作通風用途)中的維修窗戶只能在作維修時開啟。

ROOF FLOOR PLAN
 天台平面圖



Scale 比例
 0M(米) 2M(米) 4M(米)

FLOOR PLANS OF RESIDENTIAL PROPERTIES IN THE DEVELOPMENT 發展項目的住宅物業的樓面平面圖

The thickness of the floor slabs (excluding plaster) and floor-to-floor height of each residential property of the Development as provided in the approved building plans are:
按發展項目的經批准的建築圖則所規定，發展項目每個住宅物業的樓板（不包括灰泥）的厚度及層與層之間的高度為：

Floor 樓層	Flat 單位	The thickness of the floor slabs (excluding plaster) of the residential property (mm) 每個住宅物業的樓板（不包括灰泥）的厚度（毫米）	Floor-to-floor height of each residential property (mm) 每個住宅物業的層與層之間的高度（毫米）
Roof 天台	A	Not Applicable 不適用	Not Applicable 不適用
	C		
	D		
	E		
	G		

The internal areas of the residential properties on the upper floors will generally be slightly larger than those on the lower floors because of the reducing thickness of the structural walls on the upper floors. (This does not apply to the residential properties in the Development because the design of the Development does not involve reducing thickness of structural walls of residential properties on the upper floor and hence internal areas of those residential properties will not be increased.)
因住宅物業的較高的樓層結構牆的厚度遞減，較高樓層的內部面積，一般比較低樓層的內部面積稍大。（不適用於發展項目的住宅物業，因發展項目的設計是不牽涉較高樓層的住宅物業的結構牆的厚度遞減。因此，該等住宅物業的內部面積不會增加。）

Notes :

- The dimensions of floor plan are all structural dimensions in millimetre.
- Please refer to Page AL1 of this sales brochure for remarks and legend of the terms and abbreviations shown on this floor plan.
- Dotted line in a residential unit with open kitchen delineates the extent of open kitchen area.
[---] Extent of Open Kitchen Area
- Maintenance windows at fixed glazing with maintenance window (not for ventilation purpose) are openable for maintenances only.

備註:

- 樓面平面圖所列之尺寸數字以毫米標示之建築結構尺寸。
- 請參閱本售樓說明書第AL1頁之附註及圖例以協助解讀此部份的平面圖及其顯示之名詞及簡稱。
- 設有開放式廚房的住宅單位內所顯示的虛線代表開放式廚房範圍。
[---] 開放式廚房範圍
- 固定式窗戶連維修窗（不作通風用途）中的維修窗戶只能在作維修時開啟。