

FLOOR PLANS OF RESIDENTIAL PROPERTIES IN THE DEVELOPMENT

發展項目的住宅物業的樓面平面圖

LEGEND OF THE TERMS AND ABBREVIATIONS USED ON FLOOR PLANS 樓面平面圖中所使用之名詞及簡稱之圖例

A/C	= Air conditioner 空調機
BAL & U.P.	= Balcony & Utility Platform 露台及工作平台
BATH	= Bathroom 浴室
BEDROOM	= Bedroom 睡房
BEDROOM 1	= Bedroom 睡房 1
BEDROOM 2	= Bedroom 睡房 2
CORR.	= Corridor 走廊
DN	= Down 下
ELEC.	= Electrical duct 機電管道
ELEC. METER DUCT	= Electrical meter duct 電錶管道
ELV. DUCT	= Extra-low voltage duct 特低壓電管道
F.H.	= Fire Hydrant 消防栓
H.R.	= Hose Reel 消防喉轆
LIV. & DIN.	= Living & Dining Room 客飯廳
M. BATH	= Master Bathroom 主人浴室
M. BEDROOM	= Master Bedroom 主人睡房
OPEN KIT.	= Open Kitchen 開放式廚房
W.M.C.	= Water meter cabinet 水錶櫃

Remarks:

1. There may be architectural features and/or exposed common pipes on external walls of some floors.
2. There may be communal pipes and/or mechanical and electrical services within balconies, utility platforms, flat roofs and roofs of some residential units.
3. Some residential units have ceiling bulkheads and/or sunken slab at living room, bedrooms, bathrooms, internal staircase, corridor and kitchen for air-conditioning system and/or other mechanical and electrical services.
4. Symbols of fittings and fitments shown on the floor plans, such as sink, water closets, shower, sink counter, cabinet (if any), etc. are architectural symbols retrieved from the latest approved general building plans and for general indication only.
5. Balconies and utility platforms are non-enclosed areas.
6. The dimensions of the floor plans are all structural dimensions in millimeter.

備註：

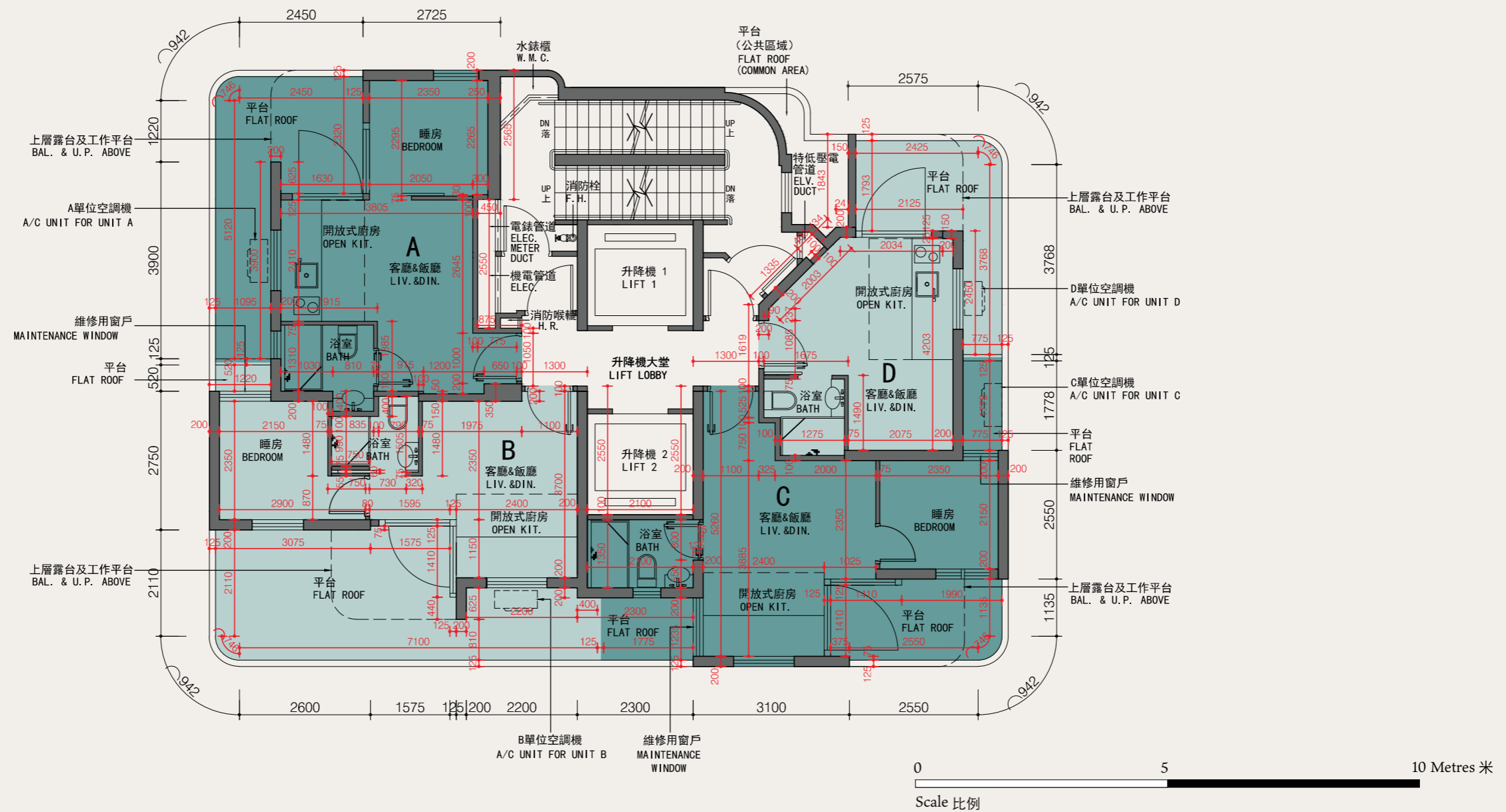
1. 部份樓層外牆或設有建築裝飾及／或外露喉管。
2. 部份住宅單位之露台、工作平台、平台及天台內或裝有公用喉管及／或機電設備。
3. 部分住宅單位的客廳、睡房、浴室、室內樓梯、走廊及廚房之天花有假天花及／或跌級樓板，以安裝空調系統及／或其他機電設備。
4. 平面圖上所顯示的形象裝置符號，例如洗滌盆、坐廁、花灑、洗滌盆櫃、櫃（如有）等乃摘自最新的經批准的建築圖則，只作一般性標誌。
5. 露台和工作平台為不可封閉的地方。
6. 樓面平面圖之尺寸所列數字為以毫米標示之建築結構尺寸。

FLOOR PLANS OF RESIDENTIAL PROPERTIES IN THE DEVELOPMENT

發展項目的住宅物業的樓面平面圖

3rd FLOOR PLAN

3樓平面圖



Description 描述	Unit 單位			
	A	B	C	D
The thickness of the floor slabs (excluding plaster) of each residential property (mm) 每個住宅物業的樓板 (不包括灰泥) 的厚度 (毫米)	125 150	150	125 150	150
The floor-to-floor height of each residential property (mm) 每個住宅物業的層與層之間的高度 (毫米)	2700 3150	2600 3150	2800 3150	2700 3150

The internal areas of the residential properties on the upper floors will generally be slightly larger than those on the lower floors because of the reducing thickness of the structural walls on the upper floors and section. (Not applicable for this Development)

因住宅物業的較高樓層的結構牆的厚度遞減，較高樓層的內部面積，一般比較低樓層的內部面積稍大。(不適用於此發展項目)

Notes:

- The dimensions in floor plans are all structural dimensions in millimeter.
- Please refer to page 25 of this sales brochure for legend of the terms and abbreviations used on floor plans of residential properties.

備註:

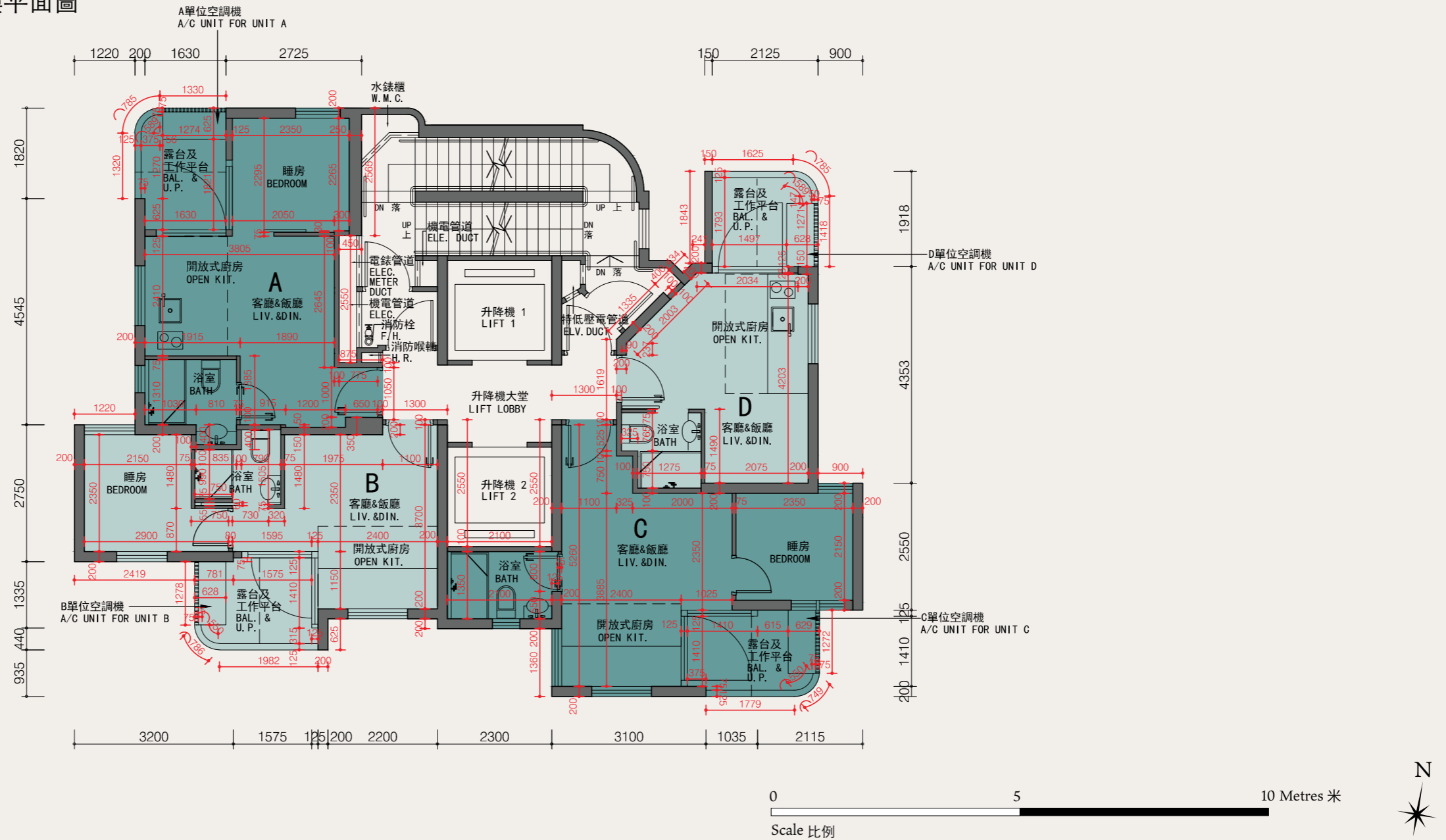
- 平面圖所列的數字為以毫米標示之建築結構尺寸。
- 請參閱本售樓說明書第25頁為住宅物業的樓面平面圖而設之名稱及簡稱之圖例。

FLOOR PLANS OF RESIDENTIAL PROPERTIES IN THE DEVELOPMENT

發展項目的住宅物業的樓面平面圖

5th TO 12th, 15th TO 23th & 25th TO 26th FLOOR PLAN

5樓至12樓、15樓至23樓及25樓至26樓平面圖



Description 描述	Unit 單位			
	A	B	C	D
The thickness of the floor slabs (excluding plaster) of each residential property (mm) 每個住宅物業的樓板(不包括灰泥)的厚度(毫米)	125 150	150	125 150	150
The floor-to-floor height of each residential property (mm) 每個住宅物業的層與層之間的高度(毫米)	2700 3150 3150 (for 26/F only) (僅適用於26樓)	2600 3150	2800 3150	2700 3150

The internal areas of the residential properties on the upper floors will generally be slightly larger than those on the lower floors because of the reducing thickness of the structural walls on the upper floors and section. (Not applicable for this Development)

因住宅物業的較高樓層的結構牆的厚度遞減，較高樓層的內部面積，一般比較低樓層的內部面積稍大。(不適用於此發展項目)

Notes:

- The dimensions in floor plans are all structural dimensions in millimeter.
- Please refer to page 25 of this sales brochure for legend of the terms and abbreviations used on floor plans of residential properties.

備註:

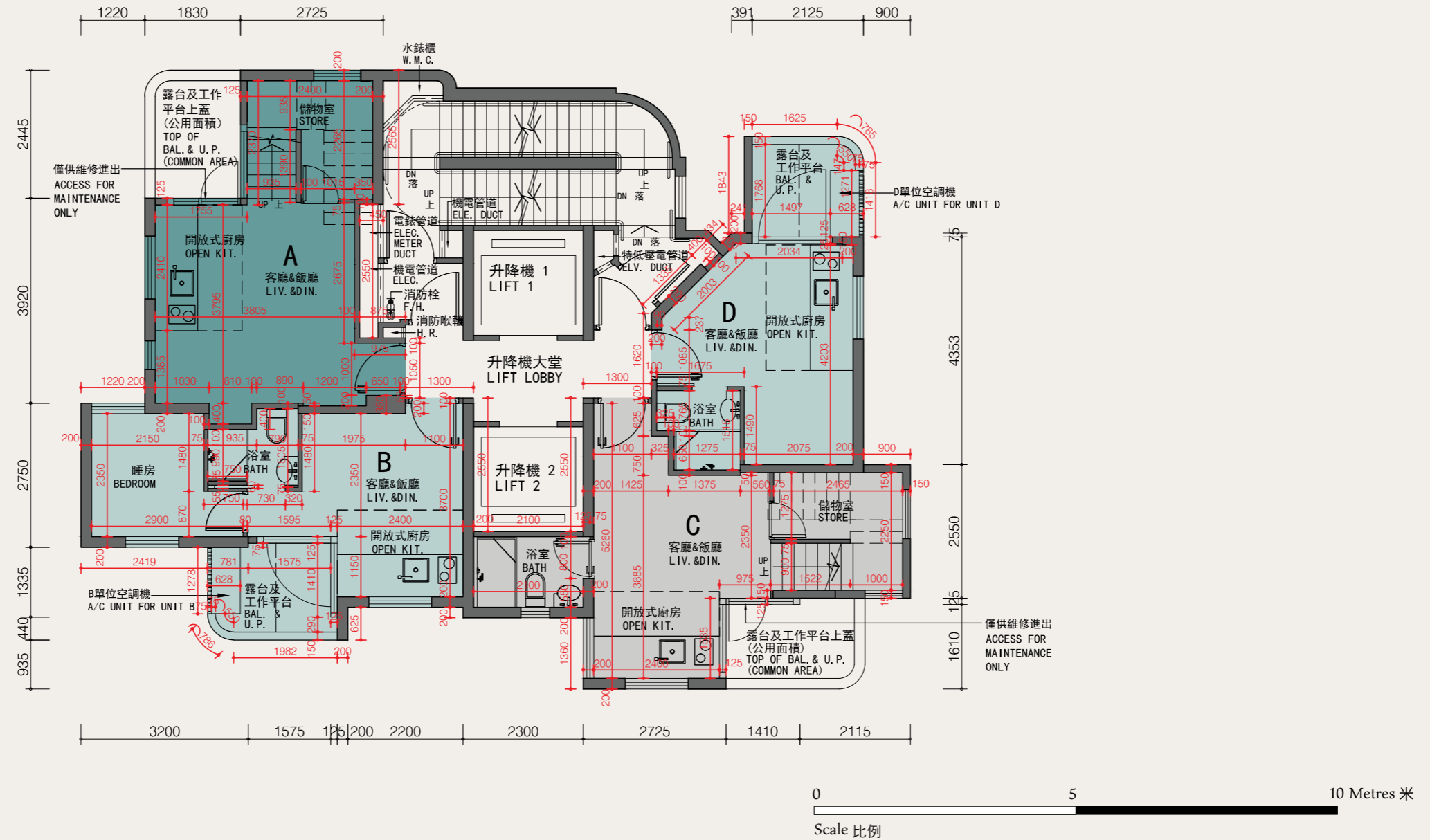
- 平面圖所列的數字為以毫米標示之建築結構尺寸。
- 請參閱本售樓說明書第25頁為住宅物業的樓面平面圖而設之詞及簡稱之圖例。

FLOOR PLANS OF RESIDENTIAL PROPERTIES IN THE DEVELOPMENT

發展項目的住宅物業的樓面平面圖

27th FLOOR PLAN

27樓平面圖



Description 描述	Unit 單位			
	A	B	C	D
The thickness of the floor slabs (excluding plaster) of each residential property (mm) 每個住宅物業的樓板 (不包括灰泥) 的厚度 (毫米)	150	150	150	150
The floor-to-floor height of each residential property (mm) 每個住宅物業的層與層之間的高度 (毫米)	3150 3325	2975 3150 3325	2975 3150 3325	3150 3300 3325

The internal areas of the residential properties on the upper floors will generally be slightly larger than those on the lower floors because of the reducing thickness of the structural walls on the upper floors and section. (Not applicable for this Development)

因住宅物業的較高樓層的結構牆的厚度遞減，較高樓層的內部面積，一般比較低樓層的內部面積稍大。(不適用於此發展項目)

Notes:

- The dimensions in floor plans are all structural dimensions in millimeter.
- Please refer to page 25 of this sales brochure for legend of the terms and abbreviations used on floor plans of residential properties.

備註:

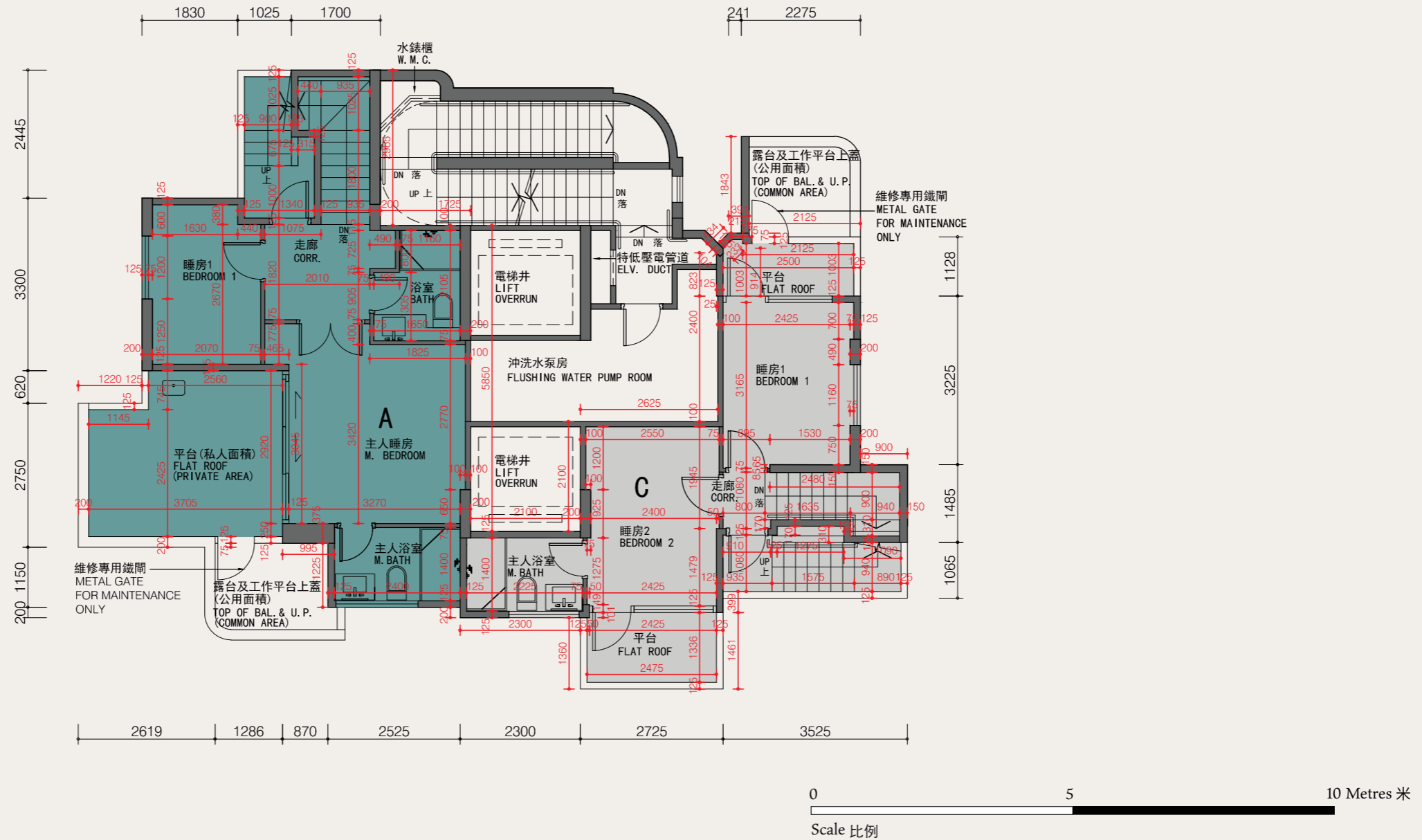
- 平面圖所列的數字為以毫米標示之建築結構尺寸。
- 請參閱本售樓說明書第25頁為住宅物業的樓面平面圖而設之詞及簡稱之圖例。

FLOOR PLANS OF RESIDENTIAL PROPERTIES IN THE DEVELOPMENT

發展項目的住宅物業的樓面平面圖

28th FLOOR PLAN

28樓平面圖



Description 描述	Unit 單位	
	A	C
The thickness of the floor slabs (excluding plaster) of each residential property (mm) 每個住宅物業的樓板 (不包括灰泥) 的厚度 (毫米)	150, 200	150
The floor-to-floor height of each residential property (mm) 每個住宅物業的層與層之間的高度 (毫米)	3325	3325

The internal areas of the residential properties on the upper floors will generally be slightly larger than those on the lower floors because of the reducing thickness of the structural walls on the upper floors and section. (Not applicable for this Development)

因住宅物業的較高樓層的結構牆的厚度遞減，較高樓層的內部面積，一般比較低樓層的內部面積稍大。(不適用於此發展項目)

Notes:

- The dimensions in floor plans are all structural dimensions in millimeter.
- Please refer to page 25 of this sales brochure for legend of the terms and abbreviations used on floor plans of residential properties.

備註:

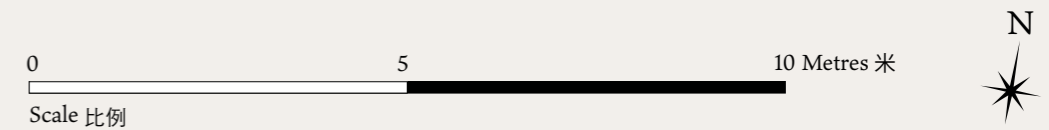
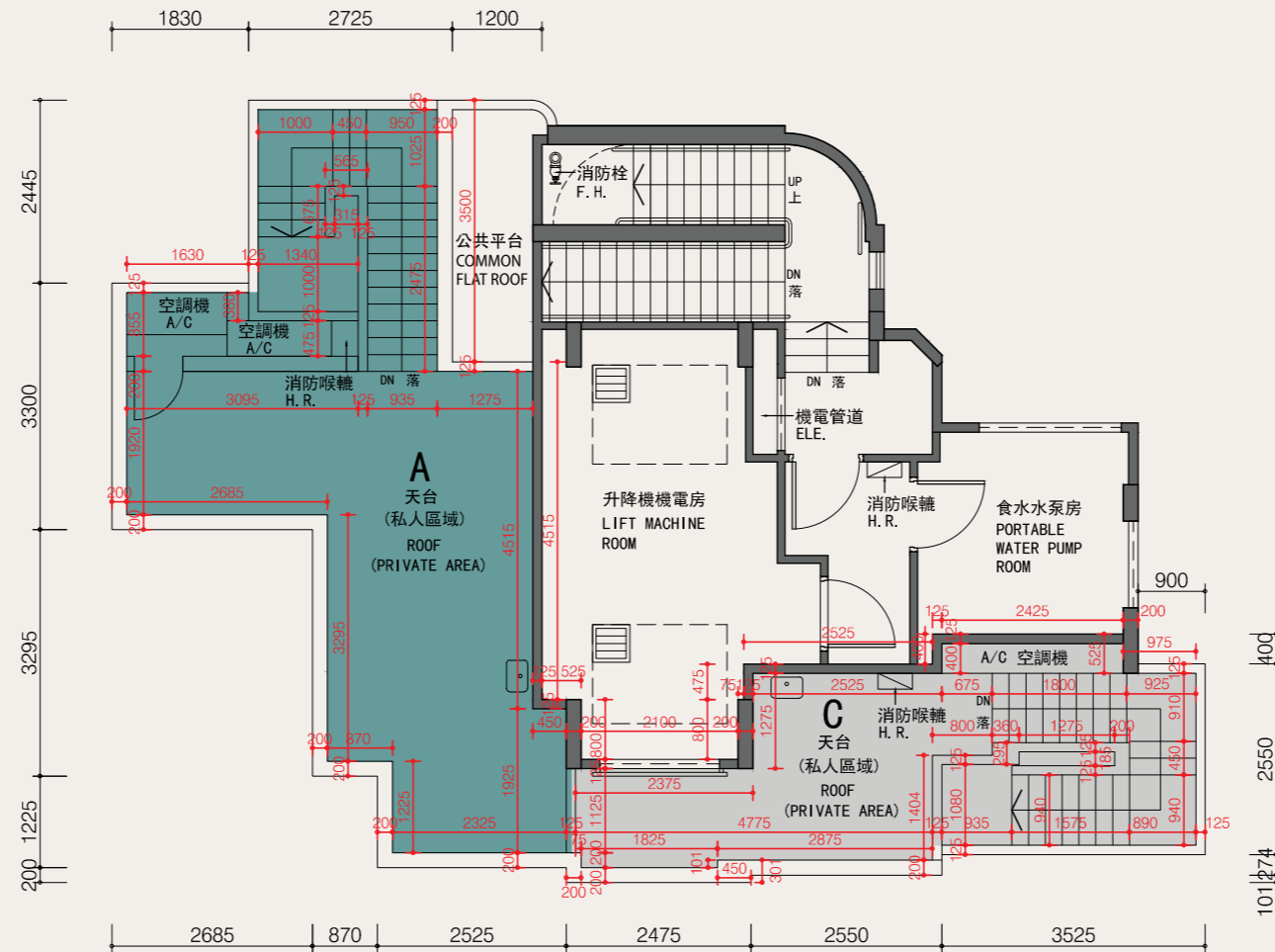
- 平面圖所列的數字為以毫米標示之建築結構尺寸。
- 請參閱本售樓說明書第25頁為住宅物業的樓面平面圖而設之名詞及簡稱之圖例。

FLOOR PLANS OF RESIDENTIAL PROPERTIES IN THE DEVELOPMENT

發展項目的住宅物業的樓面平面圖

MAIN ROOF FLOOR PLAN

天台平面圖



Description 描述	Unit 單位	
	A	C
The thickness of the floor slabs (excluding plaster) of each residential property (mm) 每個住宅物業的樓板 (不包括灰泥) 的厚度 (毫米)	Not Applicable 不適用	Not Applicable 不適用
The floor-to-floor height of each residential property (mm) 每個住宅物業的層與層之間的高度 (毫米)	Not Applicable 不適用	Not Applicable 不適用

The internal areas of the residential properties on the upper floors will generally be slightly larger than those on the lower floors because of the reducing thickness of the structural walls on the upper floors and section. (Not applicable for this Development)

因住宅物業的較高樓層的結構牆的厚度遞減，較高樓層的內部面積，一般比較低樓層的內部面積稍大。(不適用於此發展項目)

Notes:

1. The dimensions in floor plans are all structural dimensions in millimeter.
2. Please refer to page 25 of this sales brochure for legend of the terms and abbreviations used on floor plans of residential properties.

備註:

1. 平面圖所列的數字為以毫米標示之建築結構尺寸。
2. 請參閱本售樓說明書第25頁為住宅物業的樓面平面圖而設之名詞及簡稱之圖例。