

FLOOR PLANS OF RESIDENTIAL PROPERTIES IN THE DEVELOPMENT

發展項目的住宅物業的樓面平面圖

LEGEND OF TERMS AND ABBREVIATION USED ON FLOOR PLANS 平面圖中所使用名詞及簡稱之圖例

A/C PLATFORM = AIR CONDITIONER PLATFORM = 空調機平台

A/C UNIT = AIR CONDITIONER UNIT = 空調機

ARCH. FEATURE = ARCHITECTURAL FEATURE = 建築裝飾

B.R. = BEDROOM = 睡房

BALCONY = 露台

BATH = BATHROOM = 浴室

CANOPY = 簷篷

CARPARK = 停車場

CARPARK FOR VISITOR & ACCESSIBLE PRIVATE CAR = 訪客停車位和暢通易達停車位

CONCRETE PLINTH = 混凝土底座

CONCRETE PLINTH FOR LIGHTNING POLE = 避雷針的混凝土底座

CONCRETE PLINTH FOR TV/FM AERIAL = 電視和調頻天線的混凝土底座

DINING = DINING ROOM = 飯廳

DN = DOWN = 下

DRIVEWAY = 車道

ELECTRIC PANEL = 電的控制板

F.S. INLET, SPRINKLER INLET & SPRINKLER VALVE = FIRE SERVICE INLET, SPRINKLER INLET & SPRINKLER VALVE = 消防處進口、灑水器進口及灑水器閥門

FAMILY = FAMILY ROOM = 家庭房

FILTRATION PLANT ROOM = 過濾泵房

FLAT ROOF = 平台

FOYER = 前廳

GARDEN = 花園

GAS HEATER CABINET = 煤氣熱水爐櫃

GAS METER = 煤氣錶

GLASS BALUSTRADE = 玻璃欄杆

H.R. = HOSE REEL = 消防喉輻

KIT. = KITCHEN = 廚房

L.V. SWITCHING PILLAR RM = LOW VOLTAGE SWITCHING PILLAR ROOM = 低壓開關柱間

LAV. = LAVATORY = 洗手間

LAWN = 草坪

LIFT = 升降機

LIFT LOBBY = 升降機大堂

LIFT SHAFT = 升降機槽

LIVING = LIVING ROOM = 客廳

M.B.R. = MASTER BEDROOM = 主人睡房

MAIL BOX = 信箱

MAIN METER RM. = MAIN METER ROOM = 電掣房

MASTER METER ROOM (F.S. WATER) = MASTER METER ROOM (FIRE SERVICE WATER) = 主儀表室 (消防處用水)

MASTER METER ROOM (POTABLE WATER) = 主儀表室 (飲用水)

OPEN PASSAGE = 露天通道

OUTDOOR A/C UNIT WITH CONCRETE PLINTH = OUTDOOR AIR CONDITIONER UNIT WITH CONCRETE PLINTH = 帶混凝土底座的室外空調機組

PLANTER = 花槽

POOL TERRACE = 泳池池畔

ROOF = 天台

STORE = STORE ROOM = 儲物室

SWIMMING POOL = 游泳池

SWITCH ROOM = 電掣房

TOWN GAS CABINET = 煤氣櫃

UP = 上

UTILITY = 工作間

WALK IN CLOSET = 衣帽間

FLOOR PLANS OF RESIDENTIAL PROPERTIES IN THE DEVELOPMENT

發展項目的住宅物業的樓面平面圖

House A
洋房A

Notes :

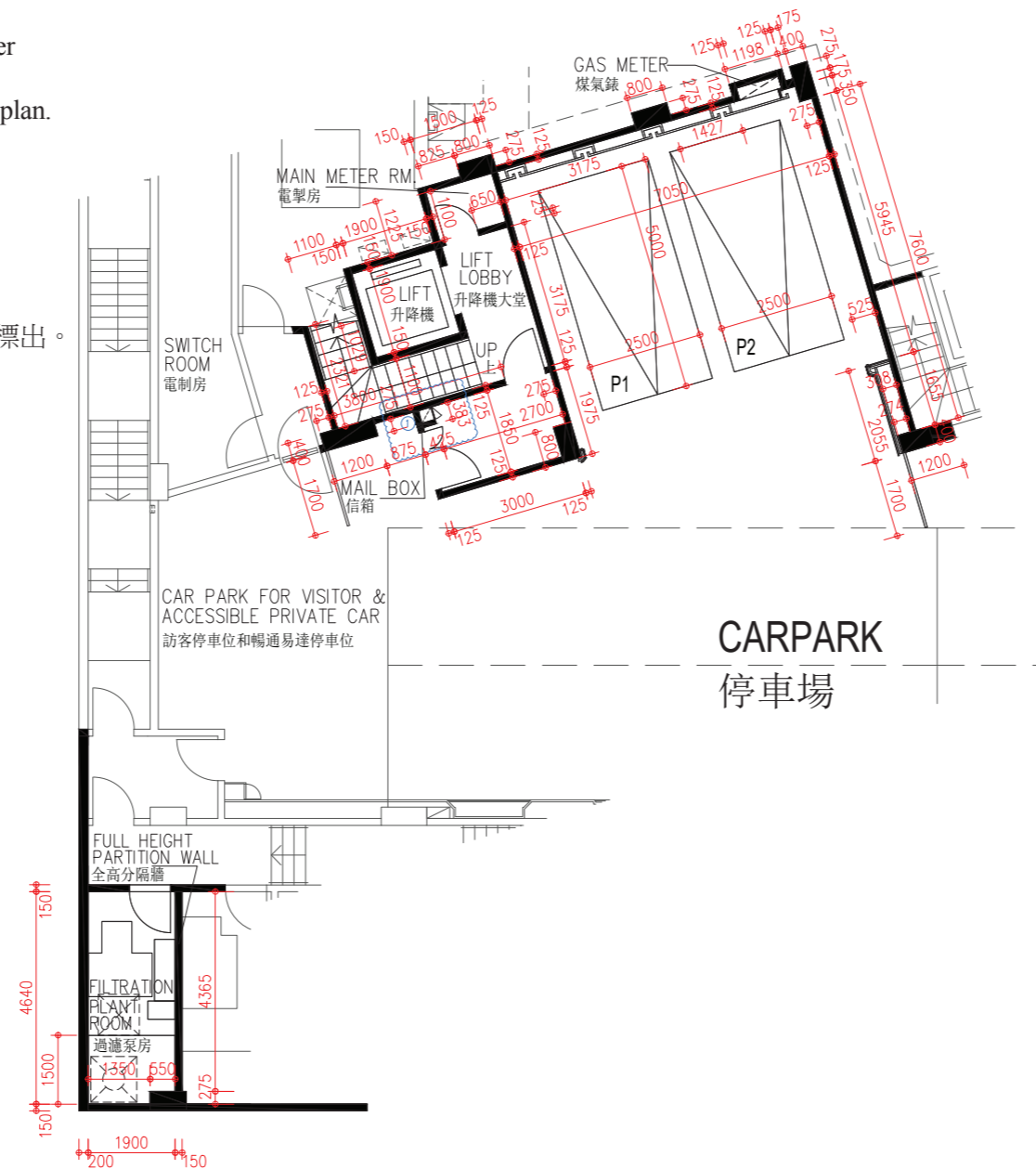
This part of House A has been altered by way of exempted works under the Buildings Ordinance after completion of the Development.
The approximate locations of the alterations are indicated in this floor plan.
The alteration works are as follows:

(1) Alteration of mailbox design

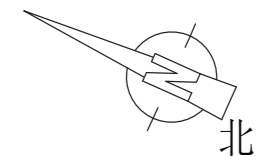
備註：

洋房A此部份因在發展項目落成後進行獲《建築物條例》豁免的工程而有所改動。該等改動大概位置於本樓面平面圖中標出。該等改動如下：

(1) 更改信箱設計



Lower Ground Floor AS-IS Plan
低層地下現狀間隔平面圖

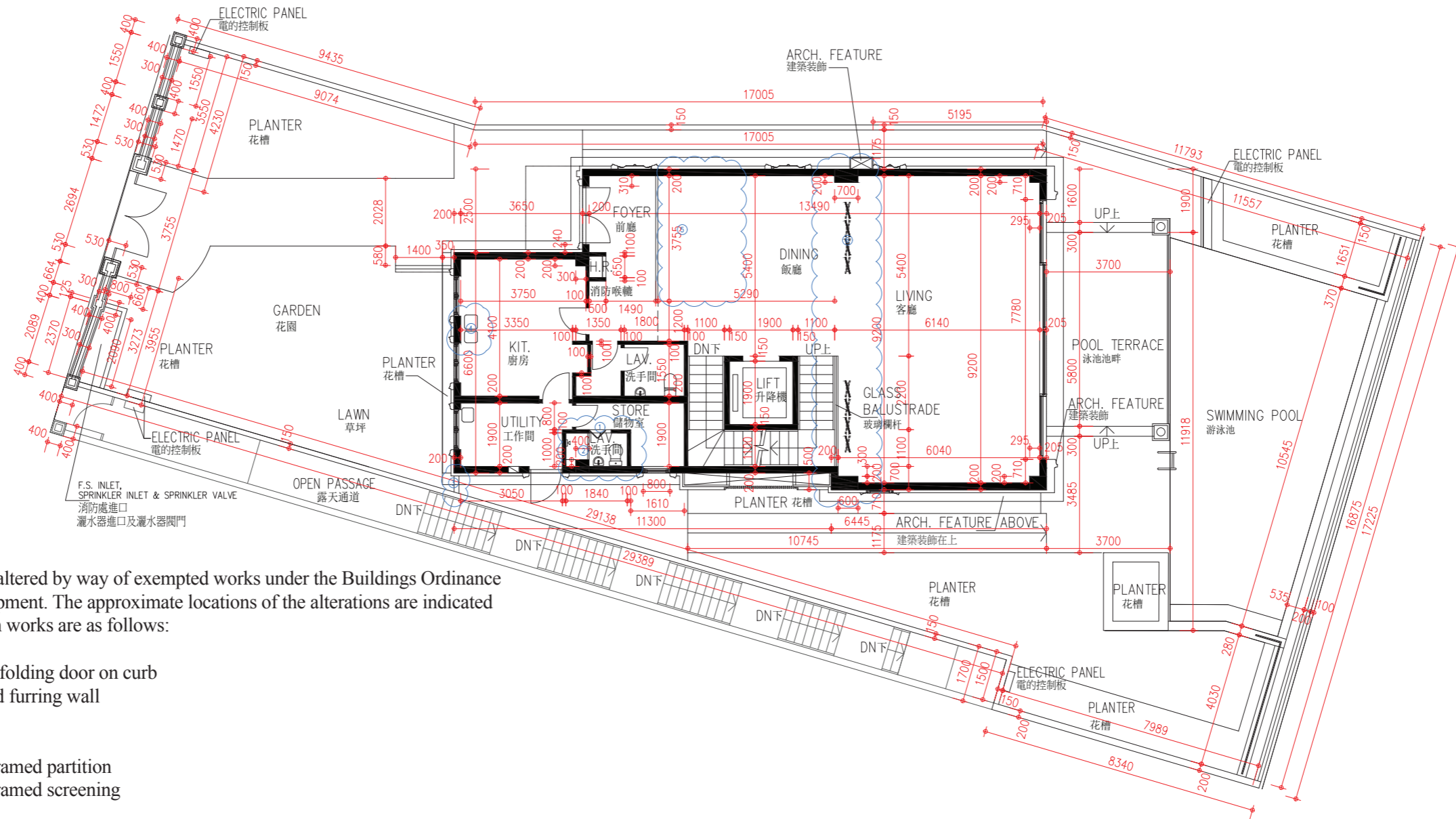


Scale 比例：0M 5M (米)

FLOOR PLANS OF RESIDENTIAL PROPERTIES IN THE DEVELOPMENT

發展項目的住宅物業的樓面平面圖

House A
洋房A



Notes :

This part of House A has been altered by way of exempted works under the Buildings Ordinance after completion of the Development. The approximate locations of the alterations are indicated in this floor plan. The alteration works are as follows:

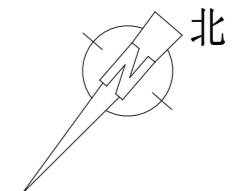
- (1) Replacing swing door with folding door on curb
- (2) Erection of shower curb and furring wall
- (3) Erection of planter wall
- (4) Alteration of kitchen sink
- (5) Erection of internal metal framed partition
- (6) Erection of internal metal framed screening

備註：

洋房A此部份因在發展項目落成後進行獲《建築物條例》豁免的工程而有所改動。該等改動大概位置於本樓面平面圖中標出。該等改動如下：

- (1) 以房間緣石上安裝折疊門取代掩門
- (2) 加設淋浴間緣石及飾面牆
- (3) 加設花槽牆
- (4) 更改廚房水槽
- (5) 加設金屬框間隔牆
- (6) 加設金屬框間隔屏風

Ground Floor AS-IS Plan
地下現狀間隔平面圖

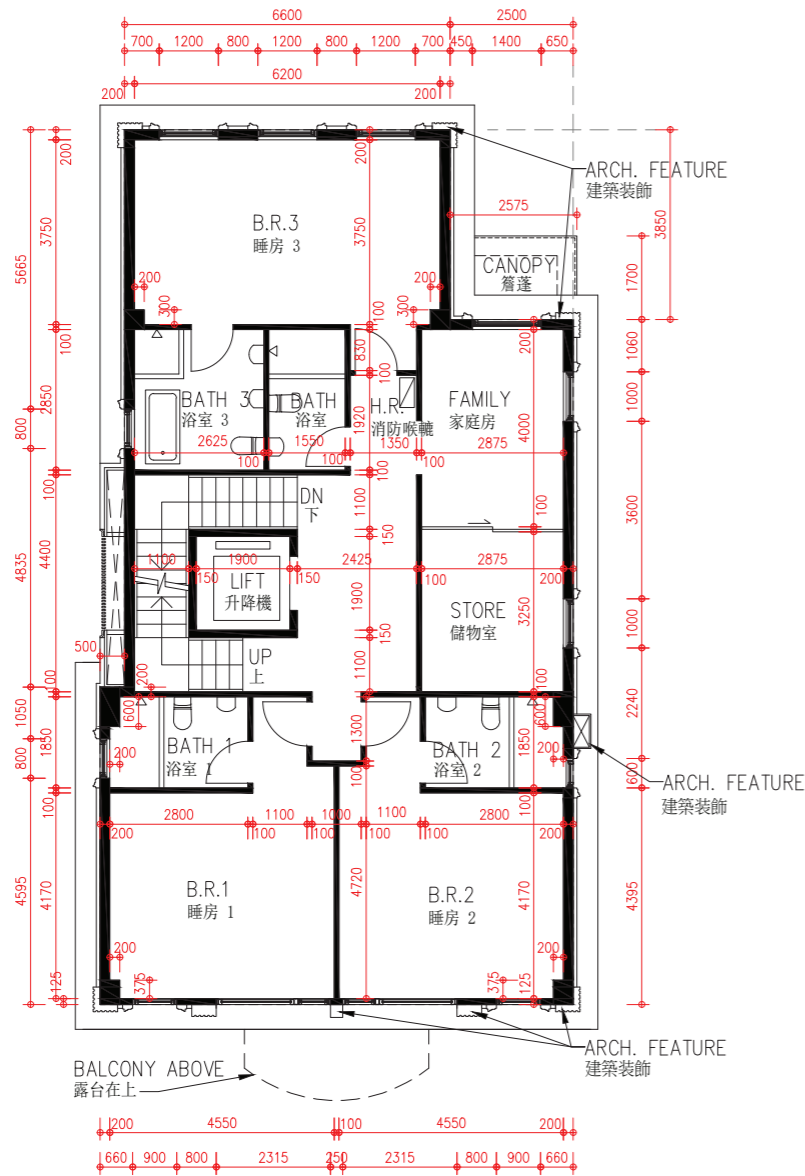


Scale 比例：0M 5M (米)

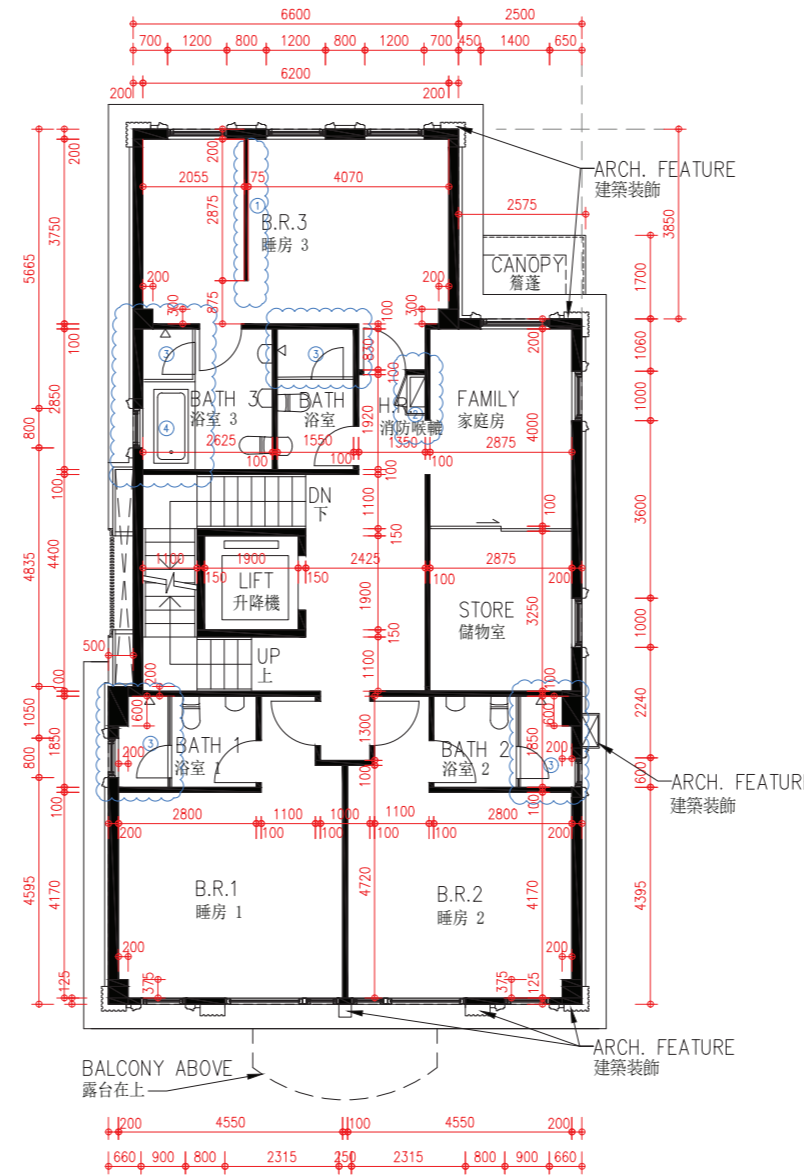
FLOOR PLANS OF RESIDENTIAL PROPERTIES IN THE DEVELOPMENT

發展項目的住宅物業的樓面平面圖

House A
洋房A



1st Floor Plan
一樓平面圖



1st Floor AS-IS Plan
一樓現狀間隔平面圖

Notes :

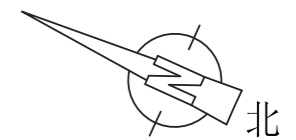
This part of House A has been altered by way of exempted works under the Buildings Ordinance after completion of the Development. The approximate locations of the alterations are indicated in this floor plan. The alteration works are as follows:

- (1) Erection of internal partition wall
- (2) Installation of furring wall for hose reel cabinet
- (3) Erection of shower cubicle with glass partition and glass door
- (4) Alteration of bathtub

備註：

洋房A此部份因在發展項目落成後進行獲《建築物條例》豁免的工程而有所改動。該等改動大概位置於本樓面平面圖中標出。該等改動如下：

- (1) 加設間隔牆
- (2) 安裝消防喉轆間隔飾面牆
- (3) 加設淋浴間玻璃牆及玻璃門
- (4) 更換浴缸

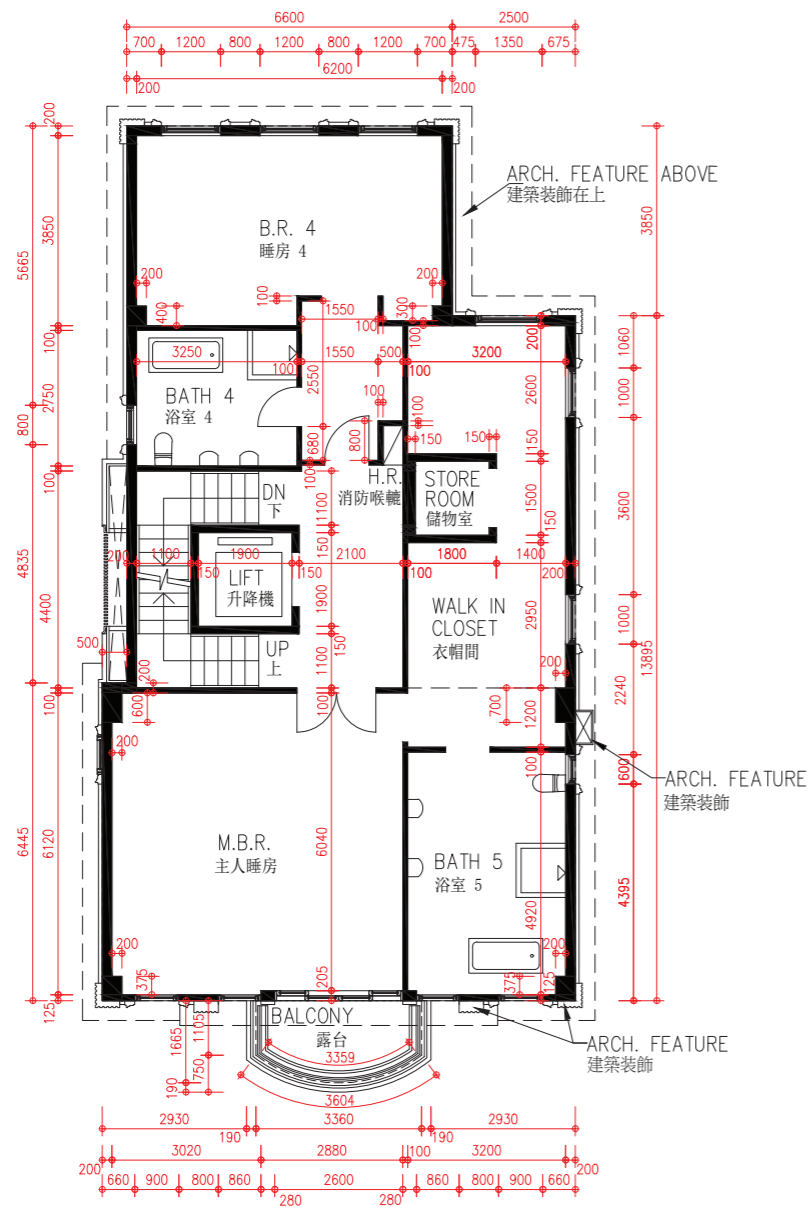


Scale 比例：0M 5M (米)

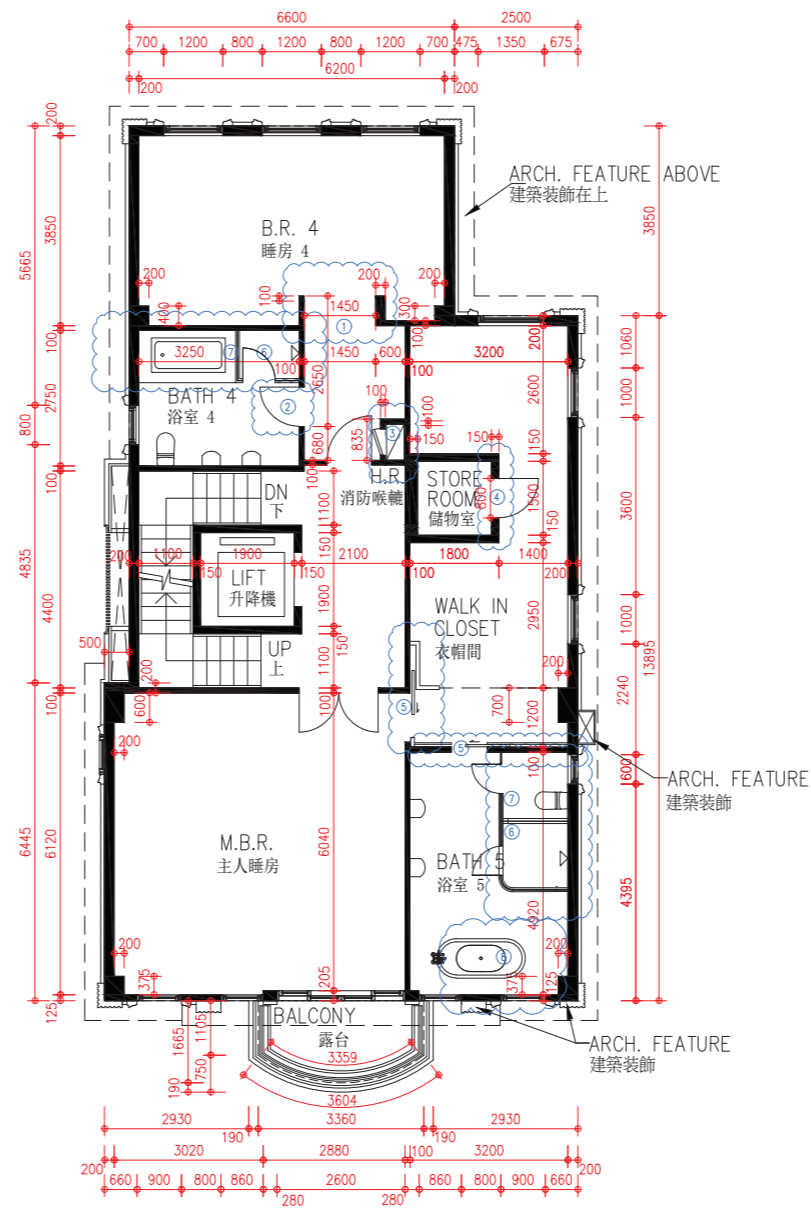
FLOOR PLANS OF RESIDENTIAL PROPERTIES IN THE DEVELOPMENT

發展項目的住宅物業的樓面平面圖

House A
洋房A



2nd Floor Plan
二樓平面圖



2nd Floor AS-IS Plan
二樓現狀間隔平面圖

Notes :

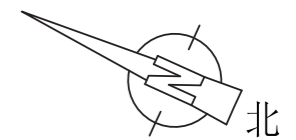
This part of House A has been altered by way of exempted works under the Buildings Ordinance after completion of the Development. The approximate locations of the alterations are indicated in this floor plan. The alteration works are as follows:

- (1) Removal part of internal partition wall and installation of furring wall
- (2) Change of door swing direction
- (3) Alteration of internal partition wall and installation of access panel for hose reel cabinet
- (4) Extension of internal partition wall and installation of swing door
- (5) Erection of furring wall and installation of sliding door
- (6) Erection of shower cubicle with glass partition and glass door
- (7) Erection of toilet cubicle with glass partition and glass door
- (8) Alteration of bathtub

備註：

洋房A此部份因在發展項目落成後進行獲《建築物條例》豁免的工程而有所改動。該等改動大概位置於本樓面平面圖中標出。該等改動如下：

- (1) 拆除部份間隔牆及安裝飾面牆以加厚部份牆身
- (2) 更改掩門開啟方向
- (3) 更改消防喉轆間隔牆及加設開口掩門
- (4) 延伸間隔牆及安裝掩門
- (5) 加設飾面牆及安裝趟門
- (6) 加設淋浴間玻璃牆及玻璃門
- (7) 加設廁所隔間玻璃牆及玻璃門
- (8) 更換浴缸

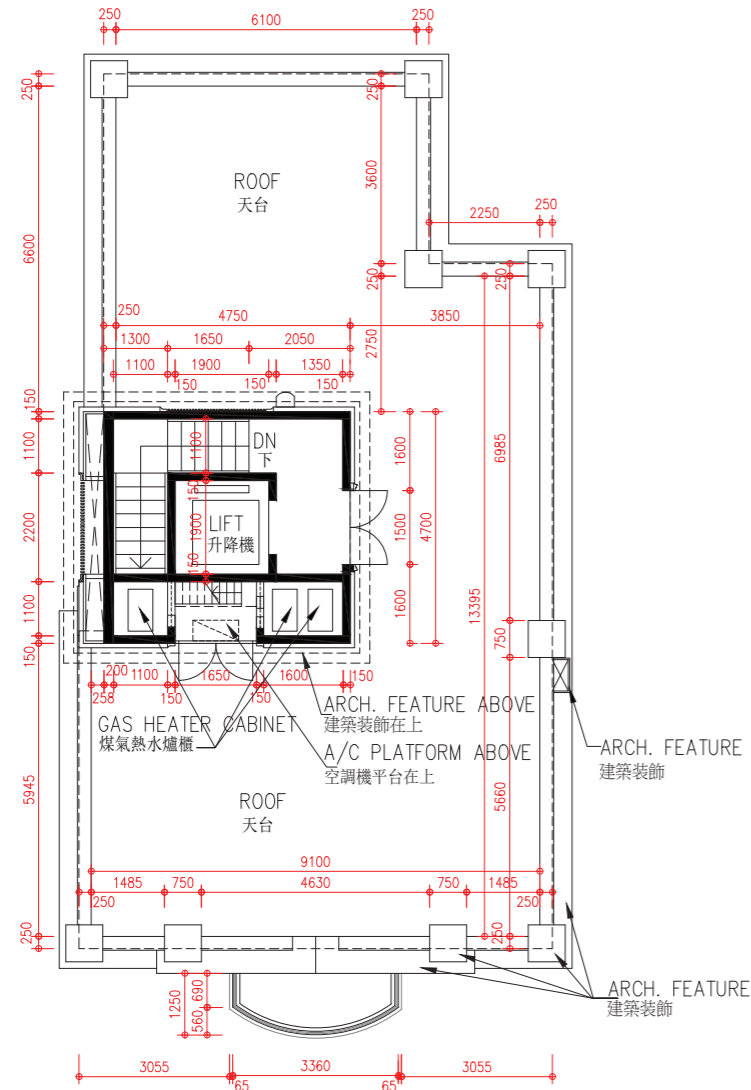


Scale 比例：0M 5M (米)

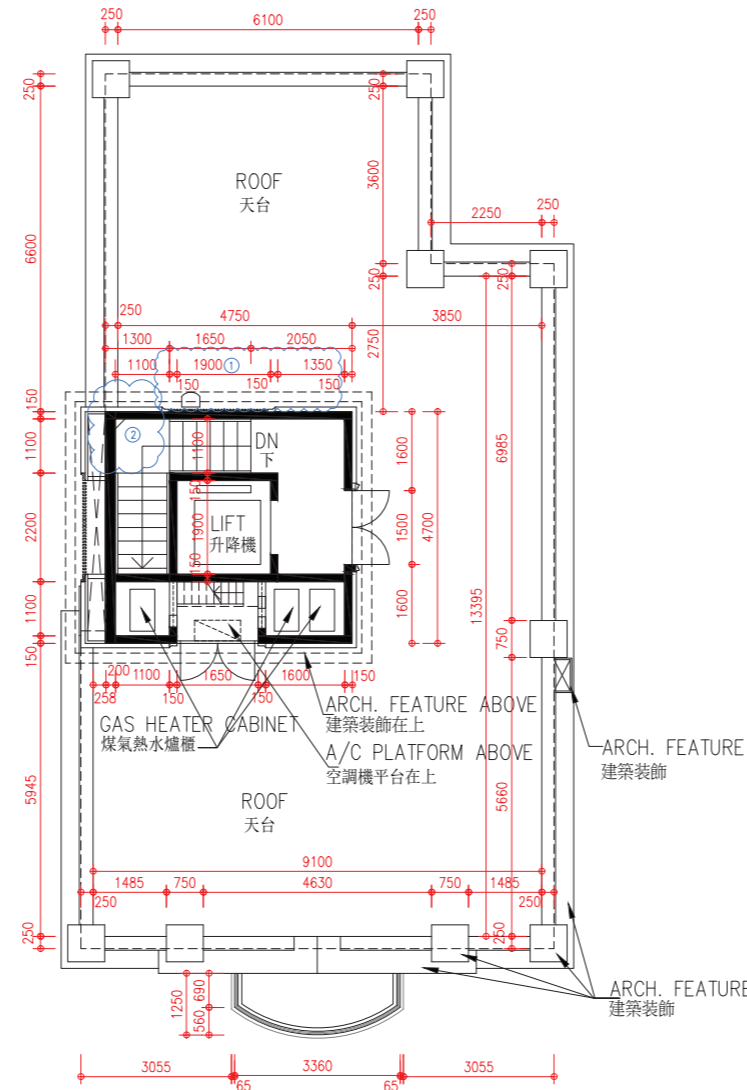
FLOOR PLANS OF RESIDENTIAL PROPERTIES IN THE DEVELOPMENT

發展項目的住宅物業的樓面平面圖

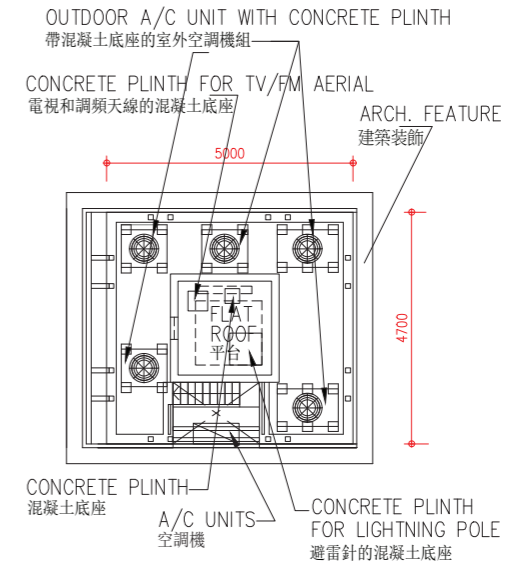
House A
洋房A



Roof Plan
天台平面圖



Roof AS-IS Plan
天台現狀間隔平面圖



Upper Roof Plan
高層天台平面圖

Notes :

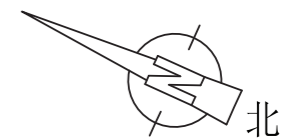
This part of House A has been altered by way of exempted works under the Buildings Ordinance after completion of the Development. The approximate locations of the alterations are indicated in this floor plan. The alteration works are as follows:

- (1) Relocation of sink
- (2) Erection of furring wall

備註：

洋房A此部份因在發展項目落成後進行獲《建築物條例》豁免的工程而有所改動。該等改動大概位置於本樓面平面圖中標出。該等改動如下：

- (1)更改水槽位置
- (2) 加設飾面牆



Scale 比例：0M 5M (米)

Notes:
For the location of the roof, it was specified as flat roof in the general building plans of the Development approved by the Building Authority. In practice, it is a roof and its area is calculated under the roof.

備註：
有關天台的位置在該發展項目經建築事務監督批准的建築圖則上列為平台，實際上其用途為天台，其面積將以天台計算。

FLOOR PLANS OF RESIDENTIAL PROPERTIES IN THE DEVELOPMENT

發展項目的住宅物業的樓面平面圖

House A
洋房A

Floor 樓層	Thickness of Floor Slabs (Excluding Plaster) of House A (mm) 洋房A的樓板(不包括灰泥)的厚度(毫米)	Floor-to-Floor Height of House A (mm) 洋房A層與層之間的高度(毫米)
LG/F 低層地下	125, 150, 200	3650, 5200
G/F 地下	100, 125, 150, 175, 225	4500
1/F 1樓	125, 175, 225	3500
2/F 2樓	100, 125, 150, 175, 225	3500, 3750
R/F 天台	125	3250

Notes:

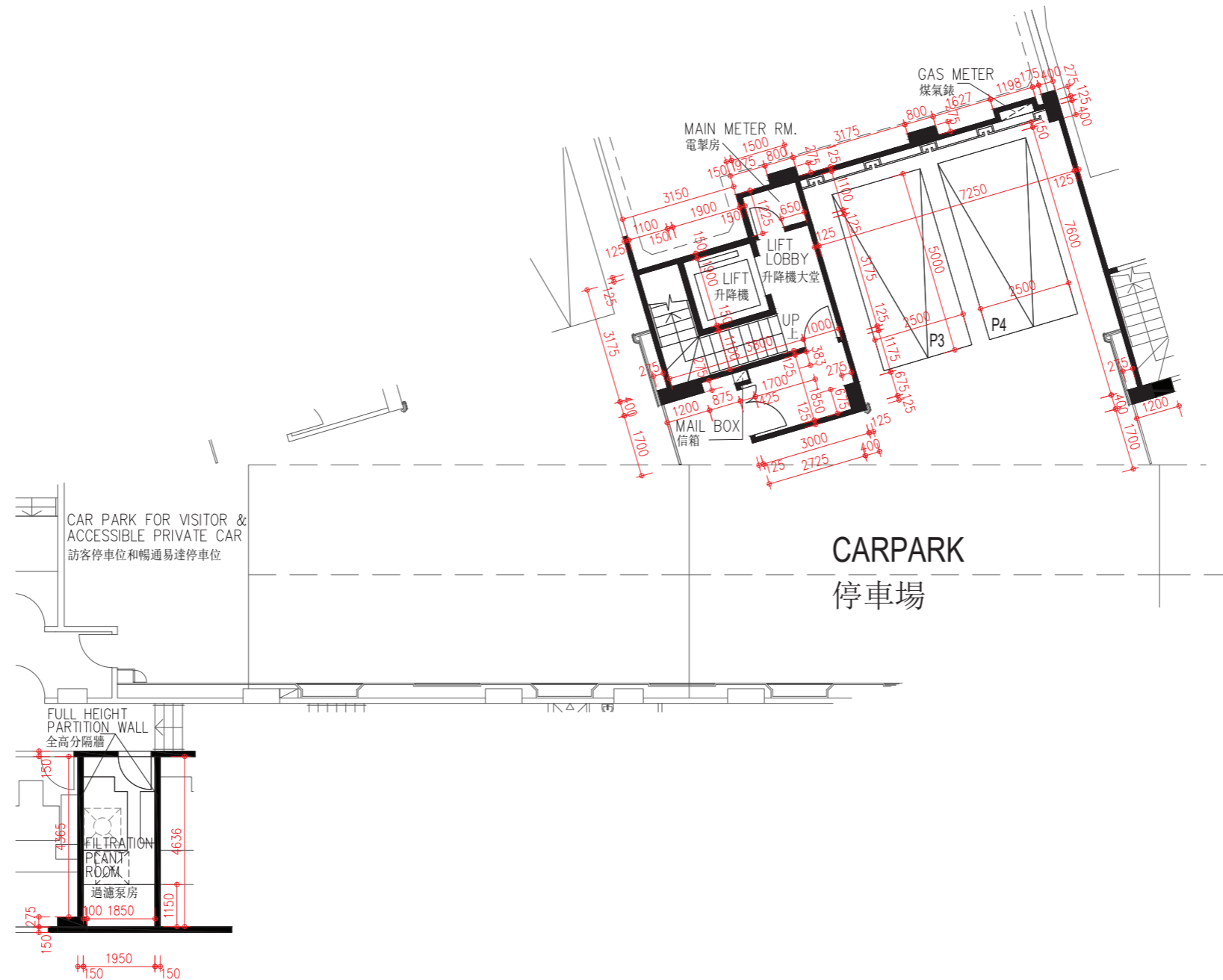
1. The internal areas of the residential properties on the upper floors will generally be slightly larger than those on the lower floors because of the reducing thickness of the structural walls on the upper floors.
2. The dimensions in floor plans are all in millimeter.
3. Saleable area includes the areas of the filtration plant room, main meter room and relevant lift lobby at LG/F.
4. The symbols of fittings and fixtures shown on the floor plans such as sink units, bathtubs, showerheads, toilets, drain points, cabinets, kitchen cabinets, doors, partitions, furring walls etc. are indications of their approximate locations only and not indications of their actual size, designs and shapes.

備註:

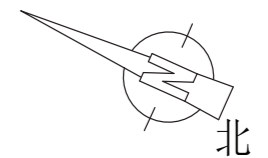
1. 因住宅物業的較高樓層的結構牆的厚度遞減，較高樓層的内部面積，一般比較低樓層的内部面積稍大。
2. 平面圖所列之數字為以毫米標示之尺寸。
3. 實用面積包括低層地下的泳池過濾泵房、電掣房及相關升降機大堂。
4. 平面圖上所顯示的形象裝置符號，例如洗滌盆、浴缸、沐浴花灑、座廁、去水位、櫃、廚櫃、門、間隔、飾面牆等只供展示其大約位置而非展示其實際大小、設計及形狀。

FLOOR PLANS OF RESIDENTIAL PROPERTIES IN THE DEVELOPMENT
 發展項目的住宅物業的樓面平面圖

House B
 洋房 B



Lower Ground Floor Plan
 低層地下平面圖



Scale 比例: 0M 5M (米)

FLOOR PLANS OF RESIDENTIAL PROPERTIES IN THE DEVELOPMENT

發展項目的住宅物業的樓面平面圖

House B
洋房 B

Notes :

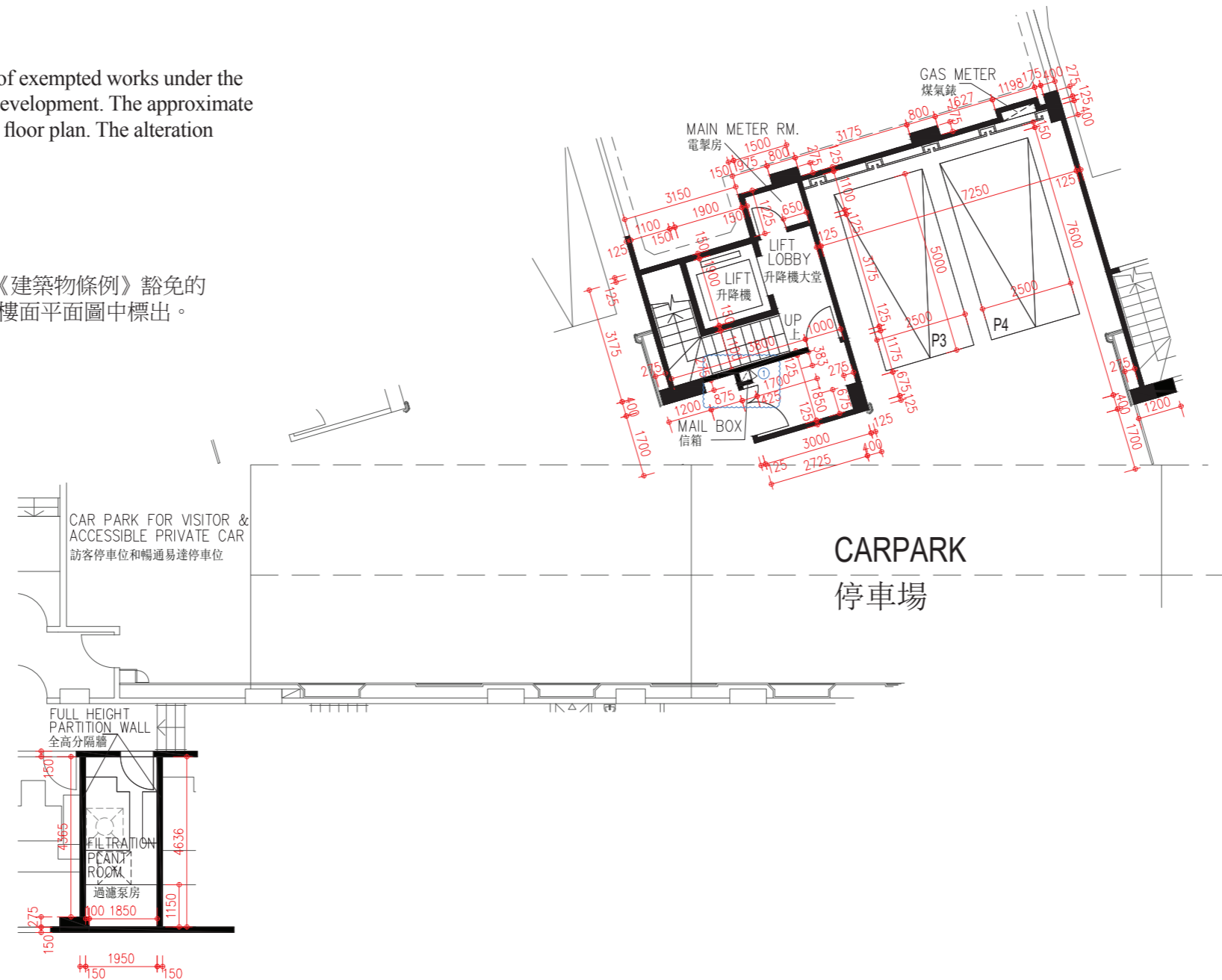
This part of House B has been altered by way of exempted works under the Buildings Ordinance after completion of the Development. The approximate locations of the alterations are indicated in this floor plan. The alteration works are as follows:

(1) Alteration of mailbox design

備註：

洋房B此部份因在發展項目落成後進行獲《建築物條例》豁免的工程而有所改動。該等改動大概位置於本樓面平面圖中標出。該等改動如下：

(1) 更改信箱設計

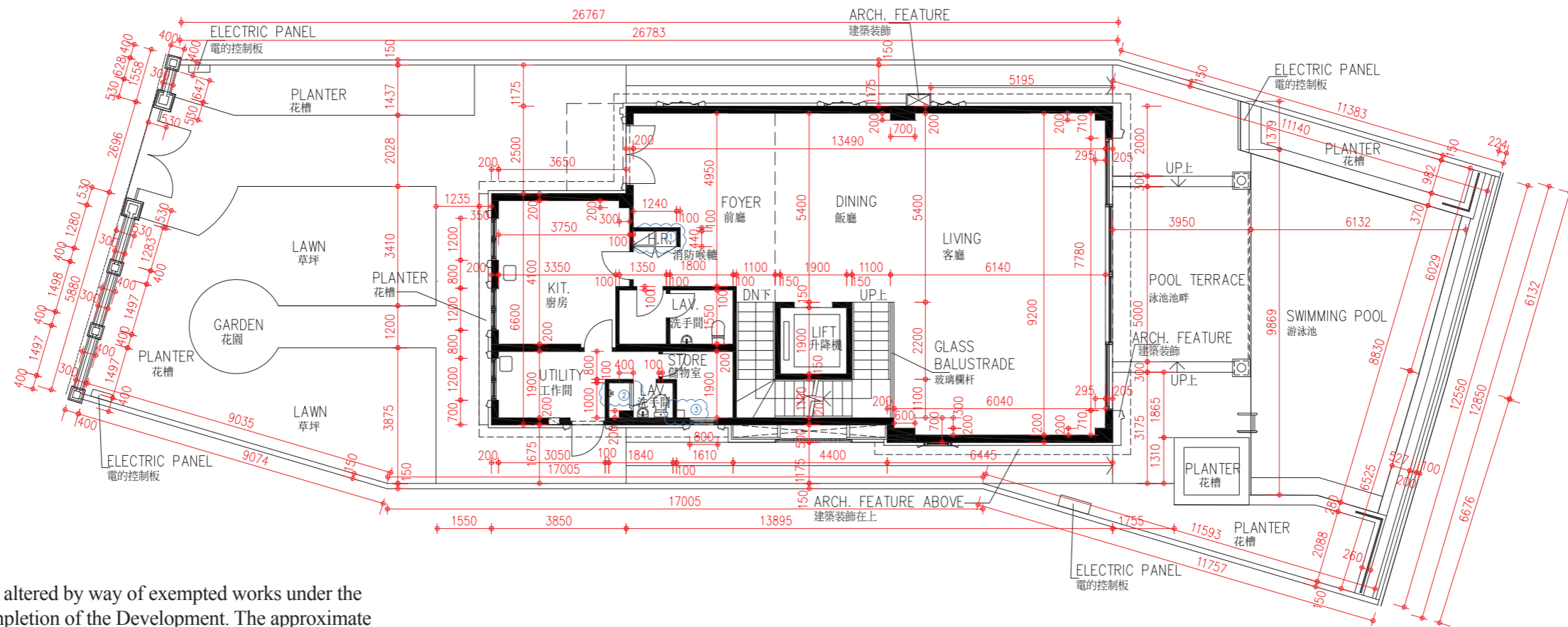


Lower Ground Floor AS-IS Plan
低層地下現狀間隔平面圖

FLOOR PLANS OF RESIDENTIAL PROPERTIES IN THE DEVELOPMENT

發展項目的住宅物業的樓面平面圖

House B
洋房B



Notes :

This part of House B has been altered by way of exempted works under the Buildings Ordinance after completion of the Development. The approximate locations of the alterations are indicated in this floor plan. The alteration works are as follows:

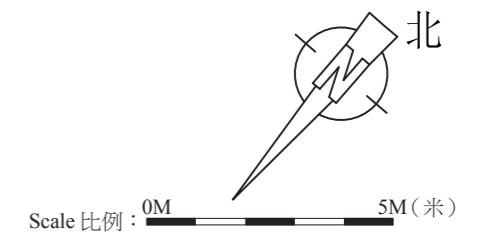
- (1) Installation of access panel for hose reel cabinet
- (2) Erection of shower curb
- (3) Erection of furring wall

備註：

洋房B此部份因在發展項目落成後進行獲《建築物條例》豁免的工程而有所改動。該等改動大概位置於本樓面平面圖中標出。該等改動如下：

- (1) 安裝消防喉轆開口掩門
- (2) 加設淋浴間緣石
- (3) 加設飾面牆

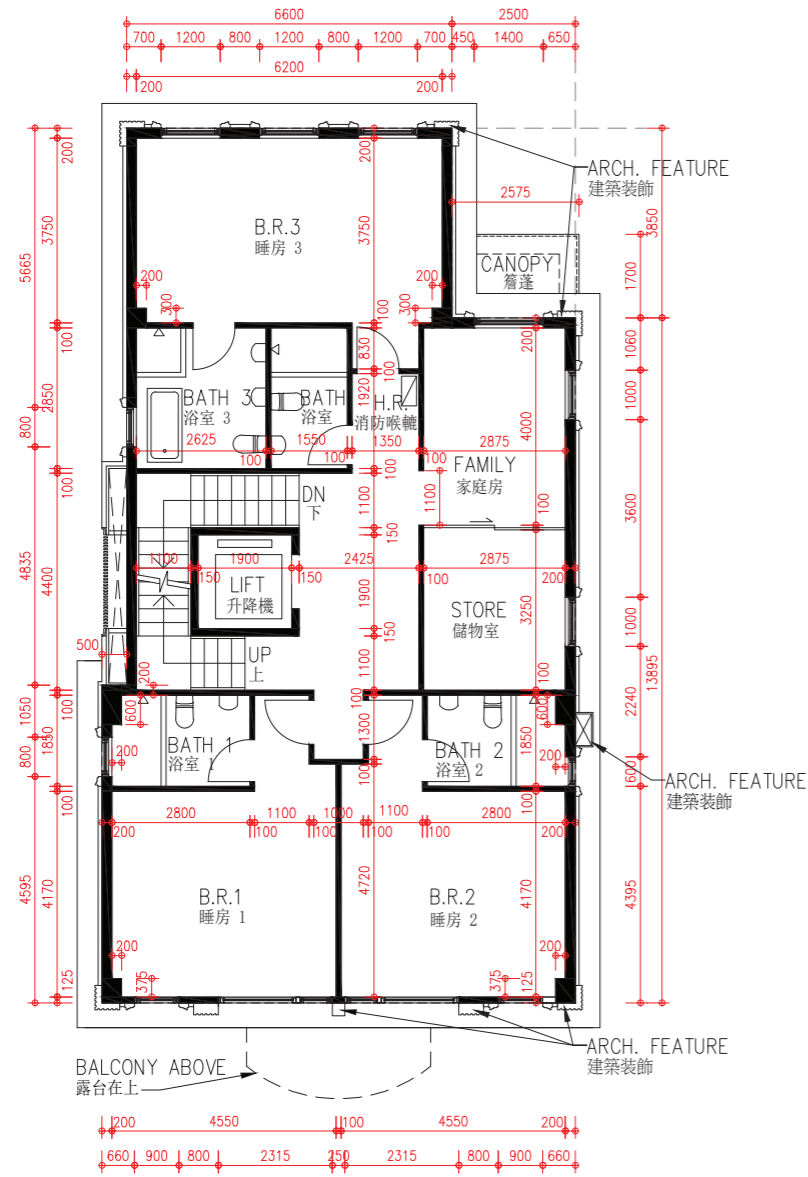
Ground Floor AS-IS Plan
地下現狀間隔平面圖



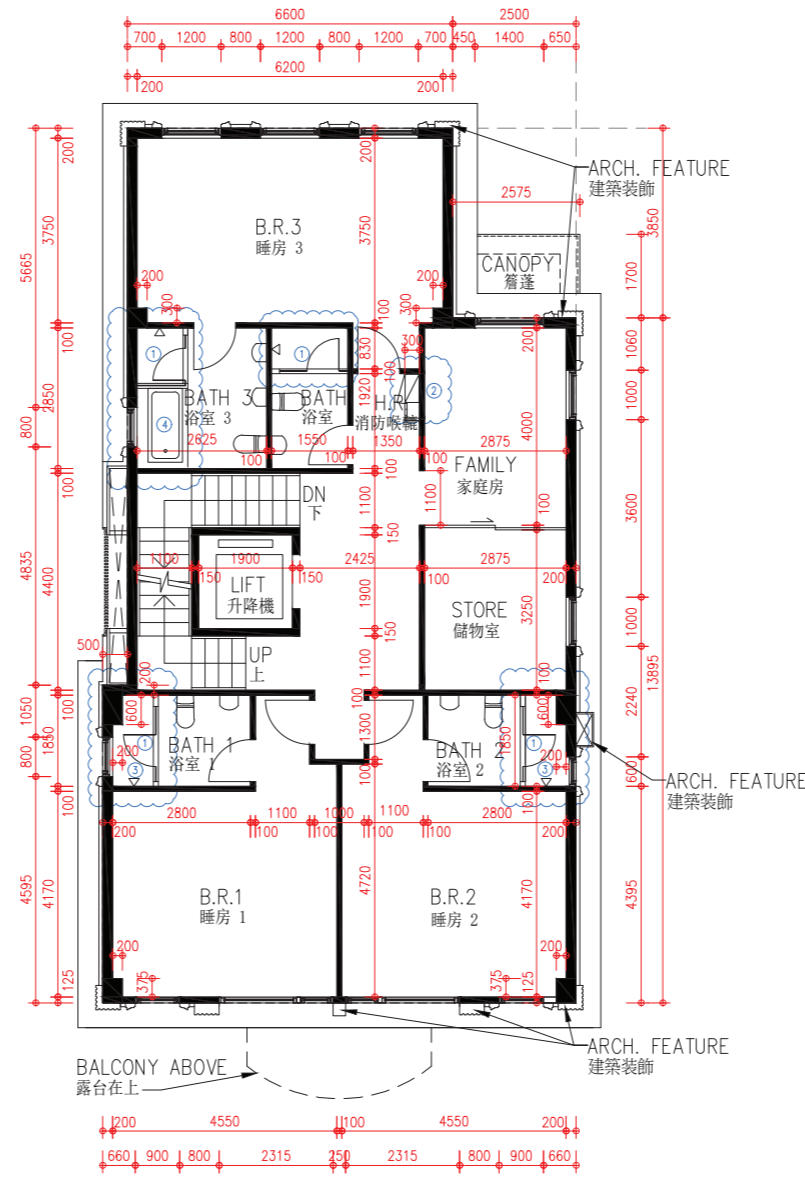
FLOOR PLANS OF RESIDENTIAL PROPERTIES IN THE DEVELOPMENT

發展項目的住宅物業的樓面平面圖

House B
洋房 B



1st Floor Plan
一樓平面圖



1st Floor AS-IS Plan
一樓現狀間隔平面圖

Notes :

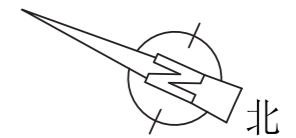
This part of House B has been altered by way of exempted works under the Buildings Ordinance after completion of the Development. The approximate locations of the alterations are indicated in this floor plan. The alteration works are as follows:

- (1) Erection of shower cubicle with glass partition and glass door
- (2) Erection of furring wall and access panel for hose reel cabinet
- (3) Relocation of shower faucet
- (4) Alteration of bathtub

備註：

洋房B此部份因在發展項目落成後進行獲《建築物條例》豁免的工程而有所改動。該等改動大概位置於本樓面平面圖中標出。該等改動如下：

- (1) 加設淋浴間玻璃牆及玻璃門
- (2) 加設消防喉轆間隔飾面牆及開口掩門
- (3) 更改淋浴器位置
- (4) 更換浴缸

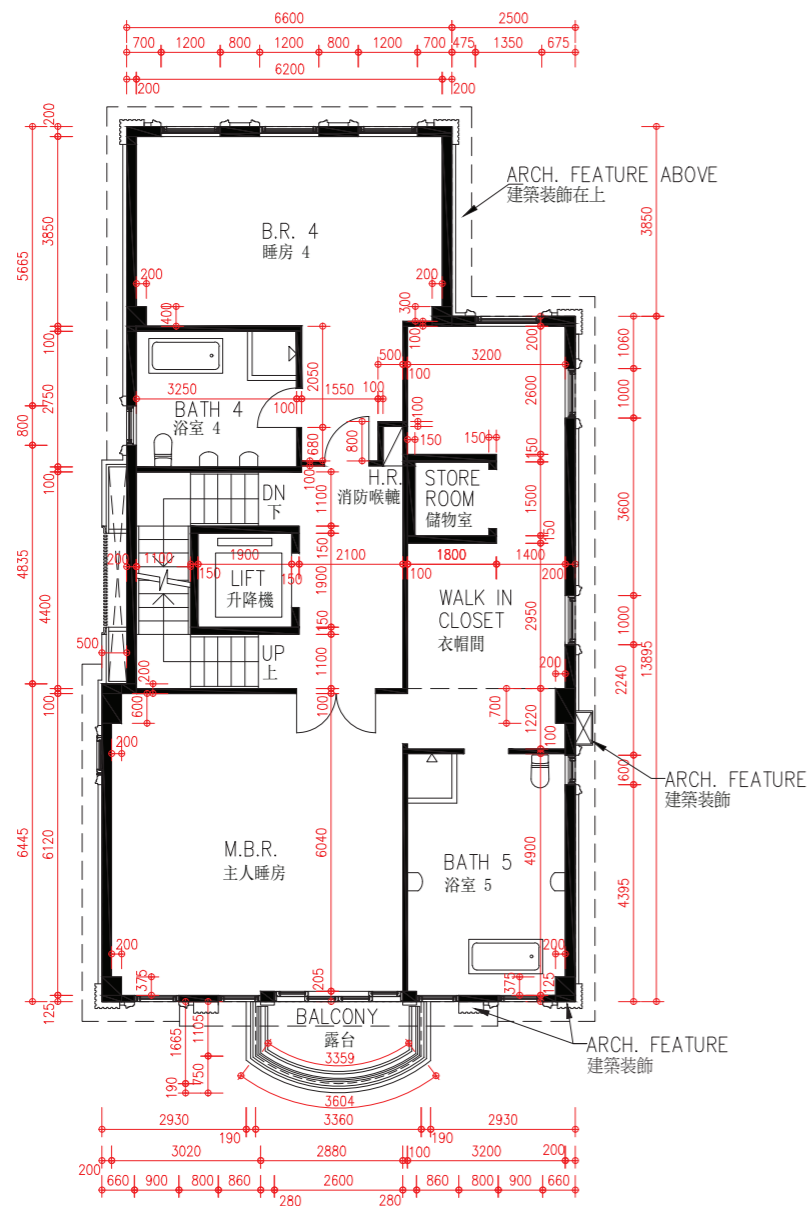


Scale 比例 : 0M 5M (米)

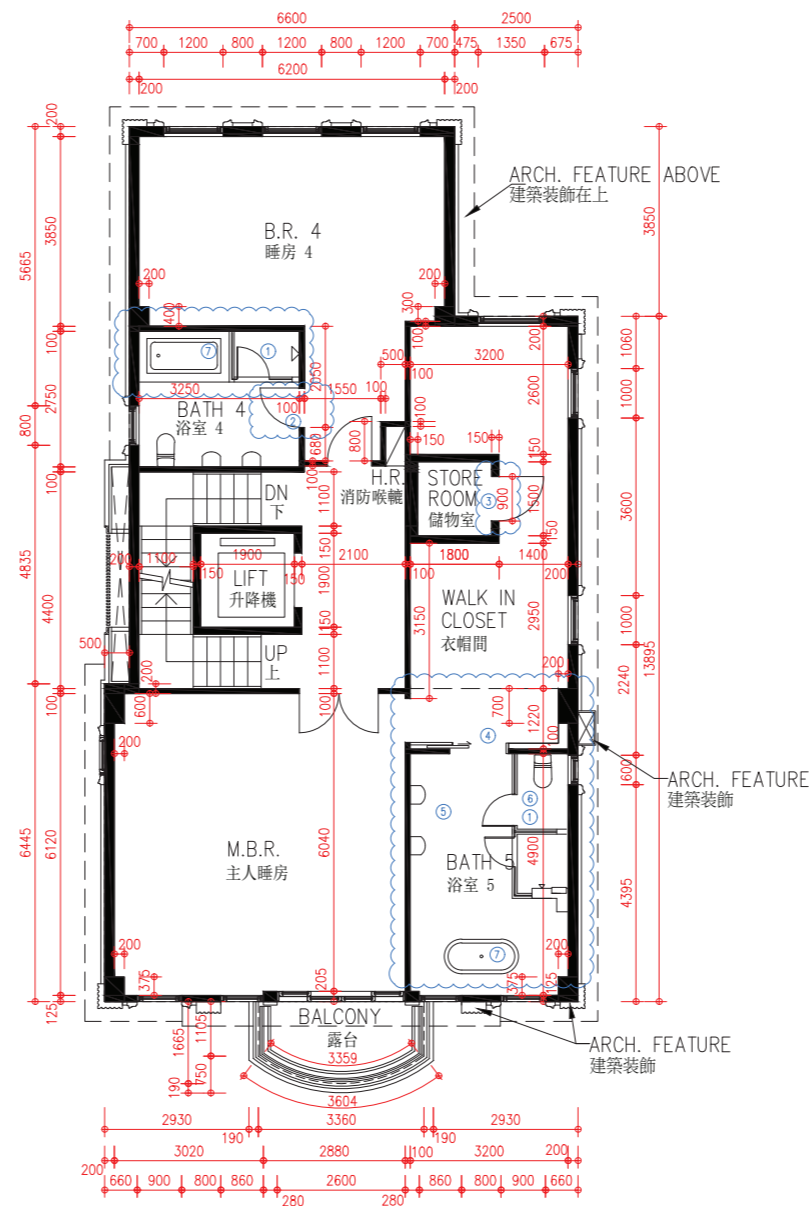
FLOOR PLANS OF RESIDENTIAL PROPERTIES IN THE DEVELOPMENT

發展項目的住宅物業的樓面平面圖

House B
洋房 B



2nd Floor Plan
二樓平面圖



2nd Floor AS-IS Plan
二樓現狀間隔平面圖

Notes :

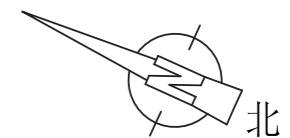
This part of House B has been altered by way of exempted works under the Buildings Ordinance after completion of the Development. The approximate locations of the alterations are indicated in this floor plan. The alteration works are as follows:

- (1) Erection of shower cubicle with glass partition and glass door
- (2) Change of door swing direction
- (3) Extension of internal partition wall and installation of swing door
- (4) Installation of sliding door
- (5) Relocation of shower faucet and wash basins
- (6) Erection of toilet cubicle with glass partition and glass door
- (7) Alteration of bathtub

備註：

洋房B此部份因在發展項目落成後進行獲《建築物條例》豁免的工程而有所改動。該等改動大概位置於本樓面平面圖中標出。該等改動如下：

- (1) 加設淋浴間玻璃牆及玻璃門
- (2) 更改掩門開啟方向
- (3) 延伸間隔牆及安裝掩門
- (4) 安裝趟門
- (5) 更改淋浴器及洗手盆位置
- (6) 加設廁所隔間玻璃牆及玻璃門
- (7) 更換浴缸

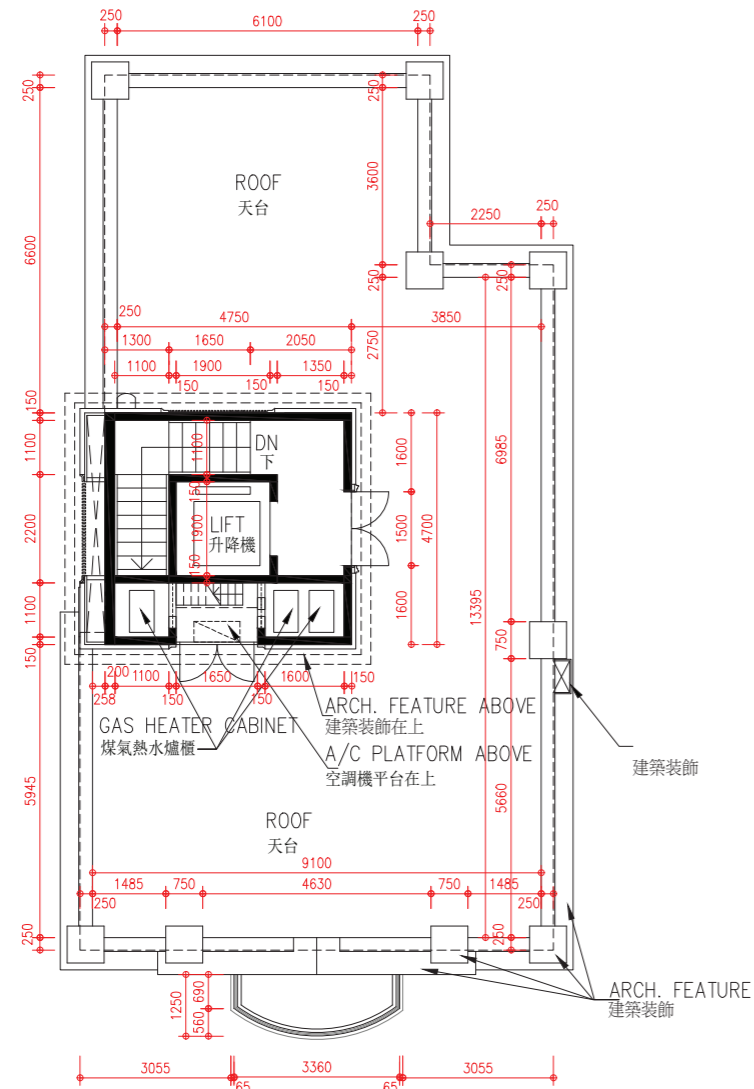


Scale 比例：0M 5M (米)

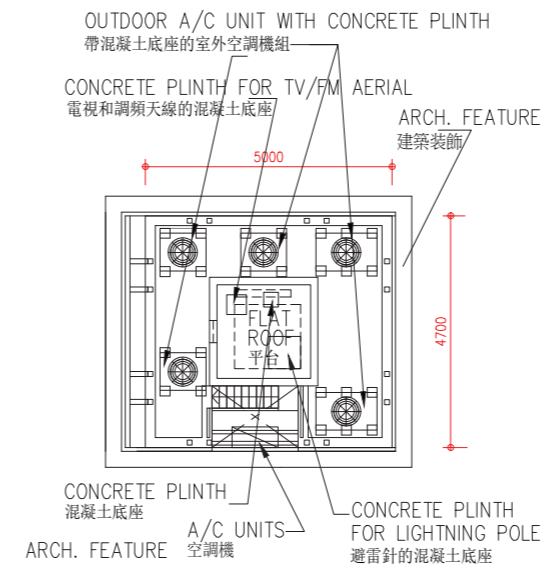
FLOOR PLANS OF RESIDENTIAL PROPERTIES IN THE DEVELOPMENT

發展項目的住宅物業的樓面平面圖

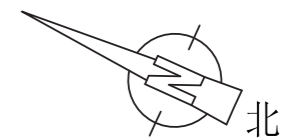
House B
洋房 B



Roof Plan
天台平面圖



Upper Roof Plan
高層天台平面圖



Scale 比例: 0M 5M (米)

Notes:
For the location of the roof, it was specified as flat roof in the general building plans of the Development approved by the Building Authority. In practice, it is a roof and its area is calculated under the roof.

備註:
有關天台的位置在該發展項目經建築事務監督批准的建築圖則上列為平台，實際上其用途為天台，其面積將以天台計算。

FLOOR PLANS OF RESIDENTIAL PROPERTIES IN THE DEVELOPMENT

發展項目的住宅物業的樓面平面圖

House B 洋房B

Floor 樓層	Thickness of Floor Slabs (Excluding Plaster) of House B (mm) 洋房B的樓板(不包括灰泥)的厚度(毫米)	Floor-to-Floor Height of House B (mm) 洋房B層與層之間的高度(毫米)
LG/F 低層地下	125, 150, 200	3650, 5200
G/F 地下	100, 125, 150, 175, 225	4500
1/F 1樓	125, 175, 225	3500
2/F 2樓	100, 125, 150, 175, 225	3500, 3750
R/F 天台	125	3250

Notes:

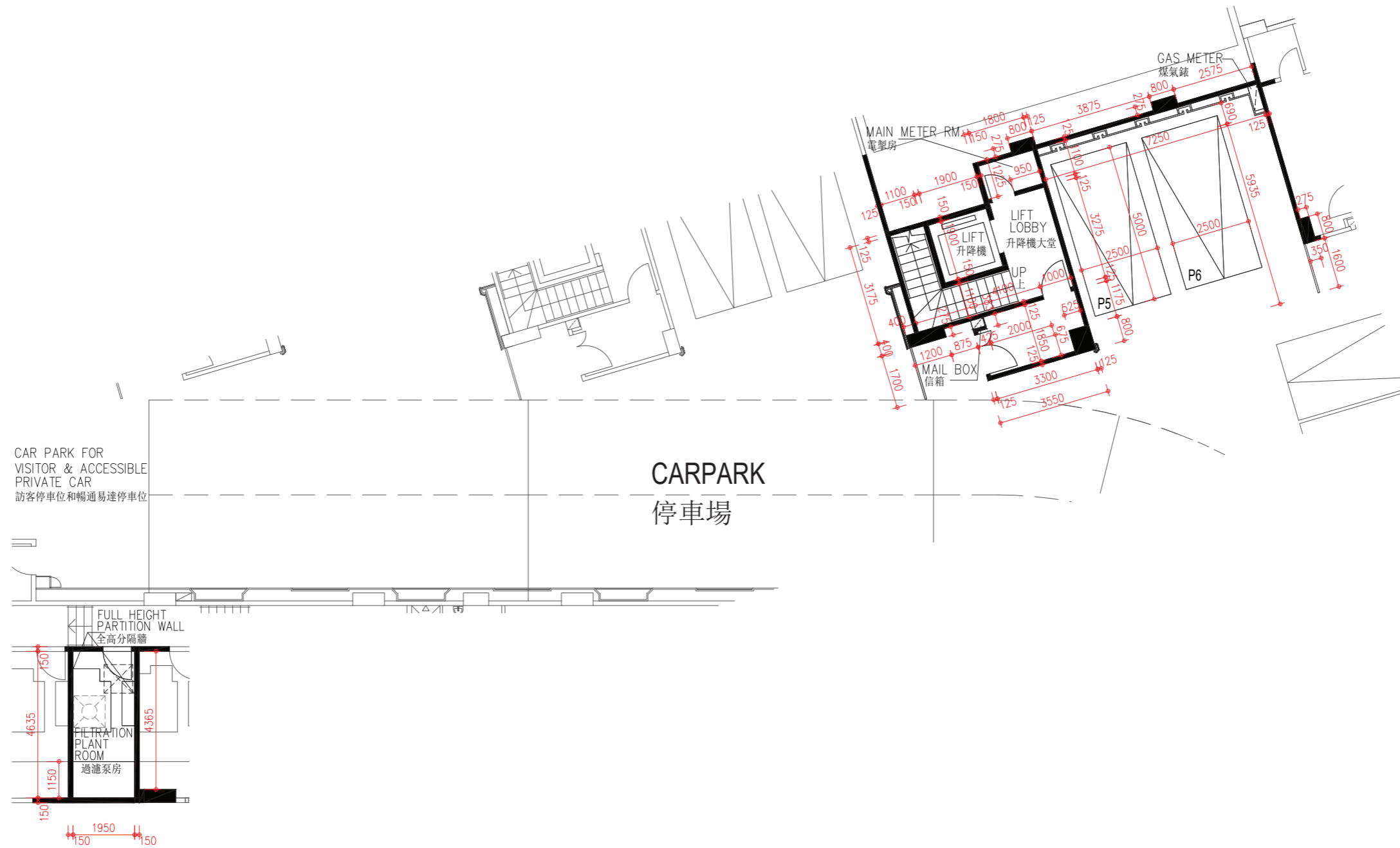
- The internal areas of the residential properties on the upper floors will generally be slightly larger than those on the lower floors because of the reducing thickness of the structural walls on the upper floors.
- The dimensions in floor plans are all in millimeter.
- Saleable area includes the areas of the filtration plant room, main meter room and relevant lift lobby at LG/F.
- The symbols of fittings and fittings shown on the floor plans such as sink units, bathtubs, showerheads, toilets, drain points, cabinets, kitchen cabinets, doors, partitions, furring walls etc. are indications of their approximate locations only and not indications of their actual size, designs and shapes.

備註:

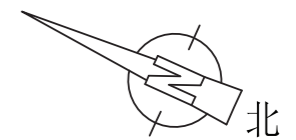
- 因住宅物業的較高樓層的結構牆的厚度遞減，較高樓層的內部面積，一般比較低樓層的內部面積稍大。
- 平面圖所列之數字為以毫米標示之尺寸。
- 實用面積包括低層地下的泳池過濾泵房、電掣房及相關升降機大堂。
- 平面圖上所顯示的形象裝置符號，例如洗滌盆、浴缸、沐浴花灑、座廁、去水位、櫃、廚櫃、門、間隔、飾面牆等只供展示其大約位置而非展示其實際大小、設計及形狀。

FLOOR PLANS OF RESIDENTIAL PROPERTIES IN THE DEVELOPMENT
 發展項目的住宅物業的樓面平面圖

House C
 洋房 C



Lower Ground Floor Plan
 低層地下平面圖



Scale 比例: 0M 5M (米)

FLOOR PLANS OF RESIDENTIAL PROPERTIES IN THE DEVELOPMENT

發展項目的住宅物業的樓面平面圖

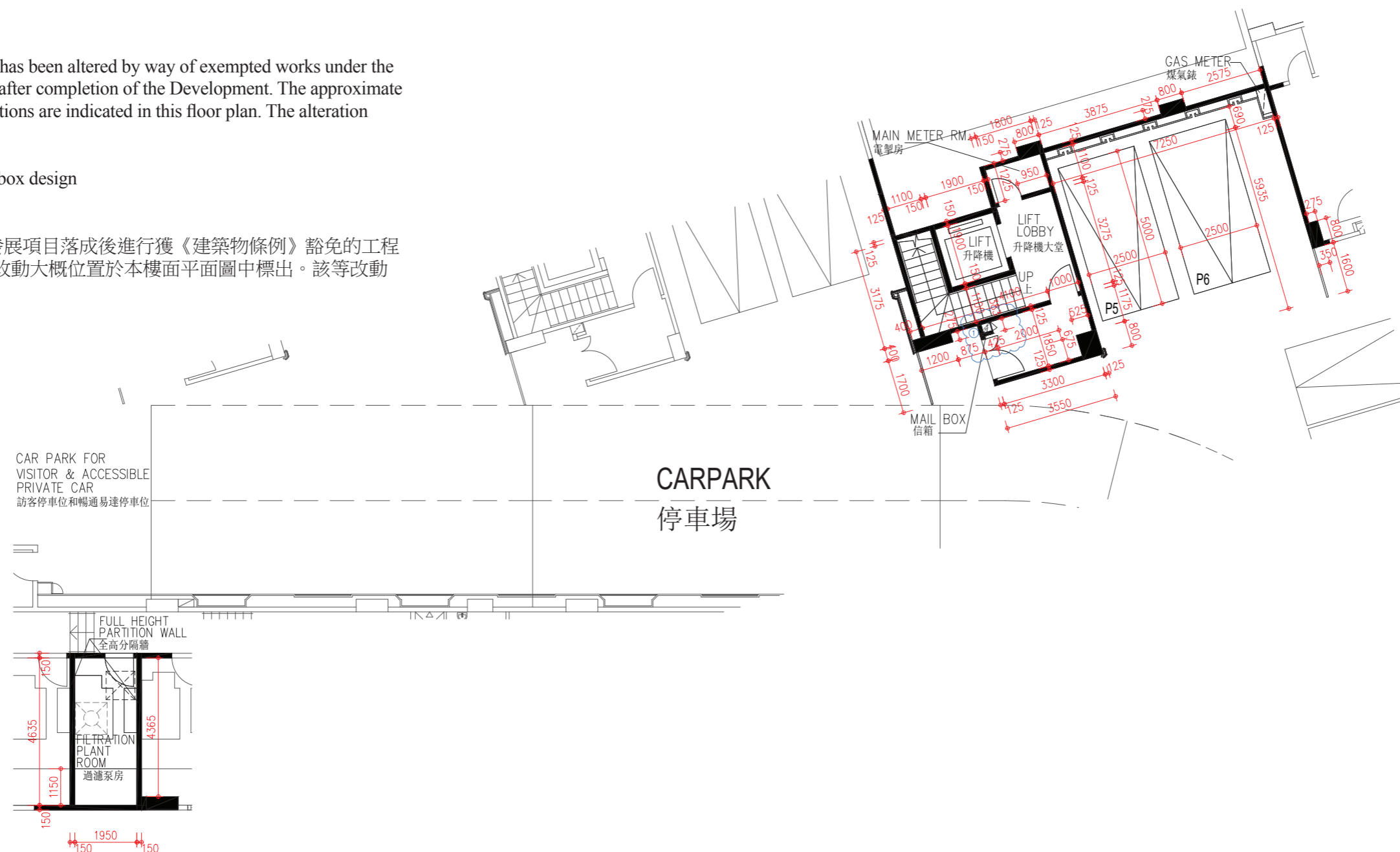
House C
洋房 C

Notes :
This part of House C has been altered by way of exempted works under the Buildings Ordinance after completion of the Development. The approximate locations of the alterations are indicated in this floor plan. The alteration works are as follows:

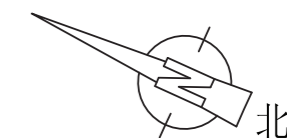
(1) Alteration of mailbox design

備註：
洋房C此部份因在發展項目落成後進行獲《建築物條例》豁免的工程而有所改動。該等改動大概位置於本樓面平面圖中標出。該等改動如下：

(1) 更改信箱設計



Lower Ground Floor AS-IS Plan
低層地下現狀間隔平面圖

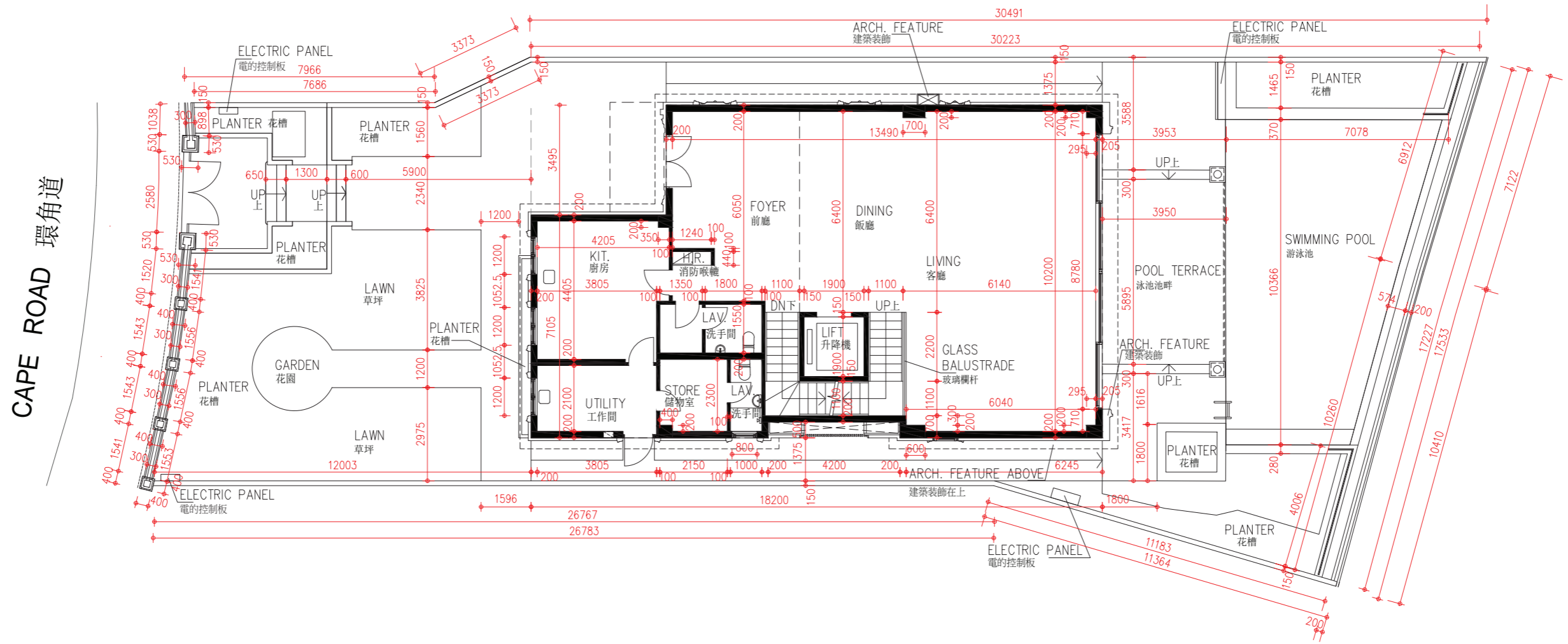


Scale 比例 : 0M 5M (米)

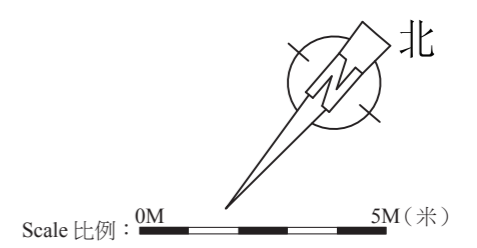
FLOOR PLANS OF RESIDENTIAL PROPERTIES IN THE DEVELOPMENT

發展項目的住宅物業的樓面平面圖

House C
洋房 C



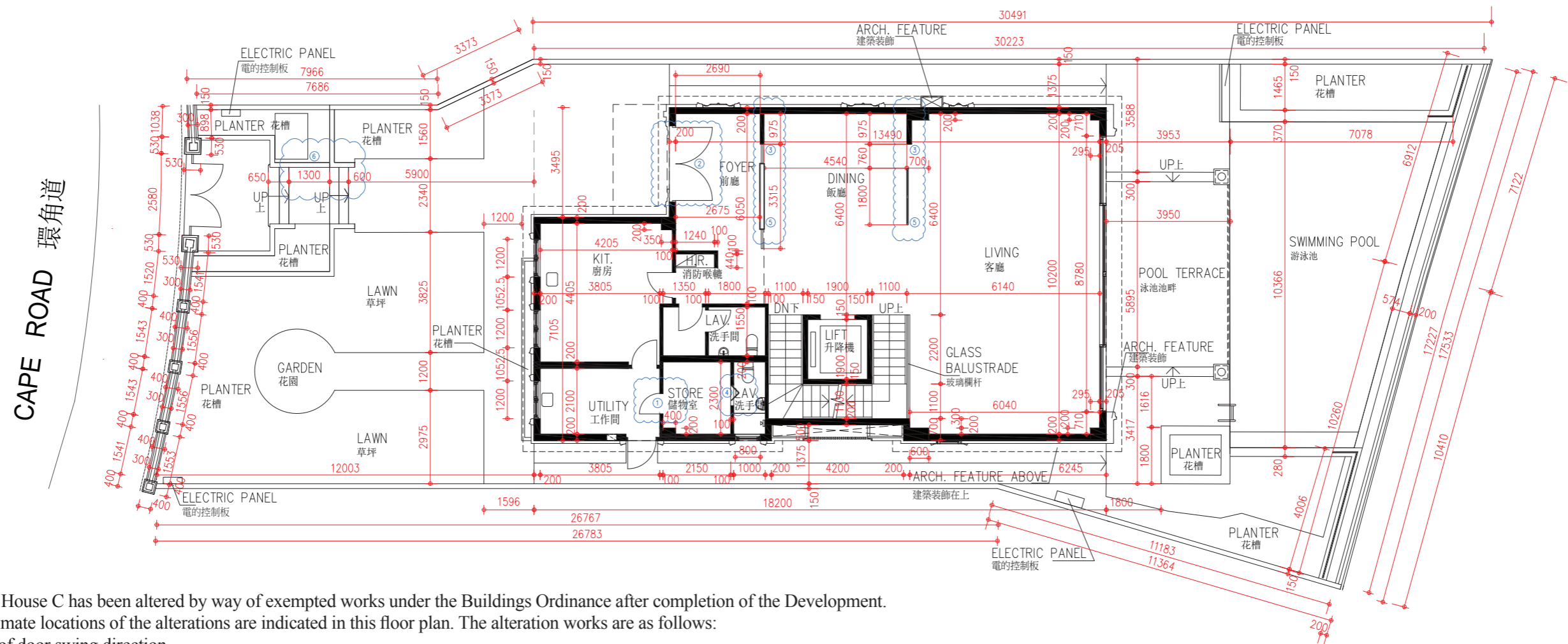
Ground Floor Plan
地下平面圖



FLOOR PLANS OF RESIDENTIAL PROPERTIES IN THE DEVELOPMENT

發展項目的住宅物業的樓面平面圖

House C
洋房 C



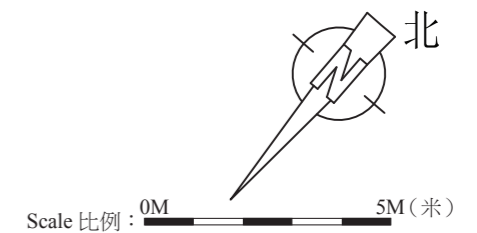
Notes :
This part of House C has been altered by way of exempted works under the Buildings Ordinance after completion of the Development.
The approximate locations of the alterations are indicated in this floor plan. The alteration works are as follows:

- (1) Change of door swing direction
- (2) Alteration of door size
- (3) Erection of internal partition wall
- (4) Replacing swing door with folding door on curb
- (5) Erection of internal metal framed screening
- (6) Extension of planter wall

備註：
洋房C此部份因在發展項目落成後進行獲《建築物條例》豁免的工程而有所改動。該等改動大概位置於本樓面平面圖中標出。
該等改動如下：

- (1) 更改掩門開啟方向
- (2) 擴寬大門尺寸
- (3) 加設間隔牆
- (4) 以房間緣石上安裝折疊門取代掩門
- (5) 加設金屬框間隔屏風
- (6) 延伸花槽牆

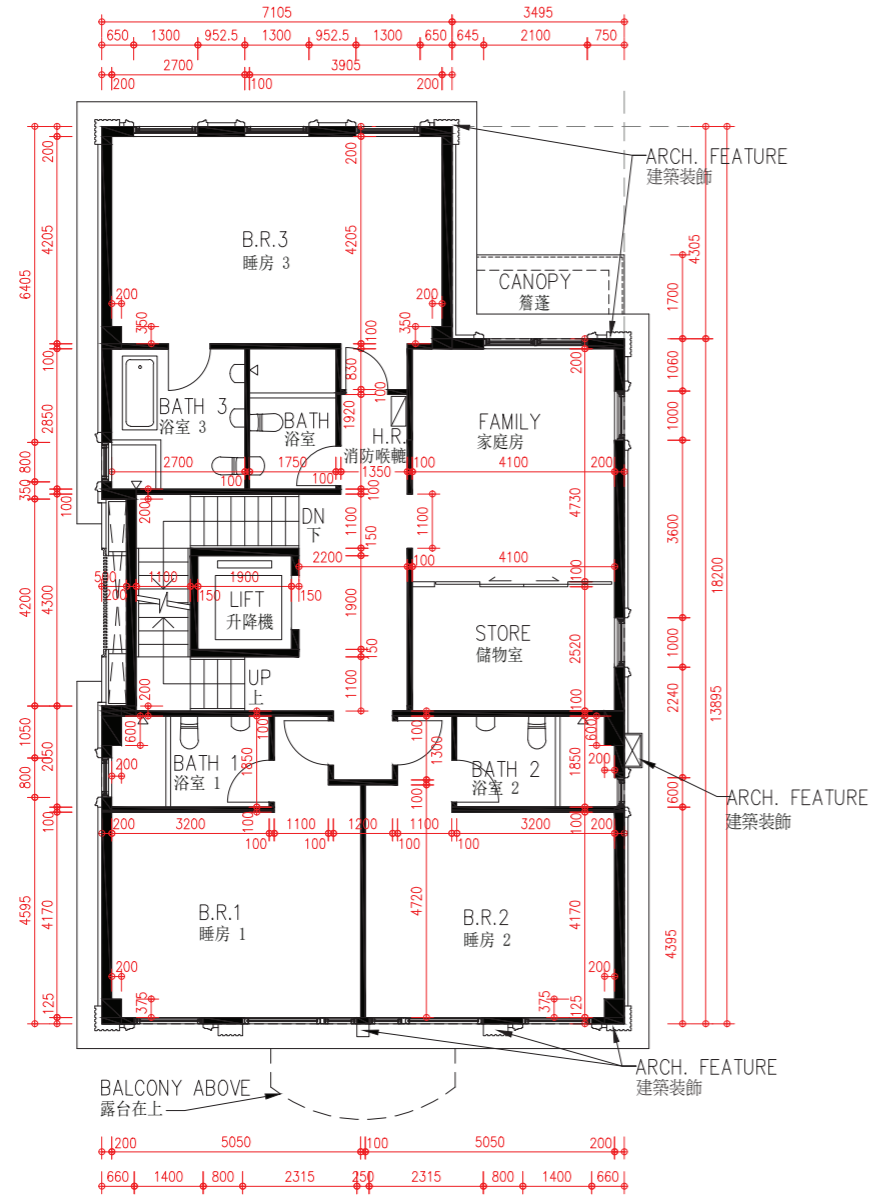
Ground Floor AS-IS Plan
地下現狀間隔平面圖



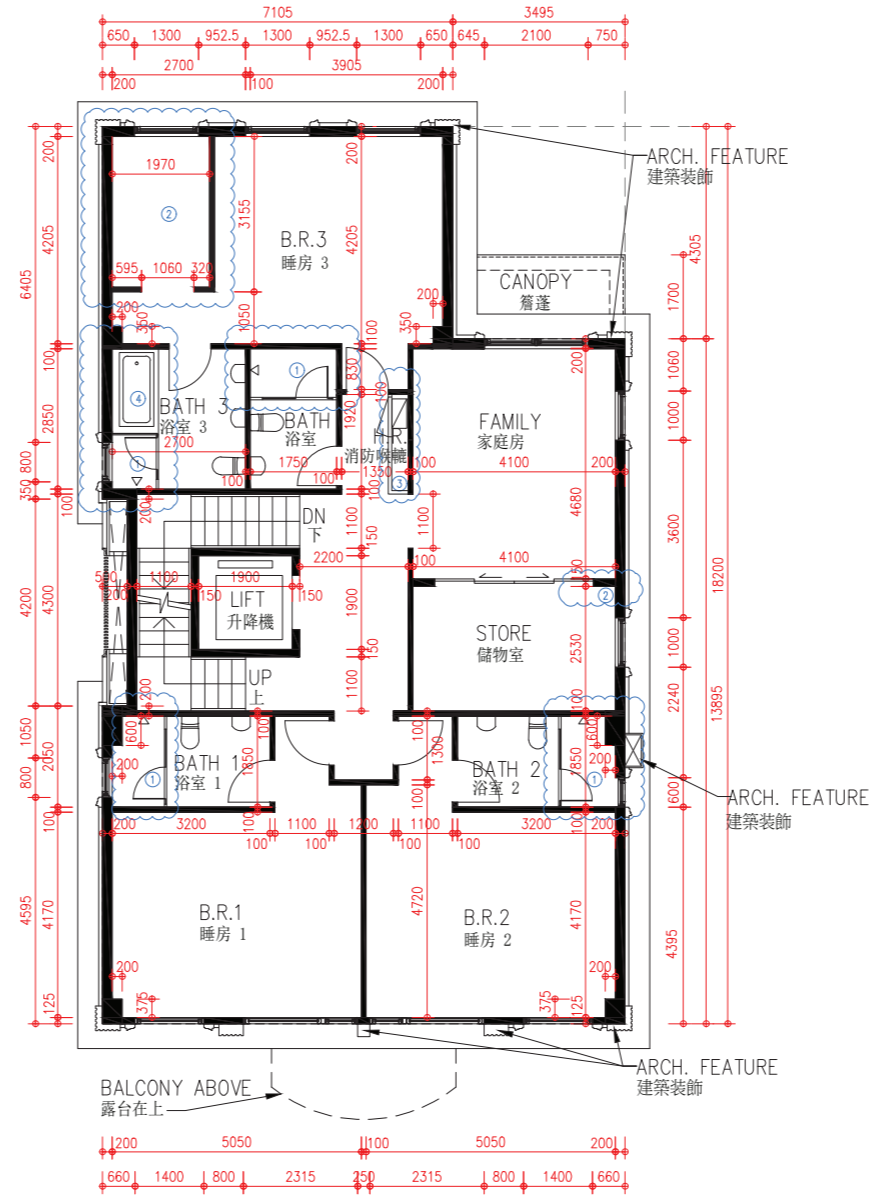
FLOOR PLANS OF RESIDENTIAL PROPERTIES IN THE DEVELOPMENT

發展項目的住宅物業的樓面平面圖

House C
洋房 C



1st Floor Plan
一樓平面圖



1st Floor AS-IS Plan
一樓現狀間隔平面圖

Notes :

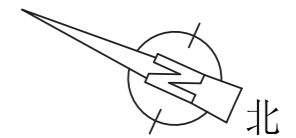
This part of House C has been altered by way of exempted works under the Buildings Ordinance after completion of the Development. The approximate locations of the alterations are indicated in this floor plan. The alteration works are as follows:

- (1) Erection of shower cubicle with glass partition and glass door
- (2) Erection of internal partition wall
- (3) Installation of furring wall and access panel for hose reel cabinet
- (4) Alteration of bathtub

備註：

洋房C此部份因在發展項目落成後進行獲《建築物條例》豁免的工程而有所改動。該等改動大概位置於本樓面平面圖中標出。該等改動如下：

- (1) 加設淋浴間玻璃牆及玻璃門
- (2) 加設間隔牆
- (3) 安裝消防喉轆間隔飾面牆及開口掩門
- (4) 更換浴缸

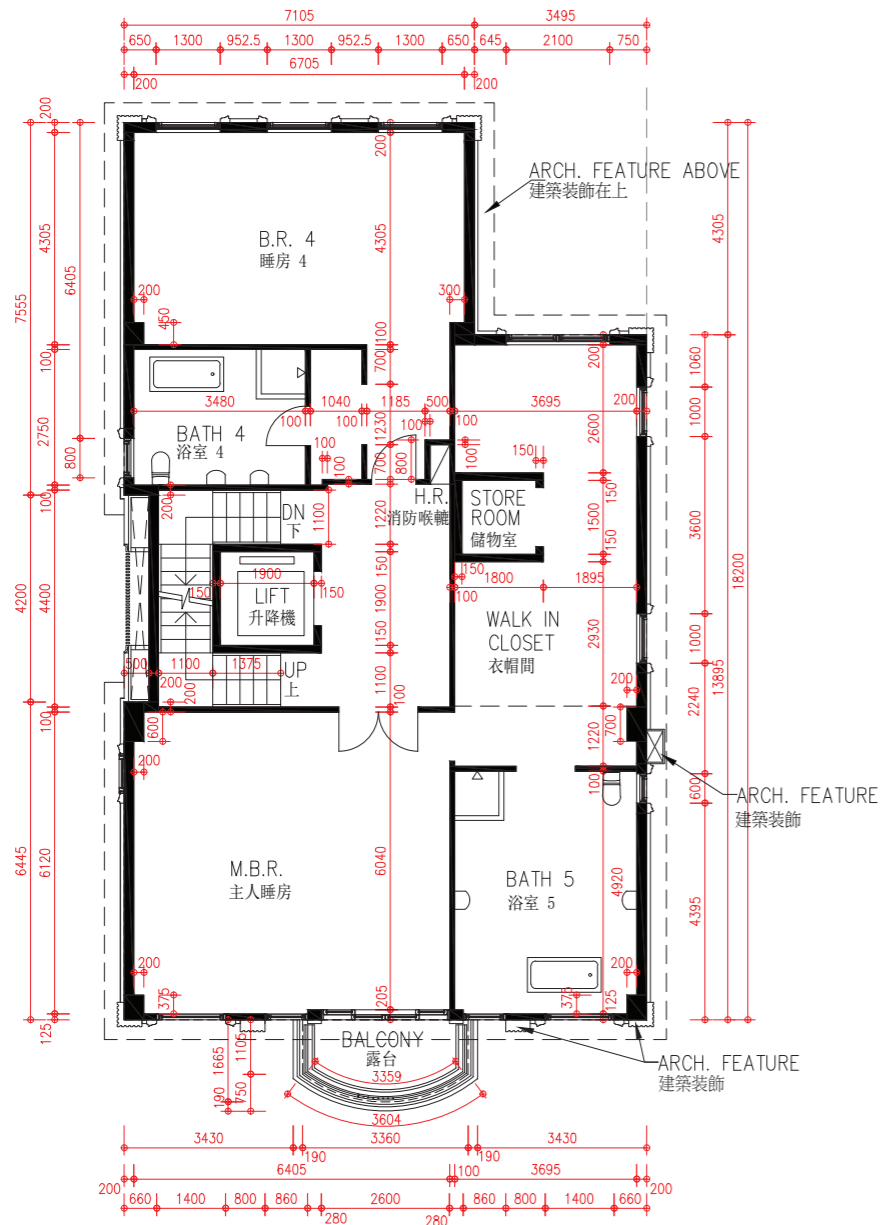


Scale 比例：0M 5M (米)

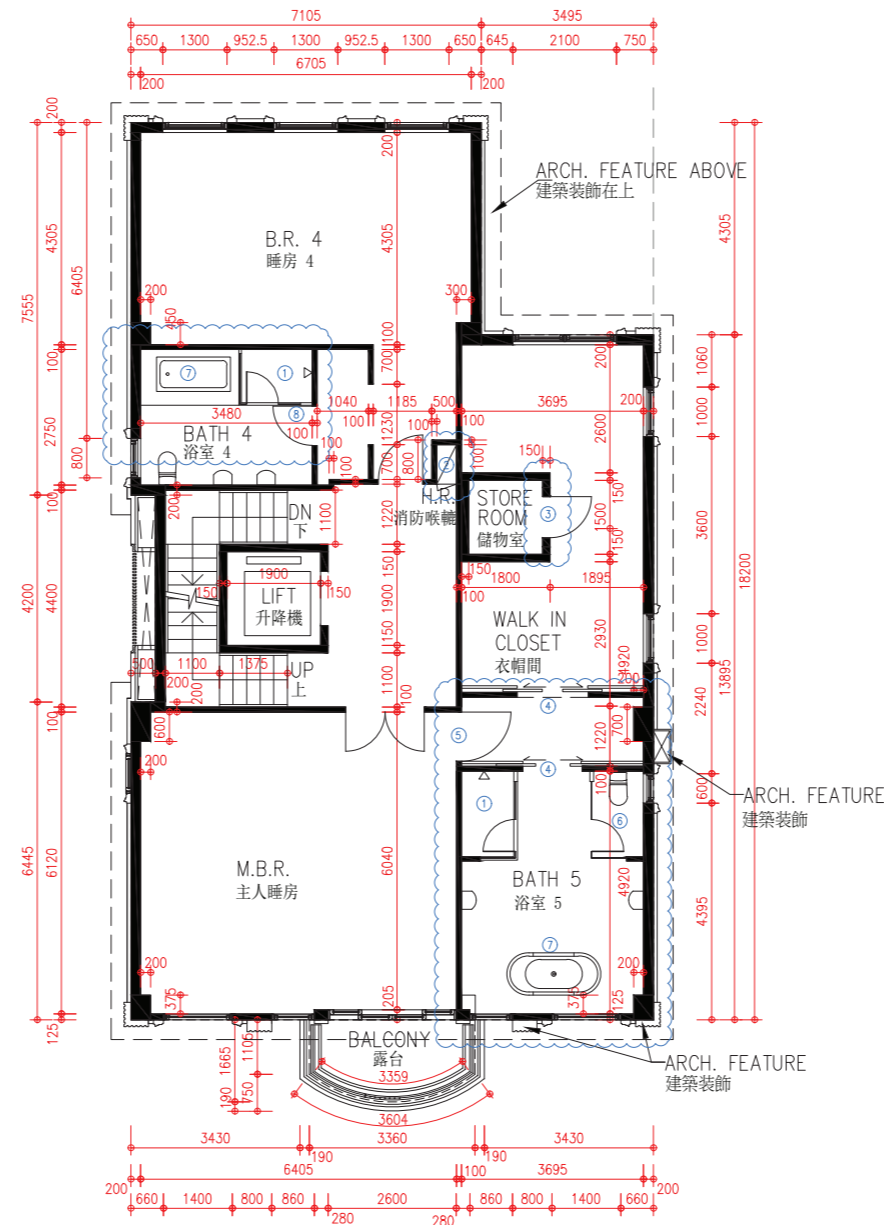
FLOOR PLANS OF RESIDENTIAL PROPERTIES IN THE DEVELOPMENT

發展項目的住宅物業的樓面平面圖

House C
洋房C



2nd Floor Plan
二樓平面圖



2nd Floor AS-IS Plan
二樓現狀間隔平面圖

Notes :

This part of House C has been altered by way of exempted works under the Buildings Ordinance after completion of the Development.

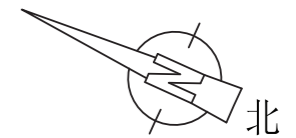
The approximate locations of the alterations are indicated in this floor plan. The alteration works are as follows:

- (1) Erection of shower cubicle with glass partition and glass door
- (2) Installation of access panel for hose reel cabinet
- (3) Extension of internal partition wall and installation of swing door
- (4) Erection of internal partition wall and installation of sliding door
- (5) Installation of door
- (6) Erection of toilet cubicle with glass partition and glass door
- (7) Alteration of bathtub
- (8) Change of door swing direction

備註：

洋房C此部份因在發展項目落成後進行獲《建築物條例》豁免的工程而有所改動。該等改動大概位置於本樓面平面圖中標出。該等改動如下：

- (1) 加設淋浴間玻璃牆及玻璃門
- (2) 安裝消防喉轆開口掩門
- (3) 延伸間隔牆及安裝掩門
- (4) 加設間隔牆及安裝趟門
- (5) 安裝掩門
- (6) 加設廁所隔間玻璃牆及玻璃門
- (7) 更換浴缸
- (8) 更改掩門開啟方向

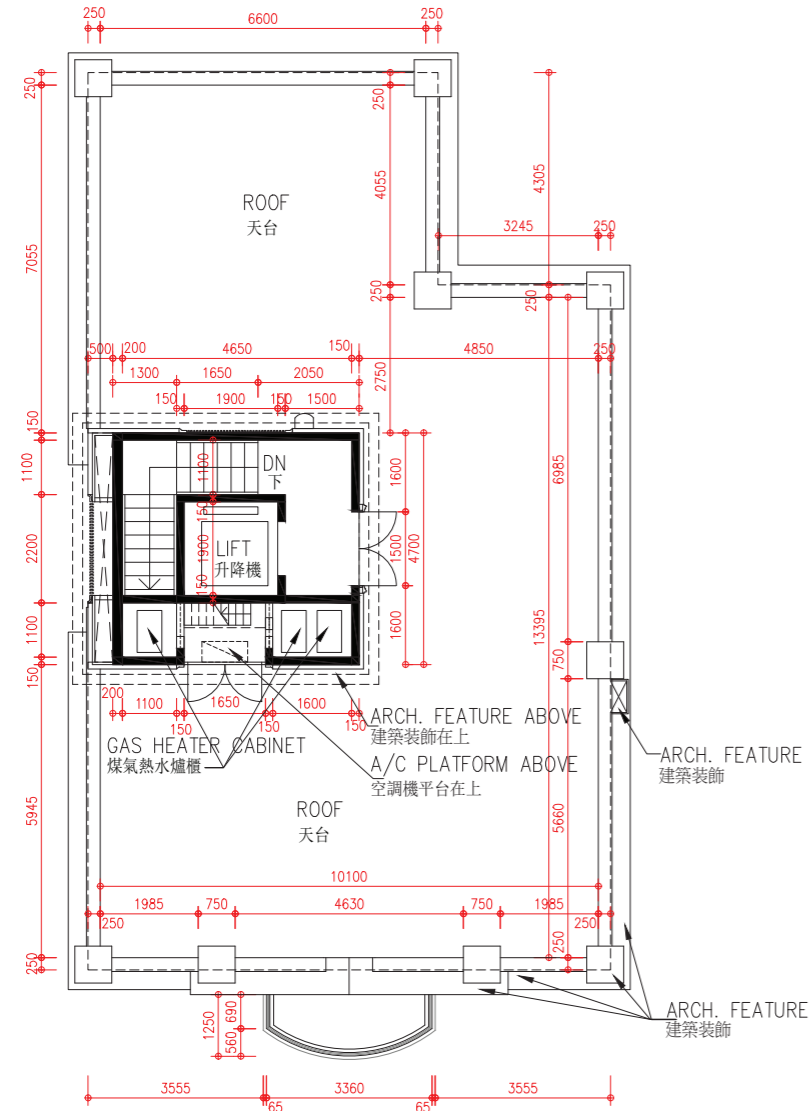


Scale 比例：0M 5M (米)

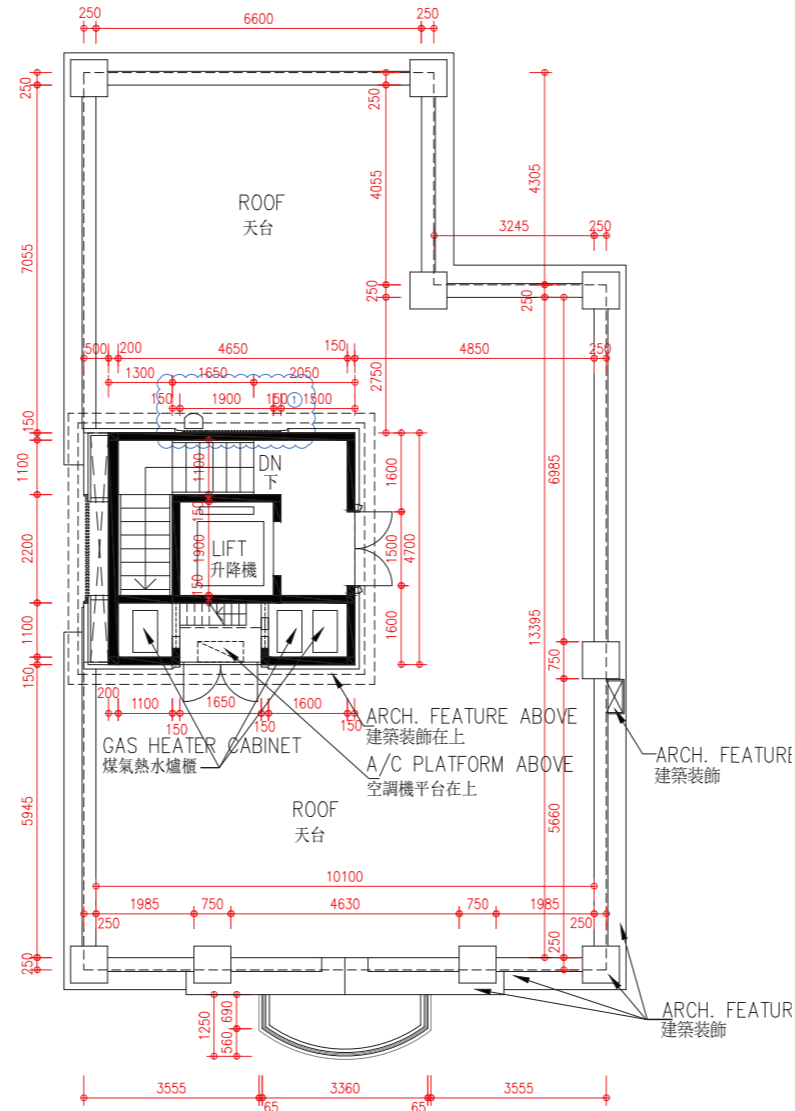
FLOOR PLANS OF RESIDENTIAL PROPERTIES IN THE DEVELOPMENT

發展項目的住宅物業的樓面平面圖

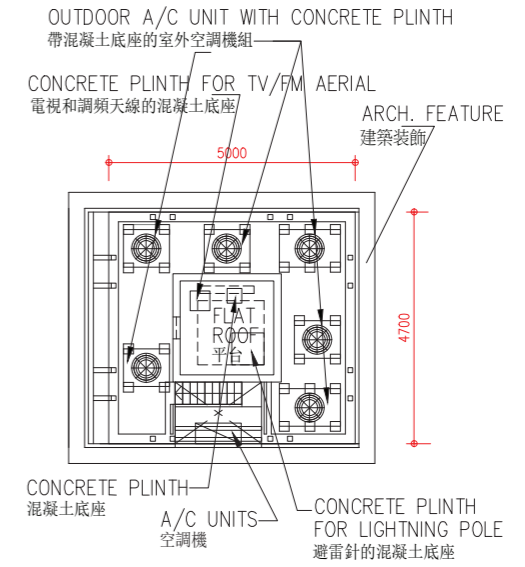
House C
洋房 C



Roof Plan
天台平面圖



Roof AS-IS Plan
天台現狀間隔平面圖



Upper Roof Plan
高層天台平面圖

Notes :

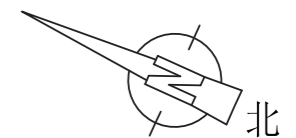
This part of House C has been altered by way of exempted works under the Buildings Ordinance after completion of the Development. The approximate locations of the alterations are indicated in this floor plan. The alteration works are as follows:

- (1) Relocation of sink

備註：

洋房C此部份因在發展項目落成後進行獲《建築物條例》豁免的工程而有所改動。該等改動大概位置於本樓面平面圖中標出。該等改動如下：

- (1) 更改水槽位置



Scale 比例：0M 5M (米)

Notes:
For the location of the roof, it was specified as flat roof in the general building plans of the Development approved by the Building Authority. In practice, it is a roof and its area is calculated under the roof.

備註：
有關天台的位置在該發展項目經建築事務監督批准的建築圖則上列為平台，實際上其用途為天台，其面積將以天台計算。

FLOOR PLANS OF RESIDENTIAL PROPERTIES IN THE DEVELOPMENT

發展項目的住宅物業的樓面平面圖

House C 洋房 C

Floor 樓層	Thickness of Floor Slabs (Excluding Plaster) of House C (mm) 洋房C的樓板(不包括灰泥)的厚度(毫米)	Floor-to-Floor Height of House C (mm) 洋房C層與層之間的高度(毫米)
LG/F 低層地下	125, 150, 200	4060, 5400
G/F 地下	100, 125, 150, 175, 225	4500
1/F 1樓	125, 175, 225	3500
2/F 2樓	100, 125, 150, 175, 225, 250	3500, 3750
R/F 天台	125	3250

Notes:

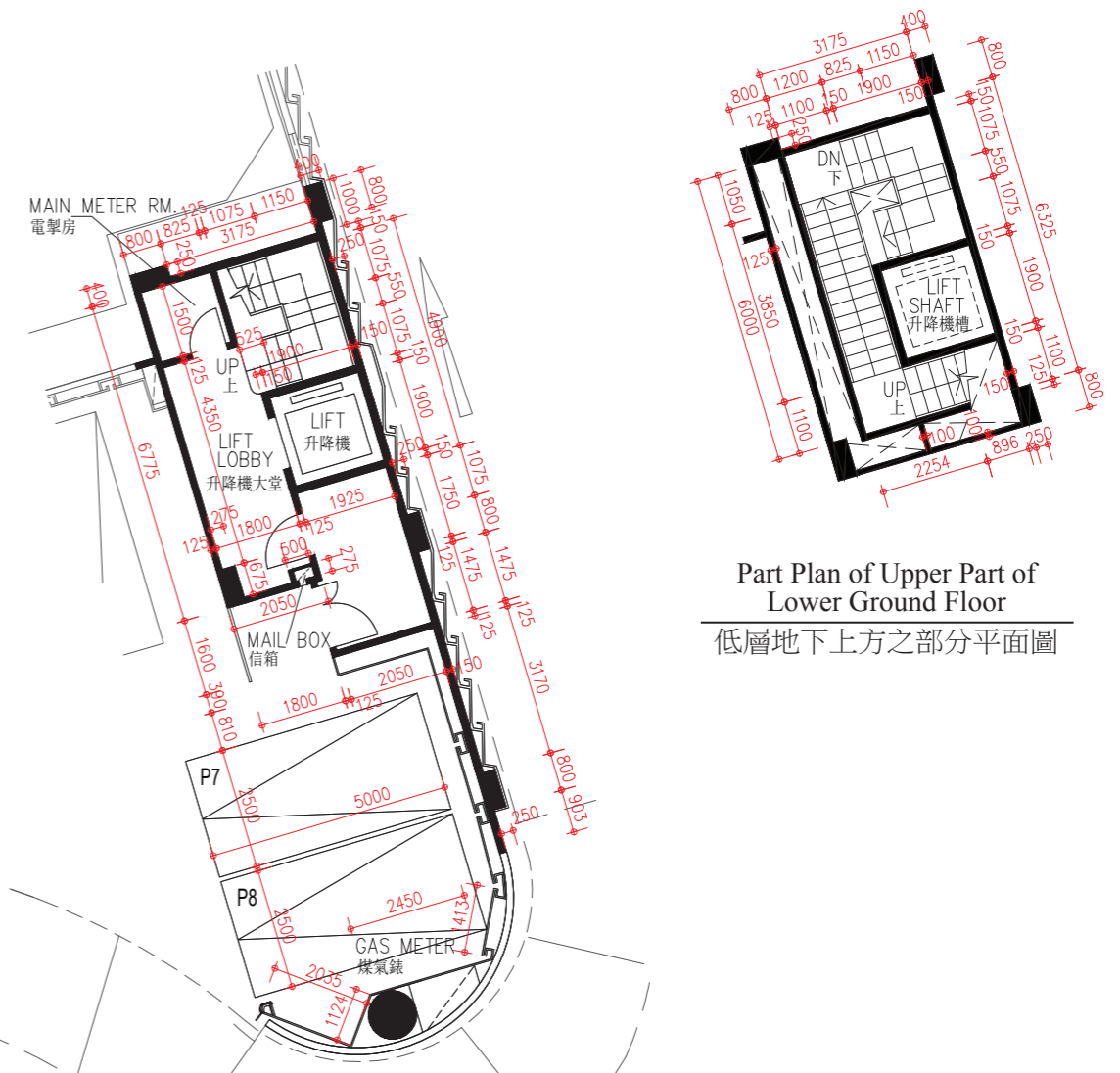
1. The internal areas of the residential properties on the upper floors will generally be slightly larger than those on the lower floors because of the reducing thickness of the structural walls on the upper floors.
2. The dimensions in floor plans are all in millimeter.
3. Saleable area includes the areas of the filtration plant room, main meter room and relevant lift lobby at LG/F.
4. The symbols of fittings and fixtures shown on the floor plans such as sink units, bathtubs, showerheads, toilets, drain points, cabinets, kitchen cabinets, doors, partitions, furring walls etc. are indications of their approximate locations only and not indications of their actual size, designs and shapes.

備註:

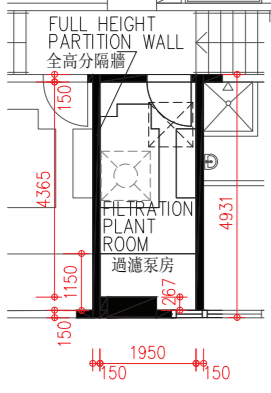
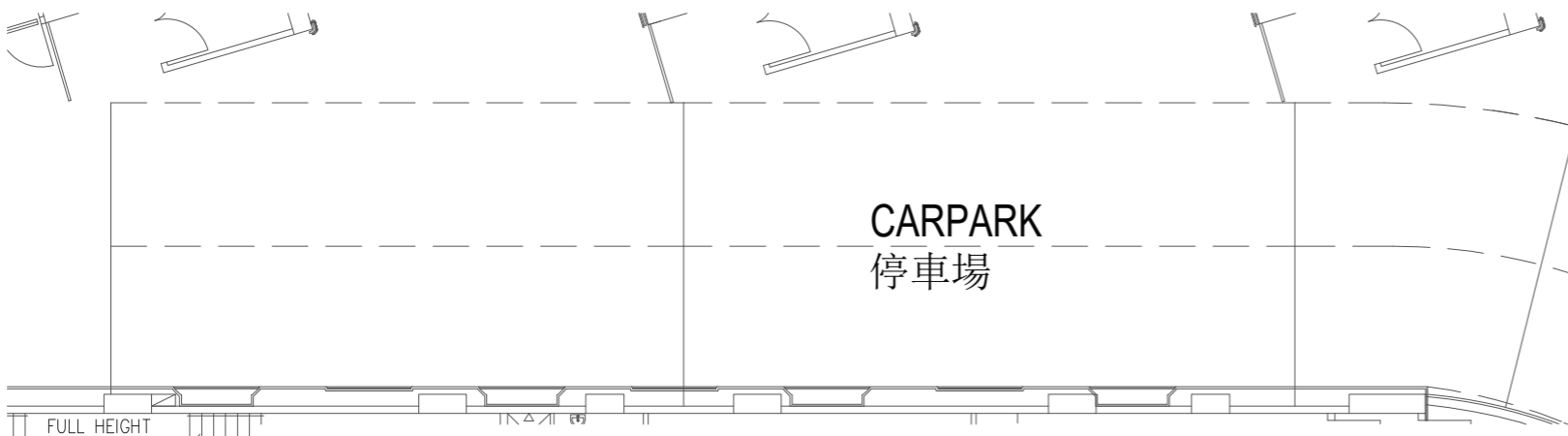
1. 因住宅物業的較高樓層的結構牆的厚度遞減，較高樓層的內部面積，一般比較低樓層的內部面積稍大。
2. 平面圖所列之數字為以毫米標示之尺寸。
3. 實用面積包括低層地下的泳池過濾泵房、電掣房及相關升降機大堂。
4. 平面圖上所顯示的形象裝置符號，例如洗滌盆、浴缸、沐浴花灑、座廁、去水位、櫃、廚櫃、門、間隔、飾面牆等只供展示其大約位置而非展示其實際大小、設計及形狀。

FLOOR PLANS OF RESIDENTIAL PROPERTIES IN THE DEVELOPMENT
發展項目的住宅物業的樓面平面圖

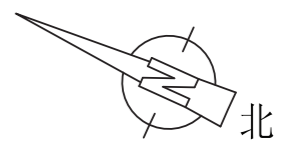
House D
洋房 D



Part Plan of Upper Part of
Lower Ground Floor
低層地下上方之部分平面圖



Lower Ground Floor Plan
低層地下平面圖



Scale 比例 : 0M 5M (米)

FLOOR PLANS OF RESIDENTIAL PROPERTIES IN THE DEVELOPMENT

發展項目的住宅物業的樓面平面圖

House D
洋房 D

Notes :

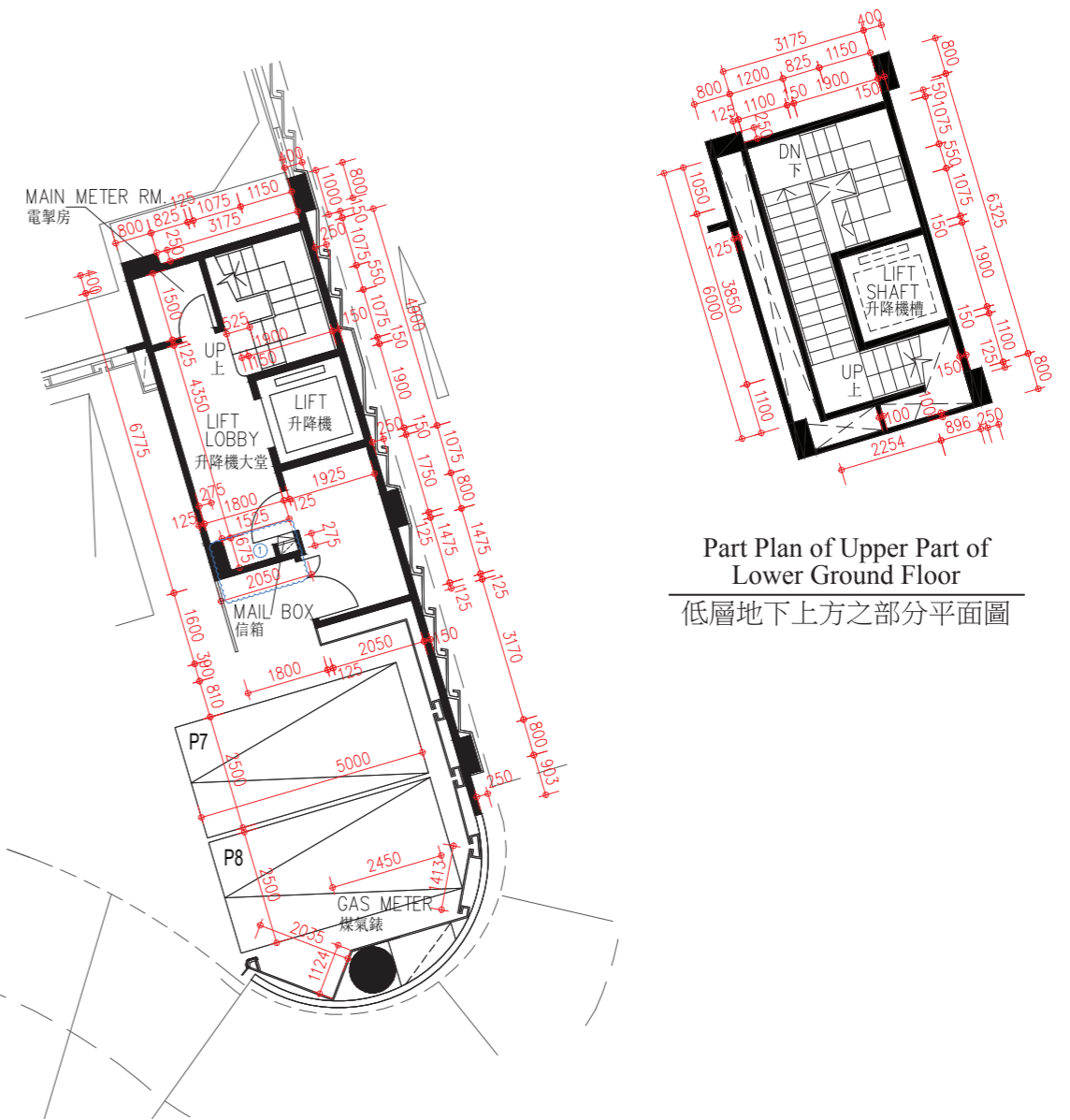
This part of House D has been altered by way of exempted works under the Buildings Ordinance after completion of the Development. The approximate locations of the alterations are indicated in this floor plan. The alteration works are as follows:

- (1) Alteration of mailbox design

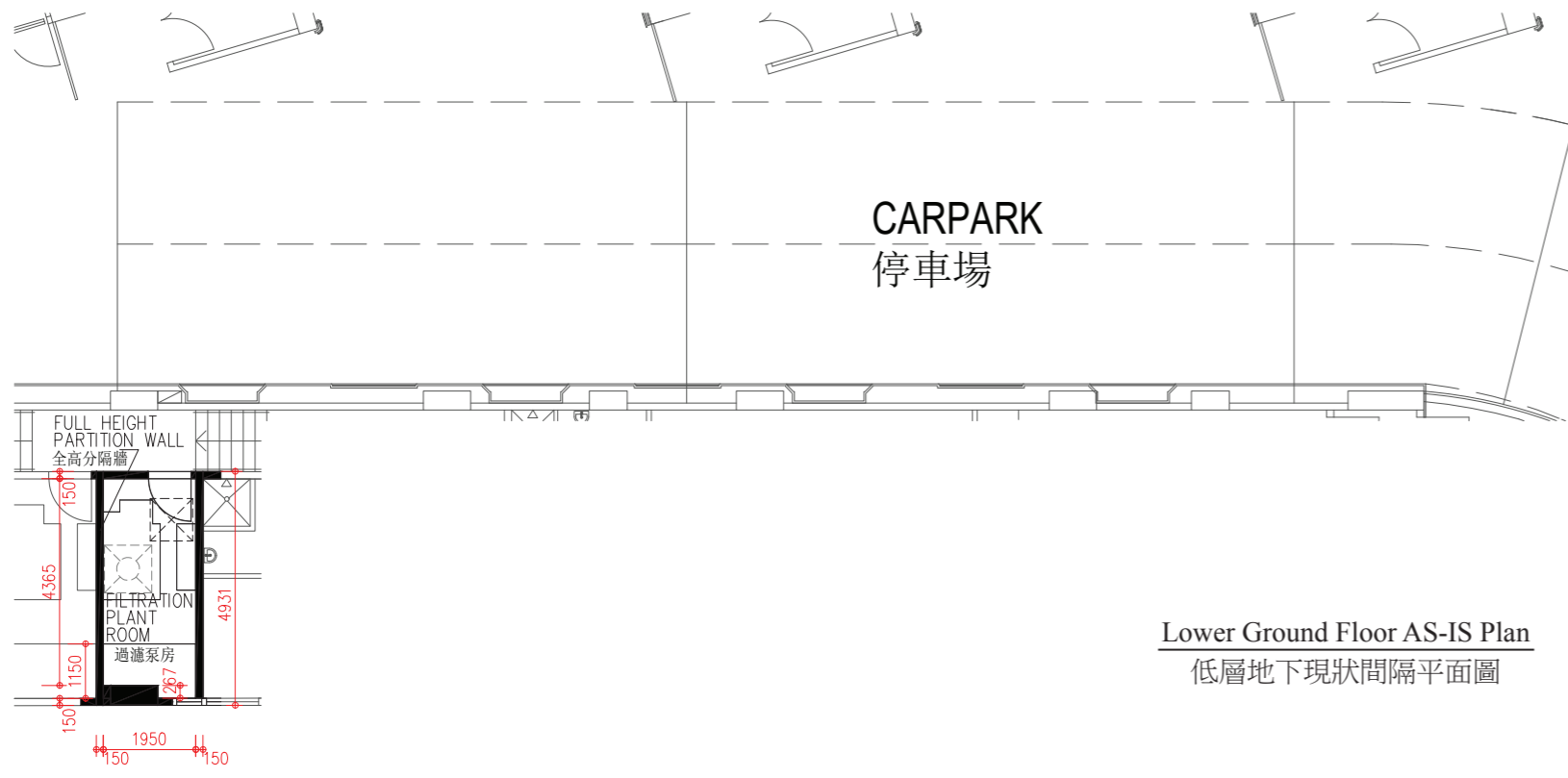
備註：

洋房D此部份因在發展項目落成後進行獲《建築物條例》豁免的工程而有所改動。該等改動大概位置於本樓面平面圖中標出。該等改動如下：

- (1) 更改信箱設計



Part Plan of Upper Part of
Lower Ground Floor
低層地下上方之部分平面圖



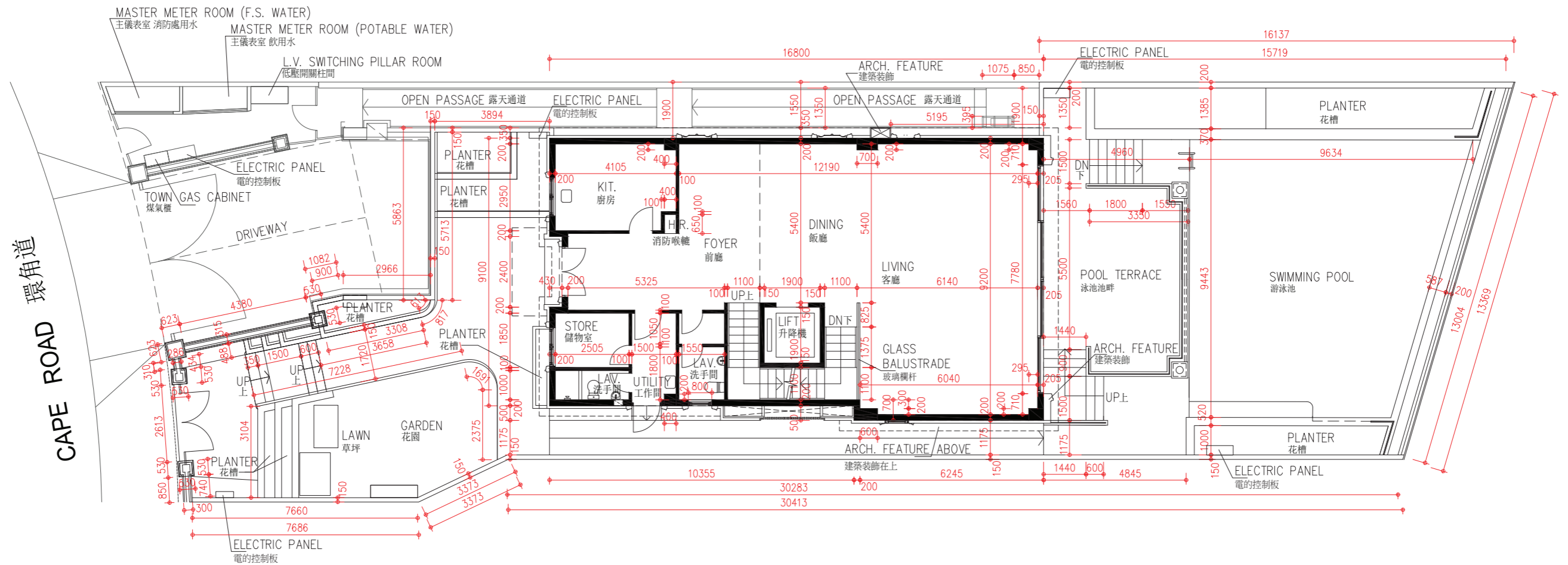
Lower Ground Floor AS-IS Plan
低層地下現狀間隔平面圖

Scale 比例 : 0M 5M (米)

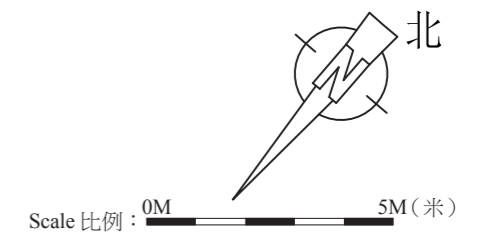
FLOOR PLANS OF RESIDENTIAL PROPERTIES IN THE DEVELOPMENT

發展項目的住宅物業的樓面平面圖

House D
洋房D



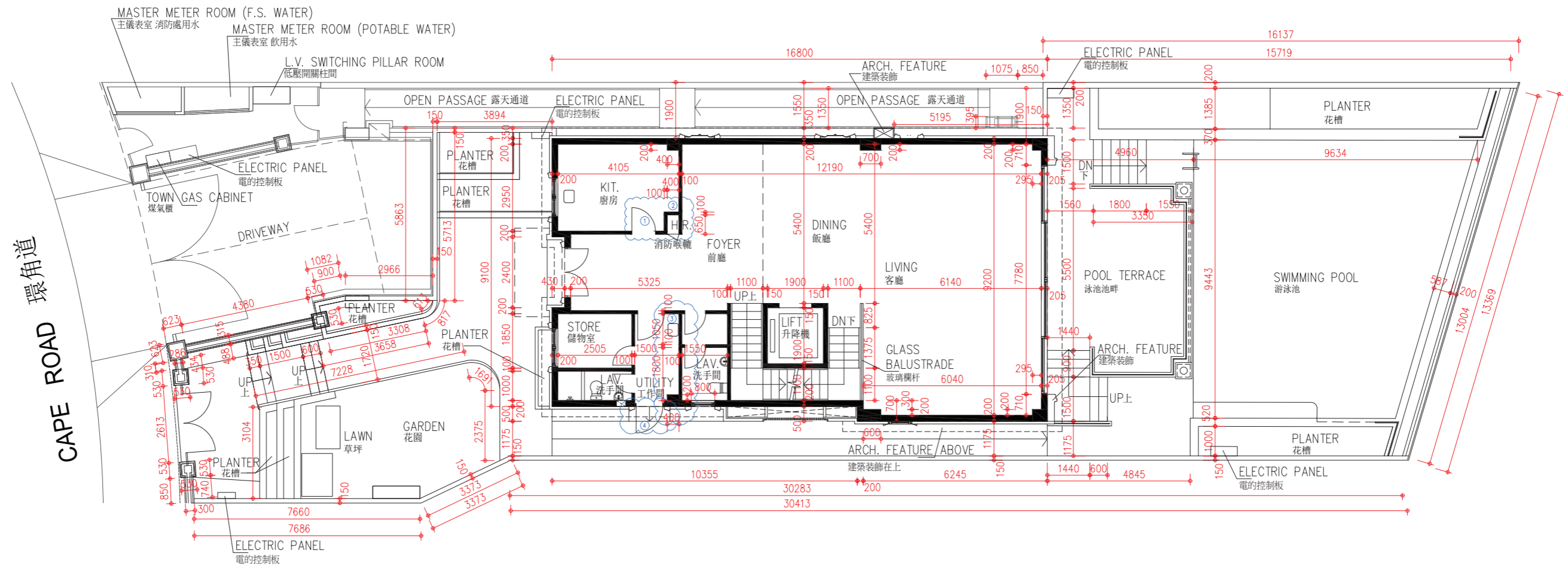
Ground Floor Plan
地下平面圖



FLOOR PLANS OF RESIDENTIAL PROPERTIES IN THE DEVELOPMENT

發展項目的住宅物業的樓面平面圖

House D
洋房D



Notes :

This part of House D has been altered by way of exempted works under the Buildings Ordinance after completion of the Development. The approximate locations of the alterations are indicated in this floor plan. The alteration works are as follows:

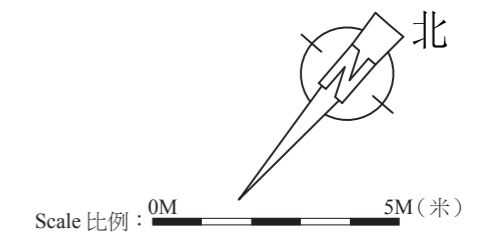
- (1) Change of door swing direction
- (2) Installation of access panel for hose reel cabinet
- (3) Relocation of sink
- (4) Alteration of width of step

備註：

備註：洋房D此部份因在發展項目落成後進行獲《建築物條例》豁免的工程而有所改動。該等改動大概位置於本樓面平面圖中標出。該等改動如下：

- (1) 更改掩門開啟方向
- (2) 安裝消防喉轆開口掩門
- (3) 更改水槽位置
- (4) 更改梯級寬度

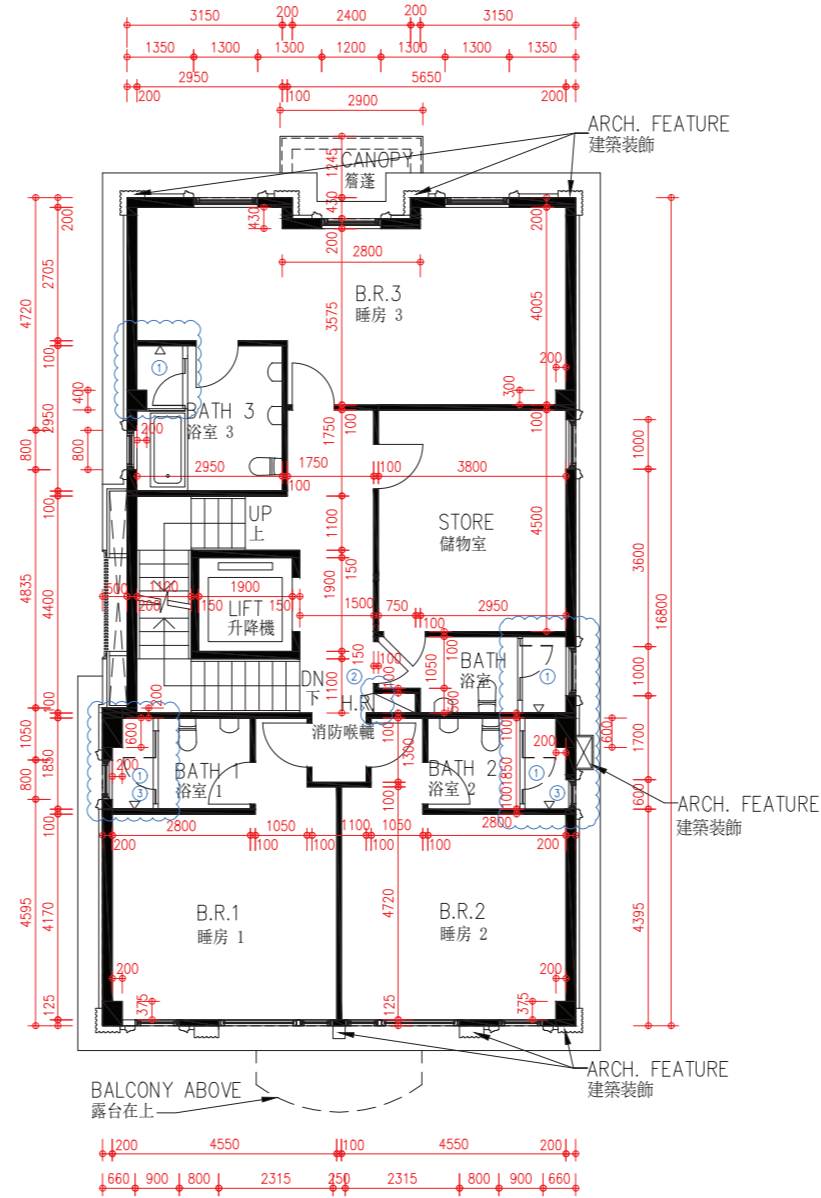
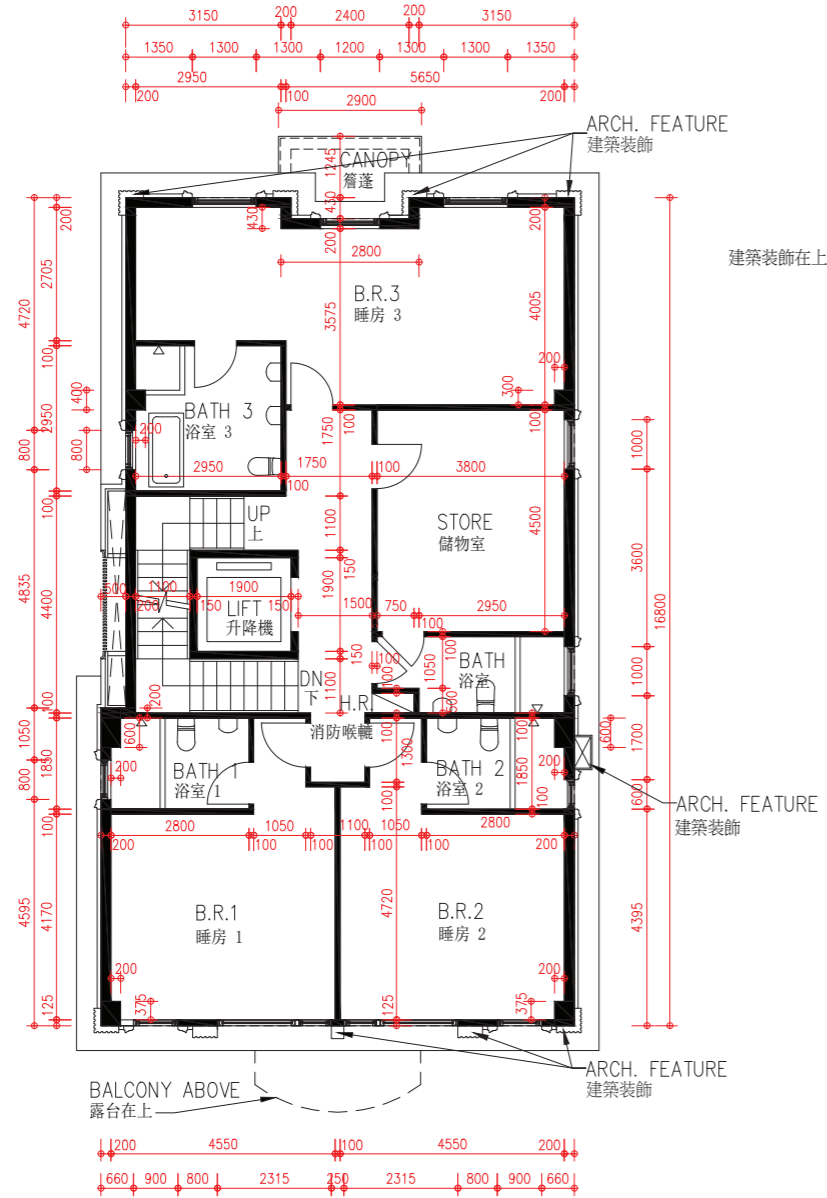
Ground Floor AS-IS Plan
地下現狀間隔平面圖



FLOOR PLANS OF RESIDENTIAL PROPERTIES IN THE DEVELOPMENT

發展項目的住宅物業的樓面平面圖

House D
洋房D



Notes :

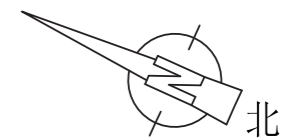
This part of House D has been altered by way of exempted works under the Buildings Ordinance after completion of the Development. The approximate locations of the alterations are indicated in this floor plan. The alteration works are as follows:

- (1) Erection of shower cubicle with glass partition and glass door
- (2) Installation of access panel for hose reel cabinet
- (3) Relocation of shower faucet

備註：

洋房D此部份因在發展項目落成後進行獲《建築物條例》豁免的工程而有所改動。該等改動大概位置於本樓面平面圖中標出。該等改動如下：

- (1) 加設淋浴間玻璃牆及玻璃門
- (2) 安裝消防喉轆開口掩門
- (3) 更改淋浴器位置

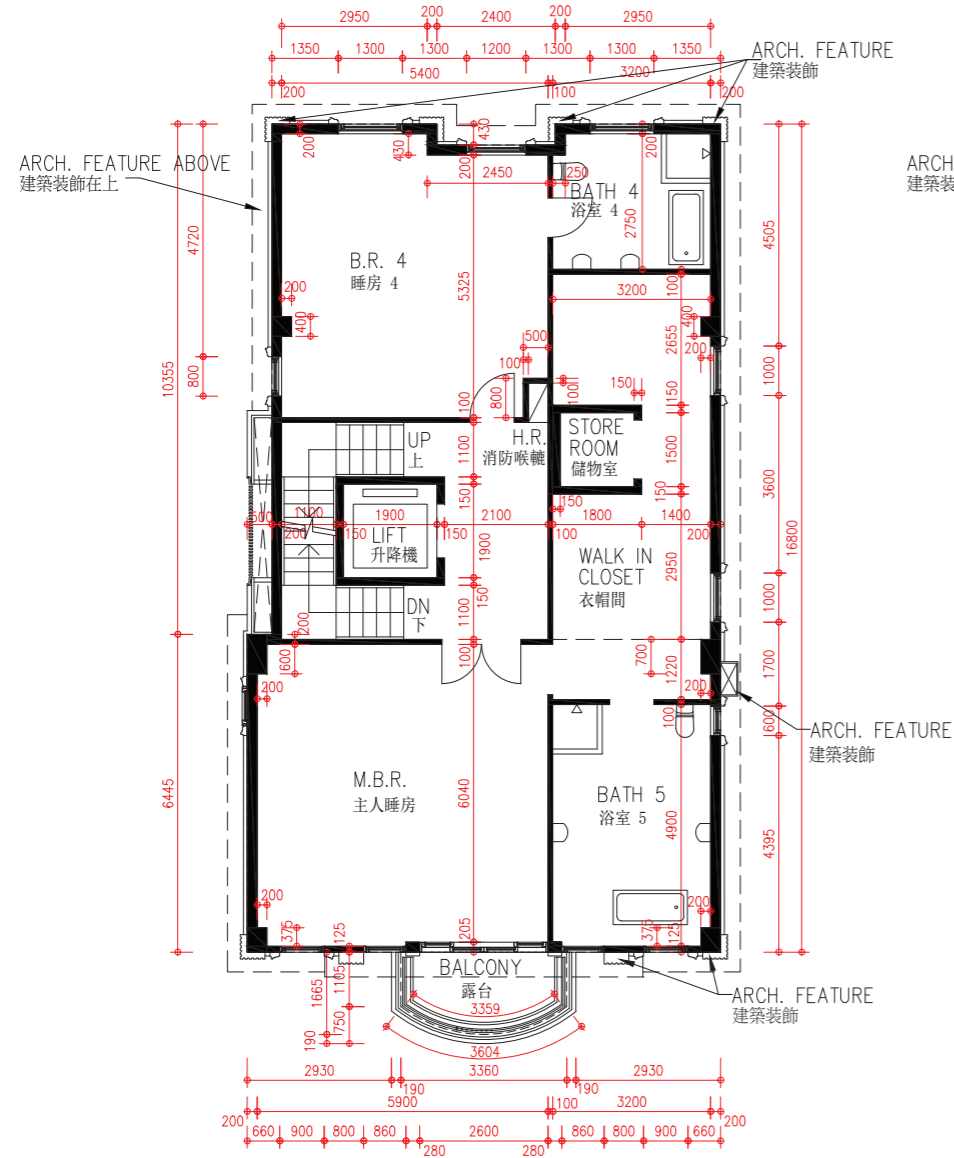


Scale 比例：0M 5M (米)

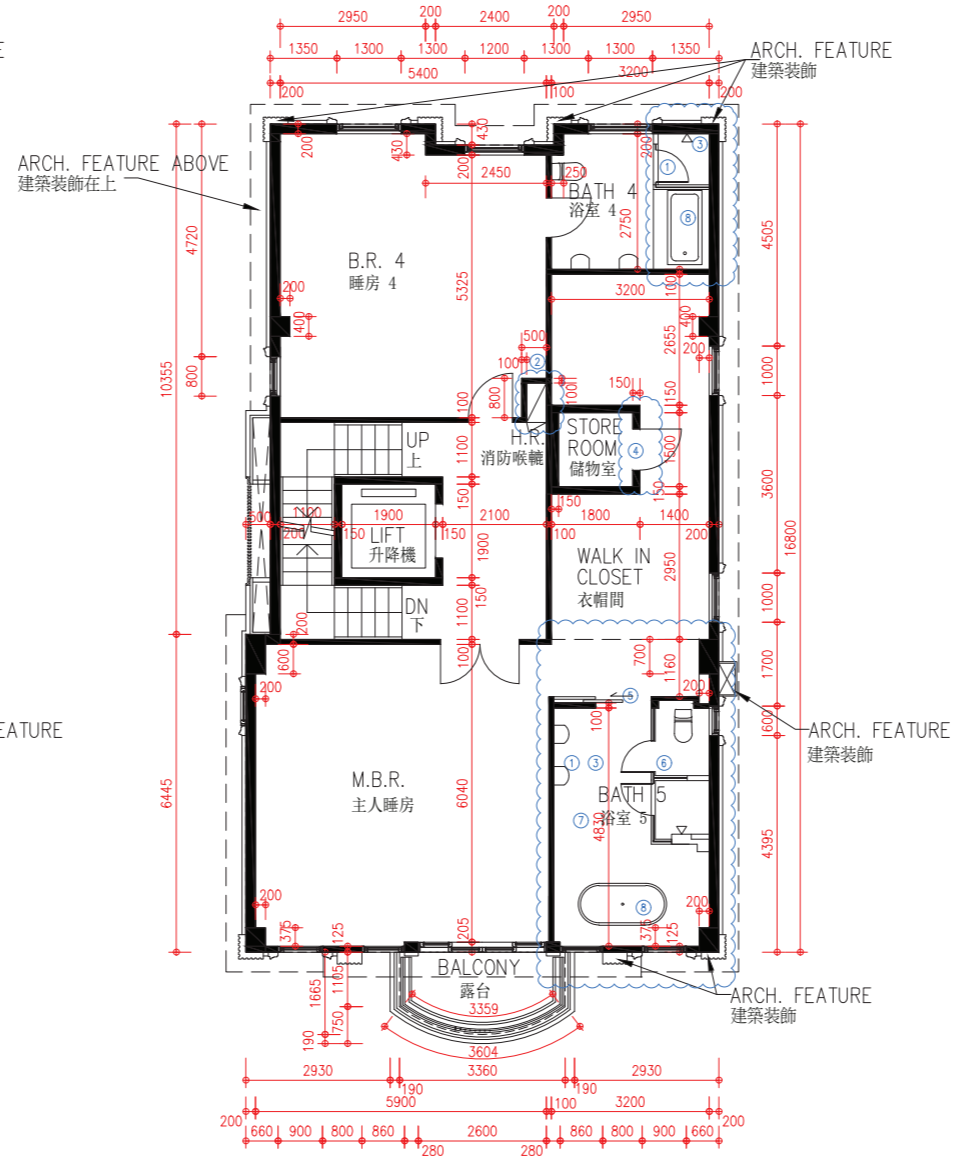
FLOOR PLANS OF RESIDENTIAL PROPERTIES IN THE DEVELOPMENT

發展項目的住宅物業的樓面平面圖

House D
洋房D



2nd Floor Plan
二樓平面圖



2nd Floor AS-IS Plan
二樓現狀間隔平面圖

Notes :

This part of House D has been altered by way of exempted works under the Buildings Ordinance after completion of the Development.

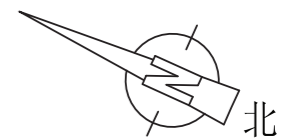
The approximate locations of the alterations are indicated in this floor plan. The alteration works are as follows:

- (1) Erection of shower cubicle with glass partition and glass door
- (2) Installation of access panel for hose reel cabinet
- (3) Relocation of shower faucet
- (4) Installation of swing door
- (5) Alteration of internal partition wall and installation of sliding door
- (6) Erection of toilet cubicle with glass partition and glass door
- (7) Relocation of wash basins
- (8) Alteration of bathtub

備註：

洋房D此部份因在發展項目落成後進行獲《建築物條例》豁免的工程而有所改動。該等改動大概位置於本樓面平面圖中標出。該等改動如下：

- (1) 加設淋浴間玻璃牆及玻璃門
- (2) 安裝消防喉轆開口掩門
- (3) 更改淋浴器位置
- (4) 安裝掩門
- (5) 更改間隔牆及安裝趟門
- (6) 加設廁所隔間玻璃牆及玻璃門
- (7) 更改洗手盆位置
- (8) 更換浴缸

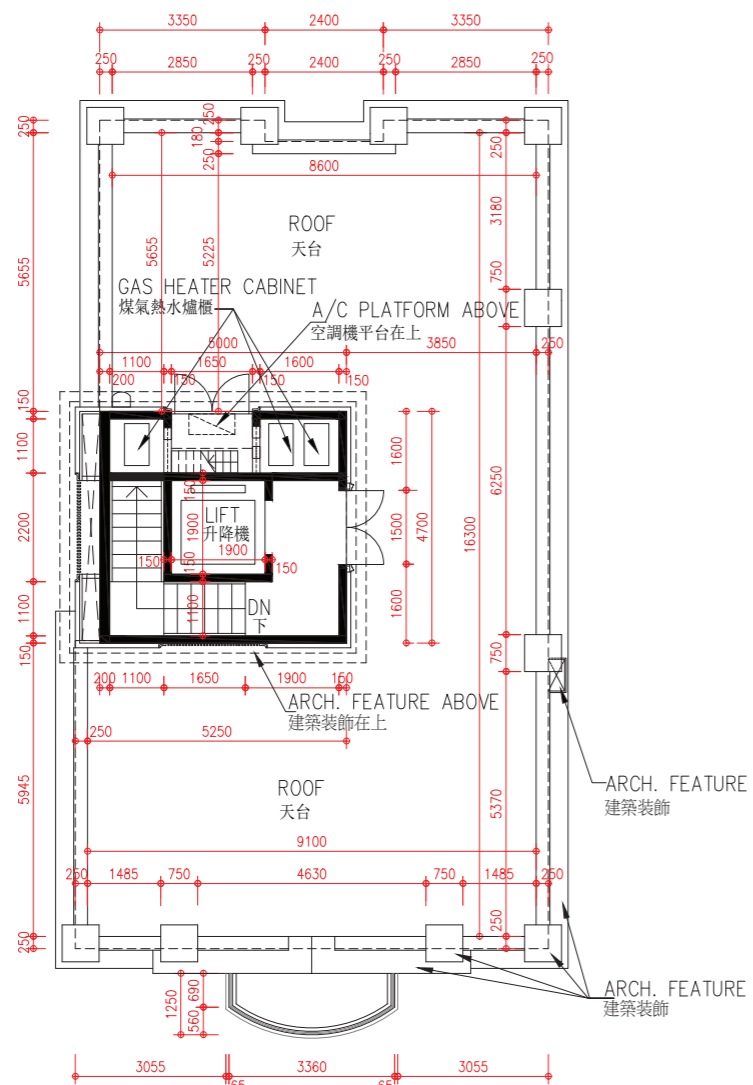


Scale 比例 : 0M 5M (米)

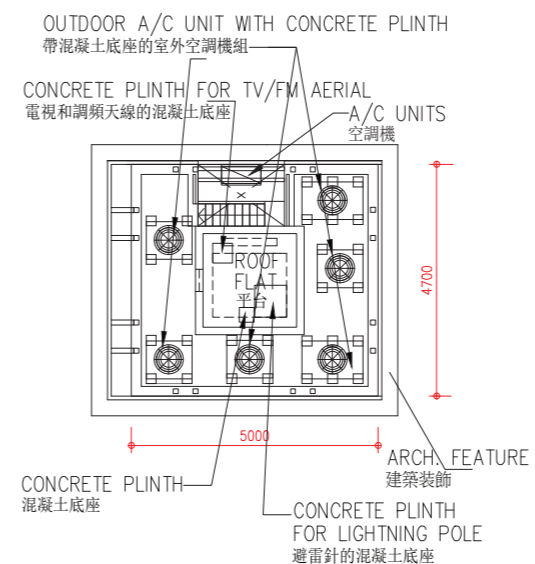
FLOOR PLANS OF RESIDENTIAL PROPERTIES IN THE DEVELOPMENT

發展項目的住宅物業的樓面平面圖

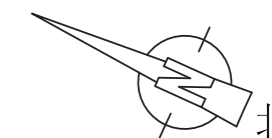
House D
洋房D



Roof Plan
天台平面圖



Upper Roof Plan
高層天台平面圖



Scale 比例: 0M ——— 5M (米)

Notes:
For the location of the roof, it was specified as flat roof in the general building plans of the Development approved by the Building Authority. In practice, it is a roof and its area is calculated under the roof.

備註:
有關天台的位置在該發展項目經建築事務監督批准的建築圖則上列為平台，實際上其用途為天台，其面積將以天台計算。

FLOOR PLANS OF RESIDENTIAL PROPERTIES IN THE DEVELOPMENT

發展項目的住宅物業的樓面平面圖

House D
洋房D

Floor 樓層	Thickness of Floor Slabs (Excluding Plaster) of House D (mm) 洋房D的樓板(不包括灰泥)的厚度(毫米)	Floor-to-Floor Height of House D (mm) 洋房D層與層之間的高度(毫米)
LG/F 低層地下	125, 150, 200	4060, 5400
G/F 地下	100, 125, 150, 225	4500
1/F 1樓	125, 150, 225	3500
2/F 2樓	100, 125, 150, 175, 200, 225	3500, 3750
R/F 天台	125	3250

Notes:

- The internal areas of the residential properties on the upper floors will generally be slightly larger than those on the lower floors because of the reducing thickness of the structural walls on the upper floors.
- The dimensions in floor plans are all in millimeter.
- Saleable area includes the areas of the filtration plant room, main meter room and relevant lift lobby at LG/F.
- The symbols of fittings and fixtures shown on the floor plans such as sink units, bathtubs, showerheads, toilets, drain points, cabinets, kitchen cabinets, doors, partitions, furring walls etc. are indications of their approximate locations only and not indications of their actual size, designs and shapes.

備註：

- 因住宅物業的較高樓層的結構牆的厚度遞減，較高樓層的內部面積，一般比較低樓層的內部面積稍大。
- 平面圖所列之數字為以毫米標示之尺寸。
- 實用面積包括低層地下的泳池過濾泵房、電掣房及相關升降機大堂。
- 平面圖上所顯示的形象裝置符號，例如洗滌盆、浴缸、沐浴花灑、座廁、去水位、櫃、廚櫃、門、間隔、飾面牆等只供展示其大約位置而非展示其實際大小、設計及形狀。