


FLOOR PLANS OF RESIDENTIAL PROPERTIES IN THE DEVELOPMENT

發展項目的住宅物業的樓面平面圖


Legend of Terms and Abbreviations used on floor plans 樓面平面圖中所使用名詞及簡稱之圖例

A. BAL. & U.P.	=	ACOUSTIC BALCONY & UTILITY PLATFORM	=	減音露台及工作平台	BATH	=	BATHROOM	=	浴室
A. BAL. AT 7/F – 17/F	=	ACOUSTIC BALCONY AT 7/F – 17/F	=	位於7樓至17樓的減音露台	BED RM.	=	BEDROOM	=	睡房
A.F.	=	ARCHITECTURAL FEATURE	=	建築裝飾	COVER OF BAL./U.P./A/C PLATFORM	=	COVER OF BALCONY, UTILITY PLATFORM & AIR-CONDITIONER PLATFORM	=	露台、工作平台及空調機平台蓋
A.F. ABOVE	=	ARCHITECTURAL FEATURE ABOVE	=	建築裝飾置上	DN	=	DOWN	=	下
A.W.	=	ACOUSTIC WINDOW	=	減音窗	ELECT. DUCT	=	ELECTRICAL DUCT	=	電錶槽
A.W. AT 7/F – 22/F	=	ACOUSTIC WINDOW AT 7/F – 22/F	=	位於7樓至22樓的減音窗	ELECT. METER CABINET	=	ELECTRICAL METER CABINET	=	電錶櫃
A.W. AT 7/F – 25/F	=	ACOUSTIC WINDOW AT 7/F – 25/F	=	位於7樓至25樓的減音窗	ELV. DUCT	=	EXTRA LOW VOLTAGE DUCT	=	特低電壓電線槽
A.W. AT 7/F – 27/F	=	ACOUSTIC WINDOW AT 7/F – 27/F	=	位於7樓至27樓的減音窗	F.H.	=	FIRE HYDRANT	=	消防栓
A.W. AT 7/F – 28/F	=	ACOUSTIC WINDOW AT 7/F – 28/F	=	位於7樓至28樓的減音窗	F.S. WATER TANK & PUMP RM.	=	FIRE SERVICE WATER TANK & PUMP ROOM	=	消防水缸及泵房
A/C PLATFORM	=	AIR-CONDITIONER PLATFORM	=	空調機平台	FLAT ROOF	=		=	平台
ALUMINUM CLADDING	=		=	鋁覆蓋板	GLASS RAILING	=		=	玻璃欄杆
BAL. & U.P.	=	BALCONY & UTILITY PLATFORM	=	露台及工作平台	H.R.	=	HOSE REEL	=	消防喉轆
BAL., U.P. & A.C.P. ABOVE	=	BALCONY, UTILITY PLATFORM & AIR-CONDITIONER PLATFORM ABOVE	=	露台、工作平台及空調機平台置上	H.R. AT H/L.	=	HOSE REEL AT HIGH LEVEL	=	消防喉轆在高位
					LIFT L1	=		=	升降機L1
					LIFT L2	=		=	升降機L2

Remarks applicable to the floor plans of this section:

- There may be architectural features and/or exposed pipes on external walls of some floors.
- Common pipes exposed and/or enclosed in cladding are located at/adjacent to balcony and/or utility platform and/or air-conditioner platform and/or external wall of some units.
-  Black dotted line in a residential unit delineated the extent of open kitchen area.
- There are bulkheads or false ceilings at the living room/ dining room, bedroom, bathroom and open kitchen for the air-conditioning system and/or mechanical and electrical services.
- Symbols of fittings and fitments shown on the floor plans, such as sink, water closet, shower and sink counter etc. are retrieved from the latest approved building plans and are for general indication only.
- Balconies and utility platforms are non-enclosed area.
- The air-conditioner platform(s) outside the unit will be placed with split type air-conditioner (outdoor unit)(s) belonging to that unit.

適用於本節各樓面平面圖之附註：

- 部分樓層外牆設有建築裝飾及/或外露喉管。
- 部分單位的露台及/或工作平台及/或空調機平台及/或外牆或其鄰近地方設有外露及/或內藏於飾板的公用喉管。
-  住宅單位內所顯示的黑色虛線代表開放式廚房範圍。
- 單位客廳/飯廳、睡房、浴室及開放式廚房之裝飾橫樑或假天花內裝置有冷氣及/或其他機電設備。
- 樓面平面圖上所顯示的形象裝置符號，例如洗滌盤、坐廁、企缸、洗滌盤櫃等乃摘自最新的經批准的建築圖則，只作一般性標誌。
- 露台及工作平台為不可封閉的地方。
- 空調機平台將會放置屬於其單位的一部或多部分體式冷氣機(室外機)。


FLOOR PLANS OF RESIDENTIAL PROPERTIES IN THE DEVELOPMENT

發展項目的住宅物業的樓面平面圖

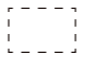
Legend of Terms and Abbreviations used on floor plans 樓面平面圖中所使用名詞及簡稱之圖例

LIFT LOBBY	=	升降機大堂	R.C. A.F.	=	REINFORCED CONCRETE ARCHITECTURAL FEATURE	=	鋼筋混凝土建築裝飾
LIFT OVER-RUN	=	升降機機廂槽	R.C. PLINTH FOR A/C	=	REINFORCED CONCRETE PLINTH FOR AIR-CONDITIONER	=	鋼筋混凝土底座給空調機
LIV./DIN.	=	LIVING ROOM/ DINING ROOM	R.S. & M.R.	=	REFUSE STORAGE & MATERIAL RECOVERY ROOM	=	垃圾及物料回收室
M.C. AT 10/F, 16/F, 20/F & 25/F ONLY	=	METAL CLADDING AT 10/F, 16/F, 20/F & 25/F ONLY	RAIN WATER RECYCLING PLANT RM.	=	RAIN WATER RECYCLING PLANT ROOM	=	雨水循環利用機房
METAL A.F./M.C.	=	METAL ARCHITECTURAL FEATURE/METAL CLADDING	ROOF	=		=	天台
METAL A.F. WITH M.C.	=	METAL ARCHITECTURAL FEATURE WITH METAL CLADDING	S.A.M.	=	SOUND ABSORPTION MATERIAL	=	減音物料
METAL A.F./M.C. AT 10/F, 16/F, 20/F & 25/F ONLY	=	METAL ARCHITECTURAL FEATURE/METAL CLADDING AT 10/F, 16/F, 20/F & 25/F ONLY	S.A.M. AT 7/F – 17/F, M.C. AT 18/F – 28/F	=	SOUND ABSORPTION MATERIAL AT 7/F – 17/F, METAL CLADDING AT 18/F – 28/F	=	位於7樓至17樓的減音物料，位於18樓至28樓的金屬面板
METAL A.F./M.C. AT 8/F, 12/F, 18/F, 22/F & 27/F ONLY	=	METAL ARCHITECTURAL FEATURE/METAL CLADDING AT 8/F, 12/F, 18/F, 22/F & 27/F ONLY	SINK	=		=	洗滌盆
METAL GRILLE	=	金屬格柵	STUDY	=	STUDY ROOM	=	書房
OPEN FLAT ROOF (COMMON AREA)	=	開放平台(公共地方)	UP	=		=	上
OPEN KIT.	=	OPEN KITCHEN	WATER METER CABINET	=		=	水錶櫃
P.D.	=	PIPE DUCT		=	Built-in fittings provided in the units	=	隨樓附送嵌入式裝置
POTABLE & FLUSHING WATER TANK & PUMP RM.	=	POTABLE & FLUSHING WATER TANK & PUMP ROOM		=	Common Access by Gondola for Pipe Duct Maintenance	=	吊船維修管井用的公共通道

Remarks applicable to the floor plans of this section:

- There may be architectural features and/or exposed pipes on external walls of some floors.
- Common pipes exposed and/or enclosed in cladding are located at/adjacent to balcony and/or utility platform and/or air-conditioner platform and/or external wall of some units.
-  Black dotted line in a residential unit delineated the extent of open kitchen area.
- There are bulkheads or false ceilings at the living room/ dining room, bedroom, bathroom and open kitchen for the air-conditioning system and/or mechanical and electrical services.
- Symbols of fittings and fitments shown on the floor plans, such as sink, water closet, shower and sink counter etc. are retrieved from the latest approved building plans and are for general indication only.
- Balconies and utility platforms are non-enclosed area.
- The air-conditioner platform(s) outside the unit will be placed with split type air-conditioner (outdoor unit)(s) belonging to that unit.

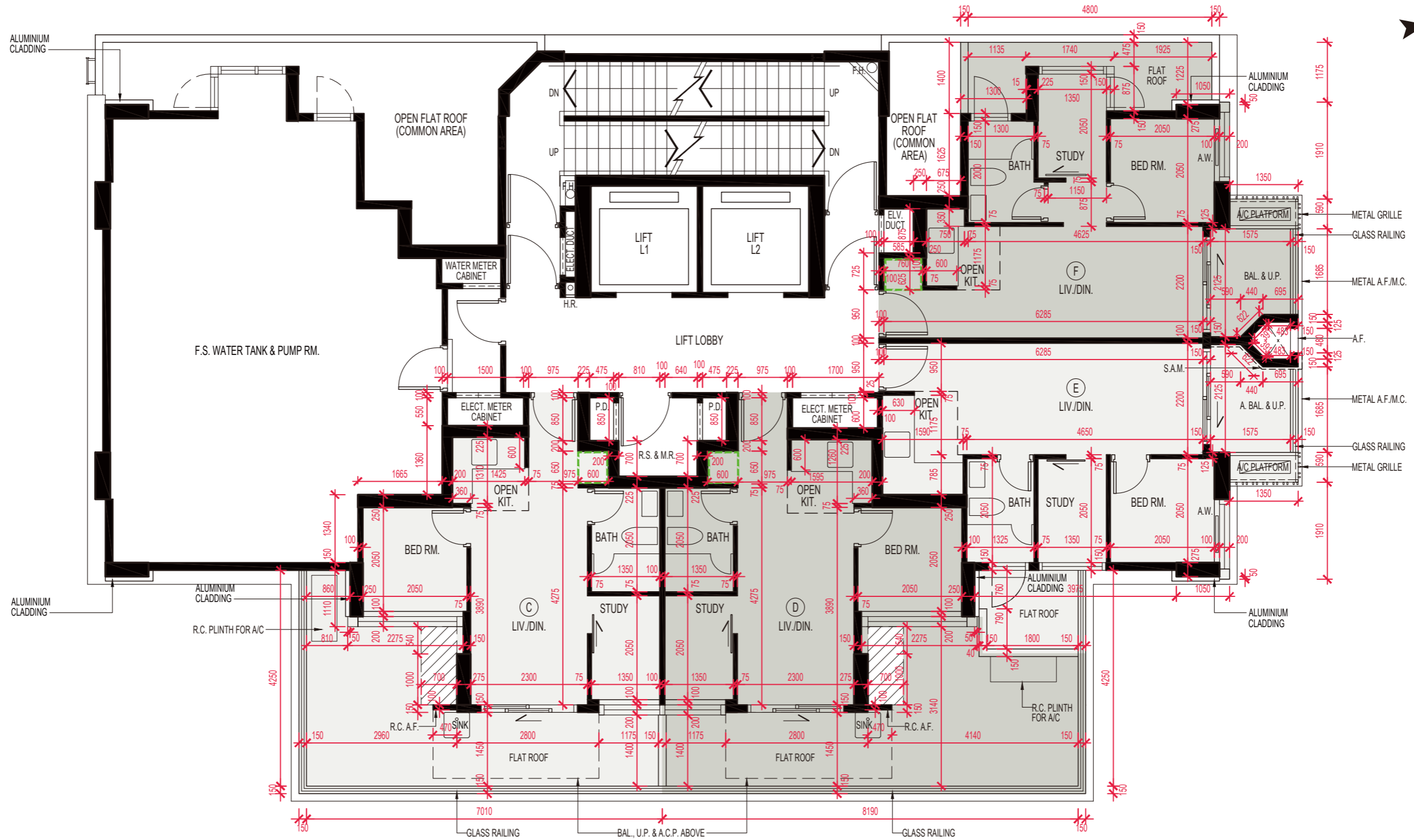
適用於本節各樓面平面圖之附註：

- 部分樓層外牆設有建築裝飾及/或外露喉管。
- 部分單位的露台及/或工作平台及/或空調機平台及/或外牆或其鄰近地方設有外露及/或內藏於飾板的公用喉管。
-  住宅單位內所顯示的黑色虛線代表開放式廚房範圍。
- 單位客廳/飯廳、睡房、浴室及開放式廚房之裝飾橫樑或假天花內裝置有冷氣及/或其他機電設備。
- 樓面平面圖上所顯示的形象裝置符號，例如洗滌盤、坐廁、企缸、洗滌盤櫃等乃摘自最新的經批准的建築圖則，只作一般性標誌。
- 露台及工作平台為不可封閉的地方。
- 空調機平台將會放置屬於其單位的一部或多部分體式冷氣機(室外機)。

FLOOR PLANS OF RESIDENTIAL PROPERTIES IN THE DEVELOPMENT

發展項目的住宅物業的樓面平面圖

5/F
5樓



Notes:

1. The dimensions in the floor plans are all structural dimensions in millimeter.
2. Prospective purchasers should note the presence and location of certain common areas and common facilities ("the said Common Areas and Facilities", which for the purpose of identification only are shown by hatched black on the floor plans) within the flat roofs of Units C and D on 5/F. The manager of the Development has the rights of access and other relevant rights to and in respect of the said Common Areas and Facilities (including the relevant portion of airspace) under the Deed of Mutual Covenant and Management Agreement ("DMC") of the Development (including but not limited to the rights of the manager under clause 1(b) of Part B of Second Schedule to the DMC).

備註：

1. 樓面平面圖所列之數字為以毫米標示之建築結構尺寸。
2. 準買家應注意，5樓C及D單位的平台內的若干公用地方及公用設施（下稱「該等公用地方及設施」，為便於識別，於樓面平面圖上以黑色斜黑線標示）的存在及其位置。根據發展項目的公契及管理協議（「公契」），該發展項目的管理人對該等公用地方及設施（包括相關部分的空中空間）享有進出權及其他相關權利（包括但不限於公契附表二B部第1(b)條所賦予管理人的權利）。

Scale 比例： 0 2 4M(米)

FLOOR PLANS OF RESIDENTIAL PROPERTIES IN THE DEVELOPMENT

發展項目的住宅物業的樓面平面圖

Description 描述	Floor 樓層	Unit 單位			
		C	D	E	F
Floor-to-floor height of each residential property (mm) 每個住宅物業的層與層之間的高度(毫米)	5/F 5樓	3200, 3500	3200, 3500	3100, 3150, 3500	3150, 3500
The thickness of the floor slabs (excluding plaster) of each residential property (mm) 每個住宅物業的樓板(不包括灰泥)的厚度(毫米)		150, 175	150, 175	150, 175	150, 175, 200

The internal areas of the residential properties on the upper floors will generally be slightly larger than those on the lower floors because of the reducing thickness of the structural walls on the upper floors: Not applicable.

Remarks:

1. Please refer to page 22 to 23 of this sales brochure for legends of terms, abbreviations shown on the above floor plans and the remarks that are applicable thereto.
2. The floor of 4/F, 13/F, 14/F and 24/F are omitted.
3. The 100mm thick and 75mm thick walls within the residential units are non-structural partition walls.

因住宅物業較高樓層的結構牆厚度遞減，較高樓層的內部面積，一般比較低樓層的內部面積稍大：不適用。

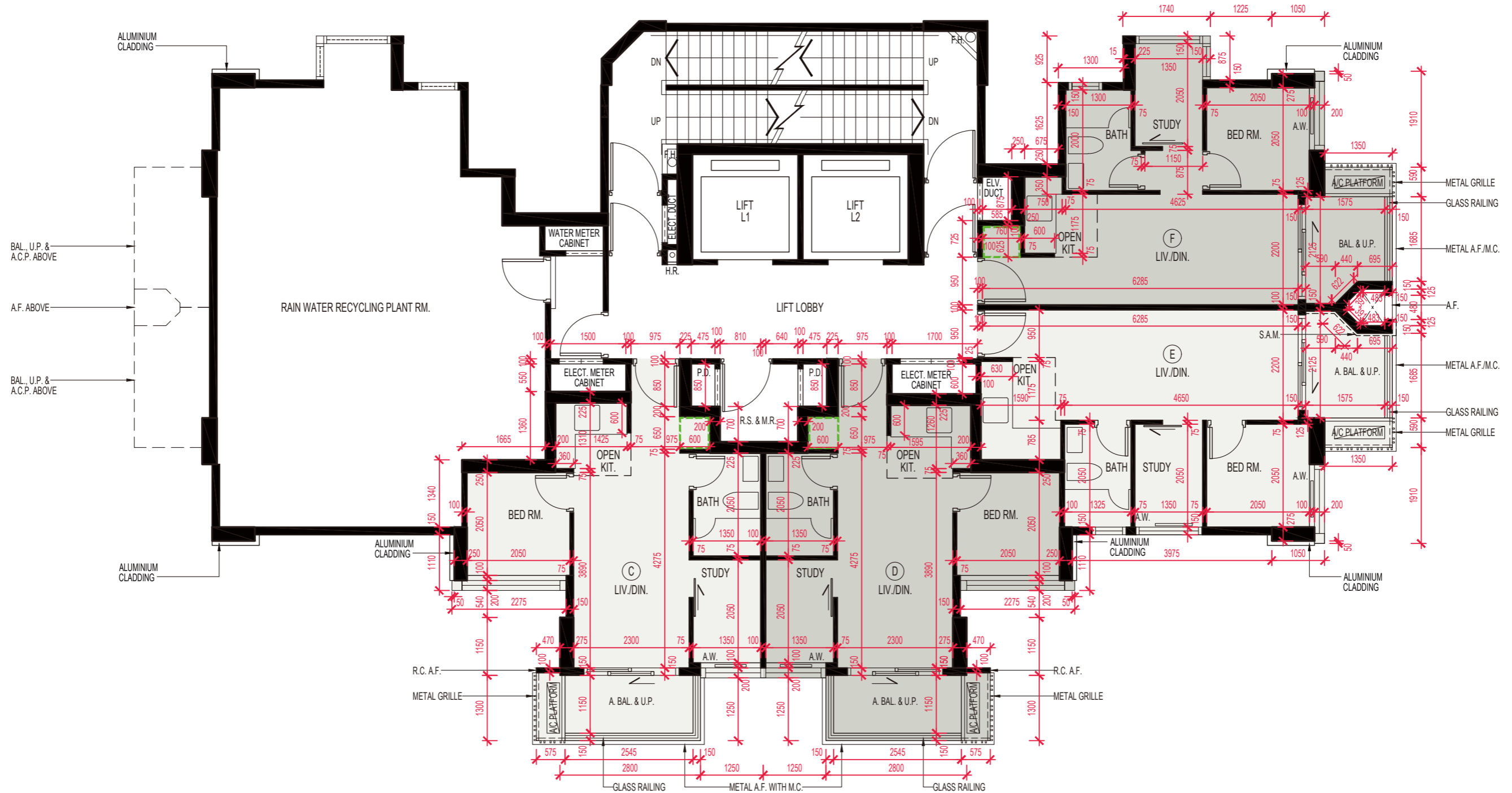
備註：

1. 樓面平面圖中顯示的名詞、簡稱及其適用之備註，請參閱本售樓說明書第22至23頁。
2. 樓面不設4樓、13樓、14樓及24樓。
3. 住宅單位內的100毫米厚及75毫米厚的牆均為非結構性間隔牆。

FLOOR PLANS OF RESIDENTIAL PROPERTIES IN THE DEVELOPMENT

發展項目的住宅物業的樓面平面圖

6/F
6樓



Note : The dimensions in the floor plans are all structural dimensions in millimeter.
備註：樓面平面圖所列之數字為以毫米標示之建築結構尺寸。

Scale 比例：0 2 4M(米)

FLOOR PLANS OF RESIDENTIAL PROPERTIES IN THE DEVELOPMENT

發展項目的住宅物業的樓面平面圖

Description 描述	Floor 樓層	Unit 單位			
		C	D	E	F
Floor-to-floor height of each residential property (mm) 每個住宅物業的層與層之間的高度(毫米)	6/F 6樓	3500	3500	3500	3500
The thickness of the floor slabs (excluding plaster) of each residential property (mm) 每個住宅物業的樓板(不包括灰泥)的厚度(毫米)		150, 175	150, 175	150, 175	150, 175, 200

The internal areas of the residential properties on the upper floors will generally be slightly larger than those on the lower floors because of the reducing thickness of the structural walls on the upper floors: Not applicable.

Remarks:

1. Please refer to page 22 to 23 of this sales brochure for legends of terms, abbreviations shown on the above floor plans and the remarks that are applicable thereto.
2. The floor of 4/F, 13/F, 14/F and 24/F are omitted.
3. The 100mm thick and 75mm thick walls within the residential units are non-structural partition walls.

因住宅物業較高樓層的結構牆厚度遞減，較高樓層的內部面積，一般比較低樓層的內部面積稍大：不適用。

備註：

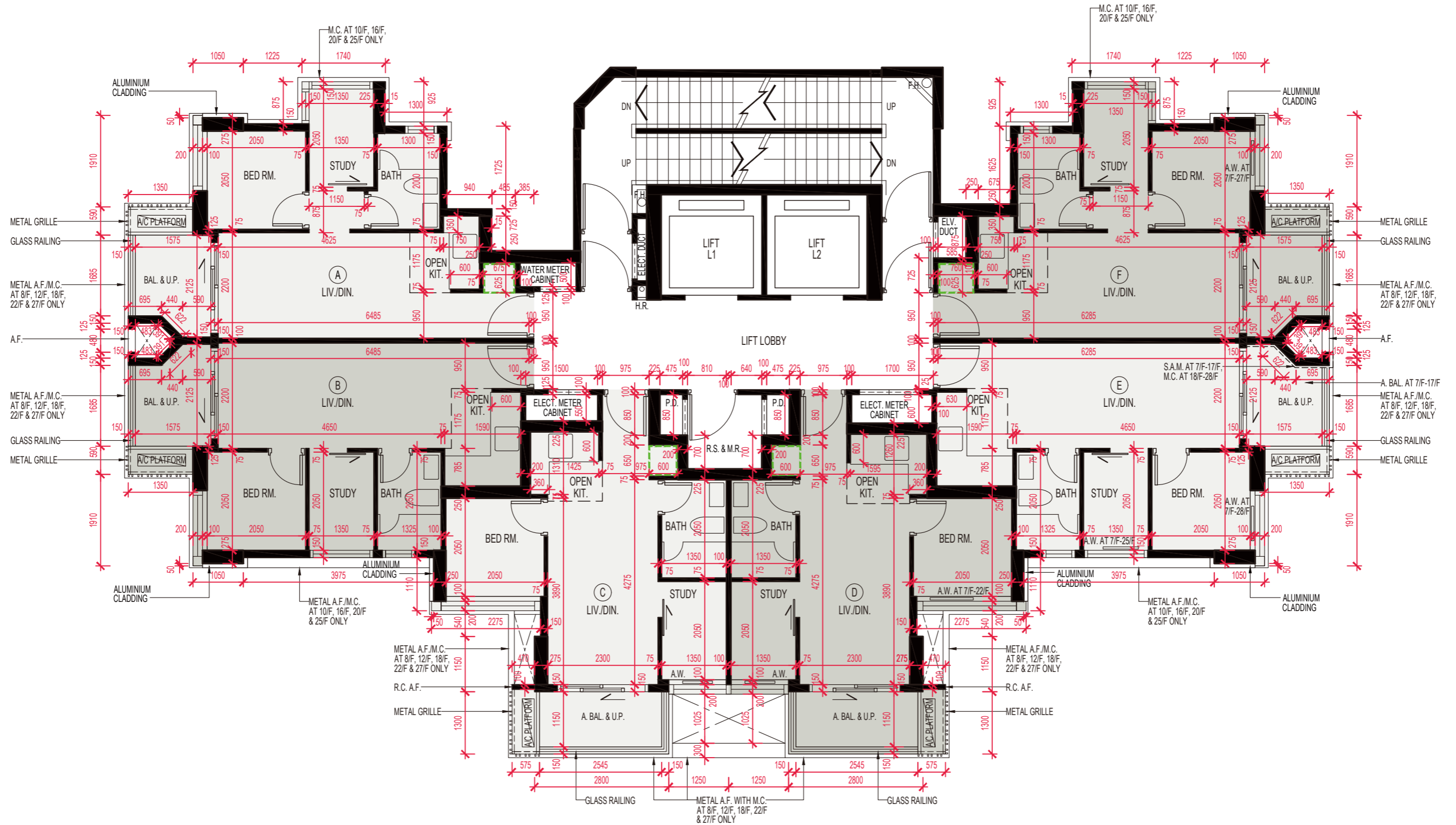
1. 樓面平面圖中顯示的名詞、簡稱及其適用之備註，請參閱本售樓說明書第22至23頁。
2. 樓面不設4樓、13樓、14樓及24樓。
3. 住宅單位內的100毫米厚及75毫米厚的牆均為非結構性間隔牆。

FLOOR PLANS OF RESIDENTIAL PROPERTIES IN THE DEVELOPMENT

發展項目的住宅物業的樓面平面圖

7/F - 12/F, 15/F - 23/F & 25/F - 28/F

7樓至12樓、15樓至23樓及25樓至28樓



Note : The dimensions in the floor plans are all structural dimensions in millimeter.

備註：樓面平面圖所列之數字為以毫米標示之建築結構尺寸。

Scale 比例：0 2 4M(米)

FLOOR PLANS OF RESIDENTIAL PROPERTIES IN THE DEVELOPMENT

發展項目的住宅物業的樓面平面圖

Description 描述	Floor 樓層	Unit 單位					
		A	B	C	D	E	F
Floor-to-floor height of each residential property (mm) 每個住宅物業的層與層之間的高度(毫米)	7/F – 12/F, 15/F – 23/F & 25/F – 27/F 7樓至12樓、 15樓至23樓及 25樓至27樓	3500	3500	3500	3500	3500	3500
The thickness of the floor slabs (excluding plaster) of each residential property (mm) 每個住宅物業的樓板(不包括灰泥)的厚度(毫米)		150, 175, 200	150, 175	150, 175	150, 175	150, 175	150, 175, 200
Floor-to-floor height of each residential property (mm) 每個住宅物業的層與層之間的高度(毫米)	28/F 28樓	4000, 4350	4000, 4350, 4400	4000, 4250, 4300, 4550	4000, 4250, 4300, 4550	4000, 4250, 4350, 4600, 4650	4000, 4250, 4350
The thickness of the floor slabs (excluding plaster) of each residential property (mm) 每個住宅物業的樓板(不包括灰泥)的厚度(毫米)		150, 175, 200	150, 175	150, 175	150, 175	150, 175, 425	150, 175, 200, 425

The internal areas of the residential properties on the upper floors will generally be slightly larger than those on the lower floors because of the reducing thickness of the structural walls on the upper floors: Not applicable.

Remarks:

- Please refer to page 22 to 23 of this sales brochure for legends of terms, abbreviations shown on the above floor plans and the remarks that are applicable thereto.
- The floor of 4/F, 13/F, 14/F and 24/F are omitted.
- The 100mm thick and 75mm thick walls within the residential units are non-structural partition walls.

因住宅物業較高樓層的結構牆厚度遞減，較高樓層的內部面積，一般比較低樓層的內部面積稍大：不適用。

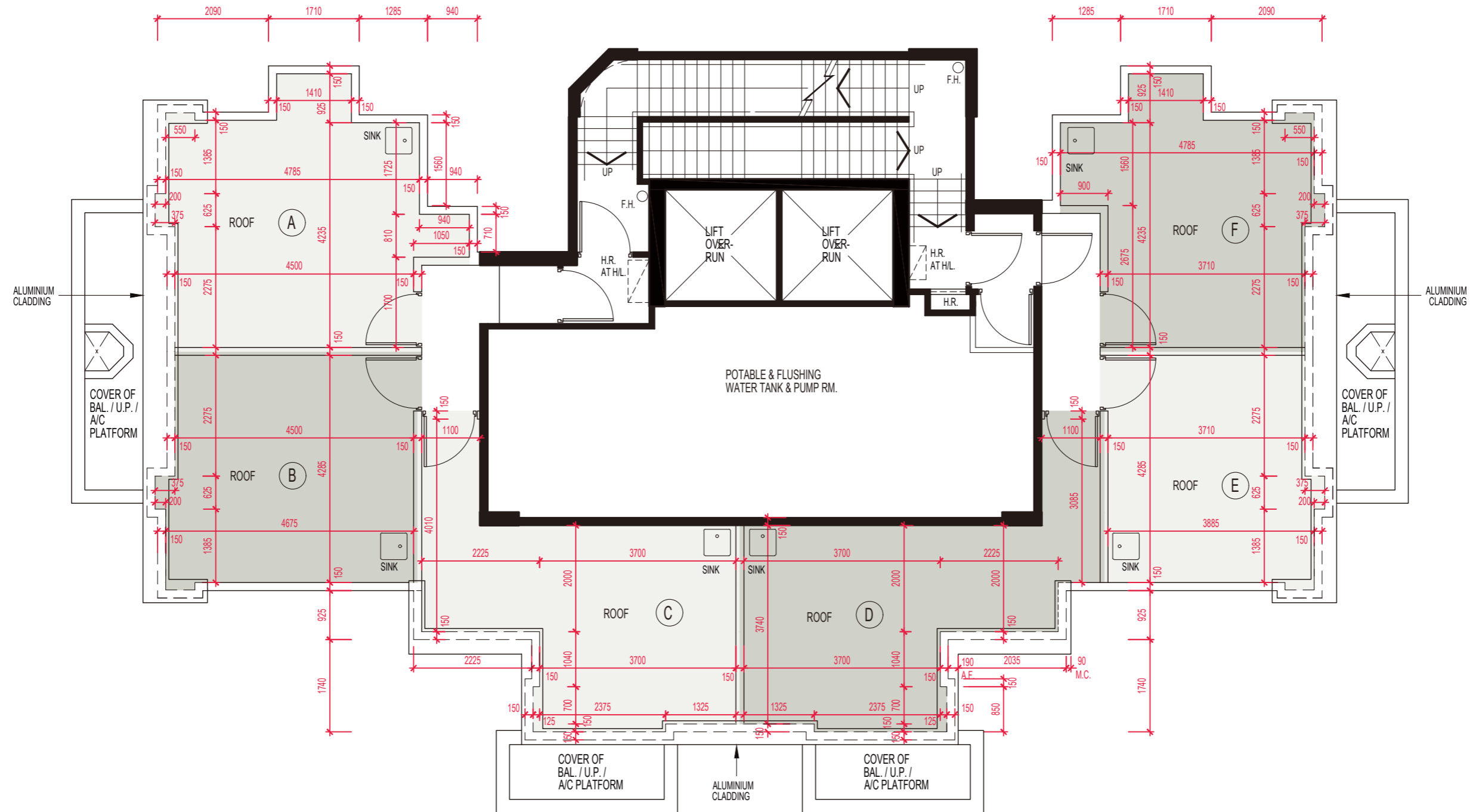
備註：

- 樓面平面圖中顯示的名詞、簡稱及其適用之備註，請參閱本售樓說明書第22至23頁。
- 樓面不設4樓、13樓、14樓及24樓。
- 住宅單位內的100毫米厚及75毫米厚的牆均為非結構性間隔牆。

FLOOR PLANS OF RESIDENTIAL PROPERTIES IN THE DEVELOPMENT

發展項目的住宅物業的樓面平面圖

ROOF
天台



Note : The dimensions in the floor plans are all structural dimensions in millimeter.
備註：樓面平面圖所列之數字為以毫米標示之建築結構尺寸。

Scale 比例：0 2 4M(米)

FLOOR PLANS OF RESIDENTIAL PROPERTIES IN THE DEVELOPMENT

發展項目的住宅物業的樓面平面圖

Description 描述	Floor 樓層	Unit 單位					
		A	B	C	D	E	F
Floor-to-floor height of each residential property (mm) 每個住宅物業的層與層之間的高度(毫米)	Roof 天台	Not Applicable 不適用	Not Applicable 不適用	Not Applicable 不適用	Not Applicable 不適用	Not Applicable 不適用	Not Applicable 不適用
The thickness of the floor slabs (excluding plaster) of each residential property (mm) 每個住宅物業的樓板(不包括灰泥)的厚度(毫米)		Not Applicable 不適用	Not Applicable 不適用	Not Applicable 不適用	Not Applicable 不適用	Not Applicable 不適用	Not Applicable 不適用

The internal areas of the residential properties on the upper floors will generally be slightly larger than those on the lower floors because of the reducing thickness of the structural walls on the upper floors: Not applicable.

Remarks:

- Please refer to page 22 to 23 of this sales brochure for legends of terms, abbreviations shown on the above floor plans and the remarks that are applicable thereto.
- The floor of 4/F, 13/F, 14/F and 24/F are omitted.

因住宅物業較高樓層的結構牆厚度遞減，較高樓層的內部面積，一般比較低樓層的內部面積稍大：不適用。

備註：

- 樓面平面圖中顯示的名詞、簡稱及其適用之備註，請參閱本售樓說明書第22至23頁。
- 樓面不設4樓、13樓、14樓及24樓。