

# Floor plans of residential properties in the development

## 發展項目的住宅物業的樓面平面圖

Remarks applicable to the floor plans in this section:

1. There are architectural features and/or metal grilles and/or exposed pipes on the external walls of some of the floors. For details, please refer to the latest approved building plans and/or approved drainage plans and/or other relevant plans.
2. Common pipes exposed and/or enclosed in cladding are located at/ adjacent to the balcony and/or utility platform and/or air-conditioner platform and/or private flat roof and/or external wall of some residential properties. For details, please refer to the latest approved building plans and/or approved drainage plans and/or other relevant plans.
3. There are sunken slabs for mechanical and electrical services and/or false ceiling/ bulkheads for the air-conditioning fittings and/or mechanical and electrical services at some residential properties.
4. There may be exposed pipes installed in some bathrooms.
5. There are pipes enclosed by the fittings and finishes in some residential properties. For details, please refer to the latest approved drainage plans and/or other relevant plans.
6. There may be exposed pipes located at the upper part of some balconies, utility platforms, air-conditioner platforms and private flat roofs.
7. Balconies, utility platforms and air-conditioner platforms are non-enclosed areas.
8. The ceiling height of some residential properties may vary due to structural, architectural and/or decoration design variations.
9. During the necessary maintenance of the external walls of towers arranged by Manager of the Development, suspended working platform will be operating in the airspace outside windows and/ or above private flat roof of the residential properties of such tower.
10. Symbols of fittings and fitments such as bathtub, wash basin, water closet, shower cubicle, sink counter, cabinet (if any) etc. in the floor plans are prepared in accordance with the latest approved building plans and are for general indication only. Their shapes, dimensions and scales may differ from the fittings and fitments actually provided.

適用於本節之樓面平面圖之備註：

1. 部分樓層外牆範圍設有建築裝飾及 / 或金屬格柵及 / 或外露喉管。詳細資料請參考最新經批准的建築圖則及 / 或經批准的排水設施圖則及 / 或其他相關圖則。
2. 部分住宅物業的露台及 / 或工作平台及 / 或空調機平台及 / 或私人平台及 / 或外牆上 / 附近設有外露及 / 或飾面板內藏之公用喉管。詳細資料請參考最新經批准的建築圖則及 / 或經批准的排水設施圖則及 / 或其他相關圖則。
3. 部分住宅物業有用以安裝機電設備的跌級樓板及 / 或用以裝置空調裝備及 / 或其他機電設備的假天花 / 裝飾橫樑。
4. 部分浴室內可能裝有外露喉管。
5. 部分住宅物業於裝置及裝修物料內設有喉管。詳細資料請參考最新經批准的排水設施圖則及 / 或其他相關圖則。
6. 部分露台、工作平台、空調機平台及私人平台上可能裝有外露喉管。
7. 露台、工作平台及空調機平台為不可封閉的地方。
8. 部分住宅物業之天花高度將會因應結構、建築設計及 / 或裝修設計上的需要有差異。
9. 在發展項目管理人安排於大廈外牆之必要維修進行期間，吊船將在該大廈的住宅物業之窗戶外及 / 或私人平台上之上空運作。
10. 樓面平面圖上所顯示的裝置符號，如浴缸、洗手盆、坐廁、淋浴間、洗滌盆、櫃（如有）等乃按最新經批准的建築圖則擬備，只作一般示意用途。其形狀、尺寸、比例或與實際提供的裝置及設備存在差異。

### Legend for floor plans of residential properties in the Development

#### 發展項目的住宅物業的樓面平面圖圖例

AIR-CONDITIONER PLATFORM = Air-conditioner Platform 空調機平台

AIR-CONDITIONER PLATFORM & BAL. & U.P. ABOVE =  
Air-conditioner Platform & Balcony & Utility Platform above 空調機平台及露台及工作平台在上方

A.F. = Architectural Feature 建築裝飾

BAL. = Balcony 露台

BATH. = Bathroom 浴室

BEDROOM = Bedroom 睡房

DN. = Down 下

E.M.C. = Electrical Meter Cabinet 電錶櫃

H.R. AT H/L = Hose Reel at High Level 消防喉轆在高位

LIFT = Lift 升降機

LIFT LOBBY = Lift Lobby 升降機大堂

LIV./DIN. = Living / Dining Room 客 / 飯廳

MAINTENANCE FLAT ROOF = Maintenance Flat Roof 維修平台

OPEN KIT. = Open Kitchen 開放式廚房

P.D. = Pipe Duct 管道槽

PRIVATE FLAT ROOF = Private Flat Roof 私人平台

TOP OF AIR-CONDITIONER PLATFORM & BAL. & U.P. BELOW =  
Top of Air-conditioner Platform & Balcony & Utility Platform below 下方空調機平台、露台及工作平台的頂部

W.M.C. = Water Meter Cabinet 水錶櫃

W.M.R. = Water Meter Room 水錶房

UP = Up 上

U.P. = Utility Platform 工作平台

## Floor plans of residential properties in the development 發展項目的住宅物業的樓面平面圖

3/F  
3樓

Description 描述	Unit 單位			
	A	B	C	D
Floor-to-floor height (refers to the height between the top surface of the structural slab of a floor and the top surface of the structural slab of its immediate upper floor) of each residential property (m) 每個住宅物業的層與層之間的高度 (指該樓層之石屎地台面與上一層石屎地台面之高度距離) (米)	3.150 3.150 ◇ 3.150 ⇨	2.900 ◎ 3.150 3.150 ◇ 3.150 ⊕ 3.150 ☆	2.900 ◎ 3.150 3.150 ◇ 3.150 ⊕ 3.150 ☆ 3.500 ☆	3.150 3.150 ◇ 3.150 ⇨
Thickness of the floor slabs (excluding plaster) of each residential property (mm) 每個住宅物業的樓板 (不包括灰泥) 厚度 (毫米)	150	150 175		150

The internal areas of the residential properties on the upper floors will generally be slightly larger than those on the lower floors because of the reducing thickness of the structural walls on the upper floors. (This statement does not apply to the residential properties in the Development because the design of the Development is such that the reducing thickness of the structural walls of residential properties on the upper floors does not increase the internal areas of those residential properties.)

因住宅物業的較高樓層的結構牆的厚度遞減，較高樓層的內部面積，一般比較低樓層的內部面積稍大。(不適用於發展項目內的住宅物業，因為發展項目的設計是較高樓層的住宅物業的結構牆的厚度遞減不會增加該等住宅物業的內部面積。)

Remarks:

- The dimensions in the floor plans are all structural dimensions in millimetre and rounded off to the nearest integer.
- Please refer to Page 23 of this sales brochure for legend of the terms and abbreviations shown in the floor plans.
- The floor-to-floor height (i.e. the height between the top surface of the structural slab of that floor and the top surface of the structured slab of its immediate upper floor) includes, without limitation:
  - (◇) Inclusive of the sunken depth of the sunken slab on the floor of that floor (0.075m);
  - (◎) Inclusive of the sunken depth of the sunken slab on the floor of that floor (0.250m);
  - (⊕) Inclusive of the sunken depth of the sunken slab on the floor of that floor (0.280m);
  - (☆) Inclusive of the sunken depth of the sunken slab on the floor of that floor (0.350m);
  - (⇨) Inclusive of the sunken depth of the sunken slab on the floor of that floor (0.400m);
 those sunken slabs located partly on the structural slab of that floor or its immediate upper floor.

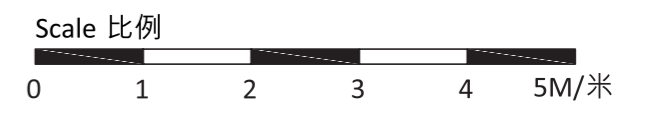
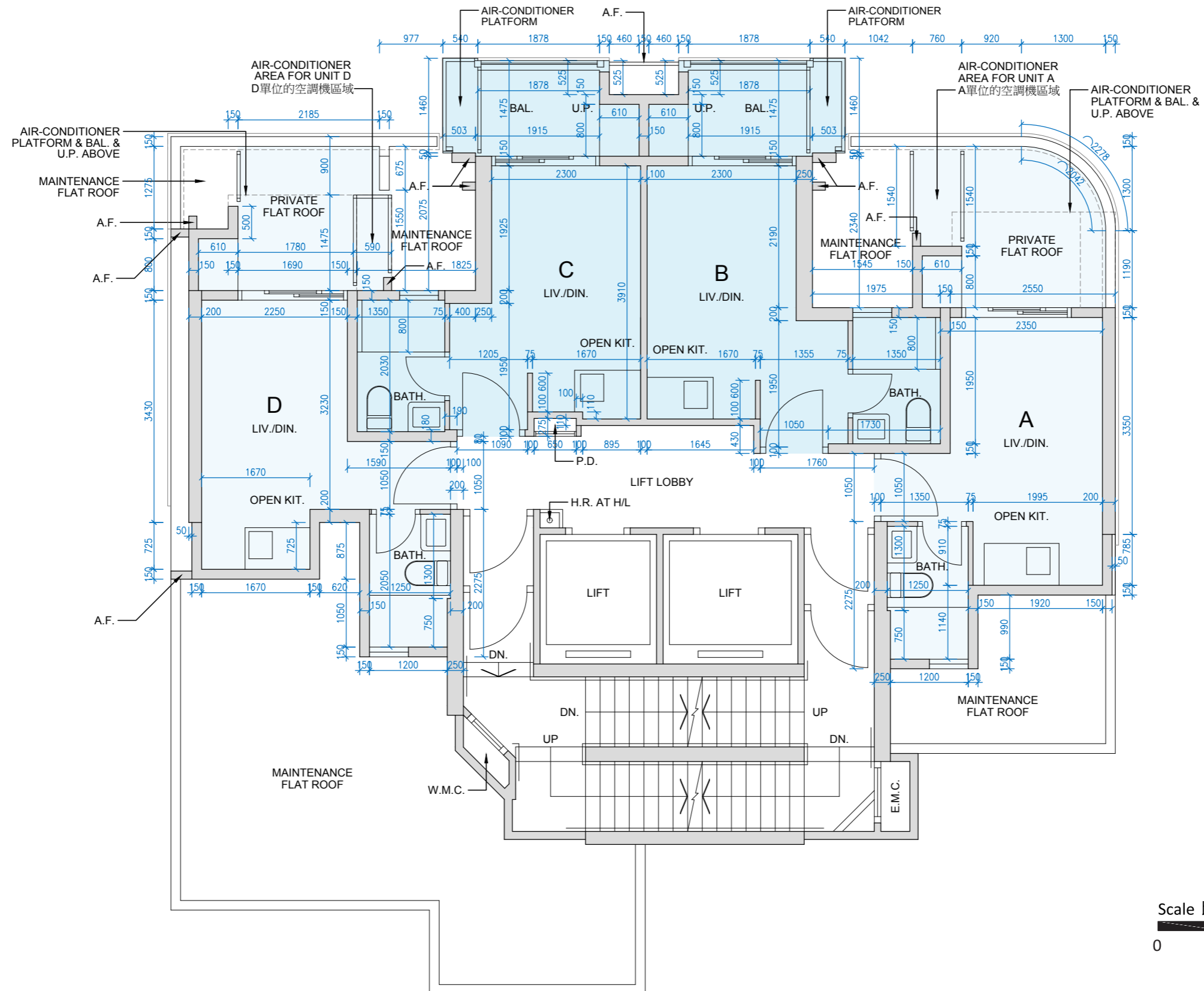
備註：

- 樓面平面圖所列數字為以毫米標示之建築結構尺寸，並以四捨五入至整數。
- 樓面平面圖中顯示之名詞及簡稱之圖例，請參閱本售樓說明書第 23 頁。
- 層與層之間的高度（指該樓層之石屎地台面與上一層石屎地台面之高度距離）包括但不限於：
  - (◇) 當中在該樓層跌級樓板為 0.075 米的跌級高度；
  - (◎) 當中在該樓層跌級樓板為 0.250 米的跌級高度；
  - (⊕) 當中在該樓層跌級樓板為 0.280 米的跌級高度；
  - (☆) 當中在該樓層跌級樓板為 0.350 米的跌級高度；
  - (⇨) 當中在該樓層跌級樓板為 0.400 米的跌級高度；
 該等跌級樓板有部分位於該樓層或上一層之石屎地台面。

# Floor plans of residential properties in the development

## 發展項目的住宅物業的樓面平面圖

3/F  
3樓



## Floor plans of residential properties in the development 發展項目的住宅物業的樓面平面圖

### 5/F - 10/F 5樓至10樓

Description 描述	Floor 樓層	Unit 單位			
		A	B	C	D
Floor-to-floor height (refers to the height between the top surface of the structural slab of a floor and the top surface of the structural slab of its immediate upper floor) of each residential property (m) 每個住宅物業的層與層之間的高度 (指該樓層之石屎地台面與上一層石屎地台面之高度距離) (米)	5/F - 9/F 5樓至9樓	3.150 3.150 ◇ 3.150 ⇨	3.150 3.150 ◇ 3.150 ◎ 3.150 ⊕ 3.150 ☆	3.150 3.150 ◇ 3.150 ◎ 3.150 ⊕ 3.150 ☆	3.150 3.150 ◇ 3.150 ⇨
Thickness of the floor slabs (excluding plaster) of each residential property (mm) 每個住宅物業的樓板 (不包括灰泥) 厚度 (毫米)	(5 Storeys) (5層)	150	150 175		150
Floor-to-floor height (refers to the height between the top surface of the structural slab of a floor and the top surface of the structural slab of its immediate upper floor) of each residential property (m) 每個住宅物業的層與層之間的高度 (指該樓層之石屎地台面與上一層石屎地台面之高度距離) (米)	10/F 10樓	3.150 3.150 ◇ 3.150 ⇨	2.900 ◎ 3.150 3.225 ◇ 3.400 ◎ 3.430 ⊕ 3.500 ☆	2.800 ☆ 2.870 ⊕ 3.075 ◇ 3.150 3.225 ◇ 3.400 ◎ 3.430 ⊕ 3.500 ☆	3.150 3.150 ◇ 3.150 ⇨
Thickness of the floor slabs (excluding plaster) of each residential property (mm) 每個住宅物業的樓板 (不包括灰泥) 厚度 (毫米)	(1 Storey) (1層)	150	150 175	150	

The internal areas of the residential properties on the upper floors will generally be slightly larger than those on the lower floors because of the reducing thickness of the structural walls on the upper floors. (This statement does not apply to the residential properties in the Development because the design of the Development is such that the reducing thickness of the structural walls of residential properties on the upper floors does not increase the internal areas of those residential properties.)

因住宅物業的較高樓層的結構牆的厚度遞減，較高樓層的內部面積，一般比較低樓層的內部面積稍大。(不適用於發展項目內的住宅物業，因為發展項目的設計是較高樓層的住宅物業的結構牆的厚度遞減不會增加該等住宅物業的內部面積。)

#### Remarks:

- The dimensions in the floor plans are all structural dimensions in millimetre and rounded off to the nearest integer.
- Please refer to Page 23 of this sales brochure for legend of the terms and abbreviations shown in the floor plans.
- The floor-to-floor height (i.e. the height between the top surface of the structural slab of that floor and the top surface of the structured slab of its immediate upper floor) includes, without limitation:
  - (◇) Inclusive of the sunken depth of the sunken slab on the floor of that floor (0.075m);
  - (◎) Inclusive of the sunken depth of the sunken slab on the floor of that floor (0.250m);
  - (⊕) Inclusive of the sunken depth of the sunken slab on the floor of that floor (0.280m),
  - (☆) Inclusive of the sunken depth of the sunken slab on the floor of that floor (0.350m);
  - (⇨) Inclusive of the sunken depth of the sunken slab on the floor of that floor (0.400m);
 those sunken slabs located partly on the structural slab of that floor or its immediate upper floor.

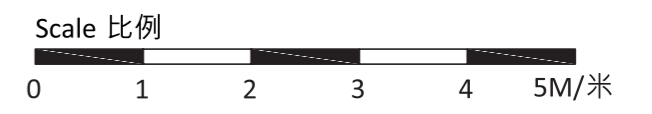
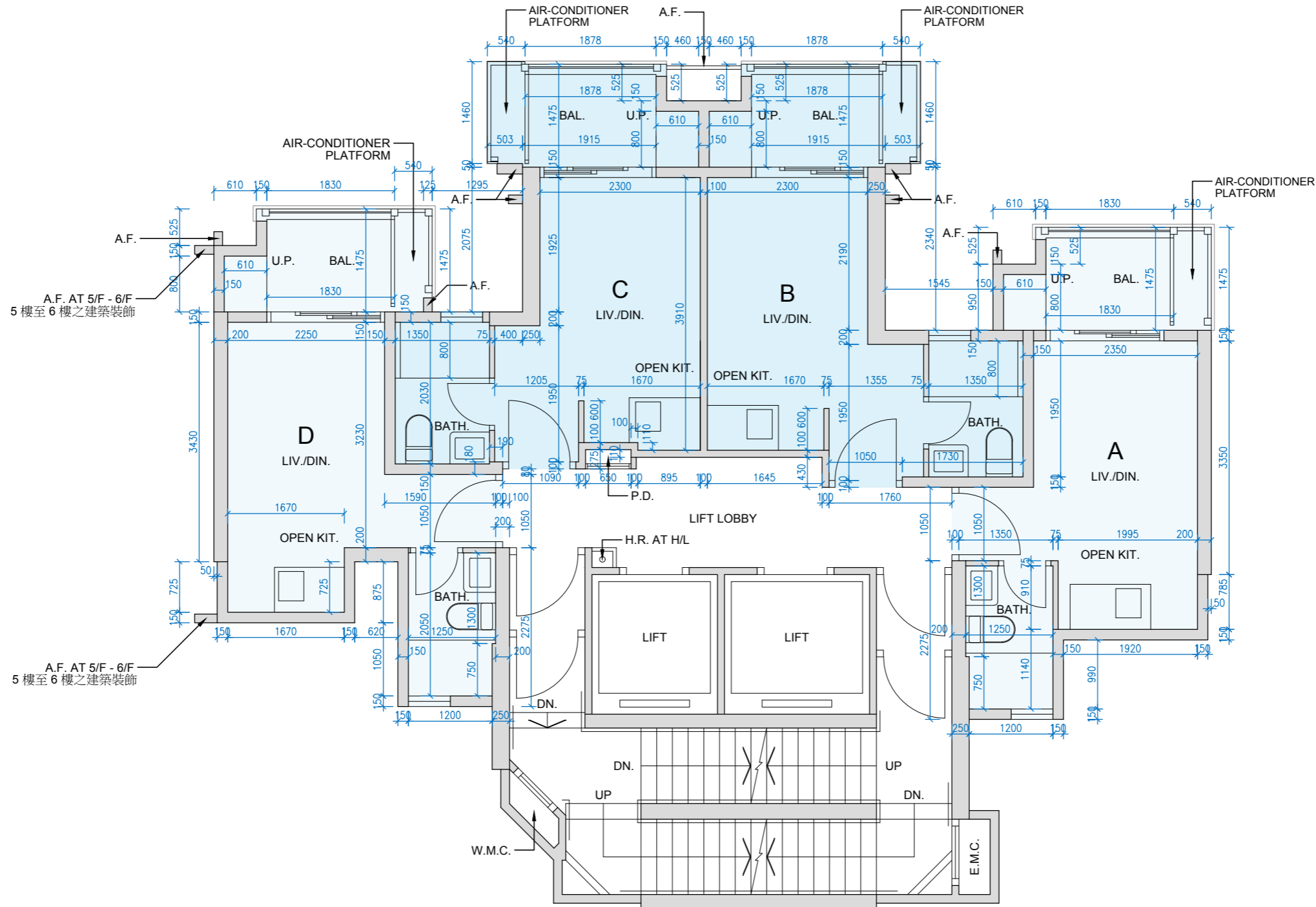
#### 備註：

- 樓面平面圖所列數字為以毫米標示之建築結構尺寸，並以四捨五入至整數。
- 樓面平面圖中顯示之名詞及簡稱之圖例，請參閱本售樓說明書第 23 頁。
- 層與層之間的高度（指該樓層之石屎地台面與上一層石屎地台面之高度距離）包括但不限於：
  - (◇) 當中在該樓層跌級樓板為 0.075 米的跌級高度；
  - (◎) 當中在該樓層跌級樓板為 0.250 米的跌級高度；
  - (⊕) 當中在該樓層跌級樓板為 0.280 米的跌級高度；
  - (☆) 當中在該樓層跌級樓板為 0.350 米的跌級高度；
  - (⇨) 當中在該樓層跌級樓板為 0.400 米的跌級高度；
 該等跌級樓板有部分位於該樓層或上一層之石屎地台面。

# Floor plans of residential properties in the development

## 發展項目的住宅物業的樓面平面圖

5/F - 10/F  
5樓至10樓



## Floor plans of residential properties in the development 發展項目的住宅物業的樓面平面圖

11/F  
11樓

Description 描述	Unit 單位		
	A	B	C
Floor-to-floor height (refers to the height between the top surface of the structural slab of a floor and the top surface of the structural slab of its immediate upper floor) of each residential property (m) 每個住宅物業的層與層之間的高度 (指該樓層之石屎地台面與上一層石屎地台面之高度距離) (米)	3.150 3.150 ◇ 3.150 ✧	3.150 3.150 ◇ 3.150 ◎ 3.150 ⊕ 3.150 ☆	3.150 3.150 ◇ 3.150 ✧
Thickness of the floor slabs (excluding plaster) of each residential property (mm) 每個住宅物業的樓板 (不包括灰泥) 厚度 (毫米)	150	150 175	150

The internal areas of the residential properties on the upper floors will generally be slightly larger than those on the lower floors because of the reducing thickness of the structural walls on the upper floors.  
(This statement does not apply to the residential properties in the Development because the design of the Development is such that the reducing thickness of the structural walls of residential properties on the upper floors does not increase the internal areas of those residential properties.)

因住宅物業的較高樓層的結構牆的厚度遞減，較高樓層的內部面積，一般比較低樓層的內部面積稍大。  
(不適用於發展項目內的住宅物業，因為發展項目的設計是較高樓層的住宅物業的結構牆的厚度遞減不會增加該等住宅物業的內部面積。)

Remarks:

- The dimensions in the floor plans are all structural dimensions in millimetre and rounded off to the nearest integer.
- Please refer to Page 23 of this sales brochure for legend of the terms and abbreviations shown in the floor plans.
- The floor-to-floor height (i.e. the height between the top surface of the structural slab of that floor and the top surface of the structured slab of its immediate upper floor) includes, without limitation:
  - (◇) Inclusive of the sunken depth of the sunken slab on the floor of that floor (0.075m);
  - (◎) Inclusive of the sunken depth of the sunken slab on the floor of that floor (0.250m);
  - (⊕) Inclusive of the sunken depth of the sunken slab on the floor of that floor (0.280m),
  - (☆) Inclusive of the sunken depth of the sunken slab on the floor of that floor (0.350m);
  - (✧) Inclusive of the sunken depth of the sunken slab on the floor of that floor (0.400m);
 those sunken slabs located partly on the structural slab of that floor or its immediate upper floor.

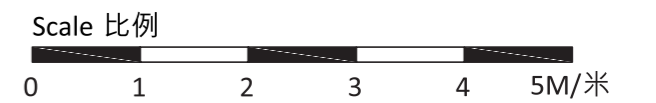
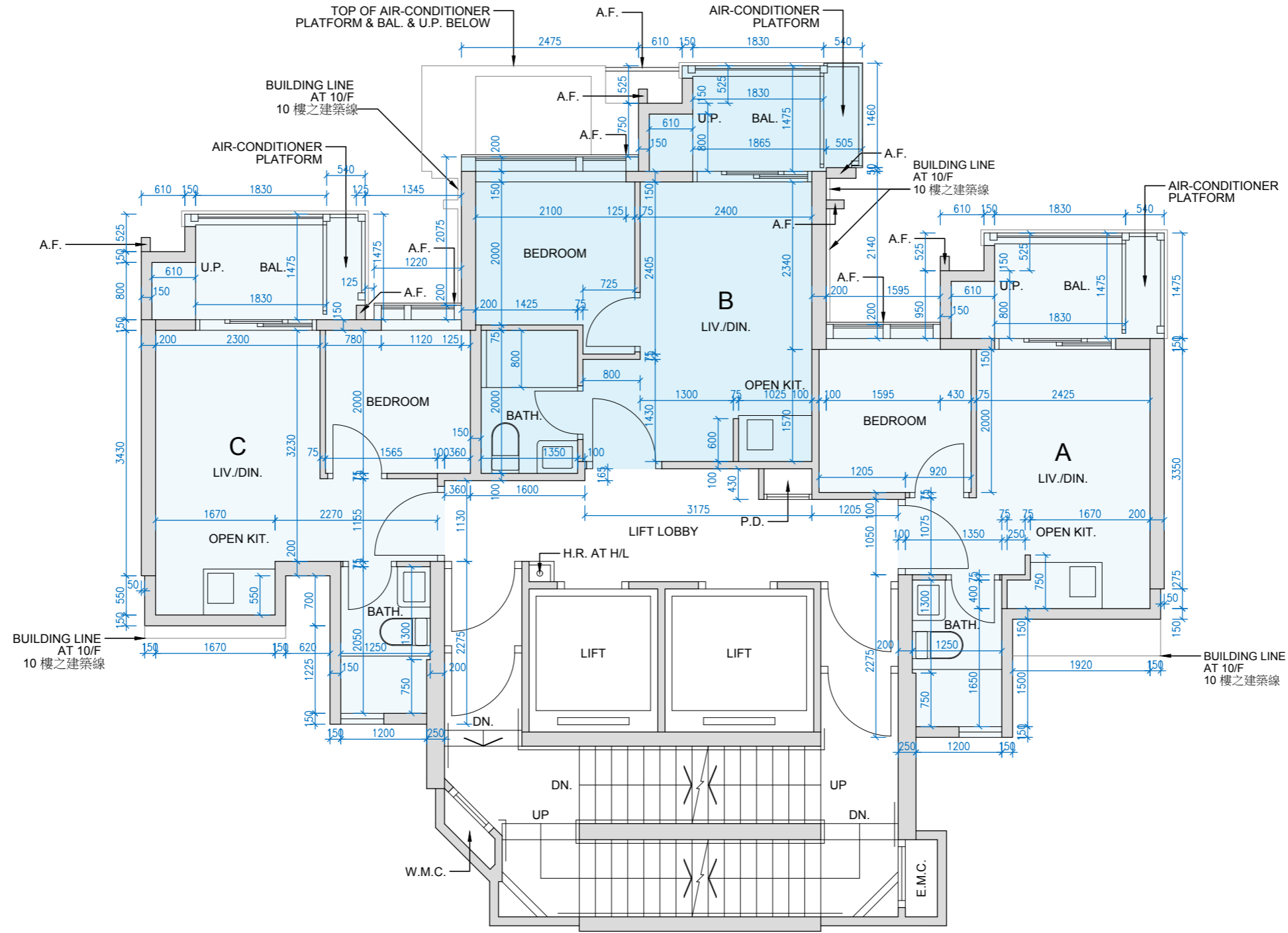
備註：

- 樓面平面圖所列數字為以毫米標示之建築結構尺寸，並以四捨五入至整數。
- 樓面平面圖中顯示之名詞及簡稱之圖例，請參閱本售樓說明書第 23 頁。
- 層與層之間的高度（指該樓層之石屎地台面與上一層石屎地台面之高度距離）包括但不限於：
  - (◇) 當中在該樓層跌級樓板為 0.075 米的跌級高度；
  - (◎) 當中在該樓層跌級樓板為 0.250 米的跌級高度；
  - (⊕) 當中在該樓層跌級樓板為 0.280 米的跌級高度；
  - (☆) 當中在該樓層跌級樓板為 0.350 米的跌級高度；
  - (✧) 當中在該樓層跌級樓板為 0.400 米的跌級高度；
 該等跌級樓板有部分位於該樓層或上一層之石屎地台面。

# Floor plans of residential properties in the development

## 發展項目的住宅物業的樓面平面圖

11/F  
11樓



## Floor plans of residential properties in the development 發展項目的住宅物業的樓面平面圖

12/F & 15/F - 23/F (13/F & 14/F are omitted)  
12樓及15樓至23樓 (不設13樓及14樓)

Description 描述	Unit 單位		
	A	B	C
Floor-to-floor height (refers to the height between the top surface of the structural slab of a floor and the top surface of the structural slab of its immediate upper floor) of each residential property (m) 每個住宅物業的層與層之間的高度 (指該樓層之石屎地台面與上一層石屎地台面之高度距離) (米)	3.150 3.150 ◇ 3.150 ✧	3.150 3.150 ◇ 3.150 ◎ 3.150 ⊕ 3.150 ☆	3.150 3.150 ◇ 3.150 ✧
Thickness of the floor slabs (excluding plaster) of each residential property (mm) 每個住宅物業的樓板 (不包括灰泥) 厚度 (毫米)	150	150 175	150

The internal areas of the residential properties on the upper floors will generally be slightly larger than those on the lower floors because of the reducing thickness of the structural walls on the upper floors. (This statement does not apply to the residential properties in the Development because the design of the Development is such that the reducing thickness of the structural walls of residential properties on the upper floors does not increase the internal areas of those residential properties.)

因住宅物業的較高樓層的結構牆的厚度遞減，較高樓層的內部面積，一般比較低樓層的內部面積稍大。(不適用於發展項目內的住宅物業，因為發展項目的設計是較高樓層的住宅物業的結構牆的厚度遞減不會增加該等住宅物業的內部面積。)

**Remarks:**

- The dimensions in the floor plans are all structural dimensions in millimetre and rounded off to the nearest integer.
- Please refer to Page 23 of this sales brochure for legend of the terms and abbreviations shown in the floor plans.
- The floor-to-floor height (i.e. the height between the top surface of the structural slab of that floor and the top surface of the structured slab of its immediate upper floor) includes, without limitation:
  - (◇) Inclusive of the sunken depth of the sunken slab on the floor of that floor (0.075m);
  - (◎) Inclusive of the sunken depth of the sunken slab on the floor of that floor (0.250m);
  - (⊕) Inclusive of the sunken depth of the sunken slab on the floor of that floor (0.280m);
  - (☆) Inclusive of the sunken depth of the sunken slab on the floor of that floor (0.350m);
  - (✧) Inclusive of the sunken depth of the sunken slab on the floor of that floor (0.400m);
 those sunken slabs located partly on the structural slab of that floor or its immediate upper floor.

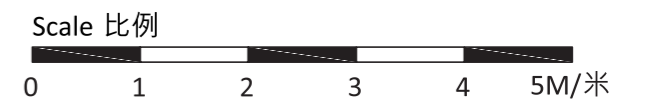
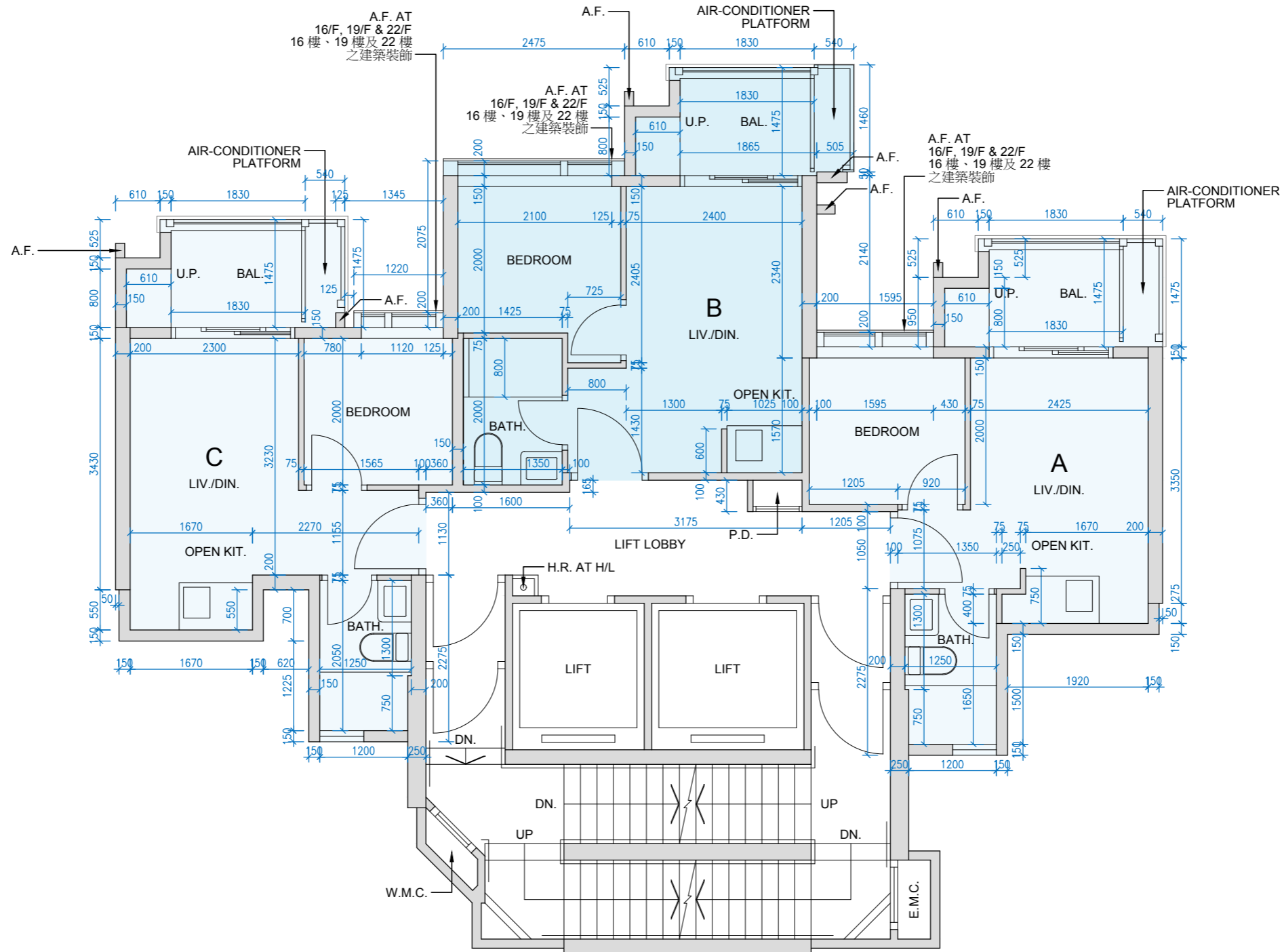
**備註：**

- 樓面平面圖所列數字為以毫米標示之建築結構尺寸，並以四捨五入至整數。
- 樓面平面圖中顯示之名詞及簡稱之圖例，請參閱本售樓說明書第 23 頁。
- 層與層之間的高度（指該樓層之石屎地台面與上一層石屎地台面之高度距離）包括但不限於：
  - (◇) 當中在該樓層跌級樓板為 0.075 米的跌級高度；
  - (◎) 當中在該樓層跌級樓板為 0.250 米的跌級高度；
  - (⊕) 當中在該樓層跌級樓板為 0.280 米的跌級高度；
  - (☆) 當中在該樓層跌級樓板為 0.350 米的跌級高度；
  - (✧) 當中在該樓層跌級樓板為 0.400 米的跌級高度；
 該等跌級樓板有部分位於該樓層或上一層之石屎地台面。

# Floor plans of residential properties in the development

## 發展項目的住宅物業的樓面平面圖

12/F & 15/F - 23/F (13/F & 14/F are omitted)  
 12樓及15樓至23樓 (不設13樓及14樓)



## Floor plans of residential properties in the development 發展項目的住宅物業的樓面平面圖

25/F  
25樓

Description 描述	Unit 單位		
	A	B	C
Floor-to-floor height (refers to the height between the top surface of the structural slab of a floor and the top surface of the structural slab of its immediate upper floor) of each residential property (m) 每個住宅物業的層與層之間的高度 (指該樓層之石屎地台面與上一層石屎地台面之高度距離) (米)	3.200 3.275 ◇ 3.600 ✧	3.200 3.275 ◇ 3.450 ◎ 3.480 ⊕ 3.550 ☆	3.200 3.275 ◇ 3.600 ✧
Thickness of the floor slabs (excluding plaster) of each residential property (mm) 每個住宅物業的樓板 (不包括灰泥) 厚度 (毫米)	200		

The internal areas of the residential properties on the upper floors will generally be slightly larger than those on the lower floors because of the reducing thickness of the structural walls on the upper floors. (This statement does not apply to the residential properties in the Development because the design of the Development is such that the reducing thickness of the structural walls of residential properties on the upper floors does not increase the internal areas of those residential properties.)

因住宅物業的較高樓層的結構牆的厚度遞減，較高樓層的內部面積，一般比較低樓層的內部面積稍大。(不適用於發展項目內的住宅物業，因為發展項目的設計是較高樓層的住宅物業的結構牆的厚度遞減不會增加該等住宅物業的內部面積。)

Remarks:

- The dimensions in the floor plans are all structural dimensions in millimetre and rounded off to the nearest integer.
- Please refer to Page 23 of this sales brochure for legend of the terms and abbreviations shown in the floor plans.
- The floor-to-floor height (i.e. the height between the top surface of the structural slab of that floor and the top surface of the structured slab of its immediate upper floor) includes, without limitation:
  - (◇) Inclusive of the sunken depth of the sunken slab on the floor of that floor (0.075m);
  - (◎) Inclusive of the sunken depth of the sunken slab on the floor of that floor (0.250m);
  - (⊕) Inclusive of the sunken depth of the sunken slab on the floor of that floor (0.280m),
  - (☆) Inclusive of the sunken depth of the sunken slab on the floor of that floor (0.350m);
  - (✧) Inclusive of the sunken depth of the sunken slab on the floor of that floor (0.400m);
 those sunken slabs located partly on the structural slab of that floor or its immediate upper floor.

備註：

- 樓面平面圖所列數字為以毫米標示之建築結構尺寸，並以四捨五入至整數。
- 樓面平面圖中顯示之名詞及簡稱之圖例，請參閱本售樓說明書第 23 頁。
- 層與層之間的高度（指該樓層之石屎地台面與上一層石屎地台面之高度距離）包括但不限於：
  - (◇) 當中在該樓層跌級樓板為 0.075 米的跌級高度；
  - (◎) 當中在該樓層跌級樓板為 0.250 米的跌級高度；
  - (⊕) 當中在該樓層跌級樓板為 0.280 米的跌級高度；
  - (☆) 當中在該樓層跌級樓板為 0.350 米的跌級高度；
  - (✧) 當中在該樓層跌級樓板為 0.400 米的跌級高度；
 該等跌級樓板有部分位於該樓層或上一層之石屎地台面。

# Floor plans of residential properties in the development

## 發展項目的住宅物業的樓面平面圖

25/F  
25樓

