


**Legend of terms and abbreviations used on the floor plans**

## 樓面平面圖中所使用名詞及簡稱之圖例

AC UNITS LOCATION FOR UNIT / UNITS	= Air-conditioner Outdoor Units Location for Unit / Units	= 空調機室外機位置供單位	FLAT ROOF (FOR AC UNITS)	= Flat Roof (for Air-conditioning Units)	= 平台(供空調機所用)
ARCH. FEATURE	= Architectural Features	= 建築裝飾	FLAT ROOF (FOR AC UNITS FOR COMMERCIAL ACCOMMODATION)	= Flat Roof (for Air-conditioning Units for Commercial Accommodation)	= 平台(供商用部分的空調機所用)
ARCH. FEATURE ABOVE	= Architectural Feature Above	= 上層建築裝飾	FLAT ROOF (FOR AC UNITS FOR COMMON AREA)	= Flat Roof (for Air-conditioning Units for Common Area)	= 平台(供公用地方的空調機所用)
A.D. FOR RSMRR	= Air Duct for Refuse Storage and Material Recovery Room	= 垃圾及物料回收房通風槽	FLAT ROOF (FOR PORTABLE WATERTANK AND PUMP)	= Flat Roof (for Portable Water Tank and Pump)	= 平台(供食水缸及水泵所用)
AC PLATFORM	= Air-conditioning Platform	= 空調機平台	HORIZONTAL ARCH. FEATURE	= Horizontal Architectural Feature	= 橫向建築裝飾
AT 17/F	= at 17/F	= 於17樓	HORIZONTAL SCREEN	= Horizontal Screen	= 橫向屏障
BATH 1	= Bathroom 1	= 浴室 1	HR	= Hose Reel	= 消防喉轆
BR 1	= Bedroom 1	= 睡房 1	INACCESSIBLE FLAT ROOF	= Inaccessible Flat Roof	= 無法到達的平台
BUILDING LINE ABOVE	= Building Line Above	= 上層建築物界線	LANDSCAPE FEATURE	= Landscape Feature	= 綠化建築裝飾
CHIMNEY FOR EMERGENCY GENERATOR	= Chimney for Emergency Generator	= 緊急發電機的煙囪	LIFT	= Lift	= 升降機
COMMON AREA FOR MAINTENANCE	= Common Area for Maintenance	= 供維修用的公用地方	LIFT LOBBY	= Lift Lobby	= 升降機大堂
COMMON CORRIDOR	= Common Corridor for Staircase Interchange	= 樓梯轉換之公共走廊	LIGHT WELL	= Light Well	= 光井
CURB	= Curb	= 邊緣	LIV / DIN	= Living Room / Dining Room	= 客廳/飯廳
	= Davit Arm Bracket	= 吊船吊臂支架	MBR	= Master Bedroom	= 主人睡房
DN	= Down	= 落	METAL HATCH DOOR	= Metal Hatch Door	= 金屬艙口門
DOG HOUSE	= Dog House	= 檢修井	METER ROOM A	= Meter Room A	= 電錶房 A
ELV	= Extra Low Voltage Room	= 特低壓電力房	METER ROOM B	= Meter Room B	= 電錶房 B
EXT. P.D.	= Extended Pipe Duct	= 延長管道槽	O KIT	= Open Kitchen	= 開放式廚房
FIREMAN'S LIFT LOBBY	= Fireman's Lift Lobby	= 消防員升降機大堂	PERFORATED METAL SCREEN	= Perforated Metal Screen	= 金屬穿孔屏障
			PLANTER	= Planter	= 花槽

**Legend of terms and abbreviations used on the floor plans**

## 樓面平面圖中所使用名詞及簡稱之圖例

PNEUMATIC TANK	= Pneumatic Tank	= 加壓缸	TOP OF CURTAIN WALL	= Top of Curtain Wall	= 玻璃幕牆頂部
POTABLE WATER TANK	= Potable Water Tank	= 食水缸	TOP VENT FOR STAIRCASE	= Top Vent for Staircase	= 樓梯的最高通風孔
PRIVATE FLAT ROOF	= Private Flat Roof	= 私人平台	TRS	= Temporary Refuge Space	= 臨時庇護處
PRIVATE ROOF	= Private Roof	= 私人天台	UNIT / UNITS	= Unit / Units	= 單位
PROTECTED LOBBY	= Protected Lobby	= 防護門廊	UP	= Up	= 上
P.D.	= Pipe Duct	= 管道槽	VERTICAL GREEN	= Vertical Green	= 垂直綠化
RSMRR	= Refuse Storage and Material Recovery Room	= 垃圾及物料回收房	WATER PUMP	= Water Pump	= 水泵
STORE RM	= Store Room	= 儲物室	W.M.C.	= Water Meter Cabinet	= 水錶櫃

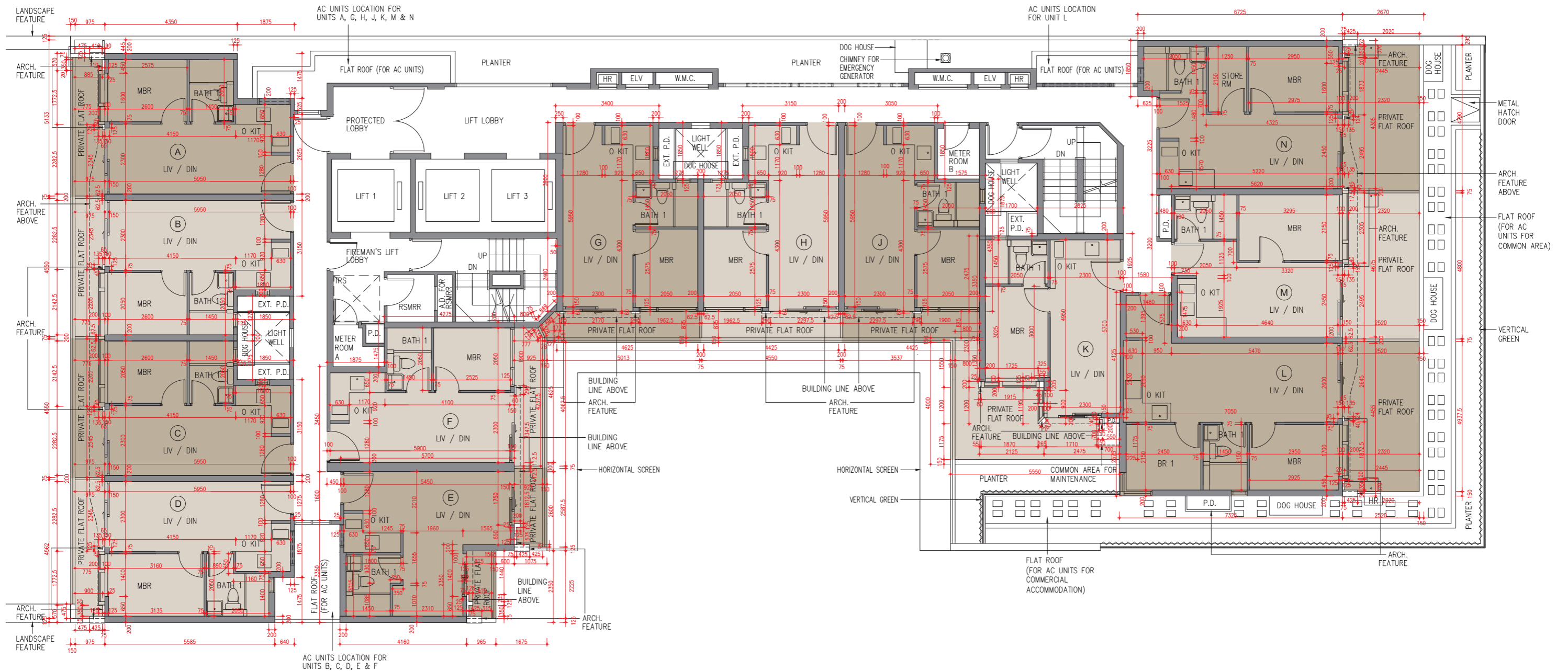
## Notes :

- Common pipes exposed or enclosed in cladding may be located at the private flat roof and/or private roof and/or external wall of some residential properties.
- There may be sunken slabs at some parts of the ceiling inside some residential properties for the installation of mechanical and electrical services of the floor above or due to the structural, architectural and/or decoration design requirements of the floor above.
- There may be ceiling bulkheads or false ceiling inside some residential properties for the installation of air-conditioning conduits and/or other mechanical and electrical services.
- The dimensions of the floor plans are all structural dimensions in millimeter.
- Those icons of fittings and appliances shown on the floor plans of residential properties like bathtubs, wash basins, water closets, shower cubicles, sink units, cabinets (if any) etc. are prepared in accordance with the latest approved building plans. Their shapes, dimensions, scales may be differed from the fittings and appliances actually provided and they are for indication and reference only.
- 4/F, 13/F and 14/F are omitted.
- The floor plans are floor plans of the residential properties in the Development. Please refer to the Deed of Mutual Covenant for the demarcation and location of common parts and other units in the Development.

## 備註：

- 部份住宅物業的私人平台及/或私人天台及/或外牆或設有外露之公用喉管或內藏於裝飾板內之公用喉管。
- 部份住宅物業內之部分天花或有跌級樓板，用以安裝上層之機電設備或配合上層之結構、建築設計及/或裝修設計上的需要。
- 部份住宅物業內或設有假陣或假天花用以安裝冷氣喉管及/或其他機電設備。
- 樓面平面圖所列之數字為以毫米標示之建築結構尺寸。
- 各住宅物業的樓面平面圖內所展示之裝置及設備的圖標如浴缸、洗面盆、座廁、淋浴間、洗滌盆、櫃(如有)等乃根據最新經批准的建築圖則擬備，其形狀、尺寸、比例或與實際提供的裝置及設備存在差異，僅供示意及參考之用。
- 不設4樓、13樓及14樓。
- 樓面平面圖為發展項目中的住宅物業的樓面平面圖。發展項目公用部分和其他單位的邊界和位置，請參閱公契。

2/F Floor Plan  
2樓樓面平面圖



Scale: 0M/米 5M/米  
比例:

2/F Floor Plan  
2樓 樓面平面圖

Description 描述	Floor 樓層	Unit 單位													
		A	B	C	D	E	F	G	H	J	K	L	M	N	
The floor-to-floor height of each residential property (mm) 每個住宅物業的層與層之間的高度 (毫米)	2/F 2樓	2650, 3000	2650, 3000	2650, 3000	2650, 3000	2650, 3000	2650, 3000	2650, 3000	2650, 3000	2650, 3000	2650, 2675, 3000	2650, 2800, 3000	2650, 3000	2650, 3000	2650, 3000
The thickness of the floor slabs (excluding plaster) of each residential property (mm) 每個住宅物業的樓板 (不包括灰泥) 的厚度 (毫米)		175	175	175	175	175	175	175	175	175	175	175	175	175	175

The internal areas of the residential properties on the upper floors will generally be slightly larger than those on the lower floors because of the reducing thickness of the structural walls on the upper floors. (Not applicable to the Development)

## Notes:

1. The dimensions in the floor plans are all structural dimensions in millimetre and rounded off to the nearest integer.
2. Please refer to the first page of the section "Floor plans of residential properties in the Development" for legend of the terms and abbreviations used in the floor plan.

因住宅物業的較高樓層的結構牆的厚度遞減，較高樓層的內部面積，一般比較低樓層的內部面積稍大。(不適用於本發展項目)

## 備註：

1. 樓面平面圖之尺規所列數字為以毫米標示之建築結構尺寸，並以四捨五入至整數。
2. 平面圖中所使用之名詞及簡稱請參閱「發展項目的住宅物業的樓面平面圖」一節的首頁。



## 3/F, 5/F-12/F Floor Plan

## 3樓、5樓至12樓 樓面平面圖

Description 描述	Floor 樓層	Unit 單位													
		A	B	C	D	E	F	G	H	J	K	L	M	N	
The floor-to-floor height of each residential property (mm) 每個住宅物業的層與層之間的高度 (毫米)	3/F, 5/F-11/F 3樓、5樓至11樓	2650, 3000	2650, 3000	2650, 3000	2650, 3000	2650, 3000	2650, 3000	2650, 3000	2650, 3000	2650, 3000	2650, 2675, 3000	2650, 2800, 3000	2650, 3000	2650, 3000	2650, 3000
The thickness of the floor slabs (excluding plaster) of each residential property (mm) 每個住宅物業的樓板 (不包括灰泥) 的厚度 (毫米)		175	175	175	175	175	175	175	175	175	175	175	175	175	175
The floor-to-floor height of each residential property (mm) 每個住宅物業的層與層之間的高度 (毫米)	12/F 12樓	2650, 3000	2650, 3000	2650, 3000	2650, 3000	3000	2650, 2700, 3000	2650, 3000	2650, 3000	2650, 3000	2650, 2675, 3000	2650, 2800, 3000	2650, 3000	2650, 3000	2650, 3000
The thickness of the floor slabs (excluding plaster) of each residential property (mm) 每個住宅物業的樓板 (不包括灰泥) 的厚度 (毫米)		175	175	175	175	175	175	175	175	175	175	175	175	175	175

The internal areas of the residential properties on the upper floors will generally be slightly larger than those on the lower floors because of the reducing thickness of the structural walls on the upper floors. (Not applicable to the Development)

## Notes:

- The dimensions in the floor plans are all structural dimensions in millimetre and rounded off to the nearest integer.
- Please refer to the first page of the section "Floor plans of residential properties in the Development" for legend of the terms and abbreviations used in the floor plan.

因住宅物業的較高樓層的結構牆的厚度遞減，較高樓層的內部面積，一般比較低樓層的內部面積稍大。(不適用於本發展項目)

## 備註：

- 樓面平面圖之尺規所列數字為以毫米標示之建築結構尺寸，並以四捨五入至整數。
- 平面圖中所使用之名詞及簡稱請參閱「發展項目的住宅物業的樓面平面圖」一節的首頁。



15/F Floor Plan  
15樓 樓面平面圖

Description 描述	Floor 樓層	Unit 單位											
		A	B	C	D	E	G	H	J	K	L	M	N
The floor-to-floor height of each residential property (mm) 每個住宅物業的層與層之間的高度 (毫米)	15/F 15樓	2650, 3000	2650, 3000	2650, 3000	2650, 3000	2650, 2700, 3000	2650, 3000	2650, 3000	2650, 2675, 3000	3000	2650, 3000	2650, 3000	2650, 3000
The thickness of the floor slabs (excluding plaster) of each residential property (mm) 每個住宅物業的樓板 (不包括灰泥) 的厚度 (毫米)		175	175	175	175	175	175	175	175	175	175	175	175

The internal areas of the residential properties on the upper floors will generally be slightly larger than those on the lower floors because of the reducing thickness of the structural walls on the upper floors. (Not applicable to the Development)

## Notes:

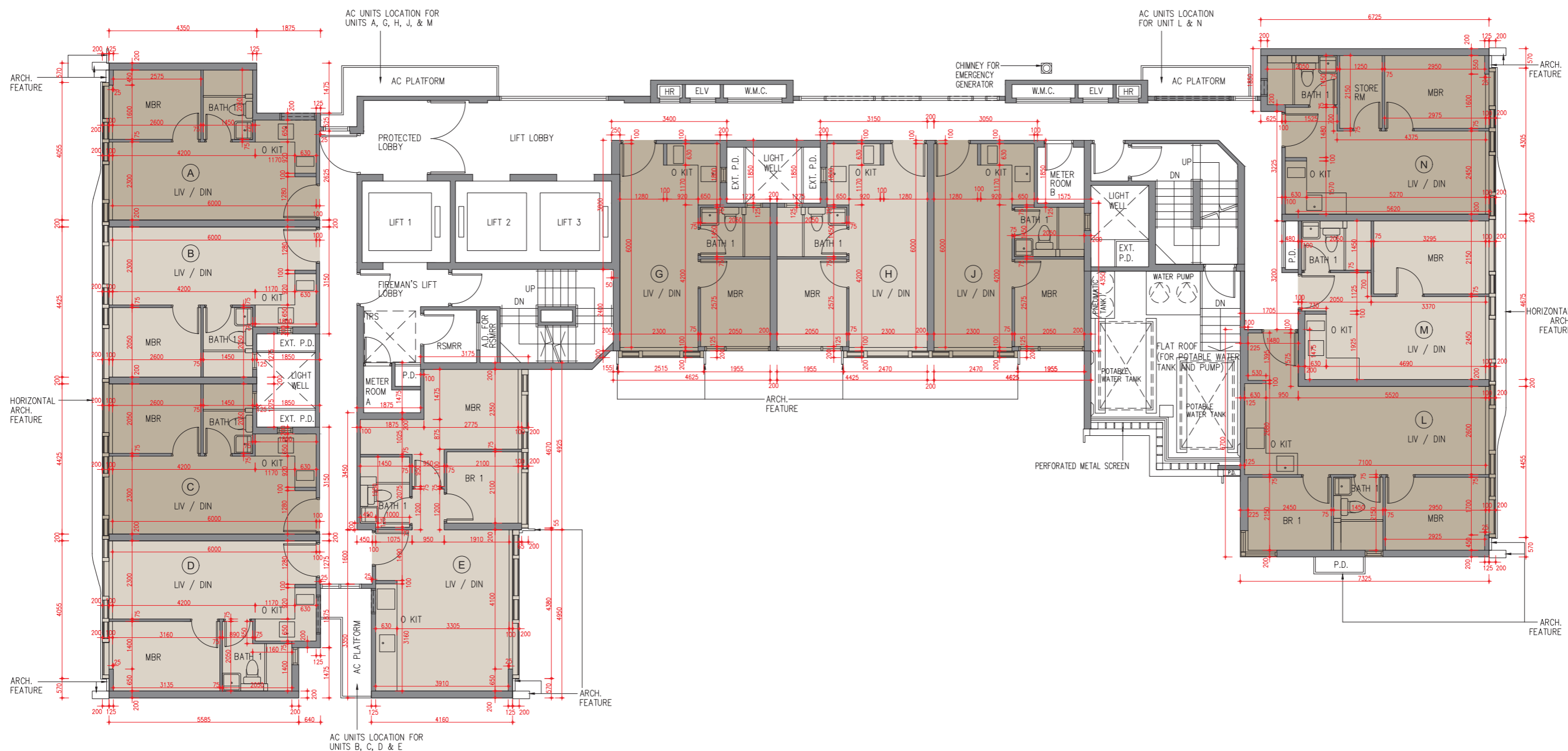
1. The dimensions in the floor plans are all structural dimensions in millimetre and rounded off to the nearest integer.
2. Please refer to the first page of the section "Floor plans of residential properties in the Development" for legend of the terms and abbreviations used in the floor plan.

因住宅物業的較高樓層的結構牆的厚度遞減，較高樓層的內部面積，一般比較低樓層的內部面積稍大。(不適用於本發展項目)

## 備註：

1. 樓面平面圖之尺規所列數字為以毫米標示之建築結構尺寸，並以四捨五入至整數。
2. 平面圖中所使用之名詞及簡稱請參閱「發展項目的住宅物業的樓面平面圖」一節的首頁。

16/F Floor Plan  
16樓 樓面平面圖



Scale: 0M/米  
比例:

5M/米

16/F Floor Plan  
16樓 樓面平面圖

Description 描述	Floor 樓層	Unit 單位										
		A	B	C	D	E	G	H	J	L	M	N
The floor-to-floor height of each residential property (mm) 每個住宅物業的層與層之間的高度 (毫米)	16/F 16樓	2650, 3000	2650, 3000	2650, 3000	2650, 3000	2650, 2700, 3000	2650, 3000	2650, 3000	2650, 2675, 3000	2650, 3000	2650, 3000	2650, 3000
The thickness of the floor slabs (excluding plaster) of each residential property (mm) 每個住宅物業的樓板 (不包括灰泥) 的厚度 (毫米)		175	175	175	175	175	175	175	175	175	175	175

The internal areas of the residential properties on the upper floors will generally be slightly larger than those on the lower floors because of the reducing thickness of the structural walls on the upper floors. (Not applicable to the Development)

## Notes:

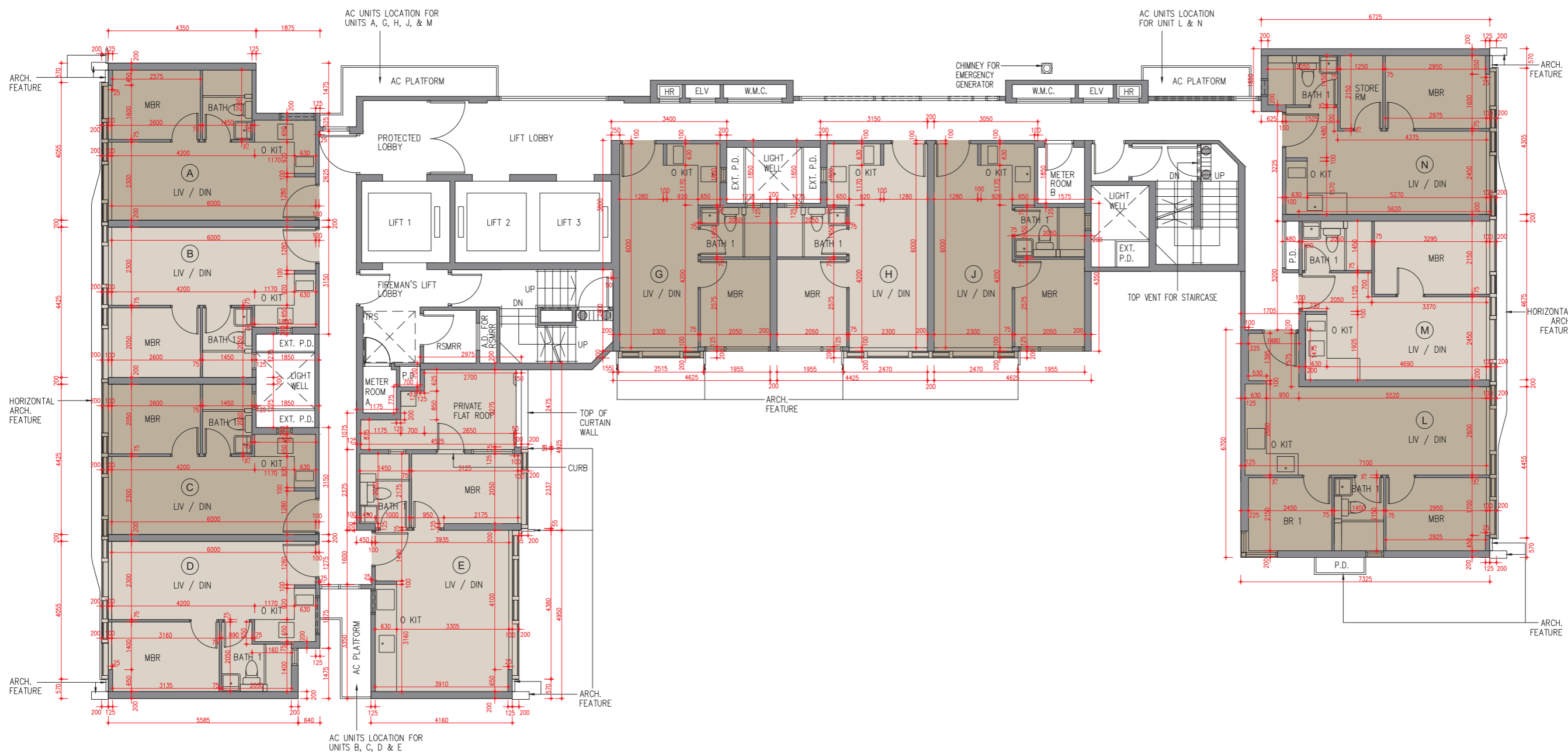
1. The dimensions in the floor plans are all structural dimensions in millimetre and rounded off to the nearest integer.
2. Please refer to the first page of the section "Floor plans of residential properties in the Development" for legend of the terms and abbreviations used in the floor plan.

因住宅物業的較高樓層的結構牆的厚度遞減，較高樓層的內部面積，一般比較低樓層的內部面積稍大。(不適用於本發展項目)

## 備註：

1. 樓面平面圖之尺規所列數字為以毫米標示之建築結構尺寸，並以四捨五入至整數。
2. 平面圖中所使用之名詞及簡稱請參閱「發展項目的住宅物業的樓面平面圖」一節的首頁。

17/F Floor Plan  
17樓 樓面平面圖



Scale: 0M/米 5M/米  
比例:

17/F Floor Plan  
17樓 樓面平面圖

Description 描述	Floor 樓層	Unit 單位											
		A	B	C	D	E	G	H	J	L	M	N	
The floor-to-floor height of each residential property (mm) 每個住宅物業的層與層之間的高度 (毫米)	17/F 17樓	3500	3500	3500	3500	3500	3500	3500	3500	3500	3500	3500	3500
The thickness of the floor slabs (excluding plaster) of each residential property (mm) 每個住宅物業的樓板 (不包括灰泥) 的厚度 (毫米)		175	175	175	175	175	175	175	175	175	175	175	175

The internal areas of the residential properties on the upper floors will generally be slightly larger than those on the lower floors because of the reducing thickness of the structural walls on the upper floors. (Not applicable to the Development)

## Notes:

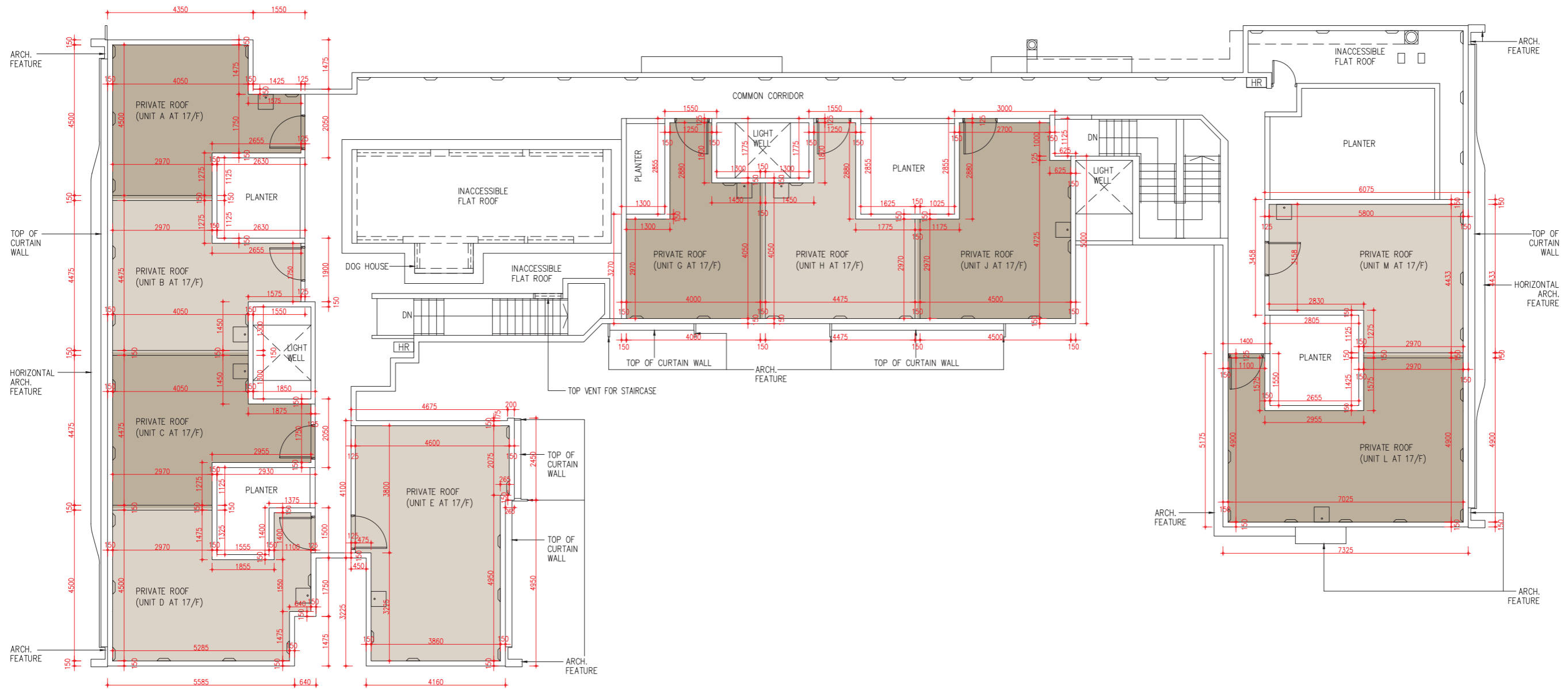
1. The dimensions in the floor plans are all structural dimensions in millimetre and rounded off to the nearest integer.
2. Please refer to the first page of the section "Floor plans of residential properties in the Development" for legend of the terms and abbreviations used in the floor plan.

因住宅物業的較高樓層的結構牆的厚度遞減，較高樓層的內部面積，一般比較低樓層的內部面積稍大。(不適用於本發展項目)

## 備註：

1. 樓面平面圖之尺規所列數字為以毫米標示之建築結構尺寸，並以四捨五入至整數。
2. 平面圖中所使用之名詞及簡稱請參閱「發展項目的住宅物業的樓面平面圖」一節的首頁。

Roof Floor Plan  
天台 樓面平面圖



Scale: 0M/米  
比例:

5M/米



Roof Floor Plan  
天台 樓面平面圖

Description 描述	Floor 樓層	Unit 單位									
		A	B	C	D	E	G	H	J	L	M
The floor-to-floor height of each residential property (mm) 每個住宅物業的層與層之間的高度 (毫米)	Roof 天台	Not applicable 不適用									
The thickness of the floor slabs (excluding plaster) of each residential property (mm) 每個住宅物業的樓板 (不包括灰泥) 的厚度 (毫米)		Not applicable 不適用									

The internal areas of the residential properties on the upper floors will generally be slightly larger than those on the lower floors because of the reducing thickness of the structural walls on the upper floors. (Not applicable to the Development)

## Notes:

1. The dimensions in the floor plans are all structural dimensions in millimetre and rounded off to the nearest integer.
2. Please refer to the first page of the section "Floor plans of residential properties in the Development" for legend of the terms and abbreviations used in the floor plan.

因住宅物業的較高樓層的結構牆的厚度遞減，較高樓層的內部面積，一般比較低樓層的內部面積稍大。(不適用於本發展項目)

## 備註：

1. 樓面平面圖之尺規所列數字為以毫米標示之建築結構尺寸，並以四捨五入至整數。
2. 平面圖中所使用之名詞及簡稱請參閱「發展項目的住宅物業的樓面平面圖」一節的首頁。