

# Floor plans of residential properties in the development

## 發展項目的住宅物業的樓面平面圖

### Legend of terms and abbreviations used on Floor Plan

#### 樓面平面圖中所使用名詞及簡稱之圖例

A.F. / ARCH. FEATURE	= Architectural Feature	= 建築裝飾
A/C Platform	= Air Conditioning Platform	= 空調機平台
AREA DESIGNATED AS COMMON AREA IN DMC PLAN (FOR MAINTENANCE)	= Area Designated As Common Area in DMC Plan (For Maintenance)	= 於大廈公契圖則內的特定部分公用地方 (供維修之用)
B.R. 1 / Bed Rm.1	= Bedroom 1	= 睡房1
B.R. 2 / Bed Rm.2	= Bedroom 2	= 睡房2
B.R. 3 / Bed Rm.3	= Bedroom 3	= 睡房3
BAL.	= Balcony	= 露台
BATH 1	= Bathroom 1	= 浴室1
BATH 2	= Bathroom 2	= 浴室2
C.W.	= Curtain Wall	= 幕牆
CLOSET	= Closet	= 衣帽間
COVER FOR BAL.	= Cover for Balcony	= 露台上蓋
COVER FOR UP	= Cover for Utility Platform	= 工作平台上蓋
DINING	= Dining Room	= 飯廳
E.M.C.	= Electrical Meter Cabinet	= 電錶櫃
FAMILY ROOM	= Family Room	= 家庭房
H.R.	= Hose Reel	= 消防喉轆
KIT.	= Kitchen	= 廚房
LIFT	= Lift	= 升降機
LIFT LOBBY	= Lift Lobby	= 升降機大堂
LIFT SHAFT	= Lift Shaft	= 升降機井
LIVING	= Living Room	= 客廳
M.B.R / Master Bed Rm.	= Master Bedroom	= 主人睡房
MAID	= Maid Room	= 工人房
MAID BATH	= Maid Bathroom	= 工人浴室
MASTER BATH	= Master Bathroom	= 主人浴室
P.D.	= Pipe Duct	= 管道槽
POTABLE WATER PUMP & TANK ROOM	= Potable Water Pump and Tank Room	= 食水泵和水箱室
POWDER ROOM	= Powder Room	= 化妝間
PRIVATE FLAT ROOF	= Private Flat Roof	= 私人平台
R.S.M.R.RM.	= Refuse Storage and Material Recovery Room	= 垃圾儲存及物料回收室
STORE	= Store Room	= 儲物房
T.R.S	= Temporary Refuge Space	= 臨時庇護處
UP/DN	= Up/Down	= 上/下
UP	= Utility Platform	= 工作平台
UP COVER	= Cover for Utility Platform	= 工作平台上蓋
UP COVER (26/F only)	= Cover for Utility Platform (26/F only)	= 工作平台上蓋 (只供26樓)
W.M.C.	= Water Meter Counter	= 水錶箱

## Floor plans of residential properties in the development 發展項目的住宅物業的樓面平面圖

Remarks applicable to the floor plans in this section:

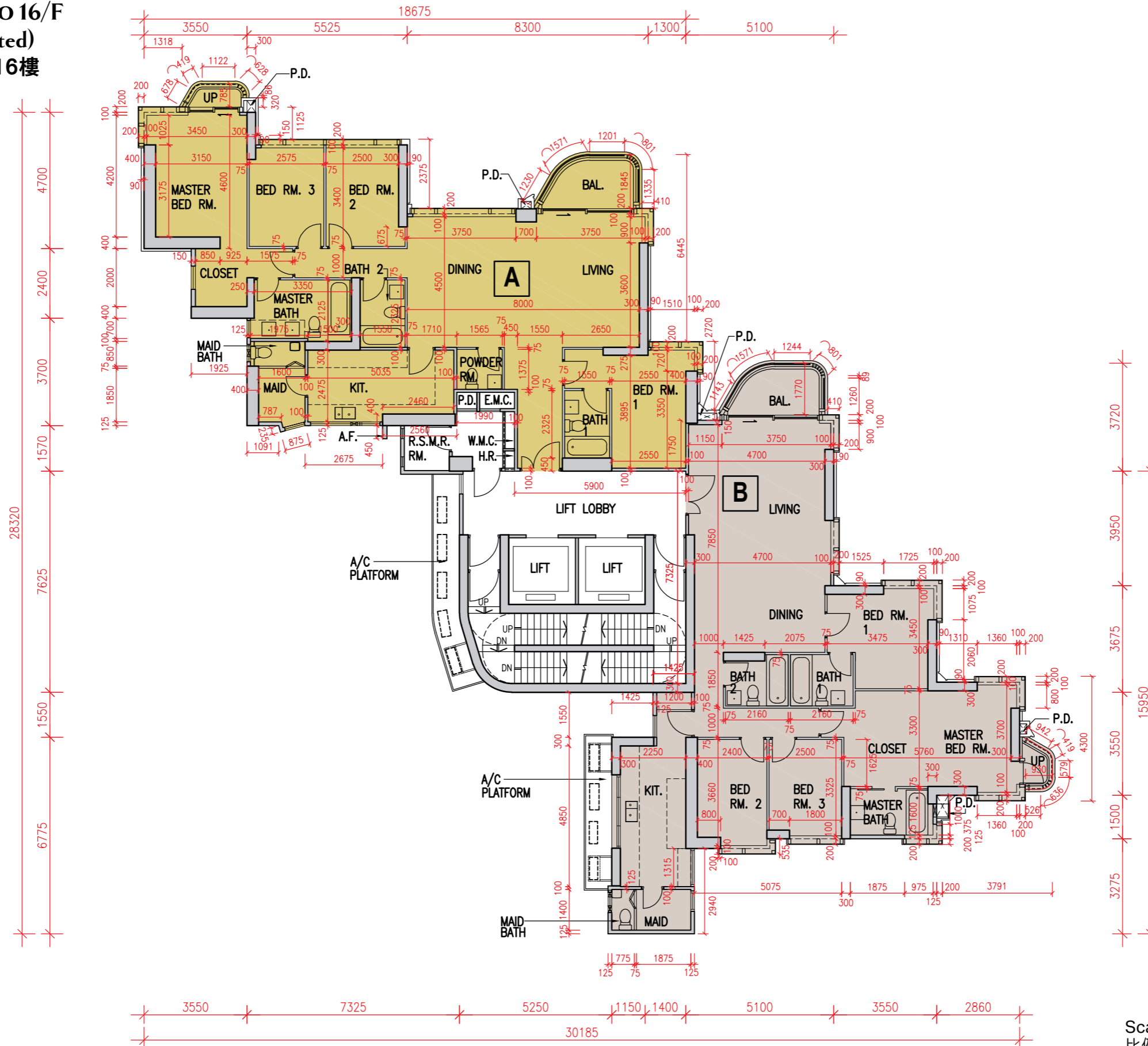
1. There are architectural features, metal grilles and/or exposed pipes on the external walls of some of the floors. For details, please refer to the latest approved building plans and/or approved drainage plans and/or other relevant plans.
2. Common pipes exposed and/or enclosed in cladding are located at/adjacent to the balcony and/or flat roof and/or air-conditioner platform and/or external wall of some residential properties. For details, please refer to the latest approved building plans and/or approved drainage plans and/or other relevant plans.
3. There are sunken slabs for mechanical and electrical services and/or false ceiling/bulkheads for the air-conditioning fittings and/or mechanical and electrical services at some residential properties.
4. There are exposed pipes installed in some toilets/lavatories.
5. There are exposed pipes located at the upper part of some utility platforms.
6. Balconies, Utility Platforms and Verandahs are non-enclosed areas.
7. Symbols of fittings and fitments such as bath tub, sink, water closet, shower, sink counter, etc. in the floor plans are prepared based on the latest approved building plans and are for general indication only.

適用於本節之樓面平面圖之備注：

1. 部分樓層外牆範圍設有建築裝飾、金屬格柵及/或外露喉管，詳細資料請參考最新經批准的建築圖則及/或經批准的排水設施圖則及/或其他相關圖則。
2. 部分住宅物業的露台及/或平台及/或空調機平台及/或外牆上/附近設有外露公用喉管及/或外牆裝飾板(覆蓋板)內藏之公用喉管，詳細資料請參考最新經批准的建築圖則及/或經批准的排水設施圖則及/或其他相關圖則。
3. 部分住宅物業有用以安裝機電設備的跌級樓板及/或用以裝置空調裝備及/或其他機電設備的假天花/裝飾橫樑。
4. 部分洗手間內裝有外露喉管。
5. 部分工作平台上方裝有外露喉管。
6. 露台、工作平台及陽台為不可封閉的地方。
7. 樓面平面圖上所顯示的形象裝置符號，如浴缸、洗滌盆、坐廁、花灑、洗滌盆櫃等乃按最新的經批准的建築圖則繪製，只作一般示意用途。

# Floor plans of residential properties in the development 發展項目的住宅物業的樓面平面圖

5/F to 12/F & 15/F to 16/F  
(13/F & 14/F are omitted)  
5樓至12樓及15樓至16樓  
(不設13樓及14樓)



## Floor plans of residential properties in the development 發展項目的住宅物業的樓面平面圖

### 5/F to 12/F & 15/F to 16/F (13/F & 14/F are omitted) 5樓至12樓及15樓至16樓 (不設13樓及14樓)

Description 描述	Floor 樓層	Unit 單位	
		A	B
Floor-to-floor height (refers to the height between the top surface of the structural slab of a floor and the top surface of the structural slab of its immediate upper floor) of each residential property (m) 每個住宅物業的層與層之間的高度 (指該樓層之石屎地台面與上一層石屎地台面之高度距離) (米)	5/F 5樓	3,500	
Thickness of the floor slabs (excluding plaster) of each residential property (mm) 每個住宅物業的樓板 (不包括灰泥) 厚度 (毫米)		150, 225, 300	150, 300
Floor-to-floor height (refers to the height between the top surface of the structural slab of a floor and the top surface of the structural slab of its immediate upper floor) of each residential property (m) 每個住宅物業的層與層之間的高度 (指該樓層之石屎地台面與上一層石屎地台面之高度距離) (米)	6/F-12/F & 15/F-15/F 6樓至12樓及 15樓至15樓	3,500	
Thickness of the floor slabs (excluding plaster) of each residential property (mm) 每個住宅物業的樓板 (不包括灰泥) 厚度 (毫米)		150, 225, 300	150, 300
Floor-to-floor height (refers to the height between the top surface of the structural slab of a floor and the top surface of the structural slab of its immediate upper floor) of each residential property (m) 每個住宅物業的層與層之間的高度 (指該樓層之石屎地台面與上一層石屎地台面之高度距離) (米)	16/F 16樓	3,500	3,325 3,500
Thickness of the floor slabs (excluding plaster) of each residential property (mm) 每個住宅物業的樓板 (不包括灰泥) 厚度 (毫米)		150, 225, 300	150, 300

The internal areas of the residential properties on the upper floors will generally be slightly larger than those on the lower floors because of the reducing thickness of the structural walls on the upper floors (Note: This statement as required under section 10(2)(e) of Part 1 of Schedule 1 to the Residential Properties (First-hand Sales) Ordinance is not applicable to the Development).

因住宅物業的較高樓層的結構牆的厚度遞減，較高樓層的內部面積，一般比較低樓層的內部面積稍大(備註：此《一手住宅物業銷售條例》附表1第1部第10(2)(e)條規定之陳述並不適用於發展項目)。

Remarks :

- The dimensions in the floor plans are all structural dimensions in millimetre and rounded off to the nearest integer.
- Please refer to Page 22 of this sales brochure for legend of the terms and abbreviations shown in the floor plan.

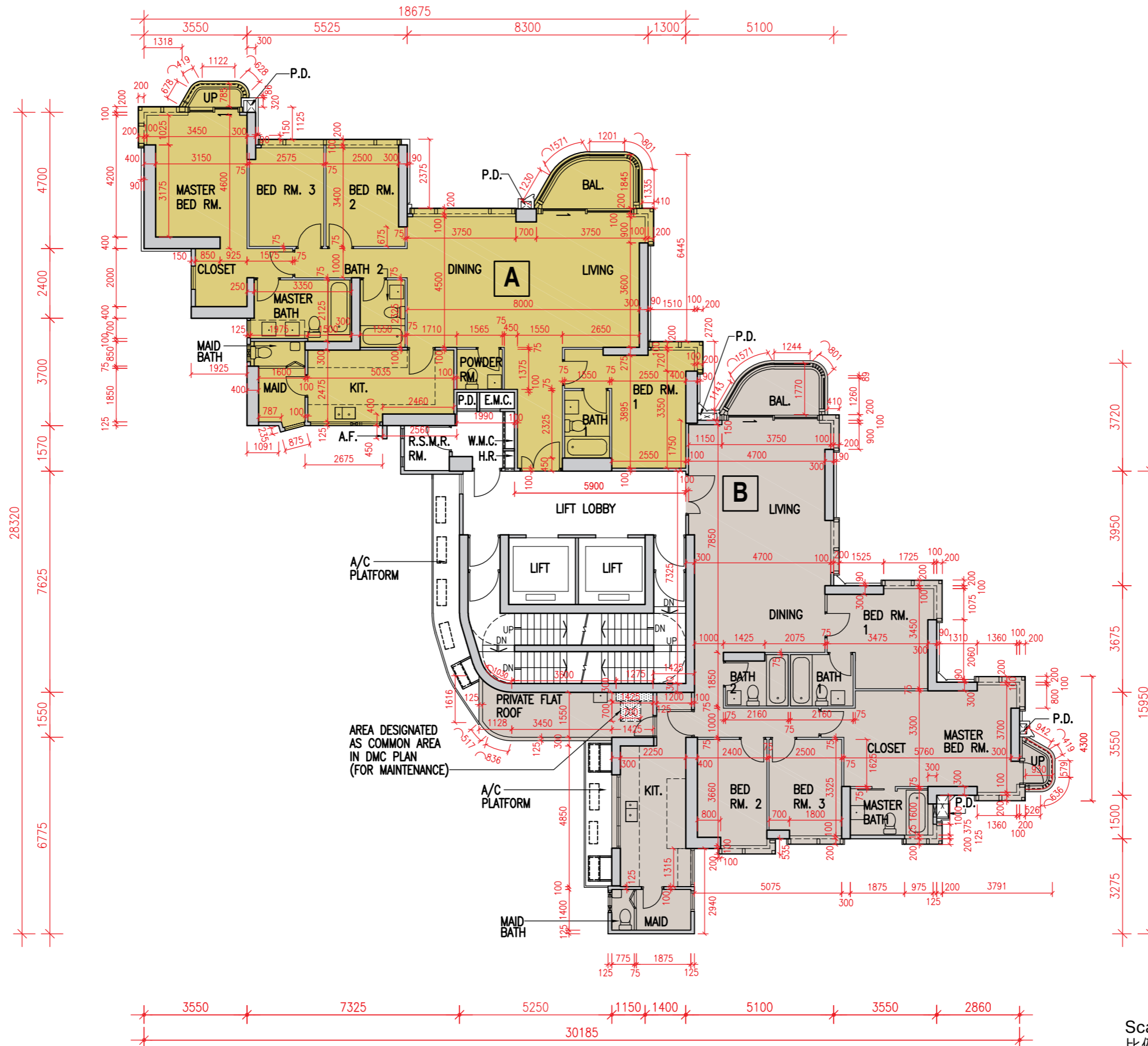
備註：

- 樓面平面圖之尺規所列數字為以毫米標示之建築結構尺寸，並以四捨五入至整數。
- 平面圖中顯示之名詞及簡稱之圖例請參閱本售樓說明書第22頁。

# Floor plans of residential properties in the development

## 發展項目的住宅物業的樓面平面圖

18/F  
18樓



Scale: 0M/米 5M/米  
比例

## Floor plans of residential properties in the development 發展項目的住宅物業的樓面平面圖

**18/F**  
**18樓**

Description 描述	Floor 樓層	Unit 單位	
		A	B
Floor-to-floor height (refers to the height between the top surface of the structural slab of a floor and the top surface of the structural slab of its immediate upper floor) of each residential property (m) 每個住宅物業的層與層之間的高度 (指該樓層之石屎地台面與上一層石屎地台面之高度距離) (米)	18/F 18樓	3,500	
Thickness of the floor slabs (excluding plaster) of each residential property (mm) 每個住宅物業的樓板 (不包括灰泥) 厚度 (毫米)		150, 225, 300	150, 300

The internal areas of the residential properties on the upper floors will generally be slightly larger than those on the lower floors because of the reducing thickness of the structural walls on the upper floors (Note: This statement as required under section 10(2)(e) of Part 1 of Schedule 1 to the Residential Properties (First-hand Sales) Ordinance is not applicable to the Development).

因住宅物業的較高樓層的結構牆的厚度遞減，較高樓層的內部面積，一般比較低樓層的內部面積稍大(備註：此《一手住宅物業銷售條例》附表1第1部第10(2)(e)條規定之陳述並不適用於發展項目)。

Remarks :

1. The dimensions in the floor plans are all structural dimensions in millimetre and rounded off to the nearest integer.
2. Please refer to Page 22 of this sales brochure for legend of the terms and abbreviations shown in the floor plan.

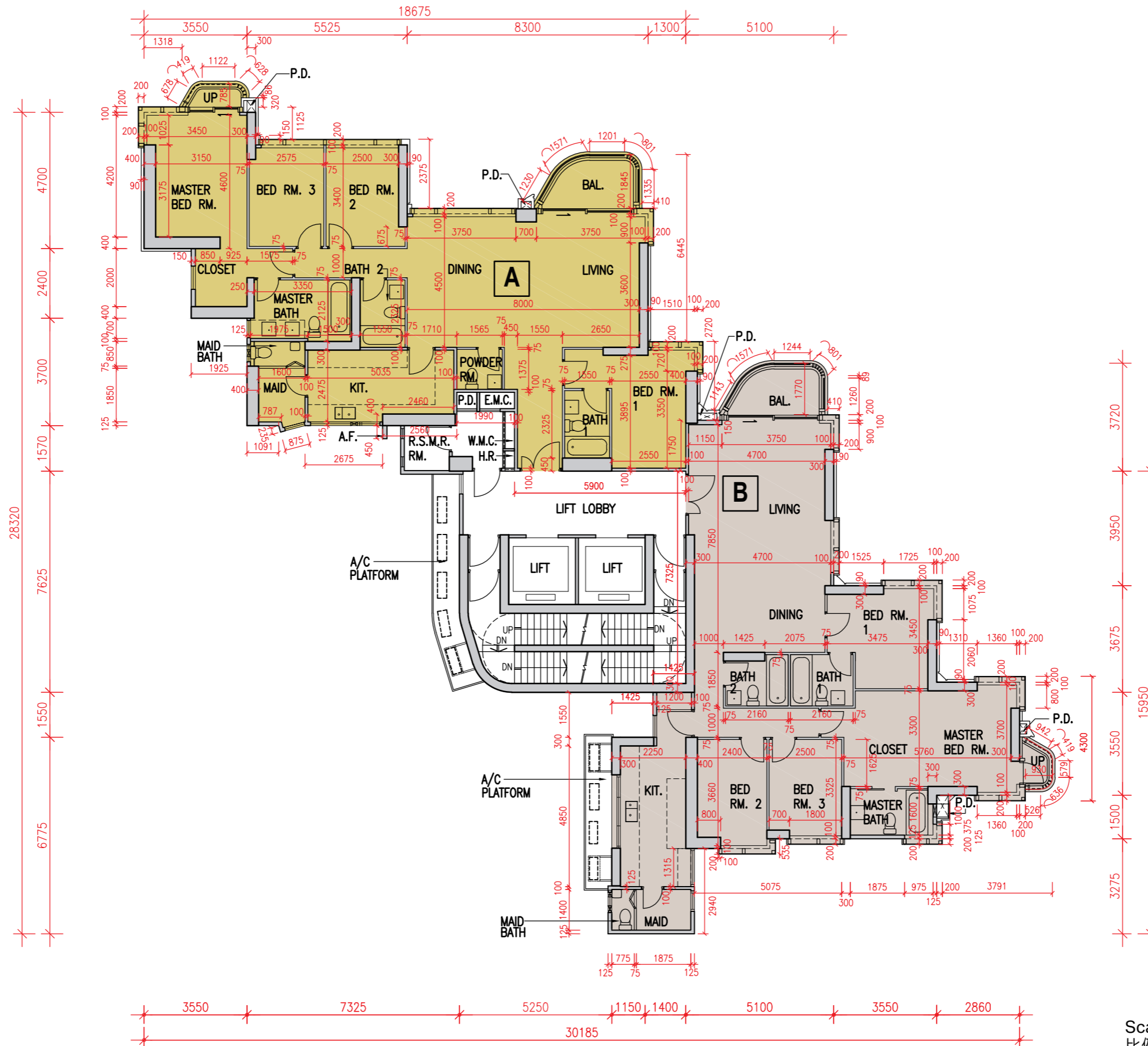
備註：

1. 樓面平面圖之尺規所列數字為以毫米標示之建築結構尺寸，並以四捨五入至整數。
2. 平面圖中顯示之名詞及簡稱之圖例請參閱本售樓說明書第22頁。

# Floor plans of residential properties in the development

## 發展項目的住宅物業的樓面平面圖

19/F to 23/F  
19樓至23樓



Scale: 0M/米 5M/米  
比例

## Floor plans of residential properties in the development 發展項目的住宅物業的樓面平面圖

### 19/F to 23/F 19樓至23樓

Description 描述	Floor 樓層	Unit 單位	
		A	B
Floor-to-floor height (refers to the height between the top surface of the structural slab of a floor and the top surface of the structural slab of its immediate upper floor) of each residential property (m) 每個住宅物業的層與層之間的高度 (指該樓層之石屎地台面與上一層石屎地台面之高度距離) (米)	19/F-22/F 19樓至22樓	3,500	
Thickness of the floor slabs (excluding plaster) of each residential property (mm) 每個住宅物業的樓板 (不包括灰泥) 厚度 (毫米)		150, 225, 300	150, 300
Floor-to-floor height (refers to the height between the top surface of the structural slab of a floor and the top surface of the structural slab of its immediate upper floor) of each residential property (m) 每個住宅物業的層與層之間的高度 (指該樓層之石屎地台面與上一層石屎地台面之高度距離) (米)	23/F 23樓	3,500 3,700	3,275 3,475 3,500 3,700
Thickness of the floor slabs (excluding plaster) of each residential property (mm) 每個住宅物業的樓板 (不包括灰泥) 厚度 (毫米)		150, 225, 300	150, 300

The internal areas of the residential properties on the upper floors will generally be slightly larger than those on the lower floors because of the reducing thickness of the structural walls on the upper floors (Note: This statement as required under section 10(2)(e) of Part 1 of Schedule 1 to the Residential Properties (First-hand Sales) Ordinance is not applicable to the Development).

因住宅物業的較高樓層的結構牆的厚度遞減，較高樓層的內部面積，一般比較低樓層的內部面積稍大(備註：此《一手住宅物業銷售條例》附表1第1部第10(2)(e)條規定之陳述並不適用於發展項目)。

Remarks :

- The dimensions in the floor plans are all structural dimensions in millimetre and rounded off to the nearest integer.
- Please refer to Page 22 of this sales brochure for legend of the terms and abbreviations shown in the floor plan.

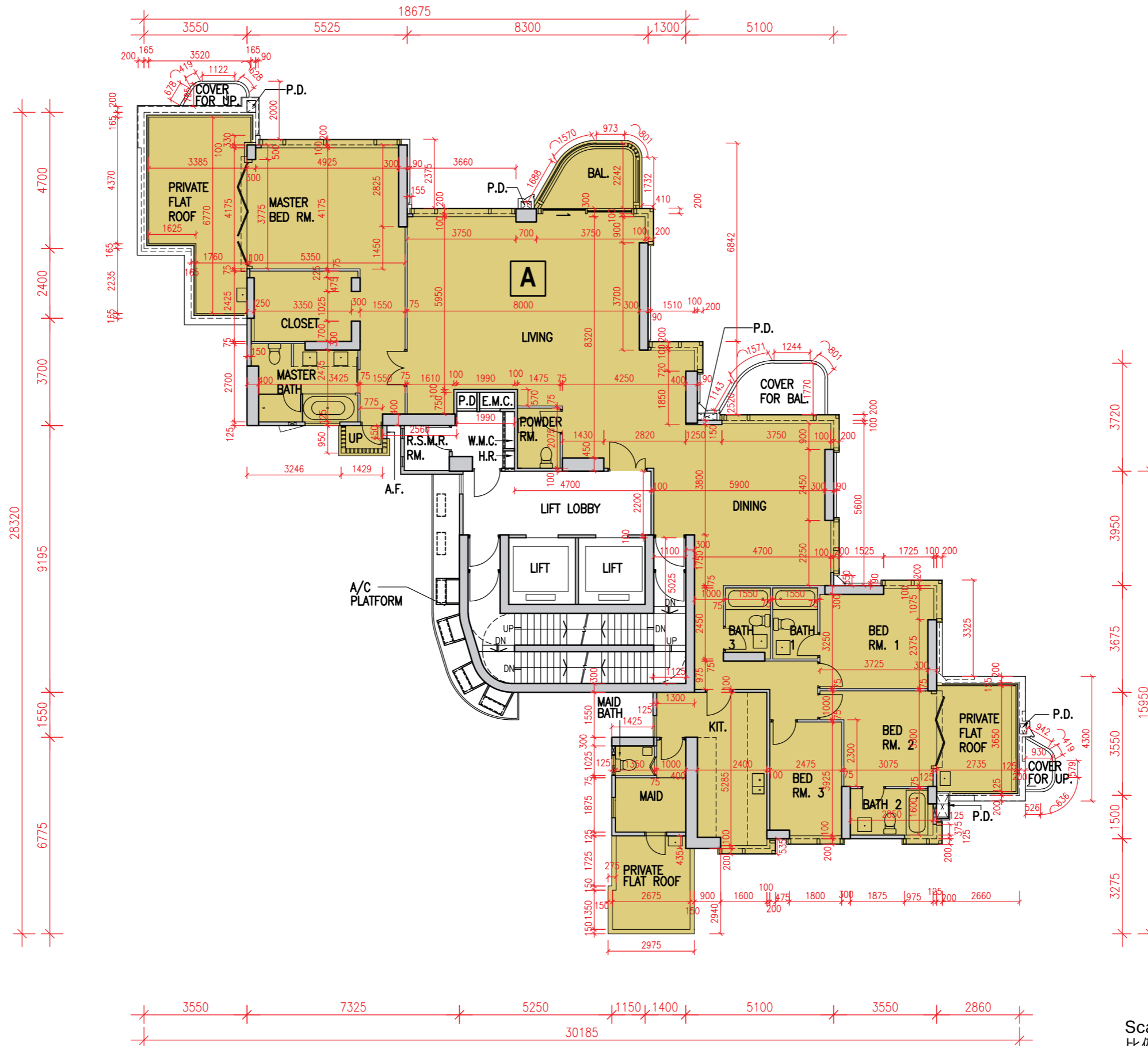
備註：

- 樓面平面圖之尺規所列數字為以毫米標示之建築結構尺寸，並以四捨五入至整數。
- 平面圖中顯示之名詞及簡稱之圖例請參閱本售樓說明書第22頁。

# Floor plans of residential properties in the development

## 發展項目的住宅物業的樓面平面圖

25/F  
25樓



Scale: 0M/米 5M/米  
比例

## Floor plans of residential properties in the development 發展項目的住宅物業的樓面平面圖

**25/F**  
**25樓**

Description 描述	Unit 單位
	A
Floor-to-floor height (refers to the height between the top surface of the structural slab of a floor and the top surface of the structural slab of its immediate upper floor) of each residential property (m) 每個住宅物業的層與層之間的高度 (指該樓層之石屎地台面與上一層石屎地台面之高度距離) (米)	3,500
Thickness of the floor slabs (excluding plaster) of each residential property (mm) 每個住宅物業的樓板 (不包括灰泥) 厚度 (毫米)	150, 300, 325

The internal areas of the residential properties on the upper floors will generally be slightly larger than those on the lower floors because of the reducing thickness of the structural walls on the upper floors (Note: This statement as required under section 10(2)(e) of Part 1 of Schedule 1 to the Residential Properties (First-hand Sales) Ordinance is not applicable to the Development).

因住宅物業的較高樓層的結構牆的厚度遞減，較高樓層的內部面積，一般比較低樓層的內部面積稍大(備註：此《一手住宅物業銷售條例》附表1第1部第10(2)(e)條規定之陳述並不適用於發展項目)。

**Remarks :**

1. The dimensions in the floor plans are all structural dimensions in millimetre and rounded off to the nearest integer.
2. Please refer to Page 22 of this sales brochure for legend of the terms and abbreviations shown in the floor plan.

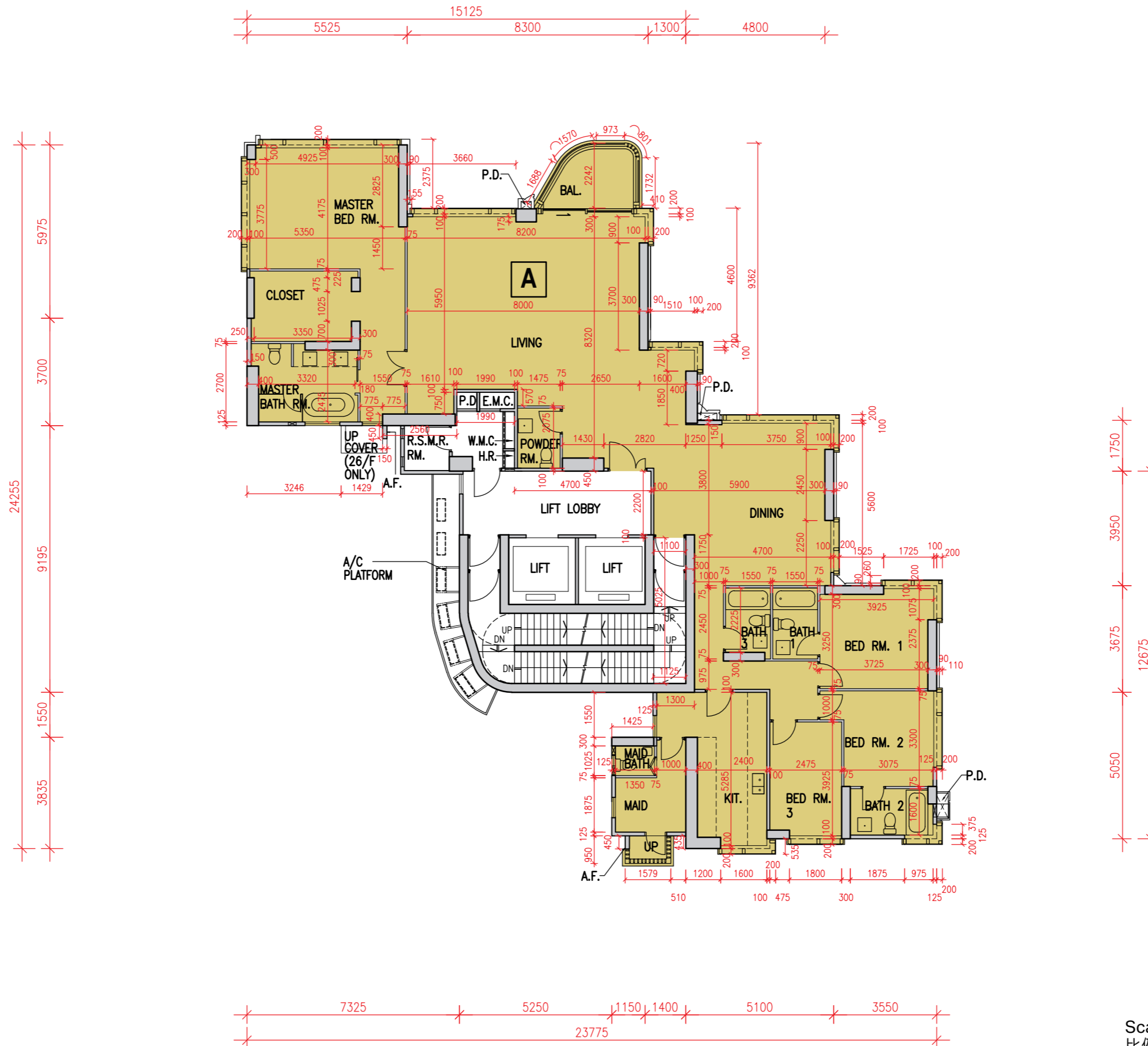
**備註：**

1. 樓面平面圖之尺規所列數字為以毫米標示之建築結構尺寸，並以四捨五入至整數。
2. 平面圖中顯示之名詞及簡稱之圖例請參閱本售樓說明書第22頁。

# Floor plans of residential properties in the development

## 發展項目的住宅物業的樓面平面圖

26/F to 28/F  
26樓至28樓



Scale: 0M/米 5M/米  
比例

## Floor plans of residential properties in the development 發展項目的住宅物業的樓面平面圖

### 26/F to 28/F 26樓至28樓

Description 描述	Floor 樓層	Unit 單位
		A
Floor-to-floor height (refers to the height between the top surface of the structural slab of a floor and the top surface of the structural slab of its immediate upper floor) of each residential property (m) 每個住宅物業的層與層之間的高度 (指該樓層之石屎地台面與上一層石屎地台面之高度距離) (米)	26/F-27/F 26樓至27樓	3,500
Thickness of the floor slabs (excluding plaster) of each residential property (mm) 每個住宅物業的樓板 (不包括灰泥) 厚度 (毫米)		150, 225, 300, 325
Floor-to-floor height (refers to the height between the top surface of the structural slab of a floor and the top surface of the structural slab of its immediate upper floor) of each residential property (m) 每個住宅物業的層與層之間的高度 (指該樓層之石屎地台面與上一層石屎地台面之高度距離) (米)	28/F 28樓	3,275 3,475 3,500 3,700
Thickness of the floor slabs (excluding plaster) of each residential property (mm) 每個住宅物業的樓板 (不包括灰泥) 厚度 (毫米)		150, 225, 300, 325

The internal areas of the residential properties on the upper floors will generally be slightly larger than those on the lower floors because of the reducing thickness of the structural walls on the upper floors (Note: This statement as required under section 10(2)(e) of Part 1 of Schedule 1 to the Residential Properties (First-hand Sales) Ordinance is not applicable to the Development).

因住宅物業的較高樓層的結構牆的厚度遞減，較高樓層的內部面積，一般比較低樓層的內部面積稍大(備註：此《一手住宅物業銷售條例》附表1第1部第10(2)(e)條規定之陳述並不適用於發展項目)。

Remarks :

- The dimensions in the floor plans are all structural dimensions in millimetre and rounded off to the nearest integer.
- Please refer to Page 22 of this sales brochure for legend of the terms and abbreviations shown in the floor plan.

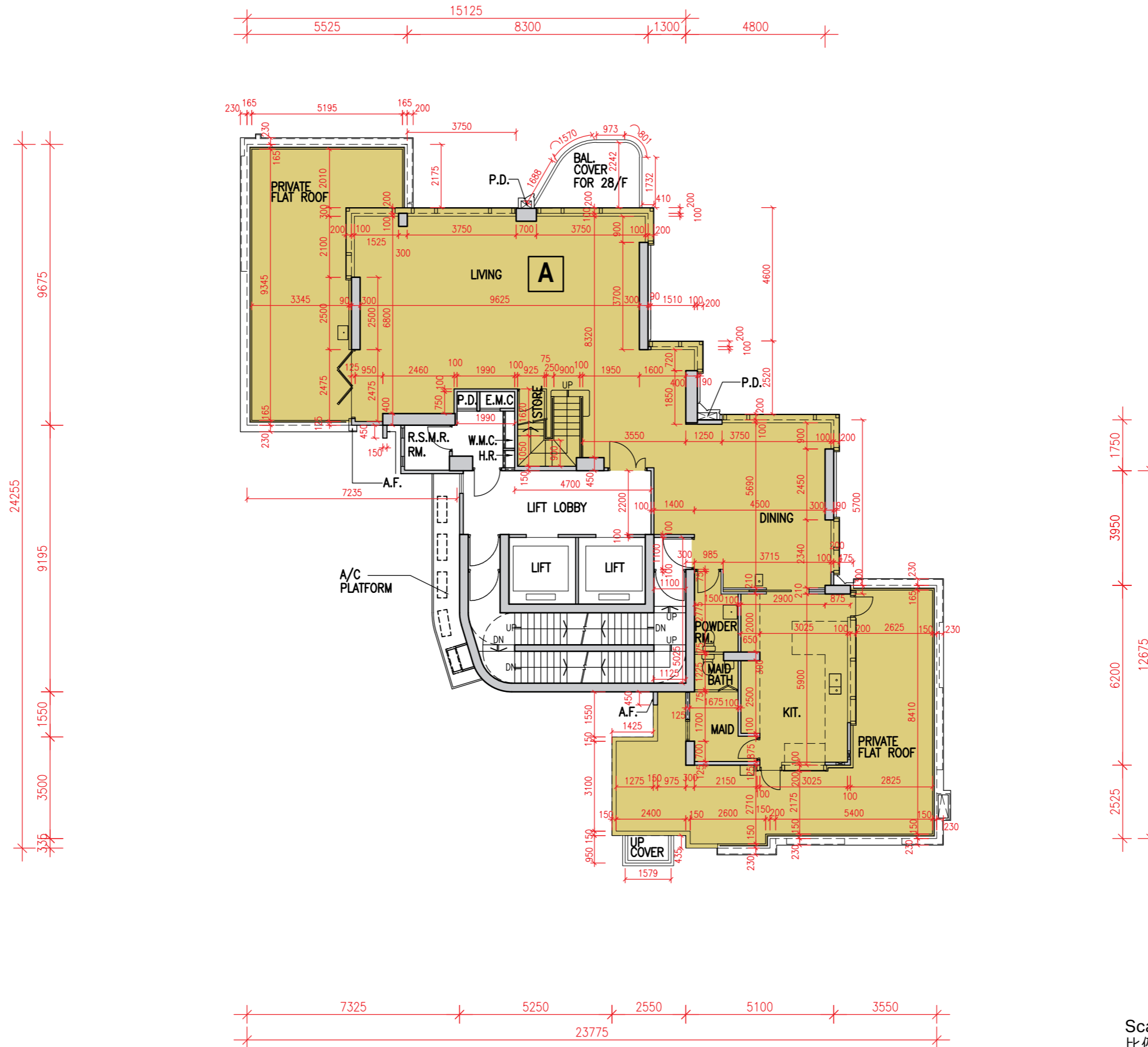
備註：

- 樓面平面圖之尺規所列數字為以毫米標示之建築結構尺寸，並以四捨五入至整數。
- 平面圖中顯示之名詞及簡稱之圖例請參閱本售樓說明書第22頁。

# Floor plans of residential properties in the development

## 發展項目的住宅物業的樓面平面圖

29/F  
29樓



Scale: 0M/米 5M/米  
比例

## Floor plans of residential properties in the development 發展項目的住宅物業的樓面平面圖

**29/F**  
**29樓**

Description 描述	Unit 單位
	A
Floor-to-floor height (refers to the height between the top surface of the structural slab of a floor and the top surface of the structural slab of its immediate upper floor) of each residential property (m) 每個住宅物業的層與層之間的高度 (指該樓層之石屎地台面與上一層石屎地台面之高度距離) (米)	3,350 3,500
Thickness of the floor slabs (excluding plaster) of each residential property (mm) 每個住宅物業的樓板 (不包括灰泥) 厚度 (毫米)	150, 175, 300, 325

The internal areas of the residential properties on the upper floors will generally be slightly larger than those on the lower floors because of the reducing thickness of the structural walls on the upper floors (Note: This statement as required under section 10(2)(e) of Part 1 of Schedule 1 to the Residential Properties (First-hand Sales) Ordinance is not applicable to the Development).

因住宅物業的較高樓層的結構牆的厚度遞減，較高樓層的內部面積，一般比較低樓層的內部面積稍大(備註：此《一手住宅物業銷售條例》附表1第1部第10(2)(e)條規定之陳述並不適用於發展項目)。

**Remarks :**

1. The dimensions in the floor plans are all structural dimensions in millimetre and rounded off to the nearest integer.
2. Please refer to Page 22 of this sales brochure for legend of the terms and abbreviations shown in the floor plan.

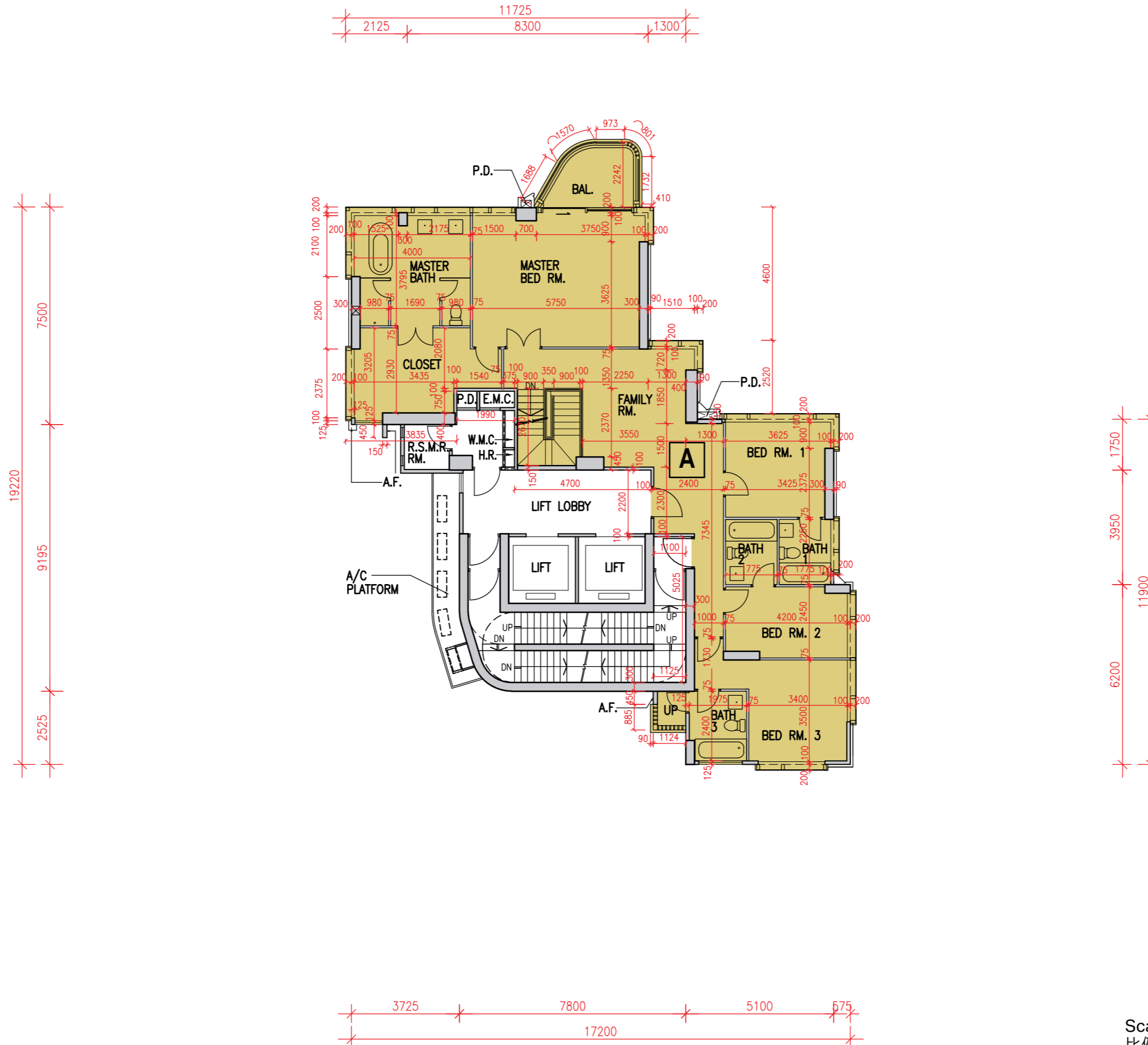
**備註：**

1. 樓面平面圖之尺規所列數字為以毫米標示之建築結構尺寸，並以四捨五入至整數。
2. 平面圖中顯示之名詞及簡稱之圖例請參閱本售樓說明書第22頁。

# Floor plans of residential properties in the development

## 發展項目的住宅物業的樓面平面圖

30/F  
30樓



Scale: 0M/米 5M/米  
比例

## Floor plans of residential properties in the development 發展項目的住宅物業的樓面平面圖

### 30/F 30樓

Description 描述	Unit 單位
	A
Floor-to-floor height (refers to the height between the top surface of the structural slab of a floor and the top surface of the structural slab of its immediate upper floor) of each residential property (m) 每個住宅物業的層與層之間的高度 (指該樓層之石屎地台面與上一層石屎地台面之高度距離) (米)	3,500 3,650
Thickness of the floor slabs (excluding plaster) of each residential property (mm) 每個住宅物業的樓板 (不包括灰泥) 厚度 (毫米)	150, 300, 325

The internal areas of the residential properties on the upper floors will generally be slightly larger than those on the lower floors because of the reducing thickness of the structural walls on the upper floors (Note: This statement as required under section 10(2)(e) of Part 1 of Schedule 1 to the Residential Properties (First-hand Sales) Ordinance is not applicable to the Development).

因住宅物業的較高樓層的結構牆的厚度遞減，較高樓層的內部面積，一般比較低樓層的內部面積稍大(備註：此《一手住宅物業銷售條例》附表1第1部第10(2)(e)條規定之陳述並不適用於發展項目)。

Remarks :

1. The dimensions in the floor plans are all structural dimensions in millimetre and rounded off to the nearest integer.
2. Please refer to Page 22 of this sales brochure for legend of the terms and abbreviations shown in the floor plan.

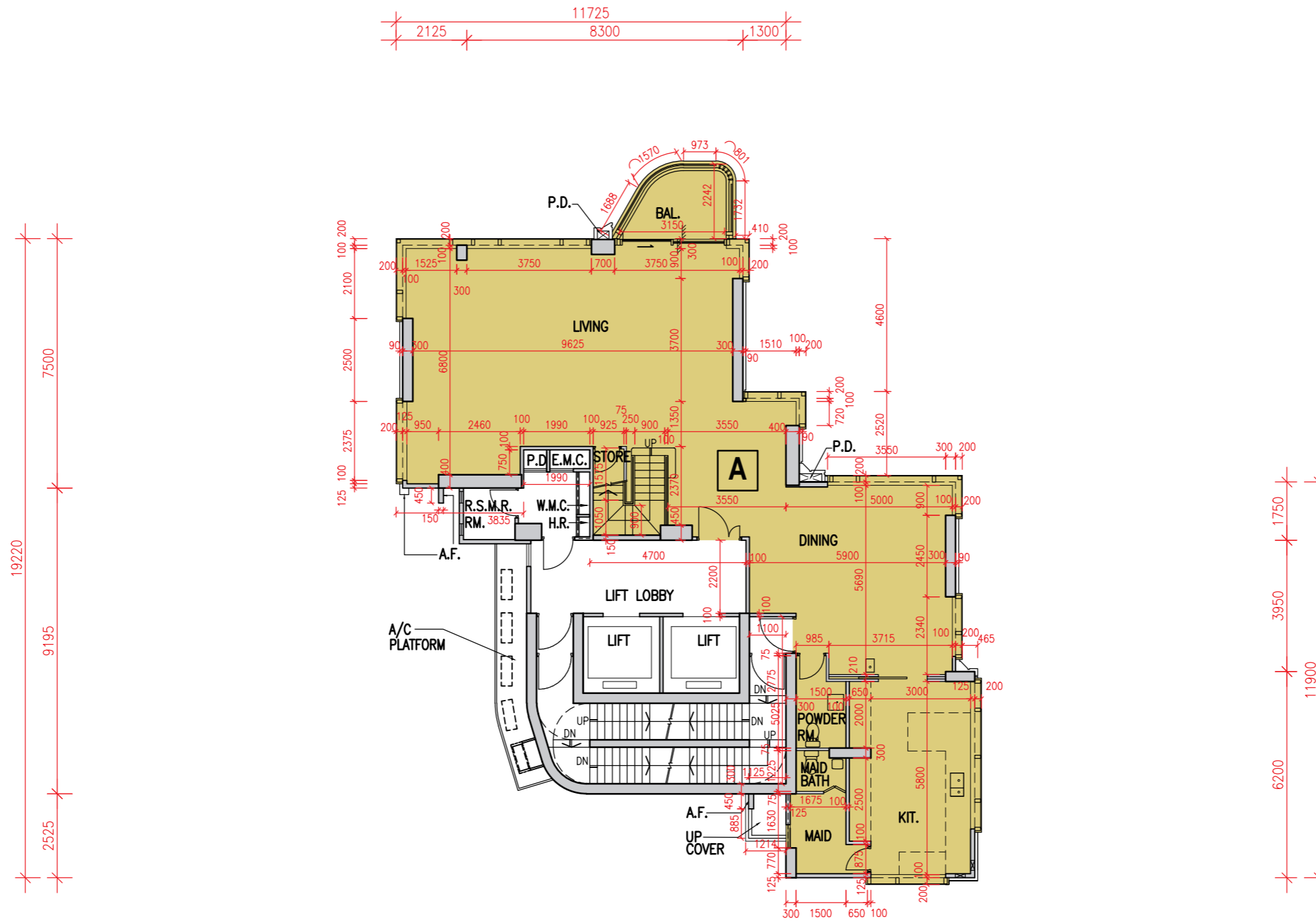
備註：

1. 樓面平面圖之尺規所列數字為以毫米標示之建築結構尺寸，並以四捨五入至整數。
2. 平面圖中顯示之名詞及簡稱之圖例請參閱本售樓說明書第22頁。

# Floor plans of residential properties in the development

## 發展項目的住宅物業的樓面平面圖

31/F  
31樓



Scale: 0M/米 5M/米  
比例

## Floor plans of residential properties in the development 發展項目的住宅物業的樓面平面圖

**31/F**  
**31樓**

Description 描述	Unit 單位
	A
Floor-to-floor height (refers to the height between the top surface of the structural slab of a floor and the top surface of the structural slab of its immediate upper floor) of each residential property (m) 每個住宅物業的層與層之間的高度 (指該樓層之石屎地台面與上一層石屎地台面之高度距離) (米)	3,350 3,500
Thickness of the floor slabs (excluding plaster) of each residential property (mm) 每個住宅物業的樓板 (不包括灰泥) 厚度 (毫米)	150, 175, 300, 325

The internal areas of the residential properties on the upper floors will generally be slightly larger than those on the lower floors because of the reducing thickness of the structural walls on the upper floors (Note: This statement as required under section 10(2)(e) of Part 1 of Schedule 1 to the Residential Properties (First-hand Sales) Ordinance is not applicable to the Development).

因住宅物業的較高樓層的結構牆的厚度遞減，較高樓層的內部面積，一般比較低樓層的內部面積稍大(備註：此《一手住宅物業銷售條例》附表1第1部第10(2)(e)條規定之陳述並不適用於發展項目)。

**Remarks :**

1. The dimensions in the floor plans are all structural dimensions in millimetre and rounded off to the nearest integer.
2. Please refer to Page 22 of this sales brochure for legend of the terms and abbreviations shown in the floor plan.

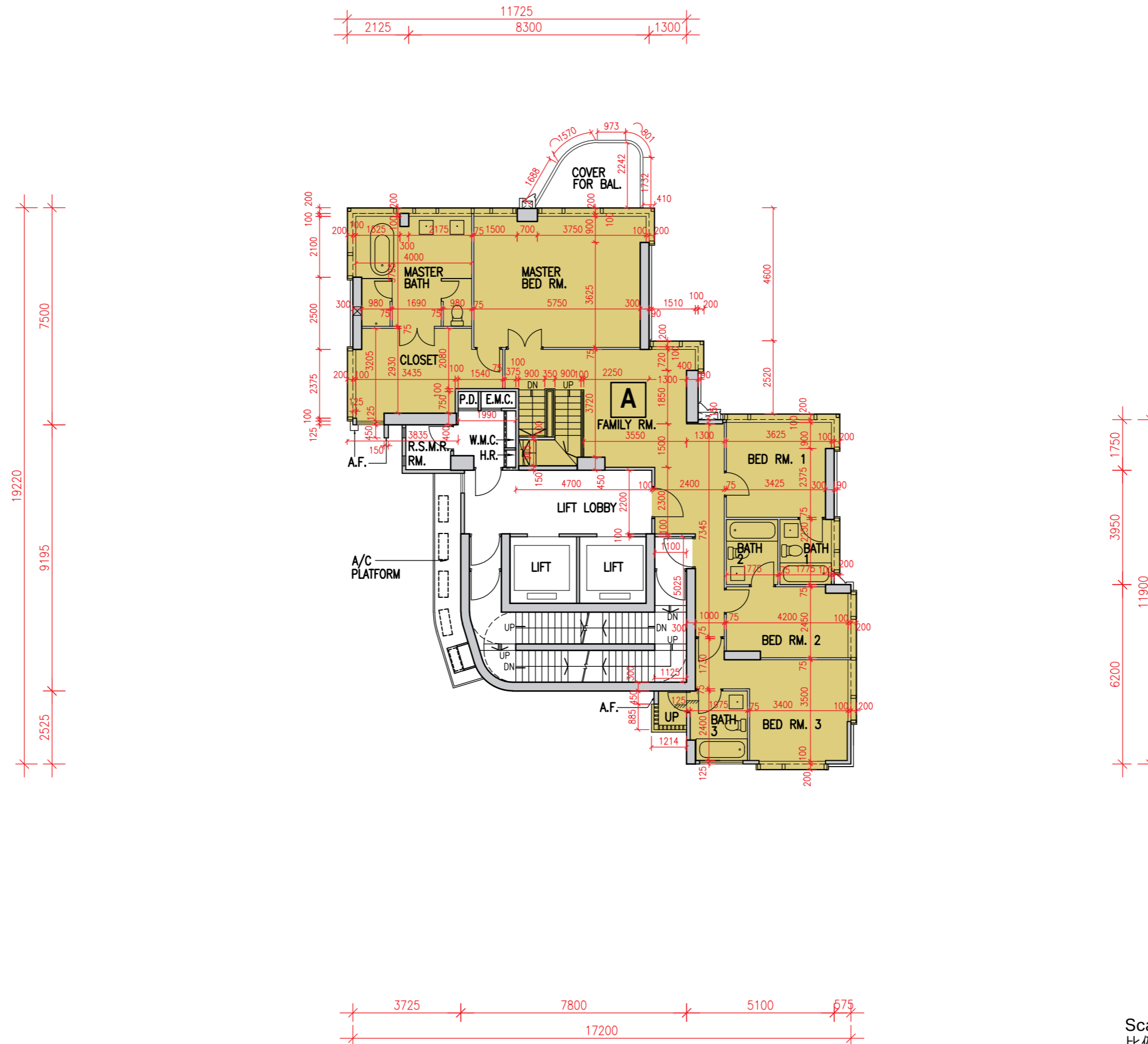
**備註：**

1. 樓面平面圖之尺規所列數字為以毫米標示之建築結構尺寸，並以四捨五入至整數。
2. 平面圖中顯示之名詞及簡稱之圖例請參閱本售樓說明書第22頁。

# Floor plans of residential properties in the development

## 發展項目的住宅物業的樓面平面圖

32/F  
32樓



Scale: 0M/米 5M/米  
比例

## Floor plans of residential properties in the development 發展項目的住宅物業的樓面平面圖

**32/F**  
**32樓**

Description 描述	Unit 單位
	A
Floor-to-floor height (refers to the height between the top surface of the structural slab of a floor and the top surface of the structural slab of its immediate upper floor) of each residential property (m) 每個住宅物業的層與層之間的高度 (指該樓層之石屎地台面與上一層石屎地台面之高度距離) (米)	3,700 4,000 4,150
Thickness of the floor slabs (excluding plaster) of each residential property (mm) 每個住宅物業的樓板 (不包括灰泥) 厚度 (毫米)	150, 300, 600

The internal areas of the residential properties on the upper floors will generally be slightly larger than those on the lower floors because of the reducing thickness of the structural walls on the upper floors (Note: This statement as required under section 10(2)(e) of Part 1 of Schedule 1 to the Residential Properties (First-hand Sales) Ordinance is not applicable to the Development).

因住宅物業的較高樓層的結構牆的厚度遞減，較高樓層的內部面積，一般比較低樓層的內部面積稍大(備註：此《一手住宅物業銷售條例》附表1第1部第10(2)(e)條規定之陳述並不適用於發展項目)。

**Remarks :**

1. The dimensions in the floor plans are all structural dimensions in millimetre and rounded off to the nearest integer.
2. Please refer to Page 22 of this sales brochure for legend of the terms and abbreviations shown in the floor plan.

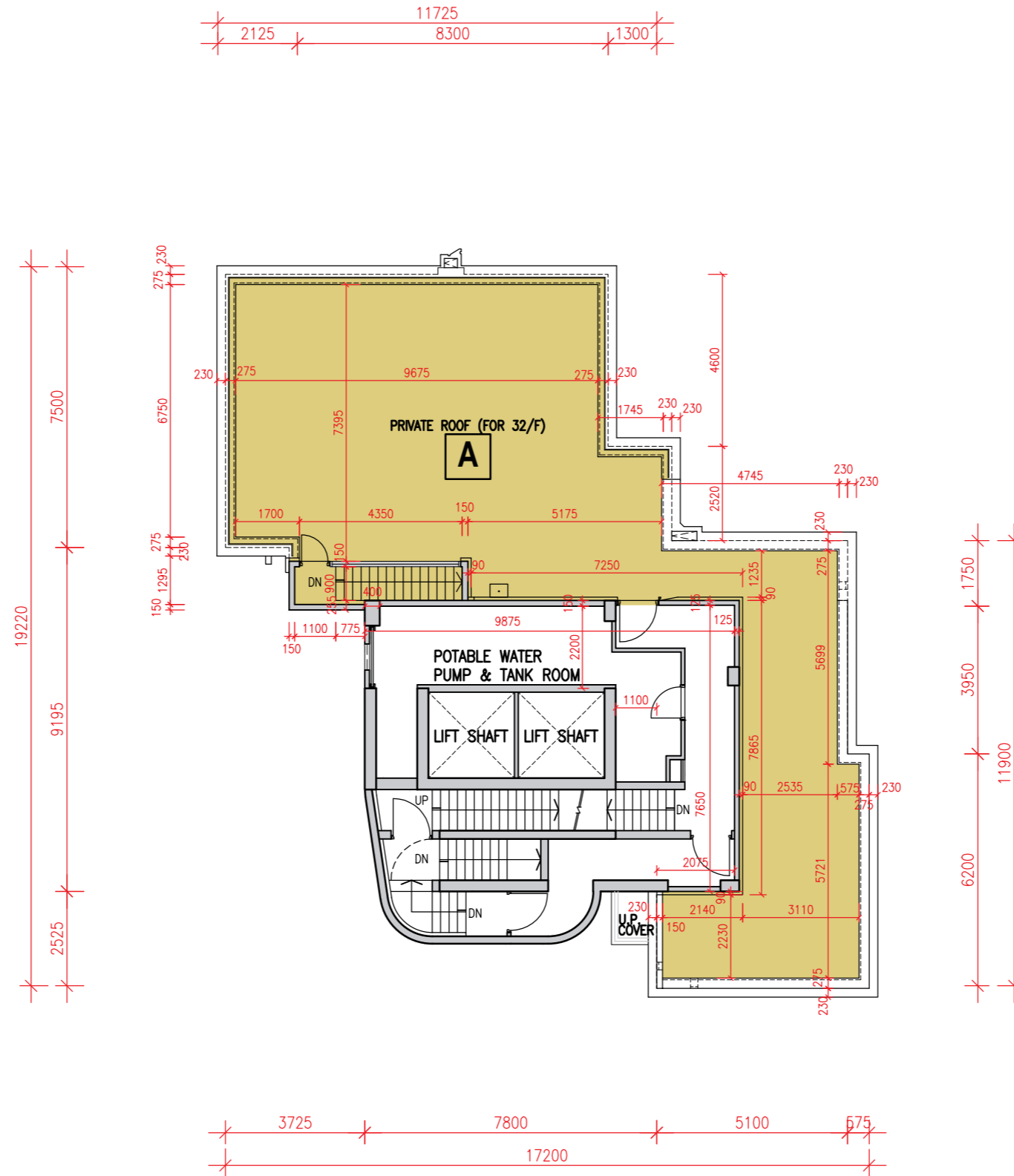
**備註：**

1. 樓面平面圖之尺規所列數字為以毫米標示之建築結構尺寸，並以四捨五入至整數。
2. 平面圖中顯示之名詞及簡稱之圖例請參閱本售樓說明書第22頁。

# Floor plans of residential properties in the development

## 發展項目的住宅物業的樓面平面圖

Roof  
天台



Scale: 0M/米 5M/米  
比例

## Floor plans of residential properties in the development 發展項目的住宅物業的樓面平面圖

### Roof 天台

Description 描述	Unit 單位
	A
Floor-to-floor height (refers to the height between the top surface of the structural slab of a floor and the top surface of the structural slab of its immediate upper floor) of each residential property (m) 每個住宅物業的層與層之間的高度 (指該樓層之石屎地台面與上一層石屎地台面之高度距離) (米)	Not Applicable 不適用
Thickness of the floor slabs (excluding plaster) of each residential property (mm) 每個住宅物業的樓板 (不包括灰泥) 厚度 (毫米)	Not Applicable 不適用

The internal areas of the residential properties on the upper floors will generally be slightly larger than those on the lower floors because of the reducing thickness of the structural walls on the upper floors (Note: This statement as required under section 10(2)(e) of Part 1 of Schedule 1 to the Residential Properties (First-hand Sales) Ordinance is not applicable to the Development).

因住宅物業的較高樓層的結構牆的厚度遞減，較高樓層的內部面積，一般比較低樓層的內部面積稍大(備註：此《一手住宅物業銷售條例》附表1第1部第10(2)(e)條規定之陳述並不適用於發展項目)。

#### Remarks :

1. The dimensions in the floor plans are all structural dimensions in millimetre and rounded off to the nearest integer.
2. Please refer to Page 22 of this sales brochure for legend of the terms and abbreviations shown in the floor plan.

#### 備註：

1. 樓面平面圖之尺規所列數字為以毫米標示之建築結構尺寸，並以四捨五入至整數。
2. 平面圖中顯示之名詞及簡稱之圖例請參閱本售樓說明書第22頁。