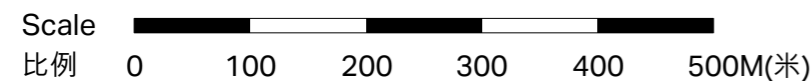
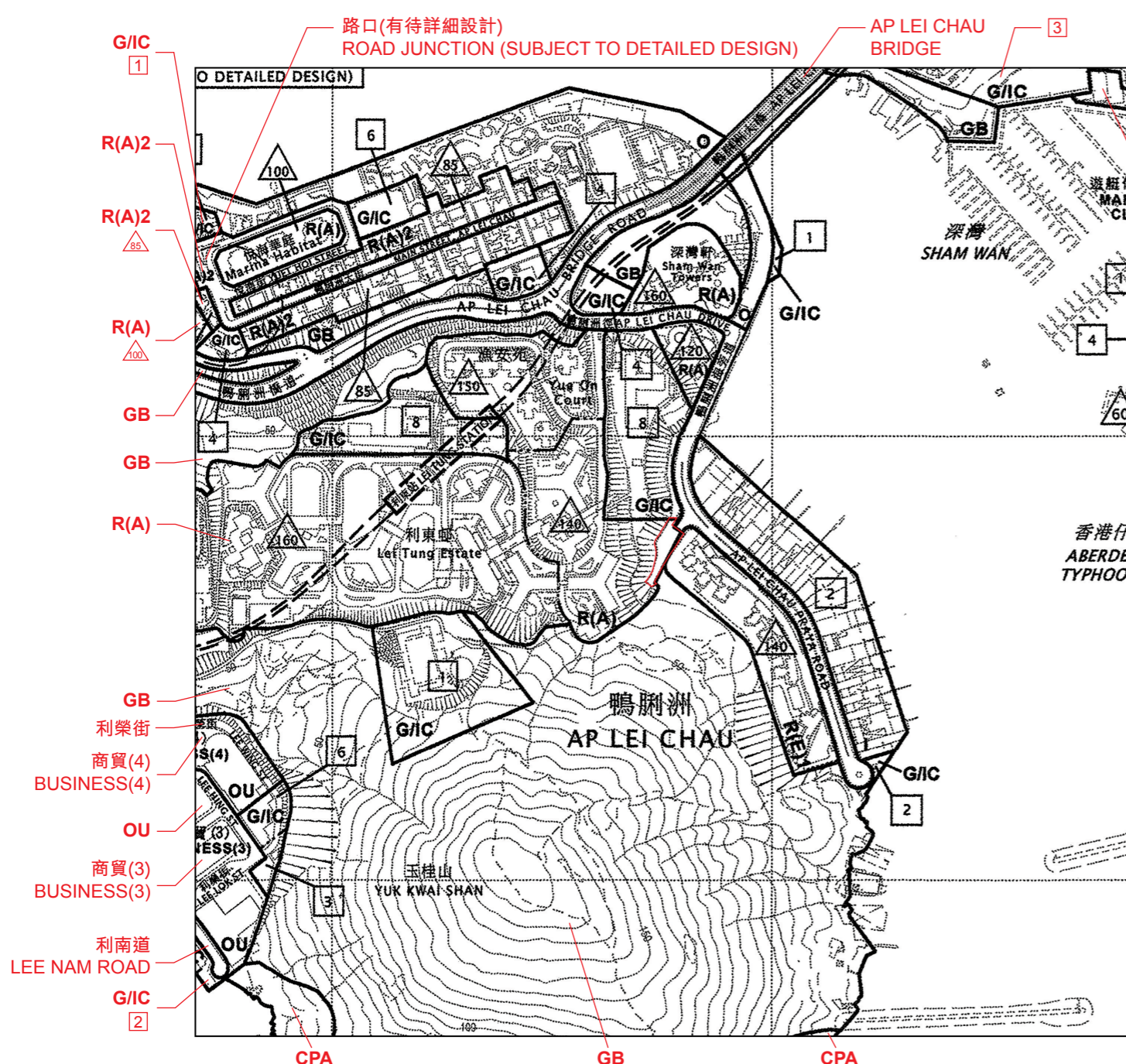


Outline zoning plan etc. relating to the development

關於發展項目的分區計劃大綱圖等

Extracted from the approved Aberdeen and Ap Lei Chau (HPA 15 & 16) Outline Zoning Plan, Plan No. S/H15/33, gazetted on 31 August 2018, with adjustments where necessary.

摘錄自2018年8月31日刊憲之香港仔及鴨脷洲(港島規劃區第15及16區)分區計劃大綱圖核准圖，圖則編號為S/H15/33，經修正處理。



Location of the Development
發展項目的位置



Notation 圖例

Zones 地帶

- Residential (Group A) 住宅(甲類) R(A)
- Residential (Group E) 住宅(戊類) R(E)
- Industrial 工業 I
- Government, Institution Or Community
政府、機構或社區 G/IC
- Open Space 休憩用地 O
- Other Specified Uses
其他指定用途 OU
- Green Belt 綠化地帶 GB
- Coastal Protection Area 海岸保護區 CPA

Communications 交通

- Railway And Station (Underground)
鐵路及車站(地下)
- Major Road And Junction
主要道路及路口
- Elevated Road 高架道路

Miscellaneous 其他

- Building Height Control Zone Boundary
建築物高度管制區界線
- Maximum Building Height
(In Metres Above Principal Datum)
最高建築物高度(在主水平基準上若干米) 100
- Maximum Building Height
(In Number Of Storeys)
最高建築物高度(樓層數目) 8

Survey and Mapping Office, Lands Department, The Government of HKSAR © Copyright reserved – reproduction by permission only.

香港特別行政區政府地政總署測繪處版權所有，未經許可，不得複製。

Remark :

Due to technical reasons, this outline zoning plan has shown more than the area required under the Residential Properties (First-hand Sales) Ordinance.

備註：

因技術性問題，此分區計劃大綱圖所顯示的範圍超過《一手住宅物業銷售條例》的規定。