

The notes and legends on this page apply to all pages of "Floor plans of residential properties in the Development".

在本頁上備註和圖例適用於全部的「發展項目的住宅物業的樓面平面圖」頁面。

Legend of The Terms and Abbreviations for Floor Plans

樓面平面圖中所使用名詞及簡稱之圖例

Ⓐ	= Fireman's Lift 消防員升降機
ARCH. FEATURE	= Architectural Feature 建築裝飾
A.C.	= Air-conditioner Platform 冷氣機平台
A.C. PLINTH	= Air-conditioner Plinth 冷氣機基座
A.C. HOOD AT H/L	= Air-conditioner Hood at High Level 高位之空調機罩
BAL. & UP	= Balcony & Utility Platform 露台及工作平台
BATH	= Bathroom 浴室
B.R.	= Bedroom 睡房
B.R.1	= Bedroom 1 睡房 1
B.R.2	= Bedroom 2 睡房 2
CANOPY TOP OF BAL. & U.P.	= Canopy Top of Balcony & Utility Platform 露台及工作平台上蓋
COMBINED BAL. U.P. & A.C. ABOVE	= Combined Balcony & Utility Platform & Air-conditioner Platform Above 合併露台及工作平台及冷氣機平台置上
COMMON AREA FOR MAINTENANCE ONLY	= Common Area for Maintenance Only 僅供維修用的公用地方
Ⓓ	= Accessible Lift 暢通易達升降機
DIN.	= Dining Room 飯廳
DN	= Down 落
DOG HOUSE	= Dog House 喉管罩室
ELE	= Electrical Duct 電線槽
F.LIFT LOBBY	= Firemen's Lift Lobby 消防升降機大堂
F.H.	= Fire Hydrant 消防柱

Notes:

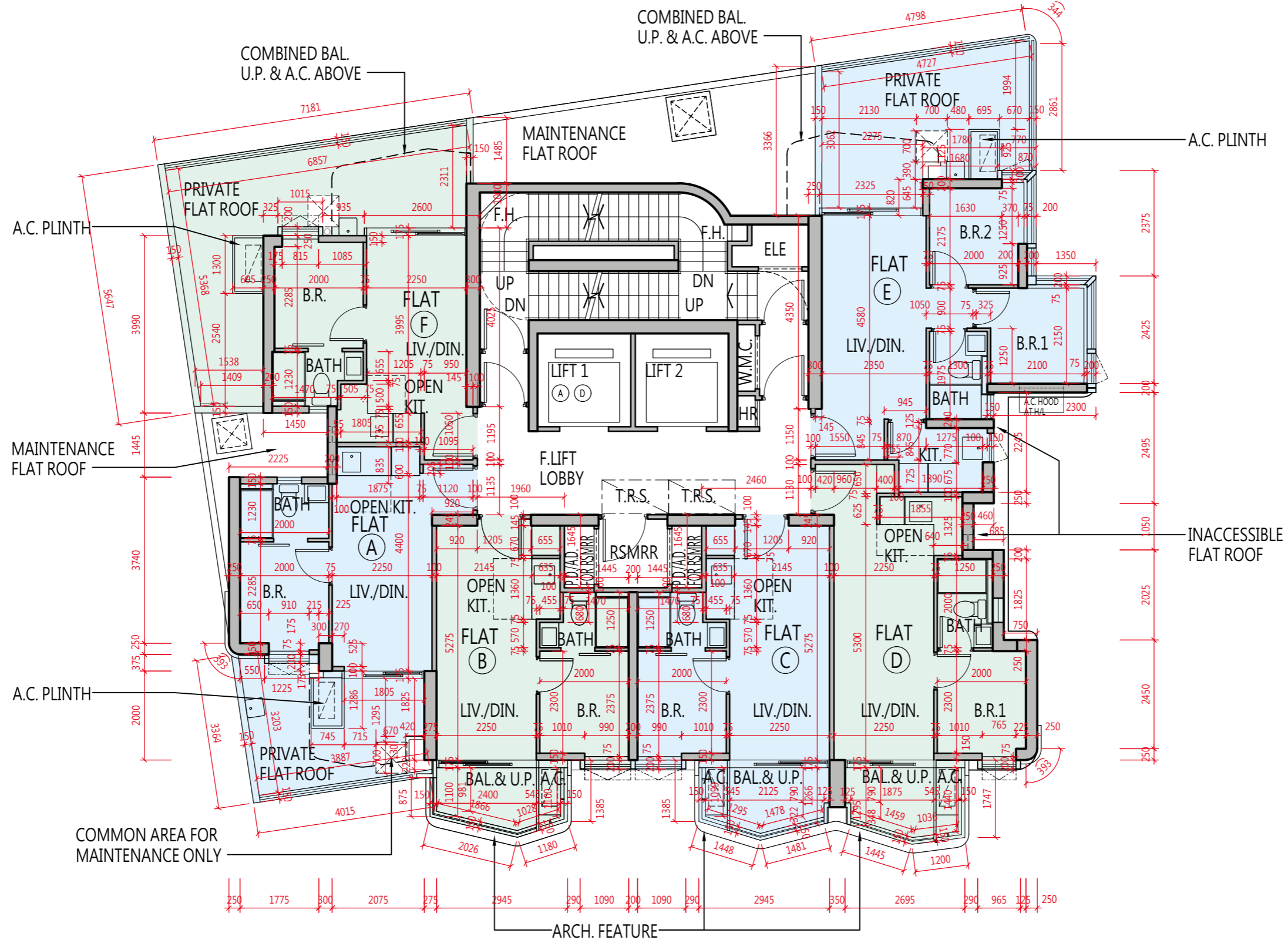
- Common pipes exposed or enclosed in cladding may be located at the balcony, utility platform, flat roof or external wall of some residential properties.
- There may be sunken slabs at some parts of the ceiling inside some residential properties for the installation of mechanical and electrical services of the floor above or due to the structural, architectural and/or decoration design requirements of the floor above.
- There may be ceiling bulkheads or false ceiling inside some residential properties for the installation of air-conditioning conduits and/or other mechanical and electrical services.
- The dimensions of the floor plans are all structural dimensions in millimeter.
- Those icons of fittings and appliances shown on the floor plans of residential properties like bathtubs, wash basins, water closets, shower cubicles, sink units, cabinets (if any) etc. are prepared in accordance with the latest approved building plans. Their shapes, dimensions, scales may be differed from the fittings and appliances actually provided and they are for indication and reference only.
- 4/F, 13/F, 14/F and 24/F are omitted.

HR	= Hose Reel 消防喉轆
INACCESSIBLE FLAT ROOF	= Inaccessible Flat Roof 無法進入的平台
KIT.	= Kitchen 廚房
LIFT CONTROL PANEL	= Lift Control Panel 升降機控制面板
LIFT 1	= Lift 1 升降機 1
LIFT 2	= Lift 2 升降機 2
LAV.	= Lavatory 洗手間
LIV.	= Living Room 客廳
LIV./DIN.	= Living Room/Dining Room 客廳 / 飯廳
LIFT 2 OVERRUN	= Lift 2 Overrun 升降機 2 槽頂
MAINTENANCE FLAT ROOF	= Maintenance Flat Roof 維修平台
M.B.R.	= Master Bedroom 主人睡房
M.BATH	= Master Bathroom 主人浴室
OPEN KIT.	= Open Kitchen 開放式廚房
P.D.	= Pipe Duct 管槽
P.D./A.D. FOR RSMRR	= Pipe Duct/Air Duct for Refuse Storage And Material Recovery Room 供垃圾及物料回收房的管槽 / 風管槽
PRIVATE FLAT ROOF	= Private Flat Roof 私人平台
PRIVATE ROOF	= Private Roof 私人天台
PUMP ROOM	= Pump Room 泵房
RSMRR	= Refuse Storage And Material Recovery Room 垃圾及物料回收房
UTILITY RM.	= Utility Room 雜物房
T.R.S.	= Temporary Refuge Space 臨時庇護處
UP	= Up 上
W.M.C.	= Water Meter Cabinet 水錶櫃

備註：

- 部份住宅物業的露台、工作平台、平台或外牆或設有外露之公用喉管，或外牆裝飾板內藏之公用喉管。
- 部份住宅物業內之部分天花或有跌級樓板，用以安裝上層之機電設備或配合上層之結構、建築設計及/或裝修設計上的需要。
- 部份住宅物業內或設有假陣或假天花用以安裝冷氣喉管及/或其他機電設備。
- 樓面平面圖所列之數字為以毫米標示之建築結構尺寸。
- 各住宅物業的樓面平面圖內所展示之裝置及設備的圖標如浴缸、洗面盆、座廁、淋浴間、洗滌盆、櫃(如有)等乃根據最新經批准的建築圖則擬備，其形狀、尺寸、比例或與實際提供的裝置及設備存在差異，僅供示意及參考之用。
- 不設4樓、13樓、14樓及24樓。

5/F
5樓



SCALE 比例

0 5M/米

11

FLOOR PLANS OF RESIDENTIAL PROPERTIES IN THE DEVELOPMENT 發展項目的住宅物業的樓面平面圖

Description 描述	Floor 樓層	Flat 單位					
		A	B	C	D	E	F
Thickness of floor slab (excluding plaster) of each residential property (mm) 每個住宅物業的樓板（不包括灰泥）的厚度（毫米）	5/F 5樓	150, 180	150, 180	150, 180	150, 180	150	150, 180
The floor-to-floor height (refers to the height between the top surface of the structural slab of a floor and the top surface of the structural slab of its immediate upper floor) of each residential property (mm) 每個住宅物業的層與層之間的高度（指該樓層之石屎地台面與上一層石屎地台面之高度距離）（毫米）		3100, 3370, 3400, 3500	3100, 3200, 3370, 3400	3100, 3200, 3370, 3400	3100, 3370, 3400	3100, 3370, 3400, 3500	3100, 3370, 3400, 3500

The internal areas on the residential properties on the upper floors will generally be slightly larger than on the lower floors because of the reducing thickness of the structural walls on the upper floors.

Notes:

- 4/F, 13/F, 14/F and 24/F are omitted.
- Please refer to page 19 of this sales brochure for notes, legend of the terms and abbreviations shown in the floor plans.
- The dimensions of the floor plans are all structural dimensions in millimeter.

因住宅物業的較高樓層的結構牆的厚度遞減，較高樓層的內部面積，一般比較低樓層的內部面積稍大。

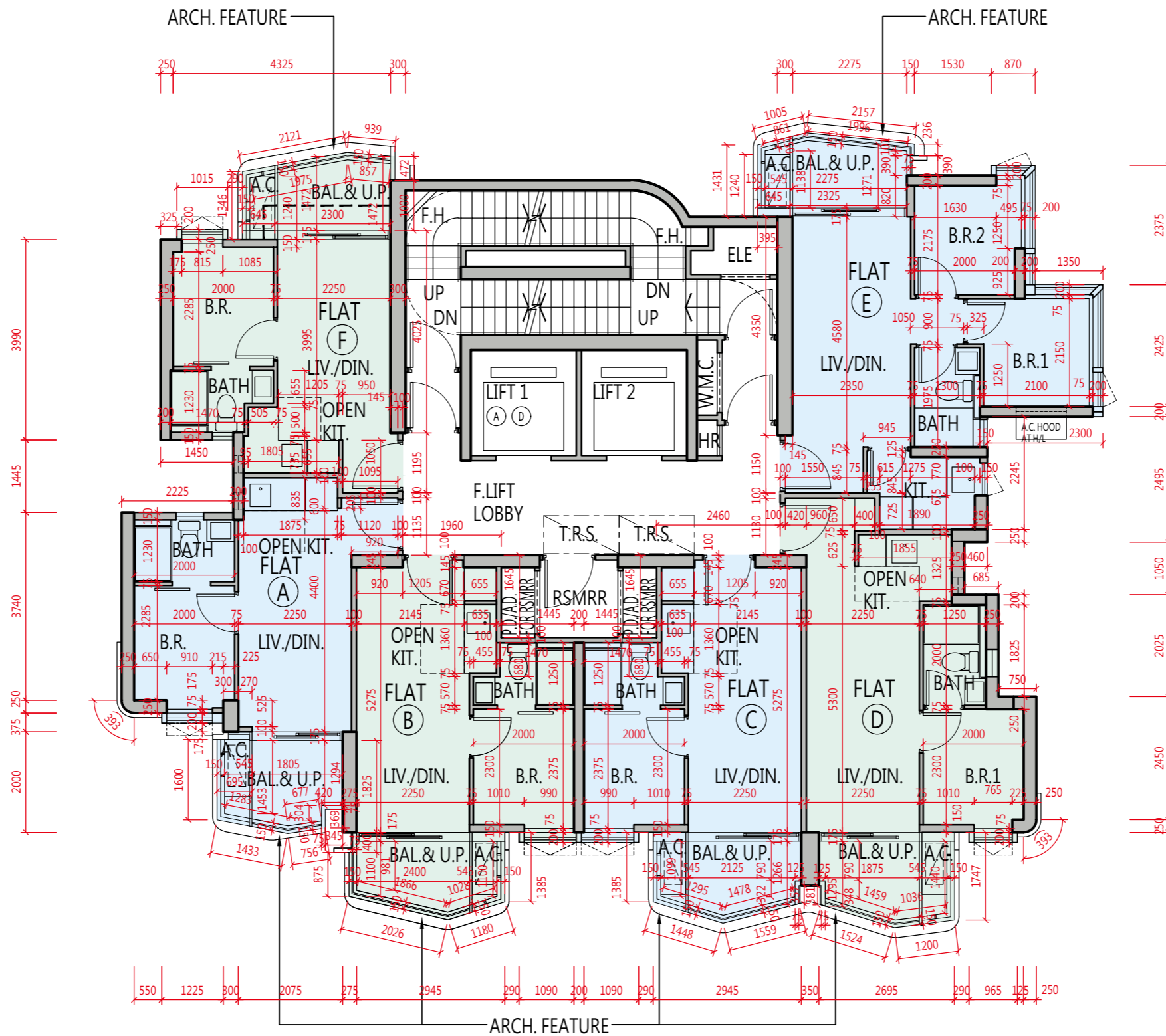
備註：

- 不設4樓、13樓、14樓及24樓。
- 樓面平面圖中顯示之備註、名詞及簡稱，請參閱本售樓說明書第19頁。
- 樓面平面圖所列之尺寸數字為以毫米標示之建築結構尺寸。

11

FLOOR PLANS OF RESIDENTIAL PROPERTIES IN THE DEVELOPMENT 發展項目的住宅物業的樓面平面圖

6/F - 12/F, 15/F - 23/F and 25/F - 26/F
6樓至12樓、15樓至23樓及25樓至26樓



SCALE 比例



11

FLOOR PLANS OF RESIDENTIAL PROPERTIES IN THE DEVELOPMENT 發展項目的住宅物業的樓面平面圖

Description 描述	Floor 樓層	Flat 單位					
		A	B	C	D	E	F
Thickness of floor slab (excluding plaster) of each residential property (mm) 每個住宅物業的樓板 (不包括灰泥) 的厚度 (毫米)	6/F - 12/F, 15/F - 23/F and 25/F 6樓至12樓、15樓至23樓 及25樓	150, 180	150, 180	150, 180	150, 180	150	150, 180
The floor-to-floor height (refers to the height between the top surface of the structural slab of a floor and the top surface of the structural slab of its immediate upper floor) of each residential property (mm) 每個住宅物業的層與層之間的高度 (指該樓層之石屎地台面與上一層石屎地台面之高度距離) (毫米)		3100, 3370, 3400	3100, 3200, 3370, 3400	3100, 3200, 3370, 3400	3100, 3370, 3400	3100, 3370, 3400	3100, 3370, 3400
Thickness of floor slab (excluding plaster) of each residential property (mm) 每個住宅物業的樓板 (不包括灰泥) 的厚度 (毫米)	26/F 26樓	150	150, 180	150, 180	150, 180	150	150, 180, 350
The floor-to-floor height (refers to the height between the top surface of the structural slab of a floor and the top surface of the structural slab of its immediate upper floor) of each residential property (mm) 每個住宅物業的層與層之間的高度 (指該樓層之石屎地台面與上一層石屎地台面之高度距離) (毫米)		3100, 3400	3100, 3200, 3370, 3400	3100, 3200, 3370, 3400	3100, 3370, 3400	3100, 3370, 3400	3050, 3100, 3370, 3400, 3600

The internal areas on the residential properties on the upper floors will generally be slightly larger than on the lower floors because of the reducing thickness of the structural walls on the upper floors.

Notes:

- 4/F, 13/F, 14/F and 24/F are omitted.
- Please refer to page 19 of this sales brochure for notes, legend of the terms and abbreviations shown in the floor plans.
- The dimensions of the floor plans are all structural dimensions in millimeter.

因住宅物業的較高樓層的結構牆的厚度遞減，較高樓層的內部面積，一般比較低樓層的內部面積稍大。

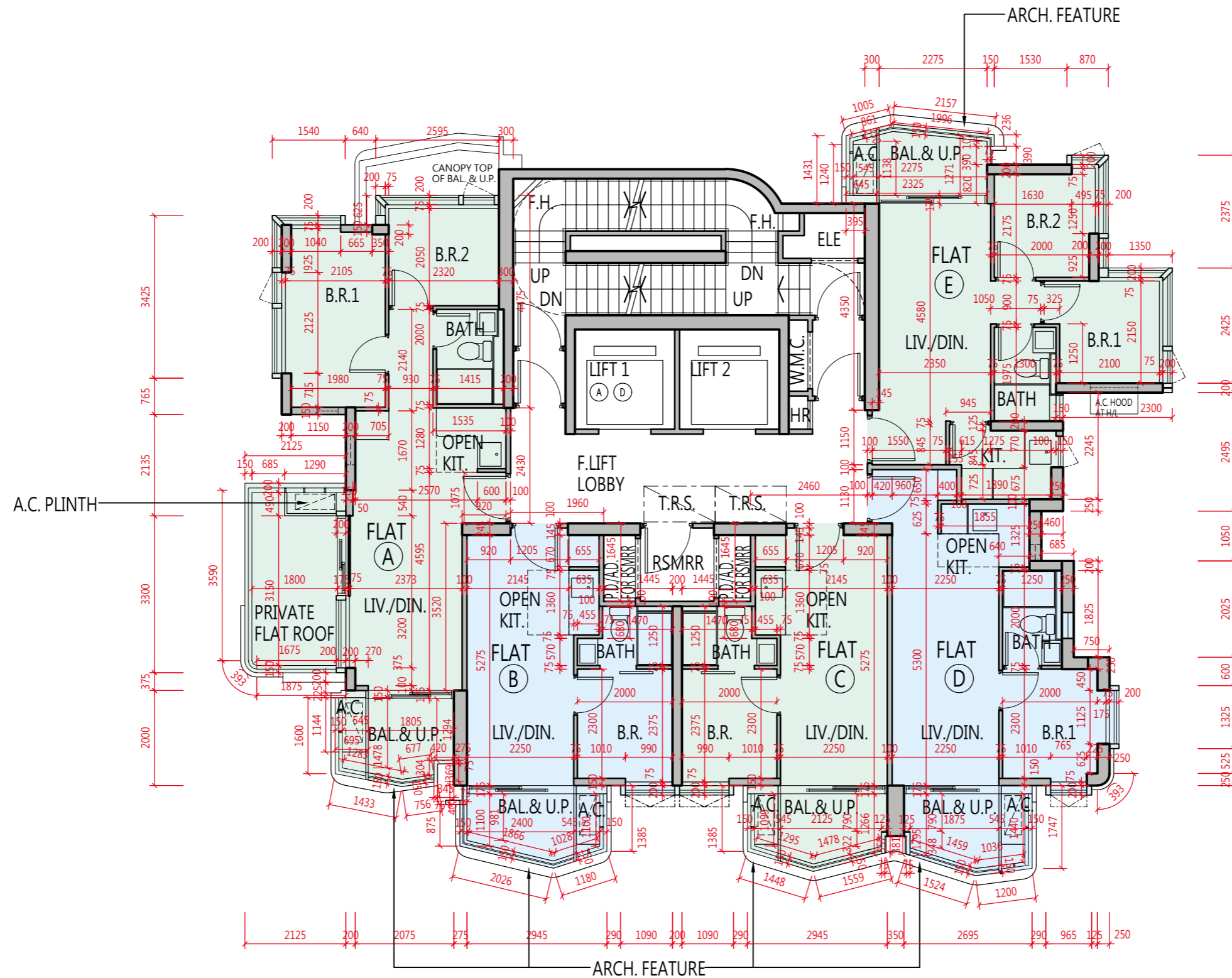
備註：

- 不設4樓、13樓、14樓及24樓。
- 樓面平面圖中顯示之備註、名詞及簡稱，請參閱本售樓說明書第19頁。
- 樓面平面圖所列之尺寸數字為以毫米標示之建築結構尺寸。

11

FLOOR PLANS OF RESIDENTIAL PROPERTIES IN THE DEVELOPMENT 發展項目的住宅物業的樓面平面圖

27/F
27樓



SCALE 比例



11

FLOOR PLANS OF RESIDENTIAL PROPERTIES IN THE DEVELOPMENT 發展項目的住宅物業的樓面平面圖

Description 描述	Floor 樓層	Flat 單位				
		A	B	C	D	E
Thickness of floor slab (excluding plaster) of each residential property (mm) 每個住宅物業的樓板（不包括灰泥）的厚度（毫米）	27/F 27樓	150	150, 180	150, 180	150, 180	150
The floor-to-floor height (refers to the height between the top surface of the structural slab of a floor and the top surface of the structural slab of its immediate upper floor) of each residential property (mm) 每個住宅物業的層與層之間的高度（指該樓層之石屎地台面與上一層石屎地台面之高度距離）（毫米）		3050, 3100, 3370, 3400	3100, 3200, 3370, 3400	3100, 3200, 3370, 3400	3100, 3370, 3400	3100, 3370, 3400

The internal areas on the residential properties on the upper floors will generally be slightly larger than on the lower floors because of the reducing thickness of the structural walls on the upper floors.

Notes:

- 4/F, 13/F, 14/F and 24/F are omitted.
- Please refer to page 19 of this sales brochure for notes, legend of the terms and abbreviations shown in the floor plans.
- The dimensions of the floor plans are all structural dimensions in millimeter.

因住宅物業的較高樓層的結構牆的厚度遞減，較高樓層的內部面積，一般比較低樓層的內部面積稍大。

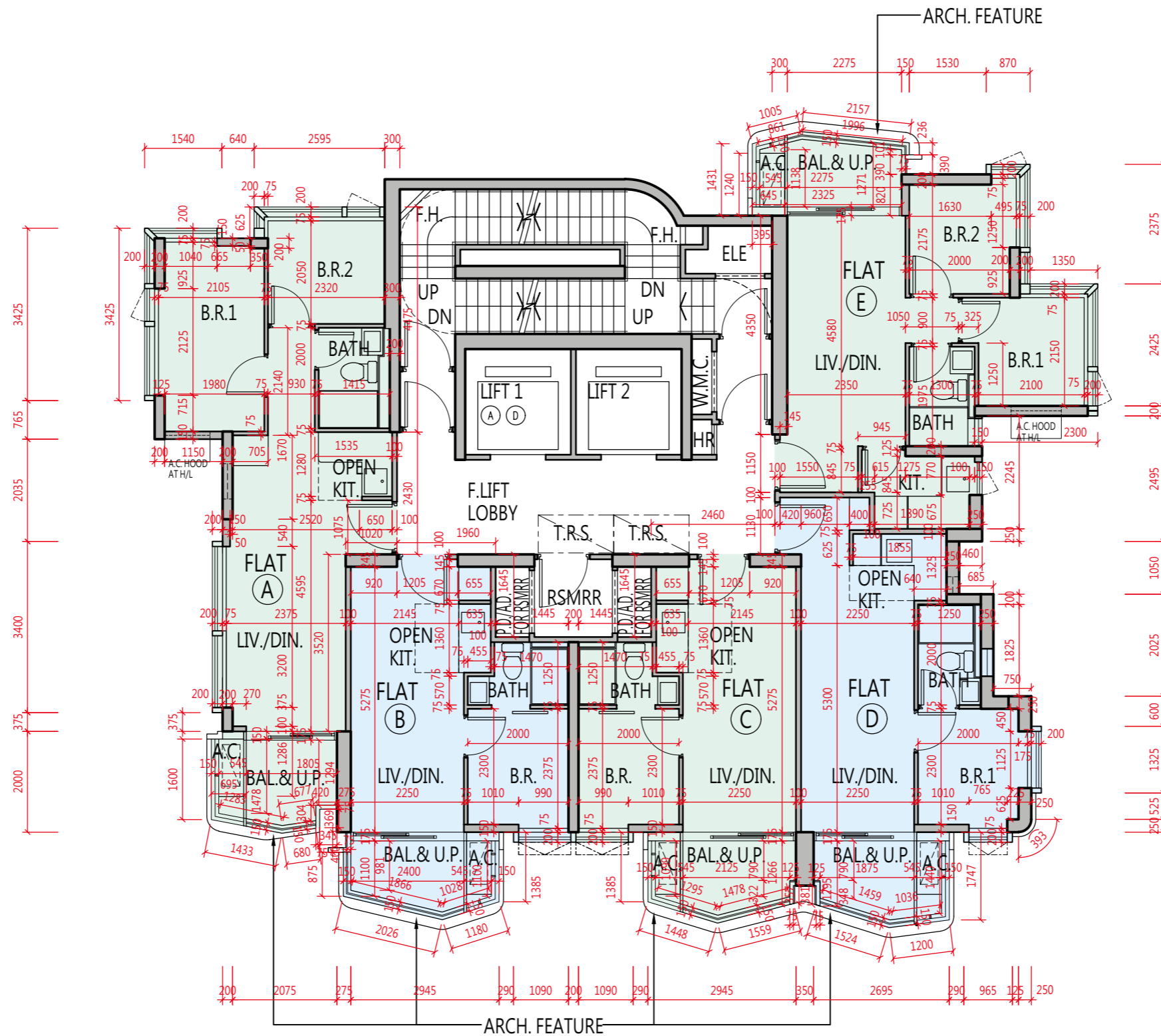
備註：

- 不設4樓、13樓、14樓及24樓。
- 樓面平面圖中顯示之備註、名詞及簡稱，請參閱本售樓說明書第19頁。
- 樓面平面圖所列之尺寸數字為以毫米標示之建築結構尺寸。

11

FLOOR PLANS OF RESIDENTIAL PROPERTIES IN THE DEVELOPMENT 發展項目的住宅物業的樓面平面圖

28/F
28樓



SCALE 比例



11

FLOOR PLANS OF RESIDENTIAL PROPERTIES IN THE DEVELOPMENT 發展項目的住宅物業的樓面平面圖

Description 描述	Floor 樓層	Flat 單位				
		A	B	C	D	E
Thickness of floor slab (excluding plaster) of each residential property (mm) 每個住宅物業的樓板（不包括灰泥）的厚度（毫米）	28/F 28樓	150, 180	150, 180	150, 180	150	150, 200
The floor-to-floor height (refers to the height between the top surface of the structural slab of a floor and the top surface of the structural slab of its immediate upper floor) of each residential property (mm) 每個住宅物業的層與層之間的高度（指該樓層之石屎地台面與上一層石屎地台面之高度距離）（毫米）		3050, 3100, 3370, 3400	3100, 3370, 3400	3400	3100, 3370, 3400	3100, 3250

The internal areas on the residential properties on the upper floors will generally be slightly larger than on the lower floors because of the reducing thickness of the structural walls on the upper floors.

Notes:

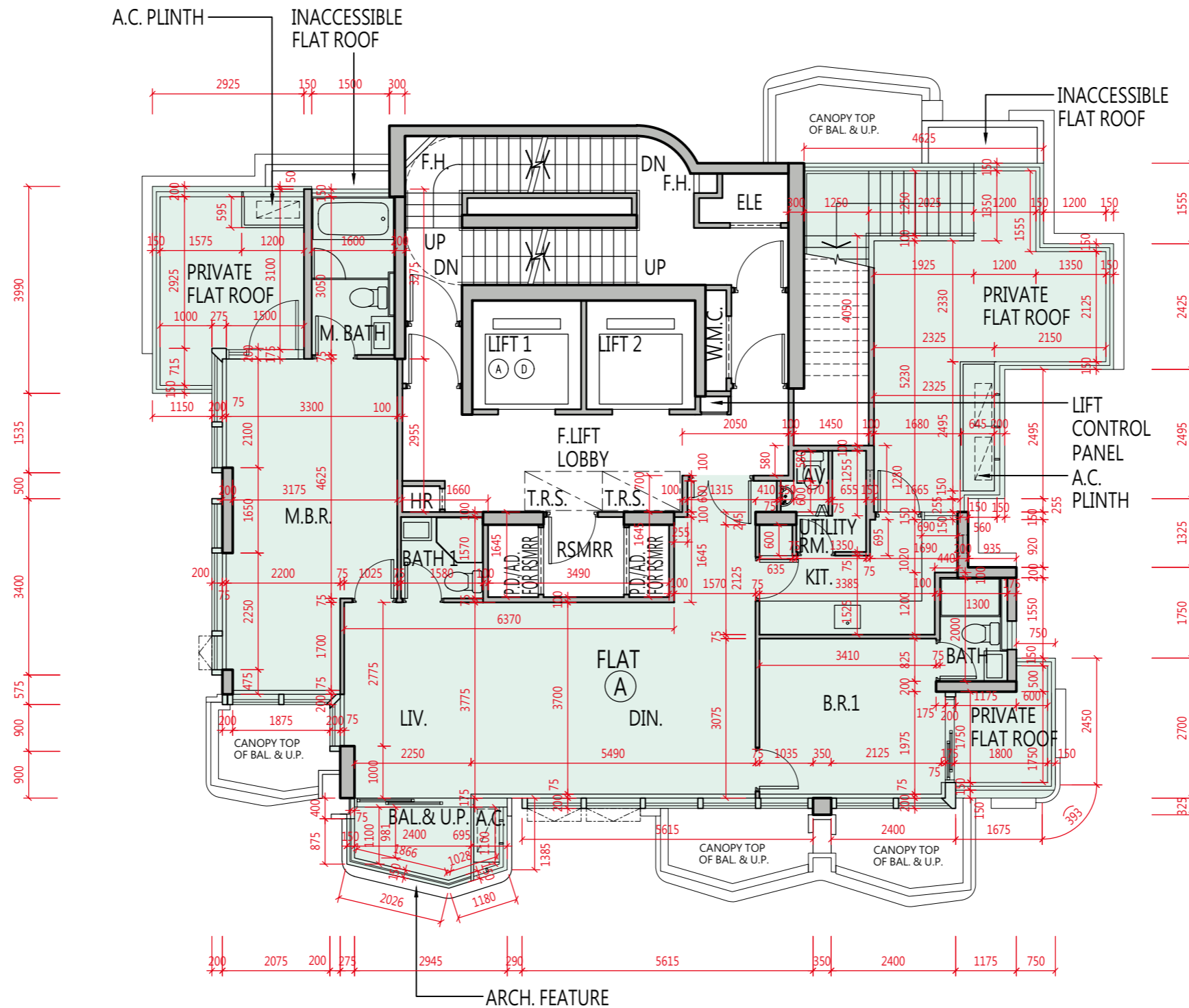
- 4/F, 13/F, 14/F and 24/F are omitted.
- Please refer to page 19 of this sales brochure for notes, legend of the terms and abbreviations shown in the floor plans.
- The dimensions of the floor plans are all structural dimensions in millimeter.

因住宅物業的較高樓層的結構牆的厚度遞減，較高樓層的內部面積，一般比較低樓層的內部面積稍大。

備註：

- 不設4樓、13樓、14樓及24樓。
- 樓面平面圖中顯示之備註、名詞及簡稱，請參閱本售樓說明書第19頁。
- 樓面平面圖所列之尺寸數字為以毫米標示之建築結構尺寸。

29/F
29樓



SCALE 比例
0 5M/米

11

FLOOR PLANS OF RESIDENTIAL PROPERTIES IN THE DEVELOPMENT 發展項目的住宅物業的樓面平面圖

Description 描述	Floor 樓層	Flat 單位
		A
Thickness of floor slab (excluding plaster) of each residential property (mm) 每個住宅物業的樓板（不包括灰泥）的厚度（毫米）	29/F 29樓	150, 180, 250
The floor-to-floor height (refers to the height between the top surface of the structural slab of a floor and the top surface of the structural slab of its immediate upper floor) of each residential property (mm) 每個住宅物業的層與層之間的高度（指該樓層之石屎地台面與上一層石屎地台面之高度距離）（毫米）		3600, 3800, 3850

The internal areas on the residential properties on the upper floors will generally be slightly larger than on the lower floors because of the reducing thickness of the structural walls on the upper floors.

Notes:

1. 4/F, 13/F, 14/F and 24/F are omitted.
2. Please refer to page 19 of this sales brochure for notes, legend of the terms and abbreviations shown in the floor plans.
3. The dimensions of the floor plans are all structural dimensions in millimeter.

因住宅物業的較高樓層的結構牆的厚度遞減，較高樓層的內部面積，一般比較低樓層的內部面積稍大。

備註：

1. 不設4樓、13樓、14樓及24樓。
2. 樓面平面圖中顯示之備註、名詞及簡稱，請參閱本售樓說明書第19頁。
3. 樓面平面圖所列之尺寸數字為以毫米標示之建築結構尺寸。

11

FLOOR PLANS OF RESIDENTIAL PROPERTIES IN THE DEVELOPMENT 發展項目的住宅物業的樓面平面圖

Description 描述	Floor 樓層	Flat 單位
		A
Thickness of floor slab (excluding plaster) of each residential property (mm) 每個住宅物業的樓板（不包括灰泥）的厚度（毫米）	Roof 天台	Not applicable 不適用
The floor-to-floor height (refers to the height between the top surface of the structural slab of a floor and the top surface of the structural slab of its immediate upper floor) of each residential property (mm) 每個住宅物業的層與層之間的高度（指該樓層之石屎地台面與上一層石屎地台面之高度距離）（毫米）		Not applicable 不適用

The internal areas on the residential properties on the upper floors will generally be slightly larger than on the lower floors because of the reducing thickness of the structural walls on the upper floors.

Notes:

- 4/F, 13/F, 14/F and 24/F are omitted.
- Please refer to page 19 of this sales brochure for notes, legend of the terms and abbreviations shown in the floor plans.
- The dimensions of the floor plans are all structural dimensions in millimeter.

因住宅物業的較高樓層的結構牆的厚度遞減，較高樓層的內部面積，一般比較低樓層的內部面積稍大。

備註：

- 不設4樓、13樓、14樓及24樓。
- 樓面平面圖中顯示之備註、名詞及簡稱，請參閱本售樓說明書第19頁。
- 樓面平面圖所列之尺寸數字為以毫米標示之建築結構尺寸。