

## 樓面平面圖中所使用名詞及簡稱之圖例 Legend of terms and abbreviations used on Floor Plan

42/F BUILDING LINE ABOVE AT 41/F ONLY	= 42/F BUILDING LINE ABOVE AT 41/F ONLY	= 42樓上層建築線只設於41樓
ACOUSTIC WIN. (___/F - ___/F)	= ACOUSTIC WINDOW (___/F - ___/F)	= 減音窗戶( ___樓 - ___樓)
A.C.P.	= AIR CONDITIONER PLATFORM	= 冷氣機平台
A/C HOOD	= AIR CONDITIONER HOOD	= 冷氣機遮簷
A/C HOOD ABOVE	= AIR CONDITIONER HOOD ABOVE	= 上層冷氣機遮簷
A/C UNIT	= AIR CONDITIONER UNIT	= 冷氣機
A.F. ABOVE	= ARCHITECTURAL FEATURE ABOVE	= 上層建築裝飾
BAL.	= BALCONY	= 露台
BAL./U.P./A.C.P.	= BALCONY/UTILITY PLATFORM/AIR CONDITIONER PLATFORM	= 露台/工作平台/冷氣機平台
BAL./U.P./A.C.P. ABOVE	= BALCONY/UTILITY PLATFORM/AIR CONDITIONER PLATFORM ABOVE	= 上層露台/工作平台/冷氣機平台位置
BATH	= BATHROOM	= 浴室
BATH 1	= BATHROOM 1	= 浴室 1
BATH 2	= BATHROOM 2	= 浴室 2
BED RM. 1	= BEDROOM 1	= 睡房 1
BED RM. 2	= BEDROOM 2	= 睡房 2
BED RM. 3	= BEDROOM 3	= 睡房 3
COMMON AREA	= COMMON AREA	= 公用地方
COMMON CORRIDOR	= COMMON CORRIDOR	= 公用走廊
COMMON LAWN (REFUGE FLOOR)	= COMMON LAWN (REFUGE FLOOR)	= 公用草地(庇護層)
CORRIDOR	= CORRIDOR	= 走廊
COVER OF A/C HOOD BELOW	= COVER OF AIR CONDITIONER HOOD BELOW	= 下層冷氣機遮簷位置上蓋
COVER OF BAL./U.P./A.C.P.	= COVER OF BALCONY/UTILITY PLATFORM/AIR CONDITIONER PLATFORM	= 露台/工作平台/冷氣機平台上蓋
DIN.	= DINING ROOM	= 飯廳
DOG HOUSE BELOW	= DOG HOUSE BELOW	= 下層室外管道房
ELECT. DUCT	= ELECTRICAL DUCT	= 電線槽
ELECT. METER RM.	= ELECTRICAL METER ROOM	= 電錶房
ELV. RM.	= EXTRA-LOW VOLTAGE ROOM	= 特低電壓電線房
ENTERTAINMENT RM.	= ENTERTAINMENT ROOM	= 娛樂室
FIREMAN LIFT LOBBY	= FIREMAN LIFT LOBBY	= 消防升降機大堂
FIXED WINDOW (WITH OR WITHOUT MAINTENANCE WINDOW)	= FIXED WINDOW (WITH OR WITHOUT MAINTENANCE WINDOW)	= 固定窗(配有或沒有維修窗)
FLAT ROOF	= FLAT ROOF	= 平台
FLAT ROOF BELOW	= FLAT ROOF BELOW	= 下層平台
FLUSHING WATER PUMP RM.	= FLUSHING WATER PUMP ROOM	= 沖廁水水泵房
FLUSHING WATER TANK	= FLUSHING WATER TANK	= 沖廁水水箱
FLUSHING WATER TANK & PUMP RM.	= FLUSHING WATER TANK & PUMP ROOM	= 沖廁水水箱及泵房
FOYER	= FOYER	= 前廳
F.H.	= FIRE HYDRANT	= 消防柱
H.R.	= HOSE REEL	= 消防喉轆
H.R. AT H/L	= HOSE REEL AT HIGH LEVEL	= 消防喉轆設於高位
INACCESSIBLE COMMON FLAT ROOF	= INACCESSIBLE COMMON FLAT ROOF	= 非開放公用平台
INACCESSIBLE COMMON FLAT ROOF (AT 9/F ONLY)	= INACCESSIBLE COMMON FLAT ROOF (AT 9/F ONLY)	= 非開放公用平台設於9樓
INACCESSIBLE COMMON LAWN	= INACCESSIBLE COMMON LAWN	= 非開放公用草坪
INACCESSIBLE COMMON ROOF	= INACCESSIBLE COMMON ROOF	= 非開放公用天台
INACCESSIBLE COMMON ROOF BELOW	= INACCESSIBLE COMMON ROOF BELOW	= 下層非開放公用天台
KIT.	= KITCHEN	= 廚房
LAV.	= LAVATORY	= 洗手間

## 樓面平面圖中所使用名詞及簡稱之圖例 Legend of terms and abbreviations used on Floor Plan

LIFT	= LIFT	= 升降機
LIFT LOBBY	= LIFT LOBBY	= 升降機大堂
LIFT OVER-RUN	= LIFT OVERRUN	= 升降機槽(頂部)
LIFT MACHINE ROOM	= LIFT MACHINE ROOM	= 升降機機房
LIV.	= LIVING ROOM	= 客廳
METAL A.F.	= METAL ARCHITECTURAL FEATURE	= 金屬建築裝飾
METAL A.F. ABOVE	= METAL ARCHITECTURAL FEATURE ABOVE	= 上層金屬建築裝飾
M. BATH	= MASTER BATHROOM	= 主人浴室
M. BED RM.	= MASTER BEDROOM	= 主人睡房
M.L. AT H/L	= METAL LOUVRE AT HIGH LEVEL	= 金屬百葉設在高位
M.L. W/. WIND GUARD (FOR 9/F & 28/F ONLY)	= METAL LOUVRE WITH WIND GUARD (FOR 9/F AND 28/F ONLY)	= 金屬百葉配防風裝置(只設於9樓及28樓)
OPEN FILTRATION PLANT PIT	= OPEN FILTRATION PLANT PIT	= 開放式過濾機房
PRIVATE LIFT LOBBY	= PRIVATE LIFT LOBBY	= 私人升降機大堂
POTABLE WATER TANK	= POTABLE WATER TANK	= 食水水缸
POTABLE WATER TANK ROOM	= POTABLE WATER TANK ROOM	= 食水水缸房
POTABLE WATER TANK & PUMP RM.	= POTABLE WATER TANK AND PUMP ROOM	= 食水水缸及泵房
P.D.	= PIPE DUCT	= 管道
ROOF	= ROOF	= 天台
R.C. A.F.	= REINFORCED CONCRETE ARCHITECTURAL FEATURE	= 鋼筋混凝土建築裝飾
R.S. & M.R.	= REFUSE STORAGE AND MATERIAL RECOVERY ROOM	= 垃圾及物料回收室
SINK	= SINK	= 洗滌盆
STORE	= STORE ROOM	= 儲物室
SWIMMING POOL	= SWIMMING POOL	= 游泳池
T1A	= TOWER 1 (1A)	= 第1座 (1A)
T1B	= TOWER 1 (1B)	= 第1座 (1B)
T.R.S.	= TEMPORARY REFUGE SPACE	= 臨時庇護處
UP	= UP	= 上
UTILITY	= UTILITY ROOM	= 工作間
U.P.	= UTILITY PLATFORM	= 工作平台
WALK-IN CLOSET	= WALK-IN CLOSET	= 衣帽間
WATER METER CABINET	= WATER METER CABINET	= 水錶櫃

適用於本節各樓面平面圖之備註：

1. 部分樓層外牆設有建築裝飾及/或外露喉管/管道。詳細資料請參考最新經批准的建築圖則及其他相關圖則。
2. 部分住宅物業的露台及/或平台及/或工作平台及/或冷氣機平台及/或外牆上/附近設有外露及/或內藏於外牆覆蓋板的公用喉管及/或機電設備。詳細資料請參考最新經批准的建築圖則及/或排水設施圖則。
3. 部分住宅物業的客廳/飯廳、睡房、儲物室、工作間、廚房、浴室、洗手間、前廳及/或走廊之天花可能設有假天花及/或跌級樓板用以裝置冷氣系統及/或其他機電設備。
4. 樓面平面圖上所顯示的裝置及設備符號，例如浴缸、淋浴間、洗滌盆、坐廁、花灑、洗滌盆櫃等乃摘錄自最新經批准的建築圖則的建築符號，只作一般性標誌，而非展示其實際大小、設計及形狀。
5. 露台、工作平台及冷氣機平台為不可封閉的地方。
6. 住宅物業有非結構預製外牆及/或幕牆。住宅物業之實用面積之計算包括非結構預製外牆及幕牆之面積，並由非結構預製外牆及幕牆之外圍起計。
7. 在期數管理人安排大廈外牆之必要維修進行期間，吊船將在期數的住宅物業之窗戶外及平台/天台上方之空間運作。

Notes applicable to the floor plans in this section:

1. There are architectural features and/or exposed pipes/ducts on the external walls of some of the floors. For details, please refer to the latest approved building plans and other relevant plans.
2. Common pipes and/or mechanical and electrical services exposed and/or enclosed in cladding are located at/ adjacent to the balcony and/or flat roof and/or utility platform and/or air-conditioner platform and/or external wall of some residential properties. For details, please refer to the latest approved building plans and/or drainage plans.
3. There are ceiling bulkheads and/or sunken slabs on the ceiling at living room/dining room, bedrooms, store, utility room, kitchen, bathroom, lavatory, foyer and/or corridors of some residential properties for the installation of the air-conditioning system and/or other mechanical and electrical services.
4. Symbols of fittings and fitments shown on the floor plans, such as bathtubs, shower cubicle, sink, water closets, shower, sink counter etc. are architectural symbols retrieved from the latest approved building plans and are for general indication only and are not indications of their actual size, designs and shapes.
5. Balconies, utility platforms and air-conditioner platforms are non-enclosed areas.
6. There are non-structural prefabricated external walls and/or curtain walls in the residential properties. The saleable area of a residential property has included the area of non-structural prefabricated external walls and curtain walls and is measured from the exterior of such non-structural prefabricated external walls and curtain walls.
7. During the necessary maintenance of the external walls of tower arranged by manager of the Phase, gondola will be operating in the airspace outside the window and above flat roof / roof of residential properties of the Phase.

第1座(1A及1B)  
Tower 1 (1A and 1B)

8樓  
8/F

描述 Description		每個住宅物業的層與層之間的高度(指該樓層之石屎地台面與上一層石屎地台面之高度距離)(毫米) The floor-to-floor height (refers to the height between the top surface of the structural slab of a floor and the top surface of the structural slab of its immediate upper floor) of each residential property (mm)			每個住宅物業的樓板(不包括灰泥)的厚度(毫米) The thickness of the floor slabs (excluding plaster) of each residential property (mm)			
座 Tower	樓層 Floor	單位 Unit	A	B	C	A	B	C
第1座(1A) Tower 1 (1A)	8樓 8/F		2650, 2700, 2750, 2800, 2850, 2900, 3100, 3150, 3200, 3300, 3350, 3400, 3450, 3600, 3650	2750, 2800, 2850, 3100, 3150, 3200, 3250, 3300, 3350, 3600, 3650		150, 280	150	
第1座(1B) Tower 1 (1B)			2800, 2850, 3100, 3150, 3200, 3300, 3350, 3600, 3650	2700, 2750, 2800, 2850, 3100, 3150, 3200, 3300, 3350, 3600, 3650	2800, 2850, 2900, 3100, 3150, 3300, 3350, 3400, 3600, 3650	150	150	150, 200

因住宅物業的較高樓層的結構牆的厚度遞減，較高樓層的內部面積，一般比較低樓層的內部面積稍大。  
(此根據《一手住宅物業銷售條例》附表1第1部第10(2)(e)條規定之陳述並不適用於本期數。)

備註：

- 住宅物業之天花高度將會因應其結構、建築及/或裝修設計上的差異而有所不同。
- 樓面平面圖之尺規所列數字為以毫米標示之建築結構尺寸。
- 請參閱本售樓說明書第20至21頁之圖例以協助閱讀樓面平面圖之名稱和簡稱。
- 有關紓緩噪音措施之詳情，請參閱本售樓說明書的「有關資料」章節。

The internal areas of the residential properties on the upper floors will generally be slightly larger than those on the lower floors because of the reducing thickness of the structural walls on the upper floors.

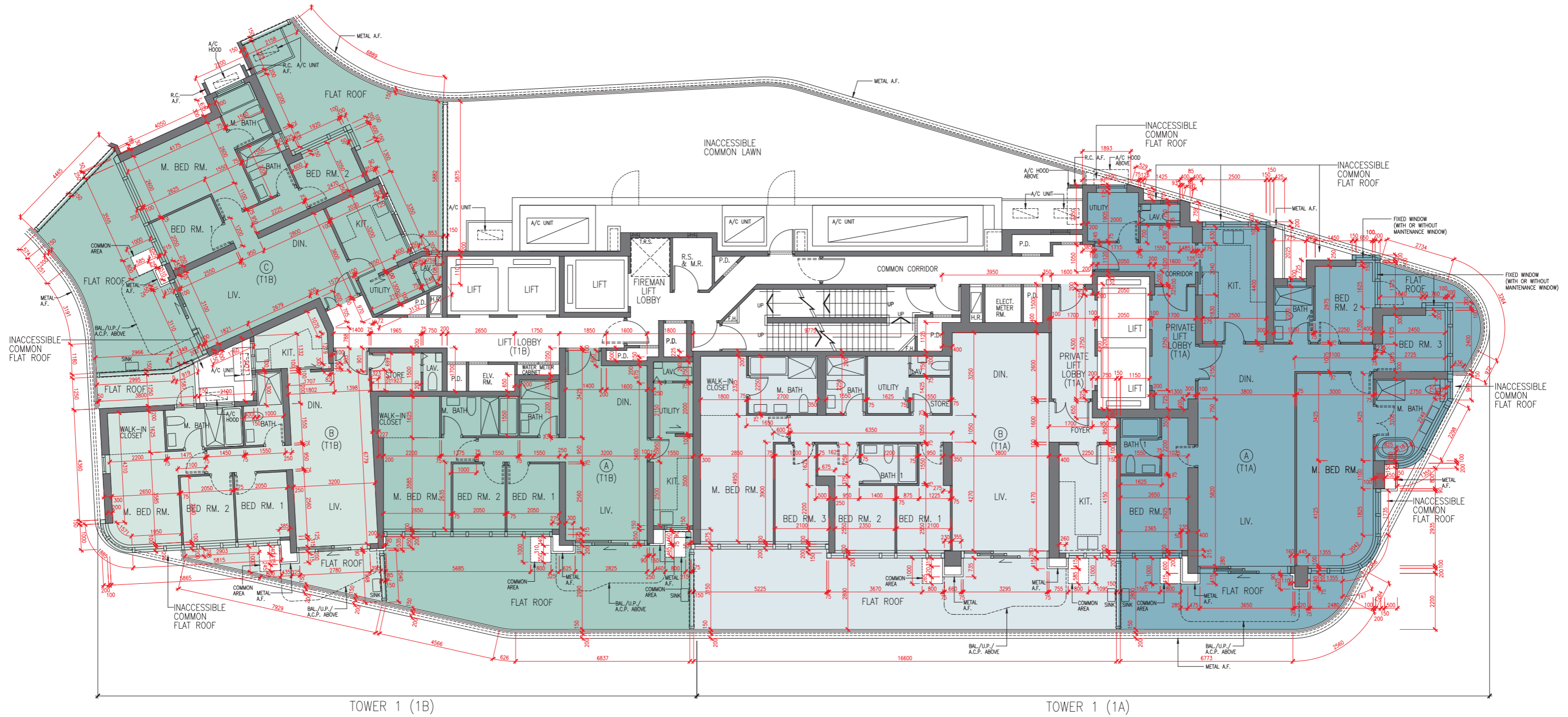
(This statement as required under Section 10(2)(e) of Part 1 of Schedule 1 to the Residential Properties (First-hand Sales) Ordinance is not applicable to the Phase.)

Notes:

- The internal ceiling height within residential properties may vary due to structural, architectural and/or decoration design variations.
- The dimensions in the floor plans are all structural dimensions in millimetre.
- Please refer to pages 20 to 21 of this sales brochure for legend of the terms and abbreviations in studying the floor plans.
- For details of the noise mitigation measures, please refer to the "Relevant Information" section in this sales brochure.

第1座(1A及1B)  
Tower 1 (1A and 1B)

8樓  
8/F



TOWER 1 (1B)

TOWER 1 (1A)

圖例  
Legend

- 第1座(1A)  
Tower 1 (1A)
- 第1座(1B)  
Tower 1 (1B)

第1座(1A及1B)  
Tower 1 (1A and 1B)

9樓至12樓、15樓至23樓、25樓至33樓及35樓至41樓  
9/F-12/F, 15/F-23/F, 25/F-33/F and 35/F-41/F

描述 Description		每個住宅物業的層與層之間的高度(指該樓層之石屎地台面與上一層石屎地台面之高度距離)(毫米) The floor-to-floor height (refers to the height between the top surface of the structural slab of a floor and the top surface of the structural slab of its immediate upper floor) of each residential property (mm)			每個住宅物業的樓板(不包括灰泥)的厚度(毫米) The thickness of the floor slabs (excluding plaster) of each residential property (mm)			
座 Tower	樓層 Floor	單位 Unit	A	B	C	A	B	C
第1座(1A) Tower 1 (1A)	9樓至12樓、15樓至23樓、25樓至28樓 9/F-12/F, 15/F-23/F, 25/F-28/F		3150	3150		150, 280	150	
	29樓至33樓、35樓至40樓 29/F-33/F, 35/F-40/F		3325	3325		150, 280	150	
	41樓 41/F		2950, 3105, 3155, 3180, 3230, 3380, 3405, 3450, 3480, 3500, 3530, 3550, 3750, 3800, 3850, 3900, 3950, 4000	3100, 3150, 3200, 3250, 3400, 3450, 3500, 3525, 3550, 3600, 3750, 3800, 3850, 3900		150, 200	150, 175	
第1座(1B) Tower 1 (1B)	9樓至12樓、15樓至23樓、25樓至28樓 9/F-12/F, 15/F-23/F, 25/F-28/F		3150	3150	3150	150	150	150
	29樓至33樓、35樓至40樓 29/F-33/F, 35/F-40/F		3325	3325	3325	150	150	150
	41樓 41/F		3500	3500	3500	150	150	150

因住宅物業的較高樓層的結構牆的厚度遞減，較高樓層的內部面積，一般比較低樓層的內部面積稍大。

(此根據《一手住宅物業銷售條例》附表1第1部第10(2)(e)條規定之陳述並不適用於本期數。)

備註：

- 住宅物業之天花高度將會因應其結構、建築及/或裝修設計上的差異而有所不同。
- 樓面平面圖之尺規所列數字為以毫米標示之建築結構尺寸。
- 請參閱本售樓說明書第20至21頁之圖例以協助閱讀樓面平面圖之名稱和簡稱。
- 不設13樓、14樓、24樓及34樓。
- 有關紓緩噪音措施之詳情，請參閱本售樓說明書的「有關資料」章節。

The internal areas of the residential properties on the upper floors will generally be slightly larger than those on the lower floors because of the reducing thickness of the structural walls on the upper floors.

(This statement as required under Section 10(2)(e) of Part 1 of Schedule 1 to the Residential Properties (First-hand Sales) Ordinance is not applicable to the Phase.)

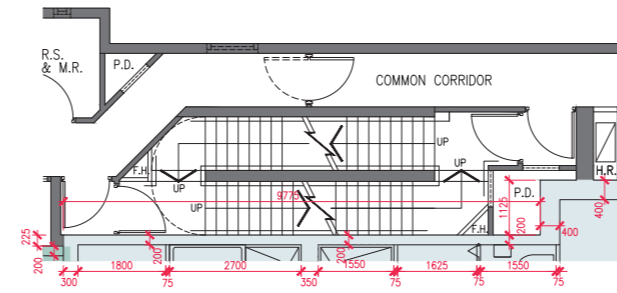
Notes:

- The internal ceiling height within residential properties may vary due to structural, architectural and/or decoration design variations.
- The dimensions in the floor plans are all structural dimensions in millimetre.
- Please refer to pages 20 to 21 of this sales brochure for legend of the terms and abbreviations in studying the floor plans.
- 13/F, 14/F, 24/F and 34/F are omitted.
- For details of the noise mitigation measures, please refer to the "Relevant Information" section in this sales brochure.

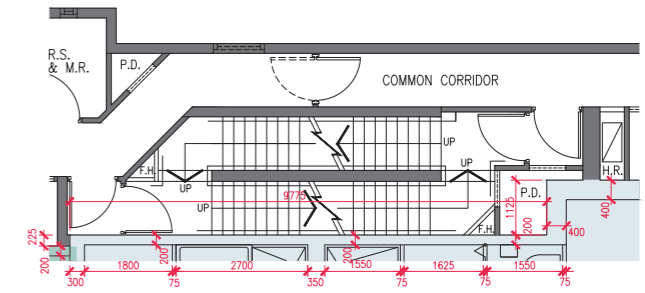
第1座(1A及1B)  
Tower 1 (1A and 1B)

9樓至12樓、15樓至23樓、25樓至33樓及35樓至41樓  
9/F-12/F, 15/F-23/F, 25/F-33/F and 35/F-41/F

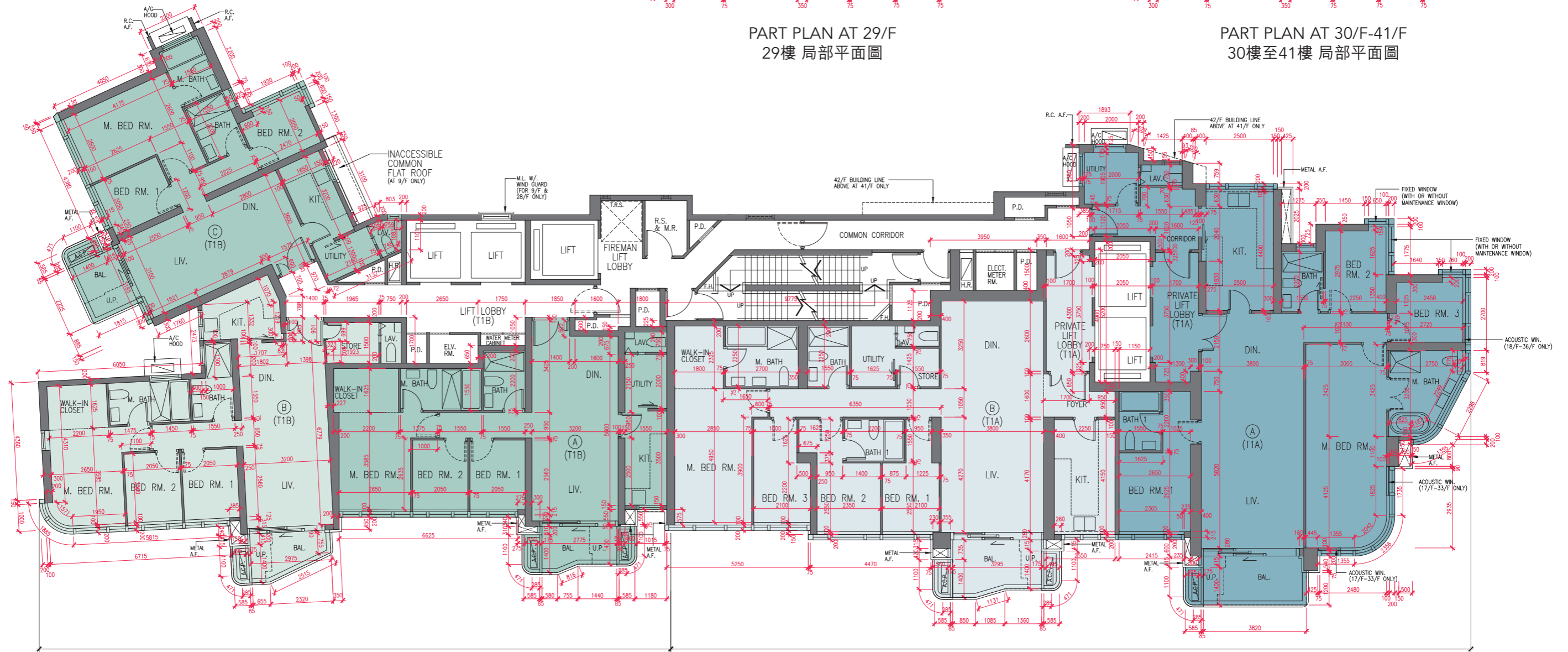
比例: 0 5米(M)  
Scale: 



PART PLAN AT 29/F  
29樓局部平面圖





PART PLAN AT 30/F-41/F  
30樓至41樓局部平面圖



TOWER 1 (1B)

TOWER 1 (1A)

圖例  
Legend

-  第1座(1A)  
Tower 1 (1A)
-  第1座(1B)  
Tower 1 (1B)

第1座(1A及1B)  
Tower 1 (1A and 1B)

42樓  
42/F

描述 Description		每個住宅物業的層與層之間的高度(指該樓層之石屎地台面與上一層石屎地台面之高度距離)(毫米) The floor-to-floor height (refers to the height between the top surface of the structural slab of a floor and the top surface of the structural slab of its immediate upper floor) of each residential property (mm)			每個住宅物業的樓板(不包括灰泥)的厚度(毫米) The thickness of the floor slabs (excluding plaster) of each residential property (mm)			
座 Tower	樓層 Floor	單位 Unit	A	B	C	A	B	C
第1座(1A) Tower 1 (1A)	42樓 42/F		3100, 3500, 3525, 3550, 3650, 3800, 3850, 3900, 4050, 4200			150, 175, 200		
第1座(1B) Tower 1 (1B)			3500, 3525, 3550, 3800, 3850, 3900, 4250	3500, 3525, 3550, 3800, 3850, 3900, 3950	3500, 3525, 3550, 3800, 3850	150, 175, 200	175, 200	175, 200

因住宅物業的較高樓層的結構牆的厚度遞減，較高樓層的內部面積，一般比較低樓層的內部面積稍大。

(此根據《一手住宅物業銷售條例》附表1第1部第10(2)(e)條規定之陳述並不適用於本期數。)

備註：

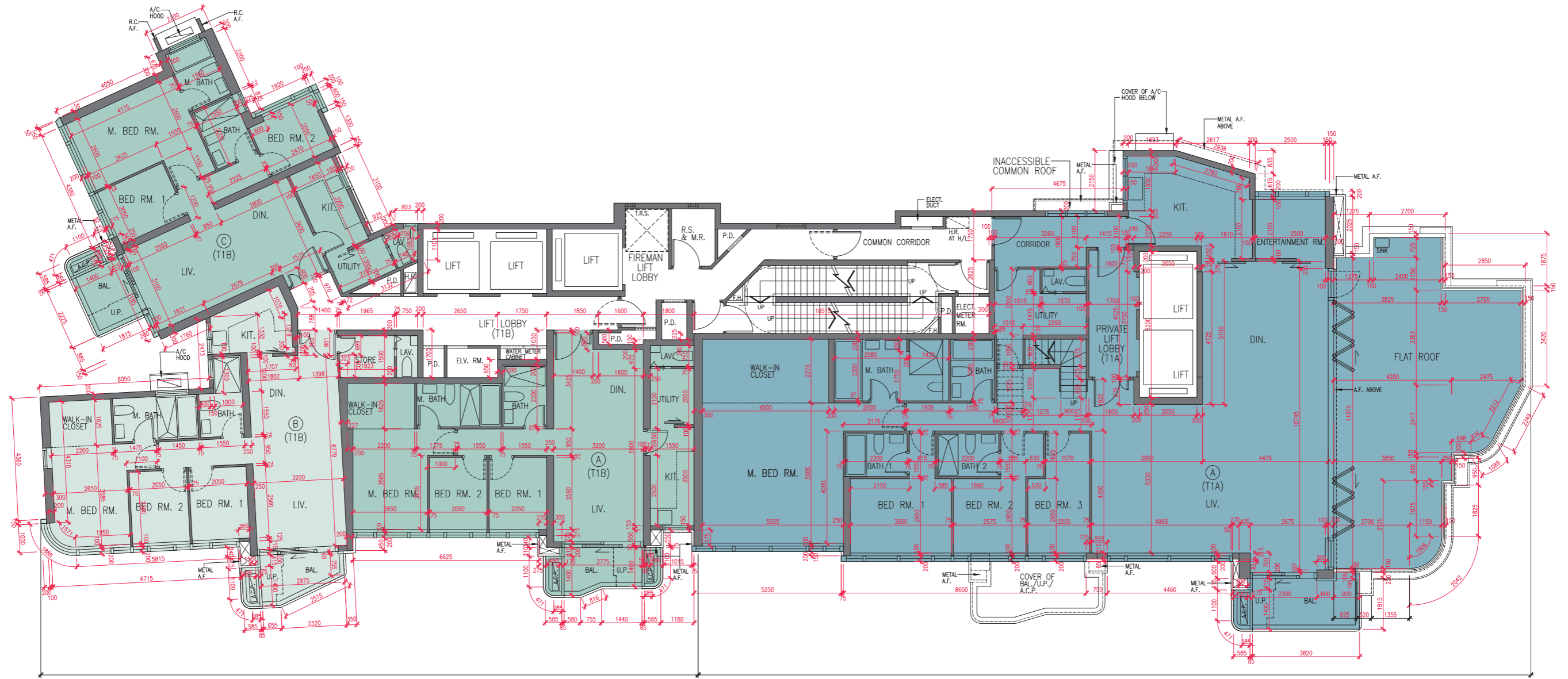
- 住宅物業之天花高度將會因應其結構、建築及/或裝修設計上的差異而有所不同。
- 樓面平面圖之尺規所列數字為以毫米標示之建築結構尺寸。
- 請參閱本售樓說明書第20至21頁之圖例以協助閱讀樓面平面圖之名稱和簡稱。
- 有關紓緩噪音措施之詳情，請參閱本售樓說明書的「有關資料」章節。

The internal areas of the residential properties on the upper floors will generally be slightly larger than those on the lower floors because of the reducing thickness of the structural walls on the upper floors.

(This statement as required under Section 10(2)(e) of Part 1 of Schedule 1 to the Residential Properties (First-hand Sales) Ordinance is not applicable to the Phase.)

Notes:

- The internal ceiling height within residential properties may vary due to structural, architectural and/or decoration design variations.
- The dimensions in the floor plans are all structural dimensions in millimetre.
- Please refer to pages 20 to 21 of this sales brochure for legend of the terms and abbreviations in studying the floor plans.
- For details of the noise mitigation measures, please refer to the "Relevant Information" section in this sales brochure.



TOWER 1 (1B)

TOWER 1 (1A)

圖例  
Legend

- 第1座(1A)  
Tower 1 (1A)
- 第1座(1B)  
Tower 1 (1B)

第1座(1A及1B)  
Tower 1 (1A and 1B)

天台  
Roof

描述 Description		每個住宅物業的層與層之間的高度(指該樓層之石屎地台面與上一層石屎地台面之高度距離)(毫米) The floor-to-floor height (refers to the height between the top surface of the structural slab of a floor and the top surface of the structural slab of its immediate upper floor) of each residential property (mm)			每個住宅物業的樓板(不包括灰泥)的厚度(毫米) The thickness of the floor slabs (excluding plaster) of each residential property (mm)			
座 Tower	樓層 Floor	單位 Unit	A	B	C	A	B	C
第1座(1A) Tower 1 (1A)	天台 Roof		3050			200		
第1座(1B) Tower 1 (1B)								

因住宅物業的較高樓層的結構牆的厚度遞減，較高樓層的內部面積，一般比較低樓層的內部面積稍大。

(此根據《一手住宅物業銷售條例》附表1 第1部第10(2)(e)條規定之陳述並不適用於本期數。)

備註：

- 住宅物業之天花高度將會因應其結構、建築及/或裝修設計上的差異而有所不同。
- 樓面平面圖之尺規所列數字為以毫米標示之建築結構尺寸。
- 請參閱本售樓說明書第20至21頁之圖例以協助閱讀樓面平面圖之名稱和簡稱。
- 有關紓緩噪音措施之詳情，請參閱本售樓說明書的「有關資料」章節。

The internal areas of the residential properties on the upper floors will generally be slightly larger than those on the lower floors because of the reducing thickness of the structural walls on the upper floors.

(This statement as required under Section 10(2)(e) of Part 1 of Schedule 1 to the Residential Properties (First-hand Sales) Ordinance is not applicable to the Phase.)

Notes:

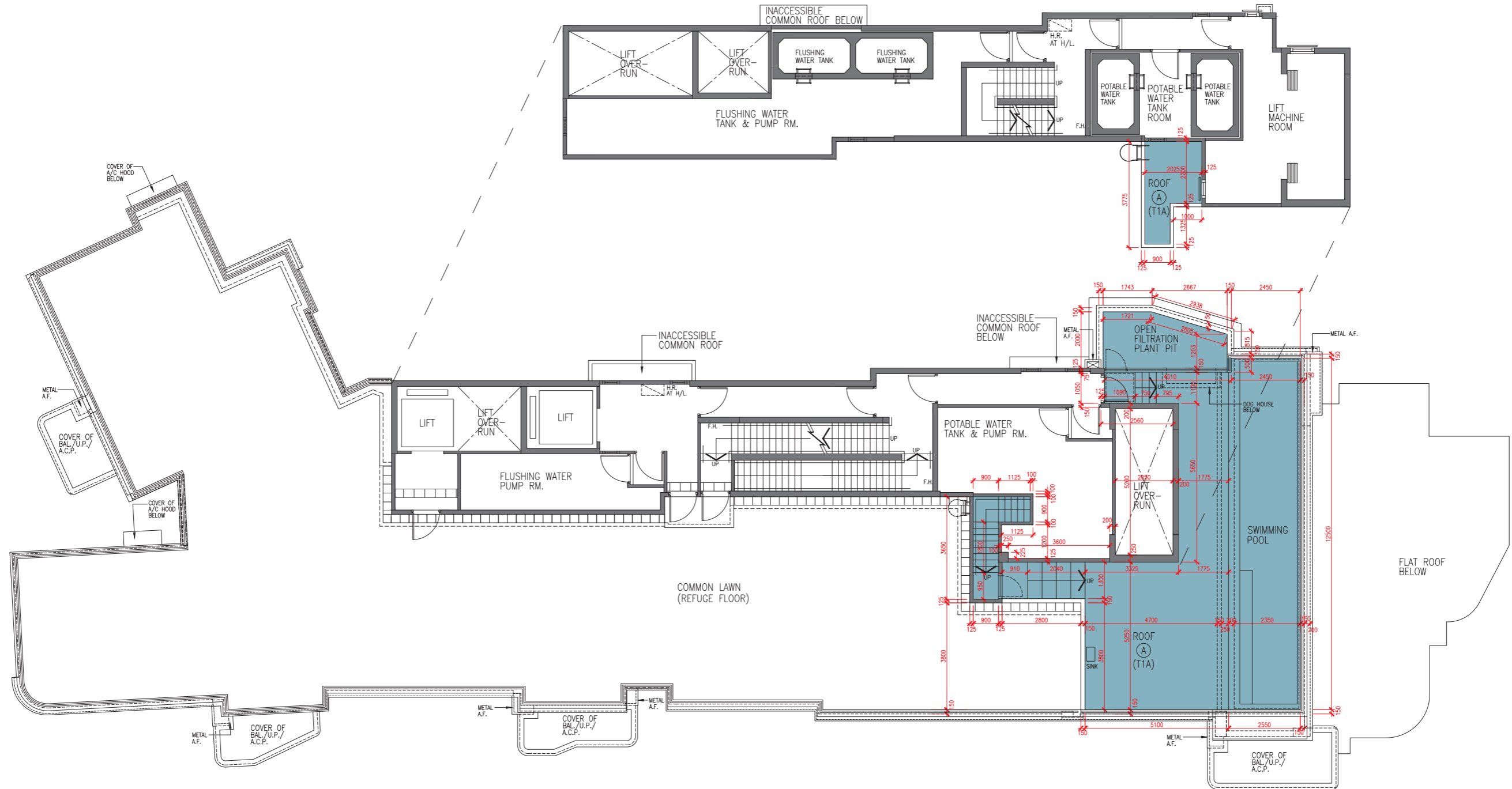
- The internal ceiling height within residential properties may vary due to structural, architectural and/or decoration design variations.
- The dimensions in the floor plans are all structural dimensions in millimetre.
- Please refer to pages 20 to 21 of this sales brochure for legend of the terms and abbreviations in studying the floor plans.
- For details of the noise mitigation measures, please refer to the "Relevant Information" section in this sales brochure.

第1座 (1A及1B)  
Tower 1 (1A and 1B)

天台  
Roof



第1座 (1A) A單位上層天台1  
UNIT A OF TOWER 1 (1A) UPPER ROOF 1



圖例  
Legend

- 第1座(1A)  
Tower 1 (1A)