

# 11 FLOOR PLANS OF RESIDENTIAL PROPERTIES IN THE DEVELOPMENT

## 發展項目的住宅物業的樓面平面圖

The remarks and legends on this page apply to all pages of "Floor plans of residential properties in the Development".

在本頁上之備註和圖例適用於全部的「發展項目的住宅物業的樓面平面圖」頁數。

### Legends of the Floor Plans

#### 樓面平面圖圖例

A/C GRILLE	= Air-Conditioner Grille	= 空調機格柵	BEDROOM 1	= Bedroom 1	= 睡房1
A/C PLANT ROOM	= Air-Conditioning Plant Room	= 空調機房	BEDROOM 2	= Bedroom 2	= 睡房2
A/C PLANT ROOM (FOR UNIT A & UNIT B)	= Air-Conditioning Plant Room (For Unit A and Unit B)	= 空調機房 (A單位及B單位)	BUILDING LINE ABOVE (15/F)	= Building Line Above (15/F)	= 上層建築物邊緣(15樓)
A/C PLANT ROOM (FOR 31/F UNIT A)	= Air-Conditioning Plant Room (For 31/F Unit A)	= 空調機房 (31樓A單位)	BUILDING LINE ABOVE (25/F)	= Building Line Above (25/F)	= 上層建築物邊緣(25樓)
A/C PLANT ROOM (FOR 32/F UNIT A)	= Air-Conditioning Plant Room (For 32/F Unit A)	= 空調機房 (32樓A單位)	COMMON AREA	= Common Area	= 公用範圍
A/C PLATFORM	= Air-Conditioner Platform	= 空調機平台	CONCRETE PLINTH	= Concrete Plinth	= 混凝土基座
AF	= Architectural Feature	= 建築裝飾	CW	= Curtain Wall	= 玻璃幕牆
AF AT 3/F	= Architectural Feature At 3/F	= 3樓之建築裝飾	DINING ROOM	= Dining Room	= 飯廳
AF (AT 5/F, 7/F, 9/F & 11/F)	= Architectural Feature (At 5/F, 7/F, 9/F and 11/F)	= 建築裝飾 (於5樓、7樓、9樓及11樓)	DN	= Down	= 落
AF (AT 15/F)	= Architectural Feature (At 15/F)	= 建築裝飾(於15樓)	ELV	= Extra Low Voltage Cable Duct	= 特低壓電線槽
AF (AT 16/F ONLY)	= Architectural Feature (At 16/F Only)	= 建築裝飾 (僅於16樓)	EMC	= Electric Meter Cabinet	= 電錶櫃
AF (AT 15/F, 17/F & 19/F)	= Architectural Feature (At 15/F, 17/F and 19/F)	= 建築裝飾 (於15樓、17樓及19樓)	FRESH AND FLUSHING WATER PUMP ROOM	= Fresh and Flushing Water Pump Room	= 食水及沖廁水泵房
AF (AT 18/F)	= Architectural Feature (At 18/F)	= 建築裝飾(於18樓)	FRESH WATER TANK & PUMP ROOM	= Fresh Water Tank and Pump Room	= 食水水缸及泵房
AF (AT 21/F)	= Architectural Feature (At 21/F)	= 建築裝飾(於21樓)	GLASS PANEL	= Glass Panel	= 玻璃板
AF (AT 26/F, 28/F & 30/F)	= Architectural Feature (AT 26/F, 28/F and 30/F)	= 建築裝飾 (於26樓、28樓及30樓)	HR	= Hose Reel	= 消防喉轆
AF (AT 28/F - 30/F)	= Architectural Feature (At 28/F - 30/F)	= 建築裝飾 (於28樓至30樓)	INACCESSIBLE FLAT ROOF (AT 3/F ONLY)	= Inaccessible Flat Roof (At 3/F Only)	= 不可到達的平台 (僅於3樓)
AF (28/F ONLY)	= Architectural Feature (28/F Only)	= 建築裝飾 (僅於28樓)	JUNIOR SUITE	= Junior Suite	= 套房
BALCONY	= Balcony	= 露台	JUNIOR SUITE 1	= Junior Suite 1	= 套房 1
BALCONY & UTILITY PLATFORM ABOVE (3/F)	= Balcony and Utility Platform Above (3/F)	= 上層露台及工作平台 (3樓)	JUNIOR SUITE 2	= Junior Suite 2	= 套房 2
BATHROOM	= Bathroom	= 浴室	JUNIOR SUITE 3	= Junior Suite 3	= 套房 3
BEDROOM	= Bedroom	= 睡房	JUNIOR SUITE BATHROOM	= Junior Suite Bathroom	= 套房浴室
			JUNIOR SUITE BATHROOM 1	= Junior Suite Bathroom 1	= 套房浴室 1
			JUNIOR SUITE BATHROOM 2	= Junior Suite Bathroom 2	= 套房浴室 2
			JUNIOR SUITE BATHROOM 3	= Junior Suite Bathroom 3	= 套房浴室 3
			KITCHEN	= Kitchen	= 廚房
			LAVATORY	= Lavatory	= 洗手間
			LIFT	= Lift	= 升降機

# 11 FLOOR PLANS OF RESIDENTIAL PROPERTIES IN THE DEVELOPMENT

## 發展項目的住宅物業的樓面平面圖

The remarks and legends on this page apply to all pages of "Floor plans of residential properties in the Development".

在本頁上之備註和圖例適用於全部的「發展項目的住宅物業的樓面平面圖」頁數。

### Legends of the Floor Plans

#### 樓面平面圖圖例

LIFT LOBBY	= Lift Lobby	= 升降機大堂	ROOF	= Roof	= 天台
LIFT SHAFT	= Lift Shaft	= 升降機槽	ROOF (COMMON REFUGE ROOF)	= Roof (Common Refuge Roof)	= 天台(公用庇護天台)
LIVING ROOM	= Living Room	= 客廳	RSMRR	= Refuse Storage And Material Recovery Room	= 垃圾及物料回收房
LIVING & DINING ROOM	= Living Room and Dining Room	= 客廳及飯廳	R.C. WALL	= Reinforced Concrete Wall	= 鋼筋混凝土牆
MASTER BATHROOM	= Master Bathroom	= 主人浴室	STORE ROOM	= Store Room	= 儲物房
MASTER ENSUITE	= Master Ensuite	= 主人套房	UP	= Up	= 上
OPEN KITCHEN	= Open Kitchen	= 開放式廚房	UTILITY PLATFORM	= Utility Platform	= 工作平台
PD	= Pipe Duct	= 管槽	UTILITY ROOM	= Utility Room	= 工作間
POWDER ROOM	= Powder Room	= 化妝間	VOID	= Void	= 中空
PRIVATE FLAT ROOF	= Private Flat Roof	= 私人平台	WALK-IN CLOSET	= Walk-in Closet	= 衣帽間
PRIVATE ROOF	= Private Roof	= 私人天台	WALK-IN CLOSET/STORE ROOM	= Walk-in Closet/Store Room	= 衣帽間/儲物房
RC COVER FOR BALCONY & UTILITY PLATFORM BELOW	= Reinforced Concrete Cover for Balcony and Utility Platform Below	= 露台及工作平台鋼筋混凝土上蓋置下	WMC	= Water Meter Cabinet	= 水錶櫃
RC COVER FOR BALCONY & UTILITY PLATFORM BELOW AT 3/F	= Reinforced Concrete Cover for Balcony and Utility Platform Below at 3/F	= 3樓之露台及工作平台鋼筋混凝土上蓋置下			
RC COVER FOR BALCONY & UTILITY PLATFORM FOR 15/F ONLY	= Reinforced Concrete Cover for Balcony and Utility Platform for 15/F Only	= 僅於15樓之露台及工作平台鋼筋混凝土上蓋			

#### Notes:

- There are architectural features and/or exposed pipes on external walls of some of the floors. For their locations, please refer to the latest approved building plans.
- Exposed or concealed common pipes are located at or adjacent to balcony and/or flat roof and/or utility platform and/or air-conditioner platform and/or external wall of some residential units. For their locations, please refer to the latest approved building plans.
- Some residential units have ceiling bulkheads and/or sunken slab from the residential unit above, for the installation of air conditioning system and/or electrical and mechanical services, located at living room, dining room, bedrooms, corridor, store room, walk-in closet, bathroom, powder room, lavatory, open kitchen and/or kitchen.
- The internal ceiling height within some residential units may vary due to structural, architectural and/or decoration design variations.
- Balconies and utility platforms are non-enclosed areas.
- Symbols of fittings shown on the floor plans, such as bathtubs, sink, water closets, sink counter, etc., are retrieved from the latest approved building plans for general indication only and reference.
- There are curtain walls in the residential unit. The Saleable Area as defined in the Formal Agreement for Sale and Purchase of a residential unit has included the curtain walls, and is measured from the exterior of such curtain walls.
- 4/F, 13/F, 14/F and 24/F are omitted.

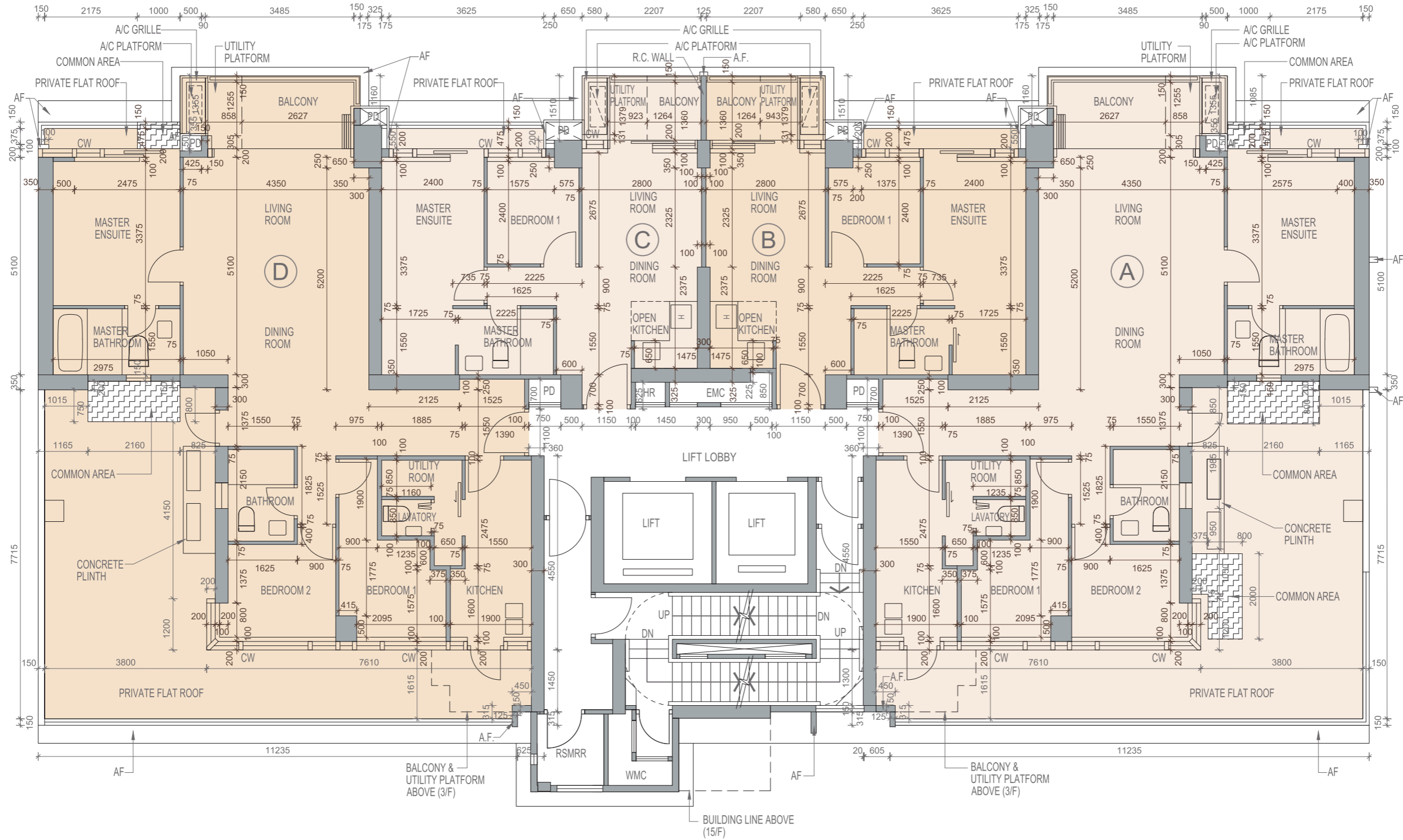
#### 備註：

- 部分樓層外牆範圍設有建築裝飾及/或外露喉管，其位置請參考最新批准的建築圖則。
- 部分住宅單位的露台及/或平台及/或工作平台及/或空調機平台及/或外牆或其旁設有外露或內藏之公用喉管，其位置請參考最新批准的建築圖則。
- 部分住宅單位客廳、飯廳、睡房、走廊、儲物房、衣帽間、浴室、化妝間、洗手間、開放式廚房及/或廚房有天花裝飾橫樑及/或上層住宅單位之跌級樓板用以安裝空調系統及/或機電設備。
- 部分住宅單位之室內天花高度將會因應結構、建築及/或裝修設計上的需要而有差異。
- 露台及工作平台為非封閉的地方。
- 樓面平面圖上所顯示的形象裝置符號，例如浴缸、洗滌盆、坐廁、洗滌盆櫃等乃摘自最新的經批准的建築圖則，只作一般性標誌及參考。
- 住宅單位有幕牆。住宅單位之正式買賣合約內所定義之實用面積已包括幕牆，並由該幕牆之外圍起計。
- 不設4樓、13樓、14樓及24樓。

# 11 FLOOR PLANS OF RESIDENTIAL PROPERTIES IN THE DEVELOPMENT

## 發展項目的住宅物業的樓面平面圖

2/F Floor Plan  
2樓 樓面平面圖



Scale: 5m (米)  
比例：0

# 11 FLOOR PLANS OF RESIDENTIAL PROPERTIES IN THE DEVELOPMENT

## 發展項目的住宅物業的樓面平面圖

### 2/F Floor Plan 2樓 樓面平面圖

	Floor 樓層	Unit 單位			
		A	B	C	D
The thickness of the floor slabs (excluding plaster) of each residential property (mm) 每個住宅物業的樓板(不包括灰泥)的厚度(毫米)	2/F 2樓	150	150	150	150
The floor-to-floor height of each residential property (mm) 每個住宅物業的層與層之間的高度(毫米)		2950, 3300, ^3300, ^3650	2950, 3300, ^3300, ^3650	2950, 3300, ^3300, ^3650	2950, 3300, ^3300, ^3650

^ inclusive of the sunken depth of the sunken slab on the floor of this floor (350mm)

^ 包括本層地台跌級樓板之跌級深度(350毫米)

The internal areas of the residential properties on the upper floors will generally be slightly larger than those on the lower floors because of the reducing thickness of the structural walls on the upper floors. (Note: This statement required under Section 10(2)(e) in Part I of Schedule 1 to the Residential Properties (First-hand Sales) Ordinance (Cap.621) is not applicable to the Development.)

Please refer to page 26 to page 27 of this sales brochure for the notes and legends of the terms and abbreviations for the floor plans of residential properties.

Notes:

1. The dimensions in floor plans are all structural dimensions in millimetre.
2. Those parts of the flat roof uncoloured on the floor plans are common areas for building facility maintenance.
3. 4/F, 13/F, 14/F and 24/F are omitted.

因住宅物業的較高樓層的結構牆的厚度遞減，較高樓層的內部面積，一般比較低樓層的內部面積稍大。(註：此根據《一手住宅物業銷售條例》(第621章)附表1第1部第10(2)(e)條所規定的陳述並不適用於發展項目。)

請參閱本售樓說明書第26頁至第27頁為住宅物業樓面平面圖而設之備註及名詞及簡稱的圖例。

備註：

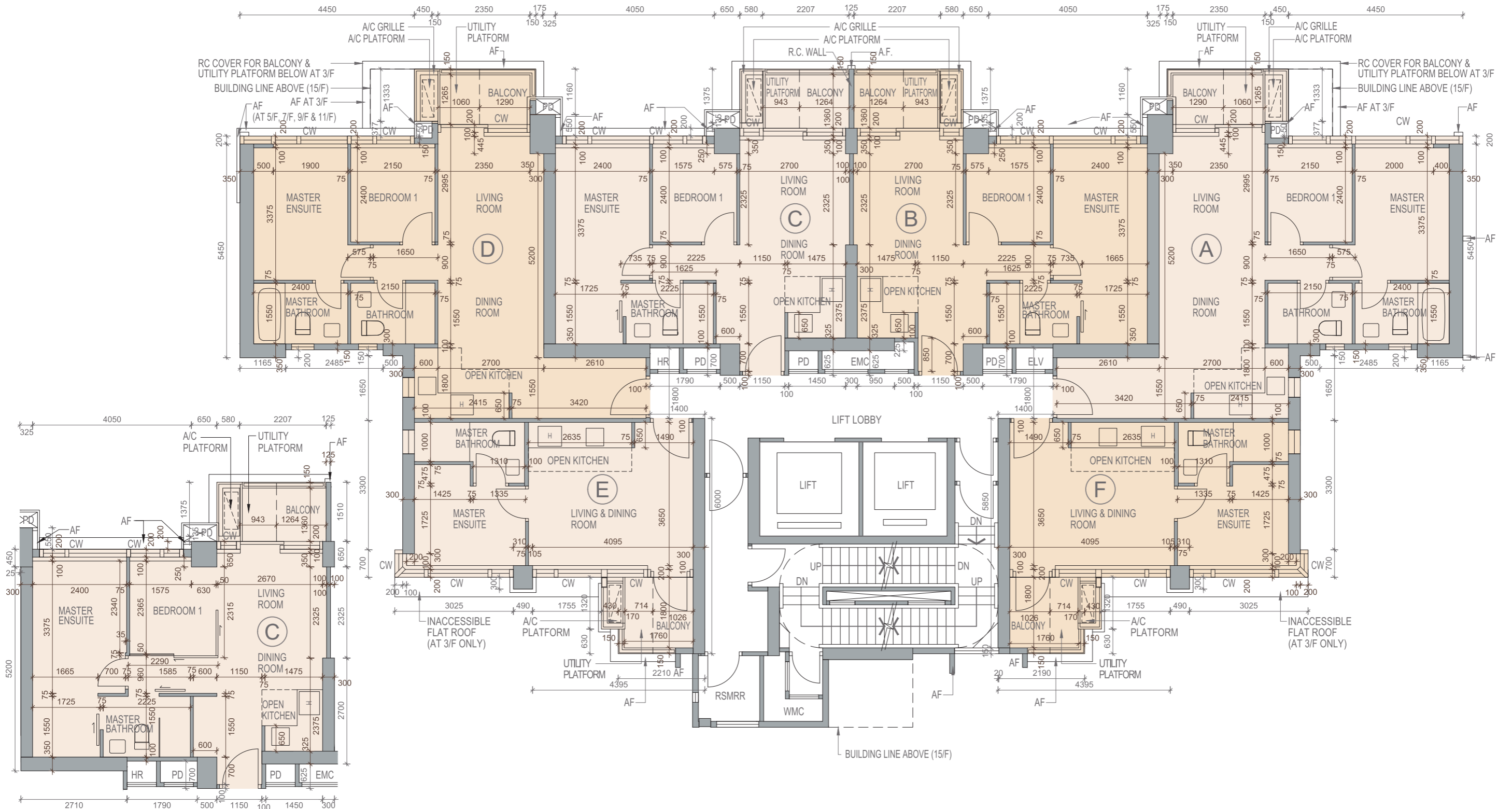
1. 樓面平面圖所列的數字為以毫米標示之建築結構尺寸。
2. 樓面平面圖上未有填色的部分平台為供維修大廈設備使用的公用地方。
3. 不設4樓、13樓、14樓及24樓。

# 11 FLOOR PLANS OF RESIDENTIAL PROPERTIES IN THE DEVELOPMENT

## 發展項目的住宅物業的樓面平面圖

### 3/F, 5/F-12/F Floor Plan

### 3樓、5樓至12樓 樓面平面圖



12/F Unit C Plan  
12樓C單位之平面圖

Scale: 5m (米)  
比例：0

# 11 FLOOR PLANS OF RESIDENTIAL PROPERTIES IN THE DEVELOPMENT

## 發展項目的住宅物業的樓面平面圖

### 3/F, 5/F-12/F Floor Plan

#### 3樓、5樓至12樓 樓面平面圖

	Floor 樓層	Unit 單位					
		A	B	C	D	E	F
The thickness of the floor slabs (excluding plaster) of each residential property (mm) 每個住宅物業的樓板(不包括灰泥)的厚度(毫米)	3/F, 5/F-12/F 3樓、5樓至12樓	150	150	150	150	150	150
The floor-to-floor height of each residential property (mm) 每個住宅物業的層與層之間的高度(毫米)	3/F, 5/F-11/F 3樓、5樓至11樓	3300, ^3300	3300, ^3300	3300, ^3300	3300, ^3300	3300, ^3300	3300, ^3300
	12/F 12樓	2850, 2950, 3300, ^3300, ^3650	2950, 3300, ^3300, ^3650	2950, 3050, 3150, 3300, ^3300, ^3400, ^3500, ^3650	2850, 2950, 3300, ^3300, ^3650	2950, 3300, ^3300, ^3650	2950, 3300, ^3300, ^3650

^ inclusive of the sunken depth of the sunken slab on the floor of this floor (350mm)

^ 包括本層地台跌級樓板之跌級深度(350毫米)

The internal areas of the residential properties on the upper floors will generally be slightly larger than those on the lower floors because of the reducing thickness of the structural walls on the upper floors. (Note: This statement required under Section 10(2)(e) in Part I of Schedule 1 to the Residential Properties (First-hand Sales) Ordinance (Cap.621) is not applicable to the Development.)

Please refer to page 26 to page 27 of this sales brochure for the notes and legends of the terms and abbreviations for the floor plans of residential properties.

Notes:

1. The dimensions in floor plans are all structural dimensions in millimetre.
2. Those parts of the flat roof uncoloured on the floor plans are common areas for building facility maintenance.
3. 4/F, 13/F, 14/F and 24/F are omitted.

因住宅物業的較高樓層的結構牆的厚度遞減，較高樓層的內部面積，一般比較低樓層的內部面積稍大。(註：此根據《一手住宅物業銷售條例》(第621章)附表1第1部第10(2)(e)條所規定的陳述並不適用於發展項目。)

請參閱本售樓說明書第26頁至第27頁為住宅物業樓面平面圖而設之備註及名詞及簡稱的圖例。

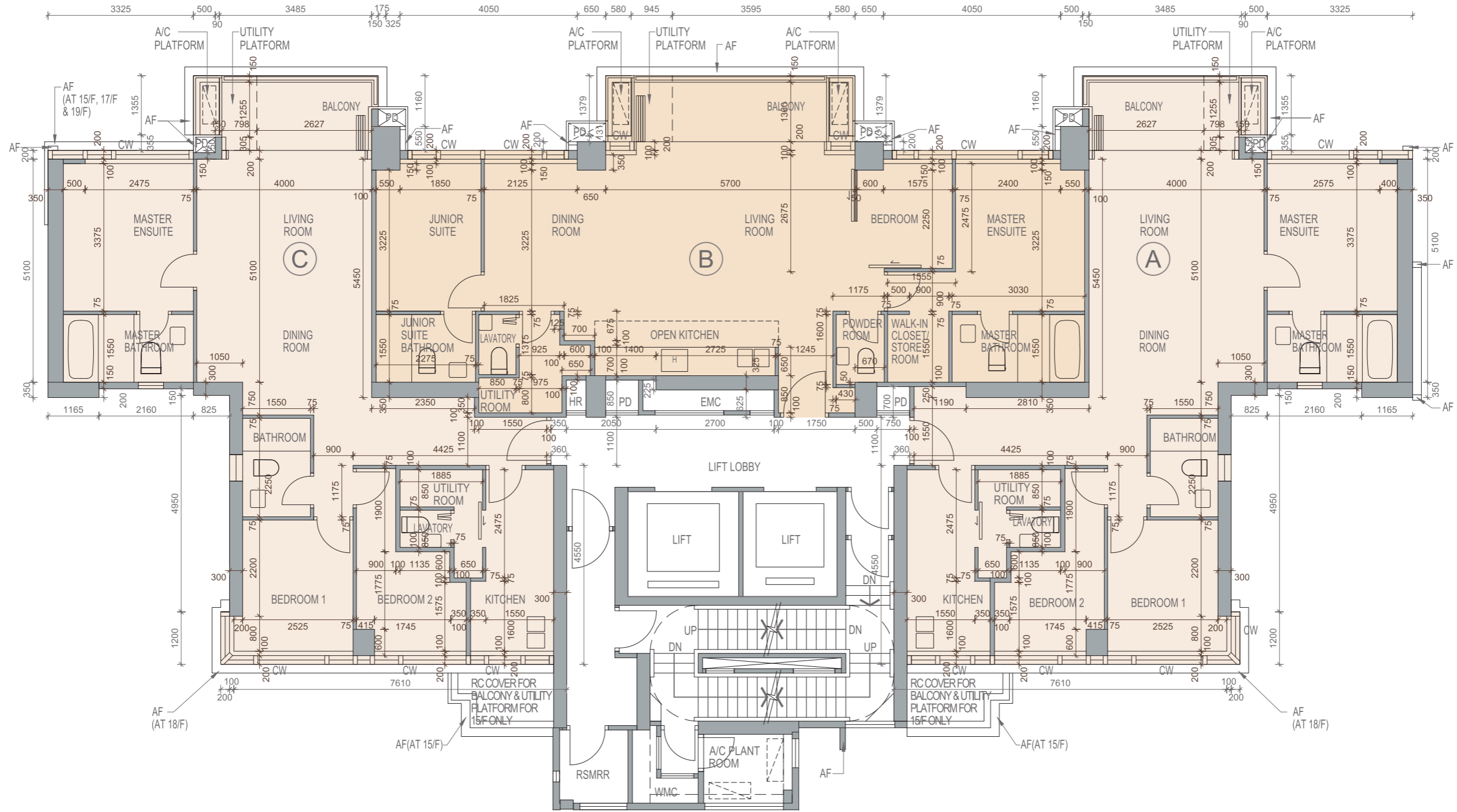
備註：

1. 樓面平面圖所列的數字為以毫米標示之建築結構尺寸。
2. 樓面平面圖上未有填色的部分平台為供維修大廈設備使用的公用地方。
3. 不設4樓、13樓、14樓及24樓。

# 11 FLOOR PLANS OF RESIDENTIAL PROPERTIES IN THE DEVELOPMENT

## 發展項目的住宅物業的樓面平面圖

15/F-19/F Floor Plan  
15樓至19樓 樓面平面圖



Scale: 5m (米)  
比例: 0 5m (米)

# 11 FLOOR PLANS OF RESIDENTIAL PROPERTIES IN THE DEVELOPMENT

## 發展項目的住宅物業的樓面平面圖

### 15/F-19/F Floor Plan 15樓至19樓 樓面平面圖

	Floor 樓層	Unit 單位		
		A	B	C
The thickness of the floor slabs (excluding plaster) of each residential property (mm) 每個住宅物業的樓板(不包括灰泥)的厚度(毫米)	15/F-19/F 15樓至19樓	150	150	150
The floor-to-floor height of each residential property (mm) 每個住宅物業的層與層之間的高度(毫米)		3300, ^3300, *3300	3300, ^3300, &3300, %3300	3300, ^3300, *3300

& inclusive of the sunken depth of the sunken slab on the floor of this floor (150mm)  
 % inclusive of the sunken depth of the sunken slab on the floor of this floor (250mm)  
 ^ inclusive of the sunken depth of the sunken slab on the floor of this floor (350mm)  
 \* inclusive of the sunken depth of the sunken slab on the floor of this floor (450mm)

& 包括本層地台跌級樓板之跌級深度(150毫米)  
 % 包括本層地台跌級樓板之跌級深度(250毫米)  
 ^ 包括本層地台跌級樓板之跌級深度(350毫米)  
 \* 包括本層地台跌級樓板之跌級深度(450毫米)

The internal areas of the residential properties on the upper floors will generally be slightly larger than those on the lower floors because of the reducing thickness of the structural walls on the upper floors. (Note: This statement required under Section 10(2)(e) in Part I of Schedule 1 to the Residential Properties (First-hand Sales) Ordinance (Cap.621) is not applicable to the Development.)

Please refer to page 26 to page 27 of this sales brochure for the notes and legends of the terms and abbreviations for the floor plans of residential properties.

Notes:

1. The dimensions in floor plans are all structural dimensions in millimetre.
2. Those parts of the flat roof uncoloured on the floor plans are common areas for building facility maintenance.
3. 4/F, 13/F, 14/F and 24/F are omitted.

因住宅物業的較高樓層的結構牆的厚度遞減，較高樓層的內部面積，一般比較低樓層的內部面積稍大。(註：此根據《一手住宅物業銷售條例》(第621章)附表1第1部第10(2)(e)條所規定的陳述並不適用於發展項目。)

請參閱本售樓說明書第26頁至第27頁為住宅物業樓面平面圖而設之備註及名詞及簡稱的圖例。

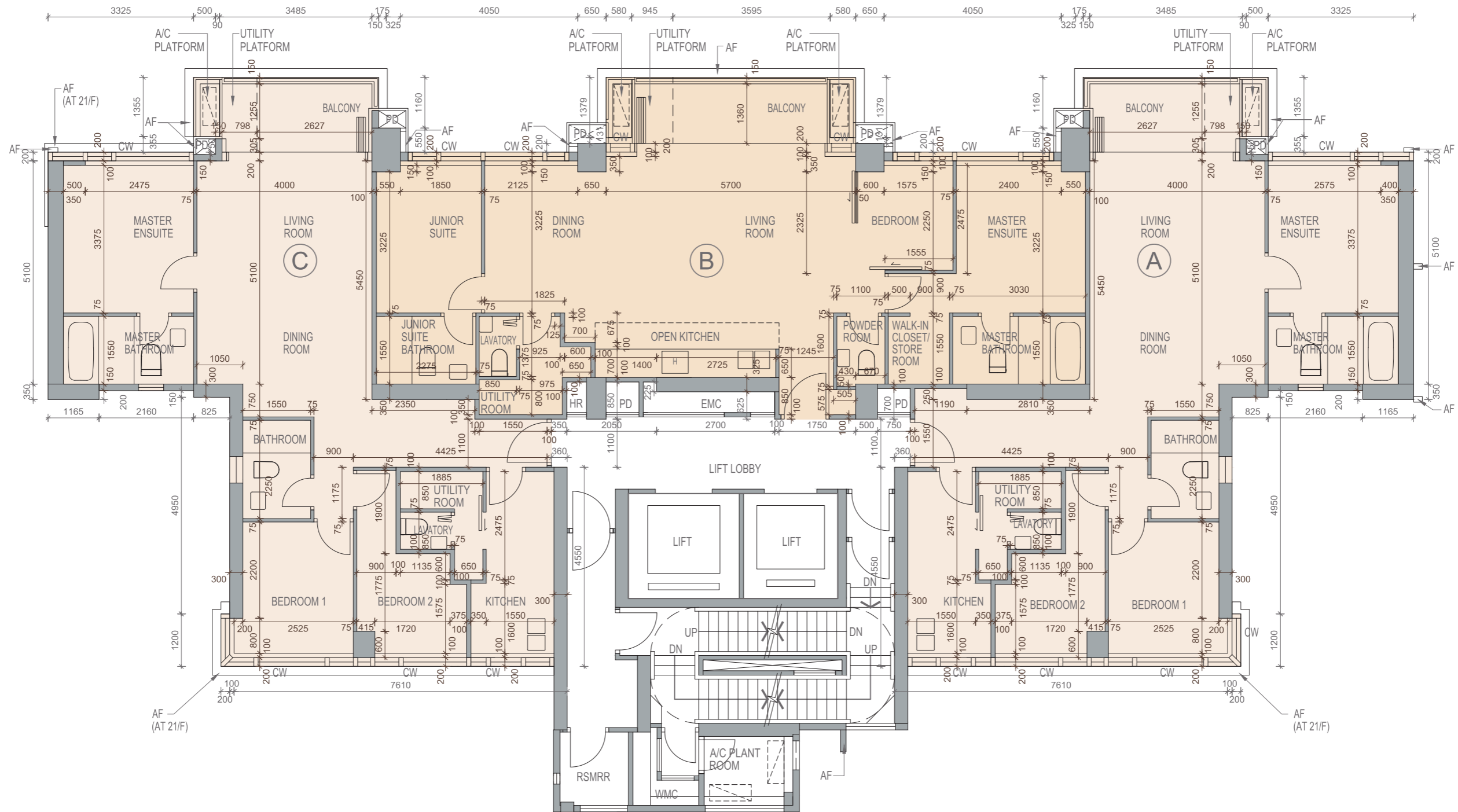
備註：

1. 樓面平面圖所列的數字為以毫米標示之建築結構尺寸。
2. 樓面平面圖上未有填色的部分平台為供維修大廈設備使用的公用地方。
3. 不設4樓、13樓、14樓及24樓。

# 11 FLOOR PLANS OF RESIDENTIAL PROPERTIES IN THE DEVELOPMENT

## 發展項目的住宅物業的樓面平面圖

20/F-21/F Floor Plan  
20樓至21樓 樓面平面圖



Scale: 5m (米)  
比例: 0

# 11 FLOOR PLANS OF RESIDENTIAL PROPERTIES IN THE DEVELOPMENT

## 發展項目的住宅物業的樓面平面圖

### 20/F-21/F Floor Plan 20樓至21樓 樓面平面圖

	Floor 樓層	Unit 單位		
		A	B	C
The thickness of the floor slabs (excluding plaster) of each residential property (mm) 每個住宅物業的樓板(不包括灰泥)的厚度(毫米)	20/F-21/F 20樓至21樓	150	150	150
The floor-to-floor height of each residential property (mm) 每個住宅物業的層與層之間的高度(毫米)		3300, ^3300, *3300	3300, ^3300, &3300, %3300	3300, ^3300, *3300

& inclusive of the sunken depth of the sunken slab on the floor of this floor (150mm)  
% inclusive of the sunken depth of the sunken slab on the floor of this floor (250mm)  
^ inclusive of the sunken depth of the sunken slab on the floor of this floor (350mm)  
\* inclusive of the sunken depth of the sunken slab on the floor of this floor (450mm)

& 包括本層地台跌級樓板之跌級深度(150毫米)  
% 包括本層地台跌級樓板之跌級深度(250毫米)  
^ 包括本層地台跌級樓板之跌級深度(350毫米)  
\* 包括本層地台跌級樓板之跌級深度(450毫米)

The internal areas of the residential properties on the upper floors will generally be slightly larger than those on the lower floors because of the reducing thickness of the structural walls on the upper floors. (Note: This statement required under Section 10(2)(e) in Part I of Schedule 1 to the Residential Properties (First-hand Sales) Ordinance (Cap.621) is not applicable to the Development.)

Please refer to page 26 to page 27 of this sales brochure for the notes and legends of the terms and abbreviations for the floor plans of residential properties.

Notes:

1. The dimensions in floor plans are all structural dimensions in millimetre.
2. Those parts of the flat roof uncoloured on the floor plans are common areas for building facility maintenance.
3. 4/F, 13/F, 14/F and 24/F are omitted.

因住宅物業的較高樓層的結構牆的厚度遞減，較高樓層的內部面積，一般比較低樓層的內部面積稍大。(註：此根據《一手住宅物業銷售條例》(第621章)附表1第1部第10(2)(e)條所規定的陳述並不適用於發展項目。)

請參閱本售樓說明書第26頁至第27頁為住宅物業樓面平面圖而設之備註及名詞及簡稱的圖例。

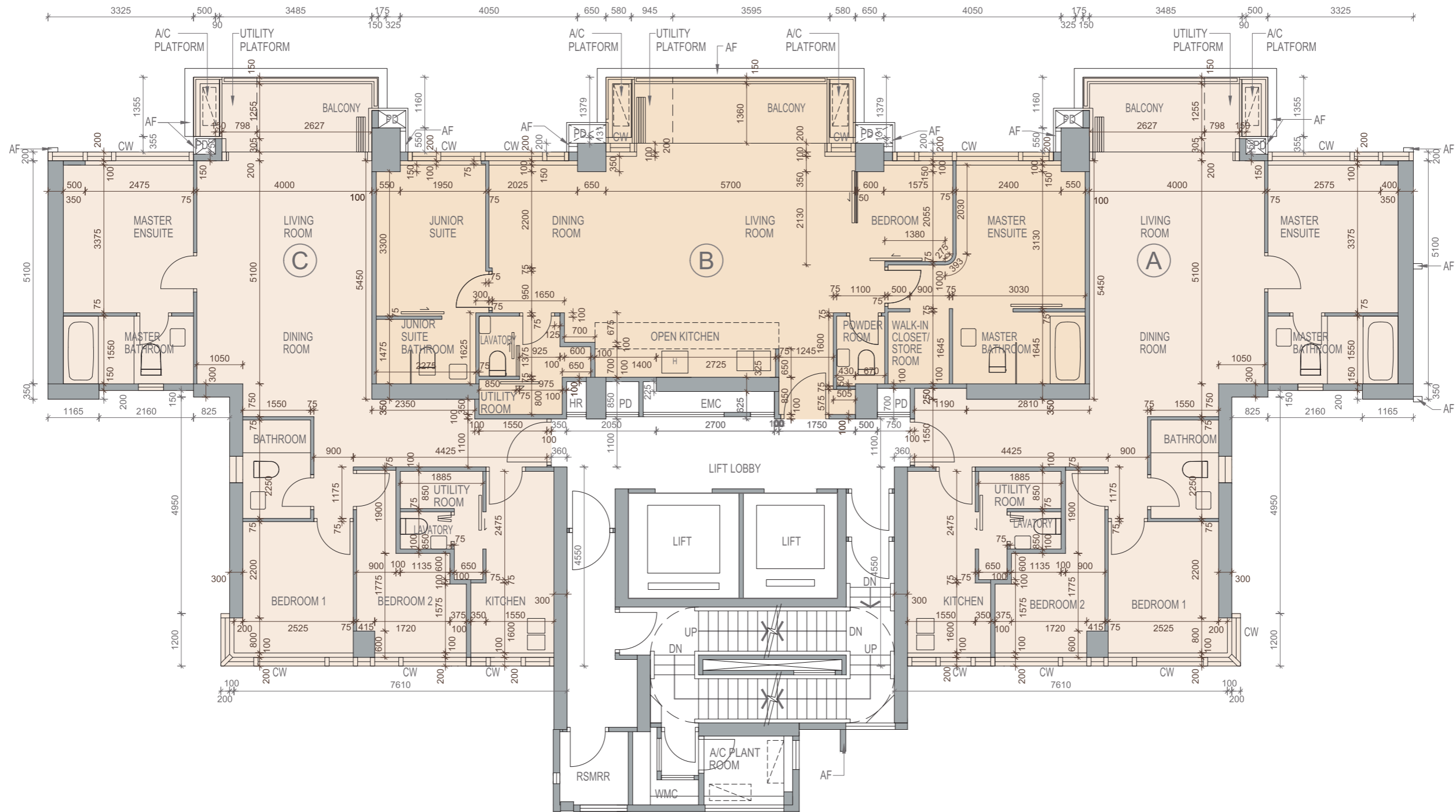
備註：

1. 樓面平面圖所列的數字為以毫米標示之建築結構尺寸。
2. 樓面平面圖上未有填色的部分平台為供維修大廈設備使用的公用地方。
3. 不設4樓、13樓、14樓及24樓。

# 11 FLOOR PLANS OF RESIDENTIAL PROPERTIES IN THE DEVELOPMENT

## 發展項目的住宅物業的樓面平面圖

22/F Floor Plan  
22樓樓面平面圖



Scale: 5m (米)  
比例：0

# 11 FLOOR PLANS OF RESIDENTIAL PROPERTIES IN THE DEVELOPMENT

## 發展項目的住宅物業的樓面平面圖

### 22/F Floor Plan 22樓 樓面平面圖

	Floor 樓層	Unit 單位		
		A	B	C
The thickness of the floor slabs (excluding plaster) of each residential property (mm) 每個住宅物業的樓板(不包括灰泥)的厚度(毫米)	22/F 22樓	150	150	150
The floor-to-floor height of each residential property (mm) 每個住宅物業的層與層之間的高度(毫米)		3300, ^3300, *3300	3300, ^3300, &3300, %3300	3300, ^3300, *3300

& inclusive of the sunken depth of the sunken slab on the floor of this floor (150mm)  
% inclusive of the sunken depth of the sunken slab on the floor of this floor (250mm)  
^ inclusive of the sunken depth of the sunken slab on the floor of this floor (350mm)  
\* inclusive of the sunken depth of the sunken slab on the floor of this floor (450mm)

& 包括本層地台跌級樓板之跌級深度(150毫米)  
% 包括本層地台跌級樓板之跌級深度(250毫米)  
^ 包括本層地台跌級樓板之跌級深度(350毫米)  
\* 包括本層地台跌級樓板之跌級深度(450毫米)

The internal areas of the residential properties on the upper floors will generally be slightly larger than those on the lower floors because of the reducing thickness of the structural walls on the upper floors. (Note: This statement required under Section 10(2)(e) in Part I of Schedule 1 to the Residential Properties (First-hand Sales) Ordinance (Cap.621) is not applicable to the Development.)

Please refer to page 26 to page 27 of this sales brochure for the notes and legends of the terms and abbreviations for the floor plans of residential properties.

Notes:

1. The dimensions in floor plans are all structural dimensions in millimetre.
2. Those parts of the flat roof uncoloured on the floor plans are common areas for building facility maintenance.
3. 4/F, 13/F, 14/F and 24/F are omitted.

因住宅物業的較高樓層的結構牆的厚度遞減，較高樓層的內部面積，一般比較低樓層的內部面積稍大。(註：此根據《一手住宅物業銷售條例》(第621章)附表1第1部第10(2)(e)條所規定的陳述並不適用於發展項目。)

請參閱本售樓說明書第26頁至第27頁為住宅物業樓面平面圖而設之備註及名詞及簡稱的圖例。

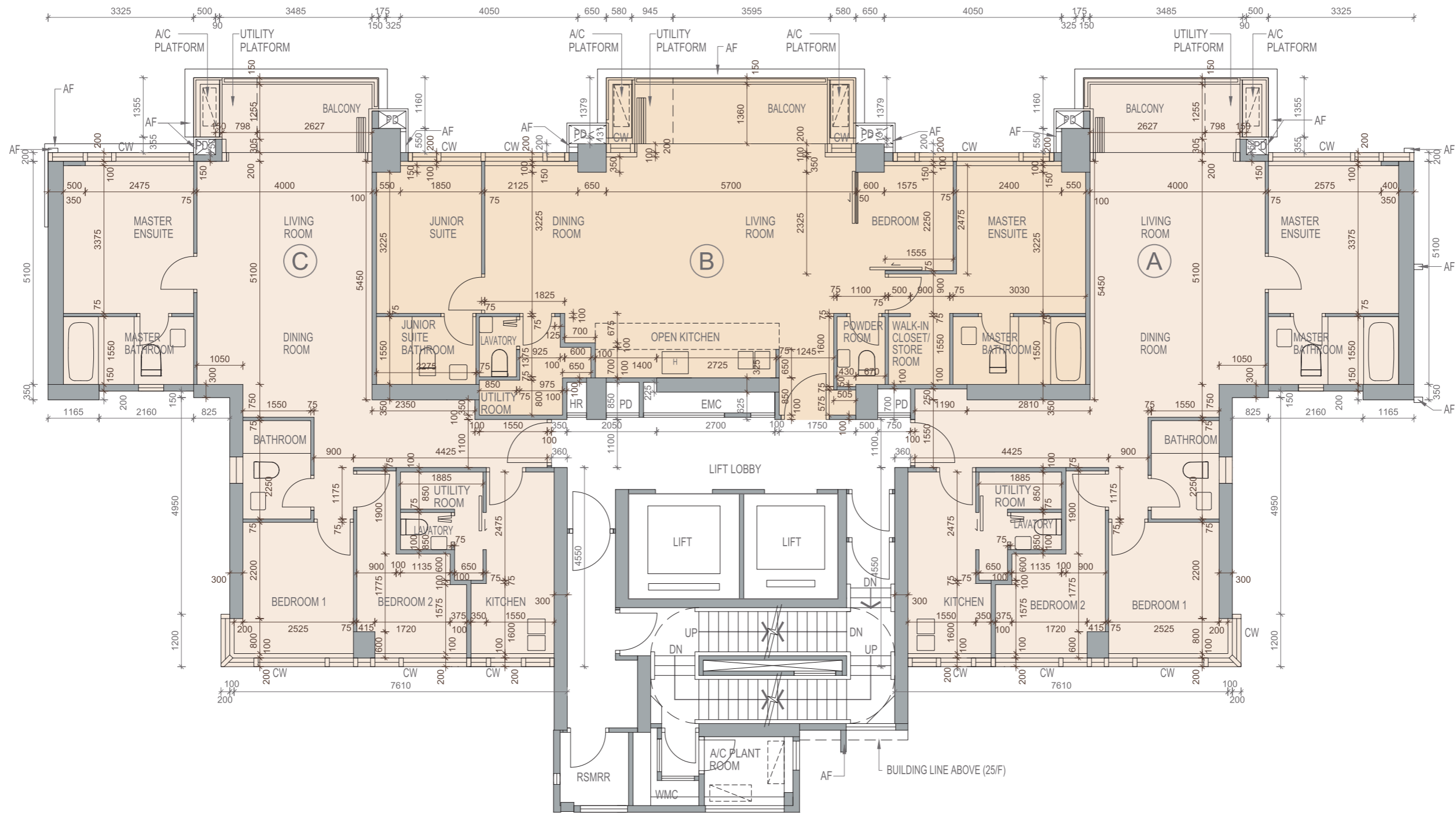
備註：

1. 樓面平面圖所列的數字為以毫米標示之建築結構尺寸。
2. 樓面平面圖上未有填色的部分平台為供維修大廈設備使用的公用地方。
3. 不設4樓、13樓、14樓及24樓。

# 11 FLOOR PLANS OF RESIDENTIAL PROPERTIES IN THE DEVELOPMENT

## 發展項目的住宅物業的樓面平面圖

23/F Floor Plan  
23樓樓面平面圖



Scale: 5m (米)  
比例: 0

# 11 FLOOR PLANS OF RESIDENTIAL PROPERTIES IN THE DEVELOPMENT

## 發展項目的住宅物業的樓面平面圖

### 23/F Floor Plan

#### 23樓 樓面平面圖

	Floor 樓層	Unit 單位		
		A	B	C
The thickness of the floor slabs (excluding plaster) of each residential property (mm) 每個住宅物業的樓板(不包括灰泥)的厚度(毫米)	23/F 23樓	150	150	150
The floor-to-floor height of each residential property (mm) 每個住宅物業的層與層之間的高度(毫米)		2950, 3150, ^3200, 3300, ^3300, *3300, ^3650, *3750	2950, 3300, ^3300, &3450, %3550, ^3650	2850, 2950, 3300, ^3300, *3300, ^3650, *3750

& inclusive of the sunken depth of the sunken slab on the floor of this floor (150mm)

% inclusive of the sunken depth of the sunken slab on the floor of this floor (250mm)

^ inclusive of the sunken depth of the sunken slab on the floor of this floor (350mm)

\* inclusive of the sunken depth of the sunken slab on the floor of this floor (450mm)

& 包括本層地台跌級樓板之跌級深度(150毫米)

% 包括本層地台跌級樓板之跌級深度(250毫米)

^ 包括本層地台跌級樓板之跌級深度(350毫米)

\* 包括本層地台跌級樓板之跌級深度(450毫米)

The internal areas of the residential properties on the upper floors will generally be slightly larger than those on the lower floors because of the reducing thickness of the structural walls on the upper floors. (Note: This statement required under Section 10(2)(e) in Part I of Schedule 1 to the Residential Properties (First-hand Sales) Ordinance (Cap.621) is not applicable to the Development.)

Please refer to page 26 to page 27 of this sales brochure for the notes and legends of the terms and abbreviations for the floor plans of residential properties.

#### Notes:

1. The dimensions in floor plans are all structural dimensions in millimetre.
2. Those parts of the flat roof uncoloured on the floor plans are common areas for building facility maintenance.
3. 4/F, 13/F, 14/F and 24/F are omitted.

因住宅物業的較高樓層的結構牆的厚度遞減，較高樓層的內部面積，一般比較低樓層的內部面積稍大。(註：此根據《一手住宅物業銷售條例》(第621章)附表1第1部第10(2)(e)條所規定的陳述並不適用於發展項目。)

請參閱本售樓說明書第26頁至第27頁為住宅物業樓面平面圖而設之備註及名詞及簡稱的圖例。

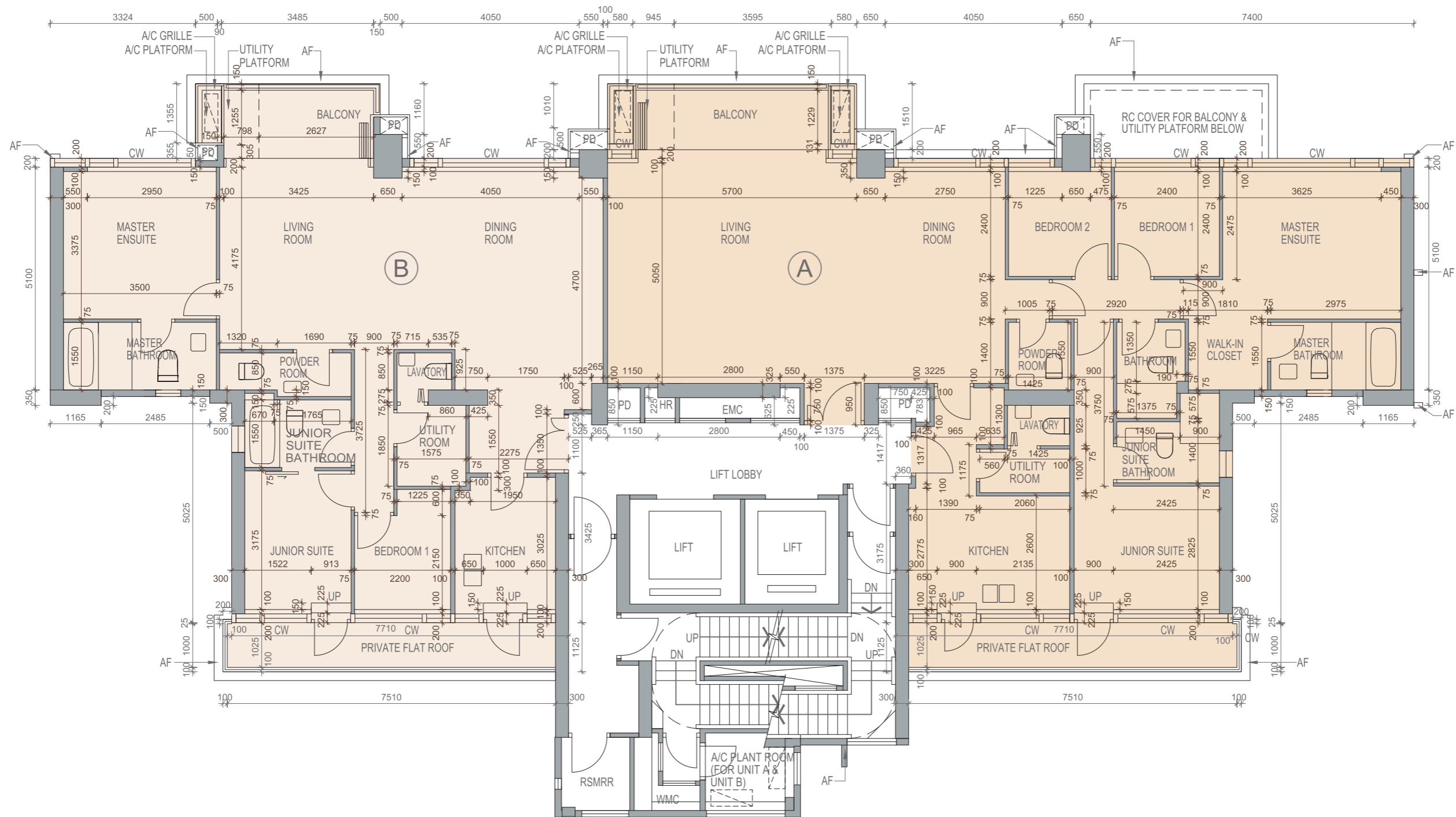
#### 備註：

1. 樓面平面圖所列的數字為以毫米標示之建築結構尺寸。
2. 樓面平面圖上未有填色的部分平台為供維修大廈設備使用的公用地方。
3. 不設4樓、13樓、14樓及24樓。

# 11 FLOOR PLANS OF RESIDENTIAL PROPERTIES IN THE DEVELOPMENT

## 發展項目的住宅物業的樓面平面圖

25/F Floor Plan  
25樓樓面平面圖



Scale: 5m (米)  
比例：0

# 11 FLOOR PLANS OF RESIDENTIAL PROPERTIES IN THE DEVELOPMENT

## 發展項目的住宅物業的樓面平面圖

### 25/F Floor Plan 25樓 樓面平面圖

	Floor 樓層	Unit 單位	
		A	B
The thickness of the floor slabs (excluding plaster) of each residential property (mm) 每個住宅物業的樓板(不包括灰泥)的厚度(毫米)	25/F 25樓	150, 175	150, 175
The floor-to-floor height of each residential property (mm) 每個住宅物業的層與層之間的高度(毫米)		3050, 3150, 3500, *3500, ^3500, &3650, ^3850	3150, 3500, ^3500, *3500, ^3850, *3950

& inclusive of the sunken depth of the sunken slab on the floor of this floor (150mm)

^ inclusive of the sunken depth of the sunken slab on the floor of this floor (350mm)

\* inclusive of the sunken depth of the sunken slab on the floor of this floor (450mm)

& 包括本層地台跌級樓板之跌級深度(150毫米)

^ 包括本層地台跌級樓板之跌級深度(350毫米)

\* 包括本層地台跌級樓板之跌級深度(450毫米)

The internal areas of the residential properties on the upper floors will generally be slightly larger than those on the lower floors because of the reducing thickness of the structural walls on the upper floors. (Note: This statement required under Section 10(2)(e) in Part I of Schedule 1 to the Residential Properties (First-hand Sales) Ordinance (Cap.621) is not applicable to the Development.)

Please refer to page 26 to page 27 of this sales brochure for the notes and legends of the terms and abbreviations for the floor plans of residential properties.

Notes:

1. The dimensions in floor plans are all structural dimensions in millimetre.
2. Those parts of the flat roof uncoloured on the floor plans are common areas for building facility maintenance.
3. 4/F, 13/F, 14/F and 24/F are omitted.

因住宅物業的較高樓層的結構牆的厚度遞減，較高樓層的內部面積，一般比較低樓層的內部面積稍大。(註：此根據《一手住宅物業銷售條例》(第621章)附表1第1部第10(2)(e)條所規定的陳述並不適用於發展項目。)

請參閱本售樓說明書第26頁至第27頁為住宅物業樓面平面圖而設之備註及名詞及簡稱的圖例。

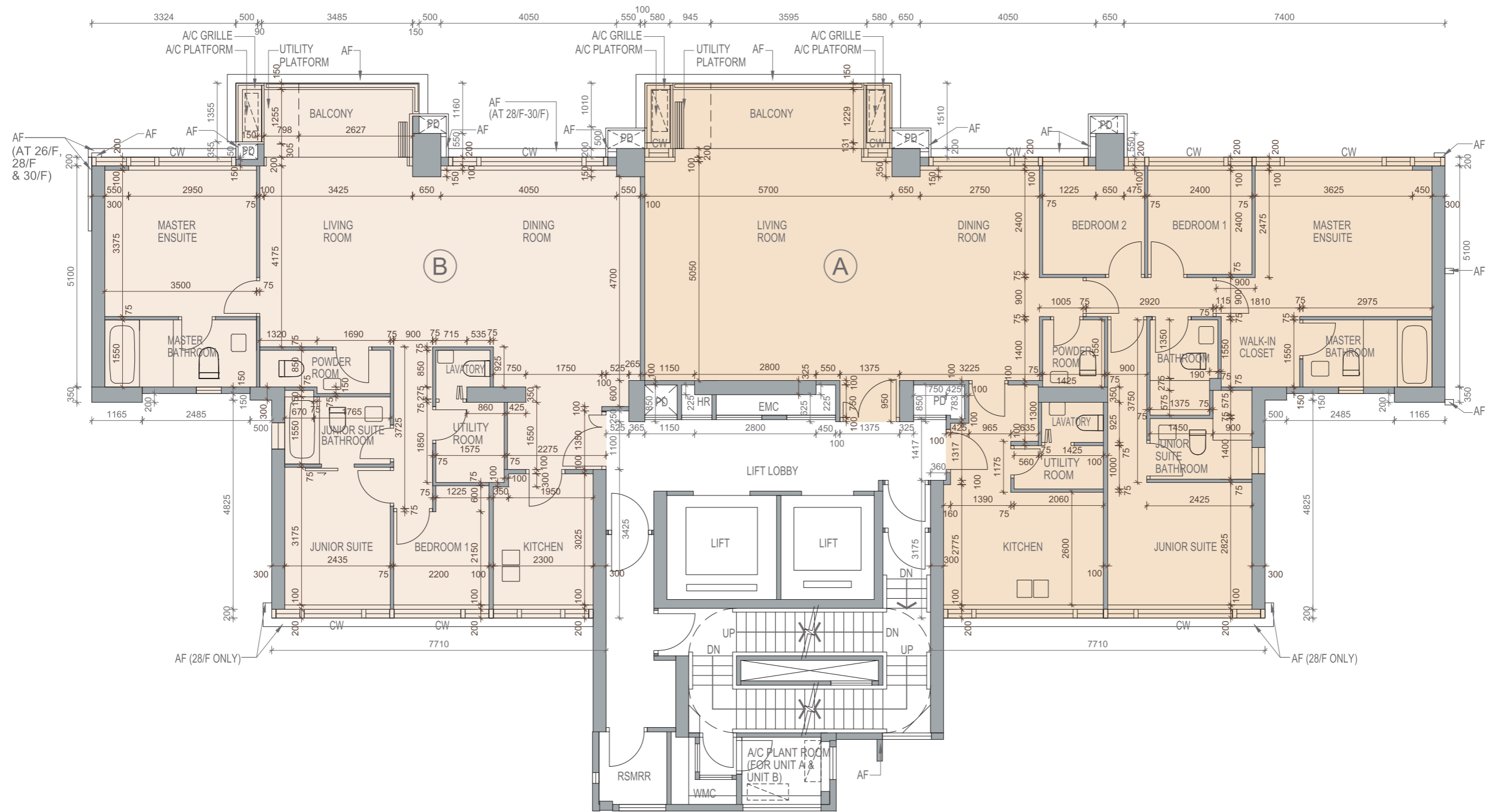
備註：

1. 樓面平面圖所列的數字為以毫米標示之建築結構尺寸。
2. 樓面平面圖上未有填色的部分平台為供維修大廈設備使用的公用地方。
3. 不設4樓、13樓、14樓及24樓。

# 11 FLOOR PLANS OF RESIDENTIAL PROPERTIES IN THE DEVELOPMENT

## 發展項目的住宅物業的樓面平面圖

26/F-30/F Floor Plan  
26樓至30樓 樓面平面圖



Scale: 比例：0 5m (米)

# 11 FLOOR PLANS OF RESIDENTIAL PROPERTIES IN THE DEVELOPMENT

## 發展項目的住宅物業的樓面平面圖

### 26/F-30/F Floor Plan 26樓至30樓 樓面平面圖

	Floor 樓層	Unit 單位	
		A	B
The thickness of the floor slabs (excluding plaster) of each residential property (mm) 每個住宅物業的樓板(不包括灰泥)的厚度(毫米)	26/F-30/F 26樓至30樓	150, 175	150, 175
The floor-to-floor height of each residential property (mm) 每個住宅物業的層與層之間的高度(毫米)	26/F-29/F 26樓至29樓	3500, ^3500, *3500	3500, ^3500, *3500
	30/F 30樓	3150, 3500, ^3500, ^3850, *3950	3000, 3150, ^3350, 3500, ^3500, ^3850, *3950

^ inclusive of the sunken depth of the sunken slab on the floor of this floor (350mm)

\* inclusive of the sunken depth of the sunken slab on the floor of this floor (450mm)

^ 包括本層地台跌級樓板之跌級深度(350毫米)

\* 包括本層地台跌級樓板之跌級深度(450毫米)

The internal areas of the residential properties on the upper floors will generally be slightly larger than those on the lower floors because of the reducing thickness of the structural walls on the upper floors. (Note: This statement required under Section 10(2)(e) in Part I of Schedule 1 to the Residential Properties (First-hand Sales) Ordinance (Cap.621) is not applicable to the Development.)

Please refer to page 26 to page 27 of this sales brochure for the notes and legends of the terms and abbreviations for the floor plans of residential properties.

Notes:

1. The dimensions in floor plans are all structural dimensions in millimetre.
2. Those parts of the flat roof uncoloured on the floor plans are common areas for building facility maintenance.
3. 4/F, 13/F, 14/F and 24/F are omitted.

因住宅物業的較高樓層的結構牆的厚度遞減，較高樓層的內部面積，一般比較低樓層的內部面積稍大。(註：此根據《一手住宅物業銷售條例》(第621章)附表1第1部第10(2)(e)條所規定的陳述並不適用於發展項目。)

請參閱本售樓說明書第26頁至第27頁為住宅物業樓面平面圖而設之備註及名詞及簡稱的圖例。

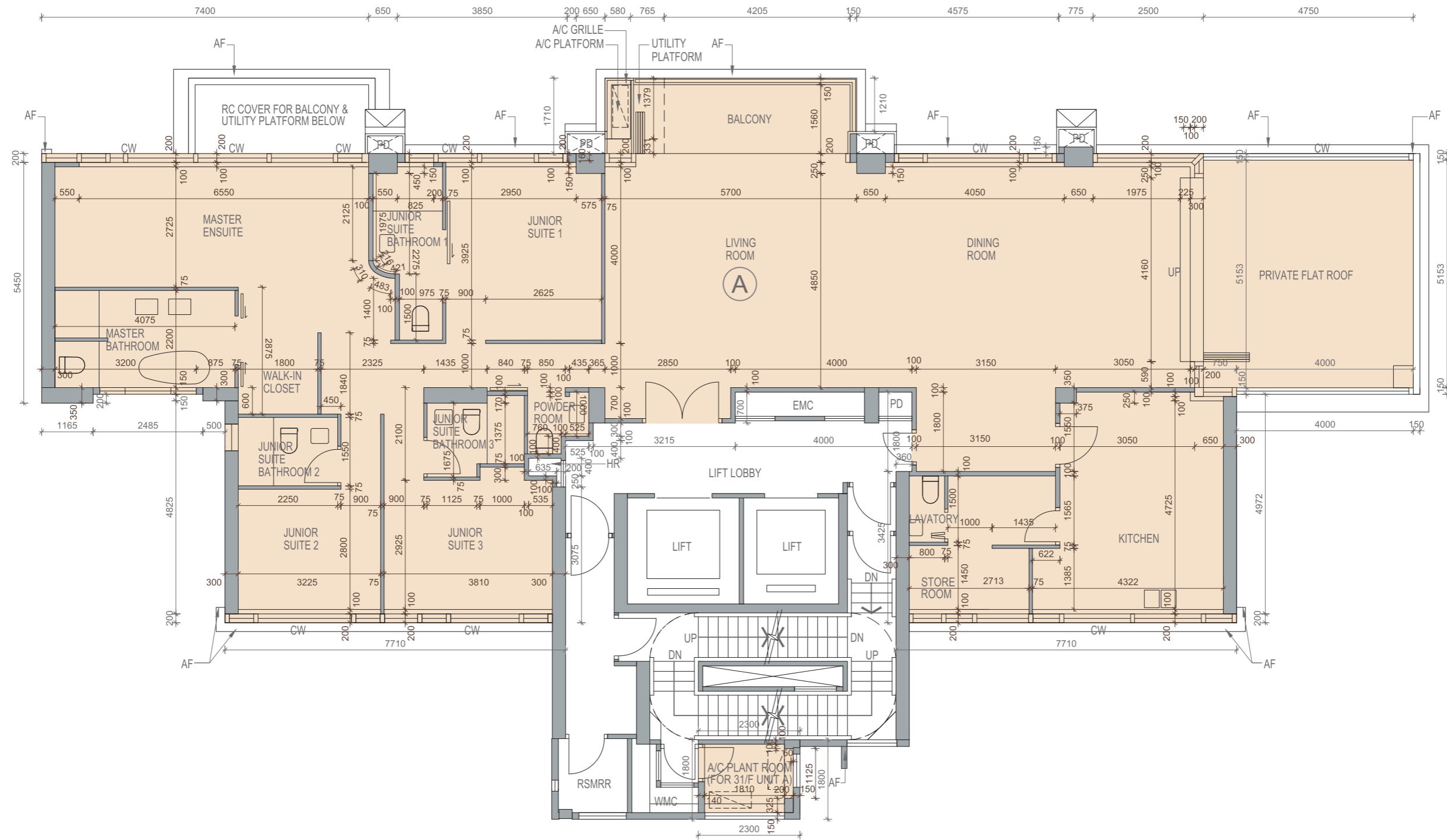
備註：

1. 樓面平面圖所列的數字為以毫米標示之建築結構尺寸。
2. 樓面平面圖上未有填色的部分平台為供維修大廈設備使用的公用地方。
3. 不設4樓、13樓、14樓及24樓。

# 11 FLOOR PLANS OF RESIDENTIAL PROPERTIES IN THE DEVELOPMENT

## 發展項目的住宅物業的樓面平面圖

31/F Floor Plan  
31樓 樓面平面圖



Scale: 5m (米)  
比例：0

# 11 FLOOR PLANS OF RESIDENTIAL PROPERTIES IN THE DEVELOPMENT

## 發展項目的住宅物業的樓面平面圖

### 31/F Floor Plan

#### 31樓 樓面平面圖

	Floor 樓層	Unit 單位
		A
The thickness of the floor slabs (excluding plaster) of each residential property (mm) 每個住宅物業的樓板(不包括灰泥)的厚度(毫米)	31/F 31樓	150, 175
The floor-to-floor height of each residential property (mm) 每個住宅物業的層與層之間的高度(毫米)		3500, ^3500, #3500

^ inclusive of the sunken depth of the sunken slab on the floor of this floor (350mm)

# inclusive of the sunken depth of the sunken slab on the floor of this floor (500mm)

^ 包括本層地台跌級樓板之跌級深度(350毫米)

# 包括本層地台跌級樓板之跌級深度(500毫米)

The internal areas of the residential properties on the upper floors will generally be slightly larger than those on the lower floors because of the reducing thickness of the structural walls on the upper floors. (Note: This statement required under Section 10(2)(e) in Part I of Schedule 1 to the Residential Properties (First-hand Sales) Ordinance (Cap.621) is not applicable to the Development.)

Please refer to page 26 to page 27 of this sales brochure for the notes and legends of the terms and abbreviations for the floor plans of residential properties.

#### Notes:

1. The dimensions in floor plans are all structural dimensions in millimetre.
2. Those parts of the flat roof uncoloured on the floor plans are common areas for building facility maintenance.
3. 4/F, 13/F, 14/F and 24/F are omitted.

因住宅物業的較高樓層的結構牆的厚度遞減，較高樓層的內部面積，一般比較低樓層的內部面積稍大。(註：此根據《一手住宅物業銷售條例》(第621章)附表1第1部第10(2)(e)條所規定的陳述並不適用於發展項目。)

請參閱本售樓說明書第26頁至第27頁為住宅物業樓面平面圖而設之備註及名詞及簡稱的圖例。

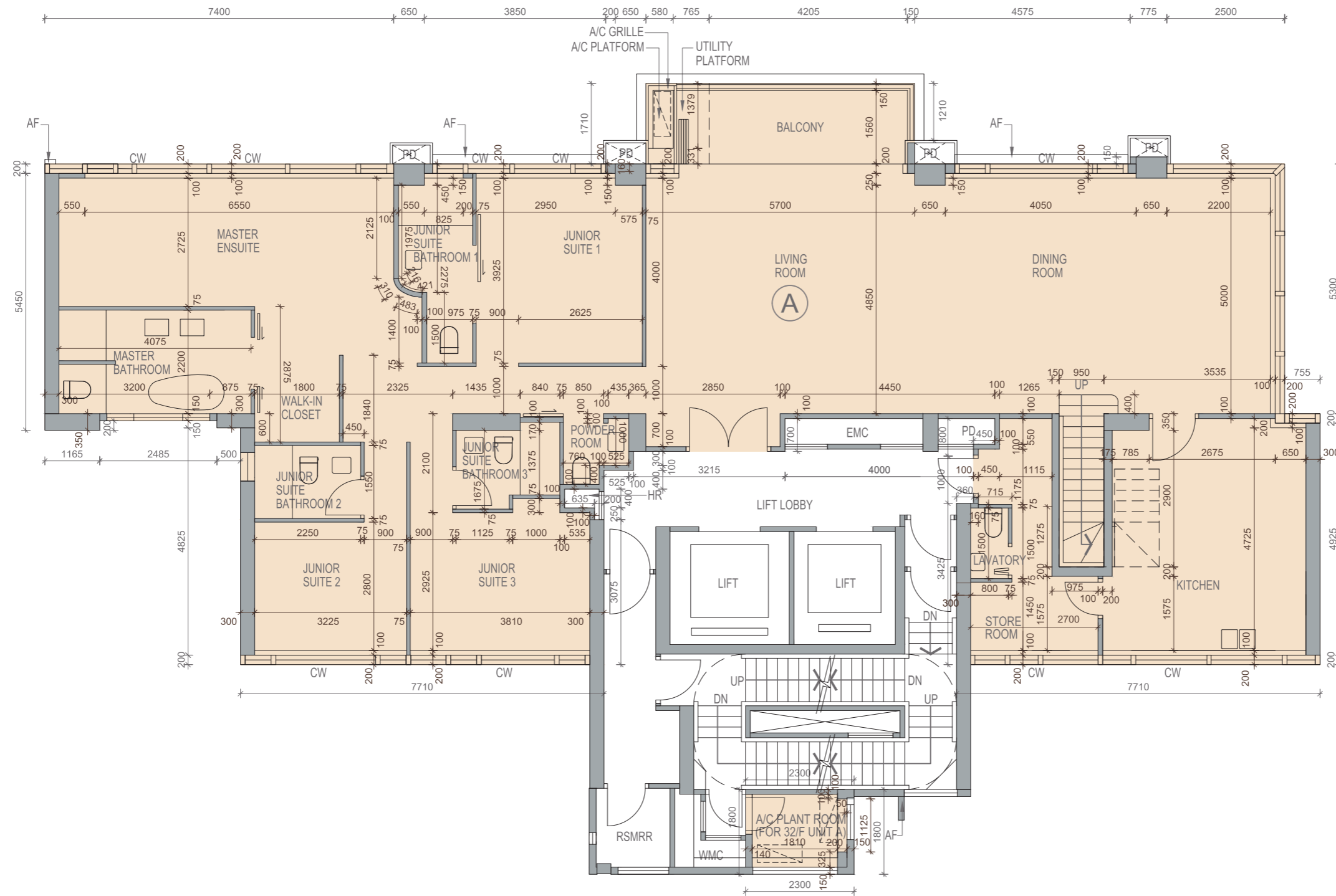
#### 備註：

1. 樓面平面圖所列的數字為以毫米標示之建築結構尺寸。
2. 樓面平面圖上未有填色的部分平台為供維修大廈設備使用的公用地方。
3. 不設4樓、13樓、14樓及24樓。

# 11 FLOOR PLANS OF RESIDENTIAL PROPERTIES IN THE DEVELOPMENT

## 發展項目的住宅物業的樓面平面圖

32/F Floor Plan  
32樓 樓面平面圖



Scale: 5m (米)  
比例：0

# 11 FLOOR PLANS OF RESIDENTIAL PROPERTIES IN THE DEVELOPMENT

## 發展項目的住宅物業的樓面平面圖

### 32/F Floor Plan

#### 32樓 樓面平面圖

	Floor 樓層	Unit 單位
		A
The thickness of the floor slabs (excluding plaster) of each residential property (mm) 每個住宅物業的樓板(不包括灰泥)的厚度(毫米)	32/F 32樓	150, 175
The floor-to-floor height of each residential property (mm) 每個住宅物業的層與層之間的高度(毫米)		3500, ^3850, #4000

^ inclusive of the sunken depth of the sunken slab on the floor of this floor (350mm)

# inclusive of the sunken depth of the sunken slab on the floor of this floor (500mm)

^ 包括本層地台跌級樓板之跌級深度(350毫米)

# 包括本層地台跌級樓板之跌級深度(500毫米)

The internal areas of the residential properties on the upper floors will generally be slightly larger than those on the lower floors because of the reducing thickness of the structural walls on the upper floors. (Note: This statement required under Section 10(2)(e) in Part I of Schedule 1 to the Residential Properties (First-hand Sales) Ordinance (Cap.621) is not applicable to the Development.)

Please refer to page 26 to page 27 of this sales brochure for the notes and legends of the terms and abbreviations for the floor plans of residential properties.

#### Notes:

1. The dimensions in floor plans are all structural dimensions in millimetre.
2. Those parts of the flat roof uncoloured on the floor plans are common areas for building facility maintenance.
3. 4/F, 13/F, 14/F and 24/F are omitted.

因住宅物業的較高樓層的結構牆的厚度遞減，較高樓層的內部面積，一般比較低樓層的內部面積稍大。(註：此根據《一手住宅物業銷售條例》(第621章)附表1第1部第10(2)(e)條所規定的陳述並不適用於發展項目。)

請參閱本售樓說明書第26頁至第27頁為住宅物業樓面平面圖而設之備註及名詞及簡稱的圖例。

#### 備註：

1. 樓面平面圖所列的數字為以毫米標示之建築結構尺寸。
2. 樓面平面圖上未有填色的部分平台為供維修大廈設備使用的公用地方。
3. 不設4樓、13樓、14樓及24樓。



# 11 FLOOR PLANS OF RESIDENTIAL PROPERTIES IN THE DEVELOPMENT

## 發展項目的住宅物業的樓面平面圖

### Roof Floor Plan

#### 天台 樓面平面圖

	Floor 樓層	Unit 單位
		A
The thickness of the floor slabs (excluding plaster) of each residential property (mm) 每個住宅物業的樓板(不包括灰泥)的厚度(毫米)	Roof 天台	Not applicable 不適用
The floor-to-floor height of each residential property (mm) 每個住宅物業的層與層之間的高度(毫米)		

The internal areas of the residential properties on the upper floors will generally be slightly larger than those on the lower floors because of the reducing thickness of the structural walls on the upper floors. (Note: This statement required under Section 10(2)(e) in Part I of Schedule 1 to the Residential Properties (First-hand Sales) Ordinance (Cap.621) is not applicable to the Development.)

Please refer to page 26 to page 27 of this sales brochure for the notes and legends of the terms and abbreviations for the floor plans of residential properties.

Notes:

1. The dimensions in floor plans are all structural dimensions in millimetre.
2. Those parts of the flat roof uncoloured on the floor plans are common areas for building facility maintenance.
3. 4/F, 13/F, 14/F and 24/F are omitted.

因住宅物業的較高樓層的結構牆的厚度遞減，較高樓層的內部面積，一般比較低樓層的內部面積稍大。(註：此根據《一手住宅物業銷售條例》(第621章)附表1第1部第10(2)(e)條所規定的陳述並不適用於發展項目。)

請參閱本售樓說明書第26頁至第27頁為住宅物業樓面平面圖而設之備註及名詞及簡稱的圖例。

備註：

1. 樓面平面圖所列的數字為以毫米標示之建築結構尺寸。
2. 樓面平面圖上未有填色的部分平台為供維修大廈設備使用的公用地方。
3. 不設4樓、13樓、14樓及24樓。