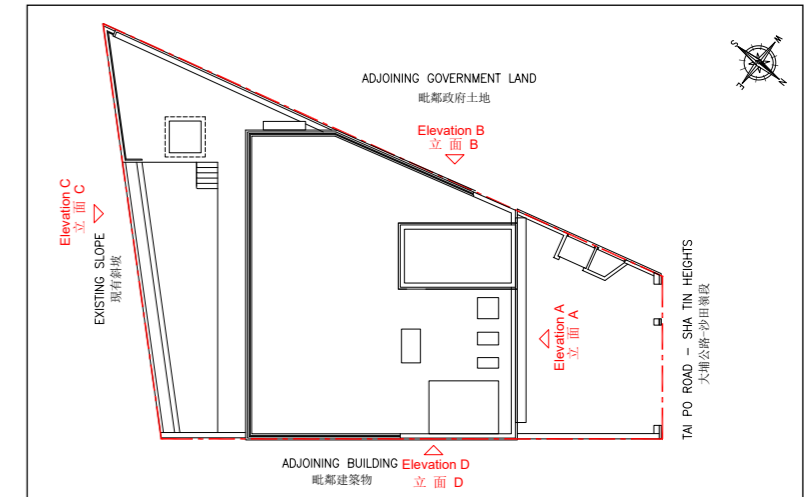


ELEVATION PLAN  
立面圖

ELEVATION A  
立面圖 A



KEY PLAN  
示意圖

BOUNDARY OF THE  
DEVELOPMENT  
發展項目的界線



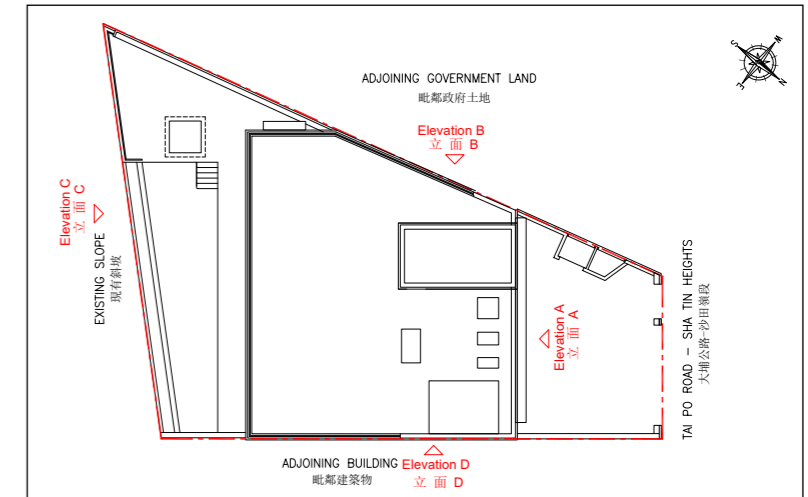
ELEVATION A  
立面圖 A

BOUNDARY OF THE  
DEVELOPMENT  
發展項目的界線

Authorized Person for the Development has certified that the elevations shown on the plan:  
(a) are prepared on the basis of the approved building plans for the Development as of 15 November 2023; and  
(b) are in general accordance with the outward appearance of the Development.

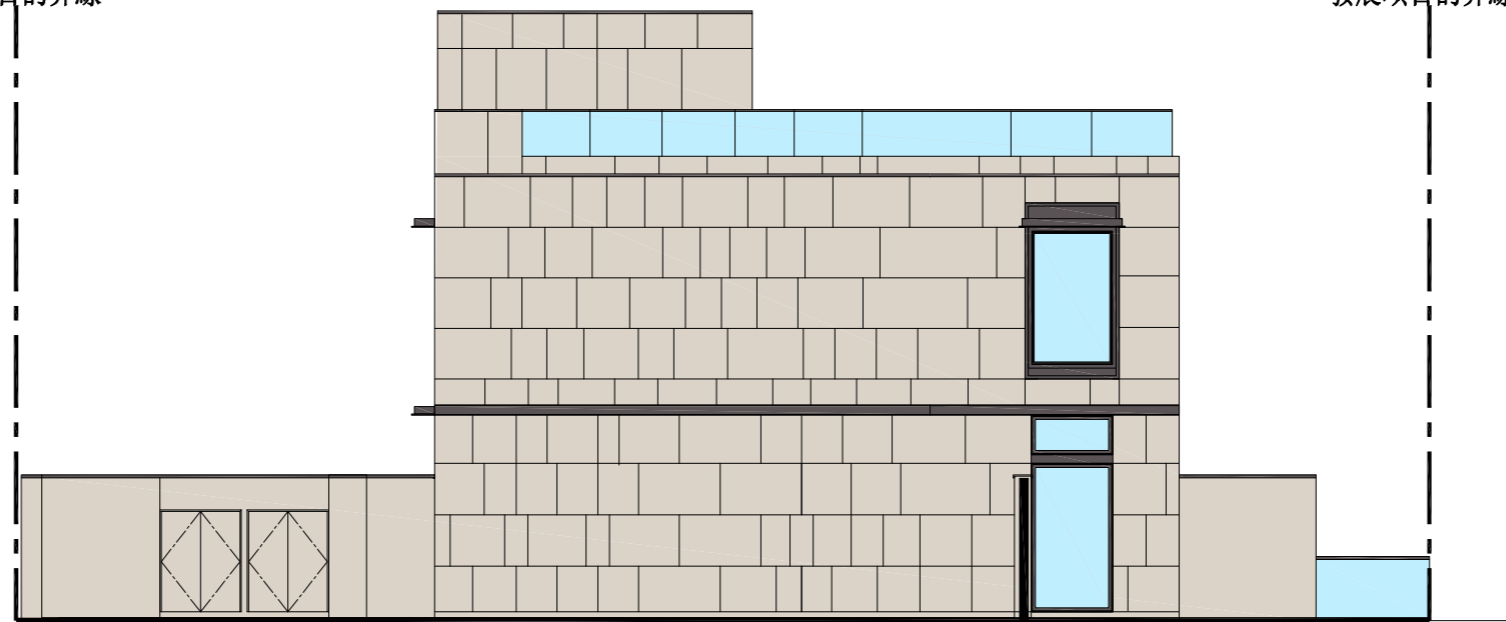
發展項目的認可人士已證明本圖顯示的立面：  
(a) 以2023年11月15日的情況為準的本項目的經批准的建築圖則為基礎擬備；及  
(b) 大致上與本項目的外觀一致。

ELEVATION B  
立面圖 B



KEY PLAN  
示意圖

BOUNDARY OF THE  
DEVELOPMENT  
發展項目的界線



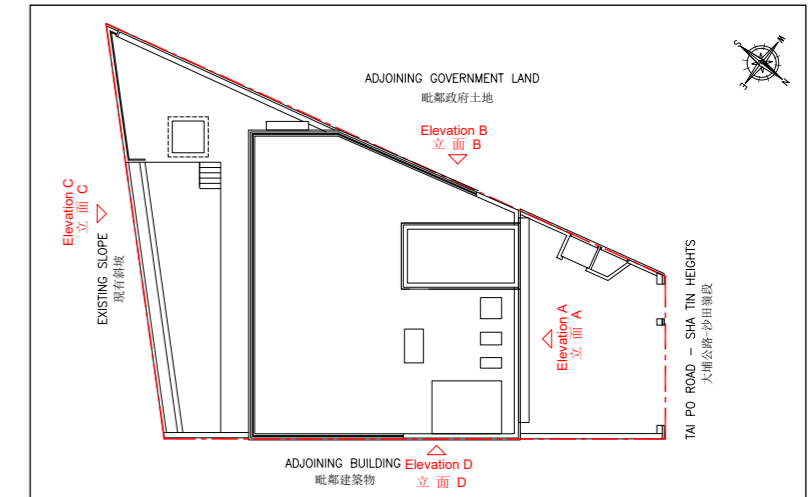
ELEVATION B  
立面圖 B

BOUNDARY OF THE  
DEVELOPMENT  
發展項目的界線

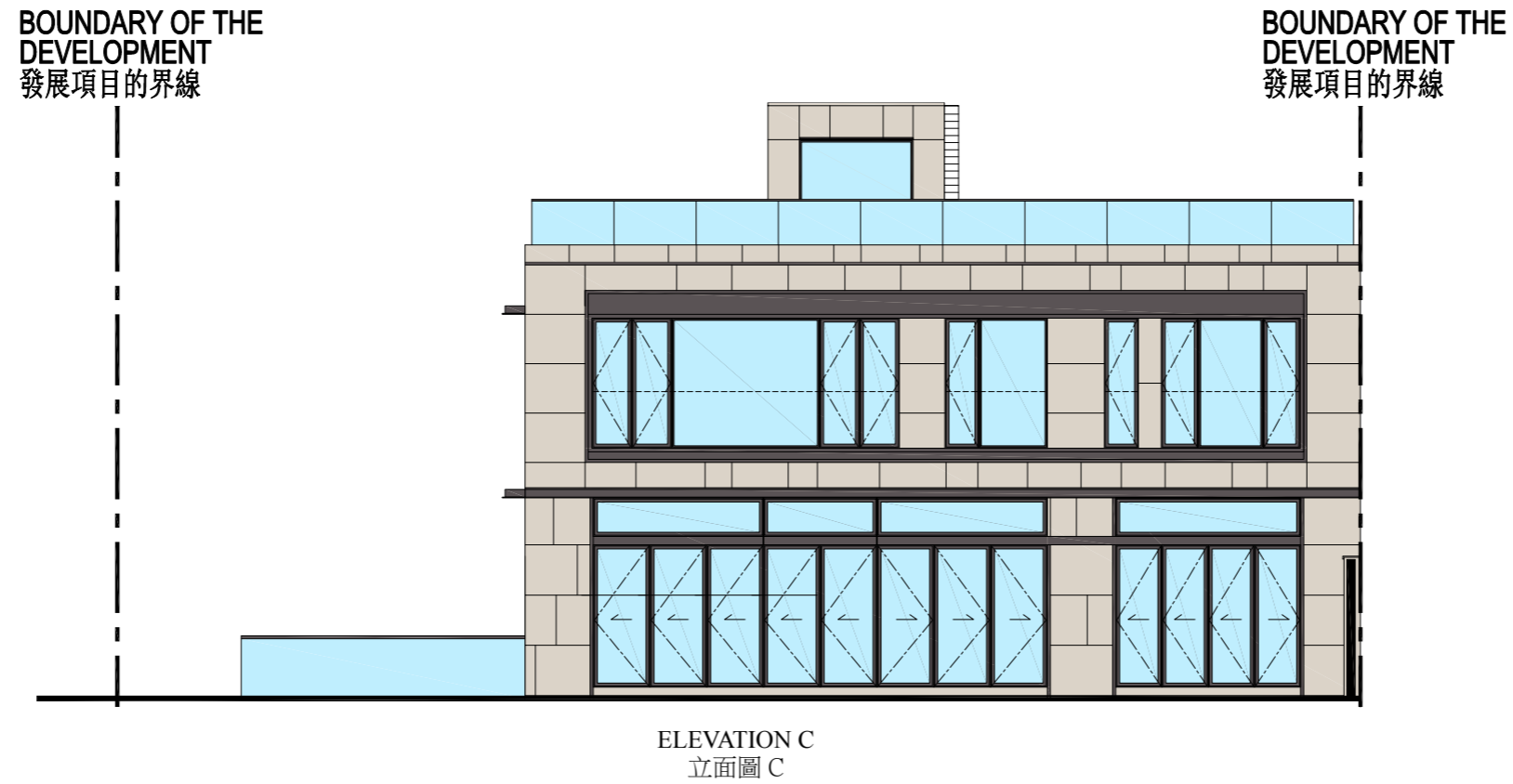
Authorized Person for the Development has certified that the elevations shown on the plan:  
(a) are prepared on the basis of the approved building plans for the Development as of 15 November 2023; and  
(b) are in general accordance with the outward appearance of the Development.

發展項目的認可人士已證明本圖顯示的立面：  
(a) 以2023年11月15日的情況為準的本項目的經批准的建築圖則為基礎擬備；及  
(b) 大致上與本項目的外觀一致。

ELEVATION C  
立面圖 C



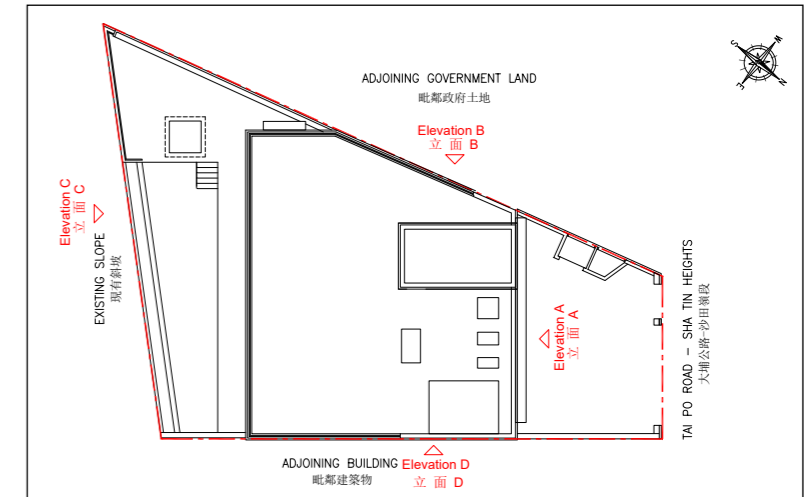
KEY PLAN  
示意圖



Authorized Person for the Development has certified that the elevations shown on the plan:  
(a) are prepared on the basis of the approved building plans for the Development as of 15 November 2023; and  
(b) are in general accordance with the outward appearance of the Development.

發展項目的認可人士已證明本圖顯示的立面：  
(a) 以2023年11月15日的情況為準的本項目的經批准的建築圖則為基礎擬備；及  
(b) 大致上與本項目的外觀一致。

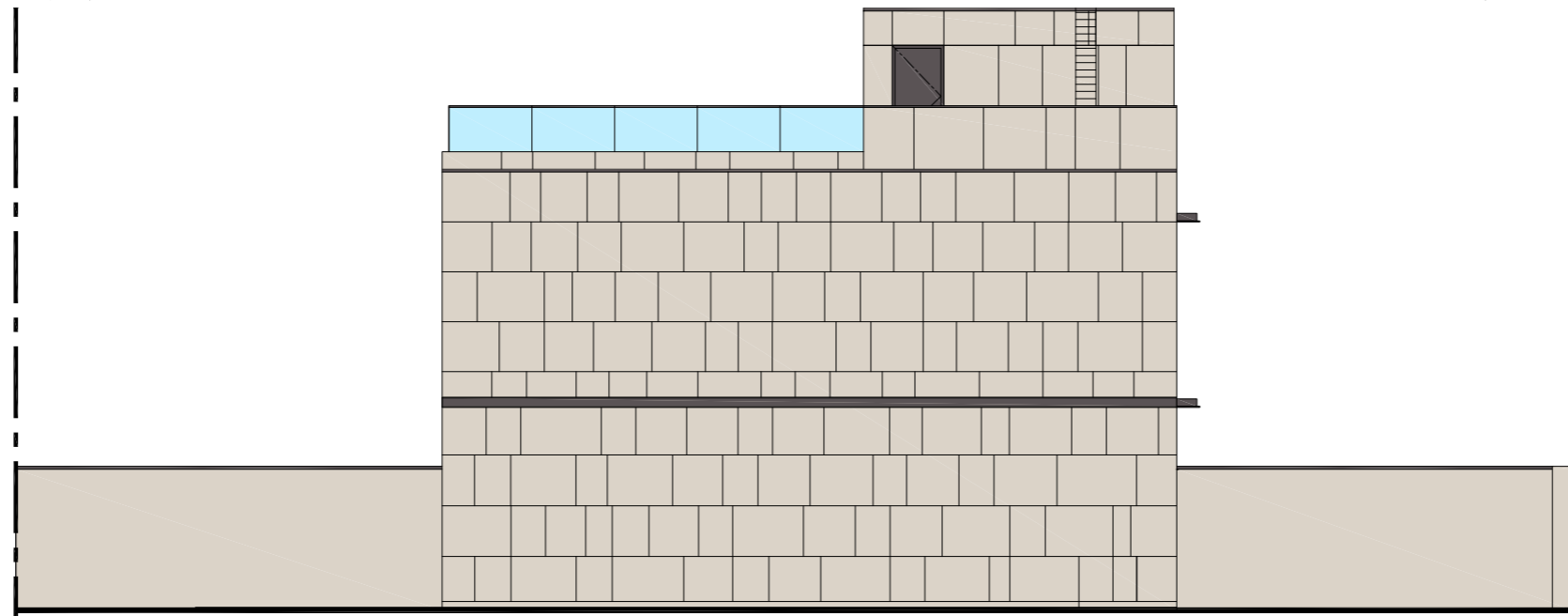
ELEVATION D  
立面圖 D



KEY PLAN  
示意圖

BOUNDARY OF THE  
DEVELOPMENT  
發展項目的界線

BOUNDARY OF THE  
DEVELOPMENT  
發展項目的界線



ELEVATION D  
立面圖 D

Authorized Person for the Development has certified that the elevations shown on the plan:  
(a) are prepared on the basis of the approved building plans for the Development as of 15 November 2023; and  
(b) are in general accordance with the outward appearance of the Development.

發展項目的認可人士已證明本圖顯示的立面：  
(a) 以2023年11月15日的情況為準的本項目的經批准的建築圖則為基礎擬備；及  
(b) 大致上與本項目的外觀一致。