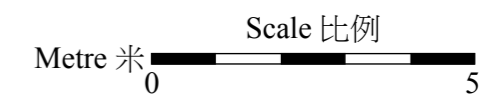
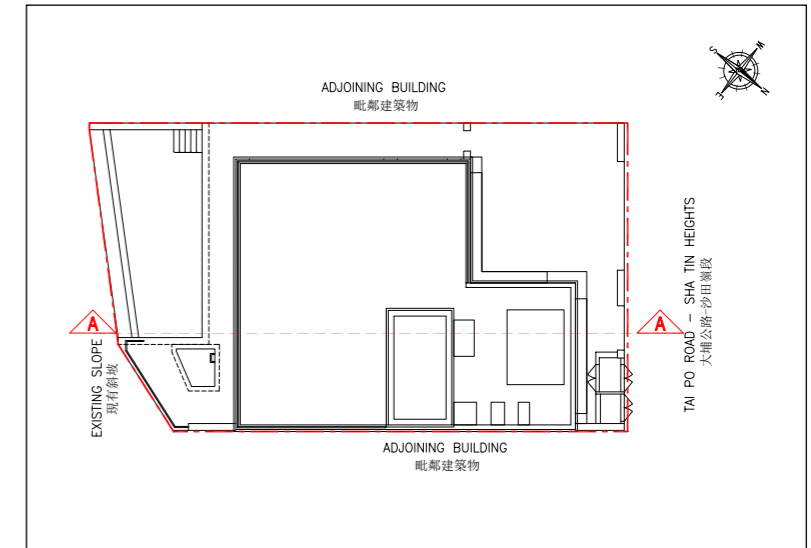
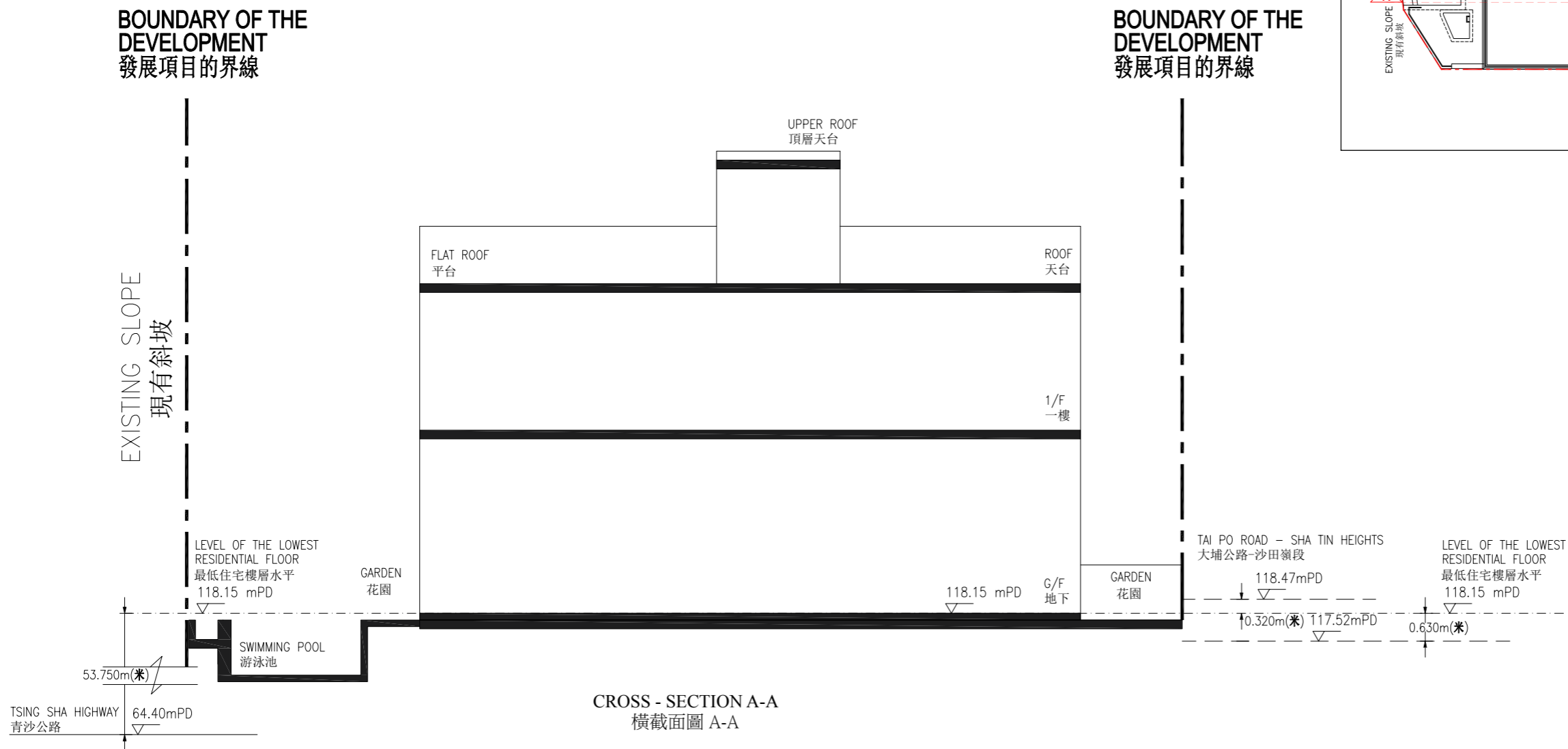


CROSS-SECTION A-A  
橫截面圖 A-A



1. The part of Tai Po Road - Sha Tin Heights adjacent to the building is 117.52 to 118.47 metres above the Hong Kong Principal Datum.
2. The part of Tsing Sha Highway adjacent to the building is 64.40 metres above the Hong Kong Principal Datum.
3. Dotted line denotes the level of the lowest residential floor.
4. ▽ denotes height (in metre) above the Hong Kong Principal Datum.

1. 毗連建築物的一段大埔道 - 沙田嶺段為香港主水平基準以上117.52至118.47米。
2. 毗連建築物的一段青沙公路為香港主水平基準以上64.40米。
3. 虛線為最低住宅樓層水平。
4. ▽代表香港主水平基準以上的高度(米)。