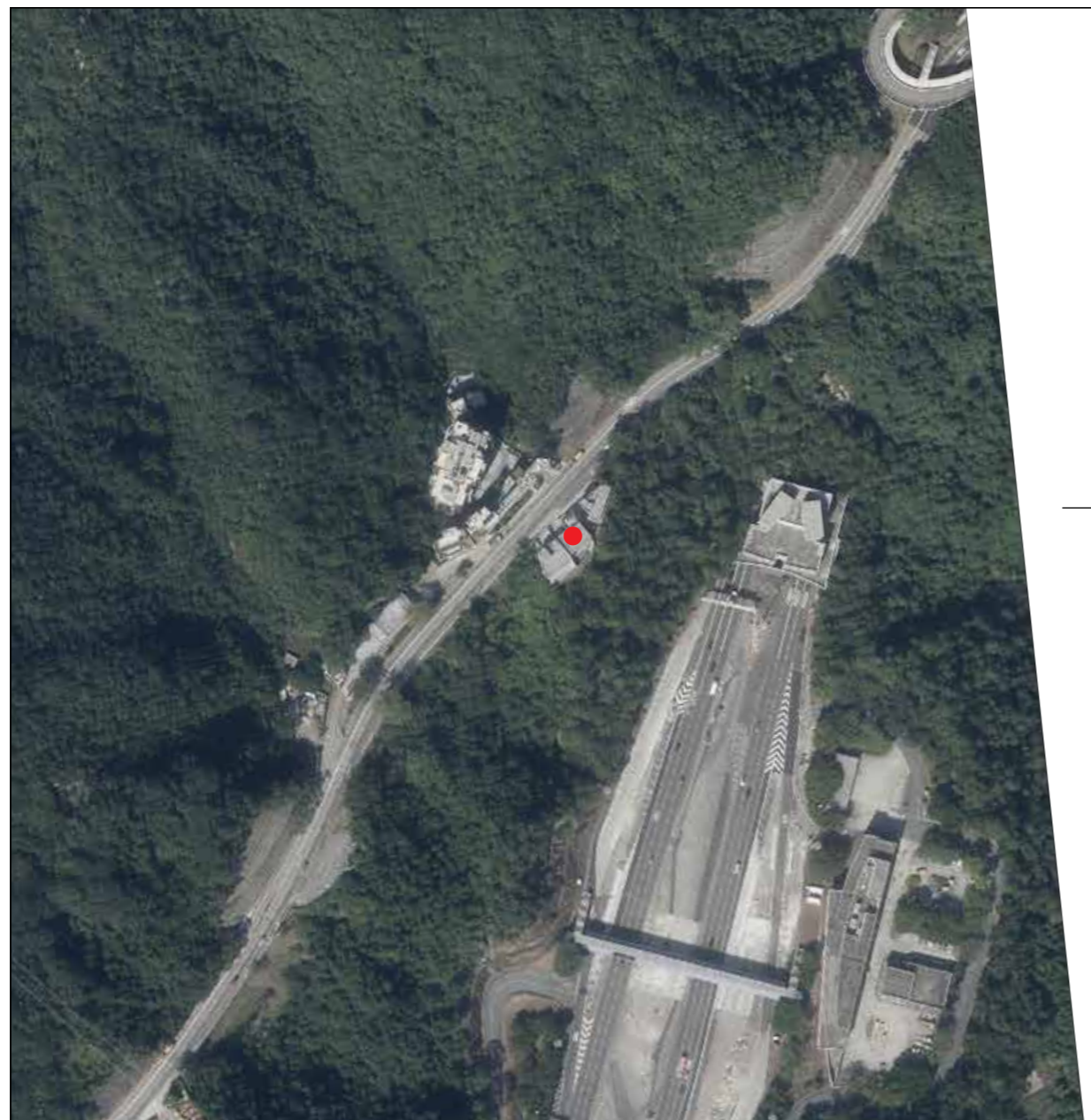


# AERIAL PHOTOGRAPH OF THE DEVELOPMENT

## 發展項目的鳥瞰照片

Adopted from part of the aerial photograph taken by the Survey and Mapping Office of the Lands Department at a flying height of 6,900 feet, Photo No. E241931C, dated 8 November 2024.  
摘錄自地政總署測繪處於2024年11月8日在6,900呎飛行高度拍攝之鳥瞰照片，編號為E241931C。



This blank area falls outside the coverage of  
the relevant Aerial Photograph  
鳥瞰照片並不覆蓋本空白範圍

● Location of the Development  
發展項目的位置

Survey and Mapping Office, Lands Department, The Government of HKSAR © Copyright reserved – reproduction by permission only.

### Notes:

1. Due to technical reasons that the boundary of the Development is irregular, this Aerial Photograph has shown more than the area required under the Residential Properties (First-hand Sales) Ordinance.
2. The Aerial Photograph is available for free inspection during normal office hours at sales office.
3. The Vendor advises prospective purchasers to conduct an on-site visit for a better understanding of the development site, its surrounding environment and the public facilities nearby.

香港特別行政區政府地政總署測繪處版權所有，未經許可，不得複製。

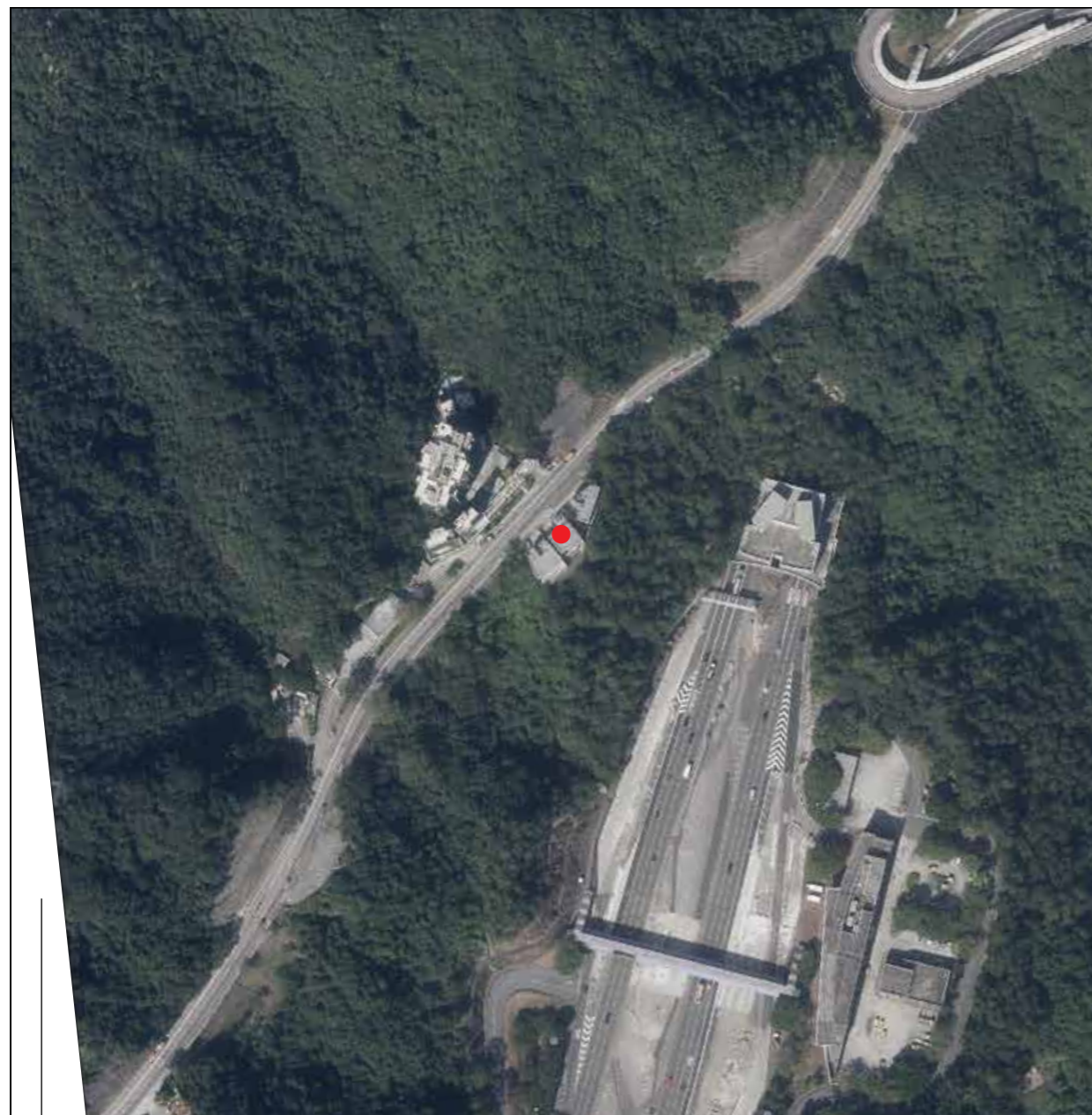
### 附註：

1. 因發展項目的邊界不規則的技術性問題，此鳥瞰照片所顯示的範圍超過《一手住宅物業銷售條例》的規定。
2. 該鳥瞰照片存於售樓處，於正常辦公時間內供免費查閱。
3. 賣方建議準買家到該發展地盤作實地考察，以對該發展地盤、其周邊地區環境及附近的公共設施有較佳了解。

# AERIAL PHOTOGRAPH OF THE DEVELOPMENT

## 發展項目的鳥瞰照片

Adopted from part of the aerial photograph taken by the Survey and Mapping Office of the Lands Department at a flying height of 6,900 feet, Photo No. E241930C, dated 8 November 2024.  
摘錄自地政總署測繪處於2024年11月8日在6,900呎飛行高度拍攝之鳥瞰照片，編號為E241930C。



● Location of the Development  
發展項目的位置

This blank area falls outside the coverage of the relevant Aerial Photograph  
鳥瞰照片並不覆蓋本空白範圍

Survey and Mapping Office, Lands Department, The Government of HKSAR © Copyright reserved – reproduction by permission only.

#### Notes:

1. Due to technical reasons that the boundary of the Development is irregular, this Aerial Photograph has shown more than the area required under the Residential Properties (First-hand Sales) Ordinance.
2. The Aerial Photograph is available for free inspection during normal office hours at sales office.
3. The Vendor advises prospective purchasers to conduct an on-site visit for a better understanding of the development site, its surrounding environment and the public facilities nearby.

香港特別行政區政府地政總署測繪處版權所有，未經許可，不得複製。

#### 附註：

1. 因發展項目的邊界不規則的技術性問題，此鳥瞰照片所顯示的範圍超過《一手住宅物業銷售條例》的規定。
2. 該鳥瞰照片存於售樓處，於正常辦公時間內供免費查閱。
3. 賣方建議準買家到該發展地盤作實地考察，以對該發展地盤、其周邊地區環境及附近的公共設施有較佳了解。