

# 11 FLOOR PLANS OF RESIDENTIAL PROPERTIES IN THE DEVELOPMENT

## 發展項目的住宅物業的樓面平面圖

The notes and legends on this page apply to all pages of "Floor plans of residential properties in the Development".  
 在本頁上之備註和圖例適用於全部的「發展項目的住宅物業的樓面平面圖」頁數。

### Legends of the Floor Plans 樓面平面圖圖例

A/C P.	= Air-Conditioning Platform 空調機平台	LIV. / DIN.	= Living Room And Dining Room 客廳及飯廳
ARCHITECTURAL FEATURE	= 建築裝飾	LIFT	= 升降機
BAL./U.P.	= Balcony And Utility Platform 露台及工作平台	LIFT LOBBY	= 升降機大堂
BAL., U.P. & A/C P. ABOVE	= Balcony, Utility Platform And Air-Conditioning Platform Above 上層露台、工作平台及空調機平台	LIFT SHAFT	= 升降機槽
B.	= Bathroom 浴室	O.KIT.	= Open Kitchen 開放式廚房
B.R.	= Bedroom 睡房	P.D.	= Pipe Duct 管道
BAL.	= Balcony 露台	PRIVATE FLAT ROOF	= 私人平台
COMMON AREA FOR TOWER DRAINAGE SYSTEM USE	= 供大廈排水系統使用之公共地方	R.C. CANOPY	= Reinforced Concrete Canopy 鋼筋混凝土簷蓬
COMMON FLAT ROOF	= 公用平台	TOP OF BALCONY	= 露台上蓋
DN	= Down 落	TOP OF CURTAIN WALL	= 玻璃幕牆上蓋
EL.D.	= Electrical Duct 電槽	UP	= 上
EL ROOM	= Electrical Room 電房	W.M.C.	= Water Meter Cabinet 水錶櫃
FLAT ROOF	= 平台	25/F FLAT A	= 25樓A單位
H.R.	= Hose Reel 消防喉轆	25/F FLAT B	= 25樓B單位
INACCESSIBLE FLAT ROOF	= 不可到達的平台	25/F FLAT C	= 25樓C單位
		25/F FLAT D	= 25樓D單位

#### Notes:

1. The dimensions in floor plans are all structural dimensions in millimeter.
2. There may be architectural features and/or exposed pipes/ductings on external walls of some floors.
3. Common pipes and/or mechanical and electrical services exposed and/or enclosed in cladding are located at/adjacent to the balcony and/or flat roof and/or air-conditioning platform and/or external wall of some units.
4. There are false ceiling and/or bulkheads at living room, dining room, bedrooms, open kitchen, bathroom and/or corridors of some units for the installation of the air-conditioning system and/or mechanical and electrical services.
5. Symbols of fittings and fitments shown on the floor plans, such as shower cubicle, sink, water closets, shower, sink counter etc. are architectural symbols retrieved from the latest approved building plans and are for general indication only.
6. Balconies, utility platforms and air-conditioning platforms are non-enclosed areas.

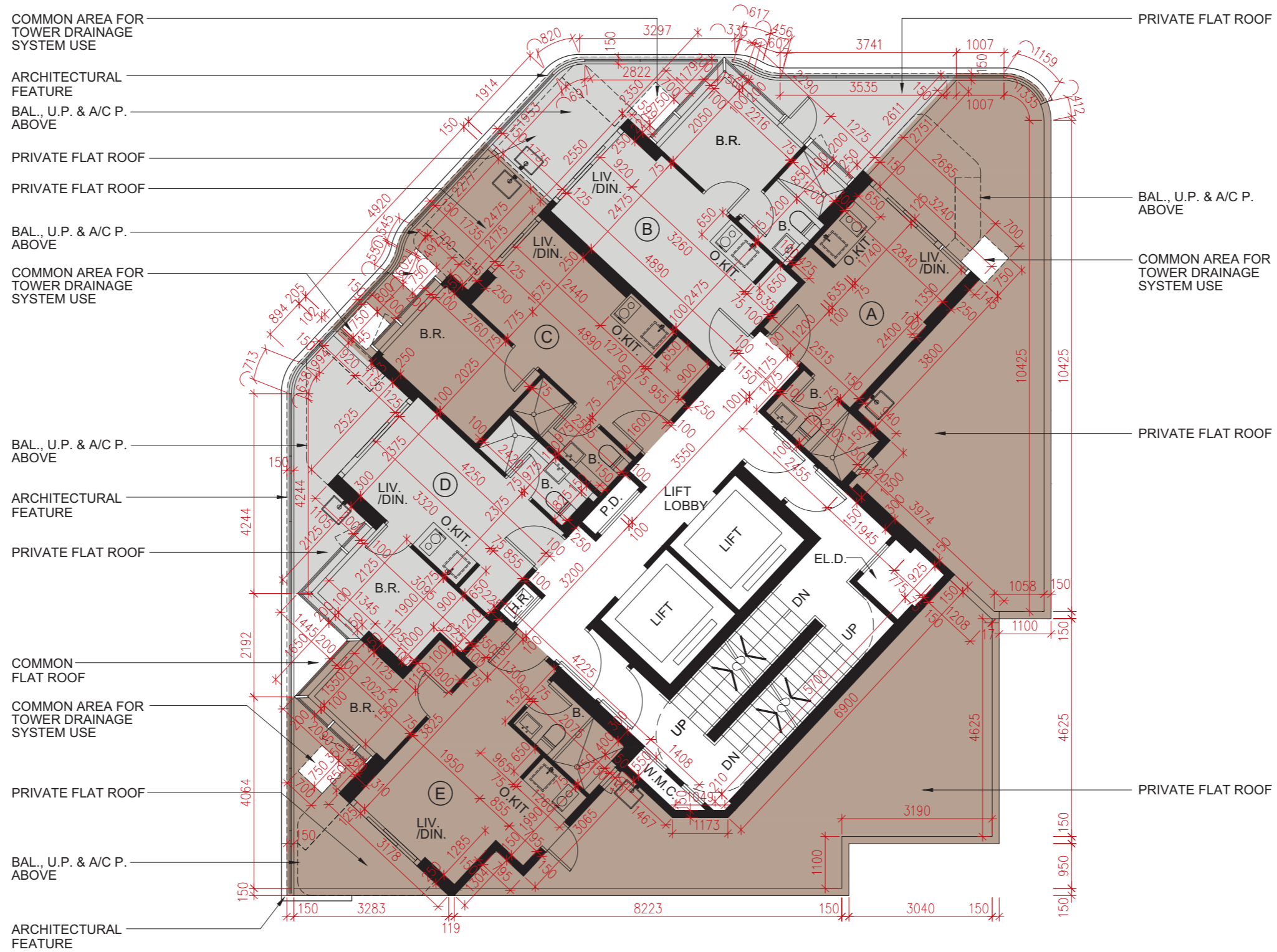
#### 備註：

1. 平面圖所列之數字以毫米標示之建築結構呎吋。
2. 部分樓層外牆或設有建築裝飾及 / 或外露喉管或管道。
3. 部分單位的露台及 / 或平台及 / 或空調機平台及 / 或外牆或其附近設有外露及 / 或內藏的公用喉管及 / 或其他機電設備。
4. 部分單位之客廳、飯廳、睡房、開放式廚房、浴室及 / 或走廊，設有假天花及 / 或假陣，內裝置有冷氣系統及 / 或其他機電設備。
5. 樓面平面圖上所顯示的形象裝置符號，例如淋浴間、洗滌盆、坐廁、花灑、洗滌盆櫃等乃摘自最新的經批准的建築圖則的建築符號，只作一般性標誌。
6. 露台、空調機平台及工作平台為不可封閉的地方。

# 11

## FLOOR PLANS OF RESIDENTIAL PROPERTIES IN THE DEVELOPMENT 發展項目的住宅物業的樓面平面圖

5/F  
5樓



SCALE 比例 : 0 4M/米

# 11

## FLOOR PLANS OF RESIDENTIAL PROPERTIES IN THE DEVELOPMENT 發展項目的住宅物業的樓面平面圖

Description 描述	Floor 樓層	Flat 單位				
		A	B	C	D	E
Thickness of the floor slabs (excluding plaster) of each residential property (mm) 每個住宅物業的樓板（不包括灰泥）的厚度（毫米）	5/F 5樓	150, 1800, 2200*	150, 550*, 1800, 2200*	1800, 2200*	1800, 2200*	150, 1800, 2200*
Floor-to-floor height (refers to the height between the top surface of the structural slab of a floor and the top surface of the structural slab of its immediate upper floor) of each residential property (mm) 每個住宅物業的層與層之間的高度 (指該樓層之石屎地台面與上一層石屎地台面之高度距離)(毫米)		3150	3150	3150	3150	3150

The internal areas of the residential properties on the upper floors will generally be slightly larger than those on the lower floors because of the reducing thickness of the structural walls on the upper floors and section. (Not applicable for this Development)

因住宅物業的較高樓層的結構牆的厚度遞減，較高樓層的內部面積，一般比較低樓層的內部面積稍大。（不適用於此發展項目）

\* Denotes that the slab thickness includes 400mm thick concrete fill.

\* 標示該樓板的厚度包括400毫米的混凝土填料。

Notes:

1. The dimensions in the floor plans are all structural dimensions integer.
2. Please refer to the first page of this section for legend of the terms and abbreviations shown in the floor plan.

備註：

1. 樓面平面圖所列之尺寸為以毫米標示的建築結構尺寸。
2. 平面圖中顯示之名詞及簡稱之圖例請參閱本節之首頁。

# 11

## FLOOR PLANS OF RESIDENTIAL PROPERTIES IN THE DEVELOPMENT 發展項目的住宅物業的樓面平面圖

6/F - 10/F  
6樓至10樓



# 11

## FLOOR PLANS OF RESIDENTIAL PROPERTIES IN THE DEVELOPMENT 發展項目的住宅物業的樓面平面圖

Description 描述	Floor 樓層	Flat 單位				
		A	B	C	D	E
Thickness of the floor slabs (excluding plaster) of each residential property (mm) 每個住宅物業的樓板（不包括灰泥）的厚度（毫米）	6/F - 10/F 6樓至10樓	150, 300	150, 300	150	150, 300	150, 300
Floor-to-floor height (refers to the height between the top surface of the structural slab of a floor and the top surface of the structural slab of its immediate upper floor) of each residential property (mm) 每個住宅物業的層與層之間的高度 (指該樓層之石屎地台面與上一層石屎地台面之高度距離)(毫米)		3150	3150	3150	3150	3150

The internal areas of the residential properties on the upper floors will generally be slightly larger than those on the lower floors because of the reducing thickness of the structural walls on the upper floors and section. (Not applicable for this Development)

因住宅物業的較高樓層的結構牆的厚度遞減，較高樓層的內部面積，一般比較低樓層的內部面積稍大。（不適用於此發展項目）

Notes:

1. The dimensions in the floor plans are all structural dimensions integer.
2. Please refer to the first page of this section for legend of the terms and abbreviations shown in the floor plan.

備註：

1. 樓面平面圖所列之尺寸為以毫米標示的建築結構尺寸。
2. 平面圖中顯示之名詞及簡稱之圖例請參閱本節之首頁。

# 11

## FLOOR PLANS OF RESIDENTIAL PROPERTIES IN THE DEVELOPMENT 發展項目的住宅物業的樓面平面圖

11/F  
11樓



# 11

## FLOOR PLANS OF RESIDENTIAL PROPERTIES IN THE DEVELOPMENT 發展項目的住宅物業的樓面平面圖

Description 描述	Floor 樓層	Flat 單位				
		A	B	C	D	E
Thickness of the floor slabs (excluding plaster) of each residential property (mm) 每個住宅物業的樓板（不包括灰泥）的厚度（毫米）	11/F 11樓	150, 300	150, 300	150	150, 300	150, 300
Floor-to-floor height (refers to the height between the top surface of the structural slab of a floor and the top surface of the structural slab of its immediate upper floor) of each residential property (mm) 每個住宅物業的層與層之間的高度 （指該樓層之石屎地台面與上一層石屎地台面之高度距離）（毫米）		3150	3150	3150	3150	3150

The internal areas of the residential properties on the upper floors will generally be slightly larger than those on the lower floors because of the reducing thickness of the structural walls on the upper floors and section. (Not applicable for this Development)

因住宅物業的較高樓層的結構牆的厚度遞減，較高樓層的內部面積，一般比較低樓層的內部面積稍大。（不適用於此發展項目）

Notes:

1. The dimensions in the floor plans are all structural dimensions integer.
2. Please refer to the first page of this section for legend of the terms and abbreviations shown in the floor plan.

備註：

1. 樓面平面圖所列之尺寸為以毫米標示的建築結構尺寸。
2. 平面圖中顯示之名詞及簡稱之圖例請參閱本節之首頁。

# 11

## FLOOR PLANS OF RESIDENTIAL PROPERTIES IN THE DEVELOPMENT 發展項目的住宅物業的樓面平面圖

12/F  
12樓



# 11

## FLOOR PLANS OF RESIDENTIAL PROPERTIES IN THE DEVELOPMENT 發展項目的住宅物業的樓面平面圖

Description 描述	Floor 樓層	Flat 單位				
		A	B	C	D	E
Thickness of the floor slabs (excluding plaster) of each residential property (mm) 每個住宅物業的樓板（不包括灰泥）的厚度（毫米）	12/F 12樓	150, 300	150, 300	150, 300	150, 300	150, 300
Floor-to-floor height (refers to the height between the top surface of the structural slab of a floor and the top surface of the structural slab of its immediate upper floor) of each residential property (mm) 每個住宅物業的層與層之間的高度 (指該樓層之石屎地台面與上一層石屎地台面之高度距離)(毫米)		3150	3150	3150	3150	3150

The internal areas of the residential properties on the upper floors will generally be slightly larger than those on the lower floors because of the reducing thickness of the structural walls on the upper floors and section. (Not applicable for this Development)

因住宅物業的較高樓層的結構牆的厚度遞減，較高樓層的內部面積，一般比較低樓層的內部面積稍大。（不適用於此發展項目）

Notes:

1. The dimensions in the floor plans are all structural dimensions integer.
2. Please refer to the first page of this section for legend of the terms and abbreviations shown in the floor plan.

備註：

1. 樓面平面圖所列之尺寸為以毫米標示的建築結構尺寸。
2. 平面圖中顯示之名詞及簡稱之圖例請參閱本節之首頁。

# 11

## FLOOR PLANS OF RESIDENTIAL PROPERTIES IN THE DEVELOPMENT 發展項目的住宅物業的樓面平面圖

15/F  
15樓



# 11

## FLOOR PLANS OF RESIDENTIAL PROPERTIES IN THE DEVELOPMENT 發展項目的住宅物業的樓面平面圖

Description 描述	Floor 樓層	Flat 單位				
		A	B	C	D	E
Thickness of the floor slabs (excluding plaster) of each residential property (mm) 每個住宅物業的樓板（不包括灰泥）的厚度（毫米）	15/F 15樓	150, 300	150, 300	150, 300	150, 300	150, 300
Floor-to-floor height (refers to the height between the top surface of the structural slab of a floor and the top surface of the structural slab of its immediate upper floor) of each residential property (mm) 每個住宅物業的層與層之間的高度 (指該樓層之石屎地台面與上一層石屎地台面之高度距離)(毫米)		3150	3150	3150	3150	3150

The internal areas of the residential properties on the upper floors will generally be slightly larger than those on the lower floors because of the reducing thickness of the structural walls on the upper floors and section. (Not applicable for this Development)

因住宅物業的較高樓層的結構牆的厚度遞減，較高樓層的內部面積，一般比較低樓層的內部面積稍大。（不適用於此發展項目）

Notes:

1. The dimensions in the floor plans are all structural dimensions integer.
2. Please refer to the first page of this section for legend of the terms and abbreviations shown in the floor plan.

備註：

1. 樓面平面圖所列之尺寸為以毫米標示的建築結構尺寸。
2. 平面圖中顯示之名詞及簡稱之圖例請參閱本節之首頁。

# 11

## FLOOR PLANS OF RESIDENTIAL PROPERTIES IN THE DEVELOPMENT 發展項目的住宅物業的樓面平面圖

16/F - 17/F  
16樓至17樓



SCALE 比例 : 0 4M/米

# 11

## FLOOR PLANS OF RESIDENTIAL PROPERTIES IN THE DEVELOPMENT 發展項目的住宅物業的樓面平面圖

Description 描述	Floor 樓層	Flat 單位				
		A	B	C	D	E
Thickness of the floor slabs (excluding plaster) of each residential property (mm) 每個住宅物業的樓板（不包括灰泥）的厚度（毫米）	16/F - 17/F 16樓至17樓	150, 300	150, 300	150, 300	150, 300	150, 300
Floor-to-floor height (refers to the height between the top surface of the structural slab of a floor and the top surface of the structural slab of its immediate upper floor) of each residential property (mm) 每個住宅物業的層與層之間的高度 (指該樓層之石屎地台面與上一層石屎地台面之高度距離)(毫米)		3150	3150	3150	3150	3150

The internal areas of the residential properties on the upper floors will generally be slightly larger than those on the lower floors because of the reducing thickness of the structural walls on the upper floors and section. (Not applicable for this Development)

因住宅物業的較高樓層的結構牆的厚度遞減，較高樓層的內部面積，一般比較低樓層的內部面積稍大。（不適用於此發展項目）

Notes:

1. The dimensions in the floor plans are all structural dimensions integer.
2. Please refer to the first page of this section for legend of the terms and abbreviations shown in the floor plan.

備註：

1. 樓面平面圖所列之尺寸為以毫米標示的建築結構尺寸。
2. 平面圖中顯示之名詞及簡稱之圖例請參閱本節之首頁。

# 11

## FLOOR PLANS OF RESIDENTIAL PROPERTIES IN THE DEVELOPMENT 發展項目的住宅物業的樓面平面圖

18/F  
18樓



SCALE 比例 : 0 4M/米

# 11

## FLOOR PLANS OF RESIDENTIAL PROPERTIES IN THE DEVELOPMENT 發展項目的住宅物業的樓面平面圖

Description 描述	Floor 樓層	Flat 單位			
		A	B	C	D
Thickness of the floor slabs (excluding plaster) of each residential property (mm) 每個住宅物業的樓板（不包括灰泥）的厚度（毫米）	18/F 18樓	150, 300	150, 300	150, 300	150, 300
Floor-to-floor height (refers to the height between the top surface of the structural slab of a floor and the top surface of the structural slab of its immediate upper floor) of each residential property (mm) 每個住宅物業的層與層之間的高度 (指該樓層之石屎地台面與上一層石屎地台面之高度距離)(毫米)		3150	3150	3150	3150

The internal areas of the residential properties on the upper floors will generally be slightly larger than those on the lower floors because of the reducing thickness of the structural walls on the upper floors and section. (Not applicable for this Development)

因住宅物業的較高樓層的結構牆的厚度遞減，較高樓層的內部面積，一般比較低樓層的內部面積稍大。（不適用於此發展項目）

Notes:

1. The dimensions in the floor plans are all structural dimensions integer.
2. Please refer to the first page of this section for legend of the terms and abbreviations shown in the floor plan.

備註：

1. 樓面平面圖所列之尺寸為以毫米標示的建築結構尺寸。
2. 平面圖中顯示之名詞及簡稱之圖例請參閱本節之首頁。

# 11

## FLOOR PLANS OF RESIDENTIAL PROPERTIES IN THE DEVELOPMENT 發展項目的住宅物業的樓面平面圖

19/F - 23/F & 25/F  
19樓至23樓及25樓



SCALE 比例 : 4M/米

# 11

## FLOOR PLANS OF RESIDENTIAL PROPERTIES IN THE DEVELOPMENT 發展項目的住宅物業的樓面平面圖

Description 描述	Floor 樓層	Flat 單位			
		A	B	C	D
Thickness of the floor slabs (excluding plaster) of each residential property (mm) 每個住宅物業的樓板（不包括灰泥）的厚度（毫米）	19/F - 23/F 19樓至23樓	150, 300	150	150, 300	150, 300
Floor-to-floor height (refers to the height between the top surface of the structural slab of a floor and the top surface of the structural slab of its immediate upper floor) of each residential property (mm) 每個住宅物業的層與層之間的高度 (指該樓層之石屎地台面與上一層石屎地台面之高度距離)(毫米)		3150	3150	3150	3150
Thickness of the floor slabs (excluding plaster) of each residential property (mm) 每個住宅物業的樓板（不包括灰泥）的厚度（毫米）	25/F 25樓	150, 300	150	150, 300	150, 300
Floor-to-floor height (refers to the height between the top surface of the structural slab of a floor and the top surface of the structural slab of its immediate upper floor) of each residential property (mm) 每個住宅物業的層與層之間的高度 (指該樓層之石屎地台面與上一層石屎地台面之高度距離)(毫米)		3500	3500	3500	3500

The internal areas of the residential properties on the upper floors will generally be slightly larger than those on the lower floors because of the reducing thickness of the structural walls on the upper floors and section. (Not applicable for this Development)

因住宅物業的較高樓層的結構牆的厚度遞減，較高樓層的內部面積，一般比較低樓層的內部面積稍大。（不適用於此發展項目）

Notes:

1. The dimensions in the floor plans are all structural dimensions integer.
2. Please refer to the first page of this section for legend of the terms and abbreviations shown in the floor plan.

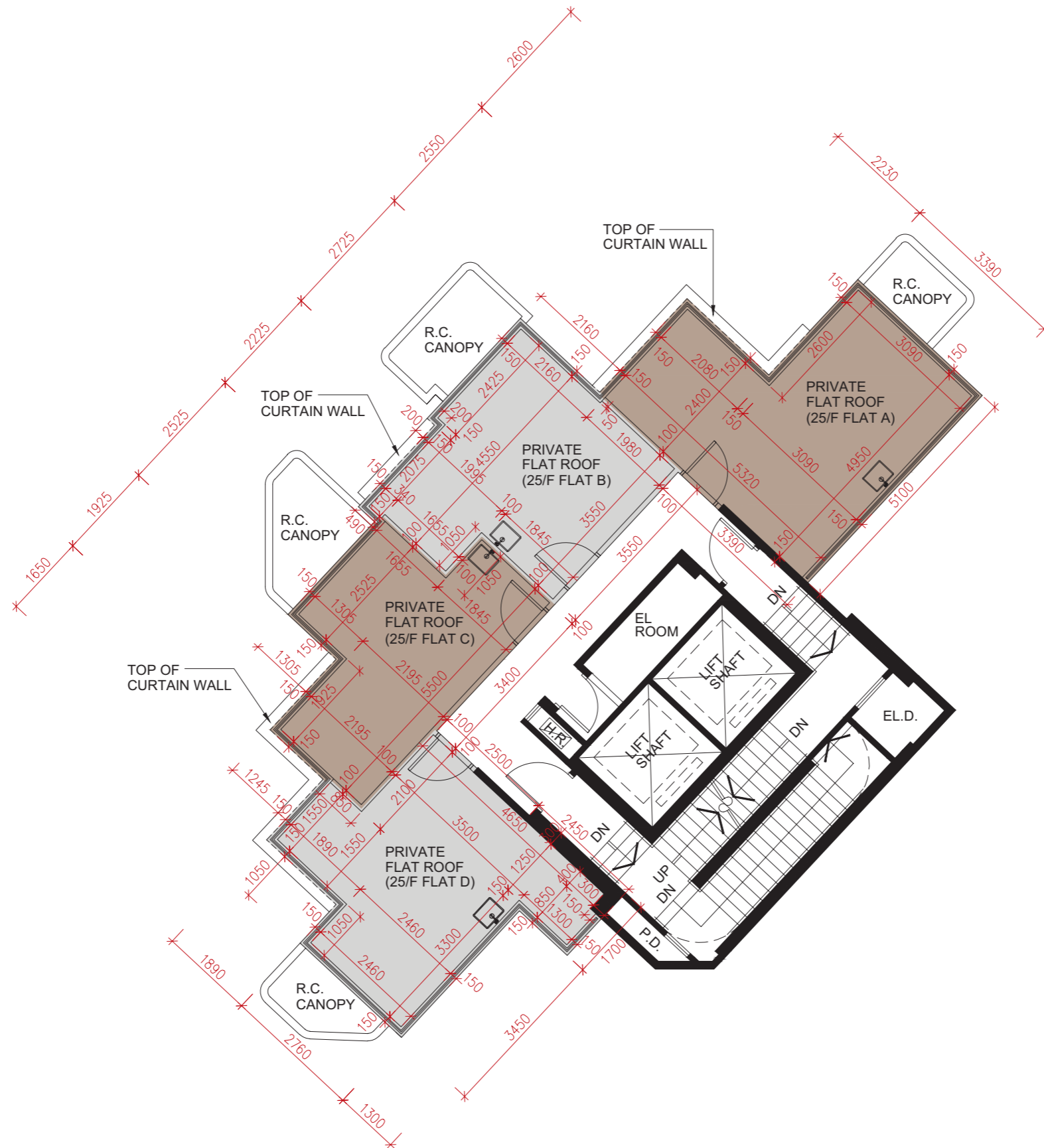
備註：

1. 樓面平面圖所列之尺寸為以毫米標示的建築結構尺寸。
2. 平面圖中顯示之名詞及簡稱之圖例請參閱本節之首頁。

# 11

## FLOOR PLANS OF RESIDENTIAL PROPERTIES IN THE DEVELOPMENT 發展項目的住宅物業的樓面平面圖

ROOF  
天台



SCALE 比例 : 0 4M/米

# 11

## FLOOR PLANS OF RESIDENTIAL PROPERTIES IN THE DEVELOPMENT 發展項目的住宅物業的樓面平面圖

Description 描述	Floor 樓層	Flat 單位			
		A	B	C	D
Thickness of the floor slabs (excluding plaster) of each residential property (mm) 每個住宅物業的樓板（不包括灰泥）的厚度（毫米）	Roof 天台	Not Applicable 不適用	Not Applicable 不適用	Not Applicable 不適用	Not Applicable 不適用
Floor-to-floor height (refers to the height between the top surface of the structural slab of a floor and the top surface of the structural slab of its immediate upper floor) of each residential property (mm) 每個住宅物業的層與層之間的高度 (指該樓層之石屎地台面與上一層石屎地台面之高度距離)(毫米)		Not Applicable 不適用	Not Applicable 不適用	Not Applicable 不適用	Not Applicable 不適用

The internal areas of the residential properties on the upper floors will generally be slightly larger than those on the lower floors because of the reducing thickness of the structural walls on the upper floors and section. (Not applicable for this Development)

因住宅物業的較高樓層的結構牆的厚度遞減，較高樓層的內部面積，一般比較低樓層的內部面積稍大。（不適用於此發展項目）

Notes:

1. The dimensions in the floor plans are all structural dimensions integer.
2. Please refer to the first page of this section for legend of the terms and abbreviations shown in the floor plan.

備註：

1. 樓面平面圖所列之尺寸為以毫米標示的建築結構尺寸。
2. 平面圖中顯示之名詞及簡稱之圖例請參閱本節之首頁。